



STOUGHTON AREA SCHOOL DISTRICT EXECUTIVE SUMMARY

PROVIDED BY FINDORFF

City of Stoughton, Wisconsin 8/9/24

River Bluff Campus

Concrete masonry unit (CMU) wall erection continues at the River Bluff Middle School gym addition. Findorff masons have set most of the block in the non-gym spaces and are now pushing to complete the gym box walls. As the walls go up, mechanical, electrical, and plumbing (MEP) subcontractors work alongside the masons on in-wall rough-ins and wall penetrations. This past week, underground site utility work was completed, prepping the addition to tie into the city sewer and water main. In the coming weeks, structural steel erection will begin in the non-gym space of the addition, followed by steel joists and decking. When erection of the CMU walls is complete, underground MEP rough-ins will commence.



Above: a view of the overall progress at the River Bluff Middle School addition captured by a Findorff drone flight on 8/5

Kegonsa Elementary Update

The Past Few Weeks:

- Kitchen epoxy flooring install complete
- Final above ceiling inspection passed
- Paint, ceiling, and light fixture install complete in gym
- Ceiling grid complete throughout
- Paint, ceilings, flooring, and light fixtures complete in library
- Install of new aluminum entrance doors underway

Coming Up!:

- Gym/Cafeteria flooring and striping to begin
- New drinking fountains and bottle fillers to be installed
- Corridor flooring and ceiling tile to be completed
- Furniture move and classroom set-up to continue
- Final clean to begin



Above: a sneak peak of the new finishes in the Kegonsa Elementary Gym / Cafeteria space ahead of the flooring install

DID YOU KNOW?

The High School Commons will feature five massive skylights spanning over 7-feet in width and over 22-feet length. These skylights in conjunction with the increased ceiling heights will bring in an abundance of natural light to the space.

Questions?

Senior Project Manager, Matt Claggett / 608.729.2155 / mclaggett@findorff.com





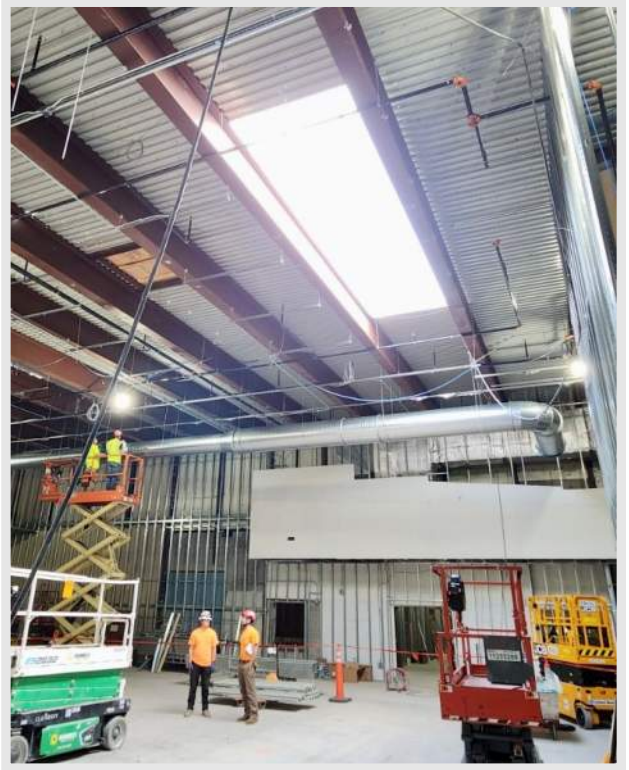
STOUGHTON AREA SCHOOL DISTRICT EXECUTIVE SUMMARY

PROVIDED BY FINDORFF

City of Stoughton, Wisconsin 8/9/24

Stoughton High School Kitchen & Commons

This week at the Stoughton High School, openings for the future skylights were cut into the roof in the Commons. With this demo complete, framing of the parapet walls can begin around these openings in preparation for the five new skylights. Installation of the fire sprinkler piping and ductwork are underway along with other overhead rough-ins. Steel stud wall framing is complete and in-wall rough-ins are underway. In the kitchen space, installation of the new walk-in cooler and freezer is complete and install of the ventilation hoods and fire protection systems is underway.



Top Right: a view of the first skylight opening cut in overhead in the High School Commons space



Top Left: a photo of the new cooler & freezer installed in the High School kitchen

Yahara Site

Foundations for the New Maintenance Building are nearly complete at the Yahara Site. Following the remaining piers and footings poured this week, only a couple wall pours remain to reach this milestone. Site utilities were also completed this week to serve the Maintenance Building and Yahara Gym. In the coming weeks, the erection of the steel structure will begin, and metal roof panels will be set. After the structure is complete, mechanical, electrical, and plumbing (MEP) underground work will begin.



Above: a photo captured from a Findorff drone flight on 8/5 highlighting the progress on foundations for the Maintenance Building

Questions?

Senior Project Manager, Matt Claggett / 608.729.2155 / mclaggett@findorff.com





STOUGHTON AREA SCHOOL DISTRICT EXECUTIVE SUMMARY

PROVIDED BY FINDORFF

//////////////////////////////////// City of Stoughton, Wisconsin //////////////////////////////////////

8/9/24



Top Left: a sneak peak of the finishes in a completed classroom at Kegonsa Elementary in the "purple wing" of the school



Top Right: a view of the new light fixtures and ceiling installed in the High School library



Bottom: a photo captured of the River Bluff Campus highlighting the over progress in the foreground and Yahara River in the background

Questions?

Senior Project Manager, Matt Claggett / 608.729.2155 / mclaggett@findorff.com

