

#heartofthehive

Meet Our Administrative Team

Shannon Fincannon,
Principal

Kristen Hill, Assistant
Principal

Carolyn Cavanaugh,
Administrative
Assistant Principal



SCHOOL INFORMATION

- Students may enter the building at 7:15 a.m.
- Our school day officially begins at **7:50 a.m.**
- Dismissal at 2:40 p.m. You cannot sign your student after 2:15pm - In the front office.
- Car Riders- Enter through the back entrance carline off of Fork Avenue
- Buses and Day Care Only-Enter front entrance on Gibbes Street off of Lake Murray Boulevard
- Afternoon Safari- Held here at IES. Pick up in the cafeteria. Registration is available now through Seven Oaks Park. There is a handout in your folder with details.



Keeping Everyone Safe



The ONLY Entrance to IES is through the Front Office

- On the days you visit the school for a scheduled volunteer time or for lunch with your bee, you will only be able to enter via the **front door** on Gibbes Street through our secure entrance.
- Be sure to have **your driver's license** with you for each visit so you may check in via Ident-a-Kid. You will have to pass through the weapons detector. We suggest just bringing your cell phone and keys to assist in this process.
- All Exterior Doors are locked at all times.

What time does school officially start each day?

- 7:50 am ~ If students are not in their classrooms at 7:50 am each day, they are marked tardy and you must sign them in at the front office.
- Our carline gate closes at 7:45 am each morning. Just remember that your child has to be in their class by 7:50 or they are marked tardy ~ even if the gate is still open.



Staggered Start For Kindergarten (4K and 5K)

- We will begin the school year with a staggered start in Kindergarten. You will receive your child's start date and teacher assignment the same day.
- Half of the class will attend the first day of school (August 8th) and the second half will attend the second day (August 9th)
- ALL 5K students will then attend together August 12th

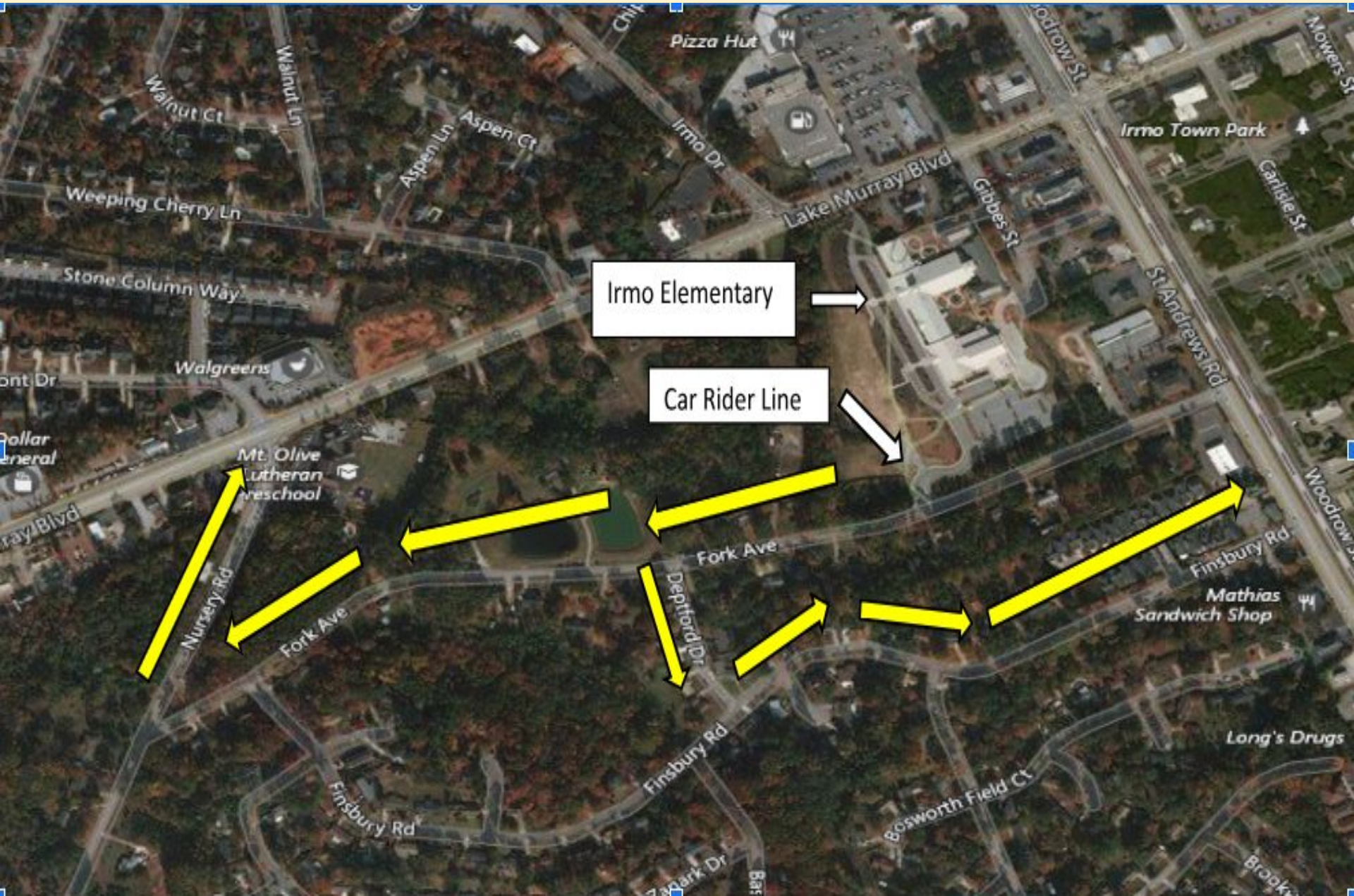


CAR RIDER LINE INFORMATION:

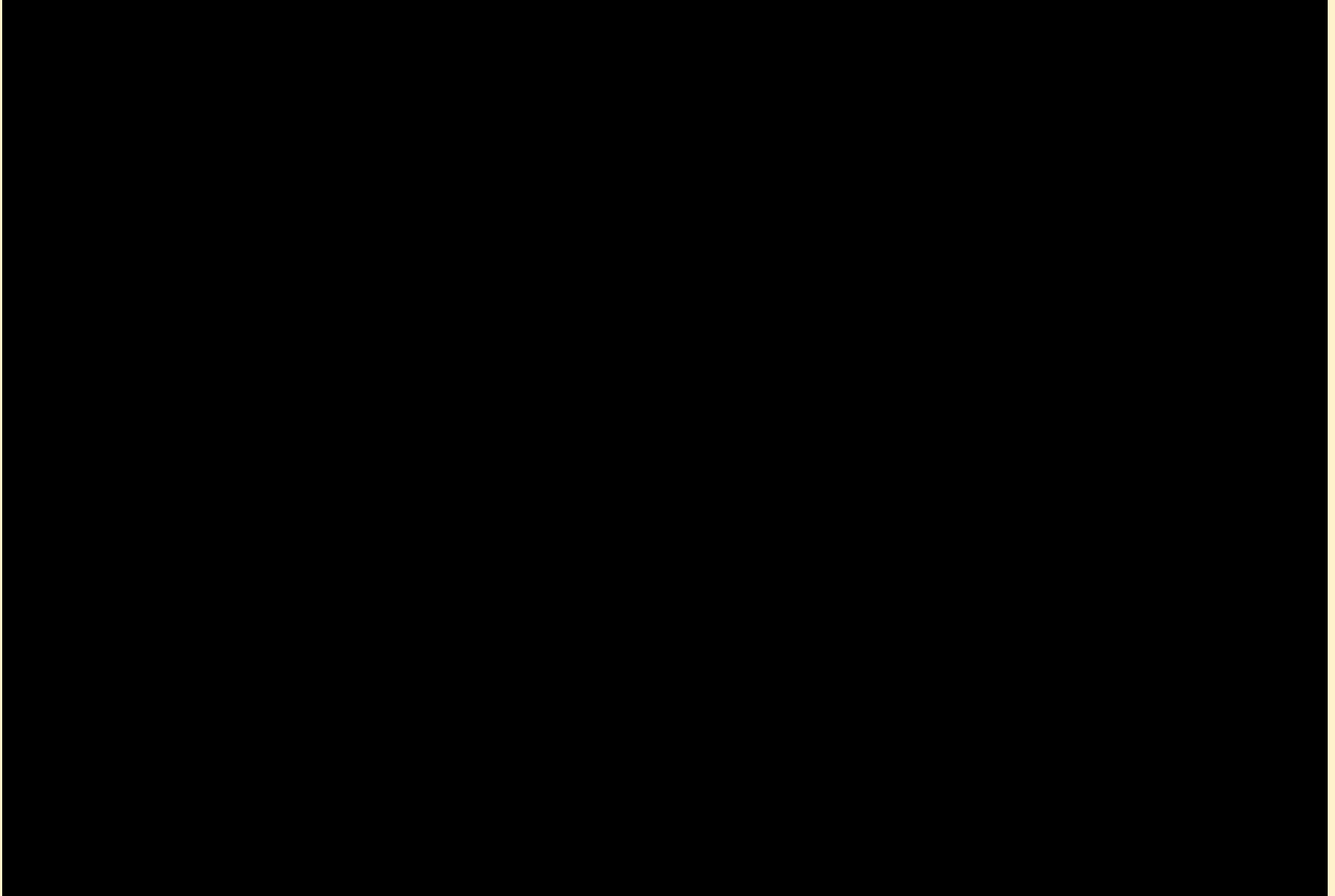
Drop Off Information:

- Please begin exiting the car at the first tower.
- Right turn only when exiting the car rider line after drop off on Fork Ave

CAR RIDER LINE INFORMATION:



How to Exit Your Car:



CAR RIDER LINE INFORMATION:

Pick Up Information:

- Please have your car tag hanging from your mirror for pick up. If there is not tag then the child cannot be dismissed to you. - You will have to drive around to the main office to present an I.D.
- Right turn only when exiting the car rider line after pick up on Fork Ave.
- If you need to buckle your child in the car please pull forward to the top of the line or the parking area at the bottom of the car rider line.

If you need to buckle your child in their seat: Option 1

Please pull all the way up
past the cone as far up as
possible

Main Tower



If you need to buckle your child in their seat: Option 2

Pull over towards the basketball court at the end of the car rider line towards the exit.



Attendance at IES

Attendance in the early grades

Many of our youngest students miss 10 percent of the school year—about 18 days a year or just two days every month. Chronic absenteeism in kindergarten, and even preK, can predict lower test scores, poor attendance and retention in later grades, especially if the problem persists for more than a year. Do you know how many young children are chronically absent in your school or community?



Who is affected

Kindergarten and 1st grade classes often have absenteeism rates as high as those in high school. Many of these absences are excused, but they still add up to lost time in the classroom.

1 in 10 kids

in kindergarten and 1st grade are chronically absent.
In some schools, it's as high as 1 in 4.¹



2 in 10
low-income kids

miss too much school. They're also more likely to suffer academically.¹



2.5 in 10
homeless kids

are chronically absent.²



4 in 10
transient kids

miss too much school when families move.²



Why it matters

If children don't show up for school regularly, they miss out on fundamental reading and math skills and the chance to build a habit of good attendance that will carry them into college and careers.

Preliminary data from a California study found that children who were chronically absent in kindergarten and 1st grade were far less likely to read proficiently at the end of 3rd grade.

Who Can Read on Grade Level After 3rd Grade?³



64%

of kids with good attendance in K and 1st
(missed 9 or fewer days both years)



43%

of kids with at-risk attendance
(missed more than 9 days both years)



41%

of kids chronically absent in K or 1st
(missed 18 or more days one year)



17%

of kids chronically absent in K and 1st
(missed 18 or more days both years)

What families can do



Find out what day school starts and make sure your child has the required shots.

Build regular routines for bed time and the morning.

Talk about the importance of regular attendance and about how your child feels about school.



Don't permit missing school unless your child is truly sick. Use a thermometer to check for a fever. Remember that stomach aches and headaches may be signs of anxiety.



Avoid medical appointments and extended trips when school is in session.

Keep a chart recording your child's attendance at home. At the end of the week, talk with your child about what you see.



Develop back up plans for getting to school if something comes up. Ask a family member, neighbor or another parent for help.

Seek support from school staff or community groups to help with transportation, health problems, or no safe path to school.

¹ Owing, Betty. *Parents, Managers, Parents: Engaged and Accounted For: The Critical Importance of Addressing Chronic Absence in the Early Grades*. National Center for Children, Youth, & Families. 2008.


² Chronic Absence in Utah, Utah Education Policy Center at the University of Utah. 2012.

³ Attendance in Early Elementary Grades: Association with Student Characteristics, School Readiness and Third Grade Outcomes. Applied Survey Research, May 2011.



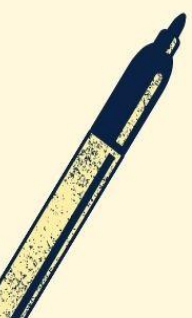
Elementary Attendance Guidelines

Students are considered lawfully absent when:

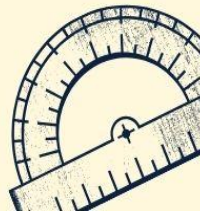
1. They are ill and their attendance in school would endanger his or her health or the health of others.
 2. There is a **death or a serious illness** in their immediate family - with proper documentation (i.e. bulletin, death notice, obituary, etc.)
 3. There is a **recognized religious holiday** of their faith.
 4. The student is **suspended** from school.
 5. There is an absence due to **an activity that is pre-approved** by the school building principal.
- 

Please keep in mind that parent notes are considered excused within the first 10 absences only if the reason for the absence is lawful.

Students will be considered unlawfully absent when:

1. There is an absence **without** the knowledge of the parent/guardian.
 2. There is an absence with the knowledge of the parent/guardian but **is not considered a lawful absent**.
- 

In accordance with State Board Regulation 43-274





“Oh, it’s just a tardy. We are only a few minutes late...”

No!

“They are in elementary school. It doesn’t count if they miss...”

No!

“Nothing happens the first hour of school...”

No!

What happens during the first hour of the school day?



Morning meeting

Breakfast

News Show

Announcements for the day

Unpacking bookbags

Intervention time

Getting ready for the new day



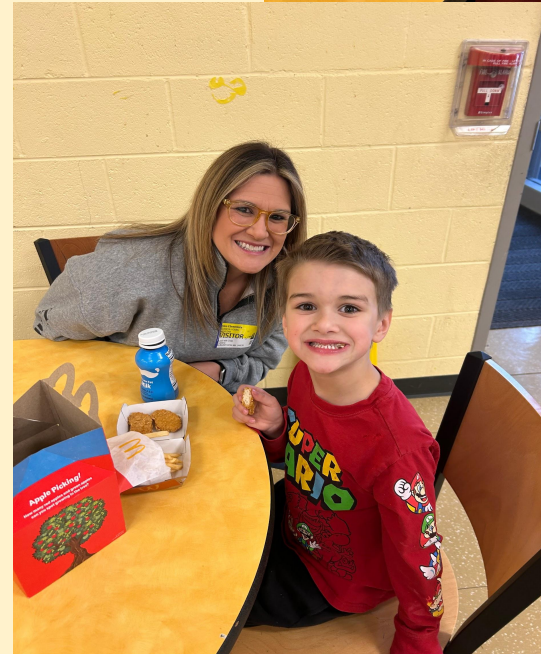
Be at school- on time, every day!

How will I know what is happening with my child at IES?

- Weekly Sunday Night School Wide Newsletter
- IES Social Media Websites
- Teachers also communicate with parents through email weekly.
- You will receive emails and phone calls from your child's teacher but please do not hesitate to contact them as well. We are the heart of the hive and families are a priority.
- Special events that invite parents in: Breakfast Buddies , Field Trips, and specific kindergarten events.
- Check out the hallways for what your child is up to!

You may join your child in the cafeteria during their lunch time.

We have special tables designated for this special time with your child! You may bring outside food to enjoy as a family. This time is for you and your child - no other children can join at this time.



IRMO ELEMENTARY

Social Media Pages



Irmo Elementary School



@irmoelem





We look forward to
partnering with you!
We know it will be a
great year!
#HeartoftheHive