

# Secure Student Pickup

In order for students to be dismissed through car line, the SSP app needs to be installed on your mobile device. SSP supports both [Android](#) and [iPhone](#) (as shown below). If we do not have your cell phone number and email address on file, please contact the school with these items before registering with SSP.

If you already have an SSP account from previous years, you do not need to register a new one. Your children will be added to your account.

New families may not be able to register for the SSP app if we have not uploaded new information.

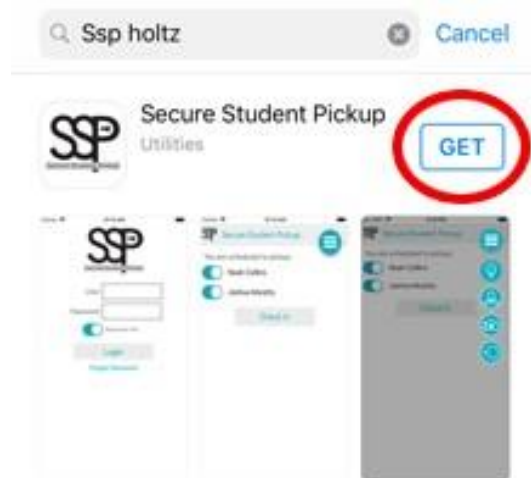
## Android

[Click here to download](#) or visit the Google Play Store and search for 'SSP Holtz'. Select the application and click on 'Install' as shown below.



## I-PHONE

[Click here to download](#) or visit the App Store and search for 'SSP Holtz'. Click on 'Get' as shown below.



**When picking up your student at dismissal, it is important you do not access the app before arriving near the sign pictured here.** Indicating your arrival too early could cause delays and confusion in the dismissal process. Also be sure NOT to check a GES student if you are in line at GIS. You must access the SSP app a second time when retrieving a student at GES.



## ACCESS FOR OTHER USERS

If you want another person to have access to picking up your student at dismissal, you must provide access through the Authorization screen found in the menu. If the person receiving access

does not already have an account with SSP through the school, you will need to provide their cell phone number and email address in order to grant access. This will create them an SSP username they can use to login to the app on their own phone. **These steps must be completed prior to retrieving a student through the dismissal line.**

### **PICTURES REQUIRED**

A picture of the app user is required to complete registration. Having a picture of the user who is retrieving the student provides an additional layer of security during the dismissal process. The picture is only displayed on the device used by staff assisting with loading students into vehicles.

### **QUESTIONS ABOUT USING THE APP OR THE PROCESS**

If you have any questions, please call the GES office at 740-587-8102.