



## **Twain E.S. Playground Project**

**PROJECT No. 2025-02A**

### **ADDENDUM #01**

**Project:** Twain E.S. Playground Project  
**Owner:** Lawndale Elementary School District  
4161 W 147th St, Lawndale, CA 90260

DSA Project No.: A#03-123949

**Date Issued:** August 6<sup>th</sup>, 2024

The clarifications, modifications, changes, additions, and/or deletions contained herein shall be incorporated within the construction documents for the project. Such information shall take precedence over that previously published.

## **CHANGES TO BIDDING REQUIREMENTS**

### **1. Addendum Acknowledgement**

Acknowledge receipt of this addendum on the space provided in the bid form.

## **CLARIFICATIONS AND REQUIREMENTS**

1. All project personnel working at the school site must be finger printed and have a background check performed by either the school district, or a third-party professional background check organization. Results must be mailed directly to the school district's human resources department. Previous background checks will not be accepted.
2. Contractor is responsible for transporting all playground equipment from the District Office Maintenance yard to the school site, at no cost to the District.
3. 6'-0" high temporary fencing, with vision screening, must be installed around the entire project area; all equipment and materials must be contained within the temporary fenced area.
4. Sanitary facilities, port-o-potty and hand wash facilities, must be located within the project temporary fenced area.
5. Landscaped area within the project temporary fenced area must be left in the same condition as before the project start.
6. All work pertaining to the school rest rooms, as well as any asphalt or concrete work outside of the fenced area, must be performed on the weekend.

## **CHANGES TO SPECIFICATIONS**

### **1. Specifications, Division 01 1100, Section 1.09**

Section 1.09 Owner Furnished/Contractor Installed (OF/CI) Products:

B. Owner's Responsibilities:

Delete Items 1, 2 and 5 in their entirety.

C. Contractor's Responsibilities:

1. Item 1: Remove and replace sentence to read: Contractor is responsible for the picking up of equipment from the District's Warehouse. Designate pick-up and delivery dates for each item in the Construction Schedule.
2. Add the following new Items:
  9. Arrange for and deliver necessary shop drawings, product data, and samples to the owner.
  10. Arrange and pay for Product delivery to Project Site, in accordance with Contractor's Construction Schedule.
  11. Arrange for replacement of damaged, defective, or missing items.

**CHANGES TO DRAWINGS**

**1. Sheet A001**

- a. Delete Keynote SN019 and replace with new Keynote SN032 to read: '(N) 1.5" MIN. AC PAVING OVERLAY AT 2% MAX CROSS SLOPE AND 4.9% MAX SLOPE IN DIRECTION OF TRAVEL. MATCH EXISTING SLOPES WEST AND EAST ENDS WHEN ADJOINING NEW PAVING TO EXISTING.'
- b. See revised attached A001.

**2. Sheet A002**

- a. Reword Keynote SN019 to read: '(N) 1.5" MIN. AC PAVING OVERLAY AT 2% MAX. SLOPE IN ALL DIRECTION AT ACCESSIBLE PARKING STALLS. FLUSH NEW AC PAVING INTO EXISTING AC PAVING FOR SMOOTH TRANSITION.'
- b. See revised attached A002.

**3. Sheet A003**

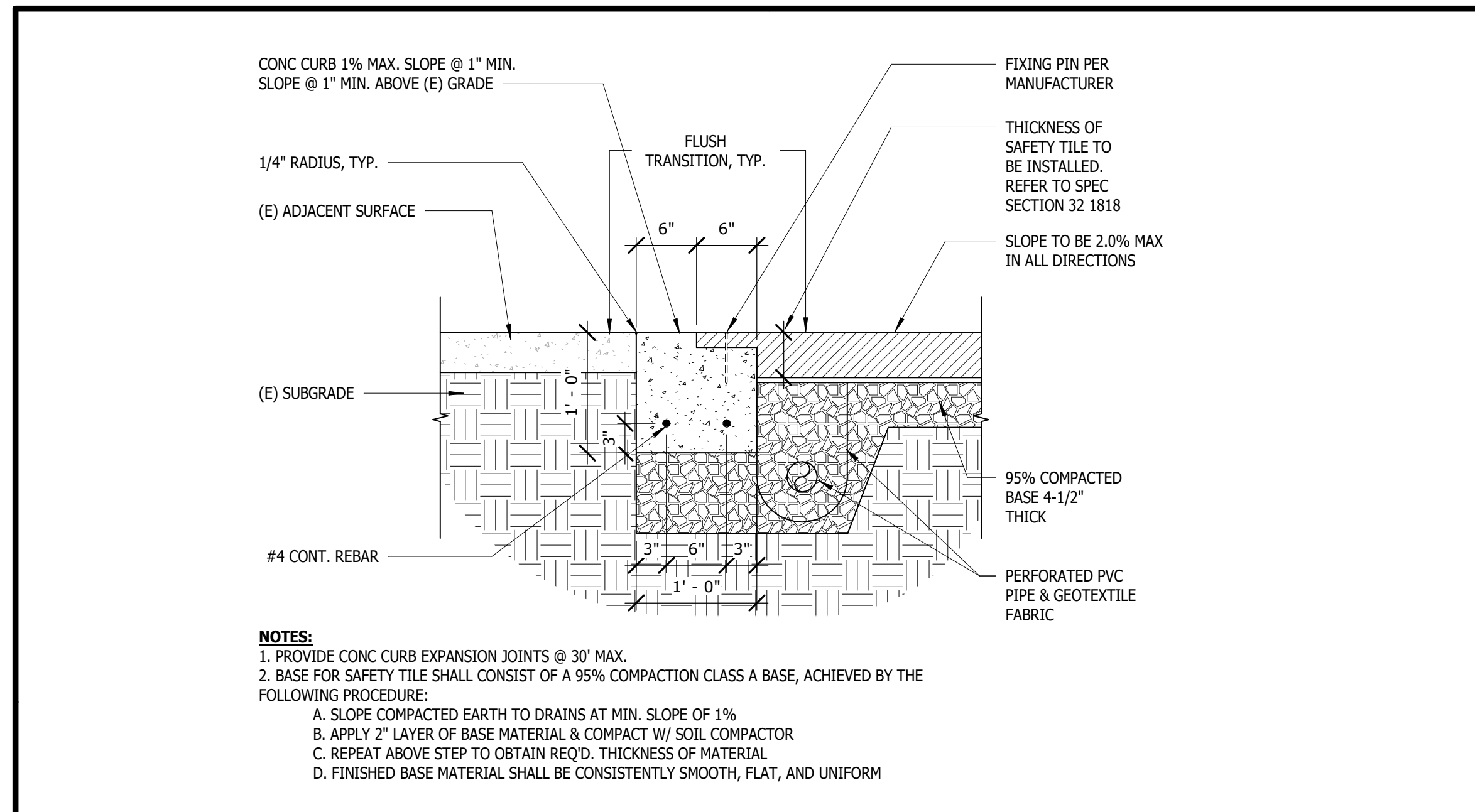
- a. Reword Keynote SD011 to read: 'GRIND AND REMOVE TOP PORTION OF (E) AC PAVING AS NEEDED TO ACHIEVE 2% MAX SLOPE IN ALL DIRECTIONS. FEATHER AND BLEND OUTER EDGES INTO EXISTING PAVING. CONTRACTOR TO FIGURE A MAXIMUM OF 1" GRIND AND REMOVAL.'
- b. See revised attached A003.

**CONTRACTOR QUESTIONS AND ANSWERS**

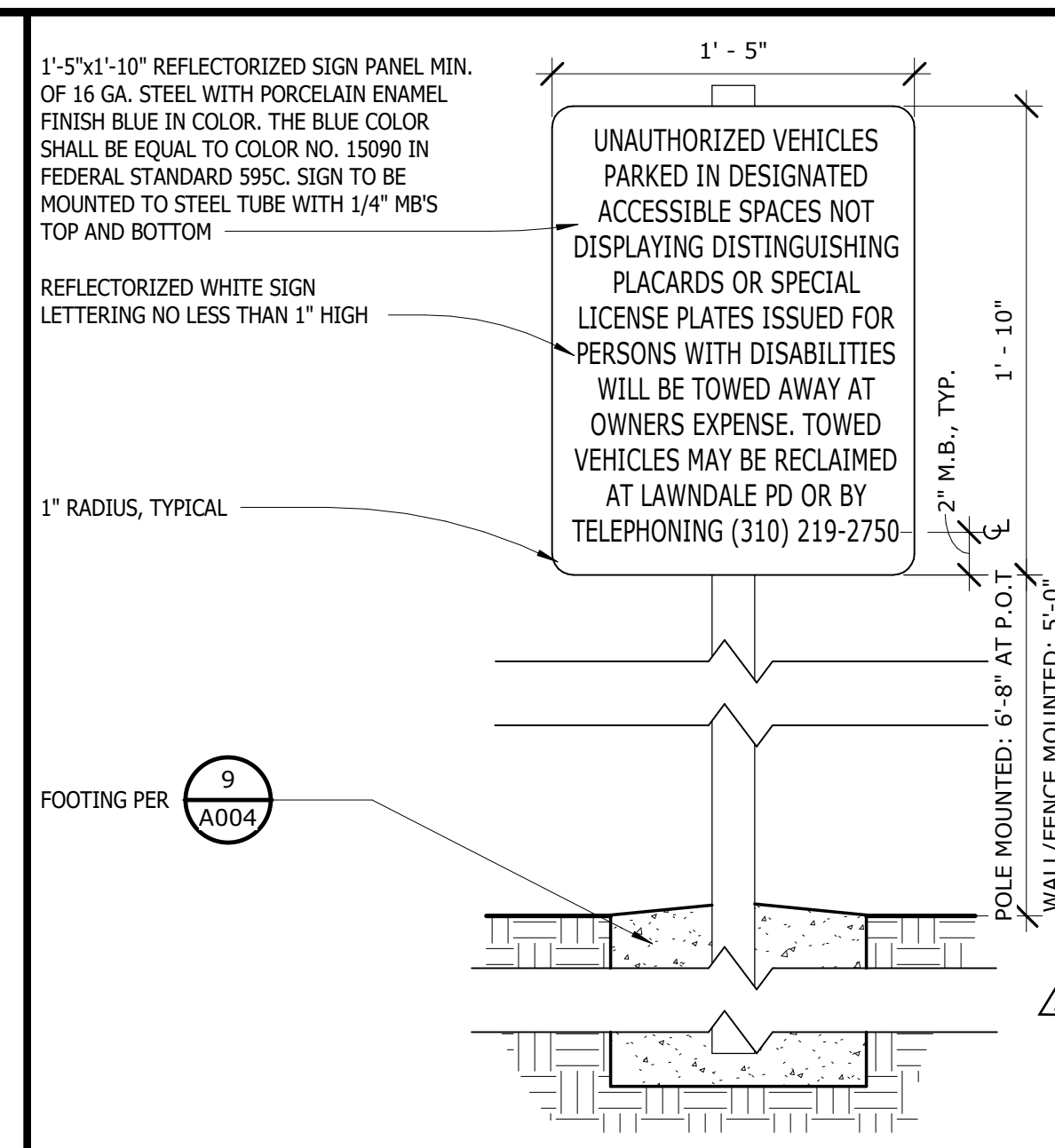
No contractor questions were submitted.

**END OF ADDENDUM 01**



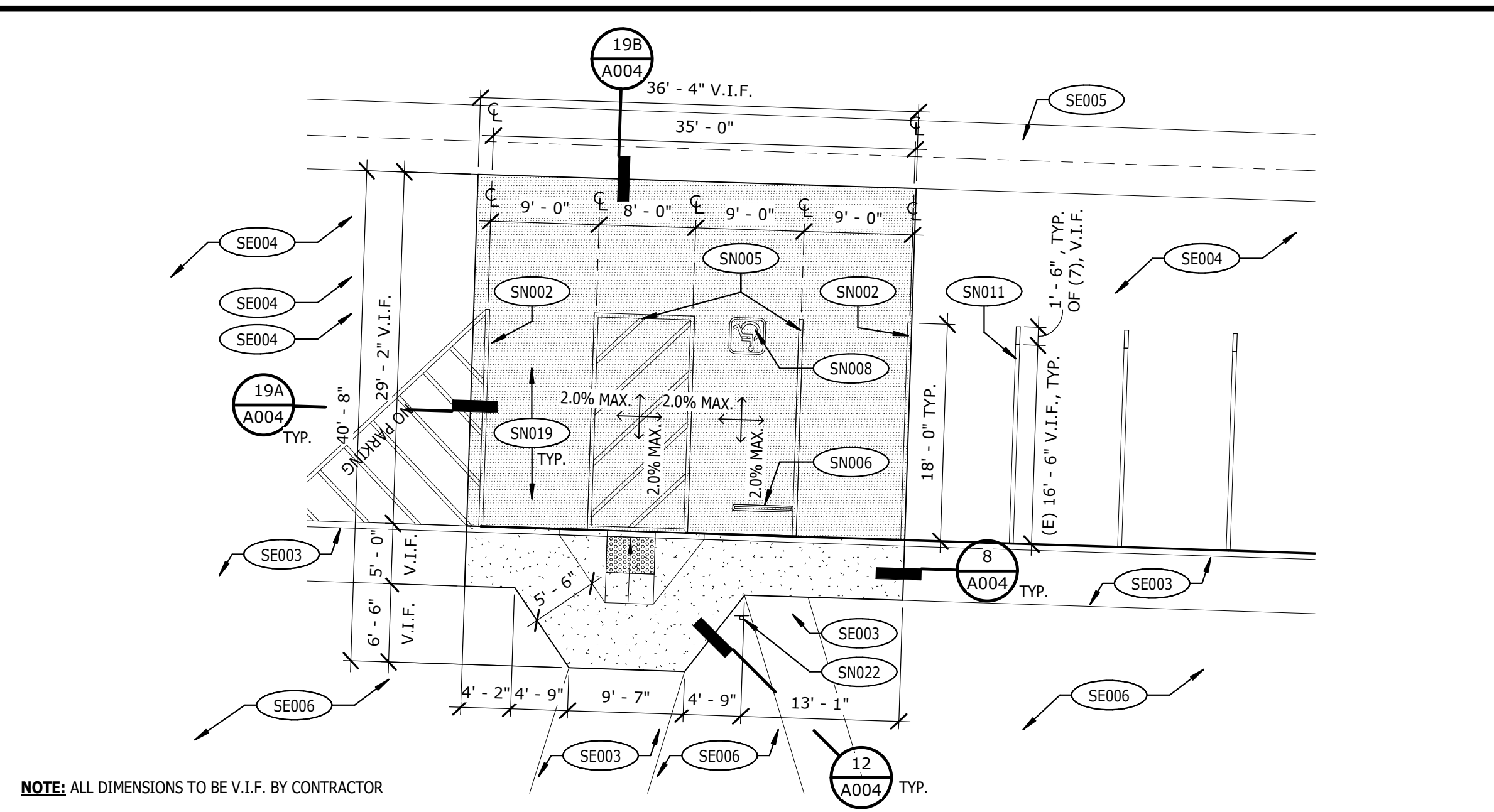


**RUBBER PLAY MAT & CURB DETAIL** 1" = 1'-0" 8

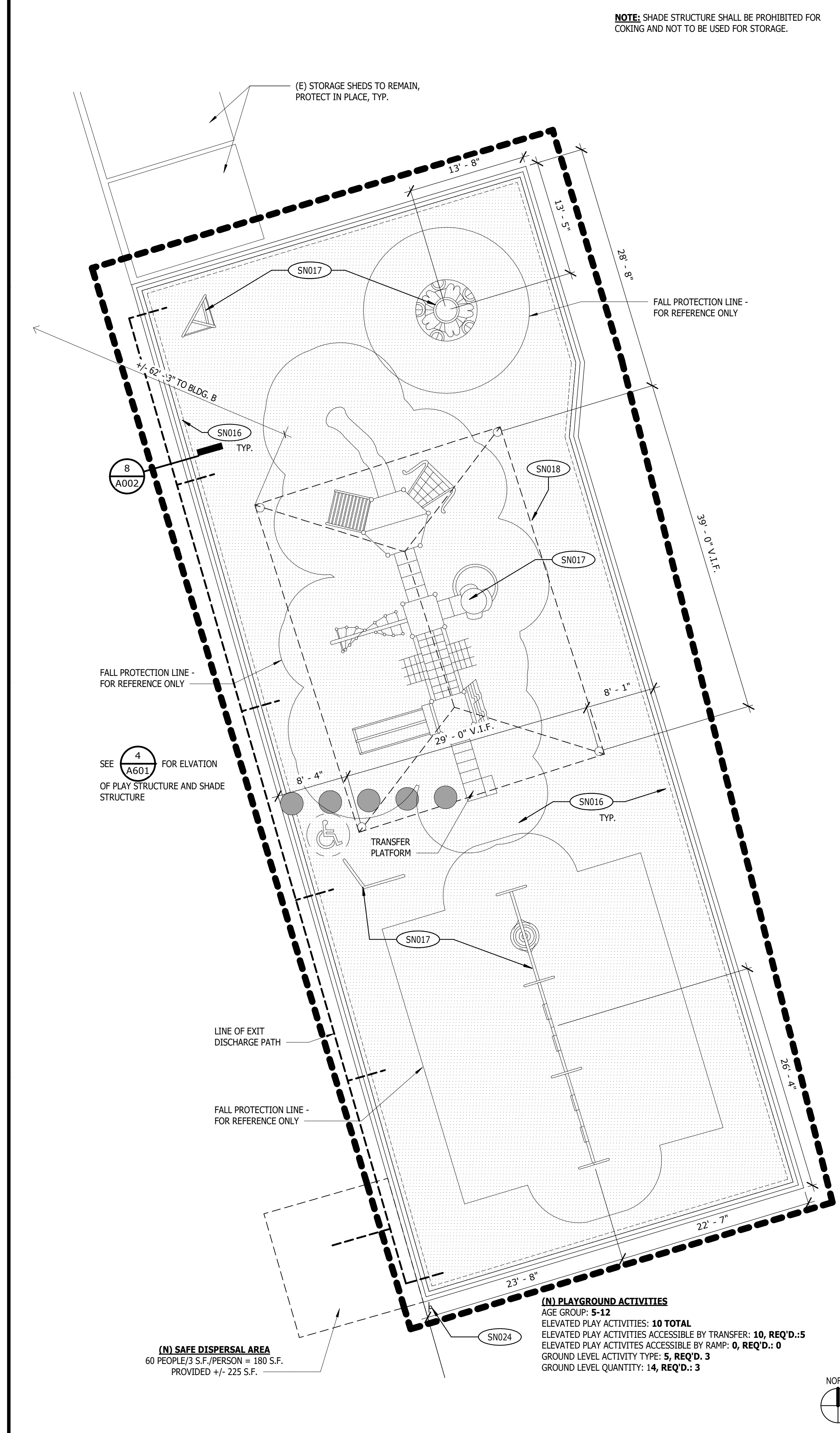


**TOW-AWAY SIGN** 1 1/2" = 1'-0" 6

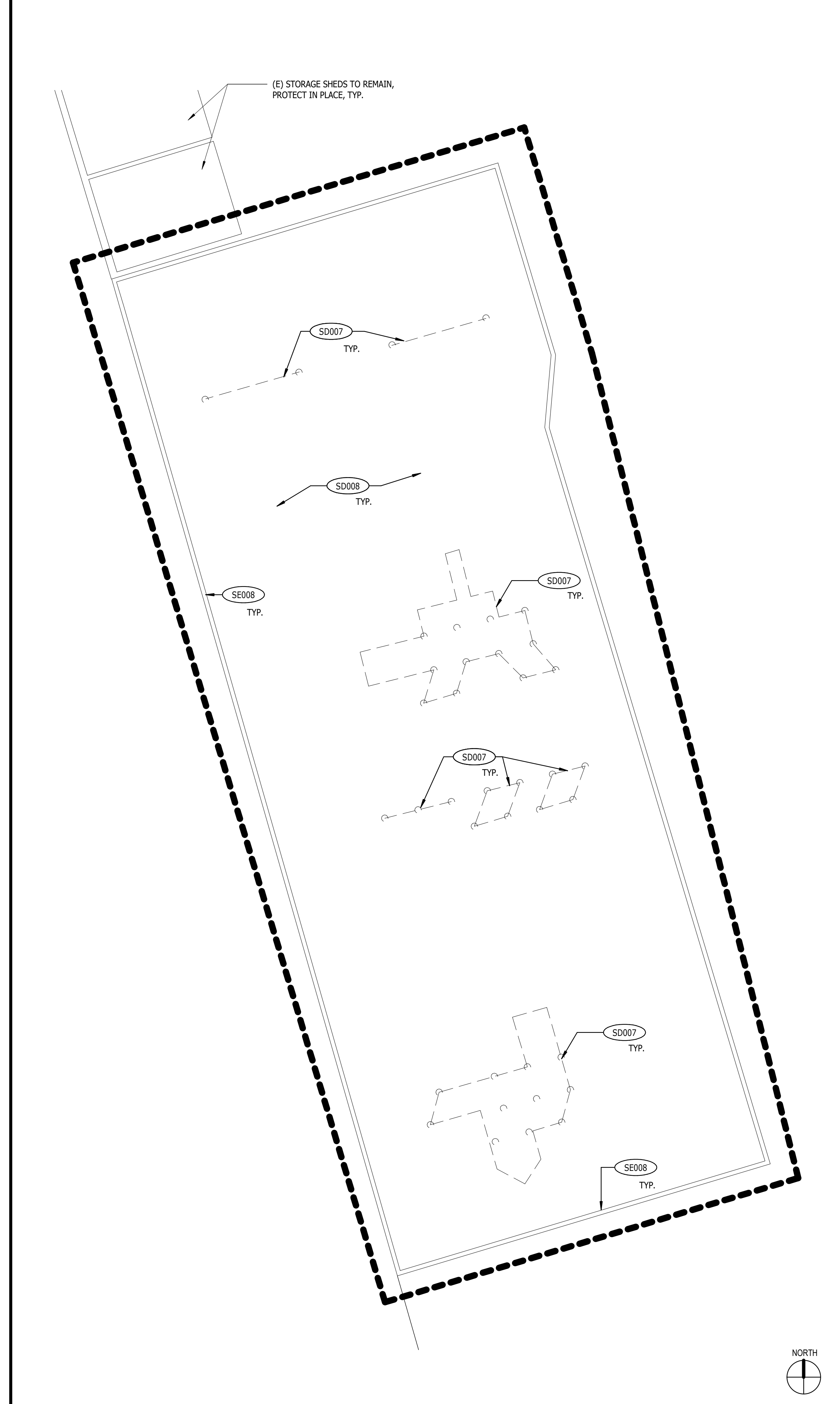
- KEYNOTES**
- SD001 GRIND & REMOVE (E) ACCESSIBLE STALL, AISLE STRIPING, & ISA SYMBOL
  - SD002 REMOVE (E) WHEEL STOP
  - SD004 GRIND AND REMOVE THE TOP 1.5" OF AC PAVING & PREPARE FOR (N) AC OVERLAY
  - SD005 CAREFULLY REMOVE (E) ACCESSIBLE SIGNAGE, POST, & FOOTING IN ITS ENTIRETY. CAREFULLY SALVAGE (E) POST & SIGNAGE TO BE REINSTALLED PER RENO PLAN
  - SD006 SAWCUT & REMOVE (E) CONC PAVING IN ITS ENTIRETY UP TO THE NEAREST CONTROL JOINT. REMOVE (E) PORTION OF LANDSCAPE. PREPARE SURFACE FOR (N) CURB RAMP & CONCRETE PAVING
  - SD007 REMOVE (E) PLAYGROUND STRUCTURES & FOOTINGS IN THEIR ENTIRETY
  - SD008 REMOVE (E) WOOD CHIP SURFACE COVER IN ITS ENTIRETY, TYP.
  - SE001 (E) AISLE STRIPING TO REMAIN, PROTECT IN PLACE, TYP.
  - SE002 (E) CONCRETE PAVING & STAIR TO REMAIN, PROTECT IN PLACE, TYP.
  - SE003 (E) CONCRETE PAVING TO REMAIN, PROTECT IN PLACE, TYP.
  - SE004 (E) AC PAVING TO REMAIN, PROTECT IN PLACE, TYP.
  - SE005 (E) CONCRETE FLOW LINE TO REMAIN, PROTECT IN PLACE, TYP.
  - SE006 (E) LANDSCAPE TO REMAIN, PROTECT IN PLACE, TYP.
  - SE007 (E) CHAINLINK FENCE & GATE TO REMAIN, PROTECT IN PLACE, TYP.
  - SE008 (E) CONC HOWSTRIP TO REMAIN, PROTECT IN PLACE, TYP.
  - SE015 (E) STRIPING TO REMAIN, PROTECT IN PLACE, TYP.
  - SE016 (E) LETTERING TO REMAIN, PROTECT IN PLACE, TYP.
  - SN002 (N) AISLE STRIPING PER 7/A003
  - SN005 (N) ACCESSIBLE AISLE & STALL STRIPING & TEXT PER 1/A003
  - SN006 (N) WHEEL STOP PER 3/A003
  - SN007 PATCH & FILL VOID WITH (N) AC PAVING TO MATCH (E) PER 19A/A003
  - SN008 (N) ISA SYMBOL PER 3/A003
  - SN011 RESTRIPE (E) STALLS PER 2/A003, EXTEND (E) STRIPING TO ALIGN WITH (N) ACCESS STALL AND AISLE
  - SN015 (N) STALL STRIPING PER 2/A003
  - SN016 (N) RUBBERIZED PLAYGROUND SURFACE & CURB PER 7/A002
  - SN017 (N) PLAY STRUCTURE W/ WIND SHADE CANOPY ON EQUIPMENT. NOT PART OF DSA STRUCTURAL REVIEW PER DSA IR A-22, ITEM 10
  - SN018 (N) SHADE STRUCTURE. SEE SET OF SHADE STRUCTURE DRAWINGS
  - SN019 (N) 1.5" MIN. AC PAVING OVERLAY AT 2% MAX. SLOPE IN ALL DIRECTION AT ACCESSIBLE PARKING STALLS. FLUSH NEW AC PAVING INTO EXISTING AC PAVING FOR SMOOTH TRANSITION
  - SN022 PROVIDE & REINSTALL (E) SALVAGED POST AND VAN ACCESSIBLE SIGNAGE. SEE 5/A003 FOR MORE INFO
  - SN024 (N) SAFE DISPERSAL AREA SIGNAGE PER 2/A001



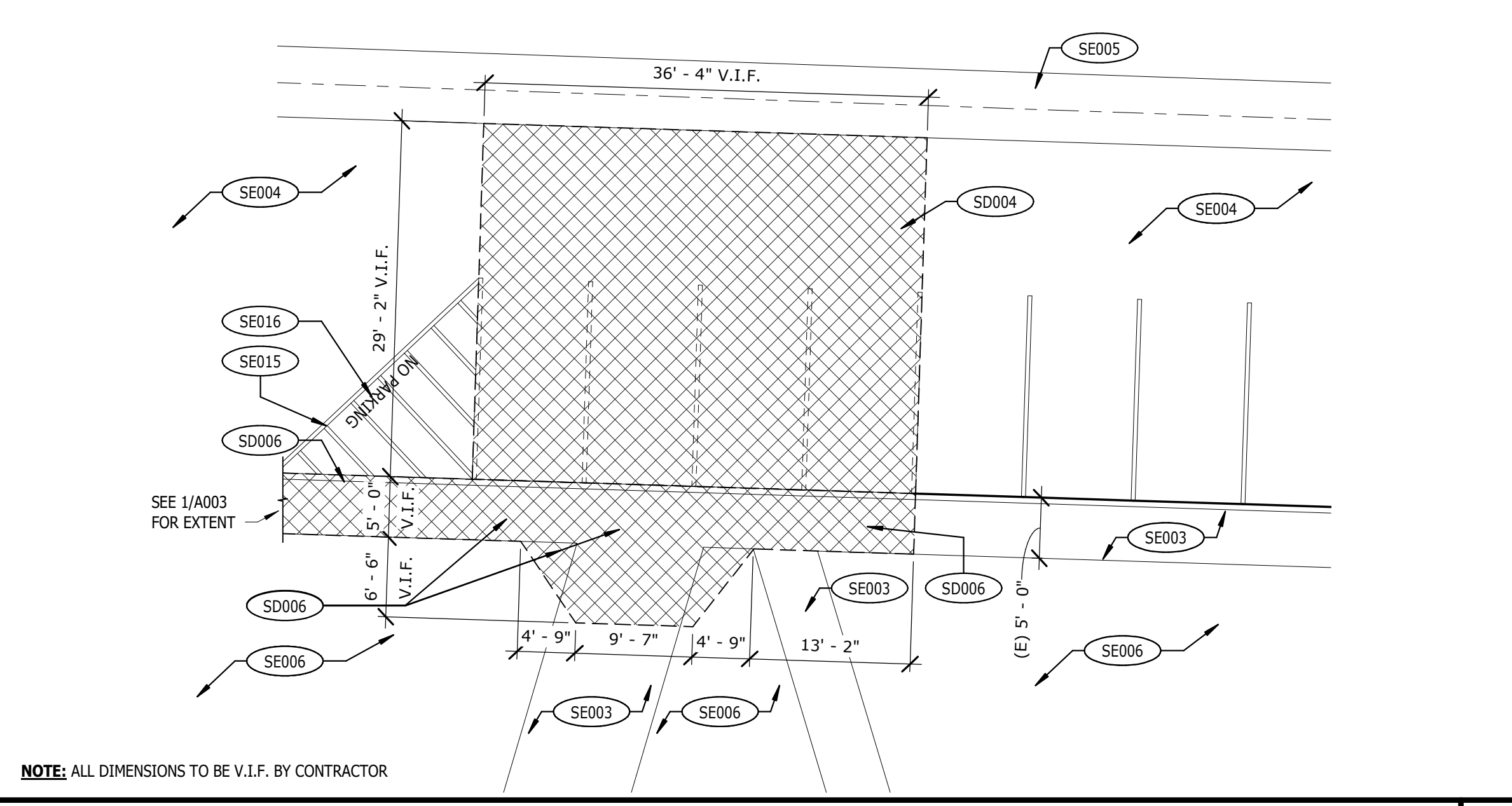
**ENLARGED (N) ACCESS PARKING PLAN - RENO** 1" = 10'-0" 4



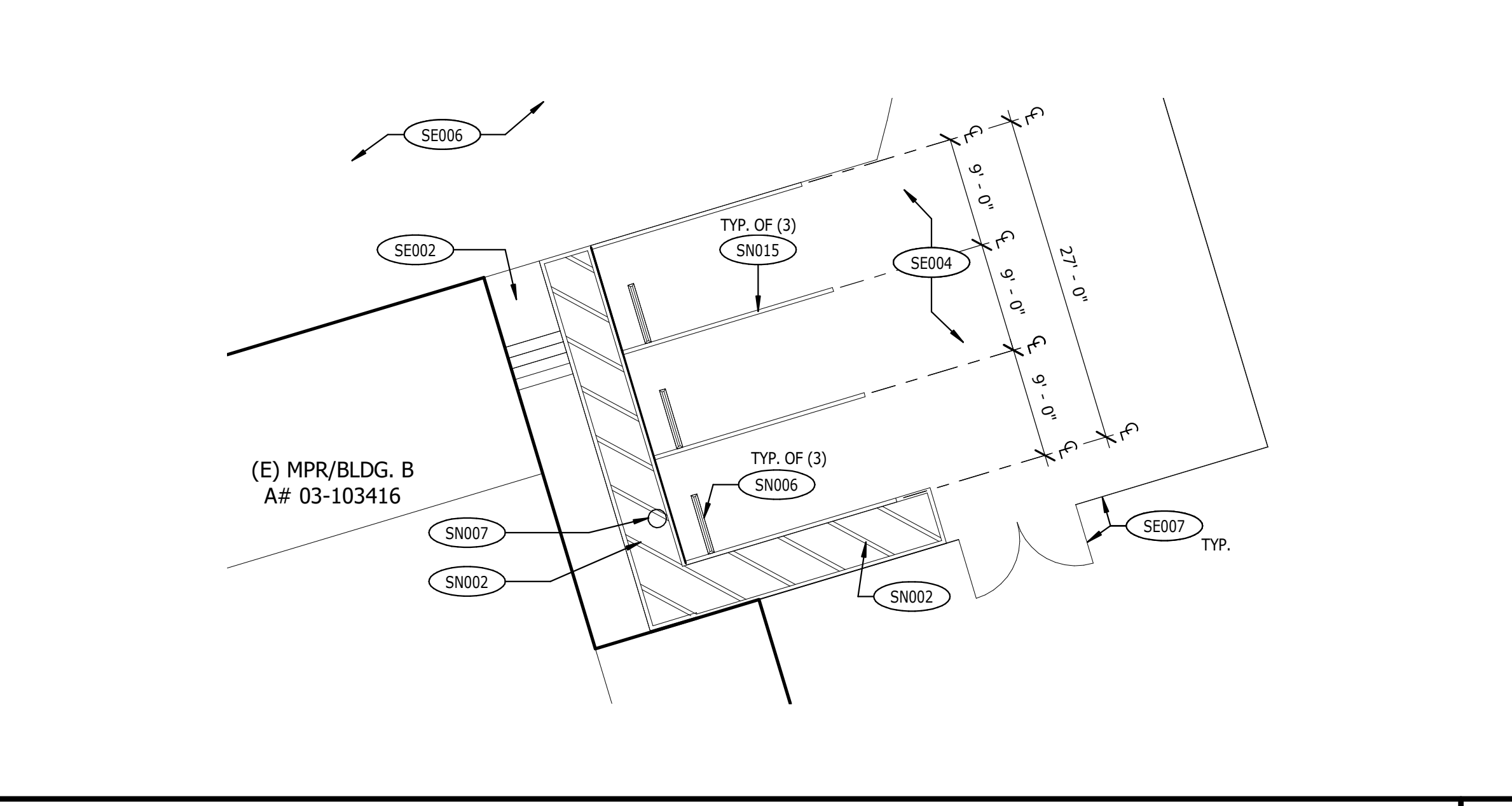
**ENLARGED SITE PLAN - PLAYGROUND - RENO** 1/8" = 1'-0" 7



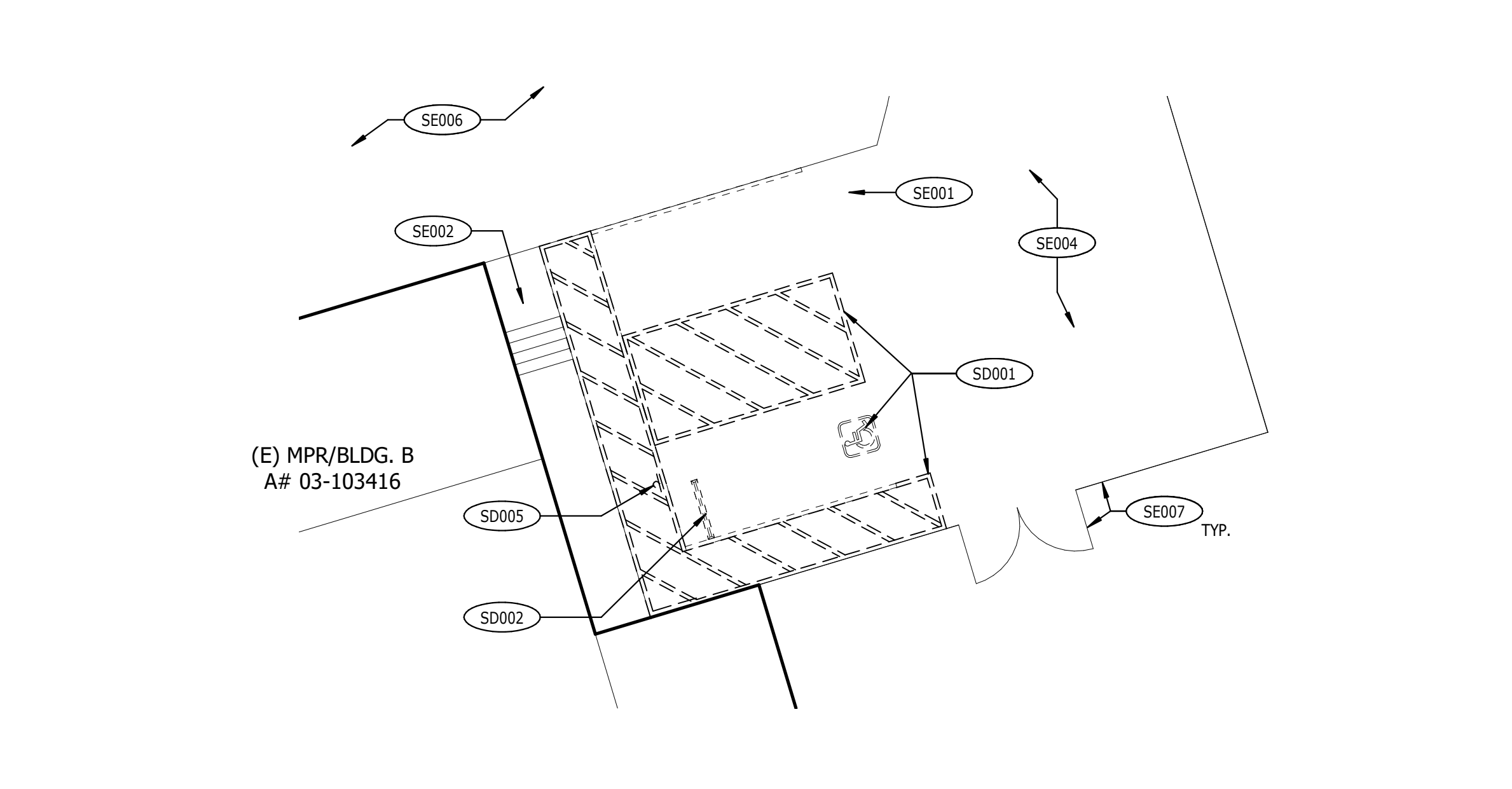
**ENLARGED SITE PLAN - PLAYGROUND - DEMO** 1/8" = 1'-0" 5



**ENLARGED (E) PARKING PLAN - DEMO** 1" = 10'-0" 3



**ENLARGED (N) PARKING PLAN - RENO** 1" = 10'-0" 2



**ENLARGED (E) ACCESS PARKING PLAN - DEMO** 1" = 10'-0" 1

STATE: \_\_\_\_\_

ARCHITECT: **westbergwhite**  
 7700 IRVINE CENTER DR., STE 100  
 IRVINE, CA 92618  
 (714) 508-1780 508-1790 FAX

CONSULTANT: \_\_\_\_\_

PROJECT NAME: \_\_\_\_\_

**(N) PLAYGROUND STRUCTURE**  
**MARK TWAIN ELEMENTARY SCHOOL**  
 3728 WEST 154TH STREET  
 LAWNDALE, CA 90260

CLIENT: **LAWNDALE ELEMENTARY SCHOOL DISTRICT**

4161 WEST 147TH STREET, LAWNDALE, CA 90260

Rev. Date	Description
08/05/2024	ADDENDA 2

JOB NO: 23026.01  
 DATE: 05/03/2024  
 DRAWN: TG  
 CHECK: GC/JG  
 ARCHITECT: PDW  
 ENGINEER: \_\_\_\_\_

SHEET DESCRIPTION:  
 ENLARGED SITE PLANS & SITE DETAILS

SHEET NO: \_\_\_\_\_

