

Sussex-Wantage Schools District Newsletter

November 25, 2020

Calendar

COHORT SCHEDULE

Mondays/Thursdays; Cohort A

Tuesdays/Fridays; Cohort B

Wednesdays; Remote Learning

November

11/25; **EARLY DISMISSAL**

11/26-11/27-**SCHOOL CLOSED** Happy Thanksgiving!

11/30 - 12/11; **Virtual Learning**

December

12/4; 7pm Wantage Township Tree Lighting @ WES

12/14; **School returns to In-Person Cohort Learning**

12/16; 7 pm SWBOE Mtg @ SMS

12/24-12/25; **SCHOOL CLOSED**

12/28-1/1; **SCHOOL CLOSED**

January

1/6; 7pm SWBOE Mtg @ SMS

1/14; **EARLY DISMISSAL**-Staff PD

1/18; **SCHOOL CLOSED**

1/27; 7pm SWBOE Mtg @ SMS

Don't forget to check out our website

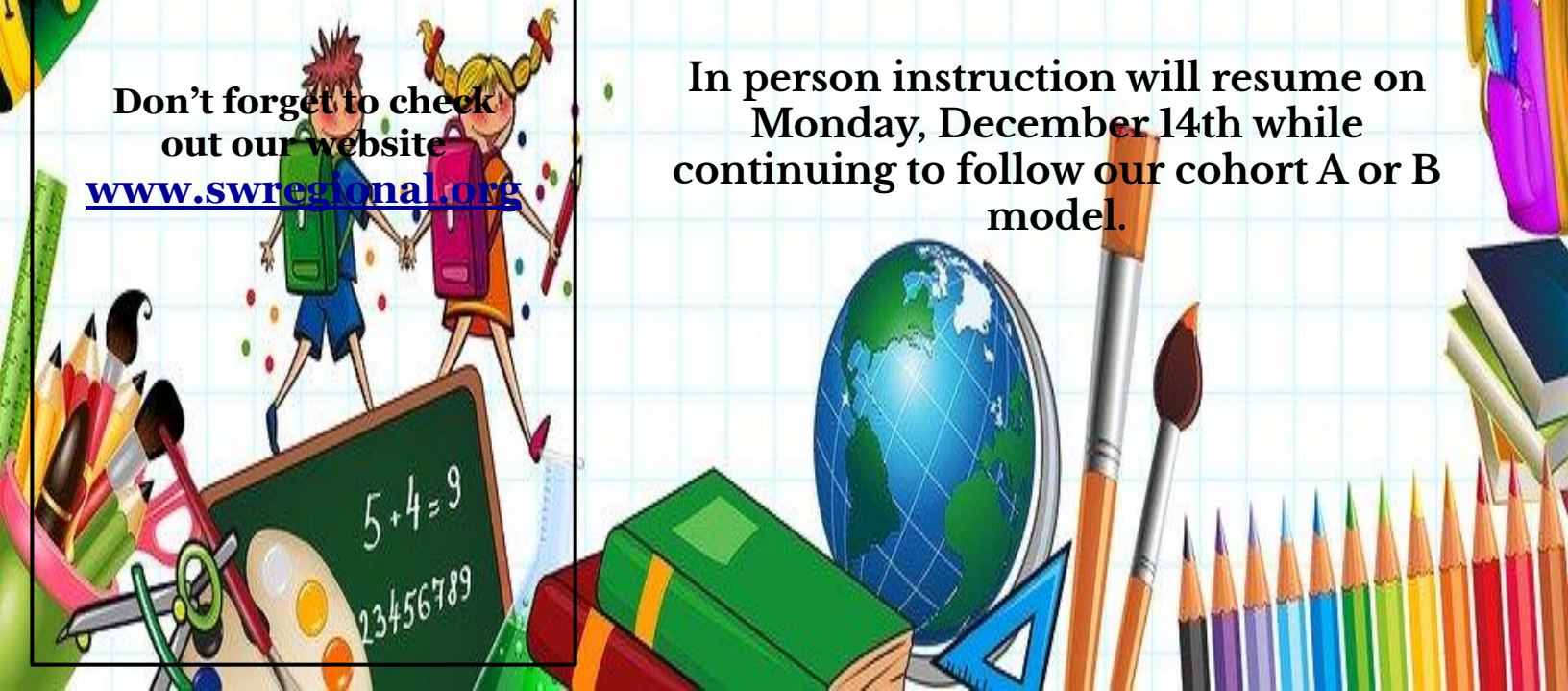
www.swregional.org

Happy Thanksgiving

IMPORTANT

Beginning Wednesday, November 25th, the Sussex-Wantage Regional School District will be switching to full remote instruction.

In person instruction will resume on Monday, December 14th while continuing to follow our cohort A or B model.



Congratulations

**Congratulations to the
SMS students of the month
for November:**

6th Grade- Gabrielle Diee

7th Grade- Matthew Cary

8th Grade- Cody DiCarlo

**These students were recognized at
the Board of Education meeting
on November 18th.**



Meal pickup available

Great news! In order to ensure safe nutritious meals are available to children, the USDA has approved free breakfast and lunch for ALL children enrolled in the Sussex-Wantage Regional School District for a limited time period.

Please pre-order your desired number of meals by clicking on the link below and completing the questionnaire by 9:00 am the **Wednesday prior to the pickup week**.

Pickup is: Tuesday from 4:00 - 7:00 pm
or Wednesday from 3:00 - 6:00 pm .

[Click here for more information and the appropriate order form](#)

Care Program Registration Open

[Click here for the Application](#)

Welcome to the Care Program 2020-2021

The Sussex-Wantage Care Programs were designed to offer a safe, caring environment for your child/children. We are aware that parents need to work during this pandemic, but we must ask that all parents are willing to follow guidelines to keep children safe at all times.

At this time, the Board has opted for two half-day in school days during the initial phase of reopening. Those are the two days per week your child may attend Care programs. Morning Care will open at 7:00 AM and After Care will open at 1:30 PM until 6:00 PM for working parents. Please be aware there is a change in billing as you will be charged for two days per week. When the school enters a new phase of reopening, our billing will also change. Thank you in advance for your patience and understanding.

Due to Covid 19 Pandemic, major changes have been made to the program.

Upon entry each morning, and leaving each afternoon students will have temperature checked

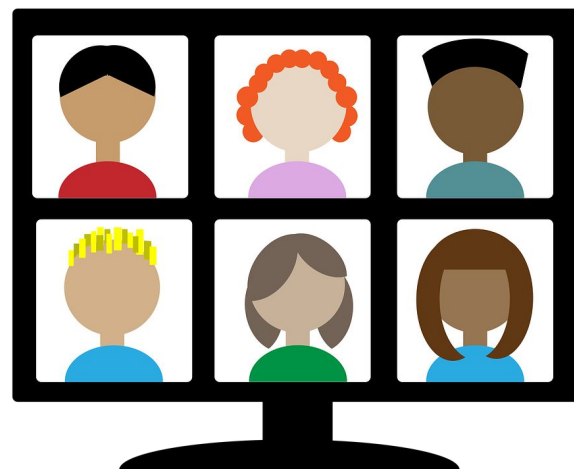
- *All students are required to wear face masks at all times except when eating or drinking*
- *Children must have personal pencil, crayons and other items in container for personal use. No sharing items*
- *Children will be placed in classrooms in groups of 10-12 with social distancing practiced.*
- *Children are encouraged to wash hands often and use hand sanitizer where appropriate.*
- *Limited interaction with toys and equipment will be encouraged.*

SWPTO membership fees are being waived for the 2020 - 2021 school year, so all Sussex-Wantage families, teachers, and staff can be members of the PTO at no cost! You must register, sign up here: <https://zfrmz.com/QqSUa6kK3tVvlpvqcwn3>



The SWPTO will hold their December meeting virtually on Tuesday Dec, 1 at 7:00PM.

Please visit www.swpto.org for details.



PTO Fundraiser



GERTRUDE' S GIVE BACK Sussex Wantage PTO

GROUP NAME

200003

ORGANIZATION ID#

Dear Supporters:

We are pleased to be participating in Gertrude Hawk Chocolates *Gertrude's Give Back Program* as part of our Fundraising program this year. Help support our group! It's easy to participate, simply shop at any Gertrude Hawk Chocolates store and mention our group name **AT CHECKOUT** and **20% of your sale** will be given back to our organization! Shopping days last only for a three day period so make sure you make it in during our dates!

OUR SHOPPING DAYS ARE:

November 27th- 29th (3 days only)



Looking for a store near you?

Visit our website and see **FIND A STORE** to locate the closest store nearest you!

https://gertrudehawkchocolates.com/find_a_store

For additional information on Gertrude's Give Back visit fundraising.gertrudehawkchocolates.com

PTO Fundraiser

PARTYLITE
CANDLES

Stephanie Zerrenner
PartyLite Consultant
201-507-5754
candlechick717@aol.com
www.partylite.com/stephaniezerrenner

November 15, 2020

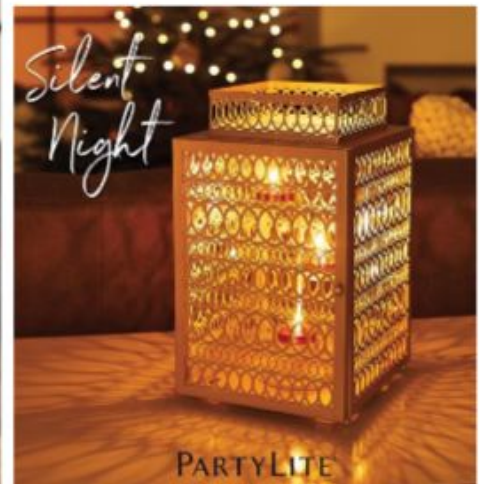
Dear Participant,

I am pleased to announce a PartyLite fundraiser for Sussex-Wantage PTO. Sussex-Wantage PTO will receive 20% of the sales from all orders placed on my website. Sussex-Wantage PTO will also receive a \$25 donation for each Social Shopping Event held by December 10, 2020. I have been doing most of my events on Zoom!! They are so much FUN! Who do you know that loves candles, flameless fragrance, gifts for the holidays or would like to receive free and discounted items for hosting a social shopping event? Tell everyone you know about this fundraiser!!

Be sure to check out the enclosed special offers flyer! The deadline to place orders is **Thursday, December 10, 2020**. This Fundraiser is an Online Fundraiser. All orders can be placed on my website @ www.partylite.com/stephaniezerrenner Please ask your friends and family to let you know when they place their order. **Once an order is placed, please text me at 201-507-5754 with name of the person that has placed an order so I know that their order is for the fundraiser.** I'm excited to share all orders over \$50 will receive **FREE Shipping** & all order below \$50 will only pay \$5.95 Shipping. Be sure to check out My Special Offers Section & My Outlet!! Orders will ship direct to the address on the order & will ship within a week of the order being placed.

Feel free to call/text me or e-mail me with any questions at 201-507-5754 or glowdacios@aol.com.

Sincerely,
Stephanie Zerrenner
Stephanie Zerrenner



COMMUNITY INFORMATION

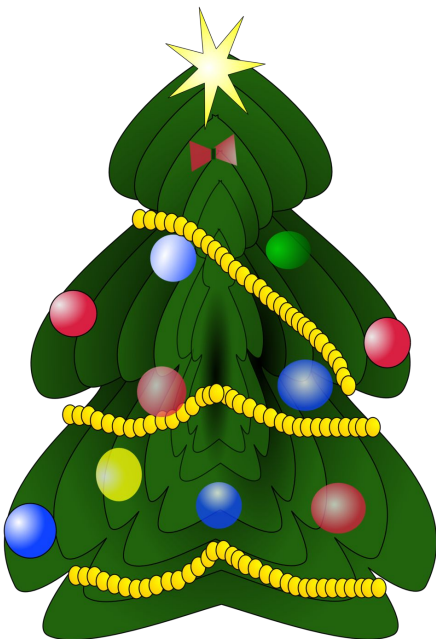
Santa will be visiting the Wantage School to light the Christmas Tree and greet families in front of the tree.

On Friday, December 4th at 7:00 p.m.

Families can drive by, say "Hi" to Santa and receive a gift from one of his elves.

New this year you can enter to win the "Decorate Your Car" contest.

Please check out the Wantage Recreation Facebook page for details.



COMMUNITY INFORMATION

Sussex-Wantage Wrestling Registration is now open!!

Please use the SWWC registration link for registration

www.sussex-wantage-wrestling-club.siplay.com

Sussex-Wantage Wrestling Club

Who are we?

A proud, and long-standing youth athletic program with a tradition of success with children from the Sussex-Wantage sending district. All students in grades K-8 are eligible to register for Sussex Wantage Wrestling Club.

What will my child get out of wrestling?

It is important to SWWC, that all of our athletes compete hard and give their best effort (in the community, classroom, home, practice and matches). For some, it may mean learning the basics and gaining better health and fitness. For others, it may mean competing for a state title. Whatever their goals, SWWC coaches will work with our children and encourage them to achieve their goals.

The sport of wrestling helps build character, perseverance, determination and reinforces teamwork. By becoming part of our program, your child will develop these characteristics and more!. Of course, SWWC will have some fun along the way as well!

Register at the provided link

www.sussex-wantage-wrestling-club.siplay.com





COVID-19 SCHOOL-AGE TUITION ASSISTANCE FOR WORKING FAMILIES

Families can now apply for child care tuition assistance to help with care for children who have remote learning schedules due to the COVID-19 public health emergency.



HOW TO APPLY

- Go to www.ChildCareNJ.gov and complete the online application.
- You will need to submit proof of income and a notice or announcement from your child's school of a remote learning schedule including hours.



WHO IS ELIGIBLE

- You are a NJ resident with a school-age child 5-13 years old.
- Your household income does not exceed \$150,000 a year.
- Your child is attending school with either a part-time or full-time remote learning schedule.



HOW IT WORKS

- Assistance will be paid directly to the licensed child care center you select up to \$634 a month or a registered family child care provider you select up to \$526 a month for full-time care.
- If the assistance doesn't equal the child care provider's rate, the provider may charge you the difference.
- Applications will be considered until funds for this program are exhausted.
- This program ends December 30, 2020.
- For help identifying a child care provider, go to www.childcarenj.gov/ProviderSearch



FOR MORE INFORMATION

Visit www.ChildCareNJ.gov.

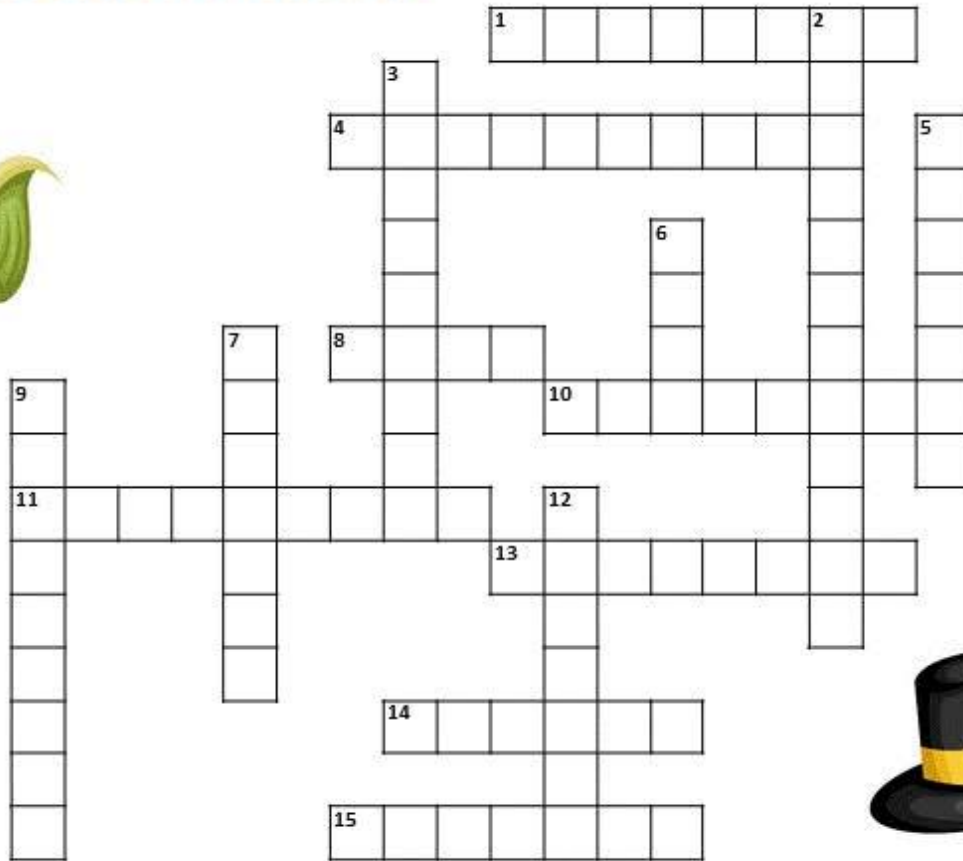


State of New Jersey
Phil Murphy, Governor | Sheila Oliver, Lt. Governor



Department of Human Services
Carole Johnson, Commissioner

Thanksgiving Crossword



© puzz[er]-to-print.com

Across

1. First village established by the Pilgrims
4. Symbol of abundance and nourishment
8. An essential grain in the New World diet
10. Literally, travelers going to a holy place
11. The Pilgrims' boat
13. 16th and 17th century English Protestants
14. The traditional holiday bird
15. Indian who taught the Pilgrims many things

Down

2. 4th Thursday of November
3. A traditional Indian dwelling
5. Gathering of crops
6. Season for harvesting
7. Country the Pilgrims left behind
9. Indian tribe that was present at the first Thanksgiving
12. Bright orange squash used to make pie

1. Plymouth 4. cornucopia 8. corn 10. pilgrims 11. mayflower 13. puritans 14. turkey 15. squanto
2. thanksgiving 3. longhouse 5. harvest 6. fall 7. england 9. wampanoag 12. pumpkin

Email Jen Armstrong at jarmstrong@swregional.org with newsletter submissions

Don't forget to check out our website!
www.swregional.org