

The Wantage Times

January 29, 2021

Please visit us on facebook @
<https://www.facebook.com/swregional/>

Principal's Message

I hope this Newsletter finds everyone well and in good health.

You should have received notification that the District is working to finalize plans to expand opportunities for in person instruction.

Please consider completing a survey using the following link (survey is anonymous).

<https://forms.gle/3QnWxhf7cHPcMrRRA>

In addition, we would love to have more representatives on our Pandemic Response Teams. These meetings are opportunities for stakeholders to contribute their ideas.

The next meeting for WES will be held virtually on Thursday, February 4th @ 4:00 pm. The goal of this meeting is to finalize our approach for expansion. Please let me know if you would like to be a part of our Pandemic Response Team.

I appreciate your continued support and involvement in the learning process.

Sincerely,

Christopher Gregory
Principal



*Portal open for Grades
February 3rd @ 4 pm*

*3rd Marking Period Dates:
January 28th- March 31st*

School Pictures

School pictures have been scheduled for:

WES: March 18th and 19th

Virtual students: March 17th
and 24th 9:00 -12:00 at the
Lawrence School

**Ordering information will be
available at a later date.*



Drop Off & Pick Up

Please be advised that drop off is in the rear of the building and occurs between 8:15 a.m. and 8:45 am. Please exercise caution when dropping off your children. We respectfully request that children exit the vehicle on the passenger side closest to the building for safety. Temperature checks will be taken prior to entering school.

For pick up, parents and guardians should park on the lower lot or near the playground. **All pick up is located in the cafeteria.** Pick up begins at 3:20 pm. Please have identification available when you pick up your child.

The parking area for pick up will be closed until 3:10 pm. We respectfully request that you do not arrive before then. We appreciate everyone's support with our procedures to ensure the safety of all of our students.

Dates to Remember

2/3- Portal open for Grades (4 pm)

2/15- School Closed
President's Day

2/25- BOE meeting at SMS @ 7pm

3/10- Early Dismissal (Staff
Professional Development)

3/14- Daylight Savings

3/18 & 3/19- Picture Day @ WES

3/17 & 3/24- Picture Day for Virtual
students @ CEL



Congratulations to

Kylie Hocko

*for being selected as our
January SW-5 winner!*

Sussex-Wantage PTO
Please visit www.swpto.org
for details

From the SWPTO:

Dear Parents and Students: We are pleased to offer Gertrude Hawk Chocolates as part of our Fundraising program this year. We are holding a Virtual Online Sale.

It's easy to participate! Simply set up an account and share a link so friends and family can shop our Spring Catalog virtually. All online orders are shipped directly to the customer, no need to collect money.

We are Raising Funds For:

Sussex Wantage PTO

Our Virtual Online Sale is From:

Current-March 28th

Our Organization ID # is: 119604

How Do I Get Started? GO TO:

fundraising.gertrudehawkchocolates.com

- 1. Create an account if you don't already have one*
- 2. In your account go to My Sellers*
- 3. Add New Seller*

4. Share your link through email In addition to sharing your sale link through email parents can share your link through social media posts.

Visit:

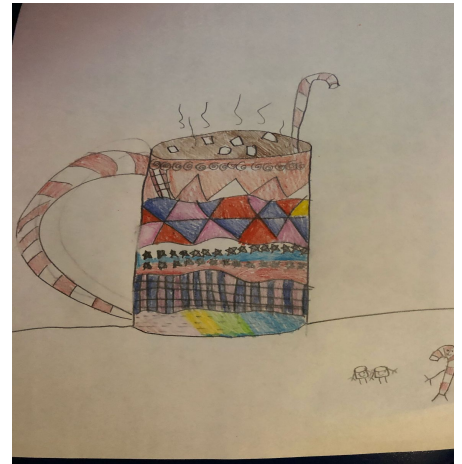
fundraising.gertrudehawkchocolates.com/fundraising-resources for free marketing resources and social media images to help you run a successful fundraiser!

Student Spotlight

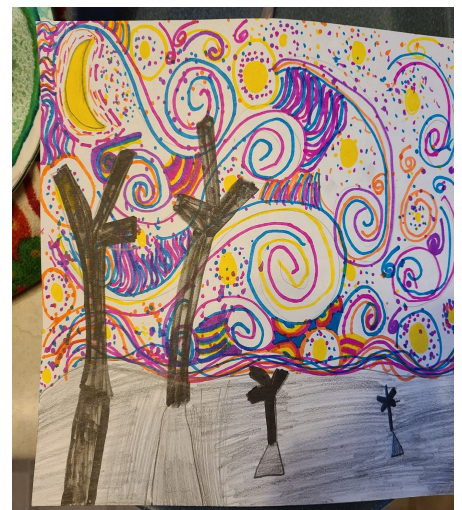
Auggie Konzel



Emily Gulick



Jessica Romash



REGISTER NOW
FOR **SPRING '21**

DIVISIONS OF PLAY

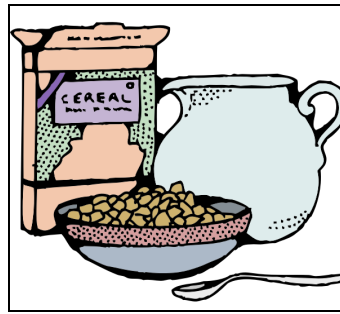
- Tball League - ages 4-6
- Coach Pitch Minors (AAA)-ages 6-8
- Minors (Player Pitch) - ages 8-10
- Majors Division - ages 9-12
- Juniors Division - ages 13-14

Deadline for sign ups is 3/1, late fee of \$30 will be added to all registration received after 3/1, 3/9 is final date, no exceptions. Birth Certificate is required for all first time registrants

REGISTER AT www.SWLLBaseball.com
Volunteers and Coaches are always needed! Please consider helping out to continue this program's success! Email us at info@swllbaseball.com

SUSSEX
WANTAGE
LITTLE LEAGUE

SCAN THE QR CODE TO GO DIRECTLY TO OUR REGISTRATION PAGE

**Free Breakfast
(8:10-8:45 AM)
& Lunch available to all
students**

For those families taking advantage of the free breakfast and lunch pick up, please continue to complete the order form on our website by 9:00 a.m. Wednesday for pickups the following Tuesday and Wednesday.

For families in need of deliveries or if you cannot make your scheduled pickup, please reach out to Christina Riker at criker@swregional.org for assistance.



Please ensure children are dressed for the Cooler Temperatures. We prefer to have outside recess whenever possible and want all students to be dressed appropriately

Sussex-Wantage Regional School District is launching Ways to “Enhance Children’s Activity & Nutrition.” For more information and resources please visit the project’s website at:
<http://www.sussexcountywecanprogram.com/>



www.payschoolscentral.com

If you need help along the way, please contact PaySchools

pcs_help@payschool.com or 1-877-393-6628

NOTICE OF DISCLAIMER-Information in The Wantage Times may come directly from the sponsors of the events. Wantage Elementary School neither sponsors nor endorses these events and is not responsible for the accuracy of the information. If you have any questions, please contact the event sponsor.



L.E.A.D. 
(Learn. Explore. Aspire. Dream.)

ART IN THE OUTDOORS



Girls will:

- Discover bugs
- Make pipe cleaner bird feeders
- Create tissue paper lady bugs
- Complete a nature matching game
- See nature close up
- Make a butterfly suncatcher & magnet
- Create nature art bugs
- Make seashell bracelets
- Paint with water color
- Learn about bees
- Make impressions with Model Magic
- Learn about & listen to nature sights & sounds

FREE

**This program is for girls in
grades K-3 who are
not yet Girl Scouts.**

Questions? Contact Katherine Tejada at ktejada@gsnnj.org or 973-906-0133.

 www.gsnnj.org

      Follow us @gsnnj