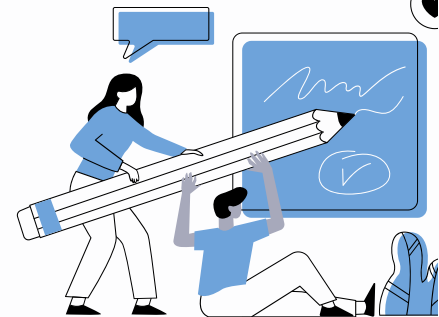




High School Academic Profile

2024 / 2025



Humanitree is a unique and innovative school that stands out for its state-of-the-art facilities, cutting-edge technology, and commitment to providing students with a well-rounded education.

Designed by world renowned architect Rosan Bosch, the school offers a project-based learning approach that fosters creativity, critical thinking, and collaboration among students. Through real-life experiences gained from field trips and guest speakers, students at Humanitree gain a deeper understanding of the world around them and develop skills that prepare them for success in the 21st century.

Technology plays a central role in enhancing education. The school has a VR Studio, Professional Green Room, Editing and Podcasting suites and Cinema. Humanitree is an Apple distinguished school which gives students the opportunity to use Apple products in a creative and innovative way whilst engaging in subject content.

Our internship program provides students with the opportunity to gain valuable work experience in their field of interest prior to university, further enhancing their academic and professional skills.

Humanitree's commitment to attracting and retaining the very best students means scholarships are awarded to outstanding students in areas such as academic ability, artistic, technological, entrepreneurial and sporting prowess.

All these factors make Humanitree School an exceptional choice for parents who seek an innovative and forward-thinking education for their children.

OUR AIM

UNIVERSITY CHOICE

Humanitree's aim is to provide comprehensive university and college services to students so that they can achieve their goal of being accepted into their top-choice universities.

PROJECT BASED LEARNING

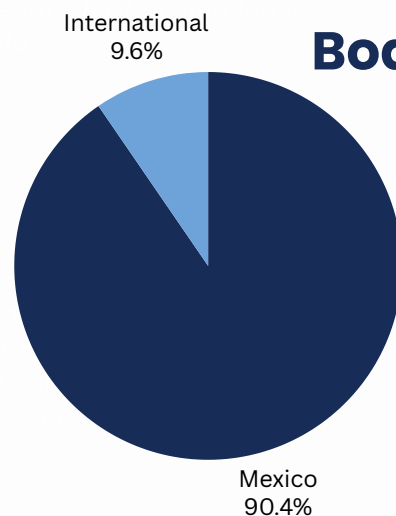
Engage students in hands-on, authentic real-world projects that help develop critical thinking, problem-solving and collaboration skills

LIFE SKILLS

Learning life skills equips students with the necessary knowledge and abilities to navigate the challenges of adulthood, such as managing finances, maintaining healthy relationships and making informed decisions.



Student Body



High School

Enrollment

- Humanitree Hive & Flight has 205 students in the school
- 72 students in High School
- Maximum classroom size 16

Accreditations and Memberships

- IB Diploma Programme School
- Apple Distinguished School
- SEP

Academics

Humanitree offers two different academic pathway options in High School.



Certification

Daul Grading - IB Diploma Programme / SEP



GAVIN JUDD

ACADEMIC DIRECTOR

gjudd@humanitree.edu.mx



LEE KELSALL

TEACHING, LEARNING &
CURRICULUM COORDINATOR

lkelsall@humanitree.edu.mx



MATT LAEMMLI

STUDENT WELLBEING &
PASTORAL COORDINATOR

mllaemml@humanitree.edu.mx



RACHEL SAYAG BESO

CAREER GUIDANCE COUNSELLOR
AND PSYCHOLOGIST

rsayagi@humanitree.edu.mx

Humanitree

Av Constituyentes 1100, Lomas Altas
Miguel Hidalgo, 11950 Ciudad de México, CDMX
www.humanitree.edu.mx

LIST OF COURSES

STUDIES IN LANGUAGE & LITERATURE

- IB English A: Language & Literature HL/SL
- IB Spanish A: Language & Literature HL/SL
- English Humanitree HS Diploma
- Spanish Humanite HS Diploma

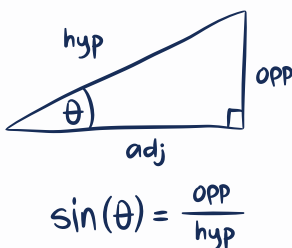


LANGUAGE ACQUISITION

- IB Spanish A: Language & Literature HL/SL
- IB Spanish B
- French Humanitree HS Diploma
- IB French

MATHEMATICS

- IB Maths AA
- IB Math AI
- Maths Humanitree HS Diploma



THE ARTS

- IB Visual Arts
- IB Music
- Art - Photography Humanitree HS Diploma
- Art - Screen Printing Humanitree HS Diploma
- Music Production Humanitree HS Diploma
- Instrumental Humanitree HS Diploma

EXPERIMENTAL SCIENCE

- IB Chemistry
- IB Physics
- IB Biology
- IB Sports Science
- Computer Science Humanitree HS Dip
- Biology Humanitree HS Diploma
- Forensics Humanitree HS Diploma
- Physics Humanitree HS Diploma

INDIVIDUAL & SOCIETIES

- IB Business Management HL
- IB Psychology SL/HL
- IB Economics SL/HL
- IB Theory of Knowledge

HUMANITREE DIPLOMA ELECTIVES

- Marketing
- Human Resource Management
- Finance
- Hospitality Management
- Internships
- Entrepreneurship
- Psychology
- Fashion Design
- Architecture
- Product Design
- ICT in Business
- Social Media in Business
- Sports & Fitness
- Economics

BREAKDOWN



4:1 Student to Teacher Ratio



10 Students Class Average



52% UK / 14% US / 27% Mexican Teachers



55% of Teachers hold a Masters Degree or Higher



15.5 years average teaching experience with 6.5 years IB experience

IBDP Pass Rate 100%

IB Average Points – 31

for Passing Diploma Students

EXTRA CURRICULAR

Social Action

Duke of Edinburgh

First Challenge Robotics

ITAM Enterprise Competition Winners

Musical Production

Concerts

Football League

Student University Acceptances (22–24)

US, UK, Canada, Spain, Mexico, Switzerland

