

Community Assessment Update

South San Antonio Independent School
District
Head Start Program
2023-2024

Disclaimer

The information presented in this Community Assessment was acquired and analyzed using the most recent and relevant data available. Interpretations, estimates, and analyses are those of the authors and may not reflect the views of South San Antonio ISD, or the National Head Start Program. Additionally, the authors arrived at all conclusions independently of the grantee to maintain a data-driven, theoretically sound, and objective assessment incorporating data from all available sources. This Community Assessment Update was completed and prepared by:

The Institute for Demographic and Socioeconomic Research (IDSER)
The University of Texas at San Antonio
One UTSA Circle
San Antonio, TX 78249
(210) 458-6530

Lloyd B. Potter, Ph.D., is responsible for the content of this document which was produced with and contributions of M.Salaha Uddin, Ph.D., and Po-Chun Huang, Ph.D,

Table of Contents

| | |
|--|----|
| Table of Contents | ii |
| 1. Executive Summary | 7 |
| 2. Grantee Profile | 10 |
| Program Overview..... | 10 |
| Geography..... | 10 |
| Service Provider..... | 13 |
| 3. Demographic Profile of Bexar County | 14 |
| Population Growth..... | 14 |
| Projected Population..... | 20 |
| Race and Ethnicity..... | 22 |
| Household Structure..... | 34 |
| Foster Children..... | 36 |
| Disabled Children..... | 39 |
| Homeless Children..... | 40 |
| 4. Education, Health, Nutrition and Social Service Needs | 43 |
| Education..... | 43 |
| Health and Nutrition..... | 46 |
| Social Services..... | 47 |
| Income and Poverty..... | 49 |
| Housing..... | 52 |
| Homeless Population..... | 54 |
| 5. Eligibility Estimates | 55 |
| Method Used to Estimate Age and Income Eligibility..... | 55 |
| Estimated Number of Children with a Disability by Type..... | 58 |
| 6. Available Resources for Social Services | 62 |
| Health..... | 62 |
| Nutrition..... | 63 |
| Child Abuse and Neglect..... | 64 |
| Housing..... | 64 |
| Childcare..... | 65 |
| Public Pre-Kindergarten and Early Education..... | 69 |
| Pre-K 4 San Antonio..... | 72 |
| Resources and Services by Children with Disabilities..... | 74 |
| Homeless Population..... | 74 |
| Charter Schools..... | 75 |
| Local Head Start Programs in Bexar County..... | 79 |
| 7. Significant Changes between 2019 and 2021 | 82 |
| 8. Strengths of the Community | 82 |
| 9. Summary and Conclusion | 82 |
| Appendix A. Characteristics of Select Bexar County School Districts | 84 |

Table of Tables

Table 3-1 Bexar County Population Growth Comparison between Texas and the United States, 2010, 2020..... 14

Table 3-2 Estimated Bexar County Components of Population Change between 2010 and 2020 14

Table 3-3 Historic and Forecast Population in South San Antonio ISD and Select ISDs, 2012-2023 16

Table 3-4 Number of Births for South San Antonio ISD 2016-2020 16

Table 3-5 Births Occurring by Mother’s Characteristics, Selected Geographies, 2020 17

Table 3-6 Births Occurring in Bexar County, 2010-2020 19

Table 3-7 Births Occurring in Texas, 2010-2020 19

Table 3-8 Bexar County Foreign Born Population Comparisons for South San Antonio ISD and Selected Districts, 2018-2022 21

Table 3-9 Racial and Ethnic Composition Comparison Bexar County, Texas, and the United States, 2018-2022 22

Table 3-10 Racial and Ethnic Composition Comparison for Bexar, Collin, Dallas, Denton, and El Paso Counties, 2018-2022 23

Table 3-11 Racial and Ethnic Composition Comparison for Fort Bend, Harris, Hidalgo, Tarrant, and Travis Counties, 2018-2022 23

Table 3-12 Racial and Ethnic Composition Comparison for South San Antonio ISD, 2018-2022 24

Table 3-13 Language Spoken at Home Population 5 Years and Over, 2018-2022..... 29

Table 3-14 Language Spoken at Home Population 5 Years and Over South San Antonio ISD, 2018-2022 30

Table 3-15 Estimated Number of Bilingual Learners, South San Antonio ISD, 2022 33

Table 3-16 Estimated Number of Bilingual Classes Needed, South San Antonio ISD, 2022 33

Table 3-17 U.S., Texas, and Bexar County Population by Age, 2018-2022..... 34

Table 3-18 South San Antonio ISD Populations by Age, 2018-2022 35

Table 3-19 South San Antonio ISD Demographic and Household Characteristics, 2018-2022.. 35

Table 3-20 Bexar County, Texas and United States Demographic and Household Characteristics, 2018-2022 35

Table 3-21 Yearly Average of Children in Paid Foster Care (0-17 Years), Bexar County, 2018-2022 37

| | |
|---|----|
| Table 3-22 Number of Children Under 18 Years by Relationship to Head of Household, Selected School Districts, 2018-2022 | 37 |
| Table 3-23 Number of Children Under 18 Years by Relationship to Head of Household, Selected Geographies, 2018-2022 | 38 |
| Table 3-24 Foster Care Students, Selected Districts, 2022-2023 | 38 |
| Table 3-25 Current and Forecasted Number of Foster Care Children aged 3-4 by ISD, 2020-2024 | 39 |
| Table 3-26 ECI Enrollment for Bexar County and Texas*, FY 2021 | 39 |
| Table 3-27 Estimated number and percent of children with a disability under the age of 5 year, 2018-2022 | 40 |
| Table 3-28 Families Experiencing Homelessness in the South San Antonio ISD, 2022 | 40 |
| Table 3-29 Families Experiencing Homelessness in Bexar County and Texas, 2022..... | 41 |
| Table 3-30 Homeless Students, Selected Districts, 2022-2023 | 41 |
| Table 3-31 Forecasted Homeless 3-4 Yrs Student by ISD, 2021-2025 | 42 |
| Table 4-1 Educational Attainment among Persons Aged 25 Years and Older, Bexar County, Texas, the United States, 2018-2022..... | 43 |
| Table 4-2 School Enrollment by Level of School for the Population 3 Years and Over, South San Antonio ISD, 2018-2022..... | 45 |
| Table 4-3 School Enrollment by Level of School for the Population 3 Years and Over, 2018-2022 | 45 |
| Table 4-4 Percent of Public Assistance Received by Bexar County Residents, 2017-2021..... | 46 |
| Table 4-5 Percent of Public Assistance Received by SSAISD, Bexar County, and Texas..... | 47 |
| Table 4-6 Confirmed Victims of Child Abuse/Neglect-Bexar County, 2014-2022..... | 48 |
| Table 4-7 Median Household Income and Per Capita Income in Dollars, Selected Areas, 2014-2018, 2016-2020, 2018-2022..... | 49 |
| Table 4-8 Percent Change in Income, Selected Areas 2014-2018, 2018-2022 | 50 |
| Table 4-9 Income and Poverty in South San Antonio ISD, Area School Districts, Bexar County, and Selected School Districts, 2018-2022..... | 51 |
| Table 4-10 Forecasted Births Born into Poverty, South San Antonio ISD and Select School Districts, 2021-2025..... | 52 |
| Table 4-11 Housing Characteristics for South San Antonio ISD, Bexar County, and Texas, 2018-2022 | 53 |
| Table 5-1 Estimates of Age and Income Eligible Children for Head Start by District, 2018-2022 | 55 |

| | |
|--|----|
| Table 5-2 Projected Bexar County Population, by Race: Ages 3-4 Years, 2022-2032..... | 56 |
| Table 5-3 Projected Number of Bexar County Age- and Income-Eligible Children, Bexar County, 2022-2032 | 57 |
| Table 5-4 Forecast Income Eligible Children by ISD, 3-4 Year Olds, 2022-2027 | 57 |
| Table 5-5 Disability Counts by Primary Disability for Select School Districts, 2022-2023 | 59 |
| Table 5-6 Estimated Number of Children with Disabilities by Selected School District, Bexar County, 2022-2023 | 60 |
| Table 6-1 Total Childcare Capacity and Population for South San Antonio ISD, 2022..... | 66 |
| Table 6-2 Childcare Capacity in Public Pre-Kindergarten and Early Education Classes in San Antonio Area School Districts, 2022-2023 | 70 |
| Table 6-3 Change in Pre-kindergarten and Early Education Enrollment in Select Districts, 2020- 2021 to 2022-2023..... | 71 |
| Table 6-4 Pre-K 4 SA Enrollment by District, 2019-2020* | 73 |
| Table 6-5 Charter Schools serving EE, PK, and KG students in Select School Districts, 2023- 2024 | 76 |
| Table 6-6 Combined Program, Staff and Enrollment Characteristics, Bexar County Head Start Providers, 2022..... | 79 |
| Table 6-7 Service Characteristics for Combined Program, Bexar County Head Start Providers, 2022 | 80 |
| Table 6-8 Enrollment Status for South San Antonio ISD and Bexar County Head Start Providers, 2022 | 81 |
| Table A-1 Selected Social Characteristics Bexar County School Districts | 84 |
| Table A-2 Selected Economic Characteristics Bexar County School Districts | 85 |
| Table A-3 Selected Housing Characteristics Bexar County School Districts..... | 87 |
| Table A-4 Demographic and Housing Estimates Bexar County School Districts | 89 |

Table of Figures

| | |
|---|----|
| Figure 3-1 Births per ZIP Code in Bexar County, 2020 | 17 |
| Figure 3-2 Bexar County Projected Growth by Race and Ethnicity, 2010-2050..... | 20 |
| Figure 3-3 Percent of the Population that is Minority Race/Ethnicity by Census Tract, 2018- 2022 | 25 |
| Figure 3-4 Percent of the Population that is Hispanic by Census Tract, Bexar County, 2018- 2022 | 26 |
| Figure 3-5 Percent of Population that is Non-Hispanic Black by Census Tract, Bexar County, 2018-2022 | 27 |
| Figure 3-6 Percent of Persons Aged 5 Years and Older that Speak Spanish at Home by Census Tract, Bexar County, 2018-2022 | 28 |
| Figure 3-7 Percent Bilingual/ESL Enrollment, by School District, 2022-2023 | 30 |
| Figure 3-8 Percent of Students Participating in Bilingual/ESL Education by School District, 2022-2023 | 31 |
| Figure 4-1 Percent of Adult 25 Years and Older with High School Diploma/GED or Greater, 2018-2022 | 44 |
| Figure 4-2 Confirmed Victims of Child Abuse/Neglect by Zip Code, Bexar County, 2012..... | 48 |
| Figure 6-1 Licensed Childcare Facilities by Capacity, Bexar County, 2023 | 67 |
| Figure 6-2 Licensed Childcare Facilities by Capacity, South San Antonio ISD, 2023 | 68 |
| Figure 6-3 Map of Pre-K for San Antonio Centers, 2020 | 72 |

1. Executive Summary

Significant findings for the 2023 Community Assessment Update for South San Antonio (SSA) are as follows:

- Population in SSAISD has grown by 9.5% between 2012 and 2022.
- The total number of births in the ZIP codes overlapped with the SSAISD area was 1,610 in 2020.
- The percentage of teen aged women in the ZIP codes overlapped with the SSAISD area is 12%, higher than the Bexar County (6.2%) and Texas (6.1%)
- The percentage of births to single mothers in the ZIP codes overlapped with the SSAISD area is 62%, higher than the Bexar County (45.0%) and Texas (41.5%).
- The percentage of the population in SSAISD that are immigrants is higher compared to most school districts in Bexar County.
- The population in SSAISD is predominantly Hispanic (90.5%) which is higher than Bexar County and Texas. About 6.4% of the population in SSAISD are non-Hispanic white.
- Spanish is the language spoken in 56.6% of SSAISD households compared to 34% in Bexar County.
- About 20.6% of students are enrolled in either Bilingual or ESL programs in SSAISD which is greater than most school districts in Bexar County.
- An estimated 9 bilingual Head Start classrooms are needed in SSAISD.
- The population in SSAISD is younger than in Bexar County and Texas with a median age of 31.8 and 7.8% of the population being under 5 years old.
- The percentage of households that are family households is higher in SSAISD than in the County or State as is the percentage of households that are single parent households.
- There are an estimated 26 foster children in SSAISD which as a percentage of children is similar to most school districts in the area.
- There are an estimated 26 children under 5 years of age with a disability. This percentage of young children is slightly lower compared to Bexar County and Texas. This estimate also has a large margin of error (sampling error) associated with it. However, the SSAISD serviced 71 children with a disability through the Head Start program in 2020-2021.
- There were about 7 homeless families served by the SSAISD Head Start program. This as a percentage (2.3%) of families served by Head Start is less than the County (6.8%) and State (4.5%). There were about 39 homeless students served by SSAISD which is

about 0.50% of the student population. This is slightly lower than most school districts in Bexar County. The forecast of homeless children in SSAISD suggests lower numbers in the coming years.

- Educational attainment among SSAISD residents is lower compared to the county and state. Only 9.8 percent of the adults have a bachelor's degree or higher.
- Use of social programs was more prevalent among SSAISD residents than the County and State. About 12.9 percent received Supplemental Security Income and 30.6 percent received Supplemental Nutrition Assistance (SNAP).
- Child abuse and neglect data are unavailable for school districts, but some of the higher rates in Bexar County are found in SSAISD ZIP codes.
- There are only a few ISDs in Bexar County in which median household and per capita income is lower than the SSAISD. Over the decade, there have been improvements in median household and per capita income.
- Poverty is also a significant issue in SSAISD with approximately 30.5% of people with related children under five years of age living below poverty. The forecast for the number of births in households living below poverty is fairly stable.
- The housing stock in SSAISD tends to be older, with about 49.9% of housing units being renter occupied and households tend to be larger and more crowded compared to Bexar County and Texas.
- Estimates of the age and income eligible population in SSAISD is 463, with current enrollment at 329. Approximately 134 children in SSAISD are age and income eligible but are not enrolled.
- SSAISD has 1152 children of all ages with disabilities and an estimated 247 who are age eligible for Head Start. The forecast of children with disabilities suggests that there may be 246 age eligible children by 2026.
- SSAISD has numerous services and resources that can be deployed to address the needs of children in the Head Start program.
- There appears to be a shortage of availability of childcare within SSAISD although there is additional childcare capacity in the surrounding area.
- There are other early childhood education programs in SSAISD and the surrounding area.
- There appears to be a gap between the number of children eligible for the program (468) and the slots available for the district (288). This disparity affects many residents who are mainly minority groups with low incomes, a high proportion of children under age five and below the poverty threshold, which provides evidence for more slots to fill this gap.

Please refer any questions or comments regarding the content or methods to
Lloyd.Potter@utsa.edu, phone number: (210) 458-6530.

2. Grantee Profile

Program Overview

Bexar County is in South Central Texas and encompasses the city of San Antonio. Bexar County includes San Antonio and extends into the rural and suburban areas surrounding the city. In the central-southwestern part of Bexar County is the South San Antonio Independent School District (SSAISD) (see Figure 2-1). SSAISD is a nonprofit public agency that provides public education for all children from kindergarten through 12th grade and preschool services to approximately 329 preschool-aged students from within SSAISD's service area. SSAISD is located near the heart of San Antonio, encompasses 21 square miles, and is a unique area about four miles southwest of the downtown area of the nation's 7th largest city and about 10 miles north of the area's agricultural farmlands (see Figure 2-1). The community has relatively few indigenous industries and fewer highly skilled, high-paying jobs. Figure 2-2 provides details about the SSAISD service area. [NOTE: The SSAISD service area is outlined in gray with ZIP codes labeled]

Geography

San Antonio is the seat of Bexar County, located in South Central Texas, south of Austin but north of Laredo. The County's estimated population was 2.05 million in 2022 (US Census Bureau, 2023 Population Estimates). San Antonio, Bexar County's largest city, contained an estimated population of 1.47 million persons in 2022 (US Census Bureau, 2022 Population Estimates, City and Town Population Totals). South San Antonio ISD provides services to eligible residents living in the school district (see Figures 2-1 and 2-2).

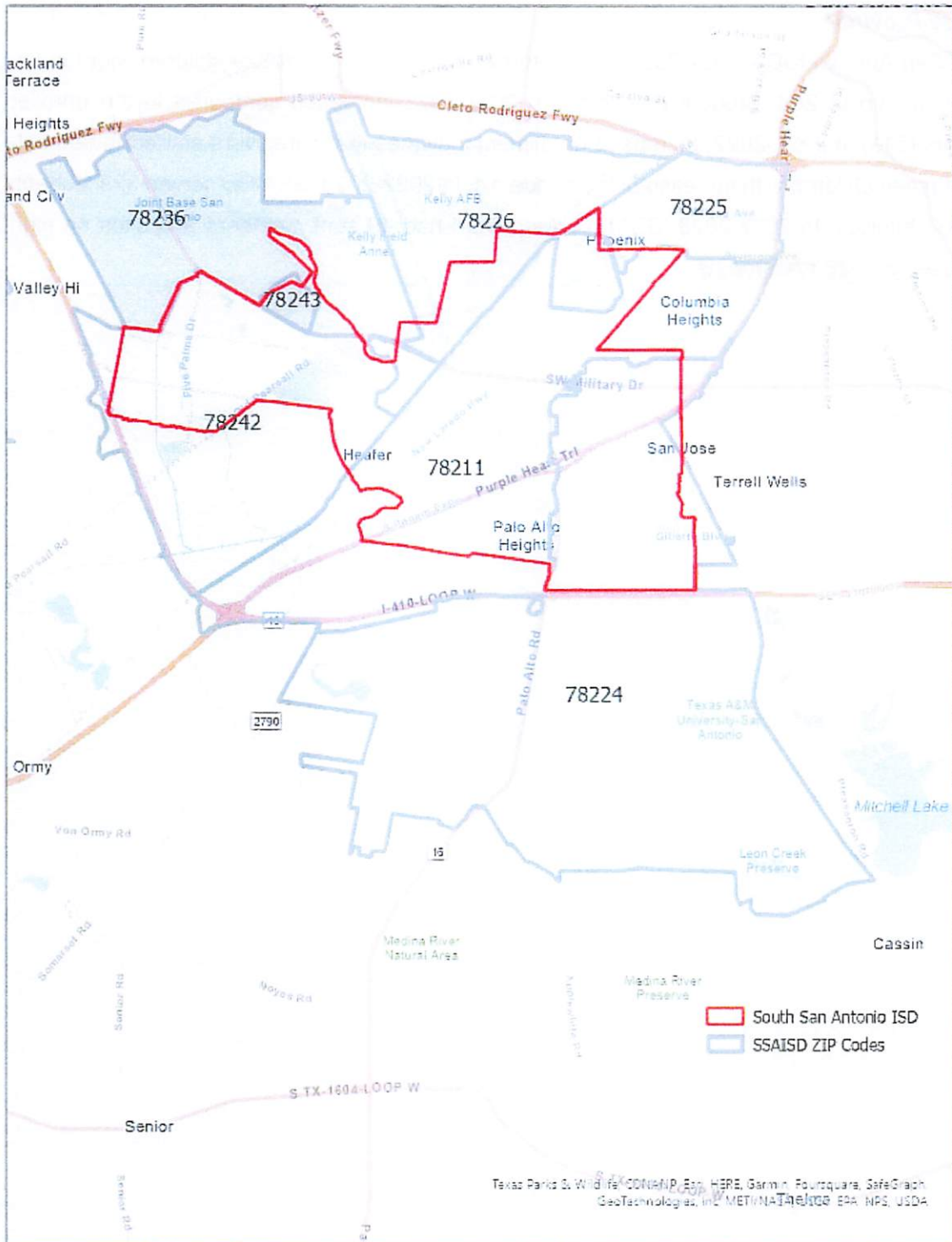


Figure 2-2 South San Antonio ISD Head Start Service Area by Zip Code

Service Provider

South San Antonio ISD's 2022-2023 Head Start enrollment stands at 329 children with funding support for up to 288. Student enrollment in 2022-2023 increased compared to the enrolled students (319) in 2021-2022. Increased enrollment indicates that caregivers started to feel safe sending their children with the ease of the pandemic. In 2022-2023, SSAISD served 329 students and 309 families. In 2022-2023, SSAISD Head Start had 49 staff members and sites on eight campuses with 16 classrooms.

3. Demographic Profile of Bexar County

Population Growth

According to the 2010 decennial census, Bexar County had a total population of just over 1.7 million (U.S. Census Bureau, 2010 Census). The population of the County grew by more than 294,551, or 17.2%, between 2010 and 2020. This growth rate was greater than that of the state of Texas (15.9%) or the United States (7.4%) alone (see Table 3-1). Bexar County has continued to grow through 2020 and is now estimated to have 2.03 million residents, about 312,050 more than were counted in 2010 (see Table 3-2).

Table 3-1 Bexar County Population Growth Comparison between Texas and the United States, 2010, 2020

| | 2010 | 2020 | Change | |
|---------------|-------------|-------------|------------|---------|
| | | | Numeric | Percent |
| Bexar County | 1,714,773 | 2,009,324 | 294,551 | 17.2% |
| Texas | 25,145,561 | 29,145,505 | 3,999,944 | 15.9% |
| United States | 308,745,538 | 331,449,281 | 22,703,743 | 7.4% |

Source: U.S. Census Bureau, 2010 and 2020 Census Counts

Table 3-2 Estimated Bexar County Components of Population Change between 2010 and 2020

| | 2010 Estimate* | 2020 Estimate** | Population Change** | Natural Increase** | Net Migration | | |
|--------------|----------------|-----------------|---------------------|--------------------|--------------------|---------------------|----------------------|
| | | | | | Total | Foreign Migration** | Domestic Migration** |
| Bexar County | 1,714,773 | 2,026,823 | 312,050 (100%) | 143,219 (46.0%) | 167,751 (54.0%) | 43,829 | 123,922 |

Source: *Decennial Census Count, US Census Bureau, 2010
 ** Census Bureau Population Estimates, 2020 Vintage

Note: This data reflects the estimated population change between April 1, 2010 to July 1, 2020. Components may not add to total as residual is not presented in this table.

The populations of South San Antonio ISD and other school districts are growing (see Table 3-3). Precise current estimates of the population, and forecasts of the population are not available for small areas because of time lags between data collection and analysis and the difficulty inherent in small area estimation and projections. Thus, a rough approximation of population size was calculated by extrapolating the expected population for 2023 with data from the 2018-2022 5-Year American Community Survey (ACS). These numbers suggest that the population of the South San Antonio ISD continue to grow through 2023. The ACS has sampling error associated with estimates and the estimate's accuracy of the estimate should be interpreted with that in mind.

Much of Bexar County's growth over the past decade can be attributed to natural increase¹ (see Table 3-2). In the past decade, 46% of the population increased due to natural change. This trend indicates that yearly births played a significant role in increasing Bexar County's population. Most of these births are concentrated in central and west Bexar County, and South San Antonio ISD had a significant number of births (see Figure 3-1). Table 3-4 shows the total births in the overlapped Zip Code areas (78211, 78224, 78225, 78226, 78236, 78242, 78243) with the South San Antonio Independent School District. The total number of births in South San Antonio ISD has slightly declined from 2016 to 2020. In 2020, the total number of births in the SSAISD ZIP code areas was 1,610. A similar decline was observed for Bexar County between 2016 and 2020. As a result, the percentage of births in SSAISD relative to Bexar County remained relatively stable throughout the time period.

¹ Natural increase is the number of births minus the number of deaths in an area over a specified period of time.

Table 3-3 Historic and Forecast Population in South San Antonio ISD and Select ISDs, 2012-2023

| Geography | 2012 | 2013 | 2014 | 2015 | 2016 | 2017 | 2018 | 2019 | 2020 | 2021 | 2022 | 2023 |
|---|---------|---------|---------|---------|---------|---------|---------|---------|---------|---------|---------|---------|
| South San Antonio ISD | 43,996 | 46,289 | 46,748 | 47,725 | 50,898 | 49,947 | 49,557 | 50,209 | 51,988 | 47,098 | 48,192 | 50,799 |
| Other Bexar County ISDs | | | | | | | | | | | | |
| East Central ISD | 46,382 | 46,342 | 47,275 | 48,066 | 47,707 | 49,645 | 52,094 | 53,361 | 55,325 | 60,146 | 64,339 | 61,924 |
| Edgewood ISD | 57,100 | 57,809 | 58,867 | 59,045 | 59,413 | 59,263 | 61,780 | 63,040 | 64,284 | 59,930 | 60,157 | 62,810 |
| Harlandale ISD | 62,080 | 62,370 | 64,015 | 63,599 | 64,704 | 65,689 | 65,610 | 67,551 | 68,416 | 61,681 | 60,674 | 64,884 |
| Northside ISD | 520,351 | 538,267 | 557,170 | 578,098 | 591,930 | 609,899 | 627,172 | 636,784 | 642,553 | 661,125 | 672,660 | 693,914 |
| San Antonio ISD | 305,223 | 308,152 | 308,431 | 312,802 | 320,249 | 324,377 | 323,048 | 328,316 | 332,198 | 304,696 | 303,738 | 320,142 |
| Southwest ISD | 54,631 | 55,706 | 56,415 | 54,930 | 54,977 | 57,776 | 60,720 | 62,647 | 63,191 | 69,032 | 69,233 | 69,086 |
| Source: U.S. Census Bureau, 5-Year American Community Survey, 2012, 2013, 2014, 2015, 2016, 2017, 2018, 2019, 2020, 2021, 2022, 2023 DP02 | | | | | | | | | | | | |
| * Linearly Extrapolated by using observed population trends between 2012 and 2023. | | | | | | | | | | | | |
| Note: Estimates from survey data have associated sampling error not presented in this table. | | | | | | | | | | | | |

Table 3-4 Number of Births for South San Antonio ISD 2016-2020

| School District | 2016 | 2017 | 2018 | 2019 | 2020 | Five-Year Average |
|--|--------|--------|--------|--------|--------|-------------------|
| South San Antonio ISD (Total Births in Overlapped ZIP Code areas with SSAISD) | 1,858 | 1,745 | 1,763 | 1,678 | 1,610 | 1,731 |
| Bexar County | 27,851 | 27,007 | 26,454 | 26,113 | 25,247 | 26,534 |
| % of SSAISD Births in Bexar | 6.7 | 6.5 | 6.7 | 6.4 | 6.4 | 6.5 |
| Source: Texas Vital Statistics (VSTAT), 2016-2020. | | | | | | |

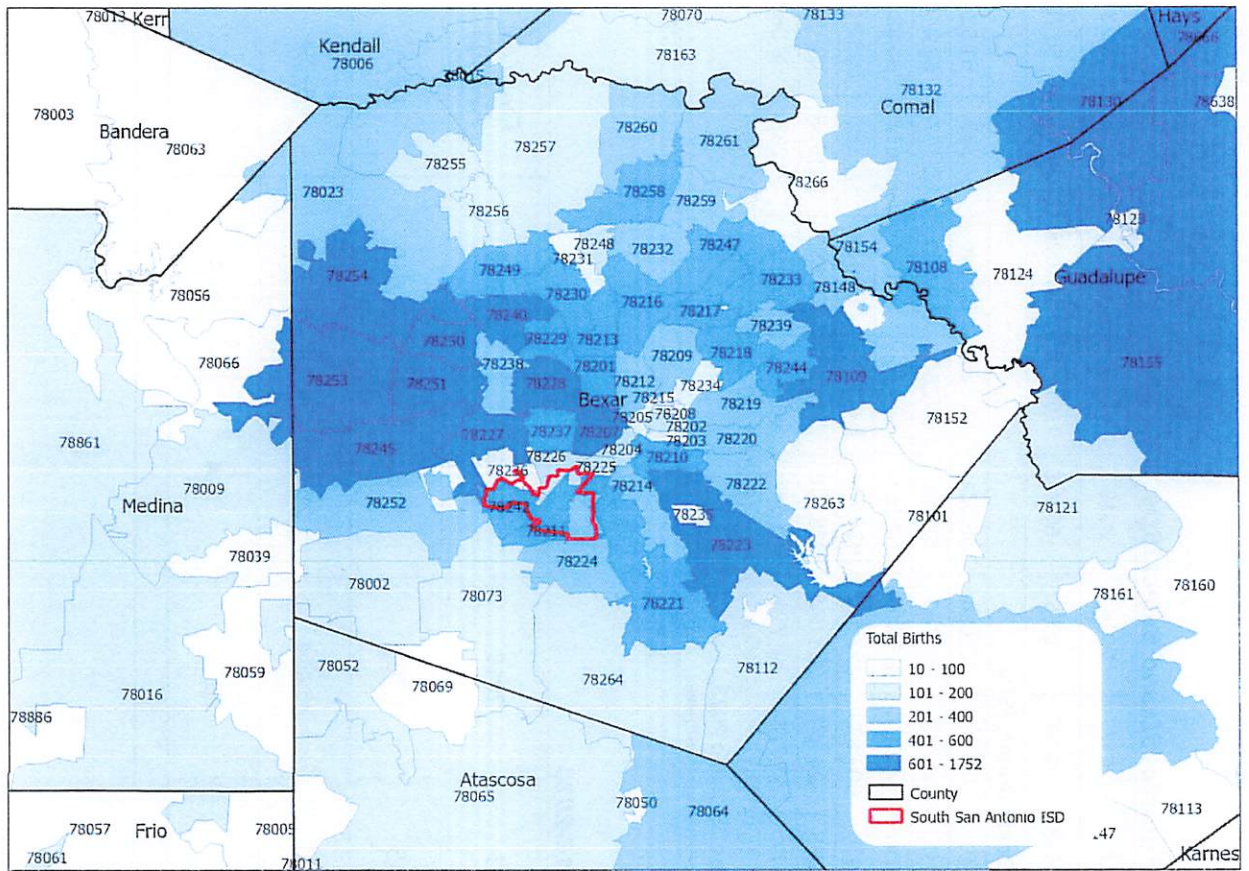


Figure 3-1 Births per ZIP Code in Bexar County, 2020

Source: Texas Vital Statistics (VSTAT), 2005-2020.

Table 3-5 Births Occurring by Mother's Characteristics, Selected Geographies, 2020

| Geography | Total Births | Percent births to mothers aged 15-19 years | Percent of births to single mothers | Percent of births to mothers with less than HS/GED | Percent of births with low or very low birth weight |
|---|--------------|--|-------------------------------------|--|---|
| Bexar County | 25,247 | 6.21% | 45.02% | 12.04% | 8.55% |
| Texas | 368,317 | 6.15% | 41.57% | 14.57% | 8.27% |
| All Zip Codes in SSAISD Service are | 1,610 | 11.99% | 61.93% | 22.83% | 9.25% |
| 78211 | 474 | 14.14% | 64.35% | 27.70% | 7.81% |
| 78224 | 283 | 10.60% | 61.48% | 15.66% | 8.48% |
| 78225 | 165 | 10.91% | 62.42% | 21.95% | 12.12% |
| 78226 | 109 | 11.01% | 75.23% | 28.44% | 6.42% |
| 78236 | 52 | 5.77% | 1.92% | 7.69% | 5.77% |
| 78242 | 527 | 11.95% | 63.00% | 22.90% | 11.01% |
| 78243 | 0 | 0.00% | 0.00% | 0.00% | 0.00% |
| Notes: The Zip Codes considered in this table are overlapped with SSAISD service boundary area. Source: Texas Vital Statistics (VSTAT),2005-2020 | | | | | |

As shown in Table 3-5, The percentage of births to teenage mothers in South San Antonio ISD is significantly higher than the percentage in Bexar County and the state of Texas. Specifically, the data shows that the percentage of births to teenage mothers in South San Antonio ISD is 12.0%, which is almost double the percentage in both Bexar County (6.2%) and the state (6.2%). This suggests that South San Antonio ISD may need to prioritize interventions and education programs aimed at reducing teenage pregnancy rates in the district.

Table 3-6 and 3-7 provide insights into the changes in the number of births in Bexar County and Texas over the past decade. Although Bexar County's population grew by 16.8% between 2010 and 2020, the number of births decreased by 3.2% between 2015 and 2020. In total, 79,493 births occurred in Bexar County during 2010-2020, with 25,000 in 2020. NH Black and NH Other race/ethnic groups saw an increase in their number of births, with NH Other experiencing the largest percent increase (53%), while NH Whites saw a decline (-9%). Hispanics and Whites accounted for the largest shares of births during the decade (65% and 23%, respectively). Table 3-7 shows that the birth trends in Texas were similar to those in Bexar County. Hispanics made up a larger share of births, while NH Other made up a smaller share of births. Notably, the share of NH White and Hispanic births decreased in both Bexar County and Texas, while the share of NH Black and NH Other births increased.

Table 3-6 Births Occurring in Bexar County, 2010-2020

| | Year | | | | | | | | | |
|-----------|---------|------------------|---------|------------------|---------|------------------|------------------|------------------|--------------------|---------|
| | 2010 | | 2015 | | 2020 | | 2010, 2015, 2020 | | Change (2010-2020) | |
| Race | Number* | Percent of total | Number* | Percent of total | Number* | Percent of total | Number* | Percent of total | Number* | Percent |
| White | 6,165 | 23.6 | 6,616 | 23.5 | 5,616 | 22.2 | 18,397 | 23.1 | -549 | -8.9 |
| Black | 1,674 | 6.4 | 1,816 | 6.4 | 1,836 | 7.3 | 5,326 | 6.7 | 162 | 9.7 |
| Hispanic | 17,309 | 66.4 | 18,167 | 64.5 | 16,382 | 64.9 | 51,858 | 65.2 | -927 | -5.4 |
| Other | 926 | 3.6 | 1573 | 5.6 | 1,413 | 5.6 | 3,912 | 4.9 | 487 | 52.6 |
| All Races | 26,074 | 100 | 28,172 | 100 | 25,247 | 100 | 79,493 | 100 | -827 | -3.2 |

Source: Texas Department of State Health Services, Custom Query with Birth Data, 2010, 2015 and 2020.
 * Mother's race considered as the child's race in determining the race specific birth numbers

Table 3-7 Births Occurring in Texas, 2010-2020

| | Year | | | | | | | | | |
|-----------|---------|------------------|---------|------------------|---------|------------------|-------------------|------------------|--------------------|---------|
| | 2010 | | 2015 | | 2020 | | 2010, 2015 & 2020 | | Change (2010-2020) | |
| Race | Number* | Percent of total | Number* | Percent of total | Number* | Percent of total | Number* | Percent of total | Number* | Percent |
| White | 133,431 | 34.6 | 136,663 | 33.9 | 118,242 | 32.1 | 388,336 | 33.5 | -15,189 | -11.4 |
| Black | 44,519 | 11.5 | 47,515 | 11.8 | 46,150 | 12.5 | 138,184 | 11.9 | 1,631 | 3.7 |
| Hispanic | 188,980 | 49.0 | 191,080 | 47.4 | 175,967 | 47.8 | 556,027 | 48.0 | -13,013 | -6.9 |
| Other | 18,816 | 4.9 | 28,181 | 7 | 27,958 | 7.6 | 74,955 | 6.5 | 9,142 | 48.6 |
| All Races | 385,746 | 100 | 403,439 | 100 | 368,317 | 100.0 | 1,157,502 | 100.0 | -17,429 | -4.5 |

Source: Texas Department of State Health Services, Custom Query with Birth Data, 2010, 2015 and 2020.
 * Mother's race considered as the child's race in determining the race specific birth numbers

Projected Population

Overall, trends indicate Bexar County has experienced an increase of its total population by 18% from 2010 to 2020 (Census Bureau Population Estimates, 2020 Vintage) and is expected to see an increase of 31% from 2010 to 2025. The total population is expected to grow² from 2.0 million in 2030 to 2.5 million in 2020 (Texas Demographic Center, County Population Projections, 2018). The Bexar County population resulting from the expected growth in the decades to come will be predominately Hispanic and younger in age, compared to the population of Bexar County in 2010. According to population estimates for Bexar County, the non-Hispanic white population made up 30% of the total population in 2010 (2010 Census). In 2020, this percentage has declined to 26.7% (2020 Census P.L. 94-171 Summary File), and by 2040 non-Hispanic whites are projected to comprise 23% of all Bexar County residents (Texas Demographic Center, 2018). Meanwhile, the County's share of minorities, especially Hispanics, will increase dramatically in the same time period (see Figure 3-2).

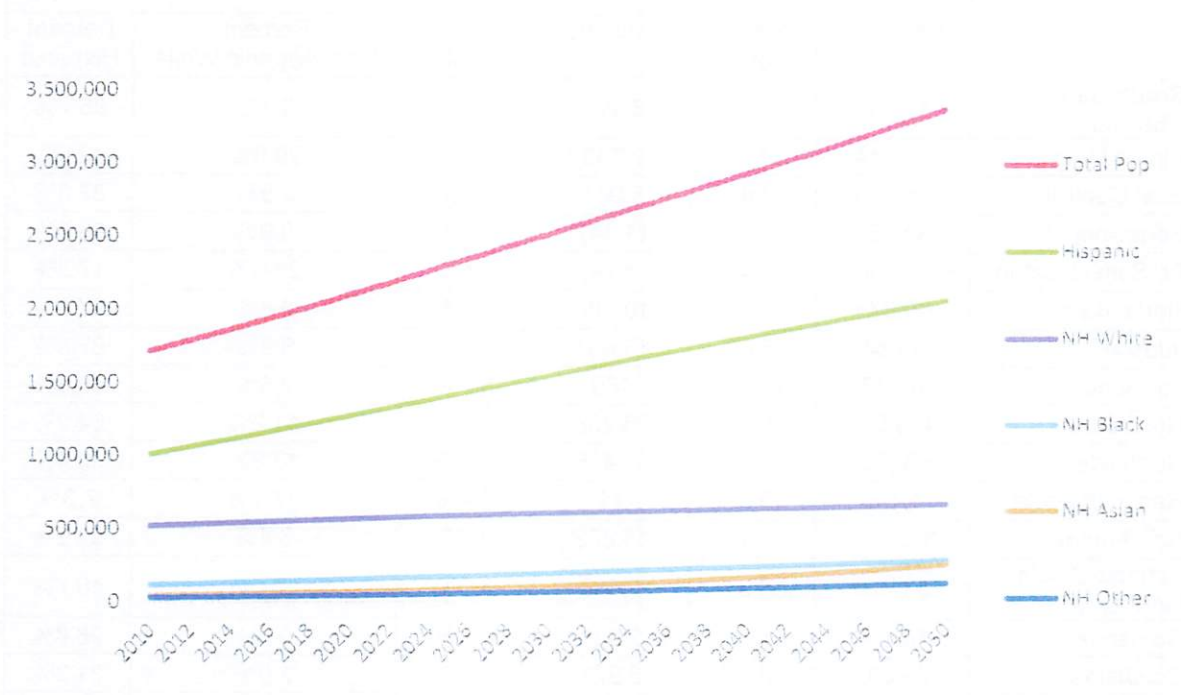


Figure 3-2 Bexar County Projected Growth by Race and Ethnicity, 2010-2050

Source: Texas Demographic Center Population Projections, 2018

² This projection assumes the Migration Scenario between 2010 and 2015, which is the recommended choice for Bexar County (Texas Demographic Center, 2018). The scenario uses migration rates calculated from population trends occurring after 2010 and assumes demographic changes happen more quickly than those trends.

Immigrants

During 2018-2022, foreign born residents made up 13.1% of Bexar County's population and 17.1% of the State's population (see Table 3-8). South San Antonio ISD (17.0%) was estimated to have some of the greatest shares of foreign born among all ISDs in Bexar County. In contrast, Lackland ISD (5.2%) and Randolph Field ISD (3.4%) had the lowest proportion of foreign-born residents. The percentage of Hispanic foreign-born residents among all foreign-born residents ranged from a low (7.3%) in Randolph Field ISD to a high (98.8%) in Somerset ISD. The total foreign-born population of South San Antonio ISD is almost (96.7%) entirely Hispanic, which is significantly higher than it is in the County (71.0%) and in the State (63.8%).

Table 3-8 Bexar County Foreign Born Population Comparisons for South San Antonio ISD and Selected Districts, 2018-2022

| | Total Population | | Foreign Born Population | | | |
|---------------------------|------------------|------------------|-------------------------|------------------|----------------------------|------------------|
| | Estimate | Percent Hispanic | Estimate | Percent of Total | Percent Non-Hispanic White | Percent Hispanic |
| South San Antonio | 48,192 | 90.5% | 8,193 | 17.0% | 0.7% | 96.7% |
| Alamo Heights | 30,944 | 29.8% | 2,799 | 9.0% | 29.0% | 42.9% |
| East Central | 64,339 | 60.4% | 5,961 | 9.3% | 3.9% | 87.3% |
| Edgewood | 60,157 | 94.4% | 11,147 | 18.5% | 0.9% | 98.5% |
| Ft. Sam Houston | 5,534 | 18.4% | 519 | 9.4% | 21.6% | 17.3% |
| Harlandale | 60,674 | 90.1% | 10,108 | 16.7% | 0.8% | 97.8% |
| Judson | 143,844 | 46.0% | 16,685 | 11.6% | 8.2% | 67.8% |
| Lackland | 8,927 | 15.3% | 460 | 5.2% | 9.6% | 30.9% |
| North East | 428,501 | 48.2% | 56,258 | 13.1% | 11.2% | 64.2% |
| Northside | 672,660 | 58.2% | 83,436 | 12.4% | 13.8% | 53.4% |
| Randolph Field | 1,195 | 19.8% | 41 | 3.4% | 17.1% | 7.3% |
| San Antonio | 303,738 | 79.1% | 45,832 | 15.1% | 3.4% | 92.2% |
| Schertz-Cibolo-Univ. City | 83,778 | 33.9% | 5,438 | 6.5% | 14.0% | 48.7% |
| Somerset | 18,166 | 85.8% | 2,008 | 11.1% | 0.8% | 98.8% |
| Southside | 29,568 | 82.8% | 3,977 | 13.5% | 2.6% | 91.2% |
| Southwest | 69,233 | 78.1% | 9,605 | 13.9% | 1.6% | 91.5% |
| Bexar County | 2,014,059 | 61.0% | 263,827 | 13.1% | 9.0% | 71.0% |
| Texas | 29,243,342 | 39.9% | 4,987,855 | 17.1% | 8.4% | 63.8% |

Note: Estimates from survey data have associated sampling error not presented in this table.
Source: U.S. Census Bureau, 2022 5 Year American Community Survey, DP02, DP05 and Derived from B05003H & B05003I.

Race and Ethnicity

A larger share of Bexar County residents are members of minority groups in comparison to the State and Nation (see Table 3-9), as well as most other counties (see Tables 3-10 and 3-11). Overall, minorities made up more than two-thirds of Bexar County's population. Non-Hispanic Whites comprise only 26.1% of the area's population, while 61% of the Bexar County population was Hispanic.

The populations of the South San Antonio ISD area were made up of an even larger share of minorities than the County, State, and Nation (see Table 3-9 and 3-12). Minorities comprised almost 93.6% of the population in South San Antonio ISD.

Table 3-9 Racial and Ethnic Composition Comparison Bexar County, Texas, and the United States, 2018-2022

| | Bexar County | | Texas | | United States | |
|---|--------------|---------|------------|---------|---------------|---------|
| | Total | Percent | Total | Percent | Total | Percent |
| Total | 2,014,059 | 100 | 29,243,342 | 100 | 331,097,593 | 100 |
| Hispanic (any race) | 1,229,072 | 61.0 | 11,665,280 | 39.9 | 61,755,866 | 18.7 |
| White (non-Hispanic) | 525,772 | 26.10 | 11,732,834 | 40.1 | 194,886,464 | 58.9 |
| Black (non-Hispanic) | 141,156 | 7.00 | 3,449,557 | 11.8% | 40,146,392 | 12.1 |
| Asian (non-Hispanic) | 59,390 | 2.90 | 1,487,200 | 5.1% | 18,873,442 | 5.7 |
| Other (non-Hispanic) | 58,669 | 2.80 | 908,471 | 3.1% | 15,435,429 | 4.7 |
| <small>Note: Estimates from survey data have associated sampling error not presented in this table. Source: U.S. Census Bureau, 2022 5 Year American Community Survey, DP05 & Derived from DP05.</small> | | | | | | |

Table 3-10 Racial and Ethnic Composition Comparison for Bexar, Collin, Dallas, Denton, and El Paso Counties, 2018-2022

| | Bexar | | Collin | | Dallas | | Denton | | El Paso | |
|----------|-----------|------|-----------|------|-----------|------|---------|------|---------|------|
| | Total | % | Total | % | Total | % | Total | % | Total | % |
| Total | 2,014,059 | 100 | 1,079,153 | 100 | 2,604,053 | 100 | 914,870 | 100 | 863,832 | 100 |
| Hispanic | 1,229,072 | 61.0 | 168,844 | 15.6 | 1,066,429 | 41.0 | 180,694 | 19.8 | 716,538 | 82.9 |
| NH White | 525,772 | 26.1 | 568,410 | 52.7 | 713,636 | 27.4 | 508,342 | 55.6 | 96,994 | 11.2 |
| NH Black | 141,156 | 7.0 | 111,174 | 10.3 | 577,868 | 22.2 | 93,656 | 10.2 | 24,578 | 2.8 |
| NH Asian | 59,390 | 2.9 | 182,173 | 16.9 | 173,014 | 6.6 | 89,811 | 9.8 | 9,597 | 1.1 |
| NH Other | 58,669 | 2.8 | 48,552 | 4.5 | 73,106 | 2.8 | 42,367 | 4.7 | 16,125 | 1.9 |

Note: Estimates from survey data have associated sampling error not presented in this table.
Source: U.S. Census Bureau, 2018-2022 5 Year American Community Survey, DP05 & derived from DP05.

Table 3-11 Racial and Ethnic Composition Comparison for Fort Bend, Harris, Hidalgo, Tarrant, and Travis Counties, 2018-2022

| | Fort Bend | | Harris | | Hidalgo | | Tarrant | | Travis | |
|----------|-----------|------|-----------|------|---------|------|-----------|------|-----------|------|
| | Total | % | Total | % | Total | % | Total | % | Total | % |
| Total | 832,607 | 100 | 4,726,177 | 100 | 873,167 | 100 | 2,113,854 | 100 | 1,289,054 | 100 |
| Hispanic | 209,110 | 25.1 | 2,076,103 | 43.9 | 807,715 | 92.5 | 630,175 | 29.8 | 429,581 | 33.3 |
| NH White | 251,890 | 30.3 | 1,306,481 | 27.6 | 49,568 | 5.7 | 927,508 | 43.9 | 614,956 | 47.7 |
| NH Black | 166,340 | 20.0 | 872,237 | 18.5 | 4,034 | 0.5 | 357,665 | 16.9 | 102,001 | 7.9 |
| NH Asian | 175,751 | 21.1 | 330,740 | 7.0 | 8,036 | 0.9 | 120,991 | 5.7 | 91,043 | 7.1 |
| NH Other | 29,516 | 3.5 | 140,616 | 3.0 | 3,814 | 0.4 | 77,515 | 3.7 | 51,473 | 4.0 |

Note: Estimates from survey data have associated sampling error not presented in this table.
Source: U.S. Census Bureau, 2018-2022 5 Year American Community Survey, DP05 & derived from DP05.

Table 3-12 Racial and Ethnic Composition Comparison for South San Antonio ISD, 2018-2022

| | South San Antonio ISD | |
|---|-----------------------|---------|
| | Total | Percent |
| Total | 48,192 | 100% |
| Hispanic (any race) | 43,611 | 90.5% |
| White (non-Hispanic) | 3,081 | 6.4% |
| Black (non-Hispanic) | 793 | 1.6% |
| Asian (non-Hispanic) | 224 | 0.5% |
| Other (non-Hispanic) | 483 | 1.0% |
| <small>Note: Estimates from survey data have associated sampling error not presented in this table. Source: U.S. Census Bureau, 2018-2022 American Community Survey, DP05 & derived from DP05.</small> | | |

The neighborhoods that are most heavily populated by minorities are concentrated within the Interstate 410 Loop area and in the southern part of the County (see Figure 3-3). There is substantial overlap between these neighborhoods and those that are predominantly comprised of Hispanics. Most neighborhoods with a high proportion of Hispanic population are also concentrated in central San Antonio and extend southwest (see Figure 3-4). In contrast, neighborhoods with higher proportions of non-Hispanic Black population are clustered in the eastern and western portions of the county (see Figure 3-5). All neighborhoods with substantial shares of minority populations are among of the most densely populated and oldest neighborhoods in San Antonio; these areas make up the urban core of the County and the City of San Antonio. South San Antonio ISD boundaries encompass the southwestern part of San Antonio, where higher proportions of Hispanic population are concentrated.

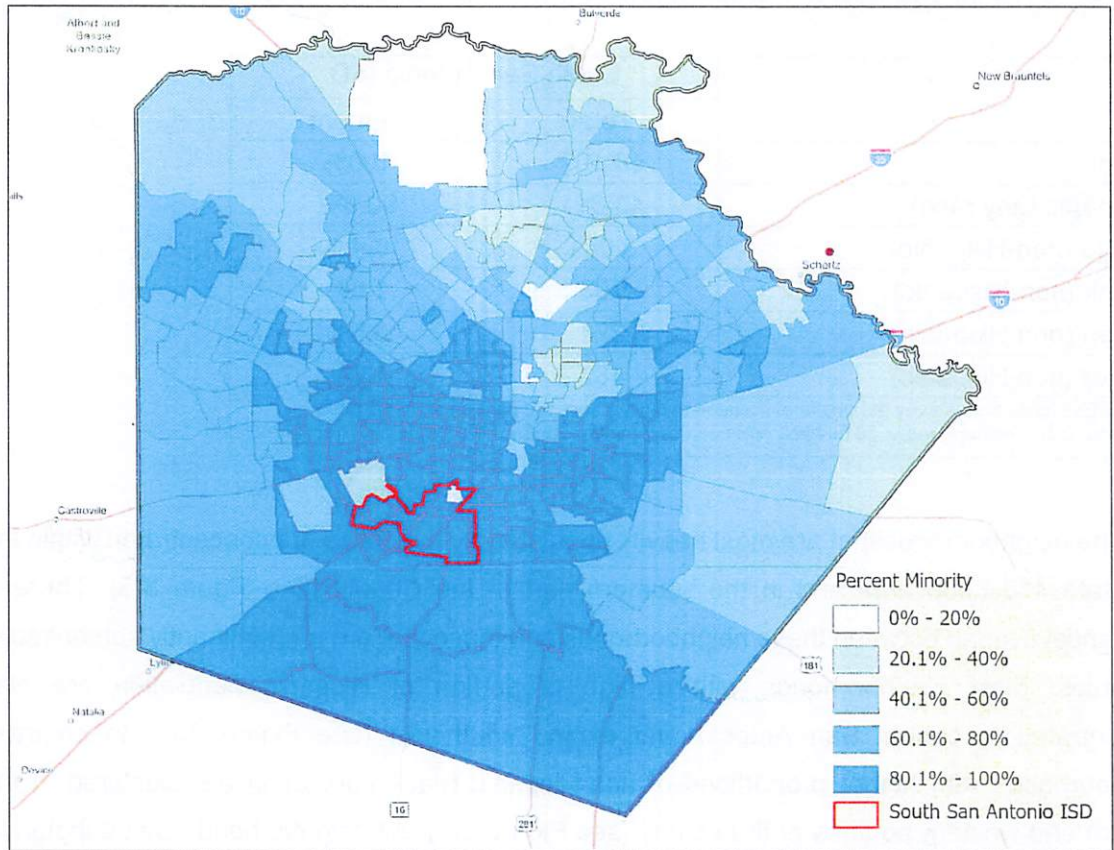


Figure 3-3 Percent of the Population that is Minority Race/Ethnicity by Census Tract, 2018-2022

Source: American Community Survey, Five-year Sample, 2018-2022. DP05

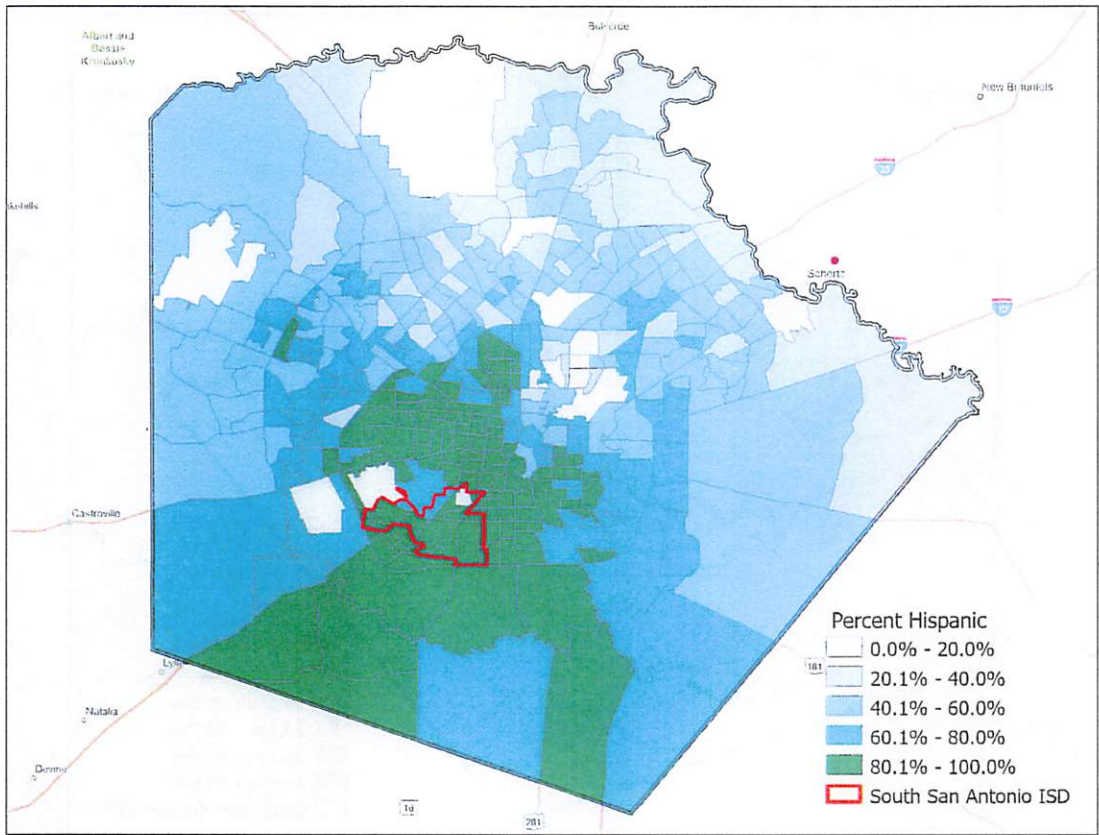


Figure 3-4 Percent of the Population that is Hispanic by Census Tract, Bexar County, 2018-2022

Source: American Community Survey, Five-year Sample, 2018-2022, DP05.

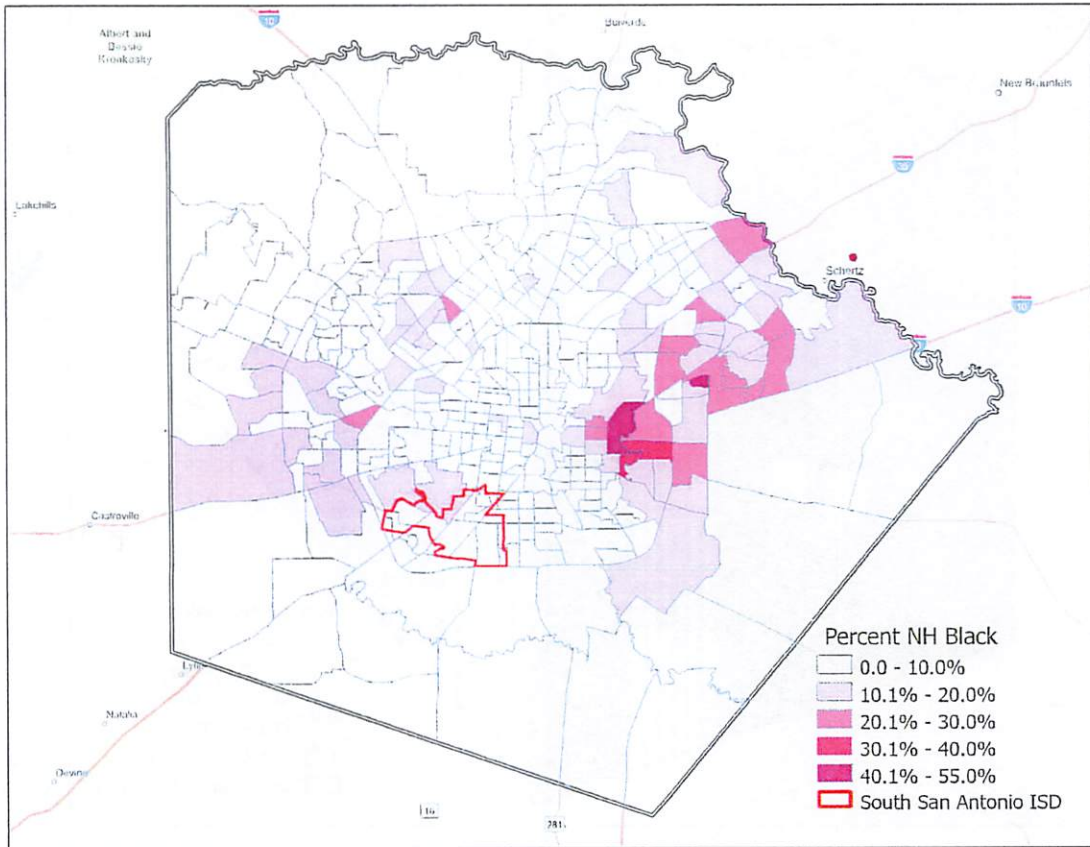


Figure 3-5 Percent of Population that is Non-Hispanic Black by Census Tract, Bexar County, 2018-2022

Source: American Community Survey, Five-year Sample, 2018-2022, DP05.

Languages

Spanish is the most widely used non-English language in Bexar County, which is consistent with the demographic composition of the area (see Table 3-13). An estimated 714,764 Bexar County residents (38%) spoke a foreign language at home, from which approximately 11.4% could not speak English “very well.” An estimated 34% of residents spoke Spanish at home, most were concentrated in central and southern parts of the County (see Figure 3-6). The remaining balance of foreign language speakers ranged from a number of different origins. Other than Spanish, Chinese, Vietnamese, Korean, and Japanese made up roughly half the balance of foreign languages spoken.

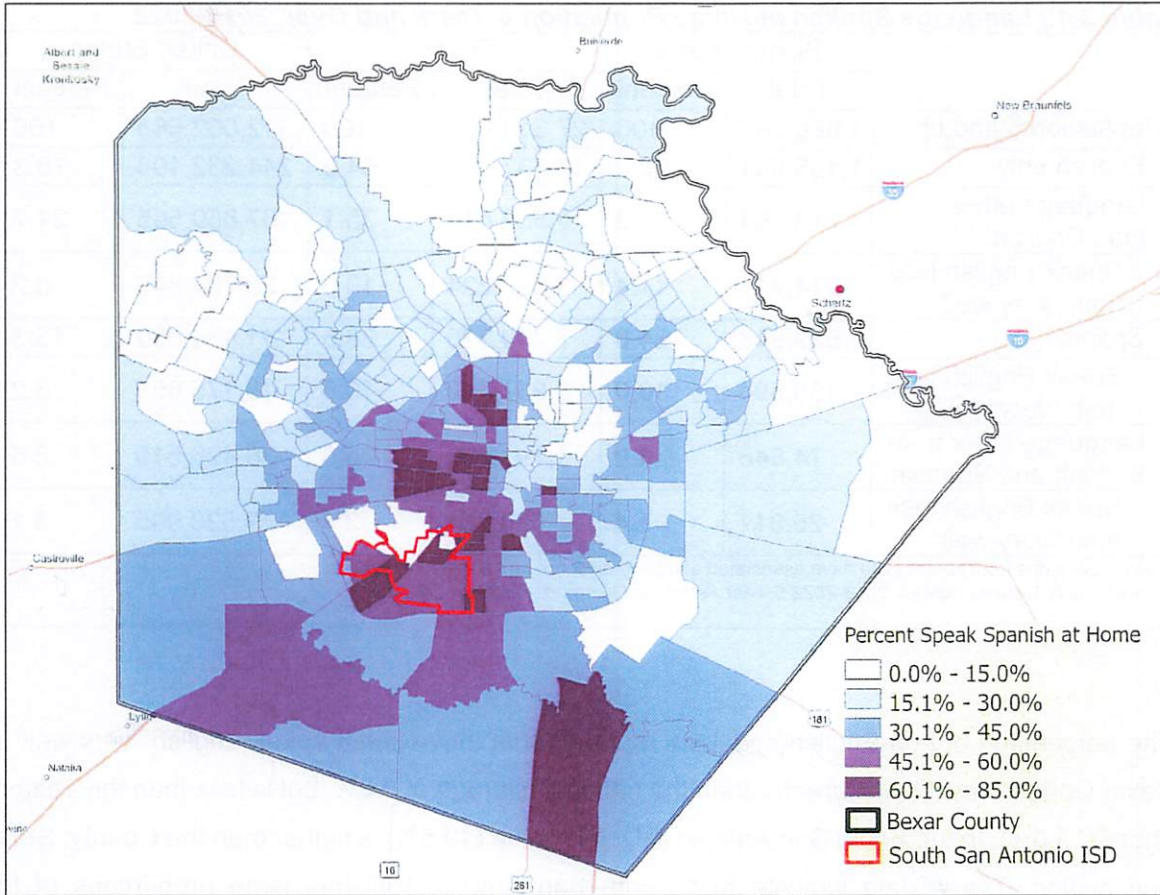


Figure 3-6 Percent of Persons Aged 5 Years and Older that Speak Spanish at Home by Census Tract, Bexar County, 2018-2022

Source: American Community Survey, 5 Year Sample, 2018-2022, DP02.

Greater shares of South San Antonio ISD residents spoke Spanish (56.6%) when compared to the County (34%), State (28.5%) or Nation (13.3%) (see Table 3-13 & 3-14). Additionally, the share of South San Antonio ISD Spanish speakers who spoke English “less than very well (19.5%) is higher than the share in Bexar County (11.4%). Comparatively few individuals in the Souths San Antonio ISD spoke a language other than English or Spanish (0.7%), compared to the County (4%), State (6.6%), or Nation (8.5%).

Table 3-13 Language Spoken at Home Population 5 Years and Over, 2018-2022

| | Bexar County | | Texas | | United States | |
|--|--------------|---------|------------|---------|---------------|---------|
| | Total | Percent | Total | Percent | Total | Percent |
| Population 5 and up | 1,880,365 | 100 | 27,319,920 | 100 | 312,092,668 | 100 |
| English only | 1,165,601 | 62.0 | 17,737,503 | 64.9 | 244,232,103 | 78.3 |
| Language other than English | 714,764 | 38.0 | 9,582,417 | 35.1 | 67,860,565 | 21.7 |
| Speak English less than "very well" | 214,711 | 11.4 | 3,538,224 | 13.0 | 25,704,846 | 8.2 |
| Spanish | 639,918 | 34.0 | 7,790,925 | 28.5 | 41,434,050 | 13.3 |
| Speak English less than "very well" | 188,894 | 10.0 | 2,957,440 | 10.8 | 16,175,851 | 5.2 |
| Language other than English and Spanish | 74,846 | 4.0 | 1,791,492 | 6.6 | 26,426,515 | 8.5 |
| Speak English less than "very well" | 25,817 | 1.4 | 580,784 | 2.1 | 9,528,995 | 3.1 |
| <small>Note: Estimates from survey data have associated sampling error not presented in this table. Source: U.S. Census Bureau, 2018-2022 5 Year American Community Survey, DP02.</small> | | | | | | |

The percentage of non-English speakers reporting that they cannot speak English "very well" in Bexar County was 11.4%, greater than the national average of 8.2%, but is less than the Texas's share (13.0%). In the South San Antonio ISD, this value (19.5%) is higher than the County, State, and Nation. These data indicate that South San Antonio ISD has large proportions of the population that require Spanish or non-English language services.

Table 3-14 Language Spoken at Home Population 5 Years and Over South San Antonio ISD, 2018-2022

| | South San Antonio ISD | |
|---|-----------------------|---------|
| | Total | Percent |
| Population 5 and up | 44,447 | 100 |
| English only | 19,014 | 42.8% |
| Language other than English | 25,433 | 57.2% |
| Speak English less than "very well" | 8,647 | 19.5% |
| Spanish | 25,135 | 56.6% |
| Speak English less than "very well" | 8,600 | 19.3% |
| Language other than English and Spanish | 296 | 0.7% |
| Speak English less than "very well" | 47 | 0.1% |

Note: Estimates from survey data have associated sampling error not presented in this table.
Source: U.S. Census Bureau, 2018-2022 American Community Survey, DP02 and derived from DP02.

Spanish language services are more needed in areas with high bilingual instruction. Overall, the South San Antonio ISD appears to have a higher percentage of bilingual and ESL enrollees than most other school districts in the area (see Figure 3-7). As South San Antonio ISD is largely made up of Hispanic neighborhoods, it is assumed that the families of bilingual students are mostly Spanish speakers. Thus, residents in South San Antonio ISD may need more Spanish services.

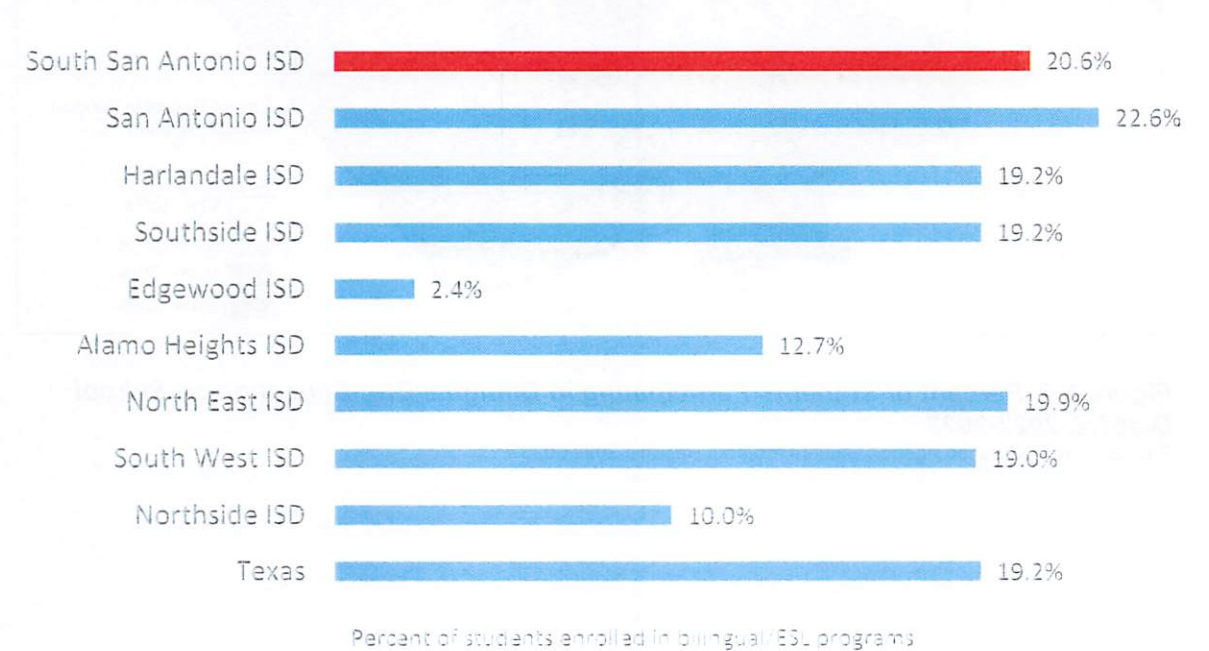


Figure 3-7 Percent Bilingual/ESL Enrollment, by School District, 2022-2023
Source: Texas Education Agency, Student Program Reports, 2022-2023.

The density of students enrolled in bilingual or English as a Second Language (ESL) education is highest in the county center and extends southward and northward (see Figure 3-8). South San Antonio ISD was among the independent school districts with a higher proportion of students participating in these programs.

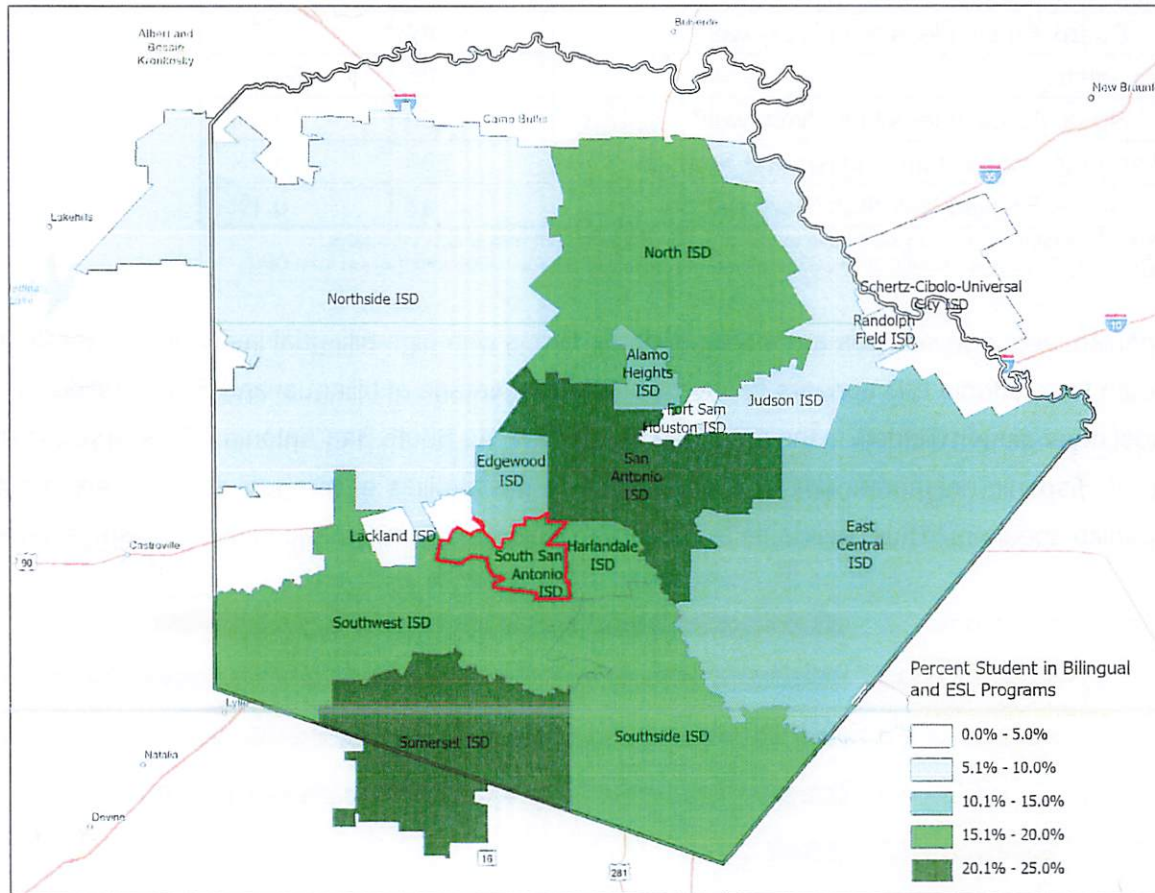


Figure 3-8 Percent of Students Participating in Bilingual/ESL Education by School District, 2022-2023

Source: Texas Education Agency, Student Program Reports, 2022-2023.

The number of dual language learner classes needed was estimated with data from the Texas Education Agency (see Tables 3-15 and 3-16). The percentage of students enrolled in Bilingual and ESL programs was calculated by dividing the percentage of students enrolled in these programs by the total number of enrolled students. This percentage was then applied to the number of children currently enrolled in South San Antonio ISD HS Programs. The resulting value is the estimated number of children enrolled in the HS Program that may need dual language services. This number may be overestimated because younger children are less likely to enroll in Bilingual and ESL classes than older children.

Table 3-16 uses the estimate of bilingual children enrolled in HS to calculate the needed number of bilingual classes. The ideal student-to-teacher ratio for children 3-4 years ranges between 1:6 and 1:10 (National Association for the Education of Young Children, 2008). However, in mixed age groups (2 ½ years old to 5-years old), a ratio of no more than 1:4 teachers to students is recommended. Additionally, the National Association for the Education of Young Children (NAEYC) recommends a smaller ratio where one or more children may need additional assistance due to factors such as language fluency and ability. This update uses the student-to-teacher ratio of 1:8 for HS-aged children. These calculations estimate that 9 bilingual classes may be needed for HS in South San Antonio ISD. Again, these calculations are likely to be overestimated because of the greater use of Bilingual/ESL services at older ages.

The estimates of bilingual learners and needed bilingual classes are subject to some caveats. As previously mentioned, these calculations may overestimate the population of bilingual learners. It is also possible that enrollment may not reflect the population of age-and-income-eligible bilingual learners in the program. South San Antonio ISD may be better able to enroll English speakers than bilingual children; thus, the enrolled population may be less likely to be bilingual than the general population. Finally, and perhaps most likely, the estimates may reflect a combination of these issues. The calculations could reflect an overestimation of the population of bilingual children, and the difficulty of recruiting bilingual learners may make the enrolled population less likely to be bilingual. For these reasons, please be aware that there may be a mismatch between our estimates and the number of needed bilingual learner classrooms.

Table 3-15 Estimated Number of Bilingual Learners, South San Antonio ISD, 2022

| District | Enrolled Students 2022-2023* | Students Enrolled in Bilingual/ESL Programs 2022-2023* | Percent of Population that is Enrolled in Bilingual/ESL Programs | Children Enrolled in HS, 3-4 Years, 2022-2023** | Estimated Number of 3 to 4 Year Old Children Needing Language Services |
|---|------------------------------|--|--|---|--|
| South San Antonio ISD | 7,872 | 1623 | 20.6% | 329 | 68 |
| Source: *Texas Education Agency, Student Program Reports, 2022-2023. ** Office of Head Start, Head Start Enterprise System, Program Information Report, 2022 Note: Estimated Number of Children is calculated by multiplying the exact, unrounded percentage of children enrolled in Bilingual/ESL programs with the number of children enrolled in SSAISD's HS Programs. | | | | | |

Table 3-16 Estimated Number of Bilingual Classes Needed, South San Antonio ISD, 2022

| District | Estimated Number of 3 to 4 Year Old Children Needing Language Services* | Ideal Student-to-Teacher Ratio** | Estimated Number of Bilingual Classes Needed |
|--|---|----------------------------------|--|
| South San Antonio ISD | 68 | 1-to-8 | 9 |
| * Estimated numbers from Table 3-15 ** National Association for the Education of Young Children, 2008 | | | |

Household Structure

In 2022, Bexar County was the fourth most populous county in Texas (behinds Harris, Dallas, and Tarrant counties) and had a total population of 2.05 million people (Census Population Estimates Vintage 2022). Most of the County’s residents live in City of San Antonio (1.47 million), which contained an estimated 71.5% of the County’s 2022 population. The County’s age structure is young, with a median county age younger than Texas and U.S. (see Table 3-17).

Table 3-18 indicates the population age structure of the South San Antonio ISD is young. The median age of the SSAISD (31.8 years) is younger when compared to County (34.2 years), State (35.2 years) and Nation (38.5 years).

Larger shares (7.8%) of the SSAISD are comprised of children under 5 years, compared to the other geographies (see Tables 3-19 and 3-20). The percent of households that are families is larger (79.4%) in SSAISD compared to the County (71.7%), State (74.3%), and Nation (71.7%). The share of single parent families in the SSAISD (12.9%) is larger than the share in the County (11.7%), State (9.9%), and Nation (8.7%). Similarly, the average family size in the SSAISD (3.68) is larger than the County (3.4), State (3.30), and Nation (3.2).

Table 3-17 U.S., Texas, and Bexar County Population by Age, 2018-2022

| | Bexar County | | Texas | | United States | |
|--------------------|--------------|---------|------------|---------|---------------|---------|
| | Total | Percent | Total | Percent | Total | Percent |
| Total | 2,014,059 | 100 | 29,243,342 | 100 | 331,097,593 | 100 |
| Under 5 years | 133,694 | 6.6 | 1,923,422 | 6.6 | 19,004,925 | 5.7 |
| 18 years and older | 1,508,994 | 74.9 | 21,847,214 | 74.7 | 257,883,888 | 77.9 |
| Median age | 34.2 | - | 35.2 | - | 38.5 | - |

Note: Estimates from survey data have associated sampling error not presented in this table.
Source: U.S. Census Bureau, 2018-2022 5 Year American Community Survey, DP05.

Table 3-18 South San Antonio ISD Populations by Age, 2018-2022

| | South San Antonio ISD | |
|--|-----------------------|---------|
| | Total | Percent |
| Total | 48,192 | 100 |
| Under 5 years | 3,745 | 7.8 |
| 18 years and older | 34,132 | 70.8 |
| Median age | 31.8 | |
| Note: Estimates from survey data have associated sampling error not presented in this table. Source: U.S. Census Bureau, 2018-2022 American Community Survey, DP05. | | |

Table 3-19 South San Antonio ISD Demographic and Household Characteristics, 2018-2022

| | South San Antonio ISD | |
|--|-----------------------|---------|
| | Total | Percent |
| Total Population | 48,192 | 100 |
| Population under 5 | 3,745 | 7.8 |
| Total households | 14,890 | 100 |
| Total Families | 11,830 | 79.4 |
| Single Parent Families | 1,928 | 12.9 |
| Average family size | 3.68 | |
| Note: Estimates from survey data have associated sampling error not presented in this table. Source: U.S. Census Bureau, 2018-2022 American Community Survey, DP02 and derived from DP02. | | |

Table 3-20 Bexar County, Texas and United States Demographic and Household Characteristics, 2018-2022

| | Bexar County | | Texas | | United States | |
|--|--------------|---------|------------|---------|---------------|---------|
| | Total | Percent | Total | Percent | Total | Percent |
| Total Population | 2,014,059 | 100 | 29,243,342 | 100 | 331,097,593 | 100 |
| Population under 5 | 133,694 | 6.6 | 1,923,422 | 6.6 | 19,004,925 | 5.7 |
| Total households | 730,119 | 100 | 10,490,553 | 100 | 125,736,353 | 100 |
| Total Families | 523,202 | 71.7 | 7,797,240 | 74.3 | 90,186,121 | 71.7 |
| Single Parent Families | 61,259 | 11.7 | 772,476 | 9.9 | 7,847,858 | 8.7 |
| Average family size | 3.4 | | 3.3 | | 3.2 | |
| Note: Estimates from survey data have associated sampling error not presented in this table. Source: U.S. Census Bureau, 2018-2022 5 Year American Community Survey, DP02, DP05, and derived from DP02. | | | | | | |

Foster Children

Foster children do not comprise a substantial portion of Bexar County's residents. The number of children in foster care, and the rate of children in foster care per 1,000 children, has remained stable in Bexar County and in Texas over the past 5 years (see Table 3-21). According to data from the 2022 ACS 5-year estimates and the Texas Department of Family and Protective Services, there were an estimated 1,690 foster children estimated to live in Bexar County. Of these there were approximately 54 in South San Antonio ISD, 70 resided in East Central ISD, 66 children in Edgewood ISD, 61 children in Harlandale ISD, 650 in Northside ISD, 270 in San Antonio ISD, and 78 children lived in Southwest ISD (see Tables 3-22 and 3-23). However, these numbers reflect all foster children 0-17 years and do not reflect of those that are age-eligible for Head Start Program.

Table 3-21 Yearly Average of Children in Paid Foster Care (0-17 Years), Bexar County, 2018-2022

| Metric | 2020 | | 2021 | | 2022 | | 5-Year Average (2018-2022) | |
|---|--------------|-----------|--------------|-----------|--------------|-----------|----------------------------|-----------|
| | Bexar County | Texas | Bexar County | Texas | Bexar County | Texas | Bexar County | Texas |
| Number of Children in Foster Care (0-17 Years)* | 2,073 | 18,217 | 2,039 | 17,566 | 1,690 | 14,612 | 1,975 | 17,272 |
| Number of Children** | 506,504 | 7,404,718 | 506,086 | 7,401,228 | 503,610 | 7,456,069 | 511,845 | 7,413,944 |
| Rate per 1,000 children aged 0-17 | 4.1 | 2.5 | 4.0 | 2.4 | 3.4 | 2.0 | 3.9 | 2.3 |

Note: The number and rate per 1,000 of children, ages 0-17, in foster care.
Source: *Texas Department of Family and Protective Services.
** Census Bureau Population Estimate – 2022 Vintage.

Footnotes: The term foster care refers to care given to children under the Texas Department of Family and Protective Services' (DFPS) legal responsibility who are placed in foster homes, foster group homes, institutions, residential treatment facilities, juvenile facilities, and who are in a placement paid by DFPS or some other public facility.

Table 3-22 Number of Children Under 18 Years by Relationship to Head of Household, Selected School Districts, 2018-2022

| School District | South San Antonio | East Central | Edgewood | Harlandale | Northside | San Antonio | Southwest |
|---------------------------------------|-------------------|--------------|----------|------------|-----------|-------------|-----------|
| Total | 14,028 | 18,287 | 17,106 | 15,823 | 168,852 | 70,261 | 20,378 |
| Own child | 10,984 | 15,820 | 11,980 | 12,392 | 147,090 | 54,021 | 15,626 |
| Biological child | 10,147 | 14,479 | 11,574 | 11,640 | 137,013 | 50,869 | 14,338 |
| Adopted child | 123 | 742 | 164 | 70 | 4,408 | 1,411 | 489 |
| Stepchild | 714 | 599 | 242 | 682 | 5,669 | 1,741 | 799 |
| Grandchild | 2,292 | 1,791 | 3,983 | 2,833 | 14,142 | 12,546 | 3,232 |
| Other relatives | 618 | 251 | 918 | 458 | 4,122 | 2,293 | 710 |
| Foster child or other unrelated child | 134 | 425 | 225 | 140 | 3,498 | 1,401 | 1,173 |
| Estimated number of Foster Children* | 54 | 70 | 66 | 61 | 650 | 270 | 78 |

Note: Estimates from survey data have associated sampling error not presented in this table.
Source: U.S. Census Bureau, 2018-2022 5 Year American Community Survey, B09018.
*Texas Department of Family and Protective Services, 2022

Table 3-23 Number of Children Under 18 Years by Relationship to Head of Household, Selected Geographies, 2018-2022

| Geography | Bexar County | Texas | United States** |
|---------------------------------------|--------------|-----------|-----------------|
| Total | 503,684 | 7,428,662 | 73,025,646 |
| Own child | 425,365 | 6,473,025 | 64,085,302 |
| Biological child | 396,178 | 6,064,812 | 60,292,718 |
| Adopted child | 10,681 | 136,327 | 1,386,391 |
| Stepchild | 18,506 | 271,886 | 2,406,193 |
| Grandchild | 55,540 | 658,018 | 5,819,998 |
| Other relatives | 14,012 | 199,567 | 1,824,973 |
| Foster child or other unrelated child | 8,767 | 98,052 | 1,295,373 |
| Estimated number of Foster Children* | 1,938 | 17,360 | 634,672 |

Note: Estimates from survey data have associated sampling error not presented in this table.

Source: U.S. Census Bureau, 2018-2022 5 Year American Community Survey, B09018.
 *Texas Department of Family and Protective Services, 2022
 **Foster Care Statistics, 2022. U.S. Department of Health and Human Services, Administration for Children and Families, Children's Bureau

Table 3-24 Foster Care Students, Selected Districts, 2022-2023

| School Districts | Total Foster Care Students | Total Enrollment | % Foster Students |
|-----------------------|----------------------------|------------------|-------------------|
| South San Antonio ISD | 26 | 7,872 | 0.33 |
| East Central ISD | 18 | 10,617 | 0.17 |
| Edgewood | 10 | 8,177 | 0.12 |
| Harlandale | 30 | 12,174 | 0.25 |
| Northside ISD | 505 | 102,719 | 0.49 |
| San Antonio | 65 | 45,255 | 0.14 |
| Southwest ISD | 55 | 13,747 | 0.40 |
| Texas | 12,265 | 5,518,432 | 0.22 |

Source: Texas Education Agency, Student Program Reports, 2022-2023.

Trended relationships between school districts and Bexar County's age specific population were used to estimate the age-eligible children for each program. Then, the percentage of foster children was applied to these numbers to estimate current age-eligible foster children. Based on the current trend, forecasting was used to estimate the number of projected age-eligible foster children living in these geographies. According to the estimates, in 2022 six foster children aged 3 to 4 resided in the South San Antonio ISD area. Age-eligible foster children population in SSAISD and select school districts around SSAISD are expected to remain stable through 2024 (see Tables 3-25 and 3-26).

Table 3-25 Current and Forecasted Number of Foster Care Children aged 3-4 by ISD, 2020-2024

| School Districts | 2020 | 2021 | 2022 | 2023 | 2024 |
|-------------------|------|------|------|------|------|
| South San Antonio | 11 | 9 | 6 | 5 | 5 |
| East Central | 12 | 8 | 3 | 3 | 3 |
| Edgewood | 11 | 10 | 2 | 2 | 2 |
| Harlandale | 8 | 7 | 4 | 4 | 4 |
| Northside | 98 | 111 | 97 | 98 | 99 |
| San Antonio | 25 | 14 | 12 | 13 | 13 |
| Southwest | 14 | 15 | 14 | 13 | 3 |

Source: U.S. Census Bureau, 2018 & 2022 5 Year American Community Survey, B09001.
 Texas Education Agency, Student Program Reports, 2020-2021, 2021-2022, 2022-2023, 2023-2024
 TDC Population Projections, 2018
 Note: Estimates from survey data have associated sampling error not presented in this table.

Disabled Children

The Texas Department of Assistive and Rehabilitative Services (DARS) collaborates with the Early Childhood Intervention (ECI) programs to provide services for Texas families with children aged 0-3 years old with disabilities and developmental delays (Texas Department of Assistive and Rehabilitative Services, 2021). Three ECI programs operate in Bexar County and served more than 7,042 children (5.47% of the total population of 0-3 years old) in FY 2021 (see Table 3-26). This proportion is greater than the share of served 0-3 years olds in the state (3.53%), indicating a greater need for, and reliance upon, special needs services for children 0-3 years in Bexar County.

Table 3-26 ECI Enrollment for Bexar County and Texas*, FY 2021

| Geography | Birth-to-3 Population | Total Children Served | Percent of Population Served |
|--------------|-----------------------|-----------------------|------------------------------|
| Bexar County | 128,662 | 7,042 | 5.47% |
| Texas | 1,733,788 | 61,240 | 3.53% |

*Note: Bexar County area is serviced by three Early Childhood Intervention (ECI) centers, which are the Easter Seals Rehabilitation Center, the Center for Health Care Services, and the Brighton Center.
 Source: Texas Department of Assistive and Rehabilitative Services, Early Childhood Intervention, 2021.

Table 3-27 Estimated number and percent of children with a disability under the age of 5 year, 2018-2022

| | Estimated Population Under 5 Years | Estimated Number with a Disability | Estimated Percent with a Disability |
|---|------------------------------------|------------------------------------|-------------------------------------|
| South San Antonio ISD | 3,745 | 26 | 0.7% |
| Bexar County | 133,694 | 1,421 | 1.1% |
| Texas | 1,923,333 | 13,339 | 0.7% |
| Source: U.S. Census Bureau, 2018-2022 5 Year American Community Survey. Table S1810 | | | |

The American Community Survey provides estimates of persons with disabilities (see table 3-27). For 2022, it was estimated that there were 26 children with disabilities in SSAISD. This estimate had a large margin of sampling error due to small numbers, thus the estimate for SSAISD may lack accuracy compared to Bexar County and Texas. SSAISD served 71 children with a disability through the Head Start program in 2022-2023.

Homeless Children

Less information is available for people experiencing homelessness than for other at-risk children. The available data show that 2.3% of families served by the SSAISD HS program experienced homelessness, when compared to the 6.8% and 4.5% of homeless families served at the County and State level respectively (see Tables 3-28 and 3-29) (Office of Head Start, Head Start Enterprise System, Program Information Report, 2022).

Data from the Texas Education Agency show that 0.50% of enrolled students in the South San Antonio ISD experience homelessness, less than the State's (1.32%) (see Table 3-30). The share of homeless students includes all children 0-17. These numbers suggest that a portion of students in SSAISD are age-and-income eligible for Head Start, as well as being homeless.

Table 3-28 Families Experiencing Homelessness in the South San Antonio ISD, 2022

| | Number | Percent |
|--|--------|---------|
| Total Number of HS Families | 309 | 100 |
| Number of Families Experiencing Homelessness Served | 7 | 2.3% |
| Families Experiencing Homelessness that Acquired Housing | 1 | 14.3% |
| Source: Office of Head Start, Head Start Enterprise System, Program Information Report, 2022. | | |
| Note: These numbers include counts from local Head Start providers in the City of San Antonio area | | |

It is worth noting that the number of homeless age-eligible children in the South San Antonio ISD is expected to remain stable and not grow substantially through 2025. However, it is important to note that the COVID-19 pandemic may increase the number of homeless children more than expected due to health and economic circumstances. Forecasts of homeless children were calculated by applying the percentage of homeless students (Table 3-31) to the current and projected population of age-eligible children residing in these areas.

Table 3-29 Families Experiencing Homelessness in Bexar County and Texas, 2022

| | Bexar County | | Texas | |
|---|--------------|---------|--------|---------|
| | Number | Percent | Number | Percent |
| Total Number HS Families | 6,593 | 100 | 49,326 | 100 |
| Number of Families Experiencing Homelessness Served | 451 | 6.8% | 2,211 | 4.5% |
| Families Experiencing Homelessness that Acquired Housing | 100 | 22.2% | 432 | 19.5% |
| Source: Office of Head Start, Head Start Enterprise System, Program Information Report, 2022. | | | | |

Table 3-30 Homeless Students, Selected Districts, 2022-2023

| School Districts | Total Homeless Students | Total Enrollment | % Homeless Students |
|---|-------------------------|------------------|---------------------|
| South San Antonio ISD | 39 | 7,872 | 0.50% |
| East Central ISD | 42 | 10,617 | 0.40% |
| Edgewood | 118 | 8,177 | 1.44% |
| Harlandale | 89 | 12,174 | 0.73% |
| Northside ISD | 588 | 102,719 | 0.57% |
| San Antonio | 1,188 | 45,255 | 2.63% |
| Southwest ISD | 291 | 13,747 | 2.12% |
| Texas | 72,654 | 5,518,432 | 1.32% |
| Source: Texas Education Agency, Student Program Reports, 2022-2023. | | | |

Table 3-31 Forecasted Homeless 3-4 Years Old Student by ISD, 2021-2025

| School Districts | 2021 | 2022 | 2023 | 2024 | 2025 |
|--|-------------|-------------|-------------|-------------|-------------|
| South San Antonio | 10 | 8 | 8 | 13 | 14 |
| East Central | 9 | 7 | 7 | 9 | 9 |
| Edgewood | 22 | 27 | 26 | 33 | 33 |
| Harlandale | 21 | 12 | 13 | 12 | 12 |
| Northside | 80 | 113 | 114 | 162 | 164 |
| San Antonio | 192 | 231 | 246 | 377 | 382 |
| Southwest | 56 | 50 | 46 | 42 | 42 |
| Source: U.S. Census Bureau, 2017 & 2022 5 Year American Community Survey, B09001. Texas Education Agency, Student Program Reports, 2020-2021, 2021-2022, 2022-2023 & 2023-2024. TDC Population Projections, 2018 Note: Estimates from survey data have associated sampling error not presented in this table. | | | | | |

4. Education, Health, Nutrition and Social Service Needs

Education

San Antonio offers a number of opportunities for higher education to its residents. In 2022, there were 47 colleges and technical schools located within Bexar County (National Center for Education Statistics, Custom College Navigator Search, 2024). Of these institutions, 17 were less-than-two-year programs, 13 were two-year programs, and 17 were four-or-greater year programs. These institutions include not-for-profit universities and accredited community colleges.

Educational attainment in the South San Antonio ISD is generally lower when compared to Bexar County, Texas, and the United States in several areas (see Table 4-1). About 31.5% of residents did not have a high school diploma or GED, which was higher when compared to 14.1% of County, 14.8% in Texas and 10.8% in the U.S. The percentage of residents in South San Antonio ISD with a high school diploma or GED was higher (34.1%) than the percentages in Bexar County, Texas, and the United States. However, the post-secondary education rate was low in SSAISD, which explains the higher high school diploma or GED rate. Conversely, residents in South San Antonio ISD were significantly less likely to have earned a Bachelor's degree or higher (9.8%) compared to the percentages in Bexar County, Texas, and the United States.

Table 4-1 Educational Attainment among Persons Aged 25 Years and Older, Bexar County, Texas, the United States, 2018-2022

| | South San Antonio ISD | | Bexar County | | Texas | | United States | |
|--|-----------------------|------|--------------|------|------------|------|---------------|------|
| | Total | % | Total | % | Total | % | Total | % |
| People 25 and over | 28,863 | 100 | 1,297,977 | 100 | 18,910,948 | 100 | 226,600,992 | 100 |
| No high school diploma | 9,069 | 31.5 | 183,190 | 14.1 | 2,792,334 | 14.8 | 24,599,698 | 10.8 |
| High school graduate or equiv.* | 9,830 | 34.1 | 318,848 | 24.6 | 4,626,129 | 24.5 | 59,741,825 | 26.4 |
| Some college, no Bachelor's** | 7,122 | 24.7 | 400,942 | 30.9 | 5,390,698 | 28.5 | 64,508,122 | 28.4 |
| Bachelor's degree or higher | 2,842 | 9.8 | 394,997 | 30.4 | 6,101,787 | 32.3 | 77,751,347 | 34.3 |
| Source: U.S. Census Bureau, 2018-2022 5 Year American Community Survey, S1501 Notes: *Includes people who earn a GED. **Includes people with an Associate's degree, but not a Bachelor's degree. Estimates from survey data have associated sampling error not presented in this table. | | | | | | | | |

The percentage of adults aged 25 and older with a high school degree ranged between 62.8% in Edgewood ISD to 91.5% in Northside ISD (see Figure 4-1). Except for East Central ISD and Northside ISD, these proportions were substantially lower than the County (85.9%) or the State (85.2%). In addition, a smaller share SSAISD adults have at least a high school diploma (68.6%), in comparison to other geographies. Given that the educational attainment of parents is a strong predictor of children’s educational attainment, those children in districts where fewer adults had attained high school or greater education are in more need of support to succeed in school. Kindergarten readiness and success at an early age are keys to greater educational attainment.

School enrollment estimates from the American Community Survey (ACS) indicate that 12,872 children are enrolled in SSAISD with 890 in nursery and preschool and 28,060 children in Bexar County enrolled in nursery or preschool (see Tables 4-2 and 4-3). Thus, there is a substantial portion of young children residing in SSAISD who are estimated to use public school as a resource for early childhood education.

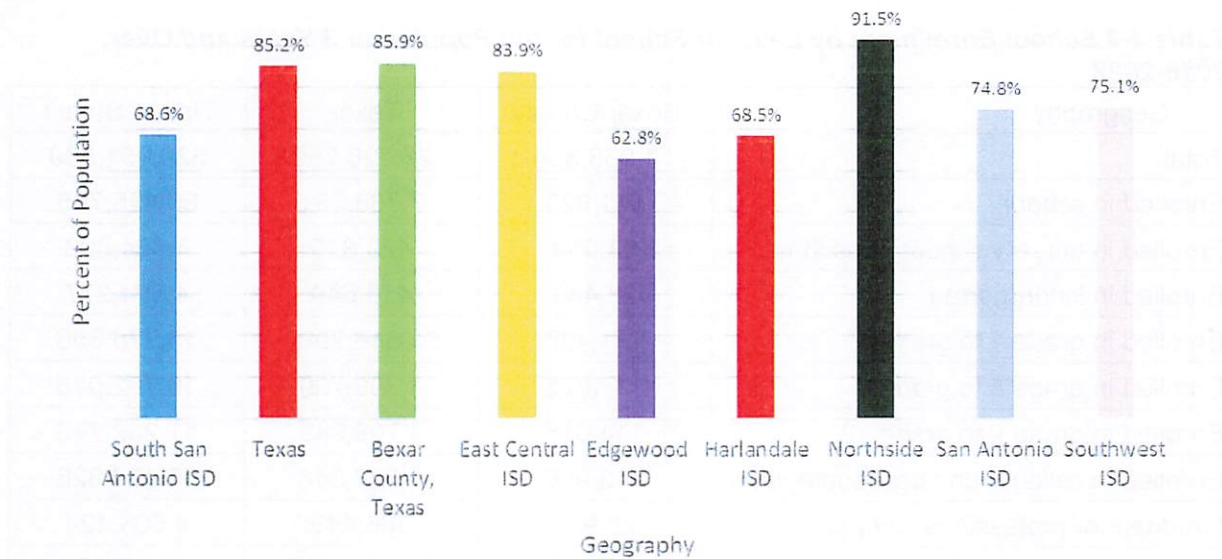


Figure 4-1 Percent of Adult 25 Years and Older with High School Diploma/GED or Greater, 2018-2022

Source: U.S. Census Bureau, 5-Year American Community Survey 2018-2022, DP02

Table 4-2 School Enrollment by Level of School for the Population 3 Years and Over, South San Antonio ISD, 2018-2022

| | South San Antonio ISD |
|---|-----------------------|
| Total: | 46,134 |
| Enrolled in school: | 12,872 |
| Enrolled in nursery school, preschool | 890 |
| Enrolled in kindergarten | 939 |
| Enrolled in grade 1 to grade 4 | 2,612 |
| Enrolled in grade 5 to grade 8 | 3,048 |
| Enrolled in grade 9 to grade 12 | 3,302 |
| Enrolled in college, undergraduate years | 1,779 |
| Graduate or professional school | 302 |
| Not enrolled in school | 33,262 |
| Source: U.S. Census Bureau, 2018-2022 American Community Survey, B14001. Note: Estimates from survey data have associated sampling error not presented in this table. | |

Table 4-3 School Enrollment by Level of School for the Population 3 Years and Over, 2018-2022

| Geography | Bexar County | Texas | United States |
|--|--------------|------------|---------------|
| Total: | 1,938,304 | 28,126,759 | 320,051,509 |
| Enrolled in school: | 541,920 | 7,768,251 | 80,425,705 |
| Enrolled in nursery school, preschool | 28,060 | 429,818 | 4,634,033 |
| Enrolled in kindergarten | 28,444 | 415,649 | 4,004,277 |
| Enrolled in grade 1 to grade 4 | 111,438 | 1,618,299 | 15,776,656 |
| Enrolled in grade 5 to grade 8 | 117,025 | 1,700,739 | 16,782,016 |
| Enrolled in grade 9 to grade 12 | 114,056 | 1,709,949 | 17,242,773 |
| Enrolled in college, undergraduate years | 113,966 | 1,527,348 | 17,479,826 |
| Graduate or professional school | 28,931 | 366,449 | 4,506,124 |
| Not enrolled in school | 1,396,384 | 20,358,508 | 239,625,804 |
| Source: U.S. Census Bureau, 2018-2022 5 Year American Community Survey, B14001. Note: Estimates from survey data have associated sampling error not presented in this table. | | | |

Health and Nutrition

Food insecurity is a significant issue in Bexar County. More than one-quarter of Bexar County families received SNAP in 2020 (see Table 4-4). More recent estimates of public assistance suggest that the children living in the South San Antonio ISD utilize these services more than the County or State (see Table 4-5).

Access to food appears to be a challenge for many children living in South San Antonio ISD and the County. Families in SSAISD utilize public assistance more widely than the County or State. However, these percentages represent only eligible people who apply for and receive these benefits. These figures do not reflect the potentially substantial number of children and families eligible for these programs and who do not receive benefits.

The prevalence of obesity among high school aged children in Texas in 2019 was 16.9%. The prevalence of obesity was 18.9% for Hispanic and 12.9% for non-Hispanic white high school students. (Source: CDC, 2019 YRBS)

Table 4-4 Percent of Public Assistance Received by Bexar County Residents, 2017-2021

| Program | Year | | | | | | |
|--|--------|------|------|------|--------|--------|--------|
| | 2015 | 2016 | 2017 | 2018 | 2019 | 2020 | 2021 |
| Child (0-17 Years) Receiving TANF (Percent) | 0.5 | 0.4 | 0.5 | 0.5 | 0.4 | * | * |
| Children (0-17 Years) Receiving Supplemental Nutrition Assistance (SNAP, formerly Food Stamps) (Percent) | 32.1 | 31.3 | 31.3 | 31.3 | 28.0 | 29.6 | * |
| Children (0-4 Years) Receiving WIC | 45,896 | * | * | * | 36,107 | 36,043 | 35,319 |

Notes: * data for SNAP 2020,2021; WIC 2016-2018 and SNAP 2021 are not available
Source: Annie E. Casey Foundation, KIDS COUNT, 2015-2021

Table 4-5 Percent of Public Assistance Received by SSAISD, Bexar County, and Texas Residents, 2018-2022

| Program | 2018-2022 | | |
|------------------------------------|--------------------------|--------------|-------|
| | South San Antonio ISD | Bexar County | Texas |
| Supplemental Security Income (SSI) | 12.9% | 5.7% | 4.5% |
| Cash public assistance* | 3.4% | 2.5% | 2.0% |
| Food stamps (SNAP) | 30.6% | 14.1% | 11.5% |

Source: US Census Bureau, 2018-2022 5 Year American Community Survey, DP03.

Note: This data reflects households earning public assistance income and does not reflect age-eligible children alone. Estimates from survey data have associated sampling error not presented in this table.

*Cash public assistance includes TANF.

Social Services

Another factor that affects the overall quality of life of San Antonio and Bexar County residents is the prevalence of child abuse and neglect. The number and rate of confirmed child abuse and neglect cases can indicate the need for social services. Figure 4-2 illustrates the geographic distribution of child abuse rates across Bexar County during 2012, the latest year this information is available. Higher rates of child abuse and neglect are seen in the city's center, including the central east and west areas.

Between 2014 and 2018, the number and rate of victims of child abuse and neglect victims increased across Bexar County while State experienced decreasing trend. From 2018 to 2022 both in Bexar County and State of Texas the number and rate of abused children and neglected victims decreased (see Table 4-6). However, this issue disproportionately targets some children more than others. A demographic breakdown of confirmed child abuse/neglect victims showed that the youngest children (0-2 years) were most affected by child abuse/neglect compared to older children in Bexar County and Texas. Over time, the number of confirmed cases for this age group is constantly about twice the number for the 3-5 age group in Bexar County.

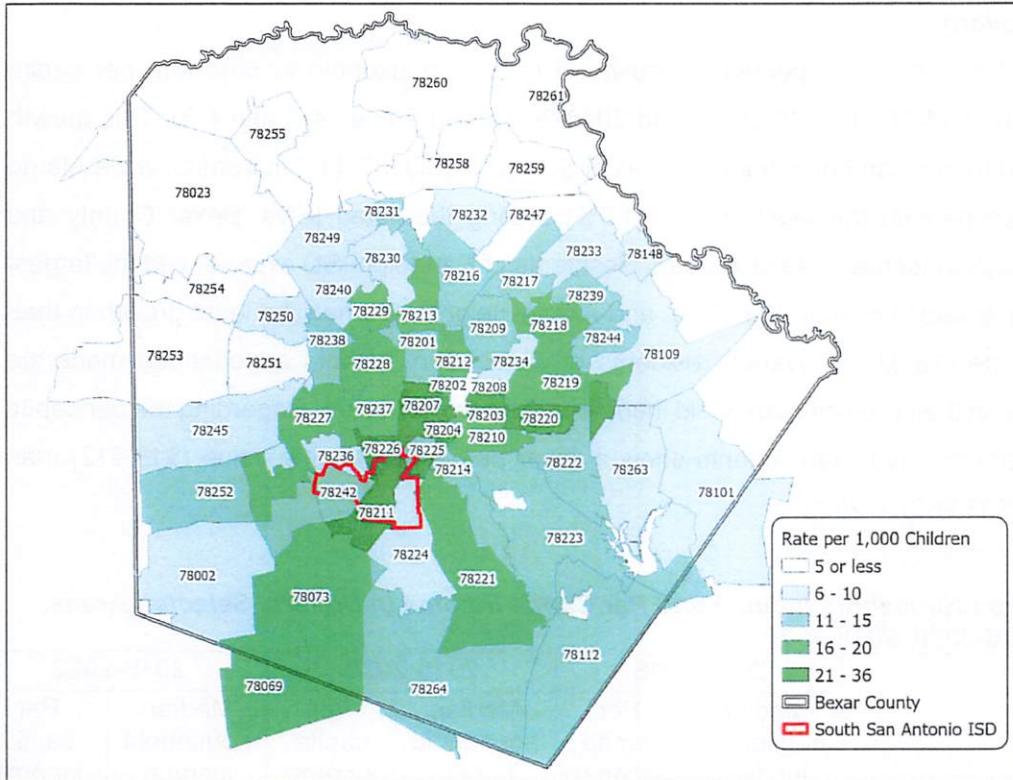


Figure 4-2 Confirmed Victims of Child Abuse/Neglect by Zip Code, Bexar County, 2012
 Source: Texas Department of Protective and Regulatory Services, Management Reporting and Statistics.

Table 4-6 Confirmed Victims of Child Abuse/Neglect-Bexar County, 2014-2022

| | FY 2014 | | FY 2018 | | FY 2022 | |
|---|--------------|---------------|--------------|---------------|--------------|---------------|
| | Bexar County | Texas | Bexar County | Texas | Bexar County | Texas |
| Age 0-2 | 1,783 | 21,011 | 2,100 | 23,062 | 1,805 | 19,224 |
| Age 3-5 | 1,189 | 14,306 | 1,122 | 13,741 | 956 | 11,201 |
| Age 6-8 | 975 | 11,649 | 845 | 10,301 | 711 | 8,243 |
| Total Confirmed Victims | 5,434 | 66,572 | 5,865 | 66,382 | 4,972 | 56,944 |
| Rate of Confirmed Victims per 1,000 Children | 11.1 | 9.39 | 11.33 | 9.01 | 9.04 | 7.42 |

Source: Texas Department of Family and Protective Services, 2014, 2018 & 2022.
 Note: The rate of confirmed victims per 1,000 children is the same by gender and race/ethnicity. Thus, these sections were removed from the chart this year.

Income and Poverty

Many areas in San Antonio experienced growth in median household income and per capita income between 2014-2018, 2016-2020, and 2018-2022 (see Tables 4-7 and 4-8). This growth was the greatest for median household incomes in Somerset ISD (57.41% increase), while Alamo Heights ISD experienced the least growth (1.7%) among the listed ISDs, Bexar County and Texas. All per capita incomes also increased. Residents of Randolph ISD experienced the largest growth in their per capita income (50.60%), and Alamo Heights ISD had the least growth in their per capita income (18.83%). Overall, residents of South San Antonio experienced moderate growth (21.32%) in their median household income in the past few years. Regarding the per capita income, residents in South San Antonio show a lower per capita income value (\$18,612) than Bexar County (\$33,963) in 2022.

Table 4-7 Median Household Income and Per Capita Income in Dollars, Selected Areas, 2014-2018, 2016-2020, 2018-2022

| Geography | 2014-2018 | | 2016-2020 | | 2018-2022 | |
|-------------------------------|-------------------------|-------------------|-------------------------|-------------------|-------------------------|-------------------|
| | Median household income | Per capita income | Median household income | Per capita income | Median household income | Per capita income |
| South San Antonio ISD | 38,382 | 15,594 | 41,776 | 16,548 | 46,566 | 18,612 |
| Alamo Heights ISD | 90,792 | 69,014 | 89,800 | 70,692 | 92,340 | 190,313 |
| East Central ISD | 61,595 | 23,633 | 65,383 | 24,760 | 74,712 | 30,315 |
| Edgewood ISD | 31,410 | 14,348 | 33,615 | 15,209 | 38,365 | 17,580 |
| Fort Sam Houston ISD | 68,221 | 18,364 | 80,781 | 24,720 | 85,903 | 24,161 |
| Harlandale ISD | 36,716 | 15,699 | 40,586 | 17,031 | 47,568 | 20,931 |
| Judson ISD | 62,877 | 25,889 | 63,073 | 27,036 | 72,589 | 31,824 |
| Lackland ISD | 67,500 | 17,658 | 77,692 | 19,548 | 72,625 | 23,812 |
| North East ISD | 62,076 | 32,687 | 63,602 | 33,403 | 72,663 | 40,037 |
| Northside ISD | 65,250 | 29,713 | 67,492 | 30,987 | 76,754 | 36,747 |
| Randolph Field ISD | 91,534 | 24,335 | 104,375 | 27,371 | 127,625 | 36,648 |
| San Antonio ISD | 33,813 | 18,681 | 37,279 | 20,723 | 41,669 | 24,466 |
| Schertz-Cibolo-Univ. City ISD | 84,111 | 33,170 | 88,415 | 35,175 | 99,868 | 39,709 |
| Somerset ISD | 46,257 | 16,857 | 58,071 | 21,259 | 72,815 | 25,148 |
| Southside ISD | 46,151 | 18,443 | 46,987 | 20,180 | 57,197 | 23,560 |
| Southwest ISD | 52,286 | 16,705 | 54,985 | 18,620 | 62,125 | 22,677 |
| Bexar County, Texas | 55,456 | 26,988 | 58,288 | 28,313 | 67,275 | 33,963 |
| Texas | 59,570 | 30,143 | 63,826 | 32,177 | 73,035 | 37,514 |

Note: Estimates from survey data have associated sampling error not presented in this table.
Source: U.S. Census Bureau, 5-Year American Community Survey, 2018-2022, 2016-2020, 2014-2018, DP03, and calculations derived from those sources.

Table 4-8 Percent Change in Income, Selected Areas 2014-2018, 2018-2022

| Geography | Percent Change in Median Household Income | | Percent Change in Per Capita Income | |
|-------------------------------|---|---------|-------------------------------------|---------|
| | Number | Percent | Number | Percent |
| South San Antonio ISD | 8,184 | 21.32% | 3,018 | 19.35% |
| Alamo Heights ISD | 1,548 | 1.70% | 12,996 | 18.83% |
| East Central ISD | 13,117 | 21.30% | 6,682 | 28.27% |
| Edgewood ISD | 6,955 | 22.14% | 3,232 | 22.53% |
| Fort Sam Houston ISD | 17,682 | 25.92% | 5,797 | 31.57% |
| Judson ISD | 9,712 | 15.45% | 5,935 | 22.92% |
| Harlandale ISD | 10,852 | 29.56% | 5,232 | 33.33% |
| Lackland ISD | 5,125 | 7.59% | 6,154 | 34.85% |
| North East ISD | 10,587 | 17.05% | 7,350 | 22.49% |
| Northside ISD | 11,504 | 17.63% | 7,034 | 23.67% |
| Randolph Field ISD | 36,091 | 39.43% | 12,313 | 50.60% |
| San Antonio ISD | 7,856 | 23.23% | 5,785 | 30.97% |
| Schertz-Cibolo-Univ. City ISD | 15,757 | 18.73% | 6,539 | 19.71% |
| Somerset ISD | 26,558 | 57.41% | 8,291 | 49.18% |
| Southside ISD | 11,046 | 23.93% | 5,117 | 27.74% |
| Southwest ISD | 9,839 | 18.82% | 5,972 | 35.75% |
| Bexar County, Texas | 11,819 | 21.31% | 6,975 | 25.84% |
| Texas | 13,465 | 22.60% | 7,371 | 24.45% |

Note: Estimates from survey data have associated sampling error not presented in this table.
Source: U.S. Census Bureau, 5-Year American Community Survey, 2014-2018, 2018-2022, DP03, and calculations derived from those sources.

In general, residents of the SSAISD are less affluent than residents of the County, or State (see Table 4-9). Specifically, a larger percentage of SSAISD (7.3%) households make less than \$10,000 when compared to the County (5.5%) and the state (5.1%). Also, fewer households in the SSAISD (0.7%) made high incomes (more than \$200,000) in comparison to the county (7.6%), and state (10.6%).

The median household income was also lower in SSAISD than comparable geographies (Table 4-9). The median income was \$46,566 in SSAISD, which is lower in comparison to \$67,275 in Bexar County, and \$73,035 in Texas. Per capita income was also lower in SSAISD (\$18,612) than in Bexar County (\$33,963) and the State (\$37,514). Poverty also affects a larger percentage of SSAISD residents than residents of most school districts, the County, and State in 2022.

SSAISD had relatively higher percentages of families with children under 5 years which were below the poverty threshold (30.5)% than other school districts (ranges from 0% to 27.2%), Bexar County (15.2%), and State (14.4%). Poverty also affects a larger share of SSAISD residents than residents of most school districts, the County and State.

Table 4-9 Income and Poverty in South San Antonio ISD, Area School Districts, Bexar County, and Selected School Districts, 2018-2022

| Geography | Percent of households with less than \$ 10,000 income | Percent of households with more than \$ 200,000 income | Median household income | Per capita income | Percent of all people with related children under 5 whose income is below poverty |
|--|---|--|-------------------------|-------------------|---|
| South San Antonio ISD | 7.3% | 0.7% | 46,566 | 18,612 | 30.5% |
| Alamo Heights ISD | 2.9% | 27.4% | 92,340 | 190,313 | 0.0% |
| East Central ISD | 5.8% | 6.5% | 74,712 | 30,315 | 20.7% |
| Edgewood ISD | 8.8% | 1.2% | 38,365 | 17,580 | 26.0% |
| Fort Sam Houston ISD | 2.0% | 9.2% | 85,903 | 24,161 | 13.6% |
| Harlandale ISD | 6.7% | 0.9% | 47,568 | 20,931 | 26.2% |
| Judson ISD | 2.4% | 4.7% | 72,589 | 31,824 | 15.2% |
| Lackland ISD | 6.0% | 10.0% | 72,625 | 23,812 | 26.2% |
| North East ISD | 4.7% | 9.5% | 72,663 | 40,037 | 13.5% |
| Northside ISD | 4.3% | 8.8% | 76,754 | 36,747 | 10.9% |
| Randolph Field ISD | 0.0% | 10.0% | 127,625 | 36,648 | 0.0% |
| San Antonio ISD | 10.7% | 3.3% | 41,669 | 24,466 | 26.7% |
| Schertz-Cibolo-Univ. City ISD | 2.8% | 10.8% | 99,868 | 39,709 | 5.7% |
| Somerset ISD | 4.6% | 5.4% | 72,815 | 25,148 | 13.4% |
| Southside ISD | 4.5% | 1.9% | 57,197 | 23,560 | 4.2% |
| Southwest ISD | 4.4% | 2.2% | 62,125 | 22,677 | 27.2% |
| Bexar County, Texas | 5.5% | 7.6% | 67,275 | 33,963 | 15.2% |
| Texas | 5.1% | 10.6% | 73,035 | 37,514 | 14.4% |
| Note: Estimates from survey data have associated sampling error not presented in this table. | | | | | |
| Source: U.S. Census Bureau, 2018-2022 5 Year American Community Survey. DP03. | | | | | |

Special forecasts of births below the poverty threshold were also calculated (see Table 4-10). The basis for these forecasts was the forecasted number of births in the ZIP code areas overlapped with SSAISD. Table 3-4 data were used for the forecasting. Then, the percentage of SSAISD poverty among children under 5 years was applied to these birth numbers. These numbers suggest that a stable population of young children residing in SSAISD will continue to fall below the poverty threshold through 2025. But, as with other projections, these results are limited by a degree of error related to the method of calculation and small size of the geography.

Table 4-10 Forecasted Births Born into Poverty, South San Antonio ISD and Select School Districts, 2021-2025

| School District | 2021 | 2022 | 2023 | 2024 | 2025 |
|---|-------------|-------------|-------------|-------------|-------------|
| South San Antonio ISD (Projected Births in Overlapped Zip Code Areas) | 1563 | 1507 | 1451 | 1394 | 1338 |
| Forecasted Births Born into Poverty | 482 | 492 | 473 | 453 | 433 |
| <small>Source: Texas Vital Statistics (VSTAT), 2013-2017. U.S. Census Bureau, 2012-2016 American Community Survey, DP03, B17001. Note: Estimates from survey data have associated sampling error not presented in this table.</small> | | | | | |

Housing

The distribution of housing stock varies substantially across Bexar County (see Table 4-11). Texas had the largest share of vacant housing units compared to Bexar County, or South San Antonio ISD. SSAISD had a relatively smaller proportion (9.3%) of newer housing units (built 2010 or after). Bexar County had a larger proportion (4.4%) of older housing stock compared to SSAISD and Texas. The average household size among owner-occupied and renter-occupied units was largest in SSAISD, with smaller households being found in the County and Texas. The percentage of housing units with no vehicle available in the SSAISD was higher compared to the County and the State. The percentage of housing units with more than 1.5 occupants per room was greater (2.7%) in the SSAISD, in compared to the County and State (1.5%). Finally, median home value was greater in Bexar County (\$222,300) and Texas (\$238,000), when compared to values in the SSAISD (\$114,300). Overall, housing characteristics in the SSAISD tend to reflect older homes, larger family sizes, fewer vehicles available, slightly more occupants per room, and less valuable homes.

Table 4-11 Housing Characteristics for South San Antonio ISD, Bexar County, and Texas, 2018-2022

| | Percent of Housing Units Vacant | Percent Of Housing Units Built After 2010 or After | Percent Of Housing Units Built Before 1939 | Percent Of Housing Units Renter-occupied | Average household size of owner-occupied Unit | Average household size of renter-occupied unit | Percent Of Housing Units with No Vehicles Available | Percent of Housing Units with More than 1.5 Occupants per Room | Median Owner Occupied Home Value |
|-----------------------|---------------------------------|--|--|--|---|--|---|--|----------------------------------|
| South San Antonio ISD | 8.20% | 9.30% | 3.80% | 49.90% | 3.31 | 3.08 | 8.30% | 2.70% | 114,300 |
| Bexar County | 7.90% | 17.30% | 4.40% | 41.30% | 2.92 | 2.42 | 6.40% | 1.50% | 222,300 |
| Texas | 10.00% | 16.80% | 3.20% | 37.60% | 2.89 | 2.46 | 5.30% | 1.50% | 238,000 |

Note: Estimates from survey data have associated sampling error not presented in this table.
 Source: U.S. Census Bureau, 2018-2022 5 Year American Community Survey, DP04.

Homeless Population

The Haven for Hope (H4H) organization provides housing, health, and job placement assistance for homeless men, women, and children in Bexar County. In FY 2023, H4H reported providing services to 3,221 and 6,236 individuals on their Transformational Campus and South Campus respectively (Haven for Hope Fact Sheet 15/05/2024). Approximately 722 of these residents were family members, of which 1085 were children. About 789 were young adults. The average length of stay between June 2022-May 2023 was 51 days irrespective to single person or family.

5. Eligibility Estimates

Method Used to Estimate Age and Income Eligibility

To estimate the age-income eligibility for Head Start enrollees, the population under 5 years old in 2022 was obtained from the U.S. Census Bureau's 2022 American Community Survey 5-Year estimates. Specifically, the number of children aged 3 to 4 years was derived from a specific ACS table (B09001) for SSAISD. The percentage of children under 5 years old living in poverty was estimated using ACS data from the 2018-2022 5-year sample, and this percentage was assumed to be the same for 3-4-year-old children. This percentage was then applied to the estimates of 3-4-year-old children to determine the number of children who were both age and income eligible for Head Start, as shown in Table 5-1.

Table 5-1 Estimates of Age and Income Eligible Children for Head Start by District, 2018-2022

| | 2022 Population of 3 and 4 year old children* | Estimated Percent of Children Under 5 Living Under Poverty** | Estimated Number of Children 3 to 4 Years Old Living Under Poverty | Current Enrollment for South San Antonio ISD (2022-23***) | % of 3 and 4 year old children enrolled in HS | Estimated % of income eligible 3 and 4 Year old children enrolled | Estimated Number of income eligible 3 and 4 year old children not being served by HS |
|--|---|--|--|---|---|---|--|
| South San Antonio ISD | 1,687 | 27.4% | 463 | 329 | 19.5% | 71.0% | 134 |
| Source: *American Community Survey, 2022, 5-Year Sample, B09001 **American Community Survey, 2018-2022, 5-Year Sample, B17001 ***South San Antonio ISD HS Program, Current Enrollment, 2022-2023 | | | | | | | |

One way to gauge the need for services is to assess the projections of the age-eligible population in the area. Projection data for Bexar County are presented below because projections are unavailable for geographies smaller than the county level. The projected number of 3 to 4-year-old children is presented in Tables 5-2 and 5-3. These projections indicate that the number of children of both age groups will continue to increase in Bexar County, from 64,088 in 2022 to 72,123 in 2032 for children aged 3-4. This population growth suggests that the number of children in the County eligible for service will rise. Specifically, the population of age-eligible children will increase by 12.5%, while income-eligible children for HS programs will decrease by 5.3% by 2032 (see Table 5-3).

Forecasts of age-income eligible children living in the South San Antonio ISD and other school districts in the area were calculated by applying poverty estimates from the 2018-2022 American Community Survey to the estimated number of children in South San Antonio ISD and other school districts in Bexar County. Although these estimates include some errors, these forecasts predict that a stable population of age-income eligible children will continue to live in South San Antonio ISD areas well as school districts in the county (see Table 5-4).

Table 5-2 Projected Bexar County Population, by Race: Ages 3-4 Years, 2022-2032

| Year | Total | NH White | NH Black | Hispanic | NH Asian | N Other |
|------|--------|----------|----------|----------|----------|---------|
| 2022 | 64,088 | 12,764 | 3,918 | 43,718 | 1,867 | 1,821 |
| 2023 | 65,098 | 12,823 | 4,002 | 44,434 | 1,960 | 1,879 |
| 2024 | 66,080 | 12,867 | 4,087 | 45,130 | 2,054 | 1,942 |
| 2025 | 67,021 | 12,893 | 4,175 | 45,799 | 2,150 | 2,004 |
| 2026 | 67,914 | 12,905 | 4,257 | 46,433 | 2,252 | 2,067 |
| 2027 | 68,748 | 12,900 | 4,337 | 47,034 | 2,352 | 2,125 |
| 2028 | 69,521 | 12,879 | 4,416 | 47,593 | 2,452 | 2,181 |
| 2029 | 70,241 | 12,841 | 4,494 | 48,110 | 2,557 | 2,239 |
| 2030 | 70,917 | 12,793 | 4,573 | 48,587 | 2,668 | 2,296 |
| 2031 | 71,540 | 12,737 | 4,647 | 49,022 | 2,779 | 2,355 |
| 2032 | 72,123 | 12,678 | 4,715 | 49,425 | 2,891 | 2,414 |

Source: Texas Demographic Center, Texas Population Projections for 2010-2050, Projection Vintage 2018

Table 5-3 Projected Number of Bexar County Age- and Income-Eligible Children, Bexar County, 2022-2032

| Year | Projected number of 3 to 4-year-old Children | Projected number of age and income eligible children for Head Start |
|------|--|---|
| 2022 | 64,088 | 14,087 |
| 2023 | 65,098 | 13,953 |
| 2024 | 66,080 | 13,803 |
| 2025 | 67,021 | 13,633 |
| 2026 | 67,914 | 13,444 |
| 2027 | 68,748 | 13,234 |
| 2028 | 69,521 | 13,003 |
| 2029 | 70,241 | 12,754 |
| 2030 | 70,917 | 12,490 |
| 2031 | 71,540 | 12,209 |
| 2032 | 72,123 | 11,915 |

Note: The Bexar County poverty rate for Related Children Under 5 Years is 22.1% (5-Year American Community Survey, 2018-2022, B09001 & B17001).

Estimates from survey data have associated sampling error not presented in this table.
Source: Texas Demographic Center, Texas Population Projections for 2010-2050, Projection Vintage 2018

Table 5-4 Forecast Income Eligible Children by ISD, 3-4 Year Olds, 2022-2027

| School District | 2022 | 2023 | 2024 | 2025 | 2026 | 2027 |
|-----------------------|-------|------|------|------|------|-------|
| South San Antonio ISD | 493 | 504 | 503 | 501 | 499 | 495 |
| East Central ISD | 541 | 449 | 474 | 499 | 525 | 552 |
| Edgewood ISD | 933 | 828 | 802 | 776 | 748 | 720 |
| Harlandale ISD | 519 | 520 | 481 | 443 | 405 | 368 |
| Northside ISD | 2,981 | 3141 | 3123 | 3098 | 3066 | 3,026 |
| San Antonio ISD | 3,950 | 4036 | 3963 | 3885 | 3803 | 3,717 |
| Southwest ISD | 562 | 511 | 481 | 449 | 415 | 379 |

Source: Texas Demographic Center, Texas Population Projections for 2010-2050, 2018, and American Community Survey, 2008-2012, 2013-2017, 2018-2022, B09001 & B17001

Note: Estimates from survey data have associated sampling error not presented in this table.

Estimated Number of Children with a Disability by Type

The Texas Education Agency's school-age enrollment statistics in special education provides non-age specific counts of children with disabilities by school district (see Table 5-5). The most prevalent disabilities were speech impairment and learning disability. These two disabilities together make up 57.8% (666 out of 1152) of the total estimated disabilities in the South San Antonio ISD's education program.

Age-specific estimates of children aged 3 to 4 with a disability were produced by calculating the proportion of enrolled children in each school district with at least one disability (all ages), and then these calculated proportions were applied to the 2018-2022 American Community Survey estimates of children aged 3 to 4 in each district (see Table 5-6). Note that in this table, the estimated number of children 3 to 4 years old with disabilities may be overestimated. Disability percentages for older children tend to be higher as disabilities are often diagnosed and identified as children age and become more engaged in learning. The prevalence of disability in San Antonio area school districts ranges between 12.7% in Edgewood ISD and 17.5% in Southwest ISD. Approximately 247 children aged 3-4 with disabilities residing in South San Antonio ISD. Therefore, the need for special services among these children is clear.

Table 5-5 Disability Counts by Primary Disability for Select School Districts, 2022-2023

| School District | Orthopedic Impairment | Other Health Impairment | Auditory Impairment | Visual Impairment | Deaf/Blind | Intellectual Disability | Emotional Disturbance | Learning Disability | Speech Impairment | Autism | Traumatic Brain Injury | Developmental Delay | Non-categorical Early Childhood | Total |
|------------------------------|-----------------------|-------------------------|---------------------|-------------------|------------|-------------------------|-----------------------|---------------------|-------------------|--------|------------------------|---------------------|---------------------------------|--------|
| South San Antonio ISD | * | 102 | 12 | * | 0 | 181 | 64 | 395 | 271 | 96 | * | * | 31 | 1,152 |
| East Central ISD | * | 186 | * | * | 0 | 143 | 109 | 462 | 248 | 219 | 0 | * | 26 | 1,393 |
| Edgewood ISD | * | 247 | 10 | * | 0 | 169 | 42 | 224 | 226 | 98 | 0 | * | 23 | 1,029 |
| Harlandale ISD | * | 259 | 11 | * | 0 | 222 | 82 | 479 | 335 | 161 | 0 | * | * | 1,549 |
| Northside ISD | 43 | 1,882 | 81 | 53 | * | 1,226 | 872 | 5,029 | 3,547 | * | 0 | * | * | 12,733 |
| San Antonio ISD | 12 | 102 | 12 | * | 0 | 181 | 64 | 395 | 271 | 96 | 0 | * | 31 | 1,164 |
| Southwest ISD | * | 199 | 21 | * | * | 340 | 127 | 1015 | 410 | 229 | 0 | * | 60 | 2,401 |

Source: Texas Education Agency, PEIMS Standard Reports, Special Education Reports, 2022-2023.

Total refers to number of students with at least one disability

Note: *Indicates numbers that have been masked to comply with FERPA and not accounted with total

Table 5-6 Estimated Number of Children with Disabilities by Selected School District, Bexar County, 2022-2023

| District | Enrolled Students 2022-2023* | Students with Disabilities 2022-2023* | Percent of Population that is Disabled** | Children Aged 3 to 4 Years, 2022** | Estimated Number of 3 to 4 Year Old Children with Disabilities** |
|------------------------------|------------------------------|---------------------------------------|--|------------------------------------|--|
| South San Antonio ISD | 7,872 | 1152 | 14.6% | 1,687 | 247 |
| East Central ISD | 10,617 | 1393 | 13.1% | 1,807 | 237 |
| Edgewood ISD | 8,177 | 1039 | 12.7% | 1,884 | 239 |
| Harlandale ISD | 12,080 | 1549 | 12.8% | 1,688 | 216 |
| Northside ISD | 102,719 | 15189 | 14.8% | 19,720 | 2916 |
| San Antonio ISD | 45,255 | 6585 | 14.6% | 8,791 | 1279 |
| Southwest ISD | 13,747 | 2401 | 17.5% | 2,355 | 411 |

Source: *Texas Education Agency, Student Program Reports, 2022-2023.
 **U.S. Census Bureau, 2018-2022 American Community Survey, B09001
 Note: The percent of student population that is disabled is 14.6% in the combined ISDs and 12.7% in Texas.
 Estimated Number of Children is calculated by multiplying the exact, unrounded percentage of disability with the number of age-eligible children provided by the ACS.

Forecasts of age-eligible disabled children were produced by applying the percentage of disabled students for each school district to projections of age-eligible children. Similar to other forecasts, these numbers suggest a stable and increasing population of age-income eligible children in SSAISD and other school districts needing special needs services through 2026 (see Tables 5-7).

Table 5-7 Current and Forecasted Number of Children with Special Needs, 3-4 Years Old, 2022-2026

| School District | 2022 | 2023 | 2024 | 2025 | 2026 |
|--|-------|-------|------|------|------|
| South San Antonio ISD | 247 | 236 | 239 | 243 | 246 |
| East Central ISD | 237 | 225 | 228 | 231 | 234 |
| Edgewood ISD | 239 | 233 | 236 | 240 | 243 |
| Harlandale ISD | 216 | 226 | 229 | 232 | 236 |
| Northside ISD | 2,916 | 2,948 | 2992 | 3035 | 3075 |
| San Antonio ISD | 1,279 | 1,365 | 1386 | 1405 | 1424 |
| Southwest ISD | 411 | 381 | 387 | 392 | 397 |
| Source: Texas Demographic Center, Texas Population Projections for 2010-2050, 2018, American Community Survey, 2008-2012, 2013-2017, and 2018-2022 B09001, and Texas Education Agency, Student Program Reports, 2022-2023. | | | | | |
| Note: Estimates from survey data have associated sampling error not presented in this table. | | | | | |

6. Available Resources for Social Services

Health

The San Antonio Metropolitan Health District's (Metro Health) Immunization Division has several programs to increase vaccination rates and decrease the rate of vaccine preventable diseases in the community. The Immunization Outreach, Education, and Partnership program (IOEP) provides educational presentations to the community and local schools, attends community health/resource fairs, and participates in community conferences and lectures. The IOEP program targets under-immunized communities through partnerships with the Texas Vaccines for Children and Adult Safety Net programs. Additionally, the IOEP program facilitates the Immunize San Antonio (IZSA) Coalition, which promotes immunizations in diverse populations across the lifespan through collaboration and education. Education and services are provided via three outreach and education programs: Infant/Childhood, Adolescent/Adult, and the Immunization/Women Infant and Children (WIC) Linkage. The WIC Linkage is designed to increase immunization coverage levels among all WIC clients and children birth through five years of age using immunization assessments, reminder/recall, provider referrals, and targeted education efforts.

The San Antonio Metropolitan Health District (Metro Health) has been implementing efforts under a Healthy Kids Healthy Communities grant. Metro Health convened a diverse network of partners, called the Healthy Kids Healthy Communities Partnership to plan and implement strategies to increase opportunities for physical activity and access to healthy foods for children and families. The HKHC Partnership primarily focuses its work within the boundaries of the Westside Development Corporation, a densely populated area of the near west side of San Antonio, with a population of over 116,000 residents, nearly 96% of which are Hispanic. The HKHC Partnership includes the City of San Antonio's Planning & Development Services and Parks & Recreation Departments; the Metropolitan Planning Organization; the University of Texas School of Public Health; VIA Metropolitan Transit; the University of Texas Health Science Center at San Antonio – School of Nursing; the San Antonio Restaurant Association; the Health Collaborative; Texas Public Radio; and several community-based organizations located within the target area.

The Miles of Smiles (MOS) program provides dental evaluations, fluoride and sealants at local elementary schools (COSA Dental Services, 2019). This program is part of Metro Health's dental projects and is meant to address unmet dental needs among children, especially those who are uninsured or underinsured for required care.

In addition, the Dental Program provides oral health assessments for various community groups, conducts oral health educational fairs, but most importantly links those who need urgent care without a dental home to providers who can provide the necessary services to them at little or no cost.

Bexar County manages a discount prescription drug card program, called the Bexar County Rx Card Program (Bexar County Website, Community Health, 2018). This program allows County residents to access prescriptions for a reduced cost. The program is free and does not have expiration dates or annual restrictions.

Nutrition

The San Antonio Food Bank (SAFB) provides food and grocery products to more than 500 non-profit organization partners in 29 county service areas throughout Southwest Texas and distributed to over 100,000 individuals each week (San Antonio Food Bank, 2022). In FY 2021, SAFB provided more than 91 million pounds of food. The mission of the SAFB is to fight hunger in Southwest Texas through food distribution programs, education, and advocacy. The SAFB has indicated that about 35% of their clients were children under the age of 18 years old; most of their senior clients had to choose between food and medicine due to limited income; 46% of households served by them had at least one working adult; single parents, veterans, as well as homeless people are the most needed groups among their clients.

The City of San Antonio's Fit City program, SA.com has been working to improve the health and fitness of San Antonian's (Fit City SA, About US, 2018). One of the major initiatives has been the Healthy School Meals Initiative, which is focused on improving nutrition and physical activity in schools throughout San Antonio. A school committee is developed to discuss school districts' training, tools, and resources regarding healthy school meals. The focus includes innovative techniques for nutritious school meals and increased access to fruits and vegetables. Research has shown schoolchildren significantly increase their consumption of fruits and vegetables when they have a school salad bar.

Child Abuse and Neglect

Texas Child Protective Services (CPS) investigates reports of abuse and neglect of children. It also provides services to children and families in their own homes, places children in foster care, provides services to help youth in foster care transition to adulthood, and places children in adoptive homes.

Family Violence Prevention Services, Inc. (FVPS) in San Antonio has been helping victims of domestic violence in San Antonio since 1977 (Family Violence Prevention Services, Inc., About Us, 2021). FVPS began as an emergency shelter for women and children and now offers a complete array of shelter, transitional housing, counseling, and legal services to help individuals and families recover from the pain and long-term effects of domestic violence. The shelter provides 24-hour crisis intervention, individual and group counseling for women and children, on-site school for children (Pre-K – grade 12), case management services, transitional housing, and on-site primary medical and dental care. FVPS also provides a range of non-residential services.

ChildSafe is a children's advocacy center located within Bexar County (ChildSafe, About Us, 2021). The program is geared towards helping child abuse and/or neglect victims. ChildSafe has a diverse team of law enforcement, health, and CPS professionals that work together to coordinate strategies for each child. The services provided by Child Safe include medical referrals, family support specialists, and counseling services.

Housing

There are multiple housing assistance programs serving San Antonio and Bexar County. The San Antonio Housing Authority (SAHA) provides housing assistance to over 65,000 adults, children, and seniors (San Antonio Housing Authority Annual Report, 2018-19). In FY 2018-19, SAHA helped to maintain 3,644 beacon communities, 5,332 partnerships, and provided 13,056 vouchers, 7,975 mixed-income units, and 6,062 public housing units.

Bexar County, San Antonio, Schertz, Live Oak, Cibolo, Somerset, and Universal City residents are also served by Bexar County Housing Authority (HABC). HABC offers four distinct programs in the area: Housing Choice Voucher (HCV/Section 8 Program; Public Housing/Scattered Site Program; Family Self-Sufficiency (FSS) Program; and Veterans Affairs Supportive Housing (VASH) Program. The HCV Program is a federal housing assistance program that administers

vouchers to residents based on eligibility criteria set by annual income and family size. The Public Housing/Scattered Site Program provides monthly allowances for utility consumption in the household. The Family Self-Sufficiency Program is a five-year incentive program that accrues money due to increased earned income or the family's rent. Upon graduation from the FSS, families can use this account and remain eligible for continued housing. Finally, the VASH Program provides rental assistance for homeless veterans, via a screening and referral process that begins with the VA.

Bexar County offers the Emergency Solutions Grant (ESG) to homeless individuals, and individuals at risk for homelessness. The program's three goals are to provide services to shelter residents; re-house homeless individuals and families; and prevent families and individuals from becoming homeless (Bexar County, Emergency Solutions Grant Program Overview, 2017). ESG also funds preventive programs and services.

Bexar County also offers the HOME Investment Partnership Program (HOME), created under the National Affordable Housing Act of 1990, which increases affordable housing stock for low or very-low income families (Bexar County, HOME Program Overview, 2017). Funds under this program construct new housing; rehabilitate current housing; and improve sites for HOME-based development.

The Community Development Block Grant (CDBG) is another federally funded program that supports low-income individuals and families. CDBG funds are used to provide good housing, a good living environment, and better economic opportunities for low and very low-income persons. Many of those persons are in family units.

Childcare

There were at least 613 licensed childcare facilities in Bexar County in 2023. Most of the area's childcare capacity is concentrated in the northern part of the county (see Figure 6-1). In these areas the supply of childcare appears to exceed the demand, whereas in many of the other districts, the demand appears to exceed the supply. In licensed childcare availability seems inadequate for the number of young children (see Table 6-1 and Figure 6-2).

Table 6-1 Total Childcare Capacity and Population for South San Antonio ISD, 2023

| | Childcare Capacity in Facilities with Pre-School Programs* | Number of Children age-eligible for program** |
|---|--|---|
| South San Antonio ISD (7 facilities) | 958 (mean capacity = 137) | 3,745 |
| Source: * Texas Department of Family and Protective Services, 2023. ** U.S Census Bureau, American Community Survey 2018-2022, B09001 Note: Childcare capacity reflects age-eligible capacity, not capacity for all ages. Estimates from survey data have associated sampling error not presented in this table. | | |

Unfortunately, because childcare centers only produce capacity-based statistics, we cannot be sure how many children are enrolled in these centers, how many are age-eligible for HS or EHS, and the percentage of children enrolled in these centers. Thus, it is difficult to estimate the current number of age-eligible children for HS and EHS that attend these centers and project that number forward.

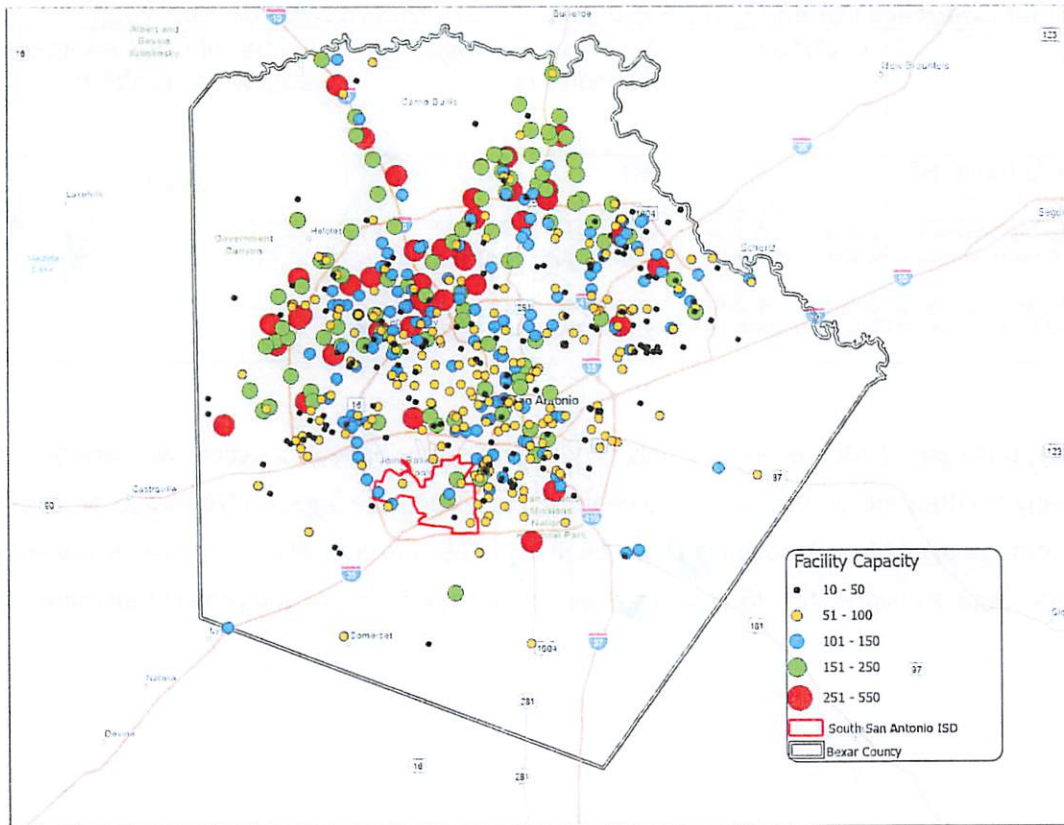


Figure 6-1 Licensed Childcare Facilities by Capacity, Bexar County, 2023
 Source: Texas Department of Family and Protective Services, Custom Licensed Childcare Search, 2023

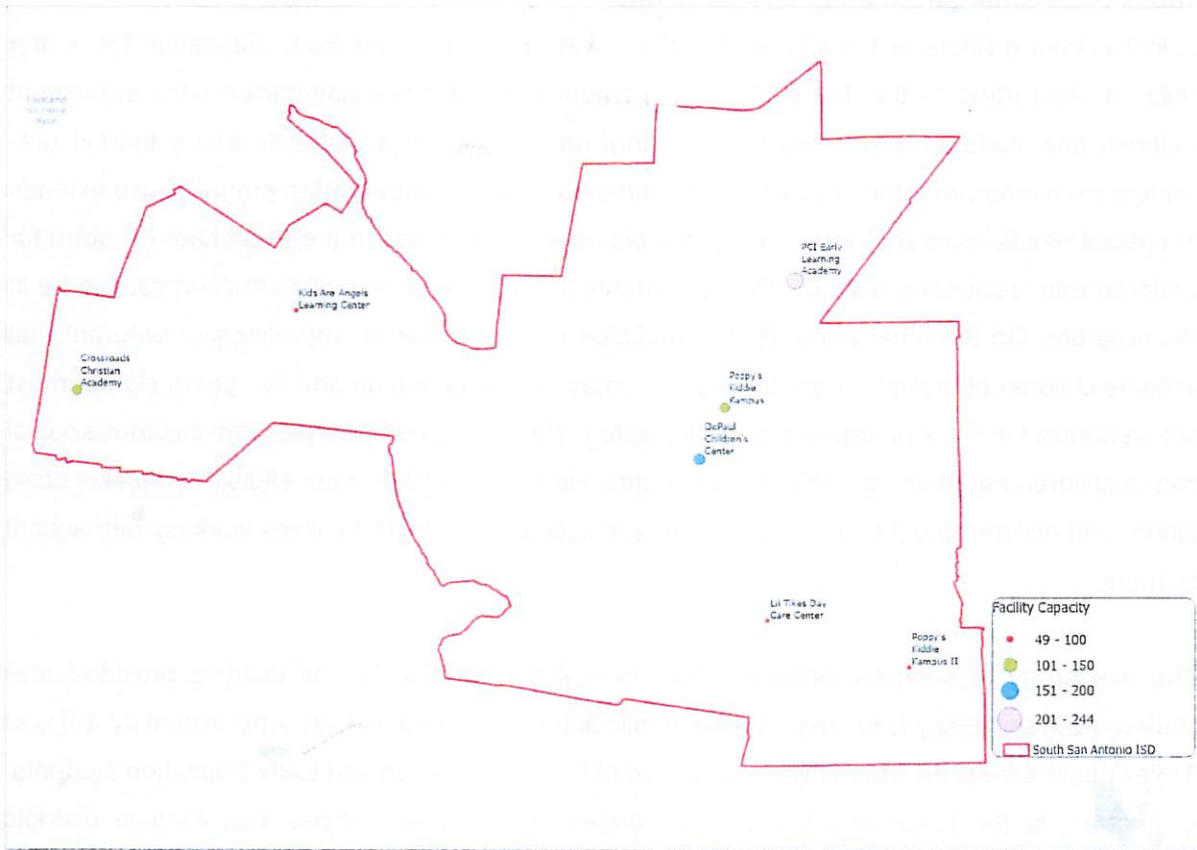


Figure 6-2 Licensed Childcare Facilities by Capacity, South San Antonio ISD, 2023
 Source: Texas Department of Family and Protective Services, Custom Licensed Childcare Search, 2022

Public Pre-Kindergarten and Early Education

Select school districts in Bexar County offer pre-Kindergarten and Early Education for young children. According to the Texas Education Agency (TEA), pre-kindergarten (PK) enrollment includes any students 3 to 4 years of age that are enrolled in a state- or locally funded pre-kindergarten program within the district's boundaries. The pre-kindergarten program also extends to special needs children 3 through 5 years old, in a program called the Preschool Program for Children with Disabilities (PPCD). PPCD students must have 2 hours of instruction daily to be in the program. On the other hand, Early Education (EE) is a more comprehensive program that accepts children of multiple ages. EE students may be between birth and five years old but must not be enrolled in pre-kindergarten or kindergarten. The Early Education program includes special needs children not meeting PPCD requirements, Head Start children not eligible to receive state funds, and children taught by PPCD teachers in licensed childcare facilities working with school districts.

The availability of services differed among San Antonio ISDs, but all districts provided pre-kindergarten and Early Education at their public schools (see Table 6-2). Approximately 4.9% of Texas public school enrollment was comprised of Pre-kindergarten and Early Education students, in contrast to the lower and higher percentages of enrollment across San Antonio districts (average enrollment = 5.7%). Enrollment varied slightly among districts, from a low in Randolph Field ISD (2.6%) to a high in Edgewood ISD (10.4%). Early Education students made up 0.5% of total district enrollment. Pre-K was more readily available in the area (approximately 5% average) of total enrollment in Bexar County. Eight school districts (Judson, San Antonio, Edgewood, Lackland, Southside, South San Antonio, Harlandale, and Fort Sam Houston ISD) have greater enrollments in these grades than the County average (5.90%). In contrast, five ISDs (Southwest, Northside, North East, Alamo Heights, and Randolph) have fewer enrollments in these grades, smaller than the average of the County (see Table 6-2).

Most San Antonio ISDs experienced an increase in their combined Early Education & pre-kindergarten enrollment from 2020-2021 to 2022-2023 (County Percent Change was 15.7%) (see Table 6-3). During these three years, all 15 districts experienced an increase in their enrollment in these grades. South San Antonio ISD, experienced significant positive growth (27.5%) in Pre-kindergarten and Early Education enrollment (see Table 6-3).

San Antonio's utilization of Pre-kindergarten and Early Education resources indicates that there is a solid demand for early childcare. With the increase in enrollment over the past three years,

public school programs serving children under five years are heavily utilized by area families. The lack of childcare resources contrasts sharply against the estimated demand for these services. It indicates that San Antonio residents may need more Head Start and Early Head Start slots than they currently have. Following this trend, these areas may also need alternative young childcare services, especially for children not age-eligible for their local pre-kindergarten (children aged 0-2 years old).

Table 6-2 Childcare Capacity in Public Pre-Kindergarten and Early Education Classes in San Antonio Area School Districts, 2022-2023

| School District | Pre-Kindergarten | Early Education | Total Enrollment | % Enrolled in PK, PPCD & EE |
|--------------------------|------------------|-----------------|------------------|-----------------------------|
| South San Antonio | 536 | 26 | 7,872 | 7.1% |
| Alamo Heights ISD | 76 | 53 | 4,762 | 2.7% |
| East Central ISD | 591 | 34 | 10,617 | 5.9% |
| Edgewood ISD | 838 | 9 | 8,177 | 10.4% |
| Fort Sam Houston ISD | 105 | 9 | 1,627 | 7.0% |
| Harlandale ISD | 881 | 9 | 12,174 | 7.3% |
| Judson ISD | 2,730 | 62 | 25,871 | 10.8% |
| Lackland ISD | 85 | 0 | 968 | 8.8% |
| North East ISD | 2,006 | 237 | 59,007 | 3.8% |
| Northside ISD | 3,721 | 1,070 | 102,719 | 4.7% |
| Randolph Field ISD | 29 | 9 | 1,462 | 2.6% |
| San Antonio ISD | 4,269 | 25 | 45,255 | 9.5% |
| Southside | 574 | 11 | 5,965 | 9.8% |
| Southwest | 684 | 75 | 13,747 | 5.5% |
| Bexar | 19,154 | 1,611 | 352,882 | 5.9% |
| Texas | 244,284 | 25,110 | 5,518,432 | 4.9% |

Source: Texas Education Agency, Student Enrollment Reports, 2022-2023.

Note:

- Some cells may contain counts showing "less than certain counts" were because of FERPA regulations. This table assumes the counts for the cell is the closest intergals to the range of the value (e.g., 9 was used for <10).
- Not all ISDs contain Pre-Kindergarten and/or Early Education Programs.
- PPCD enrollment has been rolled into the Pre-kindergarten enrollment column.
- Childcare capacity reflects age-eligible capacity, not capacity for all ages.

Table 6-3 Change in Pre-kindergarten and Early Education Enrollment in Select Districts, 2020-2021 to 2022-2023

| District | 2020-2021 | | 2021-2022 | | 2022-2023 | | Percent Change 2020-2021 to 2022- 2023 |
|--------------------------|-----------|-----|-----------|-----|-----------|------|--|
| | Number | % | Number | % | Number | % | % |
| South San Antonio | 464 | 5.6 | 494 | 6.2 | 562 | 7.1 | 27.5 |
| Alamo Heights ISD | 97 | 2 | 105 | 2.2 | 129 | 2.7 | 35.4 |
| East Central ISD | 361 | 3.7 | 531 | 5.3 | 625 | 5.9 | 59.1 |
| Edgewood ISD | 745 | 8.1 | 721 | 8.6 | 847 | 10.4 | 27.9 |
| Fort Sam Houston ISD | 102 | 6.7 | 92 | 5.6 | 114 | 7.0 | 4.6 |
| Harlandale ISD | 708 | 5.6 | 718 | 5.9 | 890 | 7.3 | 30.5 |
| Judson ISD | 1,448 | 6.1 | 2,280 | 9.3 | 2792 | 10.8 | 76.9 |
| Lackland ISD | 61 | 6.8 | 68 | 7.5 | 85 | 8.8 | 29.1 |
| North East ISD | 1,462 | 2.4 | 1,996 | 3.3 | 2243 | 3.8 | 58.4 |
| Northside ISD | 3,629 | 3.5 | 4,137 | 4.0 | 4791 | 4.7 | 33.3 |
| Randolph Field ISD | 28 | 1.9 | 28 | 1.9 | 38 | 2.6 | 36.8 |
| San Antonio ISD | 3,477 | 7.6 | 3,908 | 8.7 | 4294 | 9.5 | 24.8 |
| Somerset | 228 | 5.7 | 228 | 5.8 | 228 | 5.8 | 1.1 |
| Southside | 236 | 4.2 | 384 | 7.0 | 384 | 7.0 | 65.6 |
| Southwest | 596 | 4.4 | 625 | 4.7 | 625 | 4.7 | 7.0 |
| Bexar County | 13,642 | 4.5 | 17,876 | 5.2 | 17,876 | 5.2 | 15.7 |
| Texas | 218,084 | 4.1 | 245,108 | 4.5 | 245,108 | 4.5 | 10.1 |

Source: Texas Education Agency, Student Enrollment Reports, 2020-2021, 2021-2022, 2022-2023.

Note:

- Some cells may contain counts showing "less than certain counts" were because of FERPA regulations. This table assumes the counts for the cell is the closest intergals to the range of the value (e.g., 9 was used for <10).
- Not all ISDs contain Pre-Kindergarten and/or Early Education Programs.
- PPCD enrollment has been rolled into the Pre-kindergarten enrollment column.
- Childcare capacity reflects age-eligible capacity, not capacity for all ages.

Pre-K 4 San Antonio

Pre-K 4 San Antonio (Pre-K 4 SA) is an education-based initiative that provides pre-kindergarten education to young children living in San Antonio (Pre-K 4 San Antonio, 2020). Children are four years of age may be enrolled at one of four centers (North, South, East and West Education Centers) for full-day care, including meals, educational enrichment, and before & after school care, if necessary (see Figure 6-3). Bilingual instruction is also available at each of the centers. The program began in 2013 and has had a few cohorts of students to date. However, Pre-K 4 SA is heavily used across school districts. (see Table 6-4).

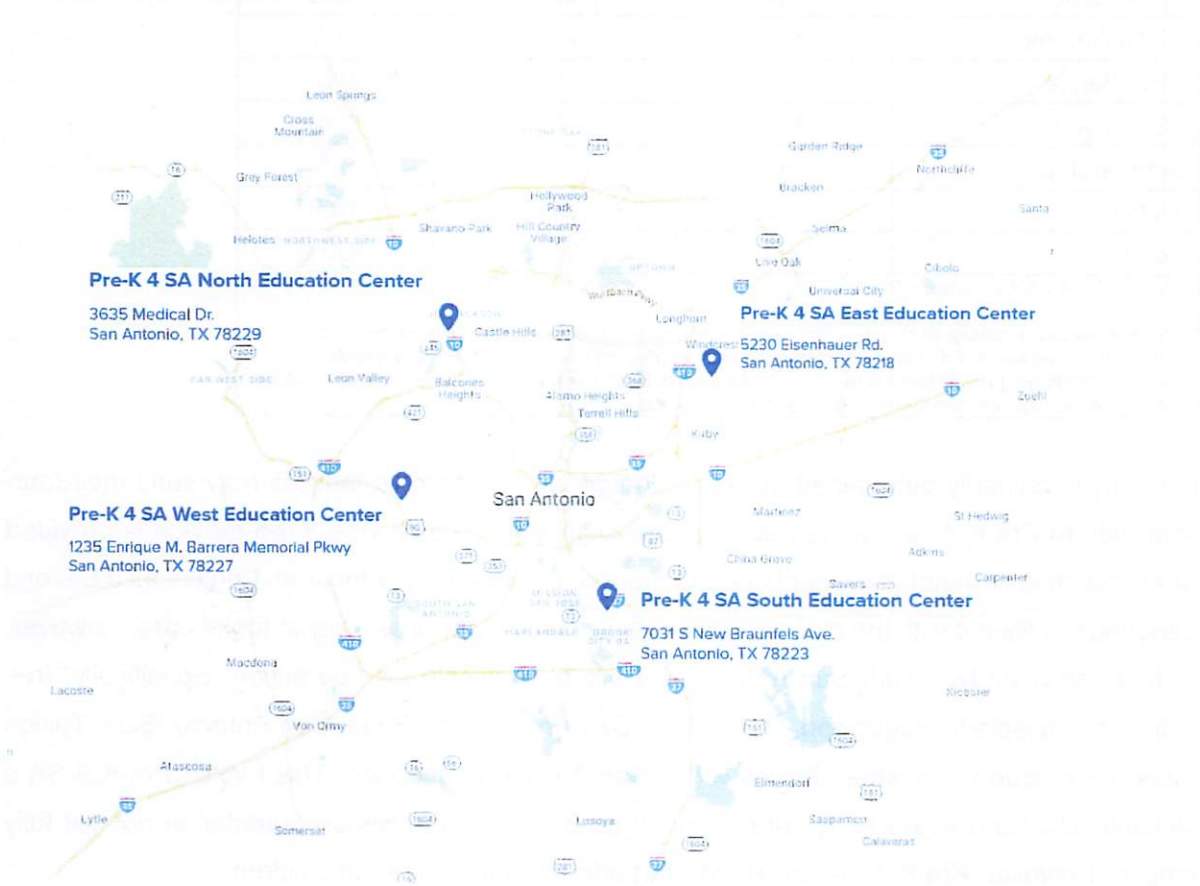


Figure 6-3 Map of Pre-K for San Antonio Centers, 2020

Table 6-4 Pre-K 4 SA Enrollment by District, 2019-2020*

| School District | Allocated Slots* | Number of Enrolled Children | Percentage of Enrolled Children |
|---|------------------|-----------------------------|---------------------------------|
| East Central | 100 | 66 | 3.3 |
| Edgewood | 124 | 98 | 4.9 |
| New Frontiers | - | 64 | 3.2 |
| Harlandale | 120 | 50 | 2.5 |
| North East | 259 | 274 | 13.7 |
| Northside | 564 | 588 | 29.3 |
| San Antonio | 572 | 296 | 14.8 |
| Southside | 61 | 15 | 0.8 |
| Southwest | 100 | 48 | 2.4 |
| Scholarship | 50 | 130 | 6.5 |
| Tuition | 50 | 376 | 18.8 |
| Total | 2,000 | 2,005 | 100.0 |
| Source: Pre-K 4 SA Evaluation Report, 2020 | | | |
| *Pre-K 4 SA has a number of slots that they allocate to eligible children living in each of the school districts that they serve. Each enrolled child is one less remaining slot for Pre-K 4 SA. However, enrollment may be greater than the number of allocated slots when parents pay tuition for their children (who were ineligible for free services) to attend these centers. | | | |

Eligibility is primarily determined by age. Although all San Antonio families may send their four-year-olds to Pre-K 4 SA, some residents are eligible for free service. Free service is provided when the child or their family meets one or more of the criteria: low-income, English as a Second Language, affiliated with the military, homeless or currently or previously in foster care. However, districts serviced by South San Antonio ISD are also eligible for free tuition. Specifically, free tuition is available to Edgewood, Harlandale, San Antonio and South San Antonio ISDs. Tuition rates are offered to all other families within San Antonio boundaries. This makes Pre-K 4 SA a valuable childcare resource for area school districts, and one whose potential is not yet fully tapped. However, Pre-K 4 SA and Head Start offer similar services to children.

Pre-K 4 SA and Head Start programs offer childcare, meals, and educational curriculum to children four years of age. In addition, Head Start offers access to educational services for families and their children aged 3-5. As it is, Pre-K 4 SA and Head Start offer similar services but to different populations. The program is a feasible alternative to Head Start, but only for families whose children are age-eligible and not in need of the additional services that Head Start provides to families.

Pre-K 4 SA and other Pre-K programs have been growing and compete for the best teaching staff in the area. At Pre-K for SA, the median salary of a Master teacher was \$ 64,802 (range: \$62,400-\$76,800). For teacher assistant II the median salary was \$28,600 (range: \$27,400-\$ 30,176). For teacher assistant I the median salary was also \$28,600 (range: \$28,600-\$31,418).

Resources and Services by Children with Disabilities

The Texas Department of Assistive and Rehabilitative Services (DARS) operates the Early Childhood Intervention (ECI) programs for Texas families with children age 0-3 years old with disabilities and developmental delays Texas Department of Assistive and Rehabilitative Services, 2019). This program is funded through IDEA and the State of Texas and provides evaluations, assessments, and services at little or no cost to families. Children over the age of 3 years are not eligible to receive services through ECI but are referred to their local school district for assistance. Local school districts have Early Education classes for children with a disability ages 3 years and up. The three ECI programs that operate in Bexar County served more than 7,209 children (5.78% of the total population of 0-3-years old) in FY 2019. This proportion is greater than the share of served 0-3 year olds in the state (3.68%), indicating a greater need for, and reliance upon, special needs services for children 0-3 years in the Bexar County.

In 2020, United Way San Antonio was affiliated with 137 programs at 69 partner agencies (United Way, About Us, 2020). Approximately 56% (39 total agencies) provide services to children or families with children; 3% of all agencies (2 total agencies) state that they serve as a resource for children with disabilities. These agencies provide counseling, outpatient services, nutritional and fitness activities, prepare young children for life, help students succeed, foster self-sufficiency for individuals and families, and support people in crisis.

Services to Homeless Population

Currently in San Antonio, services for people experiencing homeless have been centralized and are coordinated though Haven for Hope (H4H). H4H works to address the root causes of homelessness through education, job training and behavioral health services. It has 184 partners (70 on-campus partners; 84 referral partners; 30 community partners) that provide access to over 300 services, including counseling, education programs, life skills and legal services (Haven for Hope Fact Sheet, 2021). The Haven's campus was completed in early 2010; in April 2010, the

first members moved onto the campus. Currently, H4H operates two campuses: the north (Transformational) and south (Low-Berrier Shelter) campus.

Besides H4H, the San Antonio Housing Authority's opportunity housing program plays significant role to reduce homelessness in San Antonio. In 2019, approximately 700 homeless, homeless college students, children aging out of foster care and other vouchers were given out to the community (SAHA Annual Report, 2018-19).

Charter Schools

According to the Texas Education Agency (TEA), 72 charter schools in Bexar County provided kindergarten, prekindergarten, and early education programs with open enrollment in FY 2023–2024. These facilities are concentrated in Northside, Northeast and San Antonio ISDs. Only 3 facilities are located in South San Antonio ISD (see Table 6-5). Estimating how many children attend prekindergarten or early education grades and are enrolled in charter schools is difficult as TEA only reports the total enrollments. Unfortunately, it is also difficult to estimate the number of age-eligible children for EHS that attend charter schools now and project the number of children who will attend in the future. However, some children attending these schools are age-and-income eligible for charter schools and would otherwise be served by South San Antonio ISD.

Table 6-5 Charter Schools serving EE, PK, and KG students in Select School Districts, 2023-2024

| Name | Service Address | Service Located In | Grade Served | Enrollment |
|---|--------------------------------|---------------------------|---------------------|-------------------|
| COMPASS ROSE PUBLIC SCHOOLS | 100 CRESTWIND DR | North East ISD | PK-12 | 572 |
| IDEA PUBLIC SCHOOLS | 10138 CULEBRA RD | Northside ISD | KG-05 | 540 |
| IDEA PUBLIC SCHOOLS | 10170 KRIEWALD RD | Southwest ISD | KG-05 | 434 |
| IDEA PUBLIC SCHOOLS | 10434 MARBACH RD | Southwest ISD | KG-05 | 720 |
| SCHOOL OF SCIENCE AND TECHNOLOGY | 11214 N WEIDNER RD | North East ISD | PK-06 | 846 |
| INSPIRE ACADEMIES | 11216 BANDERA RD | Northside ISD | KG-12 | 621 |
| ELEANOR KOLITZ HEBREW LANGUAGE ACADEMY | 11327 DREAMLAND DR | North East ISD | KG-08 | 500 |
| BASIS TEXAS | 11550 I-35 FRONTAGE RD | North East ISD | KG-04 | 282 |
| GREAT HEARTS TEXAS | 12018 BANDERA RD | Northside ISD | KG-08 | 784 |
| SCHOOL OF SCIENCE AND TECHNOLOGY DISCOVERY | 12042 CULEBRA RD | Northside ISD | PK-08 | 737 |
| IDEA PUBLIC SCHOOLS | 1210 HORAL RD | Northside ISD | KG-05 | 693 |
| GREAT HEARTS TEXAS | 12500 SAN PEDRO AVENUE STE 500 | North East ISD | KG-08 | 817 |
| SOUTHWEST PREPARATORY SCHOOL | 1258 AUSTIN HWY | Alamo Heights ISD | PK-05 | 53 |
| IDEA PUBLIC SCHOOLS | 13427 JUDSON RD | North East ISD | KG-05 | 721 |
| LEGACY TRADITIONAL SCHOOLS - TEXAS | 13632 OLD FM 471 | Northside ISD | EE-08 | 604 |
| BEXAR COUNTY ACADEMY | 1481 HILLCREST DR | Northside ISD | EE-08 | 198 |
| JUBILEE ACADEMIES | 1515 GOLIAD RD | San Antonio ISD | PK-08 | 877 |
| UNIVERSITY OF TEXAS UNIVERSITY CHARTER SCHOOL | 1603 BABCOCK RD STE 148 | San Antonio ISD | KG-12 | 52 |
| PRELUDE PREPARATORY CHARTER SCHOOL | 1707 CENTENNIAL BLVD | South San Antonio ISD | PK-08 | 138 |
| GREAT HEARTS TEXAS | 17223 JONES MALTSBERGER RD | North East ISD | KG-12 | 1466 |
| UNIVERSITY OF TEXAS UNIVERSITY CHARTER SCHOOL | 17720 CORPORATE WOODS DR | North East ISD | KG-12 | 39 |
| LEGACY TRADITIONAL SCHOOLS - TEXAS | 1826 BASSE RD | San Antonio ISD | PK-05 | 218 |
| HARMONY PUBLIC SCHOOLS - SOUTH TEXAS | 2015 SW LOOP 410 | San Antonio ISD | EE-05 | 311 |
| GREAT HEARTS TEXAS | 211 BELKNAP PLACE | San Antonio ISD | KG-05 | 466 |
| IDEA PUBLIC SCHOOLS | 217 ROBINSON PL | San Antonio ISD | KG-05 | 528 |
| IDEA PUBLIC SCHOOLS | 222 SW 39TH ST | Edgewood ISD | KG-05 | 587 |

| Name | Service Address | Service Located In | Grade Served | Enrollment |
|--|----------------------------|---------------------------|---------------------|-------------------|
| PREMIER HIGH SCHOOLS | 2235 THOUSAND OAKS STE 130 | North East ISD | EE-05 | 32 |
| KIPP TEXAS PUBLIC SCHOOLS | 239 STARK ST | San Antonio ISD | KG-04 | 502 |
| SOMERSET ACADEMIES OF TEXAS | 25 BURWOOD LN | North East ISD | PK-07 | 173 |
| IDEA PUBLIC SCHOOLS | 2519 MARTIN LUTHER KING DR | San Antonio ISD | KG-05 | 427 |
| IDEA PUBLIC SCHOOLS | 2523 W ANSLEY BLVD | South San Antonio ISD | KG-05 | 699 |
| IDEA PUBLIC SCHOOLS | 3115 MAJESTIC DR | Northside ISD | KG-05 | 665 |
| BASIS TEXAS | 318 E RAMSEY RD | Alamo Heights ISD | KG-05 | 735 |
| JUBILEE ACADEMIES | 325 CASTROVILLE RD | San Antonio ISD | PK-12 | 566 |
| COMPASS ROSE PUBLIC SCHOOLS | 3300 SIDNEY BROOKS ST | San Antonio ISD | PK-05 | 326 |
| BASIS TEXAS | 3303 N ELLISON DR | Northside ISD | KG-05 | 514 |
| GEORGE GERVIN ACADEMY | 3460 NE PKWY | North East ISD | PK-12 | 49 |
| SOMERSET ACADEMIES OF TEXAS | 3803 GLOBAL WAY | East Central ISD | PK-12 | 1251 |
| ROYAL PUBLIC SCHOOLS | 4018 S PRESA ST | San Antonio ISD | KG-12 | 345 |
| VALOR PUBLIC SCHOOLS | 4300 CENTERVIEW DR | San Antonio ISD | KG-12 | 218 |
| KIPP TEXAS PUBLIC SCHOOLS | 4343 W COMMERCE ST | Edgewood ISD | KG-04 | 504 |
| JUBILEE ACADEMIES | 4427 CHANDLER RD | East Central ISD | PK-12 | 1054 |
| SOMERSET ACADEMIES OF TEXAS | 4802 VANCE JACKSON RD | North East ISD | PK-12 | 1211 |
| IDEA PUBLIC SCHOOLS | 5160 MARTINEZ | East Central ISD | KG-05 | 655 |
| COMPASS ROSE PUBLIC SCHOOLS | 522 BILLY MITCHELL | Edgewood ISD | PK-12 | 736 |
| JUBILEE ACADEMIES | 5408 DAUGHTRY DR | Northside ISD | PK-12 | 0 |
| GREAT HEARTS TEXAS | 5538 RESEARCH DR | North Side ISD | KG-10 | 1230 |
| IDEA PUBLIC SCHOOLS | 5555 OLD PEARSALL RD | South San Antonio ISD | KG-05 | 657 |
| HARMONY PUBLIC SCHOOLS - SOUTH TEXAS | 5566 WISEMAN BLVD | Northside ISD | PK-07 | 496 |
| SCHOOL OF SCIENCE AND TECHNOLOGY DISCOVERY | 5707 BANDERA RD | Northside ISD | PK-08 | 554 |
| THE GATHERING PLACE | 5818 NW LOOP 410 | Northside ISD | KG-05 | 618 |
| PROMESA ACADEMY CHARTER SCHOOL | 603 MERIDA | San Antonio ISD | KG-05 | 421 |
| SOMERSET ACADEMIES OF TEXAS | 6070 BABCOCK RD | Northside ISD | PK-06 | 182 |

| Name | Service Address | Service Located In | Grade Served | Enrollment |
|--------------------------------------|--------------------------|-----------------------------------|---------------------|-------------------|
| IDEA PUBLIC SCHOOLS | 6445 WALZEM RD | North East ISD | KG-05 | 643 |
| SOUTHWEST PREPARATORY SCHOOL | 6535 CULEBRA RD | Northside ISD | PK-05 | 85 |
| COMPASS ROSE PUBLIC SCHOOLS | 6660 FIRST PARK TEN BLVD | San Antonio ISD | PK-12 | 223 |
| IDEA PUBLIC SCHOOLS | 6919 S FLORES | Harlandale ISD | KG-05 | 712 |
| GEORGE GERVIN ACADEMY | 6944 S SUNBELT DR | North East ISD | PK-12 | 830 |
| ESSENCE PREPARATORY CHARTER SCHOOL | 723 SE LOOP 410 | San Antonio ISD | PK-06 | 180 |
| SOUTHWEST PREPARATORY SCHOOL | 735 S WW WHITE RD | San Antonio ISD | PK-12 | 186 |
| GREAT HEARTS TEXAS | 7653 N LOOP 1604 E | Judson ISD | KG-08 | 1067 |
| JUBILEE ACADEMIES | 8038 W MILITARY DR | Northside ISD | PK-05 | 272 |
| HARMONY PUBLIC SCHOOLS - SOUTH TEXAS | 8125 GLEN MONT DR | North East ISD | EE-08 | 403 |
| LIGHTHOUSE PUBLIC SCHOOLS | 8138 WESTSHIRE DR | Northside ISD | EE-05 | 233 |
| TEXAS COLLEGE PREPARATORY ACADEMIES | 8453 E FM 1518 N | Schertz-Cibolo-Universal City ISD | KG-12 | 800 |
| BASIS TEXAS | 8519 FLOYD CURL DR | Northside ISD | KG-05 | 771 |
| GREAT HEARTS TEXAS | 8702 INGRAM RD | Northside ISD | KG-10 | 1233 |
| HERITAGE ACADEMY | 8750 FOURWINDS DR | North East ISD | PK-05 | 115 |
| HERITAGE ACADEMY | 8750 FOURWINDS DR | North East ISD | KG-08 | 26 |
| KIPP TEXAS PUBLIC SCHOOLS | 8915 CALLAGHAN RD | Northside ISD | PK-02 | 127 |
| JUBILEE ACADEMIES | 901 E DREXEL AVE | San Antonio ISD | PK-08 | 0 |
| IDEA PUBLIC SCHOOLS | 926 S WW WHITE RD | San Antonio ISD | KG-05 | 602 |
| Total | | | | 37,132 |

Source: Map of Texas Charter Campuses, Texas Education Agency

Local Head Start Programs in Bexar County

The San Antonio area boasts a total of nine Head Start Programs, which includes the one operated by South San Antonio ISD. All enrollment is center-based and provided on a full-day basis, as indicated in Table 6-6. A total of 348 classes were offered, which were expertly run by a dedicated team of 1,444 staff members and 2,595 volunteers.

Table 6-6 Combined Program, Staff and Enrollment Characteristics, Bexar County Head Start Providers, 2022

| Program Type | Head Start |
|--|------------------|
| Number of Programs | 9 |
| | Combined Program |
| Funded Enrollment | |
| Total Funded Enrollment | 6,495 |
| Full Day | 6,495 |
| Part Day | 0 |
| | |
| Center Based | 6,495 |
| Home Based | 0 |
| Number of pregnant women enrolled | 0 |
| Total Classes Operated | 348 |
| Staff Characteristics | |
| Staff | 1,444 |
| Volunteers | 2,595 |
| Source: Office of Head Start, Head Start Enterprise System, Summary Report, 2022 | |

According to Table 6-7, a total of 768 children met the disability criteria for Head Start programs. Among those who qualified, most had an individualized education plan (IEP) and were eligible for special education services (13.8%). The most frequently reported primary disabilities included speech and language impairments (521; 9.37%), Non-categorical/Developmental Delay (124; 2.23%), and autism (77; 1.39%).

Table 6-7 Service Characteristics for Combined Program, Bexar County Head Start Providers, 2022

| Disability Characteristics | Head Start Programs | |
|---|---------------------|---------|
| | Number | Percent |
| Have Individualized Education Program (IEP) and are eligible by LEA to receive special education services | 768 | 13.8% |
| Have Individualized Family Service Plan (IFSP) and are eligible by Part C Agency to receive early intervention services under the Individuals with Disabilities Act | 228 | 14.0% |
| Diagnosed Primary Disability | | |
| Health Impairment | 20 | 0.36% |
| Emotional Disturbance | 0 | 0.00% |
| Speech or Language Impairments | 521 | 9.37% |
| Intellectual Disabilities | 5 | 0.09% |
| Hearing Impairment, including Deafness | 9 | 0.16% |
| Orthopedic Impairment | 4 | 0.07% |
| Visual Impairment, including Blindness | 1 | 0.02% |
| Specific Learning Disability | 1 | 0.02% |
| Autism | 77 | 1.39% |
| Traumatic Brain Injury | 0 | 0.00% |
| Non-categorical/Developmental Delay | 124 | 2.23% |
| Multiple Disabilities (excluding Deaf-Blind) | 0 | 0.00% |
| Multiple Disabilities (including Deaf-Blind) | 0 | 0.00% |
| Source: Office of Head Start, Head Start Enterprise System, Disability Services Report, 2022 | | |

Table 6-8 shows that between 2022-2023, the combined non-SSAISD Head Start programs in Bexar County had a total enrollment of over 5,500 children. The majority of Head Start enrollees, specifically 2,512, received services from the City of San Antonio. In contrast, SSAISD Head Start provided cumulative enrollment services to 329 children, which accounted for approximately 5% of the total Bexar County Head Start enrollment.

Table 6-8 Enrollment Status for South San Antonio ISD and Bexar County Head Start Providers, 2022

| Program Name | Cumulative Enrollment |
|--|-----------------------|
| | Head Start |
| Ascension | 51 |
| AVANCE-San Antonio | 737 |
| City of San Antonio | 2,512 |
| Education Service Center, Region 20 | 845 |
| Family Service Association, San Antonio | 1138 |
| Parent & Child Incorporated | 476 |
| Non-SSAISD Total Enrollment | 5,759 |
| South San Antonio ISD | 329 |
| Source: Head Start Enterprise System, Performance Indicator Report (PIR), 2022 | |

7. Significant Changes between 2021 and 2022

Few significant changes affected the South San Antonio ISD residents between the 2021 and 2022 Community Assessment Updates. The lack of substantial change between years most likely reflects the short period and the lack of data available for these small geographies. However, there have been minor changes in the estimated and projected figures for the number of bilingual courses needed, foster care children, homeless children, income-eligible children in the Head Start program, expected number of children with disabilities, and the number of childcare facilities. Although the changes are not substantially significant and there is a possibility of margin of errors in the anticipated and forecasted numbers, the authority is urged to thoroughly examine these changes in the decision-making process. The decline in enrollment witnessed in recent years as a result of the COVID-19 epidemic is no longer evident, as the number of registered students has once again increased in FY 2022–2023. Parents appear apprehensive about enrolling their children resulting from concerns about exposure and potential infection.

8. Strengths of the Community

South San Antonio ISD offers its residents a range of health, nutrition, housing, childcare, and other resources. Because poverty is concentrated in the city's core, most of these resources are already targeted to central, south, and south-west San Antonio residents. These residents frequently use these resources to supplement their own income. Public assistance utilization is much greater among SSAISD households than city, county, state, and national households. Thus, many of these households already benefit from public assistance and other resources that target low-income families. However, this evaluation many families residing in the South San Antonio ISD may still have unmet needs for health and childcare-related assistance. Families served by South San Antonio ISD's Head Start Program may benefit from additional assistance in these domains.

9. Summary and Conclusion

An assessment of the demographic, social, and economic characteristics and resources of the South San Antonio ISD Head Start (HS) Area indicates that additional services are needed. Many residents in SSAISD are poorer, less well-educated, and more often have larger households, family households, and are more likely to be single parent households than the County or State. In addition, substantial shares of low-income, disabled, and homeless children (but not foster children) reside in the SSAISD. Exposing at-risk children to the enriched environment provided

by the Early Head Start and Head Start programs will result in many of the children advancing their education and socioeconomic status.

Appendix A. Characteristics of Select Bexar County School Districts

Table A-1 Selected Social Characteristics Bexar County School Districts

| Label | East Central ISD | | Edgewood ISD | | Harlandale ISD | | Northside Independent | | San Antonio ISD | | South San Antonio ISD | | Southwest ISD | |
|---|------------------|---------|--------------|---------|----------------|---------|-----------------------|---------|-----------------|---------|-----------------------|---------|---------------|---------|
| | Estimate | Percent | Estimate | Percent | Estimate | Percent | Estimate | Percent | Estimate | Percent | Estimate | Percent | Estimate | Percent |
| 1A HOUSEHOLDS BY TYPE | | | | | | | | | | | | | | |
| Total households | 21,261 | 21,261 | 18,963 | 18,963 | 19,972 | 19,972 | 244,829 | 244,829 | 115,262 | 115,262 | 14,890 | 14,890 | 20,048 | 20,048 |
| Married-couple household | 11,469 | 53.90% | 6,515 | 34.40% | 7,670 | 38.40% | 111,645 | 45.60% | 35,281 | 30.60% | 5,937 | 39.90% | 10,119 | 50.50% |
| With children of the householder under 18 years | 5,508 | 25.90% | 2,506 | 13.20% | 3,036 | 15.20% | 51,779 | 21.10% | 12,016 | 10.40% | 2,783 | 18.70% | 4,526 | 22.60% |
| Male householder, no spouse/partner present | 3,100 | 14.60% | 3,725 | 19.60% | 4,242 | 21.20% | 47,583 | 19.40% | 29,606 | 25.70% | 2,219 | 14.90% | 3,403 | 17.00% |
| Female householder, no spouse/partner present | 5,581 | 26.20% | 7,429 | 39.20% | 6,336 | 31.70% | 67,162 | 27.40% | 43,028 | 37.30% | 5,448 | 36.60% | 4,885 | 24.40% |
| Average household size | 3.01 (X) | | 3.15 (X) | | 3.02 (X) | | 2.72 (X) | | 2.53 (X) | | 3.2 (X) | | 3.34 (X) | |
| Average family size | 3.52 (X) | | 3.86 (X) | | 3.67 (X) | | 3.37 (X) | | 3.45 (X) | | 3.68 (X) | | 3.67 (X) | |
| 1B EDUCATIONAL ATTAINMENT | | | | | | | | | | | | | | |
| Population 25 years and over | 40,379 | 40,379 | 37,061 | 37,061 | 38,791 | 38,791 | 425,858 | 425,858 | 200,939 | 200,939 | 28,863 | 28,863 | 40,783 | 40,783 |
| High school graduate or higher | 33,861 | 83.90% | 23,290 | 62.80% | 26,583 | 68.50% | 389,698 | 91.50% | 150,320 | 74.80% | 19,794 | 68.60% | 30,616 | 75.10% |
| Bachelor's degree | 5,789 | 14.30% | 1,448 | 3.90% | 1,933 | 5.00% | 98,799 | 23.20% | 19,140 | 9.50% | 2,214 | 7.70% | 3,984 | 9.80% |
| 1C DISABILITY STATUS OF THE CIVILIAN NONINSTITUTIONALIZED POPULATION | | | | | | | | | | | | | | |
| Under 18 years | 18,303 | 18,303 | 17,113 | 17,113 | 15,843 | 15,843 | 168,137 | 168,137 | 70,696 | 70,696 | 14,028 | 14,028 | 20,434 | 20,434 |
| With a disability | 1,040 | 5.70% | 1,005 | 5.90% | 1,254 | 7.90% | 9,772 | 5.80% | 4,964 | 7.00% | 1,194 | 8.50% | 1,836 | 9.00% |
| 1D PLACE OF BIRTH | | | | | | | | | | | | | | |
| Total population | 64,339 | 64,339 | 60,157 | 60,157 | 60,674 | 60,674 | 672,660 | 672,660 | 303,738 | 303,738 | 48,192 | 48,192 | 69,233 | 69,233 |
| Native | 58,378 | 90.70% | 49,010 | 81.50% | 50,566 | 83.30% | 589,224 | 87.60% | 257,906 | 84.90% | 39,999 | 83.00% | 59,628 | 86.10% |
| Foreign-born population | 5,961 | 5,961 | 11,147 | 11,147 | 10,108 | 10,108 | 83,436 | 83,436 | 45,832 | 45,832 | 8,193 | 8,193 | 9,605 | 9,605 |
| 1E LANGUAGE SPOKEN AT HOME | | | | | | | | | | | | | | |
| Population 5 years and over | 59,575 | 59,575 | 55,756 | 55,756 | 57,126 | 57,126 | 626,828 | 626,828 | 284,165 | 284,165 | 44,447 | 44,447 | 63,939 | 63,939 |
| English only | 39,911 | 67.00% | 18,975 | 34.00% | 23,483 | 41.10% | 409,152 | 65.30% | 142,561 | 50.20% | 19,014 | 42.80% | 33,593 | 52.50% |
| Language other than English | 19,664 | 33.00% | 36,781 | 66.00% | 33,643 | 58.90% | 217,676 | 34.70% | 141,604 | 49.80% | 25,433 | 57.20% | 30,346 | 47.50% |
| Speak English less than "very well" | 6,123 | 10.30% | 14,169 | 25.40% | 10,561 | 18.50% | 54,547 | 8.70% | 48,235 | 17.00% | 8,647 | 19.50% | 9,201 | 14.40% |
| Spanish | 18,393 | 30.90% | 36,641 | 65.70% | 33,432 | 58.50% | 179,394 | 28.60% | 137,887 | 48.50% | 25,135 | 56.60% | 29,504 | 46.10% |
| Speak English less than "very well" | 5,714 | 9.60% | 14,102 | 25.30% | 10,441 | 18.30% | 41,002 | 6.50% | 47,050 | 16.60% | 8,600 | 19.30% | 8,981 | 14.00% |
| 1F COMPUTERS AND INTERNET USE | | | | | | | | | | | | | | |
| Total households | 21,261 | 21,261 | 18,963 | 18,963 | 19,972 | 19,972 | 244,829 | 244,829 | 115,262 | 115,262 | 14,890 | 14,890 | 20,048 | 20,048 |
| With a computer | 19,843 | 93.30% | 16,594 | 87.50% | 17,497 | 87.60% | 238,616 | 97.50% | 103,511 | 89.80% | 14,054 | 94.40% | 18,852 | 94.00% |
| With a broadband internet subscription | 18,245 | 85.80% | 15,069 | 79.50% | 15,622 | 78.20% | 225,782 | 92.20% | 90,766 | 78.70% | 12,439 | 83.50% | 17,323 | 86.40% |

Selected Social Characteristics

- 1A. East Central has the highest percent of households with married couples with children under 18 years (25.9%) followed by Southwest (22.6%) and Northside (21.1%).
- 1B. Educational attainment was greatest in Northside ISD (91.5% with High School/GED or greater) and lowest in Edgewood (62.8% with High School/GED or greater).
- 1C. Southwest ISD had the highest percent of children under 18 years with a disability (9.0%) and Northside had the lowest (5.8%).
- 1D. All school districts have at least 12 percent of their population being foreign born except East Central (9.3%).
- 1E. Edgewood (65.7%), Harlandale (58.5%) and South San Antonio (56.6%), had the highest percent of persons who speak Spanish at home and who speak English less than very well (25.4%, 18.5%, and 19.5%, respectively).
- 1F. Edgewood has the smallest percent of households with a computer (87.5%) and with broadband internet (78.2%).

Table A-2 Selected Economic Characteristics Bexar County School Districts

| Label | Estimate | Percent | Estimate | Percent | Estimate | Percent | Estimate | Percent | Estimate | Percent | Estimate | Percent | Estimate | Percent |
|--|----------|---------|----------|---------|----------|---------|----------|---------|----------|---------|----------|---------|----------|---------|
| EMPLOYMENT STATUS | | | | | | | | | | | | | | |
| 2A Population 16 years and over | 47,901 | 47.90% | 45,330 | 45.33% | 46,934 | 46.93% | 523,273 | 523.27% | 240,508 | 240.51% | 35,621 | 35.62% | 57,281 | 57.28% |
| In labor force | 30,004 | 62.60% | 28,234 | 57.90% | 27,278 | 58.10% | 367,173 | 70.20% | 141,356 | 58.60% | 22,284 | 62.20% | 31,813 | 62.00% |
| Civilian labor force | 29,481 | 61.50% | 28,107 | 57.60% | 27,246 | 58.10% | 362,393 | 68.50% | 140,795 | 58.30% | 21,970 | 61.30% | 31,214 | 60.90% |
| Employed | 28,009 | 58.50% | 23,814 | 52.60% | 23,732 | 54.82% | 341,288 | 65.20% | 132,181 | 54.10% | 19,806 | 55.30% | 28,222 | 57.10% |
| Unemployed | 1,472 | 3.10% | 2,189 | 4.80% | 1,514 | 3.20% | 19,107 | 3.70% | 10,114 | 4.20% | 2,164 | 6.00% | 2,992 | 3.8% |
| Not in labor force | 17,897 | 37.40% | 19,096 | 42.10% | 19,656 | 41.92% | 156,100 | 29.80% | 99,150 | 41.20% | 13,337 | 37.80% | 19,468 | 38.00% |
| Civilian labor force | 29,481 | 61.50% | 28,107 | 57.60% | 27,246 | 58.10% | 362,393 | 68.50% | 140,795 | 58.30% | 21,970 | 61.30% | 31,214 | 60.90% |
| Unemployment rate | (X) | 3.00% | (X) | 8.00% | (X) | 3.60% | (X) | 3.30% | (X) | 7.20% | (X) | 9.80% | (X) | 6.20% |
| 2B COMMUTING TO WORK | | | | | | | | | | | | | | |
| Workers 16 years and over | 28,019 | 28.02% | 21,102 | 21.10% | 25,311 | 25.31% | 340,077 | 340.08% | 128,741 | 128.74% | 19,821 | 19.82% | 29,166 | 29.16% |
| Car, truck, or van -- drove alone | 22,512 | 78.60% | 18,043 | 69.50% | 17,710 | 70.00% | 244,668 | 72.00% | 80,576 | 70.40% | 13,678 | 68.00% | 21,796 | 74.70% |
| Car, truck, or van -- carpooled | 3,568 | 12.70% | 4,278 | 18.50% | 5,249 | 20.70% | 37,090 | 10.90% | 16,599 | 12.90% | 3,787 | 19.10% | 4,891 | 17.10% |
| Public transportation (excluding taxicab) | 335 | 1.20% | 1,000 | 4.30% | 647 | 2.60% | 3,744 | 1.10% | 9,246 | 8.10% | 687 | 3.50% | 144 | 0.50% |
| Mean travel time to work (minutes) | 28.1 | (X) | 28.6 | (X) | 24.9 | (X) | 26.5 | (X) | 23.3 | (X) | 27.3 | (X) | 29.4 | (X) |
| 2C OCCUPATION | | | | | | | | | | | | | | |
| Civilian employed population 16 years and over | 28,009 | 28.00% | 21,918 | 21.91% | 25,732 | 25.73% | 341,288 | 341.29% | 130,181 | 130.18% | 19,806 | 19.80% | 29,282 | 29.28% |
| Management, business, science, and arts occupations | 8,433 | 30.10% | 3,614 | 15.10% | 4,659 | 18.10% | 148,227 | 43.40% | 34,539 | 26.50% | 3,505 | 17.70% | 6,868 | 23.5% |
| Service occupations | 3,981 | 17.80% | 6,825 | 30.50% | 6,382 | 24.8% | 96,078 | 28.20% | 32,872 | 25.30% | 5,197 | 26.20% | 6,048 | 20.70% |
| Sales and office occupations | 6,617 | 23.60% | 4,533 | 19.00% | 6,190 | 24.10% | 83,667 | 24.60% | 27,181 | 20.90% | 4,698 | 23.70% | 7,078 | 24.20% |
| Natural resources, construction, and maintenance occupations | 3,137 | 11.20% | 5,520 | 25.00% | 3,938 | 15.30% | 23,843 | 7.00% | 18,750 | 14.20% | 3,114 | 15.70% | 4,787 | 16.30% |
| Production, transportation, and material moving occupations | 4,839 | 17.30% | 3,986 | 18.00% | 4,523 | 17.60% | 32,431 | 9.50% | 16,819 | 12.90% | 1,242 | 6.30% | 4,521 | 15.40% |
| 2D INDUSTRY | | | | | | | | | | | | | | |
| Civilian employed population 16 years and over | 28,009 | 28.00% | 21,918 | 21.91% | 25,732 | 25.73% | 341,288 | 341.29% | 130,181 | 130.18% | 19,806 | 19.80% | 29,282 | 29.28% |
| Agriculture, forestry, fishing and hunting, and mining | 635 | 2.30% | 151 | 0.60% | 196 | 0.80% | 3,029 | 0.90% | 1,013 | 0.80% | 151 | 0.80% | 393 | 1.30% |
| Construction | 2,413 | 8.60% | 4,532 | 19.00% | 3,694 | 14.40% | 20,023 | 5.90% | 16,541 | 12.70% | 2,945 | 14.90% | 3,819 | 13.00% |
| Manufacturing | 1,834 | 6.60% | 1,749 | 7.30% | 1,997 | 7.80% | 16,758 | 4.90% | 7,905 | 6.10% | 1,168 | 5.90% | 1,920 | 6.60% |
| Wholesale trade | 960 | 3.40% | 449 | 1.90% | 464 | 1.8% | 6,057 | 1.80% | 2,294 | 1.80% | 478 | 2.40% | 337 | 1.20% |
| Retail trade | 3,773 | 13.50% | 2,249 | 9.40% | 2,744 | 10.7% | 38,723 | 11.40% | 13,853 | 10.7% | 2,596 | 13.10% | 4,904 | 16.70% |
| Transportation and warehousing, and utilities | 1,808 | 6.50% | 1,030 | 4.10% | 1,738 | 6.70% | 17,153 | 5.00% | 5,912 | 4.50% | 877 | 4.40% | 1,890 | 6.50% |
| Information | 302 | 1.10% | 187 | 0.80% | 213 | 0.8% | 5,895 | 1.70% | 1,727 | 1.30% | 359 | 0.80% | 468 | 1.60% |
| Finance and insurance, and real estate and rental and leasing | 1,662 | 6.00% | 1,038 | 4.50% | 1,502 | 5.80% | 38,241 | 11.20% | 6,351 | 4.90% | 1,366 | 7.00% | 1,357 | 3.90% |
| Professional, scientific, and management, and administrative and waste management services | 2,083 | 7.40% | 2,180 | 9.10% | 2,101 | 8.20% | 42,037 | 12.30% | 14,038 | 10.8% | 2,188 | 11.00% | 1,773 | 6.00% |
| Educational services, and health care and social assistance | 6,222 | 22.20% | 5,550 | 23.00% | 5,349 | 20.90% | 83,550 | 24.50% | 29,337 | 22.50% | 1,687 | 18.50% | 6,428 | 22.00% |
| Arts, entertainment, and recreation, and accommodation and food services | 2,785 | 9.90% | 3,047 | 12.70% | 3,158 | 12.40% | 37,332 | 10.90% | 17,332 | 13.30% | 2,909 | 14.70% | 2,573 | 8.80% |
| Other services, except public administration | 1,562 | 5.60% | 1,216 | 5.10% | 1,474 | 5.70% | 14,193 | 4.20% | 7,188 | 5.50% | 812 | 4.10% | 1,145 | 3.90% |
| Public administration | 2,145 | 7.70% | 518 | 2.20% | 1,045 | 4.10% | 18,216 | 5.30% | 4,572 | 3.50% | 472 | 2.40% | 1,094 | 3.70% |
| 2E INCOME AND BENEFITS (IN 2022 INFLATION-ADJUSTED DOLLARS) | | | | | | | | | | | | | | |
| Total householder | 21,281 | 21.28% | 18,843 | 18.84% | 19,972 | 19.97% | 254,828 | 254.83% | 264,829 | 264.83% | 135,262 | 135.26% | 148,890 | 148.89% |
| Less than \$10,000 | 1,332 | 6.20% | 1,662 | 8.80% | 1,339 | 6.70% | 10,577 | 4.10% | 12,331 | 10.70% | 1,091 | 7.30% | 875 | 4.40% |
| \$10,000 to \$14,999 | 524 | 2.40% | 1,458 | 7.70% | 1,250 | 6.30% | 7,150 | 2.90% | 9,630 | 8.40% | 954 | 6.90% | 876 | 4.00% |
| \$15,000 to \$24,999 | 1,359 | 6.30% | 2,318 | 14.00% | 2,387 | 14.00% | 14,311 | 5.90% | 13,611 | 11.70% | 1,621 | 10.90% | 1,582 | 7.90% |
| \$25,000 to \$34,999 | 1,797 | 8.10% | 2,324 | 13.00% | 2,782 | 15.20% | 18,862 | 8.20% | 24,313 | 12.80% | 1,567 | 10.90% | 1,742 | 8.70% |
| \$35,000 to \$49,999 | 1,942 | 8.90% | 3,537 | 19.00% | 2,654 | 13.00% | 27,146 | 11.10% | 15,749 | 13.70% | 2,607 | 17.50% | 2,952 | 14.70% |
| \$50,000 to \$74,999 | 3,266 | 18.00% | 2,882 | 15.00% | 4,228 | 21.00% | 31,041 | 17.60% | 19,496 | 18.90% | 3,519 | 23.60% | 3,800 | 19.60% |
| \$75,000 to \$99,999 | 3,444 | 18.00% | 2,000 | 10.50% | 2,579 | 12.70% | 24,886 | 14.30% | 11,686 | 10.10% | 1,562 | 10.50% | 1,696 | 15.40% |
| \$100,000 to \$149,999 | 4,135 | 20.00% | 3,761 | 19.50% | 3,079 | 15.10% | 45,722 | 18.70% | 10,871 | 9.40% | 1,370 | 7.90% | 1,618 | 18.00% |
| \$150,000 to \$199,999 | 1,582 | 7.40% | 196 | 1.00% | 217 | 1.10% | 23,669 | 9.60% | 3,917 | 3.40% | 695 | 4.70% | 938 | 4.90% |
| \$200,000 or more | 1,385 | 6.50% | 229 | 1.20% | 177 | 0.90% | 21,563 | 8.60% | 3,766 | 3.30% | 100 | 0.70% | 439 | 2.00% |
| Median household income (dollars) | 74,732 | (X) | 38,165 | (X) | 47,566 | (X) | 76,754 | (X) | 41,699 | (X) | 45,566 | (X) | 62,125 | (X) |
| With Social Security | 6,028 | 28.40% | 6,372 | 33.60% | 6,978 | 34.90% | 54,805 | 21.40% | 35,319 | 30.60% | 4,287 | 18.60% | 4,818 | 23.00% |
| Mean Social Security income (dollars) | 18,484 | (X) | 14,720 | (X) | 18,036 | (X) | 20,494 | (X) | 16,326 | (X) | 16,093 | (X) | 16,761 | (X) |
| With Supplemental Security Income | 1,343 | 6.30% | 2,155 | 11.40% | 2,201 | 11.00% | 10,328 | 4.20% | 10,518 | 9.10% | 1,918 | 12.90% | 3,832 | 9.10% |
| Mean Supplemental Security Income (dollars) | 9,635 | (X) | 9,320 | (X) | 9,731 | (X) | 10,579 | (X) | 9,700 | (X) | 9,196 | (X) | 9,176 | (X) |
| With cash public assistance income | 668 | 3.10% | 786 | 4.10% | 793 | 4.00% | 4,011 | 1.50% | 3,561 | 3.10% | 510 | 3.40% | 455 | 2.30% |
| Mean cash public assistance income (dollars) | 2,226 | (X) | 2,653 | (X) | 3,246 | (X) | 3,399 | (X) | 3,072 | (X) | 2,217 | (X) | 2,633 | (X) |
| With Food Stamps/SNAP benefits in the past 12 months | 2,822 | 13.30% | 7,544 | 39.50% | 5,005 | 25.40% | 24,614 | 10.10% | 28,908 | 25.10% | 4,534 | 30.60% | 4,197 | 20.90% |
| Families | 18,964 | 15.96% | 13,307 | 13.30% | 13,912 | 13.91% | 159,829 | 159.83% | 65,175 | 65.17% | 11,053 | 11.05% | 18,017 | 18.02% |
| Less than \$10,000 | 597 | 3.10% | 876 | 6.60% | 756 | 5.40% | 4,444 | 2.80% | 4,703 | 7.20% | 932 | 6.40% | 699 | 4.20% |
| \$10,000 to \$14,999 | 481 | 2.50% | 533 | 4.00% | 526 | 3.90% | 2,842 | 1.80% | 2,990 | 4.60% | 377 | 2.60% | 321 | 2.00% |
| \$15,000 to \$24,999 | 779 | 4.10% | 1,779 | 13.40% | 1,224 | 8.80% | 6,244 | 3.90% | 6,912 | 10.60% | 935 | 6.50% | 1,058 | 6.80% |
| \$25,000 to \$34,999 | 789 | 4.20% | 2,015 | 15.20% | 1,616 | 11.60% | 8,137 | 5.10% | 7,914 | 12.10% | 1,267 | 9.10% | 1,221 | 7.60% |
| \$35,000 to \$49,999 | 1,416 | 7.50% | 2,723 | 20.50% | 1,848 | 13.30% | 14,977 | 9.40% | 9,616 | 14.80% | 1,820 | 16.40% | 2,650 | 16.50% |
| \$50,000 to \$74,999 | 3,071 | 19.00% | 2,336 | 18.00% | 3,327 | 24.20% | 25,292 | 16.80% | 11,520 | 18.30% | 2,784 | 24.90% | 3,371 | 21.00% |
| \$75,000 to \$99,999 | 2,726 | 17.00% | 1,723 | 13.00% | 2,202 | 16.00% | 24,181 | 15.60% | 7,851 | 12.00% | 1,284 | 11.60% | 2,626 | 16.40% |
| \$100,000 to \$149,999 | 3,325 | 22.10% | 901 | 6.80% | 1,278 | 9.30% | 34,510 | 22.40% | 7,690 | 11.80% | 1,093 | 9.90% | 2,864 | 17.90% |
| \$150,000 to \$199,999 | 1,354 | 8.50% | 130 | 1.00% | 436 | 3.10% | 20,158 | 12.80% | 3,097 | 4.70% | 513 | 4.60% | 799 | 5.00% |
| \$200,000 or more | 1,220 | 7.70% | 189 | 1.40% | 101 | 0.70% | 19,600 | 11.90% | 2,512 | 3.90% | 52 | 0.60% | 409 | 2.60% |
| Median family income (dollars) | 86,940 | (X) | 41,345 | (X) | 55,377 | (X) | 92,637 | (X) | 50,774 | (X) | 53,378 | (X) | 65,181 | (X) |
| Mean family income (dollars) | 97,068 | (X) | 56,331 | (X) | 68,618 | (X) | 118,348 | (X) | 71,105 | (X) | 59,903 | (X) | 78,337 | (X) |
| Per capita income (dollars) | 10,313 | (X) | 17,580 | (X) | 20,931 | (X) | 36,747 | (X) | 24,468 | (X) | 18,612 | (X) | 22,677 | (X) |
| Nonfamily households | 5,297 | 5.29% | 5,656 | 5.65% | 6,060 | 6.06% | 85,004 | 85.00% | 90,087 | 90.08% | 3,825 | 3.82% | 4,031 | 4.03% |
| Median nonfamily income (dollars) | 39,149 | (X) | 24,109 | (X) | 27,354 | (X) | 50,133 | (X) | 29,480 | (X) | 31,073 | (X) | 36,898 | (X) |
| Mean nonfamily income (dollars) | 37,992 | (X) | 35,176 | (X) | 44,052 | (X) | 67,208 | (X) | 45,371 | (X) | 38,321 | (X) | 48,478 | (X) |
| Median earnings for workers (dollars) | 41,771 | (X) | 29,757 | (X) | 30,406 | (X) | 41,285 | (X) | 29,801 | (X) | 27,678 | (X) | 32,897 | (X) |
| Median earnings for male full-time, year-round workers (dollars) | 55,732 | (X) | 36,458 | (X) | 38,825 | (X) | 59,183 | (X) | 41,444 | (X) | 40,324 | (X) | 48,328 | (X) |
| | | | | | | | | | | | | | | |

Selected Economic Characteristics

- 2A. San Antonio (41.2%) and Edgewood (42.1%) ISDs have the highest percent of the working age population not in the labor force.
- 2B. San Antonio (4.1%), South San Antonio (3.5%) and Harlandale (2.6%) had the highest percent of workers commuting using public transit.
- 2C. There is substantial variation across school districts in the occupational composition of the workforce, with Edgewood (28.5%), South San Antonio (26.2%) and San Antonio (25.3%) had the highest percent of service occupations.
- 2D. There is substantial variation across school districts in the industrial composition of the workforce.
- 2E. Median household income was lowest in Edgewood (\$38,365), San Antonio (\$41,669), and South San Antonio (\$46,566). Edgewood has the highest percent using SNAP benefits (39.8%) and Northside (10.1%) has the smallest percent. Per capita income was lowest in Edgewood (\$17,580) and low in South San Antonio (\$18,612) and Harlandale (\$20,931) ISDs.
- 2F. Edgewood (26.8%), South San Antonio (25.1%), and San Antonio (23.5%) have the highest percent without health insurance.
- 2G. Edgewood (28.6%) and San Antonio (27.9%) ISDs had the highest percent of people living below poverty. Edgewood (45.0%), San Antonio (43.0%), and Harlandale (31.0%) had the highest percent of children under 5 years living below poverty.

Table A-3 Selected Housing Characteristics Bexar County School Districts

| Label | East Central ISD | | Edgewood ISD | | Harlandale ISD | | Northside ISD | | San Antonio ISD | | South San Antonio | | Southwest ISD | |
|--|------------------|---------|--------------|---------|----------------|---------|---------------|---------|-----------------|---------|-------------------|---------|---------------|---------|
| | Estimate | Percent | Estimate | Percent | Estimate | Percent | Estimate | Percent | Estimate | Percent | Estimate | Percent | Estimate | Percent |
| 3A HOUSING OCCUPANCY | | | | | | | | | | | | | | |
| Total housing units | 22,552 | 22,552 | 21,087 | 21,087 | 21,872 | 21,872 | 263,457 | 263,457 | 131,666 | 131,666 | 16,226 | 16,226 | 21,145 | 21,145 |
| Occupied housing units | 21,261 | 94.30% | 18,963 | 89.90% | 19,972 | 91.30% | 244,829 | 92.90% | 115,262 | 87.50% | 14,890 | 91.80% | 20,048 | 94.80% |
| Vacant housing units | 1,291 | 5.70% | 2,124 | 10.10% | 1,900 | 8.70% | 18,628 | 7.10% | 16,404 | 12.50% | 1,336 | 8.20% | 1,097 | 5.20% |
| Homeowner vacancy rate | 0.8 (X) | | 1.6 (X) | | 1.5 (X) | | 1.3 (X) | | 2.1 (X) | | 2.7 (X) | | 1.4 (X) | |
| Rental vacancy rate | 6 (X) | | 4 (X) | | 6.6 (X) | | 8.6 (X) | | 6.7 (X) | | 8.6 (X) | | 4.1 (X) | |
| 3B UNITS IN STRUCTURE | | | | | | | | | | | | | | |
| Total housing units | 22,552 | 22,552 | 21,087 | 21,087 | 21,872 | 21,872 | 263,457 | 263,457 | 131,666 | 131,666 | 16,226 | 16,226 | 21,145 | 21,145 |
| 1-unit, detached | 16,552 | 73.40% | 16,000 | 75.90% | 17,661 | 80.70% | 163,387 | 62.00% | 81,811 | 62.10% | 10,729 | 66.10% | 17,240 | 81.50% |
| 10 to 19 units | 305 | 1.40% | 811 | 3.80% | 574 | 2.60% | 25,454 | 9.70% | 6,668 | 5.10% | 1,145 | 7.10% | 320 | 1.50% |
| 20 or more units | 702 | 3.10% | 1,208 | 5.70% | 768 | 3.50% | 32,693 | 12.40% | 17,167 | 13.00% | 1,194 | 7.40% | 193 | 0.90% |
| Mobile home | 3,944 | 17.50% | 242 | 1.10% | 384 | 1.80% | 3,176 | 1.20% | 999 | 0.80% | 397 | 2.40% | 2,662 | 12.60% |
| 3C YEAR STRUCTURE BUILT | | | | | | | | | | | | | | |
| Total housing units | 22,552 | 22,552 | 21,087 | 21,087 | 21,872 | 21,872 | 263,457 | 263,457 | 131,666 | 131,666 | 16,226 | 16,226 | 21,145 | 21,145 |
| Built 2010 or later | 7110 | 31.5% | 846 | 4.0% | 1060 | 4.8% | 60245 | 22.9% | 11037 | 8.4% | 1502 | 9.3% | 5602 | 26.5% |
| Built 1990 to 2009 | 7458 | 33.0% | 3145 | 14.9% | 1994 | 9.1% | 100778 | 38.2% | 11642 | 8.8% | 3884 | 24.0% | 6701 | 31.7% |
| Built 1960 to 1989 | 6488 | 28.7% | 8727 | 41.4% | 6091 | 37.1% | 95312 | 36.2% | 37154 | 28.2% | 7543 | 46.6% | 7794 | 36.8% |
| Built 1959 or Earlier | 1496 | 6.7% | 8369 | 39.7% | 10727 | 49.0% | 7122 | 2.7% | 71833 | 54.6% | 3297 | 20.2% | 1048 | 4.9% |
| 3D HOUSING TENURE | | | | | | | | | | | | | | |
| Occupied housing units | 21,261 | 21,261 | 18,963 | 18,963 | 19,972 | 19,972 | 244,829 | 244,829 | 115,262 | 115,262 | 14,890 | 14,890 | 20,048 | 20,048 |
| Owner-occupied | 16,552 | 78.10% | 10,965 | 57.80% | 12,828 | 64.20% | 142,866 | 58.40% | 55,262 | 47.90% | 7,461 | 50.10% | 14,602 | 72.80% |
| Renter-occupied | 4,666 | 21.90% | 7,998 | 42.20% | 7,144 | 35.80% | 101,963 | 41.60% | 60,000 | 52.10% | 7,429 | 49.90% | 5,446 | 27.20% |
| Average household size of owner-occupied unit | 3.08 (X) | | 3.14 (X) | | 3.11 (X) | | 2.99 (X) | | 2.77 (X) | | 3.31 (X) | | 3.26 (X) | |
| Average household size of renter-occupied unit | 2.76 (X) | | 3.17 (X) | | 2.86 (X) | | 2.35 (X) | | 2.31 (X) | | 3.08 (X) | | 3.53 (X) | |
| 3E VEHICLES AVAILABLE | | | | | | | | | | | | | | |
| Occupied housing units | 21,261 | 21,261 | 18,963 | 18,963 | 19,972 | 19,972 | 244,829 | 244,829 | 115,262 | 115,262 | 14,890 | 14,890 | 20,048 | 20,048 |
| No vehicles available | 1,145 | 5.40% | 2,445 | 12.90% | 2,156 | 10.80% | 11,177 | 4.60% | 16,100 | 14.00% | 1,229 | 8.30% | 505 | 2.50% |
| 1 vehicle available | 6,079 | 28.60% | 6,460 | 34.10% | 6,353 | 31.80% | 82,957 | 33.90% | 46,452 | 40.30% | 5,360 | 36.00% | 5,474 | 27.30% |
| 2 vehicles available | 8,353 | 39.30% | 6,091 | 32.10% | 7,195 | 36.00% | 99,058 | 40.50% | 34,577 | 30.00% | 5,102 | 34.30% | 7,784 | 38.80% |
| 3 or more vehicles available | 5,684 | 26.70% | 3,967 | 20.90% | 4,268 | 21.40% | 51,637 | 21.10% | 18,133 | 15.70% | 3,199 | 21.50% | 6,285 | 31.30% |
| 3F VALUE | | | | | | | | | | | | | | |
| Owner-occupied units | 16,595 | 16,595 | 10,965 | 10,965 | 12,828 | 12,828 | 142,866 | 142,866 | 55,262 | 55,262 | 7,461 | 7,461 | 14,602 | 14,602 |
| Median (dollars) | 205,800 (X) | | 95,200 (X) | | 110,200 (X) | | 248,000 (X) | | 131,800 (X) | | 114,300 (X) | | 160,000 (X) | |
| 3G GROSS RENT | | | | | | | | | | | | | | |
| Occupied units paying rent | 4,336 | 4,336 | 6,944 | 6,944 | 6,710 | 6,710 | 99,675 | 99,675 | 55,902 | 55,902 | 7,048 | 7,048 | 5,213 | 5,213 |
| Median (dollars) | 1,271 (X) | | 917 (X) | | 984 (X) | | 1,286 (X) | | 1,000 (X) | | 989 (X) | | 1,234 (X) | |

Selected Housing Characteristics

- 3B. Southwest ISD had the highest percent of housing units that are single family detached (81.5%) followed by Harlandale ISD (80.7%). Northside had the highest percent of housing units that are apartments/condos (22.1%). East Central (17.5%) and Southwest (12.6%) ISDs had the highest percent of housing units that are mobile homes.
- 3C. San Antonio (54.6%), Harlandale (49.0%), and Edgewood (39.7%) ISDs all had a high percentage of the housing stock being older (built 1959 or earlier).
- 3D. East Central (78.1%) and Southwest (72.8%) ISDs had the highest percent of housing units that are owner-occupied. Average Household size was largest in Southwest (3.26 for owner households and 3.53 for renter households) and smallest in San Antonio (2.77 for owner households and 2.31 for renter households) and Northside (2.99 for owner households and 2.35 for renter households).
- 3E. San Antonio (14.0%) and Edgewood (12.9%) ISDs had the highest percent of households without a car.
- 3F. Owner-occupied housing units in Northside ISD were worth the most (\$248,000) and worth the least in Edgewood ISD (\$95,200).
- 3G. Renter-occupied housing units in Northside ISD paid the highest median rent (\$1,286) and paid the lowest rent in Edgewood ISD (\$917).

Table A-4 Demographic and Housing Estimates Bexar County School Districts

| | Label | East Central | | Edgewood | | Harlandale | | Northside | | San Antonio | | South San Antonio | | Southwest | |
|-----------|------------------------------------|--------------|---------|----------|---------|------------|---------|-----------|---------|-------------|---------|-------------------|---------|-----------|---------|
| | | Estimate | Percent | Estimate | Percent | Estimate | Percent | Estimate | Percent | Estimate | Percent | Estimate | Percent | Estimate | Percent |
| 4A | SEX AND AGE | | | | | | | | | | | | | | |
| | Total population | 64,339 | 64,339 | 60,157 | 60,157 | 60,674 | 60,674 | 672,660 | 672,660 | 303,738 | 303,738 | 48,192 | 48,192 | 69,233 | 69,233 |
| | Male | 31,878 | 49.50% | 28,981 | 48.20% | 30,608 | 50.40% | 335,644 | 49.90% | 152,794 | 50.30% | 23,823 | 49.40% | 35,745 | 51.60% |
| | Female | 32,461 | 50.50% | 31,176 | 51.80% | 30,066 | 49.60% | 337,016 | 50.10% | 150,944 | 49.70% | 24,369 | 50.60% | 33,488 | 48.40% |
| | Sex ratio (males per 100 females) | 98.2 (X) | | 93 (X) | | 101.8 (X) | | 99.6 (X) | | 101.2 (X) | | 97.8 (X) | | 106.7 (X) | |
| | Under 5 years | 4,764 | 7.40% | 4,401 | 7.30% | 3,548 | 5.80% | 45,832 | 6.80% | 19,573 | 6.40% | 3,745 | 7.80% | 5,294 | 7.60% |
| | Median age (years) | 34.2 (X) | | 33.4 (X) | | 36 (X) | | 32.7 (X) | | 35.2 (X) | | 31.8 (X) | | 30.9 (X) | |
| 4B | HISPANIC OR LATINO AND RACE | | | | | | | | | | | | | | |
| | Total population | 64,339 | 64,339 | 60,157 | 60,157 | 60,674 | 60,674 | 672,660 | 672,660 | 303,738 | 303,738 | 48,192 | 48,192 | 69,233 | 69,233 |
| | Hispanic or Latino (of any race) | 38,881 | 60.40% | 56,794 | 94.40% | 54,654 | 90.10% | 391,706 | 58.20% | 240,169 | 79.10% | 43,611 | 90.50% | 54,105 | 78.10% |
| | Not Hispanic or Latino | 25,458 | 39.60% | 3,363 | 5.60% | 6,020 | 9.90% | 280,954 | 41.80% | 63,569 | 20.90% | 4,581 | 9.50% | 15,128 | 21.90% |
| | White alone | 16,601 | 25.80% | 1,974 | 3.30% | 5,209 | 8.60% | 180,165 | 26.80% | 38,070 | 12.50% | 3,081 | 6.40% | 9,899 | 14.30% |
| | Black or African American alone | 6,824 | 10.60% | 1,042 | 1.70% | 160 | 0.30% | 45,722 | 6.80% | 18,784 | 6.20% | 793 | 1.60% | 3,229 | 4.70% |
| | Asian alone | 886 | 1.40% | 57 | 0.10% | 150 | 0.20% | 32,409 | 4.80% | 2,182 | 0.70% | 224 | 0.50% | 733 | 1.10% |
| | All Other non-hispanic races | 2,006 | 3.00% | 524 | 0.90% | 776 | 1.30% | 42,365 | 6.20% | 7,775 | 2.70% | 684 | 1.40% | 2,273 | 3.40% |

Demographic and Housing Estimates

- 4A. Northside ISD was the most populated (672,660) school district and South San Antonio (48,192) the least populated.
- 4B. Edgewood ISD had the highest percent of Latino population (94.4%) followed by South San Antonio ISD (90.5%) and Harlandale (90.1%). Northside ISD had the highest percent non-Hispanic White population (26.8%) followed by East Central ISD (25.8%). East Central ISD had the highest percent non-Hispanic Black population (10.6%) and Northside had the highest percent non-Hispanic Asian population (4.8%).