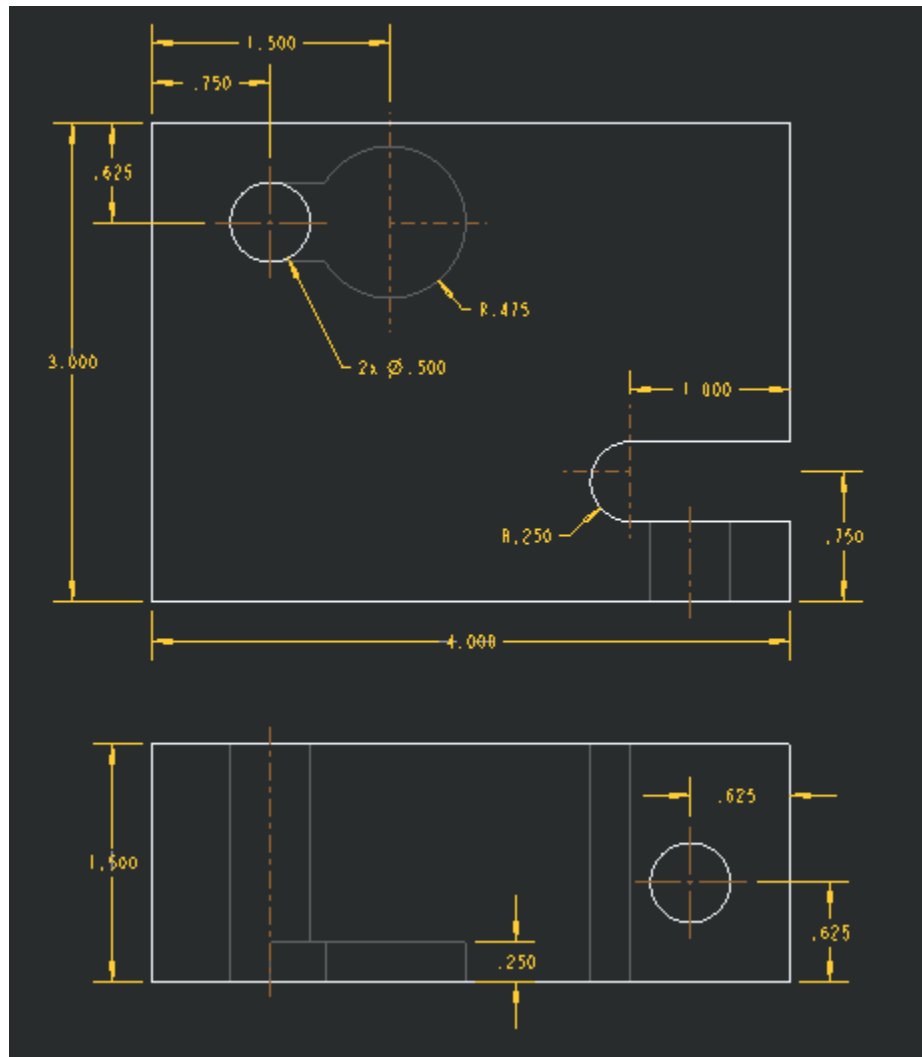
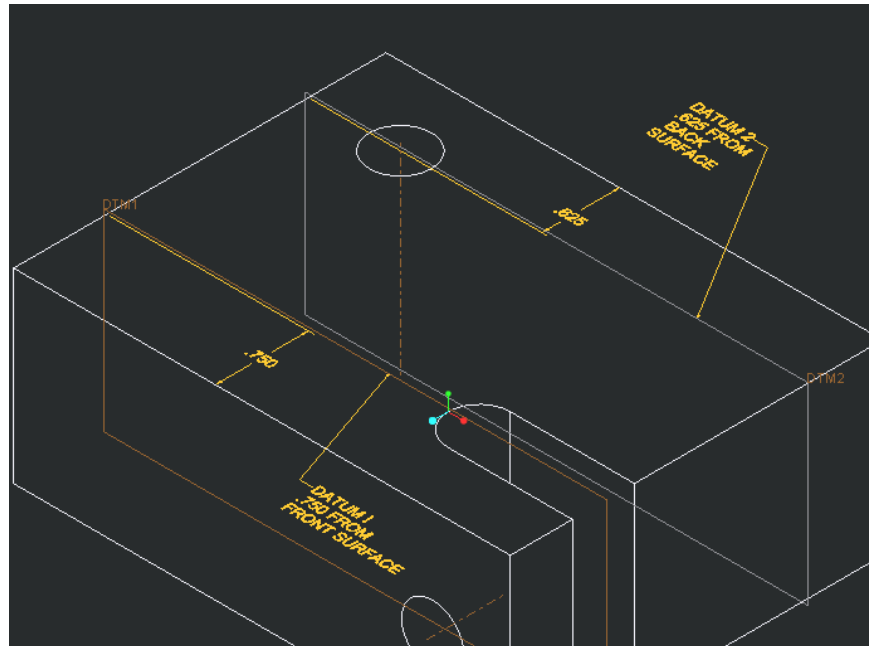


Creo Tutorial: Offset Section

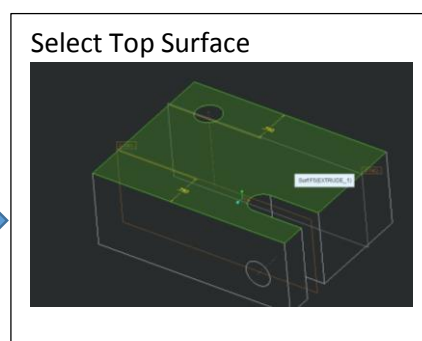
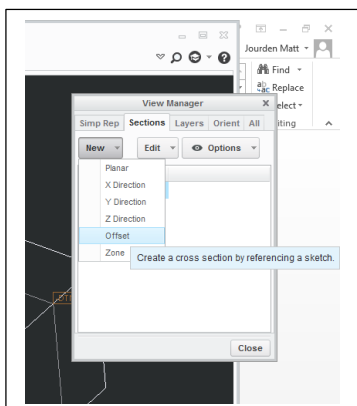
1. Create the following part



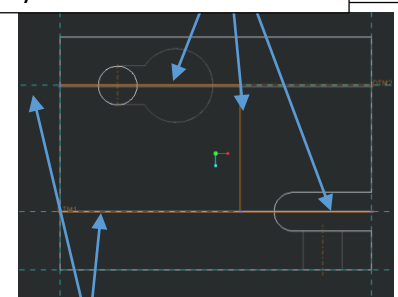
2. Create datums through the center of features one wishes to cut through.
 - a. Model Tab > Plane Icon > Select Surface to Offset from > Type in Offset > Select Ok



3. View Tab > Manage Views > Sections > New > Offset > Name the Cut A > Select the surface to draw the cutting plane line on
 - a. The view plane will rotate perpendicular to the viewer and place the view into a sketch
 - b. Select Reference Tool > Select the Datums that were created for the cutting plane
 - c. Draw the Cutting Plane using the line tool.
 - i. Changing View to Hidden Lines makes easier to see all features
 - ii. NOTE: Only draw lines that represent the Cutting Plane; This means an open profile will be created.
 - iii. NOTE: Cutting Plane must start/end on the edge of the part or extend beyond. DO NOT start/stop in the middle of the part.
 - iv. NOTE: All Cutting Plane Lines should be Vertical or Horizontal
 - d. Green Check when Complete
 - e. Check the view that it is cutting correctly. For Example
 - i. When cutting through a hole the cutting plane cuts through the whole hole showing the complete diameter
 - ii. That features are cut through properly

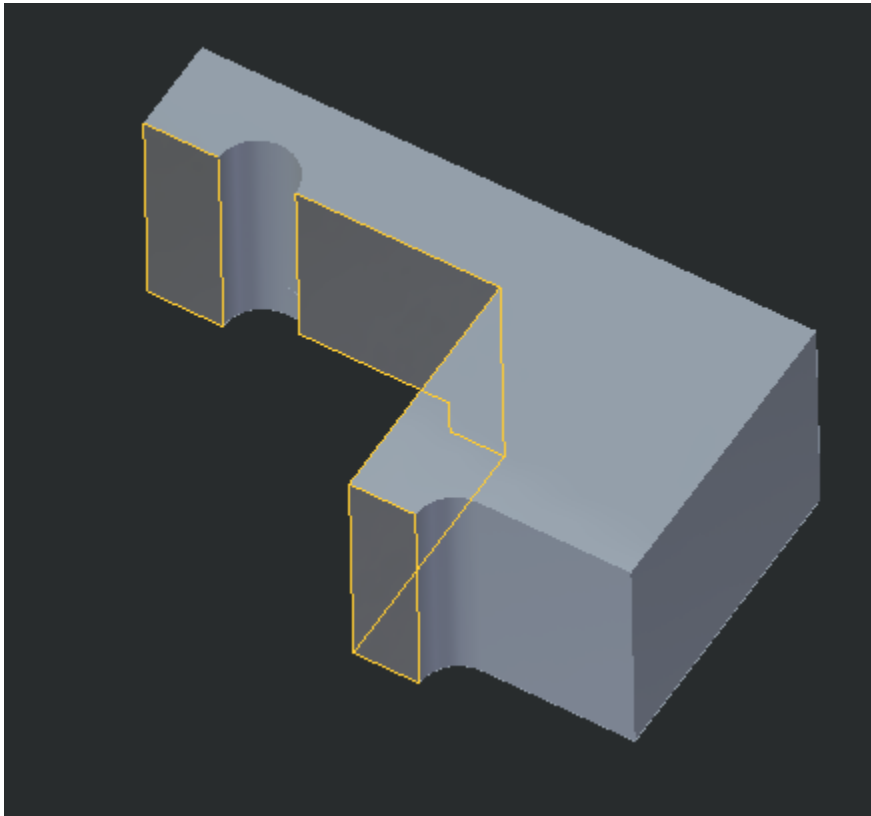


Drawn Cutting Plane w/ Line Tool. Vertical Line about half way between features



Referenced Datums

4. Final Cut

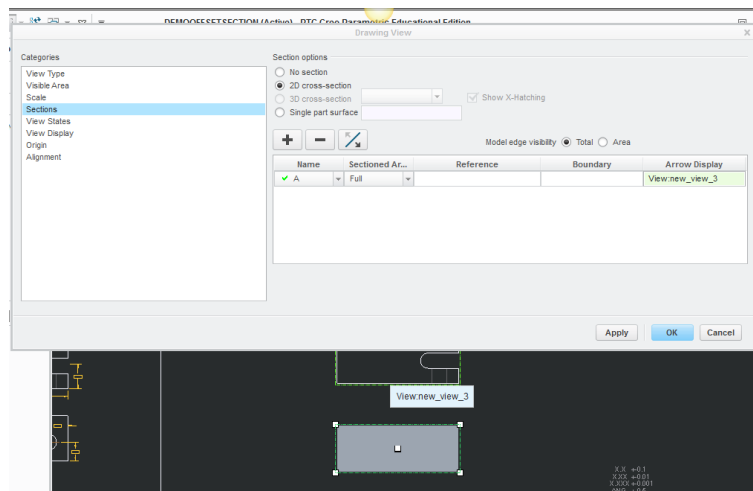


NOTE: Does not matter if cut goes opposite way may reverse cut by selecting reverse cut in the Toolbar

NOTE: Notice the Hole has been cut away from the front of the Slot. We will draw this in the layout.

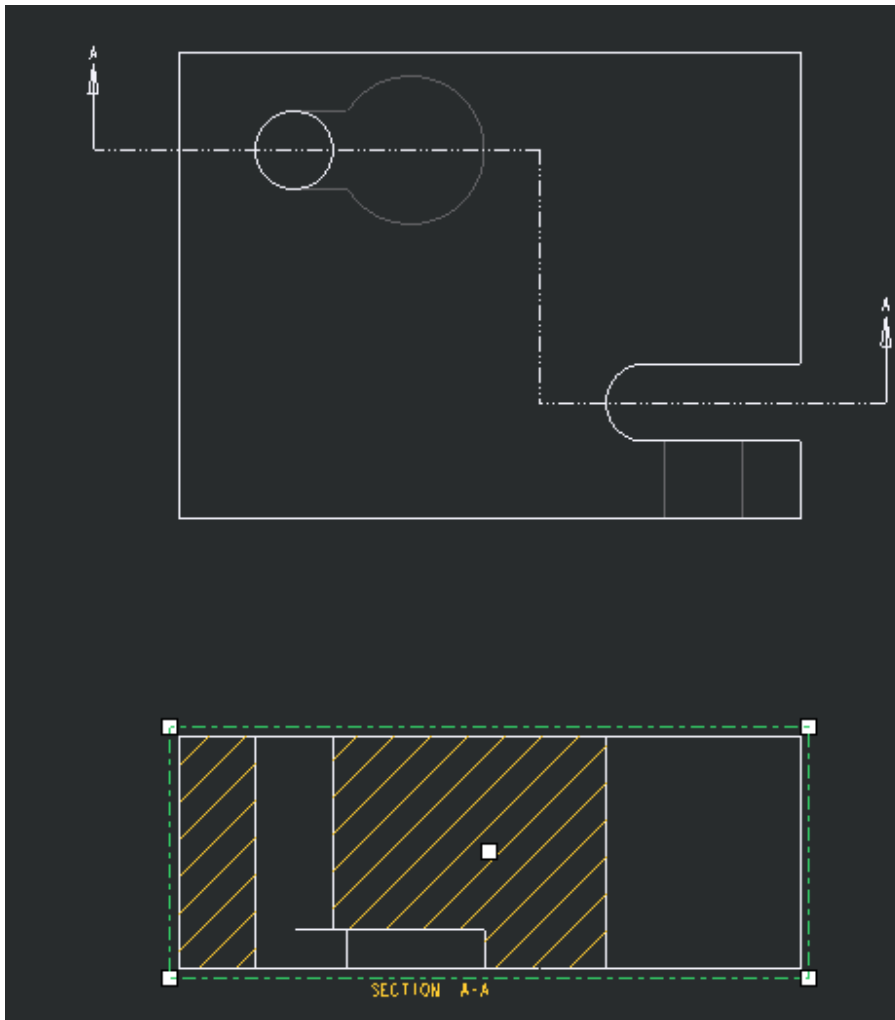
5. Layout Views Top and Front

- a. Center Views on Center of sheet (Front and Top View)
- b. Top View Settings
 - i. Edges = Hidden
 - ii. Tangent Edges = None
- c. Front View (Section View)
 - i. Edges = No Hidden
 - ii. Tangent Edges = None
 - iii. Section Tab
 1. 2D Cross Section
 2. Select Section A
 3. Place Cutting Plane in Top View



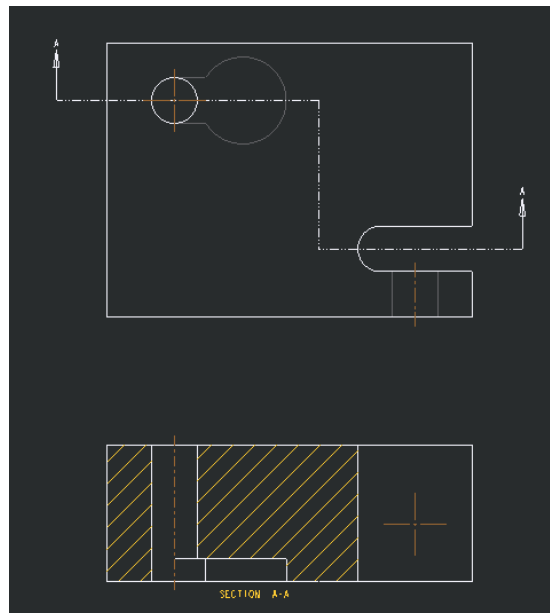
6. Final View Layout

- a. Adjust Cutting Plane Arrows, Letter and Section Text based on the Full Section Tutorial

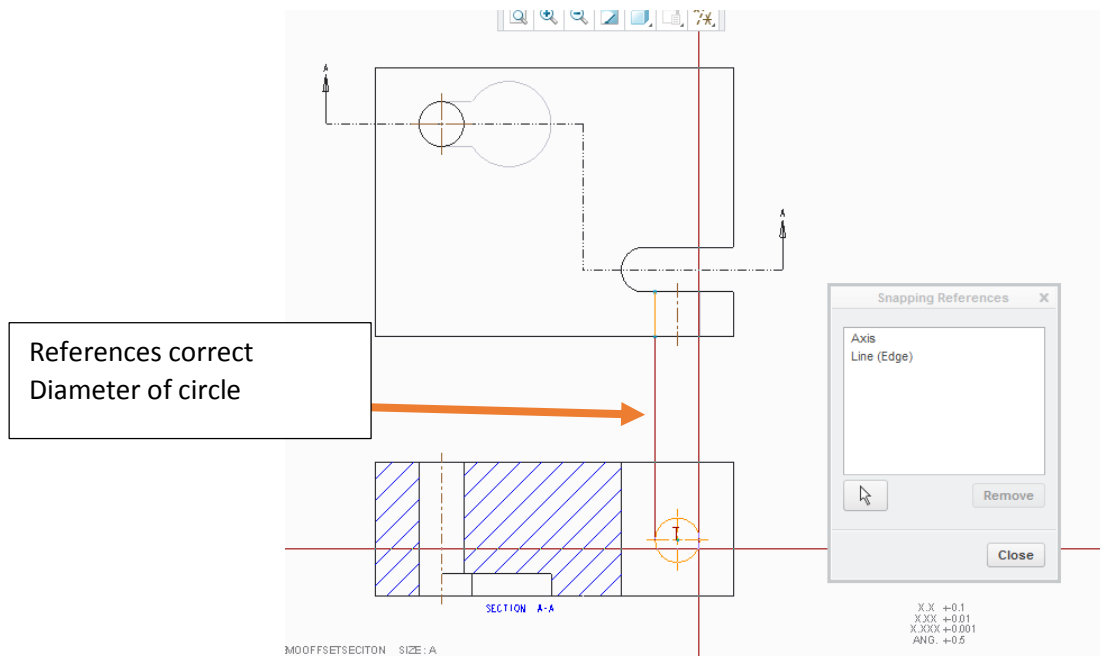
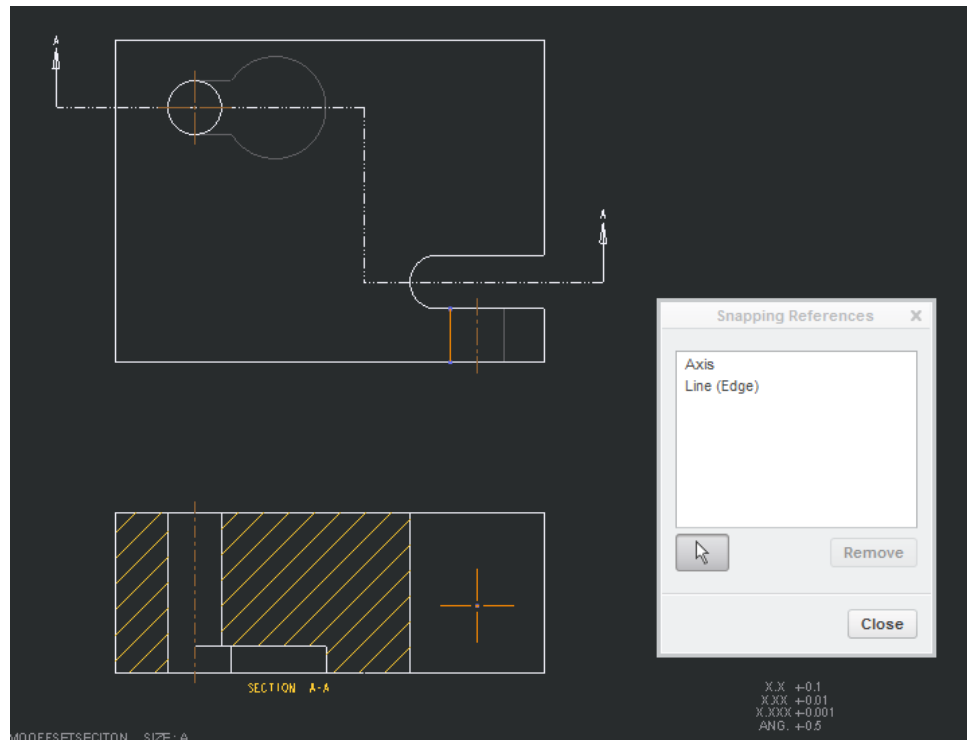


7. Layout of Section > Setup layout same as Full Section

- a. Check views to ensure that all features are shown. On our part a hole has been removed that does not show up on any other views. We will sketch this hole in
- b. Place center lines for all views. Be careful that only centerlines of shown features is selected



8. Go to Sketch Tab > Select Circle Tool > From Snapping Pop Menu Select Arrow Reference > Select the Center Line and one of the hidden lines from the top view that represent the Circle > Middle Mouse Button to deactivate the reference tool > Place Cursor at center of centerline cross in the front view place circle > With Circle selected Reference circle to View.



9. Print Final Layout and turn in.