



Board of Education, Regular Meeting
Monday, July 11, 2022
7:00 PM
BECC Building
125 S. Church Street
Brighton, MI 48116

I. Call to Order

II. Pledge of Allegiance

III. Roll Call

IV. Approval of Agenda

V. Superintendent Report

VI. Call to the Public

VII. For Action

- A. Regular Minutes of June 13, 2022.
- B. Special Minutes of June 20, 2022.
- C. Human Resources Report.
- D. Security officers for Elementary.

Report 22-82
Report 22-83
Report 22-84
Report 22-85

Page 2
Page 6
Page 10
Page 11

VIII. For Future Action

- A. Health Occupations, Virtual Anatomy table.

Report 22-86

Page 12

IX. Closed Session

- A. Negotiations, 8 (c) collective bargaining

Page 47

X. Next Regular Meeting, Monday, August 8, 2022 at 7PM.

BRIGHTON AREA SCHOOLS
Board of Education
July 11, 2022

Report #22-82

For Action

Subject:

Board of Education Meeting Minutes

Recommendation:

That the Board of Education approve the regular meeting minutes as presented.

Rationale:

Facts/Statistics:

District Goal Addressed:

☒ Communication
☐ Fiscal Integrity
☐ Student Achievement

Motion

Moved by:

Supported by:

To approve the meeting minutes of June 13, 2022 as presented.

Voice Vote:

☐ Ayes
☐ Nays



Board of Education
Brighton Area Schools
Regular Meeting
125 S. Church Street, Brighton MI 48116
Monday, June 13, 2022
7:00PM

Minutes

I. Call to Order

Vice President Stahl called the meeting to order at 7:01PM.

II. Pledge of Allegiance

Vice President Stahl led the board in the pledge of allegiance.

III. Roll Call

Members present: Ken Stahl, Vice, Dr. Angela Krebs, Secretary, Laura Mitchell, Treasurer, John Conely, Trustee and Alicia Reid, Trustee 2 absent - Roger Myers, President and Bill Trombley, Trustee Also present: Dr. Matthew Outlaw, Superintendent of Schools, Michael Engelter, Assistant Superintendent of Finance, Dr. Liz Mosher, Assistant Superintendent of Curriculum, Chad Scaling, Executive Director of Human Resources and Starr Acromite, Recording Secretary, staff, press and visitors.

IV. Approval of Agenda

Motion: To approve the agenda and amend it to move Action item D. Student handbooks to future action item D.

Moved by: Reid

Supported by: Conely

Voice vote: 5 ayes, 2 absent – Myers and Trombley.

V. Superintendent Report

A. Shining Star recognition – The following groups received “Shining Star” recognition; Brighton High School, DEI Club, Auto Program, Senior Survivor and the Football program.

B. Retirement Recognition – The following staff were honored for retirement; Chris Cote, Jeri-Kay Thomas, Lin Vollmer, Tammy Ritter, Lisa Carpenter, Amy McCarthy, Pam Kilpatrick and Jennifer Sprys-Tellner.

C. School Security – Dr. Outlaw asked for consensus to bring in a representative to discuss safety and security and to include it for future action on June 20.

VI. **Call to the Public**

Nick Shelton addressed the board and thanked them for the discussion on transparency.

VII. **For Action**

A. Motion: To approve the regular meeting minutes of May 9, 2022 as presented.

Moved by: Krebs

Supported by: Mitchell

Voice vote: 5 ayes, 2 absent – Myers and Trombley.

Motion carried.

B. Motion: To approve the special meeting minutes of May 23, 2022 as presented.

Moved by: Krebs

Supported by: Mitchell

Voice vote: 3 ayes, 2 absent – Myers and Trombley and 2 abstentions – Stahl and Reid.

Motion carried.

C. Motion: To approve the Human Resources report as presented.

Moved by: Reid

Supported by: Mitchell

Voice vote: 5 ayes, 2 absent – Myers and Trombley.

Motion carried.

~~D. Motion: To approve the handbook revisions for all 3 levels – Intermediate, Middle and High school as presented.~~ ***This item moved to future action.***

~~Moved by:~~

~~Supported by:~~

~~Voice vote:~~

~~Motion carried.~~

E. Motion: To approve the appointment of Katie Morningstar as Brighton's representative to the LESA PAC through June 30, 2023 as presented.

Moved by: Reid

Supported by: Krebs

Voice vote: 5 ayes, 2 absent – Myers and Trombley.

Motion carried.

F. Motion: To adopt the Strategic plan 2022-2027 as presented.

Moved by: Reid

Supported by: Mitchell

Voice vote: 5 ayes, 2 absent – Myers and Trombley.

Motion carried.

VIII. For Future Action

A. MHSAA Resolution - The Michigan High School Athletic Association Membership Resolution will be presented on the next agenda for board consideration.

B. Field trip, International – Brighton High Schools has a field trip request for an international trip to Ecuador and Galapagos Islands for June 2023 for board consideration on the next agenda.

C. Budget Hearing – The Public Hearing will be held at 6:30 p.m. on Monday, June 20, 2022 at BECC Building, 125 S. Church Street, Brighton, MI 48116. The hearing is held to give the public the opportunity to comment on the proposed 2021-22 and 2022-23 budgets.

D. Handbook revisions – Intermediate, Middle and High schools were presented for board discussion.

**IX. Next Meeting Special meeting Monday, June 20, 2022 at 6:30PM.
Next Meeting Regular meeting Monday, July 11, 2022 at 7:00PM.**

X. Adjournment

Vice President Stahl adjourned the meeting at 8:37 p.m.

BRIGHTON AREA SCHOOLS
Board of Education
July 11, 2022

Report #22-83

For Action

Subject:

Board of Education Meeting Minutes

Recommendation:

That the Board of Education approve the special meeting minutes as presented.

Rationale:

Facts/Statistics:

District Goal Addressed:

☒ Communication
☐ Fiscal Integrity
☐ Student Achievement

Motion

Moved by:

Supported by:

To approve the meeting minutes of June 20, 2022 as presented.

Voice Vote:

☐ Ayes
☐ Nays



Board of Education
Brighton Area Schools
Special Meeting
125 S. Church Street, Brighton MI 48116
Monday, June 20, 2022
6:30PM

Minutes

I. **Call to Order**

President Myers called the meeting to order at 6:31 PM.

II. **Pledge of Allegiance**

President Myers led the board in the pledge of allegiance.

III. **Roll Call**

Members present: Roger Myers, President, Ken Stahl, Vice President left the meeting at 8:18PM, Laura Mitchell, Treasurer, John Conely, Trustee and Bill Trombley, Trustee 2 absent – Dr. Angela Krebs and Alicia Reid. Also present: Dr. Matthew Outlaw, Superintendent of Schools, Michael Engelter, Assistant Superintendent of Finance, Dr. Liz Mosher, Assistant Superintendent of Curriculum, Chad Scaling, Executive Director of Human Resources and Starr Acromite, Recording Secretary, staff, press and visitors.

IV. **Approval of Agenda**

Motion: To approve the agenda and amend it to include Action item A. June 13, 2022 minutes to move future action item B and add item C. Board reports.

Moved by: Mitchell

Supported by: Stahl

Voice vote: 5 ayes, 2 absent – Reid and Krebs.

V. **Superintendent Report**

A. Shining Star recognition – The following athletic teams received “Shining Star” recognition; Boy’s and Girl’s Track and Field, Boy’s Golf and Girl’s Lacrosse.

B. Budget Hearing - Budget Hearing/The Public Hearing was held at 6:45 p.m. The hearing was held to give the public the opportunity to comment on the proposed 2021-22 and 2022- 23 budgets. The Public Hearing was closed at 7:20 p.m. There were no public comments provided.

C. School Security – Superintendent Outlaw brought a proposal to have retired police officers in each elementary building. Premier Security discussed school safety program offerings and answered questions from the board.

VI. **Call to the Public**

There were no comments offered to the board.

VII. **For Action**

~~A. Motion: To approve the regular meeting minutes of June 13, 2022 as presented.~~ ***This item moved to Future Action item B.***

~~Moved by:~~

~~Supported by:~~

~~Voice vote:~~

~~Motion carried.~~

B. Motion: To approve the 2021-22 amended budget as presented

Moved by: Stahl

Supported by: Mitchell

Voice vote: 5 ayes, 2 absent – Reid and Krebs.

Motion carried.

C. Motion: To approve the 2022-23 projected budget as presented.

Moved by: Mitchell

Supported by: Conely

Voice vote: 5 ayes, 2 absent – Reid and Krebs.

Motion carried.

D. Motion: To approve the Human Resources report as presented.

Moved by: Stahl

Supported by: Mitchell

Voice vote: 3 ayes, 2 nays – Conely and Trombley, 2 absent – Reid and Krebs.

Motion carried.

E. Motion: To approve the handbook revisions for all 3 levels – Intermediate, Middle and High school as presented.

Moved by: Stahl

Supported by: Conely

Voice vote: 5 ayes, 2 absent – Reid and Krebs.

Motion carried.

F. Motion: To adopt the MHSAA resolution as presented.

Moved by: Stahl

Supported by: Trombley

Voice vote: 5 ayes, 2 absent – Reid and Krebs.

Motion carried.

G. Motion: To approve the international field trip to Ecuador and Galapagos Islands as presented.

Moved by: Mitchell

Supported by: Stahl

Voice vote: 5 ayes, 2 absent – Reid and Krebs.

Motion carried

VIII. **For Future Action**

A. Safety and Security – This item will be on the July 11, 2022 for action.

B. Regular Minutes of June 13, 2022- This item will be on the July 11, 2022 for action.

C. Board Reports- Trustee Conely announced student opportunities for the Army National Guard Program, noted information on structure, school code and policy for board committees and requested for this to be added into the minutes. Also, Mr. Conely inquired about BAS ownership and maintenance on a property. Trustee Trombley mentioned Graduation and the senior all night party.

IX. **Next Meeting Regular meeting Monday, July 11, 2022 at 7:00PM.**

X. **Adjournment**

President Myers adjourned the meeting at 8:30 p.m.



Human Resource Report

Human Resources presents for your consideration the following human resources changes including resignations, new hires and changes in tenure status:

RETIREMENTS / RESIGNATIONS / TERMINATIONS:

<u>NAME</u>	<u>BLDG./DEPT.</u>	<u>ASSIGNMENT</u>	<u>STATUS</u>	<u>REASON</u>	<u>EFFECTIVE</u>

TRANSITIONS/NEW HIRES:

* Pending completion of district hiring process and successful completion of criminal history screening process

<u>NAME</u>	<u>BLDG./DEPT.</u>	<u>ASSIGNMENT</u>	<u>STATUS</u>	<u>EFFECTIVE</u>
Molly Singles	Hilton Elementary School	4th Grade	New Hire	9/1/22
Meagan DeLuca	Hawkins Elementary School	2nd Grade	New Hire	9/1/22
Kimberly-Blanton-Ball	Spencer Elementary School	4th Grade	New Hire	9/1/22
Meagan George	Brighton High School	Special Education	New Hire	9/1/22
Roderick Beaton	Brighton High School	Socail Studies	New Hire	9/1/22
Ryan Garrison	Brighton High School	Socail Studies	New Hire	
Nathan Grabowski	Brighton High School	Grade-Level Principal	Transition	8/1/22
Tracie Richards	Brighton High School	Grade-Level Principal	Transition	8/1/22

BRIGHTON AREA SCHOOLS
Board of Education
July 11, 2022

Report #22-85

For Action

Subject:

Security officers for elementary

Recommendation:

Rationale:

Facts/Statistics:

District Goal Addressed:

- ☒ Communication
- ☐ Fiscal Integrity
- ☐ Student Achievement

Motion

Moved by:

Supported by:

To approve security officers for elementary as presented.

Voice Vote:

- ☐ Ayes
- ☐ Nays

BRIGHTON AREA SCHOOLS
Board of Education
July 11, 2022

Report #22-86

For Future Action

Subject:

Health Occupations, Virtual Anatomy table

Recommendation:

Rationale:

Facts/Statistics:

District Goal Addressed:

- ☒ Communication
- ☐ Fiscal Integrity
- ☐ Student Achievement

Motion

Moved by:

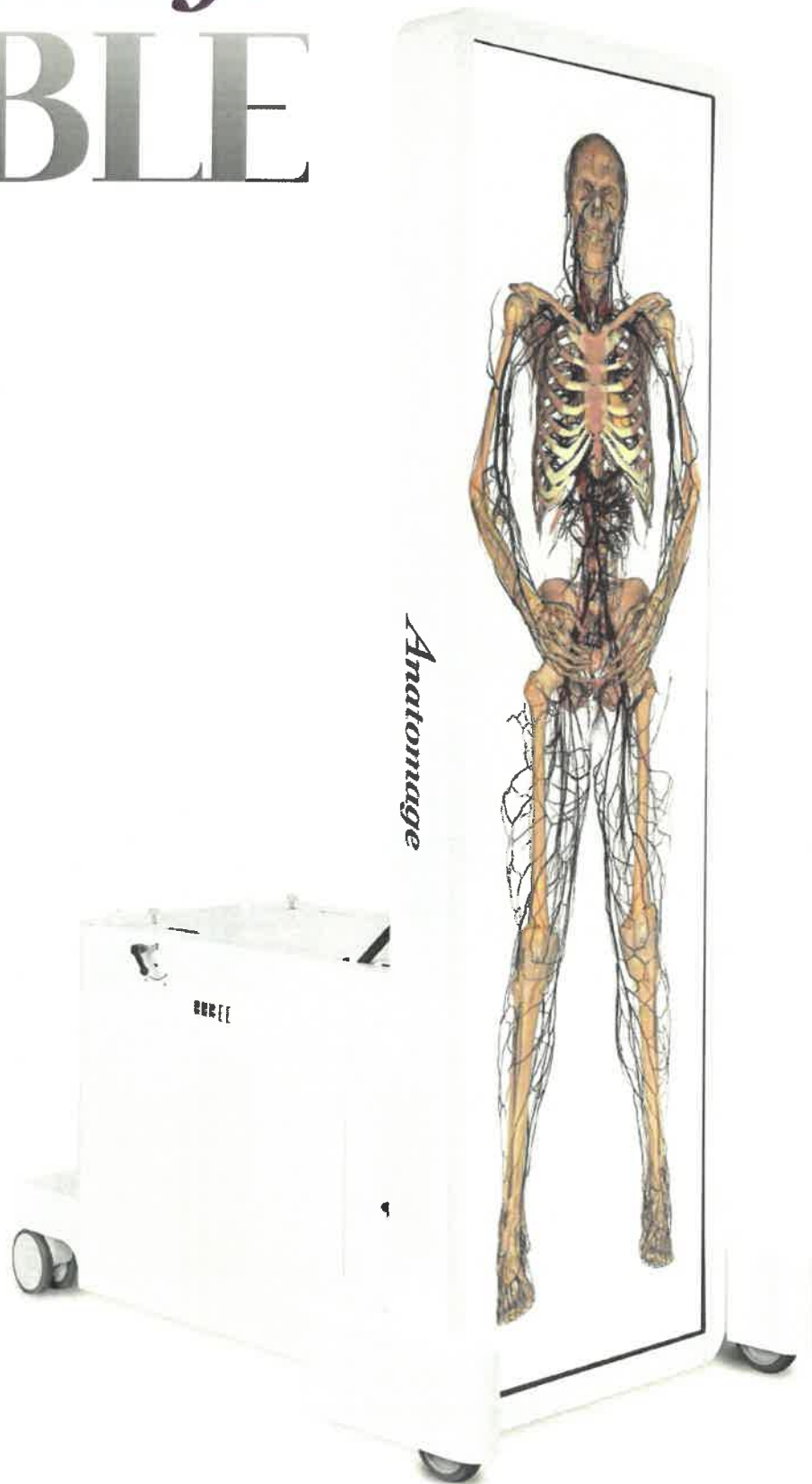
Supported by:

To approve the health occupations, virtual anatomy table as presented.

Voice Vote:

- ☐ Ayes
- ☐ Nays

Anatomage TABLE



WHY THE ANATOMAGE TABLE?

The Anatomage Table is the most technologically advanced virtual dissection table for anatomy education. The Table's life-sized display, clinical content, and renowned imaging software separates the Table from any other anatomy education tool on the market.

ADVANCED EDUCATIONAL TOOL

The accuracy of real human anatomy and quantity of clinical cases are unique aspects of the Anatomage Table. The Table includes ultra-high quality (UHQ) visualization for students to view photorealistic anatomical structures. Research has proven that working with the Table improves student retention and test scores.

TECHNICAL SHOWCASE

The Anatomage Table features highly advanced technology that draws attention from visitors as well as students and faculty. The Table will quickly become the technological centerpiece at your institution that sets you apart from other institutes.

CLINICAL CARE REVIEW

Beyond anatomy education, the Table's application extends to clinical planning and consultation. The Anatomage Table is FDA cleared for use in assisting medical diagnosis. It can be utilized as a powerful radiology workstation and as a valuable tool for surgical case review, patient consultation, and medical research.

COST REDUCTION

Unlike cadavers, the Anatomage Table does not require ventilation infrastructure, embalming equipment, personnel, or storage. The contents are reusable, so there are no recurring acquisition costs. The product will save significant costs over the long term.

CLEAN & SAFE

The Anatomage Table offers a high-quality lab experience without any chemicals. There are no possibilities of leaks, no environmental concerns, and no additional ventilation requirements. The product provides headache free lab sessions.

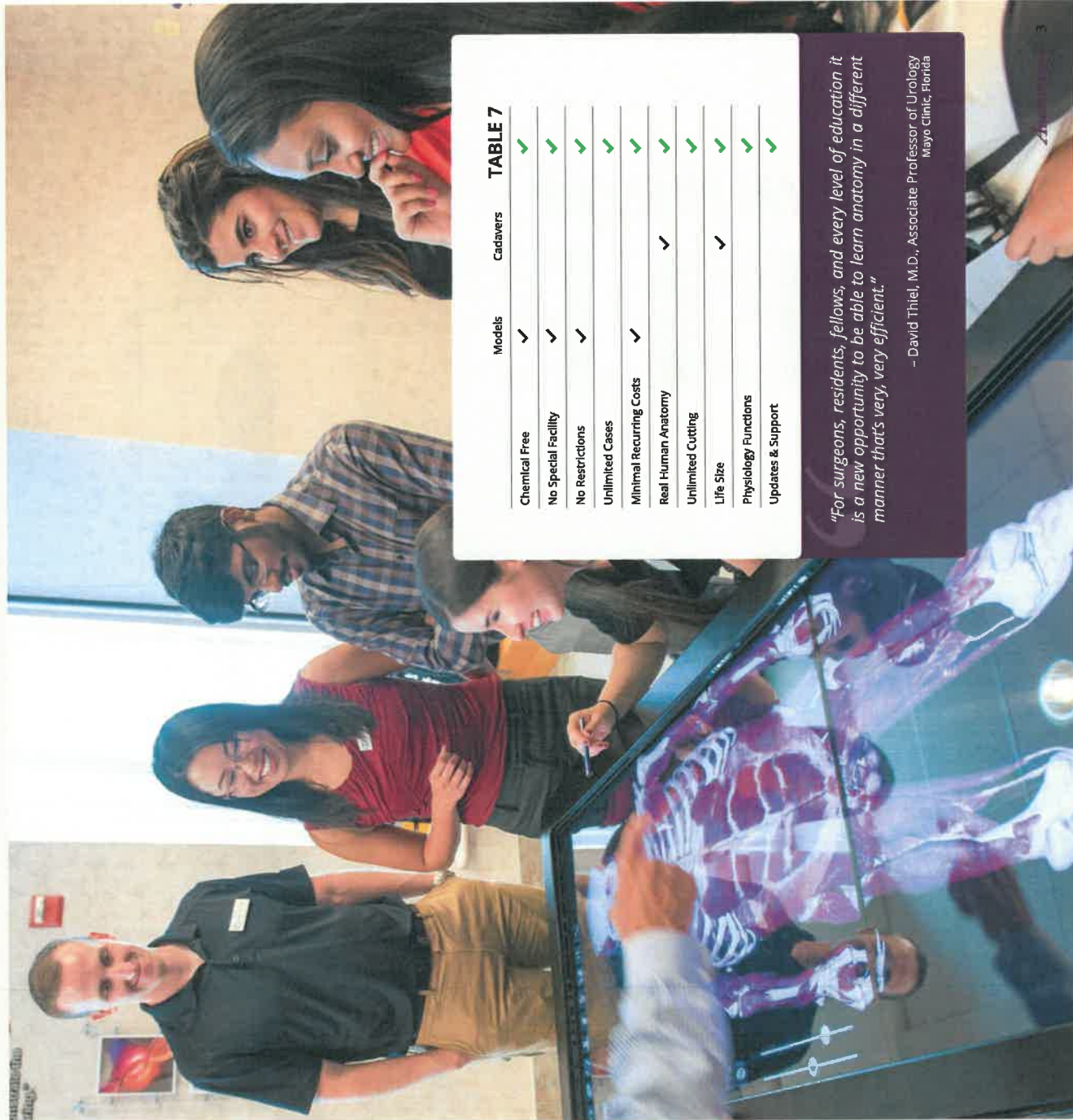


TABLE 7

	Models	Cadavers
Chemical Free	✓	✓
No Special Facility	✓	✓
No Restrictions	✓	✓
Unlimited Cases	✓	✓
Minimal Recurring Costs	✓	✓
Real Human Anatomy		✓
Unlimited Cutting		✓
Life Size		✓
Physiology Functions		✓
Updates & Support		✓

"For surgeons, residents, fellows, and every level of education it is a new opportunity to be able to learn anatomy in a different manner that's very, very efficient."

- David Thiel, M.D., Associate Professor of Urology
Mayo Clinic, Florida

APPLICATIONS

LECTURE

The Table can be used during lectures since it can connect to projectors. Instructors can create and demonstrate procedural material, making lectures more dynamic and engaging. Screen captures and video clips can be easily saved and shared with students as review material. Running a full lecture with the Table turns a traditional, difficult class into an exciting, highly interactive one.



FULL LAB REPLACEMENT

The Anatomege Table is sufficient to cover the full anatomy class. High accuracy and rich contents offer an excellent replacement to traditional cadaver-based dissection. The Table simplifies complex anatomical information to increase subject retention and ease the learning process. Since the data preserves the real-life patient color and shape, the Table is more effective than embalmed cadavers.



VIRTUAL MEDICAL LAB

The Anatomege Table can be used in conjunction with existing cadaver dissections. Each of the 4 cadavers is segmented with high accuracy and have been preserved with their individual pathological details. Our cadavers can be sliced multiple times in any orientation and each anatomical structure can be separated and reviewed individually. Student assessment and curriculum creation are easily accomplished through the use of the Anatomege Table.



CLINICAL CASE REVIEW

Utilizing the Anatomege Table, real patient clinical cases can be reviewed and rendered in full 3D and associated 2D slicing. Through the Table's clinical case library, users can compare healthy and unhealthy structures, view structural relationships, and visualize rare and unique pathologies. Students have the opportunity to dissect reconstructions and cross-sectional planes of clinical cases. Students can review in collaborative groups to perform dissections and answer questions.



PRE-SURGICAL PLANNING DEVICE

A strong pathological and procedural training tool, the Anatomege Table's features are derived from an FDA cleared surgical planning software that enables surgeons and doctors to upload patient scans and model them into 3D images. This allows for virtual operation on human anatomy, assisting them in outlining surgical procedures without relying on physical cadavers.



PATIENT CARE

Visualization and comprehension of clinical procedures is easier for patients when viewing their anatomy in 3D color as opposed to 2D black and white slices. In addition, simulation content is available for supporting doctors in the diagnostic process. With this technologically impressive visual consultation, patient care and safety will be improved further.



FORENSIC & VIRTUAL AUTOPSY

CT scanning is increasingly popular in the field of forensics and archaeology. The Anatomege Table had a crucial role in the historical investigation of Pharaoh Tutankhamun's cause of death, documented by Fuji TV and PBS in August 2012, and by STV and BBC in October 2014. The Table's forensic autopsy applications were also positively reviewed in a 2013 Scientific American article. Most recently, Anatomege Table was also featured in a popular documentary Jack The Ripper from BBC in April 2019.



VETERINARY USAGE

The Table is an ideal instrument for veterinary professionals. Compare the anatomy of different animals for education or research, load your own veterinary scans for instruction or case planning, and study animal anatomy.



CONTENTS

GROSS ANATOMY CONTENTS

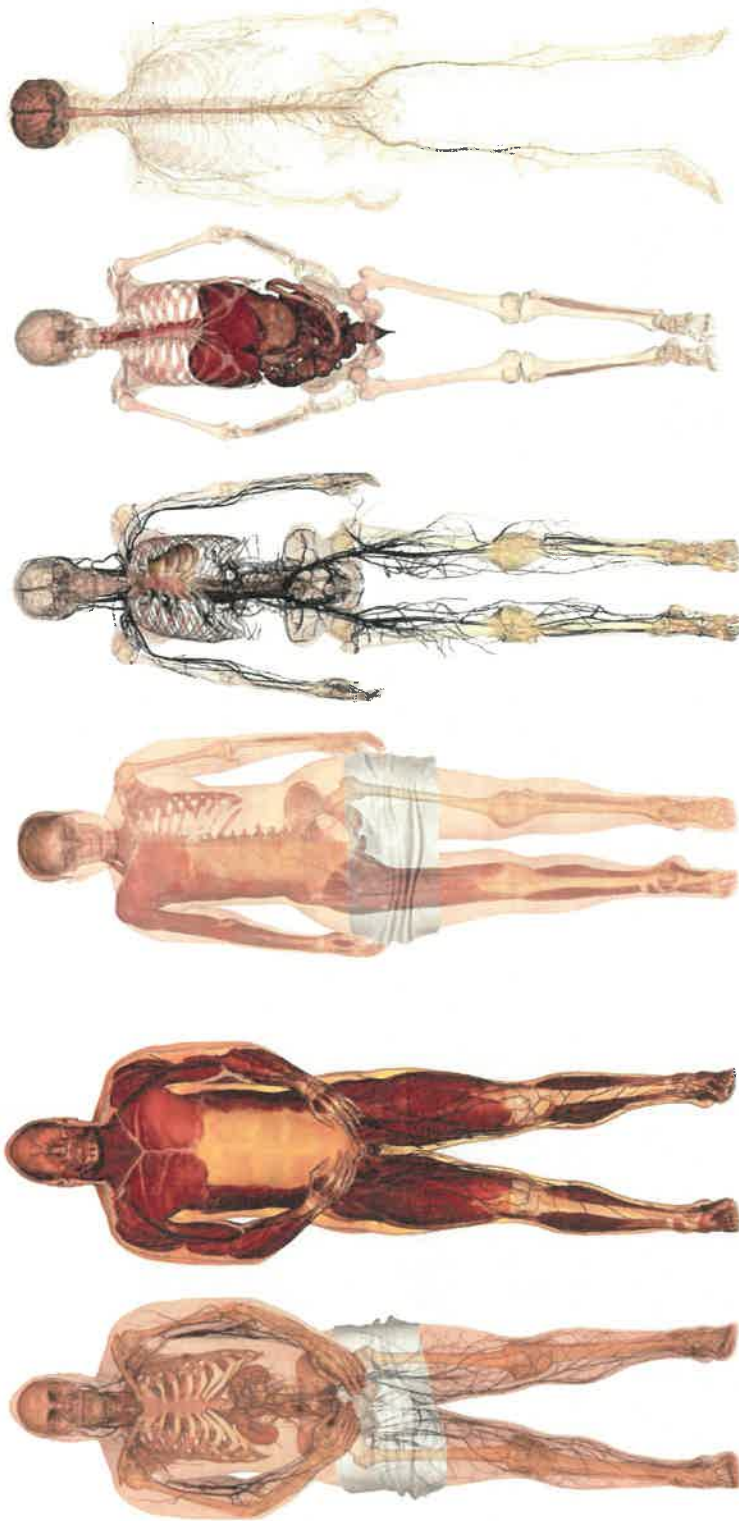
The Table contains both life-sized male and female gross anatomy. Including multiple full-body cadavers ensures that students are exposed to anatomical variations. External and internal anatomy is volumetrically displayed from head to toe and includes thousands of annotated structures. The images are created by digitally tracing real non-chemically treated cadavers. The color and shape of the cadavers are preserved to accurately depict real anatomy.

The virtual body can be cut layer-by-layer and users can make certain structures transparent to view surrounding anatomy. Students can clearly visualize cardiovascular, nervous, and muscular structures. Additionally, blood flow can be vividly animated for any artery or vein in the cadavers.

REGIONAL ANATOMY CONTENTS

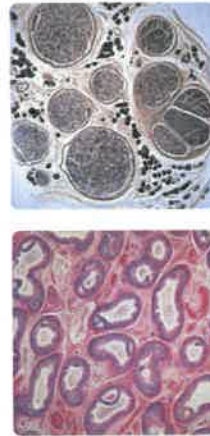
The Table includes high-resolution 3D regional anatomy up to 0.2mm. The regional scans cover the entire body and allow for students to visualize detailed structures such as nerves or blood vessels that are difficult to see by any other means.

Users are provided with an in-depth view of major structures in the body such as the heart, lungs, abdomen, and pelvis that might be difficult to see on a full body cadaver. The Table's features allow users to easily toggle systems on and off to view specific anatomical structures. The structures can be rotated or zoomed in on for detailed 3D visualization of the body's regional anatomy.



HISTOLOGY SCANS

The image library includes a variety of microscopic histology scans. Students can examine microscopic tissue structures and cell-specific biomarkers from a collection of accurately stained digital scans. The cell and tissue scans include healthy and abnormal clinical cases from across the body. Viewing histology cases offers students a well-rounded study of anatomy and pathology.



PROSECTIONS

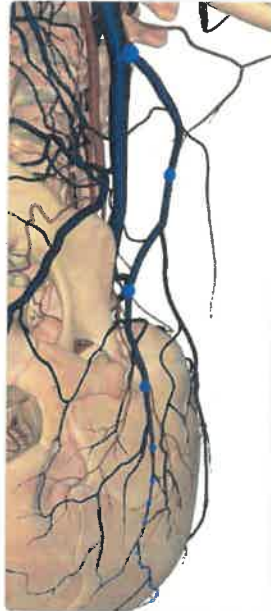
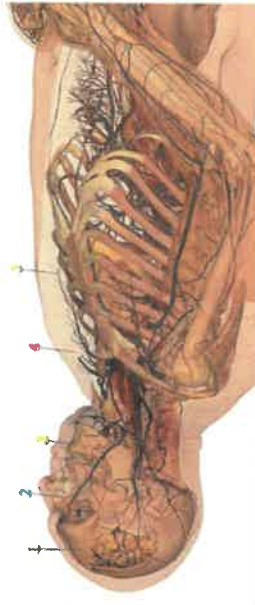
The Table provides medical school level anatomy content with access to 60 photorealistic prosections. The Table contains a wide range of 3D cadaver prosections highlighting images from various regions of human anatomy and case examples for normal and pathological tissue. Detailed annotations of the regions are available for all prosection images. Users can also customize the prosections' annotations.



FEATURES

INTERACTIVE DISSECTION

The Table offers unique interactive dissection tools with thousands of anatomical structures segmented and annotated for both male and female cadavers. With the touchscreen, users can rotate structures, make multiple cuts, and undo any cut instantly. Any anatomical structure or system can be easily identified.

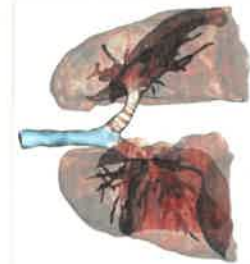
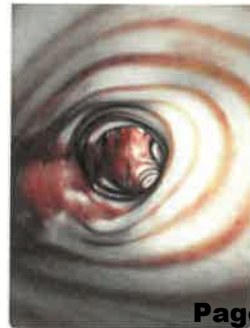


BLOOD-FLOW SIMULATION

The Table highlights the movement of blood throughout the human body. With the touchscreen, users can select any artery or vein and visualize blood flow toward or away from the heart. The selected pathway can be quickly annotated and colored to emphasize the anatomical structures involved.

VIRTUAL ARTHROSCOPY

The Table simulates an arthroscopic procedure by visualizing anatomy within any joint of the cadaver. During this visualization, users can easily identify and further dissect any structure. The virtual arthroscopy reinforces 3D spatial relationships and is an effective tool for medical training.



FLYTHROUGH SIMULATION

The Table provides a unique tool to visualize internal cavities throughout a real cadaver. The Table links 3D gross anatomy to laparoscopic internal views within cavities of the body. With this tool, users can simulate procedures through the respiratory tract, gastrointestinal tract, and chambers of the heart.

GROUP & SELF ASSESSMENTS

Instructors can create material for quizzes and practicals on the Table. The Table comes equipped with a Quiz Mode that enables teachers with an advanced tool for student assessments and collaboration through the use of flashcards or a more traditional anatomy identification exam. Instructors can export roster directly from a student roster for analysis.



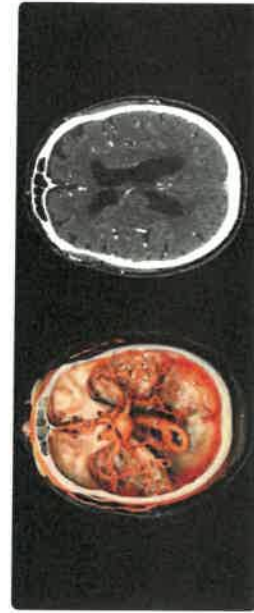
ORIGINS & INSERTIONS

The Table provides in-depth details for origin and insertion points on skeletal bones. Origin and insertion surfaces can be highlighted on every cadaver to represent the relationship between the skeletal and muscle systems. Bone landmarks can be annotated and identified.



RADIOLOGY WORKSTATION

The Table functions as a complete radiology workstation and loads DICOM data such as CT and MRI scans. The Table integrates with PACS for clinicians to load images as 2D radiological slices and 3D reconstructions. Whether using the library images or your own medical scans, the Table delivers full 3D anatomy.



DIAGNOSTIC TOOL

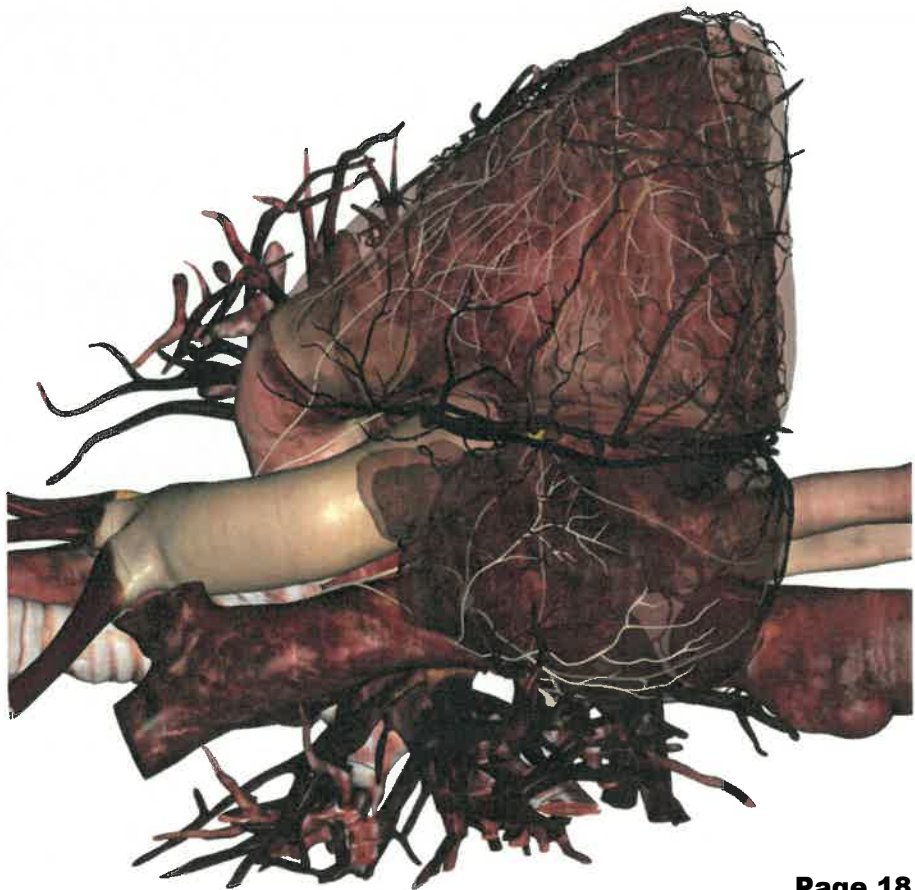
The Table is an FDA Cleared diagnostic tool designed to render patients scans in 3D and enable physicians to assess the patient. With the Table's numerous dissection tools, physicians can virtually dissect patients and isolate afflicted areas to render a more accurate decision for treatment.



FEATURES

HEART MOTION SIMULATION

The Table enables heart motion simulation on a digital cadaver. Tapping on the Heart Motion tab, users can simulate a beating heart on the cadaver. A digital ECG can be used to adjust the heart rate, allowing users to monitor the heart's electrical activity on a graph. This simulation tool will enhance your medical training curriculum, delivering an innovative approach for the human cardiovascular study.



PHYSIOLOGICAL PATHWAYS

The Table enables users to visualize 11 physiological pathways. From the air pathway during inhalation and exhalation to GI contrast, to blood flow, users are enabled to visualize how a subject is passed through internal organs or veins inside a human body. Users can use color to highlight any structures to map out a specific physiological pathway.



CATHETER SIMULATION

The Anatomage Table includes a virtual catheter that allows users to practice different types of catheterization. The simulation tool can assist users in medical planning, from locating inserting areas to performing operations. Consisting of four different types of catheterization, the tool serves as a step-by-step guide through the procedure.



NERVE DISTRIBUTION

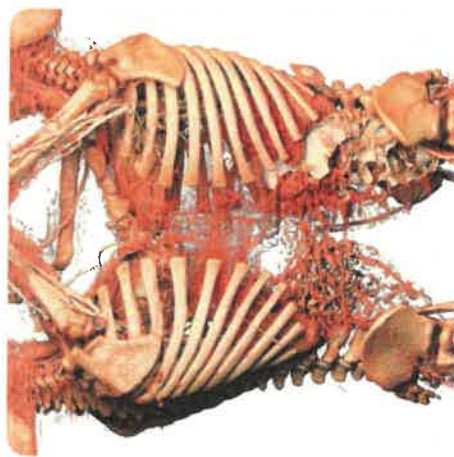
The nerve distribution allows users to explore a complex nervous system and its pathway. Containing 188 detailed dermatomes, the tool assists users in identifying which particular nerves innervate specific muscles, organs and dermatomes. The nerve pathway also makes it possible for users to examine the nerve system of the cerebral cortex, which is challenging to visualize through the naked eye.



DIGITAL ANATOMY LIBRARY

CLINICAL CASES

The Digital Anatomy Library offers over 1,300 clinical cases with a variety of visualization options and includes data from vertebrate anatomy and embryology. The Table includes scans of rare cases such as abdominal ectopic pregnancy, brain aneurysm, and conjoined twins. Students have the opportunity to view conditions that range from various bone fractures, medical implants, gunshot wounds, and more.



DIVERSE COLLECTION

For each case, users can access the original scan data, 3D image, and medical case notes. The library includes 4D scans where users can view movement such as beating hearts and respiration in real time. The library allows students to make the connection between 2D cross-sectional scan data, 3D anatomy, and 4D visualization. The variety of clinical cases ensures that students gain exposure to a wide range of pathologies.



VETERINARY CASES

Included in the Digital Library are full-body cat, dog, and mouse cadavers as well as over 150 other CT scans from various species and breeds. The full-body cat and dog have been fully segmented based on real tissue data so users can toggle individual structures on and off. Additionally, there are numerous CT scans of horses, gorillas, alligators, and even invertebrates such as earthworms and centipedes.



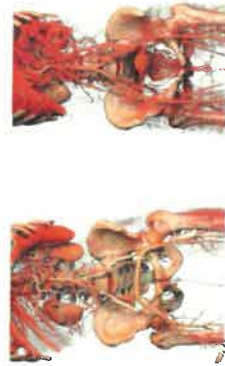
EMBRYOLOGY CONTENTS

The clinical case library contains vivid embryology content in 3D and 4D for instructors to teach human embryology. Students can view 3D embryo scans to visualize stages of human development in extreme detail. The library includes scans spanning Carnegie stages 13-23 or 28-56 days. Additionally, there is a scan of a 26 week old fetus, along with cases of a fetal brain cyst, umbilical cord cyst, and Dandy Walker syndrome.



COMPARATIVE ANALYSIS

The digital library offers comparative study cases with synchronized dissections of multiple cases. Three related cases can be viewed by the user simultaneously. Users can also create their own cases to review pre- and post-surgical scans, congenital comparisons, and cross-species evaluations. Viewing side-by-side case comparisons gives students a comprehensive visualization tool to study and review comparative anatomy.



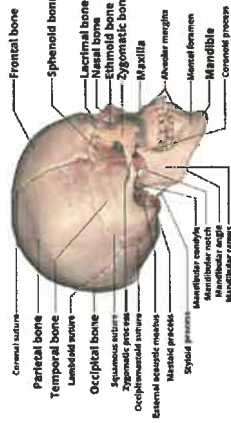
"The ability to view a large variety of CT and MRI scans is unique and infinitely useful.... Anatomy courses including identification of structures seen in cross sectional anatomy, x-ray, CT or MRI slice data, pathologies or abnormalities, anatomical variations, fractures, or cardiovascular conditions or diseases will find the Table an excellent method to both instruct and test students in these regards."

– W. Paul Brown, DDS, FICD, FACD
Stanford University, Division of Clinical Anatomy

BUILDING YOUR CURRICULUM

THE ANATOMAGE CURRICULUM

The Anatomage Curriculum features an intuitive interface for instructors to cover human anatomy by region and by system. Instructors can access a PDF file to be distributed to students and used to easily locate any anatomical region. Teach comparative, clinical anatomy using real patient data with annotated, relevantly displayed scans from the Table's library. The Curriculum is designed to make the integration of the Table into your classroom as efficient as possible.



CLASSROOM INTEGRATION

With the Table's built-in quiz mode, instructors can drop pins and create testing material for lab practicals, assignments, and examinations. The Table's video out functions ensures that it can be utilized in lecture halls through the connection to projectors, or in small groups with multiple external monitors.



DRIVE STUDENT COLLABORATION

Present customized lectures with, or give students the opportunity to, explore and lead discussions. Students can form small groups to collaborate while answering questions and take quizzes using pre-loaded cases. They also have the opportunity to discuss comparisons between normal and abnormal pathologies side-by-side.

HARDWARE SPECIFICATIONS

CONVERTIBLE



Product Dimensions

Length: 85" (216 cm)
Height: 55" (140 cm)
Height: 33.5" (85 cm)
Width: 34" (87 cm)

Weight

400 lbs (182 kg)

Display Size

84" (213 cm)

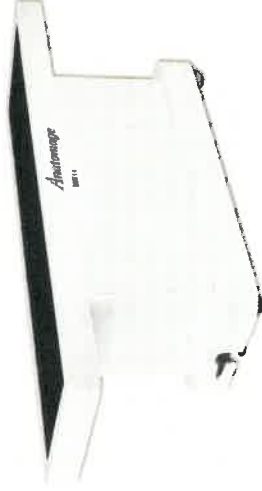
Power Supply

AC 110-250 V,
50/60 Hz, 10A

Input/Output

R/45
HDMI (x2)
USB (x3)

CLASSIC



Product Dimensions

Length: 87" (221 cm)
Height: 33" (83 cm)
Width: 28" (71 cm)

Weight

300 lbs (136 kg)

Display Size

84" (213 cm)

Power Supply

AC 100-250V,
50/60 Hz, 10A

Input/Output

R/45
HDMI (x2)
USB (x3)

WORLDWIDE INNOVATION

ANATOMAGE COMMUNITY

When you purchase an Anatomage Table you not only get all the high quality contents developed by Anatomage, but you are also part of a global community of educators and researchers who have already spent time developing their own content and ideas on how best to incorporate the Table into a wide range of curricula and disciplines.

With hundreds of Tables sold worldwide, Table users can enjoy informative annual users group meetings and developmental programs on an international scale to help ensure that the Table meets their needs. Anatomage is committed to cutting edge technology supported by an excellent team with the drive to ensure that the Table is not just a product, but rather a community of users.



INTERNATIONAL DISTRIBUTION

The Anatomage Table is used globally. Headquartered in California, Anatomage has offices in Italy and Korea to better serve our customers abroad. We have an extensive network of international distributors, a list of which can be found on our website, to offer timely service and support. Sales to countries where we have not found a representative that meets our standards are handled directly by us—we provide shipping, training, and support.

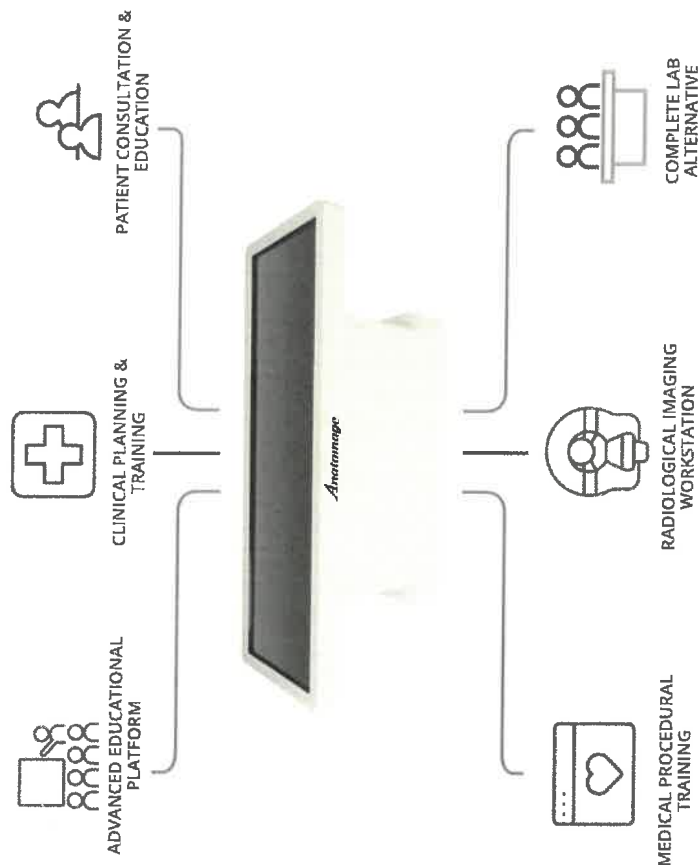
PREMIER CUSTOMER SUPPORT

Members of the Anatomage Table community can connect with our team of application engineers and specialists for full support of the product. The team is available to assist in creating content, answering questions and providing support for the Table. Anatomage is dedicated to helping you and your institution integrate the Table to its fullest extent. The team is always eager and available to provide assistance.

COMPLETE EDUCATIONAL PLATFORM

The Anatomage Table's powerful content creation tools and demonstration capabilities give users a complete platform for medical education. Numerous institutions such as medical universities, undergraduate programs, and school districts use the Table as a complete lab alternative. The Table serves as a valuable tool for clinical planning and patient consultation.

Clinicians and medical students can accurately visualize internal and surface anatomy in 3D for clinical training. The Table's ability to import scans and integrate with PACS allows for clinicians to work with patient data and learn from real clinical scenarios. Additionally, patients can be effectively informed of their condition with a 3D visual consultation on the Table.



ABOUT ANATOMAGE

For over 13 years, Anatomage has been a leading medical device company driving innovation in the healthcare industry. Anatomage's advanced solutions are being used in tens of thousands of clinics, hospitals, and other institutions in the US and internationally. Our products include medical tables, image-guided surgical devices, surgical instruments, radiology software, and imaging equipment.

Anatomage products are developed, designed, and manufactured following strict FDA guidelines for medical devices. Anatomage continues to establish exclusive partnerships with renowned educational institutions and medical equipment companies. Our cutting-edge and unique products have been featured numerous times in journals, publications, and the media, including: TED Talks, BBC, CBC, Japanese Fuji TV, and PBS.

Located at the heart of Silicon Valley, Anatomage is a fast-growing company that continues to thrive in a place where technology is ingrained in the culture. The company encourages the building of a diverse and positive culture and recruits top talent. Anatomage's work environment is defined by our highly talented biologists, medical specialists, and engineers who strive to create high-tech products that continue to push industry standards. Anatomage maintains strong ties with world-leading instructors and researchers by building successful partnerships at prominent institutions.

With our revolutionary family of products, we aspire to advance medical education and improve patient care throughout the healthcare industry.

The logo for Anatomage, featuring the word "Anatomage" in a stylized, italicized serif font. The letters are a dark purple or maroon color.



Product Comparison

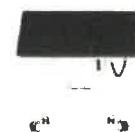


Table (Convertible)

Table (Classic)

Table Clinical

Table Alpha

Lifesize Full Body Display	✓	✓	X	X
Adjustable Display Angle	✓	X	✓	✓
Video Output Capability	✓	✓	✓	✓
Upload & Render Medical Scans	✓	✓	✓	✓
PACS Compatibility	✓	✓	✓	X
Ultra High Quality filters for CT & MRI	✓	✓	✓	X
Anatomical Radiology Curriculum	✓	✓	✓	✓
High Resolution Regional Data	✓	✓	✓	X
Physiology	✓	✓	✓	✓
Number of Full Body Cadavers	4	4	4	2
Number of Case Files	1,250	1,250	1,250	443
Prosection Scans	57	57	57	X
Number of Histology Slides	862	862	862	862

BRIGHTON AREA SCHOOLS
Board of Education
July 11, 2022

For Information

Finance:

1. Bills for payment of June 17 – June 30, 2022.

Check Register

CheckNo	CkDate	Vendor	Name	PO #	Account	Description	Amount	CheckAmt
REGULAR CHECKS								
026557	06/17/2022	13181	BC TECHNOLOGIES CO	33684 C	11-293-7410-000-0000	SETUP FEE	1,000.00	1,000.00
026558	06/17/2022	06932	BLUE LAKES CHARTERS & TOURS	33682 C	11-293-4920-000-0000	BBALL BUS	614.80	
				33683 C	11-293-5992-000-200-0000	GLAX BUS	1,064.65	1,679.45
026559	06/17/2022	13116	CHGC	33688 C	21-296-7920-031-000-0000	WHITE LINENS	520.00	520.00
026560	06/17/2022	09670	CITY OF BRIGHTON	33731 C	11-249-5910-031-000-0000	GRAD SECURITY	3,047.99	3,047.99
026561	06/17/2022	09800	CJC CRUISES		21-296-7920-021-000-0000	PRINCESS CRUISE 6/14	13,890.00	13,890.00
026562	06/17/2022	10785	CONSUMERS ENERGY		11-261-5510-006-000-0000	HILT GAS 4/27-5/26	321.58	
					11-261-5510-031-000-0000	BHS GAS 4/29-5/27	2,163.59	
					11-261-5510-031-000-0000	CONCESS GAS 4/29-5/2	129.80	2,614.97
026563	06/17/2022	13179	D&D MACHINERY MOVERS	33698 C	11-261-4110-000-000-0000	LOAD/UNLOAD TRUCK	1,700.00	
				33697 C	11-261-4110-000-000-0000	RELOCATE MACHINERY	1,350.00	3,050.00
026564	06/17/2022	13131	GANZCORP INVESTMENTS	33069 C	11-127-6410-031-550-3440	DYNAMOMETER	57,385.00	57,385.00
026565	06/17/2022	31520	HYDRO CHEM LABORATORIES	33696 C	11-261-4122-000-000-0000	SERVICE CALL	150.00	150.00
026566	06/17/2022	35030	DANCE TEAM UNION	33727 C	21-296-5991-000-012-0000	UNITY CAMP	10,302.00	10,302.00
026567	06/17/2022	13161	L&W SUPPLY CO	33718 C	11-261-5992-000-000-0000	CEILING TILES	6,875.37	6,875.37
026568	06/17/2022	13137	LINDE GAS & EQUIPMENT		11-127-5110-031-550-3440	AUTO GAS OLD INVOICE	168.14	168.14
026569	06/17/2022	37663	LIVINGSTON CTY SHERIFF		11-266-3190-000-000-0000	SRO CONTRACT MAY	7,042.75	7,042.75
026570	06/17/2022	38523	MACMILLAN HOLDINGS LLC	33485 C	11-113-5210-031-000-0000	UPD TEXTBOOKS	27,689.14	27,689.14
026571	06/17/2022	38725	SONJA MARQUIS	33689 C	21-296-7920-031-100-0000	ACTING DIRECTOR	1,000.00	1,000.00
026572	06/17/2022	46200	MITCHELL REPAIR INFORMATION CO	33678 C	11-127-5110-031-550-3440	JUNE BILLING	112.42	112.42
026573	06/17/2022	51460	OAK POINTE COUNTRY	33729 C	21-296-5991-000-018-0000	BANQUET	1,749.80	
				33685 C	21-296-5991-000-027-0000	BANQUET	4,148.00	5,897.80
026574	06/17/2022	52450	PANERA BREAD CO		21-297-5610-000-000-0000	BAGELS MAY-JUNE	8,660.29	8,660.29
026575	06/17/2022	54800	PRAIRIE FARMS DAIRY		21-297-5611-000-000-0000	MILK 5/6	4,395.47	
					21-297-5611-000-000-0000	MILK 5/11	2,182.04	
					21-297-5611-000-000-0000	MILK 5/19	3,950.37	
					21-297-5611-000-000-0000	MILK 5/27	3,770.56	
					21-297-5611-000-000-0000	MILK 6/2	1,374.77	15,673.21
026576	06/17/2022	13170	ROSS AND SARAH INC	33722 C	11-261-5994-000-000-0000	PUMP/FLANGE	5,955.30	5,955.30
026577	06/17/2022	13054	STAFFORD SMITH		21-297-6410-000-000-0000	COMBI OVEN BHS	19,254.00	19,254.00
026578	06/17/2022	64030	STANDARD FOOD SERV SYS		21-297-5640-000-000-0000	SANIT/SAFE SYSTEM	1,634.20	1,634.20

District: bg-Brighton Public Schools
Run Date: 6/17/2022 12:49:54PM

Check Register

CheckNo	CkDate	Vendor	Name	PO #	Account	Description	Amount	CheckAmt
026579	06/17/2022	65600	STATE DISBURSEMENT UNIT		12-451-0500-000-000-0000	SUPPORT W/H 06/17/22	61.94	61.94
026580	06/17/2022	75885	TELOCIN GROUP					
				33619 C	11-261-4110-000-000-0000	SERVICE GENERATOR	500.00	
				33701 C	11-261-4123-000-000-0000	SERVICE GENERATOR	500.00	
				33700 C	11-261-4123-000-000-0000	SERVICE GENERATOR	550.00	
				33699 C	11-261-4123-000-000-0000	INSPECT GENERATOR	200.00	
					11-261-4123-000-000-0000	SERVICE GENERATOR	550.00	2,300.00
026581	06/17/2022	83443	WALLED LAKE CONSOLID-	33521 C	21-296-7920-004-000-0000	4TH GRADE TRIP	300.00	300.00
026582	06/17/2022	84519	WASTE MANAGEMENT	33703 C	11-261-4125-000-000-0000	WASTE PICKUP/JUNE	4,753.95	4,753.95
026583	06/17/2022	84544	WATER TECH	33691 C	11-261-4122-000-000-0000	WATER TESTING	88.00	88.00
026584	06/17/2022	82160	WHOLLY HUNTER LLC	33690 C	11-127-5110-031-550-3440	SERVICE PC	618.94	618.94
026585	06/17/2022	MSC35	COLLEEN FITZGERALD		20-161-0000-000-000-0000	COLLEEN FITZGERALD	29.75	29.75
026586	06/17/2022	MSC35	DANIELLE WESTON		20-161-0000-000-000-0000	DANIELLE WESTON	10.50	10.50
026587	06/17/2022	MSC35	DARLENE WILJANEN		20-161-0000-000-000-0000	DARLENE WILJANEN	15.60	15.60
026588	06/17/2022	MSC35	DAVID WRIGHT		20-161-0000-000-000-0000	DAVID WRIGHT	18.85	18.85
026589	06/17/2022	MSC35	GAIL KRIEGER		20-161-0000-000-000-0000	GAIL KRIEGER	62.90	62.90
026590	06/17/2022	MSC35	HEIDI GALUB		20-161-0000-000-000-0000	HEIDI GALUB	28.65	28.65
026591	06/17/2022	MSC35	JAMES HARDIE		20-161-0000-000-000-0000	JAMES HARDIE	47.75	47.75
026592	06/17/2022	MSC35	JAMES IRETON		20-161-0000-000-000-0000	JAMES IRETON	98.25	98.25
026593	06/17/2022	MSC35	JANET ZARLENGAROBERT		20-161-0000-000-000-0000	JANET ZARLENGAROBERT	28.50	28.50
026594	06/17/2022	MSC35	JOHN HARRINGTON		20-161-0000-000-000-0000	JOHN HARRINGTON	26.80	26.80
026595	06/17/2022	MSC35	KAREN HANNAN		20-161-0000-000-000-0000	KAREN HANNAN	21.00	21.00
026596	06/17/2022	MSC35	LISA HOATLIN		20-161-0000-000-000-0000	LISA HOATLIN	45.50	45.50
026597	06/17/2022	MSC35	MARK WILLIAMS		20-161-0000-000-000-0000	MARK WILLIAMS	59.75	59.75
026598	06/17/2022	MSC35	MELANIE GHERARDINI		20-161-0000-000-000-0000	MELANIE GHERARDINI	59.25	59.25
026599	06/17/2022	MSC35	MONICA WOMAC		20-161-0000-000-000-0000	MONICA WOMAC	131.50	131.50
026600	06/17/2022	MSC35	REBECCA PETTY		20-161-0000-000-000-0000	REBECCA PETTY	42.50	42.50
026601	06/17/2022	MSC35	RICHELLE HOOBLER		20-161-0000-000-000-0000	RICHELLE HOOBLER	39.07	39.07
026602	06/17/2022	MSC35	STACY HALE		20-161-0000-000-000-0000	STACY HALE	17.50	17.50
026603	06/17/2022	MSC35	TODD PULTER		20-161-0000-000-000-0000	TODD PULTER	43.11	43.11
026604	06/17/2022	MSC35	VICKI WORTHING		20-161-0000-000-000-0000	VICKI WORTHING	11.25	11.25
026605	06/17/2022	MSC35	WENDY ZAGOTTA		20-161-0000-000-000-0000	WENDY ZAGOTTA	56.50	56.50
026606	06/17/2022	MSC60	ALISHA MCGRAW		21-296-7920-021-000-0000	ALISHA MCGRAW	50.00	50.00
026607	06/17/2022	MSC60	AMBER HYDE		21-296-7920-021-000-0000	AMBER HYDE	50.00	50.00

Check Register

CheckNo	CkDate	Vendor	Name	PO #	Account	Description	Amount	CheckAmt
026608	06/17/2022	MSC60	ANGELA MCBRIDE		21-296-7920-021-000-0000	ANGELA MCBRIDE	50.00	50.00
026609	06/17/2022	MSC60	EMILY DUCHARME		21-296-7920-021-000-0000	EMILY DUCHARME	50.00	50.00
026610	06/17/2022	MSC60	ERIKA WHEELER		21-296-7920-021-000-0000	ERIKA WHEELER	50.00	50.00
026611	06/17/2022	MSC60	GLEN HALL		21-296-7920-021-000-0000	GLEN HALL	50.00	50.00
026612	06/17/2022	MSC60	NIKKI FRAGOSO		21-296-7920-021-000-0000	NIKKI FRAGOSO	50.00	50.00
Sub Total:							\$202,969.34	
ACH CHECKS								
A06512	06/17/2022	00890	ADVANCE AUTO PARTS		21-296-7920-031-005-0000	AUTO ACTIVITY	280.00	280.00
A06513	06/17/2022	00930	ADVANCED WATER	33695 C	11-261-5994-000-000-0000	SOLAR SALT	146.25	146.25
A06514	06/17/2022	13121	AJD PIZZA MANAGEMENT		21-297-5610-000-000-0000	PIZZA 4/18	1,826.50	
					21-297-5610-000-000-0000	PIZZA 4/25	1,911.00	
					21-297-5610-000-000-0000	PIZZA 4/11	1,917.50	5,655.00
A06515	06/17/2022	05059	AUNT MILLIE'S BAKERIES		21-297-5610-000-000-0000	BAKED GOODS 5/9	346.78	
					21-297-5610-000-000-0000	BAKED GOODS 5/16	187.74	
					21-297-5610-000-000-0000	BAKED GOODS 5/23	567.02	
					21-297-5610-000-000-0000	BAKED GOODS 5/31	308.36	
					21-297-5610-000-000-0000	BAKED GOODS 6/6	347.97	1,757.87
A06516	06/17/2022	05080	AUTO VALUE BRIGHTON		11-127-5110-031-550-3440	AUTO SUPPLIES	36.99	
A06517	06/17/2022	10069	CLEAR RATE COMMUNICATIONS INC		21-296-7920-031-005-0000	AUTO ACTIVITY SUP	3,650.16	3,687.15
					11-261-3410-001-000-0000	HAWK PHONE JUNE	185.15	
					11-261-3410-004-000-0000	SPEN PHONE JUNE	185.15	
					11-261-3410-005-000-0000	HRNG PHONE JUNE	178.21	
					11-261-3410-006-000-0000	HILT PHONE JUNE	185.15	
					11-261-3410-021-000-0000	SCRN PHONE JUNE	256.90	
					11-261-3410-031-000-0000	BHS PHONE JUNE	810.05	
					11-261-3410-121-000-0000	MALT PHONE JUNE	259.22	
					11-261-3411-000-000-0000	TRNS PHONE JUNE	39.37	
					11-261-3412-000-000-0000	TECH PHONE JUNE	143.49	
					21-261-3410-002-000-0000	CE PHONE JUNE	185.15	2,427.84
A06518	06/17/2022	11808	D M BURR SECURITY		11-261-3150-000-000-0000	BANKCOURIER 6/3	95.45	
A06519	06/17/2022	22765	GELARDI PRODUCE CO		11-261-3150-000-000-0000	BANKCOURIER 5/27	95.45	190.90
					21-297-5610-000-000-0000	PRODUCE MAY	85.50	
					21-297-5610-000-000-0000	PRODUCE MAY	115.80	

Check Register

CheckNo	CkDate	Vendor	Name	PO #	Account	Description	Amount	CheckAmt
A06520	06/17/2022	25392	GREAT LAKES COCA-COLA		21-297-5610-000-000-0000	PRODUCE MAY	215.60	
					21-297-5610-000-000-0000	PRODUCE MAY	55.48	
					21-297-5610-000-000-0000	PRODUCE MAY	46.50	
					21-297-5610-000-000-0000	PRODUCE MAY	503.80	
					21-297-5610-000-000-0000	PRODUCE MAY	309.40	
					21-297-5610-000-000-0000	PRODUCE JUNE	26.95	
					21-297-5610-000-000-0000	PRODUCE JUNE	271.95	
					21-297-5610-000-000-0000	PRODUCE JUNE	269.50	1,900.48
A06521	06/17/2022	25615	GRIMCO INC	33704 C	21-297-5610-000-000-0000	DRINKS JUNE	1,042.04	
					21-297-5610-000-000-0000	DRINKS MAY	2,839.44	
					21-297-5610-000-000-0000	DRINKS MAY	1,304.91	
					21-297-5610-000-000-0000	DRINKS MAY	4,055.86	9,242.25
A06522	06/17/2022	27670	HERFF JONES INC	33679 C	11-282-5990-000-000-0000	GRAPHICS FILM	896.95	896.95
A06523	06/17/2022	25959	HPS, LLC		11-249-5910-031-000-0000	CERT SHIPPING	9.00	9.00
A06524	06/17/2022	34867	KENSINGTON VALLEY VARSITY	33728 C	21-297-6410-000-000-0000	2 HEAT CABINETS	8,455.86	8,455.86
A06525	06/17/2022	37640	LIVINGSTON COUNTY MECHANICAL	33694 C	21-296-5991-000-024-0000	T-SHIRTS	393.18	393.18
A06526	06/17/2022	37665	LIVINGSTON CTY TREASURER		11-261-4123-000-000-0000	HVAC CONTR SERV	1,980.00	1,980.00
					10-111-0000-000-000-6000	PROPERTY TAX ADJUST	5,200.80	
					10-111-0000-000-000-6000	PROPERTY TAX ADJUST	22,484.51	
					10-119-0000-000-000-0000	INTEREST & PENALTIES	153.76	
					30-111-1000-000-015-6000	PROP TAX ADJUST 2015	6.24	
					30-111-1000-000-015-6000	PROP TAX ADJUST 2015	26.94	
					30-111-1000-000-019-6000	PROPERTY TAX ADJUST	250.12	
					30-111-1000-000-019-6000	PROPERTY TAX ADJUST	1,081.35	
					30-111-1000-000-130-6000	PROP TAX ADJUST 2013	264.87	
					30-111-1000-000-130-6000	PROP TAX ADJUST 2013	1,145.12	
					30-111-1000-000-300-6000	PROP TAX ADJUST SLRF	1,419.50	
					30-111-1000-000-300-6000	PROP TAX ADJUST SLRF	6,136.92	
					30-111-1000-000-300-6000	PROP TAX ADJUST 2012	136.69	
					30-111-1000-000-500-6000	PROP TAX ADJUST 2012	590.97	
					30-119-0000-000-015-0000	INTEREST & PENALTIES	0.07	
					30-119-0000-000-019-0000	INTEREST & PENALTIES	2.68	
					30-119-0000-000-130-0000	INT & PENALTIES 2013	2.84	
					30-119-0000-000-300-0000	INT & PENALTIES SLRF	15.20	
					30-119-0000-000-500-0000	INT & PENALTIES 2012	1.46	38,920.04

Check Register

CheckNo	CkDate	Vendor	Name	PO #	Account	Description	Amount	CheckAmt
A06527	06/17/2022	37672	LIVINGSTON EDUCATIONAL		11-113-5110-031-038-0000	OCT TRIPS	218.88	
					11-113-5110-031-038-0000	BHS TRIPS NOV	1,168.52	
					11-113-5110-031-040-0000	BHS TRIPS MARCH	95.76	
					11-113-5110-031-040-0000	BHS TRIPS MARCH	83.88	
					11-113-5110-031-040-0000	BHS TRIPS MARCH	101.88	
					11-113-5110-031-040-0000	BHS TRIPS MARCH	113.76	
					11-113-5110-031-040-0000	BHS TRIPS MARCH	90.00	
					11-113-5110-031-040-0000	BHS TRIPS MARCH	290.88	
					11-113-5990-031-000-3490	BHS TRIPS MARCH	72.00	
					11-113-5990-031-000-3490	BHS TRIPS MARCH	119.88	
					11-113-5990-031-000-3490	BHS TRIPS MARCH	95.76	
					11-113-5990-031-000-3490	BHS TRIPS MARCH	107.00	
					11-113-5990-031-000-3490	BHS TRIPS MARCH	141.76	
					11-113-5990-031-000-3490	BHS TRIPS MARCH	146.88	
					11-127-5110-031-550-3440	BHS TRIPS MARCH	230.76	
					11-127-5110-031-573-3440	BHS TRIPS FEB	214.88	
					11-127-5110-031-573-3440	BHS TRIPS MARCH	205.88	
					21-296-0000-031-003-0000	BHS TRIPS NOV	176.76	
					21-296-0000-031-003-0000	BHS TRIPS MARCH	164.88	
					21-296-0000-031-003-0000	BHS TRIPS MARCH	110.88	
					21-296-7920-031-000-0000	BHS TRIPS DEC	182.88	
					21-296-7920-031-000-0000	BHS TRIPS DEC	183.96	
					21-296-7920-031-015-0000	BHS TRIPS NOV	184.88	
					21-296-7920-031-015-0000	BHS TRIPS JAN	232.56	
					21-296-7920-031-022-0000	BHS TRIPS DEC	88.20	
					21-296-7920-031-022-0000	BHS TRIPS DEC	91.08	
					21-296-7920-031-022-0000	BHS TRIPS MARCH	104.76	
					21-296-7920-041-000-0000	BRIDGE TRIPS OCT	153.00	
					21-296-7920-041-000-0000	BRIDGE TRIPS JAN	173.88	
					21-296-7920-121-000-0000	CAMP TRANSPORT	2,704.68	8,050.76
A06528	06/17/2022	51360	NORTHLAND SERVICES LLC	31571 P	11-261-4124-000-000-0000	GRNDS SERV 10/JUN	28,000.00	28,000.00
A06529	06/17/2022	59761	SCHOOL FINANCIAL SOLUTIONS		11-226-3190-000-006-0000	SHARED TIME FINAL 22	84,922.00	84,922.00
A06530	06/17/2022	59924	SCHOOL SPECIALTY LLC	32486 C	11-111-5110-001-000-0000	CONST PAPER	310.74	
				32512 C	11-111-5110-001-000-0000	COLOR PAPER	128.85	
				32381 C	11-111-5110-001-000-0000	ENVELOPES	148.15	
				32382 C	11-111-5110-001-000-0000	FOLDERS	111.78	

Check Register

CheckNo	CkDate	Vendor	Name	PO #	Account	Description	Amount	CheckAmt
				31919 C	11-111-5110-001-000-0000	PLASTIC BINDER	19.34	
				32215 C	11-111-5110-001-000-0000	CONST PAPER	118.35	
				33013 C	11-111-5110-001-002-0000	CONST PAPER	78.62	
				31773 P	11-111-5110-004-000-0000	FOLDERS	37.98	
				31773 C	11-111-5110-004-000-0000	FOLDERS	37.98	
				31172 C	11-111-5110-004-000-0000	BOOK CASE	441.14	
				31283 C	11-111-5110-005-000-0000	POST-ITS	26.99	
				30969 C	11-111-5110-005-000-0000	BLUE FOLDERS	8.82	
				32640 C	11-111-5110-005-000-0000	CONST PAPER	62.47	
				30959 C	11-111-5110-005-000-0000	LESSON PLANS	5.64	
				30961 P	11-111-5110-005-000-0000	LESSON PLANS	1.88	
				32016 P	11-111-5110-005-000-0000	FOLDERS	25.29	
				31102 C	11-111-5110-005-000-0000	TABLES	369.76	
				32016 C	11-111-5110-005-000-0000	FOLDERS	31.65	
				32702 C	11-111-5110-005-000-0000	LAMINATING FILM	118.28	
				30961 C	11-111-5110-005-000-0000	LESSON PLAN	4.49	
				30978 C	11-111-5110-005-001-0000	FILE FOLDERS	10.62	
				32383 C	11-111-5110-005-001-0000	STAPLER/SHARPENER	25.04	
				30963 P	11-111-5110-005-002-0000	MARKER BOARD	7.66	
				30968 P	11-111-5110-005-002-0000	BOARD CLEANER	2.78	
				30968 C	11-111-5110-005-002-0000	DIVIDERS	6.10	
				30963 C	11-111-5110-005-002-0000	TWO POCKET FOLDER	22.49	
				30958 C	11-111-5110-005-004-0000	PENCILS	14.39	
				31526 C	11-111-5110-006-000-0000	PAPER CHARTS	34.79	
				31530 C	11-111-5110-006-000-0000	WATERCOLORS	99.68	
				31527 C	11-111-5110-006-000-0000	PLAYDOH/PAINT	36.36	
				31169 C	11-111-5110-006-000-0000	LAMINATING POUCH	28.27	
				33652 C	11-111-5110-006-010-0000	PAINT/BRUSHES	321.83	
				30953 P	11-112-5110-121-000-0000	INDEX DIVIDERS	1.83	
				30943 C	11-112-5110-121-000-0000	FOLDERS	16.35	
				30937 C	11-112-5110-121-000-0000	BINDER RING	1.14	
				31390 C	11-112-5110-121-000-0000	COLOR PAPER	28.11	
				31150 C	11-112-5110-121-000-0000	SHARPIES	14.61	
				32930 C	11-112-5110-121-000-0000	SHARPIES/PAPER	151.09	
				32585 C	11-112-5110-121-000-0000	COLOR PENCILS/CRAYON	74.53	
				30936 C	11-112-5110-121-000-0000	DRY ERASE POCKET	33.74	

Page 30

District: bg-Brighton Public Schools
Run Date: 6/17/2022 12:49:54PM

Check Register

CheckNo	CkDate	Vendor	Name	PO #	Account	Description	Amount	CheckAmt
A06531	06/17/2022	59742	DUKE SERVICES LLC	33154 P	11-112-5110-121-000-0000	PENS/WORKBOOKS	34.56	
				30953 C	11-112-5110-121-000-0000	CORRECTION TAPE	10.00	
				33135 C	11-112-5110-121-000-0000	GRAPH PAPER	16.02	
				33154 C	11-112-5110-121-000-0000	CONST PAPER	80.29	
				32777 C	11-241-5910-004-000-0000	TAPE/NOTEBOOKS	90.74	
				31730 C	11-241-5910-121-000-0000	FOLDERS	50.64	3,301.86
A06532	06/17/2022	61495	SHAR PRODUCTS COMPANY	33692 C	11-261-4122-000-000-0000	CONT SERV PLUM	2,282.50	2,282.50
A06533	06/17/2022	70675	T-SQUARED DESIGNS INC		11-112-4120-121-000-0000	REPAIRS	30.00	
					11-112-4120-121-000-0000	REPAIRS	20.00	
					11-112-5110-121-039-0000	DOUBLE BASS BOWS	650.00	
					11-112-5110-121-039-0000	BASS ROSIN	8.99	708.99
A06534	06/17/2022	75928	TOWN CENTER INC		41-456-6930-000-000-2019	DESIGN/APR	6,625.00	
					41-456-6930-000-000-2019	DESIGN/MAY	8,952.00	15,577.00
A06535	06/17/2022	49235	TRANE US INC		21-297-4120-000-000-0000	HRNG REP HOTSIDE	316.50	316.50
				33725 C	11-261-4123-000-000-0000	SERVICE CONTROLLER	2,583.88	
				33724 C	11-261-4123-000-000-0000	SERVICE INSTALL	904.00	
				33726 C	11-261-4123-000-000-0000	HVAC CONTR SERV	5,809.35	
A06536	06/17/2022	76028	TRI-COUNTY CLEANING	33723 C	11-261-4123-000-000-0000	SERVICE CONTROL/FAN	612.42	9,909.65
					11-261-5990-000-000-0000	OPERATION SUP	451.59	
					11-261-5990-000-000-0000	OPERATION SUP	1,377.71	
					11-261-5990-000-000-0000	OPERATION SUP	568.48	
					11-261-5990-000-000-0000	OPERATION SUP	263.87	
					11-261-5990-000-000-0000	OPERATION SUP	802.50	
					11-261-5990-000-000-0000	OPERATION SUP	2,129.67	
					11-261-5990-000-000-0000	OPERATION SUP	18.95	
				33702 C	11-261-5992-000-000-0000	MAINT SUP	33.11	
				33721 C	11-261-5992-000-000-0000	MAINT SUP	91.58	
				33720 C	11-261-5992-000-000-0000	MAINT SUP	902.82	6,640.28
				33719 C	11-261-5992-000-000-0000	MAINT SUP		
				33686 C	11-293-5992-000-200-0000	DECALS/SIGNS	213.00	213.00
						Sub Total:	\$235,865.31	
A06537	06/17/2022	82065	W4 SIGNS INC			Register Total:	\$438,834.65	

Check Register

CheckNo	CkDate	Vendor	Name	PO #	Account	Description	Amount	CheckAmt
---------	--------	--------	------	------	---------	-------------	--------	----------

Posting By Fund

Fund Name	Amount
CAFETERIA FUND	\$73,444.14
DEBT FUND 2019	\$1,334.15
GENERAL FUND	\$297,411.85
CAPITAL PROJECT 2019	\$15,577.00
SPEC REV - STUDENT ACTIVITY	\$41,135.54
COMMUNITY EDUCATION	\$185.15
DEBT FUND 2012 REFUND	\$729.12
DEBT FUND SLRF	\$7,571.62
DEBT FUND 2013	\$1,412.83
DEBT FUND 2015	\$33.25
Total:	\$438,834.65

Posting To Detail Control Accounts

Account	Description	Fund	Account Class	Acct. Charge
12-101-1000-000-0000	GENERAL FUND CHECKING	G	O	(438,834.65)
12-131-0000-000-0000	INTERFUND REC AP	G	K	141,422.80
12-402-0000-000-0000	A/P CONTROL - GF	G	D	297,411.85
22-402-0000-000-297-0000	A/P CONTROL - FS	C	D	73,444.14
22-402-0000-000-299-0000	A/P CONTROL STUDENT ACT	K	D	41,135.54
22-402-0000-000-300-0000	A/P CONTROL - CE	M	D	185.15
22-411-0000-000-000-0000	STUD ACTIVIT I/F	K	N	(41,135.54)
22-411-0000-000-297-0000	FOOD SERVICE I/F	C	N	(73,444.14)
22-411-0000-000-300-0000	COMM ED I/F	M	N	(185.15)
32-402-0000-000-000-0000	A/P CONTROL - DEBT	D	D	1,334.15
32-402-0000-000-015-0000	A/P CONTROL ACCT 2015	T	D	33.25
32-402-0000-000-130-0000	AP CONTROL	R	D	1,412.83
32-402-0000-000-300-0000	AP CONTROL	Q	D	7,571.62
32-402-0000-000-500-0000	AP CONTROL	P	D	729.12

District: bg-Brighton Public Schools
Run Date: 6/17/2022 12:49:54PM

Check Register

CheckNo	CkDate	Vendor	Name	PO #	Account	Description	Amount	CheckAmt
32-411-0000-000-015-0000		2015 DEBT I/F			T	(33.25)		
32-411-0000-000-019-0000		2019 DEBT I/F			D	(1,334.15)		
32-411-0000-000-130-0000		2013 DEBT I/F			R	(1,412.83)		
32-411-0000-000-300-0000		SLRF DEBT I/F			Q	(7,571.62)		
32-411-0000-000-500-0000		2012 REF DEBT I/F			P	(729.12)		
42-402-0000-000-000-2019		AP CONTROL			H	15,577.00		
42-411-0000-000-000-2019		2019 CAP PROJ I/F			H	(15,577.00)		

Check Register

CheckNo	CkDate	Vendor	Name	PO #	Account	Description	Amount	CheckAmt
REGULAR CHECKS								
026613	06/24/2022	06550	BEST PLUMBING SPECIALTIES INC	33760 C	11-261-5994-000-000-0000	CLOSET MODULE	1,485.98	
				33759 C	11-261-5994-000-000-0000	SHOWER VALVE	339.74	1,825.72
026614	06/24/2022	06712	BIG JIM'S SEWER AND DRAIN	33693 C	11-261-4122-000-000-0000	LINE JETTING	1,250.00	1,250.00
026615	06/24/2022	08338	C3 AUTOMOTIVE REPAIR LLC		21-271-4130-000-000-0000	VAN TRANSMISSION	5,516.26	5,516.26
026616	06/24/2022	13151	JUDY CIESLAK		21-351-4910-000-000-0000	PETTING ZOO 6/30	765.00	765.00
026617	06/24/2022	13112	COMPREHENSIVE CONTRACTING	33758 C	11-261-4121-000-000-0000	DIRECTIONAL DRILL	3,600.00	3,600.00
026618	06/24/2022	11061	CORRIGAN TOWING	33745 C	11-261-4120-000-000-0000	MEDIUM TOW	247.50	247.50
026619	06/24/2022	11871	DTE ENERGY		11-261-5520-031-000-0000	BHS ELECT 5/10-6/9	6,841.20	6,841.20
026620	06/24/2022	32515	INDUSTRIAL COMMERCIAL STRIPING		11-261-4124-000-000-0000	CRACK SEAL/PAINT	1,500.00	1,500.00
026621	06/24/2022	13161	L&W SUPPLY CO	33751 C	11-261-5992-000-000-0000	USG RADAR	210.86	
				33761 C	11-261-5992-000-000-0000	WHITE TILES	24,837.12	25,047.98
026622	06/24/2022	52450	PANERA BREAD CO		21-297-5610-000-000-0000	BAGELS JUNE	627.66	627.66
026623	06/24/2022	54150	PITNEY BOWES INC		21-311-3430-000-000-0000	CE POST METER	117.00	
					21-311-3430-000-000-0000	CE POST METER	117.00	234.00
026624	06/24/2022	13152	PRESTIGE EXTREME DIST	33449 C	11-113-6410-031-000-0000	5 GALLON PAILS	1,030.00	1,030.00
026625	06/24/2022	13182	THE PROMO SOURCE	33736 C	21-296-5991-000-004-0000	PERFORM TEES	1,835.36	1,835.36
026626	06/24/2022	13091	RESCOM DOOR	32533 C	11-261-4120-000-000-0000	FIRE DOORS	14,600.00	14,600.00
026627	06/24/2022	59604	SCHOLASTIC BOOK FAIRS - 15		21-296-7920-005-000-0000	BOOK FAIR ORDERS	4,259.98	4,259.98
026628	06/24/2022	75930	TOWN AND COUNTRY POOLS INC	33756 C	11-261-5991-000-000-0000	POOL CHEMS	815.00	815.00
026629	06/24/2022	84519	WASTE MANAGEMENT	33752 C	11-261-4125-000-000-0000	ROLLOFF BIN	413.00	413.00
026630	06/24/2022	MSC35	BRENDA VIDOVIC		20-161-0000-000-000-0000	BRENDA VIDOVIC	33.75	33.75
026631	06/24/2022	MSC35	BRIDGET PIETROWICZ		20-161-0000-000-000-0000	BRIDGET PIETROWICZ	10.10	10.10
026632	06/24/2022	MSC35	CARRIE SKILES		20-161-0000-000-000-0000	CARRIE SKILES	27.70	27.70
026633	06/24/2022	MSC35	CYNTHIA PAPARELLA		20-161-0000-000-000-0000	CYNTHIA PAPARELLA	30.00	30.00
026634	06/24/2022	MSC35	DAN SEXSMITH		20-161-0000-000-000-0000	DAN SEXSMITH	10.40	10.40
026635	06/24/2022	MSC35	HEATHER SMITH		20-161-0000-000-000-0000	HEATHER SMITH	10.25	10.25
026636	06/24/2022	MSC35	JANE LARSON		20-161-0000-000-000-0000	JANE LARSON	20.50	20.50
026637	06/24/2022	MSC35	JANE SUKOSKY		20-161-0000-000-000-0000	JANE SUKOSKY	16.05	16.05
026638	06/24/2022	MSC35	JILL REED		20-161-0000-000-000-0000	JILL REED	10.65	10.65
026639	06/24/2022	MSC35	JOHN KORCH		20-161-0000-000-000-0000	JOHN KORCH	10.00	10.00
026640	06/24/2022	MSC35	JULIE RYSZKA		20-161-0000-000-000-0000	JULIE RYSZKA	12.50	12.50

Check Register

CheckNo	CkDate	Vendor	Name	PO #	Account	Description	Amount	CheckAmt
026641	06/24/2022	MSC35	KELLY GAZZENY		20-161-0000-000-0000-0000	KELLY GAZZENY	15.95	15.95
026642	06/24/2022	MSC35	LORRY WAGNER		20-161-0000-000-0000-0000	LORRY WAGNER	15.25	15.25
026643	06/24/2022	MSC35	MARICEL ROBERTS		20-161-0000-000-0000-0000	MARICEL ROBERTS	12.75	12.75
026644	06/24/2022	MSC35	MARYANN RIGGS		20-161-0000-000-0000-0000	MARYANN RIGGS	57.00	57.00
026645	06/24/2022	MSC35	PATTY KIRCHMEIER		20-161-0000-000-0000-0000	PATTY KIRCHMEIER	40.70	40.70
026646	06/24/2022	MSC35	PHILLIP PRYSTASH		20-161-0000-000-0000-0000	PHILLIP PRYSTASH	11.90	11.90
026647	06/24/2022	MSC35	RICHARD PORTER		20-161-0000-000-0000-0000	RICHARD PORTER	11.30	11.30
026648	06/24/2022	MSC55	BEN MULLIGAN		21-296-7920-031-000-0000	BEN MULLIGAN	108.33	108.33
026649	06/24/2022	MSC55	JASON ROBINSON		21-296-7920-031-000-0000	JASON ROBINSON	108.34	108.34
026650	06/24/2022	MSC55	LUKE NEWCOMB		21-296-7920-031-000-0000	LUKE NEWCOMB	108.33	108.33
026651	06/24/2022	MSC55	NICK HARDY		21-296-7920-031-000-0000	NICK HARDY	108.33	108.33
026652	06/24/2022	MSC55	OWEN BLUSH		21-296-7920-031-000-0000	OWEN BLUSH	108.34	108.34
026653	06/24/2022	MSC55	SAMANTHA SCHULTE	33616 C	11-113-3710-031-000-0000	SAMANTHA SCHULTE	100.00	100.00
026654	06/24/2022	MSC55	VANCE STRAUB		21-296-7920-031-000-0000	VANCE STRAUB	108.33	108.33
026655	06/24/2022	MSC60	CLAUDINE KOWALENKO		21-296-5991-000-007-0000	CLAUDINE KOWALENKO	550.12	550.12
026656	06/24/2022	MSC60	ERIKA THOMAS		21-296-7920-021-000-0000	ERIKA THOMAS	50.00	50.00
026657	06/24/2022	MSC60	KIM SHEARER		21-296-5991-000-027-0000	KIM SHEARER	198.26	198.26
026658	06/24/2022	MSC60	MICHELE ZACCAGNI		21-296-5991-000-007-0000	MICHELE ZACCAGNI	126.00	126.00
026659	06/24/2022	MSC60	TRACY MACK		21-296-5991-000-022-0000	TRACY MACK	49.99	49.99

Sub Total: \$72,489.78

ACH CHECKS

A06538	06/24/2022	00930	ADVANCED WATER		11-261-4122-000-000-0000	SOLAR SALT	624.25	624.25
A06539	06/24/2022	13121	AJD PIZZA MANAGEMENT	33743 C	21-297-5610-000-000-0000	PIZZA 5/2	1,943.50	
					21-297-5610-000-000-0000	PIZZA 5/16	1,911.00	
					21-297-5610-000-000-0000	PIZZA 5/23	1,995.50	
					21-297-5610-000-000-0000	PIZZA 5/30	1,976.00	
					21-297-5610-000-000-0000	PIZZA 6/6	2,047.50	
					21-297-5610-000-000-0000	PIZZA 6/13	1,475.50	
					21-297-5610-000-000-0000	PIZZA 5/9	1,989.00	13,338.00
A06540	06/24/2022	05059	AUNT MILLIE'S BAKERIES		21-297-5610-000-000-0000	BAKED GOODS 6/13	263.60	
					21-297-5610-000-000-0000	BAKED GOODS 6/13	235.74	
					21-297-5610-000-000-0000	BAKED GOODS 6/15	2,583.80	3,083.14

Check Register

CheckNo	CkDate	Vendor	Name	PO #	Account	Description	Amount	CheckAmt
A06541	06/24/2022	05235	BSN SPORTS INC	33735 C	11-293-4120-000-000-0000	RAKE/SHOVEL	7,219.04	
				33733 C	21-296-5991-000-004-0000	SLVLESS SHIRTS	2,142.30	
				33737 C	21-296-5991-000-004-0000	SHOES	1,035.30	
				33732 C	21-296-5991-000-032-0000	PIPED PANTS	3,207.99	13,604.63
A06542	06/24/2022	10760	CONSTELLATION NEW ENERGY LLC		11-261-5510-000-000-0000	BECC GAS MAY	471.61	
					11-261-5510-001-000-0000	HAWK GAS MAY	1,329.63	
					11-261-5510-004-000-0000	SPEN GAS MAY	628.42	
					11-261-5510-005-000-0000	HRNG GAS MAY	1,493.93	
					11-261-5510-006-000-0000	HILT GAS MAY	754.94	
					11-261-5510-021-000-0000	SCRN GAS MAY	719.14	
					11-261-5510-031-000-0000	BHS GAS MAY	2,965.47	
					11-261-5510-041-000-0000	BRIDGE GAS MAY	1,022.32	
					11-261-5510-121-000-0000	MALT GAS MAY	1,621.65	
					11-261-5511-000-000-0000	TRNS GAS MAY	931.71	
					21-261-5510-002-000-0000	CE GAS MAY	1,053.98	12,992.80
A06543	06/24/2022	13650	DIRECT ENERGY BUSINESS LLC		11-261-5520-000-000-0000	BECC ELECT 4/22-5/20	503.15	
					11-261-5520-001-000-0000	HAWK ELECT 4/23-5/23	2,161.73	
					11-261-5520-004-000-0000	SPEN ELECT 4/20-5/18	2,410.24	
					11-261-5520-005-000-0000	HRNG ELECT 4/11-5/9	1,524.34	
					11-261-5520-006-000-0000	HILT ELECT 4/19-5/17	2,561.45	
					11-261-5520-021-000-0000	SCRN ELECT 4/23-5/23	5,185.28	
					11-261-5520-031-000-0000	BHS ELECT 4/11-5/9	25,002.99	
					11-261-5520-041-000-0000	BRIDGE ELECT 4/22-5/	1,509.45	
					11-261-5520-121-000-0000	MALT ELECT 4/11-5/9	4,573.04	
					11-261-5521-000-000-0000	TRNS ELECT 4/22-5/20	533.44	
					21-261-5520-002-000-0000	CE ELECT 4/22-5/20	1,750.72	47,715.83
A06544	06/24/2022	25392	REYES HOLDINGS LLC		21-297-5610-000-000-0000	DRINKS JUNE	537.60	537.60
A06545	06/24/2022	34315	JOHN'S SANITATION	33762 C	11-261-4122-000-000-0000	RENTAL AND CLEAN	255.00	255.00
A06546	06/24/2022	34327	JOHNSON CONTROLS	33748 C	11-261-4123-000-000-0000	MILL CONTROLS REP	1,941.50	1,941.50
A06547	06/24/2022	34867	KENSINGTON VALLEY VARSITY	33734 C	21-296-5991-000-012-0000	TOPS/TEES	2,724.16	2,724.16
A06548	06/24/2022	35838	KONICA MINOLTA BUS SOLUTIONS		11-132-4120-041-000-0000	BRIDGE COPIER 5/13-6	1.63	1.63
A06549	06/24/2022	37640	LIVINGSTON COUNTY MECHANICAL	33747 C	11-261-4123-000-000-0000	HVAC CONTR SERV	1,760.00	1,760.00
A06550	06/24/2022	13183	MURTHA ARTIST MANAGEMENT		22-192-0000-000-300-0000	OCT 15 SHOW	3,000.00	3,000.00
A06551	06/24/2022	53375	PEPPER OF DETROIT		21-296-7920-021-100-0000	MUSIC	5.00	
					21-296-7920-021-600-0000	MUSIC	125.99	

District: bg-Brighton Public Schools
Run Date: 6/24/2022 1:36:24PM

Check Register

CheckNo	CkDate	Vendor	Name	PO #	Account	Description	Amount	CheckAmt
					21-296-7920-021-600-0000	MUSIC	216.00	
A06552	06/24/2022	59742	DUKE SERVICES LLC	33746 C	21-296-7920-021-600-0000	MUSIC	22.98	369.97
A06553	06/24/2022	61701	THE SIGN GUYS		11-261-4122-000-000-0000	CONT SERV PLUM	1,760.00	1,760.00
A06554	06/24/2022	49235	TRANE US INC		11-261-4110-000-000-0000	SIGNAGE/LIGHTS	2,796.00	2,796.00
				33753 C	11-261-4123-000-000-0000	SCHEDULED MAINTS	5,021.25	
				33755 C	11-261-4123-000-000-0000	SENSORS	1,186.34	6,207.59
A06555	06/24/2022	76028	TRI-COUNTY CLEANING		11-261-5990-000-000-0000	OPERATION SUP	2,281.56	
					11-261-5990-000-000-0000	OPERATION SUP	1,376.45	3,658.01
A06556	06/24/2022	76046	TRIAX SERVICES	33750 C	11-261-3150-000-000-0000	CLEANING SERVICE	4,426.00	4,426.00
A06557	06/24/2022	82065	W4 SIGNS INC	33749 C	11-261-4130-000-000-0000	REMOVE/REP LOGOS	275.00	275.00
Sub Total:							\$121,071.11	
Register Total:							\$193,560.89	

Check Register

CheckNo	CkDate	Vendor	Name	PO #	Account	Description	Amount	CheckAmt
---------	--------	--------	------	------	---------	-------------	--------	----------

Posting By Fund

Fund Name	Amount
CAFETERIA FUND	\$17,943.15
GENERAL FUND	\$146,098.35
SPEC REV - STUDENT ACTIVITY	\$17,199.43
COMMUNITY EDUCATION	\$12,319.96
Total:	\$193,560.89

Posting To Detail Control Accounts

Account	Description	Fund	Account Class	Acct. Charge
12-101-1000-000-0000	GENERAL FUND CHECKING	G	O	(193,560.89)
12-131-0000-000-0000	INTERFUND REC AP	G	K	47,462.54
12-402-0000-000-0000	A/P CONTROL - GF	G	D	146,098.35
22-402-0000-000-297-0000	A/P CONTROL - FS	C	D	17,943.15
22-402-0000-000-299-0000	A/P CONTROL STUDENT ACT	K	D	17,199.43
22-402-0000-000-300-0000	A/P CONTROL - CE	M	D	12,319.96
22-411-0000-000-000-0000	STUD ACTIVIT I/F	K	N	(17,199.43)
22-411-0000-000-297-0000	FOOD SERVICE I/F	C	N	(17,943.15)
22-411-0000-000-300-0000	COMM ED I/F	M	N	(12,319.96)

Check Register

CheckNo	CkDate	Vendor	Name	PO #	Account	Description	Amount	CheckAmt
REGULAR CHECKS								
026660	06/30/2022	00948	AERO FILTER INC	33788 C	11-261-5992-000-000-0000	MINIPLEAT	1,112.04	
				33790 C	11-261-5992-000-000-0000	MINIPLEAT	1,112.04	
				33789 C	11-261-5992-000-000-0000	CLASS VUVE	883.96	3,108.04
026661	06/30/2022	04535	ARTS PEOPLE INC		21-331-5990-000-000-0000	ONLINE TICKETS	66.60	66.60
026662	06/30/2022	00393	AT&T		11-261-3412-000-000-0000	INTERNET 6/16	694.47	694.47
026663	06/30/2022	06550	BEST PLUMBING SPECIALTIES INC	33779 C	11-261-5994-000-000-0000	SOLENOID	298.57	298.57
026664	06/30/2022	07308	BRIGHTON FORD	33786 C	21-296-7920-031-005-0000	MULTIPLE INVOICES	84.34	84.34
026665	06/30/2022	10015	CLASSIC PAINTING CO		41-456-6220-031-000-2019	BHS CONST	11,277.00	11,277.00
026666	06/30/2022	10785	CONSUMERS ENERGY		11-261-5510-004-000-0000	SPEN GAS 5/20-6/17	120.57	
					11-261-5510-021-000-0000	SCRN GAS 5/24-6/21	220.76	341.33
026667	06/30/2022	11493	CUSTOM ARCHITECTURAL SHEETM		41-456-6220-031-000-2019	BHS CONST	22,500.00	22,500.00
026668	06/30/2022	12000	DAKTRONICS	33168 C	11-111-4120-001-000-0000	REP OUTDOOR MESSAGE	2,157.50	2,157.50
026669	06/30/2022	13191	CLOE MARIE DE FAYS		21-321-3115-000-055-0000	TENNIS ACADEMY	135.00	135.00
026670	06/30/2022	13599	DIGITAL AGE TECHNOLOGIES INC		41-456-6450-031-000-2019	BHS TECHNOLOGY	103,824.00	103,824.00
026671	06/30/2022	13800	DLZ MICHIGAN		41-456-6900-000-000-2019	ARCHITECT REIMBURSAB	10,667.23	
					41-456-6900-000-000-2019	ARCHITECT REIMBURSAB	6,956.00	
					41-456-6900-000-000-2019	ARCHITECT REIMBURSAB	20,041.28	
					41-456-6900-000-000-2019	ARCHITECT REIMBURSAB	13,106.48	50,770.99
026672	06/30/2022	11871	DTE ENERGY		11-261-5520-000-000-0000	750 MAIN LITE 5/21-6	235.36	
					11-261-5520-001-000-0000	HAWK ELECT 5/24-6/22	1,577.34	
					11-261-5520-004-000-0000	SPEN ELECT 5/19-6/17	2,095.48	
					11-261-5520-005-000-0000	HRNG ELECT 5/10-6/9	935.95	
					11-261-5520-006-000-0000	HILT ELECT 5/18-6/16	1,933.18	
					11-261-5520-021-000-0000	SCRN ELECT 5/24-6/22	3,294.09	
					11-261-5520-121-000-0000	MALT ELECT 5/10-6/9	2,807.84	12,879.24
026673	06/30/2022	18374	EDI FINANCE INC	32601 C	11-261-4120-000-000-0000	REPAIRS BUS GARAGE	4,363.83	4,363.83
026674	06/30/2022	22710	GATEWAY EDUCATION HOLDINGS LL	33448 C	11-113-5210-031-000-0000	HS TEXTS	42,027.20	42,027.20
026675	06/30/2022	13041	GLASCO CORP		41-456-6220-031-000-2019	BHS CONST	9,828.00	9,828.00
026676	06/30/2022	27112	HARTLAND SEPTIC	33330 C	11-261-4122-000-000-0000	PUMP/CLEAN TANKS	18,900.00	18,900.00
026677	06/30/2022	13190	AIDAN HEMPEL		21-321-3115-000-055-0000	TENNIS ACADEMY	165.00	165.00
026678	06/30/2022	13189	EMILY HOUSE		21-321-3115-000-055-0000	TENNIS ACADEMY	165.00	165.00
026679	06/30/2022	29920	HOWARD STRUCTURAL STEEL		41-456-6220-031-000-2019	BHS CONST	14,394.37	14,394.37

Check Register

CheckNo	CkDate	Vendor	Name	PO #	Account	Description	Amount	CheckAmt
026680	06/30/2022	31520	HYDRO CHEM LABORATORIES	33782 C	11-261-4122-000-000-0000	SERVICE CALL	150.00	150.00
026681	06/30/2022	34925	KIDS READ NOW, INC	33282 C	11-221-5110-000-000-3670	2022 COMPREHENSIVE	24,890.00	24,890.00
026682	06/30/2022	13161	L&W SUPPLY CO	33787 C	11-261-5992-000-000-0000	DELIVERY	100.00	100.00
026683	06/30/2022	13056	LEONARDS FOUNTAIN SPECIALTIES	33784 C	11-261-5991-000-000-0000	BULK CO2	113.80	
				33783 C	11-261-5991-000-000-0000	BULK CO2	110.00	223.80
026684	06/30/2022	13137	LINDE GAS & EQUIPMENT		11-127-5110-031-550-3440	SHOP GAS 5/20-6/20	92.07	92.07
026685	06/30/2022	37707	LIVINGSTON POWER COMPANY		41-456-6220-001-000-2019	HAWKINS CONST	34,635.10	
					41-456-6220-003-000-2019	TRANSP/OPS CONSTRUCT	4,698.18	
					41-456-6220-004-000-2019	SPENCER CONST	16,519.57	
					41-456-6220-005-000-2019	HOR CONST	18,817.07	
					41-456-6220-006-000-2019	HILTON CONST	25,911.10	
					41-456-6220-121-000-2019	MALTBY CONST	31,202.59	131,783.61
026686	06/30/2022	38690	MARSHALL MUSIC CO		11-112-5110-021-038-0000	REEDS	390.33	
					11-112-5110-021-038-0000	REEDS	33.58	
					11-112-5110-021-038-0000	CYMBAL STAND	84.99	
					11-112-5110-021-038-0000	MALLETS	28.49	537.39
026687	06/30/2022	42705	MICH ASSN OF SCHOOL		11-283-3190-000-000-0000	LR NEGOTIATE HELP	8,640.09	8,640.09
026688	06/30/2022	13162	PEOPLE DRIVEN TECHNOLOGY, INC	33510 C	41-456-6450-031-000-2019	80 DELL OPTIPLEX	54,720.00	
				33509 C	41-456-6450-031-000-2019	DELL 3650 TOWERS	57,336.00	112,056.00
026689	06/30/2022	13186	PONTIAC CEILING & PARTITION		41-456-6220-001-000-2019	HAWKINS CONST	7,110.00	7,110.00
026690	06/30/2022	13071	PRO-COMM INC	32298 C	11-261-5992-000-000-0000	CABLES/AMPS	19,639.59	19,639.59
026691	06/30/2022	55308	QUICK SILVER MARKETING		21-321-5990-000-055-0000	POLO SHIRTS	1,104.00	
					21-321-5990-000-055-0000	T-SHIRTS	1,003.20	2,107.20
026692	06/30/2022	13188	TANNER REED		21-321-3115-000-055-0000	TENNIS ACADEMY	165.00	165.00
026693	06/30/2022	58689	BRIAN SAMULSKI	33775 C	11-293-7410-000-000-0000	WEBSITE&STANDINGS	150.00	150.00
026694	06/30/2022	61270	SERVICE SPORTS		21-321-5990-000-013-0000	JERSEY	35.00	35.00
026695	06/30/2022	13109	SOUTHWEST INDUSTRIES	32890 C	41-456-6410-031-000-2019	KNEE MILL	29,100.30	29,100.30
026696	06/30/2022	65600	STATE DISBURSEMENT UNIT		12-451-0500-000-000-0000	SUPPORT W/H 07/01/22	61.94	61.94
026697	06/30/2022	65725	STATE OF MICHIGAN		11-252-7410-000-000-0000	UNCLAIMED PROP	2,851.15	2,851.15
026698	06/30/2022	76580	UBE INC	33771 C	21-296-5991-000-008-0000	TEAM CAMP	2,700.00	2,700.00
026699	06/30/2022	13171	UNITED PAINTING	33785 C	11-261-4110-000-000-0000	BECC PAINTING	15,225.00	15,225.00
026700	06/30/2022	80430	UNIVERSITY TRANSLATORS		11-122-3190-021-160-0000	INTERPRET SERV	296.37	
					11-122-3190-021-160-0000	INTERPRET SERV	198.00	
					11-122-3190-021-160-0000	INTERPRET SERV	581.40	

Check Register

CheckNo	CkDate	Vendor	Name	PO #	Account	Description	Amount	CheckAmt
026701	06/30/2022	13192	MACKENZIE ZIERAU		11-122-3190-021-160-0000	INTERPRET SERV	251.64	1,327.41
026702	06/30/2022	MSC55	ISABELLE VIAU		21-321-3115-000-055-0000	TENNIS ACADEMY	165.00	165.00
026703	06/30/2022	MSC55	JENNIFER QUINLIVAN		21-351-7411-000-000-0000	ISABELLE VIAU	45.75	45.75
026704	06/30/2022	MSC55	JULIE ASHCROFT	33768 C	10-131-1000-000-001-0000	JENNIFER QUINLIVAN	40.00	40.00
026705	06/30/2022	MSC55	KATHERYNE FRISKE		21-351-7411-000-000-0000	JULIE ASHCROFT	43.25	43.25
026706	06/30/2022	MSC55	KYLIE JORDAN	33765 C	10-131-1000-000-001-0000	KATHERYNE FRISKE	80.00	80.00
026707	06/30/2022	MSC55	LESLIE ASMAN		21-351-7411-000-000-0000	KYLIE JORDAN	45.75	45.75
026708	06/30/2022	MSC55	MANDY OSWALT	33766 C	10-131-1000-000-001-0000	LESLIE ASMAN	40.00	40.00
026709	06/30/2022	MSC55	PARKER FREEMAN	33767 C	10-131-1000-000-001-0000	MANDY OSWALT	40.00	40.00
026710	06/30/2022	MSC60	JANET ROLFER		21-351-7411-000-000-0000	PARKER FREEMAN	45.75	45.75
026711	06/30/2022	MSC60	LESLEY BOLEY		21-321-5990-000-013-0000	JANET ROLFER	153.98	153.98
					21-296-5991-000-007-0000	LESLEY BOLEY	81.34	81.34
Sub Total:							\$657,706.85	

ACH CHECKS

A06558	06/30/2022	00930	ADVANCED WATER		11-261-4122-000-000-0000	REBUILD HILT FINTERS	24,000.00	24,000.00
A06559	06/30/2022	01812	AMERICAN DATA SECURITY	33582 C	11-111-5110-005-000-0000	HRNG DESTRUCTION	52.00	
					11-111-5110-006-000-0000	HILT DESTRUCTION	48.00	
					11-112-5110-021-000-0000	SCRN DESTRUCTION	80.00	
					11-112-5110-121-000-0000	MALT DESTRUCTION	48.00	
					11-241-4120-031-000-0000	BHS DESTRUCTION	1,248.50	
					11-249-5910-041-000-0000	BRIDGE DESTRUCTION	48.00	
					11-252-4910-000-000-0000	BECC DESTRUCTION	68.50	
					21-351-7910-000-000-0000	TOT SPOT DESTRUCTION	48.00	1,641.00
A06560	06/30/2022	02055	AMERICAN INTERIORS INC	32003 C	41-456-6410-031-000-2019	SEATING/LOCKERS	35,991.19	35,991.19
A06561	06/30/2022	05575	BARTON MALOW CO		41-456-6920-000-000-2019	TECH CONSULTANTS	12,000.00	12,000.00
A06562	06/30/2022	13021	BRIVAR CONSTRUCTION		41-456-6220-121-000-2019	MALTBY CONST	170,845.95	170,845.95
A06563	06/30/2022	09961	CLARK CONSTRUCTION CO		41-456-6910-200-000-2019	BECC CONST MNGR	81,810.68	81,810.68
A06564	06/30/2022	11428	CSM MECHANICAL LLC		41-456-6220-031-000-2019	BHS CONST	99,409.54	99,409.54
A06565	06/30/2022	11808	D M BURR SECURITY		11-261-3150-000-000-0000	BANKCOURIER 6/10	95.45	
					11-261-3150-000-000-0000	BANKCOURIER 6/17	95.45	190.90
A06566	06/30/2022	13650	DIRECT ENERGY BUSINESS LLC		11-261-5520-005-000-0000	HRNG ELECT 6/22	2,013.12	
					11-261-5520-006-000-0000	HILT ELECT 6/22	2,811.52	
					11-261-5520-031-000-0000	BHS ELECT 6/22	27,322.15	

Check Register

CheckNo	CkDate	Vendor	Name	PO #	Account	Description	Amount	CheckAmt
A06567	06/30/2022	18952	EXECUTIVE ENERGY		11-261-5520-121-000-0000	MALT ELECT 6/22	6,039.35	38,186.14
A06568	06/30/2022	22765	GELARDI PRODUCE CO		11-261-4128-000-000-0000	ENERGY MNGT MAY	500.00	500.00
A06569	06/30/2022	32988	INTEGRATED DESIGNS		21-297-5610-000-000-0000	PRODUCE/APR	112.50	112.50
					41-456-6900-000-000-2019	ARCHITECT REIMBURSAB	2,565.14	
					41-456-6900-001-000-2019	HAWKINS ARCHITECT	658.10	
					41-456-6900-002-000-2019	MILLER ARCHITECT	658.10	
					41-456-6900-003-000-2019	TRANSP/OPS ARCHITECT	658.10	
					41-456-6900-004-000-2019	SPENCER ARCHITECT	658.10	
					41-456-6900-005-000-2019	HOR ARCHITECT	658.10	
					41-456-6900-006-000-2019	HILTON ARCHITECT	658.10	
					41-456-6900-021-000-2019	SCRANTON ARCHITECT	2,737.35	
					41-456-6900-031-000-2019	BHS ARCHITECT	2,737.35	
					41-456-6900-121-000-2019	MAL ARCHITECT	658.10	
					41-456-6900-200-000-2019	BECC ARCHITECT	658.10	13,304.64
A06570	06/30/2022	34867	KENSINGTON VALLEY VARSITY	33774 C	21-296-5991-000-005-0000	T-SHIRTS	1,017.48	
				33772 C	21-296-5991-000-015-0000	T-SHIRTS	1,034.01	
				33773 C	21-296-5991-000-018-0000	JACKET	96.00	
				33612 C	21-296-5991-000-020-0000	LS SHIRTS	286.50	
				33612 C	21-296-5991-000-021-0000	LS SHIRTS	286.51	2,720.50
A06571	06/30/2022	35838	KONICA MINOLTA BUS SOLUTIONS		11-111-4220-001-000-0000	HAWKCOPIERS3/19-6/18	317.69	
					11-111-4220-006-000-0000	HILTCOPIERS3/19-6/18	49.61	
					11-112-4220-021-000-0000	SCRNCOPIERS3/19-6/18	348.18	
					11-113-4220-031-000-0000	BHS COPIERS3/19-6/18	287.39	
					11-127-5110-031-562-3440	STAPLES	86.78	
					11-232-4220-000-000-0000	SUPTCOPIER3/19-6/18	76.92	
					11-271-4220-000-000-0000	TRNSCOPIER3/19-6/18	34.89	
				33769 C	11-284-4120-000-000-0000	PRINTERS CONTRACT	2,010.00	3,211.46
A06572	06/30/2022	35929	KRUEGER INTERNATIONAL INC		11-111-6420-001-000-0000	CHAIRS/DESKS	3,655.23	
				33084 C	11-111-6420-004-000-0000	CHAIRS/DESKS	6,156.88	
				33085 C	11-111-6420-004-000-0000	CHAIRS/DESKS	6,156.88	
				33266 C	11-113-6410-031-000-0000	DESKS/CHAIRS	6,699.52	
				33267 C	11-113-6410-031-000-0000	DESKS	7,649.25	
				33268 C	11-113-6410-031-000-0000	CHAIRS	7,385.17	31,546.05
A06573	06/30/2022	37640	LIVINGSTON COUNTY MECHANICAL	33780 C	11-261-4123-000-000-0000	HVAC CONTR SERV	1,815.00	1,815.00
A06574	06/30/2022	37665	LIVINGSTON CTY TREASURER		10-111-0000-000-000-5000	PROPERTY TAX ADJUST	10,298.07	
					30-111-1000-000-015-6000	PROP TAX ADJUST 2015	12.34	

Check Register

CheckNo	CkDate	Vendor	Name	PO #	Account	Description	Amount	CheckAmt
A06575	06/30/2022	37672	LIVINGSTON EDUCATIONAL		30-111-1000-000-019-6000	PROPERTY TAX ADJUST	495.27	
					30-111-1000-000-130-6000	PROP TAX ADJUST 2013	524.47	
					30-111-1000-000-300-6000	PROP TAX ADJUST SLRF	2,810.75	
					30-111-1000-000-500-6000	PROP TAX ADJUST 2012	270.67	14,411.57
A06575	06/30/2022	37672	LIVINGSTON EDUCATIONAL		11-127-5110-031-573-3440	TRIPS/MAY	182.88	
					11-293-4920-000-000-0000	ATHL TRIPS/MAY	2,510.28	
					11-293-4920-000-000-0000	TRIPS/MAY	155.88	
					21-296-7920-001-000-0000	TRIPS/MAY	596.12	
					21-296-7920-004-000-0000	TRIPS/MAY	374.76	
					21-296-7920-006-000-0000	TRIPS/MAY	797.76	
					21-296-7920-031-000-0000	TRIPS/MAY	180.00	
					21-296-7920-031-000-0000	TRIPS/MAY	95.76	
					21-296-7920-121-000-0000	TRIPS/MAY	2,580.12	7,473.56
A06576	06/30/2022	46921	MOTOR CITY ELECTRIC		41-456-6220-031-000-2019	BHS CONST	67,548.80	67,548.80
A06577	06/30/2022	59761	SCHOOL FINANCIAL SOLUTIONS		12-192-0000-000-000-0000	SHAREDSERV 1ST 22/23	413,052.58	413,052.58
A06578	06/30/2022	59924	SCHOOL SPECIALTY LLC		11-111-5110-001-000-0000	RUBBER BANDS	1.42	
					11-111-5110-006-000-0000	A SPAANSTRA	74.07	
					11-111-5110-006-000-0000	A SPAANSTRA	66.26	
					11-111-5110-006-000-0000	R OBERT	5.00	
					11-111-5110-006-000-0000	R OBERT	5.35	
					11-111-5110-006-002-0000	K ROUSSEAU	157.16	
					11-111-5110-006-003-0000	M BEANE	5.09	
					11-241-5910-001-000-0000	WORKROOM SUPS	227.18	
					11-241-5910-001-000-0000	WORKROOM SUPS	177.42	
					11-241-5910-006-000-0000	T GATTI	84.30	
					21-296-7920-006-000-0000	K CORRIGAN	286.75	
					21-296-7920-006-000-0000	CLAUER	1,750.00	
					21-296-7920-121-000-0000	A VUICHARD	61.98	
					21-296-7920-121-000-0000	A VUICHARD	85.35	2,987.33
A06579	06/30/2022	59742	DUKE SERVICES LLC	33781 C	11-261-4122-000-000-0000	CONT SERV PLUM	1,980.00	1,980.00
A06580	06/30/2022	63800	SPIEKER COMPANY		41-456-6220-021-000-2019	SCRANTON CONST	10,270.00	
					41-456-6220-031-000-2019	BHS CONST	16,912.30	27,182.30
					11-261-5990-000-000-0000	OPERATION SUP	2,132.26	
A06581	06/30/2022	76028	TRI-COUNTY CLEANING		11-261-5990-000-000-0000	OPERATION SUP	1,502.59	3,634.85
Sub Total:							\$1,055,556.54	

Check Register

CheckNo	CkDate	Vendor	Name	PO #	Account	Description	Amount	CheckAmt
Register Total:							\$1,713,263.39	

Check Register

CheckNo	CkDate	Vendor	Name	PO #	Account	Description	Amount	CheckAmt
---------	--------	--------	------	------	---------	-------------	--------	----------

Posting By Fund

Fund Name	Amount
CAFETERIA FUND	\$112.50
DEBT FUND 2019	\$495.27
GENERAL FUND	\$692,518.96
CAPITAL PROJECT 2019	\$1,000,737.37
SPEC REV - STUDENT ACTIVITY	\$12,394.78
COMMUNITY EDUCATION	\$3,386.28
DEBT FUND 2012 REFUND	\$270.67
DEBT FUND SLRF	\$2,810.75
DEBT FUND 2013	\$524.47
DEBT FUND 2015	\$12.34
Total:	\$1,713,263.39

Posting To Detail Control Accounts

Account	Description	Fund	Account Class	Acct. Charge
12-101-1000-000-0000	GENERAL FUND CHECKING	G	O	(1,713,263.39)
12-131-0000-000-0000	INTERFUND REC AP	G	K	1,020,744.43
12-402-0000-000-0000	A/P CONTROL - GF	G	D	692,518.96
22-402-0000-000-297-0000	A/P CONTROL - FS	C	D	112.50
22-402-0000-000-299-0000	A/P CONTROL STUDENT ACT	K	D	12,394.78
22-402-0000-000-300-0000	A/P CONTROL - CE	M	D	3,386.28
22-411-0000-000-000-0000	STUD ACTIVIT I/F	K	N	(12,394.78)
22-411-0000-000-297-0000	FOOD SERVICE I/F	C	N	(112.50)
22-411-0000-000-300-0000	COMM ED I/F	M	N	(3,386.28)
32-402-0000-000-000-0000	A/P CONTROL - DEBT	D	D	495.27
32-402-0000-000-015-0000	A/P CONTROL ACCT 2015	T	D	12.34
32-402-0000-000-130-0000	AP CONTROL	R	D	524.47
32-402-0000-000-300-0000	AP CONTROL	Q	D	2,810.75
32-402-0000-000-500-0000	AP CONTROL	P	D	270.67

District: bg-Brighton Public Schools
Run Date: 6/30/2022 1:12:58PM

Check Register

CheckNo	CkDate	Vendor	Name	PO #	Account	Description	Amount	CheckAmt
32-411-0000-000-015-0000		2015 DEBT I/F			T	(12.34)		
32-411-0000-000-019-0000		2019 DEBT I/F			D	(495.27)		
32-411-0000-000-130-0000		2013 DEBT I/F			R	(524.47)		
32-411-0000-000-300-0000		SLRF DEBT I/F			Q	(2,810.75)		
32-411-0000-000-500-0000		2012 REF DEBT I/F			P	(270.67)		
42-402-0000-000-000-2019		AP CONTROL			H	1,000,737.37		
42-411-0000-000-000-2019		2019 CAP PROJ I/F			H	(1,000,737.37)		

BRIGHTON AREA SCHOOLS
Board of Education
July 11, 2022

Report #22-87

For Action

Subject:

A. Negotiations, 8 (c) collective bargaining

Motion

Moved by:

Supported by:

To enter closed session for the purpose of discussing negotiation strategies connected with collective bargaining units inasmuch as the administration has requested a closed session.

Roll Call Vote:

___ Conely
___ Reid
___ Myers
___ Trombley
___ Mitchell
___ Krebs
___ Stahl