



The Pathway to the Promise.

Appendix A

Detailed School Recommendations by Region

November 2, 2009

Pittsburgh CAPA 6-12

Pittsburgh Linden K-5



Pittsburgh Allderdice High School



Building Excellence: Blueprint for the Future

FACILITIES

North West Region

School by School Recommendations

16 Schools

North/West

ALLEGHENY K-5

Grade Config: K-5

Enrollment (2008-09)

Total Students:	449
PK	0
K-5	449
6-8	0
9-12	0

Capacity (2008-09)

Capacity	519
Excess Capacity	70

Facility Baseline Data

Year Built:	1904	Acres:	1.4
Gross SF:	48,390	Demountables:	0

Condition Assessment

Facility Condition Index (FCI):	64
Condition Level:	Major Reno

Recommendation:

Projected Enrollment (2018-19)

Total Students:	456
PK	0
K-5	456
6-8	0
9-12	0

Capacity (2018-19)

Capacity	519
Excess Capacity	63

Realignment

Grade Config	K-5
Total Students:	456
PK	0
K-5	456
6-8	0
9-12	0

Capacity	519
Excess Capacity	63

ALLEGHENY ES [K-5]

Phase 1: 2010-2014

Configuration Action: No Change

Condition Action: Major Reno

Estimated Project Cost: \$11.4m

Remains a K-5 School.

North/West

ALLEGHENY 6-8

Grade Config: 6-8

Total Students: 293

PK 0

K-5 0

6-8 293

9-12 0

Capacity (2008-09)

Capacity 438

Excess Capacity 145

Facility Baseline Data

Year Built: 1904 Acres: 1.4

Gross SF: 127,920 Demountables: 0

Condition Assessment

Facility Condition Index (FCI): 64

Condition Level: Major Reno

Recommendation:

Projected

Enrollment (2018-19)

Total Students: 300

PK 0

K-5 0

6-8 300

9-12 0

Capacity (2018-19)

Capacity 438

Excess Capacity 138

Realignment

Grade Config 6-8

Total Students: 300

PK 0

K-5 0

6-8 300

9-12 0

Capacity 438

Excess Capacity 138

ALLEGHENY MS [6-8]

Phase 1: 2010-2014

Configuration Action: No Change

Condition Action: Major Reno

Estimated Project Cost: \$31.9m

Remains a 6-8 School.

North/West

CHARTIERS ECC

Grade Config: PK

Enrollment (2008-09)

Total Students:	115
PK	115
K-5	0
6-8	0
9-12	0

Capacity (2008-09)

Capacity	218
Excess Capacity	103

Facility Baseline Data

Year Built:	1959	Acres:	5.4
Gross SF:	25,548	Demountables:	0

Condition Assessment

Facility Condition Index (FCI):	51
Condition Level:	Moderate Reno

Recommendation:

Projected

Enrollment (2018-19)

Total Students:	120
PK	120
K-5	0
6-8	0
9-12	0

Capacity (2018-19)

Capacity	218
Excess Capacity	98

Realignment

Grade Config	PK
Total Students:	120
PK	120
K-5	0
6-8	0
9-12	0

Capacity	218
Excess Capacity	98

CHARTIERS ECC [PK]

Phase 3: 2014-2018

Configuration Action: No Change

Condition Action: Moderate Reno

Estimated Project Cost: \$4.0m

Remains an ECC.

North/West

KING PK-8

Grade Config: **PK-8**

Enrollment (2008-09)

Total Students:	632
PK	75
K-5	378
6-8	179
9-12	0

Capacity (2008-09)

Capacity	1053
Excess Capacity	421

Facility Baseline Data

Year Built:	1973	Acres:	3.8
Gross SF:	123,002	Demountables:	0

Condition Assessment

Facility Condition Index (FCI):	29
Condition Level:	Minor Reno

(See Manchester Boundary Adjustment Map)

Recommendation:

Projected

Enrollment (2018-19)

Total Students:	521
PK	80
K-5	303
6-8	138
9-12	0

Capacity (2018-19)

Capacity	1053
Excess Capacity	532

Realignment

Grade Config	PK-8
Total Students:	730
PK	100
K-5	440
6-8	190
9-12	0

Capacity	1053
Excess Capacity	323

KING ES [PK-8]

Phase 3: 2014-2018

Configuration Action: Adjust Boundaries

Condition Action: Minor Reno

Estimated Project Cost: \$9.7m

Enrollment increases with addition of Manchester students in Phase I.

North/West

MANCHESTER PK-8

Grade Config: K-8

Enrollment (2008-09)

Total Students:	281
PK	16
K-5	203
6-8	62
9-12	0

Capacity (2008-09)

Capacity	549
Excess Capacity	268

Facility Baseline Data

Year Built:	1964	Acres:	2.7
Gross SF:	76,087	Demountables:	0

Condition Assessment

Facility Condition Index (FCI):	75
Condition Level:	Major Reno

(See Manchester Boundary Adjustment Map)

Recommendation:

Projected Enrollment (2018-19)

Total Students:	209
PK	20
K-5	137
6-8	52
9-12	0

Capacity (2018-19)

Capacity	549
Excess Capacity	340

Realignment

Grade Config	na
Total Students:	0
PK	0
K-5	0
6-8	0
9-12	0

Capacity	0
Excess Capacity	0

MANCHESTER [Discontinue]

Phase 1: 2010-2014

Configuration Action: Discontinue

Condition Action: No Renovation Work

Cost Avoidance \$18.0m

Students to be assigned to King.

North/West

MORROW PK-5

Grade Config: PK-5

Enrollment (2008-09)

Total Students:	409
PK	26
K-5	383
6-8	0
9-12	0

Capacity (2008-09)

Capacity	458
Excess Capacity	49

Facility Baseline Data

Year Built:	1895	Acres:	1.4
Gross SF:	72,875	Demountables:	0

Condition Assessment

Facility Condition Index (FCI):	67
Condition Level:	Major Reno

(See Morrow Boundary Adjustment Map)

Recommendation:

Projected Enrollment (2018-19)

Total Students:	387
PK	20
K-5	367
6-8	0
9-12	0

Capacity (2018-19)

Capacity	458
Excess Capacity	71

Realignment

Grade Config	na
Total Students:	0
PK	0
K-5	0
6-8	0
9-12	0

Capacity	0
Excess Capacity	0

MORROW [Discontinue]

Phase 1: 2010-2014

Configuration Action: Discontinue

Condition Action: No Renovation Work

Cost Avoidance \$17.2m

Students to be assigned to Rooney and Northview.

North/West

NORTHVIEW PK-5

Grade Config: PK-5

Enrollment (2008-09)

Total Students:	374
PK	29
K-5	345
6-8	0
9-12	0

Capacity (2008-09)

Capacity	588
Excess Capacity	214

Facility Baseline Data

Year Built:	1962	Acres:	13.1
Gross SF:	69,405	Demountables:	0

Condition Assessment

Facility Condition Index (FCI):	48
Condition Level:	Moderate Reno

(See Morrow Boundary Adjustment Map)

Recommendation:

Projected

Enrollment (2018-19)

Total Students:	342
PK	40
K-5	302
6-8	0
9-12	0

Capacity (2018-19)

Capacity	588
Excess Capacity	246

Realignment

Grade Config	PK-5
Total Students:	403
PK	40
K-5	363
6-8	0
9-12	0

Capacity	588
Excess Capacity	225

NORTHVIEW ES [PK-5]

Phase 2: 2012-2016

Configuration Action: Adjust Boundaries

Condition Action: Moderate Reno

Estimated Project Cost: \$10.9m

Enrollment to increase with addition of some of Morrow Students.

North/West

PITTSBURGH CLASSICAL ACADEMY 6-8

Grade Config: 6-8

Enrollment (2008-09)

Total Students:	348
PK	36
K-5	0
6-8	312
9-12	0

Capacity (2008-09)

Capacity	374
Excess Capacity	26

Facility Baseline Data

Year Built:	1974	Acres:	36.3
Gross SF:	224,105	Demountables:	0

Condition Assessment

Facility Condition Index (FCI):	33
Condition Level:	Moderate Reno

(See Schaeffer Boundary Adjustment Map)

Recommendation:

GREENWAY MS [6-8]

Phase 1: 2010-2014

Configuration Action: School/Facility Change

Condition Action: Moderate Reno

Estimated Project Cost: \$37.1m

Remains a 6-8 School. Schiller combines with Classical at Greenway. Professional Development Center remains at Greenway.

Projected

Enrollment (2018-19)

Total Students:	360
PK	60
K-5	0
6-8	300
9-12	0

Capacity (2018-19)

Capacity	374
Excess Capacity	14

Realignment

Grade Config	6-8
Total Students:	626
PK	60
K-5	0
6-8	566
9-12	0

Capacity	374
Excess Capacity	-252

North/West

ROONEY 6-8

Grade Config: 6-8

Enrollment (2008-09)

Total Students:	222
PK	0
K-5	0
6-8	222
9-12	0

Capacity (2008-09)

Capacity	450
Excess Capacity	228

Facility Baseline Data

Year Built:	1921	Acres:	7.0
Gross SF:	79,049	Demountables:	0

Condition Assessment

Facility Condition Index (FCI):	12
Condition Level:	General Maint

(See Morrow Boundary Adjustment Map)

Recommendation:

Projected

Enrollment (2018-19)

Total Students:	81
PK	0
K-5	0
6-8	81
9-12	0

Capacity (2018-19)

Capacity	450
Excess Capacity	369

Realignment

Grade Config	PK-8
Total Students:	412
PK	20
K-5	311
6-8	81
9-12	0

Capacity	450
Excess Capacity	38

ROONEY ES [PK-8]

Phase 4: 2016-2020

Configuration Action: Grade Change

Condition Action: General Maint

Estimated Project Cost: \$.0m

Enrollment to increase with addition of some of Morrow students. Receives Morrow students during Phase 1.

North/West

SCHAEFFER K-8 PRIMARY

Grade Config: **K-3**

Enrollment (2008-09)

Total Students: **174**

PK **0**

K-5 **174**

6-8 **0**

9-12 **0**

Capacity (2008-09)

Capacity **196**

Excess Capacity **22**

Facility Baseline Data

Year Built: **1960** Acres: **1.0**

Gross SF: **26,780** Demountables: **1**

Condition Assessment

Facility Condition Index (FCI): **58**

Condition Level: **Moderate Reno**

(See Schaeffer Boundary Adjustment Map)

Recommendation:

SCHAEFFER PRIMARY [Discontinue]

Phase 1: 2010-2014

Configuration Action: Discontinue

Condition Action: No Renovation Work

Cost Avoidance \$4.2m

Schaeffer Primary to be discontinued. Schaeffer Intermediate to become a K-8. K-8 boundaries to be realigned for Schaeffer Intermediate, Stevens, and Westwood.

Projected

Enrollment (2018-19)

Total Students: **135**

PK **0**

K-5 **135**

6-8 **0**

9-12 **0**

Capacity (2018-19)

Capacity **196**

Excess Capacity **61**

Realignment

Grade Config **na**

Total Students: **0**

PK **0**

K-5 **0**

6-8 **0**

9-12 **0**

Capacity **0**

Excess Capacity **0**

North/West

SCHAEFFER K-8 INTERMEDIATE

Grade Config: 4-8

Enrollment (2008-09)

Total Students:	176
PK	0
K-5	85
6-8	91
9-12	0

Capacity (2008-09)

Capacity	271
Excess Capacity	95

Facility Baseline Data

Year Built:	1959	Acres:	2.5
Gross SF:	30,890	Demountables:	2

Condition Assessment

Facility Condition Index (FCI):	55
Condition Level:	Moderate Reno

(See Schaeffer Boundary Adjustment Map)

Projected Enrollment (2018-19)

Total Students:	113
PK	0
K-5	49
6-8	64
9-12	0

Capacity (2018-19)

Capacity	271
Excess Capacity	158

Recommendation:

Realignment

Grade Config	K-8
Total Students:	162
PK	0
K-5	98
6-8	64
9-12	0

Capacity	271
Excess Capacity	109

SCHAEFFER INTERMEDIATE (K-8)

Phase 2: 2012-2016

Configuration Action: Adjust Boundaries

Condition Action: Moderate Reno

Estimated Project Cost: \$4.9m

Schaeffer Primary to be discontinued. Schaeffer Intermediate to become a K-8. K-8 boundaries to be realigned for Schaeffer Intermediate, Stevens, and Westwood.

North/West

SCHILLER 6-8

Grade Config: 6-8

Enrollment (2008-09)

Total Students: 238

PK 0

K-5 0

6-8 238

9-12 0

Capacity (2008-09)

Capacity 305

Excess Capacity 67

Facility Baseline Data

Year Built: 1938 Acres: 1.2

Gross SF: 46,114 Demountables: 0

Condition Assessment

Facility Condition Index (FCI): 74

Condition Level: Major Reno

(See Schaeffer Boundary Adjustment Map)

Projected

Enrollment (2018-19)

Total Students: 266

PK 0

K-5 0

6-8 266

9-12 0

Capacity (2018-19)

Capacity 305

Excess Capacity 39

Recommendation:

Realignment

Grade Config na

Total Students: 0

PK 0

K-5 0

6-8 0

9-12 0

Capacity 0

Excess Capacity 0

SCHILLER [Discontinue]

Phase 1: 2010-2014

Configuration Action: Discontinue

Condition Action: No Renovation Work

Cost Avoidance \$11.5m

Schiller combines with Pittsburgh Classical Academy at Greenway. Professional Development Center remains at Greenway.

North/West

SPRING GARDEN ECC

Grade Config: PK

Enrollment (2008-09)

Total Students:	78
PK	78
K-5	0
6-8	0
9-12	0

Capacity (2008-09)

Capacity	163
Excess Capacity	85

Facility Baseline Data

Year Built:	1938	Acres:	3.6
Gross SF:	27,969	Demountables:	1

Condition Assessment

Facility Condition Index (FCI):	60
Condition Level:	Moderate Reno

Recommendation:

Projected

Enrollment (2018-19)

Total Students:	160
PK	160
K-5	0
6-8	0
9-12	0

Capacity (2018-19)

Capacity	163
Excess Capacity	3

Realignment

Grade Config	PK
Total Students:	160
PK	160
K-5	0
6-8	0
9-12	0

Capacity	163
Excess Capacity	3

SPRING GARDEN ECC

Phase 4: 2016-2019

Configuration Action: No Change

Condition Action: Moderate Reno

Cost \$4.4m

Remains an ECC.

North/West

SPRING HILL K-5

Grade Config: K-5

Enrollment (2008-09)

Total Students:	272
PK	0
K-5	272
6-8	0
9-12	0

Capacity (2008-09)

Capacity	276
Excess Capacity	4

Facility Baseline Data

Year Built:	1896	Acres:	1.7
Gross SF:	37,123	Demountables:	0

Condition Assessment

Facility Condition Index (FCI):	53
Condition Level:	Moderate Reno

Recommendation:

Projected Enrollment (2018-19)

Total Students:	234
PK	0
K-5	234
6-8	0
9-12	0

Capacity (2018-19)

Capacity	276
Excess Capacity	42

Realignment

Grade Config	K-5
Total Students:	234
PK	0
K-5	234
6-8	0
9-12	0

Capacity	276
Excess Capacity	42

SPRING HILL ES [K-5]

Phase 2: 2012-2016

Configuration Action: No Change

Condition Action: Moderate Reno

Estimated Project Cost: \$5.8m

Remains a K-5 School.

North/West

STEVENS K-8

Grade Config: **K-8**

Enrollment (2008-09)

Total Students:	328
PK	0
K-5	231
6-8	97
9-12	0

Capacity (2008-09)

Capacity	502
Excess Capacity	174

Facility Baseline Data

Year Built:	1938	Acres:	1.5
Gross SF:	64,079	Demountables:	0

Condition Assessment

Facility Condition Index (FCI):	59
Condition Level:	Moderate Reno

(See Schaeffer Boundary Adjustment Map)

Recommendation:

Projected

Enrollment (2018-19)

Total Students:	221
PK	0
K-5	172
6-8	49
9-12	0

Capacity (2018-19)

Capacity	502
Excess Capacity	281

Realignment

Grade Config	K-8
Total Students:	302
PK	0
K-5	253
6-8	49
9-12	0

Capacity	502
Excess Capacity	200

STEVENS ES [K-8]

Phase 2: 2012-2016

Configuration Action: Adjust Boundaries

Condition Action: Moderate Reno

Estimated Project Cost: \$10.1m

Schaeffer Primary to be discontinued. Schaeffer Intermediate to become a K-8. K-8 boundaries to be realigned for Schaeffer Intermediate, Stevens, and Westwood.

North/West

WESTWOOD K-8

Grade Config: **K-8**

Enrollment (2008-09)

Total Students: **345**

PK	0
K-5	276
6-8	69
9-12	0

Capacity (2008-09)

Capacity	455
Excess Capacity	110

Facility Baseline Data

Year Built:	1956	Acres:	12.7
Gross SF:	63,178	Demountables:	0

Condition Assessment

Facility Condition Index (FCI):	63
Condition Level:	Major Reno

(See Schaeffer Boundary Adjustment Map)

Recommendation:

WESTWOOD ES [K-8]

Phase 2: 2012-2016

Configuration Action: Adjust Boundaries

Condition Action: Major Reno

Estimated Project Cost: \$14.9m

Schaeffer Primary to be discontinued. Schaeffer Intermediate to become a K-8. K-8 boundaries to be realigned for Schaeffer Intermediate, Stevens, and Westwood.

Projected

Enrollment (2018-19)

Total Students: **267**

PK	0
K-5	232
6-8	35
9-12	0

Capacity (2018-19)

Capacity	455
Excess Capacity	188

Realignment

Grade Config **K-8**

Total Students: **267**

PK	0
K-5	232
6-8	35
9-12	0

Capacity **455**

Excess Capacity **188**

NORTH/WEST Boundary Adjustments

Manchester

Manchester, King

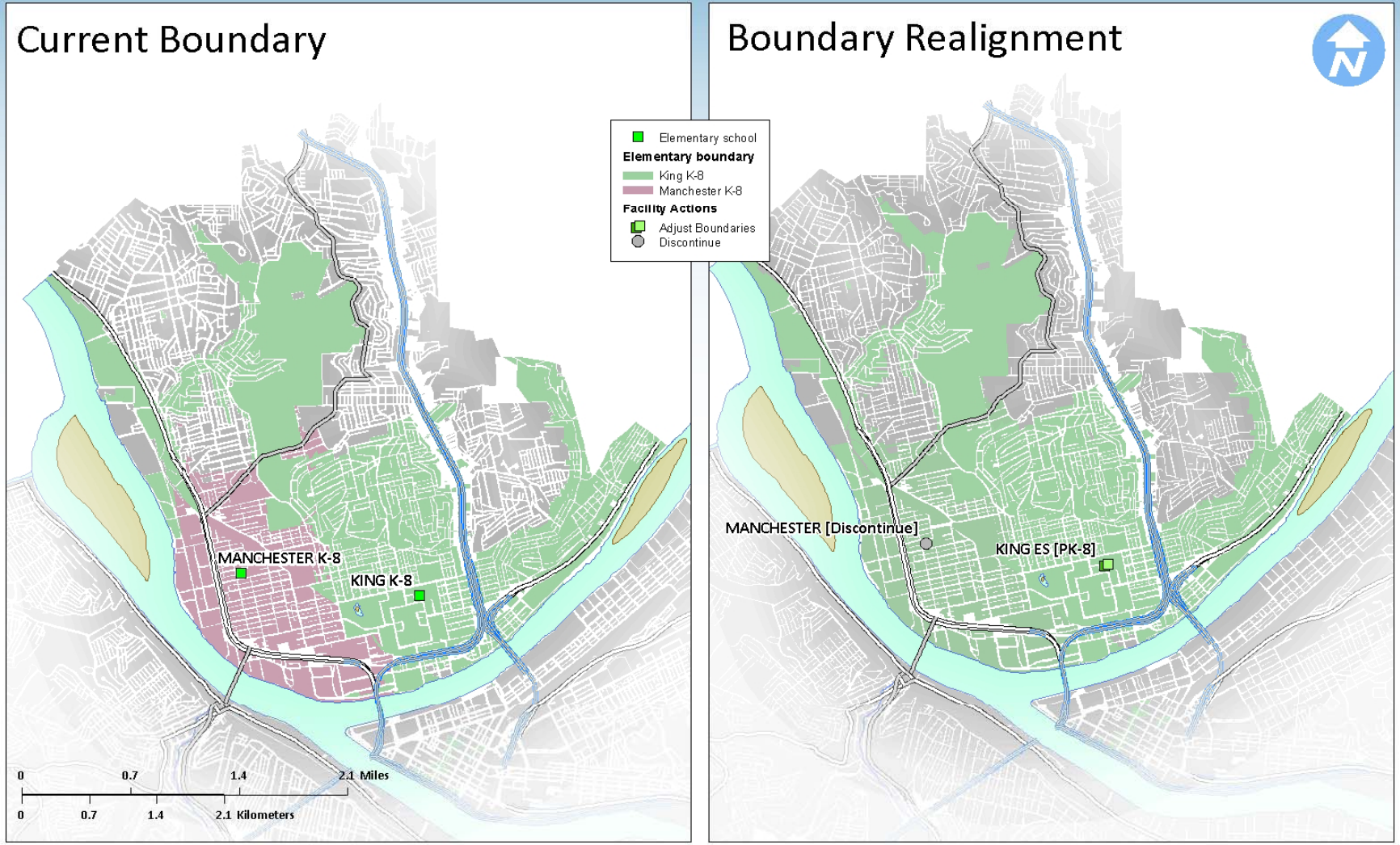
Morrow

Morrow, Northview, Rooney, Spring Garden

Schaeffer

Schaeffer Primary, Schaeffer Intermediate,
Stevens, Westwood

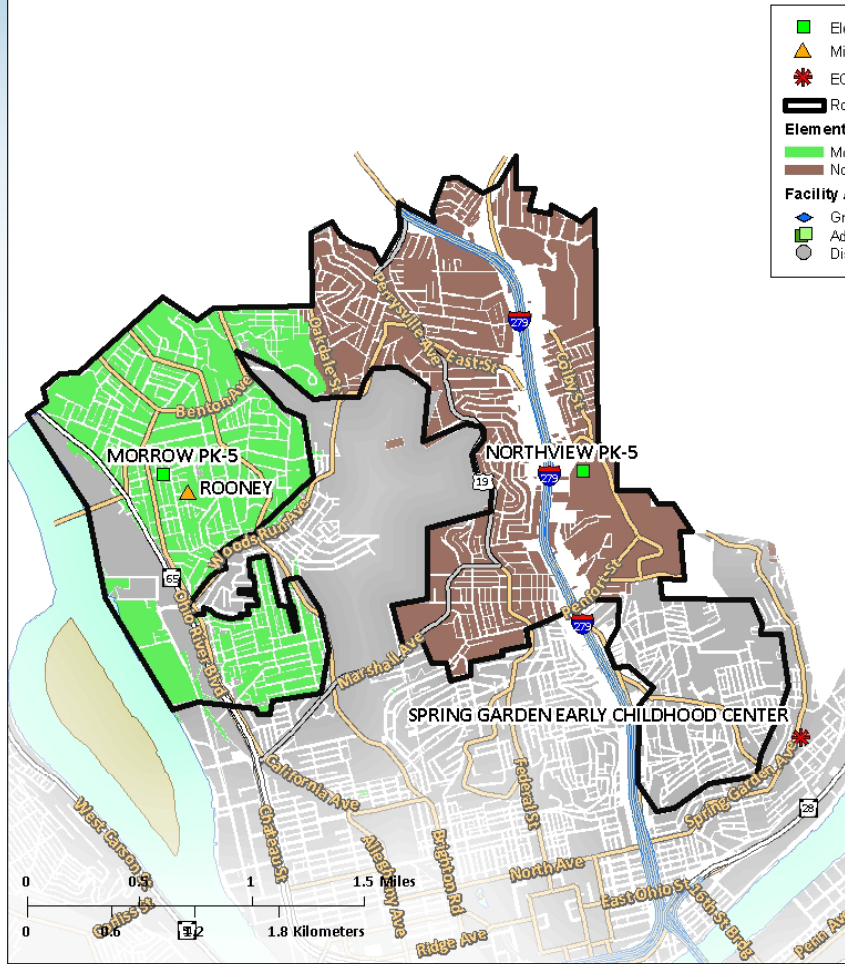
Manchester Boundary Realignment



Manchester Boundary Realignment

Morrow Boundary Realignment

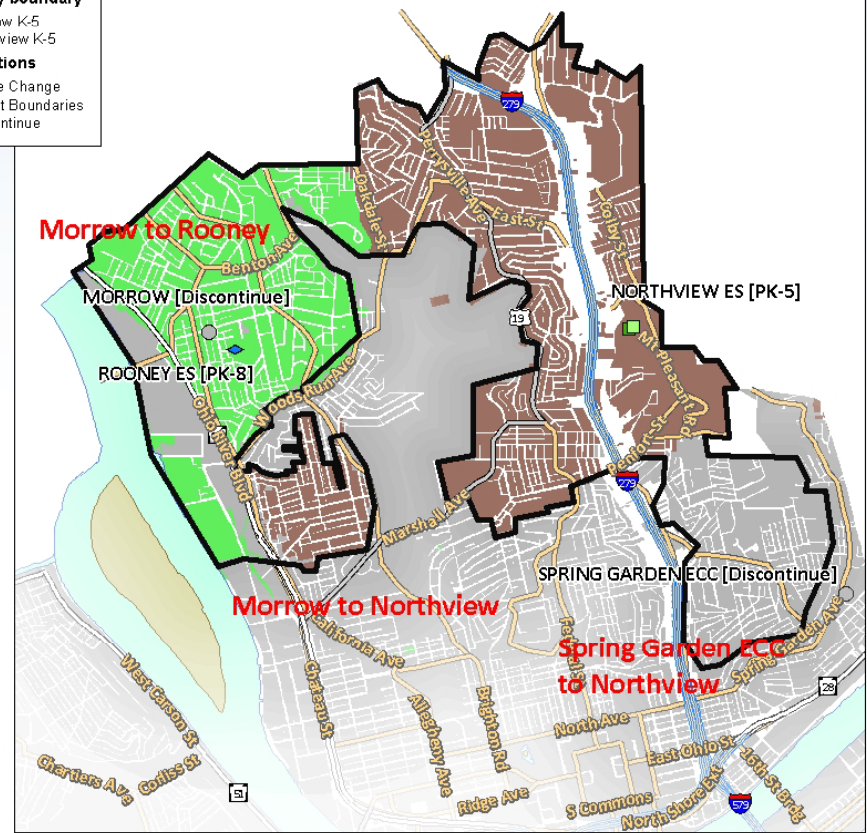
Current Boundary



Boundary Realignment



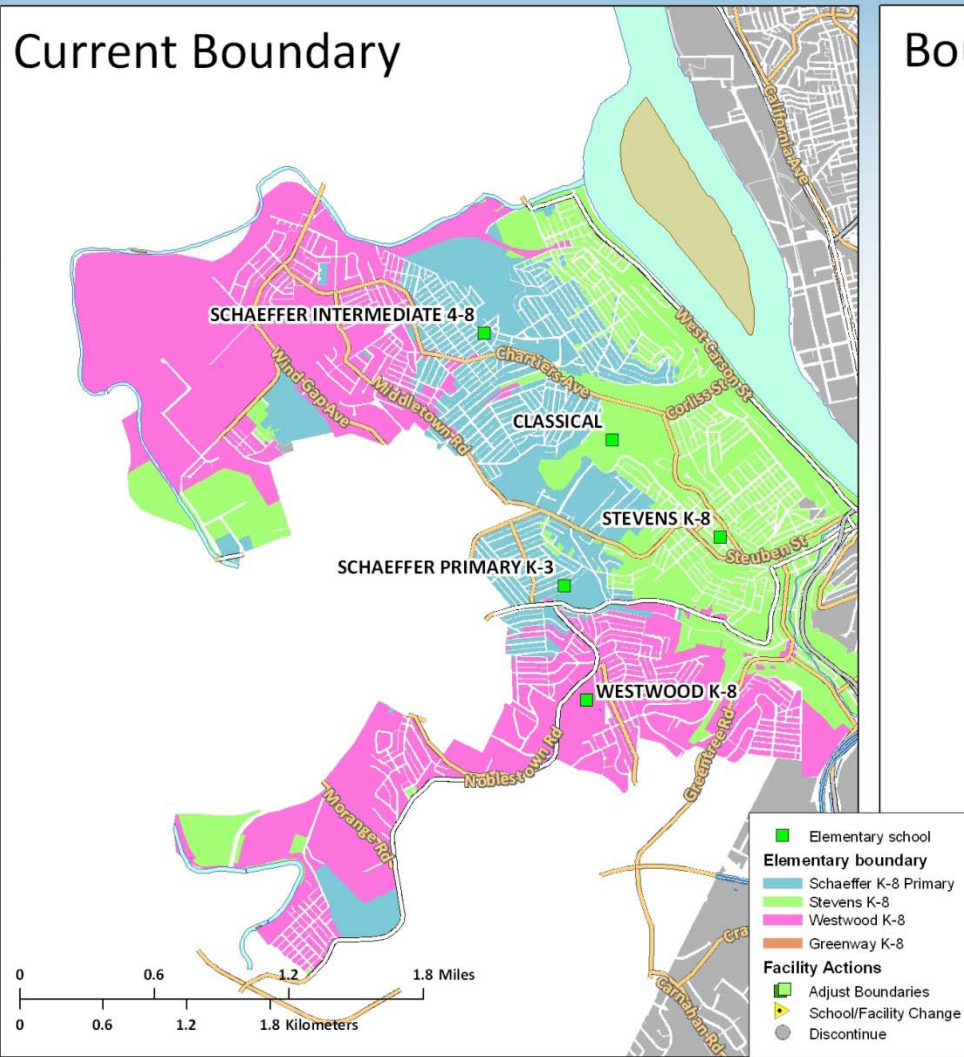
- Elementary school
- ▲ Middle
- ★ ECC
- Rooney Boundary
- Elementary boundary**
- Morrow K-5
- Northview K-5
- Facility Actions**
- ◆ Grade Change
- Adjust Boundaries
- Discontinue



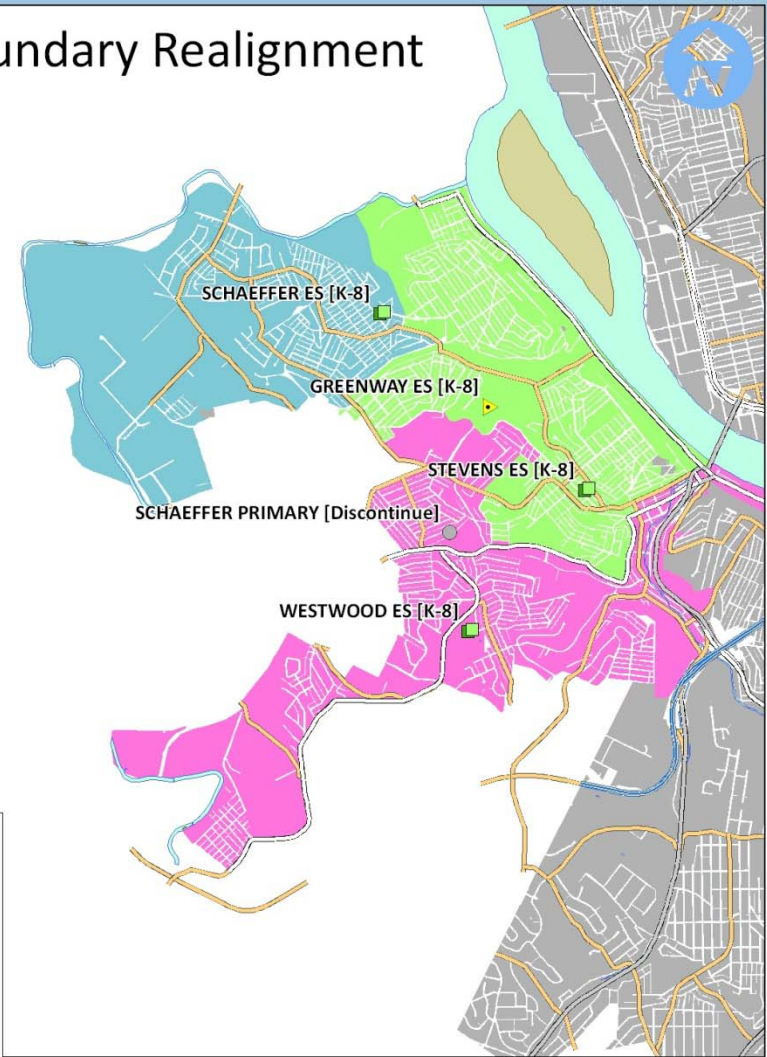
Morrow Boundary Realignment

Schaeffer, Stevens, and Westwood Boundary Realignment

Current Boundary



Boundary Realignment



Schaeffer Boundary Realignment

East Region

School by School Recommendations

26 Schools

East

ARSENAL PK-5

Grade Config: PK-5

Enrollment (2008-09)

Total Students:	308
PK	56
K-5	252
6-8	0
9-12	0

Capacity (2008-09)

Capacity	354
Excess Capacity	46

Facility Baseline Data

Year Built:	1930	Acres:	4.2
Gross SF:	42,139	Demountables:	0

Condition Assessment

Facility Condition Index (FCI):	48
Condition Level:	Moderate Reno

Recommendation:

Projected Enrollment (2018-19)

Total Students:	283
PK	60
K-5	223
6-8	0
9-12	0

Capacity (2018-19)

Capacity	354
Excess Capacity	71

Realignment

Grade Config	PK-5
Total Students:	445
PK	80
K-5	365
6-8	0
9-12	0

Capacity	354
Excess Capacity	-91

ARSENAL ES [PK-5]

Phase 2: 2012-2016

Configuration Action: Adjust Boundaries
Condition Action: Moderate Reno
Estimated Project Cost: \$6.6m

In Phase I: Woolsair to be discontinued, students to be assigned to Arsenal. Some McCleary students to be assigned to this building. Utilization of building to be modified to increase K-5 capacity and decrease 6-8 capacity.

East

ARSENAL 6-8

Grade Config: 6-8

Enrollment (2008-09)

Total Students:	412
PK	0
K-5	0
6-8	412
9-12	0

Capacity (2008-09)

Capacity	699
Excess Capacity	287

Facility Baseline Data

Year Built:	1930	Acres:	4.2
Gross SF:	125,823	Demountables:	0

Condition Assessment

Facility Condition Index (FCI):	44
Condition Level:	Moderate Reno

Recommendation:

Projected

Enrollment (2018-19)

Total Students:	261
PK	0
K-5	0
6-8	261
9-12	0

Capacity (2018-19)

Capacity	699
Excess Capacity	438

Realignment

Grade Config	6-8
Total Students:	261
PK	0
K-5	0
6-8	261
9-12	0

Capacity	699
Excess Capacity	438

ARSENAL MS [6-8]

Phase 2: 2012-2016

Configuration Action: No Change
Condition Action: Moderate Reno
Estimated Project Cost: \$20.9m

In Phase 1: Building to be reconfigured to increase K-5 capacity and decrease 6-8 capacity.

East

COLFAX K-8

Grade Config: **K-8**

Enrollment (2008-09)

Total Students: **645**

PK	0
K-5	469
6-8	176
9-12	0

Capacity (2008-09)

Capacity	755
Excess Capacity	110

Facility Baseline Data

Year Built:	1911	Acres:	3.1
Gross SF:	104,223	Demountables:	0

Condition Assessment

Facility Condition Index (FCI):	47
Condition Level:	Moderate Reno

Recommendation:

Projected

Enrollment (2018-19)

Total Students:	596
PK	0
K-5	456
6-8	140
9-12	0

Capacity (2018-19)

Capacity	755
Excess Capacity	159

Realignment

Grade Config	K-8
Total Students:	596
PK	0
K-5	456
6-8	140
9-12	0

Capacity	755
Excess Capacity	159

COLFAX ES [K-8]

Phase 2: 2012-2016

Configuration Action: No Change

Condition Action: Moderate Reno

Estimated Project Cost: \$16.4m

Remains a K-8 School.

East

DILWORTH PK-5

Grade Config: **PK-5**

Enrollment (2008-09)

Total Students: **398**

PK **55**

K-5 **343**

6-8 **0**

9-12 **0**

Capacity (2008-09)

Capacity **415**

Excess Capacity **17**

Facility Baseline Data

Year Built: **1914** Acres: **1.6**

Gross SF: **56,965** Demountables: **0**

Condition Assessment

Facility Condition Index (FCI): **50**

Condition Level: **Moderate Reno**

Recommendation:

Projected

Enrollment (2018-19)

Total Students: **420**

PK **60**

K-5 **360**

6-8 **0**

9-12 **0**

Capacity (2018-19)

Capacity **415**

Excess Capacity **-5**

Realignment

Grade Config **PK-5**

Total Students: **420**

PK **60**

K-5 **360**

6-8 **0**

9-12 **0**

Capacity **415**

Excess Capacity **-5**

DILWORTH ES [PK-5]

Phase 2: 2012-2016

Configuration Action: No Change

Condition Action: Moderate Reno

Estimated Project Cost: \$9.0m

Remains a PK-5 School.

East

FAISON PRIMARY

Grade Config: PK-4

Enrollment (2008-09)

Total Students:	523
PK	43
K-5	480
6-8	0
9-12	0

Capacity (2008-09)

Capacity	581
Excess Capacity	58

Facility Baseline Data

Year Built:	2004	Acres:	5.2
Gross SF:	74,615	Demountables:	0

Condition Assessment

Facility Condition Index (FCI):	0
Condition Level:	General Maint

Recommendation:

Projected Enrollment (2018-19)

Total Students:	513
PK	80
K-5	433
6-8	0
9-12	0

Capacity (2018-19)

Capacity	581
Excess Capacity	68

Realignment

Grade Config	PK-5
Total Students:	563
PK	80
K-5	483
6-8	0
9-12	0

Capacity	581
Excess Capacity	18

FAISON ES [PK-5]

Phase 4: 2016-2020

Configuration Action: Adjust Boundaries

Condition Action: General Maint

Estimated Project Cost: \$.0m

Enrollment to increase with addition of Grade 5 from Faison Intermediate in Phase 1.

East

FAISON K-8 INTERMEDIATE 5-8

Grade Config: 5-8

Enrollment (2008-09)

Total Students:	298
PK	35
K-5	80
6-8	183
9-12	0

Capacity (2008-09)

Capacity	409
Excess Capacity	111

Facility Baseline Data

Year Built:	1939	Acres:	5.9
Gross SF:	65,695	Demountables:	2

Condition Assessment

Facility Condition Index (FCI):	60
Condition Level:	Moderate Reno

Recommendation:

Projected Enrollment (2018-19)

Total Students:	200
PK	0
K-5	50
6-8	150
9-12	0

Capacity (2018-19)

Capacity	409
Excess Capacity	209

Realignment

Grade Config	na
Total Students:	0
PK	0
K-5	0
6-8	0
9-12	0

Capacity	0
Excess Capacity	0

FAISON INTERMEDIATE [Discontinue]
Phase 1: 2010-2014
Configuration Action: Discontinue
Condition Action: No Renovation Work
Cost Avoidance \$10.3m

Grade 6-8 to be assigned to Westinghouse. Grade 5 to Faison Primary.

East

FORT PITT PK-5

Grade Config: PK-5

Enrollment (2008-09)

Total Students:	348
PK	56
K-5	292
6-8	0
9-12	0

Capacity (2008-09)

Capacity	694
Excess Capacity	346

Facility Baseline Data

Year Built:	1906	Acres:	3.1
Gross SF:	88,760	Demountables:	0

Condition Assessment

Facility Condition Index (FCI):	58
Condition Level:	Moderate Reno

(See Fort Pitt Boundary Adjustment Map)

Recommendation:

Projected Enrollment (2018-19)

Total Students:	259
PK	60
K-5	199
6-8	0
9-12	0

Capacity (2018-19)

Capacity	694
Excess Capacity	435

Realignment

Grade Config	PK-5
Total Students:	540
PK	100
K-5	440
6-8	0
9-12	0

Capacity	694
Excess Capacity	154

FORT PITT ES [PK-5]

Phase 1: 2010-2014

Configuration Action: Adjust Boundaries

Condition Action: Moderate Reno

Estimated Project Cost: \$14.0m

**Fulton to be discontinued.
Students to be assigned to Fort Pitt.**

East

FULTON PK-5

Grade Config: PK-5

Enrollment (2008-09)

Total Students:	310
PK	15
K-5	295
6-8	0
9-12	0

Capacity (2008-09)

Capacity	389
Excess Capacity	79

Facility Baseline Data

Year Built:	1893	Acres:	1.3
Gross SF:	46,044	Demountables:	0

Condition Assessment

Facility Condition Index (FCI):	70
Condition Level:	Major Reno

(See Fort Pitt Boundary Adjustment Map)

Recommendation:

Projected

Enrollment (2018-19)

Total Students:	281
PK	40
K-5	241
6-8	0
9-12	0

Capacity (2018-19)

Capacity	389
Excess Capacity	108

Realignment

Grade Config	na
Total Students:	0
PK	0
K-5	0
6-8	0
9-12	0

Capacity	0
Excess Capacity	0

FULTON [Discontinue]

Phase 1: 2010-2014

Configuration Action: Discontinue

Condition Action: No Renovation Work

Cost Avoidance \$10.9m

**Fulton to be discontinued.
Students to be assigned to Fort Pitt.**

East

GREENFIELD K-8

Grade Config: **K-8**

Enrollment (2008-09)

Total Students:	420
PK	0
K-5	266
6-8	154
9-12	0

Capacity (2008-09)

Capacity	485
Excess Capacity	65

Facility Baseline Data

Year Built:	1921	Acres:	8.5
Gross SF:	88,228	Demountables:	0

Condition Assessment

Facility Condition Index (FCI):	52
Condition Level:	Moderate Reno

Recommendation:

Projected

Enrollment (2018-19)

Total Students:	315
PK	0
K-5	207
6-8	108
9-12	0

Capacity (2018-19)

Capacity	485
Excess Capacity	170

Realignment

Grade Config	K-8
Total Students:	315
PK	0
K-5	207
6-8	108
9-12	0

Capacity	485
Excess Capacity	170

GREENFIELD [K-8]

Phase 2: 2012-2016

Configuration Action: No Change

Condition Action: Moderate Reno

Estimated Project Cost: \$13.9m

Remains a K-8 School.

East

HOMEWOOD ECC

Grade Config: PK

Enrollment (2008-09)

Total Students:	179
PK	179
K-5	0
6-8	0
9-12	0

Capacity (2008-09)

Capacity	183
Excess Capacity	4

Facility Baseline Data

Year Built:	1901	Acres:	1.5
Gross SF:	33,300	Demountables:	0

Condition Assessment

Facility Condition Index (FCI):	73
Condition Level:	Major Reno

Recommendation:

Projected

Enrollment (2018-19)

Total Students:	200
PK	200
K-5	0
6-8	0
9-12	0

Capacity (2018-19)

Capacity	183
Excess Capacity	-17

Realignment

Grade Config	na
Total Students:	0
PK	0
K-5	0
6-8	0
9-12	0

Capacity	0
Excess Capacity	0

HOMEWOOD ECC [Discontinue]

Phase 2: 2012-2016

Configuration Action: Discontinue

Condition Action: No Renovation Work

Cost Avoidance \$7.9m

**Students to be assigned to
Lincoln Intermediate/Belmar
which becomes an ECC.**

East

LIBERTY K-5

Grade Config: **K-5**

Enrollment (2008-09)

Total Students: **399**

PK **0**

K-5 **399**

6-8 **0**

9-12 **0**

Capacity (2008-09)

Capacity **420**

Excess Capacity **21**

Facility Baseline Data

Year Built: **1911** Acres: **1.9**

Gross SF: **52,071** Demountables: **0**

Condition Assessment

Facility Condition Index (FCI): **48**

Condition Level: **Moderate Reno**

Recommendation:

Projected

Enrollment (2018-19)

Total Students: **400**

PK **0**

K-5 **400**

6-8 **0**

9-12 **0**

Capacity (2018-19)

Capacity **420**

Excess Capacity **20**

Realignment

Grade Config **K-5**

Total Students: **400**

PK **0**

K-5 **400**

6-8 **0**

9-12 **0**

Capacity **420**

Excess Capacity **20**

LIBERTY ES [K-5]

Phase 2: 2012-2016

Configuration Action: No Change

Condition Action: Moderate Reno

Estimated Project Cost: \$8.2m

Remains a K-5 School.

East

LINCOLN PRIMARY K-4

Grade Config: **K-4**

Enrollment (2008-09)

Total Students: **321**

PK **0**

K-5 **321**

6-8 **0**

9-12 **0**

Capacity (2008-09)

Capacity **483**

Excess Capacity **162**

Facility Baseline Data

Year Built: **1930** Acres: **1.6**

Gross SF: **44,496** Demountables: **0**

Condition Assessment

Facility Condition Index (FCI): **49**

Condition Level: **Moderate Reno**

Recommendation:

Projected

Enrollment (2018-19)

Total Students: **284**

PK **0**

K-5 **284**

6-8 **0**

9-12 **0**

Capacity (2018-19)

Capacity **483**

Excess Capacity **199**

Realignment

Grade Config **K-5**

Total Students: **322**

PK **0**

K-5 **322**

6-8 **0**

9-12 **0**

Capacity **483**

Excess Capacity **161**

LINCOLN ES [K-5]

Phase 2: 2012-2016

Configuration Action: Grade Change

Condition Action: Moderate Reno

Estimated Project Cost: \$7.0m

Enrollment to increase with addition of Grade 5 students from Lincoln Intermediate/Belmar.

East

LINCOLN INTERMEDIATE 5-8

Grade Config: 5-8

Enrollment (2008-09)

Total Students:	215
PK	0
K-5	51
6-8	164
9-12	0

Capacity (2008-09)

Capacity	363
Excess Capacity	148

Facility Baseline Data

Year Built:	1900	Acres:	1.8
Gross SF:	58,832	Demountables:	0

Condition Assessment

Facility Condition Index (FCI):	56
Condition Level:	Moderate Reno

Recommendation:

Projected

Enrollment (2018-19)

Total Students:	154
PK	0
K-5	38
6-8	115
9-12	0

Capacity (2018-19)

Capacity	363
Excess Capacity	209

Realignment

Grade Config	PK
Total Students:	300
PK	300
K-5	0
6-8	0
9-12	0

Capacity	363
Excess Capacity	63

LINCOLN/BELMAR [New ECC]

Phase 1: 2010-2014

Configuration Action: School/Facility Change

Condition Action: Moderate Reno

Estimated Project Cost: \$9.3m

Converted to ECC. Grade 6-8 to be assigned to Westinghouse. Grade 5 to Lincoln Primary.

East

LINDEN K-5

Grade Config: **K-5**

Enrollment (2008-09)

Total Students: **415**

PK **0**

K-5 **415**

6-8 **0**

9-12 **0**

Capacity (2008-09)

Capacity **426**

Excess Capacity **11**

Facility Baseline Data

Year Built: **1903** Acres: **2.6**

Gross SF: **60,252** Demountables: **0**

Condition Assessment

Facility Condition Index (FCI): **70**

Condition Level: **Major Reno**

Recommendation:

Projected

Enrollment (2018-19)

Total Students: **400**

PK **0**

K-5 **400**

6-8 **0**

9-12 **0**

Capacity (2018-19)

Capacity **426**

Excess Capacity **26**

Realignment

Grade Config **K-5**

Total Students: **400**

PK **0**

K-5 **400**

6-8 **0**

9-12 **0**

Capacity **426**

Excess Capacity **26**

LINDEN ES [K-5]

Phase 2: 2012-2016

Configuration Action: No Change

Condition Action: Major Reno

Estimated Project Cost: \$14.2m

Remains a K-5 School.

East

MCCLEARY ECC

Grade Config: PK

Enrollment (2008-09)

Total Students: 111
 PK 111
 K-5 0
 6-8 0
 9-12 0

Capacity (2008-09)

Capacity 140
 Excess Capacity 29

Facility Baseline Data

Year Built: 1900 Acres: 0.7
 Gross SF: 25,097 Demountables: 1

Condition Assessment

Facility Condition Index (FCI): 75
 Condition Level: Major Reno

Recommendation:

Projected

Enrollment (2018-19)

Total Students: 120
 PK 120
 K-5 0
 6-8 0
 9-12 0

Capacity (2018-19)

Capacity 140
 Excess Capacity 20

Realignment

Grade Config na
 Total Students: 0
 PK 0
 K-5 0
 6-8 0
 9-12 0

Capacity 0
 Excess Capacity 0

MCCLEARY [Discontinue]

Phase 1: 2010-2014

Configuration Action: Discontinue

Condition Action: No Renovation Work

Cost Avoidance \$5.9m

Students to be assigned to Arsenal and Lincoln Intermediate/Belmar (converted to ECC).

East

MIFFLIN PK-8

Grade Config: **PK-8**

Enrollment (2008-09)

Total Students:	384
PK	21
K-5	245
6-8	118
9-12	0

Capacity (2008-09)

Capacity	573
Excess Capacity	189

Facility Baseline Data

Year Built:	1932	Acres:	7.0
Gross SF:	79,049	Demountables:	0

Condition Assessment

Facility Condition Index (FCI):	40
Condition Level:	Moderate Reno

Recommendation:

Projected Enrollment (2018-19)

Total Students:	329
PK	20
K-5	233
6-8	76
9-12	0

Capacity (2018-19)

Capacity	573
Excess Capacity	244

Realignment

Grade Config	PK-8
Total Students:	329
PK	20
K-5	233
6-8	76
9-12	0

Capacity	573
Excess Capacity	244

MIFFLIN ES [PK-8]

Phase 2: 2012-2016

Configuration Action: No Change

Condition Action: Moderate Reno

Estimated Project Cost: \$12.5m

Remains a PK-8 School.

East

MILLER at McKelvy PK-8

Grade Config: PK-8

Enrollment (2008-09)

Total Students:	301
PK	16
K-5	203
6-8	82
9-12	0

Capacity (2008-09)

Capacity	524
Excess Capacity	223

Facility Baseline Data

Year Built:	1906	Acres:	4.4
Gross SF:	60,691	Demountables:	0

Condition Assessment

Facility Condition Index (FCI):	45
Condition Level:	Moderate Reno

(See Vann Boundary Adjustment Map)

Recommendation:

Projected

Enrollment (2018-19)

Total Students:	141
PK	20
K-5	121
6-8	0
9-12	0

Capacity (2018-19)

Capacity	524
Excess Capacity	383

Realignment

Grade Config	PK-5
Total Students:	214
PK	20
K-5	194
6-8	0
9-12	0

Capacity	524
Excess Capacity	310

MILLER at McKelvy ES [PK-5]

Phase 2: 2012-2016

Configuration Action: Grade Change
Condition Action: Moderate Reno
Estimated Project Cost: \$9.6m

Phase I: Board Approved:
Changing from K-8 to K-5 in
2009-10 and assigning 6-8
students to Univ Prep. Facility

Plan: Vann is to be
discontinued and students
assigned to Miller and Weil.

East

MINADEO PK-5

Grade Config: PK-5

Enrollment (2008-09)

Total Students: 609

PK 52

K-5 557

6-8 0

9-12 0

Capacity (2008-09)

Capacity 653

Excess Capacity 44

Facility Baseline Data

Year Built: 1957 Acres: 4.1

Gross SF: 81,160 Demountables: 0

Condition Assessment

Facility Condition Index (FCI): 58

Condition Level: Moderate Reno

Recommendation:

Projected Enrollment (2018-19)

Total Students: 555

PK 60

K-5 495

6-8 0

9-12 0

Capacity (2018-19)

Capacity 653

Excess Capacity 98

Realignment

Grade Config PK-5

Total Students: 555

PK 60

K-5 495

6-8 0

9-12 0

Capacity 653

Excess Capacity 98

MINADEO ES [PK-5]

Phase 2: 2012-2016

Configuration Action: No Change

Condition Action: Moderate Reno

Estimated Project Cost: \$12.8m

Remains a PK-5 School.

East

MONTESSORI K-8

Grade Config: K-8

Enrollment (2008-09)

Total Students:	278
PK	0
K-5	215
6-8	63
9-12	0

Capacity (2008-09)

Capacity	374
Excess Capacity	96

Facility Baseline Data

Year Built:	1900	Acres:	2.7
Gross SF:	45,527	Demountables:	1

Condition Assessment

Facility Condition Index (FCI):	85
Condition Level:	Replace

Projected Enrollment (2018-19)

Total Students:	285
PK	0
K-5	210
6-8	75
9-12	0

Capacity (2018-19)

Capacity	374
Excess Capacity	89

Recommendation:

Realignment

Grade Config	K-5
Total Students:	210
PK	0
K-5	210
6-8	0
9-12	0

Capacity	374
Excess Capacity	164

MONTESSORI ES [K-5]

Phase 1: 2010-2014

Configuration Action: Grade Change

Condition Action: Major Reno

Estimated Project Cost: \$14.3m

Change grade configuration from K-8 to K-5. 6-8 students to be assigned to their neighborhood school or other magnet school.

East

REIZENSTEIN ECC

Grade Config: PK

Enrollment (2008-09)

Total Students:	51
PK	51
K-5	0
6-8	0
9-12	0

Capacity (2008-09)

Capacity	112
Excess Capacity	61

Facility Baseline Data

Year Built:	1975	Acres:	12.9
Gross SF:	232,735	Demountables:	0

Condition Assessment

Facility Condition Index (FCI):	55
Condition Level:	Moderate Reno

Recommendation:

Projected Enrollment (2018-19)

Total Students:	60
PK	60
K-5	0
6-8	0
9-12	0

Capacity (2018-19)

Capacity	112
Excess Capacity	52

Realignment

Grade Config	PK
Total Students:	60
PK	60
K-5	0
6-8	0
9-12	0

Capacity	112
Excess Capacity	52

REIZENSTEIN ECC [PK]

Phase 1: 2010-2014

Configuration Action: No Change

Condition Action: Moderate Reno

Estimated Project Cost: See IB at Reizenstein

Remains an ECC. Part of overall Reizenstein renovation project.

East

ROGERS CAPA 6-8

Grade Config: 6-8

Enrollment (2008-09)

Total Students: 316

PK 0

K-5 0

6-8 316

9-12 0

Capacity (2008-09)

Capacity 282

Excess Capacity -34

Facility Baseline Data

Year Built: 1915 Acres: 2.7

Gross SF: 60,598 Demountables: 0

Condition Assessment

Facility Condition Index (FCI): 94

Condition Level: **Replace**

Recommendation:

Projected

Enrollment (2018-19)

Total Students: 0

PK 0

K-5 0

6-8 0

9-12 0

Capacity (2018-19)

Capacity 282

Excess Capacity 282

Realignment

Grade Config na

Total Students: 0

PK 0

K-5 0

6-8 0

9-12 0

Capacity 0

Excess Capacity 0

ROGERS CAPA [Discontinue]

Phase 1: 2010-2014

Configuration Action: Discontinue

Condition Action: No Renovation Work

Cost Avoidance \$20.1m

Board Approved: Students at

Rogers CAPA will move to

Pittsburgh CAPA HS.

East

STERRETT 6-8

Grade Config: **6-8**

Enrollment (2008-09)

Total Students:	377
PK	0
K-5	0
6-8	377
9-12	0

Capacity (2008-09)

Capacity	368
Excess Capacity	-9

Facility Baseline Data

Year Built:	1899	Acres:	2.3
Gross SF:	68,458	Demountables:	0

Condition Assessment

Facility Condition Index (FCI):	46
Condition Level:	Moderate Reno

Recommendation:

Projected Enrollment (2018-19)

Total Students:	390
PK	0
K-5	0
6-8	390
9-12	0

Capacity (2018-19)

Capacity	368
Excess Capacity	-22

Realignment

Grade Config	6-8
Total Students:	390
PK	0
K-5	0
6-8	390
9-12	0

Capacity	368
Excess Capacity	-22

STERRETT MS [6-8]

Phase 2: 2012-2016

Configuration Action: No Change

Condition Action: Moderate Reno

Estimated Project Cost: \$11.3m

Remains a 6-8 School.

East

SUNNYSIDE K-8

Grade Config: **K-8**

Enrollment (2008-09)

Total Students:	388
PK	0
K-5	236
6-8	152
9-12	0

Capacity (2008-09)

Capacity	484
Excess Capacity	96

Facility Baseline Data

Year Built:	1954	Acres:	14.5
Gross SF:	68,160	Demountables:	1

Condition Assessment

Facility Condition Index (FCI):	47
Condition Level:	Moderate Reno

Recommendation:

Projected

Enrollment (2018-19)

Total Students:	241
PK	0
K-5	163
6-8	78
9-12	0

Capacity (2018-19)

Capacity	484
Excess Capacity	243

Realignment

Grade Config	K-8
Total Students:	241
PK	0
K-5	163
6-8	78
9-12	0

Capacity	484
Excess Capacity	243

SUNNYSIDE ES [K-8]

Phase 2: 2012-2016

Configuration Action: No Change
Condition Action: Moderate Reno
Estimated Project Cost: \$10.7m

Remains a K-8 School.

East

VANN K-8

Grade Config: **K-8**

Enrollment (2008-09)

Total Students:	240
PK	0
K-5	175
6-8	65
9-12	0

Capacity (2008-09)

Capacity	427
Excess Capacity	187

Facility Baseline Data

Year Built:	1914	Acres:	1.9
Gross SF:	68,054	Demountables:	0

Condition Assessment

Facility Condition Index (FCI):	60
Condition Level:	Moderate Reno

(See Vann Boundary Adjustment Map)

Recommendation:

Projected

Enrollment (2018-19)

Total Students:	146
PK	0
K-5	146
6-8	0
9-12	0

Capacity (2018-19)

Capacity	427
Excess Capacity	281

Realignment

Grade Config	na
Total Students:	0
PK	0
K-5	0
6-8	0
9-12	0

Capacity	0
Excess Capacity	0

VANN [Discontinue]

Phase 1: 2010-2014

Configuration Action: Discontinue

Condition Action: No Renovation Work

Cost Avoidance \$10.7m

Students to be assigned to Miller and Weil.

East

WEIL PK-8

Grade Config: **PK-8**

Enrollment (2008-09)

Total Students:	351
PK	44
K-5	219
6-8	88
9-12	0

Capacity (2008-09)

Capacity	550
Excess Capacity	199

Facility Baseline Data

Year Built:	1942	Acres:	1.7
Gross SF:	83,552	Demountables:	0

Condition Assessment

Facility Condition Index (FCI):	48
Condition Level:	Moderate Reno

(See Vann Boundary Adjustment Map)

Recommendation:

Projected

Enrollment (2018-19)

Total Students:	298
PK	60
K-5	189
6-8	49
9-12	0

Capacity (2018-19)

Capacity	550
Excess Capacity	252

Realignment

Grade Config	PK-8
Total Students:	371
PK	60
K-5	262
6-8	49
9-12	0

Capacity	550
Excess Capacity	179

WEIL ES [PK-8]

Phase 2: 2012-2016

Configuration Action: Adjust Boundaries

Condition Action: Moderate Reno

Estimated Project Cost: \$13.2m

Additional students to be assigned from discontinued Vann. Vann students to be assigned to Weil and Miller.

East

WOOLSLAIR K-5

Grade Config: K-5

Enrollment (2008-09)

Total Students: 209

PK	0
K-5	209
6-8	0
9-12	0

Capacity (2008-09)

Capacity	317
Excess Capacity	108

Facility Baseline Data

Year Built:	1897	Acres:	0.8
Gross SF:	40,421	Demountables:	0

Condition Assessment

Facility Condition Index (FCI):	45
Condition Level:	Moderate Reno

(See Fort Pitt Boundary Adjustment Map)

Recommendation:

Projected Enrollment (2018-19)

Total Students:	142
PK	0
K-5	142
6-8	0
9-12	0

Capacity (2018-19)

Capacity	317
Excess Capacity	175

Realignment

Grade Config	na
Total Students:	0
PK	0
K-5	0
6-8	0
9-12	0

Capacity	0
Excess Capacity	0

WOOLSLAIR [Discontinue]

Phase 1: 2010-2014

Configuration Action: Discontinue

Condition Action: No Renovation Work

Cost Avoidance \$6.4m

Students to be assigned to Arsenal PK-5.

EAST Boundary Adjustments

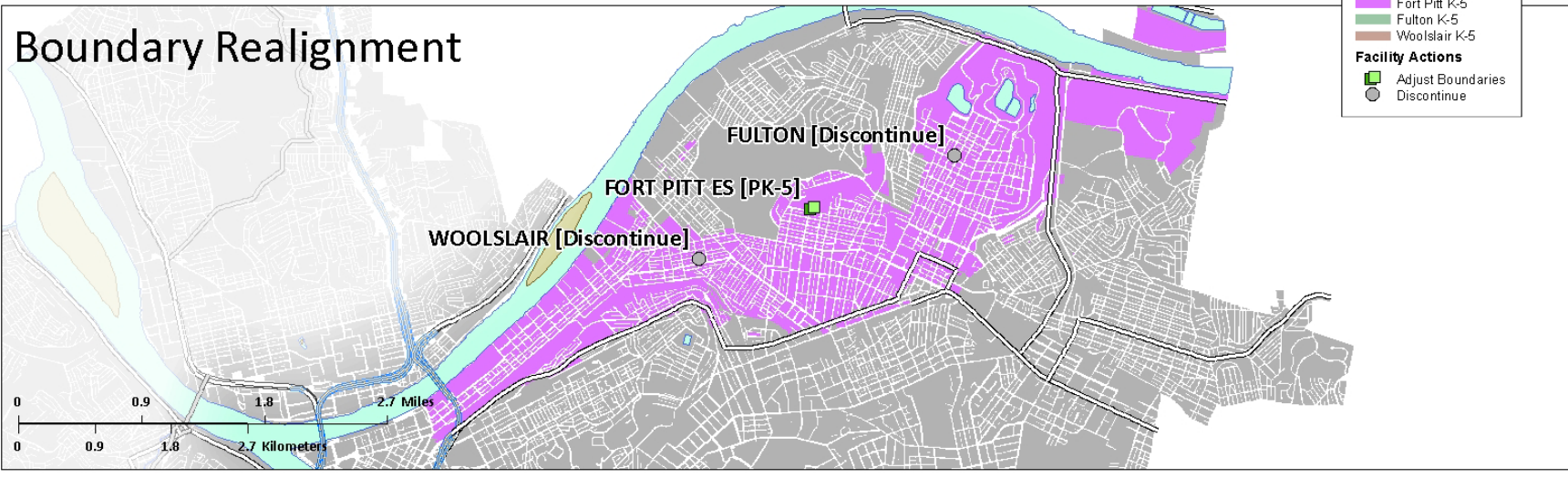
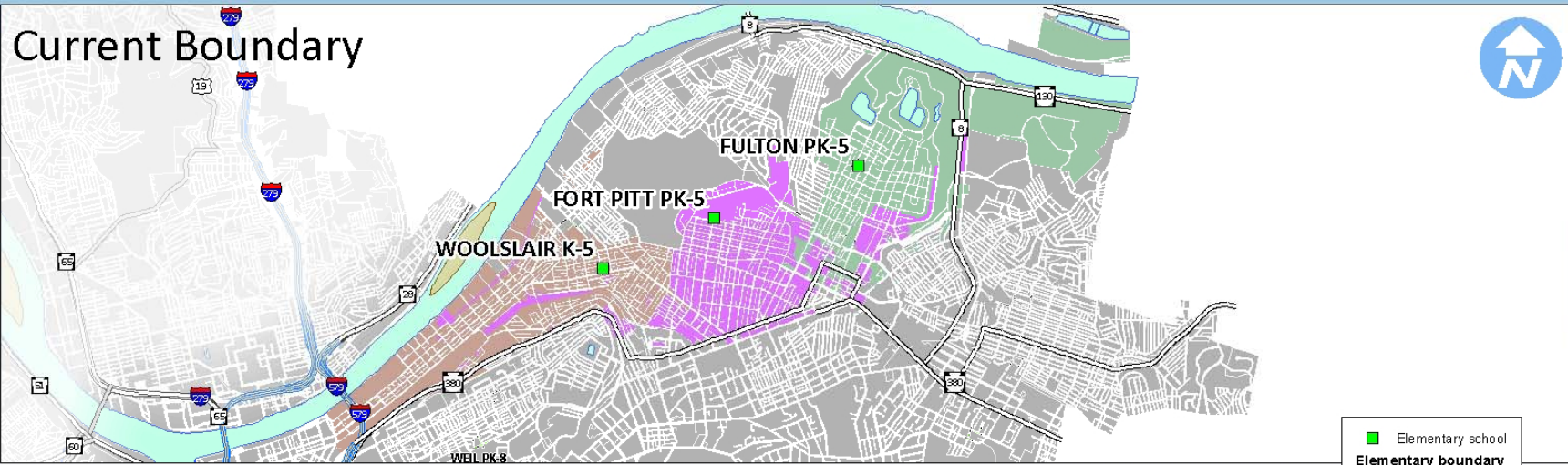
Fort Pitt

Fort Pitt, Woolslair, Fulton

Vann

Vann, Miller, Weil

Fort Pitt Boundary Realignment

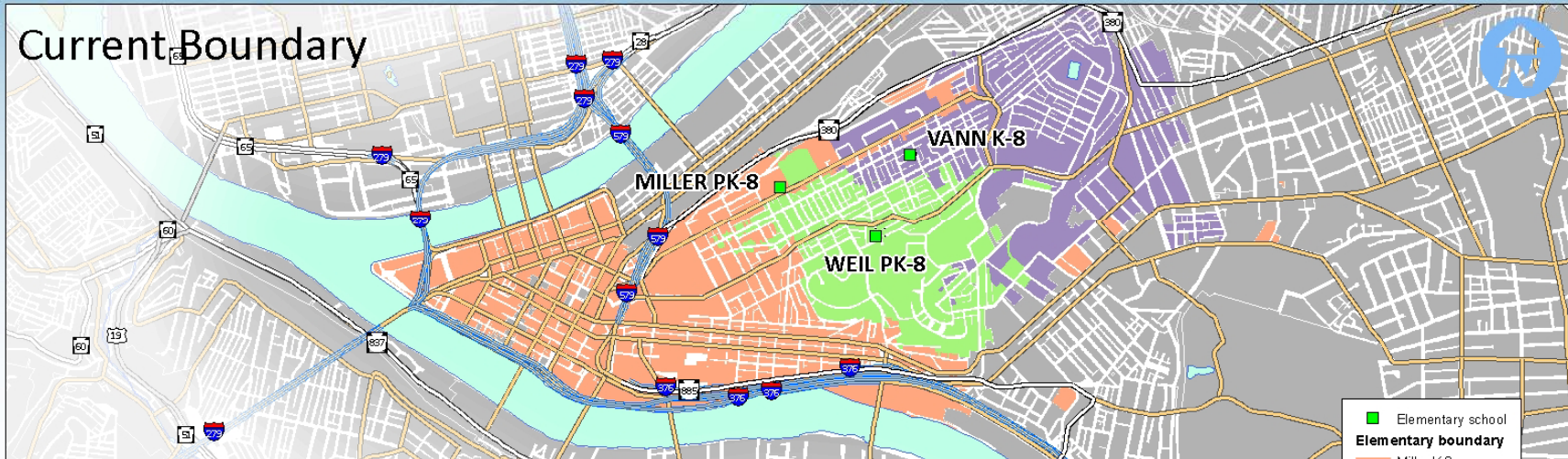


- Elementary school
- Elementary boundary**
- Fort Pitt K-5
- Fulton K-5
- Woolslair K-5
- Facility Actions**
- Adjust Boundaries
- Discontinue

Fort Pitt Boundary Realignment

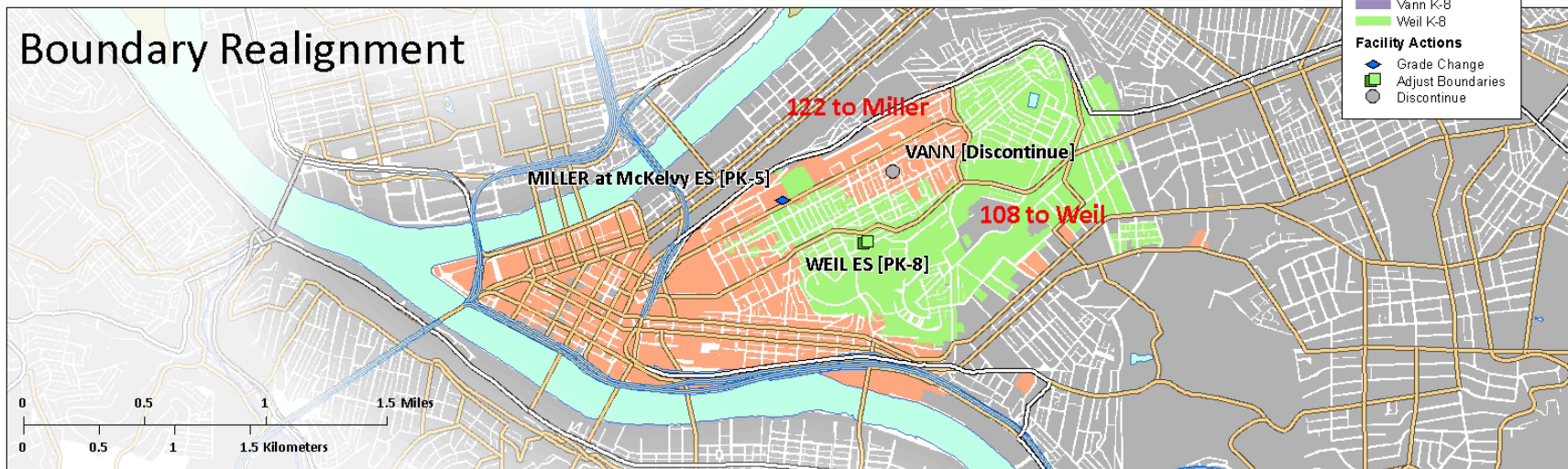
Vann Boundary Realignment

Current Boundary



- Elementary school
- Elementary boundary**
- Miller K-8
- Vann K-8
- Weil K-8
- Facility Actions**
- ◆ Grade Change
- Adjust Boundaries
- Discontinue

Boundary Realignment



Vann Boundary Realignment

South Region

School by School Recommendations

17 Schools

South

ARLINGTON PRIMARY PK-8 (PK-2)

Grade Config: PK-2

Enrollment (2008-09)

Total Students:	163
PK	61
K-5	102
6-8	0
9-12	0

Capacity (2008-09)

Capacity	323
Excess Capacity	160

Facility Baseline Data

Year Built:	1962	Acres:	9.3
Gross SF:	49,672	Demountables:	0

Condition Assessment

Facility Condition Index (FCI):	54
Condition Level:	Moderate Reno

Recommendation:

Projected Enrollment (2018-19)

Total Students:	210
PK	80
K-5	130
6-8	0
9-12	0

Capacity (2018-19)

Capacity	323
Excess Capacity	113

Realignment

Grade Config	na
Total Students:	0
PK	0
K-5	0
6-8	0
9-12	0

Capacity	0
Excess Capacity	0

ARLINGTON PRIMARY [Discontinue]

Phase 1: 2010-2014

Configuration Action: Discontinue

Condition Action: No Renovation Work

Cost Avoidance \$7.8m

Students to be assigned to Arlington Intermediate.

South

ARLINGTON INTERMEDIATE K-8 (3-8)

Grade Config: 3-8

Enrollment (2008-09)

Total Students:	314
PK	0
K-5	189
6-8	125
9-12	0

Capacity (2008-09)

Capacity	502
Excess Capacity	188

Facility Baseline Data

Year Built:	1961	Acres:	9.3
Gross SF:	25,310	Demountables:	0

Condition Assessment

Facility Condition Index (FCI):	60
Condition Level:	Moderate Reno

Recommendation:

Projected

Enrollment (2018-19)

Total Students:	202
PK	0
K-5	115
6-8	87
9-12	0

Capacity (2018-19)

Capacity	502
Excess Capacity	300

Realignment

Grade Config	PK-8
Total Students:	412
PK	80
K-5	245
6-8	87
9-12	0

Capacity	502
Excess Capacity	90

ARLINGTON ES [PK-8]

Phase 1: 2010-2014

Configuration Action: Grade Change

Condition Action: Moderate Reno

Estimated Project Cost: \$4.0m

Enrollment to increase with addition of Arlington Primary (PK-2) students.

South

BANKSVILLE PK-5

Grade Config: PK-5

Enrollment (2008-09)

Total Students:	224
PK	19
K-5	205
6-8	0
9-12	0

Capacity (2008-09)

Capacity	294
Excess Capacity	70

Facility Baseline Data

Year Built:	1936	Acres:	3.8
Gross SF:	32,600	Demountables:	0

Condition Assessment

Facility Condition Index (FCI):	51
Condition Level:	Moderate Reno

(See Beechwood/Banksville Boundary Adjustment Map)

Recommendation:

Projected

Enrollment (2018-19)

Total Students:	197
PK	20
K-5	177
6-8	0
9-12	0

Capacity (2018-19)

Capacity	294
Excess Capacity	97

Realignment

Grade Config	PK-5
Total Students:	240
PK	20
K-5	220
6-8	0
9-12	0

Capacity	294
Excess Capacity	54

BANKSVILLE ES [PK-5]

Phase 2: 2012-2016

Configuration Action: Adjust Boundaries

Condition Action: Moderate Reno

Estimated Project Cost: \$5.1m

Banksville and Beechwood boundary to be realigned to reduce the overflow at Beechwood in Phase I.

South

BEECHWOOD K-5

Grade Config: PK-5

Enrollment (2008-09)

Total Students:	410
PK	59
K-5	351
6-8	0
9-12	0

Capacity (2008-09)

Capacity	358
Excess Capacity	-52

Facility Baseline Data

Year Built:	1908	Acres:	4.8
Gross SF:	61,800	Demountables:	1

Condition Assessment

Facility Condition Index (FCI):	54
Condition Level:	Moderate Reno

(See Beechwood/Banksville Boundary Adjustment Map)

Recommendation:

Projected Enrollment (2018-19)

Total Students:	401
PK	60
K-5	341
6-8	0
9-12	0

Capacity (2018-19)

Capacity	358
Excess Capacity	-43

Realignment

Grade Config	PK-5
Total Students:	358
PK	60
K-5	298
6-8	0
9-12	0

Capacity	358
Excess Capacity	0

BEECHWOOD ES [PK-5]

Phase 2: 2012-2016

Configuration Action: Adjust Boundaries

Condition Action: Moderate Reno

Estimated Project Cost: \$9.7m

Banksville and Beechwood boundary to be realigned to reduce the overflow at Beechwood in Phase I.

South

BON AIR ECC

Grade Config: PK

Enrollment (2008-09)

Total Students:	61
PK	61
K-5	0
6-8	0
9-12	0

Capacity (2008-09)

Capacity	124
Excess Capacity	63

Facility Baseline Data

Year Built:	1955	Acres:	0.3
Gross SF:	14,563	Demountables:	0

Condition Assessment

Facility Condition Index (FCI):	82
Condition Level:	Replace

Recommendation:

Projected

Enrollment (2018-19)

Total Students:	60
PK	60
K-5	0
6-8	0
9-12	0

Capacity (2018-19)

Capacity	124
Excess Capacity	64

Realignment

Grade Config	PK
Total Students:	60
PK	60
K-5	0
6-8	0
9-12	0

Capacity	124
Excess Capacity	64

BON AIR ECC

Phase 4: 2016-2019

Configuration Action: No Change

Condition Action: Major Reno

Cost \$4.6m

Remains an ECC.

South

BROOKLINE K-8

Grade Config: **K-8**

Enrollment (2008-09)

Total Students:	563
PK	0
K-5	378
6-8	185
9-12	0

Capacity (2008-09)

Capacity	543
Excess Capacity	-20

Facility Baseline Data

Year Built:	1907	Acres:	3.5
Gross SF:	63,171	Demountables:	4

Condition Assessment

Facility Condition Index (FCI):	25
Condition Level:	Minor Reno

(See Carmalt Boundary Adjustment Map)

Recommendation:

Projected

Enrollment (2018-19)

Total Students:	507
PK	0
K-5	366
6-8	141
9-12	0

Capacity (2018-19)

Capacity	543
Excess Capacity	36

Realignment

Grade Config	K-8
Total Students:	411
PK	0
K-5	270
6-8	141
9-12	0

Capacity	543
Excess Capacity	132

BROOKLINE ES [K-8]

Phase 4: 2016-2020

Configuration Action: Adjust Boundaries

Condition Action: Minor Reno

Estimated Project Cost: \$5.0m

Adjust Brookline attendance boundary and assign some students to Carmalt in Phase 1.

South

CARMALT PK-8

Grade Config: **PK-8**

Enrollment (2008-09)

Total Students:	588
PK	21
K-5	386
6-8	181
9-12	0

Capacity (2008-09)

Capacity	777
Excess Capacity	189

Facility Baseline Data

Year Built:	1935	Acres:	12.7
Gross SF:	109,888	Demountables:	0

Condition Assessment

Facility Condition Index (FCI):	53
Condition Level:	Moderate Reno

(See Carmalt Boundary Adjustment Map)

Recommendation:

Projected Enrollment (2018-19)

Total Students:	574
PK	20
K-5	362
6-8	192
9-12	0

Capacity (2018-19)

Capacity	777
Excess Capacity	203

Realignment

Grade Config	PK-8
Total Students:	670
PK	20
K-5	458
6-8	192
9-12	0

Capacity	777
Excess Capacity	107

CARMALT ES [PK-8]

Phase 1: 2010-2014

Configuration Action: Adjust Boundaries

Condition Action: Moderate Reno

Estimated Project Cost: \$17.3m

Enrollment to increase with the assignment of some students from Brookline.

South

CONCORD K-5

Grade Config: K-5

Enrollment (2008-09)

Total Students:	321
PK	0
K-5	321
6-8	0
9-12	0

Capacity (2008-09)

Capacity	533
Excess Capacity	212

Facility Baseline Data

Year Built:	1938	Acres:	2.7
Gross SF:	33,540	Demountables:	1

Condition Assessment

Facility Condition Index (FCI):	15
Condition Level:	General Maint

(See Roosevelt Boundary Adjustment Map)

Recommendation:

Projected

Enrollment (2018-19)

Total Students:	327
PK	0
K-5	327
6-8	0
9-12	0

Capacity (2018-19)

Capacity	533
Excess Capacity	206

Realignment

Grade Config	K-5
Total Students:	393
PK	0
K-5	393
6-8	0
9-12	0

Capacity	533
Excess Capacity	140

CONCORD ES [K-5]

Phase 4: 2016-2020

Configuration Action: Grade Change

Condition Action: General Maint

Estimated Project Cost: \$.0m

Roosevelt PK/K-1 to be discontinued. Boundary to be adjusted between Roosevelt 2-5 and Concord in Phase I.

South

GRANDVIEW K-5

Grade Config: K-5

Enrollment (2008-09)

Total Students:	327
PK	0
K-5	327
6-8	0
9-12	0

Capacity (2008-09)

Capacity	340
Excess Capacity	13

Facility Baseline Data

Year Built:	1961	Acres:	2.2
Gross SF:	45,059	Demountables:	1

Condition Assessment

Facility Condition Index (FCI):	68
Condition Level:	Major Reno

Recommendation:

Projected Enrollment (2018-19)

Total Students:	216
PK	0
K-5	216
6-8	0
9-12	0

Capacity (2018-19)

Capacity	340
Excess Capacity	124

Realignment

Grade Config	K-5
Total Students:	216
PK	0
K-5	216
6-8	0
9-12	0

Capacity	340
Excess Capacity	124

GRANDVIEW ES [K-5]

Phase 2: 2012-2016

Configuration Action: No Program Change

Condition Action: Major Reno

Estimated Project Cost: \$10.6m

Remains a K-5 School.

South

MURRAY PK-8

Grade Config: **PK-8**

Enrollment (2008-09)

Total Students:	392
PK	16
K-5	279
6-8	97
9-12	0

Capacity (2008-09)

Capacity	516
Excess Capacity	124

Facility Baseline Data

Year Built:	1956	Acres:	4.9
Gross SF:	78,168	Demountables:	2

Condition Assessment

Facility Condition Index (FCI):	40
Condition Level:	Moderate Reno

Recommendation:

Projected Enrollment (2018-19)

Total Students:	315
PK	20
K-5	224
6-8	71
9-12	0

Capacity (2018-19)

Capacity	516
Excess Capacity	201

Realignment

Grade Config	PK-8
Total Students:	315
PK	20
K-5	224
6-8	71
9-12	0

Capacity	516
Excess Capacity	201

MURRAY ES [PK-8]

Phase 2: 2012-2016

Configuration Action: No Change

Condition Action: Moderate Reno

Estimated Project Cost: \$12.3m

Remains a PK-8 School.

South

PHILLIPS K-5

Grade Config: **K-5**

Enrollment (2008-09)

Total Students: **293**

PK **0**

K-5 **293**

6-8 **0**

9-12 **0**

Capacity (2008-09)

Capacity **271**

Excess Capacity **-22**

Facility Baseline Data

Year Built: **1958** Acres: **1.0**

Gross SF: **27,736** Demountables: **0**

Condition Assessment

Facility Condition Index (FCI): **40**

Condition Level: **Moderate Reno**

Recommendation:

Projected

Enrollment (2018-19)

Total Students: **249**

PK **0**

K-5 **249**

6-8 **0**

9-12 **0**

Capacity (2018-19)

Capacity **271**

Excess Capacity **22**

Realignment

Grade Config **K-5**

Total Students: **249**

PK **0**

K-5 **249**

6-8 **0**

9-12 **0**

Capacity **271**

Excess Capacity **22**

PHILLIPS ES [K-5]

Phase 3: 2014-2018

Configuration Action: No Change

Condition Action: Moderate Reno

Estimated Project Cost: \$4.4m

Remains a K-5 School.

South

ROOSEVELT (PK / K-1)

Grade Config: PK-1

Enrollment (2008-09)

Total Students:	164
PK	17
K-5	147
6-8	0
9-12	0

Capacity (2008-09)

Capacity	158
Excess Capacity	-6

Facility Baseline Data

Year Built:	1959	Acres:	0.8
Gross SF:	13,946	Demountables:	0

Condition Assessment

Facility Condition Index (FCI):	59
Condition Level:	Moderate Reno

Recommendation:

Projected

Enrollment (2018-19)

Total Students:	149
PK	20
K-5	129
6-8	0
9-12	0

Capacity (2018-19)

Capacity	158
Excess Capacity	9

Realignment

Grade Config	na
Total Students:	0
PK	0
K-5	0
6-8	0
9-12	0

Capacity	0
Excess Capacity	0

ROOSEVELT [Discontinue]

Phase 1: 2010-2014

Configuration Action: Discontinue

Condition Action: No Renovation Work

Cost Avoidance \$2.2m

Roosevelt PK/K-1 to be discontinued. Boundary to be adjusted between Roosevelt 2-5 and Concord in Phase I.

South

ROOSEVELT 2-5

Grade Config: 2-5

Enrollment (2008-09)

Total Students: 298

PK 0

K-5 298

6-8 0

9-12 0

Capacity (2008-09)

Capacity 328

Excess Capacity 30

Facility Baseline Data

Year Built: 1960 Acres: 0.6

Gross SF: 35,335 Demountables: 0

Condition Assessment

Facility Condition Index (FCI): 14

Condition Level: General Maint

Recommendation:

ROOSEVELT ES [PK-5]

Phase 4: 2016-2020

Configuration Action: Adjust Boundaries

Condition Action: General Maint

Estimated Project Cost: \$.0m

Roosevelt PK/K-1 to be discontinued. Boundary to be adjusted between Roosevelt 2-5 and Concord in Phase I.

Projected

Enrollment (2018-19)

Total Students: 229

PK 0

K-5 229

6-8 0

9-12 0

Capacity (2018-19)

Capacity 328

Excess Capacity 99

Realignment

Grade Config PK-5

Total Students: 312

PK 20

K-5 292

6-8 0

9-12 0

Capacity 328

Excess Capacity 16

South

SOUTH BROOK 6-8

Grade Config: 6-8

Enrollment (2008-09)

Total Students:	422
PK	0
K-5	0
6-8	422
9-12	0

Capacity (2008-09)

Capacity	323
Excess Capacity	-99

Facility Baseline Data

Year Built:	2001	Acres:	12.4
Gross SF:	53,035	Demountables:	0

Condition Assessment

Facility Condition Index (FCI):	1
Condition Level:	General Maint

Recommendation:

Projected

Enrollment (2018-19)

Total Students:	267
PK	0
K-5	0
6-8	267
9-12	0

Capacity (2018-19)

Capacity	323
Excess Capacity	56

Realignment

Grade Config	6-8
Total Students:	267
PK	0
K-5	0
6-8	267
9-12	0

Capacity	323
Excess Capacity	56

SOUTH BROOK MS [6-8]

Phase 4: 2016-2020

Configuration Action: No Change
Condition Action: General Maint
Estimated Project Cost: \$.0m

Remains a 6-8 School.

South

SOUTH HILLS 6-8

Grade Config: 6-8

Enrollment (2008-09)

Total Students:	455
PK	0
K-5	0
6-8	455
9-12	0

Capacity (2008-09)

Capacity	665
Excess Capacity	210

Facility Baseline Data

Year Built:	1976	Acres:	34.6
Gross SF:	94,213	Demountables:	0

Condition Assessment

Facility Condition Index (FCI):	41
Condition Level:	Moderate Reno

Recommendation:

Projected

Enrollment (2018-19)

Total Students:	330
PK	0
K-5	0
6-8	330
9-12	0

Capacity (2018-19)

Capacity	665
Excess Capacity	335

Realignment

Grade Config	6-8
Total Students:	330
PK	0
K-5	0
6-8	330
9-12	0

Capacity	665
Excess Capacity	335

SOUTH HILLS MS [6-8]

Phase 3: 2014-2018

Configuration Action: No Change

Condition Action: Moderate Reno

Estimated Project Cost: \$15.6m

Remains a 6-8 School.

South

WEST LIBERTY K-5

Grade Config: K-5

Enrollment (2008-09)

Total Students:	294
PK	0
K-5	294
6-8	0
9-12	0

Capacity (2008-09)

Capacity	271
Excess Capacity	-23

Facility Baseline Data

Year Built:	1938	Acres:	12.4
Gross SF:	36,090	Demountables:	0

Condition Assessment

Facility Condition Index (FCI):	34
Condition Level:	Moderate Reno

Recommendation:

Projected

Enrollment (2018-19)

Total Students:	226
PK	0
K-5	226
6-8	0
9-12	0

Capacity (2018-19)

Capacity	271
Excess Capacity	45

Realignment

Grade Config	K-5
Total Students:	226
PK	0
K-5	226
6-8	0
9-12	0

Capacity	271
Excess Capacity	45

WEST LIBERTY ES [K-5]

Phase 3: 2014-2018

Configuration Action: No Change

Condition Action: Moderate Reno

Estimated Project Cost: \$5.7m

Remains a K-5.

South

WHITTIER K-5

Grade Config: **K-5**

Enrollment (2008-09)

Total Students: **248**

PK	0
K-5	248
6-8	0
9-12	0

Capacity (2008-09)

Capacity	289
Excess Capacity	41

Facility Baseline Data

Year Built:	1938	Acres:	3.5
Gross SF:	45,346	Demountables:	0

Condition Assessment

Facility Condition Index (FCI):	45
Condition Level:	Moderate Reno

Recommendation:

Projected

Enrollment (2018-19)

Total Students:	215
PK	0
K-5	215
6-8	0
9-12	0

Capacity (2018-19)

Capacity	289
Excess Capacity	74

Realignment

Grade Config	K-5
Total Students:	215
PK	0
K-5	215
6-8	0
9-12	0

Capacity	289
Excess Capacity	74

WHITTIER ES [K-5]

Phase 3: 2014-2018

Configuration Action: No Change

Condition Action: Moderate Reno

Estimated Project Cost: \$7.1m

Remains a K-5 School.

SOUTH Boundary Adjustments

Beechwood

Beechwood, Banksville

Carmalt

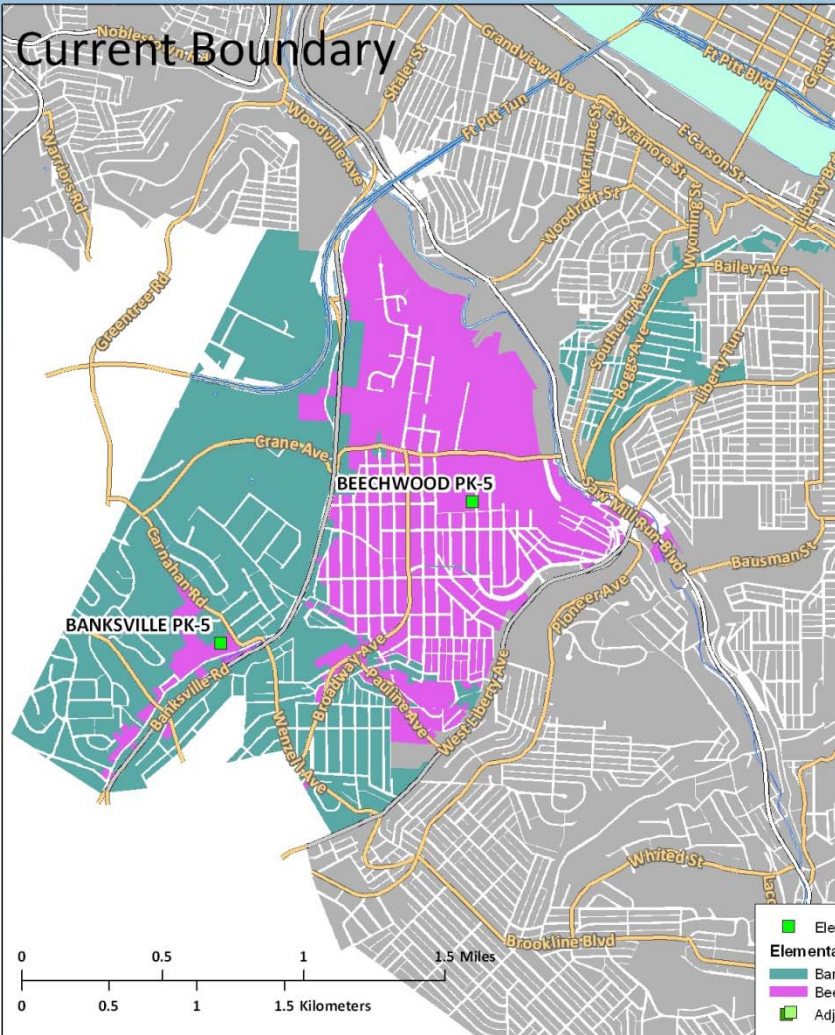
Carmalt, Brookline

Roosevelt

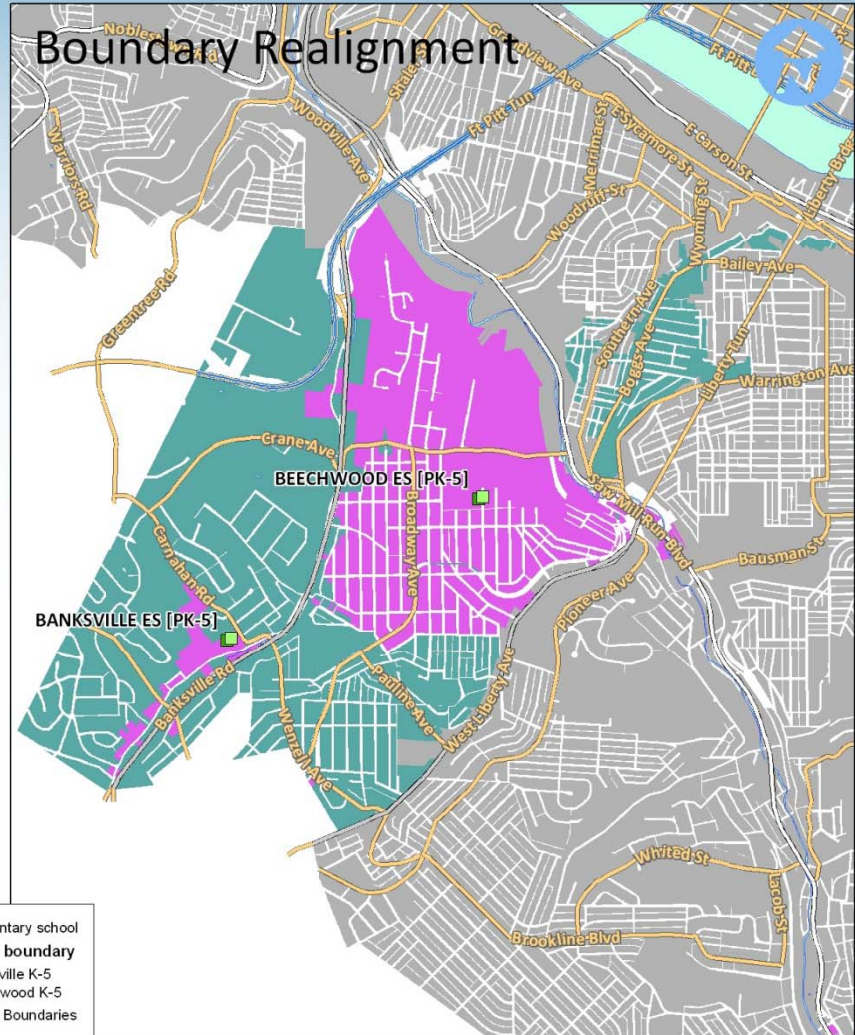
Roosevelt, Concord

Beechwood/Banksville Boundary Realignment

Current Boundary

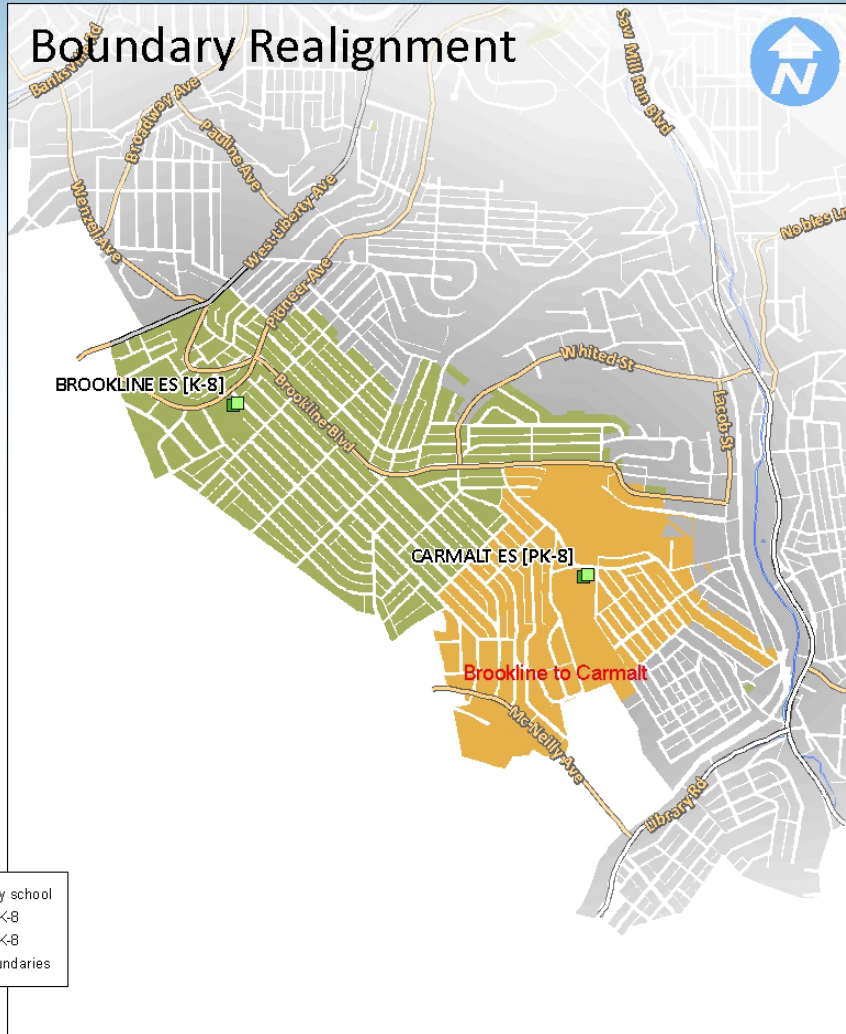
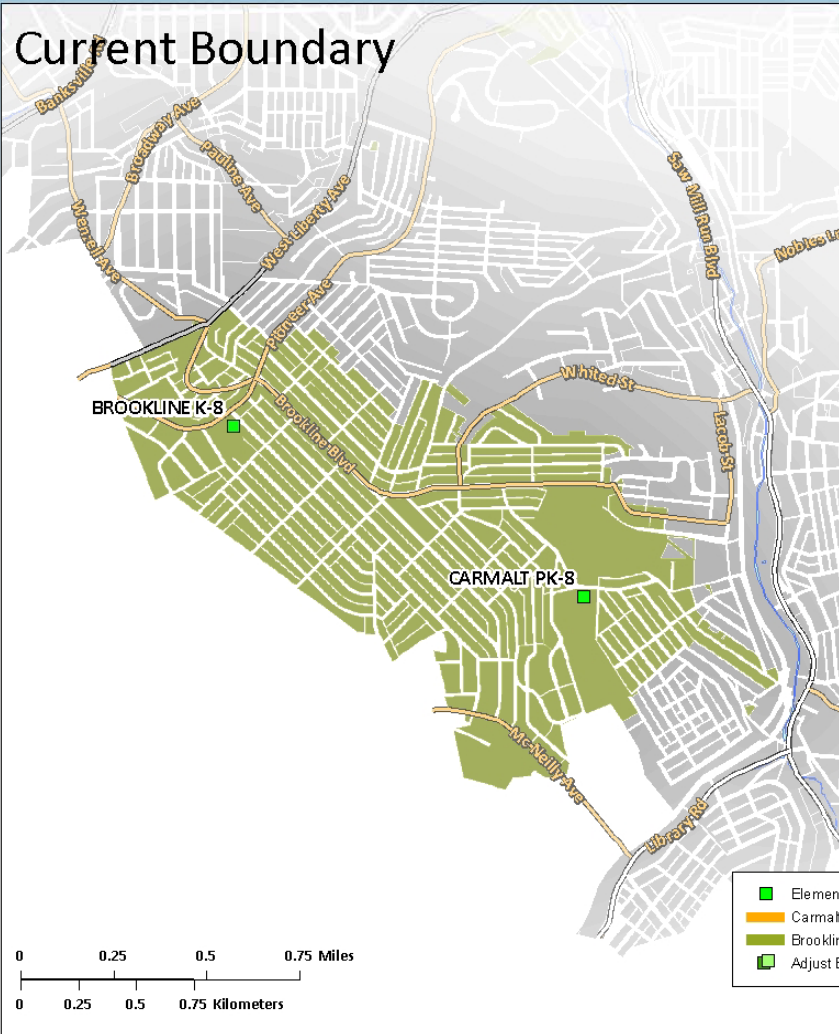


Boundary Realignment



Beechwood Boundary Realignment

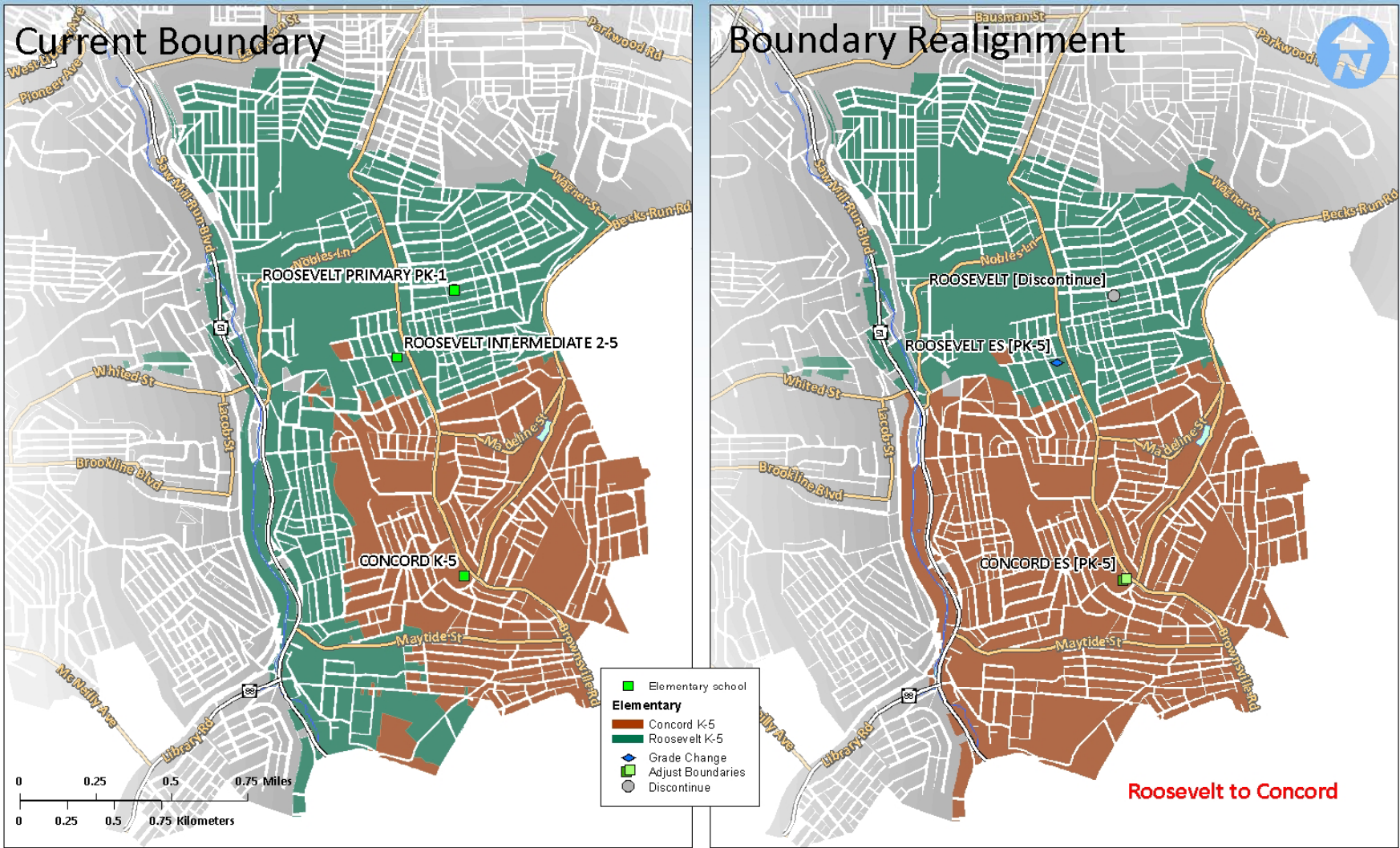
Carmalt Boundary Realignment



- Elementary school
- Carmalt PK-8
- Brookline K-8
- Adjust Boundaries

Carmalt Boundary Realignment

Roosevelt Boundary Realignment



Roosevelt Boundary Realignment

High Schools

School by School Recommendations

12 Schools

High School

ALLDERDICE HIGH SCHOOL

Grade Config: 9-12

Enrollment (2008-09)

Total Students:	1420
PK	0
K-5	0
6-8	0
9-12	1420

Capacity (2008-09)

Capacity	1902
Excess Capacity	482

Facility Baseline Data

Year Built:	1927	Acres:	7.7
Gross SF:	292,341	Demountables:	0

Condition Assessment

Facility Condition Index (FCI):	59
Condition Level:	Moderate Reno

Recommendation:

Projected Enrollment (2018-19)

Total Students:	1045
PK	0
K-5	0
6-8	0
9-12	1045

Capacity (2018-19)

Capacity	1902
Excess Capacity	857

Realignment

Grade Config	9-12
Total Students:	1045
PK	0
K-5	0
6-8	0
9-12	1045

Capacity	1902
Excess Capacity	857

ALLDERDICE HS [9-12]

Phase 2: 2012-2016

Configuration Action: No Change

Condition Action: Moderate Reno

Estimated Project Cost: \$50.8m

Remains a 9-12 School.

High School

BRASHEAR HIGH SCHOOL

Grade Config: 9-12

Enrollment (2008-09)

Total Students:	1135
PK	0
K-5	0
6-8	0
9-12	1135

Capacity (2008-09)

Capacity	1518
Excess Capacity	383

Facility Baseline Data

Year Built:	1976	Acres:	34.6
Gross SF:	308,844	Demountables:	0

Condition Assessment

Facility Condition Index (FCI):	41
Condition Level:	Moderate Reno

Recommendation:

Projected

Enrollment (2018-19)

Total Students:	768
PK	0
K-5	0
6-8	0
9-12	768

Capacity (2018-19)

Capacity	1518
Excess Capacity	750

Realignment

Grade Config	9-12
Total Students:	768
PK	0
K-5	0
6-8	0
9-12	768

Capacity	1518
Excess Capacity	750

BRASHEAR HS [9-12]

Phase 3: 2014-2018

Configuration Action: No Change

Condition Action: Moderate Reno

Estimated Project Cost: \$53.6m

Remains a 9-12 School.

High School

CAPA HIGH SCHOOL

Grade Config: 6-12

Enrollment (2008-09)

Total Students:	554
PK	0
K-5	0
6-8	0
9-12	554

Capacity (2008-09)

Capacity	1014
Excess Capacity	460

Facility Baseline Data

Year Built:	2003	Acres:	0.8
Gross SF:	195,997	Demountables:	0

Condition Assessment

Facility Condition Index (FCI):	2
Condition Level:	Gen Maint

Recommendation:

Projected

Enrollment (2018-19)

Total Students:	830
PK	0
K-5	0
6-8	300
9-12	530

Capacity (2018-19)

Capacity	1014
Excess Capacity	184

Realignment

Grade Config	6-12
Total Students:	830
PK	0
K-5	0
6-8	300
9-12	530

Capacity	1014
Excess Capacity	184

CAPA HS [6-12]

Phase 4: 2016-2020

Configuration Action: No Change

Condition Action: General Maint

Estimated Project Cost: \$.0m

Remains a 6-12 School.

High School

CARRICK HIGH SCHOOL

Grade Config: 9-12

Enrollment (2008-09)

Total Students:	937
PK	0
K-5	0
6-8	0
9-12	937

Capacity (2008-09)

Capacity	1059
Excess Capacity	122

Facility Baseline Data

Year Built:	1924	Acres:	5.3
Gross SF:	231,324	Demountables:	0

Condition Assessment

Facility Condition Index (FCI):	15
Condition Level:	Gen Maint

Recommendation:

Projected Enrollment (2018-19)

Total Students:	602
PK	0
K-5	0
6-8	0
9-12	602

Capacity (2018-19)

Capacity	1059
Excess Capacity	457

Realignment

Grade Config	9-12
Total Students:	602
PK	0
K-5	0
6-8	0
9-12	602

Capacity	1059
Excess Capacity	457

CARRICK HS [9-12]

Phase 4: 2016-2020

Configuration Action: No Change

Condition Action: General Maint

Estimated Project Cost: \$.0m

Remains a 9-12 School.

High School

FRICK 6-9

Grade Config: 6-9

Enrollment (2008-09)

Total Students: 562

PK 0

K-5 0

6-8 427

9-12 135

Capacity (2008-09)

Capacity 700

Excess Capacity 138

Facility Baseline Data

Year Built: 1927 Acres: 2.6

Gross SF: 128,840 Demountables: 0

Condition Assessment

Facility Condition Index (FCI): 17

Condition Level: Minor Reno

Recommendation:

Projected

Enrollment (2018-19)

Total Students: 520

PK 0

K-5 0

6-8 150

9-12 370

Capacity (2018-19)

Capacity 700

Excess Capacity 180

Realignment

Grade Config 6-12

Total Students: 520

PK 0

K-5 0

6-8 150

9-12 370

Capacity 700

Excess Capacity 180

SCIENCE & TECH AT FRICK HS [6-12]

Phase 4: 2016-2020

Configuration Action: School/Facility Change

Condition Action: Minor Reno

Estimated Project Cost: \$10.7m

Board Approved: Frick facility will become new Science & Technology High School for grades 6-12 grade in Phase I.

High School

LANGLEY HIGH SCHOOL

Grade Config: **9-12**

Enrollment (2008-09)

Total Students:	498
PK	0
K-5	0
6-8	0
9-12	498

Capacity (2008-09)

Capacity	880
Excess Capacity	382

Facility Baseline Data

Year Built:	1923	Acres:	6.1
Gross SF:	261,589	Demountables:	0

Condition Assessment

Facility Condition Index (FCI):	51
Condition Level:	Moderate Reno

Recommendation:

Realignment

Grade Config	9-12
Total Students:	516
PK	0
K-5	0
6-8	0
9-12	516

Capacity	880
Excess Capacity	364

Projected

Enrollment (2018-19)

Total Students:	227
PK	0
K-5	0
6-8	0
9-12	227

Capacity (2018-19)

Capacity	880
Excess Capacity	653

LANGLEY HS [9-12]

Phase 2: 2012-2016

Configuration Action: Adjust Boundaries

Condition Action: Moderate Reno

Estimated Project Cost: \$45.5m

Enrollment to increase with addition of Oliver students.

High School

OLIVER HIGH SCHOOL

Grade Config: **9-12**

Enrollment (2008-09)

Total Students:	603
PK	0
K-5	0
6-8	0
9-12	603

Capacity (2008-09)

Capacity	1260
Excess Capacity	657

Facility Baseline Data

Year Built:	1924	Acres:	14.3
Gross SF:	282,186	Demountables:	0

Condition Assessment

Facility Condition Index (FCI):	63
Condition Level:	Major Reno

Recommendation:

Projected Enrollment (2018-19)

Total Students:	289
PK	0
K-5	0
6-8	0
9-12	289

Capacity (2018-19)

Capacity	1260
Excess Capacity	971

Realignment

Grade Config	K-5
Total Students:	371
PK	0
K-5	5
6-8	121
9-12	245

Capacity	0
Excess Capacity	0

OLIVER [McNaugher/SAC-School/Facility Change]

Phase 1: 2010-2014

Configuration Action: School/Facility Change

Condition Action: Partial Reno

Estimated Project Cost: \$6.3m

Cost Avoidance: \$67.0m

Students to be assigned to Langley or choose magnet school option.

Convert building to house McNaugher, Student Achievement Center and the Overbrook staff.

High School

PEABODY HIGH SCHOOL

Grade Config: 9-12

Enrollment (2008-09)

Total Students:	497
PK	0
K-5	0
6-8	0
9-12	497

Capacity (2008-09)

Capacity	1221
Excess Capacity	724

Facility Baseline Data

Year Built:	1903	Acres:	5.8
Gross SF:	352,619	Demountables:	0

Condition Assessment

Facility Condition Index (FCI):	46
Condition Level:	Moderate Reno

Recommendation:

Projected Enrollment (2018-19)

Total Students:	259
PK	0
K-5	0
6-8	0
9-12	259

Capacity (2018-19)

Capacity	1221
Excess Capacity	962

Realignment

Grade Config	na
Total Students:	0
PK	0
K-5	0
6-8	0
9-12	0

Capacity	0
Excess Capacity	0

PEABODY [Discontinue]

Phase 1: 2010-2014

Configuration Action: Discontinue

Condition Action: No Renovation Work

Cost Avoidance \$61.3m

Students to be assigned to Westinghouse or choose magnet school options.

High School

PERRY HIGH SCHOOL

Grade Config: 9-12

Enrollment (2008-09)

Total Students:	755
PK	0
K-5	0
6-8	0
9-12	755

Capacity (2008-09)

Capacity	778
Excess Capacity	23

Facility Baseline Data

Year Built:	1901	Acres:	5.9
Gross SF:	222,822	Demountables:	0

Condition Assessment

Facility Condition Index (FCI):	64
Condition Level:	Major Reno

Recommendation:

Projected Enrollment (2018-19)

Total Students:	638
PK	0
K-5	0
6-8	0
9-12	638

Capacity (2018-19)

Capacity	778
Excess Capacity	140

Realignment

Grade Config	9-12
Total Students:	638
PK	0
K-5	0
6-8	0
9-12	638

Capacity	778
Excess Capacity	140

PERRY HS [9-12]

Phase 1: 2010-2014

Configuration Action: No Change

Condition Action: Major Reno

Estimated Project Cost: \$58.1m

Remains a 9-12 School.

High School

SCHENLEY AT REIZENSTEIN HIGH SCHOOL

Grade Config: 9-12

Enrollment (2008-09)

Total Students:	694
PK	0
K-5	0
6-8	0
9-12	694

Capacity (2008-09)

Capacity	1397
Excess Capacity	703

Facility Baseline Data

Year Built:	1975	Acres:	12.9
Gross SF:	232,735	Demountables:	0

Condition Assessment

Facility Condition Index (FCI):	55
Condition Level:	Moderate Reno

Recommendation:

Projected Enrollment (2018-19)

Total Students:	950
PK	0
K-5	0
6-8	420
9-12	530

Capacity (2018-19)

Capacity	1397
Excess Capacity	447

Realignment

Grade Config	6-12
Total Students:	950
PK	0
K-5	0
6-8	420
9-12	530

Capacity	1397
Excess Capacity	447

IB AT REIZENSTEIN

Phase 1: 2010-2014

Configuration Action: No Change

Condition Action: Moderate Reno

Estimated Project Cost: \$40.4m

Building to used for IB program. ECC to remain in building.

High School

UNIVERSITY PREP HIGH SCHOOL

Grade Config: 9

Enrollment (2008-09)

Total Students:	135
PK	0
K-5	0
6-8	0
9-12	135

Capacity (2008-09)

Capacity	748
Excess Capacity	613

Facility Baseline Data

Year Built:	1928	Acres:	4.8
Gross SF:	146,752	Demountables:	0

Condition Assessment

Facility Condition Index (FCI):	24
Condition Level:	Minor Reno

Recommendation:

Projected

Enrollment (2018-19)

Total Students:	590
PK	0
K-5	0
6-8	180
9-12	410

Capacity (2018-19)

Capacity	748
Excess Capacity	158

Realignment

Grade Config	6-12
Total Students:	590
PK	0
K-5	0
6-8	180
9-12	410

Capacity	748
Excess Capacity	158

UNIVERSITY PREP HS [6-12]

Phase 4: 2016-2020

Configuration Action: Grade Change

Condition Action: Minor Reno

Estimated Project Cost: \$12.7m

Board Approved: 2009-10 grades 6-10 and will expand to become school for grades 6-12.

High School

WESTINGHOUSE HIGH SCHOOL

Grade Config: 9-12

Enrollment (2008-09)

Total Students:	335
PK	0
K-5	0
6-8	0
9-12	335

Capacity (2008-09)

Capacity	977
Excess Capacity	642

Facility Baseline Data

Year Built:	1922	Acres:	8.4
Gross SF:	307,552	Demountables:	0

Condition Assessment

Facility Condition Index (FCI):	21
Condition Level:	Minor Reno

Recommendation:

Projected Enrollment (2018-19)

Total Students:	137
PK	0
K-5	0
6-8	0
9-12	137

Capacity (2018-19)

Capacity	977
Excess Capacity	840

Realignment

Grade Config	6-12
Total Students:	661
PK	0
K-5	0
6-8	265
9-12	396

Capacity	977
Excess Capacity	316

WESTINGHOUSE HS [6-12]

Phase 4: 2016-2020

Configuration Action: Grade Change

Condition Action: Minor Reno

Estimated Project Cost: \$26.7m

To become a 6-12 school. Enrollment to increase with addition of students from Lincoln Intermediate (6-8), Faison Intermediate (6-8), and Peabody (9-12).

Special Schools

School by School Recommendations

5 Schools

Special

CLAYTON

Grade Config: **6-12**

Enrollment (2008-09)

Total Students:	203
PK	0
K-5	0
6-8	81
9-12	122

Capacity (2008-09)

Capacity	432
Excess Capacity	229

Facility Baseline Data

Year Built:	1956	Acres:	3.5
Gross SF:	53,459	Demountables:	0

Condition Assessment

Facility Condition Index (FCI):	22
Condition Level:	Minor Reno

Recommendation:

Projected Enrollment (2018-19)

Total Students:	204
PK	0
K-5	0
6-8	26
9-12	178

Capacity (2018-19)

Capacity	432
Excess Capacity	228

Realignment

Grade Config	6-12
Total Students:	204
PK	0
K-5	0
6-8	26
9-12	178

Capacity	432
Excess Capacity	228

CLAYTON [Special]

Phase 4: 2016-2020

Configuration Action: No Change

Condition Action: Minor Reno

Estimated Project Cost: \$4.4m

Remains in use for its current program.

Special

CONROY

Grade Config: **K-12**

Enrollment (2008-09)

Total Students:	230
PK	62
K-5	34
6-8	30
9-12	104

Capacity (2008-09)

Capacity	252
Excess Capacity	22

Facility Baseline Data

Year Built:	1895	Acres:	1.2
Gross SF:	125,432	Demountables:	0

Condition Assessment

Facility Condition Index (FCI):	19
Condition Level:	Minor Reno

Recommendation:

Projected

Enrollment (2018-19)

Total Students:	187
PK	80
K-5	29
6-8	21
9-12	57

Capacity (2018-19)

Capacity	252
Excess Capacity	65

Realignment

Grade Config	5-21 yrs
Total Students:	187
PK	80
K-5	29
6-8	21
9-12	57

Capacity	252
Excess Capacity	65

CONROY [Special]

Phase 4: 2016-2020

Configuration Action: No Change

Condition Action: Minor Reno

Estimated Project Cost: \$10.4m

Remains in use for its current program.

Special

MCNAUGHER

Grade Config: **K-12**

Enrollment (2008-09)

Total Students:	97
PK	0
K-5	1
6-8	28
9-12	68

Capacity (2008-09)

Capacity	180
Excess Capacity	83

Facility Baseline Data

Year Built:	1908	Acres:	1.8
Gross SF:	58,909	Demountables:	0

Condition Assessment

Facility Condition Index (FCI):	67
Condition Level:	Major Reno

Recommendation:

Projected

Enrollment (2018-19)

Total Students:	80
PK	0
K-5	5
6-8	15
9-12	60

Capacity (2018-19)

Capacity	180
Excess Capacity	100

Realignment

Grade Config	na
Total Students:	0
PK	0
K-5	0
6-8	0
9-12	0

Capacity	0
Excess Capacity	0

MCNAUGHER [School/Facility Change]

Phase 1: 2010-2014

Configuration Action: School/Facility Change

Condition Action: Major Reno

Cost Avoidance: 14.6m

Move Program to Oliver.

Special

PIONEER

Grade Config: **K-12**

Enrollment (2008-09)

Total Students:	69
PK	0
K-5	27
6-8	10
9-12	32

Capacity (2008-09)

Capacity	144
Excess Capacity	75

Facility Baseline Data

Year Built:	1960	Acres:	12.4
Gross SF:	29,136	Demountables:	0

Condition Assessment

Facility Condition Index (FCI):	26
Condition Level:	Minor Reno

Recommendation:

Projected

Enrollment (2018-19)

Total Students:	76
PK	0
K-5	30
6-8	15
9-12	31

Capacity (2018-19)

Capacity	144
Excess Capacity	68

Realignment

Grade Config	5-21 yrs
Total Students:	76
PK	0
K-5	30
6-8	15
9-12	31

Capacity	144
Excess Capacity	68

PIONEER [Special]

Phase 4: 2016-2020

Configuration Action: No Change

Condition Action: Minor Reno

Estimated Project Cost: \$2.4m

Remains in use for its current program.

Special

STUDENT ACHIEVEMENT CENTER 6-8/9-12

Grade Config: **6-12**

Enrollment (2008-09)

Total Students:	263
PK	0
K-5	1
6-8	48
9-12	214

Capacity (2008-09)

Capacity	472
Excess Capacity	209

Facility Baseline Data

Year Built:	1908	Acres:	1.8
Gross SF:	86,539	Demountables:	0

Condition Assessment

Facility Condition Index (FCI):	62
Condition Level:	Major Reno

Recommendation:

Projected

Enrollment (2018-19)

Total Students:	215
PK	0
K-5	0
6-8	30
9-12	185

Capacity (2018-19)

Capacity	472
Excess Capacity	257

Realignment

Grade Config	na
Total Students:	0
PK	0
K-5	0
6-8	0
9-12	0

Capacity	0
Excess Capacity	0

STUDENT ACHIEVEMENT CENTER [School/Facility Change]

Phase 1: 2010-2014
Configuration Action: School/Facility Change
Condition Action: Major Reno
Cost Avoidance \$21.5m
Move program to Oliver.