



The Right-Sizing Plan for 2006-07 School Year

Presented to the Board on February 28, 2006

School Reorganization Vision

MOVE FROM:

A system of small schools with significant variation in educational quality, equity and cost effectiveness



A system of quality schools that promote high student achievement in the most equitable and cost-effective manner

Criteria for Right-Sizing Decisions

PART ONE

1. Keep high-performing schools open if they can operate with a fair share of resources
2. Move students to higher-performing school or school with an enhanced educational program
3. Promote socio-economic, racial, educational program and facilities equity
4. Look at facilities that have space and conditions to support the moves
5. Convert excess capacity resources to funds available for enhanced educational programs

Criteria for Right-Sizing Decisions

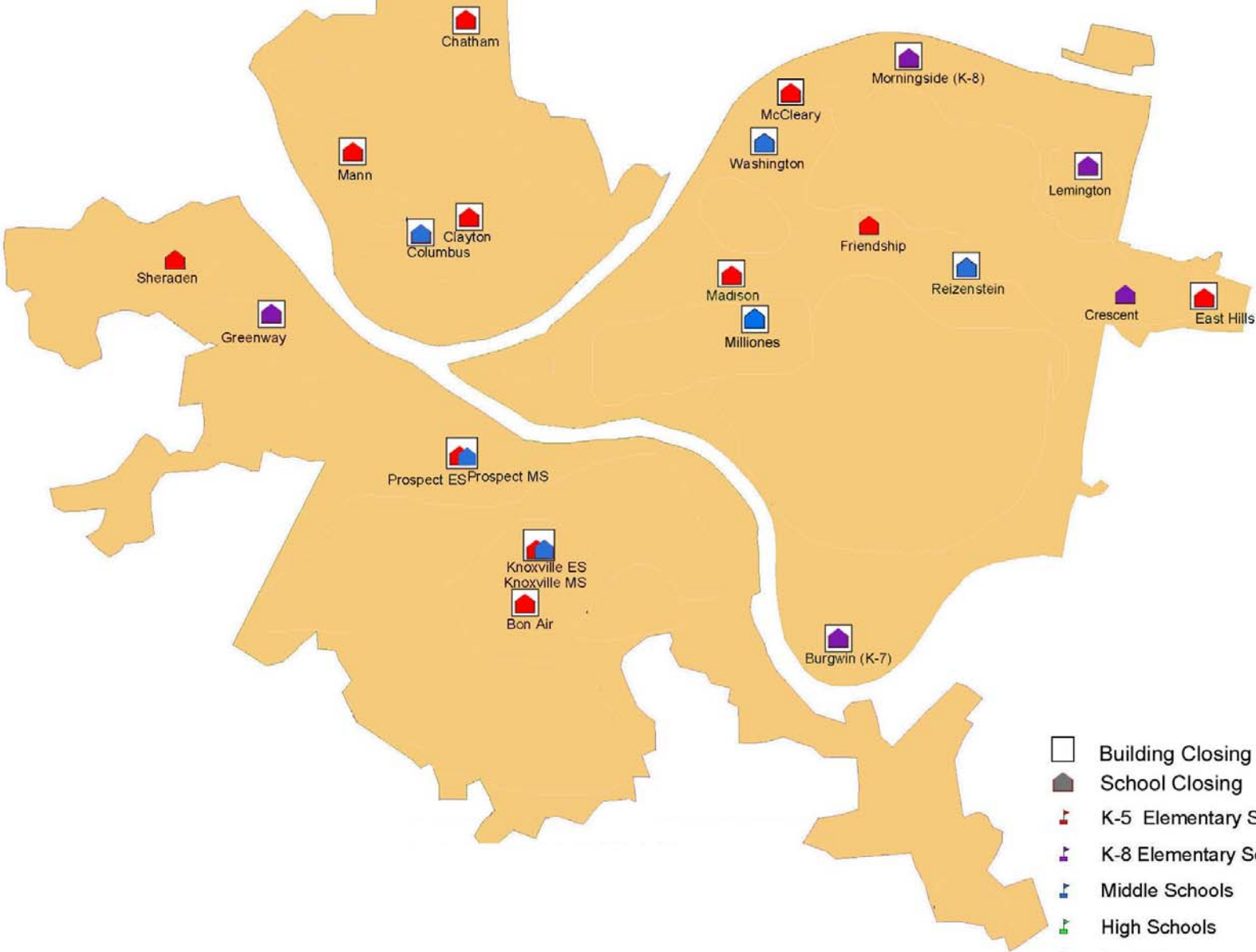
PART TWO

6. Preserve the diversity across the District
7. Consider number of students moving
8. Assess impact and opportunity on attracting and holding students
9. Reduce future capital investments
10. Consider the impact of transportation

22 Schools Will Close

- Bon Air
- Burgwin
- Chatham
- Clayton
- Columbus
- Crescent
- East Hills
- Friendship
- Greenway Middle
- Knoxville Elem.
- Knoxville Middle
- Lemington
- Madison
- Mann
- McCleary
- Milliones
- Morningside
- Prospect Elem.
- Prospect Middle
- Reizenstein
- Sheraden
- Washington Polytech

22 Schools Will Close



- Building Closing
- School Closing
- 🏠 K-5 Elementary Schools
- 🏠 K-8 Elementary Schools
- 🏠 Middle Schools
- 🏠 High Schools
- 🏠 Centers

3 Schools Move in 2006

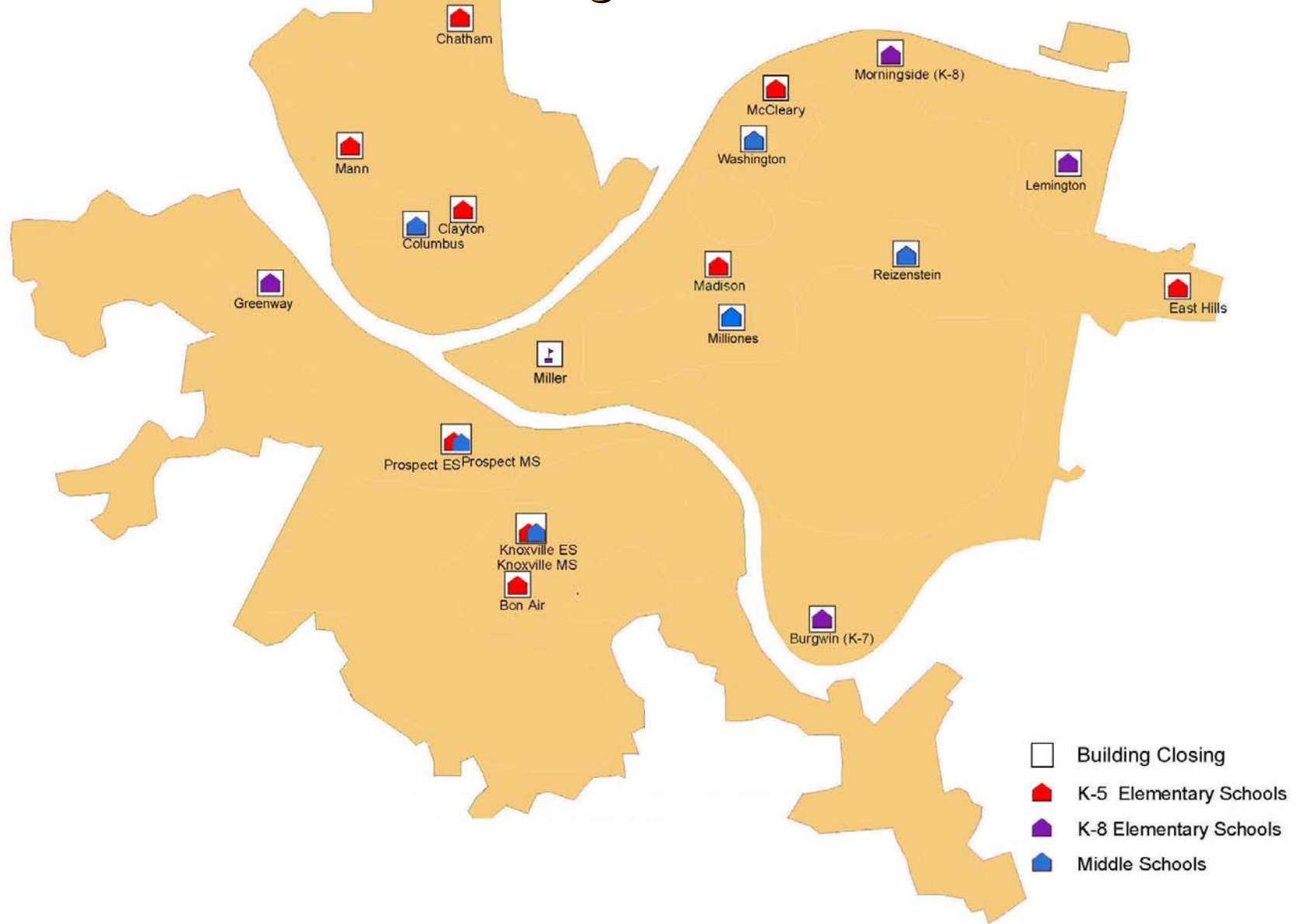
- Homewood Montessori
 - From Belmar to Friendship building
- Miller African-Centered Academy
 - From Miller to McKelvy building
- Pittsburgh Classical Academy
 - From Greenway to Langley building

Gifted program moves from McKelvy to Ridge Avenue building

Close 22 Schools	Close 18 Buildings	Add 1 New School
		Arsenal K-5
Bon Air K-5	Bon Air	
Burgwin K-7	Burgwin	
Chatham K-5	Chatham	
Clayton K-5	Clayton	
Columbus 6-8	Columbus	
Crescent K-5		
East Hills K-5	East Hills	
Friendship K-5		
Greenway 6-8	GREENWAY	
<i>Knoxville K-5</i>	<i>Knoxville</i>	
<i>Knoxville 6-8</i>		
Lemington K-5	LEMINGTON	
Madison K-5	Madison	
Mann K-5	Mann	
McCleary K-5	McCleary	
	Miller	
Milliones 6-8	MILLIONES	
Morningside K-8	Morningside	
<i>Prospect K-5</i>	<i>Prospect</i>	
<i>Prospect 6-8</i>		
Reizenstein 6-8	REIZENSTEIN	
Sheraden K-5		
Washington 6-8	WASHINGTON	

All CAPS denotes buildings proposed to close and subject to 3-month public Commentary from March 20 Special Public Hearing

18 Buildings Will Close



1 New Elementary School (Feb. 9 Plan)

- New K-5 in Arsenal building
 - Receives students from closing McCleary school and some students from reconfiguration of Woolslair feeder

Schools vs. School Buildings

Move From:

86 schools in 80 buildings



65 schools in 63 buildings

Eliminating Excess Capacity

Move From:

13,706 total empty seats



3,589 remaining empty seats

10.3% of total functional capacity

New Facility Configuration Supports K-8 Expansion

- K-8s show promise nationwide and in Pittsburgh
- Be innovative with to overcome facility hurdles
- Pair facilities to support one K-8 school
 - Maximizes resources of smaller facilities
 - Creates educational continuity cost-effectively

Three new facility pairs:

Faison K-8: K-4 at Faison; 5-8 at Crescent building

Lincoln K-8: K-4 at Lincoln; 5-8 at Belmar building

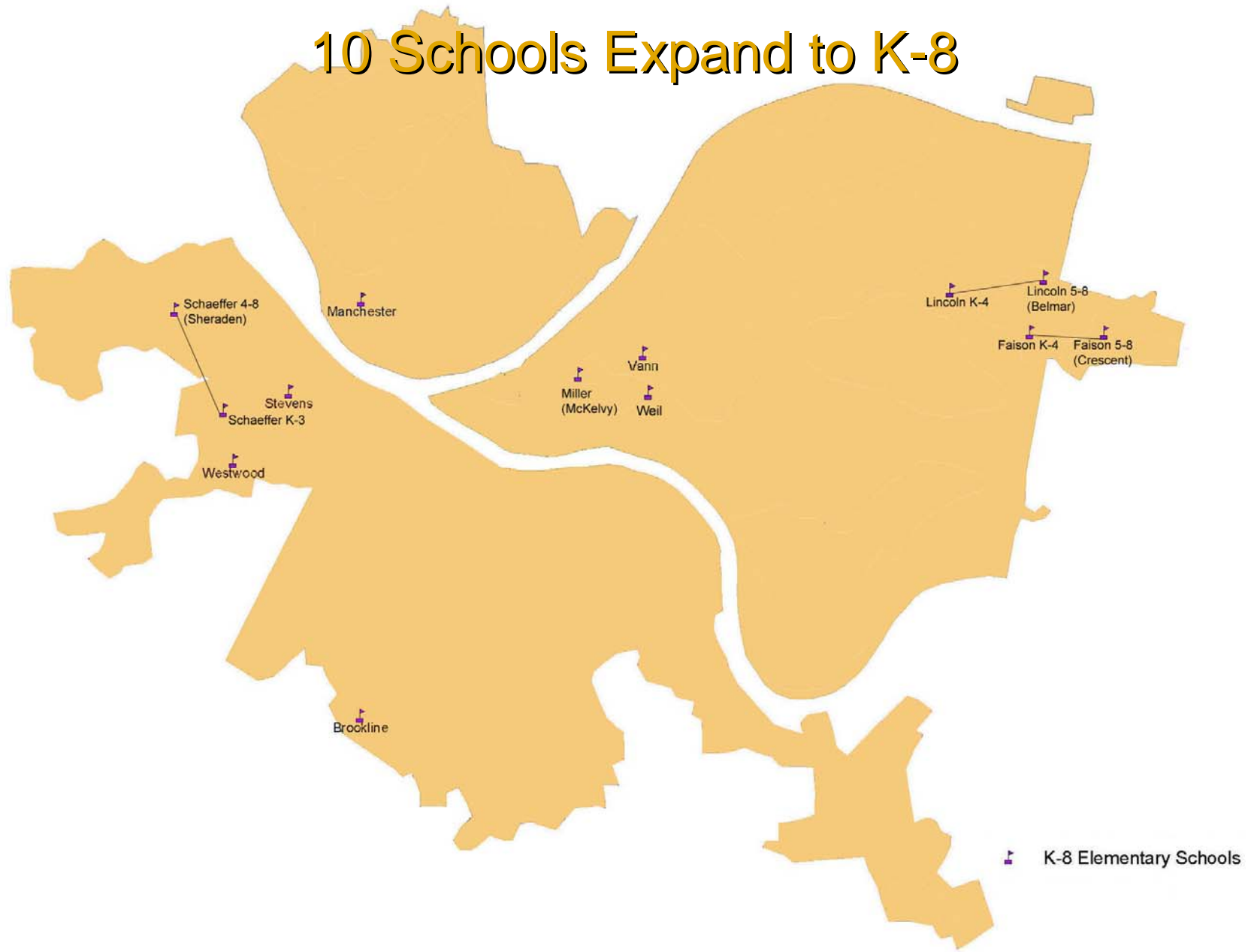
(Lemington students attend Lincoln K-8)

Schaeffer K-8: K-3 at Schaeffer; 4-8 at Sheraden bldg.

10 Schools Expand to K-8

- Brookline
- Faison
(intermediate campus @ Crescent building)
- Lincoln
(intermediate campus @ Belmar building)
- Manchester
- Miller (at McKelvy building)
- Schaeffer
(intermediate campus @ Sheraden building)
- Stevens
- Vann
- Weil
- Westwood

10 Schools Expand to K-8



K-8 Transition Team Considerations

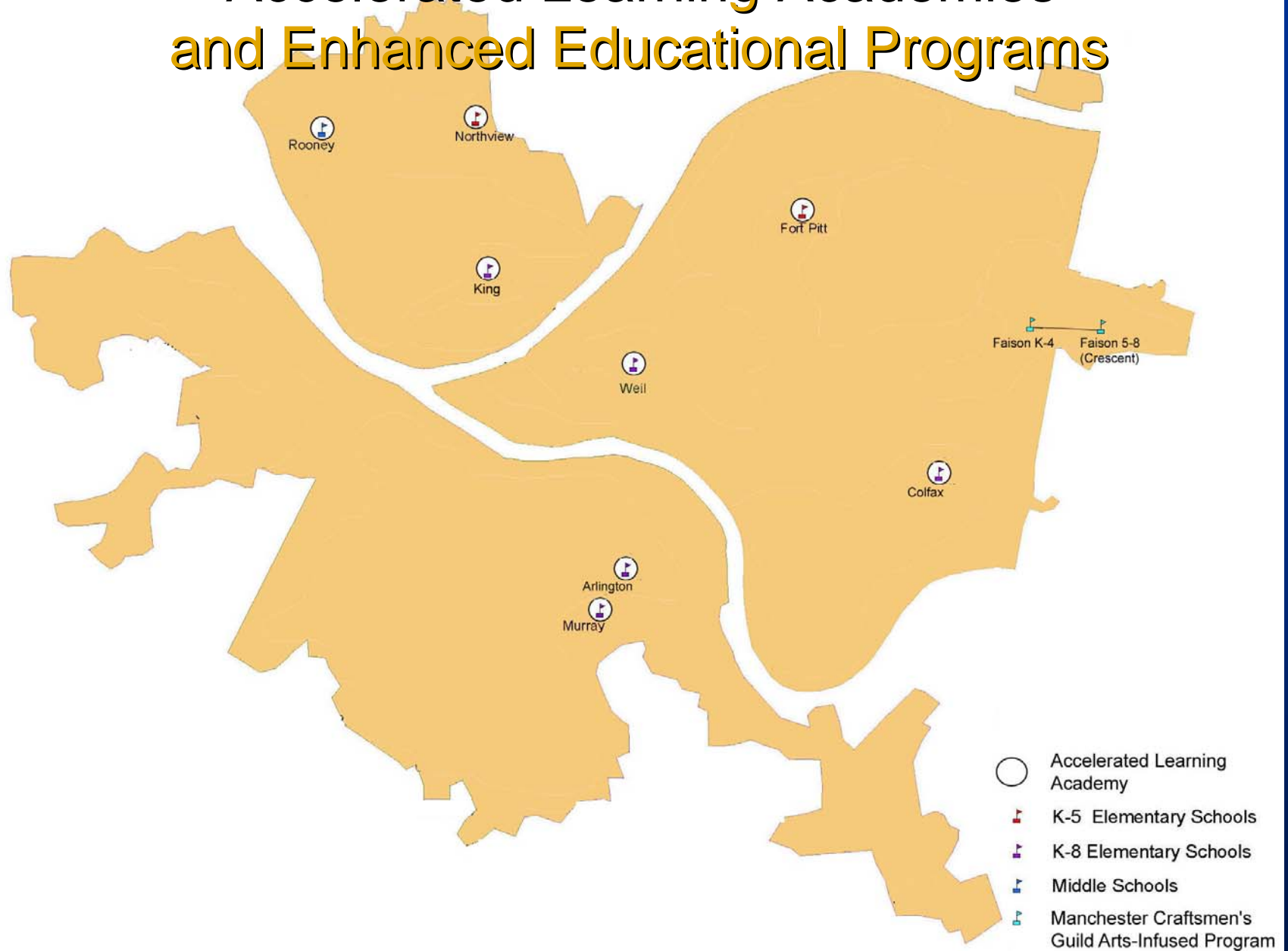
- Additional support staff
- Activities for parents, students and staff
- Optimal meal services
- Middle grade athletics
- Organization of facility to ensure appropriate learning environments
- Facility assessment (i.e. bathrooms, labs, water fountains)

8 Schools Become Accelerated Learning Academies

- Arlington K-8
- Colfax K-8
- Fort Pitt K-5
- King K-8
- Murray K-8
- Northview K-5
- Rooney 6-8
- Weil K-8

Faison K-8 will have an enhanced arts-infused program through partnership with Manchester Craftsmen's Guild

Accelerated Learning Academies and Enhanced Educational Programs



Closed Schools	Student Assignments – Final Plan Adopted Feb. 28, 2006
Bon Air K-5	Roosevelt K-5
Burgwin K-7	Minadeo K-5, Sterrett 6-8. Mifflin K-8
Chatham K-5	Northview K-5 <i>Accelerated Learning Academy</i>
Clayton K-5	King K-8 <i>Accelerated Learning Academy</i>
Columbus 6-8	Manchester <i>K-8</i> , King K-8 <i>Accelerated Learning Academy</i> and Rooney 6-8 <i>Accelerated Learning Academy</i>
Crescent K-5	Faison <i>K-8 Enhanced Program (K-4 at Faison & 5-8 at Crescent)</i>
East Hills K-5 Magnet	Students return to home feeder schools including Colfax K-8 <i>Accelerated Learning Academy</i> , option to continue French at Fulton K-5
Friendship K-5	Fort Pitt K-5 <i>Accelerated Learning Academy</i>
Greenway 6-8	Schaeffer <i>K-8</i> , Stevens <i>K-8</i> , Westwood <i>K-8</i>
Knoxville K-5	Arlington K-8 <i>Accelerated Learning Academy</i> , Murray K-8 <i>Accelerated Learning Academy</i> and Grandview K-5
Knoxville 6-8	Arlington K-8 <i>Accelerated Learning Academy</i> , Murray K-8 <i>Accelerated Learning Academy</i> and South Hills Middle
Lemington K-5	Lincoln <i>K-8 (K-4 at Lincoln & 5-8 at Belmar building)</i>
Madison K-5	Vann <i>K-8</i>
Mann K-5	King K-8 <i>Accelerated Learning Academy</i> and Morrow K-5
McCleary K-5	<i>New K-5 in Arsenal building</i>
Milliones 6-8	Vann <i>K-8</i> and Weil <i>K-8 Accelerated Learning Academy</i> and Miller <i>K-8</i>
Morningside K-8	Sunnyside K-8
Prospect K-5	Banksville K-5, Grandview K-5, and Whittier K-5
Prospect 6-8	South Hills Middle
Reizenstein 6-8	Faison <i>K-8 Enhanced Program</i> , Lincoln <i>K-8</i> and Sterrett 6-8
Sheraden K-5	Schaeffer <i>K-8 (K-3 at Schaeffer & 4-8 at Sheraden)</i>
Washington 6-8 Magnet	Students return to home feeder schools

Expand Early Childhood Education

- **Current Program (2005-06)**
 - Operating 71 full-day and 11 half-day classrooms serving 1,743 children
 - Supporting 55 childcare classrooms or 507 preschoolers through community partnerships
- **Expanded Program (2006-07)**
 - Convert 11 half-day programs to full day
 - An increase from 3 to 6 hours for 187 children
 - Operating 82 full-day programs, supporting 55 childcare classrooms through partnerships
 - Open 5 early childcare centers across city in addition to maintaining school-based locations
 - Allows for 66 new children to be served
 - Funded through additional Accountability Block Grant monies or Title I budget; no monies from General Fund except for building operations costs

5 Early Childhood Centers: 2006-07

- All will include:
 - Early Childhood Classrooms
 - Early Intervention Classrooms
 - Early Childhood community centers for partnership meetings and lending library
- Arlington (South)
 - Also includes 3 kindergarten and 3 first grade classes
- Chartiers (West)
- Homewood (East)
- McCleary (East/Central)
- Spring Garden (North)

5 Building Additions

- **Colfax K-8**
 - Equity for gym and cafeteria, 9 more classrooms for increasing enrollment, estimated completion for 2007-08
- **Concord K-5**
 - Equity for gym, 6 more classrooms for increasing enrollment, estimated completion for 2009-10
- **McKelvy (Houses Miller K-8)**
 - Equity for gym, estimated completion for 2008-09
- **Sterrett 6-8 Magnet**
 - Addition for equity purposes – gym, cafeteria and science labs, estimated completion for 2008-09
- **Vann K-8**
 - Equity for gym, estimated completion for 2008-09

Select Other Changes

- **Brookline K-8 School**
 - Brookline feeder students from South Hills return to Brookline; option for 8th graders to finish at South Hills Middle
- **Concord School**
 - Once addition is completed in 2009-10, the feeder pattern will be realigned with Roosevelt
- **Faison K-8 School**
 - Enhanced educational program through Greater Arts INtegration (GAIN) initiative and partnership with Manchester Craftmen's Guild;
 - Funded via U.S. Department of Education's Arts in Education Model Development and Dissemination Grants Program
- **Minadeo School**
 - Receives some Burgwin students; middle school feeder is to Sterrett
- **Ridge Avenue Building**
 - Houses gifted program students
- **Westinghouse School Building**
 - Receives administrative office personnel from Boggs

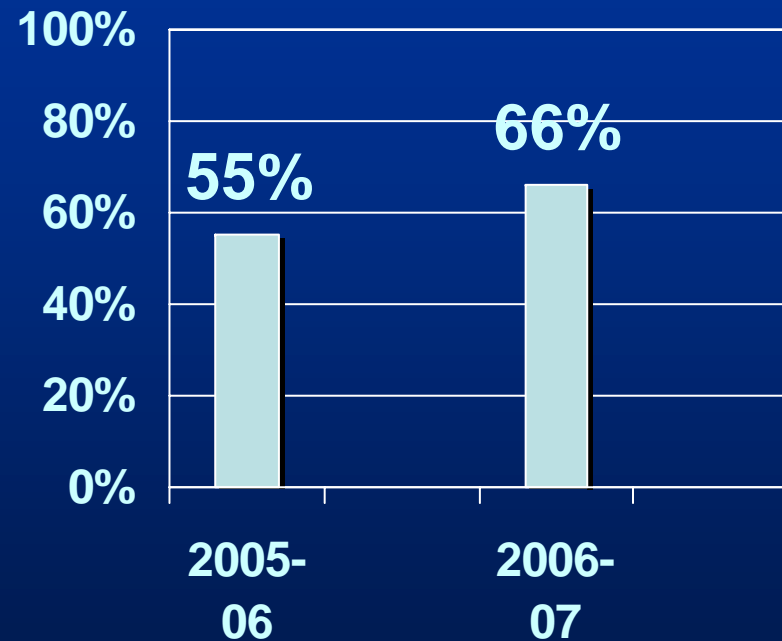
Call Parent Hotline or Visit District Website for Updated Feeder Patterns

Diversity Enhanced Districtwide

- Most students will be in racially mixed schools
- Racially Diverse Schools serve populations that are 25% to 75% African-American

* Does not include Pioneer, McNaugher, Conroy, Mercy BH, Middle Alternative and Student Achievement Center

% of Schools that are Racially Diverse*



Annual Operating Savings

\$14.7 Million
- \$ 4.4 Million

Net Annual Operating Savings
District's Annual Investment in
Accelerated Learning Academies

\$10.3 Million Net District Savings

*Funding Accelerated Learning Academies,
requires District to seek additional annual
funding as follows:*

Outside partners \$1.8 million

Federal & state \$2.2 million

Summary of Capital Improvements

- Eliminated: \$ 19.0 million
- Created: \$ 52.0 million
- Net Cost: \$ 33.0 million

- Net Cost for Annual Debt Service: \$ 3.0 million

Projected Staff Reductions

252

Includes Administrators, Teachers,
Paraprofessionals, Clerical and
Custodial

Next Steps

- **Implementation of Right-Sizing Plan**
 - Transition Team proceeds with activities that engages all key stakeholders
- **Community Feedback**
 - Emails to superintendentoffice@pghboe.net
 - www.pps.k12.pa.us
 - Parent hotline: 412-622-7920
- **March 20 Special Public Hearing**
 - Comments only on new recommendation to close 5 buildings: Greenway, Lemington, Milliones, Reizenstein, Washington



The Right-Sizing Plan for 2006-07 School Year

Presented to the Board on February 28, 2006