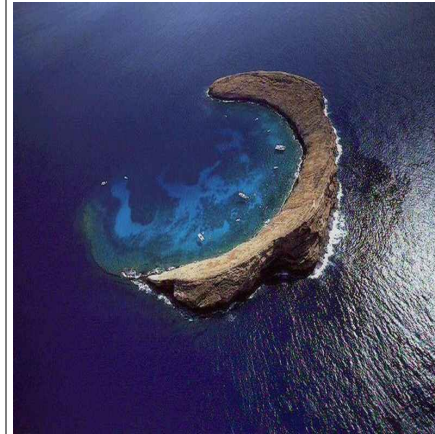


Geography
Picture
Dictionary

archipelago: a large group of islands



atoll: a ring of coral that encloses a pool of seawater



badlands: wasteland that has been carved into unusual shapes by wind and water



bay: a body of water that extends into the land



beach: a rocky or sandy edge of land along a body of water



butte: an isolated hill with sloping sides and a small, flat top



canyon: a deep valley with steep sides



cape: a point of land that juts out into water



cave: a hollow area in the earth with an opening to the outside



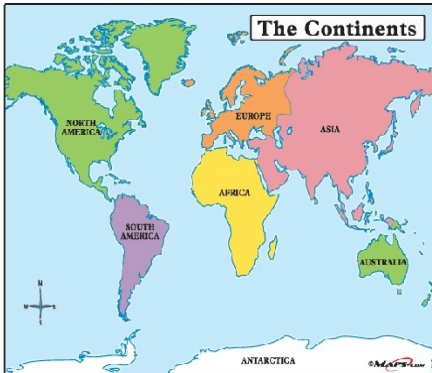
channel: a body of water that connects two larger bodies of water



cliff: a high, steep face of rock or earth



continent: one of the seven great land masses on earth



delta: a fan-shaped deposit of sand and mud at the mouth of a river



desert: a region of little rainfall where few plants and animals live



dune: a hill of sand formed by blowing wind



fjord: a long, narrow inlet of the sea between cliffs or slopes



forest: a large area of land covered with trees and other plants



geyser: a spring that spouts hot water and steam from time to time



glacier: a large mass of ice that moves very slowly down a mountain or through a valley



gulf: a large body of salt water that is partly enclosed by land



hill: a raised part of the earth's surface that is lower than a mountain



iceberg: a huge block of floating ice that has broken off a glacier



island: a piece of land that is surrounded by water



isthmus: a narrow strip of land that connects two larger land areas



jungle: an area of thick, tangled plants usually found near a river or a swamp



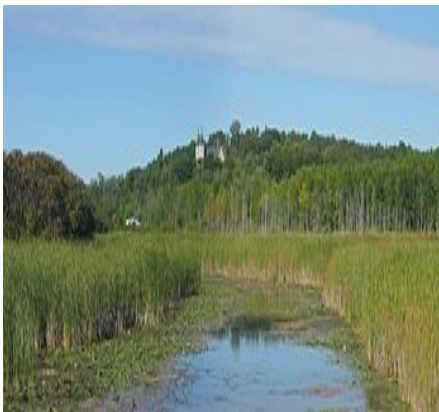
lagoon: a shallow body of water that is partly cut off from the sea



lake: an inland body of fresh or salt water



marsh: a low, wet area where grasses, rushes and cattails grow



mesa: a raised area with steep sides and a large, flat top



mountain: a high area of land with steep sides and a sharp peak



oasis: an isolated area of vegetation in a desert often surrounding a water source



ocean: the body of salt water that covers most of the earth



peninsula: an area of land that is nearly surrounded by water



plain: a large, low area of flat or rolling land with few trees



plateau: a flat area of land that is higher than the land around it



prairie: a region of flat or hilly land covered by tall grasses



river: a long body of water that flows over land



sea: a body of salt water that is partly enclosed by land



sound: a long wide ocean inlet between two bodies of land



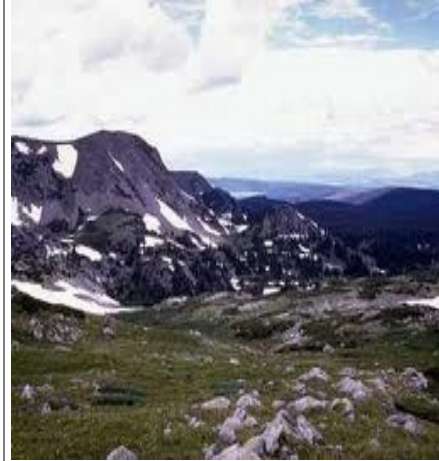
strait: a narrow body of water that connects two larger bodies of water



swamp: a low, wet area where trees and high shrubs grow



tundra: a cold, dry, treeless region where mosses, grasses and lichens grow



valley: an area of low land between mountains or hills



volcano: a hole in the earth's crust through which lava, gasses and ash are released



waterfall: a stream of water that falls from a high place



