

ADVERTISEMENT FOR BIDS
BRIGHTON AREA SCHOOLS
BRIGHTON HIGH SCHOOL

HOT FOOD COUNTER

The Brighton Area Schools Board of Education is accepting bids for a new Hot Food Counter with the attached specifications.

While any bid will be considered, the following is the attached is suggested criteria. Desired installation date would be the week of August 6th.

Your proposal marked **“SEALED BID: BRIGHTON AREA SCHOOLS – HOT FOOD COUNTER”** will be accepted **NO LATER THAN 12:00 NOON, Monday, June 4th, 2018 TO: BRIGHTON AREA SCHOOLS ADMINISTRATIVE OFFICE, Attn: Dr. Maria Gisting, Asst. Superintendent for Finance, 125 S. Church Street, Brighton, Michigan 48116.** Oral, telephone, fax, or electronic mail bids are invalid and will not receive consideration.

All bids will be publicly opened and read aloud at 2:00 p.m., Monday, June 4th, 2018 at the Brighton Area Schools Board Room, 125 S. Church Street, Brighton, Michigan 48116.

The Board of Education reserves the right to accept or reject any or all bids, either in whole or in part; to award contract to other than the low bidder; to waive any irregularities and/or informalities; and in general to make awards in any manner deemed to be in the best interests of the owner.

Roger Myers
Secretary
Brighton Area Schools

HLS66 Essence Hot Food Counter, 66"L x 34"W x 34"H, with welded 1" stainless steel tubular base, removable 18 gauge stainless steel undershelf and 6" adjustable stainless steel legs

1 Modify counter to island style
1 Solid Surface Top with flat extended top tray slide on (2) sides, island style
1 cut out in top for drop-in
2 Tray slide runners, stainless steel, in solid surface
1 Hot well for (4) full size pans, drop-in, 1,200 watts per well, with manifolded drains, HWBI-4M with bottom exit to 3/4" ball valve
1 FS-DS-Food shield, double service (island). Verify black powder coat or stainless steel brushed finish
2 Food shield glass end panel
1 LED Light fixture installed in food shield and wired to junction box in base cabinet
2 J-box with cord and plug
1 Laminate Front Panel
1 Laminate Back Panel with hinged doors
2 Laminate End Panel
1 Kick plate. Verify black powder coat or stainless steel brushed finish

1 **CS30 Essence In-line Cashier Station**, 30"L x 34"W x 34"H, includes cash drawer with insert tray, grommet hole and receptacle, on 6" legs

Modify counter to 48"L Modify counter to island style
Solid Surface Top with flat extended top tray slide on (2) sides, island style

2 Tray slide runners, stainless steel, in solid surface
1 Laminate Front Panel
1 Laminate Back Panel with hinged doors
1 Laminate End Panel
1 Kick plate. Verify black powder coat or stainless steel brushed finish

Installation & FREIGHT COSTS to zip 48116

DISPLAY CASE, REFRIGERATED, DUAL SERVE

Structural Concepts Model No. FSC663R

Oasis® Self-Service Refrigerated Dual Sided Case, 75-3/8"W, open front, (3) non-lit metal shelves each side, top light, black interior & lower front panel, (2) full end panels with stainless mirrored interior, includes price tag moulding (matches interior color), casters, Breeze-E (Type II) with EnergyWise self-contained refrigeration system, cETLus, ETL-Sanitation

1 ea NOTE: If GFCI is required, a GFCI breaker MUST be used in lieu of a GFCI receptacle

1 ea 1 yr. parts & labor warranty, 5 yr. compressor warranty, standard

1 ea Breeze-E (Type II) with EnergyWise self-contained refrigeration with evaporator pan, air intake one side/air discharge out other side, standard

1 ea 208-240v/60/1ph, 20.88 amps, standard

1 ea 6 ft straight blade power cord with NEMA 6-30P, standard

1 ea NOTE: Compressor air intake in one side/air discharge out other side, all lower panels cannot be blocked

1 ea Base Support: Casters, standard

1 ea Exterior: Wilsonart or Formica NON-PREMIUM laminate (Color chart available from factory rep or access color selections via www.wilsonart.com or www.formica.com)

1 ea NOTE: SCC will not be responsible for additional charges incurred for Premium or other Manufacturer's laminate selections not originally quoted

1 ea Lower Front Panel: Black, standard

1 ea Left End Panel: Cutaway with vinyl edging in lieu of standard full end panel

1 ea Right End Panel: Cutaway with vinyl edging in lieu of standard full end panel

1 ea (3) LED Lighted non-adjustable metal shelves

1 ea Roll-down security cover, locking, both side (inc. ht. to 70-3/8") (must be chosen when case is ordered)

Installation & FREIGHT COSTS to zip 48116

Oasis®

PROJECT: _____
 DATE: _____

Product Specifications

Refrigerated Self-Service Dual Sided Case

- FSC463R
- FSC663R

Lengths include end panels
 47"L x 48"D x 63"H
 75-3/8"L x 48"D x 63"H



NOTE: SHOWN W/ OPTIONAL CUTAWAY END PANELS



STANDARD FEATURES

- Breeze~E (Type-II) w/ EnergyWise s/c refrigeration
- 6' power cord
- Casters
- Compressor air intake in one side & out other side. All louvered panels cannot be blocked
- LED 3500K top light(s)
- NOTE: Electrical specs reflect highest Amp draw using lighted shelves option
- One year parts & labor; 5 year compressor warranty
- Price tag molding (matches interior color)
- Removable deck pans provide complete access to evaporator coil & refrigeration connections

Features	Standard	Options
EXTERIOR COLOR	<input type="checkbox"/> Laminated (non-premium) Confirm pattern/grain direction	<input type="checkbox"/> Laminated (premium) Confirm pattern/grain direction <input type="checkbox"/> Stainless steel (includes lower front panel)
INTERIOR COLOR	<input type="checkbox"/> Black	<input type="checkbox"/> Stainless steel
LOWER FRONT PANEL COLOR	<input type="checkbox"/> Black	<input checked="" type="checkbox"/> Stainless steel (w/stainless ext. only)
END PANEL LEFT	<input type="checkbox"/> Full end panel w/stainless mirrored interior (vinyl edging)	<input type="checkbox"/> Cutaway end panel (vinyl edge matches interior color)
END PANEL RIGHT	<input type="checkbox"/> Full end panel w/stainless mirrored interior (vinyl edging)	<input checked="" type="checkbox"/> Cutaway end panel (vinyl edge matches interior color)
SHELVING	<input type="checkbox"/> Non-adjustable metal shelves, non-lighted	<input type="checkbox"/> Non-adjustable metal shelves, lighted (LED 3500K)
REFRIGERATION	<input type="checkbox"/> Breeze~E (Type-II) w/ EnergyWise s/c refrigeration	<input type="checkbox"/> Remote DX refrigeration
MISCELLANEOUS		<input type="checkbox"/> Roll-down security cover, locking (inc. ht. to 70-3/8") (2) <input type="checkbox"/> Second year parts & labor warranty

ACCESSORIES

- Night curtain, retractable, non-locking (2)
 - Solid security cover, removable, locking (2)
- Option Notes: 1 - N/A w/Roll-down security cover
 2 - N/A w/Roll-down security cover



888 E. Porter Rd.
Muskegon, MI 49441
Ph. 231-798-8888
Fx. 231-798-4960
www.structuralconcepts.com

**Note: Information is subject to change at any time.
Visit www.structuralconcepts.com for the most current specs.**

Revised 11/9/2017

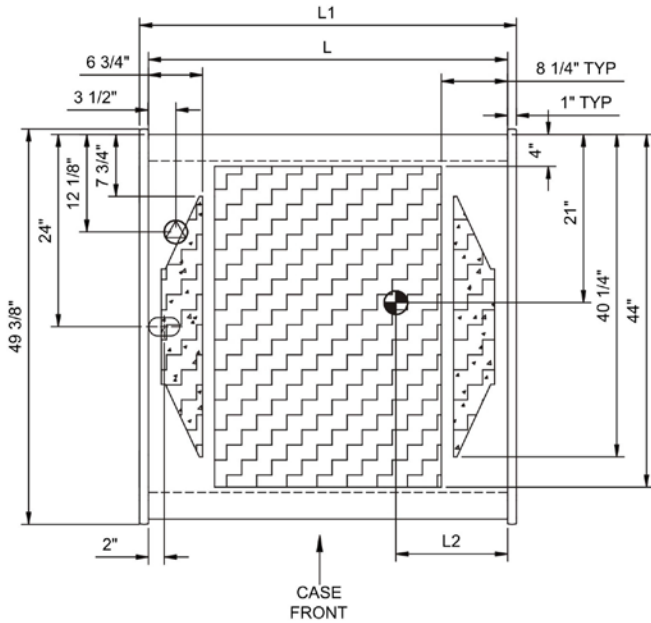
20096583

Oasis®

Product Specifications

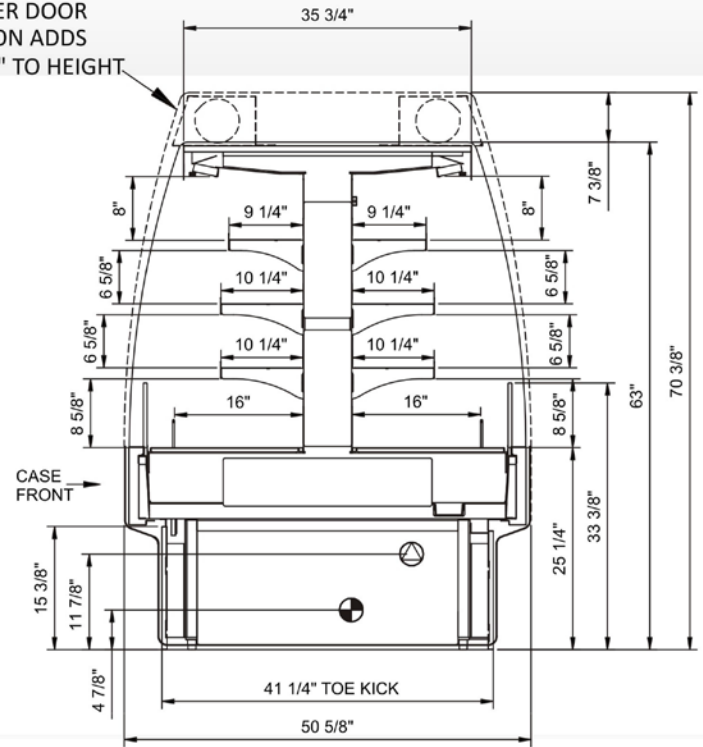
Intended Environment: Type II - Designed to operate in ambient conditions of 80°F and 60% relative humidity unless noted otherwise in system information below.	
Zone	Intended Product To Be Displayed
All	Packaged refrigerated products
Warmest Avg Prod Temp ° F	
40	

PLAN VIEW



SIDE VIEW

ROLLER DOOR
OPTION ADDS
7 3/8" TO HEIGHT



NOTE: ALL DIMENSIONS APPROXIMATE

-  **ELECTRICAL JUNCTION BOX**
(SUPPLIED WITH 6" LEADS OR POWER CORD).
-  **REFRIGERATION LINE CONNECTION.**
-  **SELF-CONTAINED CASE SERVICE ACCESS AREA.**
-  **LOCATION OF DRAIN TUBE FOR REMOTE REF.**
ONLY (SUPPLIED WITH 3/4" OR 1 1/2" PVC TUBE).
-  **REMOTE FLOOR SINK & UTILITIES**
ACCESS AREA.
-  **DRY CASE SERVICE ACCESS AREA.**

Model Technical Specifications

Model	L"	L1"	L2"	System Circuit Volts			Phs	Freq	Amps ***	Watts	Wires	NEMA Plug	SST	BTUH	Est Wt
FSC463R	N/A	47.00	13.88	Remote(Type II)	Circuit #1	110-120	1	60	2.96	180	2+G	Leads Single	20.00	8900	1,100
				Self-Contained	Circuit #1	208-240	1	60	13.56	2,133	2+G	6-20P or L6-20P	N/A	N/A	
FSC663R	N/A	75.38	13.88	Remote(Type I)	Circuit #1	110-120	1	60	3.46	250	2+G	Leads Single	20.00	12500	2,000
				Self-Contained	Circuit #1	208-240	1	60	20.88	2,158	2+G	6-30P or L6-30P	N/A	N/A	

*** Does not include electric defrost on freezer models.

Important Notes:

- 1) ELECTRICAL NOTE: If GFCI is required, a GFCI breaker MUST be used in lieu of a GFCI receptacle
- 2) Electrical specs reflect highest Amp draw using lighted shelves option

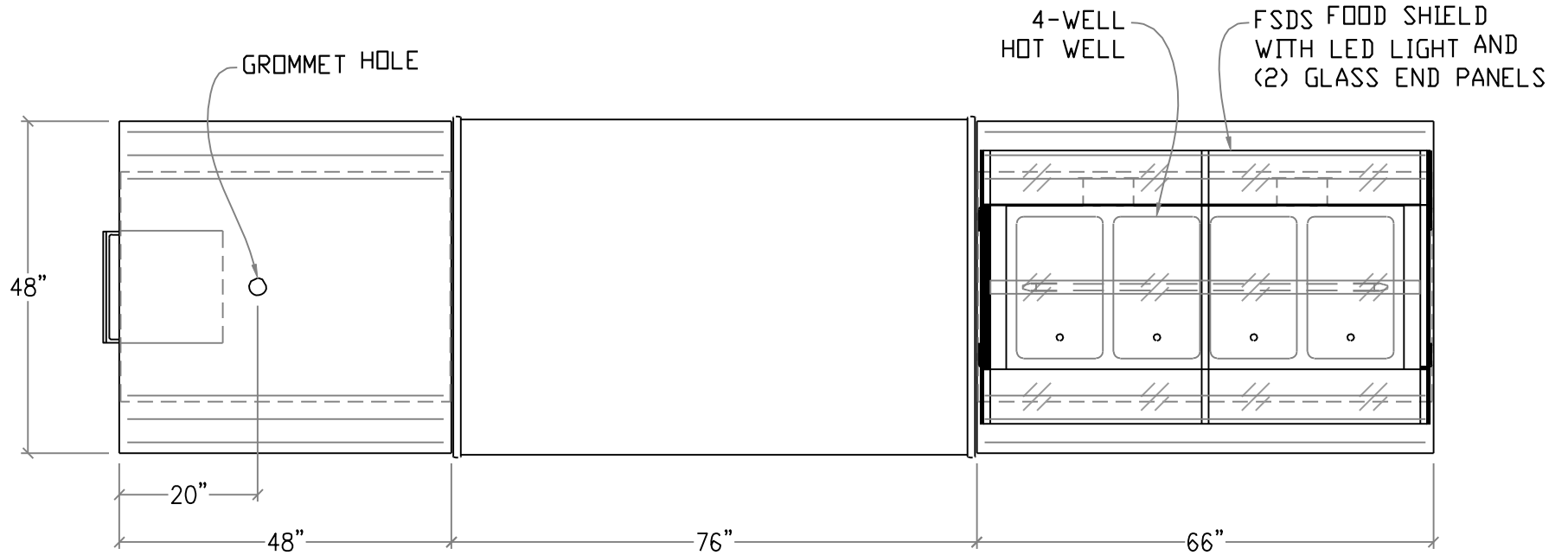
Regulatory Approvals:

All Models	Accordance with AHRI Std 1200 ETL Listed to UL 471 ETL Listed to CAN/CSA 22.2 No. 120 ETL Sanitation to NSF 7
------------	--



In Accordance with
AHRI Std 1200

DOE 2017
Energy Efficiency
Compliant



ITEM #3
CS30-MOD
CASHIER COUNTER

ITEM #2
SC FSC663R
BY OTHERS

ITEM #1
HLS66-MOD
HOT FOOD COUNTER

PRELIMINARY DRAWING NOT FOR CONSTRUCTION

PROJECT NO.
3210.03.19.18E

DATE: 03/19/18

SCALE: 1/2"=1'-0"

DRAWN BY: SMP

AUTOCAD A SIZE

BRIGHTON HIGH SCHOOL
BRIGHTON, MI

MULTITERIA
1444 N FARNSWORTH AVE
AURORA, IL 60505

MULTITERIA RESERVES PROPRIETARY RIGHTS TO THIS DRAWING AND THE DATA SHOWN THEREON. SAID DRAWING AND/OR DATA ARE CLASSIFIED AND CONFIDENTIAL AND ARE NOT TO BE USED OR REPRODUCED FOR ANY PURPOSE WITHOUT WRITTEN CONSENT OF MULTITERIA

