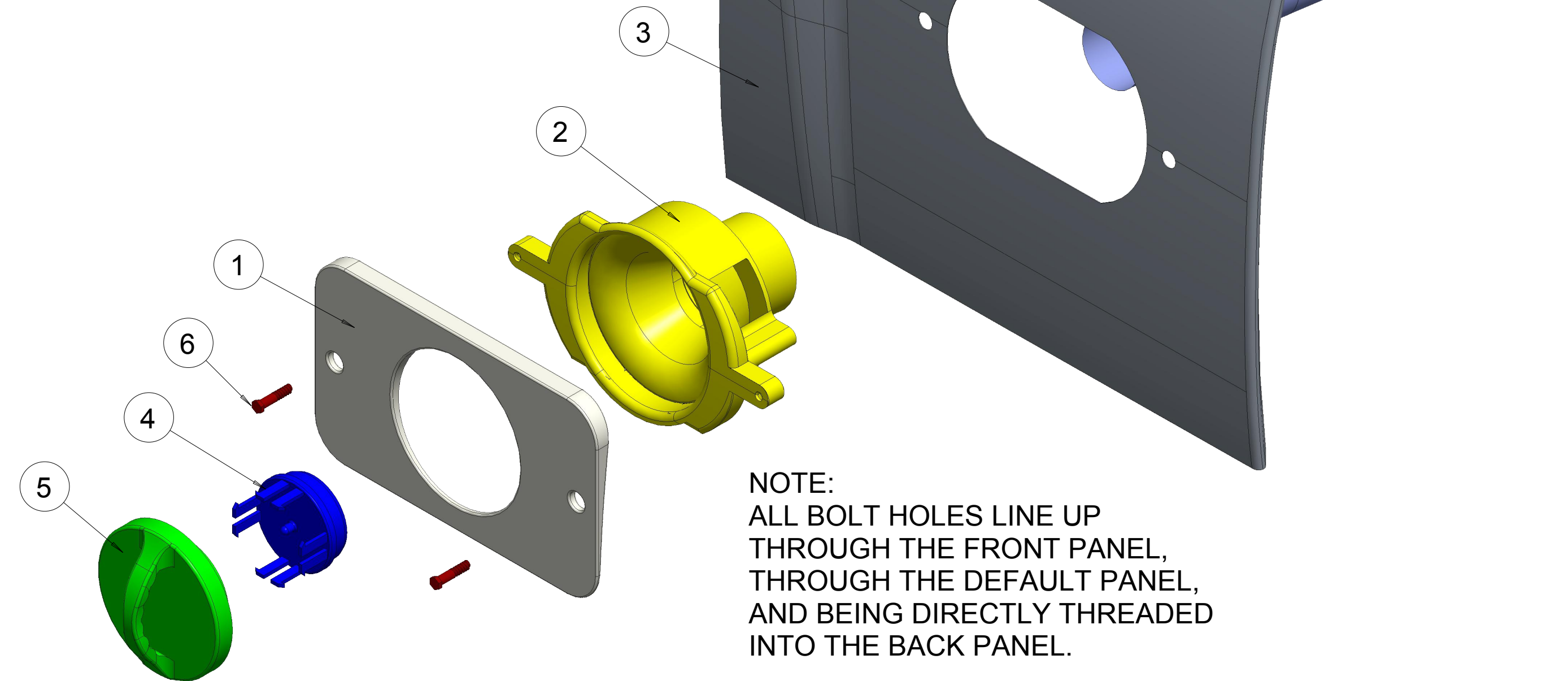
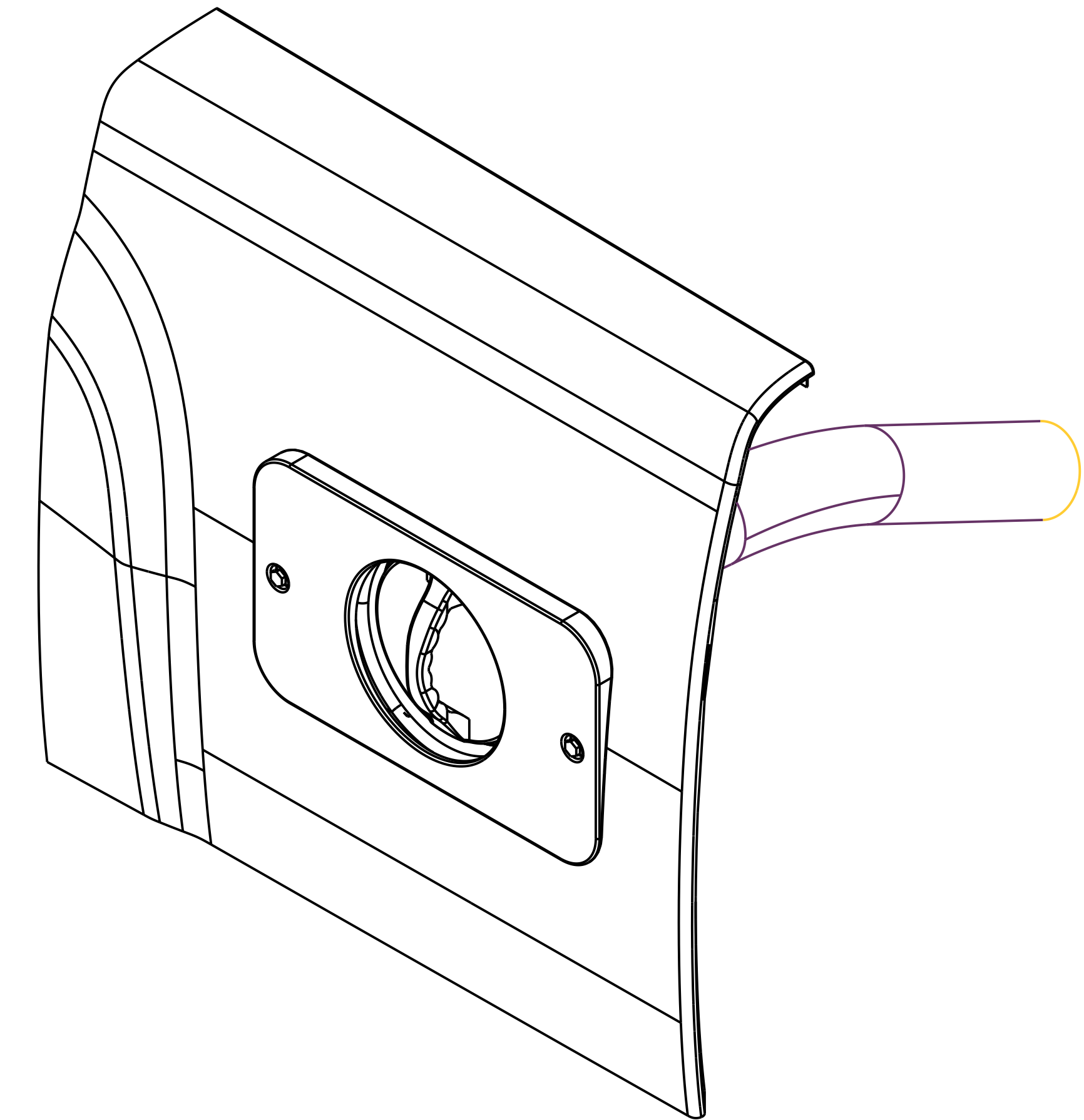


NOTE:  
GAS CAP AND CAP HANDLE IS HELD TO THE BACK PANEL BY STEEL CABLE WRAPPED IN A FLEXIBLE RUBBER COATING. THE FUEL CAP DISCONNECTS FROM THE THREADED FUEL TUBE AND HANGS FROM THE CABLE. THERE IS A 5mm GAP AROUND THE GAS CAP AND FRONT PANEL.

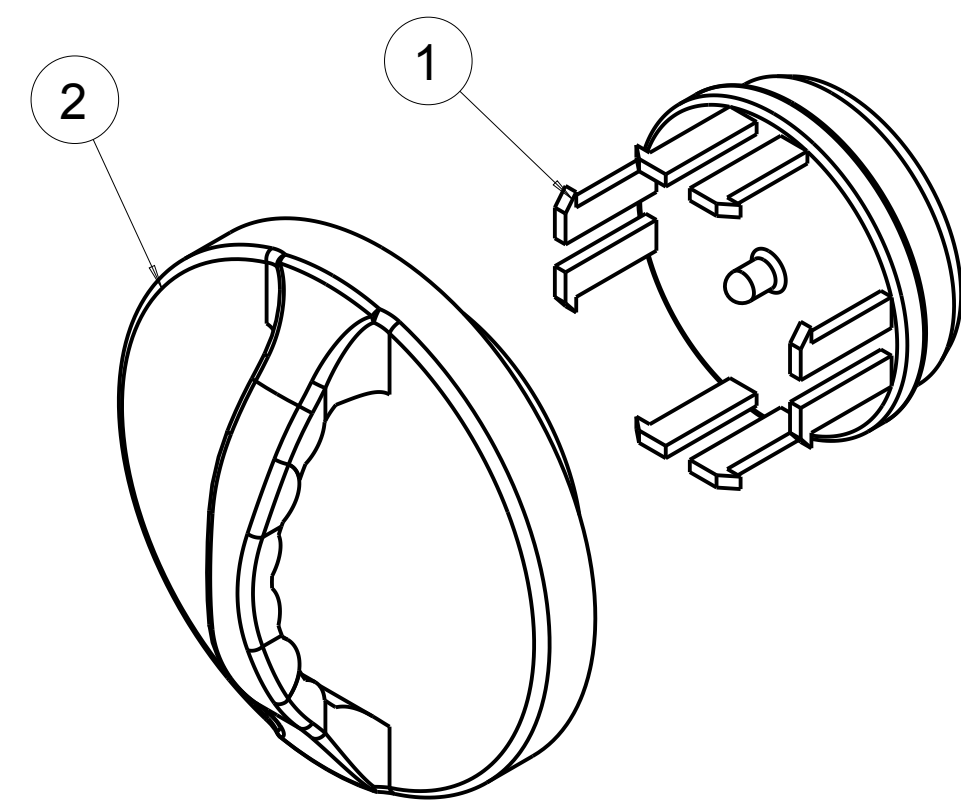
B.O.M.		
PART NUMBER	PART NAME	PART QTY.
1	FRONT PANEL	1
2	BACK PANEL	1
3	DEFAULT PANEL	1
4	GAS CAP	1
5	CAP HANDLE	1
6	PANEL BOLTS	2



NOTE:  
ALL BOLT HOLES LINE UP THROUGH THE FRONT PANEL, THROUGH THE DEFAULT PANEL, AND BEING DIRECTLY THREADED INTO THE BACK PANEL.

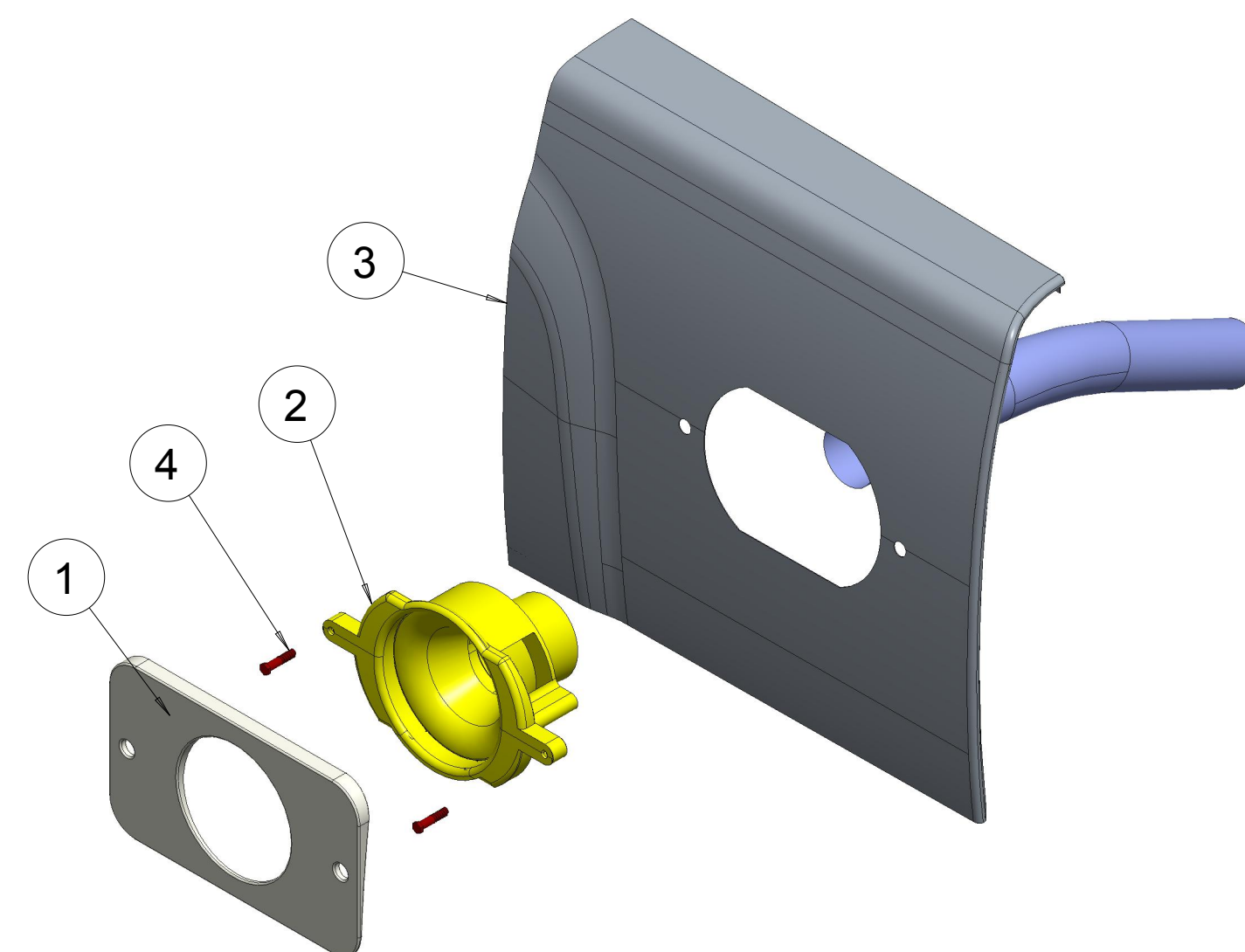


B.O.M.		
PART NUMBER	PART NAME	PART QTY.
1	GAS CAP	1
2	CAP HANDLE	1

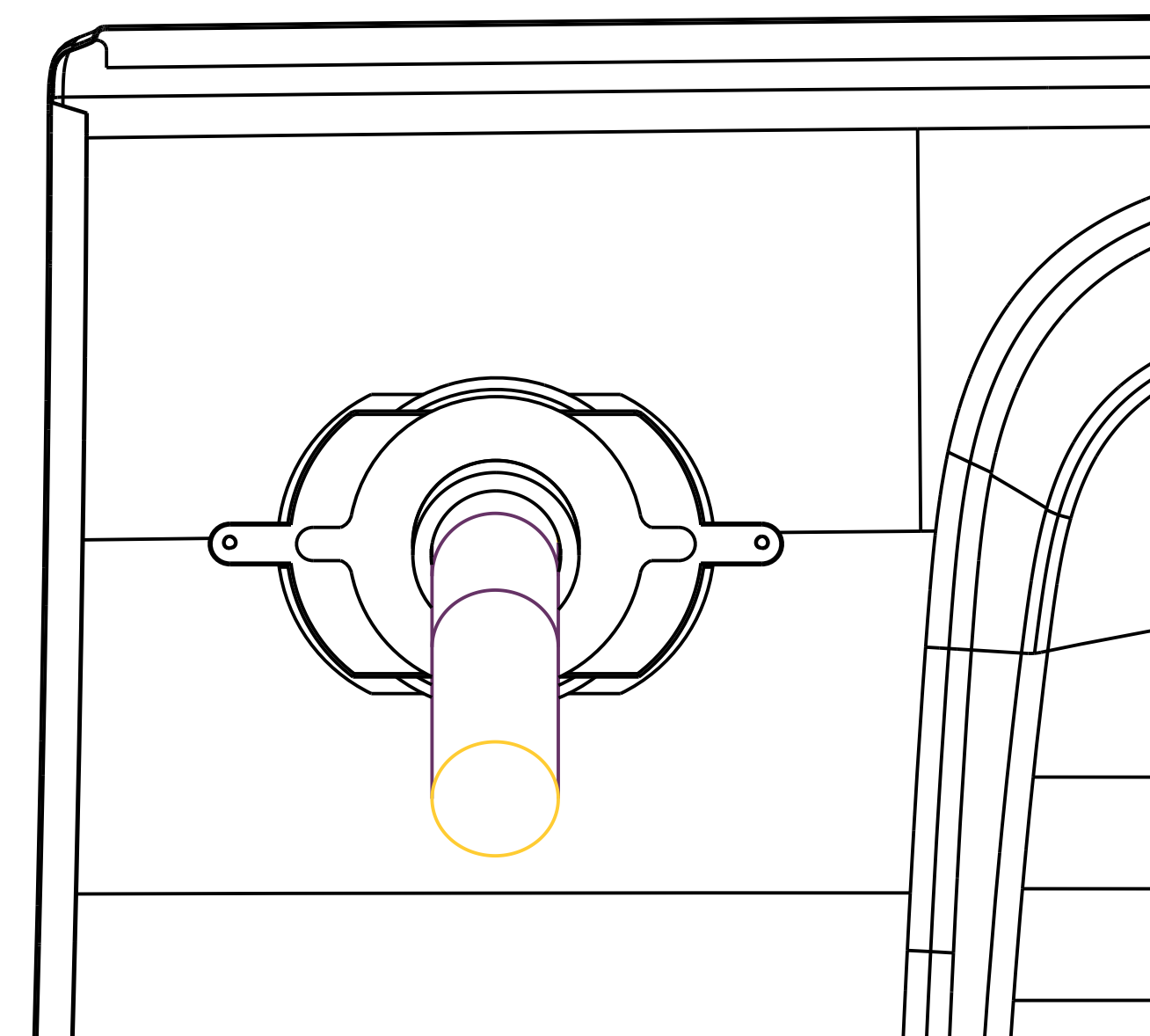


NOTE:  
FUEL CAP AND CAP HANDLE ARE ASSEMBLED BY AN INTERFERENCE FIT FORMED BY PRESSING THE TWO PIECES TOGETHER AND HAVING THE MALE SIDE INTERLOCK WITH THE FEMALE SIDE. THE CENTER ROD IS FOR THE STEELCABLE TO WRAP AROUND, GIVING IT A STONG POINT TO HOLD THE ASSEMBLY TO THE CAR. THIS MEANS IT OPENS 180 DEGREES AND THERE'S NO FUEL DOOR.

B.O.M.		
PART NUMBER	PART NAME	PART QTY.
1	FRONT PANEL	1
2	BACK PANEL	1
3	DEFAULT PANEL	1
4	PANEL BOLTS	2



NOTE:  
BACK PANEL IS ATTACHED TO THE FRONT PANEL BY BOLTS. THEY PASS THROUGH THE MAIN BODY PANEL OF THE TRUCK. THE BACK PANEL IS THREADED TO FIT THE PANEL BOLTS. THE FUEL TUBE IS HELD IN TO BACK PANEL BY WELDING THEM TOGETHER.



NOTE:  
MY INSPIRATION OF THE OPEN CAP, CAME FROM ME DESIGNING A WATER BOTTLE IN MY DESIGN CLASS. THE WATER BOTTLE WAS LIGHT AND EASY TO ASSEMBLE, WHICH I THOUGHT WAS PRACTICAL FOR A CAR FUEL DOOR. I DIDN'T COPY THE WATER BOTTLE, BUT I COPIED THE IDEA THAT THE CAP CAN JUST DIRECTLY ISERT. THE STEEL CABLE CONNECTION MAKES IT STRONG AND DIFFIULT TO STEAL.

STUDENT NAME:	LUCAS WENDERSKI
SCHOOL:	BRIGHTON HIGH SCHOOL
GRADE LEVEL:	12
CATEGORY:	DESIGN CONCEPT
EMAIL ADDRESS:	WenderskiLA17@brightonk12.com
TEACHER NAME:	MR. JOURDEN