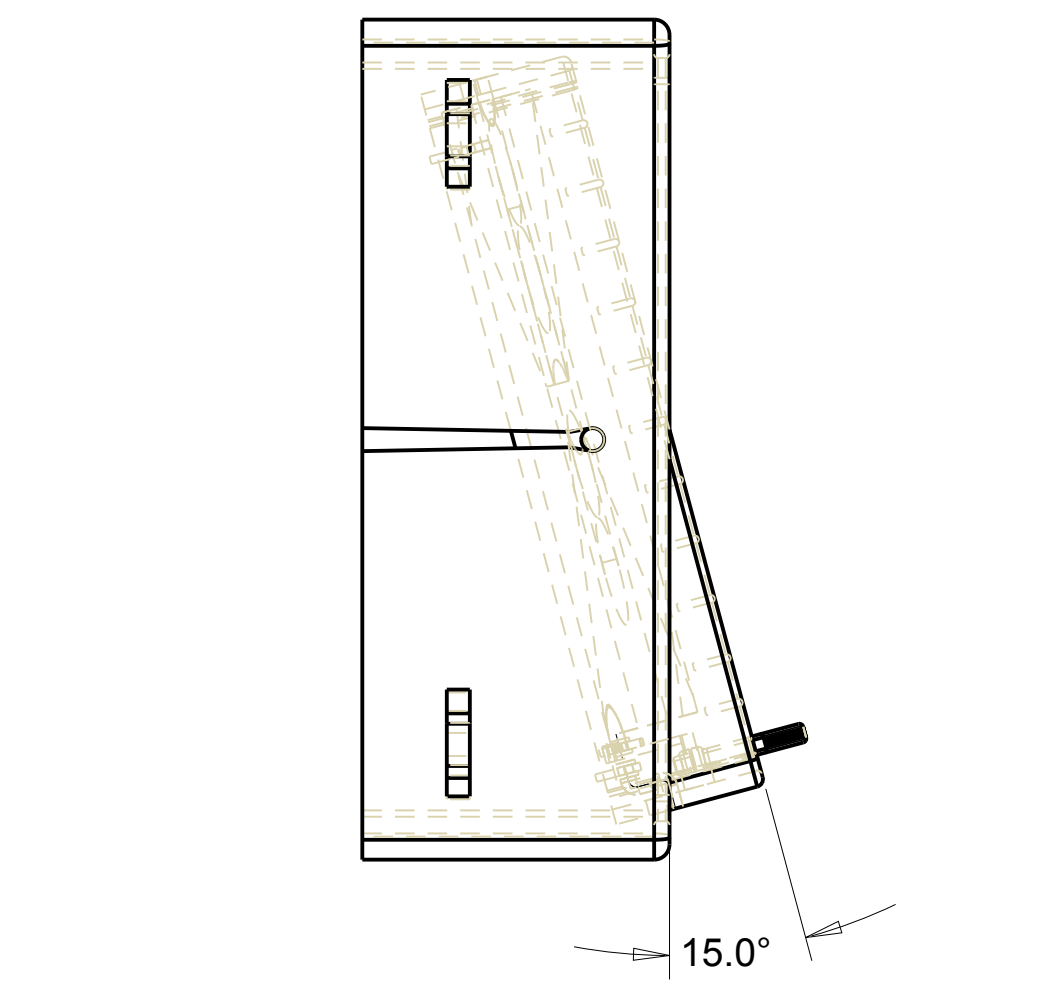
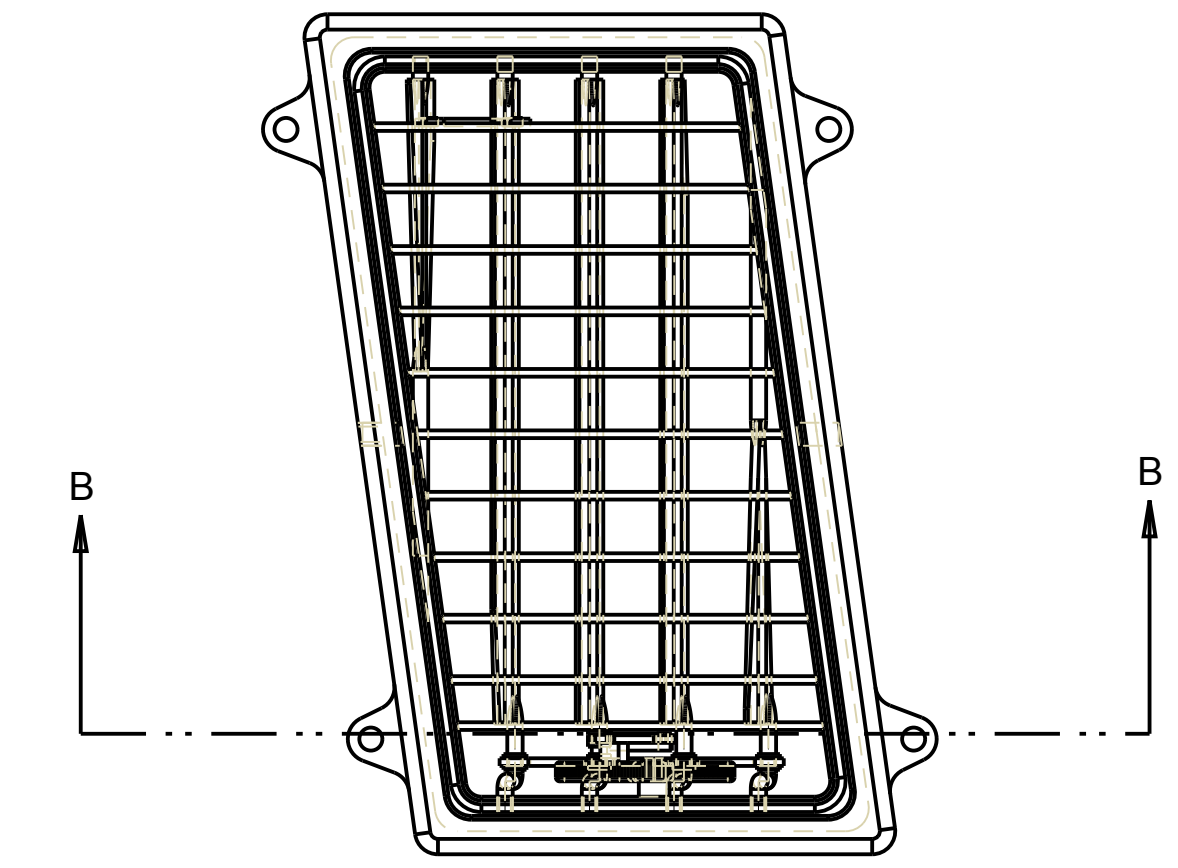


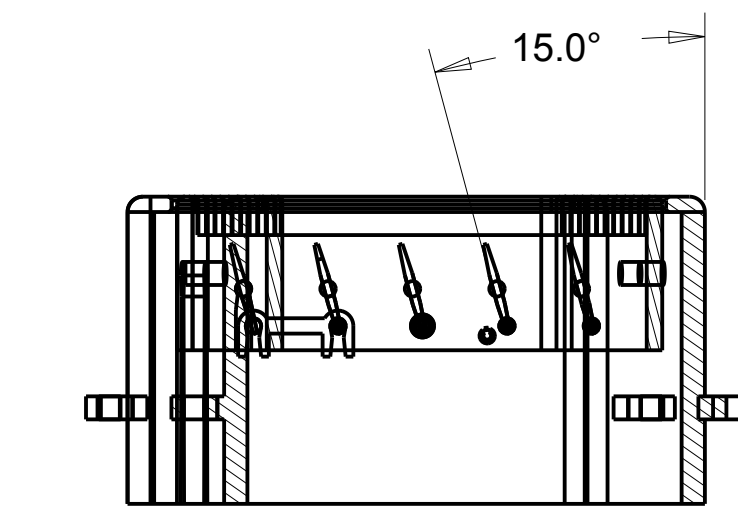
FULLY ASSEMBLED ORTHOGRAPHIC VIEWS



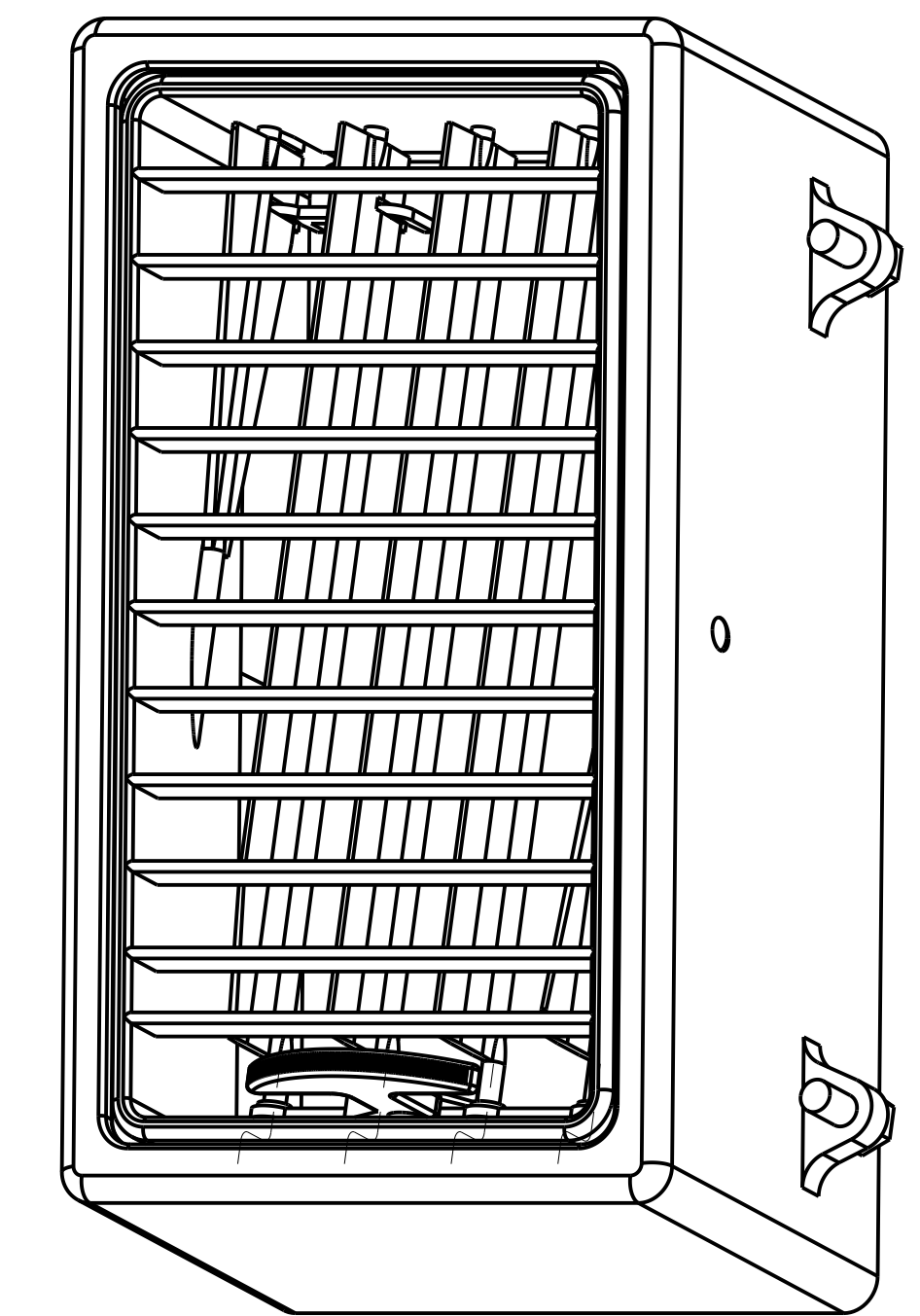
VANES ANGLED 15° VERTICALLY TOWARDS DRIVER



← DRIVER

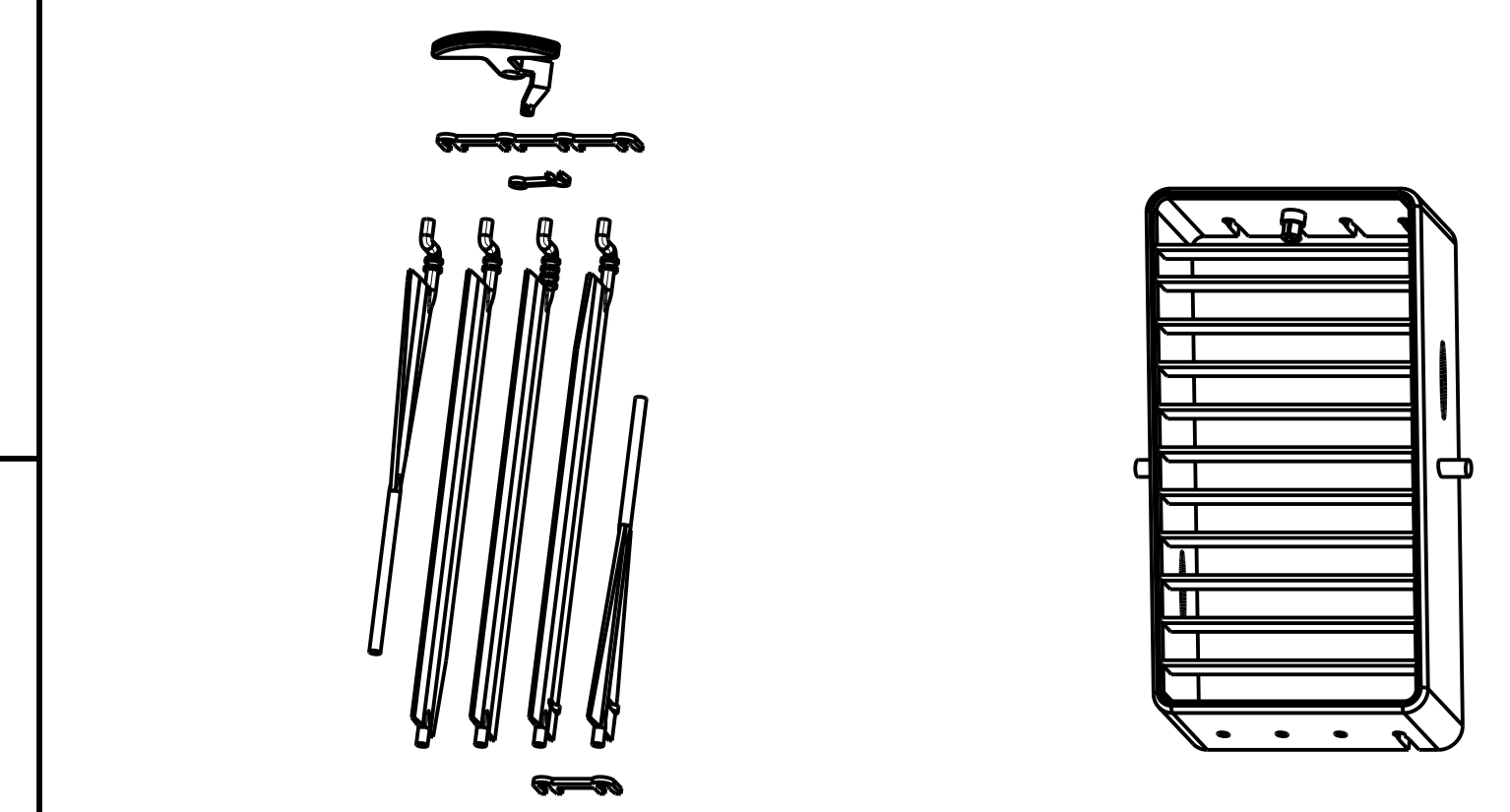
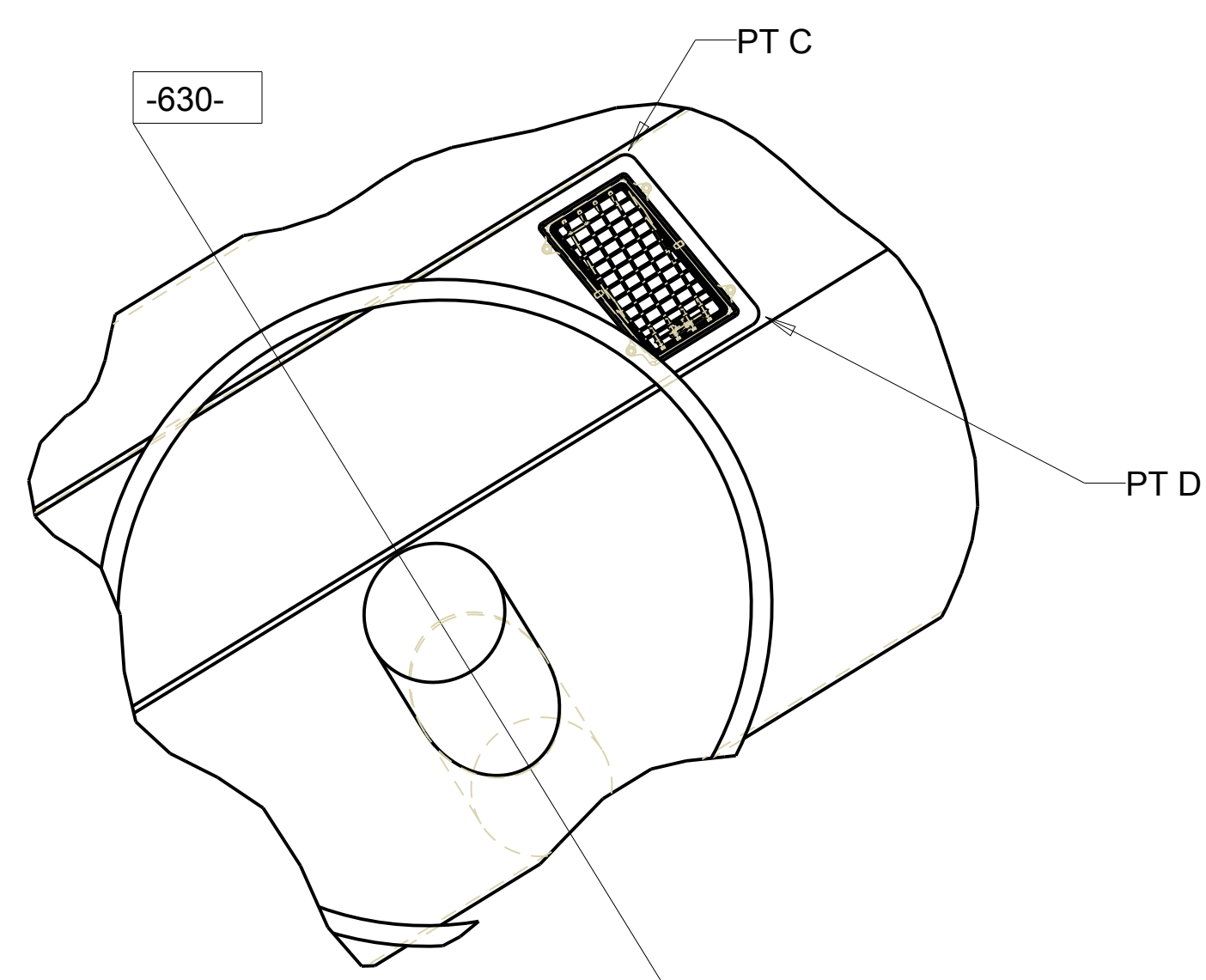


SECTION B-B  
VANES ANGLED 15° HORIZONTALLY TOWARDS DRIVER



LEVEL A  
METRIC

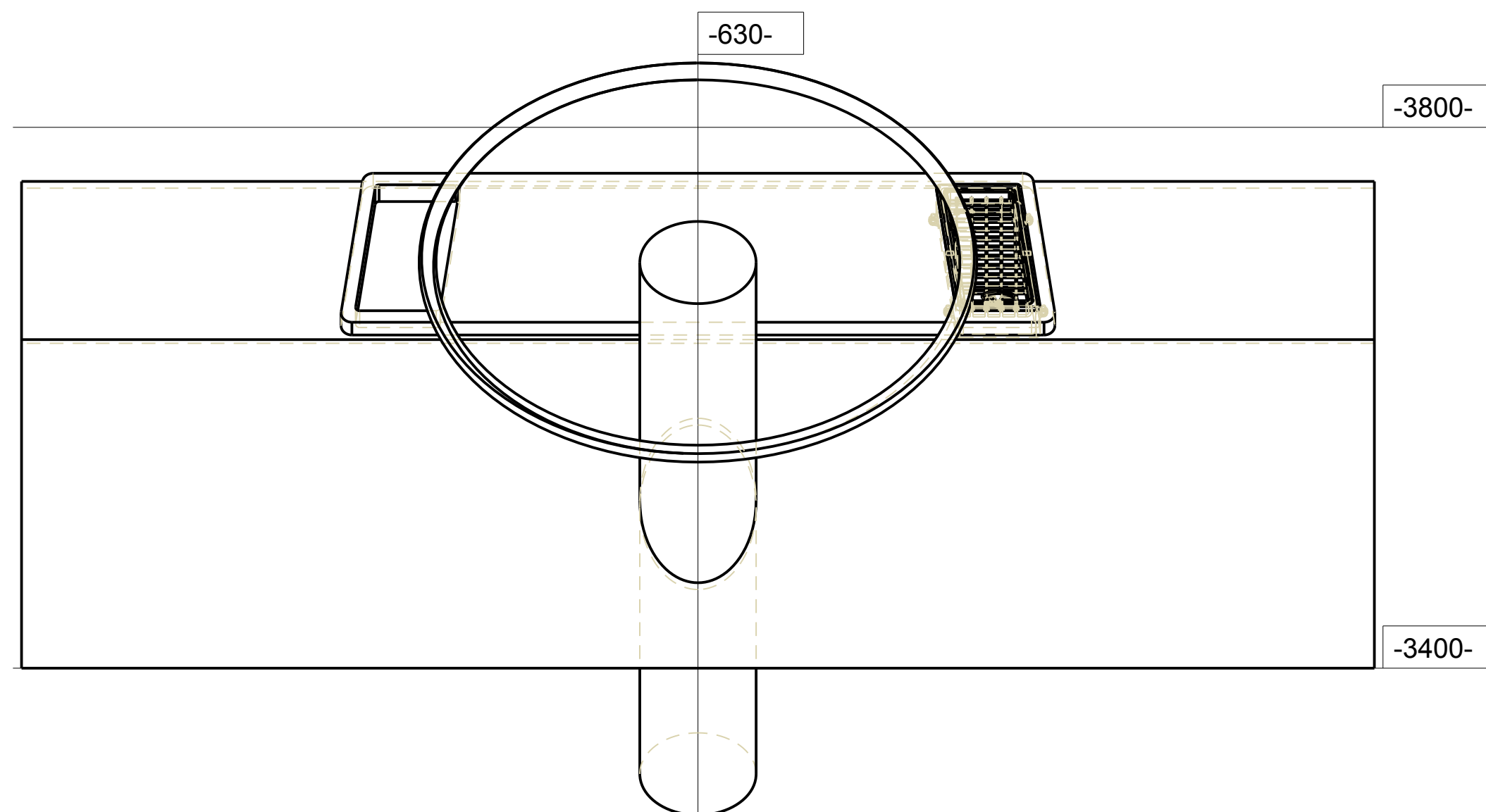
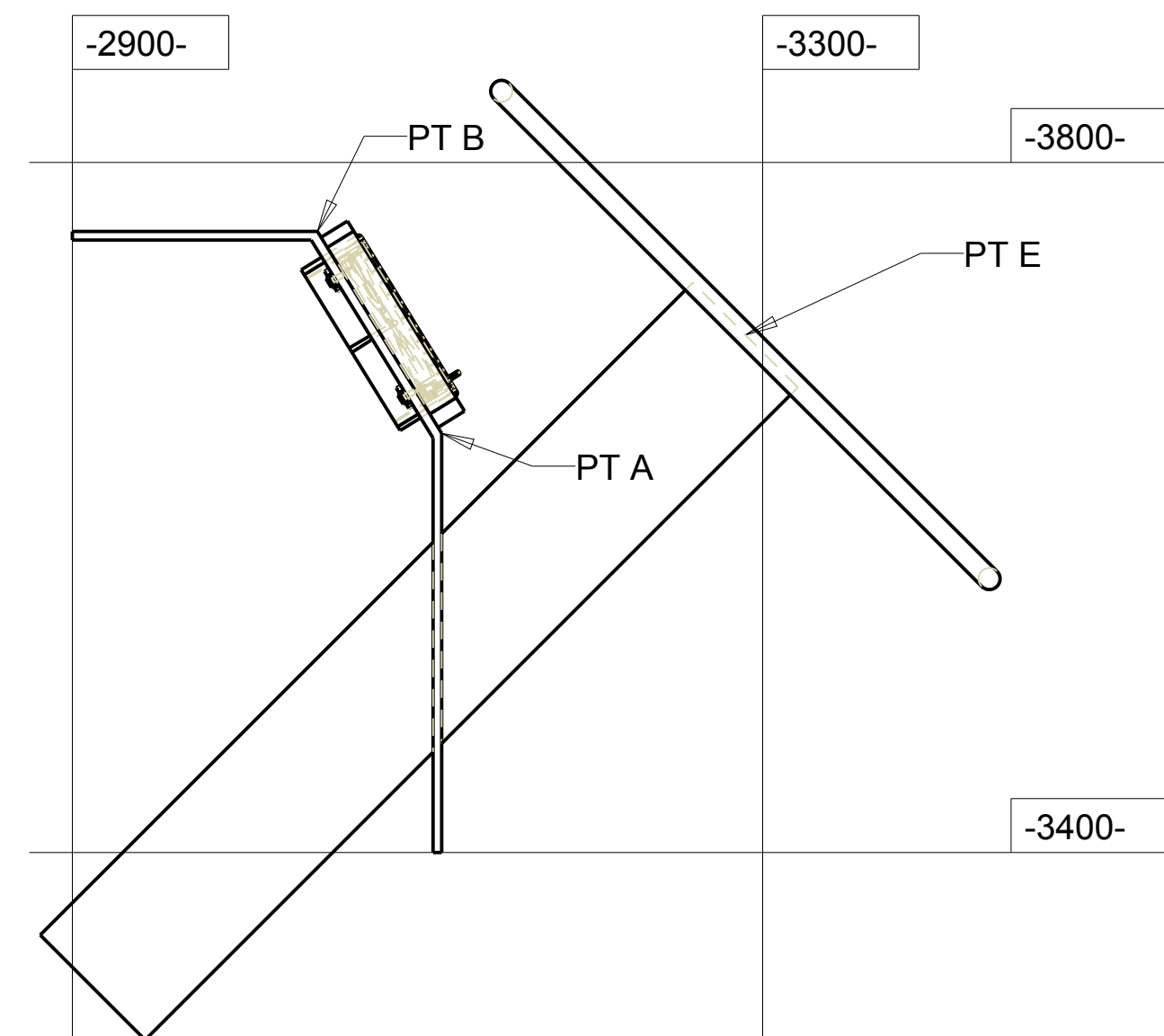
FULLY ASSEMBLED



DETAIL OF INTERIOR MECHANISMS

POINTS GIVEN

	L	W	H
PT A	3114	-630	3643
PT B	3042	-630	3760
PT C	3042	-383	3760
PT D	3114	-365	3643
PT E	3290	-630	3700



NOTES: A/C OUTLET WILL BE ATTACHED TO THE DASHBOARD USING FOUR M3 X 8 SCREWS (PART 12)  
ALL PIECES OF THE A/C OUTLET ASSEMBLY ARE DESIGNED TO SNAP TOGETHER WITHOUT THE USE OF FASTENERS

12	M3 X 8	4	STEEL
11	SECONDARY LINK	1	ABS
10	MAIN LINK	1	ABS
9	CONTROL LINK	1	ABS
8	CONTROL WHEEL	1	ABS
7	FAR RIGHT VANE	1	ABS
6	RIGHT VANE	1	ABS
5	CENTER VANE	1	ABS
4	LEFT VANE	1	ABS
3	FAR LEFT VANE	1	ABS
2	VANE GUIDE	1	ABS
1	SHELL	1	ABS
PART #	PART NAME	QTY.	MAT.

CAD SYSTEM & VERSION: PRO E WILDFIRE 5 CREO  
AMERICAN SOCIETY OF BODY ENGINEERS DESIGN COMPETITION

SCHOOL NAME: BRIGHTON HIGH SCHOOL	SCALE: VARIES
STUDENT NAME: JAMES WILLIAM HOLPER	DATE: 1/26/12
PART NAME: A/C OUTLET	