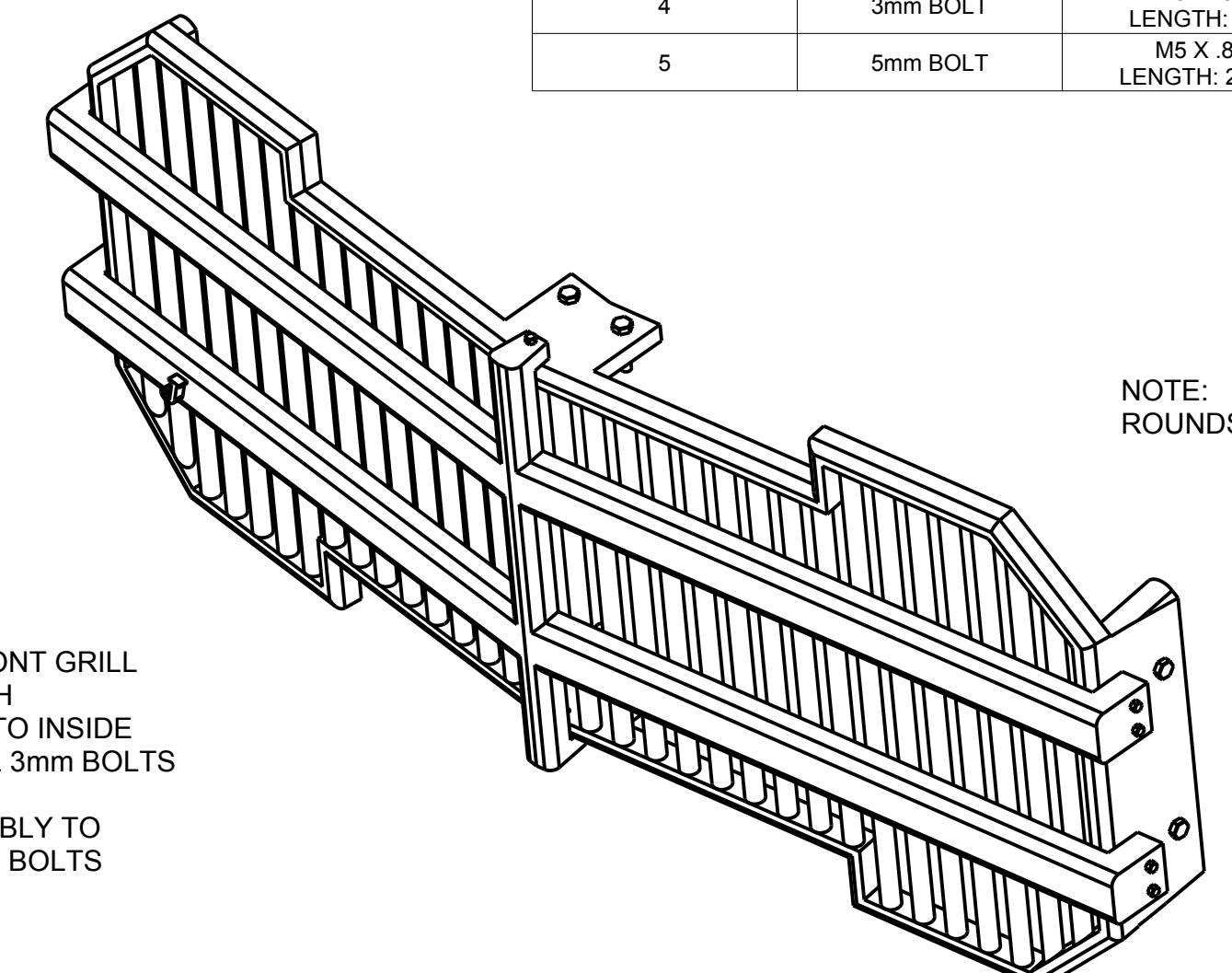
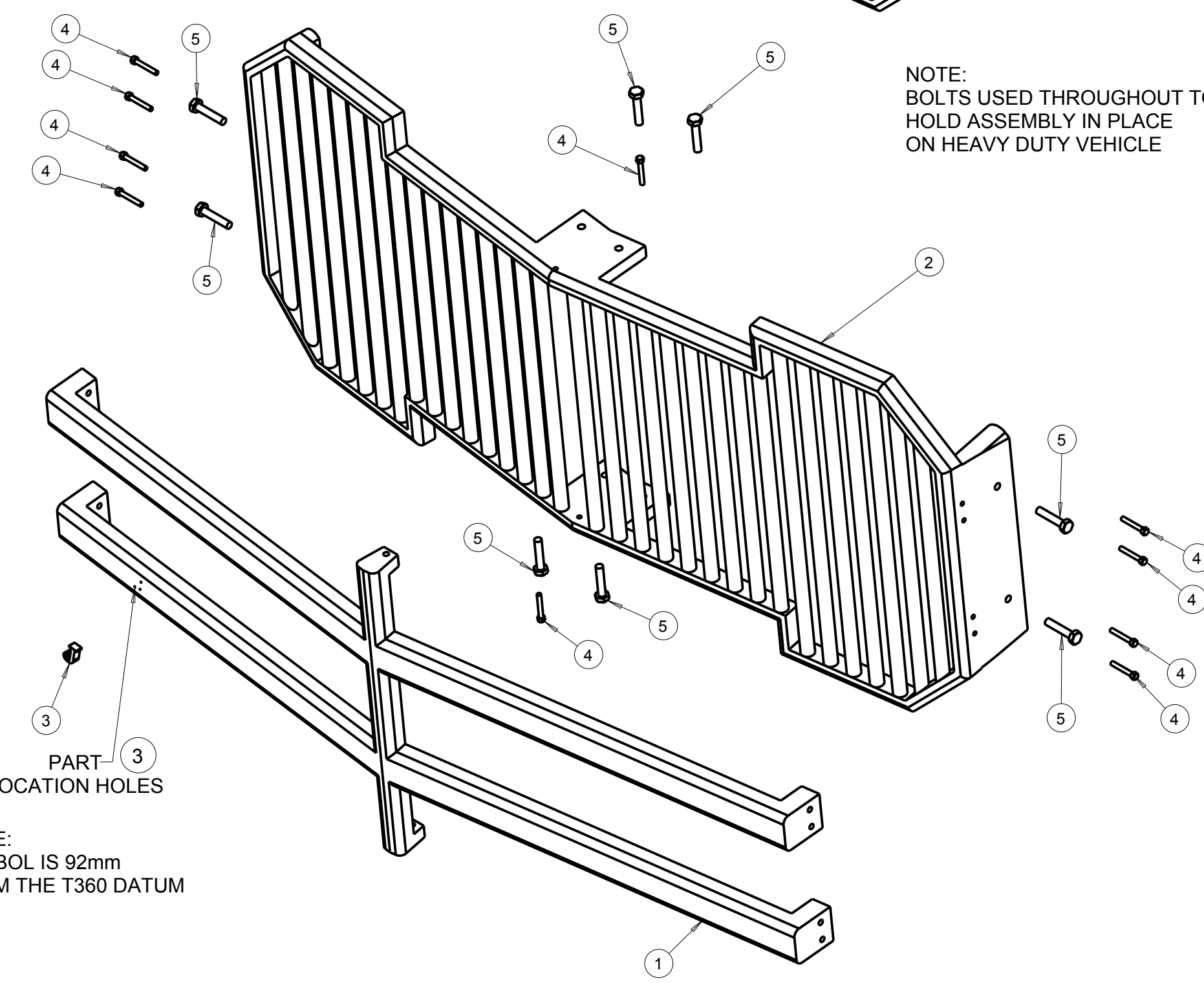


PART NUMBER	NAME	REMARKS	QUANTITY
1	FRONT GRILL		1
2	INSIDE GRILL		1
3	BADGE		1
4	3mm BOLT	M3 X .5 LENGTH: 23	10
5	5mm BOLT	M5 X .8 LENGTH: 28.5	8

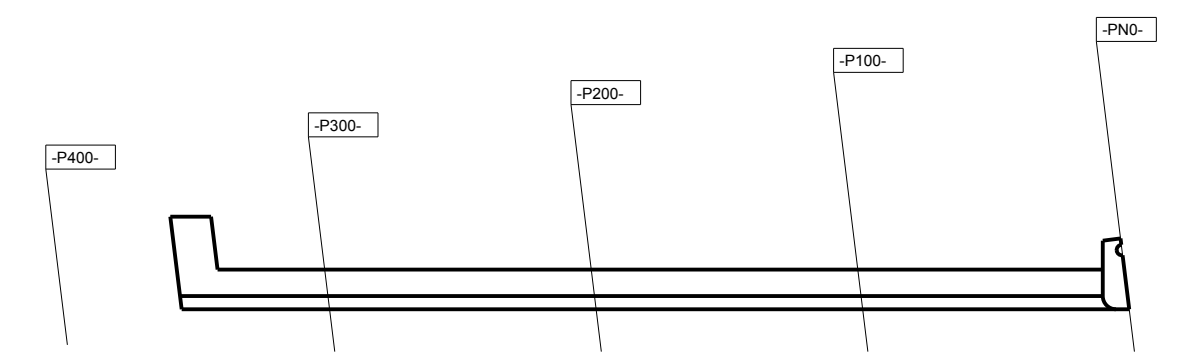
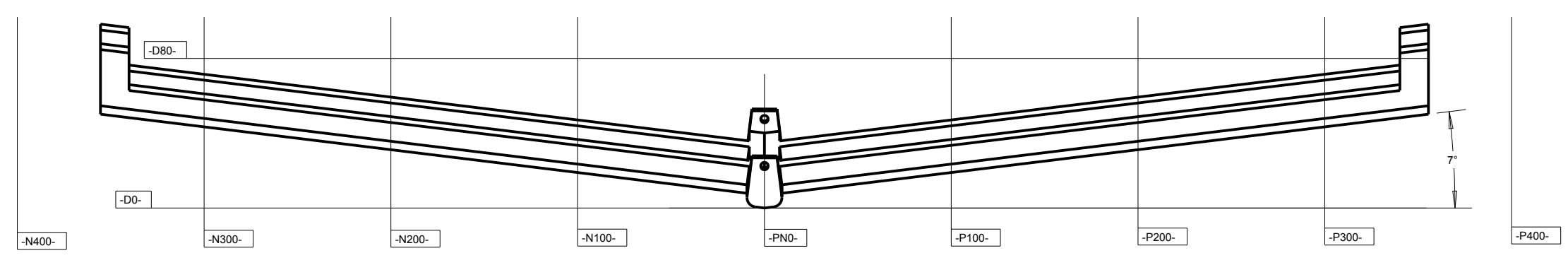
ENGINEERING DESIGN METRIC



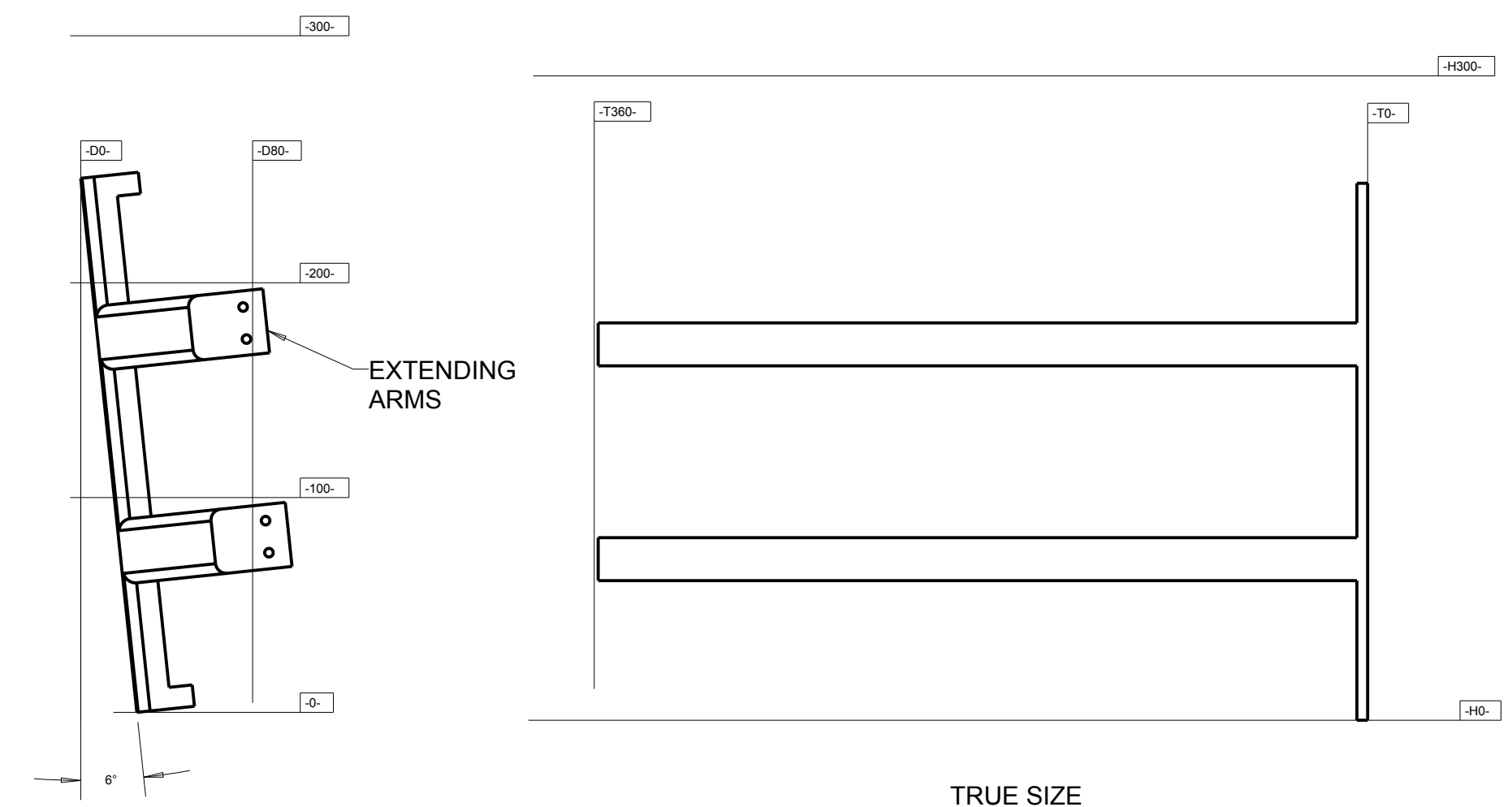
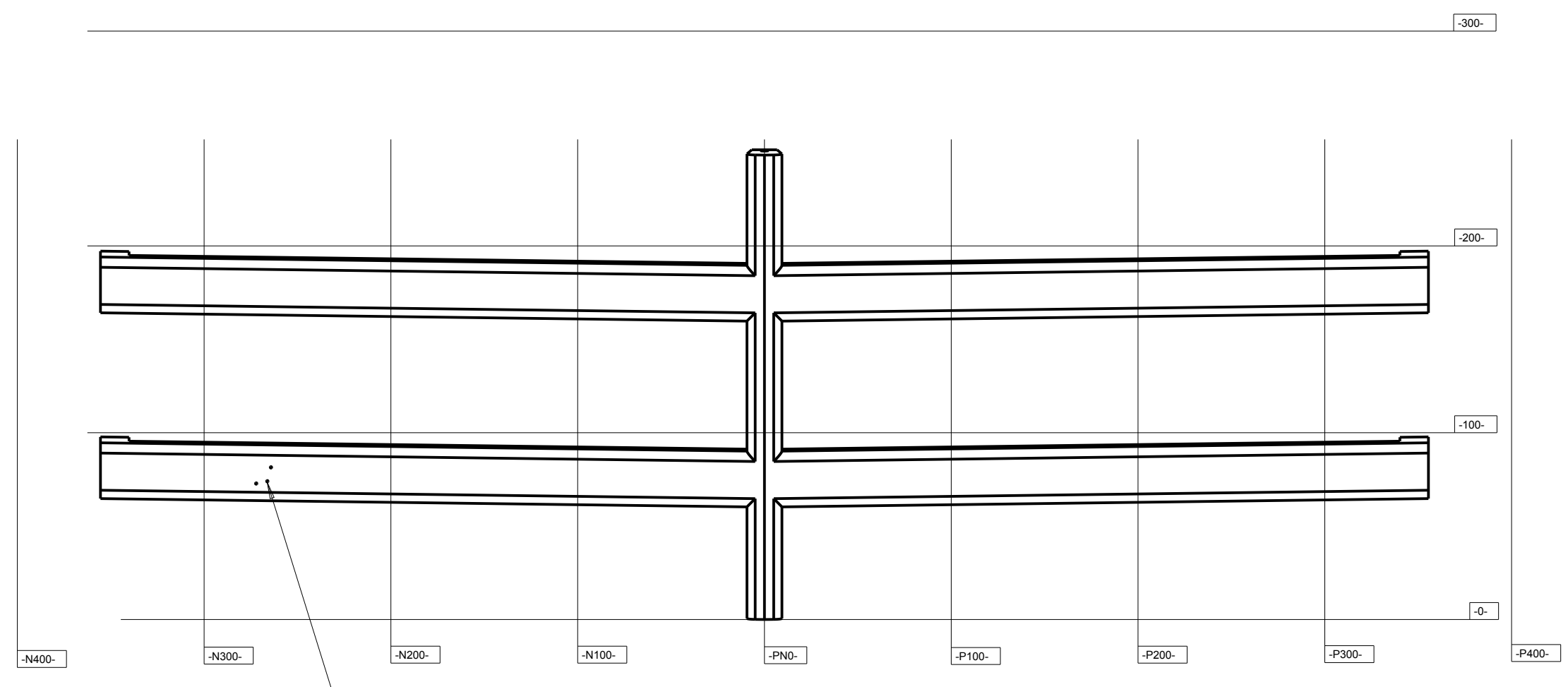
ASSEMBLY STEPS
 1: FIT BADGE ONTO FRONT GRILL USING GLUE TO ATTACH
 2: FIT FRONT GRILL ONTO INSIDE GRILL AND THREAD ALL 3mm BOLTS TO ASSEMBLE
 3: ATTACH FULL ASSEMBLY TO VEHICLE WITH ALL 5mm BOLTS



1 FRONT GRILL

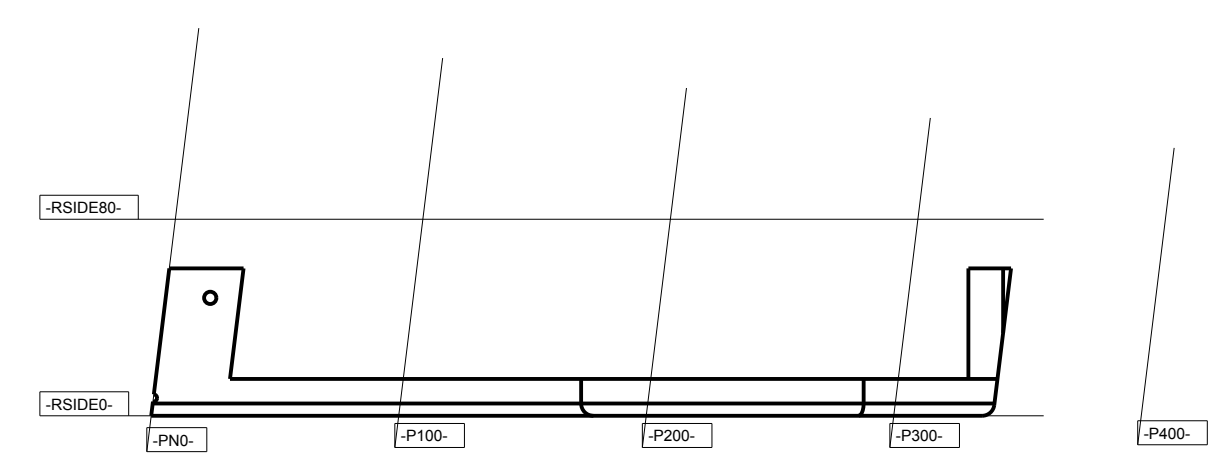
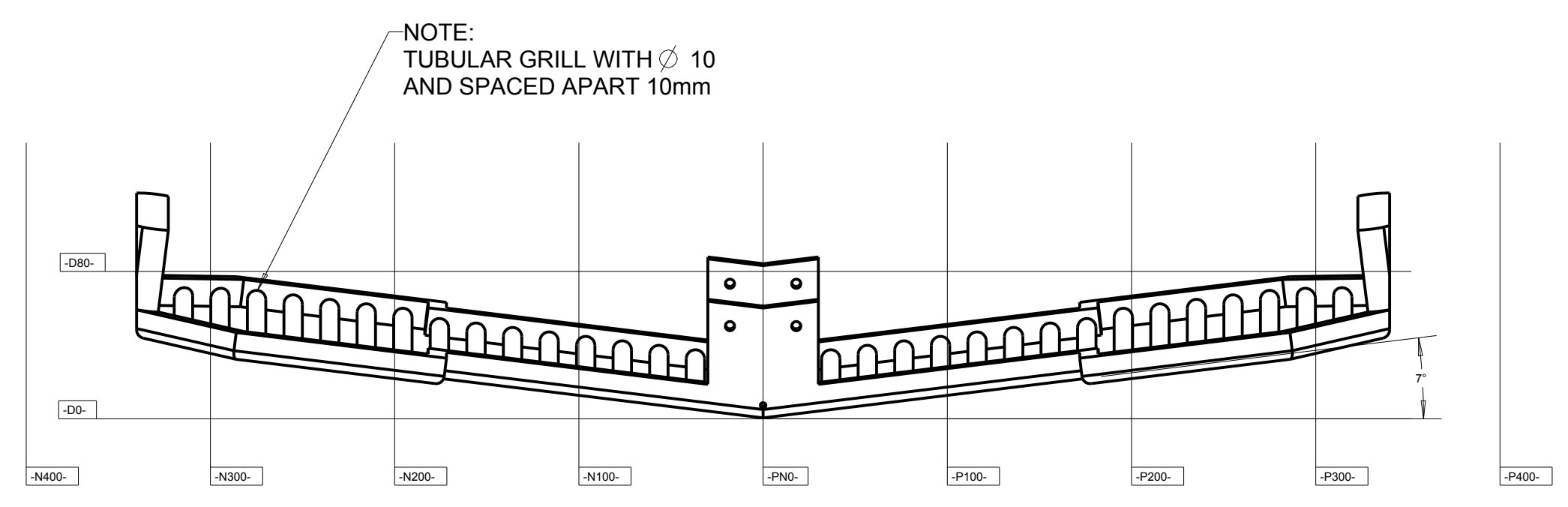


NOTE:
 EXTENDING ARMS ATTACH FRONT GRILLE TO THE INSIDE GRILLE

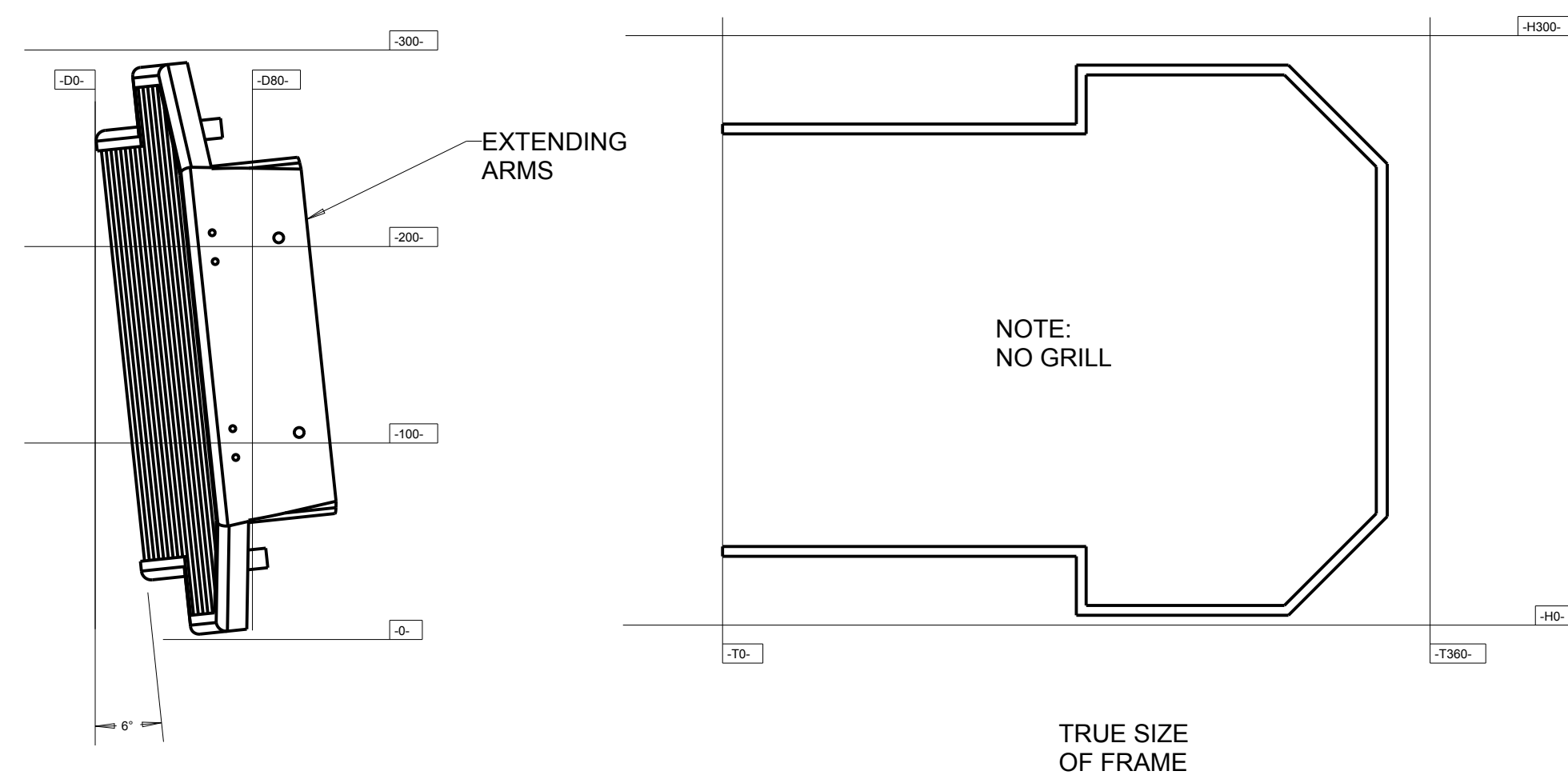
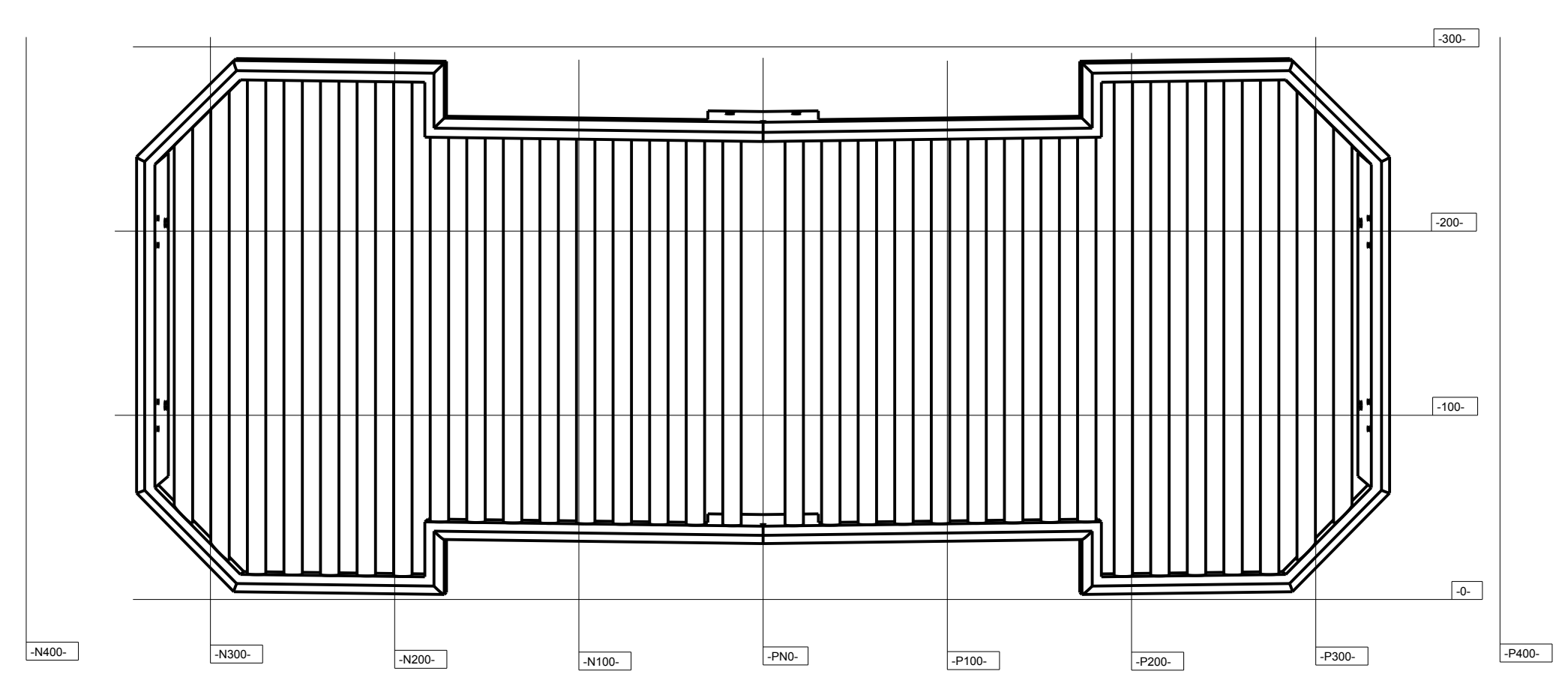


PART 3
 LOCATION HOLES

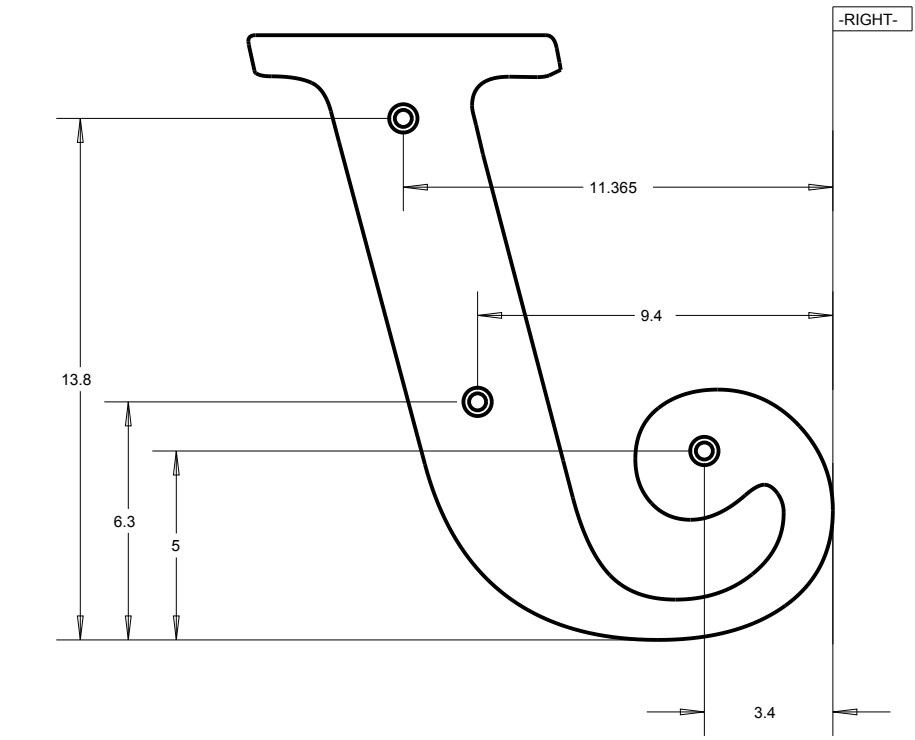
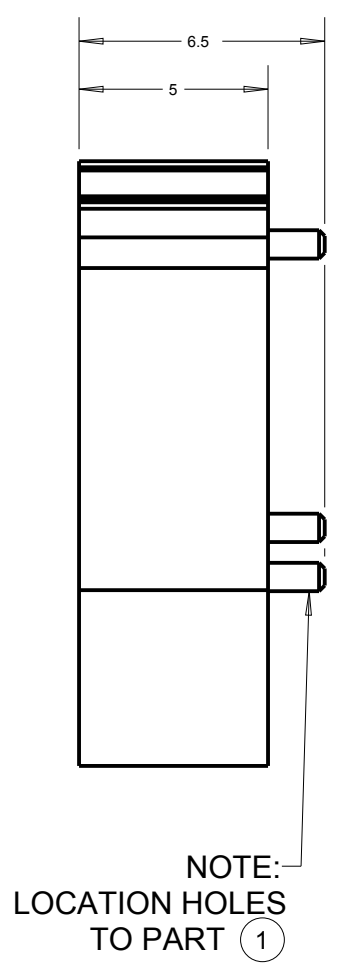
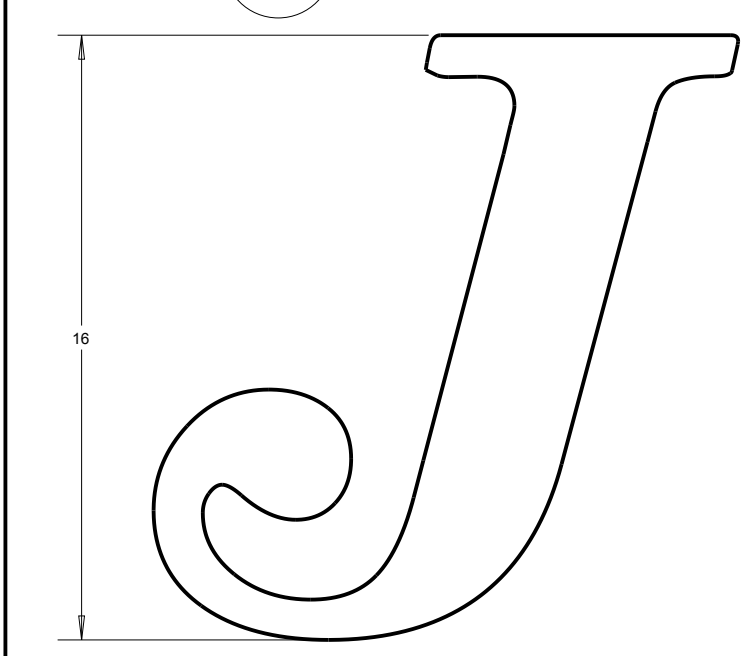
2 INSIDE GRILL



NOTE:
 EXTENDING ARMS ATTACH ASSEMBLY TO THE VEHICLE

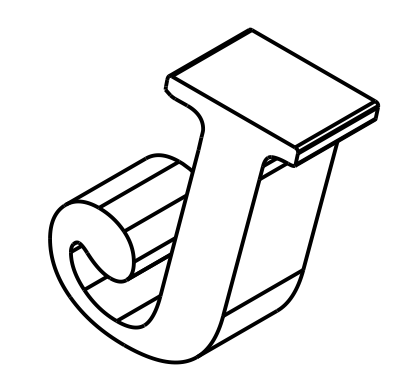


3 BADGE



NOTE:
 LOCATION HOLES TO PART 1

NOTE:
 CHAMFER: 45° X .150



DIMENSION TOLERANCE
 .x = ±.1
 .xx = ±.05
 .xxx = ±.005
 ANGLES = ±1°

BRIGHTON HIGH SCHOOL		
DRW: ASBE GRILL DESIGN		
NAME: JUSTIN NIEMI	DATE: 1/13/14	
SCALE: VARIES	PAGE: 1 OF 1	HOUR: 1