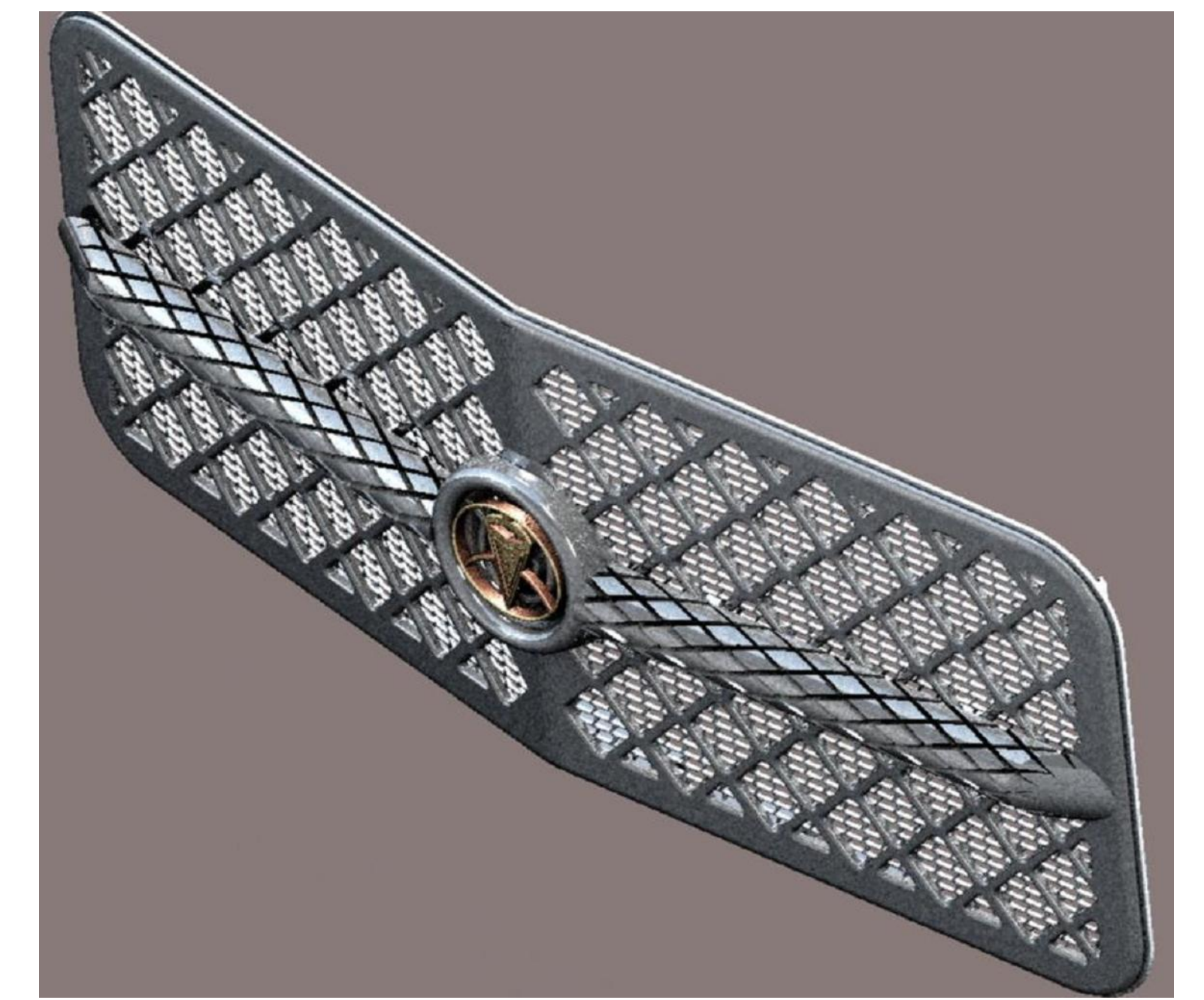
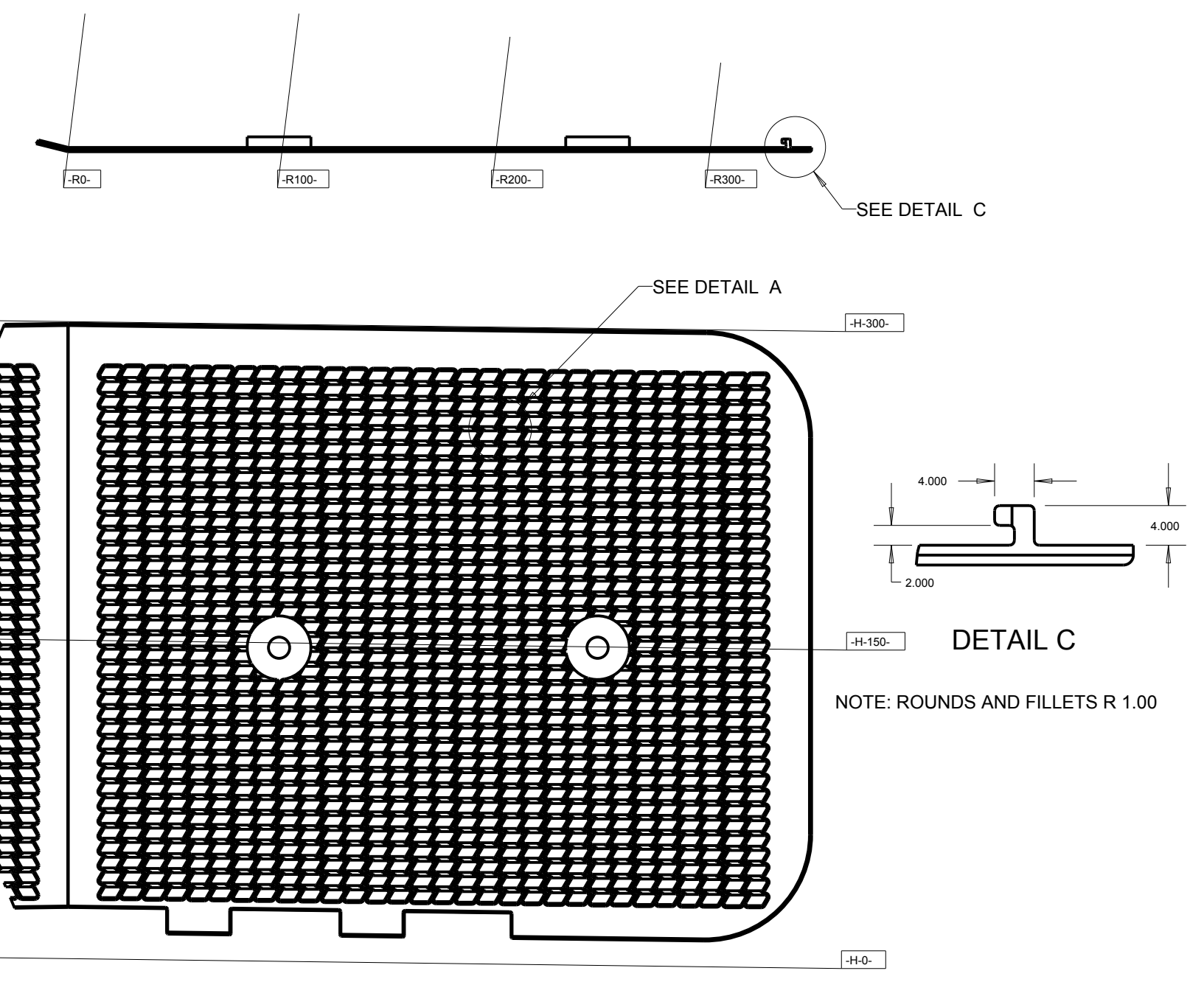
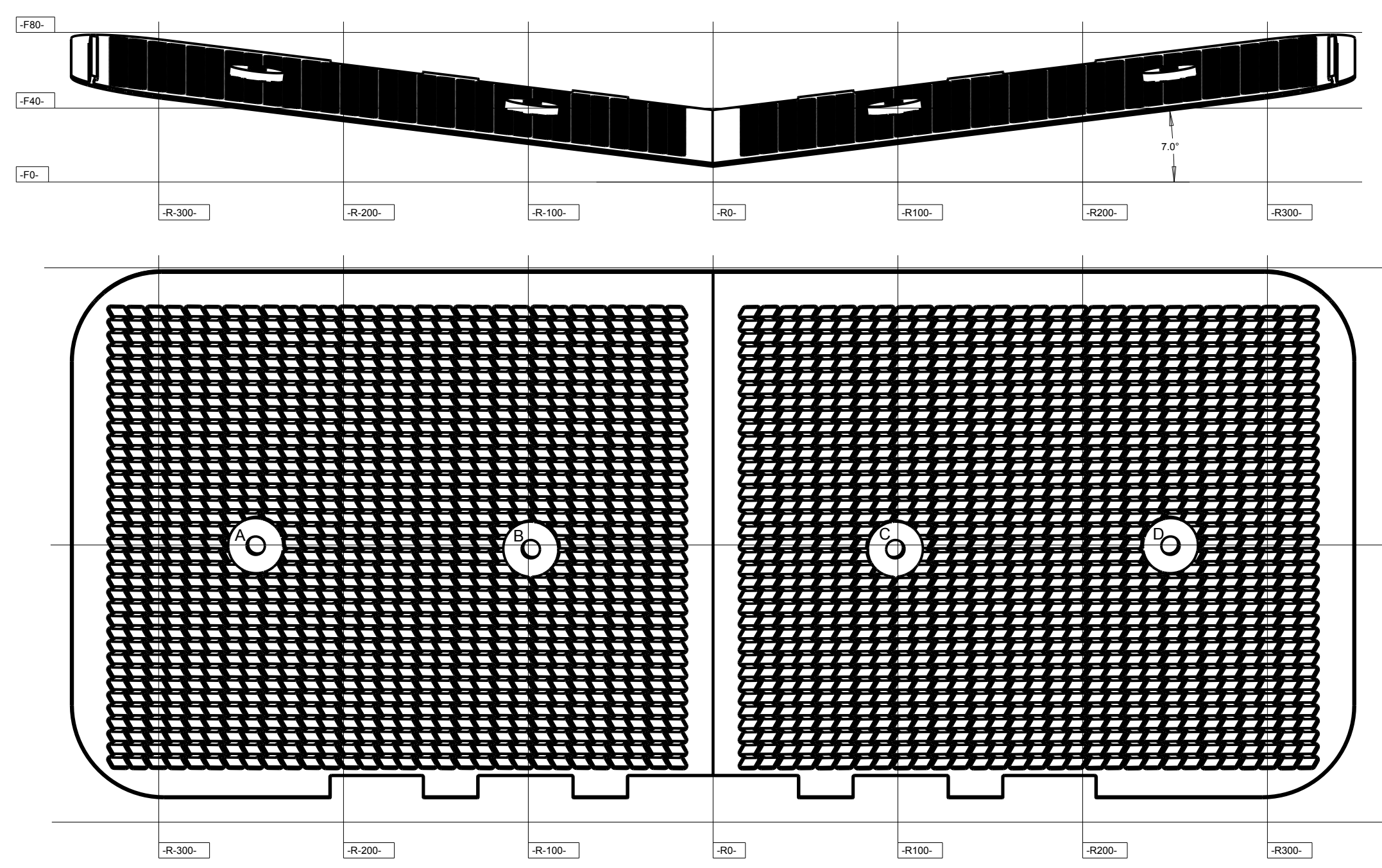


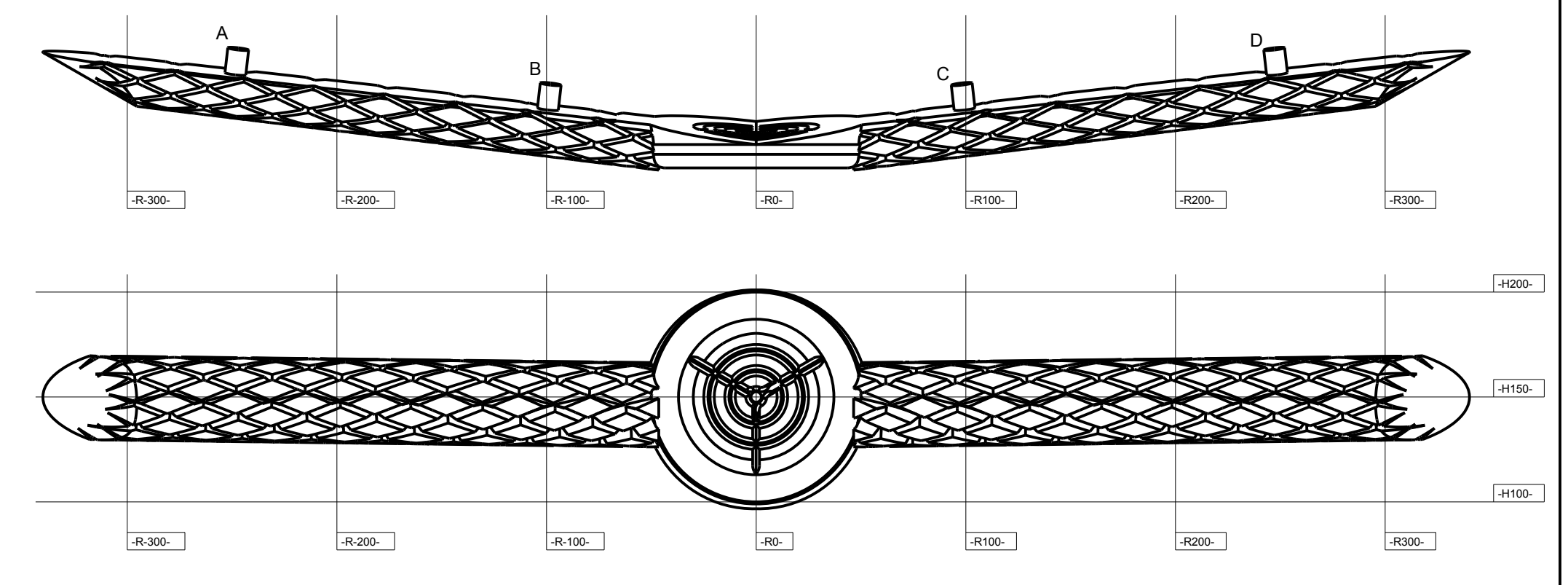
1 BACK GRILL

MATERIAL- BLACK POWDER COATED ALUMINUM
 ATTACHMENT: GLUED TO PINS FROM PART 3
 CONNECTS TO CAR WITH "C" BRACKETS ON SIDES
 FOR SIZE SEE DETAIL C



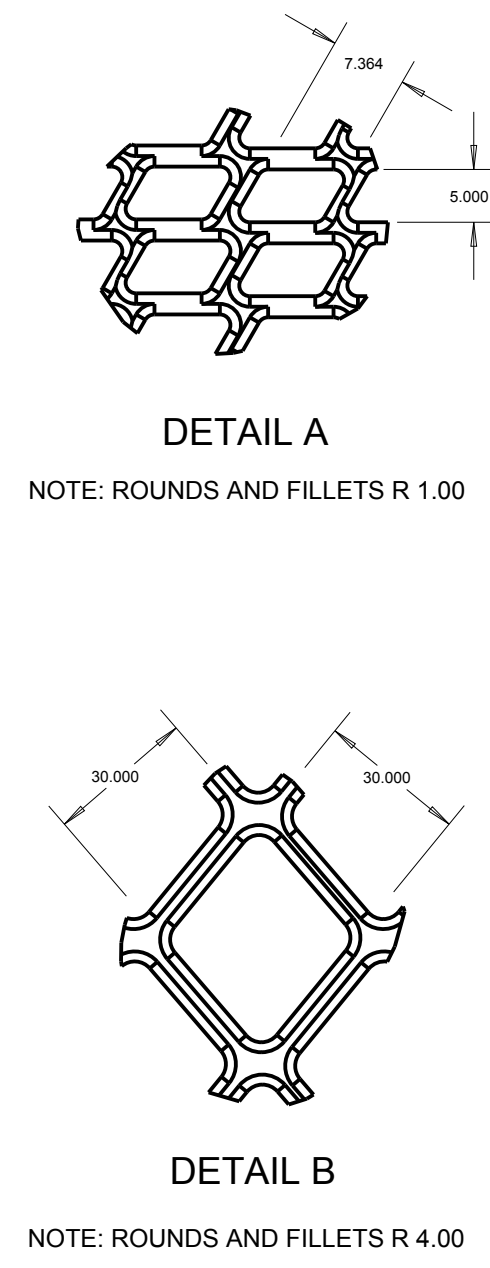
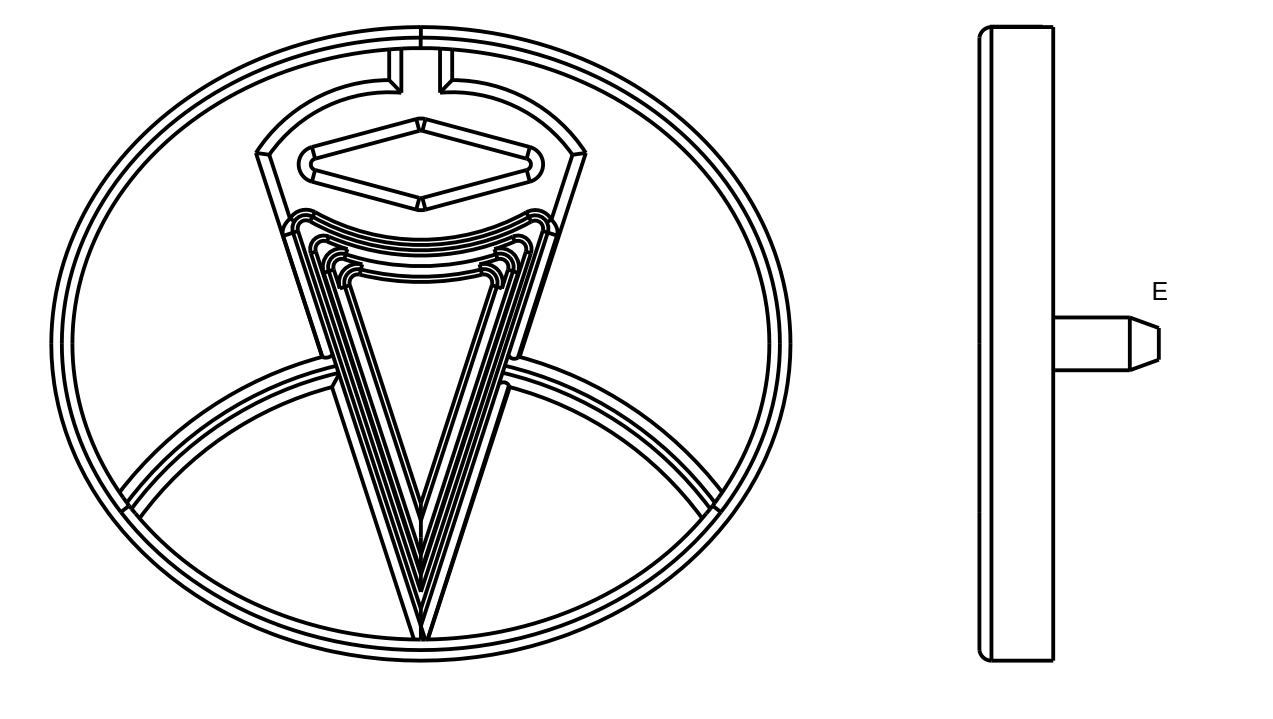
3 CROSSING BAR

MATERIAL: CHROME PLATED ABS PLASTIC
 ATTACHMENT: CONNECTED THRU PART 2 TO PART 1 USING PINS AND INDUSTRIAL GLUE



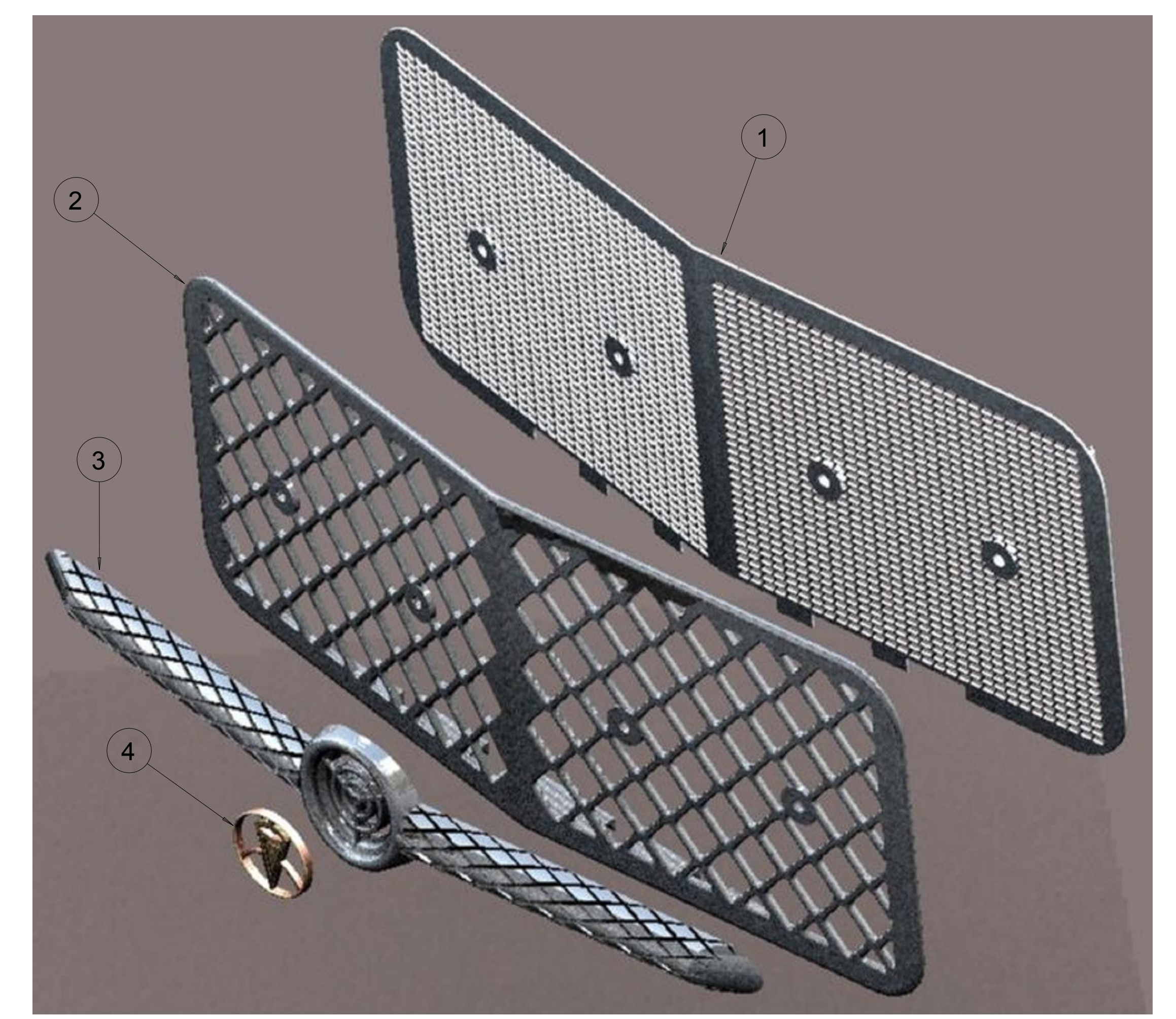
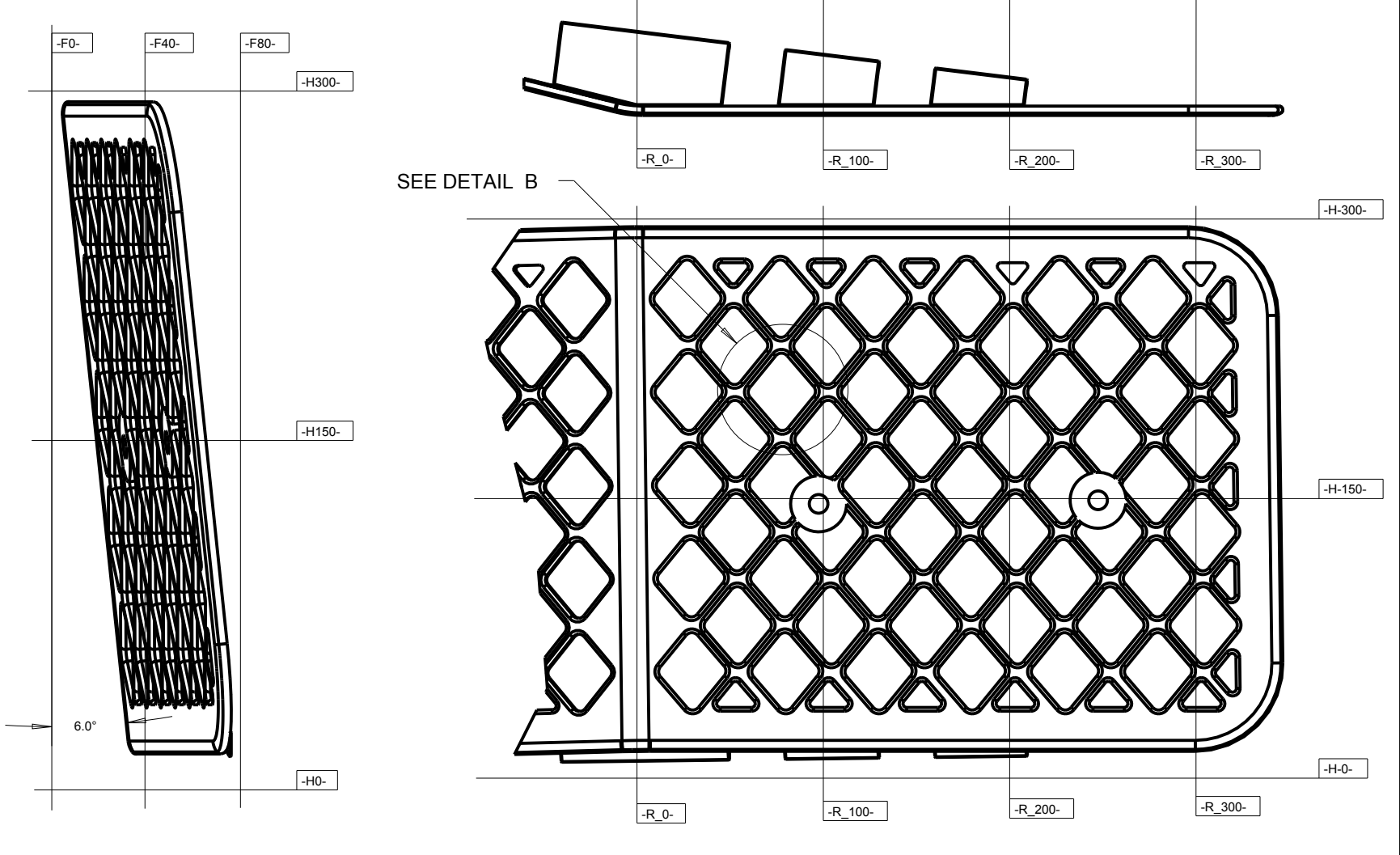
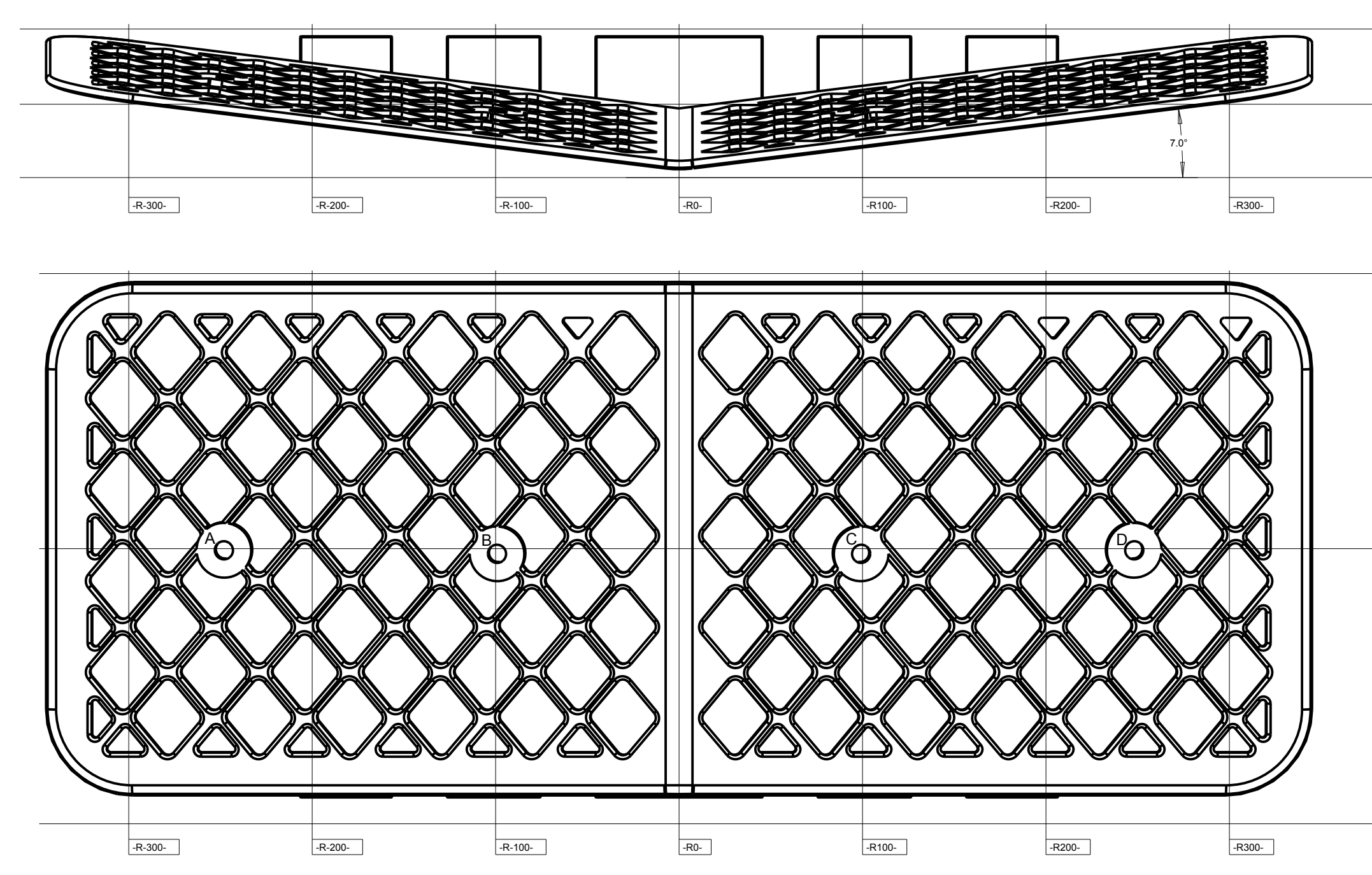
4 EMBLEM

MATERIAL: COPPER AND GOLD COLORED ABS PLASTIC
 ATTACHMENT: PIN E CENTERED ON PART 4 AND GLUED INTO PLACE AT CENTER OF PART 3



2 FRONT GRILL

MATERIAL: CHROME PLATED ABS PLASTIC
 ATTACHMENT: GLUED TO PINS A,B,C,D FROM PART 3
 ATACHES TO CAR WITH SNAP FITS ON BOTTOM



PART LIST		
PART NAME	PART #	QUANTITY
BACK GRILL	1	1
FRONT GRILL	2	1
CROSSING BAR	3	1
EMBLEM	4	1

DIMENSIONAL TOLERANCE	
X	± .1
XX	± .05
XXX	± .005
ANGLES	± 1°

BRIGHTON HIGH SCHOOL BRIGHTON, MI		
DWG: ASBE GRILL		
DWG BY: BRENDAN SCHULTZ		HR: 2
DATE: 2/3/14	SCALE: NONE	SH: 1-1