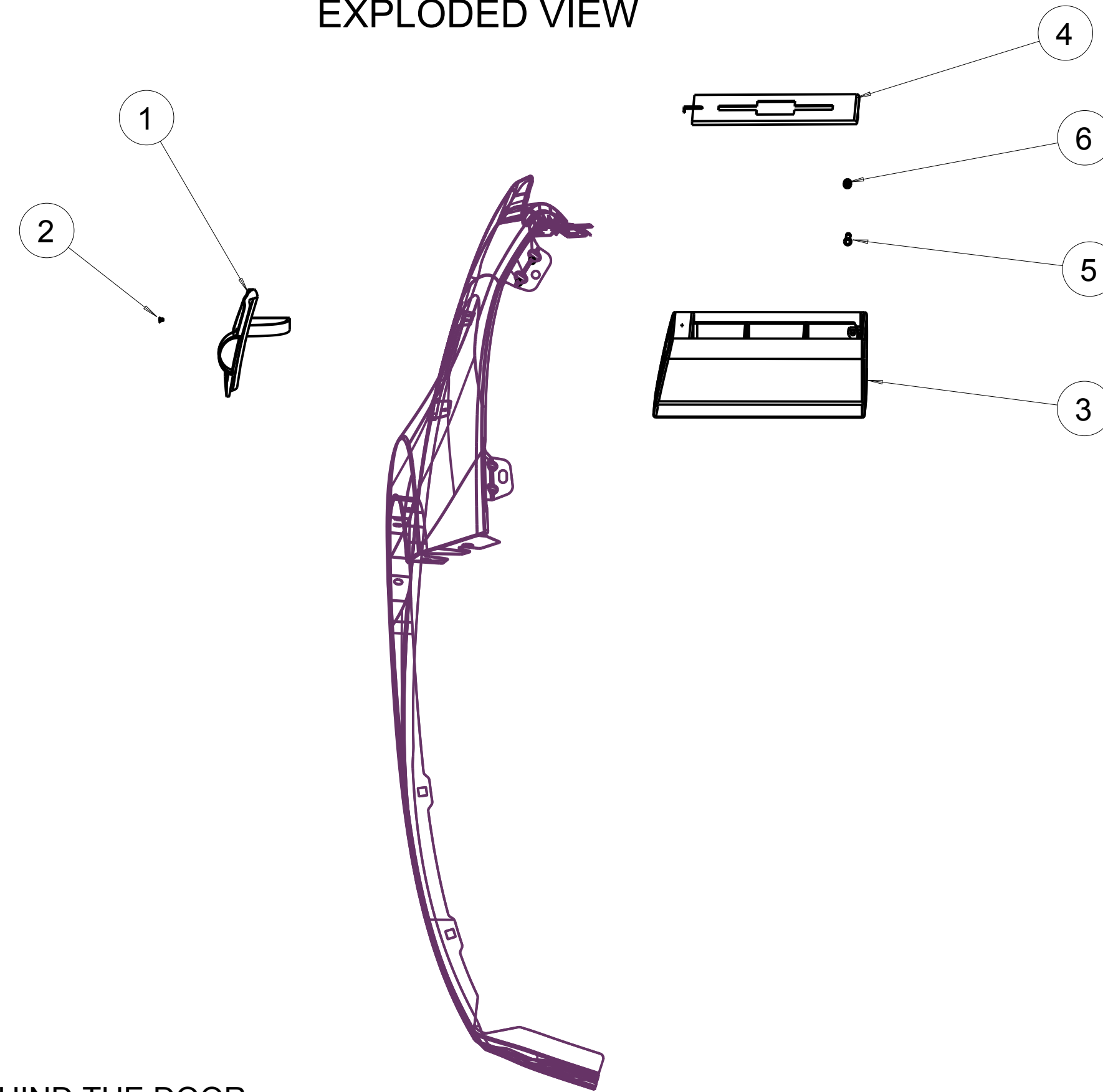


PARTS LIST		
PART #	PART NAME	QUANTITY
1	DOOR	1
2	DOOR SCREW	1
3	COMPARTMENT	1
4	LID	1
5	COMPARTMENT SCREW	1
6	SCREW CAP	1

# THE PORTABLE FIRST-AID KIT

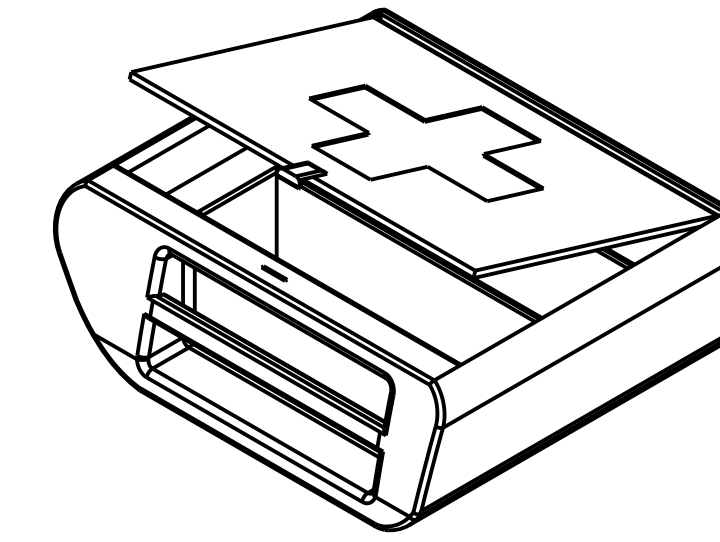


## EXPLODED VIEW

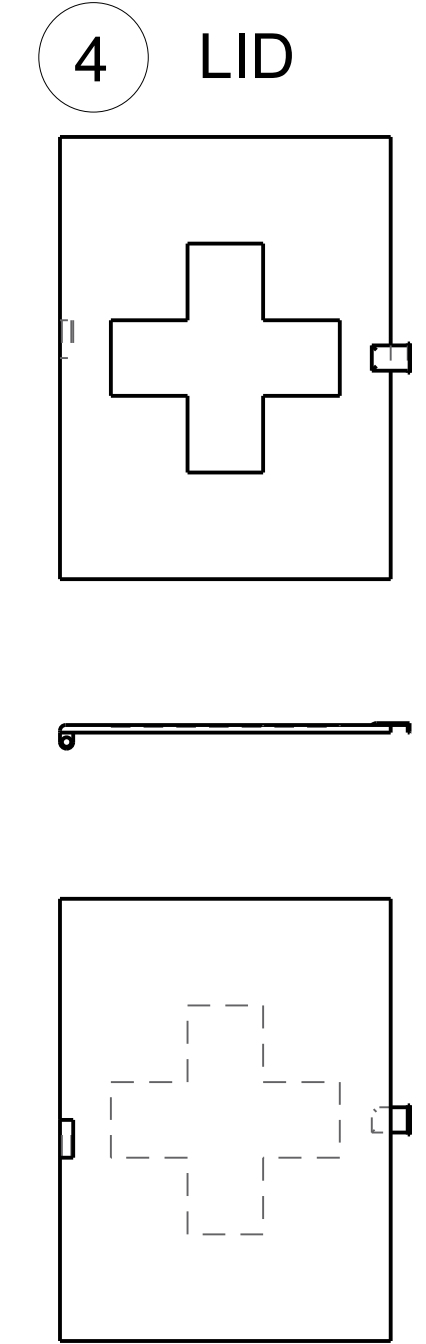


NOTE: THE FIRST-AID CONTAINER WILL SLIDE INTO THE EMPTY SPACE BEHIND THE DOOR.

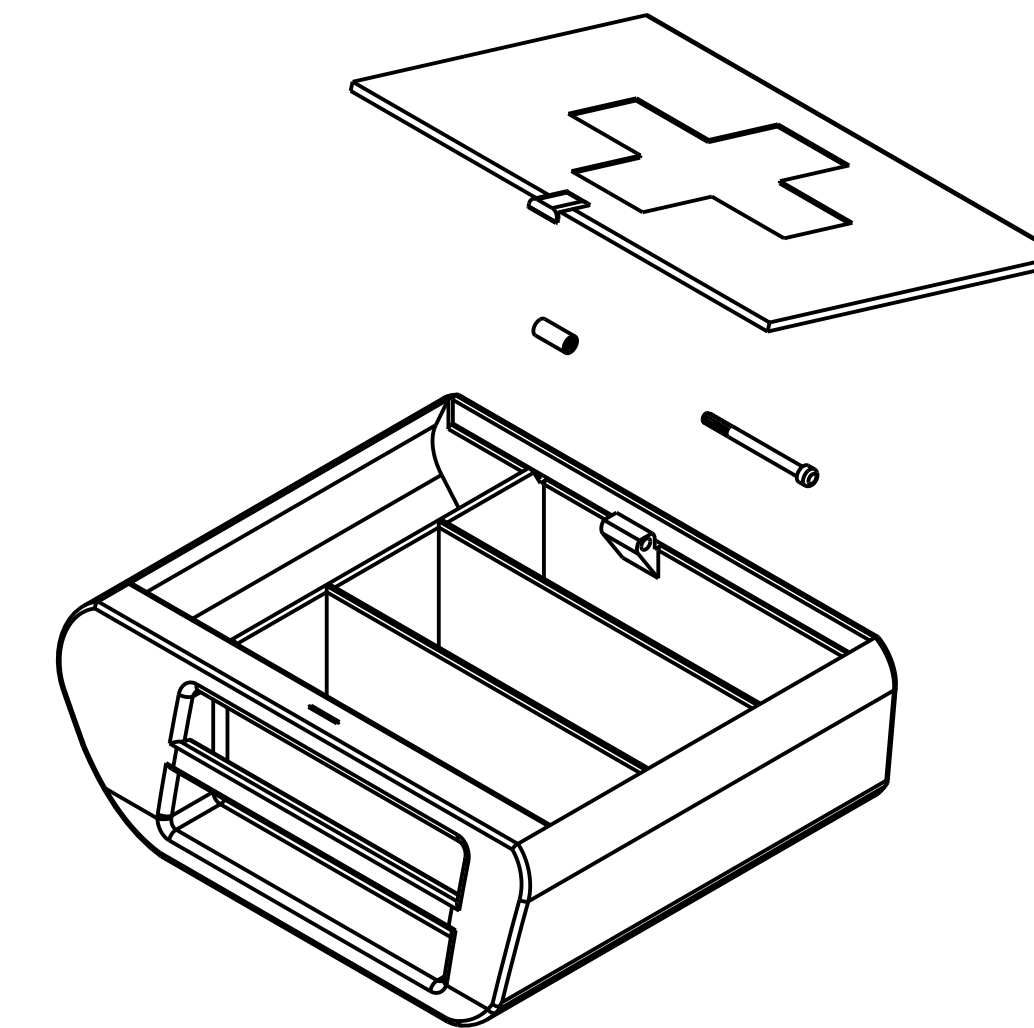
## COMPARTMENT ASSEMBLY



## ENGINEERING DESIGN METRIC

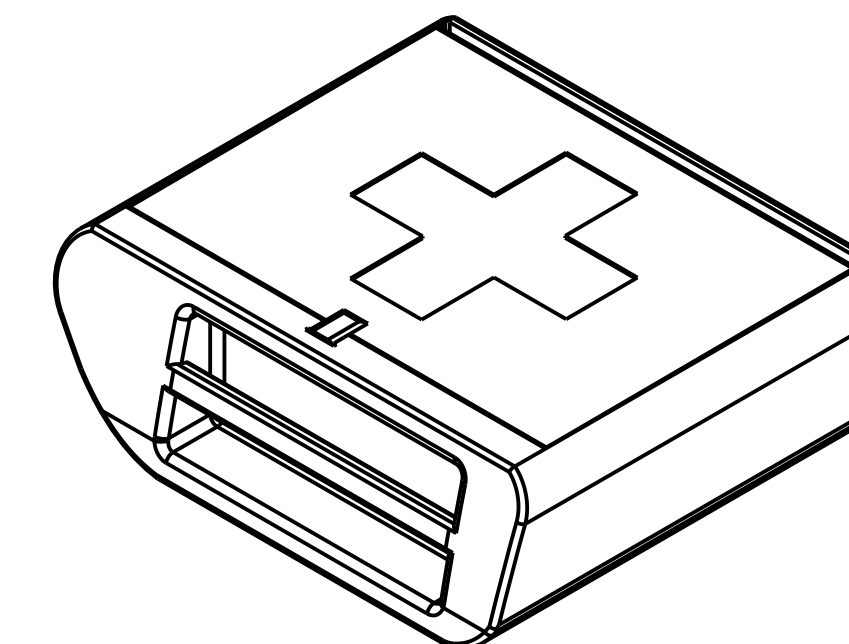


## COMPARTMENT EXPLODED VIEW



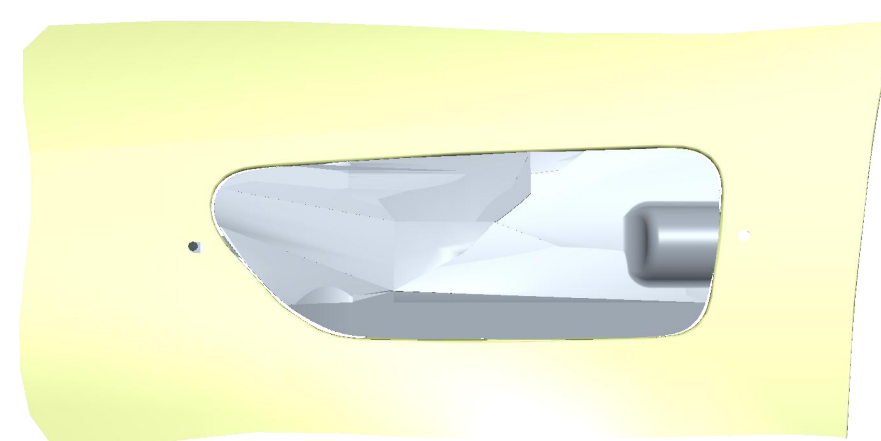
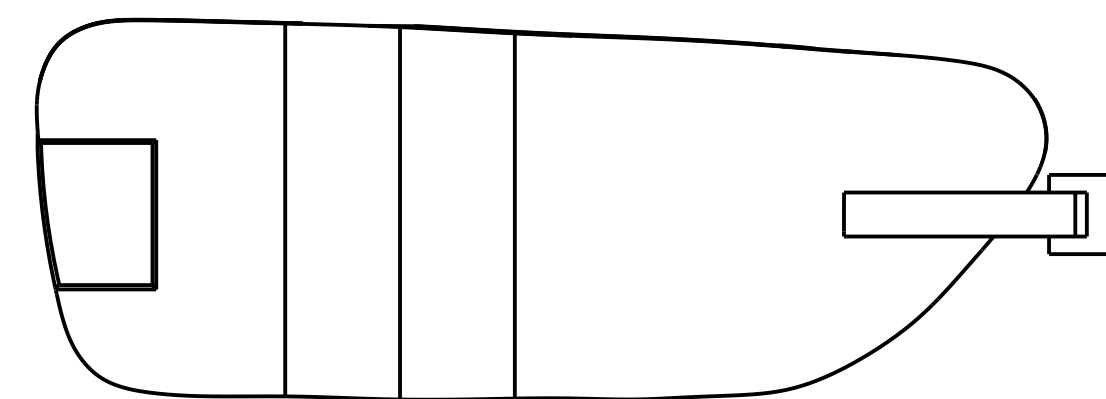
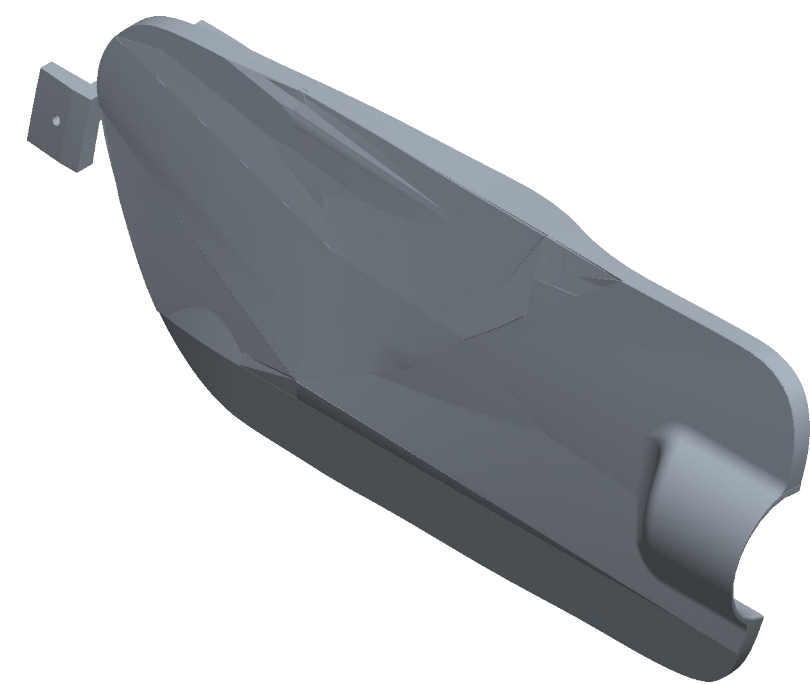
NOTE: THE HANDLE ALLOWS A PERSON TO PULL THE FIRST-AID KIT OUT OF THE CAR AND CARRY IT TO ANOTHER LOCATION. THE WALLS WITHIN THE COMPARTMENT SERVE AS DIVIDERS FOR THE VARIOUS TYPES OF MEDICAL SUPPLIES.

NOTE: THE COMPARTMENT SCREW SLIDES THROUGH THE OPENINGS IN THE COMPARTMENT AND LID. THE SCREW CAP TWISTS ONTO THE THREADED END KEEPING THE COMPARTMENT AND LID CONNECTED WHILE ALLOWING THE LID TO OPEN AND CLOSE.

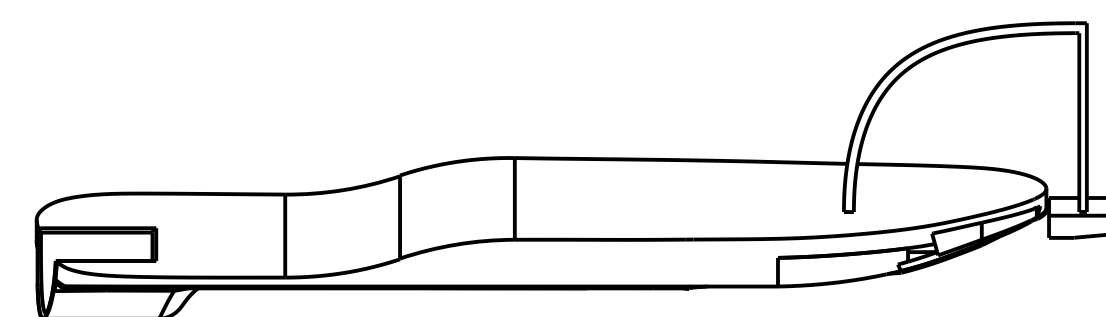


NOTE: THE LATCH ON THE LID FITS INTO THE GAP IN THE COMPARTMENT WITH A SNAP-FIT.

## 1 DOOR



NOTE: THE DOOR IS CONNECTED TO THE FENDER SURFACE BY THE DOOR SCREW THAT SCREWS INTO THE EXTRUSION CONNECTED TO THE DOOR. THE EXTRUSION IS MADE OF FLEXIBLE METAL.



DIMENSIONAL TOLERANCE	BRIGHTON HIGH SCHOOL BRIGHTON, MI	
.x = ± .1	DWGASBE COMPETITION PROJECT	
.xx = ± .05	DWG BY: EMILY KWAPIS	HR: 5
.xxx = ± .005	DATE: 1/16	SCALE: VARIES
ANGLES = ± 1°		SH: 1-1