

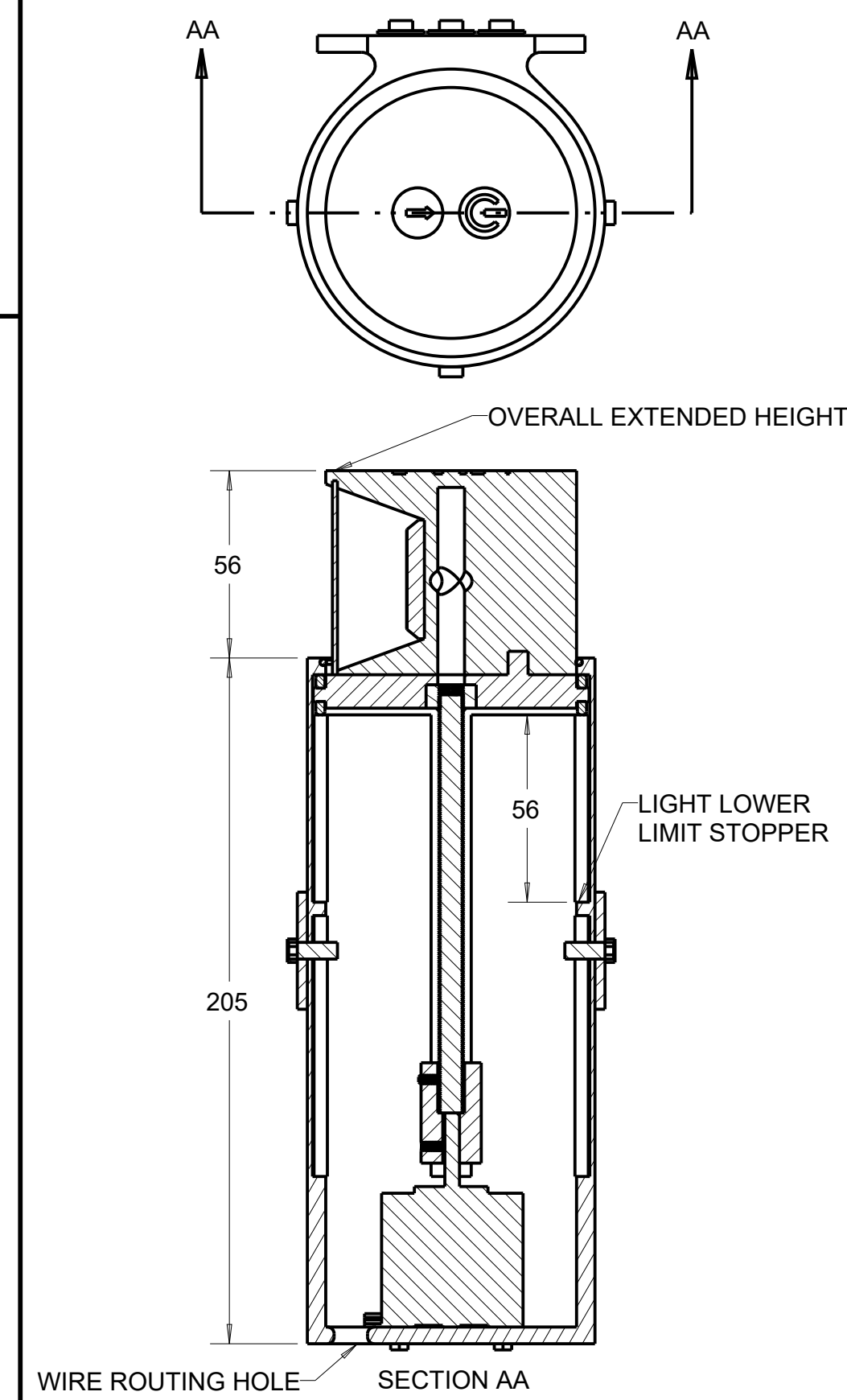
**DESCRIPTION:**

LIGHTING SYSTEM IS DESIGNED TO BE USED IN CONJUNCTION WITH A TRUCKS STANDARD LED BED LIGHTING. THE LIGHT RAISES OUT OF THE TRUCK BODY WITH THE PUSH OF A BUTTON IN THE CAB OR ON THE TOP OF THE LIGHT. WHEN THE LIGHT RAISES IT WILL SHINE OVER THE CONTINENTS OF THE BED SO EVEN IF THE BED IS FULL LIGHT WILL STILL ILLUMINATE THE BED. WHEN THE LIGHT IS IN THE EXTENDED POSITION IT CAN ALSO BE ROTATED UP TO 360 DEGREES TO FACE OUT THE BACK OF THE TRUCK TO LIGHT A WORK AREA OR HELP LIGHT THE PATH TO THE BACK OF THE TRUCK.

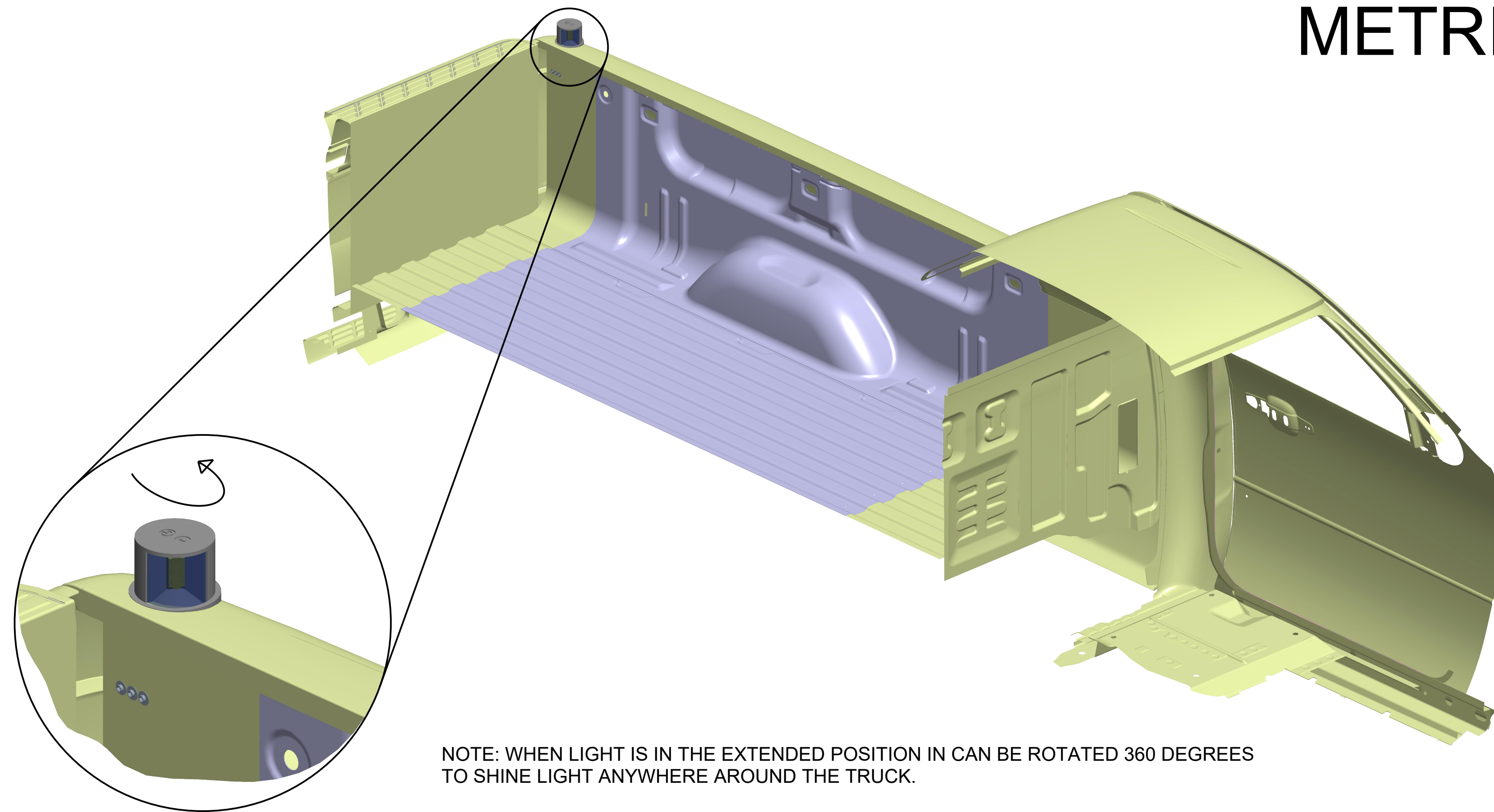
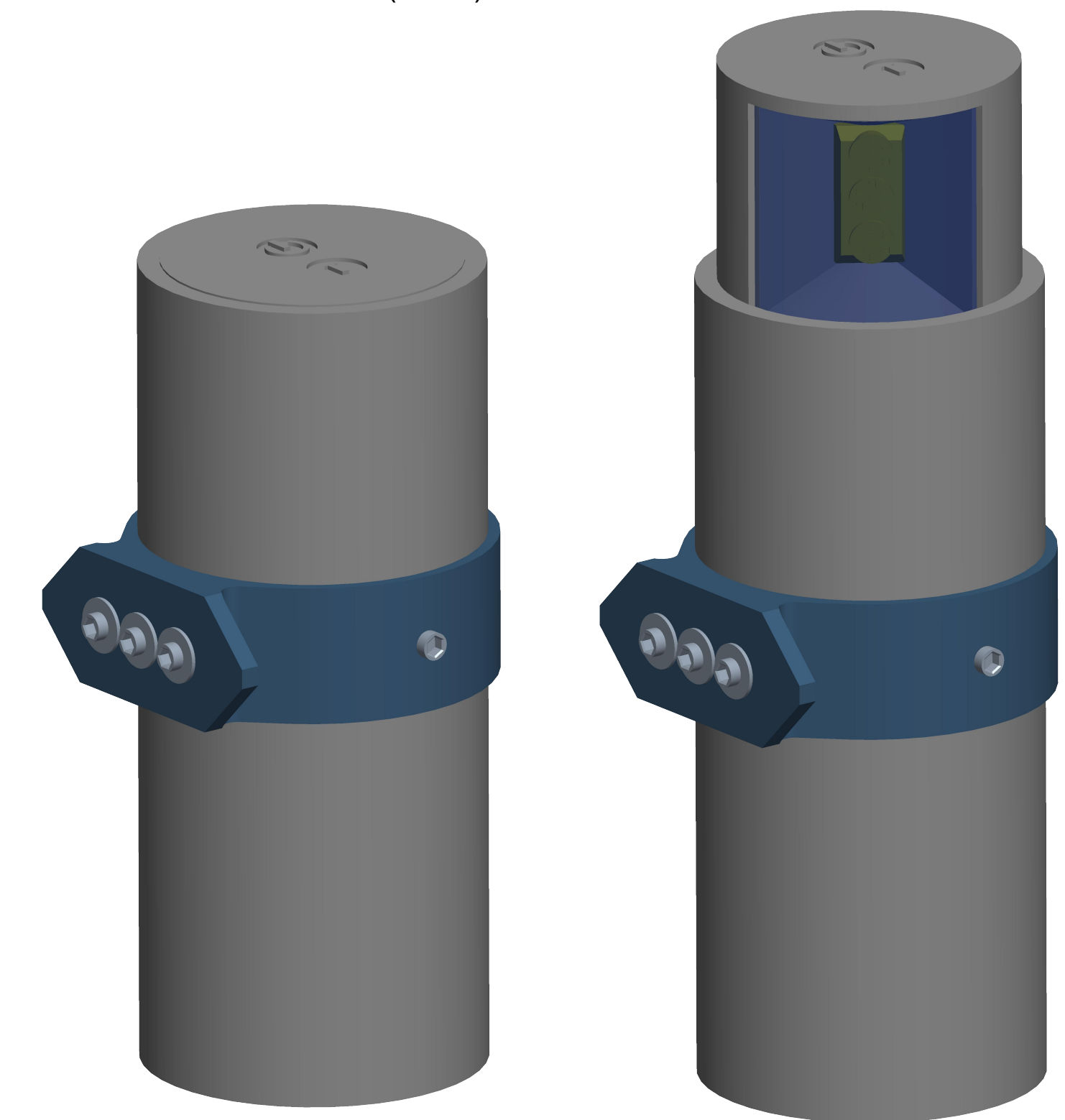
**ASSEMBLY INSTRUCTIONS:**

STEP 1: CONNECT PART #3 STEPPER TO PART #5 M8 THREAD ROD WITH PART #4 COUPLER. THREAD TWO PART #12 M3 SET SCREW INTO THE COUPLER TO LOCK THE PIECES TOGETHER.  
 STEP 2: SET THE ASSEMBLY OF PART # 3, 4, 5, 12 INTO PART #2 HOUSING TUBE AND LINE UP THE SCREW HOLES ON THE BOTTOM OF PART #3 STEPPER TO THE HOLES ON THE BOTTOM PART #2 STEPPER. SCREW IN 4 PART #16 M3 BOLTS TO CONNECT THE PART #2 BODY TUBE TO THE PART #3 STEPPER  
 STEP 3: INSERT PART #13 GASKET INTO THE GASKET GROOVE ON THE TOP OF PART #2 HOUSING TUBE  
 STEP 4: APPLY ADHESIVE TO ONE SIDE OF PART #6 M8 NUT AND INSERT IT INTO THE HOLE ON THE BOTTOM OF PART # 7 LIGHT MOUNT BASE. LET ADHESIVE CURE.  
 STEP 5: PRESS FIT 4 PART #11 SLIDER WHEELS ON TO THE PIN ON PART #7 LIGHT MOUNT BASE. MAKE SURE WHEELS SPIN FREELY  
 STEP 6: INSTALL PART #9 LED LIGHTS INTO PART # 8 LIGHT HOUSING WITH DOUBLE SIDED TAPE. ROUTE WIRING THROUGH HOLE  
 STEP 7: APPLY SILICONE SEALANT INTO THE GLASS PANE GROOVE ON PART # 8 LIGHT HOUSING. INSERT PART #10 CLEAR PLASTIC LENS INTO THE INTO THE GLASS PANE GROOVE ON PART # 8 LIGHT HOUSING FROM UNDERNEATH.  
 STEP 8: APPLY ADHESIVE TO THE SURFACE WITH PINS OF PART#7 LIGHT MOUNT BASE. INSERT PINS INTO BOTTOM OF PART #8 LIGHT HOUSING AND LET ADHESIVE DRY  
 STEP 9: RUN WIRES OUT OF BOTTOM OF PART #2 BODY TUBE  
 STEP 10: TAKE THE UPPER LIGHT ASSEMBLY AND SLIDE IT INTO THE LOWER TUBE ASSEMBLY MAKING SURE THE WHEELS LINE UP WITH THE CHANNELS. THREADED THE THREADED ROD INTO THE NUT ON THE BOTTOM OF THE LIGHT ASSEMBLY  
 STEP 11: TAKE PART #1 AND SLIDE IT ON TO PART #2 HOUSING TUBE. LINE UP THE HOLES OF THE TWO PARTS AND SCREW THEM TOGETHER WITH PART #15 M5 BOLT  
 STEP 12: SLIDE PART #14 WASHERS ON TO 3 PART #15 M5 BOLTS. DROP ASSEMBLY INTO THE HOLE ON THE BODY. LINE UP THE PRE DRILLED HOLES ON THE INSIDE OF THE TRUCK BED WITH THE 3 HOLES ON PART #1. SCREW THE PART #14 / #15 ASSEMBLY THROUGH THE PRE DRILLED HOLES INTO PART #1. TIGHTEN TO 8NM AND CHECK THAT THERE IS NO PLAY IN THE ASSEMBLY

**ASSEMBLED SECTION**



NOTE: ASSEMBLY IN EXTENDED STATE(RIGHT) AND DEPRESSED STATE(LEFT)



NOTE: WHEN LIGHT IS IN THE EXTENDED POSITION IN CAN BE ROTATED 360 DEGREES TO SHINE LIGHT ANYWHERE AROUND THE TRUCK.

**METRIC**

**B.O.M CHART**

PART NAME	PART #	QUANTITY
MOUNTING CLAMP	1	1
HOUSING TUBE	2	1
STEPPER MOTOR	3	1
M5 TO M8 COUPLER	4	1
M8 THREADED ROD	5	1
M8 NUT	6	1
LIGHT MOUNT BASE	7	1
LIGHT HOUSING	8	1
LED LIGHT	9	1
CLEAR PLASTIC LENS	10	1
SLIDER WHEELS	11	4
M3 SET SCREW	12	2
GASKET	13	1
M5 WASHER	14	3
M5 BOLT	15	6
M3 BOLT	16	4

STUDENT NAME:

KADE WIRTH

SCHOOL:

BRIGHTON HIGHSCHOOL

GRADE LEVEL: CATEGORY:

12 ENGINEERING DESIGN

EMAIL ADDRESS:

WIRTHKW19@BRIGHTONK12.COM

TEACHER NAME:

MATT JOURDEN