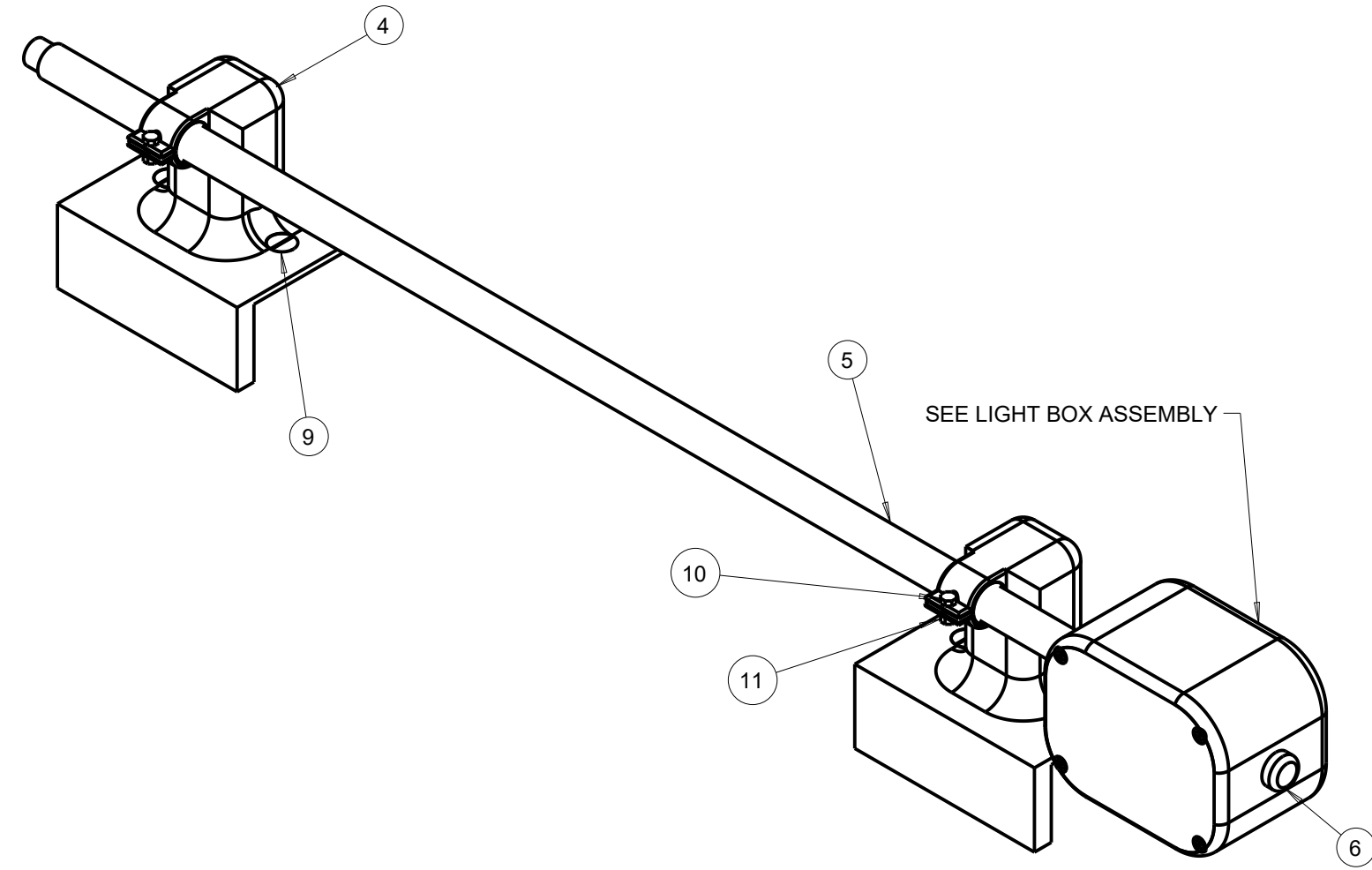


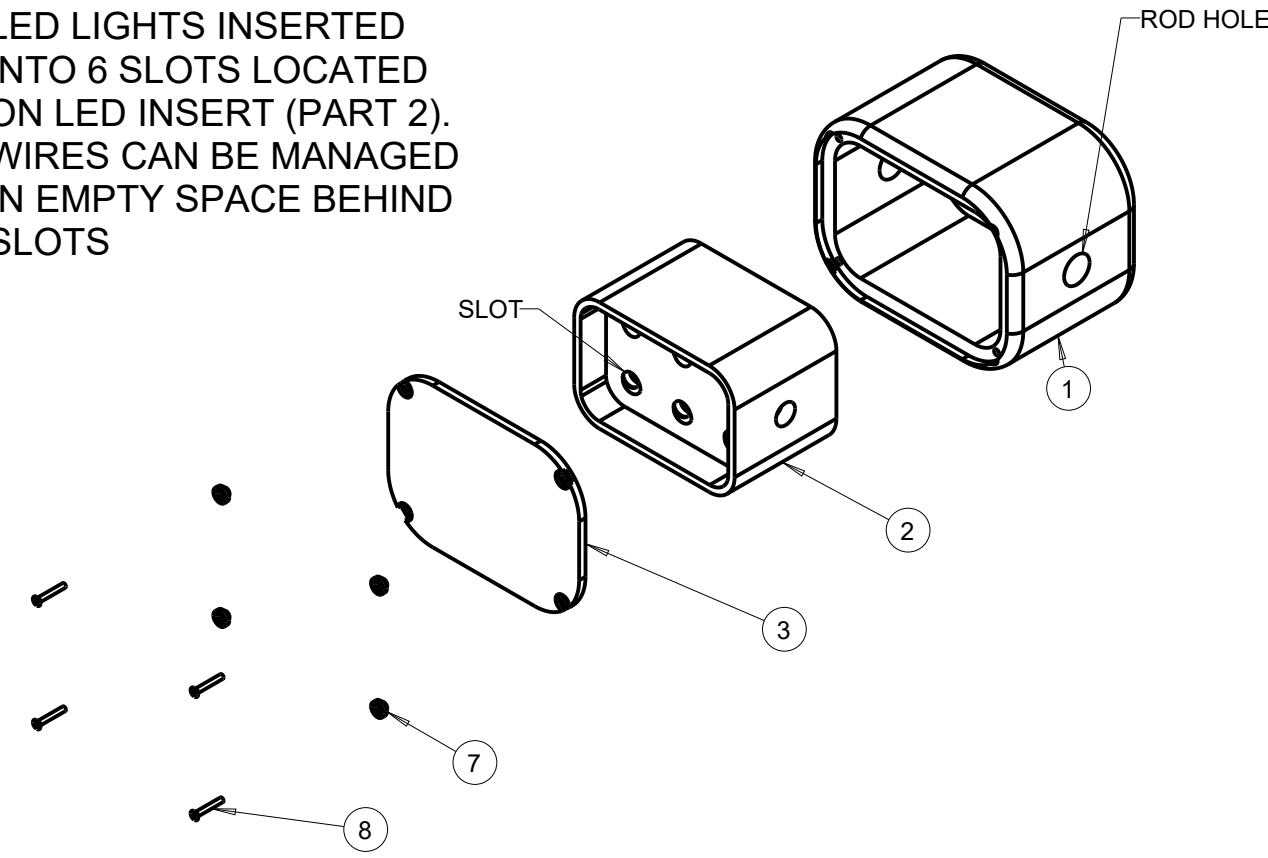
PARTIALLY ASSEMBLED VIEW



LIGHT BOX ASSEMBLY

NOTE:

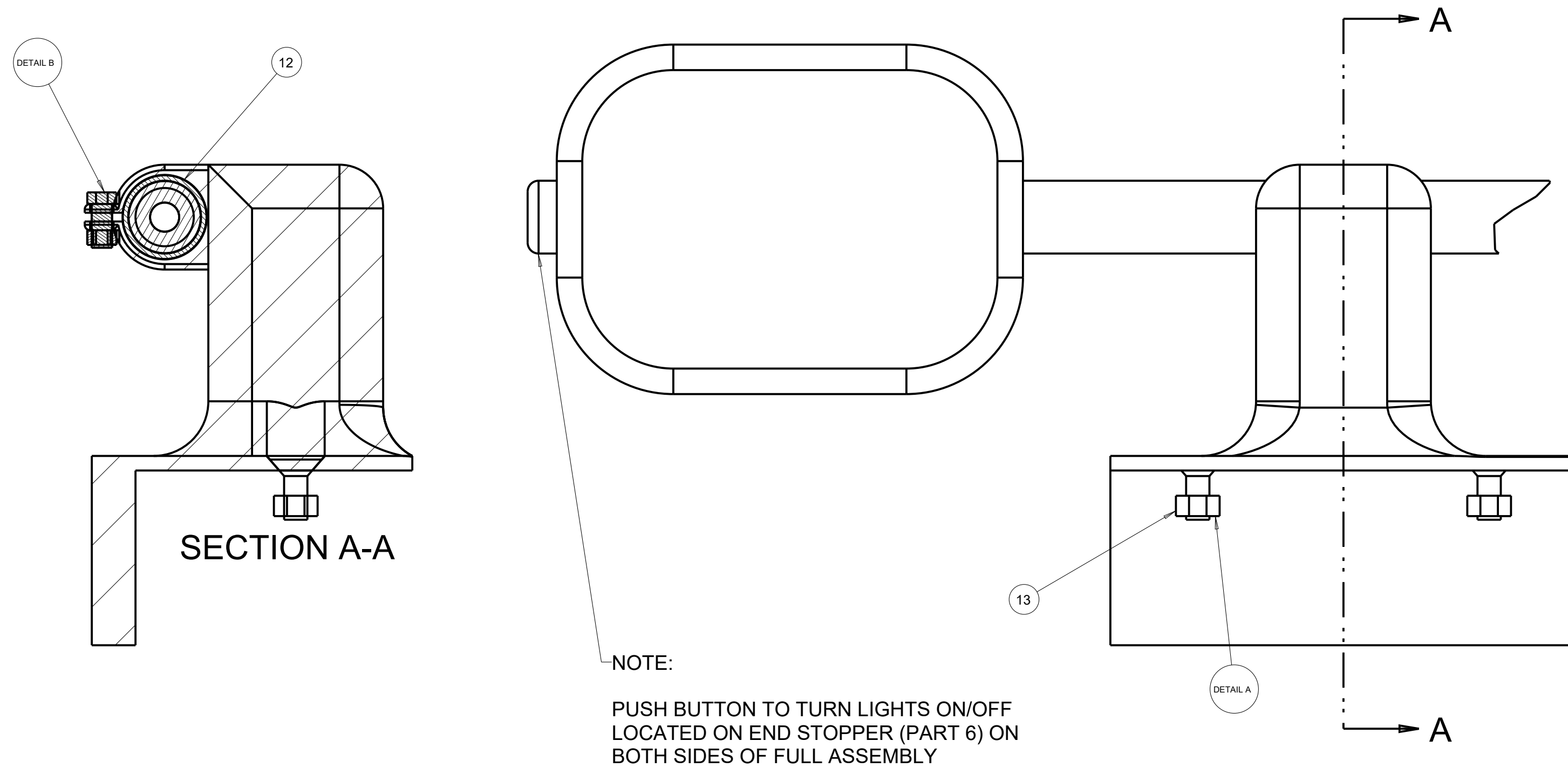
LED LIGHTS INSERTED INTO 6 SLOTS LOCATED ON LED INSERT (PART 2). WIRES CAN BE MANAGED IN EMPTY SPACE BEHIND SLOTS



BED MOUNT AND ROD SECTION VIEW

NOTE:

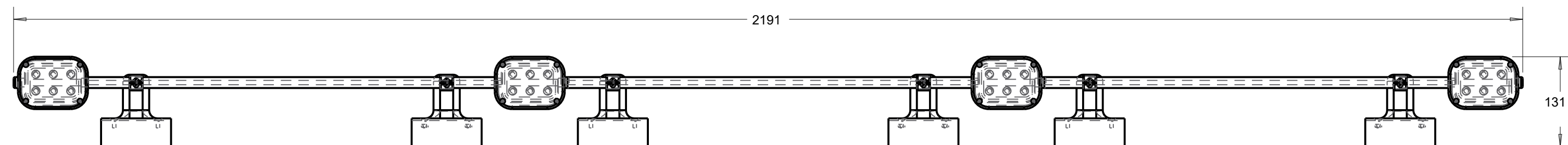
GASKET (PART 12) PROVIDES FRICTION TO HOLD RODS IN PLACE IN ADDITION TO REDUCING WEAR OVER TIME.



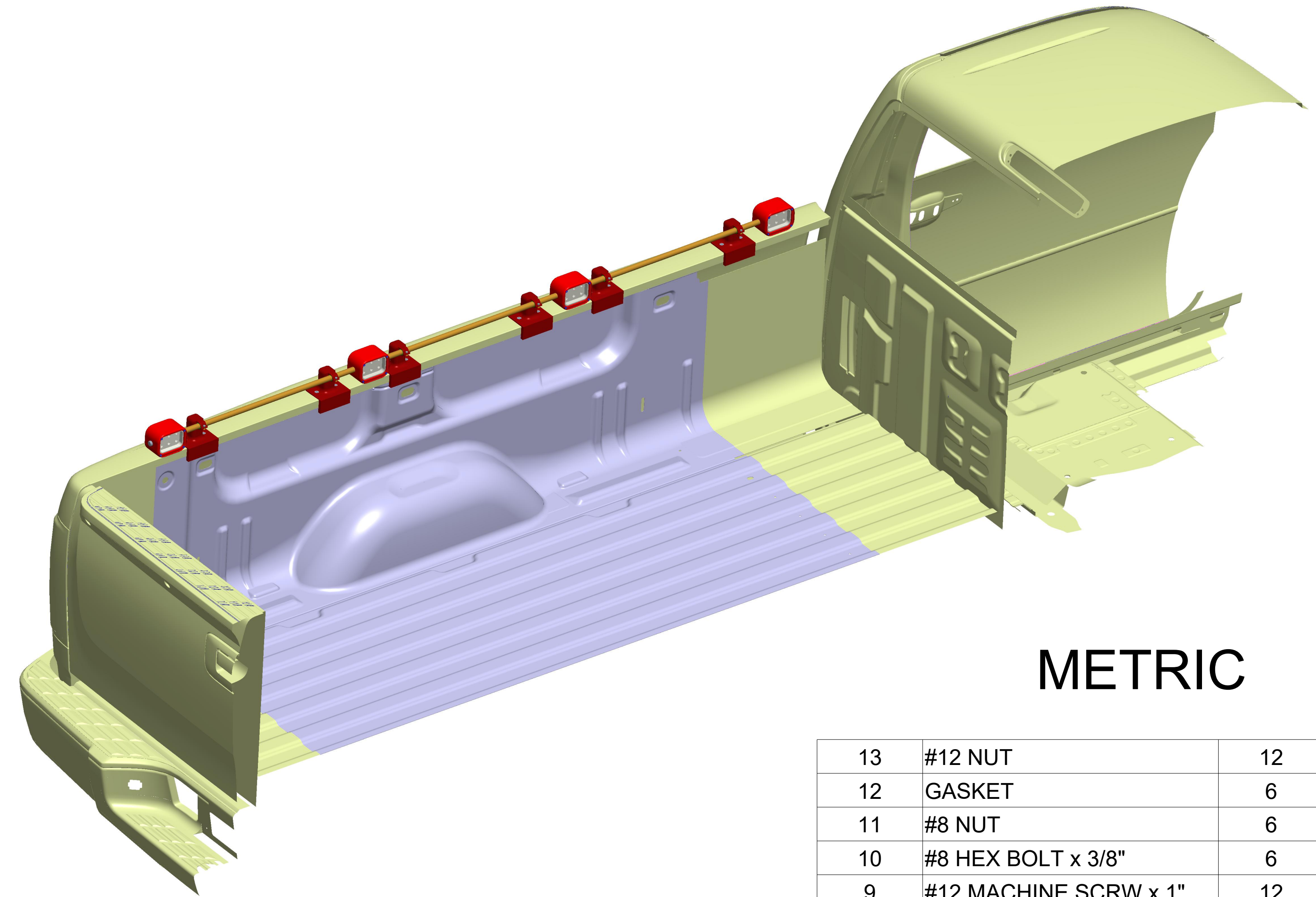
NOTE:

PUSH BUTTON TO TURN LIGHTS ON/OFF LOCATED ON END STOPPER (PART 6) ON BOTH SIDES OF FULL ASSEMBLY

OVERALL DIMENSIONS



FULL ASSEMBLY



METRIC

13	#12 NUT	12
12	GASKET	6
11	#8 NUT	6
10	#8 HEX BOLT x 3/8"	6
9	#12 MACHINE SCRW x 1"	12
8	#1 MACHINE SCRW x 1/2"	16
7	SCREW RESTS	16
6	END STOPPER	2
5	ROD	3
4	BED MOUNT	6
3	GLASS PANE	4
2	LED INSERT	4
1	LIGHT BOX HOUSING	4
PART #	PART NAME	QTY

PARTS LIST

STUDENT NAME:

HENRY SUMMERS
SCHOOL:

BRIGHTON HIGH SCHOOL
GRADE LEVEL: CATEGORY:

12 ENGINEERING DESIGN

EMAIL ADDRESS:

SUMMERSHD19@BRIGHTONK12.COM
TEACHER NAME:

MATTHEW JOURDEN

ASSEMBLY INSTRUCTIONS:

1. PLACE BED MOUNTS IN DESIRED LOCATIONS ON TOP OF TRUCK BED. SECURE BED MOUNTS USING PART #9 SCREW AND TIGHTEN WITH PART #13 NUT (SEE BED MOUNT AND ROD SECTION VIEW DETAIL A)
2. ASSEMBLE LIGHT BOX (SEE LIGHT BOX ASSEMBLY)
3. GASKETS AND ROD SLIDE INTO CLAMP HOLE (SEE BED MOUNT AND ROD SECTION VIEW DETAIL B). NOTE: GASKETS ARE USED TO PROVIDE FRICTION AND PREVENT THE LIGHT BOX FROM SLIPPING FROM DESIRED POSITION
4. PLACE LIGHT BOXES AT DESIRED LOCATION AND ANGLE. TIGHTEN SCREW PART #10 TO FIX LIGHT BOX IN POSITION. NOTE: LIGHT BOXES MAY BE ANGLED TO THE OUTSIDE OF THE VEHICLE BED TO ILLUMINATE OUTSIDE PERIMETER OF VEHICLE