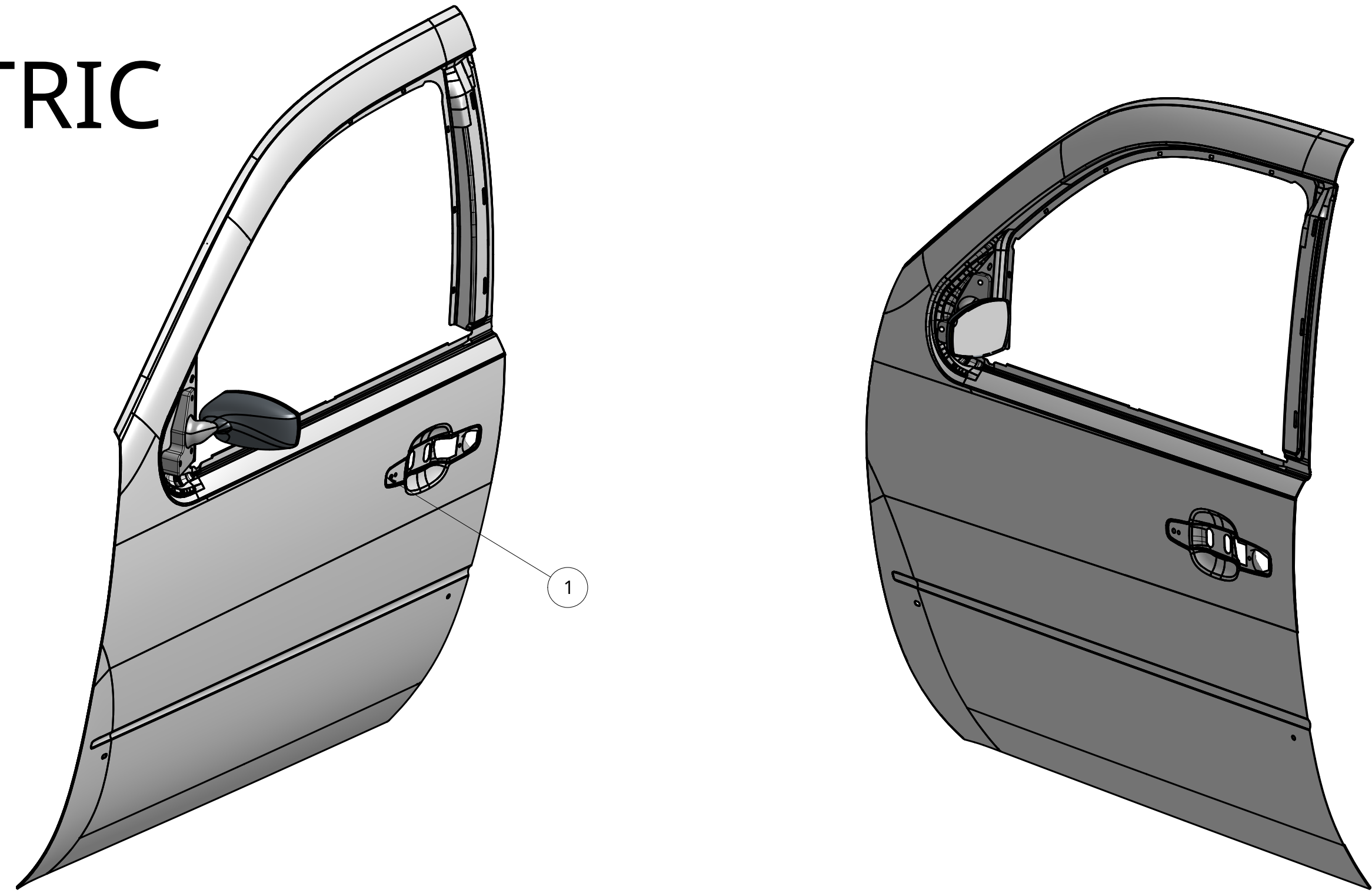
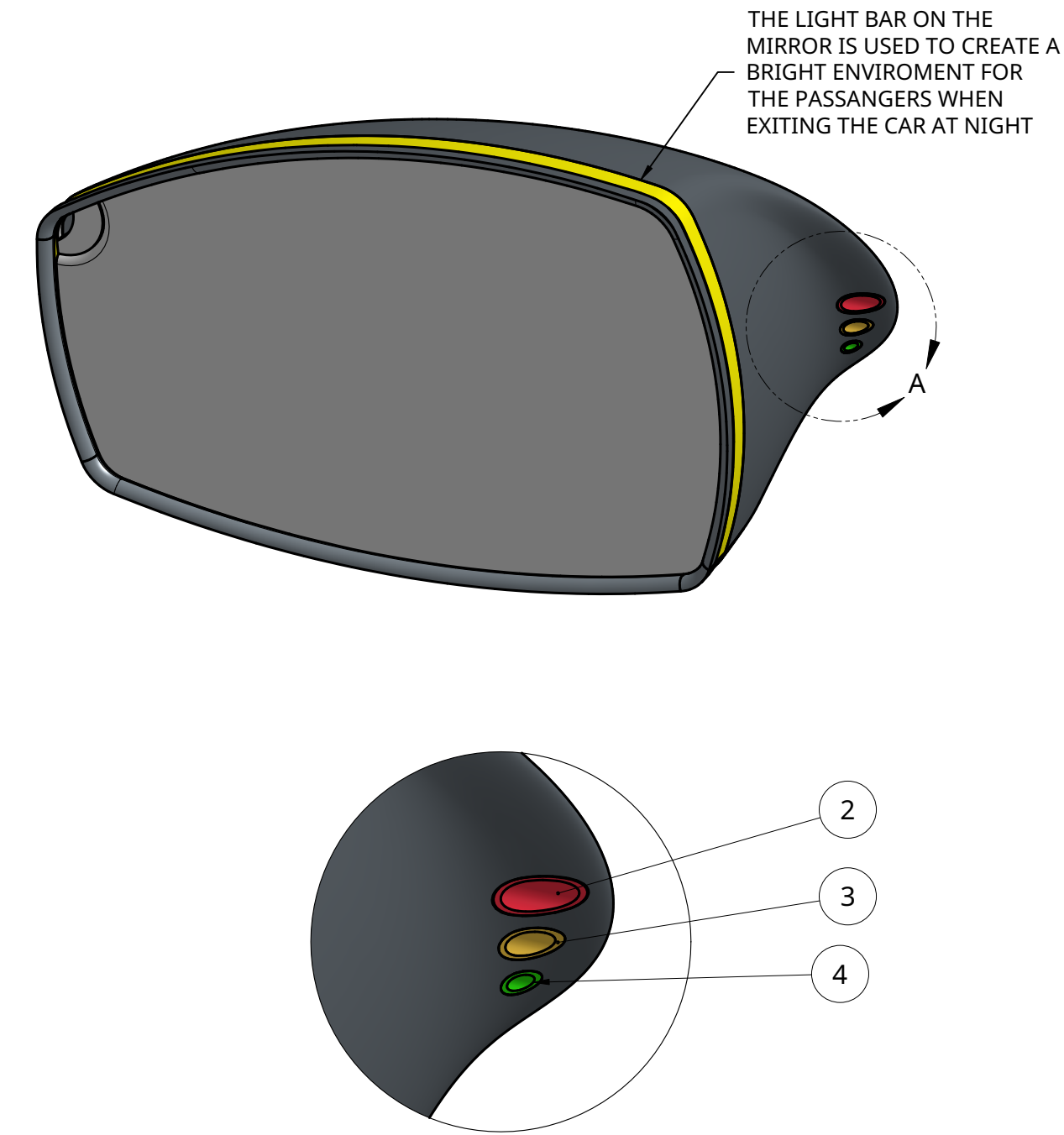


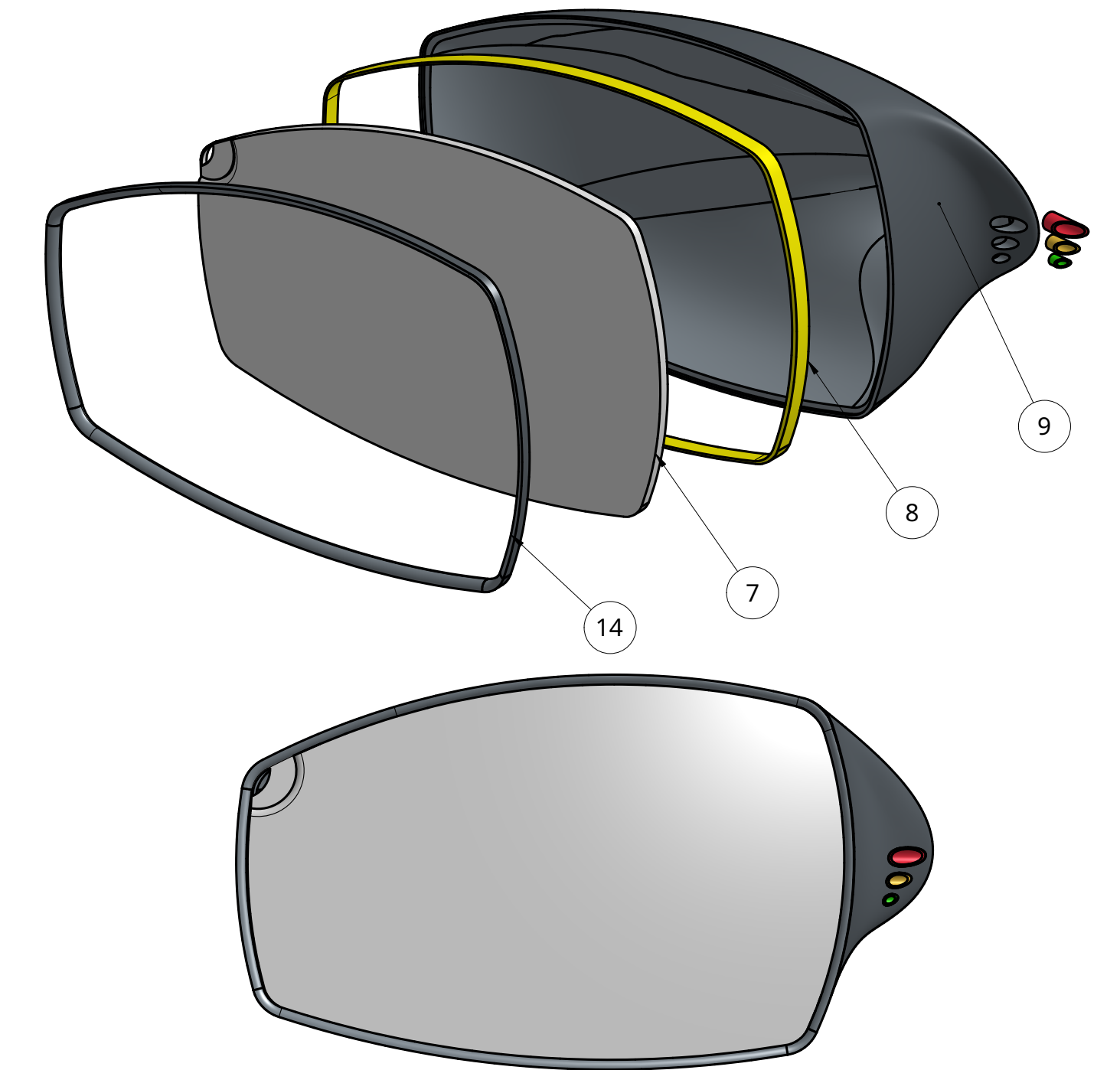
METRIC



LIGHTS DISPLAYS



MIRROR EXPLODE

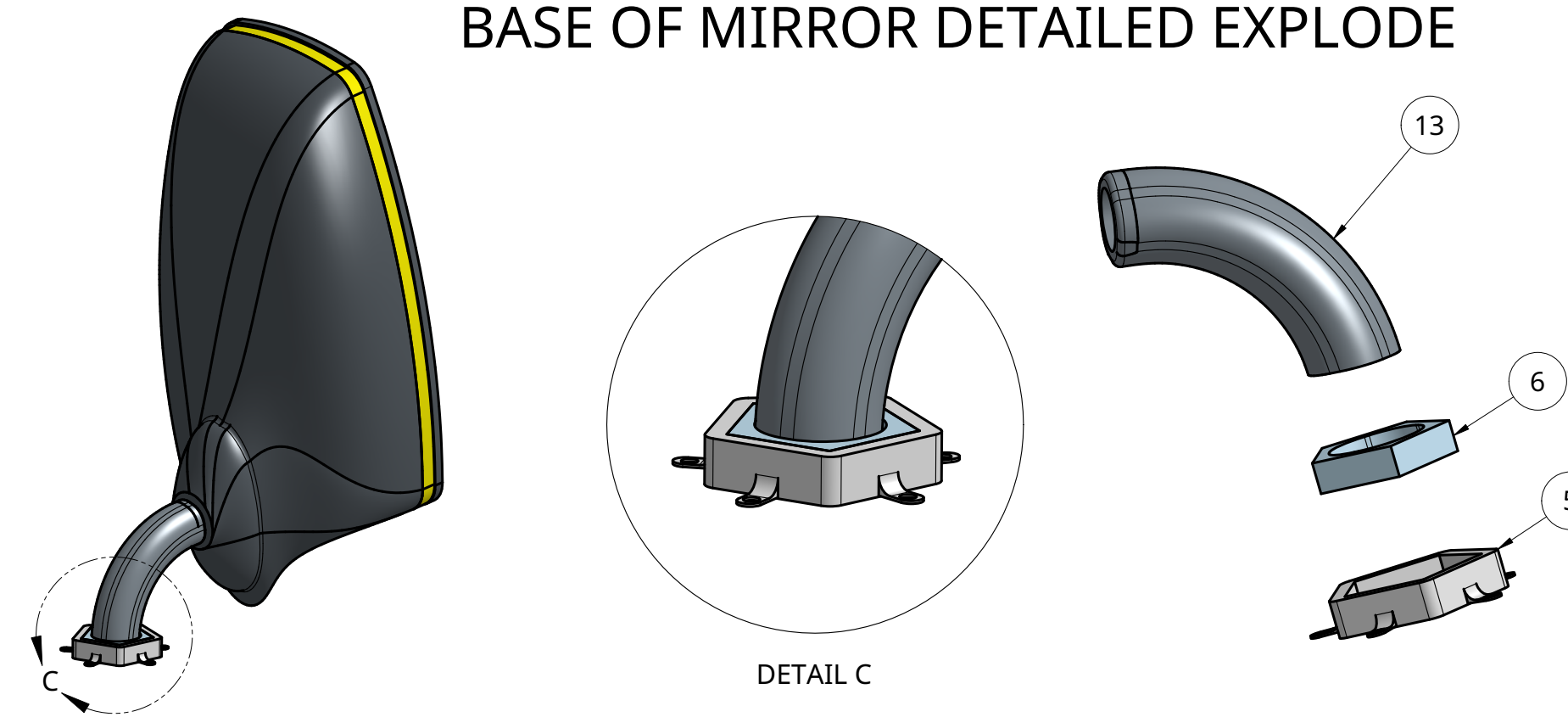


MIRROR LIGHTS ARE DESIGNED TO BE USED AS A SENSOR TO ALERT THE DRIVER WHEN IT IS SAFE TO CHANGE LANES

ASSEMBLY INSTRUCTIONS:

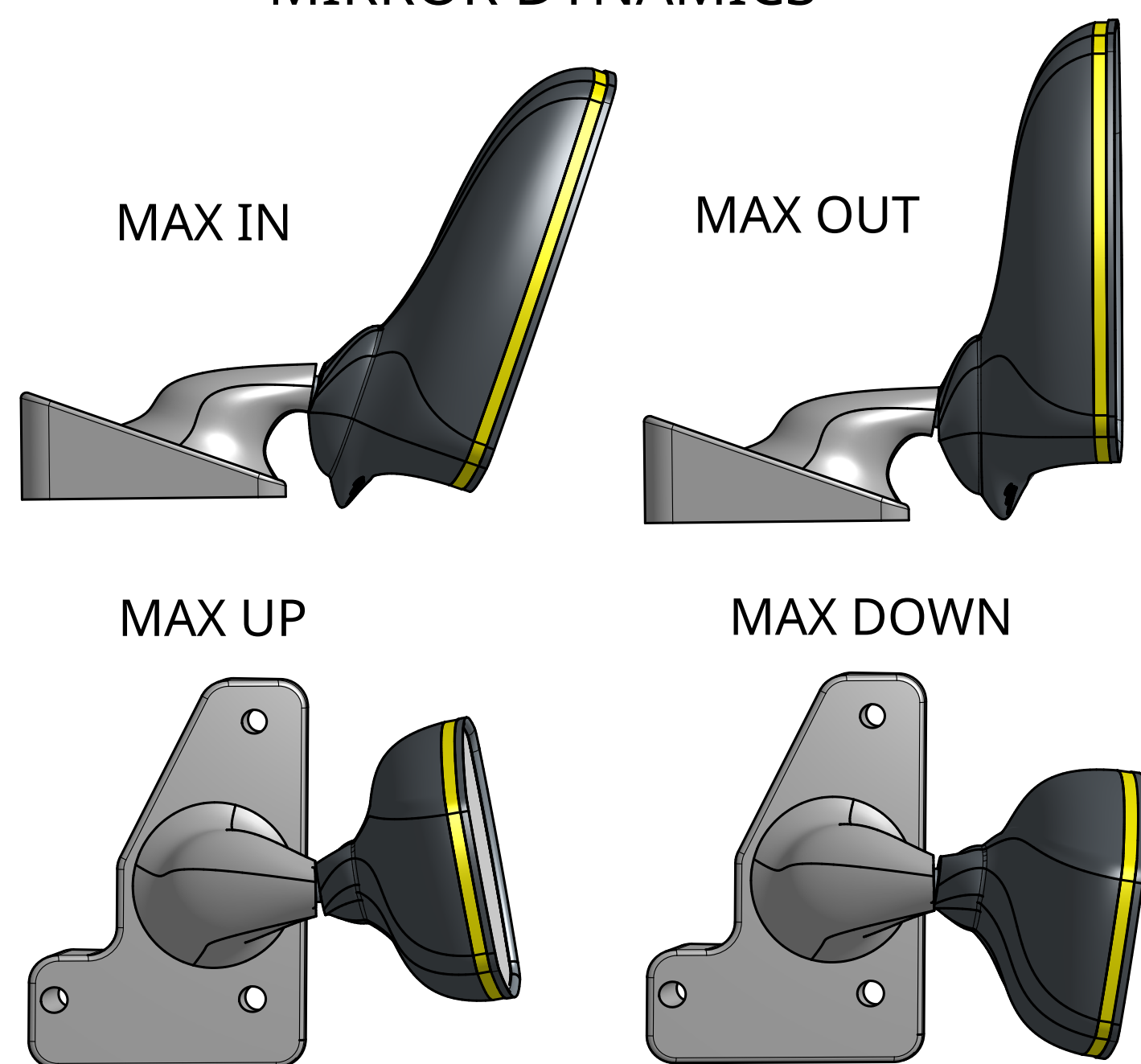
- 1.) USE ADHESIVES TO CONNECT THE CONNECTER (PART 6) TO THE DRILL SLOT (PART 5)
- 2.) USE ADHESIVES TO CONNECT THE TUBE (PART 13) TO THE CONNECTER (PART 6)
- 3.) DRILL THE DRILL SLOT TO THE SIDE DOOR
- 4.) SCREW IN THE BALL JOINT TO THE TUBE (PART 13)
- 5.) SNAP BALL JOINT CASING TO BALL JOINT (SEE BALL JOINT ASSEMBLY)
- 6.) PLACE MIRROR BASE OVER CONNECTION PIECES - WELD TO DOOR
- 7.) SNAP THE MIRROR OVER THE BALL JOINT HOUSING

BASE OF MIRROR DETAILED EXPLODE



PART#	PART NAME
1	DOOR
2	RED LIGHT
3	YELLOW LIGHT
4	GREEN LIGHT
5	DRILL SLOT
6	OUTER CASING
7	GLASS
8	LIGHT STRIP
9	MIRROR
10	BALL JOINT
11	BALL JOINT CASING
12	SIDE BASE
13	TUBE
14	OUTER MIRROR SHELL

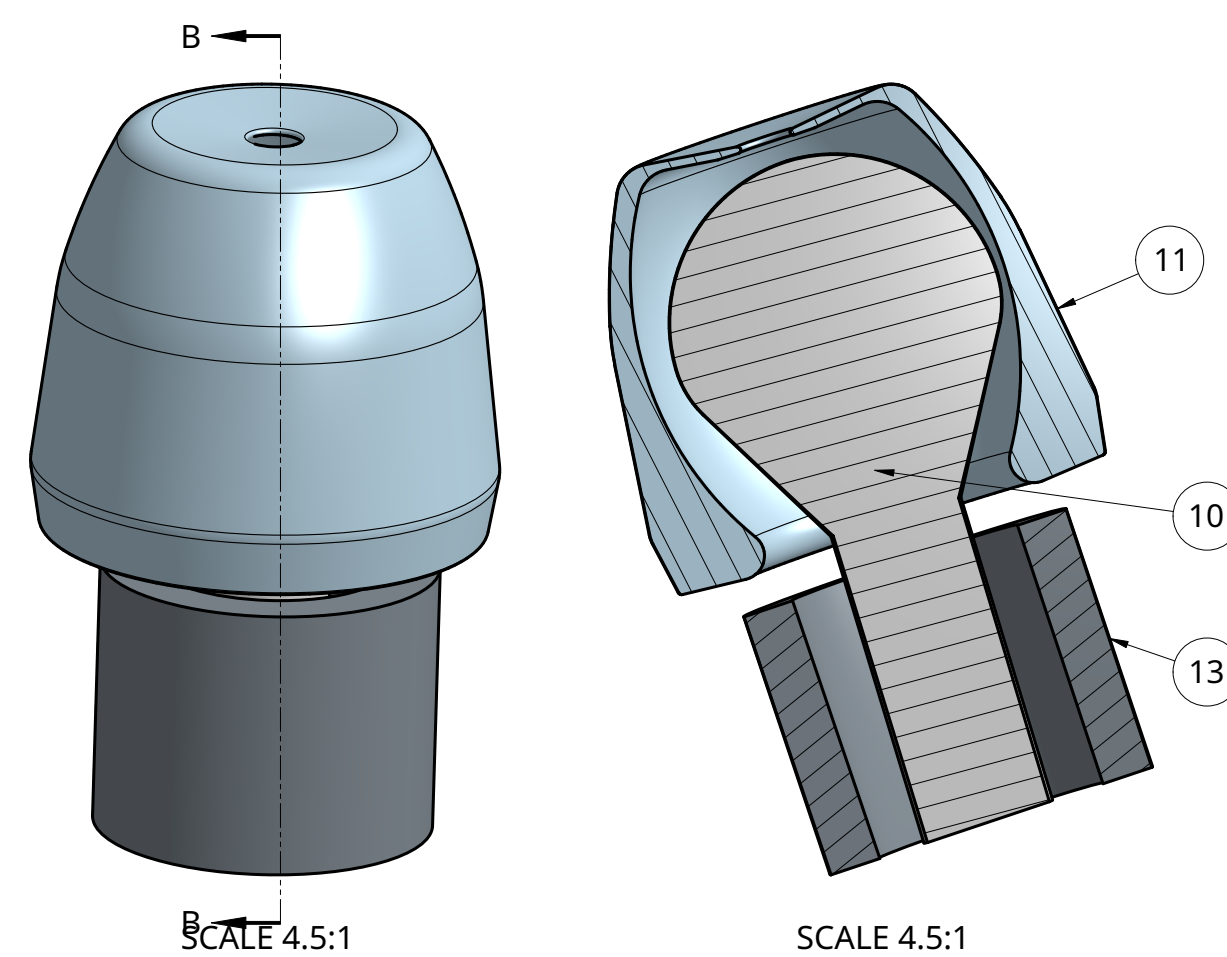
MIRROR DYNAMICS



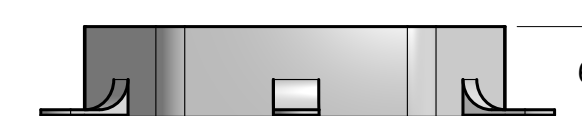
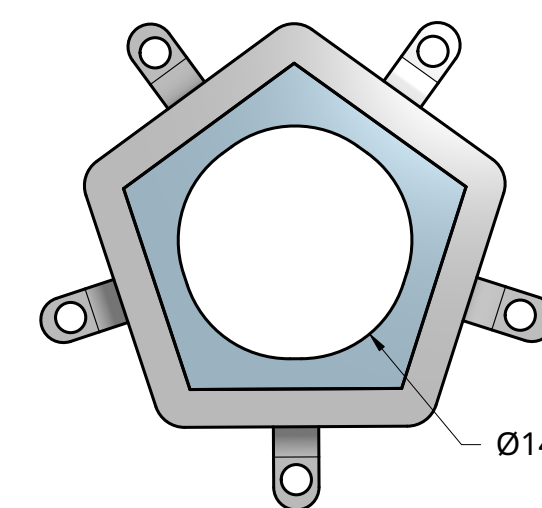
ALL VIEWS DIFFER 10° FROM DEFAULT POSITION

BALL JOINT ASSEMBLY

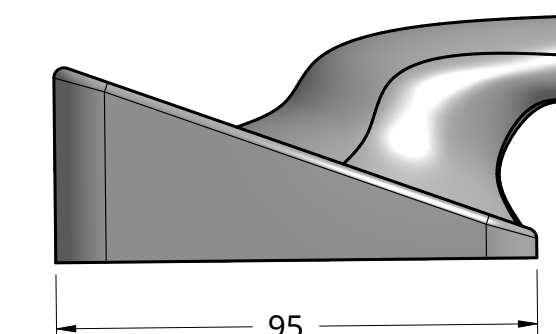
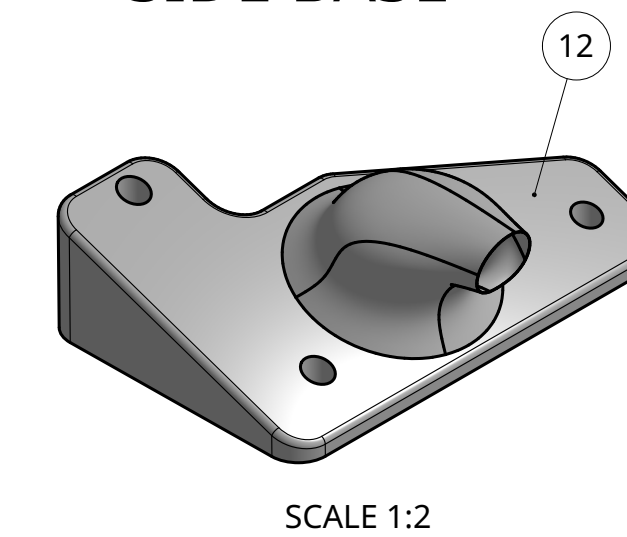
THE BALL JOINT CONNECTION WILL BE CONTROLLED BY MOTORS TO PROVIDE FOUR DEGREES OF MOTION TO THE MIRROR



BASE - DOOR CONNECTION



SIDE BASE



STUDENT NAME: JOSEPH FLYNN

SCHOOL: BRIGHTON HIGH SCHOOL

GRADE LEVEL: CATEGORY:

ENGINEERING DESIGN

12

EMAIL ADDRESS: FLYNNJR21@BRIGHTONK12.COM

TEACHER NAME: MATT JOURDEN