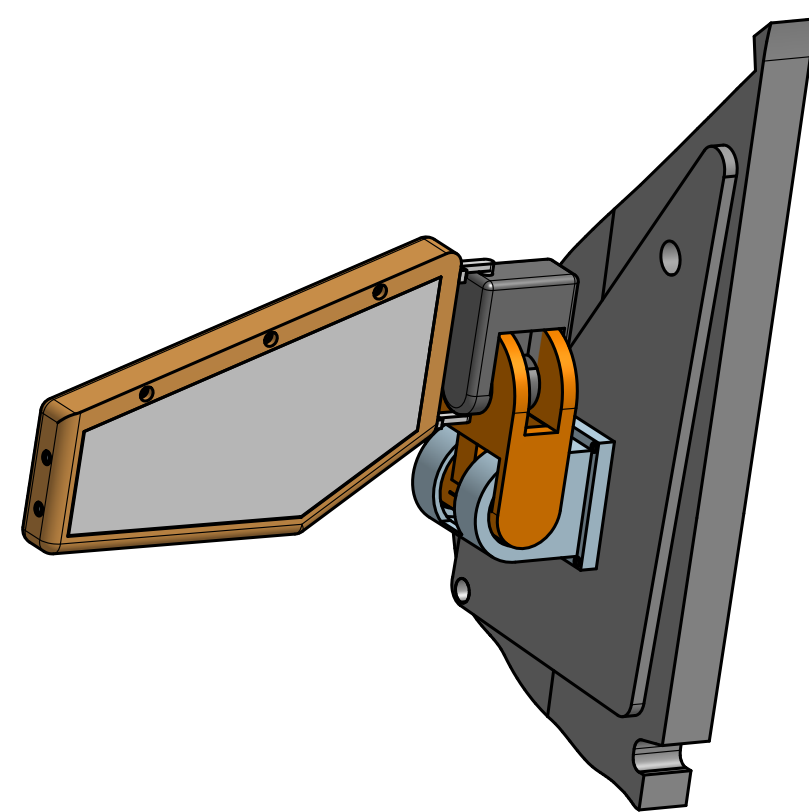
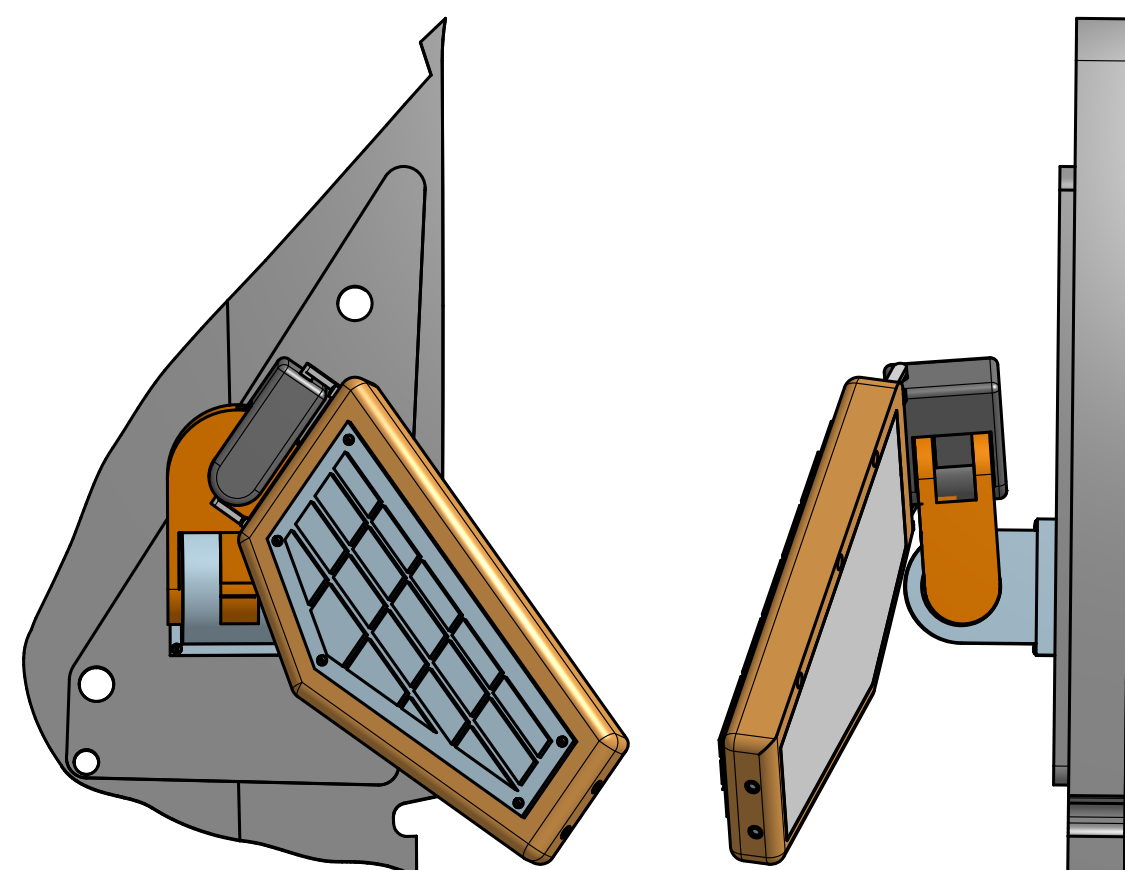


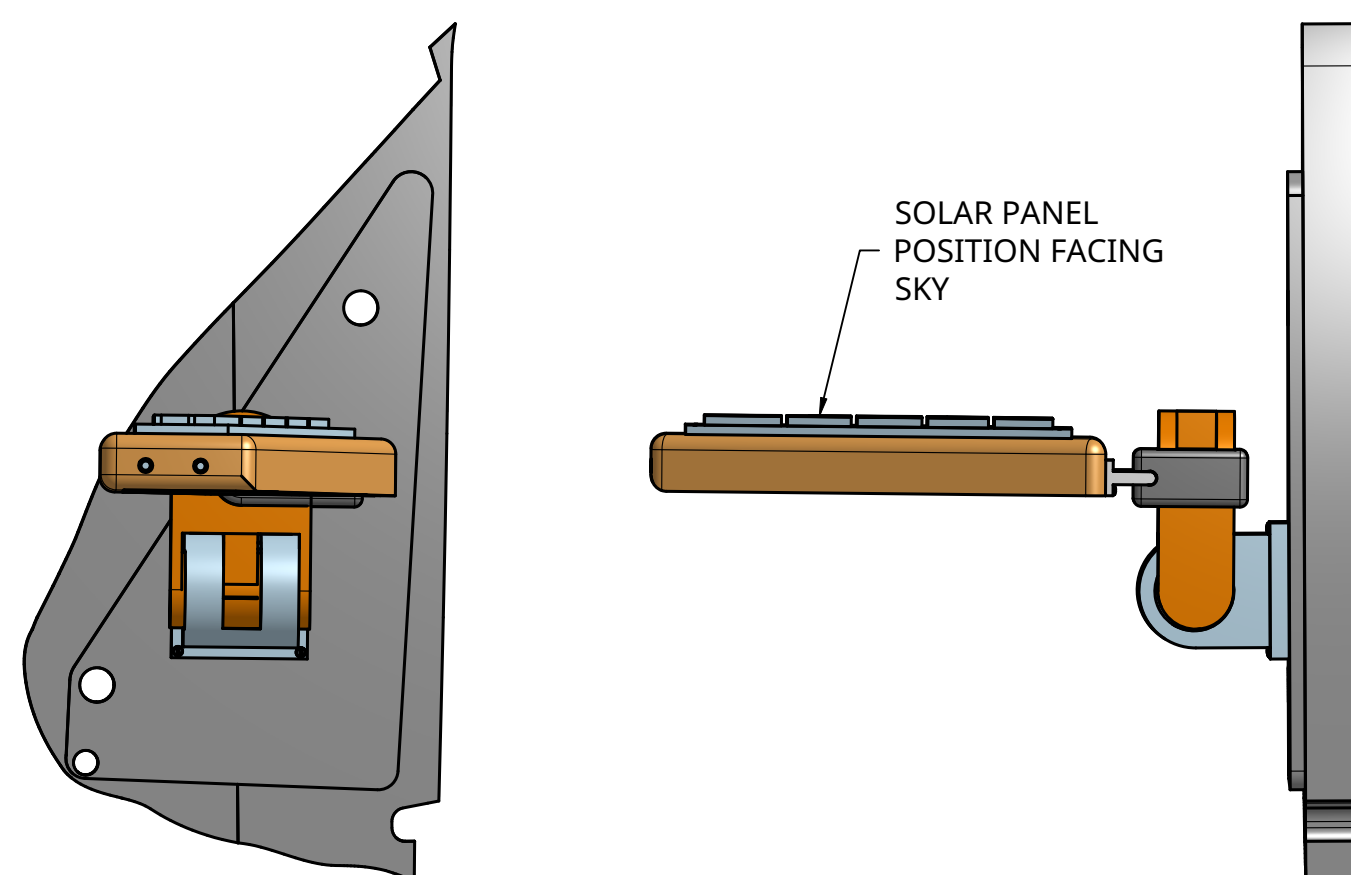
### STANDARD ORIENTATION



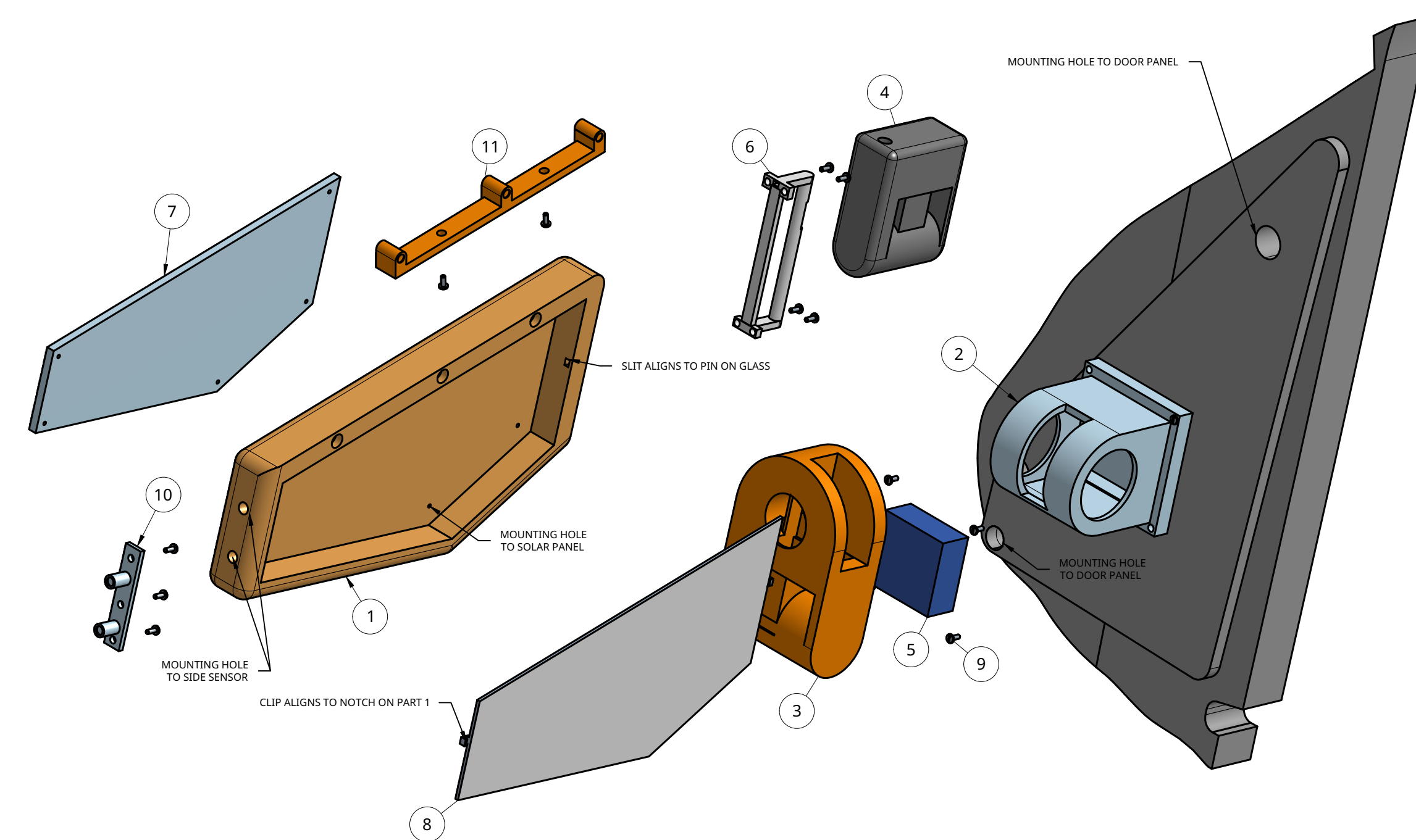
### CLOSED ORIENTATION



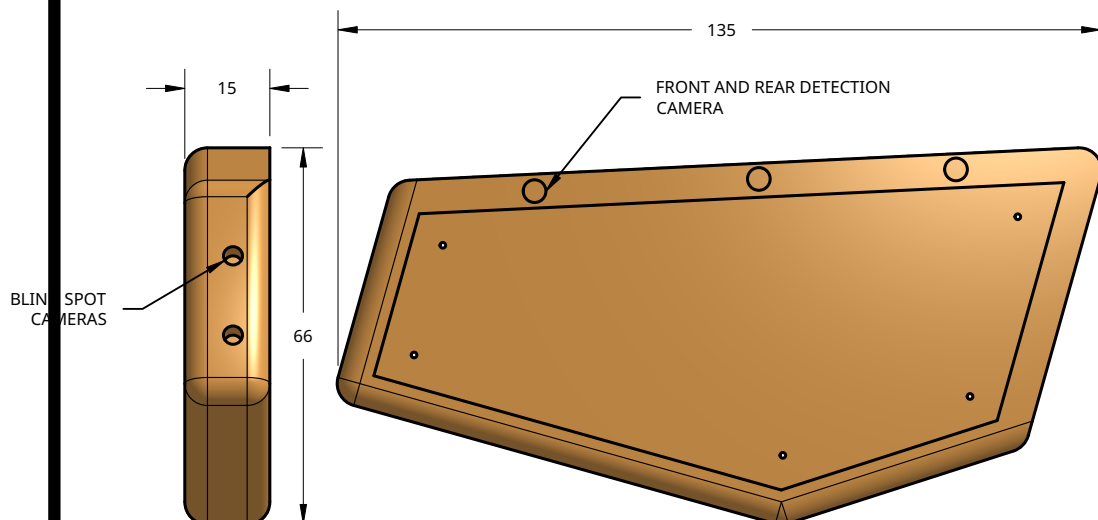
### SOLAR ORIENTATION



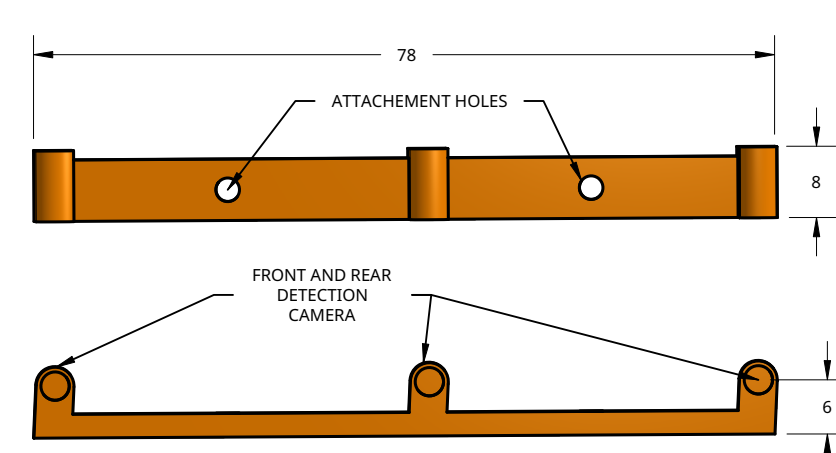
### EXPLODED VIEW



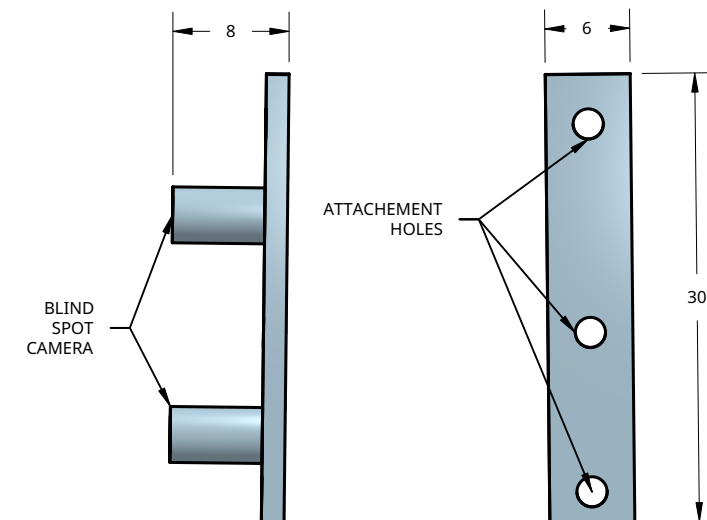
### SENSOR VIEW



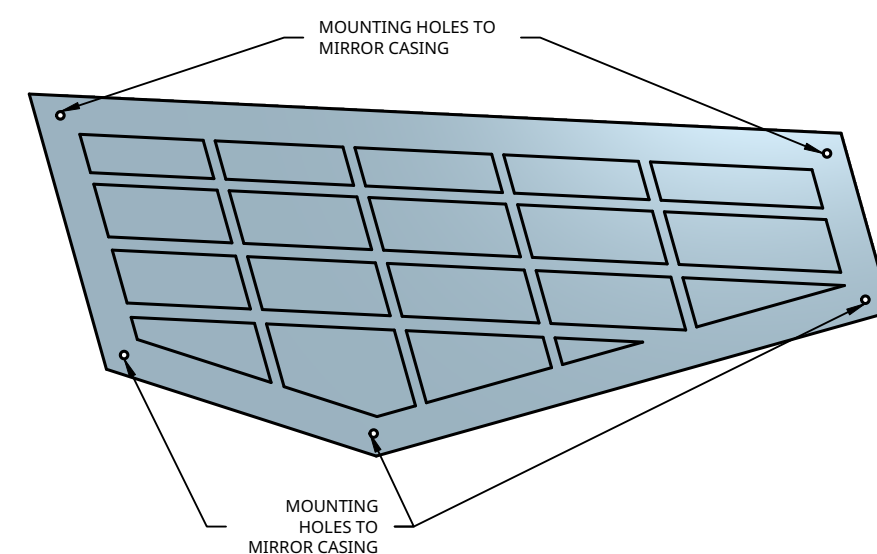
### TOP SENSOR



### SIDE SENSOR



### SOLAR PANEL



METRIC

### ASSEMBLY NOTES

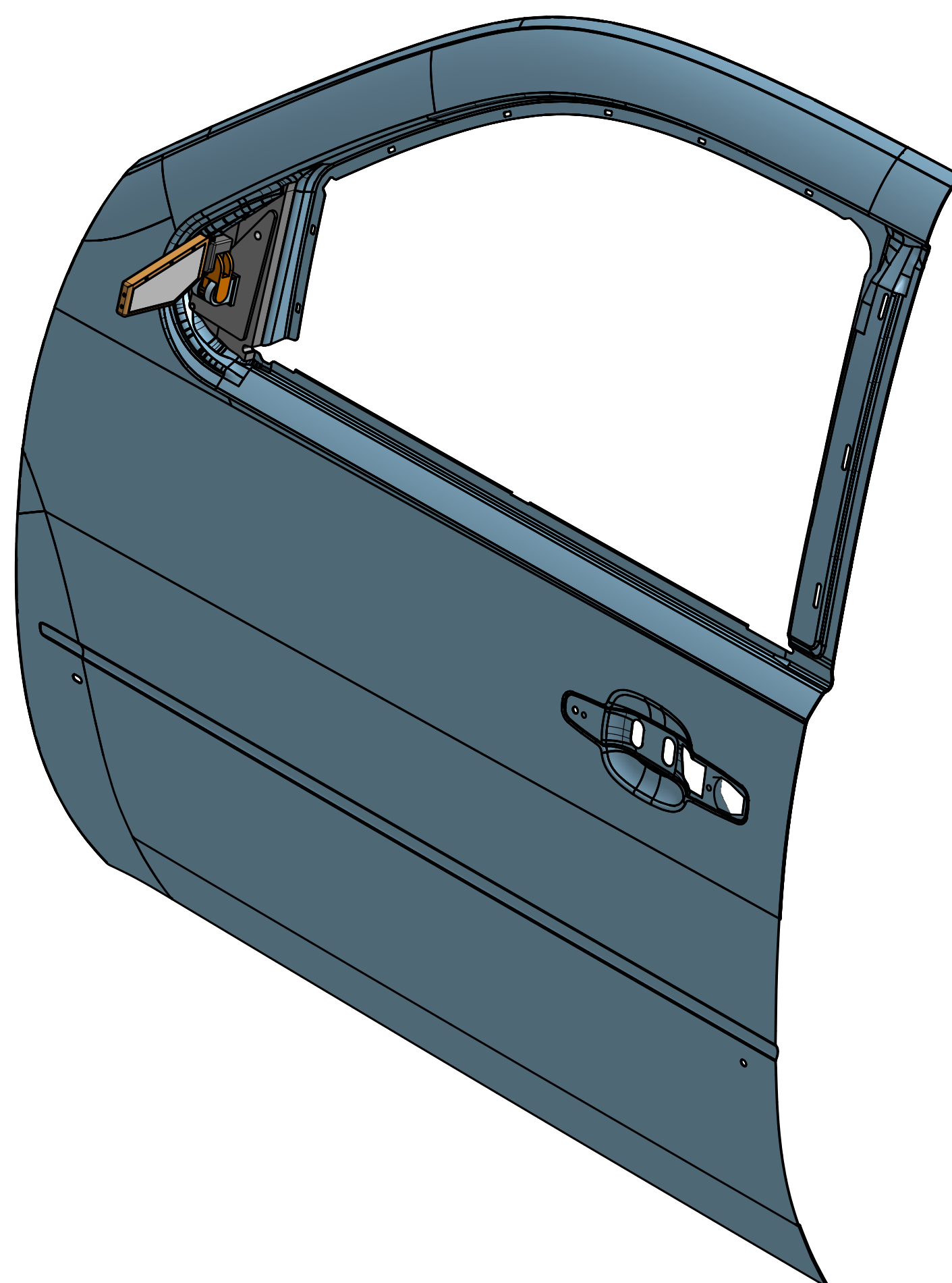
- 1.) SCREW PART 2 HOLES 1-4 INTO PART 6 HOLES 1-4
- 2.) ATTACH PARTS 3, 4 AND 6 TO PART 2
- 3.) SCREW PART 6 TO PART 1
- 4.) ALIGN THE PART 8 TO PART 1 USING THE WEDGES
- 5.) SCREW IN PARTS 10 AND 11 TO PART 1
- 6.) APPLY ADHESIVE TO THE BACK SIDE OF PART 8 (GLASS)
- 7.) ALIGN CLIP ON PART 8 TO NOTCH ON PART 1 (SEE EXPLODE VIEW)

### FEATURES

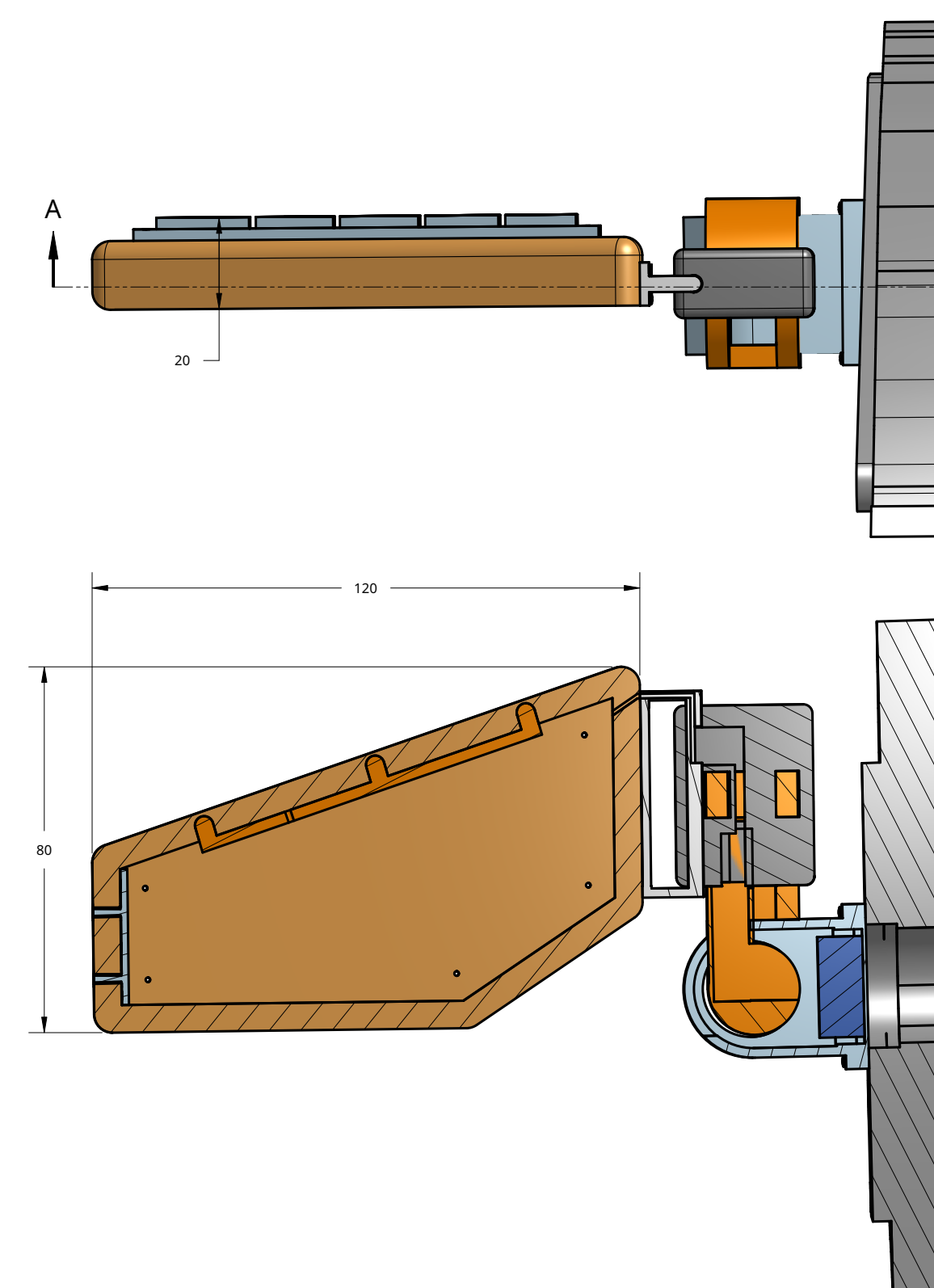
A ROBOTIC ARM THAT ALLOWS THE MIRROR FULL ACCESS TO MULTIPLE VIEWS, USING THE SENSORS/CAMERAS WHICH PREVENT BLIND SPOTS AND OTHER ROAD DANGERS.

ROBOTIC ARM CONTROLLED BY DRIVER USING TOGGLE BUTTONS LOCATED ON DRIVERS DOOR

ROTATION  
CLOSED TO OPEN: 70 DEGREES  
SKY TO GROUND: 180 DEGREES



### SECTION VIEW



PART#	QTY.	PART NAME
1	1	MIRROR CASING
2	1	BASE JOINT
3	1	HIP JOINT
4	1	ELBOW JOINT
5	1	BATTERY PACK
6	1	WRIST JOINT
7	1	SOLAR PANEL
8	1	GLASS PANEL
9	6	Binding head machine screw #00-90 x 0.125
10	1	SIDE SENSOR
11	1	TOP SENSOR

STUDENT NAME: Sean Flynn

SCHOOL: Brighton High School

GRADE LEVEL: CATEGORY:

DESIGN CONCEPT

12

EMAIL ADDRESS: FlynnSA21@brightonk12.com

TEACHER NAME: Mathew Jourden