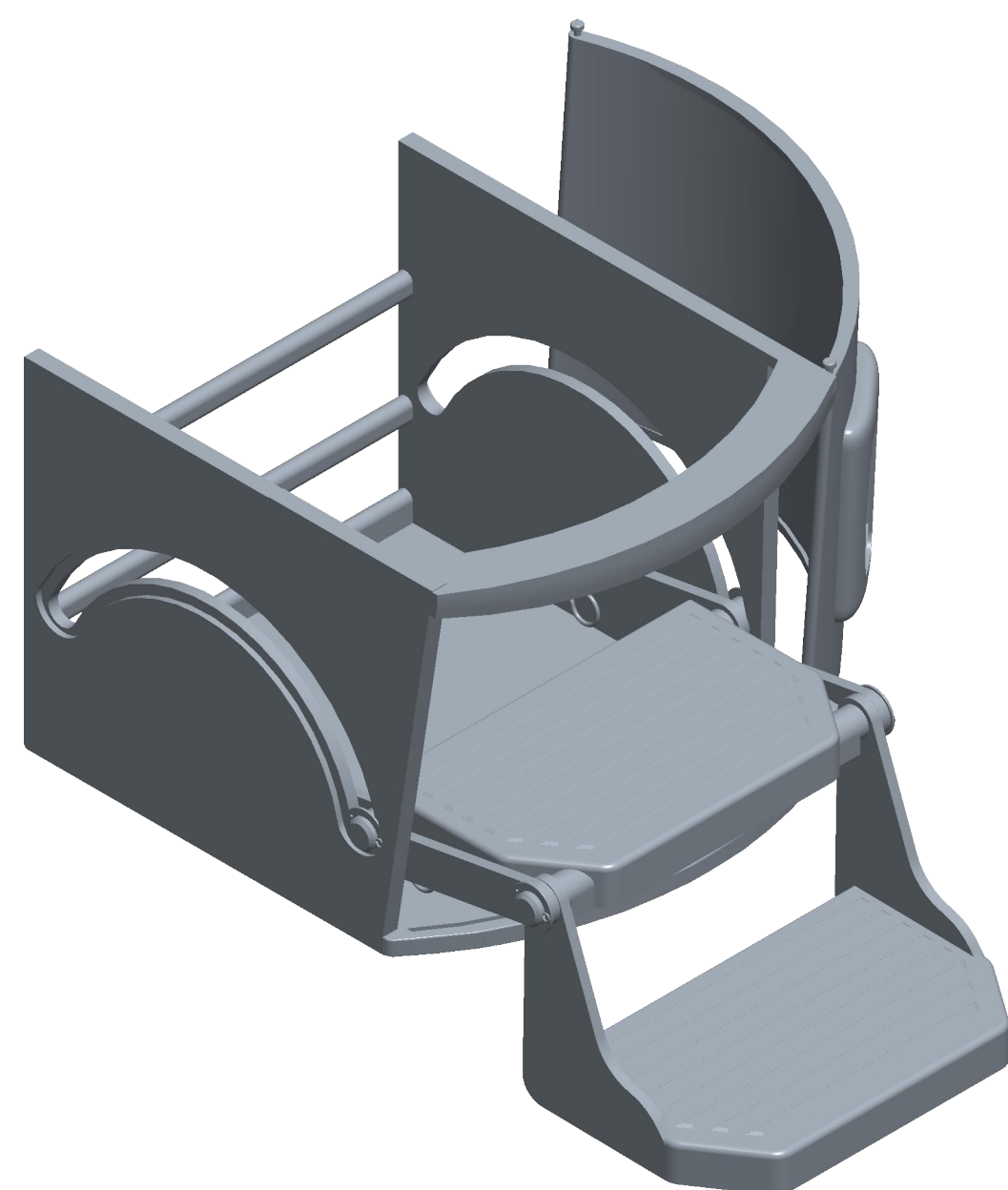
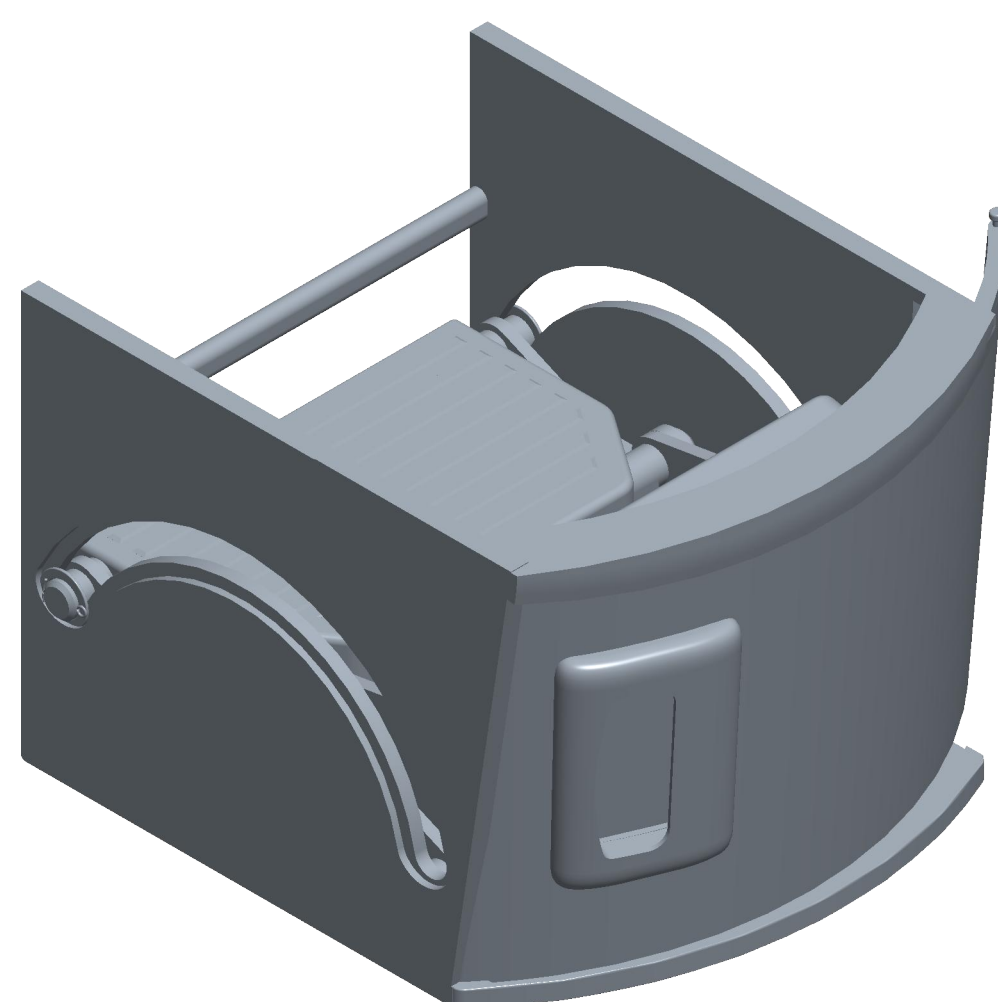


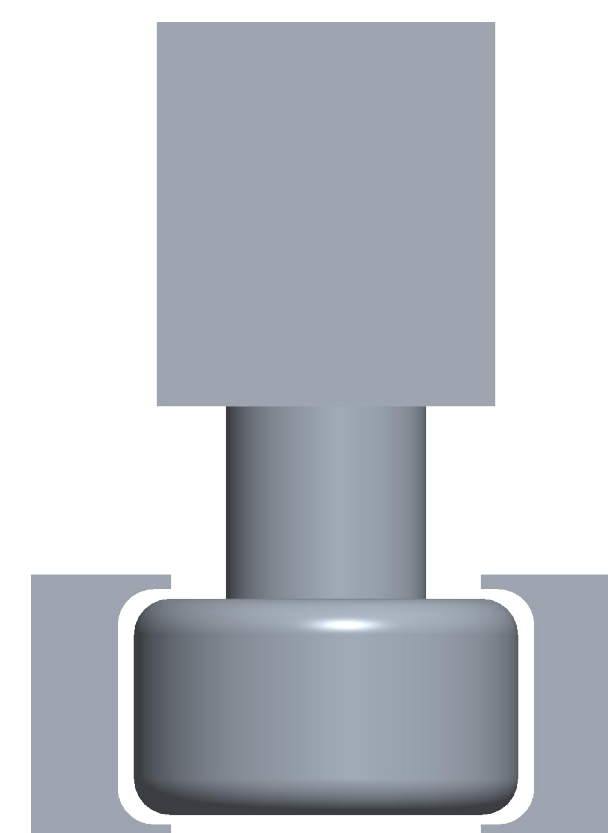
UNFOLDED ASSEMBLY



FOLDED ASSEMBLY

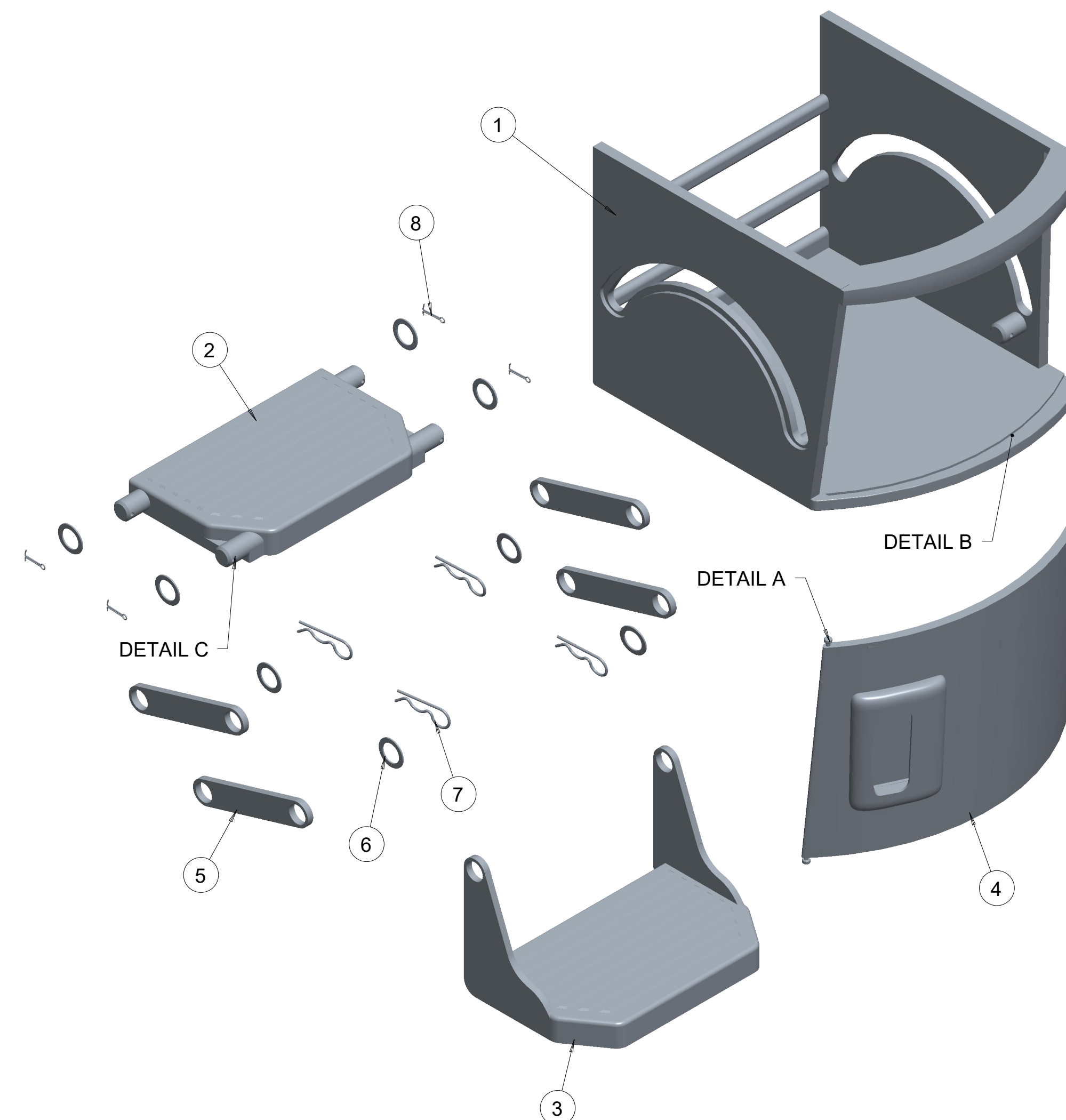


DOOR SLIDER AND TRACK

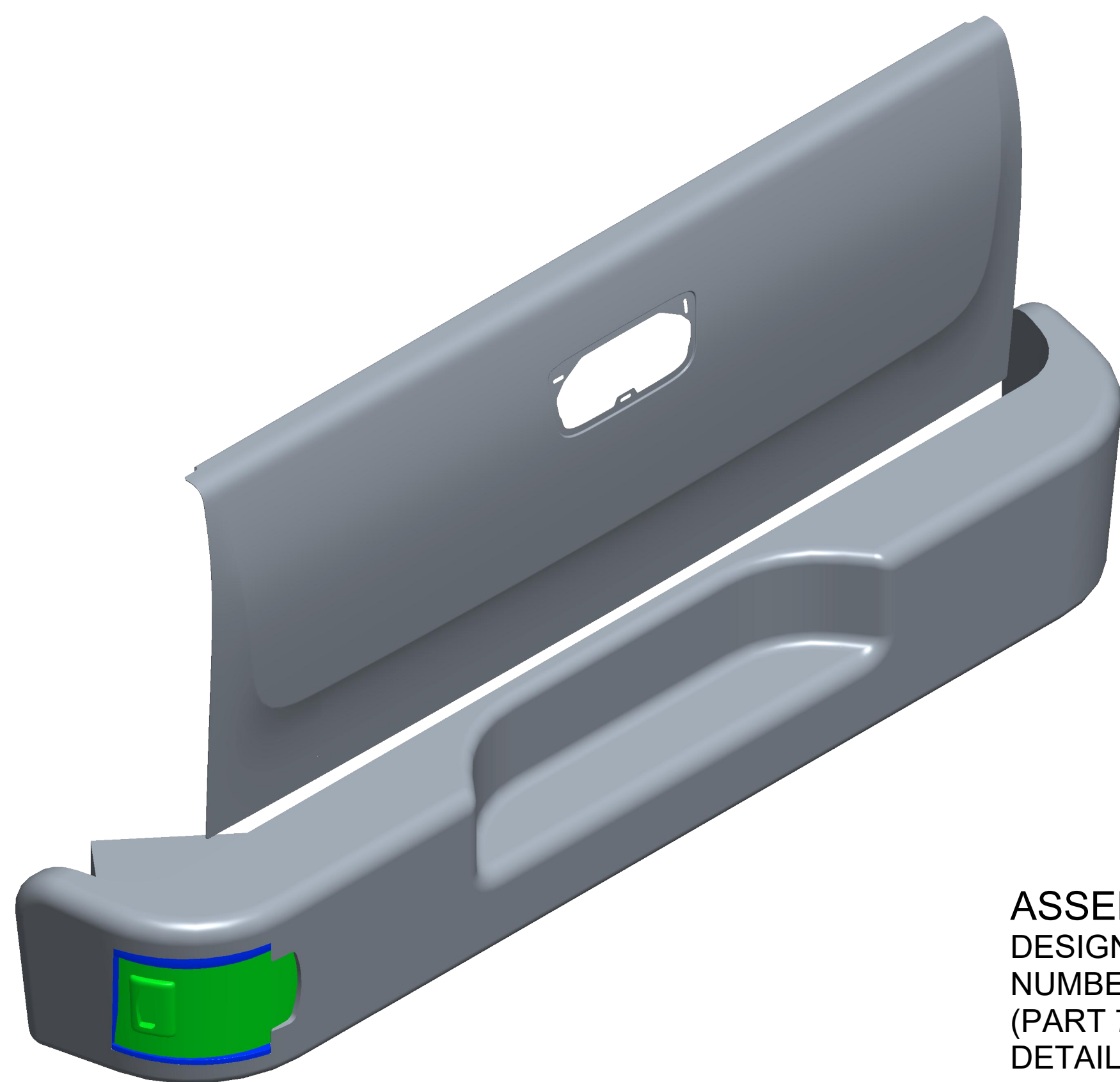


WHEEL- TRACK CROSSSECTION
SEE EXPLODED ASSEMBLY FOR LOCATION
DETAIL A PIN AND WHEEL
DETAIL B TRACK

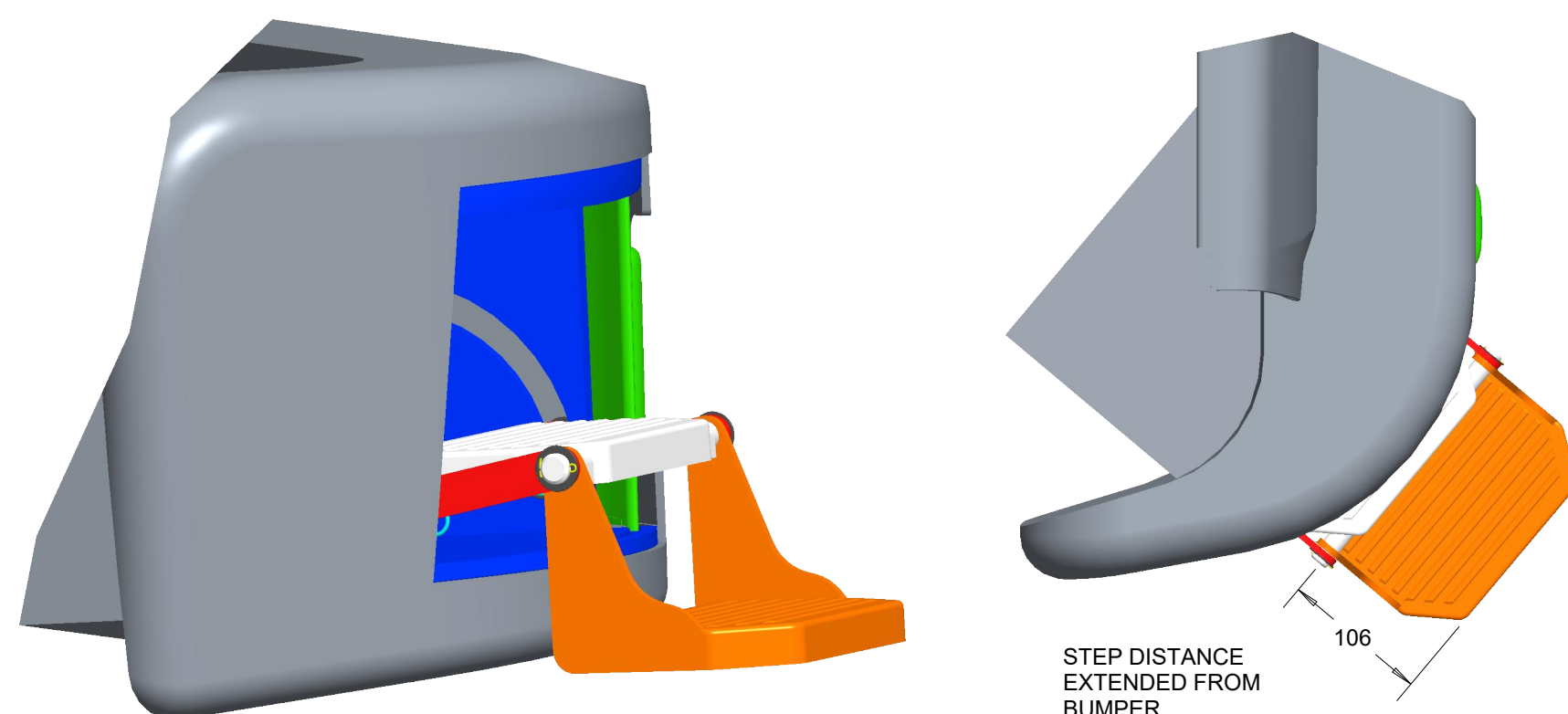
EXPLODED ASSEMBLY



FULL ASSEMBLY WITH BUMPER



UNFOLDED ASSEMBLY ON BUMPER



METRIC

PART NAME	PART NUMBER	QUANTITY
HOUSING	1	1
STEP 01	2	1
STEP 02	3	1
DOOR	4	1
STEP BRACKET	5	4
WASHER	6	8
COTTER PIN 01	7	4
COTTER PIN 02	8	4

ASSEMBLY INSTRUCTIONS:

DESIGN FEATURES TWO STEPS WHICH BOTH FOLD OUT FROM THE HOUSING ATTACHED TO THE INSIDE OF THE BUMPER. STEP NUMBER 01 (PART 2) IS ATTACHED TO THE HOUSING WITH FOUR BRACKETS (PART 5) WHICH ARE SECURED IN BY A COTTER PIN (PART 7) AND A WASHER (PART 6). STEP NUMBER 02 (PART 3) ATTACHED TO THE OUTSIDE RODS OF STEP NUMBER 01 (PART 2, DETAIL C) AND SECURED BY COTTER PIN 02 (PART 8) AND WASHER (PART 6). WITH THE SELECT CONTACT POINTS AND BRACKETS THE STEPS CAN SLIDE/FOLD IN AND OUT OF THE HOUSING. THE DOOR IS ATTACHED TO THE HOUSING BY A TRACK SYSTEM (DETAIL B) AND WHEEL (DETAIL A) SIMILAR TO A GARAGE DOOR. THE TRACK IS ON THE TOP AND BOTTOM OF THE HOUSING AND THE WHEELS ARE ON THE TOP AND BOTTOM OF THE DOOR. THE TRACK ON THE HOUSING LINES UP WITH A TRACK ON THE BUMPER IN A CUBBY LIKE AREA WHERE THE DOOR IS STORED WHEN OPENED.

STUDENT NAME: BEN BLUHM

SCHOOL: BRIGHTON HIGH SCHOOL

GRADE LEVEL: CATEGORY:

DESIGN CONCEPT

11

EMAIL ADDRESS: BLUHMBD19@BRIGHTONK12.COM

TEACHER NAME: MR. JOURDEN