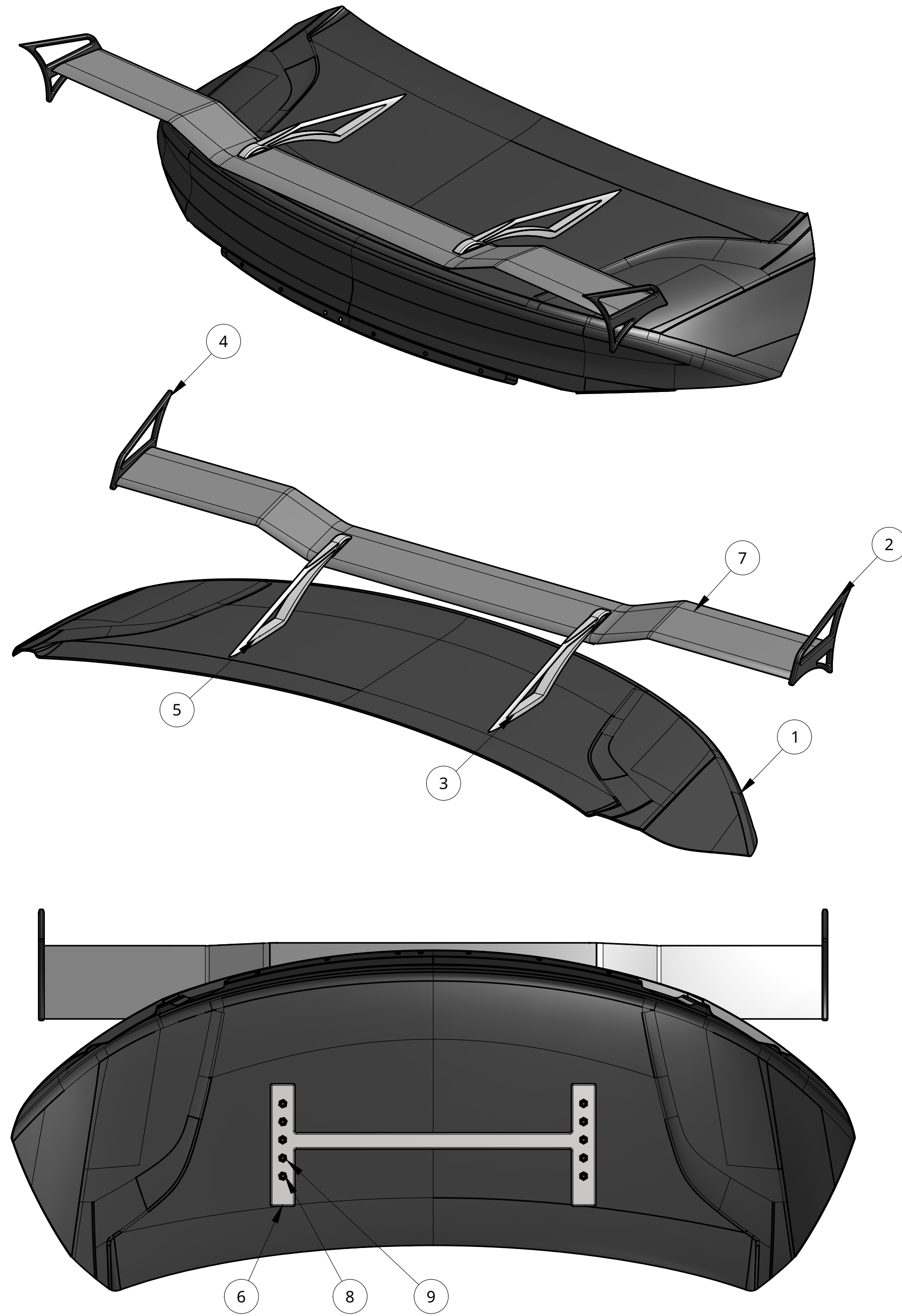
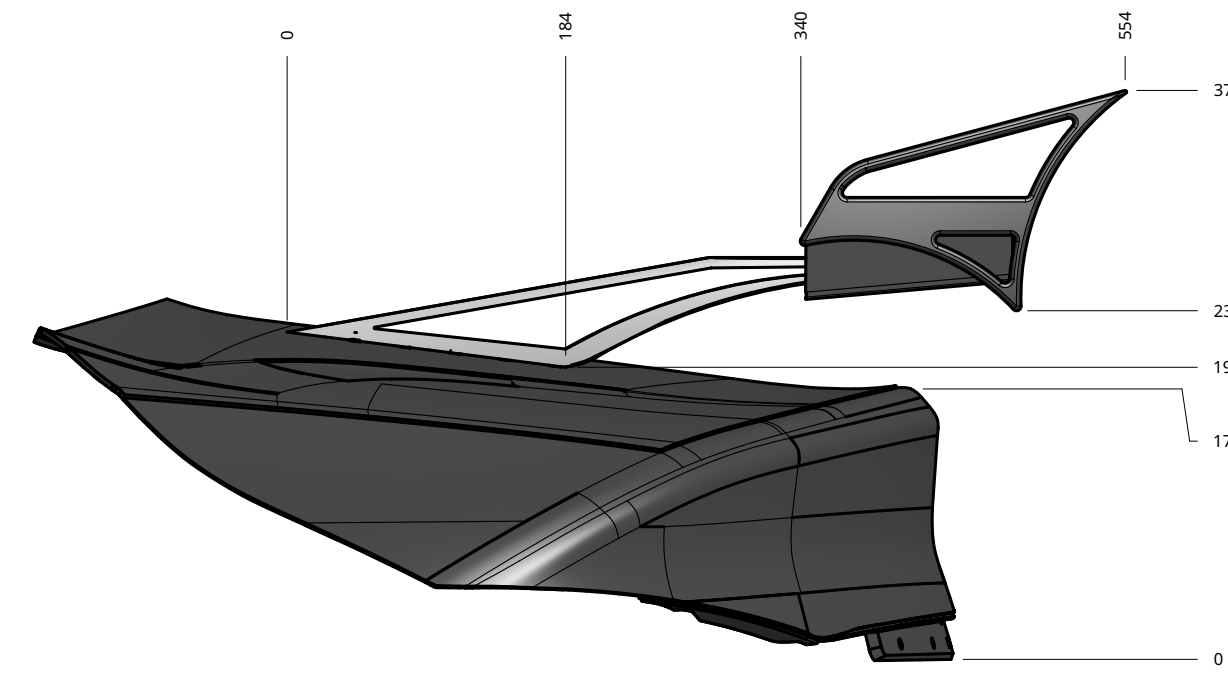


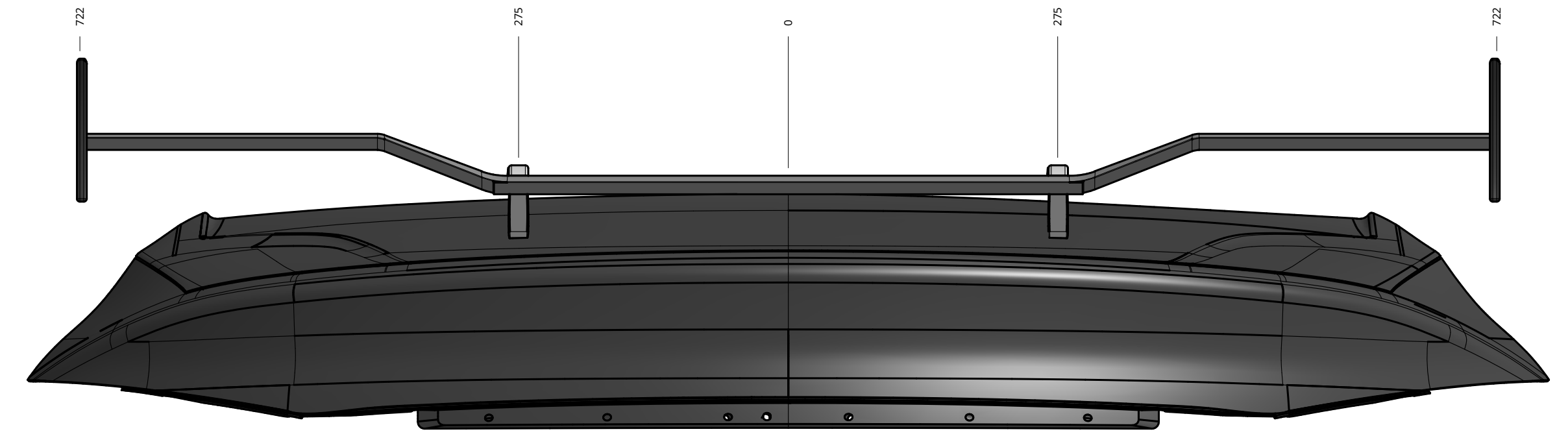
FULL ASSEMBLY



PROFILE VIEWS



METRIC



DESCRIPTION

THIS ASSEMBLY IS MADE TO NOT ONLY PROVIDE DOWNFORCE ON THE VEHICLE, ALONG WITH ADDING A FASHIONABLE/AESTHETIC APPEAL.

SPOILER BODY PANEL PARTS ARE MADE OF ABS PLASTIC FOR ITS DURABILITY AND LIGHT WEIGHT.

ASSEMBLY INSTRUCTIONS

STEP 1: BORE HOLES IN CAR BODY

STEP 2: ASSEMBLY FIN TO WING

- APPLY ADHESIVE TO SNAP FITTING ON RIGHT FIN
- ALIGN/PRESS SNAP FITTING A ON LEFT FIN WITH SLOT OPENING A ON WING (SEE FIN-WING ATTACHMENT)
- REPEAT STEPS FOR RIGHT FIN WITH RIGHT SIDE OF WING

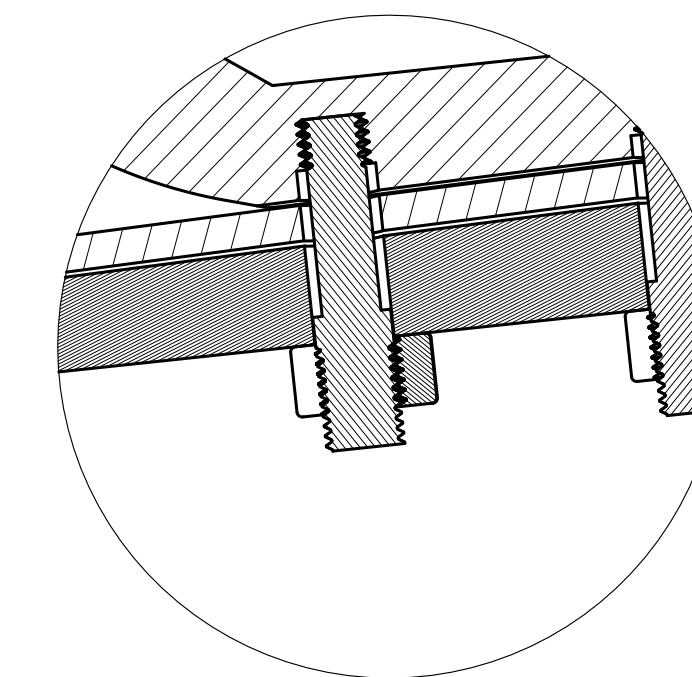
STEP 3: ASSEMBLY ARM TO WING

- APPLY ADHESIVE TO RIGHT ARM PIN A AND B
- ALIGN LEFT ARM PIN A TO HOLE A AND PIN B TO HOLE B ON WING (SEE DETAIL C)
- PRESS FIRMLY TO TO ALLOW ADHESIVE TO CURE
- REPEAT STEPS FOR RIGHT ARM TO WING

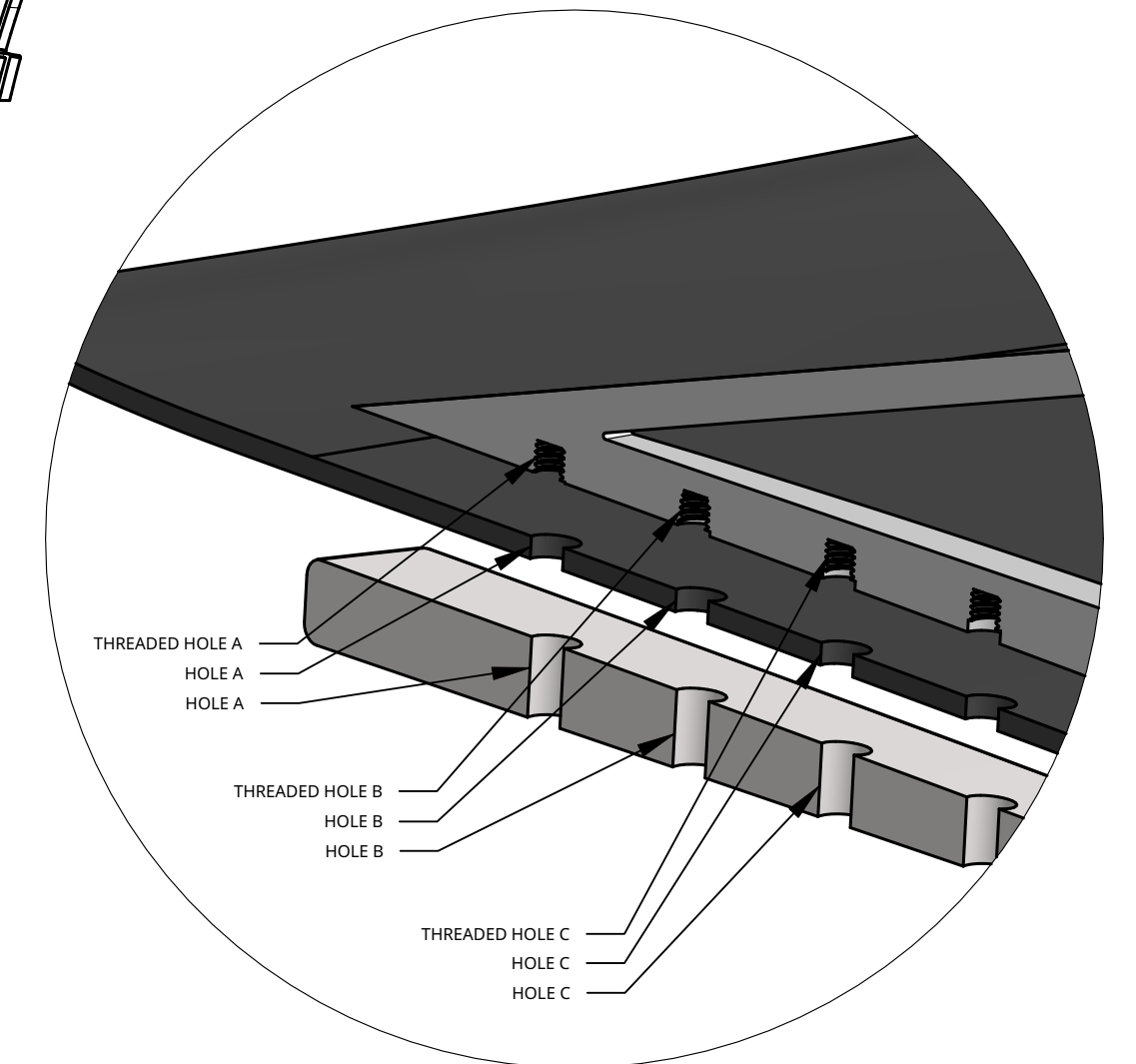
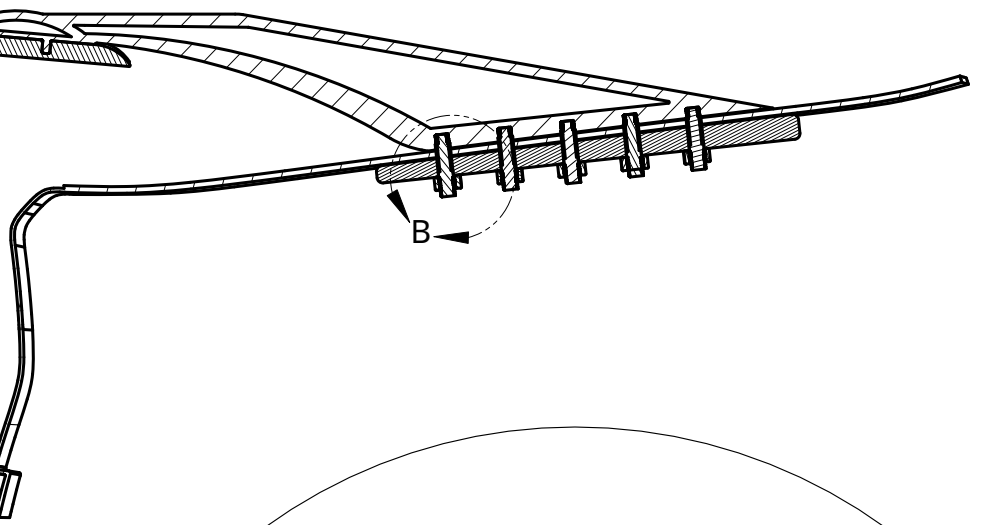
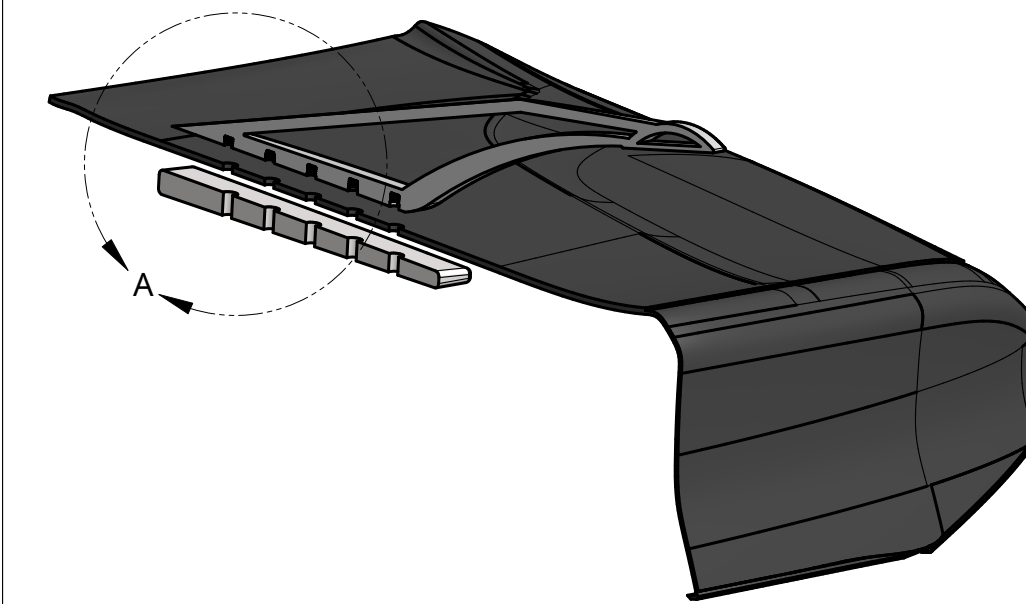
STEP 4: WING MOUNT TO CAR BODY

- APPLY FRICTION BARRIER TO BOTTOM OF RIGHT AND LEFT ARM
- FASTEN EACH THREADED ROD TO THREADED HOLE(S) ON RIGHT AND LEFT ARMS
- ALIGN THREADED RODS FROM ARMS TO HOLES FROM THE EXTERIOR OF CAR BODY (SEE DETAIL A)
- FROM INTERIOR OF CAR BODY WITH PART SUPPORT'S CURVED SURFACE (MARKED UP) AND SURFACE MARKED BACK ALIGN HOLES WITH THREADED RODS FROM ARM/WING ASSEMBLY (SEE DETAIL B)
- FASTEN WASHER/NUTS TO THREADED RODS

CAR BODY-ARM-SUPPORT ASSEMBLY SECTION VIEWS

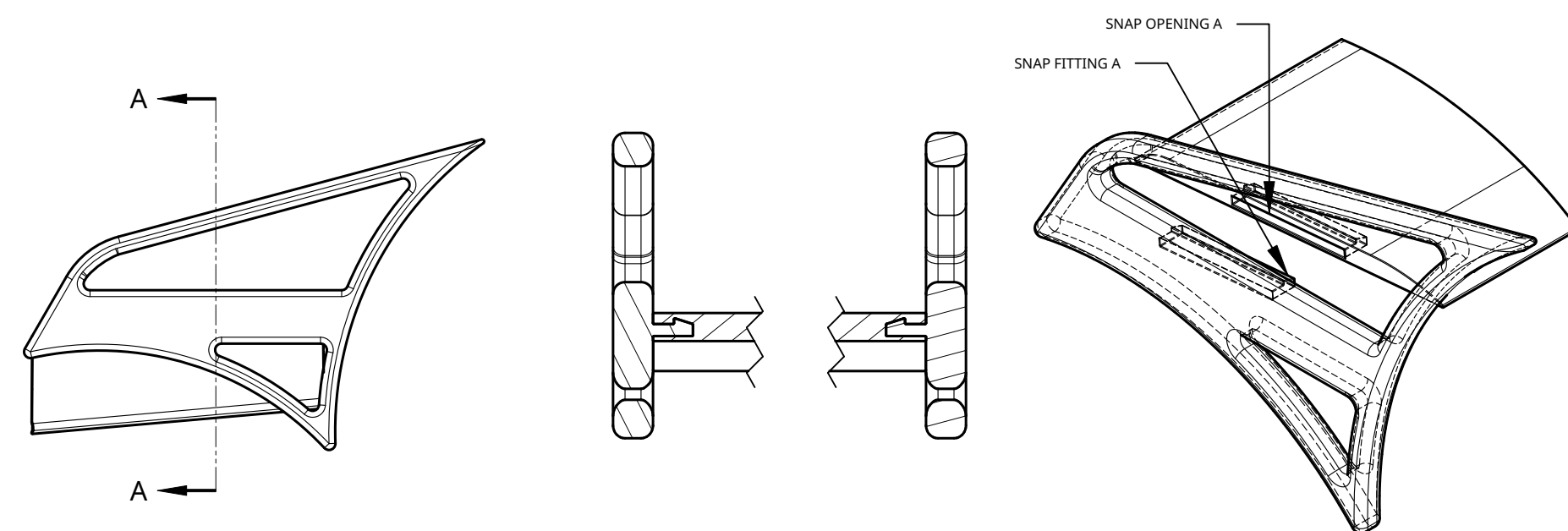


DETAIL B

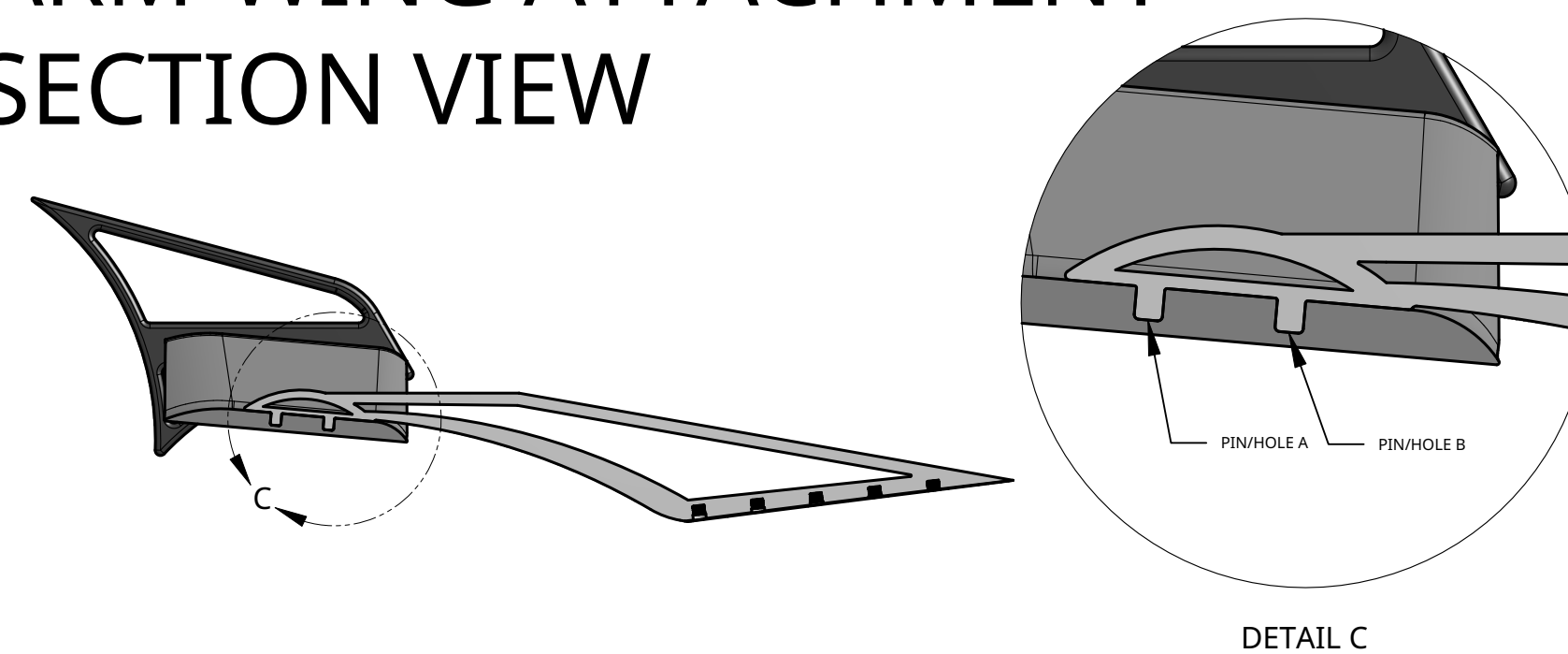


DETAIL A

FIN-WING ATTACHMENT



ARM-WING ATTACHMENT SECTION VIEW



DETAIL C

PART#	QTY.	PART NAME	Material
1	1	CAR BODY	Aluminum - 5052
2	1	LEFT FIN	ABS
3	1	LEFT ARM	ABS
4	1	RIGHT FIN	ABS
5	1	RIGHT ARM	ABS
6	1	SUPPORT	ABS
7	1	WING	ABS
8	10	SCREW	Carbon Steel
9	10	NUT	Steel

STUDENT NAME:
LILA FELDSTEIN
SCHOOL:
BRIGHTON HIGH SCHOOL
GRADE LEVEL: CATEGORY:
ENGINEERING DESIGN
12
EMAIL ADDRESS:
feldsteinlg22@brightonk12.com
TEACHER NAME:
MATT JOURDEN