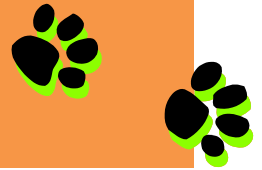


The Paw Print



Dates To Remember

Nov 5/6	NO SCHOOL
Nov 6	Orchestra Concert 7:00pm MIS gymnasium
Nov 14	Picture Retake Day (am)
Nov 14	Parent Information Night Social Media and your Students 6:30-7:30pm
Nov 16	Activity Afternoon 3:31- 5:00pm (sharp)
Nov 20	End of 1 st Trimester
Nov 21/22/23	NO SCHOOL-Thanksgiving Recess
Nov 26	NO SCHOOL-Records Day
Dec 3 – 14	Food Can Prix
Dec 3 – 7	Book Fair
Dec 4	6 th Gd. Band Winter Concert-7:00pm Maltby gym
Dec 7	PTO Movie Night
Dec 12	Orchestra Concert 7:00pm MIS – gym
Dec 14	6 th Gd. Choir Concert with BHS 7:00pm BCPA
Dec 20 – Jan 1	NO SCHOOL
Jan 2	SCHOOL RESUMES

PICTURE RETAKE DAY – November 14th

If your student did NOT have their picture taken at orientation, they must have it taken at retake day in order to have a picture in the yearbook.

If you want to return the packet you purchased at orientation and have a retake, please have your student bring their uncut packet on the 14th and give it to the photographer. The photographers are usually finished by lunchtime.

Greetings Maltby Parents,

Cold Weather...

Parents PLEASE make sure your Bullpup is coming to school with appropriate cold weather clothing! We are fast approaching the days when a hoodie is no longer warm enough for a 20 minute recess period!

5th Grade Camp...

We had another great year of 5th grade camp at Camp Ohiyesa. We had some sunny weather and thankfully no rain!! Congratulations to our 5th grade Bullpups for challenging themselves and representing Maltby in an excellent manner! Camp Ohiyesa is always very complimentary of our Bullpups. Thank you to our 5th grade staff and our parent chaperones for their time and efforts in making this a great experience for our 5th graders!!

In addition, our 5th grade sold over 2,700 pizza kits to help pay for Camp!! Every student who sold more than 10 kits will be getting a raffle ticket to draw for some gift basket prizes from Little Caesars!

Michigan vs Michigan State Boxtops Contest...

We had another exciting year in our Michigan vs MSU boxtop contest. Unlike the actual game, the Spartans soundly defeated the Wolverines in our contest!! True to our word the Office Staff wore the Green and White to represent the winners of our contest. Thank you to the Maltby PTO for all of their time and effort in counting all those little boxtops!!

Activity Afternoon...

We have our first Activity Afternoon of the year on November 16th from 3:30pm to 5pm. This is a fun opportunity for our student to stay after school and play basketball in the open gym or enjoy music and pizza in the cafeteria! We also have video games set up and our Student Leadership Committee always hosts fun activities in our upper gym! We would love to see all of our Bullpups attend!

Parent – Teacher Conferences...

Parent-teacher conferences are being scheduled by our individual teaching teams- you should be receiving information from your child's teacher about conference times and format; I know many parents have already confirmed conference appointment times with their homeroom teacher.

The Maltby Encore staff will be holding conferences in our Media Center on November 8th from 4 to 7.

Parent -Student Drop Off and Pick-Up...

Please remember to exercise caution as you drive in our parking lot and in the school zone as we have students who walk to school. Parents please obey the designated traffic patterns, especially as the mornings get darker and the weather gets more challenging. I know mornings are busy for most of us, but collectively we can never be too busy to work together for the safety of our students.

Parent Connect...

We are past the midway point of our 1st trimester. The end of the first trimester is November 20th. If you have not accessed Parent Connect yet we would encourage you to do so as this is an up-to-date snapshot of your student's progress in their classes.

All of our parents can follow their student's academic progress via Parent Connect. If do not have an account yet please visit: <http://bas.k12.mi.us/district.cfm?subpage=74405> to activate a Parent Connect account.

A handy feature to utilize in Parent Connect can be found under the "Email Notification" tab. Check the box for Assignments and Parent Connect will email you each time your child's assignments are updated.

Kind Regards,
Scott Brenner

Maltby PTO News

The PTO is a Parent Teacher Organization where all parents are automatically members. We will meet once a month in the morning. **Our next meeting is November 19, 2018 at 9:00am in the Maltby staff lounge.** We would love to have you join us!!

Maltby Activities that PTO is involved in:

Activity Afternoon Chaperones (chaperoning afterschool dance/activities) – Fall & Spring
Book fairs- Box Tops- –Campbell Soup Labels-Gleaners Canned Food Drive-Gardening/grounds-Spring Picture Day--
Staff Hospitality-Media Volunteers-Maltby Movie Nights-Individual Classroom programs and Field Day.

Please note that in lieu of selling products/merchandise, Maltby will be accepting a \$25.00/per family donation at registration for the 2018-19 school year to assist with all the above activities. Cash or checks can be made out to Maltby PTO...we will be able process credit cards.

Maltby PTO – Michelle Letendre-President, Nicki Jude-V.P., Christie LaHaie-Treasurer, Angel Hamilton-Secretary

SCHOOL TIMES



Maltby Start and End Times are as follows:
8:30 a.m. to 3:31 p.m.
Students will be allowed into the building at **8:22 a.m.**

Maltby 2018-19 DAILY SCHEDULE

- H.R.-8:30-8:36
- 1st -8:37-9:38
- 2nd-9:40-10:40
- 3rd-10:42-11:42
- Lunches
- A-11:45-12:25 (5th)
- B-12:05-12:45 (5th)
- C-12:25-1:05 (6th)
- D-12:45-1:25 (6th)
- 5th hr. -1:27-2:27
- 6th hr. 2:29-3:31

Notes Are Appreciated

If your student is coming to school late due to an appointment or is not feeling well, please call the attendance line at 810 299-3688. If we don't hear from you and your student is NOT in school, our automated attendance calls go out to parents by **10:30 am, Monday thru Friday.**

If you are picking your child up early, please send a note in with them. The office and your child's teacher is then informed of any changes in your child's schedule.

Please be sure to discuss your pick up plans with your student **before** they leave for school. Writing it in your child's planner is also a great idea, as they sometimes forget their plans by the end of the day. This helps cut down on the amount of calls we receive at the end of the day regarding pick up plans.

If an unexpected change of plans does arise, please call before 3:20, as that is

PARENT CONNECT

Be sure to sign up/log in to your PC account. Go to the Maltby's website and click on Grades Icon, then click on the Parent Connect and follow instructions. Click on Enter Parent Login Info, then Need Login Info if you have forgotten your password or need to sign up. You will then enter your email address. Your password and login information will be emailed to you. If you experience difficulties, please email PC@brightonk12.com.

Medical

Head Lice Reminder...

Please make it a habit to check your child's head/hair weekly for signs of head lice. Nits (eggs) are more easily found than live adult lice. The nits are firmly glued to the hair shaft and must be pulled off with fingernails-they cannot be flicked off like dandruff. The color of the nits varies-old empty nit casings appear white and are usually ½ inch and further from the scalp. Darker nits close to the scalp are viable. Look behind the ears, at the temples and the nape of the neck.

A live louse is the shape and size of a sesame seed. They are light brown, move quickly and are often hard to see. If you find evidence of lice, call your doctor for advice on the best over the counter treatment to use. The CDC website has very good information on the detection and treatment of lice.

We very much appreciate a phone call when you discover that your child has lice.

TIP: Although direct head to head contact is the most common mode of transmission-try putting your child's coat, hat and backpack in the dryer after school for 20 minutes.

IMPORTANT INFORMATION FOR PARENTS CALLING IN SICK STUDENTS

The Livingston County Health Dept. relies on the public schools to accurately report trends in illness in our county. All schools submit a weekly Communicable Disease Report to the Health Dept. We report "numbers" of students with:

- Apparent flu: body aches, sore throat, generalized aching in the back or limbs.
- Viral gastroenteritis: diarrhea/vomiting without respiratory symptoms
- Strep throat
- Asthma
- Head lice
- Pink Eye

Please keep your child home if they are running a fever over 100.3 degrees, vomiting or have diarrhea, are non-stop coughing, have untreated head lice or have red draining eyes. If you have a child with symptoms that appear to be potentially contagious (ie; rash/lesions) but a medical professional has deemed it safe for your child to return to school, please send in a doctor's note to the main office to prevent any concern. When leaving a message on the attendance line at school, please give specific information as why your child is absent.

DID YOU ORDER A YEARBOOK?

Yearbooks **MUST** be ordered online.....if you haven't already done so, please visit YearbookOrderCenter.com. Your order number is 3719. Cost is \$30.00, but will go up to \$35 on March 25th.

If you can't remember if you ordered a yearbook, please go to the same sight and double click on New Order, type in the order number 3719 and then click Review Existing Order.

LABEL STUDENT'S PERSONAL ITEMS

We cannot stress enough the importance of having your student's personal items labeled with permanent marker. Jackets, lunchboxes pencil boxes, hats, and anything else your student could possibly lose at Maltby needs to be marked. Our Lost and Found bin is already filling up and this is only the fourth week of school. If there is a name on an item, we do our best to get it back to the student.

Health Information

Written authorization from a physician is required before school staff can dispense ANY medication (over the counter, homeopathic or prescription) to your son/daughter at school. Instructions must be specific for medication, dosage, time to administer and for "as needed" meds, the frequency and circumstances under which to administer the medication. Medication must be provided in the original prescription or manufacturer's container. Parents can come and administer medication anytime to their student.

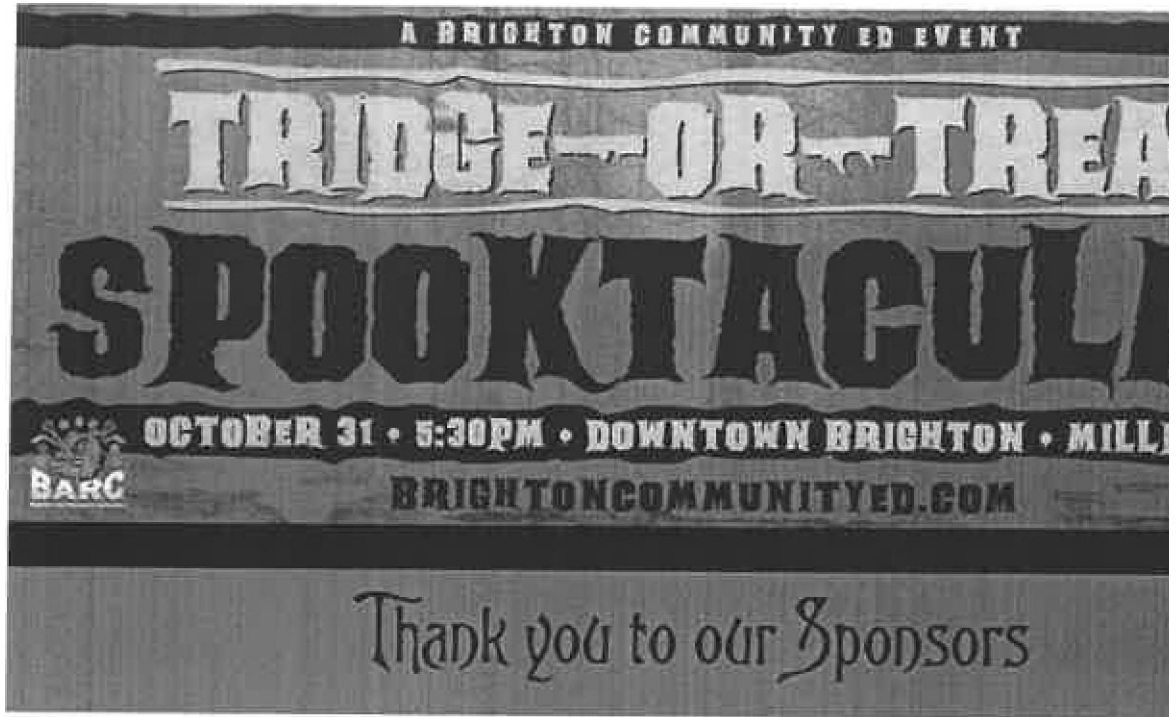
Attendance & Office Procedures

If your student is going to be absent from school please use our convenient twenty-four hour absence call-in line **(810) 299-3688**.

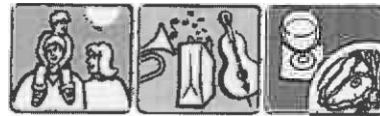
- Please obtain a doctor's note to receive a medical "M" code for attendance.
- Please call when your student will be coming in late.
- You must call in each day that your child is absent.
- Please call no later than 9:00 a.m. on the day of the absence.

- Students arriving late to school **must** report to the office to sign in.
- Please send in a note for early dismissal and have it signed by office personnel.
- **We will only allow students to be signed out by people who are listed on the emergency card.**
- We will not release your child to anyone that is not listed on the emergency card unless advance notice is received from the parent (including older siblings).

Our mission, in collaboration with parents and the community is to provide a developmentally appropriate transition to middle school for fifth and sixth grade learners. We promote independence, along with social, emotional, and academic success in a safe, nurturing environment.



Cooper einl<9



Downtown Brighton

BOU N s



binkōbabs