

The Paw Print



Greetings Maltby Parents,

Thank you and congratulations to our 6th grade Music students and Mrs. Shourds for some excellent concerts last week at the downtown amphitheater! It was wonderful to see the students having an opportunity to showcase their hard work!

We are asking that ALL of our Maltby families complete our **BAS Educational Choice Survey** for next school year- the survey closes tonight and provides us with essential information for planning next year. Here is the survey link:
<https://forms.gle/LuQffzyHoaYtAzJWA>

COVID Information...

- *Students with pending COVID-19 tests should stay home until test results are available.*
- *It is also recommended that students with in-home family members or close contacts that have tests pending stay home as a precaution until test results are available.*
- *All students sent home with possible COVID-19 symptoms or students that are reported as having a test pending are still required to submit a physician's note or negative test result copy prior to return to school.*
- *** The Livingston County Health Department has changed our required quarantine days back to 10**

This week at Maltby, we had one instance of school-related quarantines. If you have any questions regarding COVID-19, please feel free to visit our district's COVID-19 transparency site at <https://www.brightonk12.com/Page/8729>"

**** Some students may be under precautionary quarantines that are unrelated.**

M Step...

Our 5th graders are in the midst of their M Step testing and have completed Math and Science assessments. They will be taking additional assessments in ELA and Social Studies next week. 6th grade M Step testing in ELA and Math begins on May 4th.

Scheduling for Current 5th Grade...

Please make sure your current 5th grader has selected their Year-Long Encore choice for next year if you have not yet done so!

How to select your Year Long Encore for 2021-2022 school year:

- Go to the Brighton Area Schools website
- At the top of the page go to "Select a School" and choose Maltby Intermediate
- Once you are on the Maltby website, scroll down until you see the brownish column on your left.
- Please select "Current 5th Graders (Rising 6th Graders) Year Long Encore Selection Sheet"
- A Google form will appear that gives you a brief summary of the 4 classes being offered
- Once you and your child have decided which year-long encore is the best fit, please fill in each section of the form and press submit at the bottom of the form

*If you have any questions please contact Mrs. Anderson at: andersj@brightonk12.com

Enhanced Wednesday Information...

Our students and teachers did a great job on the Enhanced Wednesday format- thank you to our Maltby parents for the support you give the students at home! Please encourage your Maltby Bullpup to attend the Live Encore sessions in the afternoon for our remaining Enhanced Virtual Wednesdays!

Reproductive Health for 6th Graders...

We are in process of finalizing plans to present Reproductive Health information to our 6th grade students that missed it last year due to the COVID shut down and anticipate we will be presenting that information in May- thank you for your patience and stay tuned for more details.

Yearbooks!!!...

Our Maltby Yearbook link is live and ready - see the information in this newsletter to get yours ordered!

Small Town Big Hearts Initiative...

We at Maltby are proud to be a part of the Small Town Big Hearts Initiative to support our local community! Please see the detailed section in this newsletter for a description of activities.

Parking Lot...

Parents please remember that left turns out of our lot are not permitted except for busses. We have had a few instances of parents ignoring our signs and waiting to turn left onto Bauer Road which has caused significant back up in the exit line- thank you.

Kind Regards,

Mr. Brenner
Mr. Aten

Dates To Remember

Apr 16	Wear Be You, Be Here. Belong Shirt
Apr 19	PTO Meeting
Apr 22	Hat Day
Apr 23	Wear Be You, Be Here. Belong Shirt
Apr 29	Wear Brighton Gear
Apr 30	Wear Be You, Be Here. Belong Shirt
May 6	Career Day
May 7	Wear Be You, Be Here. Belong Shirt
May 17	PTO Meeting
May 24	Band Concert
May 31	NO SCHOOL
June 2	Face to Face (not virtual)
June 9	Face to Face (not virtual)
June 11	Last Day – ½ day



D

Determination

O

Optimism

G

Generosity

S

Solidarity



The PTO is a parent teacher organization where all Maltby parents are members. We welcome your ideas and participation!

The Maltby auction was a phenomenal success - raising almost **\$8,500** for the Maltby PTO! **Thank you** to everyone that bid on the auction items. Maltby PTO would also like to recognize the parents, staff and businesses that contributed items for donation and helped organize the classroom baskets. Finally, an *enormous* thank you to our auction committee: Deanne Farrell and Christina Kafkakis.

Following spring break, the Maltby PTO Staff Appreciation committee provided pre-packaged snacks for Maltby staff as a welcome back treat. Maltby parents, we appreciate your donations and support!

The Maltby PTO has open board and committee chair positions for the 2021/22 school year. Elections for next year occur next month (May) at our last PTO meeting. Please contact Jennifer Marks at jennifermarks04@gmail.com for more information.

We have begun planning for our year end events. **Please join us at our next meeting April 19, 9 am at Maltby** to learn more and get involved!

Future meeting date: May 17

Jennifer Marks – President; Ginger Timney – V.P.; Angel Hamilton – Treasurer; Katie Tierney – Secretary



Maltby 2020/2021 - DAILY SCHEDULE: First bell at 8:26am, Tardy bell 8:40am, End of day 3:27pm

H.R.-8:40-8:44

1st -8:45-9:40

2nd -9:45-10:40

3rd -10:45-11:40

Lunches

A-11:45-12:20 (5th)

B-12:15-12:50 (5th)

C-12:45-1:20 (6th)

D-1:15-1:50 (6th)

5th -1:35-2:30

6th -2:35-3:27



If you have moved or have a change to your phone number or email address, please contact the office as soon as possible or update in Parent Connect!

Thank you!

YEARBOOK

YEARBOOKS ON SALE
ORDER TODAY

YEARBOOKORDERCENTER.COM

Keep your order number handy when you log on.

Maltby Intermediate School

3719

Cell Phones at MIS

In accordance with the Brighton Area Schools Cell Phone policy, our students at MIS are permitted to bring their cell phones to school. We recognize the necessity and importance of family communication, but unfortunately ringing cell phones and the temptations of new games, cameras, and the technology that accompanies cell phones can present a distraction

for your student and/or others in their classes.

Therefore at MIS our students:

Turn off cell phones at the beginning of the day and place them in their backpack. Refrain from texting friends or parents during school hours.

Utilize the main office phone to contact parents in the event of an emergency.

We have had great success in keeping Maltby

a distraction-free learning environment by following these procedures. In addition, we ask that parents please refrain from calling or texting their student during the school day. Any messages of an emergency nature can be relayed to students through the front office at 810 299-3600. **Please call before 3:05pm to ensure your child receives the message!**

Thank you!



The McKinney Vento Act

The Brighton Area Schools is part of a consortium to serve students in temporary living situations that provides financial support for educational needs, referral for housing, clothing and other needs, general support and technical assistance. To ensure compliance with federal law, all school staff must help identify student living in the following situations: emergency shelters/transitional housing, motels/hotels, car, parks or public spaces, shared housing due to a loss of housing or economic hardship, or living temporarily with non-parent or guardian.

The district's homeless liaison is Starr Acromite and each building has trained staff members to assist in the endeavor. Our consortium contact at the Livingston Educational Service Agency is Candice Uyttendaele.

Please contact your building principal or Starr Acromite at 810-299-4040 for information/assistance.

Masks are a requirement this school year, so please make sure your student comes to school wearing one!



Just a Reminder...

- 5/31: NO SCHOOL
- 6/1: 'A'
- 6/2: 'B' (face-to-face)
- 6/3: 'A'
- 6/4: 'B'
- 6/7: 'A'
- 6/8: 'B'
- 6/9: 'A' (face-to-face)
- 6/10: 'B'
- 6/11: LAST DAY...
1/2 DAY AM!



Office Reminders

- You can deposit money into lunch account(s) via Parent Connect. For questions regarding your child's lunch account, please email gandola@brightonk12.com or call (810) 299-4175.
- Parents may drop off medication (in the original bottle) in the office along with the medication form signed by the doctor by appointment. Please do not send the medication in with your student.
- Maltby and Brighton spirit wear is available to purchase from Ivory Vines (www.ivoryvines.com) or Kensington Valley Varsity (www.kvarsity.com).
- Masks are required and must be worn while at school. Please work with your student to make sure they are prepared and know what to do and what not to do with their masks.

BAS Superintendent's Newsletter

Brighton Area Schools 2020-21 Calendar

Full Student days

No School for Students

Virtual Wednesday (Semester 1)*

April 2021

Sun	Mon	Tues	Wed	Thurs	Fri	Sat	
				1	2	3	3/29-4/2 Spring Break
4	5	6	7	8	9	10	4/5 No School (Records Day/Comp)
11	12	13	14	15	16	17	4/9 End of quarter 3 (7-12)
18	19	20	21	22	23	24	
25	26	27	28	29	30		

May 2021

Sun	Mon	Tues	Wed	Thurs	Fri	Sat	
						1	
2	3	4	5	6	7	8	
9	10	11	12	13	14	15	
16	17	18	19	20	21	22	
23	24	25	26	27	28	29	5/28 Last Day for BHS Seniors
30	31						5/31 No School - Memorial Day

June 2021

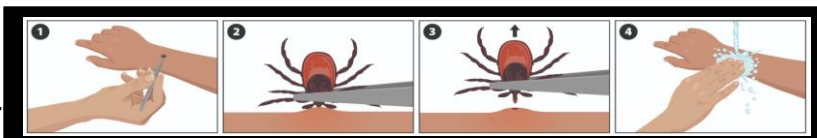
Sun	Mon	Tues	Wed	Thurs	Fri	Sat	
6	7	8	9	10	11	12	6/11 Half Day - Student Last Day**
13	14	15	16	17	18	19	
20	21	22	23	24	25	26	
27	28	29	30				

*Virtual Wednesdays will continue to be reviewed and discussed monthly. At this time, please plan for virtual Wednesdays for any 5 day week.

TICKS ARE HERE

Check your kids thoroughly for ticks on their clothing and skin after playing outdoors. Common places for ticks to nestle; under the arms, ears, inside the belly button, back of the neck, in and around hair, between the legs, around the waist. If a tick is found, remove it as soon as possible. See www.cdc.gov/ticks/removing_a_tick.html. If your child develops a rash or fever, seek medical attention.

PLEASE BE SURE TO CHECK YOUR CHILDREN DAILY...ticks are very prevalent this year.



****NOTICE ****FIRST AGENCY, INC.****NOTICE**

Student Insurance is available online. If you are interested in enrolling, please follow the instructions below. Thank you!

How to Find the Brochure PDF and/or enroll online:

Go to our home page at www.1stAgency.com

From there, go to "Find Your School"; select the state; hit "Go"

A Word From The Special Education Department

Brighton Area Schools provides a variety of learning options for eligible students with disabilities by offering a continuum of educational environments, from generalized education class placements with special services to pull out programs in specialized classrooms. Special education programs and services are operated and administered in the local school buildings in collaboration with the Livingston Educational Service Agency.

If staff members or parents believe a student is struggling academically, socially, or behaviorally, a referral should be made to the C.A.R.E. Team through his/her general education teacher or the school administration.

Attendance & Office Procedures



If your student is going to be absent from school please use our convenient twenty-four hour absence call-in line **(810) 299-3688**.

- Please obtain a doctor's note to receive a medically excused absence.
- Please call when your student will be coming in late.
- You must call in each day that your child is absent.
- Please call no later than 9:00 a.m. on the day of the absence.
- Students arriving late to school should be dropped off at the flag pole door.
- **Do not** drive off until your student has rang the doorbell and is **inside** the building.
- Students arriving late to school **must** report to the office to sign in. **Parents cannot come inside.**
- Please send in a note for early dismissal and have it signed by office personnel.
- Please call when you arrive and we will send your student out. You do not need to come in.
- **We will only allow students to be signed out by people who are listed on the emergency card.**
- If you need an in-person meeting with a Principal or with staff, we ask that you please call and make an appointment.

Please join us for a Community

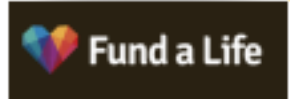
FOOD DRIVE FOR BOUNTIFUL HARVEST

**SUNDAY, APRIL 25, 2021
BRIGHTON LIGHT HOUSE
142 BRIGHTON LAKE ROAD
10:00 AM - 2:00 PM**

We appreciate our gracious partners!



**BRIGHTON
LIGHT
HOUSE**



Music, art, prizes, treats, and more!

Small Town, Big Hearts ---- April 6th- May 7th ----- *Be here. Be You. Belong.*

We are so excited to announce that we have been asked to be a part of Brighton Small Town, Big Hearts Initiative from the DDA. Please join in on the fun and support our community.

All proceeds go to the Small Town, Big Hearts campaign and BHS Senior Survivor.

Welcome letter from City of Brighton

[Click Here](#)

Campaign Activities

"Be Here, Be You. Belong" T-shirts

[Click here](#)

BAS Staff wear JEANS ALL MONTH LONG, EVERYDAY. \$20 donation -EMPLOYEES ONLY

[CLICK HERE TO SIGN UP TO WEAR JEANS ALL MONTH](#)

Patron Support

Every **Tuesday** consider shopping at any of our local businesses within the Brighton community.

Every **Wednesday** buy a gift card from any local Brighton business.

Every **Thursday** enjoy one of our local restaurants by dining in or ordering carry out.

Brighton Area School & Community Spirit Days

April 8th "Wear Your **Brighton Attire**"

April 9th "Wear your Be You. Be here. Belong T-Shirts"

April 15th "**Disney/Marvel Day**"

April 16th "Wear your Be You. Be here. Belong T-Shirts"

April 22nd "**Hat Day**"

April 23rd "Wear your Be You. Be here. Belong T-Shirts"

April 29th "**BRIGHTON GEAR**"

April 30th Wear your Be You. Be here. Belong T-Shirts"

May 6th "**Career Day**"

May 7th "Wear your Be You. Be here. Belong T-Shirts"

If you would like for your business to be highlighted to shop LOCAL on social media please fill out this form and we will highlight your business as well. Our commitment is to all of Brighton!

[Click Here](#)

We encourage you to join or check out our Social Media Pages to see our Small Town, Big Hearts!

[Click here](#)



Saturday, April 17 from 1:00-4:00pm
 at 242 Community Church
 7526 Grand River Rd, Brighton, MI 48114

Livingston county residents, we invite you to join us for our annual Community Connect. This event will focus on providing basic needs such as personal care items, pantry staples, household paper items like toilet paper, laundry detergent and a sack lunch. Community resources will also be provided electronically to guests. This is an alternate version of our annual Community Connect. Rain or shine

Community Connect will take place in drive through format.

No reservation required; we can serve up to 700 guests.

volunteers needed. Sign up: volunteerlivingston.com


[Facebook.com/LivCountyCommunityConnect12](https://www.facebook.com/LivCountyCommunityConnect12)



Livingston County
Homeless Connections of Care Council



SCHOOL BUS



Livingston
**EDUCATIONAL
SERVICE** Agency

BE A BUS DRIVER TODAY!

Quick Facts:

- 1) When training with one of our certified trainers: \$13.66/hr.
- 2) Once training is completed, substitute bus drivers: \$17.87/hr.
- 3) Sign on bonus of \$250 now, \$250 after 6 months

Apply NOW!

BEABUSDRIIVER.ORG

Or give us a call for assistance!
(810)299-3890; anyone who answers the phone can help!

4817243-001 ©2009 PAPER MASCOT GROUP, INC. SCRANTON, PA 18501



**FALL 2021 FOOTBALL REGISTRATION
OPENS **FEBRUARY 1st FOR ALL** RETURNING FOOTBALL
PLAYERS AND CHEERLEADERS!**

REGISTRATION CLOSSES **JUNE 1st!
SIGN UP USING THE LINK BELOW!**

REGISTER: 2021 BBFC FOOTBALL AND CHEER REGISTRATION

April 2021

Maltby Intermediate

Lunch

MONDAY	TUESDAY	WEDNESDAY	THURSDAY	FRIDAY
			1 Spring Break	2 Spring Break
5 No School Records Day	6 • Big Daddy Cheese Pizza with • Grape Tomato and • Sliced Apples	7 • Chicken Sandwich with • Broccoli Floret • Ranch Lite Dressing cup and Assorted Fruit	8 • Apple flavored Eggo Mini pancakes • Turkey Sausage Breakfast Link with • Hash Browns and • Sliced Apples	9 • Hot Dog on a Whole Grain Bun with • Cucumber and • Valencia Oranges
12 • Big Daddy Cheese Pizza with • Grape Tomato and • Sliced Apples	13 • Mini Corn Dogs with • Broccoli Floret • Ranch Lite Dressing cup and Assorted Fruit	14 Online School	15 • Eggo Mini Maple Waffle with • Turkey Sausage Breakfast Link and • Hash Browns and • Sliced Apples	16 • Chicken Bites • Pretzel Rod with • Cucumber and • Valencia Oranges
19 • Big Daddy Cheese Pizza with • Grape Tomato and • Sliced Apples	20 • Cheese Crunchers with • Broccoli Floret • Ranch Lite Dressing cup and Assorted Fruit	21 Online School	22 • Mini Cinni • Turkey Sausage Breakfast Link with • Hash Browns and • Sliced Apples	23 • Whole Grain Bosco Cheese Breadstick with • Marinara Sauce and • Grape Tomato • Valencia Oranges
26 • Big Daddy Cheese Pizza with • Grape Tomato and • Sliced Apples	27 • Walking Taco with Reduced Fat Doritos with • Broccoli Floret • Ranch Lite Dressing cup and Assorted Fruit	28 Online School	29 • Apple flavored Eggo Mini pancakes with • Turkey Sausage Breakfast Link and • Hash Browns and • Sliced Apples	30 • Chicken Bites with • Pretzel Rod • Cucumber and • Valencia Oranges

Maltby Menu Prices: Student Breakfast \$2.00 , Student Lunch \$2.75 , Milk \$.50 , Adults Meals \$4.75

Ice -Cold Milk (included with all meals): Prairie Farms 1 % Chocolate Milk, Prairie Farms 1% White Milk, Prairie Farms Fat Free Milk

This institution is an equal opportunity provider. Layout & Design © Nutrislice, Inc. Printed on 3/2/2021 at 10:32 am .

For more information or for nutritional values, please visit:

[April 2021 Lunch Menu - Maltby Intermediate School](#)

For the 2020-21 Free & Reduced Application Packet, please visit:

<https://www.brightonk12.com/Page/7665>

May 2021

Maltby Intermediate
Lunch**MONDAY****TUESDAY****WEDNESDAY****THURSDAY****FRIDAY****3**

- Big Daddy Cheese Pizza with
- Grape Tomato and
- Sliced Apples

4

- Chicken Sandwich with
- Broccoli Floret
- Ranch Lite Dressing cup and
- Assorted Fruit

5

Online School

6

- Eggo Mini Maple Waffle
- Turkey Sausage Breakfast Link with
- Hash Browns and
- Sliced Apples

7

- Hot Dog on a Whole Grain Bun with and
- Baby Carrots
- Valencia Oranges

10

- Big Daddy Cheese Pizza with
- Grape Tomato and
- Sliced Apples

11

- Mac & Cheese with
- Broccoli Floret
- Ranch Lite Dressing cup and
- Assorted Fruit

12

Online School

13

- Mini Cinnis
- Turkey Sausage Breakfast Link with
- Sun Splash Juice Box and
- Sliced Apples

14

- Chicken Drumsticks
- Pretzel Rod with and
- Baby Carrots
- Valencia Oranges

17

- Big Daddy Cheese Pizza with
- Grape Tomato and
- Sliced Apples

18

- Chicken Sandwich with
- Broccoli Floret
- Ranch Lite Dressing cup and
- Assorted Fruit

19

Online School

20

- Apple flavored Eggo Mini pancakes
- Turkey Sausage Breakfast Link with
- Sun Splash Juice Box and
- Sliced Apples

21

- Hot Dog on a Whole Grain Bun with
- Baby Carrots and
- Valencia Oranges

24

- Big Daddy Cheese Pizza with
- Grape Tomato and
- Sliced Apples

25

- Mini Corn Dogs with
- Broccoli Floret
- Ranch Lite Dressing cup and
- Assorted Fruit

26

Online School

27

- Eggo Mini Maple Waffle with
- Turkey Sausage Breakfast Link and
- Sun Splash Juice Box and
- Sliced Apples

28

- Tyson Chicken Tenders
- Pretzel Rod with
- Baby Carrots and
- Valencia Oranges

31

Memorial Day - No School

Maltby Menu Prices: Student Breakfast \$2.00 , Student Lunch \$2.75 , Milk \$.50 , Adults Meals \$4.75

Ice -Cold Milk (included with all meals): Prairie Farms 1% Chocolate Milk, Prairie Farms 1% White Milk, Prairie Farms Fat Free Milk

This institution is an equal opportunity provider. Layout & Design © Nutrislice, Inc. Printed on 4/7/2021 at 9:31 am .

For more information or for nutritional values, please visit:

[May 2021 Lunch Menu - Maltby Intermediate School](#)

For the 2020-21 Free & Reduced Application Packet, please visit:

<https://www.brightonk12.com/Page/7665>

Mask Up Maltby

For the 2020-2021 school year, all Maltby students and staff will be required to wear a face covering while in the classroom and in shared areas of Maltby. **It must be over the mouth and nose to be used effectively.** Below are some considerations for Maltby families to think about as we prepare to start school under these unusual circumstances.

1. Start talking to your student about wearing a mask.

- i. Explain why they are required at school
- ii. Answer your students questions with confidence and encouragement
- iii. Remind them this is not just about them, all students and staff will be wearing masks!

2. Ways to help your student wear a mask-

- i. Ask your child to wear it at home and in other social situations. Get used to taking it off and putting it back on efficiently.
- ii. Encourage your student to personalize their mask or pick out their own.

3. Students will be required to wear masks at school.

a. The Back to School Roadmap states that in Phase 4 students will be required to wear mask in their classrooms and shared spaces within the school building

- i. If your student refuses to wear a mask at school:
 1. A disposable mask will be offered to the student and a warning given.
 2. The second time a student is found without a face covering, the student's parents will be notified and the student will be sent home.
 3. If the behavior continues, disciplinary action will be taken and a parent meeting will take place.
- ii. The only times students will not be required to wear masks is when they are eating/drinking or at recess/outside with their class cohort.

Here is a helpful article about masks and kids:

<https://www.healthline.com/health-news/from-toddlers-to-teens-how-to-talk-to-kids-about-wearing-masks>

ALL 6TH GRADE PARENTS/GUARDIANS

For all students entering the 7th grade: it is required by law that their immunization status be reported to our local health dept. With that being said, all children who attend school in Michigan are required by state law to be fully immunized to their standards. Please review your child's immunization status with their Physician prior to the start of the 2021–2022 school year to ensure compliance. Note that the Meningococcal and Tdap vaccinations are required for children 11 years of age or older upon entry into 7th grade. If you have a personal objection to immunizations, please contact the Livingston County Health Department **as soon as possible** to set up an appointment to obtain a certified immunization waiver: (517) 546–9850.

If your student is not fully immunized in accordance with the Michigan law OR does not have a certified immunization waiver on file by the first day of the 2021–22 school year, **THEY WILL BE EXCLUDED FROM ATTENDING SCRANTON MIDDLE SCHOOL** until compliance is met. Please feel free to contact me with any questions.

Best Regards,

Cadie Godfrey, MSN, RN, FNP-C – BAS District Nurse
(810) 299-4149

Linda Barrett, RN – BAS District Nurse
(810) 299-3677





LIVINGSTON COUNTY
Health Department

FOR IMMEDIATE RELEASE

New Drive-Thru COVID-19 Testing Site in Brighton to Provide Saliva Testing

HOWELL, Michigan. - (March 19, 2021) The Livingston County Health Department (LCHD) is excited to announce with LynxDx and the 2|42 Community Center, a new drive-thru COVID-19 testing site in Brighton opening today, Friday, March 19. This new site offers contactless saliva testing and is open to all Michigan residents with or without insurance. COVID-19 continues to spread in the community, and more recently, the B117 variant was discovered in Livingston County. Access to COVID-19 testing is an important tool in helping identify cases and prevent further community spread of COVID-19.

“This new testing site will benefit our entire community,” says Juan Marquez, MD, MPH, medical director at LCHD. “We’re grateful to partner with Lynx and the 2|42 Community Center in bringing more accessible, faster testing to our county. Additionally, we know there has been a lot of interest in saliva testing. We’re excited to bring this no-contact saliva testing option to our community members.”

Anyone with COVID-19 symptoms should immediately seek testing. If you were potentially exposed but do not have symptoms, LCHD recommends self-quarantine and waiting at least 5 or more days before testing. If you are in quarantine and develop symptoms, testing is recommended. Symptoms may take up to 14 days after exposure to appear, and individuals are considered contagious two days before symptoms appear.

Anyone getting tested should stay away from others until they get their results. Anyone with symptoms should stay home unless they are getting medical care or testing and limit all contact with others in their household.

Testing Site Information

The testing site opens Friday, March 19. Testing will be available on Mondays and Fridays from 8:00 am to 6:00 pm in the parking lot at the back of 2|42 Community Center/Church, 7526 Grand River Ave., Brighton, MI 48114. The site is drive-thru only. Tests will be contactless and saliva-based (no nasal swabs required). Results will be sent to your email or phone within 48 hours.

Who Can Get Tested?

Testing is open to all Michigan residents. You do not need to have symptoms to get tested. You do not need a doctor’s note or order to get tested. Pre-registration is required. Register for a test at <https://lynxdx.health/register>.

Testing is available with or without insurance. Please bring identification when you arrive for testing. If you have health insurance, please bring your card. There should be no out-of-pocket fees for individuals needing testing. Many insurance providers have already waived copays for COVID-19 testing. If you do not have insurance, testing staff will ask for your social security number to verify that you do not have insurance. Once you arrive on-site for testing, LynxDx will verify your identity and other information. They will then provide a self-testing kit to collect your saliva sample.

About LynxDx

LynxDx, Inc. is a privately held diagnostics company headquartered in Ann Arbor, which spun out of the University of Michigan. LynxDx currently operates a high-complexity molecular diagnostics laboratory, and is focused on commercializing diagnostic tools, including a qPCR assay for COVID-19 and a urine assay to aid in diagnosing prostate cancer (MyProstateScore).

CONTACT:

Natasha Radke, Public Information Officer
Livingston County Health Department
(517) 546-9850
nradke@livgov.com
www.lchd.org

<https://www.facebook.com/myLCHD>

[Click here to view the Livingston County Health Department Return to School Toolkit](#)

Assessing Close Contacts in Schools



What is a Close Contact in an Educational Setting?

*A **close contact** is most often someone that has been within 6 feet* of a contagious person for at least 15 minutes of cumulative time.*

Classroom



Classmates would be considered close contacts of a contagious individual if their desk is within 6 feet*. This is typically desks within two rows on all sides of the contagious individual.

If a teacher is contagious and spends time with a student providing one-on-one instruction or walks throughout the classroom during instruction, students may be considered close contacts.

Teachers should be consulted for classroom close contacts in order to assess distance, contact duration, and absences. Seating charts are recommended to help identify close contacts.

Sports

During practice or games, individuals within 6 feet* of the contagious individual are considered close contacts. This includes individuals from opposing teams. The type of sport and player position are additionally considered when assessing close contacts.



Lunch and Snack Time



If students/staff are sitting within 6 feet* of a contagious individual, they are considered close contacts. Lunch is a higher risk activity, as face coverings cannot be worn.

Outdoor Mask Breaks and Recess

During outdoor mask breaks and recess, if individuals are within 6 feet* of the contagious individual, they are considered a close contact, unless interactions are consistently kept brief and no common items are shared. Mask breaks are a higher risk activity, as masks are not worn.



Electives



In electives, such as music class, close contacts may need to be assessed on a case-by-case basis. In general, close contacts are individuals within 6 feet* of a contagious individual.

Transportation



Bus riders are considered close contacts of a contagious individual if they sit within 6 feet*. This includes bus riders, as well as the bus driver. It is advised that seating charts are employed to aid in the assessments of close contacts.

Bus drivers should be consulted for bus close contacts in order to assess contact duration and absences.

Special Considerations

Environmental and activity-related factors may play a role in determining close contacts. When assessing close contacts in schools, please consider:

- The proximity of the case to contacts
- The duration of exposure
- The symptoms of the case
- Type of interaction or activity



- * LCHD may determine that distances beyond 6 feet can still result in high-risk exposures based on other considerations and circumstances in each particular case.



Please contact the Livingston County Health Department for advice on close contact identification in schools.
517-546-9850

There is now a web-based COVID-19 self-reporting form for school staff members and parents/guardians to use on the Livingston County Health Department site!

The hope is that the use of this form will help expedite case investigation and confirmation and also decrease call volume for case-related matters.

[COVID-19 Self-Reporting Form Livingston County](#)

Appendix AB

COVID-19 STAFF AND STUDENT AT-HOME SCREENING CHECKLIST FOR SCHOOLS



Monitor your health each day prior to arriving at school or work. If you have symptoms of COVID-19, stay home, contact the school, and consult your medical provider.

An electronic version of this screening form can be filled out at the MI Symptoms App: <https://bit.ly/2Xl5oSA>

01 Have you had any of these symptoms?

Check any current symptoms that developed within the last two weeks.

- Chills
- Loss of taste or smell
- Sore throat
- Shortness of breath
- Diarrhea
- Congestion or Runny Nose
- Cough
- Headache
- Nausea or vomiting
- Muscle aches without recognizable cause

02 Do you have a fever or feel feverish?

- Yes If yes, please enter your body temperature °F
- No A fever is a temperature above 100.4°F

03 Have you had close contact with someone who was diagnosed with COVID-19 in the last two weeks?

- Yes
- No

04 Have you been diagnosed with COVID-19 in the past two weeks?

- Yes
- No

IF YOU ANSWER **NO** TO **ALL** OF THE QUESTIONS ABOVE, YOU HAVE PASSED THE HEALTH SCREENING

IF YOU ANSWER **YES** TO **ANY** OF THE QUESTIONS ABOVE:

- Stay home!
- Notify the school
- Consult your medical provider

For more information, visit www.lchd.org. Questions? Call the COVID-19 hotline at 517-546-9850.