

The Paw Print



Greetings Maltby Parents,

We are closing in on the end of the school year! As I begin to wrap up my 26th year in education I am amazed at what we have accomplished this year and grateful to have had the opportunity to work with these students each day. Thank you to this outstanding Maltby Staff, our incredible families, and our BAS Central Office who have worked tirelessly to make this year great for BAS kids! A special thank you to Jennifer Marks and our Maltby PTO for working continuously to enhance our Maltby experience for our Bullpups! Thanks to the PTO we had an amazing BMX assembly last Thursday! The students loved it and got to see some incredible bike tricks. We also had an amazing (and first-ever) 5th and 6th grade Band concert last week in our parking lot! Not to be outdone- our Maltby 5th Grade Choir students will be performing downtown at the Amp on June 7th and 8th at 6 pm! Please take a minute and speak with your Bullpup about finishing the year strong academically and behaviorally. We want all of our Bullpups to finish the 20/21 school year at their personal best!

COVID Information...

- *Students with pending COVID-19 tests should stay home until test results are available.*
- *It is also recommended that students with in-home family members or close contacts that have tests pending stay home as a precaution until test results are available.*
- *Ill students sent home with possible COVID-19 symptoms or students that are reported as having a test pending are still required to submit a physician's note or negative test result copy prior to return to school.*
- ** The Livingston County Health Department has changed our required quarantine days back to 10*

This week at Maltby, we had 0 instances of school-related quarantines this week. If you have any questions regarding COVID-19, please feel free to visit our district's COVID-19 transparency site at <https://www.brightonk12.com/Page/8729>

*** Some students may be under precautionary quarantines that are unrelated.*

June Tours for Incoming 5th Graders and BVA Incoming 5th and 6th Graders...

We are excited to announce our Maltby June Building Tour for our new Bullpups and incoming/ returning BVA students! During the week of June 21st families can sign up for their Bullpup to come in and have the chance to see their new school and do a self-guided tour/ scavenger hunt!

Students (with 1 accompanying adult please) can tour the building and collect a sticker at each major building area (cafeteria, Media Center, gymnasium, etc.)!!

1 hour time slots are available to tour the building on June 22nd - 25th. Please plan on wearing a face covering and using appropriate social distancing between families- thank you. We are looking forward to getting the chance to meet our new Bullpups as they "Step Up" to Maltby Intermediate!

Please use our Sign-Up Genius page to reserve a day and time for your tour:

<https://www.signupgenius.com/go/20F0F44AFAA2DA75-maltby2>

Can't make that week? Please do not panic!! We are planning on hosting our typical student orientation for 5th graders on August 23rd. Students can tour the building, see their classrooms, try their locker, and have their portrait taken for our Bullpup ID's and yearbook!!

Field Day...

Our Maltby Field Day will be held on June 10th. PTO has been working hard to plan a great half day for our Bullpups! Thank you to our parent volunteers- please note we *do not* allow parent drop in on Field Day- thank you.

6th Grade Farewell...

This year we are again holding our 6th grade "Send Off" during the last day of school at 10:00am. We will be recognizing students for academics and attendance at this informal event sponsored by our PTO!! Parents are welcome to attend- the event will be held outside, weather permitting. Parent attendance is certainly not required and our Send-Off will be informal and brief, but fun!! We are very proud of our 6th grade Bullpups! Thank you once again to the PTO!

Dress Code...

Parents this is the time of year that we ask your help in ensuring our dress code standards are met by students- this can be a challenge depending on what the clothing stores are selling in any given year and what the current fashion trends are! Parents please help us by looking to see that your student is dressed appropriately for the school day- thank you.

Parking Lot...

Just a gentle reminder, students are not permitted to walk in the parking lot themselves. Please meet your student on the sidewalk at pickup if you are parked in the middle of our lot. PLEASE DO NOT drop your student off in the parking lot at the corner near the handicap parking spots. We have seen several parents do this and the proper procedure if you do not wish to use the drop off lane is to park in the lot and walk your student to the sidewalk. We also ask that you please be patient and drive slow around our school- this is the time of year that many of our students who live close begin walking home again.

Kind Regards,

Mr. Brenner
Mr. Aten

Dates To Remember

June 2	Face to Face (not virtual)
June 9	Face to Face (not virtual)
June 9	Hot Dog Lunch
June 10	Field Day (face to face students)
June 10	Orchestra Concert
June 11	6 th gd Graduation
June 11	Last Day – ½ day Dismissal 12:20 pm

Just a Reminder...

5/31: NO SCHOOL

6/1: 'A'

6/2: 'B' (face-to-face)

6/3: 'A'

6/4: 'B'

6/7: 'A'

6/8: 'B'

6/9: 'A' (face-to-face)

6/10: 'B'

6/11: LAST DAY...

1/2 DAY AM!



BRIGHTON



The PTO is a parent teacher organization where all Maltby parents are members. We welcome your ideas and participation!

www.kennyprivetproductions.com

Thursday students enjoyed a high energy performance by Dialed Action Sports and their amazing bike team! This assembly was funded by the PTO - thank you parents for your contributions this year.

Please make note of the last Maltby school store day - **Friday June 4th**. A huge shout out to Ginger Timney for her effort and creativity in managing the school store this year!

Congratulations to the 2021/22 Maltby PTO board: President Liz Johnson, Vice President Kristin Cauchon, Treasurer Katie Tierney and Secretary Claire Reese.

The PTO would like to acknowledge local businesses that have generously agreed to provide services for field day. Please consider these businesses in your personal planning!



Cardio Drumming classes and personal training:

<https://www.facebook.com/marthasfit/>



<https://www.facebook.com/pages/category/Food-Truck/Kona-Ice-of-Brighton-2329581373758943/>



Upcoming Events: Hot Dog Lunch June 9th; Field Day June 10th; 6th Grade Graduation June 11th.

Jennifer Marks – President; Ginger Timney – V.P.; Angel Hamilton – Treasurer; Katie Tierney – Secretary



Maltby 2020/2021 - DAILY SCHEDULE: First bell at 8:26am, Tardy bell 8:40am, End of day 3:27pm

H.R.-8:40-8:44
1st -8:45-9:40
2nd -9:45-10:40
3rd -10:45-11:40

Lunches
A-11:45-12:20 (5th)
B-12:15-12:50 (5th)
C-12:45-1:20 (6th)
D-1:15-1:50 (6th)

5th -1:35-2:30
6th -2:35-3:27



ARE YOU MOVING OR NOT ATTENDING BAS SCHOOLS?

If you are moving before the end of the school year, PLEASE be sure to contact the office and your child's teacher. **We do have a check out procedure that includes making sure classroom and media center books are turned in.**

IF YOU ARE MOVING AT THE END OF THE SCHOOL YEAR, please contact the office as soon as possible at 810 299-3600.

If your child is NOT going to be attending Brighton Area Schools next year, please let us know that as well by calling the office at 810 299-3600.



SUNSCREEN

If you feel your child needs sunscreen on during the school day for any reason, please apply it before school. Please **DO NOT** send a bottle of sunscreen to school with your child. For additional sun protection, you may send a hat.



- Spots open in **all grades** for 21-22, no experience necessary
- We teach violin, viola, cello and bass
- Contact fernandezs@brightonk12.com

Cell Phones at MIS

In accordance with the Brighton Area Schools Cell Phone policy, our students at MIS are permitted to bring their cell phones to school. We recognize the necessity and importance of family communication, but unfortunately ringing cell phones and the temptations of new games, cameras, and the technology that accompanies cell phones can present a distraction

for your student and/or others in their classes.

Therefore at MIS our students:
Turn off cell phones at the beginning of the day and place them in their backpack. Refrain from texting friends or parents during school hours.
Utilize the main office phone to contact parents in the event of an emergency.

We have had great success in keeping Maltby

a distraction-free learning environment by following these procedures. In addition, we ask that parents please refrain from calling or texting their student during the school day. Any messages of an emergency nature can be relayed to students through the front office at 810 299-3600. **Please call before 3:05pm to ensure your child receives the message!**

Thank you!



The McKinney Vento Act

The Brighton Area Schools is part of a consortium to serve students in temporary living situations that provides financial support for educational needs, referral for housing, clothing and other needs, general support and technical assistance. To ensure compliance with federal law, all school staff must help identify student living in the following situations: emergency shelters/transitional housing, motels/hotels, car, parks or public spaces, shared housing due to a loss of housing or economic hardship, or living temporarily with non-parent or guardian.

The district's homeless liaison is Starr Acromite and each building has trained staff members to assist in the endeavor. Our consortium contact at the Livingston Educational Service Agency is Candice Uyttendaele.

Please contact your building principal or Starr Acromite at 810-299-4040 for information/assistance.

Masks are a requirement this school year, so please make sure your student comes to school wearing one!



BRIGHTON BULLDOGS

We are...



Determination Optimism Generosity Solidarity

"LEARNING FOR LIFE"

D

Determination

O

Optimism

G

Generosity

S

Solidarity



Bottle Babies Rescue Fundraiser

* 501(c)(3) non profit rescue



Turn in to Ms. Bouhana's room!

Suggested donations

- blankets
- towels
- sheets
- pillow cases
- kiddie pools
- heating pads
- puppy pads
- baby gates
- paper towels
- disposable aluminum pans
- laundry detergent
- bleach

Donations to school by June 4, 2021



BAS Superintendent's Newsletter

Brighton Area Schools 2020-21 Calendar

Full Student days No School for Students Virtual Wednesday (Semester 1)*

June 2021

Sun	Mon	Tues	Wed	Thurs	Fri	Sat.
		1	2	3	4	5
6	7	8	9	10	11	12
13	14	15	16	17	18	19
20	21	22	23	24	25	26
27	28	29	30			

6/11 Half Day - Student Last Day**

**Last day could be altered if required by the State due to snow days

*Virtual Wednesdays will continue to be reviewed and discussed monthly. At this time, please plan for virtual Wednesdays for any 5 day week.

Brighton Area Schools 2021-22 Calendar

Full Student days No School for Students

September 2021

Sun	Mon	Tues	Wed	Thurs	Fri	Sat.
			1	2	3	4
5	6	7	8	9	10	11
12	13	14	15	16	17	18
19	20	21	22	23	24	25
26	27	28	29	30		

9/6 No School - Labor Day
9/7 First Day of School

October 2021

Sun	Mon	Tues	Wed	Thurs	Fri	Sat.
					1	2
3	4	5	6	7	8	9
10	11	12	13	14	15	16
17	18	19	20	21	22	23
24	25	26	27	28	29	30

10/11 No School - PD

November 2021

Sun	Mon	Tues	Wed	Thurs	Fri	Sat.
31	1	2	3	4	5	6
7	8	9	10	11	12	13
14	15	16	17	18	19	20
21	22	23	24	25	26	27
28	29	30				

No School (Records Day/Comp)
11/5 End of Quarter 1 (7-12)
11/23 End of 1st Trimester (JK-6)
11/24-11/29 Thanksgiving Break

December 2021

Sun	Mon	Tues	Wed	Thurs	Fri	Sat.
			1	2	3	4
5	6	7	8	9	10	11
12	13	14	15	16	17	18
19	20	21	22	23	24	25
26	27	28	29	30	31	

12/20-1/2 Holiday Break

January 2022

Sun	Mon	Tues	Wed	Thurs	Fri	Sat.
						1
2	3	4	5	6	7	8
9	10	11	12	13	14	15
16	17	18	19	20	21	22
23	24	25	26	27	28	29
30	31					

1/3 Return from Holiday Break
1/17 No School - MLK Day
1/28 end semester 1 (7-12)

February 2022

Sun	Mon	Tues	Wed	Thurs	Fri	Sat.
		1	2	3	4	5
6	7	8	9	10	11	12
13	14	15	16	17	18	19
20	21	22	23	24	25	26
27	28					

2/4 No School (Records Day/PD)

Middle School Vaccination Requirements

Action Required

For all students entering the 7th grade, it is required by law that the school district reports their immunization status to the local health department. With that being said, all children who attend school in Michigan are required by state law to be fully immunized to their standards.

Please review your child's immunization status with their medical provider *prior to the start of the 2021/2022 school year* to ensure compliance. Note that the Meningococcal and Tdap vaccinations are required for children 11 years of age or older upon entry into 7th grade. State of Michigan vaccine requirements can be viewed here: https://www.michigan.gov/documents/mdhhs/School_Req_for_Schools_553548_7.pdf

If you have a personal objection to immunizations, please contact The Livingston County Health Department ASAP to set up an appointment to obtain a certified immunization waiver, 517-546-9850. Original waivers, not copies, must be submitted to the school. **If you have obtained an immunization waiver in the past for your student(s), please note that a new, updated waiver is required for 7th grade entry.**

In accordance with Michigan law, your student(s) must be fully vaccinated OR have an updated certified immunization waiver on file before the first day of the 2021/2022 school year in order to attend. Exclusion is not desired but will be enforced if necessary.

Please feel free to contact nursing with any questions.

Thank you for your cooperation,

Cadie Godfrey, MSN, RN, FNP-C – BAS District Nurse
godfreyc@brightonk12.com

Linda Barrett, RN – BAS District Nurse
barrettl@brightonk12.com



****NOTICE ****FIRST AGENCY, INC.****NOTICE**

Student Insurance is available online. If you are interested in enrolling, please follow the instructions below. Thank you!

How to Find the Brochure PDF and/or enroll online:

Go to our home page at www.1stAgency.com

From there, go to "Find Your School"; select the state; hit "Go"

A Word From The Special Education Department

Brighton Area Schools provides a variety of learning options for eligible students with disabilities by offering a continuum of educational environments, from generalized education class placements with special services to pull out programs in specialized classrooms. Special education programs and services are operated and administered in the local school buildings in collaboration with the Livingston Educational Service Agency.

If staff members or parents believe a student is struggling academically, socially, or behaviorally, a referral should be made to the C.A.R.E. Team through his/her general education teacher or the school administration.

**Attendance & Office Procedures**

If your student is going to be absent from school please use our convenient twenty-four hour absence call-in line **(810) 299-3688**.

- Please obtain a doctor's note to receive a medically excused absence.
- Please call when your student will be coming in late.
- You must call in each day that your child is absent.
- Please call no later than 9:00 a.m. on the day of the absence.
- Students arriving late to school should be dropped off at the flag pole door.
- **Do not** drive off until your student has rang the doorbell and is **inside** the building.
- Students arriving late to school **must** report to the office to sign in. **Parents cannot come inside.**
- Please send in a note for early dismissal and have it signed by office personnel.
- Please call when you arrive and we will send your student out. You do not need to come in.
- **We will only allow students to be signed out by people who are listed on the emergency card.**
- If you need an in-person meeting with a Principal or with staff, we ask that you please call and make an appointment.

SUMMER CAMP
June 21-23 @ 9 A.M. - 12 P.M.
Ages 8-11

Spark! Ignite Your Child's Sensational Self-Confidence via
<https://brightonk12.ce.eleyo.com>
 6124-s21a

QR Code





SAVE THE DATES... *Summer*

FUN & ENGAGING ACTIVITY CAMPS

Inquiries
empoweringkids@coachingkids4success.com



SUMMER CAMP 

Aug 3-5 @ 9 A.M. - 12 P.M.
Ages 9-12

Dream, Believe and Achieve It Camp via
<https://brightonk12.ce.eleyo.com>
 6123-s21a

QR Code



COACHING KIDS 4 SUCCESS 

Michigan's Five Most Common Ticks

Ticks are significant carriers of pathogens that cause human and animal disease. Listed here is a ranked order of the ticks most likely to bite humans in Michigan.

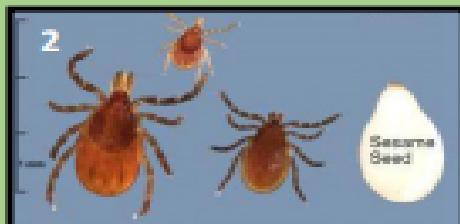


1. American dog tick (*Dermacentor variabilis*)

Distribution: Widespread throughout Michigan forests and grassy areas

Key Facts: These ticks are active from early May-November, and will bite both humans and companion animals.

Diseases: Diseases associated with the American dog tick are rare in Michigan, but may include [Rocky Mountain spotted fever](#) and [tularemia](#).



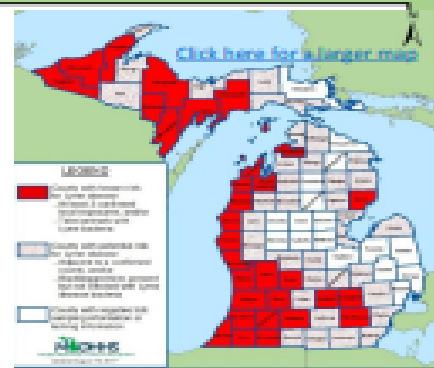
2. Blacklegged tick (*Ixodes scapularis*)

Distribution: Emerging in

Michigan, see map at right

Key Facts: Found on low forest vegetation, often along human and animal trails.

Diseases: [Lyme disease](#) is the most common tick-borne disease in Michigan. Other rare diseases include: [anaplasmosis](#), [babesiosis](#), [deer-tick virus](#), and [ehrlichiosis](#).



3. Lone star tick (*Amblyomma americanum*)

Distribution: Occasionally found in wooded and grassy areas across the state

Key Facts: An aggressive biter of humans and companion animals, adult females have distinctive "Lone Star" mark

Diseases: [Ehrlichiosis](#), [rocky mountain spotted fever](#), [tularemia](#)



4. Woodchuck tick (*Ixodes cookei*)

Distribution: Found most commonly on pets throughout Michigan

Key Facts: Usually found near dens of skunks and woodchucks, will bite companion animals near animal dens and occasionally humans

Diseases: [Powassan encephalitis](#)



5. Brown dog tick (*Rhipicephalus sanguineus*)

Distribution: Occasionally found in Michigan.


Key Facts: can uniquely survive and breed in indoor environments, has been associated with kennel, shelter, and breeding facilities. Good hygiene practices can prevent indoor infestations.

Diseases: [Rocky mountain spotted fever](#), [canine babesiosis](#), [canine ehrlichiosis](#)

Tick Bite and Tick-Borne Disease Prevention

- Use insect repellents containing no more than 30 percent DEET.
- Use repellents that contain permethrin on clothing.
- After spending time outdoors, check your skin and clothes for ticks.
- See your healthcare provider if you have symptoms of fever, rash, body aches or fatigue.

SCHOOL BUS



Livingston
**EDUCATIONAL
SERVICE** Agency

BE A BUS DRIVER TODAY!

Quick Facts:

- 1) When training with one of our certified trainers: \$13.66/hr.
- 2) Once training is completed, substitute bus drivers: \$17.87/hr.
- 3) Sign on bonus of \$250 now, \$250 after 6 months

Apply NOW!

BEABUSDRIIVER.ORG

Or give us a call for assistance!
(810)299-3890; anyone who answers the phone can help!

4817243-001 ©2009 PAPER MASCOT GROUP, INC. SCRANTON, PA 18501



**FALL 2021 FOOTBALL REGISTRATION
OPENS **FEBRUARY 1st FOR ALL** RETURNING FOOTBALL
PLAYERS AND CHEERLEADERS!**

REGISTRATION CLOSSES **JUNE 1st!
SIGN UP USING THE LINK BELOW!**

REGISTER: 2021 BBFC FOOTBALL AND CHEER REGISTRATION

B 2021 Brighton Baseball Summer B

Skills Camp #1 (grades 3rd-9th)

w/ Coach Christner, his staff & players

June 21st, 22nd, & 23rd (June 24th rain out date)

Players will learn the fundamentals of: Hitting, Fielding, Catching, Pitching, and Base Running from Coach Christner, along with current and former Brighton Baseball players, including BHS alumni playing college baseball and current coaches. This year's camp will take place in our half million-dollar baseball complex. It is one of the top 5 baseball complexes in the entire state, and this is your chance to play on our field of dreams. **This year each camper will receive a Brighton Baseball t-shirt.**

Ages: Players entering 3rd-6th Grade, 7th-9th Grade

Time: *Session 1* (3rd-6th) June 21st, 22nd, & 23rd 10:00-12:00am

Session 2 (7th-9th) June 21st, 22nd, & 23rd 12:15-2:15pm

Dates: June 21st, 22nd, & 23rd (June 24th make up rain out date)

Cost: \$90.00

Location: Brighton High School Baseball Field

Equipment: baseball glove, bat, helmet, athletic wear, and cleats or tennis shoes

Contact: Coach Christner, if you have any questions at ChristC@brightonk12.com

Please email the completed form to the above email in order to receive a spot in the camp. Check / money order (**payable to BYBSP**) or credit card will be accepted.

You can mail registration and check to 5540 N. Nicholson Rd. Fowlerville, MI 48836

YOU MAY CALL IN YOUR CC INFO TO CHERYL ROYSTER IF YOU PREFER:

(810) 355-6587

CC Number _____ Exp _____ CVC CODE _____

Name on Card: _____

Signature: X _____

I authorize credit card payment on this order.

Name: _____ Age: ____ Camp Session: ____ Shirt Size: ____

Address: _____ Phone Number: _____

E-mail Address: _____

Camper's must provide their own insurance. I hereby authorize the Brighton Boys Baseball Youth Camp personnel to act for me according to their judgment in any emergency requiring medical attention for my child.

Parent/Guardian Signature _____

Type of Insurance _____

Policy # _____

I don't hold the personnel, Brighton Area Schools or anyone associated with the Brighton Baseball Youth Camp responsible for any injury occurring to my child while under their direction.

Parent/Guardian Signature: _____ Date: _____

June Camp 2021



2021 Brighton Baseball Camps

Grades 3rd-9th w/ Coach Christner, staff & players

July 19th, 20th, & 21st (July 22nd rain out date)



Players will learn the fundamentals of: Hitting, Fielding, Catching, Pitching, and Base Running from Coach Christner, along with current and former Brighton Baseball players, including BHS alumni playing college baseball and current coaches. Our goal with this year's camps is to get the boys on the field to work on their game and improve their skills. **This year each camper will receive a Brighton baseball t-shirt.**

Ages: Players entering 3rd-6th & 7th-9th Grades

Dates: July 19th, 20th, & 21st (July 22nd make up rain out date)

Time: *Session 1* (3rd-6th) **July 19th, 20th, & 21st 9:00-11:00am**

Session 2 (7th-9th) **July 19th, 20th, & 21st 11:15-1:15pm**

Cost: \$90.00

Location: Brighton High School Baseball Field

Equipment: baseball glove, bat, helmet, athletic wear, and cleats or tennis shoes

Contact: Coach Christner, at ChristC@brightonk12.com Please email the completed form to the above email in order to receive a spot in the camp. Checks (**payable to BYBSP**) or credit card will be accepted. You can mail registration and check to 5540 Nicholson Rd. Fowlerville, MI 48836 **YOU MAY CALL IN YOUR CC INFO TO CHERYL ROYSTER IF YOU PREFER: (810) 355-6587**

CC Number _____ Exp _____ CVC CODE _____

Name on Card: _____

Signature: X _____

I authorize credit card payment on this order.

Name: _____ Grade: _____ Camp: _____ Shirt Size: _____

Address: _____ Phone Number: _____

_____ E-mail Address: _____

Camper's must provide their own insurance. I hereby authorize the Brighton Boys Baseball Youth Camp personnel to act for me according to their judgment in any emergency requiring medical attention for my child.

Parent/Guardian Signature _____

Type of Insurance _____ Policy # _____

I don't hold the personnel, Brighton Area Schools or anyone associated with the Brighton Baseball Youth Camp responsible for any injury occurring to my child while under their direction.

Parent/Guardian Signature: _____ Date: _____

July Camp 2021



June 14th-August 26th

Select Locations Weekly

Join the Summer Fun!

Lunch - Pantry Boxes - Craft Packs!

CHECK OFTEN FOR UPDATES

www.SalvationArmyLivingston.org

Facebook @SummerLunchBunch

The Salvation Army/PO Box 647 Howell 48843/ 517-295-4345
deborah.humphrey@usc.salvationarmy.org

In Partnership With





The Salvation Army Summer Lunch Bunch

LOCATION	DATE	TIME	MORE INFORMATION
Hamburg Township Library 10411 Merrill Road Hamburg, MI 48139	Mondays June 14 - August 23	Check In: 11:45 a.m. Lunch Served: 12:00 p.m. - 12:30 p.m.	www.hamburglibrary.org
Brighton Village Mobile Home Park 7500 Grand River Ave Brighton, MI 48114	Tuesdays June 15 - August 24	Check In: 11:45 a.m. Dinner Served: 12:00 p.m. - 12:30 p.m.	Come visit us at the mailboxes
Fowlerville Library 130 S. Grand Ave. Fowlerville, MI 48835	Wednesdays June 16 - August 25	Check In: 11:45 a.m. Lunch Served: 12:00 p.m. - 12:30 p.m.	www.fowlervillelibrary.org
Howell Estates Mobile Home Park 515 Mason Road Howell, MI 48843	Thursdays June 17 - August 26	Check In: 4:45 p.m. Dinner Served: 5:00 p.m. - 5:30 p.m.	Come visit us next to the Club House Pool is NOT open to the public
Hartland Meadows Mobile Home park 13634 West Highland Road Hartland, MI 48353	Friday June 18 - August 13	Check In: 11:45 a.m. Lunch Served: 12:00 p.m. - 12:30 p.m.	Come visit us next to the Club House
Howell Carnegie Library 314 W Grand River Ave Howell, MI 48843	Thursdays June 17, June 22 & July 22	Check In: 11:15 a.m. Lunch Served: 11:15 a.m. - 12:00 p.m.	www.howelllibrary.org Events held by Library REQUIRE registration Sack meals are open to anyone
Howell Carnegie Library 314 W Grand River Ave Howell, MI 48843	Monday July 19	Check In: 3:45 p.m. Dinner Served: 3:45 p.m. - 4:15 p.m.	www.howelllibrary.org Events held by Library REQUIRE registration Sack meals are open to anyone

Take Home Crafts provide each week with the help of our program Sponsors



For more information, visit our Facebook page: @SummerLunchBunch or contact Deborah Humphrey 517-295-4345

Stay up to date on what is going on by visiting our website : www.SalvationArmyLivingston.org

Pantry Packs and Take Home Crafts are first come, first served

Visit www.michigan.gov/meetupsetup to find additional sites in your county, updated nightly

June 2021

Maltby Intermediate

Lunch

MONDAY	TUESDAY	WEDNESDAY	THURSDAY	FRIDAY
	1	2	3	4
	<ul style="list-style-type: none"> • Big Daddy Cheese Pizza with • Grape Tomato and • Sliced Apples 	<ul style="list-style-type: none"> • Cheese Crunchers with • Broccoli Floret • Ranch Lite Dressing cup and Assorted Fruit 	<ul style="list-style-type: none"> • Mini Cinnis • Turkey Sausage Breakfast Link with • Sun Splash Juice Box and • Sliced Apples 	<ul style="list-style-type: none"> • Whole Grain Bosco Cheese Breadstick with • Marinara Sauce and • Baby Carrots • Valencia Oranges
7	8	9	10	11
<ul style="list-style-type: none"> • Big Daddy Cheese Pizza with • Grape Tomato and • Sliced Apples 	<ul style="list-style-type: none"> • Walking Taco with Reduced Fat Doritos with • Broccoli Floret • Ranch Lite Dressing cup and Assorted Fruit 	<ul style="list-style-type: none"> • Hot Dog on a Whole Grain Bun and • Baby Carrots • Sliced Apples with • Chips 	Maltby Field Day! <ul style="list-style-type: none"> • Apple flavored Eggo Mini pancakes with • Turkey Sausage Breakfast Link and • Sun Splash Juice Box and • Sliced Apples 	Half Day- No Lunches
14	15	16	17	18
21	22	23	24	25
28	29	30		

Maltby Menu Prices: Student Breakfast \$2.00 , Student Lunch \$2.75 , Milk \$.50 , Adults Meals \$4.75

Ice -Cold Milk (included with all meals): Prairie Farms 1% Chocolate Milk, Prairie Farms 1% White Milk, Prairie Farms Fat Free Milk

This institution is an equal opportunity provider. Layout & Design © Nutrislice, Inc. Printed on 5/14/2021 at 9:22 am .

For more information or for nutritional values, please visit:

[June 2021 Lunch Menu - Maltby Intermediate School](https://www.brightonk12.com/Page/7665)

For the 2020-21 Free & Reduced Application Packet, please visit:

<https://www.brightonk12.com/Page/7665>

Mask Up Maltby

For the 2020-2021 school year, all Maltby students and staff will be required to wear a face covering while in the classroom and in shared areas of Maltby. **It must be over the mouth and nose to be used effectively.** Below are some considerations for Maltby families to think about as we prepare to start school under these unusual circumstances.

1. Start talking to your student about wearing a mask.

- i. Explain why they are required at school
- ii. Answer your students questions with confidence and encouragement
- iii. Remind them this is not just about them, all students and staff will be wearing masks!

2. Ways to help your student wear a mask-

- i. Ask your child to wear it at home and in other social situations. Get used to taking it off and putting it back on efficiently.
- ii. Encourage your student to personalize their mask or pick out their own.

3. Students will be required to wear masks at school.

a. The Back to School Roadmap states that in Phase 4 students will be required to wear mask in their classrooms and shared spaces within the school building

- i. If your student refuses to wear a mask at school:
 1. A disposable mask will be offered to the student and a warning given.
 2. The second time a student is found without a face covering, the student's parents will be notified and the student will be sent home.
 3. If the behavior continues, disciplinary action will be taken and a parent meeting will take place.
- ii. The only times students will not be required to wear masks is when they are eating/drinking or at recess/outside with their class cohort.

Here is a helpful article about masks and kids:

<https://www.healthline.com/health-news/from-toddlers-to-teens-how-to-talk-to-kids-about-wearing-masks>



LIVINGSTON COUNTY
Health Department

FOR IMMEDIATE RELEASE

New Drive-Thru COVID-19 Testing Site in Brighton to Provide Saliva Testing

HOWELL, Michigan. - (March 19, 2021) The Livingston County Health Department (LCHD) is excited to announce with LynxDx and the 2|42 Community Center, a new drive-thru COVID-19 testing site in Brighton opening today, Friday, March 19. This new site offers contactless saliva testing and is open to all Michigan residents with or without insurance. COVID-19 continues to spread in the community, and more recently, the B117 variant was discovered in Livingston County. Access to COVID-19 testing is an important tool in helping identify cases and prevent further community spread of COVID-19.

“This new testing site will benefit our entire community,” says Juan Marquez, MD, MPH, medical director at LCHD. “We’re grateful to partner with Lynx and the 2|42 Community Center in bringing more accessible, faster testing to our county. Additionally, we know there has been a lot of interest in saliva testing. We’re excited to bring this no-contact saliva testing option to our community members.”

Anyone with COVID-19 symptoms should immediately seek testing. If you were potentially exposed but do not have symptoms, LCHD recommends self-quarantine and waiting at least 5 or more days before testing. If you are in quarantine and develop symptoms, testing is recommended. Symptoms may take up to 14 days after exposure to appear, and individuals are considered contagious two days before symptoms appear.

Anyone getting tested should stay away from others until they get their results. Anyone with symptoms should stay home unless they are getting medical care or testing and limit all contact with others in their household.

Testing Site Information

The testing site opens Friday, March 19. Testing will be available on Mondays and Fridays from 8:00 am to 6:00 pm in the parking lot at the back of 2|42 Community Center/Church, 7526 Grand River Ave., Brighton, MI 48114. The site is drive-thru only. Tests will be contactless and saliva-based (no nasal swabs required). Results will be sent to your email or phone within 48 hours.

Who Can Get Tested?

Testing is open to all Michigan residents. You do not need to have symptoms to get tested. You do not need a doctor’s note or order to get tested. Pre-registration is required. Register for a test at <https://lynxdx.health/register>.

Testing is available with or without insurance. Please bring identification when you arrive for testing. If you have health insurance, please bring your card. There should be no out-of-pocket fees for individuals needing testing. Many insurance providers have already waived copays for COVID-19 testing. If you do not have insurance, testing staff will ask for your social security number to verify that you do not have insurance. Once you arrive on-site for testing, LynxDx will verify your identity and other information. They will then provide a self-testing kit to collect your saliva sample.

About LynxDx

LynxDx, Inc. is a privately held diagnostics company headquartered in Ann Arbor, which spun out of the University of Michigan. LynxDx currently operates a high-complexity molecular diagnostics laboratory, and is focused on commercializing diagnostic tools, including a qPCR assay for COVID-19 and a urine assay to aid in diagnosing prostate cancer (MyProstateScore).

CONTACT:

Natasha Radke, Public Information Officer
Livingston County Health Department
(517) 546-9850
nradke@livgov.com
www.lchd.org

<https://www.facebook.com/myLCHD>

There is now a web-based COVID-19 self-reporting form for school staff members and parents/guardians to use on the Livingston County Health Department site!

The hope is that the use of this form will help expedite case investigation and confirmation and also decrease call volume for case-related matters.

[COVID-19 Self-Reporting Form Livingston County](#)

Appendix AB

COVID-19 STAFF AND STUDENT AT-HOME SCREENING CHECKLIST FOR SCHOOLS



Monitor your health each day prior to arriving at school or work. If you have symptoms of COVID-19, stay home, contact the school, and consult your medical provider.

An electronic version of this screening form can be filled out at the MI Symptoms App: <https://bit.ly/2Xl5oSA>

01 Have you had any of these symptoms?

Check any current symptoms that developed within the last two weeks.

- Chills
- Loss of taste or smell
- Sore throat
- Shortness of breath
- Diarrhea
- Congestion or Runny Nose
- Cough
- Headache
- Nausea or vomiting
- Muscle aches without recognizable cause

02 Do you have a fever or feel feverish?

- Yes If yes, please enter your body temperature °F
- No A fever is a temperature above 100.4°F

03 Have you had close contact with someone who was diagnosed with COVID-19 in the last two weeks?

- Yes
- No

04 Have you been diagnosed with COVID-19 in the past two weeks?

- Yes
- No

IF YOU ANSWER **NO** TO **ALL** OF THE QUESTIONS ABOVE, YOU HAVE PASSED THE HEALTH SCREENING

IF YOU ANSWER **YES** TO **ANY** OF THE QUESTIONS ABOVE:

- Stay home!
- Notify the school
- Consult your medical provider

For more information, visit www.lchd.org. Questions? Call the COVID-19 hotline at 517-546-9850.