



EAGLE EXPRESS

CHALLENGER ELEMENTARY BACK TO SCHOOL EDITION

Welcome to Challenger Elementary and the 2024-2025 school year! We are excited to have you and your child(ren) as a part of our Eagle family. By working together, we will ensure that every student has a safe and successful year at Challenger. We welcome you to visit our school, and we want you to contact us with any questions you may have.

CHALLENGER FRONT OFFICE STAFF

Principal: Becky Morris
 Asst Principal: Meghan O’Neal
 Counselor: Sissie Coe
 Nurse: Jennifer Raffety
 Secretary: Linda Gomez
 Registrar: Margot Lillibridge
 Receptionist: Jessica Balmaceda

Telephone: 281-485-7912
 Fax: 281-412-1105
 Mascot: Eagle
 Colors: Purple and Teal

VISITORS & SAFETY

ALL visitors must check in with a current Driver’s License and receive a Visitor Tag at the Front Office before going to any other areas of the building. The Visitor Tag must always be worn the entire time you are on campus.

DRIVER LICENSE

Classroom visits will be permitted with the principal’s and teacher’s prior approval. Teacher conferences will need to be scheduled during the teacher’s conference time.

We appreciate your time and understanding when you visit Challenger and are required to show identification. The process takes only a few seconds and is well worth the safety of all our children.

ATTENDANCE

School attendance is critical for the quality of your child’s education.

A child who misses a day of school misses a day of learning opportunities. Should it be necessary for your child to miss a day of school, you must submit your child’s absence online or send a written and signed note stating the reason for the child’s absence **within 3 days of the absence** with the information listed below.

- Student’s first and last legal name
- Grade Level
- Student ID #
- Specific dates of the absence
- Specific reason for the absence
- Parent signature

SCHOOL HOURS

Grades PK-4.....7:55 AM – 3:15 PM
 Front Doors Open.....7:15 AM
 Breakfast Served.....7:15 am – 7:50 AM
 Students Enter Class.....7:45 AM
 Class Begins.....7:55 AM
***Students must be inside the building by 7:55 AM. Students entering the building after this time will be tardy. If a student is tardy, parents are required to park and come into the lobby to sign them in.**

Please understand that due to constantly increasing enrollment, all schedules are subject to change.



Parents may walk students to class only the first 3 days. Plan to leave the classroom before 7:50, so we can begin our morning routine.



Please read the complete Pearland ISD Student Handbook and Code of Conduct and the Challenger Supplemental Student Handbook (all available online).

If a doctor's note is submitted, please make sure that it covers ALL days of the absence. If not, please send an accompanying parent note with the above-listed information. Emails will no longer be accepted.

Students are required to attend class 90% of the time it is offered to be able to receive credit and be promoted to the next grade level. All absences, regardless of excused or unexcused, including leaving early and coming in late, count towards the 90% rule.

Please help make your child’s education a top priority by building a habit of daily attendance

Connect with us on social media!

[pearlandchallengerelem](https://www.instagram.com/pearlandchallengerelem)



Challenger Elementary

ARRIVAL & DISMISSAL



Car Riders- Parents will receive 2 Challenger car tags on the first day of school. If your family needs more than 2, you can stop by the front office for additional tags at any time for \$2 each. Please ensure the car tag is hanging from your rear-view mirror every day for a quicker dismissal. **Please do not park or drop off from the street or parking lot. Parents must remain in their car at all times. Car traffic is heavy and unpredictable at dismissal time, making it very unsafe.**

- **Car Rider Arrival:** Car riders can be dropped off in the **front driveway** beginning at 7:15 a.m. Please do not drop off students earlier than 7:15 a.m. because there will be no supervision for your child before this time. We have a lot of car riders at Challenger. **To avoid long lines, we recommend arriving prior to 7:40.** Please pay attention to the staff members on duty and pull all the way up to keep the line moving. **Dropping off in the bus lane is not permitted.**
- **Car Rider Dismissal:** **Car rider dismissal will be in the front, just like arrival.** A car rider tag must be shown to the staff member who is inputting the numbers. Cars that do not have the Challenger tag and do not know the child's specific dismissal number will need to park and report to the front office with your ID. For safety reasons, walking up to the car rider line to get your child will never be allowed.

Walkers/Bike Riders:- Walkers and bike riders are to stay on the sidewalks at all times and should only cross the street where the crossing guard is located at Hughes Ranch Rd and Bryon Ct from 7:15-7:55a.m./3:15-3:30 p.m.

- **Walker/Biker Arrival:** Students eating breakfast should arrive between 7:15-7:45 a.m. Bike riders are encouraged to lock up their bikes to the bike rack. Parents may walk your child across the crosswalk, but please say your good-byes here for safety and security purposes.
- **Walker/Biker Rider Dismissal:** Those students needing to cross Hughes Ranch Rd. to get home, will be designated **Crosswalk Walkers**. Those students who remain on Hughes Ranch Rd. heading toward South Hampton/Autumn Lake will be designated **West Walkers**. **Parents who wish to meet their walker/biker will wait for them in the location designated on the Dismissal Map.** All walkers and bike riders will be released, whether parents are or are not meeting their children.

Bus Transportation: The opportunity to ride a Pearland ISD school bus is a privilege and certain expectations for appropriate conduct have been established to ensure the safety of all students. Parents will be notified of any student who does not follow the bus rules. Students are allowed to ride their regular bus only. They may not ride home with a friend. **Students in PreK and Kindergarten will only be released from the bus to an approved adult using their child's unique PIN# provided by the parents at the time of registration.**

CHANGE IN TRANSPORTATION

It is extremely important to our staff that all students are dismissed safely every day. Frequently changing modes of transportation can cause confusion for children. **Emergency** situations do arise which may require a change in how students go home. If there is a change in how your child will go home, **please notify the front office** of the transportation change, no later than 2:30p.m. **Please do not email or text transportation changes to the teacher.** Teachers do not check their email during instructional time, and they may be off campus.

EARLY PICK-UP



To ensure a smooth and organized dismissal, parents who need to pick up their child early for an after-school doctor appointment, etc. should do so by 2:30 p.m. Thank you for your cooperation!

PICKING UP STUDENTS

If someone other than the parent will be picking your child, the person's name must be listed in Skyward as family member or emergency contact. The person designated to pick your child must be prepared to show appropriate identification to school officials.

TARDIES

A student is considered tardy after 7:55 a.m. All children are encouraged to arrive at school and class on time. Excessive tardies count as days and parts of days in recording attendance and may be turned over to the Pearland ISD truancy offer.



STUDENT BIRTHDAYS

Your child may bring in store bought birthday treats for the class to celebrate their birthday (**or 1/2 birthday**). Birthday treats will be shared with your child's class. Treats must be single serving (cupcakes, cookies, donuts, **ONLY**). Please check with your teacher regarding food allergies. Balloons, gifts, and treat bags are not permitted.

Half Birthdays: June/December, July/January, August/February

Birthday invitations may be sent home from school if every student in the class (or every boy/girl) is receiving an invitation.



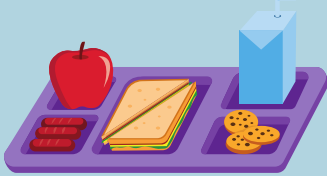
Nurse Jenn is excited to begin her 4th year at Challenger! She wants to encourage you to visit the district Health Services information using the QR code below. If you have any questions for her, please email her at raffetyj@pearlandisd.org.

Students at Challenger are not allowed to carry any medications with them. All medications must be brought to the clinic with a note from the parent.

All student immunizations must be current. If an updated immunization is needed, you will be notified. Kindergarteners and Pre-Kindergarteners should be fully immunized before the start of school. Please send a copy of any updates to the clinic.



Scan the QR Code above for more information on Health Services in Pearland ISD.



CAFETERIA INFORMATION AND PROCEDURES

Breakfast \$1.45 (\$0.00 Reduced)

Lunch \$2.50 (\$0.40 Reduced)

o Money can be easily added to your child's account for additional items they wish to purchase at www.schoolcafe.com.

o We welcome lunch visitors at Challenger beginning Tuesday, September 3rd. **(We are closed to lunch visitors the first few weeks of school. This time is used for teaching routines, procedures, and expectations for the cafeteria.)**

- All visitors will check in at the front reception desk with a photo ID.
- We suggest that you arrive early to ensure that you are ready at your child's lunch time.
- Visitors are welcome to bring in lunch for themselves and their Challenger Eagle, however students can still purchase a meal from the cafeteria when they have guests. If a cafeteria lunch is needed, the student will get their lunch from the cafeteria line and meet their lunch guest in the PTA room.
- Lunch visitors must refrain from taking additional students to the PTA room.
- Please say your goodbyes in the PTA room at the end of your child's lunch time. Visitors should not walk back to the classroom with the class but should report directly to the front office to check out.
- Closed Campus Days: There will be a limited number of days when we will be closed to lunch visitors due to testing, etc. These days will be communicated well in advance through the Eagle Express.
- If you are dropping off a lunch for your child, please make sure you have it here early so that we have time to get the lunch to your child.

IMPORTANT LINKS

Fill out Pearland ISD Volunteer form (volunteering on campus, helping with events, attending field trips) [\(CLICK HERE\)](#)

How is your child getting home? Please fill out this form [\(CLICK HERE\)](#)

Challenger Elementary

SPIRIT GEAR



Order your Challenger spirit gear now through Aug. 27th!



CREWNECKS



T-SHIRTS

HOODIES



****All students are encouraged to purchase their grade level shirt which will be worn on field trips, at music performances, on spirit days, etc.**

GRADE LEVEL SPIRIT SHIRTS



Upcoming Events

Mon	Tues	Wed	Thurs	Fri
	6 6:00pm PK/Kinder Orientation in the cafeteria 6:45 - 7:30pm Popsicles with Principals	7	8 7:30-3:30pm Car Tag Pickup 5:00 pm Teacher Assignment in Skyward	9 3:00-3:45 School Supply Drop-Off
12 First day of school	13	14	15	16
19	20	21	22 6:30 pm Meet the Teacher Night	23

Challenger Collective Commitments

At Challenger Elementary we all have Integrity, Perseverance, Respect, Courage and strive for Excellence everyday.

Challenger School Pledge

I must work hard today, get smarter in every way, helped by my teachers, my family, and my friends. If I make some mistakes, I have what it takes to keep trying until I really succeed.

