

The
Purple

Copyright 1937

By

CHARLES D. KNAPP, Editor
CHARLES ECKHARDT, Business Mgr.
J. HENRY HEDLEY, Adviser

Published for the Graduating Class by the Journalism Department of the Field Kindley High School, Coffeyville, Kansas.

Helen Banowetz	Bob Haney
Eleanor Bettisworth	Ruth Virginia Huddleson
Eloise Black	Shirley Karns
Orville Cramer	Marjorie McGrew
Jane Helen Davies	Charles Mohler
Betty J. Doering	Vernon Plattner
Ruby Englund	Dolretta Pyatt
Troy Gordon	Robert Robinson

Jr Miller

JUNIOR MEMBERS

James Beckett	Nonie Blanton
Annella Blanton	Betty Jeanne Hamlet
Edward Terrar	

Engraving by
MID-CONTINENT OF WICHITA

Printing by
THE COFFEYVILLE JOURNAL

Photography by
SUPERIOR STUDIO OF COFFEYVILLE

Acknowledgment is hereby made for the assistance of
E. E. Shelly and Donald Mitchell

Sarah James 38'

Lois Mathis

Waldine Sweet

Charles Eckhardt





SUPT. KENNETH W. McFARLAND

completes his second year as chief executive of the city school system. His amiable manner and untiring industry have made their everlasting mark on all of us.

PRIN. VICTOR A. KLOTZ

has demonstrated his capacity for leadership and guidance another year. His interest in all activities and successful handling of our many problems have proved his mettle.

Victor A. Klotz



Top Row, left to right: Swan Highbaugh, Electricity; Jewell K. Watt, Vice Principal; Clark Hendrix, Speech; Ralph Pate, Woodworking; Robert Myers, Biology; L. M. Lewis, Coach; C. P. Neis, Social Science; F. A. Thorne, Commerce; G. N. Abbott, Auto Mechanics; Victor A. Klotz, Principal.
Middle row: Earl Shelly, Mechanical Drawing; C. J. McKee, Music; Eugenia Dawson, Home Economics; Ellen Penn, Foods; Hazel Curtis, Commerce; Helen Larson, History; Florence Penn, Art; Annabel Phillippe, Commerce; R. A. Shenk, Chemistry; J. Henry Hedley, Journalism; James B. LeClere, Physical Education.
Bottom row: Pauline Schuetz, Modern Language; Mary Virginia Smith, Physical Education; Ruth McFerren, Library; Jane Dale, English; Florence Hoover, English; Betty Gregory, Clothing; Lydie Back, Latin; Lucille Benning, Office; Carrie Weaver, English; Helen Glaser, Mathematics; Carrie Webb, Mathematics.

Board of Education have manifested in us and our institution this year

CHARLES D. ISE, *President*
BERT SHORES
L. B. BRANT
DR. H. J. BAGBY

BRAUM BENTLEY
RALPH MORGAN
F. S. MITCHELL, *Treasurer*
MRS. W. H. MIFFLIN, *Clerk*

In Our Office



. . . . We find Lucille Benning, gracious and efficient secretary to the principal—assistant to the entire faculty—informant and helper to the whole student body.

. . . . We find, also, the man who knows where every student is (and a lot more than that, we have reason to believe)—Vice-Principal Jewell K. Watt.



The Congress gives aid and aid to the administrators and students of Field Kindly. Activities of these governors includes monitor service, sponsorship of all-school parties and entertainments, supervision of money-making projects, control of the activity ticket system, and general regulation of those activities not directly under classroom supervision.



Rowland

Hoover

Plattner

Peters

The representatives are: Back row, left to right: Jack Starmer, Horace Huggins, Joe Peters, Bill Williams, Leon Niswonger, Vernon Plattner, Lawrence Hickey, Florence Drake, George Woods.

Third row, left to right: Marjorie Myers, Marjorie Karns, Jane Helen Davies, Virginia Ford, Bette Scott, Betty Hamlet, Madge Crow, Elsie Mae White, Mary Jane Cape, Wayne Perkins.

Second row, left to right: Richard Liebert, Neil Vediner Beverly Willcoxon, Florence Hoover, Lillian Rowland, Eloise Black, Mercedes Cosler, Virginia Brown.

First row, left to right: Charles Knapp, Edwin Chaney, Claude Donaldson, Bill Coomes, Burton Bowlus.

Autumn is here . . .



Then gone

But many happy thoughts
still linger

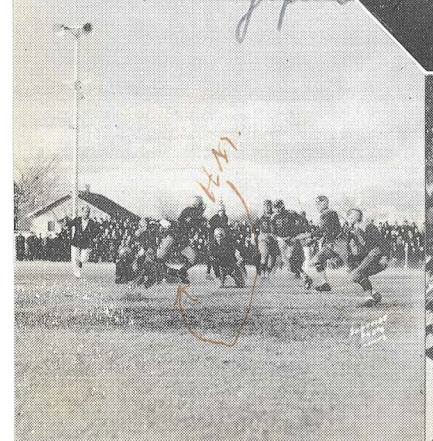
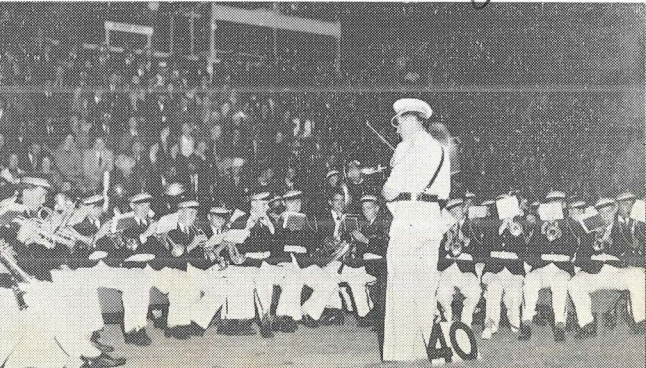
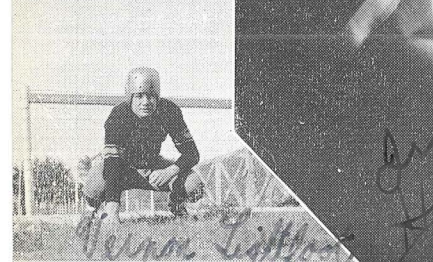
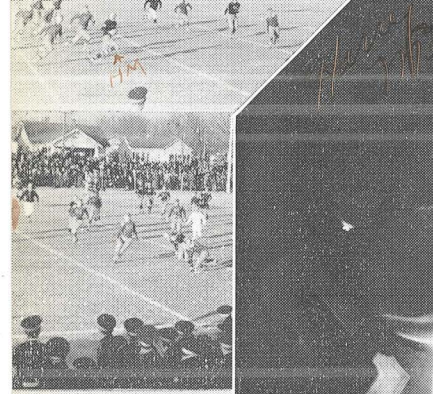
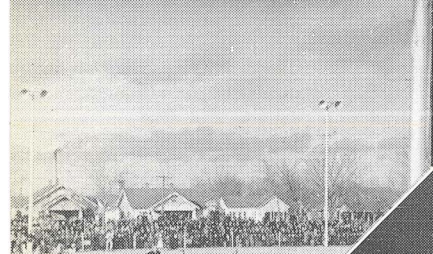
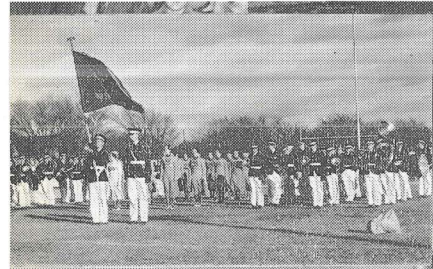
Junior Play

Drum Corps

Football

Band

Queen



activities; the Juniors are the tops



Madge Crow
MADGE CROW
Vice-President



Betty
BETTY HAMLET
Secretary



JANE DALE
Adviser



Missing Mummy, Mumps and Mixups make Junior Play a Farce of Fun and Thrills

Except for the Junior-Senior banquet which was an occasion of unexcelled beauty and entertainment, the presentation of the annual class play afforded the Juniors the chance to show their real merit. Under the direction of Miss Lydia Back the play was one of the superior dramatic productions in the history of the class.

The cast, pictured below, from left to right, included Lola Phegley, Richard Liebert, Jeanne Clark, Thelma Burt, Donald Mitchell, Roy Estes, Jean Ray, Geraldine Smith, Marie Bond, Wayne Bogue, Madge Crow, and Robert Weible.



Wearing white and gold military uniforms and tall plumed hats, the Drum Corps was greeted with enthusiasm when it made its initial appearance at the Montgomery County Fair last fall.

A trip to the American Royal Livestock Exposition at Kansas City, Mo., in company with the Field Kindley Band, was the highlight of the corps' out-of-town appearances during the school year.

The girls recall their trip to the Republican notification at Topeka last July as one of the most pleasurable excursions since the group's organization.

Last fall the corps accepted an invitation by the merchants of Iola to participate in an Armistice Day celebration.

A fitting climax to the year's activities was the splendid appearance of the Drum Corps in the Third Annual Festival at Joplin, Mo., April 29. First place was taken in the contest in which twenty-one Drum Corps were entered. An award of fifty dollars was received.

The closing weeks of the school year have found an ambitious group of understudies in frequent rehearsals behind the capable direction of the 1937-38 drum major, Betty Hamlet.

Officers for the past year have been: President, Marjorie Myers; Vice-president, Betty Hamlet; Secretary, Anita Reiter; Drum Majors, Betty Doering and Helen Banowetz.

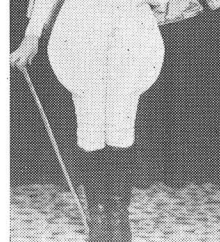


Drum Corps members: Top row, Jane Davies, Nonie Blanton, Elsie Mae White, Anita Reiter, Marjorie Myers, Evelyn Mayes, Glenna Perry, Elinor Kirby, Ruby Englund, Margaret Stebbins, Eloise Black.

Bottom row: Geraldine Wolcott, Frieda Schuetz, Bette Scott, Betty Hamlet, Martha Hayden, Helen Banowetz, Betty Jane Doering, Leah Pruet, Jill Ann Winters, Mary Jean Landers, Louie Sheehan.



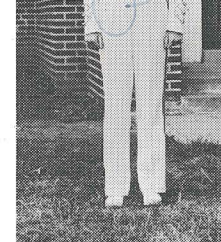
BETTY JANE DOERING
Drum Major
 1935-1936-1937



HELEN BANOWETZ
Drum Major
 1936-1937



RUTH McFERREN
Sponsor
 1935-1936-1937



BETTY HAMLET
Drum Major
 1937-1938

In addition to regular attendance in uniform at all home football and basketball games and at most of the out-of-town games, the group has held various social affairs, the outstanding event being the annual alumnae banquet in December at which time a number of new members were announced: Mary Jane Sims, Dixie Lee Williams, Kathryn Monson, Donaldine Myers, Dorothy Morgan, and Doris Henderson.

Since its organization three years ago, Ruth McFerren has been a very capable and enthusiastic sponsor, for which the present members wish to express their appreciation and best wishes for her happiness.

Regretting the loss of Miss McFerren as sponsor of the organization, the members however are looking forward to next year at which time the new sponsor, Betty Gregory, will take over the duties necessary in making the Drum Corps the successful group that it has been.



Drum Corps understudies: Top row, Kathryn Monson, Jean Searcy, Dorothy Walton, Mary Jane Sims, Dorothy Newberry, Madge Crow, Thelma Burt, Doris Henderson.

Bottom row: Dorothy Morgan, Mercedes Cosler, Betty Decker, Grace Bomboy, Donaldine Myers, Dixie Lee Williams.



SEASON'S RECORD, 1936

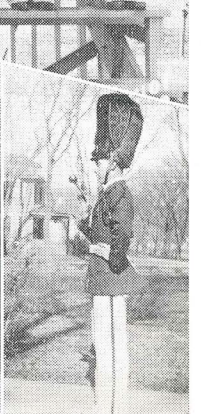
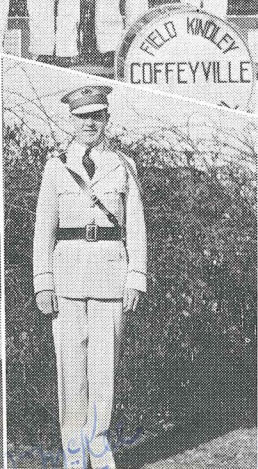
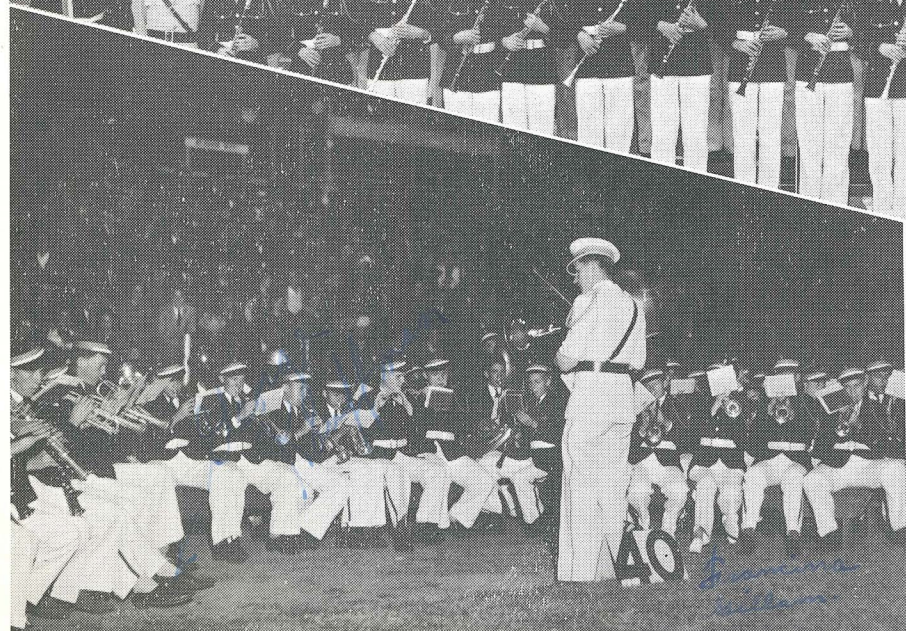
Coffeyville 21, Columbus 6.
 Coffeyville 19, Fort Scott 6.
 Coffeyville 15, Pittsburg 6.
 Coffeyville 6, Chanute 19.
 Coffeyville 2, Bartlesville 0 (forfeit).
 Coffeyville 0, Parsons 0.
 Coffeyville 7, Cherryvale 0.
 Coffeyville 13, Wichita 0.
 Coffeyville 0, Independence 7.

FINAL S.E.K. STANDINGS, 1936

Team	Won	Lost	Tied	Pct.
Chanute	5	1	0	.835
Pittsburg	5	1	0	.835
Coffeyville	3	2	1	.583
Independence	3	3	0	.500
Parsons	2	3	1	.417
Fort Scott	2	4	0	.333
Columbus	0	6	0	.000

Although starting the year with green material, Coach Leland M. (Babe) Lewis produced one of the most successful teams in recent years. The Tornado won six, lost two, and tied one for a percentage of .725.

Coffeyville players placing on the S.E.K. all-star team picked by Kenny Simons of the Pittsburg Sun and Headlight and the seven Southeastern Kansas League coaches were: Bernard Boehm, halfback, and Ernest Frisbie, end, first team; James Burgess, center, and Sammy Benefiel, halfback, second team; Vernon Lightfoot, tackle, Harry Masters, quarterback, and James Hamlet, fullback, received honorable mention.



C. J. [unclear]



SHIRLEY KARNs was given the right to wear the crown as the 1936 football queen.
BETTY HAMLET and VIRGINIA FORD were her attendants.

Autumn Fades

And Nature thrusts its wintry chill upon us
but spirit and enthusiasm runs high

Basketball

Tillies

Class of '39

Debaters

Hi-Y and G. R.

Girl Athletes

Little Symphony

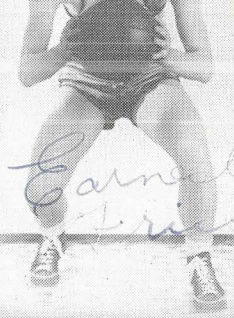
Other Sports

Carnival Queen
and Clubs

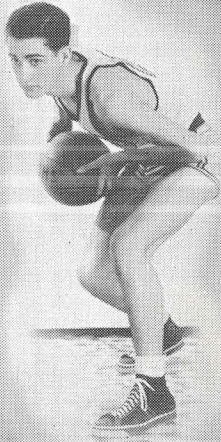
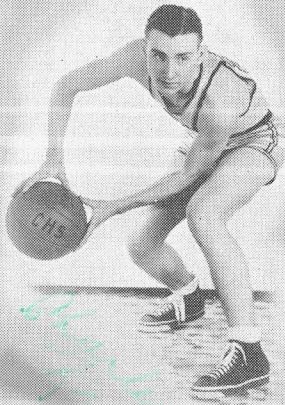
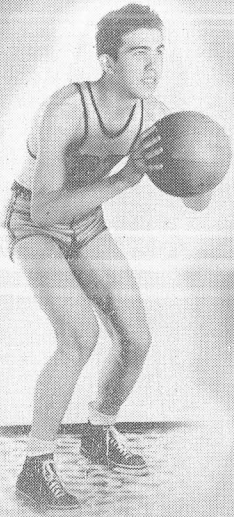
Ernie Pitt



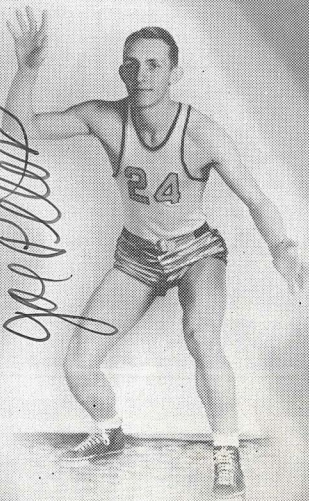
*Ernest
Sturkie*



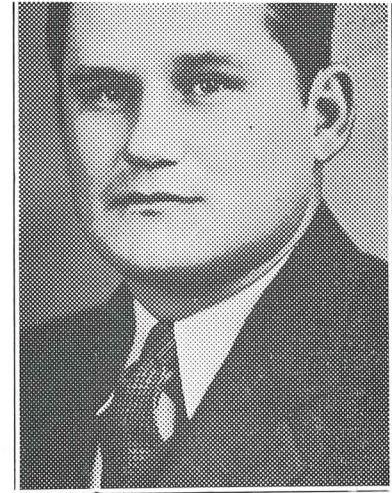
*Ernie
Hummel*



*Joe
Pitt*



Coffeyville 26, Miami, Okla., 11.
 Coffeyville 26, Independence 9.
 Coffeyville 2, Bartlesville 0 (forfeit).
 Coffeyville 46, Cherryvale 10.
 Coffeyville 15, Pittsburg 29.
 Coffeyville 24, Columbus 23.
 Coffeyville 21, Fort Scott 25.
 Coffeyville 20, Lawrence 21.
 Coffeyville 19, Chanute 38.
 Coffeyville 17, Neodesha 28.
 Coffeyville 21, Parsons 18.
 Coffeyville 31, Caney 18.
 Coffeyville 40, Cathedral (Wichita) 20.
 Coffeyville 23, Fredonia 24.
 Coffeyville 30, Independence 22.
 Coffeyville 26, Wyandotte of K. C. 38.
 Coffeyville 24, Pittsburg 36.



Coach Leland M. (Babe) Lewis

REGIONAL TOURNEY AT COFFEYVILLE

Coffeyville 54, Cherryvale 15.
 Coffeyville 23, Columbus 24.
 Coffeyville 13, Pittsburg 31.

FINAL S. E. K. STANDINGS, 1936-37

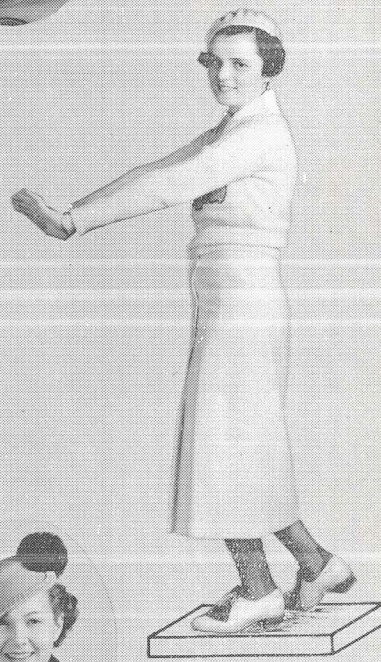
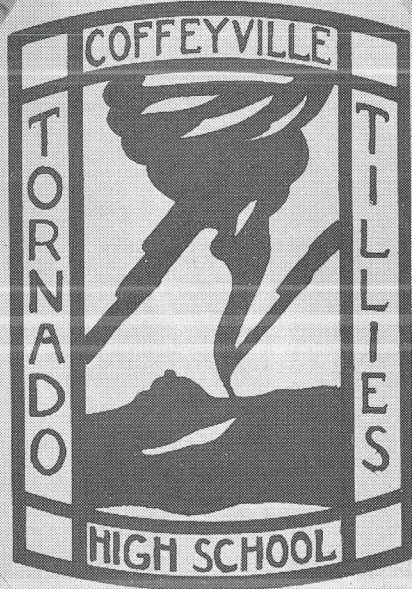
Team	Won	Lost	Pct.	Team	Won	Lost	Pct.
Chanute	6	0	1.000	Columbus	3	3	.500
Pittsburg	5	1	.835	Parsons	2	4	.333
Coffeyville	3	3	.500	Independence	1	5	.165
				Fort Scott	1	5	.165

The following Coffeyville players were placed on the all-SEK team by the seven Southeastern Kansas League coaches under the sponsorship of Kenny Simons, Pittsburg Sun and Headlight: Troy Gordon, guard, second team; Howard Ehart, forward, and Ervin Pitts, guard, honorable mention.

"C" Club



Hamlet, Burgess, Gann, Nicolas, Benefiel, Romig, Gordon, Pfeffer, McReynolds, Speary, Peters, Pitts, Bomboy, Bath, Baker, Boehm, Davis, Sage, Bardenhagen, Lightfoot.



*Charlotte
Jeanne
Metcalf*

Robert Brown

*Jeanne
Clark*

*Michelle
Duncan*



BILL BOWSER

CHEERLEADERS

The Tornado Tillies, girls pep club, have just finished one of their busiest and most progressive years of service under the direction of their sponsor, Miss Helen Glaser.

This year, because the Tillies are a representative group of the school and because of the increasingly large number of students in the high school, membership of the club was increased from sixteen to twenty. Members are chosen by a faculty committee to represent the school in sports and outside activities.

This year the Tillies have participated in several social functions including a chili supper given by the Chanute pep club, a picnic lunch at Riverside Park given by the Independence pep club.

As a special feature at the Chanute football and basketball games the Tillies, Drum corps and Drum Corps Understudies presented attractive drills at the halves of the games.

The Tillies prove their service to the school by ushering, at such activities as the Annual Teachers Convention held in Coffeyville this year, Class plays, High School Band Concert, Dunbar play, and a play sponsored by the American Association of University Women

The Radio was the theme for the annual Tillie Reunion held at the Hotel Dale on Thanksgiving morning when 20 of the active members and 56 of the alumni were present.

Members of the club this year include Virginia Ford, president; Shirley Karns, vice-president; Gertrude Hudson, recording secretary; Blanchetta Fair, reporting secretary; Elizabeth Adkins, treasurer; Marjorie McGrew, sergeant-at-arms; Florence Bartholow, Mildred Duncan, Mary Jane Cape, Charlotte Jean Metcalf, Zita Ann Lowry, Betty Ann Blount, Dolretta Pyatt, Ruth Virginia Huddleson, Annella Blanton, Geraldine Smith, Phyllis Ann Haney, Mary Jewell Robb, Rhoda Lee Morrison, and Jeanne Clark.



JIM PFEFFER

SOPHOMORE CLASS OFFICERS



ROY ELLIS, *President*

HORACE HUGGINS, *Vice President*

DOROTHY WALTON, *Secretary*

EARL SHELLY, *Sponsor*

The death of their fellowclassman, Paul Brocaw, who was killed in a motor car accident, constituted the sole tragedy of the school year for the class.

Several class assembly programs were given during the year and one general assembly was presented with more than a hundred voices contributing to the program.

The class has been well represented in the various organizations and activities during the school year. Sophomores make up a portion of the Drum Corps, Tornado Tillies and Swimming Squad. Three members of the Male Quartet are underclassmen and almost the entire second basketball squad was Sophomores .

IN MEMORIAM



PAUL BROCAW

results of the nine tournaments attended. The places won by the contenders in the various tournaments and the names of the individuals composing the teams are as follows:

Pittsburg Tournament—First place, won by Helen Banowetz and Jack Krigel upholding both affirmative and negative.

Coffeyville Tournament—Helen Banowetz and Jack Krigel went undefeated to semi-finals. Withdrew as courtesy to visitors.

Winfield Tournament—First place, Elizabeth Adkins and Lillian Rowland upholding both affirmative and negative.

Wellington Tournament—First place, Donald Mitchell and Lillian Rowland; second place, Elizabeth Adkins and Jack Krigel.

Parsons, Southeast Kansas League District Tournament—Third place, Lillian Rowland, Helen Banowetz, Elizabeth Adkins and Jack Krigel.

Other tournaments attended were held at Springfield, Mo., Topeka, Emporia, and Miami, Okla.

With the exception of Chanute, who won the district tournament and impaired Coffeyville's going to the state meet, the team has won more firsts than any other team in the state.

Field Kindley High takes its hat off to these students wishing for an even better and more successful season next year.

ELIZABETH ADKINS LILLIAN ROWLAND HELEN BANOWETZ JACK KRIGEL



Top row, left to right: Nonie Blanton, Jeanne Clark, Edward Terrar, John Gillam, Richard Liebert, Helen Hall, Lillian Rowland, Jack Krigel, Clark Hendrix, Helen Banowetz, Elizabeth Adkins, Wayne Bogue, Donald Mitchell, Elsie Mae White, Geraldine Smith.

Seated: Madge Crow, Frieda Schuetz, Dorothy Newberry, Zita Ann Lowry, Marie Bond, Jack Coyle, Gerald Clausing, Marjorie Karns, Kathleen Dixon, Selda Paulk, June Paulk, Winnie Lou Carter.



Girl Reserves Achieve

lofty objectives in the past year

A club in which every girl in school may become a member is the Girl Reserves, a character-building organization having a membership of 205 girls under the sponsorship of Helen Larson, Hazel Curtis, Ellen Penn, Jane Dale and Helen Glaser.

In addition to taking an active part in school affairs during the past year, the group has worked on such worthy projects as delivering baskets to needy children at Easter and making gifts to send to unfortunate children on various other holidays.

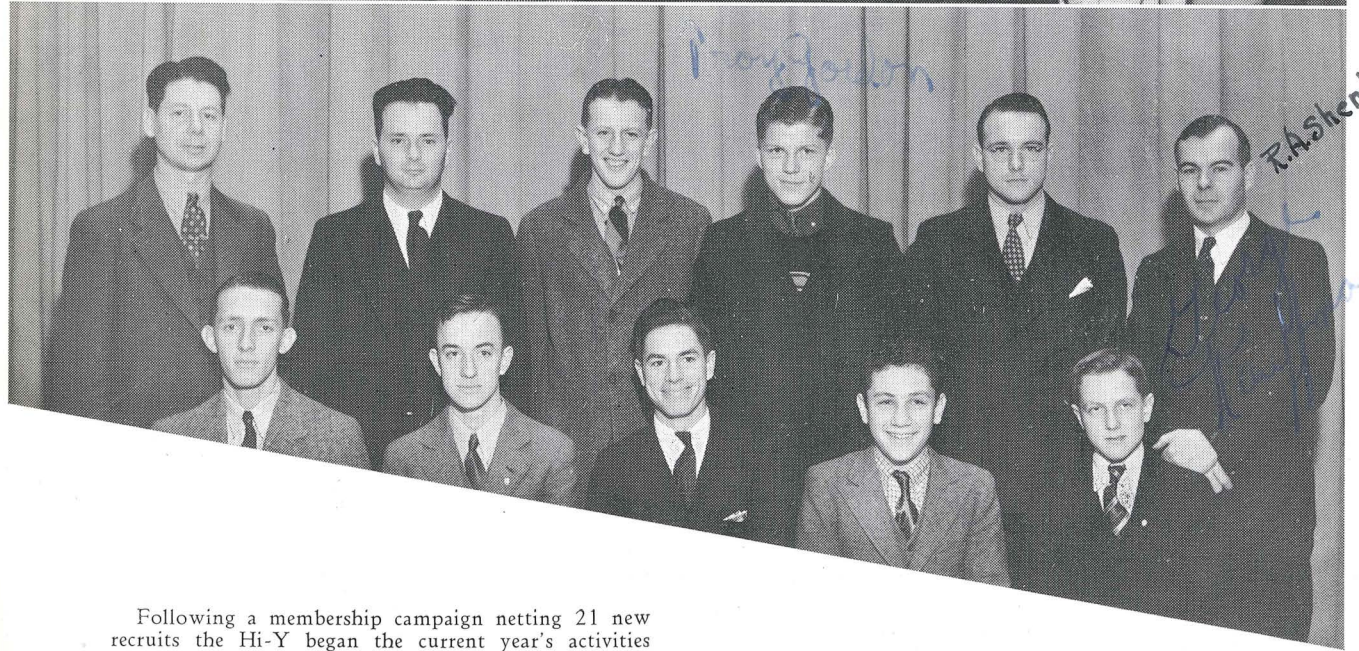
The membership is divided into six committees,

the service committee being the one through which the money for all projects has been raised.

A winter conference at Iola and the annual Mother-Daughter Banquet were the important events on the G. R. calendar.

The Girl Reserve cabinet and its sponsors pictured above: Top row: Helen Glaser, Ruth Douglas, Glenna Holt, Bonnie Ryan, Erna Greisen, Helen Larson, Hazel Curtis, Constance Powers.

Bottom row: Rachel Henderson, Treva Schneider, Ruth Bowen, Virginia Hurley, Alberta Hall, Margaret Ingmire, Pauline Aduddell, Nonie Blanton.



Following a membership campaign netting 21 new recruits the Hi-Y began the current year's activities with a "stag" party in the gym.

The ensuing month the Annual Hi-Y Father and Son Banquet was held with 55 "dad's and kids" present.

In December all officers attended the conference at Howard, Kansas.

By the sale of football and basketball schedule pencils the club boosted athletics and increased the treasury fund enough to send the 1937-38 president, Bill Bowser, to the Officers' District Conference at Yates Center. Joe Peters, vice president for 1937-38, attended a session at Camp Wood last summer.

The sponsors and active club members may also be credited with the presentation of two broadcasts, one in co-operation with the Girl Reserves, and another by the Altamont Hi-Y organization.

Cabinet members and sponsors pictured above—Top row: F. A. Thorne, G. N. Abbot, Horace Huggins, Troy Gordon, R. W. Myers, R. A. Shenk.

Bottom row: Joe Peters, Robert Maher, Leon Niswonger, Bill Bowser, George Kauffman.



Eloise Black
 Dorothy Newberry
 Evelyn Livingston

Bette Scott

Virginia Smith
 Frona Smith
 Marjorie McGrew

Eileen Ridgway
 Jean Searcy
 Betty Burton

Elinor Kirby

Outstanding events of the year were the Pittsburg and Lawrence play days, a tea given in honor of the incoming sophomores, and the sponsoring of the field day for the grade schools.

The organization was sponsored this year by Miss Mary Virginia Smith and the following student officers:

Marjorie McGrew, president; Elinor Kirby, vice-president; Eloise Black, secretary; Jean Searcy, treasurer; Betty Burton, point system manager; Frona Smith, volleyball manager; Dorothy Newberry, tennis manager; Evelyn Livingston, ping pong manager; Bette Scott, outdoor minor sports manager.

Other organized activities sponsored by the G. A. A. are swimming, horseshoes, and archery.

A large per cent of the fifty active members of tht G. A. A. received awards this year.



Kindley's "Little Symphony" Heard In Four Enjoyable Concerts



Appearance by the Field Kindley Orchestra this year included one on a Parent-Teacher Association program, a brief concert for the State Teachers Convention, a forty-five minute radio broadcast, and a public concert during Music Week. The orchestra is made up of eighty-five students under the direction of C. J. McKee.

Front row: Bartle, Erickson,
Brighton, Ellis, Vediner, Hickey.



TUMBLERS

Top row, left to right: Whitmore, Snider, Simpson, Thompson, Martin, Church.

Second row: Coach LeClere, Vediner, Thomas, Tatum, Ellis, R. Gillette.

Front row: Drouillard, Sykes, Woods, Hunt, W. Gillette, Warwick, Tilcock.

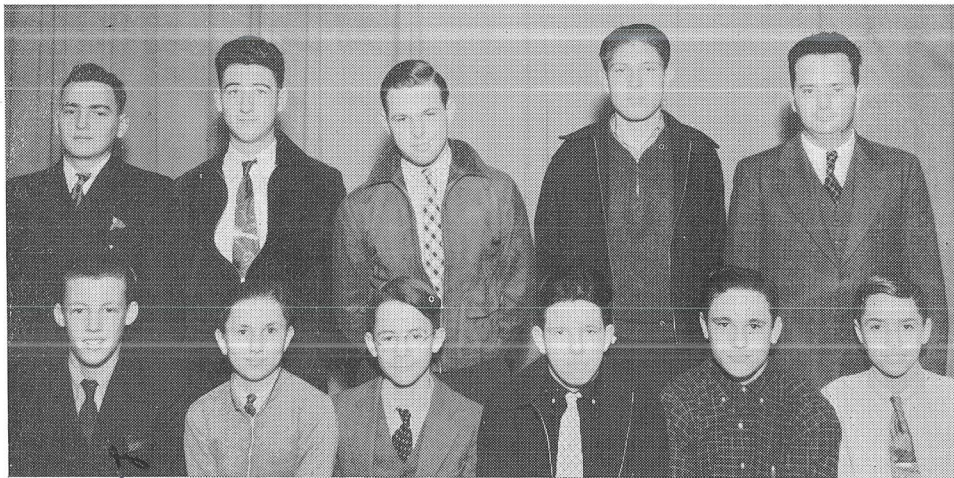
SWIMMERS

Standing, left to right: Coach LeClere, Boehm, Bettisworth, Fawcett, Donaldson, Nicolas, Fry.

Sitting: Mitchell, Warwick, Benedict, Woods, Simpson, Bell, Winters.
Sinking: Snider, Harden, Lightfoot, Perry, Whitmore, Crowder, Burt, Potter.



Marjorie Myers, *Queen* Howard Ehart, *King*
 Sheehan Bowser Sims Crow Jackson Plattner Black



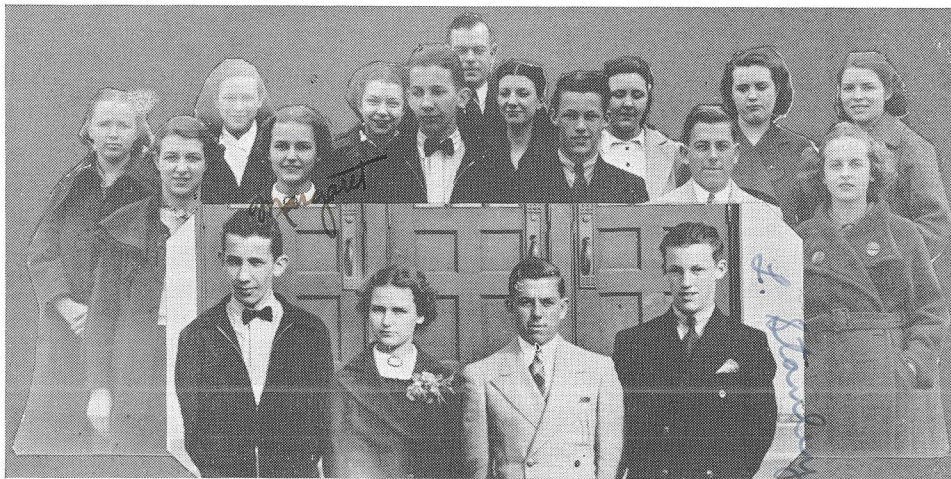
Top Row: ROBINSON, HOPKINS, PERRY, COLBURN, ABBOTT.
 Bottom Row: STANLEY, DOUGLAS, EDWARDS, GROTH, SNIDER, BECKETT.

Photography Novices

The Photography Club of the Field Kindley High Sschool was reorganized this year under the supervision of R. A. Shenk, teacher of chemistry and physics.

The objective of this club is to create a finer technique in the taking and developing of pictures.

The officers of the club are: President, Lawrence Stanley; vice president, Bob Haney; secretary, Harley Samuels; and treasurer, Margaret Thompson.



HANEY THOMPSON SAMUEL STANLEY

Ah! Spring



Graduates

Senior Activities

Dunbars

Kindleg Singers

Spring Sports

N. H. S.

Thirty



TROY GORDON, *President*
ELIZABETH ADKINS, *Vice-President*
MARTHA HAYDEN, *Secretary*
BETTY GREGORY, *Sponsor*

THIRD ROW: VIRGINIA HURLEY, LOIS KENDRICK, DORIS RYDALL, SALLIE MASSET, HAROLD MORRIS,
SELDA PAULK, DORIS POWELL.
FOURTH ROW: CECILIA ROBERTS, HARLEY SAMUELS, BETH SCHOOLEY, LEROY SMITH, MARGARET STEB-
BINS, FRANK TILCOCK, HENRIETTA WEIBLE.



Glass of Nineteen thirty-sev



FIRST ROW: ELIZABETH ADKINS, CLARENCE BARDENHAGEN, ALLEN BETTISWORTH, ELOISE BLACK, LYL A. CLARK, ISABELLE DEWLEN, BETTY JANE DOERING.

SECOND ROW: HERBERT DONNELLY, CHARLES ECKHARDT, HOWARD EHART, BLANCHETTA FAIR, TROY GORDON, JIM HAMLET, BOB HANEY.

THIRD ROW: ROBERT HARDING, FLOYD HARRIS, LEE HEINZ, RUTH VIRGINIA HUDDLESON, CHARLES KNAPP, MARJORIE MCGREW, RAYMOND NICOLAS.

FOURTH ROW: MARY JANE NORFLEET, ALICE PASSMORE, VERNON PLATTNER, JACK SAGE, ILANE SEABORN, JACK STARMER, NORMA WEST.

POWERS, DOLRETTA PYATT, MOSES SMITH.

FOURTH ROW: TREVA SCHNEIDER, HAROLD SCHOCKEY, EVELYN SITZ, EILEEN THOMASON, MILDRED WILLIAMS, HAZEL WOOD, BETTY YORK.



Class of Nineteen thirty-seven



FIRST ROW: WILMA ALLEN, HAZEL BARGER, FLORENCE BARTHOLOW, ELEANOR BETTISWORTH, CATHERINE BLACK, RALPH BROOKS, BETTY CILLESSEN.

SECOND ROW: ORVILLE CRAMER, DOROTHY COFFEY, JANE HELEN DAVIES, MARGUERITE DILLON, RUTH DOUGLASS, ARVIN EPPERSON, NADINE HICKS.

THIRD ROW: ANNA MAE HOLT, HELEN KALLENBERGER, ELINOR KIRBY, NELLE LIVINGSTON, MARJORIE MYERS, ELIZABETH PAHMEYER, ROBERT ROBINSON.

FOURTH ROW: EILEEN ROMMEL, CLEO RYAN, EVELYN SCHOLEY, FRIEDA SCHUETZ, HOWARD SWIFT, MYRTLE TOWNSON, JAMES WALTRIP.

Class of Nineteen thirty-seven

MAHER, RUTH MCGHEE, GLENNA LEE PERRY.

FOURTH ROW: NADINE RABERDING, JAMES SIMPSON, ROBERT SCHNEIDER, EDNA MAE SATCHEL, LOUIE SHEEHAN, FAYE VARBEL, EARL WOOD.



Glass of Nineteen thirty-seven



FIRST ROW: PAUL CARTER, GAYLE COOKE, MARGARET EMMING, VIRGINIA FORD, RODNEY HASTINGS, HERSCHEL HICKS, GERTRUDE HUDSON.

SECOND ROW: CARL JOHNSON, TOMMY KAUFFMAN, LEE McCULLY, WYNN MACE, HARRY MASTERS, HERBERT MEEK, CHARLES MOHLER.

THIRD ROW: EDWARD PERRY, PAULINE RICHARZ, MARY JEWELL ROBB, CECILIA ROBERTS, LILLIAN ROWLAND, EUNICE SANDERS, CLEO RYAN.

FOURTH ROW: MARJORIE SAUNDERS, BILL SINGLETON, LOUISE SMITH, ANN SPRAGUE, MAXINE TAYLOR, PORTER TITUS, ELSIE MAE WHITE.

Glass of Nineteen thirty-seven

FOURTH ROW: OLETHA JONES, LAURA LONGACKER, MILDRED MASTERS, PRENTICE MEDLOCK, ESSIE LEE
TAYLOR, HOWARD THOMPSON, GEORGE WOODS.

George Woods



Class of Nineteen thirty-seven

Tom Allin
Inez Anderson
Georgia Bartlett
True Bazel
Jack Brown

Charles Fortn
Ernest Frisbie
Austin Hastings
Bernard Hayden
Billy Hendryx

Frederic Jolly
Melvin Kallenberger
Ruby Lawrance
Frank Lawrance

John Speary
Robert Thatcher
Stephen Thompson
Art Yonkers



"Man or Mouse" Sensational Success



Histrionic artists of the senior class scored a sensational hit on April 13 when they presented a three act comedy, "Man or Mouse," under the direction of Miss Lydia Back.

Members of the cast were, left to right, back row: Herschel Hicks, John Speary, Robert Maher, Leon Niswonger, Ruby Englund, Gerald Clausing, Lillian Rowland, Jack Krigel, James Simpson, Lee Heinz, Allen Bettisworth, Clarence Bardenhagan, and Frank Tilcock.

Front row: Betty Doering, Mary Brooks, Eugene Dickens, Elsie Mae White, Helen Hall, Helen Banowetz, Gertrude Hudson, Leah Pruett, Martha Hayden, and Derrell Hughey.

The following eight firms have contributed, by their support of school publications, to a larger and finer Purple "C", the yearbook of the Field Kindley High School:

Sears
Hamlin Jewelry
Strasburger's

Morgan & Hampton
Perrill-Mills

Cole's
Superior Studio
Stott's

In 1932 the organization became a regular high school club sponsored by faculty members. This year Carrie Weaver and C. P. Neis were the club sponsors.

Officers of the club are: President—Lillian French; vice-president—Mildred Masters; student congress representative—George Woods, Jr.; alternate—Prentice Medlock; secretary—Florence Drake; reporter—Essie Lee Taylor and sergeant at arms, Wayman Caliman.

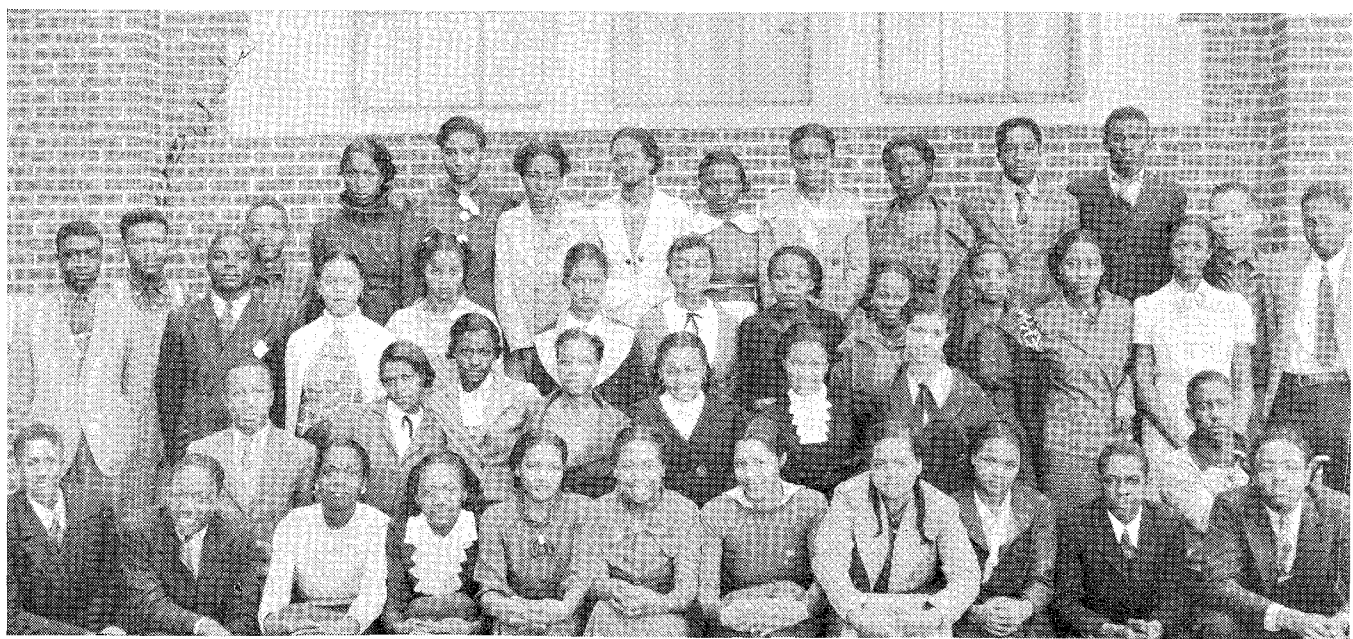
This year's activities included a broadcast; two assembly programs; one in the high school and the other at the Cleveland school; the annual play entitled "That's the Ticket," composed of the following cast: Theodus Masters, Maudell Strothers, Prentice Medlock, Roscoe Vann, Ovelton May, Lillian French, Livis Owen, and Florence Drake.

Two senior members of the Dunbar club, Lillian French, and Prentice Medlock, were elected this year to Sigma Phi Honor Society.

The banquet honoring the Senior High School and Junior College graduates was held at the Field Kindley Memorial High school, followed by a dance.



LILLIAN FRENCH
PRENTICE MEDLOCK



First row: Elizabeth Campbell, Hattie Davis, Margaret Woods, Ira May Andrews, Naomie Williams, Eleanor Briggans, Darline Collins, Junior Owens, Delbert Johnson.
 Second row: William Woods, Robert Faulks, Lawrence Briggans, Robert Williams, Oletha Rowe, Pauline Cherry, Constance Burnham, Nancy Brooks, Verena Medlock, Everis Austin, Grace Mosley, Dola Monroe, Sarah Thompson, Wayman Caliman, Roscoe Vann.
 Third row: Andrew Boganey, Louise Neal, Dorothy Hale, Bertha Briley, Maudell Strothers, Margaret Roberts, Mapel Smith, Virgil Winters.
 Fourth row: Alferd Treece, George Woods, Verna Pursfzy, Waltha Strothers, Essie Lee Taylor, Mildred Masters, Lillian French, Florence Drake, Louise Rolison, Joseph Jones, Howard Thompson.



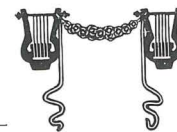
The girls chorus experienced as the major event of the year's activities, a trip to Pittsburg where its forty members participated in a Pre-Christmas program held there.

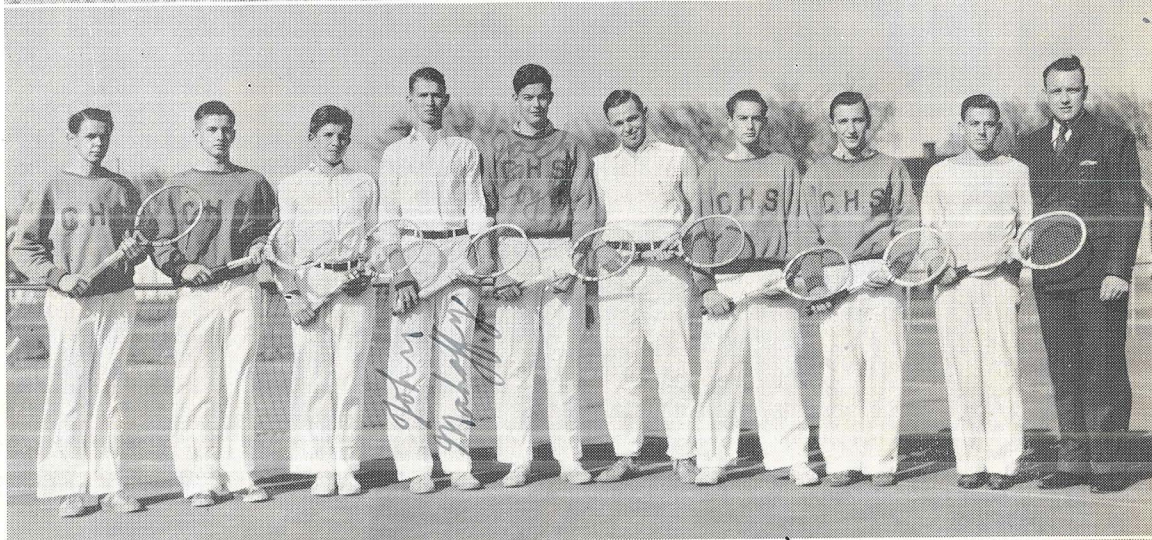
As a part of the school carnival the boys chorus provided a novelty sketch in song and chatter.

Representing the high school at Wichita which was the scene of the Southern Kansas Music Festival this spring, were Betty Cillessen, Jean Ray, Anne Mae Holt, Erna Greisen, Elinor Kirby, Selda Paulk, Martha Hayden, and Lee Heinz.

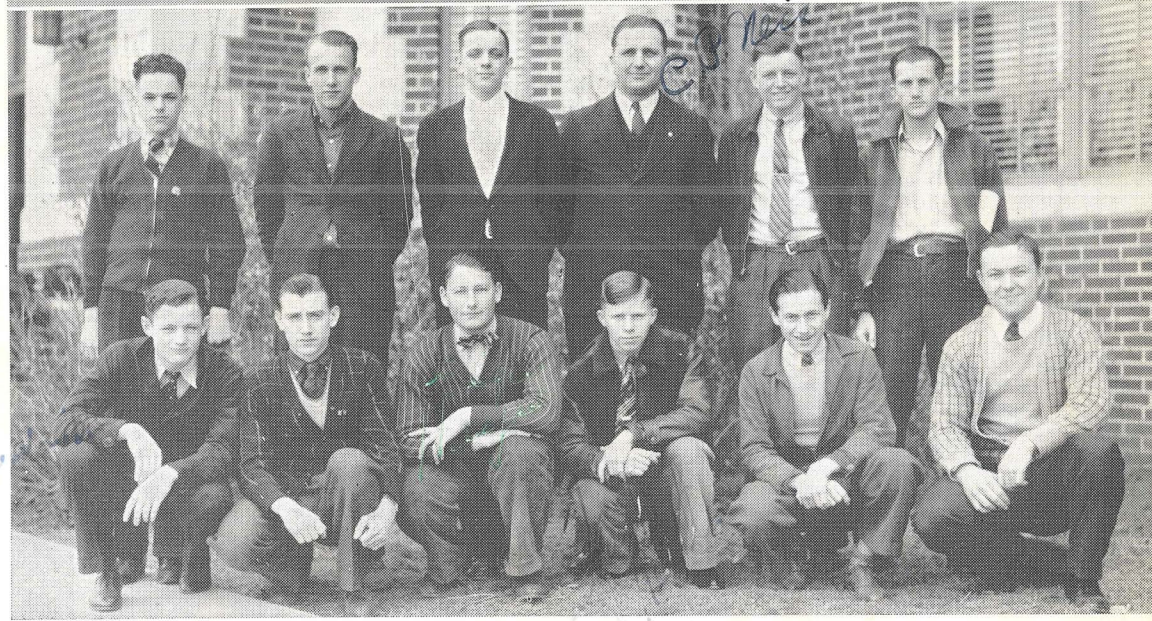
Within these two groups are smaller units known as the girls and boys quartets respectively. Composing the girls quartet are Martha Hayden, soprano; Selda Paulk, second soprano; Erna Greisen, first alto; and Elinor Kirby, second alto. Norma Mae Nelson accompanies the group at the piano.

The boys quartet includes Dewaine Braungardt, first tenor; Bill Bowser, second tenor; Lee Heinz, baritone; and Leland Hall, bass. Mary Jewell Robb is the piano accompanist. These two are among the more progressive and active groups of the school.





Robert C. Myers



TRACK

Top row, left to right: Gillette, Winters, Benedict, trainer, Davis, Lightfoot, Warwick, Bell, Pitts, Hamlet, Sage.
 Second row, left to right: Peters, Boehm, Tatum, Gann, Card, Burgess, Bardenhagen, Bartle, Greer, Brodhagen.
 Front row, left to right: Spoonamore, Kersnick, McCulley, Miller, E. Pitts, Hogan, Baker, Woods, Richardson.

TENNIS

Left to right: Mitchell, Plattner, Martin, Mahaffey, Coyle, Perry, Brighton, Singleton, Samuels, Myers, coach.

GOLF

Back row, left to right: Liebert, Bettisworth, Daniel, Neis, coach, Bostwick, Hudgings.
 Front row, left to right: Weible, Knapp, Hayes, Keith, Mohler, Moore.

Bot.



Top row: McReynolds, Knapp, Gordon, Eckhardt, Maher, Logsdon, Krigel, Liebert.
Middle: Adkins, Ford, Myers, Reiter, Winters, Holt, Banowetz, Rowland, Paulk, Kirby, Bartholow.
Bottom: Doering, Clark, Black, Ingmire, Schneider, Lowry, Hamlet, Crow, Englund, Nelson.

Scholarship, Leadership, Character, and Service are the four objectives of the National Honor Society. In order to qualify for election into the society, a student must rank in the upper one-third of his class, having "B" average in scholarship. Leadership is exhibited by displaying a degree of initiative in classroom in school whenever called upon.

Not more than 15% of any graduating class may be members of the society. The first election from a class is limited to five percent of the class and is held in the second semester of the junior year. During the first semester of the senior year the second election is held, the limit this time being 10% of the class. During the second semester of the senior year a third election is held. Those selected must not bring the total to more than 15% of the class.

Members of the class of 1937 chosen during their junior year were: Betty Jane Doering, Helen Banowetz, Lillian Rowland, Jack Krigel, Charles Knapp, Norma Lee Nelson, Marjorie Myers, and Elizabeth Adkins. Officers for the past school year were: Charles Knapp, president; Jack Krigel, vice-president; and Lillian Rowland, secretary.

During the first semester of senior year the following were chosen: Elinor Kirby, Virginia Ford, Vernon Plattner, Treva Schneider, Charles Eckhardt, and Robert Maher.

Members of the class of 1938, elected this year were: Jeanne Clark, Madge Crow, Betty Hamlet, Richard Liebert, Max Logsdon, Zita Ann Lowry, Bette Jean Scott, and Jill Ann Winters.

Those chosen during their last semester were: Florence Bartholow, Eloise Black, Ruby Englund, Troy Gordon, Glenna Holt, Margaret Ingmire, Earl McReynolds, Selda Paulk, and Anita Reiter.

Irene Richards
Lionel Seton

Josephine Smith
Marie Mahoney
Esther Davis

Kathleen (Kaye) East
Pauline Smallwood

Mildred Griswold
Lila Royce

Bernard Hardon

Ken Hilman
Alber

Anna Miller

Eltha Wehner
Gott
Zani

Stewart
Faulstich
Gortch

Darrell

Ray

Thirti

Narvona Good

Jim Young
Melba Gintan

Louis Thompson

Mary Ellen Baker

Augusta H.C.

Mary Lou Hoffman
"38"

John L. Zallenberger
"37"

Pearl Archer

Alberta Hall "38"

Alfred Orinson

Virginia Davis

Lucy Jeanne Baker

Le Von Foster Martin
Marian Fry '38

Margery Reed '38

Alice Mary Nash '39"

Constance

Summer

Richardson
B of

Opal Cutler

Leatha & Robert '38
Anta M. Smith

Mary C. Quinn

Virginia G. Baker