

Y  
E  
A  
R  
B  
O  
O  
K

Field Kindley High School

1935

*1934-1935*

It is the pleasure of the senior class to present to you the year book of 1934-1935. May it recall happy memories and pleasant friendships.

Committee:

*Iris Byler*

*Jack Kittell*

*Donald McCaslin*

*Orphena Perry*



*In appreciation of his loyalty and  
personal interest, we the seniors ded-  
icate the year book to our principal,  
Mr. W. W. Bass*

*W. W. Bass*

Superintendent of Schools

A. I. DECKER

Board of Education

MR. CHARLES D. ISE, *President*  
DR. H. J. BAGBY, *Vice President*  
MR. F. S. MITCHELL, *Treasurer*  
THELMA CREATH-MIFFLIN, *Clerk*

MR. BRAUM BENTLEY  
MR. L. B. BRANT  
MR. PAGE DOERING  
MR. BERT SHORES

Principal of Field Kindley High School

MR. W. W. BASS

Assistant Principal

MR. E. W. GRIGG

Staff

*Secretary*, Miss Ruth Maher  
*Treasurer*, Miss Mary Winters  
*Director of Activities*, Miss Florence Hoover  
*Sponsor of Year Book*, Miss Florence Hoover  
*Custodian of Building*, Mr. J. E. Fitzgerald

Departments

*Art*, Florence Penn  
*English*, Florence Hoover  
*History*, Clark Hendrix  
*Home Economics*, Gladys Cronemeyer  
*Industrial Arts*, Swan Highbaugh  
*Mathematics*, Carrie Webb  
*Modern Language*, Pauline Schuetz  
*Music*, Neil Branstetter  
*Science*, E. W. Grigg  
*Physical Education*, Jo Johnston

Class Sponsors

*Senior*, Pauline Schuetz  
*Junior*, Carrie Weaver  
*Sophomore*, Grace Price

Club Sponsors

*Athletic Club*, James LeClere  
*Alpha Sigma*, Florence Penn  
*"C" Club*, Leland Lewis  
*Commercial Club*, F. A. Thorne  
*Debate*, Clark Hendrix  
*Dramatic Coaches* { Naomi Daeschner  
                              { Clark Hendrix  
                              { F. A. Thorne  
*Drum Corps*, Ruth McFerren  
*Dunbar Club*, Carrie Webb  
*Fi Ki Players*, Naomi Daeschner  
*Girl Reserves* { Helen Larson  
                          { Hazel Curtis  
*Hi Y*, Merle Jackson  
*Le Cercle Francais*, Pauline Schuetz  
*National Honor Society*, Mary Shrum  
*Photography*, E. W. Grigg  
*Radio Club* { Fred Gabler  
                  { Archie Magnuson  
*Rhythmic Circle*, Jo Johnston  
*Science Club*, Grace Price  
*Sigma Phi*, Mary Shrum  
*Student Congress* { Florence Hoover  
                          { Pauline Schuetz  
*Tornado Tillies*, Helen Glaser  
*Tornado Tommies*, W. Frenton Currier  
*Transportation and Invention Club*, Dudley Cade  
*Travel Club*, Betty Gregory  
*Tri Eta*, Gladys Cronemeyer



LE CLERE HIGHBAUGH CADE JACKSON GRIGG THORNE LEWIS BRANSTETTER CURRIER HENDRIX  
 BASS WEAVER WEBB LARSON PENN CURTIS SCHUETZ GREGORY CRONEMEYER NEIS  
 HOOVER MAHER DAESCHNER HAGAR PRICE GLASER JOHNSTON SHRUM McFERREN

## Faculty

JAMES LeCLERE  
 Physical Education  
 Mathematics

SWAN L. HIGHBAUGH  
 Industrial Arts

DUDLEY CADE  
 Industrial Arts

MERLE JACKSON  
 English

E. W. GRIGG  
 Assistant Principal  
 Biology

F. A. THORNE  
 Commerce

LELAND LEWIS  
 Athletics  
 History

NEIL BRANSTETTER  
 Music

W. FRENTON CURRIER  
 Industrial Arts

CLARK HENDRIX  
 History

W. W. BASS  
 Principal

CARRIE WEAVER  
 English  
 History

CARRIE WEBB  
 Mathematics

HELEN LARSON  
 History

FLORENCE PENN  
 Art

HAZEL CURTIS  
 Commerce

PAULINE SCHUETZ  
 Modern Language

BETTY GREGORY  
 Home Economics

GLADYS CRONEMEYER  
 Home Economics

CHARLES P. NEIS  
 Social Science

FLORENCE HOOVER  
 English

RUTH MAHER  
 Secretary

NAOMI DAESCHNER  
 English

EVA LEE HAGAR  
 Commerce

GRACE PRICE  
 Science

HELEN GLASER  
 Mathematics

JO JOHNSTON  
 Physical Education  
 English

MARY SHRUM  
 Mathematics  
 History

RUTH McFERREN  
 Librarian



PASSMORE PERRY PERRY PULLEY RAY REITER REYNOLDS RICHARDSON ROBERTS RYMAN ROBERTS  
 SAUNDERS SCHMIDT SCHUETZ SHIVE SCHUTTNER SMART SMITH SMITH SMITH SPOONAMORE  
 SPRAGUE SPRAGUE STEEL STONG STUDEBAKER SUMPTER SEABORN STEWART

### Seniors

MARTHA PASSMORE  
 Girl Reserves 2-4  
 Operetta 2-3  
 Glee Club 2-3  
 Travel Club 3

MARILYN PERRY  
 Drum Corps Major 4  
 Student Congress 2  
 Girl Reserves 2-3  
 Intramural 3-4  
 Glee Club 2  
 Operetta 2

ORPHENA PERRY  
 Yearbook Staff 4  
 Student Congress 3  
 Girl Reserves 2-3-4  
 Intra-mural 3  
 Glee Club 2  
 Operetta 2

RUBY PULLEY  
 French Club 2  
 Travel Club 3-4

EVELYN RAY  
 French Club 2  
 Girl Reserves 3-4  
 Cabinet 4

PAUL REITER

FLOYD REYNOLDS  
 French Club 2-3-4  
 Stage 4  
 Campus Life 4

DORRIS RICHARDSON  
 Humor Club 2  
 Dramatics Club 3-4  
 Campus Life 3-4  
 Intra-murals 3-4

WILMA WYNONA ROBERTS  
 Student Congress 2  
 Alpha Sigma 4  
 Girl Reserves 2-3-4

WILMA IRENE ROBERTS  
 Orchestra 2-3-4  
 Travel Club 3  
 Girl Reserves 4

MARY K. RYMAN  
 Girl Reserves 2-4  
 Travel Club 3  
 Intra-murals 2-3-4  
 Glee Club 2-4  
 Golf Club 4  
 "Honor Bright" 4

J. B. SAUNDERS  
 Biology Club 2  
 Travel Club 3  
 Radio Club 4  
 Band 2-3-4

WINIFRED SCHMIDT  
 Electricity Club 2-3  
 Hi Y 4  
 Travel Club 4

DAVID SCHUETZ  
 Wrestling 2  
 Travel Club 4

LORENE SCHUTTNER  
 Altamont, Kans., 2-3  
 Rhythmic Circle 4

AMOS SHIVE  
 Blue Jays 2  
 Biology Club 2  
 Fi Ki 3-4

MARY LOUISE SMART  
 Girl Reserves 2-3  
 Cabinet 4

EDWIN SMITH  
 Travel Club 3-4

NADEAN SMITH  
 National Honor Society 4  
 Tornado Tillies 4  
 Rhythmic Circle 4  
 Campus Life 4  
 "Honor Bright" 4  
 Intra-murals 2-3-4

ETHELYN SMITH  
 Cercle Francais 2  
 Girl Reserves 3-4  
 Glee Club 2

JOHN SOURBEER  
 Travel Club 3-4  
 Treas. of class 2

DARLENE SPOONAMORE  
 Girl Reserves 2-3-4  
 Glee Club 2-3-4  
 Operetta 2-3-4

BILL SPRAGUE  
 Student Congress 3  
 Travel Club 2-3  
 Photography Club 4

KATHRYN SPRAGUE  
 Spanish Club 2-3  
 Girl Reserves 4  
 Intra-murals 2-3-4

BILL STEEL  
 Debate 2-3-4  
 National Honor Society 3-4  
 Tornado Tommies 3-4  
 French Club 2  
 Glee Club 3  
 "Honor Bright" 4

JOSEPH WAYNE STONG  
 Football 3  
 Athletic Club 3-4  
 Intra-murals 2-3  
 Wrestling 2  
 Glee Club 2-3

SHANNON STUDEBAKER  
 Travel Club 2-3-4  
 Tornado Tommies 4  
 Orchestra 2-3

MARVIN SUMPTER  
 Football 2-3-4  
 Basketball 2  
 Transportation Club 4

JUSTINE SEABORN  
 Junior Play 3  
 Debate 3-4  
 Rhythmic Circle 4  
 Fi Ki 3

DORIS STEWART  
 Newton, Kans., 2  
 Girl Reserves 3-4  
 Intra-murals 3-4



MITCHELL MOORE MORGAN MORREY MORRIS MORRISON MOSIER MURRAY MURDOCK  
 McCARTER McCASLIN McCORMICK McCULLOUGH McCULLEY McDANIEL McDANIEL McGrATH McGrATH  
 McMillan McMILLAN McWhorter NICOLAS NELSON NIXON NORTON NUNNERY

## Seniors

ROBERTA MITCHELL  
 National Honor Society 4  
 Tornado Tillies 3  
 Pres. 4  
 Girls' Quartette 3-4  
 Orchestra 2-3-4  
 "Honor Bright" 4  
 Operetta 2-3-4

MARGARET MOORE  
 Campus Life 4  
 Girl Reserves 2-3-4  
 Orchestra 2-3-4  
 Intra-murals 2-3-4  
 Operetta 3-4

JEANETTE MORGAN  
 Tornado Tillies 4  
 French Club 3  
 Golf Club 2  
 Class Treas. 3  
 Operetta 2-3-4

ALFRED MORREY  
 Student Congress 3  
 Science Club 3-4  
 Spanish Club 2

RAYMOND MORRIS  
 Stage 4  
 Photography Club 4  
 Wrestling 2  
 Biology Club 3

MARGARET MORRISON  
 Hammond, Ind., 2-3  
 Girl Reserves 3  
 Fi Ki Pres. 4  
 Glee Club 3-4  
 Operetta 3  
 Golf Club 4

WILBUR MOSIER  
 Debate 2-3-4  
 Student Congress 2-4  
 Tornado Tommies 3-4  
 V. Pres. 3  
 Class Sec. 2  
 Class Pres 4  
 National Honor Society 4  
 Junior Play 3

HELEN IDA MURRAY  
 Spanish Club 2-3  
 Travel Club 4

BESSIE MURDOCK  
 Commercial Club Pres. 4  
 Tri Eta 2-3  
 Golf Club 2  
 Intra-murals 2-3

GRACE McCARTER  
 Fi Ki Sec. 3  
 Travel Club Sec. 4  
 Rhythmic Circle 4  
 Drum Corps 4  
 Operetta 2-3  
 Intra-murals 3

DONALD McCASLIN  
 Student Congress 3-4  
 Class Treas. 4  
 Basketball 2-3-4  
 Travel Club Treas. 3  
 "C" Club 2-3-4

MARGARET McCORMICK  
 Wagoner, Okla., 2-3  
 Travel Club 4

JACK McCULLOUGH  
 Travel Club 2-3-4

JUANITA McCULLEY  
 Girl Reserves 2-3-4

JACK McDANIEL  
 French Club 2

MONA McDANIEL  
 Girl Reserves 2-3  
 Pres. 4

FIDELIS McGrATH  
 Girl Reserves 2-3-4

MICHAEL McGrATH  
 Radio Club 3-4

WILMA McMILLAN  
 Orchestra 2-3-4  
 Glee Club 4  
 Fi Ki 3-4  
 Girl Reserves 2

WILMUR McMILLAN  
 Hi Y 2-3-4  
 "Honor Bright" 4

RAYMOND McWhorter  
 Hi Y 2-3  
 Glee Club 2  
 Photography Club 4  
 Intra-murals 2-3

DALE NICHOLAS  
 Football 3-4  
 "C" Club 3-4  
 Fi Ki 3

DORIS NELSON  
 Girl Reserves 3-4

BONNIE JEAN NIXON  
 Muskogee, Okla., 2-3  
 Girl Reserves 3-4

RICHARD NORTON  
 Travel Club 2-3-4

BILL NUNNERY



ENGLAND ENGLAND ENGLAND FEIL FIEBACH FISCUS FORD FITZPATRICK GARDNER  
 GARTLEY GOCKE HALLORAN HALLORAN HANES HANES HARDING HARRIS HARDIN  
 GRAHECK HALE HEALY HOLEMAN HERRING HULSE JACKMAN JAGGERS

## Seniors

GRANT ENGLAND  
 Radio Club 2-3  
 Pres. 4  
 Intra-murals 2-3-4

VERA ENGLAND  
 Tri Eta 2-3-4  
 Orchestra 2-3-4

ELDON ENGLAND  
 Wrestling 2-3  
 Hi Y 4  
 Stage 4  
 Intra-murals 2-3-4

ALENE FEIL  
 Intra-murals 2-3  
 Commercial Club 4

RALPH FIEBACH  
 Class Officer 2-3  
 National Honor Society 4  
 Basketball 4  
 Orchestra 2-3-4

EFFIE FISCUS  
 Girl Reserves 3

EDWARD FORD  
 Spanish Club 2  
 Fi Ki Players 3  
 French Club 4

FRENIA FITZPATRICK  
 Girl Reserves 3

THELMA GARDNER  
 Orchestra 2-3  
 Girl Reserves 2-3-4  
 Rhythmic Circle 4

FRANCES GARTLEY  
 Tornado Tillies 3-4  
 Orchestra 2  
 Student Congress 2  
 Golf Club 2

PHYLLIS GOCKE  
 Girl Reserves 2-3  
 Sec. 4  
 Glee Club 2  
 Student Congress 2-3-4  
 Operetta 2  
 Intra-murals

ELEANOR HALLORAN  
 Orchestra 2-3-4  
 Glee Club 2  
 Drum Corps 4  
 Aviation Club 2  
 Tri Eta 3  
 Rhythmic Circle 4

MARIE HALLORAN  
 Orchestra 2-3-4  
 Glee Club 2  
 Drum Corps 4  
 Aviation Club 2  
 Tri Eta 3  
 Rhythmic Circle 4

WILMA GENE HANES  
 Tri Eta 2  
 Glee Club 2  
 Commercial Club 4  
 Intra-murals 2

HELEN LORENE HANES  
 Tri Eta 2  
 Glee Club 2  
 Commercial Club 4  
 Intra-murals 2

LOREN HARDING  
 Hi Y 4  
 Travel Club 2-3

JAMES HARRIS  
 Intra-murals  
 Blue Jays 2

KATHRYN HARDEN  
 Caney 2-3  
 French Club 4

BILL GRAHECK  
 Travel Club 2-3  
 Tornado Tommies 4  
 V. Pres. 4  
 Junior Play 3

FAYE HALE  
 Girl Reserves 3-4  
 Glee Club 3  
 French Club 2  
 Intra-murals 3

ADELAIDE HEALY  
 National Honor Society 3-4  
 Tornado Tillies 3-4  
 Debate 3-4  
 "Honor Bright" 4  
 Junior Play 3  
 Ass't. Yell Leader 4

HAZEL HOLEMAN  
 Girl Reserves 2  
 Travel Club 3-4

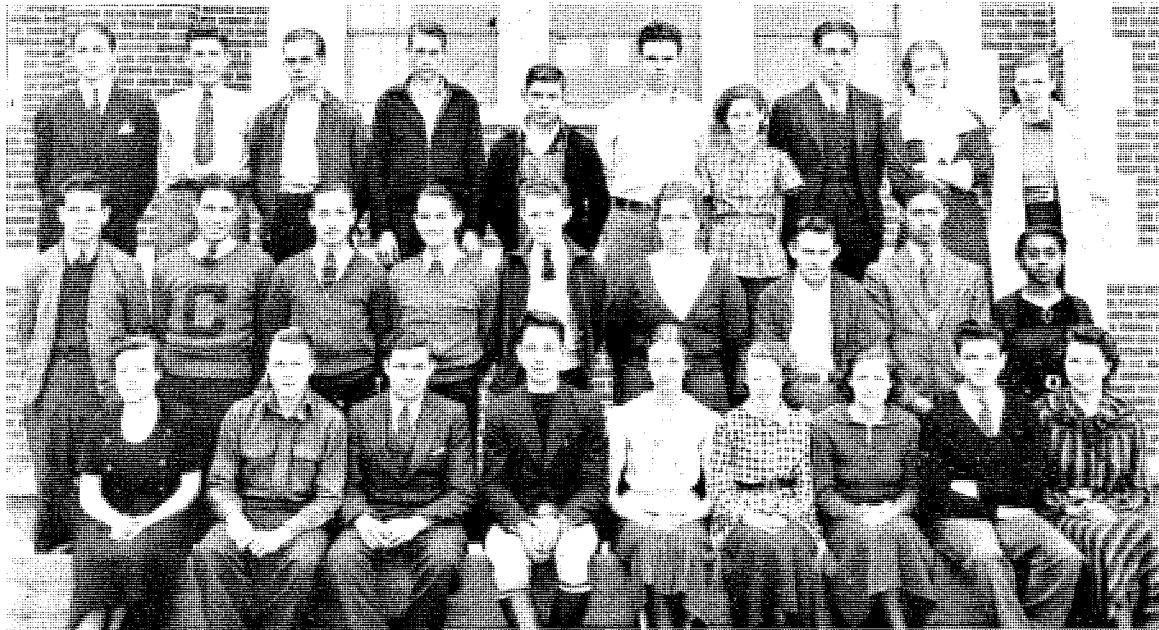
HELEN HERRING  
 Spanish Club 2-3  
 Travel Club 4  
 Intra-murals 2

RUTH HULSE  
 Girl Reserves 2-3-4  
 Orchestra 2-3  
 Intra-murals 2

FRANCES JACKMAN  
 Spanish Club Pres. 2  
 Intra-murals 2-3  
 Girl Reserves 4

NORMA JAGGERS  
 Tri Eta 2  
 Commercial Club Sec. 4  
 Intra-murals  
 Glee Club 2





JARMAN JOHNSON JOHNSON JOHNSON JOHNSON JOHNSON JONES JORDAN KARNs KEITH KIRBY  
 KITTELL KITCHENS KNIGHT KNOTTs KRIGEL LAMB LATIMER LEWIS LAWTON  
 LIVELY LOOP LYBERGER MADDOX MAHAFFY MAHAN MASTERS MERCER MISCH

### Senior

LISLE JARMAN  
 CHARLES JOHNSON  
 Football 2-4  
 Student Congress 3  
 Debate 4  
 Junior Play 3  
 "Honor Bright" 4  
 Fi Ki Club 4  
 EARL JOHNSON  
 Tornado Tommies 4  
 Student Congress 2-4  
 Hi Y 2  
 Radio Club 3  
 Stage Mgr. 3  
 EVERETTE JOHNSON  
 Electricity Club 3  
 Radio Club 4  
 CARL JOHNSON  
 Transportation 4  
 JOHN JONES  
 Football 2-3-4  
 Orchestra 2  
 Photography 4  
 Intra-murals 2-3  
 VIRGINIA JORDAN  
 Tri Eta 2-3-4  
 Glee Club 2  
 Intra-murals 3-4  
 ED KARNs  
 Student Congress 2, 4  
 Tornado Tommies 4  
 Hi Y 2-3

ROSEMARY KEITH  
 Girl Reserves 2  
 Spanish Club 3  
 Alpha Sigma 4  
 Glee Club 2-3-4  
 ANN KIRBY  
 Tornado Tillies 4  
 Cheer Leader 4  
 Football Queen 4  
 Glee Club 2-3-4  
 French Club 2-3  
 Operetta 2-3-4  
 JACK KITTELL  
 "Honor Bright" 4  
 Junior Play 3  
 Student Congress 2-3-4  
 Yearbook Staff 4  
 Intra-murals 2-3-4  
 Pres. 4.  
 Tornado Tommies 3-4  
 LOREN V. KITCHENS  
 Football 4  
 Intra-murals 2-3  
 "C" Club 4  
 RICHARD CLARY KNIGHT  
 Tornado Tommies 3-4  
 Orchestra 2-3  
 Hi Y 2-3-4  
 Stage Mgr. 3  
 GEORGE KNOTTs  
 Boys' Quartette 2-3-4  
 Orchestra 2-3  
 Band 2-3-4  
 Operetta 3

MELVIN KRIGEL  
 Band 2-3-4  
 Orchestra 2-3-4  
 Junior Play 3  
 French Club 2-3  
 Science Club 4  
 GLADYS B. LAMB  
 Girl Reserves 2-3-4  
 LEO LATIMER  
 Chanute 2  
 Osawatomie 3  
 Fi Ki Players 4  
 DONARETHA LAWTON  
 Glee Club 2-3-4  
 Operetta 2-3-4  
 Dunbar Club 2-3-4  
 Dunbar Club 2-3-4  
 "Gay" 4  
 CLIFFORD LEWIS  
 Independence 2-3  
 Dunbar Club Pres. 4  
 "Dying to Live" 4  
 Intra-murals 4  
 RUTH LIVELY  
 Girl Reserves 2-3-4  
 Intra-murals 2-3-4  
 DONALD LOOP  
 Radio Club 4  
 Hi Y 4  
 JAMES M. LYBERGER  
 Pierce City, Mo., 2-3  
 Science Club 4

MELVIN MADDOX  
 Tornado Tommies 2-3-4  
 Glee Club 2-3  
 Quartette 2  
 Yell Leader 2-3-4  
 Intra-murals 3-4  
 LOUISE MAHAFFY  
 Girl Reserves 3-4  
 French Club 2  
 Glee Club 2-3-4  
 Student Congress 4  
 Splash Club 3  
 PAULINE MAHAN  
 Alpha Sigma Pres. 4  
 Girl Reserves 2-3  
 PAT MASTERS  
 Drum Corps 4  
 Rhythmic Circle 4  
 Splash Club 2  
 Campus Life 4  
 Intra-murals 2-3-4  
 Pres. 4  
 BILLY MERCER  
 Intra-murals 2-3-4  
 Student Congress 4  
 National Honor Society 4  
 KATHLEEN MISCH  
 Tornado Tillies 4  
 Girls' Quartette 2-3-4  
 Operetta 2-3-4  
 Girl Reserves 2-3



ADUDELLE ADUDELLE AKERS ALLEN ALLIN ALDERMAN ANDERSON AUSTIN  
 BARCROFT BANKHEAD BARKER BENNETT BETTISWORTH BIGGERSTAFF BOOKTER BRUNNER  
 BRANT BRICKER BRILEY BRILEY BRIGHTON BROWN BRUCE BUSEY BOWLUS

## Seniors

AILEEN ADUDELLE  
 Girl Reserves 2-3

CURTIS ADUDELLE

JOYCE AKERS  
 French Club 2-3  
 Pres. 4  
 Orchestra 2-3-4

EVA ALLEN  
 National Honor Society 4  
 Student Congress Sec. 4  
 Travel Club 4  
 Girl Reserves 3  
 Liberty 1-2

WILLIAM ALLIN  
 Beta Chi 2  
 Wrestling 2  
 Student Congress 4  
 Year Boog Staff 4  
 Stage 4  
 Travel Club 3

EMERY ALDERMAN

GEORGE ANDERSON  
 Orchestra 2-3-4  
 "Honor Bright" 4  
 French Club 2-3  
 Debate 2-3-4  
 Tornado Tommies 4  
 National Honor Society 4

JOHN AUSTIN  
 Dunbar Club 2-3-4  
 "Betty Lou" 2  
 "Bobby" 3

WENDELL BARCROFT  
 Tornado Tommies Pres. 4  
 "Honor Bright" 4  
 Pres. Youth Month 4.  
 Debate 3-4  
 Student Congress 2  
 Junior Play 3

JOHN BANKHEAD  
 Operetta 3  
 Dunbar Club 2-3-4  
 Intra-murals 2-3-4

CLYDE FRANKLIN BARKER  
 Dunbar Club 3-4  
 Operetta 3  
 Intra-murals 3

RUTH BENNETT  
 Glee Club 2-3  
 Travel Club 2-3  
 Commercial Club 4

BARBARA ALICE BETTIS-  
 WORTH  
 Glee Club 2-3  
 Aviation Club 2  
 Operetta 2-3  
 Travel Club 3-4

EDITH BIGGERSTAFF  
 Spanish Club 2-3  
 French Club 4  
 Intra-murals 2

GEORGE BOOKTER  
 Football 2-3  
 Tornado Tommies 3  
 Radio Club 4

JIM BRUNNER  
 Hi-Y 2-3-4

HAROLD BRANT  
 Travel Club 4

CORA BRICKER  
 National Honor Society 4  
 Debate 3-4  
 Girl Reserves 3-4  
 Sec. of Class 4  
 Splash Club 2-3  
 Campus Life 2

WILLIAM BRILEY  
 Dunbar Club 2-3-4  
 "Betty Lou" 2  
 "Bobby" 3  
 "Governor's Daughter" 4  
 Glee Club 4

FRANCES A. BRILEY  
 Operetta 3-4  
 Dunbar Play 2  
 Dunbar Club 2-3-4  
 Glee Club 3-4

CHARLES E. BRIGHTON  
 Student Congress 2-3-4  
 Hi Y, 2  
 Sec. 3; Pres. 4  
 Tornado Tommies 4  
 Orchestra 2-3-4  
 National Honor Society 4  
 "Honor Bright" 4

MAXINE BROWN  
 National Honor Society 4  
 Tornado Tilles 4  
 V. Pres of Class 4  
 Junior Play 3  
 Orchestra 2-3-4  
 Girl Reserves 2-3

DALE BRUCE  
 Intra-murals 2-3  
 Rario Club 4  
 Fi Ki Players 3  
 "Honor Bright" 4

LUCILLE BUSEY  
 Travel Club 3  
 Tri Eta 4  
 Intra-murals 2-3-4

JOE BOWLUS  
 National Honor Society 4  
 Travel Club Pres. 4  
 Debate 2-3  
 Orchestra 2  
 French Club 2



BURGHART BESSEY BRADSHAW BYLER CAUDLE CHURCH CILLESSEN CLARK CLARK CLARK  
 CLARKSON CLINE CRAWFORD CROWE CURTIS DANIEL DECKER DEWLIN  
 DONELSON DONICA DOUGLASS DUNWOODY EDMISTON EIKENBERRY EDWARDS EFFERDING

## Seniors

KENNETH BURGHART  
 Travel Club 3  
 Athletic 4

TOM BESSEY  
 Tornado Tommies 3  
 Biology Club 2

ARDEN BRADSHAW  
 Photography Club 4  
 Athletic Trainer 3-4

IRIS BYLER  
 Bartlesville, Okla., 2  
 Campus Life Editor 3  
 Fi Ki Players 3  
 Yearbook Staff 4  
 French Club 4

AVA LEE CAUDLE  
 Girl Reserves 2-3-4  
 Glee Club 3-4  
 Intra-murals 2-3-4  
 Operetta 3

WINIFRED CHURCH  
 Glee Club 2-3  
 Girl Reserves 2-3  
 Commercial Club 4

MARY F. CILLESSEN  
 Girl Reserves 2-3  
 Cabinet 4  
 Orchestra 2-3-4

ALLENE CLARK  
 Glee Club 2-3-4  
 Operetta 2-3  
 Quartette 4  
 Girl Reserves 2-3-4

OLIVER CLARK  
 Transportation Club 3-4  
 Aviation Club 2

DONZELLA M. CLARK  
 Girl Reserves 2  
 Spanish Club 3  
 Travel Club 4

MILDRED CLARKSON  
 Enid, Okla., 2-3

JUNE CLINE  
 Travel Club 2-3  
 Sec. 4  
 Operetta 2  
 Intra-murals 3

MARION CRAWFORD  
 Girl Reserves 2-3-4  
 Operetta 3

PATRICIA CROWE  
 Photography Club Sec. 4  
 Girl Reserves 2-3  
 Glee Club 2

MILLIE CURTIS  
 Fi Ki Players 3  
 Girl Reserves 2-4

PERRY B. DANIEL  
 Orchestra 2-3  
 Band 2-3  
 Travel Club 3

CHARLES DECKER  
 National Honor Society 4  
 Pres. of Class 2  
 V. Pres. Student Congress 3  
 Pres. Student Congress 4  
 Basketball 4  
 Orchestra 2-3-4

EUGENE DEWLIN  
 Aviation Club 2  
 Football 3-4  
 Travel Club 4

DELLA DONELSON  
 Girl Reserves 3-4  
 Travel Club 2

THOMAS DONICA  
 Fi Ki Players 3  
 V. Pres. 4  
 Intra-murals 3

RUBY JANE DOUGLASS  
 National Honor Society 4  
 Tornado Tillies 3-4  
 Junior Play 3  
 "Honor Bright" 4  
 Girls' Quartette 3-4  
 Orchestra 2-3-4

WILMA DUNWOODY  
 Girl Reserves 2-3-4  
 Orchestra 2-3-4  
 Intra-murals 2-3-4

VIOLA D. EDMISTON  
 Glee Club 2  
 Travel Club 3  
 Girl Reserves 4

MARY LOUISE EIKEN-  
 BERRY  
 Girl Reserves 2-3-4

CLINTON EDWARDS  
 Jay Birds 2  
 Biology Club 3

HARRY EFFERDING  
 Football 4  
 Basketball 3  
 Travel Club 4  
 "C" Club 4



TATE TATUM TESH THOMAS TODD TONGIER TOWNSON TYLER TYLER VANN VARNIER VAUGHN  
VEDINER VOGAN WALTON WARREN WATSON WEBB WEHMEYER WEIBLE WILLCOXON WESTMORELAND  
WILLIAMS WILSON WINTERS WISDOM WISHALL WU LLENSCHNEIDER WULLENSCHNEIDER YOUNG YOUNG  
ZIMMERMAN HARRIS

## Seniors

- |   |   |  |   |
|---|---|--|---|
| EILEEN TATE<br>Student Congress 2<br>French Club 2<br>Girl Reserves 3-4                                   | AVA LEE VARNIER<br>Tri Eta 2-3<br>Treas. 4  | JIM WILLCOXON<br>National Honor Society 4<br>Class Pres. 3<br>V. Pres Youth Month 4<br>Football 2-4<br>Basketball 2-3-4<br>"C" Club 3<br>Pres. 4 | JOE WULLENSCHNEIDER<br>Football 2-3-4<br>Glee Club 2-3-4<br>Hi Y 2-3-4<br>Tornado Tommies 4<br>Intra-murals 2-3-4<br>Campus Life 4    |
| FRANK TATUM   | ARTHUR VAUGHN<br>Stage 4  | FRANCES LOUISE WEST-<br>MORELAND<br>Wynne, Ark., 2<br>Texarkana, Texas, 3<br>Girl Reserves   | BILL WULLENSCHNEIDER<br>Hi Y 2-3<br>Treas. 4<br>Football 3<br>Intra-murals 2-3-4<br>Glee Club 2-3                                     |
| JAMES H. TESH<br>Travel Club 4<br>Electricity Club 3  | NORMAN VEDINER<br>Electricity Club 3  | FLOSSIE MARIE WILLIAMS<br>Girl Reserves 3<br>Treas. 4<br>Orchestra 2<br>Aviation Club 2  | ROBERT YOUNG<br>Boys' Quartette<br>Orchestra 2-3-4<br>Band 3<br>Hi Y 2-3-4  |
| HOBART THOMAS   | MAXINE A. VOGAN<br>Girl Reserves 2-3<br>Cabinet 4<br>Golf Club 3-4                    | MARY WILSON<br>Tri Eta 3<br>Sec. 4<br>Aviation Club 2  | FLOY YOUNG<br>Student Congress 2-4<br>Tri Eta 2-3-4<br>Beta Chi 2<br>Intra-murals 3-4   |
| INEZ TODD<br>Tri Eta 2-3<br>Girl Reserves 4   | WILMA WALTON<br>Girl Reserves 2-3<br>Cabinet 4<br>Golf Club 3                         | JACK WINTERS<br>Football 4<br>Science Club 3<br>Orchestra 2-3-4<br>"C" Club 4  | LAURA ZIMMERMAN<br>Girl Reserves 2-4<br>Tri Eta 3<br>Intra-murals   |
| MABEL TONGIER<br>Tornado Tillies 3-4<br>Girl Reserves 2<br>Glee Club 2<br>"Honor Bright" 4                | LOUISE WARREN<br>Dunbar Club 2-3-4<br>Dunbar Operetta 3-4<br>Glee Club 2-3-4          | WARREN WISDOM<br>Travel Club 3<br>Blue Jays 2<br>Campus Life 4   | LOUISE HARRIS<br>Girl Reserves 3-4<br>Student Congress 3<br>Biology Club 2<br>Glee Club 2-3-4<br>Operetta 2-3-4<br>Intra-murals 2-3-4 |
| EVVIE TOWNSON<br>Operetta 2-3-4<br>Tornado Tommies 3-4<br>Hi Y 2-3-4<br>Intra-murals 3<br>Glee Club 2-3-4 | BETTE WATSON<br>French Club V. Pres. 4<br>Orchestra 2-3-4<br>Splash Club 2<br>Fi Ki 3 | JANE WISHALL<br>Spanish Club<br>V. Pres. 2-3<br>Girl Reserves 4  |   |
| ERNEST L. TYLER<br>Photography Club 4<br>Hi Y 2-3   | LaVERNE WEBB<br>Tornado Tillies 3-4<br>Glee Club 2-3-4                                |  |   |
| JEWELL TYLER<br>Girl Reserves 2-3-4<br>Intra-murals 2-3-4   | ADELENA WEHMEYER<br>Travel Club 2-3-4   |  |   |
| JUNO MILDRED VANN<br>Dunbar Club 2-3-4<br>Intra-murals 2-3-4<br>Glee Club 2                               | HARRY WEIBLE<br>Spanish Club 2<br>Fi Ki 4<br>Intra-murals 3                           |  |   |

## Seniors

FRANK ALFORD  
Van Buren 2-3

GEORGE BATTAGLEAR

DuMONTE BARBER  
Transportation Club 4  
Travel Club 3  
Intra-murals 3

IOLA BRAZEL  
French Club 2-3  
Fi Ki Club 4

EDGAR BELL  
Orchestra 2-3-4  
Band 2-3-4

ELLIS BIGGERSTAFF

VERNON BYNUM  
Eldorado, Okla., 2-3

ED CONWAY

PAUL CURRENS

PAUL DEARTH

LESLIE ELLISON

GEORGE GILBERT  
Travel Club 2-3-4  
Intra-murals 2-3-4

ROBERT GRIFFITH  
Travel Club 2-3-4  
Intra-murals 2-3-4

BETTY HAYDEN

ROBERT JONES

ISAAC KRIEBEL

JANE LUSK  
Aviation Club 2  
Tri Eta 3  
Travel 4

CLARA LECHLEITNER  
Travel Club 3-4

ED McMULLEN

NADEAN NORMAN  
Student Congress 2-3  
Tri Eta 2-3-4

WAYNE ORR  
Orchestra 2-3  
Band 2-3  
Fi Ki 3  
Campus Life 4  
Junior Play 3

WAYNE MYERS

DOROTHY PAHMEYER

MARY BELL PARK

IRENE READ

ORVAL STATON  
Band 2-3-4  
Orchestra 2-3-4  
Intra-murals 2-3-4  
Science Club 4  
Campus Life 4  
"Honor Bright" 4

LUCILLE SLATON  
Ponca City, Okla., 2  
Girl Reserves 3  
V. Pres., 4

FRANCIS SMALLEY

JOHN SOURBEER  
Class Treas. 2  
Football 2  
Travel Club 3-4

CHRISTINE SCOTT

HOBART THOMAS

EARL WRIGHT  
Aeronautics Club 2-3  
Transportation Club 4  
Student Congress 2



EARL JOHNSON



JEANETTE MORGAN

KING AND QUEEN OF THE FUN FESTIVAL

The class of 1935 has won the King and Queen contest for three consecutive years, Mr. Johnson and Miss Morgan being elected each time.



Juniors

ABBOTT ANDERSON ALLOWAY ALTER AUSTIN BLACK BENTLEY BRITTAIN BROWN BEVER COOK BRITTAIN  
COOKE CHAMBERLIN CARTER CLINE DELAPLAINE DeTAR DECKER DONALDSON EKSTRAND EWBANK EIKENBERRY  
FRY FEIL FORD FERRIS FIELDS GAYLOR GUDGEN GUY GALLI GALLI GONDER



NEL

*Pres*  
*Vice*  
*Secr*  
*Spor*

---

*John Winters*



### Student Congress

ADKINS BANOWETZ BLANTON BRIGHTON WINTERS McCASLIN KARNS WILLCOXON HILL GUDGEN COX PLATTNER  
NEISWONGER HODSHIRE STOVER JOHNSON MAHAFFY WALLIS KARNS PAULK RHODES KITTELL HURST HOOVER  
HEY LESTER SHAPLAND DECKER ALLEN GUY ECKHARDT DOERING MOSIER SMITH MITCHELL KNAPP



### National Honor Society

STEEL BRIGHTON MOSIER FIEBACH WILLCOXON ANDERSON DECKER BOWLUS  
MISCH MITCHELL HEALY SMITH DOUGLASS ALLEN BRICKER BROWN





Girl Reserves Cabinet

MASSEY VOGAN SMART McDANIEL LARSON CURTIS CLARK  
 HAYDEN WALTON BRICKER GOCKE WILLIAMS GUDGEN CILLESSEN



Girl Reserves

GARDNER CROWE EIKENBERRY CHAMBERLAIN HUGHEY KARNs VARVEL WATSON RICHARDSON PASSMORE BRADY  
 HENDERSON TODD McCULLEY HASTINGS AUSTIN  
 CURTIS CAUDLE WILLIAMS DUNWOODY BRICKER GOCHE WISHALL MAHAFFEY WESTMORELAND STARMER EWBANKS  
 SHIELDS HUDDLESON GOUGH LARSON  
 WILLIAMS SCHOOLEY WILLIAMS EPPERSON KITTELL NIXON JACKMAN ZIMMERMAN WALTON PEDERSEN BOHANNON  
 McARTHUR WARREN BENDURE



### Girl Reserves

WATSON TOWNSON CILLESSEN CLARK RYAN FOLAND STUDEBAKER MOORE GELVIN ROBERTSON LAMB DeTAR  
 CRAWFORD ADUDDLELL  
 HEPNER LOGAN KALLENBERGER MASSEY BLICK McDANIEL SMART SLATON RAY SCHIERLMANN ADUDDLELL HAYDEN  
 CILLESSEN  
 STONG HULSE DILLON PHEGLEY GAYLOR HILL VOGAN GUDGEN EDMISTON WEST FRY SPENCER



### Hi-Y

KAUFFMAN CONRAD NIESWONGER KONZ KARNS ROSS BLANTON BETTISWORTH HICKS ROBINSON SKAGGS  
 JACKSON BRADLEY YOUNG SMITH STOVER WEINBERG NICOLAS HODSHIRE HARDING RAY  
 REED HUDGINGS BROWN TAYLOR KELLY BRIGHTON McDONALD WULLENSCHNEIDER DECKER KIMBREL  
 WULLENSCHNEIDER



### Debate

KNAPP WHITE JOHNSON KIRBY STEEL ANDERSON PLATTNER HENDRIX  
HALL JAMES NELSON BANOWETZ ENGLUND ROWLAND HEALY BRICKER SHAPLAND KRIGEL  
ADKINS BLACK BENTLEY TUTTLE WEINBERG MOSIER SEABORN BARCROFT KITTELL



### Fi Ki Players

HALL CAMPBELL COOK PAULK ROBB JOHNSON LEMON McMILLAN BARDENHAGEN HAMLIN LATIMER  
SMITH SCHUSTER MORRISON DONALDSON KIRBY BULLARD PLATTNER WALTON JAMES KILLION  
NELSON MCGREW RUTHRAUFF ABBOTT DONICA BRITTAIN RICHMIRE ENGLUND DAESCHNER



### Drum Corps

SCHUETZ      SHEEHAN    PERRY    FORD    McFERRIN    MYERS    KIRBY    PRUETT  
 DELAPLAINE    BANOWETZ    STEWART    HALLORAN    HALLORAN    DOERING    BLACK  
 McCARTER    REITER    ARMSTRONG    PERRY    BROOKS    MASTERS    JOHNSON



### Band

BRANSTETTER    KRIGEL    DONELSON    HARDEN    NEISWONGER    PLATTNER    ECKHARDT    WINTERS  
 LEFT—MOSHER    McMILLAN    MECUM    SINGLETON    BOWLUS    KRIEGLER    WHITMORE    DANIELS    SPARKS    CATHERS  
                   SAUNDERS    STOVER    FIEBACH    CRAMER    STATON    MOORE  
 RIGHT—HARDING    GROTH    THOMPSON    KIRBY    ESTES    KNAPP    McMILLAN    DAVIES    CILLESSEN    RAY    GRIESE  
                   CAULFIELD    MITCHELL    PARROTT    DECKER    AXTON    GILLAM    CARPENTER



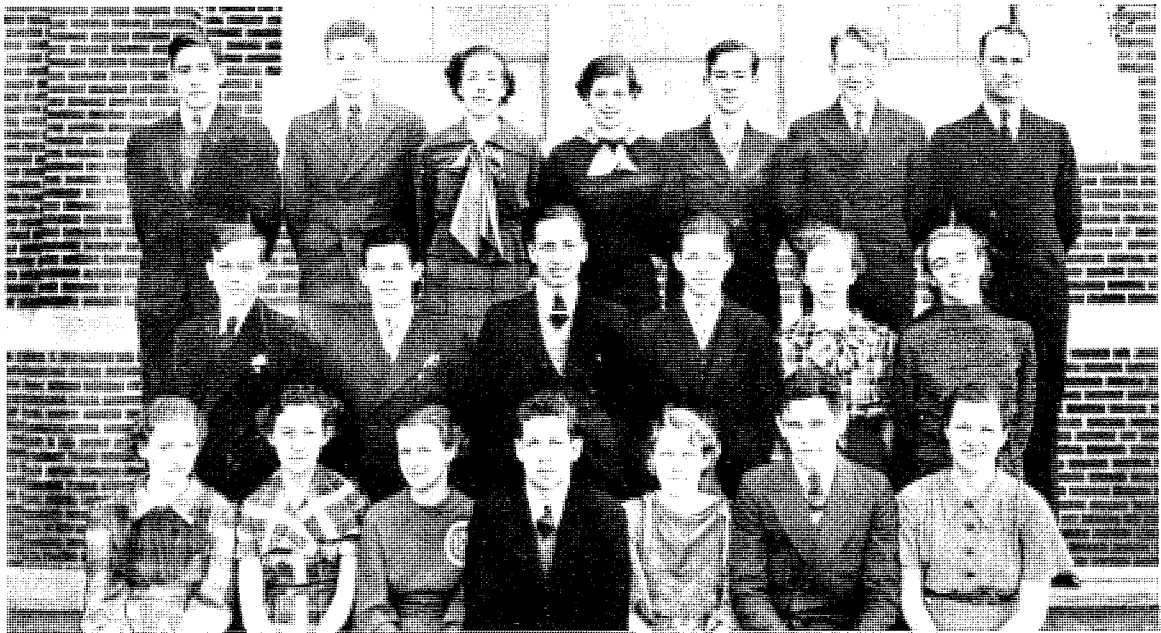
### Orchestra

Carter Gillam Moore Groth Cillissen Knapp Bettisworth Harding Neiswonger Caulfield Lemon Cahill Cathers Maxson Mecum Harding  
 Ray Smith Dunwoody Sparks Singleton Plattner Estes Walton Cramer Eckhardt Kriegel Bessey Haines Brubaker Taylor  
 Hastings Holt Pfister Cillisen Akers Hardin Logan Campbell Doering Kirby Dunwoody Williams Saunders Daniels Haff Adkins Anderson  
 Bettisworth Brighton Daniel Mercer Mosher Young Schuster Tilcock Stebbins Summers Nelson Medford Moore Reitz Crawford  
 Yount Huddleston Phegley Brown Mitchell Douglass Watson Robb Cook Powers Paulk Schuetz Studebaker Aduddell Woolcott Burr  
 Branstetter Griese Mitchell Sparks James Roberts Halloran Halloran Stover Staton Winters Decker McDonald Kelly



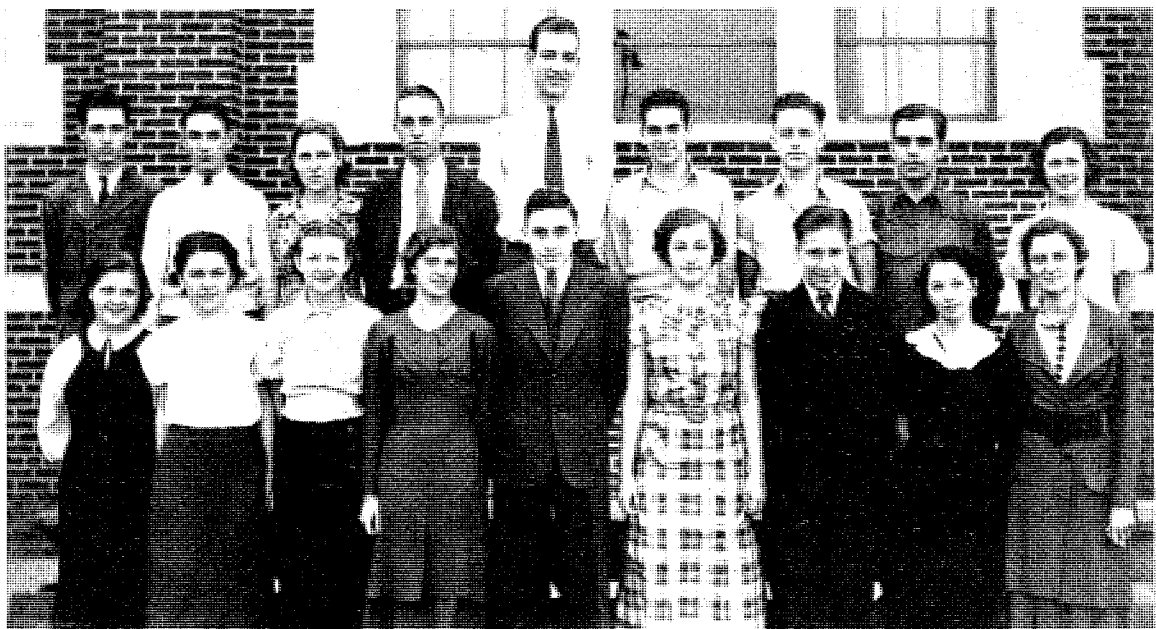
### Glee Club

Decker Young Crozier Ross Branstetter McCulley Stover Weinberg Lester Manis Kirby Knotts Cook Starmer Ballew  
 Hicks Englund Stewart Rowland McCarter Slusher Keith Kirby Robson Morgan Barber Rymán Morrison Caudle Gelvin Donnelly Snider Martin  
 Donnel Daniel Pahmeyer Harlin Watkins Massey Richmire Richardson Watson Epperson Brittain Webb Bever Spoonamore Wood York Slaton  
 Paulk Joseph Struve Chance Strimple DeTar Cline Anderson Slusher Williams Cathers Hurley Sitz Allen Saunders Jones Banowetz Schooley  
 Holt Speary  
 Robb Douglass Nelson Passmore Johnson Williams Townson Hall Dewlin Jackson Holland Pyatt Cillissen Powell Davis Slater



### Senior Play Cast

WINTERS	JOHNSON	DOUGLASS	MITCHELL	ANDERSON	STEEL	HENDRIX
STATON	BRIGHTON	KNIGHT	McMILLAN	BRICKER	HEALY	
SMITH	MOORE	TONGIER	KITTELL	SMITH	BARCROFT	RYMAN



### Junior Play Cast

FLETCHER	McDONALD	RICHMIRE	BEAVER	KIRBY	GUY	LEMON	HAYDEN	HAYES
BRITTAIN	BENTLEY	HILL	ABBOTT	BLANTON	ALTER	HEY	JONES	DAESCHNER



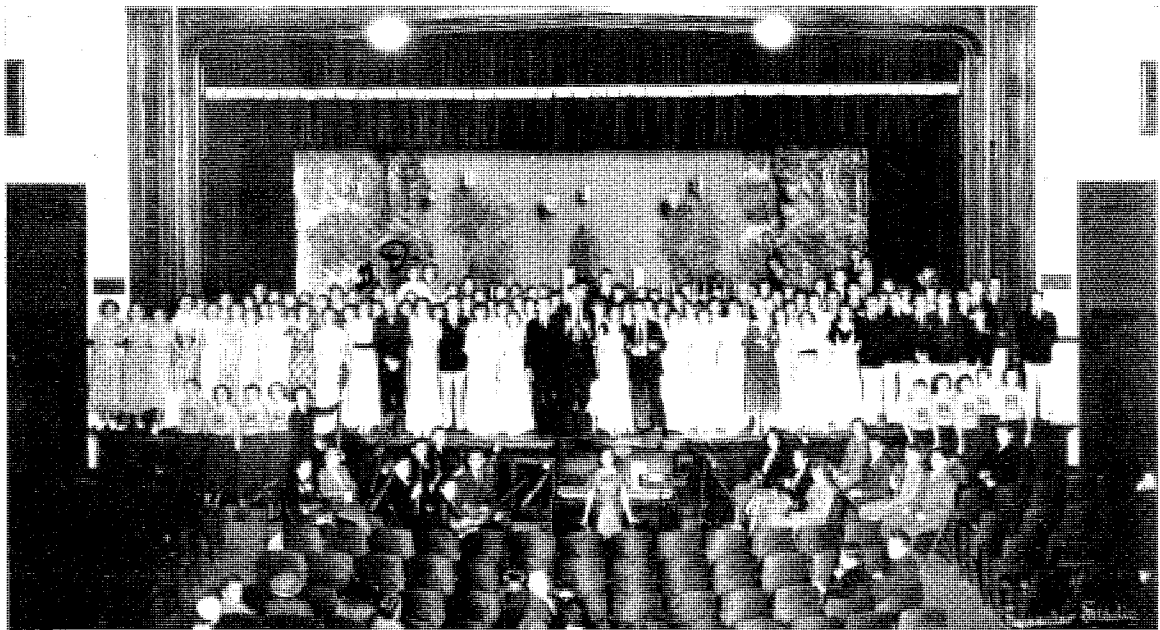
Tornado Tillies

MITCHELL	DOUGLASS	BROWN	WALL	MISCH	HEALY
GARTLEY	TONGIER	GLASER	MORGAN	LOWE	
HAYES	SMITH	KIRBY	BENTLEY	TUTTLE	WEBB



Tornado Tommies

FIELDS	KNIGHT	GREER	ROSS	McDANIEL	STEEL
CURRIER	ROBINSON	LESTER	KARNS	JOHNSON	
ANDERSON	KITTELL	MOSIER	BARCROFT	MADDOX	



### Sunbonnet Girl

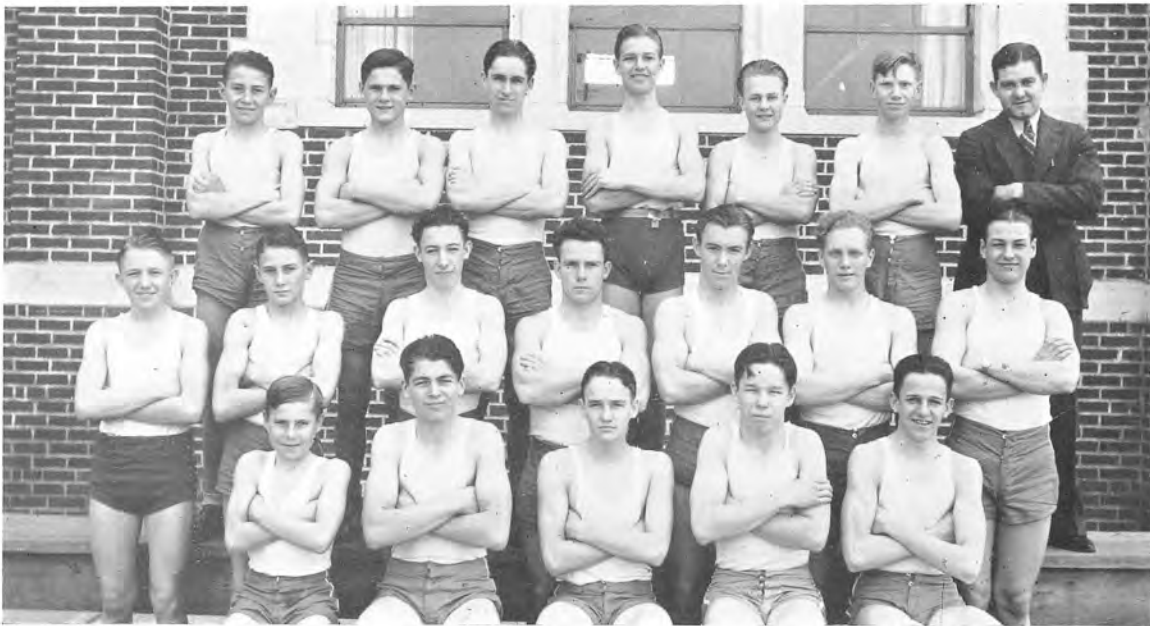
Operetta presented by Boys' and Girls' Glee Clubs under the direction of Mr. Neil Branstetter. The principals were: Kathleen Misch, Ruby Johnson, Alma Richmire, Roberta Mitchell, Bette Watson, Betty Cillessen, George Knotts, Robert Young, Grace DeTar, Vernon Kirby, Lee Heinz, Betty Jane Doering, John Speary, Bill Steel, Allene Clark, Evvie Townson.



### Dunbar Club

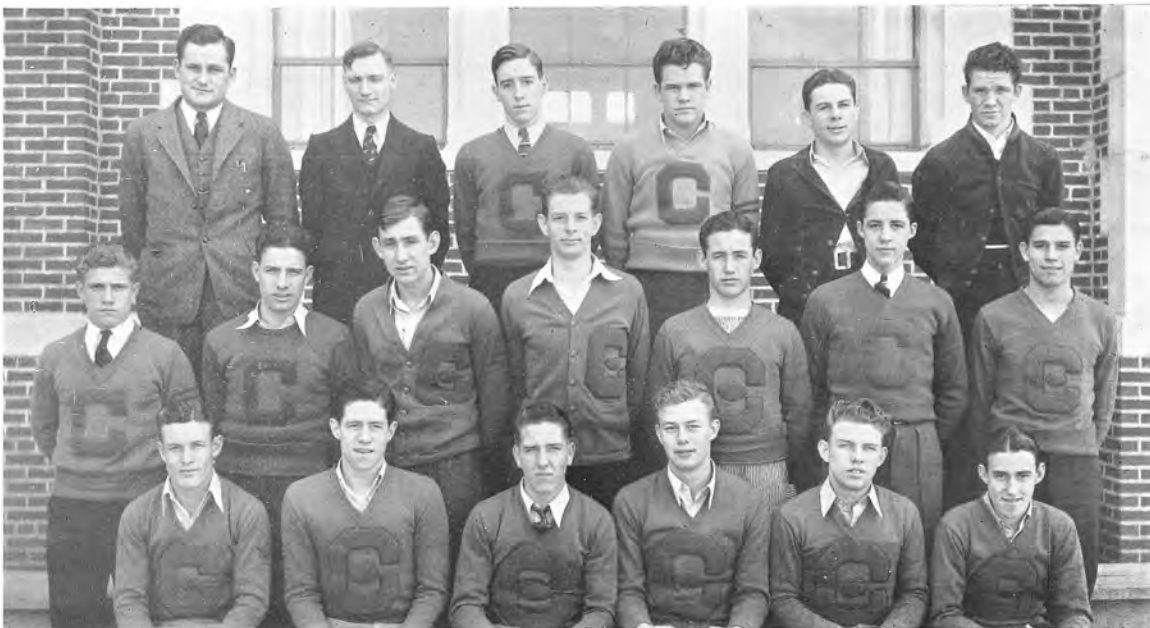
BRILEY CHAMBERS CLARK AUSTIN MASTERS FAULKS McBLEE MAY CARTWRIGHT BOGANNEY MASTERS GAINS  
OTEN BANKHEAD JONES LAWTON CARTWRIGHT STROTHERS MEDLOCK BRILEY WISNER NEAL  
AUSTIN ORMAN KEITH LONGACKER TAYLOR RHODES WILLIAMS BOGANNEY MONROE THOMPSON





### Athletic Club

SPARKS SNIDER BURGHART GRAY ALBERTS BARTHOLOMEW LE CLERE  
WHITMORE SPARKS MOSHER STONG YONKERS DOTY MARTIN  
TILCOCK EVANS WOODS ANDERSON SIMPSON



### "C" Club

BOEHM LEWIS McCASLIN WINTERS ARMSTRONG MACE GRAY  
HURST KITCHENS SMITH BURKE REED TIPTON WILLCOXON SAMUELS  
BENTLEY BENEFIEL

Grace DeTar

Worthy & Stover  
Foster

Charles Johnson

### Autographs

Tom  
 Helen  
 Leila  
 Vernon Plattner  
 Lillian French  
 Isabell Hallis  
 Jack Kigel  
 Florence Bartholow  
 Nadine Rabending  
 Armin Epperson  
 Mary Lee Slicks  
 Geraldine Walcott  
 Elsa Mae White  
 Billie Evelyn Wash  
 Margie Colton '35'  
 Dennis Lee Perry  
 Ruby Jane Douglass  
 Mafine Brenning  
 Margaret L. Chamberlin  
 Pauline Metz "Metz" '35

Shirley Karus  
 Helen Thompson  
 Betty Soap "Daring"  
 Norma Mae Nelson  
 Triola Schuch  
 Helen Fallenger  
 Doris Kicall  
 Hazel Kendall  
 Jean Campbell  
 Eleanore Battisworth  
 Ruth Virginia Huddleson  
 Leon Niswonger  
 Frank H. Tilcock  
 Lucina Steiner  
 John Winters  
 Ernest Frisbie  
 Pauline Richard

# Autographs



Betty Gregory

Carrie G. Webb

Dorothy Leavens

Coach "Babe" Lewis

Marquente Dillon

Harriette Weible

Hazel "Jimmie" Kendall

Bob Torrey