

Y  
E  
A  
R  
B  
O  
O  
K

Field Kindley High School

1935

*Maynard L. Myers*

It is the pleasure of the senior class to present to you the year book of 1934-1935. May it recall happy memories and pleasant friendships.

Committee:

*Iris Byler*

*Jack Kittell*

*Donald McCaslin*

*Orphena Perry*



*In appreciation of his loyalty and  
personal interest, we the seniors ded-  
icate the year book to our principal,  
Mr. W. W. Bass*

*W. W. Bass*





LE CLERE HIGHBAUGH CADE JACKSON GRIGG THORNE LEWIS BRANSTETTER CURRIER HENDRIX  
 BASS WEAVER WEBB LARSON PENN CURTIS SCHUETZ GREGORY CRONEMEYER NEIS  
 HOOVER MAHER DAESCHNER HAGAR PRICE GLASER JOHNSTON SHRUM McFERREN

## Faculty

JAMES LeCLERE  
 Physical Education  
 Mathematics

SWAN L. HIGHBAUGH  
 Industrial Arts

DUDLEY CADE  
 Industrial Arts

MERLE JACKSON  
 English

E. W. GRIGG  
 Assistant Principal  
 Biology

F. A. THORNE  
 Commerce

LELAND LEWIS  
 Athletics  
 History

NEIL BRANSTETTER  
 Music

W. FRENTON CURRIER  
 Industrial Arts

CLARK HENDRIX  
 History

W. W. BASS  
 Principal

CARRIE WEAVER  
 English  
 History

CARRIE WEBB  
 Mathematics

HELEN LARSON  
 History

FLORENCE PENN  
 Art

HAZEL CURTIS  
 Commerce

PAULINE SCHUETZ  
 Modern Language

BETTY GREGORY  
 Home Economics

GLADYS CRONEMEYER  
 Home Economics

CHARLES P. NEIS  
 Social Science

FLORENCE HOOVER  
 English

RUTH MAHER  
 Secretary

NAOMI DAESCHNER  
 English

EVA LEE HAGAR  
 Commerce

GRACE PRICE  
 Science

HELEN GLASER  
 Mathematics

JO JOHNSTON  
 Physical Education  
 English

MARY SHRUM  
 Mathematics  
 History

RUTH McFERREN  
 Librarian



PASSMORE PERRY PERRY PULLEY RAY REITER REYNOLDS RICHARDSON ROBERTS RYMAN ROBERTS  
SAUNDERS SCHMIDT SCHUETZ SHIVE SCHUTTLE SMART SMITH SMITH SMITH SPOONAMORE  
SPRAGUE SPRAGUE STEEL STONG STUDEBAKER SUMPTER SEABORN STEWART

## Seniors

### MARTHA PASSMORE

Girl Reserves 2-4  
Operetta 2-3  
Glee Club 2-3  
Travel Club 3

### MARILYN PERRY

Drum Corps Major 4  
Student Congress 2  
Girl Reserves 2-3  
Intramural 3-4  
Glee Club 2  
Operetta 2

### ORPHENA PERRY

Yearbook Staff 4  
Student Congress 3  
Girl Reserves 2-3-4  
Intra-mural 3  
Glee Club 2  
Operetta 2

### RUBY PULLEY

French Club 2  
Travel Club 3-4

### EVELYN RAY

French Club 2  
Girl Reserves 3-4  
Cabinet 4

### PAUL REITER

### FLOYD REYNOLDS

French Club 2-3-4  
Stage 4  
Campus Life 4

### DORRIS RICHARDSON

Humor Club 2  
Dramatics Club 3-4  
Campus Life 3-4  
Intra-murals 3-4

### WILMA WYNONA ROBERTS

Student Congress 2  
Alpha Sigma 4  
Girl Reserves 2-3-4

### WILMA IRENE ROBERTS

Orchestra 2-3-4  
Travel Club 3  
Girl Reserves 4

### MARY K. RYMAN

Girl Reserves 2-4  
Travel Club 3  
Intra-murals 2-3-4  
Glee Club 2-4  
Golf Club 4  
"Honor Bright" 4

### J. B. SAUNDERS

Biology Club 2  
Travel Club 3  
Radio Club 4  
Band 2-3-4

### WINIFRED SCHMIDT

Electricity Club 2-3  
Hi Y 4  
Travel Club 4

### DAVID SCHUETZ

Wrestling 2  
Travel Club 4

### LORENE SCHUTTLE

Altamont, Kans., 2-3  
Rhythmic Circle 4

### AMOS SHIVE

Blue Jays 2  
Biology Club 2  
Fi Ki 3-4

### MARY LOUISE SMART

Girl Reserves 2-3  
Cabinet 4

### EDWIN SMITH

Travel Club 3-4

### NADEAN SMITH

National Honor Society 4  
Tornado Tillies 4  
Rhythmic Circle 4  
Campus Life 4  
"Honor Bright" 4  
Intra-murals 2-3-4

### ETHELYN SMITH

Cercle Francais 2  
Girl Reserves 3-4  
Glee Club 2

### JOHN SOURBEER

Travel Club 3-4  
Treas. of class 2

### DARLENE SPOONAMORE

Girl Reserves 2-3-4  
Glee Club 2-3-4  
Operetta 2-3-4

### BILL SPRAGUE

Student Congress 3  
Travel Club 2-3  
Photography Club 4

### KATHRYN SPRAGUE

Spanish Club 2-3  
Girl Reserves 4  
Intra-murals 2-3-4

### BILL STEEL

Debate 2-3-4  
National Honor Society 3-4  
Tornado Tommies 3-4  
French Club 2  
Glee Club 3  
"Honor Bright" 4

### JOSEPH WAYNE STONG

Football 3  
Athletic Club 3-4  
Intra-murals 2-3  
Wrestling 2  
Glee Club 2-3

### SHANNON STUDEBAKER

Travel Club 2-3-4  
Tornado Tommies 4  
Orchestra 2-3

### MARVIN SUMPTER

Football 2-3-4  
Basketball 2  
Transportation Club 4

### JUSTINE SEABORN

Junior Play 3  
Debate 3-4  
Rhythmic Circle 4  
Fi Ki 3

### DORIS STEWART

Newton, Kans., 2  
Girl Reserves 3-4  
Intra-murals 3-4



MITCHELL MOORE MORGAN MORREY MORRIS MORRISON MOSIER MURRAY MURDOCK  
 McCARTER McCASLIN McCORMICK McCULLOUGH McCULLEY McDANIEL McDANIEL McGrath McGrath  
 McMillan McMILLAN McWhorter NICOLAS NELSON NIXON NORTON NUNNERY

## Seniors

ROBERTA MITCHELL  
 National Honor Society 4  
 Tornado Tillies 3  
 Pres. 4  
 Girls' Quartette 3-4  
 Orchestra 2-3-4  
 "Honor Bright" 4  
 Operetta 2-3-4

MARGARET MOORE  
 Campus Life 4  
 Girl Reserves 2-3-4  
 Orchestra 2-3-4  
 Intra-murals 2-3-4  
 Operetta 3-4

JEANETTE MORGAN  
 Tornado Tillies 4  
 French Club 3  
 Golf Club 2  
 Class Treas. 3  
 Operetta 2-3-4

ALFRED MORREY  
 Student Congress 3  
 Science Club 3-4  
 Spanish Club 2

RAYMOND MORRIS  
 Stage 4  
 Photography Club 4  
 Wrestling 2  
 Biology Club 3

MARGARET MORRISON  
 Hammond, Ind., 2-3  
 Girl Reserves 3  
 Fi Ki Pres. 4  
 Glee Club 3-4  
 Operetta 3  
 Golf Club 4

WILBUR MOSIER  
 Debate 2-3-4  
 Student Congress 2-4  
 Tornado Tommies 3-4  
 V. Pres. 3  
 Class Sec. 2  
 Class Pres 4  
 National Honor Society 4  
 Junior Play 3

HELEN IDA MURRAY  
 Spanish Club 2-3  
 Travel Club 4

BESSIE MURDOCK  
 Commercial Club Pres. 4  
 Tri Eta 2-3  
 Golf Club 2  
 Intra-murals 2-3

GRACE McCARTER  
 Fi Ki Sec. 3  
 Travel Club Sec. 4  
 Rhythmic Circle 4  
 Drum Corps 4  
 Operetta 2-3  
 Intra-murals 3

DONALD McCASLIN  
 Student Congress 3-4  
 Class Treas. 4  
 Basketball 2-3-4  
 Travel Club Treas. 3  
 "C" Club 2-3-4

MARGARET McCORMICK  
 Wagoner, Okla., 2-3  
 Travel Club 4

JACK McCULLOUGH  
 Travel Club 2-3-4

JUANITA McCULLEY  
 Girl Reserves 2-3-4

JACK McDANIEL  
 French Club 2

MONA McDANIEL  
 Girl Reserves 2-3  
 Pres. 4

FIDELIS McGrath  
 Girl Reserves 2-3-4

MICHAEL McGrath  
 Radio Club 3-4

WILMA McMILLAN  
 Orchestra 2-3-4  
 Glee Club 4  
 Fi Ki 3-4  
 Girl Reserves 2

WILMUR McMILLAN  
 Hi Y 2-3-4  
 "Honor Bright" 4

RAYMOND McWhorter  
 Hi Y 2-3  
 Glee Club 2  
 Photography Club 4  
 Intra-murals 2-3

DALE NICHOLAS  
 Football 3-4  
 "C" Club 3-4  
 Fi Ki 3

DORIS NELSON  
 Girl Reserves 3-4

BONNIE JEAN NIXON  
 Muskogee, Okla., 2-3  
 Girl Reserves 3-4

RICHARD NORTON  
 Travel Club 2-3-4

BILL NUNNERY



ENGLAND ENGLAND ENGLAND FEIL FIEBACH FISCUS FORD FITZPATRICK GARDNER  
 GARTLEY GOCKE HALLORAN HALLORAN HANES HANES HARDING HARRIS HARDIN  
 GRAHECK HALE HEALY HOLEMAN HERRING HULSE JACKMAN JAGGERS

## Seniors

GRANT ENGLAND  
 Radio Club 2-3  
 Pres. 4  
 Intra-murals 2-3-4

VERA ENGLAND  
 Tri Eta 2-3-4  
 Orchestra 2-3-4

ELDON ENGLAND  
 Wrestling 2-3  
 Hi Y 4  
 Stage 4  
 Intra-murals 2-3-4

ALENE FEIL  
 Intra-murals 2-3  
 Commercial Club 4

RALPH FIEBACH  
 Class Officer 2-3  
 National Honor Society 4  
 Basketball 4  
 Orchestra 2-3-4

EFFIE FISCUS  
 Girl Reserves 3

EDWARD FORD  
 Spanish Club 2  
 Fi Ki Players 3  
 French Club 4

FRENIA FITZPATRICK  
 Girl Reserves 3

THELMA GARDNER  
 Orchestra 2-3  
 Girl Reserves 2-3-4  
 Rhythmic Circle 4

FRANCES GARTLEY  
 Tornado Tillies 3-4  
 Orchestra 2  
 Student Congress 2  
 Golf Club 2

PHYLLIS GOCKE  
 Girl Reserves 2-3  
 Sec. 4  
 Glee Club 2  
 Student Congress 2-3-4  
 Operetta 2  
 Intra-murals

ELEANOR HALLORAN  
 Orchestra 2-3-4  
 Glee Club 2  
 Drum Corps 4  
 Aviation Club 2  
 Tri Eta 3  
 Rhythmic Circle 4

MARIE HALLORAN  
 Orchestra 2-3-4  
 Glee Club 2  
 Drum Corps 4  
 Aviation Club 2  
 Tri Eta 3  
 Rhythmic Circle 4

WILMA GENE HANES  
 Tri Eta 2  
 Glee Club 2  
 Commercial Club 4  
 Intra-murals 2

HELEN LORENE HANES  
 Tri Eta 2  
 Glee Club 2  
 Commercial Club 4  
 Intra-murals 2

LOREN HARDING  
 Hi Y 4  
 Travel Club 2-3

JAMES HARRIS  
 Intra-murals  
 Blue Jays 2

KATHRYN HARDEN  
 Caney 2-3  
 French Club 4

BILL GRAHECK  
 Travel Club 2-3  
 Tornado Tommies 4  
 V. Pres. 4  
 Junior Play 3

FAYE HALE  
 Girl Reserves 3-4  
 Glee Club 3  
 French Club 2  
 Intra-murals 3

ADELAIDE HEALY  
 National Honor Society 3-4  
 Tornado Tillies 3-4  
 Debate 3-4  
 "Honor Bright" 4  
 Junior Play 3  
 Ass't. Yell Leader 4

HAZEL HOLEMAN  
 Girl Reserves 2  
 Travel Club 3-4

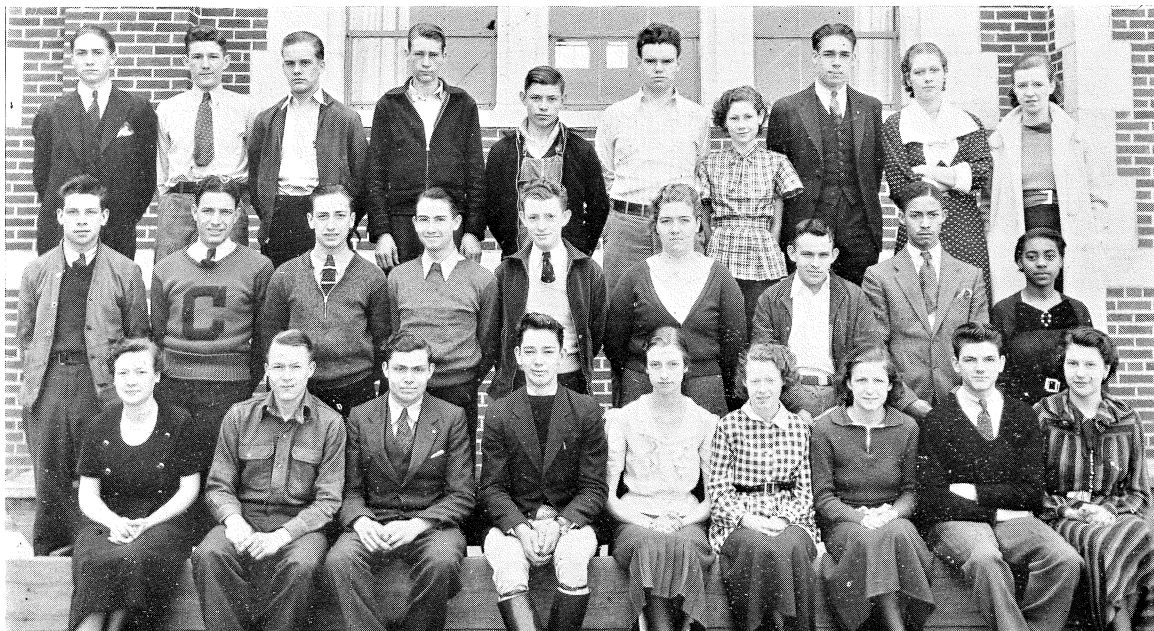
HELEN HERRING  
 Spanish Club 2-3  
 Travel Club 4  
 Intra-murals 2

RUTH HULSE  
 Girl Reserves 2-3-4  
 Orchestra 2-3  
 Intra-murals 2

FRANCES JACKMAN  
 Spanish Club Pres. 2  
 Intra-murals 2-3  
 Girl Reserves 4

NORMA JAGGERS  
 Tri Eta 2  
 Commercial Club Sec. 4  
 Intra-murals  
 Glee Club 2





JARMAN JOHNSON JOHNSON JOHNSON JOHNSON JOHNSON JONES JORDAN KARNs KEITH KIRBY  
 KITTELL KITCHENS KNIGHT KNOTTs KRIGEL LAMB LATIMER LEWIS LAWTON  
 LIVELY LOOP LYBERGER MADDOX MAHAFFY MAHAN MASTERS MERCER MISCH

## Senior

LISLE JARMAN

CHARLES JOHNSON

Football 2-4  
 Student Congress 3  
 Debate 4  
 Junior Play 3  
 "Honor Bright" 4  
 Fi Ki Club 4

EARL JOHNSON

Tornado Tommies 4  
 Student Congress 2-4  
 Hi Y 2  
 Radio Club 3  
 Stage Mgr. 3

EVERETTE JOHNSON

Electricity Club 3  
 Radio Club 4

CARL JOHNSON

Transportation 4

JOHN JONES

Football 2-3-4  
 Orchestra 2  
 Photography 4  
 Intra-murals 2-3

VIRGINIA JORDAN

Tri Eta 2-3-4  
 Glee Club 2  
 Intra-murals 3-4

ED KARNs

Student Congress 2, 4  
 Tornado Tommies 4  
 Hi Y 2-3

ROSEMARY KEITH

Girl Reserves 2  
 Spanish Club 3  
 Alpha Sigma 4  
 Glee Club 2-3-4

ANN KIRBY

Tornado Tillies 4  
 Cheer Leader 4  
 Football Queen 4  
 Glee Club 2-3-4  
 French Club 2-3  
 Operetta 2-3-4

JACK KITTELL

"Honor Bright" 4  
 Junior Play 3  
 Student Congress 2-3-4  
 Yearbook Staff 4  
 Intra-murals 2-3-4  
 Pres. 4.  
 Tornado Tommies 3-4

LOREN V. KITCHENS

Football 4  
 Intra-murals 2-3  
 "C" Club 4

RICHARD CLARY KNIGHT

Tornado Tommies 3-4  
 Orchestra 2-3  
 Hi Y 2-3-4  
 Stage Mgr. 3

GEORGE KNOTTs

Boys' Quartette 2-3-4  
 Orchestra 2-3  
 Band 2-3-4  
 Operetta 3

MELVIN KRIGEL

Band 2-3-4  
 Orchestra 2-3-4  
 Junior Play 3  
 French Club 2-3  
 Science Club 4

GLADYS B. LAMB

Girl Reserves 2-3-4

LEO LATIMER

Chanute 2  
 Osawatomie 3  
 Fi Ki Players 4

DONARETHA LAWTON

Glee Club 2-3-4  
 Operetta 2-3-4  
 Dunbar Club 2-3-4  
 Dunbar Club 2-3-4  
 "Gay" 4

CLIFFORD LEWIS

Independence 2-3  
 Dunbar Club Pres. 4  
 "Dying to Live" 4  
 Intra-murals 4

RUTH LIVELY

Girl Reserves 2-3-4  
 Intra-murals 2-3-4

DONALD LOOP

Radio Club 4  
 Hi Y 4

JAMES M. LYBERGER

Pierce City, Mo., 2-3  
 Science Club 4

MELVIN MADDOX

Tornado Tommies 2-3-4  
 Glee Club 2-3  
 Quartette 2  
 Yell Leader 2-3-4  
 Intra-murals 3-4

LOUISE MAHAFFY

Girl Reserves 3-4  
 French Club 2  
 Glee Club 2-3-4  
 Student Congress 4  
 Splash Club 3

PAULINE MAHAN

Alpha Sigma Pres. 4  
 Girl Reserves 2-3

PAT MASTERS

Drum Corps 4  
 Rhythmic Circle 4  
 Splash Club 2  
 Campus Life 4  
 Intra-murals 2-3-4  
 Pres. 4

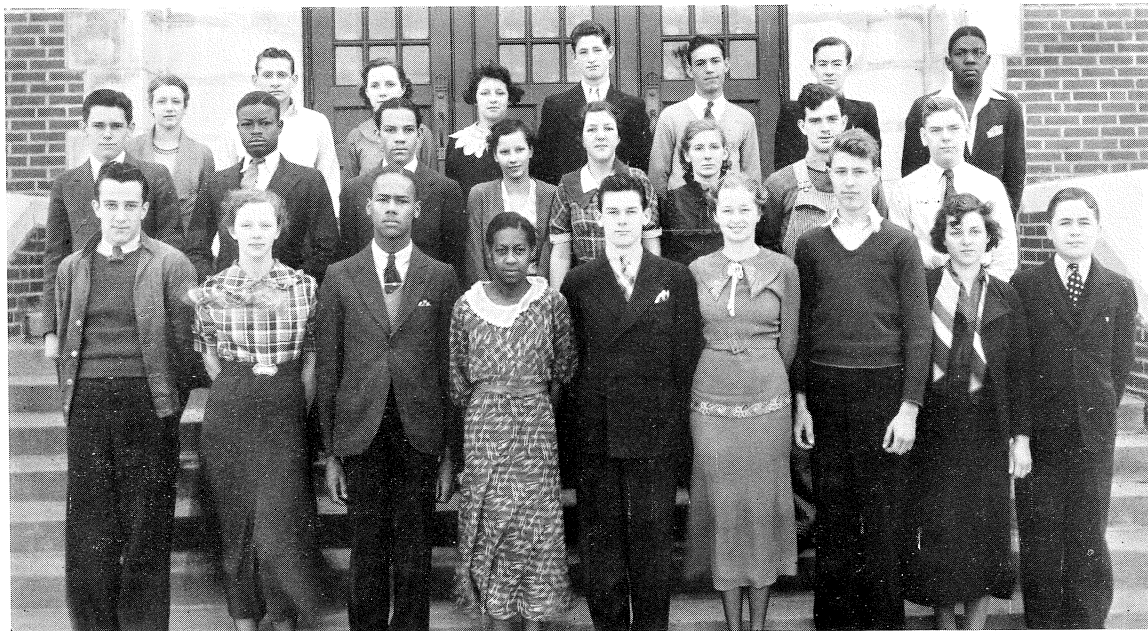
BILLY MERCER

Intra-murals 2-3-4  
 Student Congress 4

National Honor Society 4

KATHLEEN MISCH

Tornado Tillies 4  
 Girls' Quartette 2-3-4  
 Operetta 2-3-4  
 Girl Reserves 2-3



ADUDDLELL ADUDDLELL AKERS ALLEN ALLIN ALDERMAN ANDERSON AUSTIN  
 BARCROFT BANKHEAD BARKER BENNETT BETTISWORTH BIGGERSTAFF BOOKTER BRUNNER  
 BRANT BRICKER BRILEY BRILEY BRIGHTON BROWN BRUCE BUSEY BOWLUS

## Seniors

AILEEN ADUDDLELL  
 Girl Reserves 2-3

CURTIS ADUDDLELL

JOYCE AKERS  
 French Club 2-3  
 Pres. 4  
 Orchestra 2-3-4

EVA ALLEN  
 National Honor Society 4  
 Student Congress Sec. 4  
 Travel Club 4  
 Girl Reserves 3  
 Liberty 1-2

WILLIAM ALLIN  
 Beta Chi 2  
 Wrestling 2  
 Student Congress 4  
 Year Boog Staff 4  
 Stage 4  
 Travel Club 3

EMERY ALDERMAN

GEORGE ANDERSON  
 Orchestra 2-3-4  
 "Honor Bright" 4  
 French Club 2-3  
 Debate 2-3-4  
 Tornado Tommies 4  
 National Honor Society 4

JOHN AUSTIN  
 Dunbar Club 2-3-4  
 "Betty Lou" 2  
 "Bobby" 3

WENDELL BARCROFT  
 Tornado Tommies Pres. 4  
 "Honor Bright" 4  
 Pres. Youth Month 4  
 Debate 3-4  
 Student Congress 2  
 Junior Play 3

JOHN BANKHEAD  
 Operetta 3  
 Dunbar Club 2-3-4  
 Intra-murals 2-3-4

CLYDE FRANKLIN BARKER  
 Dunbar Club 3-4  
 Operetta 3  
 Intra-murals 3

RUTH BENNETT  
 Glee Club 2-3  
 Travel Club 2-3  
 Commercial Club 4

BARBARA ALICE BETTIS-  
 WORTH  
 Glee Club 2-3  
 Aviation Club 2  
 Operetta 2-3  
 Travel Club 3-4

EDITH BIGGERSTAFF  
 Spanish Club 2-3  
 French Club 4  
 Intra-murals 2

GEORGE BOOKTER  
 Football 2-3  
 Tornado Tommies 3  
 Radio Club 4

JIM BRUNNER  
 Hi-Y 2-3-4

HAROLD BRANT  
 Travel Club 4

CORA BRICKER  
 National Honor Society 4  
 Debate 3-4  
 Girl Reserves 3-4  
 Sec. of Class 4  
 Splash Club 2-3  
 Campus Life 2

WILLIAM BRILEY  
 Dunbar Club 2-3-4  
 "Betty Lou" 2  
 "Bobby" 3  
 "Governor's Daughter" 4  
 Glee Club 4

FRANCES A. BRILEY  
 Operetta 3-4  
 Dunbar Play 2  
 Dunbar Club 2-3-4  
 Glee Club 3-4

CHARLES E. BRIGHTON  
 Student Congress 2-3-4  
 Hi Y, 2  
 Sec. 3; Pres. 4  
 Tornado Tommies 4  
 Orchestra 2-3-4  
 National Honor Society 4  
 "Honor Bright" 4

MAXINE BROWN  
 National Honor Society 4  
 Tornado Tilles 4  
 V. Pres of Class 4  
 Junior Play 3  
 Orchestra 2-3-4  
 Girl Reserves 2-3

DALE BRUCE  
 Intra-murals 2-3  
 Rari Club 4  
 Splash Club 2-3  
 "Honor Bright" 4

LUCILLE BUSEY  
 Travel Club 3  
 Tri Eta 4  
 Intra-murals 2-3-4

JOE BOWLUS  
 National Honor Society 4  
 Travel Club Pres. 4  
 Debate 2-3  
 Orchestra 2  
 French Club 2



BURGHART BESSEY BRADSHAW BYLER CAUDLE CHURCH CILLESSEN CLARK CLARK CLARK  
 CLARKSON CLINE CRAWFORD CROWE CURTIS DANIEL DECKER DEWLIN  
 DONELSON DONICA DOUGLASS DUNWOODY EDMISTON EIKENBERRY EDWARDS EFFERDING

## Seniors

KENNETH BURGHART  
 Travel Club 3  
 Athletic 4

TOM BESSEY  
 Tornado Tommies 3  
 Biology Club 2

ARDEN BRADSHAW  
 Photography Club 4  
 Athletic Trainer 3-4

IRIS BYLER  
 Bartlesville, Okla., 2  
 Campus Life Editor 3  
 Fi Ki Players 3  
 Yearbook Staff 4  
 French Club 4

AVA LEE CAUDLE  
 Girl Reserves 2-3-4  
 Glee Club 3-4  
 Intra-murals 2-3-4  
 Operetta 3

WINIFRED CHURCH  
 Glee Club 2-3  
 Girl Reserves 2-3  
 Commercial Club 4

MARY F. CILLESSEN  
 Girl Reserves 2-3  
 Cabinet 4  
 Orchestra 2-3-4

ALLENE CLARK  
 Glee Club 2-3-4  
 Operetta 2-3  
 Quartette 4  
 Girl Reserves 2-3-4

OLIVER CLARK  
 Transportation Club 3-4  
 Aviation Club 2

DONZELLA M. CLARK  
 Girl Reserves 2  
 Spanish Club 3  
 Travel Club 4

MILDRED CLARKSON  
 Enid, Okla., 2-3

JUNE CLINE  
 Travel Club 2-3  
 Sec. 4  
 Operetta 2  
 Intra-murals 3

MARION CRAWFORD  
 Girl Reserves 2-3-4  
 Operetta 3

PATRICIA CROWE  
 Photography Club Sec. 4  
 Girl Reserves 2-3  
 Glee Club 2

MILLIE CURTIS  
 Fi Ki Players 3  
 Girl Reserves 2-4

PERRY B. DANIEL  
 Orchestra 2-3  
 Band 2-3  
 Travel Club 3

CHARLES DECKER  
 National Honor Society 4  
 Pres. of Class 2  
 V. Pres. Student Congress 3  
 Pres. Student Congress 4  
 Basketball 4  
 Orchestra 2-3-4

EUGENE DEWLIN  
 Aviation Club 2  
 Football 3-4  
 Travel Club 4

DELLA DONELSON  
 Girl Reserves 3-4  
 Travel Club 2

THOMAS DONICA  
 Fi Ki Players 3  
 V. Pres. 4  
 Intra-murals 3

RUBY JANE DOUGLASS  
 National Honor Society 4  
 Tornado Tillies 3-4  
 Junior Play 3  
 "Honor Bright" 4  
 Girls' Quartette 3-4  
 Orchestra 2-3-4

WILMA DUNWOODY  
 Girl Reserves 2-3-4  
 Orchestra 2-3-4  
 Intra-murals 2-3-4

VIOLA D. EDMISTON  
 Glee Club 2  
 Travel Club 3  
 Girl Reserves 4

MARY LOUISE EIKEN-  
 BERRY  
 Girl Reserves 2-3-4

CLINTON EDWARDS  
 Jay Birds 2  
 Biology Club 3

HARRY EFFERDING  
 Football 4  
 Basketball 3  
 Travel Club 4  
 "C" Club 4



TATE TATUM TESH THOMAS TODD TONGIER TOWNSON TYLER TYLER VANN VARNIER VAUGHN  
VEDINER VOGAN WALTON WARREN WATSON WEBB WEHMEYER WEIBLE WILLCOXON WESTMORELAND  
WILLIAMS WILSON WINTERS WISDOM WISHALL WULLENSCHNEIDER WULLENSCHNEIDER YOUNG YOUNG  
ZIMMERMAN HARRIS

## Seniors

- |   |   |  |   |
|---|---|--|---|
| EILEEN TATE<br>Student Congress 2<br>French Club 2<br>Girl Reserves 3-4                                   | AVA LEE VARNIER<br>Tri Eta 2-3<br>Treas. 4  | JIM WILLCOXON<br>National Honor Society 4<br>Class Pres. 3<br>V. Pres Youth Month 4<br>Football 2-4<br>Basketball 2-3-4<br>"C" Club 3<br>Pres. 4 | JOE WULLENSCHNEIDER<br>Football 2-3-4<br>Glee Club 2-3-4<br>Hi Y 2-3-4<br>Tornado Tommies 4<br>Intra-murals 2-3-4<br>Campus Life 4    |
| FRANK TATUM   | ARTHUR VAUGHN<br>Stage 4  | FRANCES LOUISE WEST-<br>MORELAND<br>Wynne, Ark., 2<br>Texarkana, Texas, 3<br>Girl Reserves   | BILL WULLENSCHNEIDER<br>Hi Y 2-3<br>Treas. 4<br>Football 3<br>Intra-murals 2-3-4<br>Glee Club 2-3                                     |
| JAMES H. TESH<br>Travel Club 4<br>Electricity Club 3  | NORMAN VEDINER<br>Electricity Club 3  | FLOSSIE MARIE WILLIAMS<br>Girl Reserves 3<br>Treas. 4<br>Orchestra 2<br>Aviation Club 2  | ROBERT YOUNG<br>Boys' Quartette<br>Orchestra 2-3-4<br>Band 3<br>Hi Y 2-3-4  |
| HOBART THOMAS   | MAXINE A. VOGAN<br>Girl Reserves 2-3<br>Cabinet 4<br>Golf Club 3-4                    | MARY WILSON<br>Tri Eta 3<br>Sec. 4<br>Aviation Club 2  | FLOY YOUNG<br>Student Congress 2-4<br>Tri Eta 2-3-4<br>Beta Chi 2<br>Intra-murals 3-4   |
| INEZ TODD<br>Tri Eta 2-3<br>Girl Reserves 4   | WILMA WALTON<br>Girl Reserves 2-3<br>Cabinet 4<br>Golf Club 3                         | JACK WINTERS<br>Football 4<br>Science Club 3<br>Orchestra 2-3-4<br>"C" Club 4  | LAURA ZIMMERMAN<br>Girl Reserves 2-4<br>Tri Eta 3<br>Intra-murals   |
| MABEL TONGIER<br>Tornado Tillies 3-4<br>Girl Reserves 2<br>Glee Club 2<br>"Honor Bright" 4                | LOUISE WARREN<br>Dunbar Club 2-3-4<br>Dunbar Operetta 3-4<br>Glee Club 2-3-4          | WARREN WISDOM<br>Travel Club 3<br>Blue Jays 2<br>Campus Life 4   | LOUISE HARRIS<br>Girl Reserves 3-4<br>Student Congress 3<br>Biology Club 2<br>Glee Club 2-3-4<br>Operetta 2-3-4<br>Intra-murals 2-3-4 |
| EVVIE TOWNSON<br>Operetta 2-3-4<br>Tornado Tommies 3-4<br>Hi Y 2-3-4<br>Intra-murals 3<br>Glee Club 2-3-4 | BETTE WATSON<br>French Club V. Pres. 4<br>Orchestra 2-3-4<br>Splash Club 2<br>Fi Ki 3 | JANE WISHALL<br>Spanish Club<br>V. Pres. 2-3<br>Girl Reserves 4  |   |
| ERNEST L. TYLER<br>Photography Club 4<br>Hi Y 2-3   | LaVERNE WEBB<br>Tornado Tillies 3-4<br>Glee Club 2-3-4                                |  |   |
| JEWELL TYLER<br>Girl Reserves 2-3-4<br>Intra-murals 2-3-4   | ADELENA WEHMEYER<br>Travel Club 2-3-4   |  |   |
| JUNO MILDRED VANN<br>Dunbar Club 2-3-4<br>Intra-murals 2-3-4<br>Glee Club 2                               | HARRY WEIBLE<br>Spanish Club 2<br>Fi Ki 4<br>Intra-murals 3                           |  |   |

## Seniors

FRANK ALFORD  
Van Buren 2-3

GEORGE BATTAGLEAR

DuMONTE BARBER  
Transportation Club 4  
Travel Club 3  
Intra-murals 3

IOLA BRAZEL  
French Club 2-3  
Fi Ki Club 4

EDGAR BELL  
Orchestra 2-3-4  
Band 2-3-4

ELLIS BIGGERSTAFF

VERNON BYNUM  
Eldorado, Okla., 2-3

ED CONWAY

PAUL CURRENS

PAUL DEARTH

LESLIE ELLISON

GEORGE GILBERT  
Travel Club 2-3-4  
Intra-murals 2-3-4

ROBERT GRIFFITH  
Travel Club 2-3-4  
Intra-murals 2-3-4

BETTY HAYDEN

ROBERT JONES

ISAAC KRIEBEL

JANE LUSK  
Aviation Club 2  
Tri Eta 3  
Travel 4

CLARA LECHLEITNER  
Travel Club 3-4

ED McMULLEN

NADEAN NORMAN  
Student Congress 2-3  
Tri Eta 2-3-4

WAYNE ORR  
Orchestra 2-3  
Band 2-3  
Fi Ki 3  
Campus Life 4  
Junior Play 3

WAYNE MYERS

DOROTHY PAHMEYER

MARY BELL PARK

IRENE READ

ORVAL STATON  
Band 2-3-4  
Orchestra 2-3-4  
Intra-murals 2-3-4  
Science Club 4  
Campus Life 4  
"Honor Bright" 4

LUCILLE SLATON  
Ponca City, Okla., 2  
Girl Reserves 3  
V. Pres., 4

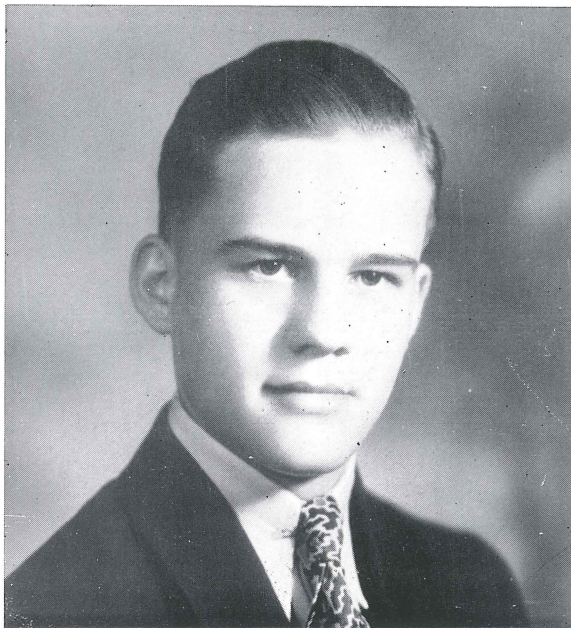
FRANCIS SMALLEY

JOHN SOURBEER  
Class Treas. 2  
Football 2  
Travel Club 3-4

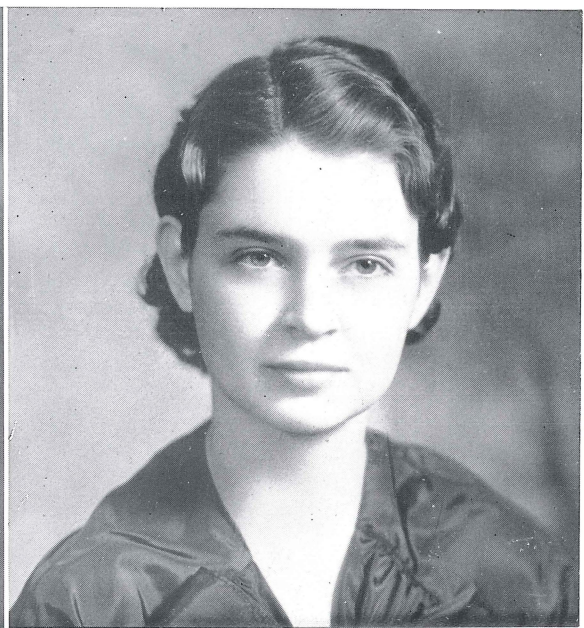
CHRISTINE SCOTT

HOBART THOMAS

EARL WRIGHT  
Aeronautics Club 2-3  
Transportation Club 4  
Student Congress 2



EARL JOHNSON



JEANETTE MORGAN

KING AND QUEEN OF THE FUN FESTIVAL

The class of 1935 has won the King and Queen contest for three consecutive years, Mr. Johnson and Miss Morgan being elected each time.



Juniors

ABBOTT ANDERSON ALLOWAY ALTER AUSTIN BLACK BENTLEY BRITTAIN BROWN BEVER COOK BRITTAIN  
COOKE CHAMBERLIN CARTER CLINE DELAPLAINE D-TAR DECKER DONALDSON EKSTRAND EVBANK EIKENBERRY  
FRY FEIL FORD FERRIS FIELDS GAYLOR GUDGEN GUY GALLI GALLI GONDER



NEL

*Pres*  
*Vice*  
*Secr*  
*Spor*

---

*John Winters*



### Student Congress

ADKINS BANOWETZ BLANTON BRIGHTON WINTERS McCASLIN KARNs WILLCOXON HILL GUDGEN COX PLATTNER  
NEISWONGER HODSHIRE STOVER JOHNSON MAHAFFY WALLIS KARNs PAULK RHODES KITTELL HURST HOOVER  
HEY LESTER SHAPLAND DECKER ALLEN GUY ECKHARDT DOERING MOSIER SMITH MITCHELL KNAPP



### National Honor Society

STEEL BRIGHTON MOSIER FIEBACH WILLCOXON ANDERSON DECKER BOWLUS  
MISCH MITCHELL HEALY SMITH DOUGLASS ALLEN BRICKER BROWN





### Girl Reserves Cabinet

MASSEY VOGAN SMART McDANIEL LARSON CURTIS CLARK  
 HAYDEN WALTON BRICKER GOCKE WILLIAMS GUDGEN CILLESSEN



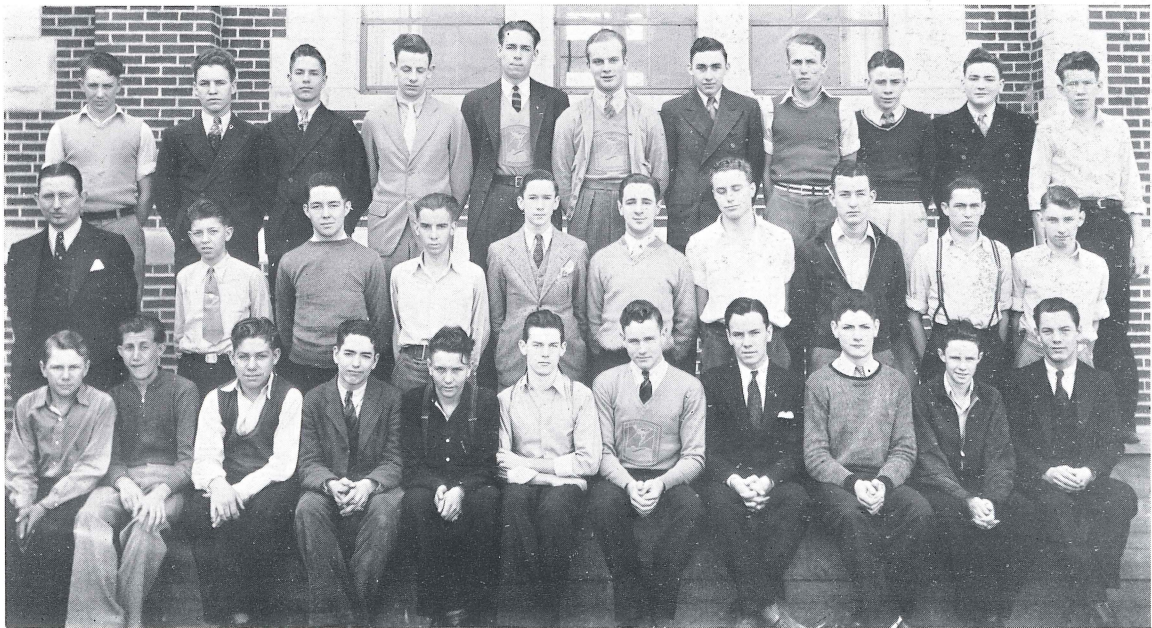
### Girl Reserves

GARDNER CROWE EIKENBERRY CHAMBERLAIN HUGHEY KARNs VARVEL WATSON RICHARDSON PASSMORE BRADY  
 HENDERSON TODD McCULLEY HASTINGS AUSTIN  
 CURTIS CAUDLE WILLIAMS DUNWOODY BRICKER GOCKE WISHALL MAHAFFEY WESTMORELAND STARMER EWBANKS  
 SHIELDS HUDDLESON GOUGH LARSON  
 WILLIAMS SCHOOLEY WILLIAMS EPPERSON KITTELL NIXON JACKMAN ZIMMERMAN WALTON PEDERSEN BOHANNON  
 McARTHUR WARREN BENDURE



### Girl Reserves

WATSON TOWNSON CILLESSEN CLARK RYAN FOLAND STUDEBAKER MOORE GELVIN ROBERTSON LAMB DeTAR  
CRAWFORD ADUDDALL  
HEPNER LOGAN KALLENBERGER MASSEY BLICK McDANIEL SMART SLATON RAY SCHIERLMANN ADUDDALL HAYDEN  
CILLESSEN  
STONG HULSE DILLON PHEGLEY GAYLOR HILL VOGAN GUDGEN EDMISTON WEST FRY SPENCER



### Hi-Y

KAUFFMAN CONRAD NIESWONGER KONZ KARNS ROSS BLANTON BETTISWORTH HICKS ROBINSON SKAGGS  
JACKSON BRADLEY YOUNG SMITH STOVER WEINBERG NICOLAS HODSHIRE HARDING RAY  
REED HUDGINGS BROWN TAYLOR KELLY BRIGHTON McDONALD WULLENSCHNEIDER DECKER KIMBREL  
WULLENSCHNEIDER



### Debate

KNAPP WHITE JOHNSON KIRBY STEEL ANDERSON PLATTNER HENDRIX  
HALL JAMES NELSON BANOWETZ ENGLUND ROWLAND HEALY BRICKER SHAPLAND KRIGEL  
ADKINS BLACK BENTLEY TUTTLE WEINBERG MOSIER SEABORN BARCROFT KITTELL



### Fi Ki Players

HALL CAMPBELL COOK PAULK ROBB JOHNSON LEMON McMILLAN BARDENHAGEN HAMLIN LATIMER  
SMITH SCHUSTER MORRISON DONALDSON KIRBY BULLARD PLATTNER WALTON JAMES KILLION  
NELSON McGREW RUTHRAUFF ABBOTT DONICA BRITTAIN RICHMIRE ENGLUND DAESCHNER





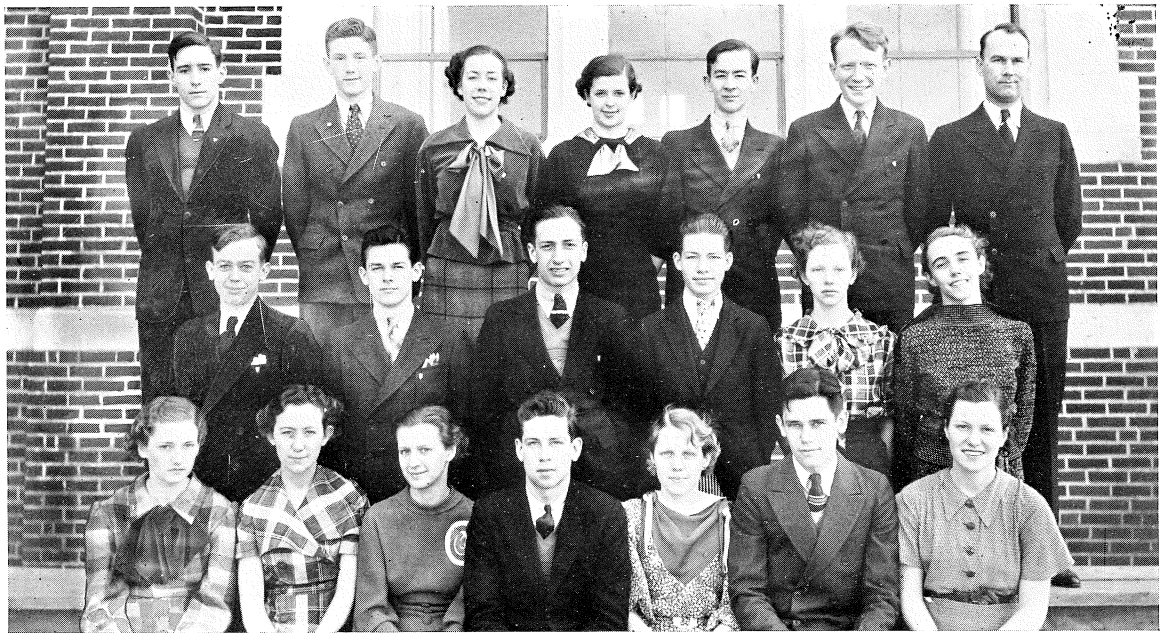
### Orchestra

Carter Gillam Moore Groth Cillissen Knapp Bettisworth Harding Neiswonger Caulfield Lemon Cabill Cathers Maxson Mecum Harding  
 Ray Smith Dunwoody Sparks Singleton Plattner Estes Walton Cramer Eckhardt Kriegel Bessey Haines Brubaker Taylor  
 Hastings Holt Pfister Cillisen Akers Hardin Logan Campbell Doering Kirby Dunwoody Williams Saunders Daniels Haff Adkins Anderson  
 Bettisworth Brighton Daniel Mercer Mosher Young Schuster Tilcock Stebbins Summers Nelson Medford Moore Reitz Crawford  
 Yount Huddleston Phegley Brown Mitchell Douglass Watson Robb Cook Powers Paulk Schuetz Studebaker Aduddell Woolcott Burt  
 Branstetter Griese Mitchell Sparks James Roberts Halloran Halloran Stover Staton Winters Decker McDonald Kelly



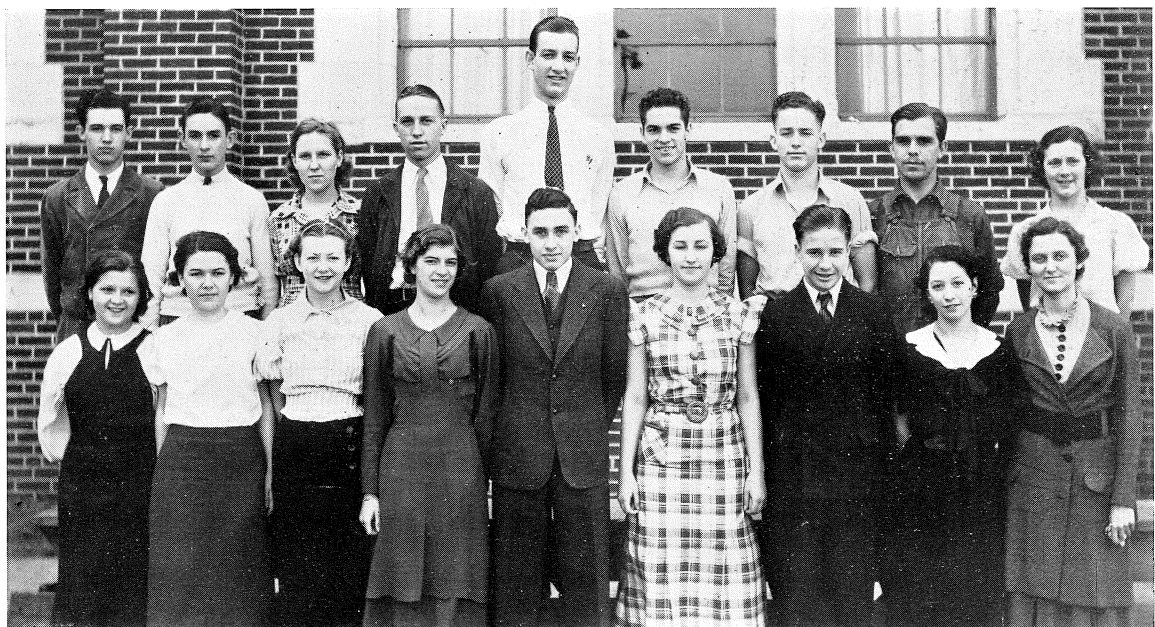
### Glee Club

Decker Young Crozier Ross Branstetter McCulley Stover Weinberg Lester Manis Kirby Knotts Cook Starmer Ballew  
 Hicks Englund Stewart Rowland McCarter Slusher Keith Kirby Robson Morgan Barber Ryman Morrison Caudle Gelvin Donnelly Snider Martin  
 Donnel Daniel Pahmeyer Harlin Watkins Massey Richmire Richardson Watson Epperson Brittain Webb Bever Spoonamore Wood York Slaton  
 Nelson Slagle Kendell Heintz  
 Paulk Joseph Struve Chance Strimple DeTar Cline Anderson Slusher Williams Cathers Hurley Sitz Allen Saunders Jones Banowetz Schooley  
 Holt Speary  
 Robb Douglass Nelson Passmore Johnson Williams Townson Hall Dewlin Jackson Holland Pyatt Cillessen Powell Davis Slater



### Senior Play Cast

WINTERS	JOHNSON	DOUGLASS	MITCHELL	ANDERSON	STEEL	HENDRIX
STATON	BRIGHTON	KNIGHT	McMILLAN	BRICKER	HEALY	
SMITH	MOORE	TONGIER	KITTELL	SMITH	BARCROFT	RYMAN



### Junior Play Cast

FLETCHER	McDONALD	RICHMIRE	BEAVER	KIRBY	GUY	LEMON	HAYDEN	HAYES
BRITAIN	BENTLEY	HILL	ABBOTT	BLANTON	ALTER	HEY	JONES	DAESCHNER



### Tornado Tillies

MITCHELL	DOUGLASS	BROWN	WALL	MISCH	HEALY
GARTLEY	TONGIER	GLASER	MORGAN	LOWE	
HAYES	SMITH	KIRBY	BENTLEY	TUTTLE	WEBB



### Tornado Tommies

FIELDS	KNIGHT	GREER	ROSS	McDANIEL	STEEL
CURRIER	ROBINSON	LESTER	KARNS	JOHNSON	
ANDERSON	KITTELL	MOSIER	BARCROFT	MADDOX	



### Sunbonnet Girl

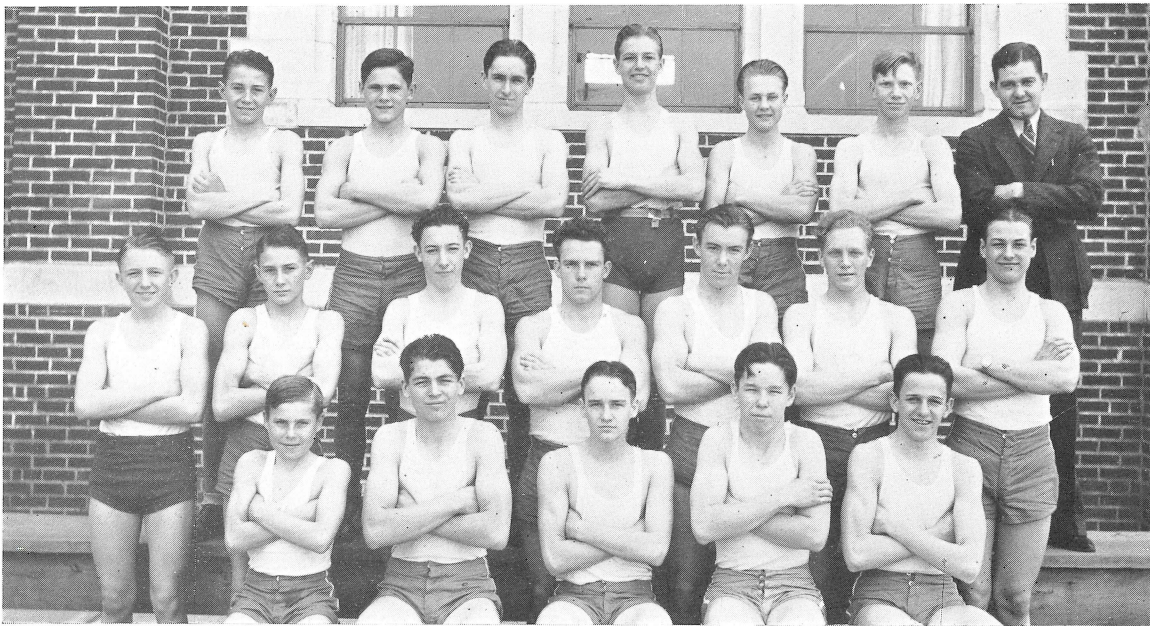
Operetta presented by Boys' and Girls' Glee Clubs under the direction of Mr. Neil Branstetter. The principals were: Kathleen Misch, Ruby Johnson, Alma Richmire, Roberta Mitchell, Bette Watson, Betty Cillessen, George Knotts, Robert Young, Grace DeTar, Vernon Kirby, Lee Heinz, Betty Jane Doering, John Speary, Bill Steel, Allene Clark, Evvie Townson.



### Dunbar Club

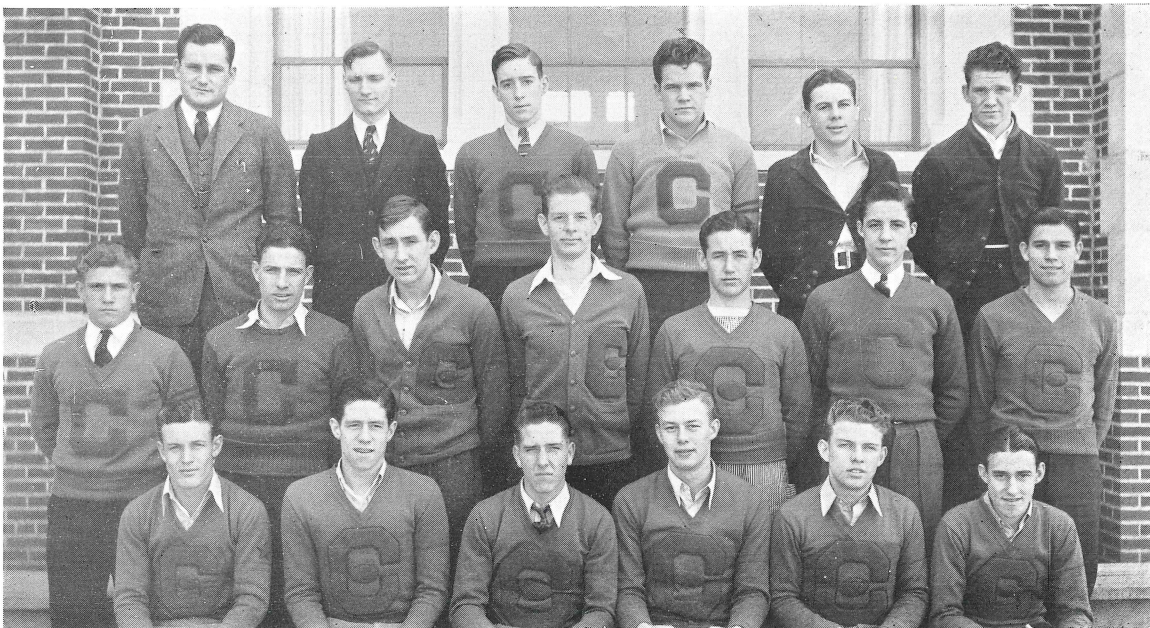
BRILEY CHAMBERS CLARK AUSTIN MASTERS FAULKS McBEE MAY CARTWRIGHT BOGANNEY MASTERS GAINS  
 OTEN BANKHEAD JONES LAWTON CARTWRIGHT STROTHERS MEDLOCK BRILEY WISNER NEAL  
 AUSTIN ORMAN KEITH LONGACKER TAYLOR RHODES WILLIAMS BOGANNEY MONROE THOMPSON





Athletic Club

SPARKS	SNIDER	BURGHART	GRAY	ALBERTS	BARTHOLOMEW	LE CLERE
WHITMORE	SPARKS	MOSHER	STONG	YONKERS	DOTY	MARTIN
TILCOCK	EVANS	WOODS	ANDERSON	SIMPSON		



"C" Club

BOEHM	LEWIS	McCASLIN	WINTERS	ARMSTRONG	MACE	GRAY
HURST	KITCHENS	HILL	REED	TIPTON	WILLCOXON	SAMUELS
	SMITH	BURKE	NICHOLS	BENTLEY	BENEFIEL	

Grace DeTar

Charles Johnson

Autographs

Tom Smith  
 Bell Smith  
 John Spivey  
 Helen Bapsett  
 Colin Cothens  
 Vernon Plattner  
 Lilian French  
 Isabell Hallis  
 Duke West  
 Jack Kigel  
 Philma Allen  
 Florence Bartholow  
 Nadine Rabding  
 Arvin Epperson  
 Mary Lee Slicks  
 Geraldine Walcott  
 Elsa Mae White  
 Billie Evelyn Wicks  
 Margie Colton '35'  
 Emma Lee Perry  
 Ruby Jane Douglass  
 Maxine Benning  
 Margaret G. Chamberlain  
 Edna Borden  
 Maudie Terry  
 Evelyn Metz "Metz" '35

Shirley Karus  
 Helen Thomason  
 Betty "Boop" Downing  
 Norma Mae Nelson  
 Triela Schuetz  
 Helen Fallenger  
 Doris Kirell  
 Hazel Kendall  
 John Williams  
 Elinor Kiehn  
 Elizabeth Adkins  
 Jean Campbell  
 Evelyn Swoley  
 Elvira B. Stinson  
 Ruth Virginia Huddleson  
 Leon Niswonger  
 Frank H. Tilcock  
 Lurline Steimer  
 John Winters  
 Don McCaslin  
 Ernest Friskie  
 Leah Pruitt  
 Anita Ritter  
 Pauline Richards

# Autographs

Pety Gregory

Carrie G. Webb.

Dorene Hoover

Coach "Babe" Lewis

Virginia Brown

Marquette Dillon

Harriette Weible

Hazel "Jimmie" Kendall

Bob Torrey.

Robert Mitchell