

LEA Name : Seneca Valley SD
Address : 124 Seneca School Rd
Harmony , PA 16037

County : Butler
AUN Number : 104107903
LEA Type : SD

**Annual Financial Report
Accuracy Certification Statement**

For Fiscal Year Ending
6/30/2019

Pennsylvania Department of Education
&
Office of Comptroller Operations

PDE-2056: Intermediate Unit
PDE-2057: School District, AVTS/CTC, Charter School,
and Special Program Jointure

CERTIFICATION: By signing this page I agree that the electronic data submitted is a complete and accurate statement of the financial operations and status of the local education agency for the fiscal year. It has been prepared in accordance with generally accepted accounting principles and established Commonwealth of PA reporting guidelines.



Chief School Administrator Signature

11-20-19

Date



Board Secretary Signature

Date

Celeste R Foley

Contact Person

(724)452-6040

Ext :1622

Contact Person Telephone Number

foleycr@svsd.net

Contact Person E-mail Address

Contact Person Fax Number

Audit Certification
Annual Financial Report:
For Fiscal Year Ending **6/30/2019**
(Pursuant to PA School Code Section 218(b))

LEA Name : Seneca Valley SD
AUN Number : 104107903
County : Butler

Audit Certification Due: 12/31/2019

This certification is applicable to the Annual Financial Report data submitted through the Consolidated Financial Reporting System on: _____
Date

Auditing Firm:

CERTIFICATION: By signing this page I agree that the financial statements of the school have been properly audited as noted above pursuant to Article XXIV, and in the auditor's professional opinion, the Annual Financial Report (PDE-2057) submitted on the date referenced is materially consistent with the audited financial statements.

Chief School Administrator

Board Secretary

Signature

Date

Signature

Date

Celeste R Foley

Contact Person

foleycr@svsd.net

Contact Person E-mail Address

(724)452-6040

Ext :1622

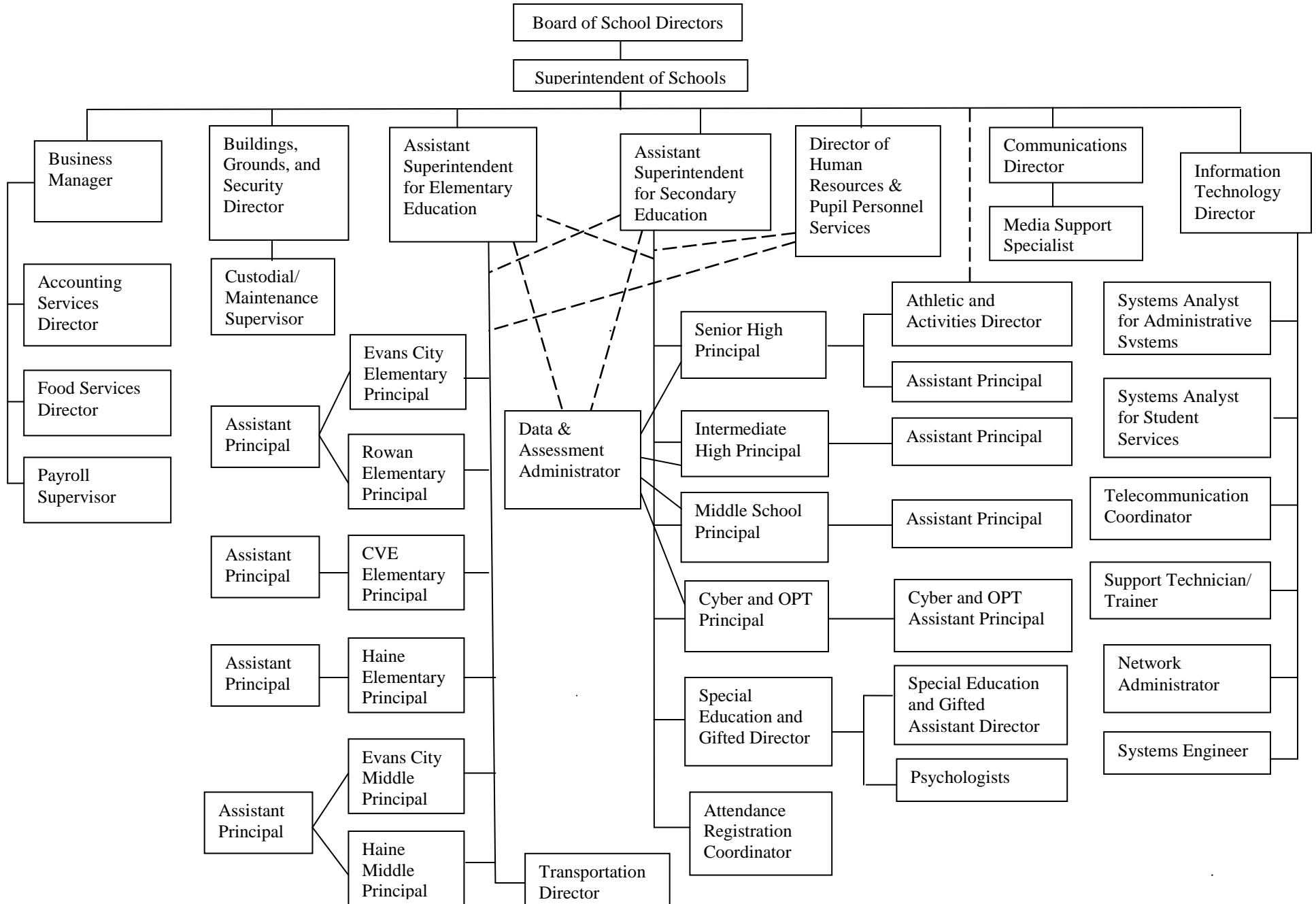
Contact Person Telephone Number

Contact Person Fax Number

SENECA VALLEY SCHOOL DISTRICT

No. 008

SECTION: LOCAL BOARD PROCEDURES
 TITLE: ORGANIZATION CHART
 ADOPTED:
 REVISED: October 20, 2014



<u>Val Number</u>	<u>Description</u>	<u>Justification</u>
30635	Revenue Detail: Current Tax Revenue amount cannot exceed 50% variance from prior year amount. Correct the data or enter a justification. 6140, Current AFR Rev Detail: \$201,566.29 6140, Prior AFR Rev Detail: \$134,324.70	Verified increased collections due to community growth.
42420	Expenditure Detail: Total current year 2700-513 expenditure varies from prior year by 10%. Correct the data or enter a justification. 2700-513, AFR Exp Detail: \$8,245,706.78 2700-513, PY AFR Amount: \$7,453,255.84	Official bus runs were added due to scheduling changes causing the increase of 10%.

Amounts Expressed in Whole Dollars

<u>General Fund</u>	<u>Public Purpose Trust</u>	<u>Other Compt Approved</u>	<u>Athletic / Activity</u>	<u>Capital Reserve (690.</u>
<u>(10)</u>	<u>(27)</u>	<u>(28)</u>	<u>(29)</u>	<u>1850)</u>
				<u>(31)</u>

Assets And Deferred Outflows Of Resources

Assets

0100 Cash and Cash Equivalents	28,035,198
0110 Investments	13,643,525
0120 Taxes Receivable	633,512
0130 Due From Other Funds	242,404
0141 Due From Other Governments	6,050,418
0142 State Revenue Receivable	
0143 Federal Revenue Receivable	
0145 Other Intergovernmental Revenue Receivable	
0146 Due from Primary Government	
0147 Due from Component Unit	
0150 Other Receivables	90,926
0170 Inventories	
0180 Prepaid Expenses (Expenditures)	513,000
0190 Other Current Assets	

Total Assets \$49,208,983

0910 Deferred Outflows of Resources

Total Assets And Deferred Outflows Of Resources \$49,208,983

Amounts Expressed in Whole Dollars

	<u>Capital Reserve (1431)</u> <u>(32)</u>	<u>Other Capital Projects</u> <u>Fund</u> <u>(39)</u>	<u>Debt Service</u> <u>(40)</u>	<u>Permanent</u> <u>(90)</u>	<u>Total Governmental</u> <u>Funds</u>
Assets And Deferred Outflows Of Resources					
Assets					
0100 Cash and Cash Equivalents		16,585,511			44,620,709
0110 Investments		43,755,735			57,399,260
0120 Taxes Receivable					633,512
0130 Due From Other Funds					242,404
0141 Due From Other Governments					6,050,418
0142 State Revenue Receivable					
0143 Federal Revenue Receivable					
0145 Other Intergovernmental Revenue Receivable					
0146 Due from Primary Government					
0147 Due from Component Unit					
0150 Other Receivables					90,926
0170 Inventories					
0180 Prepaid Expenses (Expenditures)					513,000
0190 Other Current Assets					
Total Assets		\$60,341,246			\$109,550,229
0910 Deferred Outflows of Resources					
Total Assets And Deferred Outflows Of Resources		\$60,341,246			\$109,550,229

Amounts Expressed in Whole Dollars	<u>General Fund</u> <u>(10)</u>	<u>Public Purpose Trust</u> <u>(27)</u>	<u>Other Compt Approved</u> <u>(28)</u>	<u>Athletic / Activity</u> <u>(29)</u>	<u>Capital Reserve (690.</u> <u>1850)</u> <u>(31)</u>
Liabilities And Deferred Inflows Of Resources And Fund Balances					
Liabilities					
0400 Due to Other Funds	214,409				
0411 Due to Other Governments					
0412 Due to Primary Government					
0413 Due to Component Unit					
0420 Accounts Payable	1,856,301				
0430 Contracts Payable					
0440 Current Portion of Long-Term Debt					
0450 Short-Term Payables					
0461 Accrued Salaries and Benefits	7,783,717				
0462 Payroll Deductions and Withholding	5,889,934				
0480 Unearned Revenues	77,191				
0490 Other Current Liabilities	99,406				
Total Liabilities	\$15,920,958				
0950 Deferred Inflows of Resources					
Fund Balances					
0810 Nonspendable Fund Balance	513,000				
0820 Restricted Fund Balance	177,780				
0830 Committed Fund Balance	2,250,000				
0840 Assigned Fund Balance	21,347,245				
0850 Unassigned Fund Balance	9,000,000				
Total Fund Balances	\$33,288,025				
Total Liabilities, Deferred Inflows Of Resources And Fund Balances	\$49,208,983				

Amounts Expressed in Whole Dollars	<u>Capital Reserve (1431)</u> <u>(32)</u>	<u>Other Capital Projects</u> <u>Fund</u> <u>(39)</u>	<u>Debt Service</u> <u>(40)</u>	<u>Permanent</u> <u>(90)</u>	<u>Total Governmental</u> <u>Funds</u>
Liabilities And Deferred Inflows Of Resources And Fund Balances					
Liabilities					
0400 Due to Other Funds					214,409
0411 Due to Other Governments					
0412 Due to Primary Government					
0413 Due to Component Unit					
0420 Accounts Payable		399,239			2,255,540
0430 Contracts Payable					
0440 Current Portion of Long-Term Debt					
0450 Short-Term Payables					
0461 Accrued Salaries and Benefits					7,783,717
0462 Payroll Deductions and Withholding					5,889,934
0480 Unearned Revenues					77,191
0490 Other Current Liabilities					99,406
Total Liabilities		\$399,239			\$16,320,197
0950 Deferred Inflows of Resources					
Fund Balances					
0810 Nonspendable Fund Balance					513,000
0820 Restricted Fund Balance		59,942,007			60,119,787
0830 Committed Fund Balance					2,250,000
0840 Assigned Fund Balance					21,347,245
0850 Unassigned Fund Balance					9,000,000
Total Fund Balances		\$59,942,007			\$93,230,032
Total Liabilities, Deferred Inflows Of Resources And Fund Balances		\$60,341,246			\$109,550,229

Amounts Expressed in Whole Dollars	<u>General Fund</u> <u>(10)</u>	<u>Public Purpose Trust</u> <u>(27)</u>	<u>Other Compt Approved</u> <u>(28)</u>	<u>Athletic / Activity</u> <u>(29)</u>	<u>Capital Reserve (690.</u> <u>1850)</u> <u>(31)</u>
Revenues					
6000 Revenue from Local Sources	96,230,792				
7000 Revenue from State Sources	35,249,126				
8000 Revenue from Federal Sources	994,693				
Total Revenues	\$132,474,611				
Expenditures					
1000 Instruction	80,190,322				
2000 Support Services	35,084,577				
3000 Operation of Non-Instructional Services	2,200,553				
4000 Facilities Acquisition, Construction and Improvement Services	39,832				
5110 Debt Service	10,000,551				
5130 Refund of Prior Year Revenues / Receipts					
Total Expenditures	\$127,515,835				
Excess (Deficiency) Of Revenues Over Expenditures	\$4,958,776				
Other Financing Sources (Uses)					
9110 Face Value of Bonds Issued					
9120 Proceeds from Refunding of Bonds					
9130 Bond Premiums					
9200 Proceeds from Extended-Term Financing					
9300 Interfund Transfers - IN					
9400 Sale of or Compensation for Loss of Fixed Assets					
9710 Transfers from Component Units					
9720 Transfers from Primary Governments					
9910 Other Financing Sources Not Listed in the 9000 Series					
9990 Insurance Recoveries					
5120 Debt Service – Refunded Bonds					
5150 Bond Discounts					
5200 Interfund Transfers – Out	5,000,000				
5300 Transfers Out to Component Units/Primary Governments					
Total Other Financing Sources (Uses)	(\$5,000,000)				

Amounts Expressed in Whole Dollars	<u>Capital Reserve (1431)</u> <u>(32)</u>	<u>Other Capital Projects</u> <u>Fund</u> <u>(39)</u>	<u>Debt Service</u> <u>(40)</u>	<u>Permanent</u> <u>(90)</u>	<u>Total Governmental</u> <u>Funds</u>
Revenues					
6000 Revenue from Local Sources		1,220,229			97,451,021
7000 Revenue from State Sources					35,249,126
8000 Revenue from Federal Sources					994,693
Total Revenues		\$1,220,229			\$133,694,840
Expenditures					
1000 Instruction					80,190,322
2000 Support Services					35,084,577
3000 Operation of Non-Instructional Services					2,200,553
4000 Facilities Acquisition, Construction and Improvement Services		4,068,045			4,107,877
5110 Debt Service					10,000,551
5130 Refund of Prior Year Revenues / Receipts					
Total Expenditures		\$4,068,045			\$131,583,880
Excess (Deficiency) Of Revenues Over Expenditures		(\$2,847,816)			\$2,110,960
Other Financing Sources (Uses)					
9110 Face Value of Bonds Issued					
9120 Proceeds from Refunding of Bonds					
9130 Bond Premiums		2,722,443			2,722,443
9200 Proceeds from Extended-Term Financing		17,495,000			17,495,000
9300 Interfund Transfers - IN		5,000,000			5,000,000
9400 Sale of or Compensation for Loss of Fixed Assets					
9710 Transfers from Component Units					
9720 Transfers from Primary Governments					
9910 Other Financing Sources Not Listed in the 9000 Series					
9990 Insurance Recoveries					
5120 Debt Service – Refunded Bonds					
5150 Bond Discounts					
5200 Interfund Transfers – Out					5,000,000
5300 Transfers Out to Component Units/Primary Governments					
Total Other Financing Sources (Uses)		\$25,217,443			\$20,217,443

Amounts Expressed in Whole Dollars	<u>General Fund</u> <u>(10)</u>	<u>Public Purpose Trust</u> <u>(27)</u>	<u>Other Compt Approved</u> <u>(28)</u>	<u>Athletic / Activity</u> <u>(29)</u>	<u>Capital Reserve</u> <u>(690.</u> <u>1850)</u> <u>(31)</u>
Special And Extraordinary Items					
9920 Special Items – Gains					
9930 Extraordinary Items – Gains					
5520 Special Items – Losses					
5530 Extraordinary Items – Losses					
Net Change In Fund Balances	(\$41,224)				
Fund Balance					
0001 Fund Balance - Beginning of Fiscal Year	33,329,250				
Fund Balance - End Of Year	\$33,288,026				

Amounts Expressed in Whole Dollars	<u>Capital Reserve (1431)</u> <u>(32)</u>	<u>Other Capital Projects</u> <u>Fund</u> <u>(39)</u>	<u>Debt Service</u> <u>(40)</u>	<u>Permanent</u> <u>(90)</u>	<u>Total Governmental</u> <u>Funds</u>
Special And Extraordinary Items					
9920 Special Items – Gains					
9930 Extraordinary Items – Gains					
5520 Special Items – Losses					
5530 Extraordinary Items – Losses					
Net Change In Fund Balances		\$22,369,627			\$22,328,403
Fund Balance					
0001 Fund Balance - Beginning of Fiscal Year		37,572,380			70,901,630
Fund Balance - End Of Year		\$59,942,007			\$93,230,033

Amounts Expressed in Whole Dollars	<u>Food Service</u> <u>(51)</u>	<u>Child Care</u> <u>Operations</u> <u>(52)</u>	<u>Other Enterprise</u> <u>(58)</u>	<u>TOTAL</u>	<u>Internal Service</u> <u>(60)</u>
Assets And Deferred Outflows Of Resources					
Current Assets					
0100 Cash and Cash Equivalents	1,710,945			1,710,945	
0110 Investments					
0130 Due From Other Funds	200,703			200,703	
0141 Due From Other Governments	97,614			97,614	
0142 State Revenue Receivable					
0143 Federal Revenue Receivable					
0146 Due from Primary Government					
0147 Due from Component Unit					
0150 Other Receivables					
0170 Inventories	63,576			63,576	
0180 Prepaid Expenses (Expenditures)					
0190 Other Current Assets					
Total Current Assets	\$2,072,838			\$2,072,838	
Noncurrent Assets					
0211 Land					
0212 Site Improvements (Net)					
0220 Buildings and Building Improvements (Net)					
0230 Machinery, Equipment and Furniture (Net)	167,049			167,049	
0250 Construction in Progress					
0260 Long Term Prepayments					
0290 Other Noncurrent Assets					
Total Noncurrent Assets	\$167,049			\$167,049	
0910 Deferred Outflows of Resources	666,044			666,044	
Total Assets And Deferred Outflows Of Resources	\$2,905,931			\$2,905,931	

LEA : 104107903 Seneca Valley SD

Printed 11/21/2019 3:49:32 PM

Page - 2 of 2

Amounts Expressed in Whole Dollars	<u>Food Service</u> (51)	<u>Child Care</u> <u>Operations</u> (52)	<u>Other Enterprise</u> (58)	<u>TOTAL</u>	<u>Internal Service</u> (60)
Liabilities And Deferred Inflows Of Resources And Net Position					
Current Liabilities					
0400 Due to Other Funds	242,404			242,404	
0411 Due to Other Governments					
0413 Due to Component Unit					
0420 Accounts Payable	108,144			108,144	
0430 Contracts Payable					
0440 Current Portion of Long-Term Debt					
0450 Short-Term Payables					
0461 Accrued Salaries and Benefits					
0462 Payroll Deductions and Withholding					
0480 Unearned Revenues	50,917			50,917	
0490 Other Current Liabilities					
Total Current Liabilities	\$401,465			\$401,465	
Noncurrent Liabilities					
0510 Bonds Payable					
0520 Extended-Term Financing Agreements Payable					
0530 Lease-Purchase Obligations					
0540 Accumulated Compensated Absences	2,281			2,281	
0550 Authority Lease Obligations					
0560 Other Post-Employment Benefits (OPEB)	165,880			165,880	
0570 Net Pension Liability	3,819,280			3,819,280	
0599 Other Noncurrent Liabilities					
Total Noncurrent Liabilities	\$3,987,441			\$3,987,441	
Total Liabilities	\$4,388,906			\$4,388,906	
0950 Deferred Inflows of Resources	65,400			65,400	
Net Position					
0791 Net Investment in Capital Assets	167,049			167,049	
0008 Restricted Net Position (0792 – 0798)					
0799 Unrestricted Net Position	(1,715,424)			(1,715,424)	
Total Net Position	(\$1,548,375)			(\$1,548,375)	
Total Liabilities And Deferred Inflows Of Resources And Net Position	\$2,905,931			\$2,905,931	

Amounts Expressed in Whole Dollars	<u>Food Service</u> <u>(51)</u>	<u>Child Care Operations</u> <u>(52)</u>	<u>Other Enterprise</u> <u>(58)</u>	<u>TOTAL</u>	<u>Internal Service</u> <u>(60)</u>
Operating Revenues					
6600 Food Service Revenue	1,858,508			1,858,508	
0071 Charges for Services					
0072 Other Operating Revenue					
Total Operating Revenues	\$1,858,508			\$1,858,508	
Operating Expenses					
100 Personnel Services – Salaries	1,011,362			1,011,362	
200 Personnel Services – Employee Benefits	565,858			565,858	
300 Purchased Professional and Technical Services	9,975			9,975	
400 Purchased Property Services	55,966			55,966	
500 Other Purchased Services	914,263			914,263	
600 Supplies	366,320			366,320	
740 Depreciation	44,946			44,946	
810 Dues and Fees	3,942			3,942	
890 Miscellaneous Expenditures					
Total Operating Expenses	\$2,972,632			\$2,972,632	
Operating Income (Loss)	(\$1,114,124)			(\$1,114,124)	
Non Operating Revenues (Expenses)					
6500 Earnings on Investments	1,161			1,161	
6920 Contributions and Donations from Private Sources					
6930 Gains or Losses on Sale of Fixed Assets					
6991 Refunds of a Prior Year Expenditure					
7000 Revenue from State Sources	264,602			264,602	
8000 Revenue from Federal Sources	831,302			831,302	
9990 Insurance Recoveries					
820 Claims and Judgments Against the LEA					
830 Interest					
TOTAL Non Operating Revenues (Expenses)	\$1,097,065			\$1,097,065	
Income (Loss) Before Contributions And Transfers	(\$17,059)			(\$17,059)	

Amounts Expressed in Whole Dollars	<u>Food Service</u> <u>(51)</u>	<u>Child Care Operations</u> <u>(52)</u>	<u>Other Enterprise</u> <u>(58)</u>	<u>TOTAL</u>	<u>Internal Service</u> <u>(60)</u>
Contributions, Transfers, and Special and Extraordinary Items					
5200 Interfund Transfers – Out					
5300 Transfers Out to Component Units/Primary Governments					
5520 Special Items – Losses					
5530 Extraordinary Items – Losses					
9300 Interfund Transfers - IN					
9500 Capital Contributions					
9700 Transfers IN From Component Units/Primary Governments					
9920 Special Items – Gains					
9930 Extraordinary Items – Gains					
Change In Net Position	(\$17,059)			(\$17,059)	
0002 Net Position - Beginning of Fiscal Year	(1,531,316)			(1,531,316)	
0003 Accounting Changes / Residual Equity Transfers					
Net Position - End Of Year	(\$1,548,375)			(\$1,548,375)	

Amounts Expressed in Whole Dollars	<u>Food Service</u> <u>(51)</u>	<u>Child Care Operations</u> <u>(52)</u>	<u>Other Enterprise</u> <u>(58)</u>	<u>TOTAL</u>	<u>Internal Service(60)</u>
Cash Flows From Operating Activities					
0011 Cash Receipts From Users	1,873,136			1,873,136	
0012 Cash Receipts From Assessments Made to Other Funds					
0013 Cash Receipts From Earnings on Investments					
0014 Cash Receipts From Other Operating Revenue					
0015 Cash Payments To Employees For Services	1,477,002			1,477,002	
0016 Cash Payments For Insurance Claims					
0017 Cash Payments To Suppliers For Goods and Services	810,387			810,387	
0018 Cash Payments For Other Operating Expenses					
Net Cash Provided By (Used For) Operating Activities	(\$414,253)			(\$414,253)	
Cash Flows From Non-Capital Financing Activities					
0021 Receipts From Local Sources - 6000					
0022 Receipts From State Sources - 7000	595,301			595,301	
0023 Receipts From Federal Sources -8000					
0024 Notes and Loans Received (Repaid)					
0025 Interest Paid on Notes/Loans - 5100-830					
0026 Operating Transfers In (Out)/Residual Equity Trans					
0027 Operating Transfers In (Out) Primary Government / Comp Unit					
0028 Receipts From Refund of Prior Year Expenditures - 6991					
0029 Special and Extraordinary Gains (losses)					
0030 Receipts from Insurance Recoveries -9990					
Net Cash Prov By (Used for) Non-Capital Financing Activities	\$595,301			\$595,301	
Cash Flows From Capital and Related Financing Activities					
0031 Payments For Fac Acq, Const, and Imp - 4000					
0032 Gain / (Loss) on Sale of Fixed Assets - 6930					
0033 Proceeds From Extended Term Financing - 9200					
0034 Principal Paid on Financing Agreements					
0035 Interest Paid on Financing Agreements - 5100-830	1,161			1,161	
0036 (Inc) Dec in Contributed Capital					
Net Cash Prov By (Used for) Capital and Related Financing Activities	\$1,161			\$1,161	
Cash Flows From Investing Activities					
0041 Earnings on Investments - 6500					
0042 Purchase of Inv Securities / Deposits to Inv Pools					
0043 Receipts From Investment Pool Withdrawals					
0044 Proceeds from Sale and Maturity of Inv Securities					

0045 Loans Received (Paid)

Net Cash Prov By (Used for) Investing Activities

	<u>Food Service</u> <u>(51)</u>	<u>Child Care Operations</u> <u>(52)</u>	<u>Other Enterprise</u> <u>(58)</u>	<u>TOTAL</u>	<u>Internal Service</u> <u>(60)</u>
Net Increase (Decrease) in Cash Flows	182,209			182,209	
0004 Cash and Cash Equivalents Beginning of Year	1,464,985			1,464,985	
Cash and Cash Equivalents at Year End	\$1,647,194			\$1,647,194	
Reconciliation of Operating Income (Loss) To Net Cash Provided by (Used For) Operating Activities					
0005 Operating Income (Loss) per REP	(1,114,124)			(1,114,124)	
Adjustments					
0051 Depreciation and Net Amortization	263,361			263,361	
0052 Provision for Uncollectible Accounts					
0053 Other Adjustments	98,299			98,299	
Effect of Changes in Assets, Liabilities, Deferred Outflows and Deferred Inflows					
0054 (Inc) Dec In Accounts Receivable (0120-0150)	1,788			1,788	
0055 Advances to Other Funds (0160)	134,731			134,731	
0056 (Inc) Dec in Inventories (0170)	15,892			15,892	
0057 (Inc) Dec in Prepaid Expenses (0180)	4,673			4,673	
0058 (Inc) Dec in Other Current or Noncurrent Assets					
0064 Deferred Outflows (0910)					
0059 Inc (Dec) in Accounts Payable (0400-0450)					
0060 Inc (Dec) in Accrued Salaries/Benefits (0461)					
0065 Inc (Dec) in Net Pension Liabilities (0570)					
0066 Inc (Dec) in Other Postemp Benefit Oblig (0560)					
0061 Inc (Dec) in Payroll Deductions/Withholding (0462)	200,703			200,703	
0062 Inc (Dec) in Unearned Revenue (0480)	(19,445)			(19,445)	
0063 Inc (Dec) in Other Current or Noncurrent Liabilities	(131)			(131)	
0067 Deferred Inflows (0950)					
Total Adjustments	\$699,871			\$699,871	
Cash Provided By (Used for) Total	(\$414,253)			(\$414,253)	

COMBINED STATEMENT OF CASH FLOWS
SCHEDULE OF NONCASH INVESTING, CAPITAL, AND FINANCING ACTIVITIES

Explanation of Transaction and Balance Sheet Effect	Amount
Total	

LEA : 104107903 Seneca Valley SD

Printed 11/21/2019 3:49:45 PM

Amounts Expressed in Whole Dollars

	<u>Private Purpose Trust</u> (71)	<u>Investment Trust</u> (72)	<u>Pension Trust</u> (73)	<u>Activity</u> (81)
Assets And Deferred Outflows Of Resources				
Assets				
0100 Cash and Cash Equivalents	87,854			292,833
0110 Investments				
0130 Due From Other Funds				
0147 Due from Component Unit				
0150 Other Receivables				
0170 Inventories				
0180 Prepaid Expenses (Expenditures)				
0190 Other Current Assets				
0220 Buildings and Building Improvements (Net)				
0230 Machinery, Equipment and Furniture (Net)				
Total Assets	\$87,854			\$292,833
0910 Deferred Outflows of Resources				
Total Assets And Deferred Outflows Of Resources	\$87,854			\$292,833

LEA : 104107903 Seneca Valley SD

Printed 11/21/2019 3:49:45 PM

Amounts Expressed in Whole Dollars

	<u>Other Agency</u> <u>(89)</u>	<u>Discrete Component Units</u> <u>(98)</u>	<u>Discrete Component Units</u> <u>(99)</u>	<u>Total Fiduciary Funds</u>
Assets And Deferred Outflows Of Resources				
Assets				
0100 Cash and Cash Equivalents				380,687
0110 Investments				
0130 Due From Other Funds				
0147 Due from Component Unit				
0150 Other Receivables				
0170 Inventories				
0180 Prepaid Expenses (Expenditures)				
0190 Other Current Assets				
0220 Buildings and Building Improvements (Net)				
0230 Machinery, Equipment and Furniture (Net)				
Total Assets				\$380,687
0910 Deferred Outflows of Resources				
Total Assets And Deferred Outflows Of Resources				\$380,687

LEA : 104107903 Seneca Valley SD

Printed 11/21/2019 3:49:45 PM

Amounts Expressed in Whole Dollars

Private Purpose Trust
(71)

Investment Trust
(72)

Pension Trust
(73)

Activity
(81)

Liabilities, Deferred Inflows Of Resources And Net Position

Liabilities

0400 Due to Other Funds				
0411 Due to Other Governments				
0412 Due to Primary Government				
0413 Due to Component Unit				
0420 Accounts Payable				
0430 Contracts Payable				
0450 Short-Term Payables				
0461 Accrued Salaries and Benefits				
0462 Payroll Deductions and Withholding				
0480 Unearned Revenues				
0490 Other Current Liabilities				292,833

Total Liabilities **\$292,833**

0950 Deferred Inflows of Resources

Net Position

0791 Net Investment in Capital Assets				
0009 Restricted Net Position (0792 – 0798)	87,854			
0799 Unrestricted Net Position				

Total Net Position **\$87,854**

Total Liabilities, Deferred Inflows Of Resources And Net Position **\$87,854** **\$292,833**

LEA : 104107903 Seneca Valley SD

Printed 11/21/2019 3:49:45 PM

Amounts Expressed in Whole Dollars	<u>Other Agency</u> (89)	<u>Discrete Component Units</u> (98)	<u>Discrete Component Units</u> (99)	<u>Total Fiduciary Funds</u>
Liabilities, Deferred Inflows Of Resources And Net Position				
Liabilities				
0400 Due to Other Funds				
0411 Due to Other Governments				
0412 Due to Primary Government				
0413 Due to Component Unit				
0420 Accounts Payable				
0430 Contracts Payable				
0450 Short-Term Payables				
0461 Accrued Salaries and Benefits				
0462 Payroll Deductions and Withholding				
0480 Unearned Revenues				
0490 Other Current Liabilities				292,833
Total Liabilities				\$292,833
0950 Deferred Inflows of Resources				
Net Position				
0791 Net Investment in Capital Assets				
0009 Restricted Net Position (0792 – 0798)				87,854
0799 Unrestricted Net Position				
Total Net Position				\$87,854
Total Liabilities, Deferred Inflows Of Resources And Net Position				\$380,687

Amounts Expressed in Whole Dollars	<u>Private Purpose Trust</u> <u>(71)</u>	<u>Investment Trust</u> <u>(72)</u>	<u>Pension Trust</u> <u>(73)</u>	<u>Discrete Component</u> <u>Units</u> <u>(98)</u>	<u>Discrete Component</u> <u>Units</u> <u>(99)</u>	<u>Total Fiduciary</u> <u>Funds</u>
Additions						
0091 Gifts and Contributions	250					250
0092 Other Additions	1					1
Deductions						
0093 Scholarships Awarded	100					100
0094 Other Deductions	6,018					6,018
Change In Net Position	(\$5,867)					(\$5,867)
0006 Net Position – Beginning of Fiscal Year	93,721					93,721
0007 Net Position Held in Trust for Pension Benefits						
Net Position - End of Fiscal Year	\$87,854					\$87,854

	<u>Revenue Reported In Current Year</u>	<u>Current Year Tax Accrual</u>	<u>Prior Year Tax Accrual</u>	<u>Taxes Collected In Current Year</u>
<u>Revenue from Local Sources</u>				
6111 Current Real Estate Taxes	73,525,726.94			73,525,726.94
6112 Interim Real Estate Taxes	1,243,320.39			1,243,320.39
6113 Public Utility Realty Taxes	84,958.43			84,958.43
6114 Payments in Lieu of Current Taxes - State / Local	313,276.00			313,276.00
6149 Current Act 511 Taxes, Other Flat Rate Assessments	201,566.29			201,566.29
6151 Current Act 511 Earned Income Taxes	10,845,943.39			10,845,943.39
6153 Current Act 511 Real Estate Transfer Taxes	2,790,162.98			2,790,162.98
6411 Delinquent Real Estate Taxes	998,042.60			998,042.60
6431 Delinquent Act 1 Earned Income Taxes	151,630.27			151,630.27
6440 Delinquent Local Enabling Taxes - Flat Rate Assessments	42,084.17			42,084.17
6500 Earnings on Investments	1,155,339.09			
6700 Revenues from LEA Activities	510,185.63			
6831 Federal Revenue Received from Other Pennsylvania Public LEAs	7,601.04			
6832 Federal IDEA Revenue Received as Pass Through	1,248,268.00			
6910 Rentals	103,978.77			
6941 Regular Day School Tuition	12,781.91			
6942 Summer School Tuition	107,640.58			
6944 Receipts from Other LEAs in Pennsylvania - Education	2,047,428.53			
6991 Refunds of a Prior Year Expenditure	664,091.63			
6999 Other Revenues Not Specified Above	176,765.56			
TOTAL Revenue from Local Sources	\$96,230,792.20			\$90,196,711.46

**Revenue Reported
In Current Year**

Revenue from State Sources

7110 Basic Education Funding	14,031,291.66		
7160 Tuition for Orphans Subsidy	52,228.03		
7271 Special Education funds for School-Aged Pupils	3,667,071.20		
7311 Pupil Transportation Subsidy	2,811,033.35		
7312 Nonpublic and Charter School Pupil Transportation Subsidy	321,860.00		
7320 Rental and Sinking Fund Payments / Building Reimbursement Subsidy	898,454.41		
7330 Health Services (Medical, Dental, Nurse, Act 25)	155,491.83		
7340 State Property Tax Reduction Allocation	1,246,238.92		
7361 School Safety and Security Grants	25,000.00		
7505 Ready to Learn Block Grant	684,267.00		
7810 State Share of Social Security and Medicare Taxes	2,085,022.12		
7820 State Share of Retirement Contributions	9,271,167.12		
TOTAL Revenue from State Sources	\$35,249,125.64		

**Revenue Reported
In Current Year**

Revenue from Federal Sources

8190 Other Unrestricted Federal Grants-in-Aid Direct from the Federal Government	62,846.69		
8514 NCLB, Title I - Improving the Academic Achievement of the Disadvantaged	412,113.48		
8515 NCLB, Title II - Preparing, Training and Recruiting High Quality Teachers and Principals	108,557.00		
8517 NCLB, Title IV - 21St Century Schools	34,460.00		
8810 School-Based Access Medicaid Reimbursement Program (SBAP) Reimbursements (Access)	371,524.44		
8820 Medical Assistance Reimbursement for Administrative Claiming (Quarterly) Program	5,191.26		
TOTAL Revenue from Federal Sources	\$994,692.87		
TOTAL FROM ALL SOURCES	\$132,474,610.71		\$90,196,711.46

Revenue from Local Sources	96,230,792.20
Revenue from State Sources	35,249,125.64
Revenue from Federal Sources	994,692.87
Other Financing Sources	
TOTAL FROM ALL SOURCES	\$132,474,610.71

LEA : 104107903 Seneca Valley SD

Printed 11/21/2019 3:49:58 PM

General Fund (10)

	<u>Total</u>
1000 Instruction	
100 Personnel Services – Salaries	
100 Personnel Services – Salaries	43,797,520.12
Total Personnel Services – Salaries	\$43,797,520.12
200 Personnel Services – Employee Benefits	
210 Group Insurance – Contracted Provider	9,861,869.00
220 Social Security Contributions	3,368,292.88
230 PSERS Retirement Contributions	14,640,352.71
250 Unemployment Compensation	35,207.42
260 Workers' Compensation	163,159.38
Total Personnel Services – Employee Benefits	\$28,068,881.39
300 Purchased Professional and Technical Services	
322 Professional Educational Services – Ius	611,149.41
329 Professional Educational Services – Other	548,436.90
330 Other Professional Services	260,670.35
Total Purchased Professional and Technical Services	\$1,420,256.66
400 Purchased Property Services	
430 Repairs and Maintenance Services	51,243.65
440 Rentals	371,579.28
Total Purchased Property Services	\$422,822.93
500 Other Purchased Services	
510 Student Transportation Services	22,304.66
561 Tuition To Other School Districts Within the State	34,757.98
562 Tuition To Pennsylvania Charter Schools	1,235,731.55
563 Tuition To Nonpublic Schools	1,472,969.54
564 Tuition To Career and Technology Centers	559,387.25
567 Tuition To Approved Private Schools (APS) and PA Chartered Schools for the Deaf and Blind	1,321,875.32
568 Tuition To Private Residential Rehabilitative Institutions (PRRI) [In-State] and Detention Centers	4,217.50
580 Travel	14,779.51
Total Other Purchased Services	\$4,666,023.31
600 Supplies	
610 General Supplies	754,926.10
620 Energy	1,637.08
640 Books and Periodicals	992,613.63
650 Supplies & Fees – Technology Related	4,607.20
Total Supplies	\$1,753,784.01
700 Property	
762 Capitalized Equipment - Replacement	55,999.00
Total Property	\$55,999.00
800 Other Objects	
810 Dues and Fees	5,035.00
Total Other Objects	\$5,035.00
Total 1000 Instruction	\$80,190,322.42

General Fund (10)

1100 Regular Programs – Elementary / Secondary

	<u>Elementary</u>	<u>Secondary</u>	<u>Federal</u>	<u>Total</u>
100 Personnel Services – Salaries				
100 Personnel Services – Salaries	15,387,756.39	15,860,618.79	430,891.00	31,679,266.18
Total Personnel Services – Salaries	\$15,387,756.39	\$15,860,618.79	\$430,891.00	\$31,679,266.18
200 Personnel Services – Employee Benefits				
210 Group Insurance – Contracted Provider	3,678,416.95	3,525,448.84	53,427.42	7,257,293.21
220 Social Security Contributions	1,210,223.44	1,222,349.79	13,281.33	2,445,854.56
230 PSERS Retirement Contributions	5,276,358.79	5,320,864.42	24,562.27	10,621,785.48
250 Unemployment Compensation	18,450.28	14,094.46	21.80	32,566.54
260 Workers' Compensation	47,973.59	65,285.26	306.18	113,565.03
Total Personnel Services – Employee Benefits	\$10,231,423.05	\$10,148,042.77	\$91,599.00	\$20,471,064.82
300 Purchased Professional and Technical Services				
322 Professional Educational Services – lus	469,699.77		1,498.00	471,197.77
329 Professional Educational Services – Other		112,193.58		112,193.58
330 Other Professional Services	28,935.00	15,663.00		44,598.00
Total Purchased Professional and Technical Services	\$498,634.77	\$127,856.58	\$1,498.00	\$627,989.35
400 Purchased Property Services				
430 Repairs and Maintenance Services	17,499.62	32,977.41		50,477.03
440 Rentals	170,897.52	200,681.76		371,579.28
Total Purchased Property Services	\$188,397.14	\$233,659.17		\$422,056.31
500 Other Purchased Services				
510 Student Transportation Services	8,487.92	423.92	6,028.86	14,940.70
562 Tuition To Pennsylvania Charter Schools	249,892.61	742,097.88		991,990.49
580 Travel	5,849.82	999.20		6,849.02
Total Other Purchased Services	\$264,230.35	\$743,521.00	\$6,028.86	\$1,013,780.21
600 Supplies				
610 General Supplies	321,673.30	332,353.12	72.19	654,098.61
640 Books and Periodicals	613,286.73	344,644.39		957,931.12
650 Supplies & Fees – Technology Related		2,479.90		2,479.90
Total Supplies	\$934,960.03	\$679,477.41	\$72.19	\$1,614,509.63
Total 1100 Regular Programs – Elementary / Secondary	\$27,505,401.73	\$27,793,175.72	\$530,089.05	\$55,828,666.50

General Fund (10)

1110 Regular Programs

	<u>Elementary</u>	<u>Secondary</u>	<u>Federal</u>	<u>Total</u>
100 Personnel Services – Salaries				
100 Personnel Services – Salaries	15,387,756.39	15,860,618.79		31,248,375.18
Total Personnel Services – Salaries	\$15,387,756.39	\$15,860,618.79		\$31,248,375.18
200 Personnel Services – Employee Benefits				
210 Group Insurance – Contracted Provider	3,678,416.95	3,525,448.84		7,203,865.79
220 Social Security Contributions	1,210,223.44	1,222,349.79		2,432,573.23
230 PSERS Retirement Contributions	5,276,358.79	5,320,864.42		10,597,223.21
250 Unemployment Compensation	18,450.28	14,094.46		32,544.74
260 Workers' Compensation	47,973.59	65,285.26		113,258.85
Total Personnel Services – Employee Benefits	\$10,231,423.05	\$10,148,042.77		\$20,379,465.82
300 Purchased Professional and Technical Services				
322 Professional Educational Services – lus	469,699.77			469,699.77
329 Professional Educational Services – Other		112,193.58		112,193.58
330 Other Professional Services	28,935.00	15,663.00		44,598.00
Total Purchased Professional and Technical Services	\$498,634.77	\$127,856.58		\$626,491.35
400 Purchased Property Services				
430 Repairs and Maintenance Services	17,499.62	32,977.41		50,477.03
440 Rentals	170,897.52	200,681.76		371,579.28
Total Purchased Property Services	\$188,397.14	\$233,659.17		\$422,056.31
500 Other Purchased Services				
510 Student Transportation Services	8,487.92	423.92		8,911.84
562 Tuition To Pennsylvania Charter Schools	249,892.61	742,097.88		991,990.49
580 Travel	5,849.82	999.20		6,849.02
Total Other Purchased Services	\$264,230.35	\$743,521.00		\$1,007,751.35
600 Supplies				
610 General Supplies	321,673.30	332,353.12		654,026.42
640 Books and Periodicals	613,286.73	344,644.39		957,931.12
650 Supplies & Fees – Technology Related		2,479.90		2,479.90
Total Supplies	\$934,960.03	\$679,477.41		\$1,614,437.44
Total 1110 Regular Programs	\$27,505,401.73	\$27,793,175.72		\$55,298,577.45

General Fund (10)

	<u>Elementary</u>	<u>Secondary</u>	<u>Federal</u>	<u>Total</u>
1190 Federally-Funded Regular Programs				
100 Personnel Services – Salaries				
100 Personnel Services – Salaries			430,891.00	430,891.00
Total Personnel Services – Salaries			\$430,891.00	\$430,891.00
200 Personnel Services – Employee Benefits				
210 Group Insurance – Contracted Provider			53,427.42	53,427.42
220 Social Security Contributions			13,281.33	13,281.33
230 PSERS Retirement Contributions			24,562.27	24,562.27
250 Unemployment Compensation			21.80	21.80
260 Workers' Compensation			306.18	306.18
Total Personnel Services – Employee Benefits			\$91,599.00	\$91,599.00
300 Purchased Professional and Technical Services				
322 Professional Educational Services – lus			1,498.00	1,498.00
Total Purchased Professional and Technical Services			\$1,498.00	\$1,498.00
500 Other Purchased Services				
510 Student Transportation Services			6,028.86	6,028.86
Total Other Purchased Services			\$6,028.86	\$6,028.86
600 Supplies				
610 General Supplies			72.19	72.19
Total Supplies			\$72.19	\$72.19
Total 1190 Federally-Funded Regular Programs			\$530,089.05	\$530,089.05

General Fund (10)

1200 Special Programs – Elementary / Secondary

	<u>Elementary</u>	<u>Secondary</u>	<u>Federal</u>	<u>Total</u>
100 Personnel Services – Salaries				
100 Personnel Services – Salaries	5,033,017.80	4,623,634.29	591,677.65	10,248,329.74
Total Personnel Services – Salaries	\$5,033,017.80	\$4,623,634.29	\$591,677.65	\$10,248,329.74
200 Personnel Services – Employee Benefits				
210 Group Insurance – Contracted Provider	915,808.80	1,043,568.81	131,925.27	2,091,302.88
220 Social Security Contributions	375,634.81	349,427.52	52,294.88	777,357.21
230 PSERS Retirement Contributions	1,720,793.14	1,539,640.21	130,133.83	3,390,567.18
250 Unemployment Compensation	1,282.05	983.04	117.95	2,383.04
260 Workers' Compensation	22,917.03	18,374.94	1,781.41	43,073.38
Total Personnel Services – Employee Benefits	\$3,036,435.83	\$2,951,994.52	\$316,253.34	\$6,304,683.69
300 Purchased Professional and Technical Services				
322 Professional Educational Services – lus	39,464.00	600.00	79,329.60	119,393.60
329 Professional Educational Services – Other	301,379.74	61,332.77	58,567.81	421,280.32
330 Other Professional Services	76,446.78	120,515.57	4,800.00	201,762.35
Total Purchased Professional and Technical Services	\$417,290.52	\$182,448.34	\$142,697.41	\$742,436.27
500 Other Purchased Services				
510 Student Transportation Services	1,751.23	5,612.73		7,363.96
561 Tuition To Other School Districts Within the State		31,844.83		31,844.83
562 Tuition To Pennsylvania Charter Schools	(32,196.78)	80,835.40	195,102.44	243,741.06
563 Tuition To Nonpublic Schools	191,614.56	1,264,974.05		1,456,588.61
567 Tuition To Approved Private Schools (APS) and PA Chartered Schools for the Deaf and Blind	432,553.63	437,225.95	452,095.74	1,321,875.32
580 Travel	3,718.65	4,211.84		7,930.49
Total Other Purchased Services	\$597,441.29	\$1,824,704.80	\$647,198.18	\$3,069,344.27
600 Supplies				
610 General Supplies	23,105.19	18,259.62	2,080.00	43,444.81
620 Energy		1,637.08		1,637.08
640 Books and Periodicals	17,917.51	16,765.00		34,682.51
650 Supplies & Fees – Technology Related		2,127.30		2,127.30
Total Supplies	\$41,022.70	\$38,789.00	\$2,080.00	\$81,891.70
800 Other Objects				
810 Dues and Fees	2,625.00	2,410.00		5,035.00
Total Other Objects	\$2,625.00	\$2,410.00		\$5,035.00
Total 1200 Special Programs – Elementary / Secondary	\$9,127,833.14	\$9,623,980.95	\$1,699,906.58	\$20,451,720.67

General Fund (10)

1210 Life Skills Support

	<u>Elementary</u>	<u>Secondary</u>	<u>Federal</u>	<u>Total</u>
100 Personnel Services – Salaries				
100 Personnel Services – Salaries	67,321.16	101,113.19		168,434.35
Total Personnel Services – Salaries	\$67,321.16	\$101,113.19		\$168,434.35
200 Personnel Services – Employee Benefits				
210 Group Insurance – Contracted Provider	22,026.28	13,682.86		35,709.14
220 Social Security Contributions	5,214.03	7,719.14		12,933.17
230 PSERS Retirement Contributions	22,802.14	33,802.13		56,604.27
250 Unemployment Compensation	19.81	21.91		41.72
260 Workers' Compensation	95.88			95.88
Total Personnel Services – Employee Benefits	\$50,158.14	\$55,226.04		\$105,384.18
300 Purchased Professional and Technical Services				
322 Professional Educational Services – lus		100.00		100.00
Total Purchased Professional and Technical Services		\$100.00		\$100.00
500 Other Purchased Services				
561 Tuition To Other School Districts Within the State		2,235.53		2,235.53
563 Tuition To Nonpublic Schools		171,238.14		171,238.14
Total Other Purchased Services		\$173,473.67		\$173,473.67
600 Supplies				
610 General Supplies	159.72	6,236.67		6,396.39
620 Energy		1,637.08		1,637.08
Total Supplies	\$159.72	\$7,873.75		\$8,033.47
Total 1210 Life Skills Support	\$117,639.02	\$337,786.65		\$455,425.67

General Fund (10)

	<u>Elementary</u>	<u>Secondary</u>	<u>Federal</u>	<u>Total</u>
1220 Sensory Support				
100 Personnel Services – Salaries				
100 Personnel Services – Salaries	871,680.68	203,944.86		1,075,625.54
Total Personnel Services – Salaries	\$871,680.68	\$203,944.86		\$1,075,625.54
200 Personnel Services – Employee Benefits				
210 Group Insurance – Contracted Provider	206,182.98	44,629.32		250,812.30
220 Social Security Contributions	66,510.76	15,582.76		82,093.52
230 PSERS Retirement Contributions	290,177.89	65,951.67		356,129.56
250 Unemployment Compensation	122.37	35.44		157.81
260 Workers' Compensation	3,905.07	500.56		4,405.63
Total Personnel Services – Employee Benefits	\$566,899.07	\$126,699.75		\$693,598.82
300 Purchased Professional and Technical Services				
322 Professional Educational Services – lus			72,490.55	72,490.55
329 Professional Educational Services – Other	51,775.60	26,037.98	7,796.27	85,609.85
330 Other Professional Services	887.18			887.18
Total Purchased Professional and Technical Services	\$52,662.78	\$26,037.98	\$80,286.82	\$158,987.58
500 Other Purchased Services				
580 Travel	221.57			221.57
Total Other Purchased Services	\$221.57			\$221.57
600 Supplies				
610 General Supplies	3,596.51	15.99		3,612.50
Total Supplies	\$3,596.51	\$15.99		\$3,612.50
800 Other Objects				
810 Dues and Fees	2,025.00	450.00		2,475.00
Total Other Objects	\$2,025.00	\$450.00		\$2,475.00
Total 1220 Sensory Support	\$1,497,085.61	\$357,148.58	\$80,286.82	\$1,934,521.01

General Fund (10)

1230 Emotional Support

	<u>Elementary</u>	<u>Secondary</u>	<u>Federal</u>	<u>Total</u>
100 Personnel Services – Salaries				
100 Personnel Services – Salaries	485,677.01	275,362.52	434,089.48	1,195,129.01
Total Personnel Services – Salaries	\$485,677.01	\$275,362.52	\$434,089.48	\$1,195,129.01
200 Personnel Services – Employee Benefits				
210 Group Insurance – Contracted Provider	123,745.73	59,575.96	107,341.56	290,663.25
220 Social Security Contributions	35,403.16	21,003.24	34,368.52	90,774.92
230 PSERS Retirement Contributions	249,706.51	92,053.78	51,988.64	393,748.93
250 Unemployment Compensation	112.09	39.23	64.86	216.18
260 Workers' Compensation	574.83	678.37	1,066.63	2,319.83
Total Personnel Services – Employee Benefits	\$409,542.32	\$173,350.58	\$194,830.21	\$777,723.11
300 Purchased Professional and Technical Services				
322 Professional Educational Services – lus	1,570.00		2,146.05	3,716.05
330 Other Professional Services		114.00		114.00
Total Purchased Professional and Technical Services	\$1,570.00	\$114.00	\$2,146.05	\$3,830.05
500 Other Purchased Services				
561 Tuition To Other School Districts Within the State		115.50		115.50
563 Tuition To Nonpublic Schools	191,614.56	1,049,295.66		1,240,910.22
567 Tuition To Approved Private Schools (APS) and PA Chartered Schools for the Deaf and Blind			452,095.74	452,095.74
580 Travel	442.78	1,112.90		1,555.68
Total Other Purchased Services	\$192,057.34	\$1,050,524.06	\$452,095.74	\$1,694,677.14
600 Supplies				
610 General Supplies		584.14		584.14
Total Supplies		\$584.14		\$584.14
Total 1230 Emotional Support	\$1,088,846.67	\$1,499,935.30	\$1,083,161.48	\$3,671,943.45

General Fund (10)

1240 Academic Support

	<u>Elementary</u>	<u>Secondary</u>	<u>Federal</u>	<u>Total</u>
100 Personnel Services – Salaries				
100 Personnel Services – Salaries	3,608,338.95	3,904,372.09	64,095.50	7,576,806.54
Total Personnel Services – Salaries	\$3,608,338.95	\$3,904,372.09	\$64,095.50	\$7,576,806.54
200 Personnel Services – Employee Benefits				
210 Group Insurance – Contracted Provider	563,853.81	913,627.32	2,551.35	1,480,032.48
220 Social Security Contributions	268,506.86	294,671.21	10,818.44	573,996.51
230 PSERS Retirement Contributions	1,158,106.60	1,301,665.97	46,890.53	2,506,663.10
250 Unemployment Compensation	1,027.78	839.30	43.08	1,910.16
260 Workers' Compensation	18,341.25	16,544.77	266.80	35,152.82
Total Personnel Services – Employee Benefits	\$2,009,836.30	\$2,527,348.57	\$60,570.20	\$4,597,755.07
300 Purchased Professional and Technical Services				
322 Professional Educational Services – lus	350.00	500.00		850.00
329 Professional Educational Services – Other			6,836.62	6,836.62
330 Other Professional Services	75,559.60	120,401.57		195,961.17
Total Purchased Professional and Technical Services	\$75,909.60	\$120,901.57	\$6,836.62	\$203,647.79
500 Other Purchased Services				
510 Student Transportation Services	1,751.23	4,307.88		6,059.11
561 Tuition To Other School Districts Within the State		29,493.80		29,493.80
562 Tuition To Pennsylvania Charter Schools	(32,196.78)	80,835.40	195,102.44	243,741.06
563 Tuition To Nonpublic Schools		44,440.25		44,440.25
580 Travel	3,054.30	3,098.94		6,153.24
Total Other Purchased Services	(\$27,391.25)	\$162,176.27	\$195,102.44	\$329,887.46
600 Supplies				
610 General Supplies	19,348.96	11,422.82	2,080.00	32,851.78
640 Books and Periodicals	17,917.51	16,765.00		34,682.51
650 Supplies & Fees – Technology Related		2,127.30		2,127.30
Total Supplies	\$37,266.47	\$30,315.12	\$2,080.00	\$69,661.59
800 Other Objects				
810 Dues and Fees	600.00	1,960.00		2,560.00
Total Other Objects	\$600.00	\$1,960.00		\$2,560.00
Total 1240 Academic Support	\$5,704,560.07	\$6,747,073.62	\$328,684.76	\$12,780,318.45

General Fund (10)

	<u>Elementary</u>	<u>Secondary</u>	<u>Federal</u>	<u>Total</u>
1241 Learning Support – Public				
100 Personnel Services – Salaries				
100 Personnel Services – Salaries	2,959,815.58	3,353,496.34	64,095.50	6,377,407.42
Total Personnel Services – Salaries	\$2,959,815.58	\$3,353,496.34	\$64,095.50	\$6,377,407.42
200 Personnel Services – Employee Benefits				
210 Group Insurance – Contracted Provider	462,108.34	783,961.59	2,551.35	1,248,621.28
220 Social Security Contributions	219,437.87	253,359.05	10,818.44	483,615.36
230 PSERS Retirement Contributions	945,398.36	1,120,509.32	46,890.53	2,112,798.21
250 Unemployment Compensation	945.38	775.50	43.08	1,763.96
260 Workers' Compensation	15,933.77	14,104.86	266.80	30,305.43
Total Personnel Services – Employee Benefits	\$1,643,823.72	\$2,172,710.32	\$60,570.20	\$3,877,104.24
300 Purchased Professional and Technical Services				
322 Professional Educational Services – lus	350.00	500.00		850.00
329 Professional Educational Services – Other			6,836.62	6,836.62
330 Other Professional Services	75,559.60	120,401.57		195,961.17
Total Purchased Professional and Technical Services	\$75,909.60	\$120,901.57	\$6,836.62	\$203,647.79
500 Other Purchased Services				
510 Student Transportation Services	1,496.23	459.26		1,955.49
561 Tuition To Other School Districts Within the State		29,493.80		29,493.80
562 Tuition To Pennsylvania Charter Schools	(32,196.78)	80,835.40	195,102.44	243,741.06
563 Tuition To Nonpublic Schools		44,440.25		44,440.25
580 Travel	2,612.40	2,686.65		5,299.05
Total Other Purchased Services	(\$28,088.15)	\$157,915.36	\$195,102.44	\$324,929.65
600 Supplies				
610 General Supplies	13,231.21	9,377.97	2,080.00	24,689.18
640 Books and Periodicals	17,598.59	16,073.50		33,672.09
650 Supplies & Fees – Technology Related		2,127.30		2,127.30
Total Supplies	\$30,829.80	\$27,578.77	\$2,080.00	\$60,488.57
Total 1241 Learning Support – Public	\$4,682,290.55	\$5,832,602.36	\$328,684.76	\$10,843,577.67

General Fund (10)

1243 Gifted Support

	<u>Elementary</u>	<u>Secondary</u>	<u>Federal</u>	<u>Total</u>
100 Personnel Services – Salaries				
100 Personnel Services – Salaries	648,523.37	550,875.75		1,199,399.12
Total Personnel Services – Salaries	\$648,523.37	\$550,875.75		\$1,199,399.12
200 Personnel Services – Employee Benefits				
210 Group Insurance – Contracted Provider	101,745.47	129,665.73		231,411.20
220 Social Security Contributions	49,068.99	41,312.16		90,381.15
230 PSERS Retirement Contributions	212,708.24	181,156.65		393,864.89
250 Unemployment Compensation	82.40	63.80		146.20
260 Workers' Compensation	2,407.48	2,439.91		4,847.39
Total Personnel Services – Employee Benefits	\$366,012.58	\$354,638.25		\$720,650.83
500 Other Purchased Services				
510 Student Transportation Services	255.00	3,848.62		4,103.62
580 Travel	441.90	412.29		854.19
Total Other Purchased Services	\$696.90	\$4,260.91		\$4,957.81
600 Supplies				
610 General Supplies	6,117.75	2,044.85		8,162.60
640 Books and Periodicals	318.92	691.50		1,010.42
Total Supplies	\$6,436.67	\$2,736.35		\$9,173.02
800 Other Objects				
810 Dues and Fees	600.00	1,960.00		2,560.00
Total Other Objects	\$600.00	\$1,960.00		\$2,560.00
Total 1243 Gifted Support	\$1,022,269.52	\$914,471.26		\$1,936,740.78

General Fund (10)

1270 Multi-Handicapped Support

300 Purchased Professional and Technical Services

329 Professional Educational Services – Other

Total Purchased Professional and Technical Services

Total 1270 Multi-Handicapped Support

Elementary

Secondary

Federal

Total

20,975.00

20,975.00

\$20,975.00

\$20,975.00

\$20,975.00

\$20,975.00

General Fund (10)

1280 Early Intervention Support

300 Purchased Professional and Technical Services

322 Professional Educational Services – lus

Total Purchased Professional and Technical Services

Total 1280 Early Intervention Support

	<u>Elementary</u>	<u>Secondary</u>	<u>Federal</u>	<u>Total</u>
	37,544.00		4,693.00	42,237.00
	\$37,544.00		\$4,693.00	\$42,237.00
	\$37,544.00		\$4,693.00	\$42,237.00

General Fund (10)

	<u>Elementary</u>	<u>Secondary</u>	<u>Federal</u>	<u>Total</u>
1290 Special Programs - Other Support				
100 Personnel Services – Salaries				
100 Personnel Services – Salaries		138,841.63	93,492.67	232,334.30
Total Personnel Services – Salaries		\$138,841.63	\$93,492.67	\$232,334.30
200 Personnel Services – Employee Benefits				
210 Group Insurance – Contracted Provider		12,053.35	22,032.36	34,085.71
220 Social Security Contributions		10,451.17	7,107.92	17,559.09
230 PSERS Retirement Contributions		46,166.66	31,254.66	77,421.32
250 Unemployment Compensation		47.16	10.01	57.17
260 Workers' Compensation		651.24	447.98	1,099.22
Total Personnel Services – Employee Benefits		\$69,369.58	\$60,852.93	\$130,222.51
300 Purchased Professional and Technical Services				
329 Professional Educational Services – Other	249,604.14	35,294.79	22,959.92	307,858.85
330 Other Professional Services			4,800.00	4,800.00
Total Purchased Professional and Technical Services	\$249,604.14	\$35,294.79	\$27,759.92	\$312,658.85
500 Other Purchased Services				
510 Student Transportation Services		1,304.85		1,304.85
567 Tuition To Approved Private Schools (APS) and PA Chartered Schools for the Deaf and Blind	432,553.63	437,225.95		869,779.58
Total Other Purchased Services	\$432,553.63	\$438,530.80		\$871,084.43
Total 1290 Special Programs - Other Support	\$682,157.77	\$682,036.80	\$182,105.52	\$1,546,300.09

General Fund (10)

1300 Vocational Education

	<u>Elementary</u>	<u>Secondary</u>	<u>Federal</u>	<u>Total</u>
100 Personnel Services – Salaries				
100 Personnel Services – Salaries		1,692,401.59		1,692,401.59
Total Personnel Services – Salaries		\$1,692,401.59		\$1,692,401.59
200 Personnel Services – Employee Benefits				
210 Group Insurance – Contracted Provider		495,391.47		495,391.47
220 Social Security Contributions		131,503.64		131,503.64
230 PSERS Retirement Contributions		569,298.48		569,298.48
250 Unemployment Compensation		236.99		236.99
260 Workers' Compensation		5,994.42		5,994.42
Total Personnel Services – Employee Benefits		\$1,202,425.00		\$1,202,425.00
300 Purchased Professional and Technical Services				
330 Other Professional Services		14,310.00		14,310.00
Total Purchased Professional and Technical Services		\$14,310.00		\$14,310.00
400 Purchased Property Services				
430 Repairs and Maintenance Services		766.62		766.62
Total Purchased Property Services		\$766.62		\$766.62
500 Other Purchased Services				
564 Tuition To Career and Technology Centers		559,387.25		559,387.25
Total Other Purchased Services		\$559,387.25		\$559,387.25
600 Supplies				
610 General Supplies		57,382.68		57,382.68
Total Supplies		\$57,382.68		\$57,382.68
700 Property				
762 Capitalized Equipment - Replacement		55,999.00		55,999.00
Total Property		\$55,999.00		\$55,999.00
Total 1300 Vocational Education		\$3,582,672.14		\$3,582,672.14

General Fund (10)

	<u>Elementary</u>	<u>Secondary</u>	<u>Federal</u>	<u>Total</u>
1400 Other Instructional Programs – Elementary / Secondary				
100 Personnel Services – Salaries				
100 Personnel Services – Salaries	5,028.27	172,494.34		177,522.61
Total Personnel Services – Salaries	\$5,028.27	\$172,494.34		\$177,522.61
200 Personnel Services – Employee Benefits				
210 Group Insurance – Contracted Provider		17,881.44		17,881.44
220 Social Security Contributions	384.03	13,193.44		13,577.47
230 PSERS Retirement Contributions	1,680.95	57,020.62		58,701.57
250 Unemployment Compensation	0.17	20.68		20.85
260 Workers' Compensation	6.07	520.48		526.55
Total Personnel Services – Employee Benefits	\$2,071.22	\$88,636.66		\$90,707.88
300 Purchased Professional and Technical Services				
322 Professional Educational Services – lus		3,878.04		3,878.04
Total Purchased Professional and Technical Services		\$3,878.04		\$3,878.04
500 Other Purchased Services				
561 Tuition To Other School Districts Within the State		2,913.15		2,913.15
563 Tuition To Nonpublic Schools		16,380.93		16,380.93
568 Tuition To Private Residential Rehabilitative Institutions (PRRI) [In-State] and Detention Centers		4,217.50		4,217.50
Total Other Purchased Services		\$23,511.58		\$23,511.58
Total 1400 Other Instructional Programs – Elementary / Secondary	\$7,099.49	\$288,520.62		\$295,620.11

General Fund (10)

1420 Summer School

100 Personnel Services – Salaries

	<u>Elementary</u>	<u>Secondary</u>	<u>Federal</u>	<u>Total</u>
100 Personnel Services – Salaries		66,397.80		66,397.80
Total Personnel Services – Salaries		\$66,397.80		\$66,397.80

200 Personnel Services – Employee Benefits

220 Social Security Contributions		5,078.64		5,078.64
230 PSERS Retirement Contributions		22,196.77		22,196.77
250 Unemployment Compensation		1.94		1.94
260 Workers' Compensation		80.56		80.56

Total Personnel Services – Employee Benefits		\$27,357.91		\$27,357.91
---	--	--------------------	--	--------------------

Total 1420 Summer School		\$93,755.71		\$93,755.71
---------------------------------	--	--------------------	--	--------------------

General Fund (10)

1430 Homebound Instruction

100 Personnel Services – Salaries

100 Personnel Services – Salaries

Total Personnel Services – Salaries

200 Personnel Services – Employee Benefits

220 Social Security Contributions

230 PSERS Retirement Contributions

250 Unemployment Compensation

260 Workers' Compensation

Total Personnel Services – Employee Benefits

Total 1430 Homebound Instruction

	<u>Elementary</u>	<u>Secondary</u>	<u>Federal</u>	<u>Total</u>
100 Personnel Services – Salaries	5,028.27	22,433.54		27,461.81
Total Personnel Services – Salaries	\$5,028.27	\$22,433.54		\$27,461.81
200 Personnel Services – Employee Benefits				
220 Social Security Contributions	384.03	1,714.64		2,098.67
230 PSERS Retirement Contributions	1,680.95	6,855.40		8,536.35
250 Unemployment Compensation	0.17	8.73		8.90
260 Workers' Compensation	6.07	21.58		27.65
Total Personnel Services – Employee Benefits	\$2,071.22	\$8,600.35		\$10,671.57
Total 1430 Homebound Instruction	\$7,099.49	\$31,033.89		\$38,133.38

General Fund (10)

	<u>Elementary</u>	<u>Secondary</u>	<u>Federal</u>	<u>Total</u>
1440 Alternative Regular Education Programs				
100 Personnel Services – Salaries				
100 Personnel Services – Salaries		83,663.00		83,663.00
Total Personnel Services – Salaries		\$83,663.00		\$83,663.00
200 Personnel Services – Employee Benefits				
210 Group Insurance – Contracted Provider		17,881.44		17,881.44
220 Social Security Contributions		6,400.16		6,400.16
230 PSERS Retirement Contributions		27,968.45		27,968.45
250 Unemployment Compensation		10.01		10.01
260 Workers' Compensation		418.34		418.34
Total Personnel Services – Employee Benefits		\$52,678.40		\$52,678.40
300 Purchased Professional and Technical Services				
322 Professional Educational Services – lus		3,878.04		3,878.04
Total Purchased Professional and Technical Services		\$3,878.04		\$3,878.04
500 Other Purchased Services				
561 Tuition To Other School Districts Within the State		2,913.15		2,913.15
563 Tuition To Nonpublic Schools		16,380.93		16,380.93
568 Tuition To Private Residential Rehabilitative Institutions (PRRI) [In-State] and Detention Centers		4,217.50		4,217.50
Total Other Purchased Services		\$23,511.58		\$23,511.58
Total 1440 Alternative Regular Education Programs		\$163,731.02		\$163,731.02

General Fund (10)

1441 Adjudicated / Court-Placed Programs

Elementary

Secondary

Federal

Total

300 Purchased Professional and Technical Services

322 Professional Educational Services – Ius

3,878.04

3,878.04

Total Purchased Professional and Technical Services

\$3,878.04

\$3,878.04

500 Other Purchased Services

561 Tuition To Other School Districts Within the State

2,546.50

2,546.50

563 Tuition To Nonpublic Schools

6,930.93

6,930.93

568 Tuition To Private Residential Rehabilitative Institutions (PRRI) [In-State] and Detention Centers

4,217.50

4,217.50

Total Other Purchased Services

\$13,694.93

\$13,694.93

Total 1441 Adjudicated / Court-Placed Programs

\$17,572.97

\$17,572.97

General Fund (10)

1442 Alternative Education Programs

100 Personnel Services – Salaries

100 Personnel Services – Salaries

Total Personnel Services – Salaries

200 Personnel Services – Employee Benefits

210 Group Insurance – Contracted Provider

220 Social Security Contributions

230 PSERS Retirement Contributions

250 Unemployment Compensation

260 Workers' Compensation

Total Personnel Services – Employee Benefits

500 Other Purchased Services

561 Tuition To Other School Districts Within the State

563 Tuition To Nonpublic Schools

Total Other Purchased Services

Total 1442 Alternative Education Programs

	<u>Elementary</u>	<u>Secondary</u>	<u>Federal</u>	<u>Total</u>
		83,663.00		83,663.00
Total Personnel Services – Salaries		\$83,663.00		\$83,663.00
		17,881.44		17,881.44
		6,400.16		6,400.16
		27,968.45		27,968.45
		10.01		10.01
		418.34		418.34
Total Personnel Services – Employee Benefits		\$52,678.40		\$52,678.40
		366.65		366.65
		9,450.00		9,450.00
Total Other Purchased Services		\$9,816.65		\$9,816.65
Total 1442 Alternative Education Programs		\$146,158.05		\$146,158.05

General Fund (10)

1500 Nonpublic School Programs

300 Purchased Professional and Technical Services

322 Professional Educational Services – Ius

329 Professional Educational Services – Other

Total Purchased Professional and Technical Services

Total 1500 Nonpublic School Programs

Elementary

Secondary

Federal

Total

16,680.00

16,680.00

14,963.00

14,963.00

\$31,643.00

\$31,643.00

\$31,643.00

\$31,643.00

General Fund (10)

2000 Support Services

Total

100 Personnel Services – Salaries

100 Personnel Services – Salaries 11,263,335.22

Total Personnel Services – Salaries \$11,263,335.22

200 Personnel Services – Employee Benefits

210 Group Insurance – Contracted Provider 2,704,786.02

220 Social Security Contributions 833,833.81

230 PSERS Retirement Contributions 3,688,464.39

240 Tuition Reimbursement 218,327.10

250 Unemployment Compensation 1,743.82

260 Workers' Compensation 34,874.10

Total Personnel Services – Employee Benefits \$7,482,029.24

300 Purchased Professional and Technical Services

310 Official / Administrative Services 56,483.29

329 Professional Educational Services – Other 708,071.50

330 Other Professional Services 348,848.70

340 Technical Services 117,948.28

360 Employee Training and Development Services 105,118.46

390 Other Purchased Professional and Technical Services 12,903.45

Total Purchased Professional and Technical Services \$1,349,373.68

400 Purchased Property Services

410 Cleaning Services 2,010,223.24

420 Utility Services 918,865.83

430 Repairs and Maintenance Services 543,164.77

440 Rentals 35,783.19

490 Other Purchased Property Services 3,909.83

Total Purchased Property Services \$3,511,946.86

500 Other Purchased Services

510 Student Transportation Services 3,607.97

513 Contracted Carriers 8,245,706.78

516 Student Transportation Services From the IU 868.68

520 Insurance – General 54,033.25

521 Fire Insurance 170,970.00

522 Automotive Liability Insurance 9,332.50

523 General Property and Liability Insurance 10,170.00

530 Communications 155,413.62

549 Other Advertising/Public Relations 15,680.91

550 Printing and Binding 46,413.71

580 Travel 28,596.90

595 IU Payments By Withholding 140,802.54

599 Other Miscellaneous Purchased Services 2,487.03

Total Other Purchased Services \$8,884,083.89

600 Supplies

610 General Supplies 559,561.66

620 Energy 219,190.98

LEA : 104107903 Seneca Valley SD

Printed 11/21/2019 3:50:05 PM

General Fund (10)

2000 Support Services

Total

600 Supplies

640 Books and Periodicals	24,633.06
650 Supplies & Fees – Technology Related	1,482,969.31

Total Supplies	\$2,286,355.01
-----------------------	-----------------------

700 Property

756 Capitalized Technology Equipment – Original	209,461.48
762 Capitalized Equipment - Replacement	32,100.00

Total Property	\$241,561.48
-----------------------	---------------------

800 Other Objects

810 Dues and Fees	59,314.71
890 Miscellaneous Expenditures	6,577.12

Total Other Objects	\$65,891.83
----------------------------	--------------------

Total 2000 Support Services	\$35,084,577.21
------------------------------------	------------------------

LEA : 104107903 Seneca Valley SD

Printed 11/21/2019 3:50:05 PM

General Fund (10)

	<u>Elementary</u>	<u>Secondary</u>	<u>Federal</u>	<u>Total</u>
2100 Support Services – Students				
100 Personnel Services – Salaries				
100 Personnel Services – Salaries	977,597.07	1,212,293.08		2,225,258.73
Total Personnel Services – Salaries	\$977,597.07	\$1,212,293.08		\$2,225,258.73
200 Personnel Services – Employee Benefits				
210 Group Insurance – Contracted Provider	191,596.76	305,700.24		510,399.08
220 Social Security Contributions	73,164.34	92,016.21		167,631.70
230 PSERS Retirement Contributions	319,443.12	403,743.90		734,209.12
250 Unemployment Compensation	145.28	170.46		326.29
260 Workers' Compensation	1,843.86	4,713.89		6,560.52
Total Personnel Services – Employee Benefits	\$586,193.36	\$806,344.70		\$1,419,126.71
300 Purchased Professional and Technical Services				
329 Professional Educational Services – Other	62,335.64	65,071.87		127,407.51
330 Other Professional Services	7,439.00	3,375.00		10,814.00
Total Purchased Professional and Technical Services	\$69,774.64	\$68,446.87		\$138,221.51
500 Other Purchased Services				
510 Student Transportation Services	384.31	3,223.66		3,607.97
550 Printing and Binding		51.28		51.28
580 Travel	99.21	583.07		682.28
Total Other Purchased Services	\$483.52	\$3,858.01		\$4,341.53
600 Supplies				
610 General Supplies	13,724.30	12,030.14		25,754.44
640 Books and Periodicals		(3,826.00)		(3,826.00)
Total Supplies	\$13,724.30	\$8,204.14		\$21,928.44
800 Other Objects				
810 Dues and Fees	942.51	1,356.51		2,299.02
Total Other Objects	\$942.51	\$1,356.51		\$2,299.02
Total 2100 Support Services – Students	\$1,648,715.40	\$2,100,503.31		\$3,811,175.94

LEA : 104107903 Seneca Valley SD

Printed 11/21/2019 3:50:05 PM

General Fund (10)

2120 Guidance Services

	<u>Elementary</u>	<u>Secondary</u>	<u>Federal</u>	<u>Total</u>
100 Personnel Services – Salaries				
100 Personnel Services – Salaries	586,686.64	1,048,751.30		1,635,437.94
Total Personnel Services – Salaries	\$586,686.64	\$1,048,751.30		\$1,635,437.94
200 Personnel Services – Employee Benefits				
210 Group Insurance – Contracted Provider	98,567.61	267,604.55		366,172.16
220 Social Security Contributions	44,439.37	79,378.63		123,818.00
230 PSERS Retirement Contributions	191,225.13	348,178.16		539,403.29
250 Unemployment Compensation	93.78	146.99		240.77
260 Workers' Compensation	852.48	3,882.41		4,734.89
Total Personnel Services – Employee Benefits	\$335,178.37	\$699,190.74		\$1,034,369.11
300 Purchased Professional and Technical Services				
329 Professional Educational Services – Other	350.00	178.85		528.85
330 Other Professional Services		1,875.00		1,875.00
Total Purchased Professional and Technical Services	\$350.00	\$2,053.85		\$2,403.85
500 Other Purchased Services				
510 Student Transportation Services	384.31	3,223.66		3,607.97
550 Printing and Binding		51.28		51.28
580 Travel		45.24		45.24
Total Other Purchased Services	\$384.31	\$3,320.18		\$3,704.49
600 Supplies				
610 General Supplies	3,776.65	3,170.12		6,946.77
640 Books and Periodicals		(3,826.00)		(3,826.00)
Total Supplies	\$3,776.65	(\$655.88)		\$3,120.77
800 Other Objects				
810 Dues and Fees		539.00		539.00
Total Other Objects		\$539.00		\$539.00
Total 2120 Guidance Services	\$926,375.97	\$1,753,199.19		\$2,679,575.16

General Fund (10)

2140 Psychological Services

	<u>Elementary</u>	<u>Secondary</u>	<u>Federal</u>	<u>Total</u>
100 Personnel Services – Salaries				
100 Personnel Services – Salaries	390,910.43	163,541.78		554,452.21
Total Personnel Services – Salaries	\$390,910.43	\$163,541.78		\$554,452.21
200 Personnel Services – Employee Benefits				
210 Group Insurance – Contracted Provider	93,029.15	38,095.69		131,124.84
220 Social Security Contributions	28,724.97	12,637.58		41,362.55
230 PSERS Retirement Contributions	128,217.99	55,565.74		183,783.73
250 Unemployment Compensation	51.50	23.47		74.97
260 Workers' Compensation	991.38	831.48		1,822.86
Total Personnel Services – Employee Benefits	\$251,014.99	\$107,153.96		\$358,168.95
300 Purchased Professional and Technical Services				
329 Professional Educational Services – Other	59,010.64	61,305.52		120,316.16
330 Other Professional Services	7,439.00	1,500.00		8,939.00
Total Purchased Professional and Technical Services	\$66,449.64	\$62,805.52		\$129,255.16
500 Other Purchased Services				
580 Travel	99.21	537.83		637.04
Total Other Purchased Services	\$99.21	\$537.83		\$637.04
600 Supplies				
610 General Supplies	9,947.65	8,860.02		18,807.67
Total Supplies	\$9,947.65	\$8,860.02		\$18,807.67
800 Other Objects				
810 Dues and Fees	942.51	817.51		1,760.02
Total Other Objects	\$942.51	\$817.51		\$1,760.02
Total 2140 Psychological Services	\$719,364.43	\$343,716.62		\$1,063,081.05

General Fund (10)

	<u>Elementary</u>	<u>Secondary</u>	<u>Federal</u>	<u>Total</u>
2150 Speech Pathology and Audiology Services				
300 <u>Purchased Professional and Technical Services</u>				
329 Professional Educational Services – Other	2,975.00	3,587.50		6,562.50
Total Purchased Professional and Technical Services	\$2,975.00	\$3,587.50		\$6,562.50
Total 2150 Speech Pathology and Audiology Services	\$2,975.00	\$3,587.50		\$6,562.50

General Fund (10)

2170 Student Accounting Services

Elementary

Secondary

Federal

Total

100 Personnel Services – Salaries

100 Personnel Services – Salaries

35,368.58

Total Personnel Services – Salaries

\$35,368.58

200 Personnel Services – Employee Benefits

210 Group Insurance – Contracted Provider

13,102.08

220 Social Security Contributions

2,451.15

230 PSERS Retirement Contributions

11,022.10

250 Unemployment Compensation

10.55

260 Workers' Compensation

2.77

Total Personnel Services – Employee Benefits

\$26,588.65

Total 2170 Student Accounting Services

\$61,957.23

General Fund (10)

2200 Support Services – Instructional Staff

	<u>Elementary</u>	<u>Secondary</u>	<u>Federal</u>	<u>Total</u>
100 Personnel Services – Salaries				
100 Personnel Services – Salaries	748,063.94	620,150.08		1,368,214.02
Total Personnel Services – Salaries	\$748,063.94	\$620,150.08		\$1,368,214.02
200 Personnel Services – Employee Benefits				
210 Group Insurance – Contracted Provider	166,502.17	161,266.65		327,768.82
220 Social Security Contributions	54,620.82	44,098.04		98,718.86
230 PSERS Retirement Contributions	246,383.70	204,674.78		451,058.48
240 Tuition Reimbursement	96,825.00	69,798.10		166,623.10
250 Unemployment Compensation	84.76	72.12		156.88
260 Workers' Compensation	2,638.96	1,623.50		4,262.46
Total Personnel Services – Employee Benefits	\$567,055.41	\$481,533.19		\$1,048,588.60
300 Purchased Professional and Technical Services				
329 Professional Educational Services – Other	7,390.00			7,390.00
330 Other Professional Services	3,000.00	17,076.00		20,076.00
360 Employee Training and Development Services	20,242.74	78,623.04		98,865.78
390 Other Purchased Professional and Technical Services		8,237.00		8,237.00
Total Purchased Professional and Technical Services	\$30,632.74	\$103,936.04		\$134,568.78
500 Other Purchased Services				
580 Travel	1,692.48	1,404.23	600.00	3,696.71
Total Other Purchased Services	\$1,692.48	\$1,404.23	\$600.00	\$3,696.71
600 Supplies				
610 General Supplies	3,912.09	4,799.58		8,711.67
640 Books and Periodicals	16,927.51	7,923.56		24,851.07
650 Supplies & Fees – Technology Related		21,493.45		21,493.45
Total Supplies	\$20,839.60	\$34,216.59		\$55,056.19
800 Other Objects				
810 Dues and Fees	2,185.00	3,420.00		5,605.00
Total Other Objects	\$2,185.00	\$3,420.00		\$5,605.00
Total 2200 Support Services – Instructional Staff	\$1,370,469.17	\$1,244,660.13	\$600.00	\$2,615,729.30

General Fund (10)

2220 Technology Support Services

600 Supplies

650 Supplies & Fees – Technology Related

Total Supplies

Total 2220 Technology Support Services

Elementary

Secondary

Federal

Total

18,254.53

18,254.53

\$18,254.53

\$18,254.53

\$18,254.53

\$18,254.53

General Fund (10)

2240 Computer-Assisted Instruction Support Services

Elementary

Secondary

Federal

Total

600 Supplies

650 Supplies & Fees – Technology Related

3,238.92

3,238.92

Total Supplies

\$3,238.92

\$3,238.92

Total 2240 Computer-Assisted Instruction Support Services

\$3,238.92

\$3,238.92

General Fund (10)

	<u>Elementary</u>	<u>Secondary</u>	<u>Federal</u>	<u>Total</u>
2250 School Library Services				
100 Personnel Services – Salaries				
100 Personnel Services – Salaries	409,196.46	237,801.34		646,997.80
Total Personnel Services – Salaries	\$409,196.46	\$237,801.34		\$646,997.80
200 Personnel Services – Employee Benefits				
210 Group Insurance – Contracted Provider	105,835.55	82,684.72		188,520.27
220 Social Security Contributions	31,122.58	18,191.79		49,314.37
230 PSERS Retirement Contributions	135,704.54	78,764.83		214,469.37
250 Unemployment Compensation	53.41	31.37		84.78
260 Workers' Compensation	1,729.00	475.45		2,204.45
Total Personnel Services – Employee Benefits	\$274,445.08	\$180,148.16		\$454,593.24
300 Purchased Professional and Technical Services				
330 Other Professional Services		3,750.00		3,750.00
390 Other Purchased Professional and Technical Services		2,503.00		2,503.00
Total Purchased Professional and Technical Services		\$6,253.00		\$6,253.00
600 Supplies				
610 General Supplies	3,912.09	994.75		4,906.84
640 Books and Periodicals	5,662.63	7,923.56		13,586.19
Total Supplies	\$9,574.72	\$8,918.31		\$18,493.03
Total 2250 School Library Services	\$693,216.26	\$433,120.81		\$1,126,337.07

General Fund (10)

	<u>Elementary</u>	<u>Secondary</u>	<u>Federal</u>	<u>Total</u>
2260 Instruction and Curriculum Development Services				
100 Personnel Services – Salaries				
100 Personnel Services – Salaries	321,445.17	368,378.78		689,823.95
Total Personnel Services – Salaries	\$321,445.17	\$368,378.78		\$689,823.95
200 Personnel Services – Employee Benefits				
210 Group Insurance – Contracted Provider	60,666.62	78,581.93		139,248.55
220 Social Security Contributions	22,166.72	24,838.81		47,005.53
230 PSERS Retirement Contributions	104,854.86	121,296.62		226,151.48
250 Unemployment Compensation	30.02	40.04		70.06
260 Workers' Compensation	880.95	1,126.85		2,007.80
Total Personnel Services – Employee Benefits	\$188,599.17	\$225,884.25		\$414,483.42
300 Purchased Professional and Technical Services				
329 Professional Educational Services – Other	7,390.00			7,390.00
330 Other Professional Services	3,000.00	13,326.00		16,326.00
Total Purchased Professional and Technical Services	\$10,390.00	\$13,326.00		\$23,716.00
500 Other Purchased Services				
580 Travel	1,692.48	1,404.23		3,096.71
Total Other Purchased Services	\$1,692.48	\$1,404.23		\$3,096.71
600 Supplies				
610 General Supplies		3,804.83		3,804.83
640 Books and Periodicals	11,264.88			11,264.88
Total Supplies	\$11,264.88	\$3,804.83		\$15,069.71
800 Other Objects				
810 Dues and Fees	2,185.00	2,335.00		4,520.00
Total Other Objects	\$2,185.00	\$2,335.00		\$4,520.00
Total 2260 Instruction and Curriculum Development Services	\$535,576.70	\$615,133.09		\$1,150,709.79

General Fund (10)

	<u>Elementary</u>	<u>Secondary</u>	<u>Federal</u>	<u>Total</u>
2270 Instructional Staff Professional Development Services				
100 Personnel Services – Salaries				
100 Personnel Services – Salaries		965.31		965.31
Total Personnel Services – Salaries		\$965.31		\$965.31
200 Personnel Services – Employee Benefits				
220 Social Security Contributions		73.46		73.46
230 PSERS Retirement Contributions		265.87		265.87
240 Tuition Reimbursement	96,825.00	69,798.10		166,623.10
250 Unemployment Compensation		0.17		0.17
260 Workers' Compensation		2.37		2.37
Total Personnel Services – Employee Benefits	\$96,825.00	\$70,139.97		\$166,964.97
300 Purchased Professional and Technical Services				
360 Employee Training and Development Services	20,242.74	78,623.04		98,865.78
390 Other Purchased Professional and Technical Services		5,734.00		5,734.00
Total Purchased Professional and Technical Services	\$20,242.74	\$84,357.04		\$104,599.78
500 Other Purchased Services				
580 Travel			600.00	600.00
Total Other Purchased Services			\$600.00	\$600.00
800 Other Objects				
810 Dues and Fees		1,085.00		1,085.00
Total Other Objects		\$1,085.00		\$1,085.00
Total 2270 Instructional Staff Professional Development Services	\$117,067.74	\$156,547.32	\$600.00	\$274,215.06

General Fund (10)

2280 Nonpublic Support Services

100 Personnel Services – Salaries

	<u>Elementary</u>	<u>Secondary</u>	<u>Federal</u>	<u>Total</u>
100 Personnel Services – Salaries	17,422.31	13,004.65		30,426.96
Total Personnel Services – Salaries	\$17,422.31	\$13,004.65		\$30,426.96

200 Personnel Services – Employee Benefits

220 Social Security Contributions	1,331.52	993.98		2,325.50
230 PSERS Retirement Contributions	5,824.30	4,347.46		10,171.76
250 Unemployment Compensation	1.33	0.54		1.87
260 Workers' Compensation	29.01	18.83		47.84
Total Personnel Services – Employee Benefits	\$7,186.16	\$5,360.81		\$12,546.97
Total 2280 Nonpublic Support Services	\$24,608.47	\$18,365.46		\$42,973.93

General Fund (10)

	<u>Elementary</u>	<u>Secondary</u>	<u>Federal</u>	<u>Total</u>
2300 Support Services – Administration				
100 Personnel Services – Salaries				
100 Personnel Services – Salaries	1,597,885.53	1,483,013.41		3,584,321.30
Total Personnel Services – Salaries	\$1,597,885.53	\$1,483,013.41		\$3,584,321.30
200 Personnel Services – Employee Benefits				
210 Group Insurance – Contracted Provider	415,385.40	379,897.70		898,629.86
220 Social Security Contributions	118,711.48	112,037.18		263,337.16
230 PSERS Retirement Contributions	526,573.92	492,368.10		1,154,476.94
250 Unemployment Compensation	251.41	229.72		527.25
260 Workers' Compensation	3,100.65	5,423.18		10,358.45
Total Personnel Services – Employee Benefits	\$1,064,022.86	\$989,955.88		\$2,327,329.66
300 Purchased Professional and Technical Services				
310 Official / Administrative Services				56,483.29
329 Professional Educational Services – Other				90,428.14
330 Other Professional Services	2,625.00	12,476.00		284,979.70
390 Other Purchased Professional and Technical Services				4,666.45
Total Purchased Professional and Technical Services	\$2,625.00	\$12,476.00		\$436,557.58
400 Purchased Property Services				
430 Repairs and Maintenance Services	155.82			6,190.19
440 Rentals				31,110.96
Total Purchased Property Services	\$155.82			\$37,301.15
500 Other Purchased Services				
520 Insurance – General				54,033.25
530 Communications	18,961.69	16,319.13		40,516.58
549 Other Advertising/Public Relations				15,680.91
550 Printing and Binding	628.19	775.25		45,282.52
580 Travel	362.93	11,026.93		14,543.93
599 Other Miscellaneous Purchased Services				2,487.03
Total Other Purchased Services	\$19,952.81	\$28,121.31		\$172,544.22
600 Supplies				
610 General Supplies	5,651.66	12,205.71		62,202.57
640 Books and Periodicals	970.06	382.51		2,804.53
Total Supplies	\$6,621.72	\$12,588.22		\$65,007.10
800 Other Objects				
810 Dues and Fees	8,715.00	6,310.00		42,090.69
890 Miscellaneous Expenditures				6,577.12
Total Other Objects	\$8,715.00	\$6,310.00		\$48,667.81
Total 2300 Support Services – Administration	\$2,699,978.74	\$2,532,464.82		\$6,671,728.82

General Fund (10)

2310 Board Services

Elementary

Secondary

Federal

Total

300 Purchased Professional and Technical Services

330 Other Professional Services

16,815.00

Total Purchased Professional and Technical Services

\$16,815.00

400 Purchased Property Services

430 Repairs and Maintenance Services

6,034.37

440 Rentals

31,110.96

Total Purchased Property Services

\$37,145.33

500 Other Purchased Services

520 Insurance – General

54,033.25

549 Other Advertising/Public Relations

15,680.91

580 Travel

2,552.93

599 Other Miscellaneous Purchased Services

222.36

Total Other Purchased Services

\$72,489.45

600 Supplies

610 General Supplies

4,051.53

Total Supplies

\$4,051.53

800 Other Objects

810 Dues and Fees

14,551.39

Total Other Objects

\$14,551.39

Total 2310 Board Services

\$145,052.70

General Fund (10)

2330 Tax Assessment and Collection Services	<u>Elementary</u>	<u>Secondary</u>	<u>Federal</u>	<u>Total</u>
100 Personnel Services – Salaries				
100 Personnel Services – Salaries				84,044.25
Total Personnel Services – Salaries				\$84,044.25
200 Personnel Services – Employee Benefits				
220 Social Security Contributions				6,429.45
260 Workers' Compensation				290.22
Total Personnel Services – Employee Benefits				\$6,719.67
300 Purchased Professional and Technical Services				
310 Official / Administrative Services				56,483.29
330 Other Professional Services				177,547.83
390 Other Purchased Professional and Technical Services				4,666.45
Total Purchased Professional and Technical Services				\$238,697.57
500 Other Purchased Services				
530 Communications				3,884.83
599 Other Miscellaneous Purchased Services				2,264.67
Total Other Purchased Services				\$6,149.50
800 Other Objects				
890 Miscellaneous Expenditures				6,577.12
Total Other Objects				\$6,577.12
Total 2330 Tax Assessment and Collection Services				\$342,188.11

General Fund (10)

2350 Legal and Accounting Services

Elementary

Secondary

Federal

Total

300 Purchased Professional and Technical Services

330 Other Professional Services

62,737.87

Total Purchased Professional and Technical Services

\$62,737.87

Total 2350 Legal and Accounting Services

\$62,737.87

General Fund (10)

	<u>Elementary</u>	<u>Secondary</u>	<u>Federal</u>	<u>Total</u>
2360 Office of the Superintendent / Executive Director Services				
100 Personnel Services – Salaries				
100 Personnel Services – Salaries				277,160.01
Total Personnel Services – Salaries				\$277,160.01
200 Personnel Services – Employee Benefits				
210 Group Insurance – Contracted Provider				65,180.92
220 Social Security Contributions				15,386.03
230 PSERS Retirement Contributions				88,140.29
250 Unemployment Compensation				26.11
260 Workers' Compensation				1,052.74
Total Personnel Services – Employee Benefits				\$169,786.09
300 Purchased Professional and Technical Services				
330 Other Professional Services				11,278.00
Total Purchased Professional and Technical Services				\$11,278.00
500 Other Purchased Services				
530 Communications	8,387.25	8,387.24		16,774.49
550 Printing and Binding				33.12
580 Travel				542.35
Total Other Purchased Services	\$8,387.25	\$8,387.24		\$17,349.96
600 Supplies				
610 General Supplies				6,336.49
640 Books and Periodicals				1,451.96
Total Supplies				\$7,788.45
800 Other Objects				
810 Dues and Fees				9,010.00
Total Other Objects				\$9,010.00
Total 2360 Office of the Superintendent / Executive Director Services	\$8,387.25	\$8,387.24		\$492,372.51

General Fund (10)

2370 Community Relations Services

Elementary Secondary Federal Total

100 Personnel Services – Salaries

100 Personnel Services – Salaries 142,218.10

Total Personnel Services – Salaries \$142,218.10

200 Personnel Services – Employee Benefits

210 Group Insurance – Contracted Provider 38,165.84

220 Social Security Contributions 10,773.02

230 PSERS Retirement Contributions 47,394.63

250 Unemployment Compensation 20.01

260 Workers' Compensation 491.66

Total Personnel Services – Employee Benefits \$96,845.16

300 Purchased Professional and Technical Services

329 Professional Educational Services – Other 90,428.14

330 Other Professional Services 1,500.00

Total Purchased Professional and Technical Services \$91,928.14

500 Other Purchased Services

530 Communications 1,350.93

550 Printing and Binding 43,845.96

580 Travel 58.79

Total Other Purchased Services \$45,255.68

600 Supplies

610 General Supplies 33,957.18

Total Supplies \$33,957.18

800 Other Objects

810 Dues and Fees 3,504.30

Total Other Objects \$3,504.30

Total 2370 Community Relations Services \$413,708.56

General Fund (10)

2380 Office of the Principal Services

	<u>Elementary</u>	<u>Secondary</u>	<u>Federal</u>	<u>Total</u>
100 Personnel Services – Salaries				
100 Personnel Services – Salaries	1,597,885.53	1,483,013.41		3,080,898.94
Total Personnel Services – Salaries	\$1,597,885.53	\$1,483,013.41		\$3,080,898.94
200 Personnel Services – Employee Benefits				
210 Group Insurance – Contracted Provider	415,385.40	379,897.70		795,283.10
220 Social Security Contributions	118,711.48	112,037.18		230,748.66
230 PSERS Retirement Contributions	526,573.92	492,368.10		1,018,942.02
250 Unemployment Compensation	251.41	229.72		481.13
260 Workers' Compensation	3,100.65	5,423.18		8,523.83
Total Personnel Services – Employee Benefits	\$1,064,022.86	\$989,955.88		\$2,053,978.74
300 Purchased Professional and Technical Services				
330 Other Professional Services	2,625.00	12,476.00		15,101.00
Total Purchased Professional and Technical Services	\$2,625.00	\$12,476.00		\$15,101.00
400 Purchased Property Services				
430 Repairs and Maintenance Services	155.82			155.82
Total Purchased Property Services	\$155.82			\$155.82
500 Other Purchased Services				
530 Communications	10,574.44	7,931.89		18,506.33
550 Printing and Binding	628.19	775.25		1,403.44
580 Travel	362.93	11,026.93		11,389.86
Total Other Purchased Services	\$11,565.56	\$19,734.07		\$31,299.63
600 Supplies				
610 General Supplies	5,651.66	12,205.71		17,857.37
640 Books and Periodicals	970.06	382.51		1,352.57
Total Supplies	\$6,621.72	\$12,588.22		\$19,209.94
800 Other Objects				
810 Dues and Fees	8,715.00	6,310.00		15,025.00
Total Other Objects	\$8,715.00	\$6,310.00		\$15,025.00
Total 2380 Office of the Principal Services	\$2,691,591.49	\$2,524,077.58		\$5,215,669.07

General Fund (10)

2400 Support Services – Pupil Health

Elementary Secondary Federal Total

100	<u>Personnel Services – Salaries</u>				
	100 Personnel Services – Salaries				696,811.98
Total Personnel Services – Salaries					\$696,811.98
200	<u>Personnel Services – Employee Benefits</u>				
	210 Group Insurance – Contracted Provider				182,561.16
	220 Social Security Contributions				52,698.30
	230 PSERS Retirement Contributions				226,924.46
	250 Unemployment Compensation				125.68
	260 Workers' Compensation				2,213.58
Total Personnel Services – Employee Benefits					\$464,523.18
300	<u>Purchased Professional and Technical Services</u>				
	330 Other Professional Services				1,590.00
Total Purchased Professional and Technical Services					\$1,590.00
500	<u>Other Purchased Services</u>				
	580 Travel				426.91
Total Other Purchased Services					\$426.91
600	<u>Supplies</u>				
	610 General Supplies				13,803.94
Total Supplies					\$13,803.94
Total 2400 Support Services – Pupil Health					\$1,177,156.01

General Fund (10)

2420 Medical Services

Elementary

Secondary

Federal

Total

300 Purchased Professional and Technical Services

330 Other Professional Services

840.00

Total Purchased Professional and Technical Services

\$840.00

600 Supplies

610 General Supplies

13,803.94

Total Supplies

\$13,803.94

Total 2420 Medical Services

\$14,643.94

General Fund (10)

2430 Dental Services

Elementary

Secondary

Federal

Total

300 Purchased Professional and Technical Services

330 Other Professional Services

750.00

Total Purchased Professional and Technical Services

\$750.00

Total 2430 Dental Services

\$750.00

General Fund (10)

2440 Nursing Services

100 Personnel Services – Salaries

100 Personnel Services – Salaries 696,811.98

Total Personnel Services – Salaries \$696,811.98

200 Personnel Services – Employee Benefits

210 Group Insurance – Contracted Provider 182,561.16

220 Social Security Contributions 52,698.30

230 PSERS Retirement Contributions 226,924.46

250 Unemployment Compensation 125.68

260 Workers' Compensation 2,213.58

Total Personnel Services – Employee Benefits \$464,523.18

500 Other Purchased Services

580 Travel 426.91

Total Other Purchased Services \$426.91

Total 2440 Nursing Services \$1,161,762.07

Elementary

Secondary

Federal

Total

General Fund (10)

	<u>Elementary</u>	<u>Secondary</u>	<u>Federal</u>	<u>Total</u>
2500 Support Services – Business				
100 Personnel Services – Salaries				
100 Personnel Services – Salaries				383,903.34
Total Personnel Services – Salaries				\$383,903.34
200 Personnel Services – Employee Benefits				
210 Group Insurance – Contracted Provider				79,256.31
220 Social Security Contributions				27,756.56
230 PSERS Retirement Contributions				124,891.84
250 Unemployment Compensation				55.02
260 Workers' Compensation				1,001.28
Total Personnel Services – Employee Benefits				\$232,961.01
300 Purchased Professional and Technical Services				
329 Professional Educational Services – Other				5,437.50
Total Purchased Professional and Technical Services				\$5,437.50
500 Other Purchased Services				
550 Printing and Binding				1,050.41
580 Travel				513.20
Total Other Purchased Services				\$1,563.61
600 Supplies				
610 General Supplies				1,607.98
Total Supplies				\$1,607.98
800 Other Objects				
810 Dues and Fees				370.00
Total Other Objects				\$370.00
Total 2500 Support Services – Business				\$625,843.44

General Fund (10)

2510 Fiscal Services

Elementary

Secondary

Federal

Total

100 Personnel Services – Salaries

100 Personnel Services – Salaries

383,903.34

Total Personnel Services – Salaries

\$383,903.34

200 Personnel Services – Employee Benefits

210 Group Insurance – Contracted Provider

79,256.31

220 Social Security Contributions

27,756.56

230 PSERS Retirement Contributions

124,891.84

250 Unemployment Compensation

55.02

260 Workers' Compensation

1,001.28

Total Personnel Services – Employee Benefits

\$232,961.01

300 Purchased Professional and Technical Services

329 Professional Educational Services – Other

5,437.50

Total Purchased Professional and Technical Services

\$5,437.50

500 Other Purchased Services

550 Printing and Binding

1,050.41

580 Travel

513.20

Total Other Purchased Services

\$1,563.61

600 Supplies

610 General Supplies

1,607.98

Total Supplies

\$1,607.98

800 Other Objects

810 Dues and Fees

370.00

Total Other Objects

\$370.00

Total 2510 Fiscal Services

\$625,843.44

General Fund (10)

2511 Supervision of Fiscal Services - Head of Component

	<u>Elementary</u>	<u>Secondary</u>	<u>Federal</u>	<u>Total</u>
100 Personnel Services – Salaries				
100 Personnel Services – Salaries				171,510.95
Total Personnel Services – Salaries				\$171,510.95
200 Personnel Services – Employee Benefits				
210 Group Insurance – Contracted Provider				37,651.11
220 Social Security Contributions				11,747.56
230 PSERS Retirement Contributions				57,125.44
250 Unemployment Compensation				15.02
260 Workers' Compensation				94.64
Total Personnel Services – Employee Benefits				\$106,633.77
300 Purchased Professional and Technical Services				
329 Professional Educational Services – Other				5,437.50
Total Purchased Professional and Technical Services				\$5,437.50
500 Other Purchased Services				
550 Printing and Binding				1,050.41
580 Travel				513.20
Total Other Purchased Services				\$1,563.61
600 Supplies				
610 General Supplies				1,607.98
Total Supplies				\$1,607.98
800 Other Objects				
810 Dues and Fees				370.00
Total Other Objects				\$370.00
Total 2511 Supervision of Fiscal Services - Head of Component				\$287,123.81

General Fund (10)

2513 Receiving and Disbursing Funds Services

Elementary

Secondary

Federal

Total

100 Personnel Services – Salaries

100 Personnel Services – Salaries

37,155.90

Total Personnel Services – Salaries

\$37,155.90

200 Personnel Services – Employee Benefits

210 Group Insurance – Contracted Provider

19,772.76

220 Social Security Contributions

2,712.45

230 PSERS Retirement Contributions

12,331.54

250 Unemployment Compensation

10.01

260 Workers' Compensation

184.34

Total Personnel Services – Employee Benefits

\$35,011.10

Total 2513 Receiving and Disbursing Funds Services

\$72,167.00

General Fund (10)

2514 Payroll Services

100 Personnel Services – Salaries

100 Personnel Services – Salaries

Elementary

Secondary

Federal

Total

62,925.55

Total Personnel Services – Salaries

\$62,925.55

200 Personnel Services – Employee Benefits

210 Group Insurance – Contracted Provider

1,029.84

220 Social Security Contributions

4,803.05

230 PSERS Retirement Contributions

19,582.34

250 Unemployment Compensation

9.99

260 Workers' Compensation

313.80

Total Personnel Services – Employee Benefits

\$25,739.02

Total 2514 Payroll Services

\$88,664.57

General Fund (10)

	<u>Elementary</u>	<u>Secondary</u>	<u>Federal</u>	<u>Total</u>
2515 Financial Accounting Services				
100 Personnel Services – Salaries				
100 Personnel Services – Salaries				81,884.82
Total Personnel Services – Salaries				\$81,884.82
200 Personnel Services – Employee Benefits				
210 Group Insurance – Contracted Provider				1,029.84
220 Social Security Contributions				6,250.04
230 PSERS Retirement Contributions				25,745.11
250 Unemployment Compensation				9.99
260 Workers' Compensation				408.50
Total Personnel Services – Employee Benefits				\$33,443.48
Total 2515 Financial Accounting Services				\$115,328.30

General Fund (10)

2519 Other Fiscal Services

Elementary

Secondary

Federal

Total

100 Personnel Services – Salaries

100 Personnel Services – Salaries

30,426.12

Total Personnel Services – Salaries

\$30,426.12

200 Personnel Services – Employee Benefits

210 Group Insurance – Contracted Provider

19,772.76

220 Social Security Contributions

2,243.46

230 PSERS Retirement Contributions

10,107.41

250 Unemployment Compensation

10.01

Total Personnel Services – Employee Benefits

\$32,133.64

Total 2519 Other Fiscal Services

\$62,559.76

General Fund (10)

2600 Operation and Maintenance of Plant Services

Elementary Secondary Federal Total

100	<u>Personnel Services – Salaries</u>			
	100 Personnel Services – Salaries			2,006,208.12
Total Personnel Services – Salaries				\$2,006,208.12
200	<u>Personnel Services – Employee Benefits</u>			
	210 Group Insurance – Contracted Provider			416,417.20
	220 Social Security Contributions			150,296.33
	230 PSERS Retirement Contributions			664,940.35
	250 Unemployment Compensation			386.98
	260 Workers' Compensation			7,728.29
Total Personnel Services – Employee Benefits				\$1,239,769.15
300	<u>Purchased Professional and Technical Services</u>			
	329 Professional Educational Services – Other			454,193.75
	330 Other Professional Services			26,279.00
Total Purchased Professional and Technical Services				\$480,472.75
400	<u>Purchased Property Services</u>			
	410 Cleaning Services			2,010,223.24
	420 Utility Services			918,865.83
	430 Repairs and Maintenance Services			527,286.87
	440 Rentals			4,672.23
	490 Other Purchased Property Services			3,909.83
Total Purchased Property Services				\$3,464,958.00
500	<u>Other Purchased Services</u>			
	521 Fire Insurance			170,970.00
	522 Automotive Liability Insurance			9,332.50
	523 General Property and Liability Insurance			10,170.00
	530 Communications			114,440.56
	580 Travel			5,953.67
Total Other Purchased Services				\$310,866.73
600	<u>Supplies</u>			
	610 General Supplies	186,332.43	251,641.17	437,973.60
	620 Energy			219,190.98
Total Supplies				\$657,164.58
700	<u>Property</u>			
	762 Capitalized Equipment - Replacement			32,100.00
Total Property				\$32,100.00
800	<u>Other Objects</u>			
	810 Dues and Fees			7,800.00
Total Other Objects				\$7,800.00
Total 2600 Operation and Maintenance of Plant Services		\$186,332.43	\$251,641.17	\$8,199,339.33

General Fund (10)

2610 Supervision of Operation and Maintenance of Plant Services

Elementary

Secondary

Federal

Total

100 Personnel Services – Salaries

100 Personnel Services – Salaries

192,430.00

Total Personnel Services – Salaries

\$192,430.00

200 Personnel Services – Employee Benefits

210 Group Insurance – Contracted Provider

45,580.68

220 Social Security Contributions

14,478.19

230 PSERS Retirement Contributions

64,081.52

250 Unemployment Compensation

40.00

260 Workers' Compensation

94.64

Total Personnel Services – Employee Benefits

\$124,275.03

Total 2610 Supervision of Operation and Maintenance of Plant Services

\$316,705.03

General Fund (10)

2611 Supervision of Operation and Maintenance of Plant Services – Head of Component

Elementary

Secondary

Federal

Total

100 Personnel Services – Salaries

100 Personnel Services – Salaries

126,849.28

Total Personnel Services – Salaries

\$126,849.28

200 Personnel Services – Employee Benefits

210 Group Insurance – Contracted Provider

19,736.65

220 Social Security Contributions

9,575.36

230 PSERS Retirement Contributions

42,258.74

250 Unemployment Compensation

21.13

260 Workers' Compensation

94.64

Total Personnel Services – Employee Benefits

\$71,686.52

Total 2611 Supervision of Operation and Maintenance of Plant Services – Head of Component

\$198,535.80

General Fund (10)

2619 Supervision of Operation and Maintenance of Plant Services – All Other Supervision

Elementary

Secondary

Federal

Total

100 Personnel Services – Salaries

100 Personnel Services – Salaries

65,580.72

Total Personnel Services – Salaries

\$65,580.72

200 Personnel Services – Employee Benefits

210 Group Insurance – Contracted Provider

25,844.03

220 Social Security Contributions

4,902.83

230 PSERS Retirement Contributions

21,822.78

250 Unemployment Compensation

18.87

Total Personnel Services – Employee Benefits

\$52,588.51

Total 2619 Supervision of Operation and Maintenance of Plant Services – All Other Supervision

\$118,169.23

LEA : 104107903 Seneca Valley SD

Printed 11/21/2019 3:50:05 PM

General Fund (10)

2620 Operation of Buildings Services

	<u>Elementary</u>	<u>Secondary</u>	<u>Federal</u>	<u>Total</u>
100 Personnel Services – Salaries				
100 Personnel Services – Salaries				1,714,032.25
Total Personnel Services – Salaries				\$1,714,032.25
200 Personnel Services – Employee Benefits				
210 Group Insurance – Contracted Provider				370,410.76
220 Social Security Contributions				129,128.05
230 PSERS Retirement Contributions				573,151.01
250 Unemployment Compensation				326.98
260 Workers' Compensation				7,633.65
Total Personnel Services – Employee Benefits				\$1,080,650.45
300 Purchased Professional and Technical Services				
330 Other Professional Services				26,279.00
Total Purchased Professional and Technical Services				\$26,279.00
400 Purchased Property Services				
410 Cleaning Services				2,010,223.24
420 Utility Services				918,865.83
430 Repairs and Maintenance Services				527,286.87
440 Rentals				4,672.23
490 Other Purchased Property Services				3,909.83
Total Purchased Property Services				\$3,464,958.00
500 Other Purchased Services				
521 Fire Insurance				170,970.00
522 Automotive Liability Insurance				9,332.50
523 General Property and Liability Insurance				10,170.00
530 Communications				114,440.56
580 Travel				292.96
Total Other Purchased Services				\$305,206.02
600 Supplies				
610 General Supplies	186,332.43	203,127.88		389,460.31
620 Energy				210,976.14
Total Supplies	\$186,332.43	\$203,127.88		\$600,436.45
700 Property				
762 Capitalized Equipment - Replacement				32,100.00
Total Property				\$32,100.00
800 Other Objects				
810 Dues and Fees				7,800.00
Total Other Objects				\$7,800.00
Total 2620 Operation of Buildings Services	\$186,332.43	\$203,127.88		\$7,231,462.17

General Fund (10)

	<u>Elementary</u>	<u>Secondary</u>	<u>Federal</u>	<u>Total</u>
2650 Vehicle Operation and Maintenance Services (Other Than Student Transportation Vehicles)				
600 <u>Supplies</u>				
620 Energy				8,214.84
Total Supplies				\$8,214.84
Total 2650 Vehicle Operation and Maintenance Services (Other Than Student Transportation Vehicles)				\$8,214.84

General Fund (10)

	<u>Elementary</u>	<u>Secondary</u>	<u>Federal</u>	<u>Total</u>
2660 Safety and Security Services				
100 Personnel Services – Salaries				
100 Personnel Services – Salaries				99,745.87
Total Personnel Services – Salaries				\$99,745.87
200 Personnel Services – Employee Benefits				
210 Group Insurance – Contracted Provider				425.76
220 Social Security Contributions				6,690.09
230 PSERS Retirement Contributions				27,707.82
250 Unemployment Compensation				20.00
Total Personnel Services – Employee Benefits				\$34,843.67
300 Purchased Professional and Technical Services				
329 Professional Educational Services – Other				454,193.75
Total Purchased Professional and Technical Services				\$454,193.75
500 Other Purchased Services				
580 Travel				5,660.71
Total Other Purchased Services				\$5,660.71
600 Supplies				
610 General Supplies		48,513.29		48,513.29
Total Supplies		\$48,513.29		\$48,513.29
Total 2660 Safety and Security Services		\$48,513.29		\$642,957.29

General Fund (10)

2700 Student Transportation Services

Elementary Secondary Federal Total

100 Personnel Services – Salaries

100 Personnel Services – Salaries 169,226.60

Total Personnel Services – Salaries \$169,226.60

200 Personnel Services – Employee Benefits

210 Group Insurance – Contracted Provider 59,802.43

220 Social Security Contributions 12,478.02

230 PSERS Retirement Contributions 56,410.95

250 Unemployment Compensation 33.61

260 Workers' Compensation 215.54

Total Personnel Services – Employee Benefits \$128,940.55

300 Purchased Professional and Technical Services

329 Professional Educational Services – Other 15,295.00

Total Purchased Professional and Technical Services \$15,295.00

500 Other Purchased Services

513 Contracted Carriers 8,245,706.78

516 Student Transportation Services From the IU 868.68

530 Communications 456.48

580 Travel 1,428.75

Total Other Purchased Services \$8,248,460.69

600 Supplies

610 General Supplies 7,252.71

Total Supplies \$7,252.71

800 Other Objects

810 Dues and Fees 100.00

Total Other Objects \$100.00

Total 2700 Student Transportation Services \$8,569,275.55

General Fund (10)

2710 Supervision of Student Transportation Services

Elementary

Secondary

Federal

Total

100 Personnel Services – Salaries

100 Personnel Services – Salaries

169,226.60

Total Personnel Services – Salaries

\$169,226.60

200 Personnel Services – Employee Benefits

210 Group Insurance – Contracted Provider

59,802.43

220 Social Security Contributions

12,478.02

230 PSERS Retirement Contributions

56,410.95

250 Unemployment Compensation

33.61

260 Workers' Compensation

215.54

Total Personnel Services – Employee Benefits

\$128,940.55

300 Purchased Professional and Technical Services

329 Professional Educational Services – Other

15,295.00

Total Purchased Professional and Technical Services

\$15,295.00

600 Supplies

610 General Supplies

22.05

Total Supplies

\$22.05

800 Other Objects

810 Dues and Fees

100.00

Total Other Objects

\$100.00

Total 2710 Supervision of Student Transportation Services

\$313,584.20

General Fund (10)

2711 Supervision of Student Transportation Services – Head of Component

Elementary

Secondary

Federal

Total

100 Personnel Services – Salaries

100 Personnel Services – Salaries

97,996.65

Total Personnel Services – Salaries

\$97,996.65

200 Personnel Services – Employee Benefits

210 Group Insurance – Contracted Provider

33,059.95

220 Social Security Contributions

7,146.23

230 PSERS Retirement Contributions

32,633.05

250 Unemployment Compensation

9.99

Total Personnel Services – Employee Benefits

\$72,849.22

300 Purchased Professional and Technical Services

329 Professional Educational Services – Other

15,295.00

Total Purchased Professional and Technical Services

\$15,295.00

600 Supplies

610 General Supplies

22.05

Total Supplies

\$22.05

800 Other Objects

810 Dues and Fees

100.00

Total Other Objects

\$100.00

Total 2711 Supervision of Student Transportation Services – Head of Component

\$186,262.92

General Fund (10)

	<u>Elementary</u>	<u>Secondary</u>	<u>Federal</u>	<u>Total</u>
2719 Supervision of Student Transportation Services – All Other Supervision				
100 Personnel Services – Salaries				
100 Personnel Services – Salaries				71,229.95
Total Personnel Services – Salaries				\$71,229.95
200 Personnel Services – Employee Benefits				
210 Group Insurance – Contracted Provider				26,742.48
220 Social Security Contributions				5,331.79
230 PSERS Retirement Contributions				23,777.90
250 Unemployment Compensation				23.62
260 Workers' Compensation				215.54
Total Personnel Services – Employee Benefits				\$56,091.33
Total 2719 Supervision of Student Transportation Services – All Other Supervision				\$127,321.28

General Fund (10)

2720 Vehicle Operation Services

Elementary

Secondary

Federal

Total

500 Other Purchased Services

513 Contracted Carriers

6,926,507.80

516 Student Transportation Services From the IU

868.68

530 Communications

456.48

580 Travel

1,428.75

Total Other Purchased Services

\$6,929,261.71

600 Supplies

610 General Supplies

7,230.66

Total Supplies

\$7,230.66

Total 2720 Vehicle Operation Services

\$6,936,492.37

General Fund (10)

2750 Nonpublic Transportation

Elementary

Secondary

Federal

Total

500 Other Purchased Services

513 Contracted Carriers

1,319,198.98

Total Other Purchased Services

\$1,319,198.98

Total 2750 Nonpublic Transportation

\$1,319,198.98

General Fund (10)

2800 Support Services – Central

Elementary Secondary Federal Total

100	<u>Personnel Services – Salaries</u>				
	100 Personnel Services – Salaries				386,123.69
Total Personnel Services – Salaries					\$386,123.69
200	<u>Personnel Services – Employee Benefits</u>				
	210 Group Insurance – Contracted Provider				103,942.97
	220 Social Security Contributions				27,975.30
	230 PSERS Retirement Contributions				128,717.25
	240 Tuition Reimbursement				51,704.00
	250 Unemployment Compensation				72.12
	260 Workers' Compensation				1,615.49
Total Personnel Services – Employee Benefits					\$314,027.13
300	<u>Purchased Professional and Technical Services</u>				
	329 Professional Educational Services – Other				7,919.60
	330 Other Professional Services				5,110.00
	360 Employee Training and Development Services				6,252.68
Total Purchased Professional and Technical Services					\$19,282.28
500	<u>Other Purchased Services</u>				
	550 Printing and Binding				29.50
	580 Travel				769.64
Total Other Purchased Services					\$799.14
600	<u>Supplies</u>				
	610 General Supplies				2,254.75
	640 Books and Periodicals				803.46
Total Supplies					\$3,058.21
800	<u>Other Objects</u>				
	810 Dues and Fees				1,050.00
Total Other Objects					\$1,050.00
Total 2800 Support Services – Central					\$724,340.45

General Fund (10)

2810 Planning, Research, Development and Evaluation Services

Elementary

Secondary

Federal

Total

100 Personnel Services – Salaries

100 Personnel Services – Salaries

117,172.05

Total Personnel Services – Salaries

\$117,172.05

200 Personnel Services – Employee Benefits

210 Group Insurance – Contracted Provider

20,376.11

220 Social Security Contributions

8,580.55

230 PSERS Retirement Contributions

38,904.72

250 Unemployment Compensation

8.90

260 Workers' Compensation

581.98

Total Personnel Services – Employee Benefits

\$68,452.26

Total 2810 Planning, Research, Development and Evaluation Services

\$185,624.31

General Fund (10)

2830 Staff Services

	<u>Elementary</u>	<u>Secondary</u>	<u>Federal</u>	<u>Total</u>
100 Personnel Services – Salaries				
100 Personnel Services – Salaries				266,697.52
Total Personnel Services – Salaries				\$266,697.52
200 Personnel Services – Employee Benefits				
210 Group Insurance – Contracted Provider				82,987.13
220 Social Security Contributions				19,223.84
230 PSERS Retirement Contributions				89,058.98
240 Tuition Reimbursement				51,704.00
250 Unemployment Compensation				60.97
260 Workers' Compensation				1,033.51
Total Personnel Services – Employee Benefits				\$244,068.43
300 Purchased Professional and Technical Services				
329 Professional Educational Services – Other				7,919.60
330 Other Professional Services				5,110.00
360 Employee Training and Development Services				6,252.68
Total Purchased Professional and Technical Services				\$19,282.28
500 Other Purchased Services				
550 Printing and Binding				29.50
580 Travel				769.64
Total Other Purchased Services				\$799.14
600 Supplies				
610 General Supplies				2,254.75
640 Books and Periodicals				803.46
Total Supplies				\$3,058.21
800 Other Objects				
810 Dues and Fees				1,050.00
Total Other Objects				\$1,050.00
Total 2830 Staff Services				\$534,955.58

General Fund (10)

2831 Supervision of Staff Services

Elementary

Secondary

Federal

Total

100 Personnel Services – Salaries

100 Personnel Services – Salaries

266,697.52

Total Personnel Services – Salaries

\$266,697.52

200 Personnel Services – Employee Benefits

210 Group Insurance – Contracted Provider

82,987.13

220 Social Security Contributions

19,223.84

230 PSERS Retirement Contributions

89,058.98

250 Unemployment Compensation

60.97

260 Workers' Compensation

1,033.51

Total Personnel Services – Employee Benefits

\$192,364.43

300 Purchased Professional and Technical Services

329 Professional Educational Services – Other

7,919.60

330 Other Professional Services

5,110.00

Total Purchased Professional and Technical Services

\$13,029.60

500 Other Purchased Services

550 Printing and Binding

29.50

580 Travel

769.64

Total Other Purchased Services

\$799.14

600 Supplies

610 General Supplies

2,254.75

640 Books and Periodicals

803.46

Total Supplies

\$3,058.21

800 Other Objects

810 Dues and Fees

1,050.00

Total Other Objects

\$1,050.00

Total 2831 Supervision of Staff Services

\$476,998.90

General Fund (10)

2834 Staff Development Services – Non-Instructional, Certified Staff Only

Elementary

Secondary

Federal

Total

200 Personnel Services – Employee Benefits

240 Tuition Reimbursement

51,704.00

Total Personnel Services – Employee Benefits

\$51,704.00

Total 2834 Staff Development Services – Non-Instructional, Certified Staff Only

\$51,704.00

General Fund (10)

	<u>Elementary</u>	<u>Secondary</u>	<u>Federal</u>	<u>Total</u>
2836 Staff Development Services – Non-Instructional, Non-Certified Staff Only				
300 <u>Purchased Professional and Technical Services</u>				
360 Employee Training and Development Services				6,252.68
Total Purchased Professional and Technical Services				\$6,252.68
Total 2836 Staff Development Services – Non-Instructional, Non-Certified Staff Only				\$6,252.68

General Fund (10)

2850 State and Federal Agency Liaison Services

Elementary

Secondary

Federal

Total

100 Personnel Services – Salaries

100 Personnel Services – Salaries

2,254.12

Total Personnel Services – Salaries

\$2,254.12

200 Personnel Services – Employee Benefits

210 Group Insurance – Contracted Provider

579.73

220 Social Security Contributions

170.91

230 PSERS Retirement Contributions

753.55

250 Unemployment Compensation

2.25

Total Personnel Services – Employee Benefits

\$1,506.44

Total 2850 State and Federal Agency Liaison Services

\$3,760.56

General Fund (10)

2900 Other Support Services

Elementary

Secondary

Federal

Total

100 Personnel Services – Salaries

100 Personnel Services – Salaries

443,267.44

Total Personnel Services – Salaries

\$443,267.44

200 Personnel Services – Employee Benefits

210 Group Insurance – Contracted Provider

126,008.19

220 Social Security Contributions

32,941.58

230 PSERS Retirement Contributions

146,835.00

250 Unemployment Compensation

59.99

260 Workers' Compensation

918.49

Total Personnel Services – Employee Benefits

\$306,763.25

300 Purchased Professional and Technical Services

340 Technical Services

117,948.28

Total Purchased Professional and Technical Services

\$117,948.28

400 Purchased Property Services

430 Repairs and Maintenance Services

9,687.71

Total Purchased Property Services

\$9,687.71

500 Other Purchased Services

580 Travel

581.81

595 IU Payments By Withholding

140,802.54

Total Other Purchased Services

\$141,384.35

600 Supplies

650 Supplies & Fees – Technology Related

1,461,475.86

Total Supplies

\$1,461,475.86

700 Property

756 Capitalized Technology Equipment – Original

209,461.48

Total Property

\$209,461.48

Total 2900 Other Support Services

\$2,689,988.37

General Fund (10)

2910 Support Services Not Listed Elsewhere In the 2000 Series

	<u>Elementary</u>	<u>Secondary</u>	<u>Federal</u>	<u>Total</u>
100 Personnel Services – Salaries				
100 Personnel Services – Salaries				443,267.44
Total Personnel Services – Salaries				\$443,267.44
200 Personnel Services – Employee Benefits				
210 Group Insurance – Contracted Provider				126,008.19
220 Social Security Contributions				32,941.58
230 PSERS Retirement Contributions				146,835.00
250 Unemployment Compensation				59.99
260 Workers' Compensation				918.49
Total Personnel Services – Employee Benefits				\$306,763.25
300 Purchased Professional and Technical Services				
340 Technical Services				117,948.28
Total Purchased Professional and Technical Services				\$117,948.28
400 Purchased Property Services				
430 Repairs and Maintenance Services				9,687.71
Total Purchased Property Services				\$9,687.71
500 Other Purchased Services				
580 Travel				581.81
595 IU Payments By Withholding				140,802.54
Total Other Purchased Services				\$141,384.35
600 Supplies				
650 Supplies & Fees – Technology Related				1,461,475.86
Total Supplies				\$1,461,475.86
700 Property				
756 Capitalized Technology Equipment – Original				209,461.48
Total Property				\$209,461.48
Total 2910 Support Services Not Listed Elsewhere In the 2000 Series				\$2,689,988.37

General Fund (10)

3000 Operation of Non-Instructional Services

Total

100 Personnel Services – Salaries

100 Personnel Services – Salaries 1,056,942.67

Total Personnel Services – Salaries \$1,056,942.67

200 Personnel Services – Employee Benefits

210 Group Insurance – Contracted Provider 22,017.46

220 Social Security Contributions 82,224.71

230 PSERS Retirement Contributions 328,177.12

250 Unemployment Compensation 390.60

260 Workers' Compensation 1,250.25

Total Personnel Services – Employee Benefits \$434,060.14

300 Purchased Professional and Technical Services

323 Professional Educational Services – Other Educational Agencies (82.15)

330 Other Professional Services 107,698.50

Total Purchased Professional and Technical Services \$107,616.35

400 Purchased Property Services

410 Cleaning Services 5,226.60

430 Repairs and Maintenance Services 22,645.13

440 Rentals 12,755.51

Total Purchased Property Services \$40,627.24

500 Other Purchased Services

510 Student Transportation Services 172,307.42

530 Communications 418.45

550 Printing and Binding 617.46

580 Travel 7,859.71

591 Services Purchased Locally 4,241.43

Total Other Purchased Services \$185,444.47

600 Supplies

610 General Supplies 95,187.71

650 Supplies & Fees – Technology Related 7,699.00

Total Supplies \$102,886.71

700 Property

762 Capitalized Equipment - Replacement 4,782.03

Total Property \$4,782.03

800 Other Objects

810 Dues and Fees 3,781.22

890 Miscellaneous Expenditures 264,412.54

Total Other Objects \$268,193.76

Total 3000 Operation of Non-Instructional Services \$2,200,553.37

General Fund (10)

3200 Student Activities

Elementary Secondary Federal Total

100 Personnel Services – Salaries
100 Personnel Services – Salaries 1,056,942.67

Total Personnel Services – Salaries \$1,056,942.67

200 Personnel Services – Employee Benefits
210 Group Insurance – Contracted Provider 22,017.46
220 Social Security Contributions 82,224.71
230 PSERS Retirement Contributions 328,177.12
250 Unemployment Compensation 390.60
260 Workers' Compensation 1,250.25

Total Personnel Services – Employee Benefits \$434,060.14

300 Purchased Professional and Technical Services
323 Professional Educational Services – Other Educational Agencies (82.15)
330 Other Professional Services 107,698.50

Total Purchased Professional and Technical Services \$107,616.35

400 Purchased Property Services
410 Cleaning Services 5,226.60
430 Repairs and Maintenance Services 22,645.13
440 Rentals 12,755.51

Total Purchased Property Services \$40,627.24

500 Other Purchased Services
510 Student Transportation Services 172,307.42
530 Communications 418.45
550 Printing and Binding 617.46
580 Travel 7,859.71

Total Other Purchased Services \$181,203.04

600 Supplies
610 General Supplies 95,187.71
650 Supplies & Fees – Technology Related 7,699.00

Total Supplies \$102,886.71

700 Property
762 Capitalized Equipment - Replacement 4,782.03

Total Property \$4,782.03

800 Other Objects
810 Dues and Fees 3,781.22
890 Miscellaneous Expenditures 264,412.54

Total Other Objects \$268,193.76

Total 3200 Student Activities \$2,196,311.94

General Fund (10)

3300 Community Services

Elementary

Secondary

Federal

Total

500 Other Purchased Services

591 Services Purchased Locally

4,241.43

Total Other Purchased Services

\$4,241.43

Total 3300 Community Services

\$4,241.43

General Fund (10)

4000 Facilities Acquisition, Construction and Improvement Services

Total

300 Purchased Professional and Technical Services

330 Other Professional Services

39,831.53

Total Purchased Professional and Technical Services

\$39,831.53

Total 4000 Facilities Acquisition, Construction and Improvement Services

\$39,831.53

LEA : 104107903 Seneca Valley SD

Printed 11/21/2019 3:50:15 PM

General Fund (10)

	<u>Elementary</u>	<u>Secondary</u>	<u>Federal</u>	<u>Total</u>
4200 Existing Site Improvement Services				
300 <u>Purchased Professional and Technical Services</u>				
330 Other Professional Services				39,831.53
Total Purchased Professional and Technical Services				\$39,831.53
Total 4200 Existing Site Improvement Services				\$39,831.53

General Fund (10)

5000 Other Expenditures and Financing Uses

Total

800 Other Objects

830 Interest 3,550,551.24

Total Other Objects \$3,550,551.24

900 Other Uses of Funds

910 Redemption of Principal 6,450,000.00

939 Other Fund Transfers 5,000,000.00

Total Other Uses of Funds \$11,450,000.00

Total 5000 Other Expenditures and Financing Uses \$15,000,551.24

General Fund (10)

	<u>Elementary</u>	<u>Secondary</u>	<u>Federal</u>	<u>Total</u>
5100 Debt Service / Other Expenditures and Financing Uses				
800 Other Objects				
830 Interest				3,550,551.24
Total Other Objects				\$3,550,551.24
900 Other Uses of Funds				
910 Redemption of Principal				6,450,000.00
Total Other Uses of Funds				\$6,450,000.00
Total 5100 Debt Service / Other Expenditures and Financing Uses				\$10,000,551.24

General Fund (10)

	<u>Elementary</u>	<u>Secondary</u>	<u>Federal</u>	<u>Total</u>
5110 Debt Service				
800 Other Objects				
830 Interest				3,550,551.24
Total Other Objects				\$3,550,551.24
900 Other Uses of Funds				
910 Redemption of Principal				6,450,000.00
Total Other Uses of Funds				\$6,450,000.00
Total 5110 Debt Service				\$10,000,551.24

General Fund (10)

	<u>Elementary</u>	<u>Secondary</u>	<u>Federal</u>	<u>Total</u>
5200 Interfund Transfers – Out				
900 <u>Other Uses of Funds</u>				
939 Other Fund Transfers				5,000,000.00
Total Other Uses of Funds				\$5,000,000.00
Total 5200 Interfund Transfers – Out				\$5,000,000.00

General Fund (10)

5230 Capital Projects Fund Transfers

Elementary

Secondary

Federal

Total

900 Other Uses of Funds

939 Other Fund Transfers

5,000,000.00

Total Other Uses of Funds

\$5,000,000.00

Total 5230 Capital Projects Fund Transfers

\$5,000,000.00

Other Capital Projects Fund (39)

4000 Facilities Acquisition, Construction and Improvement Services

Total

300 Purchased Professional and Technical Services

330 Other Professional Services 2,570,175.90

390 Other Purchased Professional and Technical Services 148,353.22

Total Purchased Professional and Technical Services \$2,718,529.12

400 Purchased Property Services

450 Construction Services 1,299,090.70

Total Purchased Property Services \$1,299,090.70

700 Property

710 Land and Improvements 50,425.18

Total Property \$50,425.18

Total 4000 Facilities Acquisition, Construction and Improvement Services \$4,068,045.00

LEA : 104107903 Seneca Valley SD

Printed 11/21/2019 3:50:16 PM

Other Capital Projects Fund (39)

4100 Site Acquisition Services – Original and Additional

Elementary

Secondary

Federal

Total

700 Property

710 Land and Improvements

50,425.18

Total Property				\$50,425.18
Total 4100 Site Acquisition Services – Original and Additional				\$50,425.18

LEA : 104107903 Seneca Valley SD

Printed 11/21/2019 3:50:16 PM

Other Capital Projects Fund (39)

4300 Architecture and Engineering Services / Educational Specifications Development – Original and Additional

Elementary

Secondary

Federal

Total

300 Purchased Professional and Technical Services

330 Other Professional Services

1,399,020.51

Total Purchased Professional and Technical Services

\$1,399,020.51

Total 4300 Architecture and Engineering Services / Educational Specifications Development – Original and Additional

\$1,399,020.51

Other Capital Projects Fund (39)

4400 Architecture and Engineering Services / Educational Specifications – Improvements

Elementary

Secondary

Federal

Total

300 Purchased Professional and Technical Services

330 Other Professional Services

1,171,155.39

Total Purchased Professional and Technical Services

\$1,171,155.39

Total 4400 Architecture and Engineering Services / Educational Specifications – Improvements

\$1,171,155.39

Other Capital Projects Fund (39)

	<u>Elementary</u>	<u>Secondary</u>	<u>Federal</u>	<u>Total</u>
4500 Building Acquisition and Construction Services – Original and Additional				
300 <u>Purchased Professional and Technical Services</u>				
390 Other Purchased Professional and Technical Services				148,353.22
Total Purchased Professional and Technical Services				\$148,353.22
Total 4500 Building Acquisition and Construction Services – Original and Additional				\$148,353.22

Other Capital Projects Fund (39)

4600 Existing Building Improvement Services

Elementary

Secondary

Federal

Total

400 Purchased Property Services

450 Construction Services

1,299,090.70

Total Purchased Property Services

\$1,299,090.70

Total 4600 Existing Building Improvement Services

\$1,299,090.70

	<u>General Fund(10)</u>	<u>Public Purpose Trust(27)</u>	<u>Other Compt Approved (28)</u>	<u>Athletic / Activity(29)</u>	<u>Capital Reserve (690, 1850)(31)</u>
1000 Instruction					
1100 Regular Programs - Elementary / Secondary	55,828,666.50				
1200 Special Programs - Elementary / Secondary	20,451,720.67				
1300 Vocational Education	3,582,672.14				
1400 Other Instructional Programs - Elementary / Secondary	295,620.11				
1500 Nonpublic School Programs	31,643.00				
Total Instruction	\$80,190,322.42				
2000 Support Services					
2100 Support Services - Students	3,811,175.94				
2200 Support Services - Instructional Staff	2,615,729.30				
2300 Support Services - Administration	6,671,728.82				
2400 Support Services - Pupil Health	1,177,156.01				
2500 Support Services - Business	625,843.44				
2600 Operation and Maintenance of Plant Services	8,199,339.33				
2700 Student Transportation Services	8,569,275.55				
2800 Support Services - Central	724,340.45				
2900 Other Support Services	2,689,988.37				
Total Support Services	\$35,084,577.21				
3000 Operation of Non-Instructional Services					
3200 Student Activities	2,196,311.94				
3300 Community Services	4,241.43				
Total Operation of Non-Instructional Services	\$2,200,553.37				
4000 Facilities Acquisition, Construction and Improvement Services					
4100 Site Acquisition Services - Original and Additional					
4200 Existing Site Improvement Services	39,831.53				
4300 Architecture and Engineering Services / Educational Specifications Development - Original and Additional					
4400 Architecture and Engineering Services / Educational Specifications - Improvements					
4500 Building Acquisition and Construction Services - Original and Additional					
4600 Existing Building Improvement Services					
Total Facilities Acquisition, Construction and Improvement Services	\$39,831.53				
5000 Other Expenditures and Financing Uses					
5100 Debt Service / Other Expenditures and Financing Uses	10,000,551.24				
5200 Interfund Transfers - Out	5,000,000.00				
Total Other Expenditures and Financing Uses	\$15,000,551.24				

	<u>Capital Reserve (1431)(32)</u>	<u>Other Capital Projects Fund(39)</u>	<u>Debt Service(40)</u>	<u>Permanent(90)</u>	<u>Total</u>
1000 Instruction					
1100 Regular Programs - Elementary / Secondary					55,828,666.50
1200 Special Programs - Elementary / Secondary					20,451,720.67
1300 Vocational Education					3,582,672.14
1400 Other Instructional Programs - Elementary / Secondary					295,620.11
1500 Nonpublic School Programs					31,643.00
Total Instruction					\$80,190,322.42
2000 Support Services					
2100 Support Services - Students					3,811,175.94
2200 Support Services - Instructional Staff					2,615,729.30
2300 Support Services - Administration					6,671,728.82
2400 Support Services - Pupil Health					1,177,156.01
2500 Support Services - Business					625,843.44
2600 Operation and Maintenance of Plant Services					8,199,339.33
2700 Student Transportation Services					8,569,275.55
2800 Support Services - Central					724,340.45
2900 Other Support Services					2,689,988.37
Total Support Services					\$35,084,577.21
3000 Operation of Non-Instructional Services					
3200 Student Activities					2,196,311.94
3300 Community Services					4,241.43
Total Operation of Non-Instructional Services					\$2,200,553.37
4000 Facilities Acquisition, Construction and Improvement Services					
4100 Site Acquisition Services - Original and Additional		50,425.18			50,425.18
4200 Existing Site Improvement Services					39,831.53
4300 Architecture and Engineering Services / Educational Specifications Development - Original and Additional		1,399,020.51			1,399,020.51
4400 Architecture and Engineering Services / Educational Specifications - Improvements		1,171,155.39			1,171,155.39
4500 Building Acquisition and Construction Services - Original and Additional		148,353.22			148,353.22
4600 Existing Building Improvement Services		1,299,090.70			1,299,090.70
Total Facilities Acquisition, Construction and Improvement Services		\$4,068,045.00			\$4,107,876.53
5000 Other Expenditures and Financing Uses					
5100 Debt Service / Other Expenditures and Financing Uses					10,000,551.24
5200 Interfund Transfers - Out					5,000,000.00
Total Other Expenditures and Financing Uses					\$15,000,551.24

	<u>General Fund(10)</u>	<u>Public Purpose Trust(27)</u>	<u>Other Compt Approved (28)</u>	<u>Athletic / Activity(29)</u>	<u>Capital Reserve (690. 1850)(31)</u>
TOTAL ACTUAL EXPENDITURES & OTHER FINANCING USES	\$132,515,835.77				

	<u>Capital Reserve (1431)(32)</u>	<u>Other Capital Projects Fund(39)</u>	<u>Debt Service(40)</u>	<u>Permanent(90)</u>	<u>Total</u>
TOTAL ACTUAL EXPENDITURES & OTHER FINANCING USES		\$4,068,045.00			\$136,583,880.77

PSERS Salary Data (Salary Data should relate to the General Fund only)

Amount Description	Amount
Total Salary Base for salaries subject to PSERS withholding	55,418,512.07
Total Federally Funded salaries subject to PSERS withholding	1,022,568.65
	<hr/>

Title I Expenditure Data

Amount Description	Amount
Expenditures Funded with Current Title I Funds	407,172.00
Expenditures Funded with Carry over Title I Funds	7,556.00
	<hr/>
Total Title I Expenditure Data	\$414,728.00
	<hr/>

Benefits for Staff Relative to Collective Bargaining Agreements

	OBJECT	COVERED	NOT COVERED	TOTAL
10 General Fund				
	211 Medical Insurance	11,126,417.97	857,025.60	11,983,443.57
	212 Dental Insurance	413,733.06	37,912.56	451,645.62
	215 Eye Care Insurance	69,452.25	5,969.40	75,421.65
	216 Prescription Insurance			
	271 Self-Insurance Medical Benefits		50,221.32	50,221.32
	272 Self-Insurance Dental Benefits		1,635.36	1,635.36
	275 Self-Insurance Eye Care Benefits		3,058.80	3,058.80
	276 Self-Insurance Prescription Benefits			
	FUND TOTAL	\$11,609,603.28	\$955,823.04	\$12,565,426.32
50 Enterprise Fund	No Self Insurance data to report			
	211 Medical Insurance			
	212 Dental Insurance			
	215 Eye Care Insurance			
	216 Prescription Insurance			
	271 Self-Insurance Medical Benefits			
	272 Self-Insurance Dental Benefits			
	275 Self-Insurance Eye Care Benefits			
	276 Self-Insurance Prescription Benefits			
	FUND TOTAL			
60 Internal Service Fund	No Self Insurance data to report			
	211 Medical Insurance			
	212 Dental Insurance			
	215 Eye Care Insurance			
	216 Prescription Insurance			
	271 Self-Insurance Medical Benefits			
	272 Self-Insurance Dental Benefits			
	275 Self-Insurance Eye Care Benefits			
	276 Self-Insurance Prescription Benefits			
	FUND TOTAL			
Total of All Funds		\$11,609,603.28	\$955,823.04	\$12,565,426.32

LEA : 104107903 Seneca Valley SD

Printed 11/21/2019 3:50:49 PM

Function	Special Education (Prior Year)	Nonspecial Education (Prior Year)	Total (Prior Year)	Special Education (Current Year)	Nonspecial Education (Current Year)	Total (Current Year)
2120 Guidance Services	352,958.73	2,000,099.44	2,353,058.17	401,936.27	2,277,638.89	2,679,575.16
2140 Psychological Services	78,576.54	794,496.13	873,072.67	95,677.29	967,403.76	1,063,081.05
2150 Speech Pathology and Audiology Services	4,133.06	23,420.69	27,553.75	3,761.08	2,801.42	6,562.50
2160 Social Work Services						
2260 Instruction and Curriculum Development Services	164,976.89	934,869.02	1,099,845.91	172,606.47	978,103.32	1,150,709.79
2350 Legal and Accounting Services	6,077.02	47,769.79	53,846.81	6,623.95	56,113.92	62,737.87
2420 Medical Services	5,563.49	12,383.26	17,946.75	4,539.62	10,104.32	14,643.94
2440 Nursing Services	339,827.17	756,389.51	1,096,216.68	360,146.24	801,615.83	1,161,762.07
2700 Student Transportation Services	1,324,556.43	6,392,406.67	7,716,963.10	1,517,877.02	7,051,398.53	8,569,275.55
Total	\$2,276,669.33	\$10,961,834.51	\$13,238,503.84	\$2,563,167.94	\$12,145,179.99	\$14,708,347.93

LEA : 104107903 Seneca Valley SD

Printed 11/21/2019 3:50:52 PM

(PRINCIPAL AMOUNTS ONLY)

GOVERNMENTAL FUNDS/ ACTIVITIES

	Short-Term Borrowing	General Obligation Bonds/Notes	Authority Building Obligations	Other Long-Term Debt	Other Post-Employment Benefits (OPEB)	Compensated Absences	Net Pension Liability	Total
1. Debt at Beginning of Fiscal Year		80,735,000.00			45,533,507.00	1,151,030.00	184,015,580.00	311,435,117.00
2. Additional Debt Incurred During Year		17,495,000.00			4,073,163.00	149,518.50		21,717,681.50
3. Retirements and Repayments		6,450,000.00			6,877,476.00	128,309.00		13,455,785.00
4. Debt at End of Fiscal Year		91,780,000.00			42,729,194.00	1,172,239.50	184,015,580.00	319,697,013.50
5. Accreted Interest at End Of Fiscal Year								
6. Total Debt and Accreted Interest		91,780,000.00			42,729,194.00	1,172,239.50	184,015,580.00	319,697,013.50
7. Current Portion P&I - Due within 1 year		9,997,674.00						9,997,674.00
8. Interest Paid during current fiscal year		3,550,553.00						3,550,553.00

(PRINCIPAL AMOUNTS ONLY)

PROPRIETARY FUNDS

	Short-Term Borrowing	General Obligation Bonds/Notes	Authority Building Obligations	Other Long-Term Debt	Other Post-Employment Benefits (OPEB)	Compensated Absences	Net Pension Liability	Total
1. Debt at Beginning of Fiscal Year							3,755,420.00	3,755,420.00
2. Additional Debt Incurred During Year								
3. Retirements and Repayments								
4. Debt at End of Fiscal Year							3,755,420.00	3,755,420.00
5. Accreted Interest at End Of Fiscal Year								
6. Total Debt and Accreted Interest							3,755,420.00	3,755,420.00
7. Current Portion P&I - Due within 1 year								
8. Interest Paid during current fiscal year								

Total Principal and Interest Payments Made by Your School - All Funds

Function	Fund		Principal (910)	Principal (920)	Interest (830)	Total (Principal +Interest)	Misc Other Uses (990)
5110	10	General Fund	6,450,000.00		3,550,551.24	10,000,551.24	
5110	20	Special Revenue Funds					
5110	30	Capital Projects Funds					
5110	40	Debt Service Fund					
5110	90	Permanent Fund					
5120	10	General Fund					
5120	20	Special Revenue Funds					
5120	30	Capital Projects Funds					
5120	40	Debt Service Fund					

Total Debt Payments - Governmental Funds			\$6,450,000.00		\$3,550,551.24	\$10,000,551.24	
---	--	--	-----------------------	--	-----------------------	------------------------	--

Function	Fund		Principal (910)	Principal (920)	Interest (830)	Total (Principal +Interest)
5110	50	Enterprise Fund				
5110	60	Internal Service Fund				
5120	50	Enterprise Fund				
5120	60	Internal Service Fund				

Total Debt Payments - Proprietary Funds						
--	--	--	--	--	--	--

Debt Details
Governmental Funds/ Activities

Debt Category	Debt Issue Date (MM/YYYY)	Principal Amounts Only			Debt at End of Fiscal Year	Current Portion Due Within One Year (Principal and Interest)	Interest Paid During Fiscal Year
		Debt at Beginning of Fiscal Year	Additions	Reductions / Repayments			
General Obligation Bonds/Notes – CIB	07/2018		17,495,000.00	545,000.00	16,950,000.00	1,125,950.00	584,994.00
General Obligation Bonds/Notes – CIB	11/2016	8,800,000.00		5,000.00	8,795,000.00	333,350.00	228,450.00
General Obligation Bonds/Notes – CIB	11/2016	5,155,000.00		655,000.00	4,500,000.00	1,886,850.00	131,500.00
General Obligation Bonds/Notes – CIB	05/2015	21,015,000.00		4,710,000.00	16,305,000.00	4,417,938.00	901,338.00
General Obligation Bonds/Notes – CIB	05/2015	1,960,000.00			1,960,000.00	98,000.00	98,000.00
General Obligation Bonds/Notes – CIB	05/2015	26,935,000.00			26,935,000.00	1,208,063.00	1,208,063.00
General Obligation Bonds/Notes – CIB	12/2014	9,985,000.00		5,000.00	9,980,000.00	258,600.00	253,723.00
General Obligation Bonds/Notes – CIB	10/2012	5,130,000.00		5,000.00	5,125,000.00	112,213.00	107,275.00
General Obligation Bonds/Notes – CIB	05/2012	695,000.00		170,000.00	525,000.00	181,570.00	14,970.00
General Obligation Bonds/Notes – CIB	05/2012	675,000.00		165,000.00	510,000.00	176,240.00	14,540.00
General Obligation Bonds/Notes – CIB	04/2012	385,000.00		190,000.00	195,000.00	198,900.00	7,700.00
Compensated Absences		1,151,030.00	149,518.50	128,309.00	1,172,239.50		
Other Post-Employment Benefits (OPEB)		45,533,507.00	4,073,163.00	6,877,476.00	42,729,194.00		
Net Pension Liability		184,015,580.00			184,015,580.00		
Totals for Debt Entered:		\$311,435,117.00	\$21,717,681.50	\$13,455,785.00	\$319,697,013.50	\$9,997,674.00	\$3,550,553.00

Bond Details
Proprietary Funds

Debt Category	Debt Issue Date (MM/YYYY)	Principal Amounts Only			Debt at End of Fiscal Year	Current Portion Due Within One Year (Principal and Interest)	Interest Paid During Fiscal Year
		Debt at Beginning of Fiscal Year	Additions	Reductions / Repayments			
Net Pension Liability		3,755,420.00			3,755,420.00		
Totals for Debt Entered:		\$3,755,420.00			\$3,755,420.00		

General Fund (10)

Section 1: Tuition/Purchased Services as Reported within Expenditure Detail

	Amount
Tuition Reported in General Fund Expenditures 1000-560	4,628,939.14
Purchased Services in General Fund Expenditures 1000-594 and 1000-597	

Section 1 Total	\$4,628,939.14
------------------------	-----------------------

Section 2: Tuition Paid to Institution Types During Fiscal Year

	Tuition Paid For Nonspecial Education	Tuition Paid For Special Education	Total
1 1306 Institutions	2,913.15	31,844.83	34,757.98
2 Institutionalized Children's Programs			
3 Juveniles Incarcerated in Adult Facilities			
4 Residential Treatment Facilities	16,380.93	1,456,588.61	1,472,969.54
5 Other Local Education Agencies			
6 Brick and Mortar Charter Schools	309,514.04	167,211.54	476,725.58
7 Cyber Charter Schools	682,476.45	76,529.52	759,005.97
8 Career and Technology Centers	559,387.25		559,387.25
9 Approved Private Schools		1,321,875.32	1,321,875.32
10 PA Chartered Schools for the Deaf and Blind			
11 Private Residential Rehabilitative Institutions	4,217.50		4,217.50
12 Juvenile Detention Centers			
13 Special Program Jointures			
14 Other Tuition Not Included Elsewhere In This Section			
Section 2 Total	\$1,574,889.32	\$3,054,049.82	\$4,628,939.14

LEA : 104107903 Seneca Valley SD

Printed 11/21/2019 3:50:59 PM

Food Service / Cafeteria Operations Fund (51)

3000 Operation of Non-Instructional Services

Total

100 Personnel Services – Salaries

100 Personnel Services – Salaries 1,011,361.60

Total Personnel Services – Salaries \$1,011,361.60

200 Personnel Services – Employee Benefits

210 Group Insurance – Contracted Provider 67,405.32

220 Social Security Contributions 76,163.15

230 PSERS Retirement Contributions 419,384.27

250 Unemployment Compensation 619.32

260 Workers' Compensation 2,286.58

Total Personnel Services – Employee Benefits \$565,858.64

300 Purchased Professional and Technical Services

329 Professional Educational Services – Other 9,974.84

Total Purchased Professional and Technical Services \$9,974.84

400 Purchased Property Services

420 Utility Services 21,326.66

430 Repairs and Maintenance Services 34,639.17

Total Purchased Property Services \$55,965.83

500 Other Purchased Services

530 Communications 458.30

540 Advertising 1,602.43

550 Printing and Binding 3,196.56

570 Food Service Management 907,553.15

580 Travel 1,452.50

Total Other Purchased Services \$914,262.94

600 Supplies

610 General Supplies 275,409.51

620 Energy 90,910.49

Total Supplies \$366,320.00

700 Property

740 Depreciation 44,946.00

Total Property \$44,946.00

800 Other Objects

810 Dues and Fees 3,942.02

Total Other Objects \$3,942.02

Total 3000 Operation of Non-Instructional Services \$2,972,631.87

Food Service / Cafeteria Operations Fund (51)

	<u>Elementary</u>	<u>Secondary</u>	<u>Federal</u>	<u>Total</u>
3100 Food Services				
100 Personnel Services – Salaries				
100 Personnel Services – Salaries				1,011,361.60
Total Personnel Services – Salaries				\$1,011,361.60
200 Personnel Services – Employee Benefits				
210 Group Insurance – Contracted Provider				67,405.32
220 Social Security Contributions				76,163.15
230 PSERS Retirement Contributions				419,384.27
250 Unemployment Compensation				619.32
260 Workers' Compensation				2,286.58
Total Personnel Services – Employee Benefits				\$565,858.64
300 Purchased Professional and Technical Services				
329 Professional Educational Services – Other				9,974.84
Total Purchased Professional and Technical Services				\$9,974.84
400 Purchased Property Services				
420 Utility Services				21,326.66
430 Repairs and Maintenance Services				34,639.17
Total Purchased Property Services				\$55,965.83
500 Other Purchased Services				
530 Communications				458.30
540 Advertising				1,602.43
550 Printing and Binding				3,196.56
570 Food Service Management				907,553.15
580 Travel				1,452.50
Total Other Purchased Services				\$914,262.94
600 Supplies				
610 General Supplies				275,409.51
620 Energy				90,910.49
Total Supplies				\$366,320.00
700 Property				
740 Depreciation				44,946.00
Total Property				\$44,946.00
800 Other Objects				
810 Dues and Fees				3,942.02
Total Other Objects				\$3,942.02
Total 3100 Food Services				\$2,972,631.87

	<u>Food Service(51)</u>	<u>Child Care Operations(52)</u>	<u>Other Enterprise(58)</u>	<u>Internal Service(60)</u>	<u>Total</u>
3000 <u>Operation of Non-Instructional Services</u>					
3100 Food Services	2,972,631.87				2,972,631.87
Total Operation of Non-Instructional Services	\$2,972,631.87				\$2,972,631.87
TOTAL ACTUAL EXPENDITURES & OTHER FINANCING USES	\$2,972,631.87				\$2,972,631.87

LEA : 104107903 Seneca Valley SD

Printed 11/21/2019 3:51:13 PM

Fund	School	School Number	Local Personnel	Local Nonpersonnel	State Personnel	State Nonpersonnel	Federal Personnel	Federal Nonpersonnel	Total	Explanation
10										
	Connoquenessing Valley El Sch	1178	5,942,370.86	1,340,464.02	2,346,610.67	529,342.12	259,087.19	5,256.51	10,423,131.37	
	Evans City El Sch	1180	4,667,749.55	1,033,855.26	1,843,269.49	408,263.95	213,170.23	4,172.13	8,170,480.61	
	Evans City MS	7488	4,237,484.81	885,901.36	1,673,360.23	349,837.74	205,873.59	3,567.93	7,356,025.66	
	Haine El Sch	4907	6,448,231.02	1,471,353.93	2,546,372.16	581,029.85	226,214.04	5,839.55	11,279,040.55	
	Haine MS	7489	5,190,377.58	1,089,141.01	2,049,652.52	430,096.00	108,802.74	4,400.81	8,872,470.66	
	Rowan El Sch	1179	4,240,650.87	960,480.62	1,674,610.49	379,288.69	87,670.96	3,546.08	7,346,247.71	
	Ryan Gloyer MS	5311	12,258,732.45	2,330,106.35	4,854,780.19	920,146.61	108,805.24	15,119.93	20,487,690.77	
	Seneca Valley HS	8318	22,238,916.23	4,838,272.89	8,768,157.93	1,910,608.25	220,532.49	30,645.92	38,007,133.71	
Total			65,224,513.37	13,949,575.44	25,756,813.68	5,508,613.21	1,430,156.48	72,548.86	111,942,221.04	