

LEA Name : Seneca Valley SD
Address : 124 Seneca School Rd
Harmony , PA 16037

County : Butler
AUN Number : 104107903
LEA Type : SD

Annual Financial Report Accuracy Certification Statement

For Fiscal Year Ending
6/30/2016

Pennsylvania Department of Education
&
Office of Comptroller Operations

PDE-2056: Intermediate Unit
PDE-2057: School District, AVTS/CTC, Charter School,
and Special Program Jointure

CERTIFICATION: By signing this page I agree that the electronic data submitted is a complete and accurate statement of the financial operations and status of the local education agency for the fiscal year. It has been prepared in accordance with generally accepted accounting principles and established Commonwealth of PA reporting guidelines.



Chief School Administrator Signature

Date 10/31/16



Board Secretary Signature

Date 10/31/16

Celeste R Foley

Contact Person

foleycr@svsd.net

Contact Person E-mail Address

(724)452-6040

Ext :1622

Contact Person Telephone Number

Contact Person Fax Number

Audit Certification
Annual Financial Report:
For Fiscal Year Ending **6/30/2016**
(Pursuant to PA School Code Section 218(b))

LEA Name : Seneca Valley SD
AUN Number : 104107903
County : Butler

Audit Certification Due: 12/31/2016

This certification is applicable to:

- Orig. Annual Financial Report submitted to
Comptroller Operations: 10/31/2016
Date
- Annual Financial Report revisions submitted on: _____
Date

Auditing Firm: Mark C. Turnley, CPA
1000 3rd Ave
New Brighton, PA 15066

Auditor Contact Name: Mark C. Turnley, CPA
Auditor Phone: (724) 384-1081
Auditor E-mail: mark@mcturnleycpa.com

CERTIFICATION: By signing this page I agree that the financial statements of the school have been properly audited as noted above pursuant to Article XXIV, and in the auditor's professional opinion, the Annual Financial Report (PDE-2057) submitted on the date referenced is materially consistent with the audited financial statements.

Chief School Administrator

 11-1-16
Signature Date

Board Secretary

 11-1-16
Signature Date

Celeste R Foley

Contact Person

foleycr@svsd.net

Contact Person E-mail Address

(724)452-6040

Ext :1622

Contact Person Telephone Number

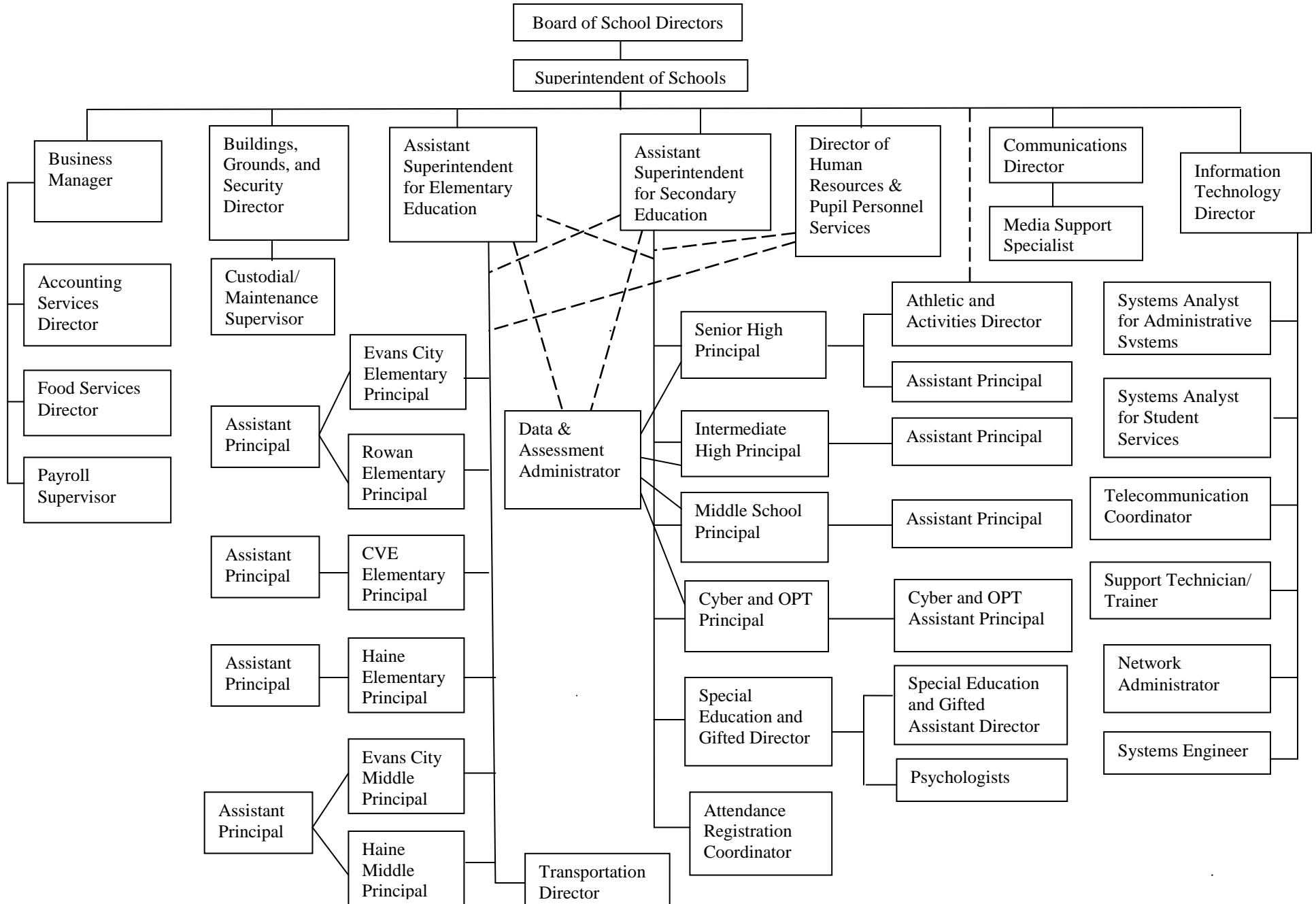
724-452-6105

Contact Person Fax Number

SENECA VALLEY SCHOOL DISTRICT

No. 008

SECTION: LOCAL BOARD PROCEDURES
 TITLE: ORGANIZATION CHART
 ADOPTED:
 REVISED: October 20, 2014



<u>Val Number</u>	<u>Description</u>	<u>Justification</u>
16230	<p>REP Fund 51 – Net Position - Beginning of Fiscal Year must equal Prior Year AFR, Net Position - End of Year. Justifications to this error must fully explain the situation that prompted a fund balance restatement. "Auditor Adjustment" is not a sufficient justification.</p> <p>REP Fund 51 – Net Position - Beginning of Fiscal Year: \$-1,224,323.00 REP Fund 51, Prior Year AFR, Net Position - End of Year: \$1,570,121.00</p>	<p>Prior period adjustment represents the apportionment of the newly required GASB 68 net pension liability, deferred outflow, and deferred inflows to the Enterprise Fund.</p>
42420	<p>Expenditure Detail: Total current year 2700-513 expenditure varies from prior year by 10%. Correct the data or enter a justification.</p> <p>2700-513, AFR Exp Detail: \$6,929,107.75 2700-513, PY AFR Amount: \$6,197,340.54</p>	<p>State mandated transportation to a new parochial school.</p>

Amounts Expressed in Whole Dollars

	<u>General Fund</u> <u>(10)</u>	<u>Public Purpose Trust</u> <u>(27)</u>	<u>Other Compt Approved</u> <u>(28)</u>	<u>Athletic / Activity</u> <u>(29)</u>	<u>Capital Reserve (690.</u> <u>1850)</u> <u>(31)</u>
Assets And Deferred Outflows Of Resources					
Assets					
0100 Cash and Cash Equivalents	7,166,262				
0110 Investments	27,272,628				
0120 Taxes Receivable	299,945				
0130 Due From Other Funds	99,632				
0141 Due From Other Governments	2,542,533				
0142 State Revenue Receivable	2,978,969				
0143 Federal Revenue Receivable	9,032				
0145 Other Intergovernmental Revenue Receivable					
0146 Due from Primary Government					
0147 Due from Component Unit					
0150 Other Receivables	126,990				
0170 Inventories					
0180 Prepaid Expenses (Expenditures)					
0190 Other Current Assets					
Total Assets	\$40,495,991				
0910 Deferred Outflows of Resources					
Total Assets And Deferred Outflows Of Resources	\$40,495,991				

Amounts Expressed in Whole Dollars

	<u>Capital Reserve (1431)</u> <u>(32)</u>	<u>Other Capital Projects</u> <u>Fund</u> <u>(39)</u>	<u>Debt Service</u> <u>(40)</u>	<u>Permanent</u> <u>(90)</u>	<u>Total Governmental</u> <u>Funds</u>
Assets And Deferred Outflows Of Resources					
Assets					
0100 Cash and Cash Equivalents		7,042,121			14,208,383
0110 Investments		37,045,312			64,317,940
0120 Taxes Receivable					299,945
0130 Due From Other Funds					99,632
0141 Due From Other Governments					2,542,533
0142 State Revenue Receivable					2,978,969
0143 Federal Revenue Receivable					9,032
0145 Other Intergovernmental Revenue Receivable					
0146 Due from Primary Government					
0147 Due from Component Unit					
0150 Other Receivables					126,990
0170 Inventories					
0180 Prepaid Expenses (Expenditures)					
0190 Other Current Assets					
Total Assets		\$44,087,433			\$84,583,424
0910 Deferred Outflows of Resources					
Total Assets And Deferred Outflows Of Resources		\$44,087,433			\$84,583,424

Amounts Expressed in Whole Dollars

	<u>General Fund</u> <u>(10)</u>	<u>Public Purpose Trust</u> <u>(27)</u>	<u>Other Compt Approved</u> <u>(28)</u>	<u>Athletic / Activity</u> <u>(29)</u>	<u>Capital Reserve (690.</u> <u>1850)</u> <u>(31)</u>
Liabilities And Deferred Inflows Of Resources And Fund Balances					
Liabilities					
0400 Due to Other Funds	163,370				
0411 Due to Other Governments					
0412 Due to Primary Government					
0413 Due to Component Unit					
0420 Accounts Payable	1,968,511				
0430 Contracts Payable					
0440 Current Portion of Long-Term Debt					
0450 Short-Term Payables					
0461 Accrued Salaries and Benefits	11,250,560				
0462 Payroll Deductions and Withholding	468,605				
0480 Unearned Revenues	31,919				
0490 Other Current Liabilities	8,820				
Total Liabilities	\$13,891,785				
0950 Deferred Inflows of Resources					
Fund Balances					
0810 Nonspendable Fund Balance					
0820 Restricted Fund Balance	197,709				
0830 Committed Fund Balance	4,500,000				
0840 Assigned Fund Balance	13,306,497				
0850 Unassigned Fund Balance	8,600,000				
Total Fund Balances	\$26,604,206				
Total Liabilities, Deferred Inflows Of Resources And Fund Balances	\$40,495,991				

Amounts Expressed in Whole Dollars

	<u>Capital Reserve (1431)</u> <u>(32)</u>	<u>Other Capital Projects</u> <u>Fund</u> <u>(39)</u>	<u>Debt Service</u> <u>(40)</u>	<u>Permanent</u> <u>(90)</u>	<u>Total Governmental</u> <u>Funds</u>
Liabilities And Deferred Inflows Of Resources And Fund Balances					
Liabilities					
0400 Due to Other Funds					163,370
0411 Due to Other Governments					
0412 Due to Primary Government					
0413 Due to Component Unit					
0420 Accounts Payable		2,766,277			4,734,788
0430 Contracts Payable					
0440 Current Portion of Long-Term Debt					
0450 Short-Term Payables					
0461 Accrued Salaries and Benefits					11,250,560
0462 Payroll Deductions and Withholding					468,605
0480 Unearned Revenues					31,919
0490 Other Current Liabilities					8,820
Total Liabilities		\$2,766,277			\$16,658,062
0950 Deferred Inflows of Resources					
Fund Balances					
0810 Nonspendable Fund Balance					
0820 Restricted Fund Balance		7,042,121			7,239,830
0830 Committed Fund Balance					4,500,000
0840 Assigned Fund Balance		34,279,035			47,585,532
0850 Unassigned Fund Balance					8,600,000
Total Fund Balances		\$41,321,156			\$67,925,362
Total Liabilities, Deferred Inflows Of Resources And Fund Balances		\$44,087,433			\$84,583,424

Amounts Expressed in Whole Dollars	<u>General Fund</u> <u>(10)</u>	<u>Public Purpose Trust</u> <u>(27)</u>	<u>Other Compt Approved</u> <u>(28)</u>	<u>Athletic / Activity</u> <u>(29)</u>	<u>Capital Reserve (690.</u> <u>1850)</u> <u>(31)</u>
Revenues					
6000 Revenue from Local Sources	82,789,512				
7000 Revenue from State Sources	30,878,361				
8000 Revenue from Federal Sources	322,014				
Total Revenues	\$113,989,887				
Expenditures					
1000 Instruction	69,098,708				
2000 Support Services	30,107,055				
3000 Operation of Non-Instructional Services	1,930,742				
4000 Facilities Acquisition, Construction and Improvement Services	14,161				
5110 Debt Service	9,797,516				
5130 Refund of Prior Year Revenues / Receipts	5,045				
5140 Short-Term Borrowing – Interest and Costs					
Total Expenditures	\$110,953,227				
Excess (Deficiency) Of Revenues Over Expenditures	\$3,036,660				
Other Financing Sources (Uses)					
9110 Face Value of Bonds Issued					
9120 Proceeds from Refunding of Bonds					
9130 Bond Premiums					
9200 Proceeds from Extended-Term Financing					
9300 Interfund Transfers - IN					
9400 Sale of or Compensation for Loss of Fixed Assets					
9710 Transfers from Component Units					
9720 Transfers from Primary Governments					
9910 Other Financing Sources Not Listed in the 9000 Series					
9990 Insurance Recoveries					
5120 Debt Service – Refunded Bonds					
5150 Bond Discounts					
5200 Interfund Transfers – Out					
5300 Transfers Out to Component Units/Primary Governments					
Total Other Financing Sources (Uses)					

Amounts Expressed in Whole Dollars	<u>Capital Reserve (1431)</u> <u>(32)</u>	<u>Other Capital Projects</u> <u>Fund</u> <u>(39)</u>	<u>Debt Service</u> <u>(40)</u>	<u>Permanent</u> <u>(90)</u>	<u>Total Governmental</u> <u>Funds</u>
Revenues					
6000 Revenue from Local Sources		117,697			82,907,209
7000 Revenue from State Sources					30,878,361
8000 Revenue from Federal Sources					322,014
Total Revenues		\$117,697			\$114,107,584
Expenditures					
1000 Instruction					69,098,708
2000 Support Services					30,107,055
3000 Operation of Non-Instructional Services					1,930,742
4000 Facilities Acquisition, Construction and Improvement Services		7,663,424			7,677,585
5110 Debt Service					9,797,516
5130 Refund of Prior Year Revenues / Receipts					5,045
5140 Short-Term Borrowing – Interest and Costs					
Total Expenditures		\$7,663,424			\$118,616,651
Excess (Deficiency) Of Revenues Over Expenditures		(\$7,545,727)			(\$4,509,067)
Other Financing Sources (Uses)					
9110 Face Value of Bonds Issued					
9120 Proceeds from Refunding of Bonds					
9130 Bond Premiums					
9200 Proceeds from Extended-Term Financing					
9300 Interfund Transfers - IN					
9400 Sale of or Compensation for Loss of Fixed Assets					
9710 Transfers from Component Units					
9720 Transfers from Primary Governments					
9910 Other Financing Sources Not Listed in the 9000 Series					
9990 Insurance Recoveries					
5120 Debt Service – Refunded Bonds					
5150 Bond Discounts					
5200 Interfund Transfers – Out					
5300 Transfers Out to Component Units/Primary Governments					
Total Other Financing Sources (Uses)					

Amounts Expressed in Whole Dollars	<u>General Fund</u> <u>(10)</u>	<u>Public Purpose Trust</u> <u>(27)</u>	<u>Other Compt Approved</u> <u>(28)</u>	<u>Athletic / Activity</u> <u>(29)</u>	<u>Capital Reserve</u> (690. <u>1850)</u> <u>(31)</u>
Special And Extraordinary Items					
9920 Special Items – Gains					
9930 Extraordinary Items – Gains					
5520 Special Items – Losses					
5530 Extraordinary Items – Losses					
Net Change In Fund Balances	\$3,036,660				
Fund Balance					
0001 Fund Balance - Beginning of Fiscal Year	23,567,546				
Fund Balance - End Of Year	\$26,604,206				

Amounts Expressed in Whole Dollars	<u>Capital Reserve (1431)</u> <u>(32)</u>	<u>Other Capital Projects</u> <u>Fund</u> <u>(39)</u>	<u>Debt Service</u> <u>(40)</u>	<u>Permanent</u> <u>(90)</u>	<u>Total Governmental</u> <u>Funds</u>
Special And Extraordinary Items					
9920 Special Items – Gains					
9930 Extraordinary Items – Gains					
5520 Special Items – Losses					
5530 Extraordinary Items – Losses					
Net Change In Fund Balances		(\$7,545,727)			(\$4,509,067)
Fund Balance					
0001 Fund Balance - Beginning of Fiscal Year		48,866,883			72,434,429
Fund Balance - End Of Year		\$41,321,156			\$67,925,362

Amounts Expressed in Whole Dollars	<u>Food Service</u> <u>(51)</u>	<u>Child Care</u> <u>Operations</u> <u>(52)</u>	<u>Other Enterprise</u> <u>(58)</u>	<u>TOTAL</u>	<u>Internal Service</u> <u>(60)</u>
Assets And Deferred Outflows Of Resources					
Current Assets					
0100 Cash and Cash Equivalents	1,440,088			1,440,088	
0110 Investments					
0130 Due From Other Funds	163,370			163,370	
0141 Due From Other Governments	7,542			7,542	
0142 State Revenue Receivable					
0143 Federal Revenue Receivable					
0146 Due from Primary Government					
0147 Due from Component Unit					
0150 Other Receivables	7,455			7,455	
0170 Inventories	68,796			68,796	
0180 Prepaid Expenses (Expenditures)					
0190 Other Current Assets					
Total Current Assets	\$1,687,251			\$1,687,251	
Noncurrent Assets					
0211 Land					
0212 Site Improvements (Net)					
0220 Buildings and Building Improvements (Net)					
0230 Machinery, Equipment and Furniture (Net)	235,512			235,512	
0250 Construction in Progress					
0260 Long Term Prepayments					
0290 Other Noncurrent Assets					
Total Noncurrent Assets	\$235,512			\$235,512	
0910 Deferred Outflows of Resources	337,617			337,617	
Total Assets And Deferred Outflows Of Resources	\$2,260,380			\$2,260,380	

Amounts Expressed in Whole Dollars	<u>Food Service</u> <u>(51)</u>	<u>Child Care</u> <u>Operations</u> <u>(52)</u>	<u>Other Enterprise</u> <u>(58)</u>	<u>TOTAL</u>	<u>Internal Service</u> <u>(60)</u>
Liabilities And Deferred Inflows Of Resources And Net Position					
Current Liabilities					
0400 Due to Other Funds	99,632			99,632	
0411 Due to Other Governments					
0413 Due to Component Unit					
0420 Accounts Payable	72,265			72,265	
0430 Contracts Payable					
0440 Current Portion of Long-Term Debt					
0450 Short-Term Payables					
0461 Accrued Salaries and Benefits					
0462 Payroll Deductions and Withholding					
0480 Unearned Revenues	35,687			35,687	
0490 Other Current Liabilities					
Total Current Liabilities	\$207,584			\$207,584	
Noncurrent Liabilities					
0510 Bonds Payable					
0520 Extended-Term Financing Agreements Payable					
0530 Lease-Purchase Obligations					
0540 Accumulated Compensated Absences	2,131			2,131	
0550 Authority Lease Obligations					
0560 Other Post-Employment Benefits (OPEB)					
0570 Net Pension Liability	3,195,800			3,195,800	
0599 Other Long-Term Liabilities					
Total Noncurrent Liabilities	\$3,197,931			\$3,197,931	
Total Liabilities	\$3,405,515			\$3,405,515	
0950 Deferred Inflows of Resources	19,640			19,640	
Net Position					
0791 Invested in Capital Assets, Net of Related Debt	235,512			235,512	
0008 Restricted Net Position (0792 – 0798)					
0799 Unrestricted Net Position	(1,400,287)			(1,400,287)	
Total Net Position	(\$1,164,775)			(\$1,164,775)	
Total Liabilities And Deferred Inflows Of Resources And Net Position	\$2,260,380			\$2,260,380	

Amounts Expressed in Whole Dollars	<u>Food Service</u> <u>(51)</u>	<u>Child Care Operations</u> <u>(52)</u>	<u>Other Enterprise</u> <u>(58)</u>	<u>TOTAL</u>	<u>Internal Service</u> <u>(60)</u>
Operating Revenues					
6600 Food Service Revenue	1,821,434			1,821,434	
0071 Charges for Services					
0072 Other Operating Revenue					
Total Operating Revenues	\$1,821,434			\$1,821,434	
Operating Expenses					
100 Personnel Services – Salaries	953,335			953,335	
200 Personnel Services – Employee Benefits	463,254			463,254	
300 Purchased Professional and Technical Services	1,183			1,183	
400 Purchased Property Services	120,168			120,168	
500 Other Purchased Services	4,891			4,891	
600 Supplies	1,178,330			1,178,330	
740 Depreciation	90,426			90,426	
810 Dues and Fees	995			995	
890 Miscellaneous Expenditures					
Total Operating Expenses	\$2,812,582			\$2,812,582	
Operating Income (Loss)	(\$991,148)			(\$991,148)	
Non Operating Revenues (Expenses)					
6500 Earnings on Investments	1,030			1,030	
6920 Contributions and Donations from Private Sources					
6930 Gains or Losses on Sale of Fixed Assets	4,300			4,300	
6991 Refunds of a Prior Year Expenditure					
7000 Revenue from State Sources	225,130			225,130	
8000 Revenue from Federal Sources	820,236			820,236	
820 Claims and Judgments Against the LEA					
830 Interest					
TOTAL Non Operating Revenues (Expenses)	\$1,050,696			\$1,050,696	
Income (Loss) Before Contributions And Transfers	\$59,548			\$59,548	

Amounts Expressed in Whole Dollars	<u>Food Service</u> <u>(51)</u>	<u>Child Care Operations</u> <u>(52)</u>	<u>Other Enterprise</u> <u>(58)</u>	<u>TOTAL</u>	<u>Internal Service</u> <u>(60)</u>
Contributions, Transfers, and Special and Extraordinary Items					
5200 Interfund Transfers – Out					
5300 Transfers Out to Component Units/Primary Governments					
5520 Special Items – Losses					
5530 Extraordinary Items – Losses					
9300 Interfund Transfers - IN					
9500 Capital Contributions					
9700 Transfers IN From Component Units/Primary Governments					
9920 Special Items – Gains					
9930 Extraordinary Items – Gains					
Change In Net Position	\$59,548			\$59,548	
0002 Net Position - Beginning of Fiscal Year	(1,224,323)			(1,224,323)	
0003 Accounting Changes / Residual Equity Transfers					
Net Position - End Of Year	(\$1,164,775)			(\$1,164,775)	

Amounts Expressed in Whole Dollars	<u>Food Service</u> <u>(51)</u>	<u>Child Care Operations</u> <u>(52)</u>	<u>Other Enterprise</u> <u>(58)</u>	<u>TOTAL</u>	<u>Internal Service(60)</u>
Cash Flows From Operating Activities					
0011 Cash Receipts From Users	1,813,845			1,813,845	
0012 Cash Receipts From Assessments Made to Other Funds					
0013 Cash Receipts From Earnings on Investments					
0014 Cash Receipts From Other Operating Revenue					
0015 Cash Payments To Employees For Services	1,343,130			1,343,130	
0016 Cash Payments For Insurance Claims					
0017 Cash Payments To Suppliers For Goods and Services	1,156,540			1,156,540	
0018 Cash Payments For Other Operating Expenses					
Net Cash Provided By (Used For) Operating Activities	(\$685,825)			(\$685,825)	
Cash Flows From Non-Capital Financing Activities					
0021 Receipts From Local Sources - 6000					
0022 Receipts From State Sources - 7000	233,555			233,555	
0023 Receipts From Federal Sources -8000	669,738			669,738	
0024 Notes and Loans Received (Repaid)					
0025 Interest Paid on Notes/Loans - 5100-830					
0026 Operating Transfers In (Out)/Residual Equity Trans					
0027 Operating Transfers In (Out) Primary Government / Comp Unit					
0028 Receipts From Refund of Prior Year Expenditures - 6991					
0029 Special and Extraordinary Gains (losses)					
Net Cash Prov By (Used for) Non-Capital Financing Activities	\$903,293			\$903,293	
Cash Flows From Capital and Related Financing Activities					
0031 Payments For Fac Acq, Const, and Imp - 4000	(82,758)			(82,758)	
0032 Gain / (Loss) on Sale of Fixed Assets - 6930	4,300			4,300	
0033 Proceeds From Extended Term Financing - 9200					
0034 Principal Paid on Financing Agreements					
0035 Interest Paid on Financing Agreements - 5100-830					
0036 (Inc) Dec in Contributed Capital					
Net Cash Prov By (Used for) Capital and Related Financing Activities	(\$78,458)			(\$78,458)	
Cash Flows From Investing Activities					
0041 Earnings on Investments - 6500	1,030			1,030	
0042 Purchase of Inv Securities / Deposits to Inv Pools					
0043 Receipts From Investment Pool Withdrawals					
0044 Proceeds from Sale and Maturity of Inv Securities					
0045 Loans Received (Paid)					
Net Cash Prov By (Used for) Investing Activities	\$1,030			\$1,030	

	<u>Food Service</u> <u>(51)</u>	<u>Child Care Operations</u> <u>(52)</u>	<u>Other Enterprise</u> <u>(58)</u>	<u>TOTAL</u>	<u>Internal Service</u> <u>(60)</u>
Net Increase (Decrease) in Cash Flows	140,040			140,040	
0004 Cash and Cash Equivalents Beginning of Year	1,300,048			1,300,048	
Cash and Cash Equivalents at Year End	\$1,440,088			\$1,440,088	
Reconciliation of Operating Income (Loss) To Net Cash Provided by (Used For) Operating Activities					
0005 Operating Income (Loss) per REP	(991,148)			(991,148)	
Adjustments					
0051 Depreciation and Net Amortization	260,822			260,822	
0052 Provision for Uncollectible Accounts					
0053 Other Adjustments	83,379			83,379	
Effect of Changes in Assets, Liabilities, Deferred Outflows and Deferred Inflows					
0054 (Inc) Dec In Accounts Receivable (0120-0150)	(5,866)			(5,866)	
0055 Advances to Other Funds (0160)	(20,597)			(20,597)	
0056 (Inc) Dec in Inventories (0170)	(13,886)			(13,886)	
0057 (Inc) Dec in Prepaid Expenses (0180)					
0058 (Inc) Dec in Other Current or Noncurrent Assets					
0064 Deferred Outflows (0910)					
0059 Inc (Dec) in Accounts Payable (0400-0450)					
0060 Inc (Dec) in Accrued Salaries/Benefits (0461)					
0065 Inc (Dec) in Net Pension Liabilities (0570)					
0066 Inc (Dec) in Other Postemp Benefit Oblig (0560)					
0061 Inc (Dec) in Payroll Deductions/Withholding (0462)	(11,799)			(11,799)	
0062 Inc (Dec) in Unearned Revenue (0480)	12,776			12,776	
0063 Inc (Dec) in Other Current or Noncurrent Liabilities	494			494	
0067 Deferred Inflows (0950)					
Total Adjustments	\$305,323			\$305,323	
Cash Provided By (Used for) Total	(\$685,825)			(\$685,825)	

COMBINED STATEMENT OF CASH FLOWS
SCHEDULE OF NONCASH INVESTING, CAPITAL, AND FINANCING ACTIVITIES

Explanation of Transaction and Balance Sheet Effect	Amount
The District received food commodities from the US Dept of Agriculture	218,487
Total	\$218,487

LEA : 104107903 Seneca Valley SD

Printed 4/28/2017 11:48:33 AM

Amounts Expressed in Whole Dollars

	<u>Private Purpose Trust</u> (71)	<u>Investment Trust</u> (72)	<u>Pension Trust</u> (73)	<u>Activity</u> (81)
Assets And Deferred Outflows Of Resources				
Assets				
0100 Cash and Cash Equivalents	114,638			278,393
0110 Investments				
0130 Due From Other Funds				
0147 Due from Component Unit				
0150 Other Receivables				
0170 Inventories				
0180 Prepaid Expenses (Expenditures)				
0190 Other Current Assets				
0220 Buildings and Building Improvements (Net)				
0230 Machinery, Equipment and Furniture (Net)				
Total Assets	\$114,638			\$278,393
0910 Deferred Outflows of Resources				
Total Assets And Deferred Outflows Of Resources	\$114,638			\$278,393

LEA : 104107903 Seneca Valley SD

Printed 4/28/2017 11:48:33 AM

Amounts Expressed in Whole Dollars

	<u>Other Agency</u> <u>(89)</u>	<u>Discrete Component Units</u> <u>(98)</u>	<u>Discrete Component Units</u> <u>(99)</u>	<u>Total Fiduciary Funds</u>
Assets And Deferred Outflows Of Resources				
Assets				
0100 Cash and Cash Equivalents				393,031
0110 Investments				
0130 Due From Other Funds				
0147 Due from Component Unit				
0150 Other Receivables				
0170 Inventories				
0180 Prepaid Expenses (Expenditures)				
0190 Other Current Assets				
0220 Buildings and Building Improvements (Net)				
0230 Machinery, Equipment and Furniture (Net)				
Total Assets				\$393,031
0910 Deferred Outflows of Resources				
Total Assets And Deferred Outflows Of Resources				\$393,031

LEA : 104107903 Seneca Valley SD

Printed 4/28/2017 11:48:33 AM

Amounts Expressed in Whole Dollars

Private Purpose Trust
(71)

Investment Trust
(72)

Pension Trust
(73)

Activity
(81)

Liabilities, Deferred Inflows Of Resources And Net Position

Liabilities

0400 Due to Other Funds				
0411 Due to Other Governments				
0412 Due to Primary Government				
0413 Due to Component Unit				
0420 Accounts Payable				
0430 Contracts Payable				
0450 Short-Term Payables				
0461 Accrued Salaries and Benefits				
0462 Payroll Deductions and Withholding				
0480 Unearned Revenues				
0490 Other Current Liabilities				278,393

Total Liabilities **\$278,393**

0950 Deferred Inflows of Resources

Net Position

0791 Invested in Capital Assets, Net of Related Debt	
0009 Restricted Net Position (0792 – 0798)	
0799 Unrestricted Net Position	114,638

Total Net Position **\$114,638**

Total Liabilities, Deferred Inflows Of Resources And Net Position **\$278,393**

LEA : 104107903 Seneca Valley SD

Printed 4/28/2017 11:48:33 AM

Amounts Expressed in Whole Dollars

<u>Other Agency</u>	<u>Discrete Component Units</u>	<u>Discrete Component Units</u>	<u>Total Fiduciary Funds</u>
(89)	(98)	(99)	

Liabilities, Deferred Inflows Of Resources And Net Position

Liabilities

0400 Due to Other Funds			
0411 Due to Other Governments			
0412 Due to Primary Government			
0413 Due to Component Unit			
0420 Accounts Payable			
0430 Contracts Payable			
0450 Short-Term Payables			
0461 Accrued Salaries and Benefits			
0462 Payroll Deductions and Withholding			
0480 Unearned Revenues			
0490 Other Current Liabilities			278,393

Total Liabilities **\$278,393**

0950 Deferred Inflows of Resources

Net Position

0791 Invested in Capital Assets, Net of Related Debt			
0009 Restricted Net Position (0792 – 0798)			
0799 Unrestricted Net Position			114,638

Total Net Position **\$114,638**

Total Liabilities, Deferred Inflows Of Resources And Net Position **\$393,031**

Amounts Expressed in Whole Dollars	<u>Private Purpose Trust</u> (71)	<u>Investment Trust</u> (72)	<u>Pension Trust</u> (73)	<u>Discrete Component</u> <u>Units</u> (98)	<u>Discrete Component</u> <u>Units</u> (99)	<u>Total Fiduciary</u> <u>Funds</u>
Additions						
0091 Gifts and Contributions						
0092 Other Additions	1					1
Deductions						
0093 Scholarships Awarded	100					100
0094 Other Deductions	10,770					10,770
Change In Net Position	(\$10,869)					(\$10,869)
0006 Net Position – Beginning of Fiscal Year	125,507					125,507
0007 Net Position Held in Trust for Pension Benefits						
Net Position - End of Fiscal Year	\$114,638					\$114,638

	<u>Revenue Reported In Current Year</u>	<u>Current Year Tax Accrual</u>	<u>Prior Year Tax Accrual</u>	<u>Taxes Collected In Current Year</u>
<u>Revenue from Local Sources</u>				
6111 Current Real Estate Taxes	64,791,316.10			64,791,316.10
6112 Interim Real Estate Taxes	679,499.71			679,499.71
6113 Public Utility Realty Taxes	83,631.84			83,631.84
6114 Payments in Lieu of Current Taxes - State / Local	233,045.08			233,045.08
6149 Current Act 511 Taxes, Other Flat Rate Assessments	139,920.59			139,920.59
6151 Current Act 511 Earned Income Taxes	9,672,536.41			9,672,536.41
6153 Current Act 511 Real Estate Transfer Taxes	1,983,236.35			1,983,236.35
6411 Delinquent Real Estate Taxes	744,126.32			744,126.32
6431 Delinquent Act 1 Earned Income Taxes	267,355.87			267,355.87
6440 Delinquent Local Enabling Taxes - Flat Rate Assessments	42,156.83			42,156.83
6500 Earnings on Investments	92,901.84			
6700 Revenues from LEA Activities	431,533.74			
6831 Federal Revenue Received from Other Pennsylvania Public LEAs	499,611.00			
6832 Federal IDEA Revenue Received as Pass Through	1,327,681.00			
6910 Rentals	87,251.68			
6942 Summer School Tuition	92,063.50			
6944 Receipts from Other LEAs in Pennsylvania - Education	1,354,955.00			
6991 Refunds of a Prior Year Expenditure	104,500.45			
6999 Other Revenues Not Specified Above	162,188.91			
TOTAL Revenue from Local Sources	\$82,789,512.22			\$78,636,825.10

**Revenue Reported
In Current Year**

Revenue from State Sources

7110 Basic Education Funding	13,516,082.69		
7160 Tuition for Orphans Subsidy	105,754.01		
7271 Special Education funds for School-Aged Pupils	3,586,077.01		
7311 Pupil Transportation Subsidy	3,473,355.93		
7330 Health Services (Medical, Dental, Nurse, Act 25)	153,556.91		
7340 State Property Tax Reduction Allocation	1,215,754.99		
7360 Safe Schools	39,629.68		
7505 Ready to Learn Block Grant	684,267.00		
7810 State Share of Social Security and Medicare Taxes	1,823,849.97		
7820 State Share of Retirement Contributions	6,280,033.07		
TOTAL Revenue from State Sources	\$30,878,361.26		

**Revenue Reported
In Current Year**

Revenue from Federal Sources

8190 Other Unrestricted Federal Grants-in-Aid Direct from the Federal Government	68,231.57		
8810 School-Based Access Medicaid Reimbursement Program (SBAP) Reimbursements (Access)	249,331.72		
8820 Medical Assistance Reimbursement for Administrative Claiming (Quarterly) Program	4,450.84		
TOTAL Revenue from Federal Sources	\$322,014.13		
TOTAL FROM ALL SOURCES	\$113,989,887.61		\$78,636,825.10

Revenue from Local Sources	82,789,512.22
Revenue from State Sources	30,878,361.26
Revenue from Federal Sources	322,014.13
Other Financing Sources	
TOTAL FROM ALL SOURCES	\$113,989,887.61

General Fund (10)

	<u>Total</u>
1000 Instruction	
100 Personnel Services – Salaries	
100 Personnel Services – Salaries	38,467,178.06
Total Personnel Services – Salaries	\$38,467,178.06
200 Personnel Services – Employee Benefits	
210 Group Insurance – Contracted Provider	9,262,252.65
220 Social Security Contributions	2,904,485.43
230 PSERS Retirement Contributions	9,790,530.10
240 Tuition Reimbursement	111,797.50
250 Unemployment Compensation	19,944.15
260 Workers' Compensation	191,413.72
Total Personnel Services – Employee Benefits	\$22,280,423.55
300 Purchased Professional and Technical Services	
322 Professional Educational Services – Ius	1,149,323.50
324 Professional Educational Services – Employee Training and Development Services	48,043.38
329 Professional Educational Services – Other	387,250.23
330 Other Professional Services	306,763.13
390 Other Purchased Professional and Technical Services	1,950.00
Total Purchased Professional and Technical Services	\$1,893,330.24
400 Purchased Property Services	
430 Repairs and Maintenance Services	48,847.26
440 Rentals	378,096.11
Total Purchased Property Services	\$426,943.37
500 Other Purchased Services	
510 Student Transportation Services	18,594.14
561 Tuition To Other School Districts Within the State	98,680.76
562 Tuition To Pennsylvania Charter Schools	1,389,593.73
563 Tuition To Nonpublic Schools	426,319.36
564 Tuition To Career and Technology Centers	580,104.95
567 Tuition To Approved Private Schools (APS) and PA Chartered Schools for the Deaf and Blind	1,218,292.52
568 Tuition To Private Residential Rehabilitative Institutions (PRRI) [In-State] and Detention Centers	1,500.72
580 Travel	15,649.67
Total Other Purchased Services	\$3,748,735.85
600 Supplies	
610 General Supplies	516,317.29
620 Energy	1,471.17
640 Books and Periodicals	1,677,954.67
Total Supplies	\$2,195,743.13
700 Property	
750 Equipment – Original and Additional	78,007.45
760 Equipment – Replacement	4,100.36
Total Property	\$82,107.81

LEA : 104107903 Seneca Valley SD

Printed 4/28/2017 11:48:37 AM

General Fund (10)

1000 Instruction

Total

800 Other Objects

810 Dues and Fees

4,246.10

Total Other Objects

\$4,246.10

Total 1000 Instruction

\$69,098,708.11

General Fund (10)

1100 Regular Programs – Elementary / Secondary

	<u>Elementary</u>	<u>Secondary</u>	<u>Federal</u>	<u>Total</u>
100 Personnel Services – Salaries				
100 Personnel Services – Salaries	14,184,176.86	13,981,354.81	225,530.07	28,391,061.74
Total Personnel Services – Salaries	\$14,184,176.86	\$13,981,354.81	\$225,530.07	\$28,391,061.74
200 Personnel Services – Employee Benefits				
210 Group Insurance – Contracted Provider	3,541,428.79	3,424,275.18	77,744.60	7,043,448.57
220 Social Security Contributions	1,077,879.34	1,057,132.58	11,052.12	2,146,064.04
230 PSERS Retirement Contributions	3,628,436.41	3,547,356.34	37,331.58	7,213,124.33
240 Tuition Reimbursement	53,603.50	58,194.00		111,797.50
250 Unemployment Compensation	7,622.87	1,487.96	257.48	9,368.31
260 Workers' Compensation	68,629.66	70,020.23	1,734.15	140,384.04
Total Personnel Services – Employee Benefits	\$8,377,600.57	\$8,158,466.29	\$128,119.93	\$16,664,186.79
300 Purchased Professional and Technical Services				
322 Professional Educational Services – Ius	304,366.79			304,366.79
324 Professional Educational Services – Employee Training and Development Services	1,646.63	43,655.27		45,301.90
329 Professional Educational Services – Other		63,988.37	4,619.26	68,607.63
330 Other Professional Services	66,305.00	49,295.00		115,600.00
390 Other Purchased Professional and Technical Services		1,950.00		1,950.00
Total Purchased Professional and Technical Services	\$372,318.42	\$158,888.64	\$4,619.26	\$535,826.32
400 Purchased Property Services				
430 Repairs and Maintenance Services	20,348.27	28,048.99		48,397.26
440 Rentals	183,268.39	194,827.72		378,096.11
Total Purchased Property Services	\$203,616.66	\$222,876.71		\$426,493.37
500 Other Purchased Services				
510 Student Transportation Services	3,946.10	1,242.37		5,188.47
562 Tuition To Pennsylvania Charter Schools	122,703.54	811,482.03		934,185.57
580 Travel	9,582.61	168.06		9,750.67
Total Other Purchased Services	\$136,232.25	\$812,892.46		\$949,124.71
600 Supplies				
610 General Supplies	267,445.87	154,602.39		422,048.26
640 Books and Periodicals	339,541.66	1,194,674.29		1,534,215.95
Total Supplies	\$606,987.53	\$1,349,276.68		\$1,956,264.21
700 Property				
750 Equipment – Original and Additional	1,557.25	48,397.86		49,955.11
760 Equipment – Replacement	2,948.23			2,948.23
Total Property	\$4,505.48	\$48,397.86		\$52,903.34
800 Other Objects				
810 Dues and Fees		1,242.00		1,242.00
Total Other Objects		\$1,242.00		\$1,242.00
Total 1100 Regular Programs – Elementary / Secondary	\$23,885,437.77	\$24,733,395.45	\$358,269.26	\$48,977,102.48

LEA : 104107903 Seneca Valley SD

Printed 4/28/2017 11:48:37 AM

Page - 4 of 22

General Fund (10)**1110 Regular Programs**

	<u>Elementary</u>	<u>Secondary</u>	<u>Federal</u>	<u>Total</u>
100 Personnel Services – Salaries				
100 Personnel Services – Salaries	14,184,176.86	13,981,354.81		28,165,531.67
Total Personnel Services – Salaries	\$14,184,176.86	\$13,981,354.81		\$28,165,531.67
200 Personnel Services – Employee Benefits				
210 Group Insurance – Contracted Provider	3,541,428.79	3,424,275.18		6,965,703.97
220 Social Security Contributions	1,077,879.34	1,057,132.58		2,135,011.92
230 PSERS Retirement Contributions	3,628,436.41	3,547,356.34		7,175,792.75
240 Tuition Reimbursement	53,603.50	58,194.00		111,797.50
250 Unemployment Compensation	7,622.87	1,487.96		9,110.83
260 Workers' Compensation	68,629.66	70,020.23		138,649.89
Total Personnel Services – Employee Benefits	\$8,377,600.57	\$8,158,466.29		\$16,536,066.86
300 Purchased Professional and Technical Services				
322 Professional Educational Services – Ius	304,366.79			304,366.79
324 Professional Educational Services – Employee Training and Development Services	1,646.63	43,655.27		45,301.90
329 Professional Educational Services – Other		63,988.37		63,988.37
330 Other Professional Services	66,305.00	49,295.00		115,600.00
390 Other Purchased Professional and Technical Services		1,950.00		1,950.00
Total Purchased Professional and Technical Services	\$372,318.42	\$158,888.64		\$531,207.06
400 Purchased Property Services				
430 Repairs and Maintenance Services	20,348.27	28,048.99		48,397.26
440 Rentals	183,268.39	194,827.72		378,096.11
Total Purchased Property Services	\$203,616.66	\$222,876.71		\$426,493.37
500 Other Purchased Services				
510 Student Transportation Services	3,946.10	1,242.37		5,188.47
562 Tuition To Pennsylvania Charter Schools	122,703.54	811,482.03		934,185.57
580 Travel	9,582.61	168.06		9,750.67
Total Other Purchased Services	\$136,232.25	\$812,892.46		\$949,124.71
600 Supplies				
610 General Supplies	267,445.87	154,602.39		422,048.26
640 Books and Periodicals	339,541.66	1,194,674.29		1,534,215.95
Total Supplies	\$606,987.53	\$1,349,276.68		\$1,956,264.21
700 Property				
750 Equipment – Original and Additional	1,557.25	48,397.86		49,955.11
760 Equipment – Replacement	2,948.23			2,948.23
Total Property	\$4,505.48	\$48,397.86		\$52,903.34
800 Other Objects				
810 Dues and Fees		1,242.00		1,242.00
Total Other Objects		\$1,242.00		\$1,242.00
Total 1110 Regular Programs	\$23,885,437.77	\$24,733,395.45		\$48,618,833.22

General Fund (10)

1190 Federally-Funded Regular Programs

100 Personnel Services – Salaries

100 Personnel Services – Salaries

Total Personnel Services – Salaries

200 Personnel Services – Employee Benefits

210 Group Insurance – Contracted Provider

220 Social Security Contributions

230 PSERS Retirement Contributions

250 Unemployment Compensation

260 Workers' Compensation

Total Personnel Services – Employee Benefits

300 Purchased Professional and Technical Services

329 Professional Educational Services – Other

Total Purchased Professional and Technical Services

Total 1190 Federally-Funded Regular Programs

	<u>Elementary</u>	<u>Secondary</u>	<u>Federal</u>	<u>Total</u>
			225,530.07	225,530.07
Total Personnel Services – Salaries			\$225,530.07	\$225,530.07
			77,744.60	77,744.60
			11,052.12	11,052.12
			37,331.58	37,331.58
			257.48	257.48
			1,734.15	1,734.15
Total Personnel Services – Employee Benefits			\$128,119.93	\$128,119.93
			4,619.26	4,619.26
Total Purchased Professional and Technical Services			\$4,619.26	\$4,619.26
Total 1190 Federally-Funded Regular Programs			\$358,269.26	\$358,269.26

General Fund (10)

1200 Special Programs – Elementary / Secondary

	<u>Elementary</u>	<u>Secondary</u>	<u>Federal</u>	<u>Total</u>
100 Personnel Services – Salaries				
100 Personnel Services – Salaries	4,073,906.35	3,893,595.29	380,635.89	8,348,137.53
Total Personnel Services – Salaries	\$4,073,906.35	\$3,893,595.29	\$380,635.89	\$8,348,137.53
200 Personnel Services – Employee Benefits				
210 Group Insurance – Contracted Provider	774,107.70	919,369.31	93,302.81	1,786,779.82
220 Social Security Contributions	305,963.45	285,064.09	37,031.14	628,058.68
230 PSERS Retirement Contributions	1,079,147.68	967,078.08	87,894.73	2,134,120.49
250 Unemployment Compensation	2,334.24	6,008.89	1,100.55	9,443.68
260 Workers' Compensation	22,591.03	18,215.49	1,643.70	42,450.22
Total Personnel Services – Employee Benefits	\$2,184,144.10	\$2,195,735.86	\$220,972.93	\$4,600,852.89
300 Purchased Professional and Technical Services				
322 Professional Educational Services – lus	89,050.63	207,183.16	548,322.92	844,556.71
324 Professional Educational Services – Employee Training and Development Services	1,297.75	1,443.73		2,741.48
329 Professional Educational Services – Other	205,801.58	31,267.39	81,573.63	318,642.60
330 Other Professional Services	148,154.38	24,623.75		172,778.13
Total Purchased Professional and Technical Services	\$444,304.34	\$264,518.03	\$629,896.55	\$1,338,718.92
500 Other Purchased Services				
510 Student Transportation Services	1,655.00	11,750.67		13,405.67
561 Tuition To Other School Districts Within the State	14,073.62	84,607.14		98,680.76
562 Tuition To Pennsylvania Charter Schools	(88,497.43)	360,540.09	183,365.50	455,408.16
563 Tuition To Nonpublic Schools	91,330.72	309,372.82		400,703.54
567 Tuition To Approved Private Schools (APS) and PA Chartered Schools for the Deaf and Blind	893,255.80	175,890.29	149,146.43	1,218,292.52
568 Tuition To Private Residential Rehabilitative Institutions (PRRI) [In-State] and Detention Centers		1,500.72		1,500.72
580 Travel	2,366.47	3,532.53		5,899.00
Total Other Purchased Services	\$914,184.18	\$947,194.26	\$332,511.93	\$2,193,890.37
600 Supplies				
610 General Supplies	26,039.88	15,767.84	1,920.00	43,727.72
620 Energy		1,471.17		1,471.17
640 Books and Periodicals	15,409.00	3,329.72		18,738.72
Total Supplies	\$41,448.88	\$20,568.73	\$1,920.00	\$63,937.61
700 Property				
750 Equipment – Original and Additional	3,771.96	4,712.59		8,484.55
760 Equipment – Replacement	689.30			689.30
Total Property	\$4,461.26	\$4,712.59		\$9,173.85
800 Other Objects				
810 Dues and Fees	307.50	2,696.60		3,004.10
Total Other Objects	\$307.50	\$2,696.60		\$3,004.10
Total 1200 Special Programs – Elementary / Secondary	\$7,662,756.61	\$7,329,021.36	\$1,565,937.30	\$16,557,715.27

General Fund (10)

1210 Life Skills Support

	<u>Elementary</u>	<u>Secondary</u>	<u>Federal</u>	<u>Total</u>
100 Personnel Services – Salaries				
100 Personnel Services – Salaries	115,935.78	197,161.51	15,626.78	328,724.07
Total Personnel Services – Salaries	\$115,935.78	\$197,161.51	\$15,626.78	\$328,724.07
200 Personnel Services – Employee Benefits				
210 Group Insurance – Contracted Provider	19,531.68	28,996.44	55.68	48,583.80
220 Social Security Contributions	8,747.29	14,963.48	1,195.48	24,906.25
230 PSERS Retirement Contributions	29,957.92	50,911.88	4,025.32	84,895.12
250 Unemployment Compensation	89.44	211.88	4.96	306.28
260 Workers' Compensation	110.19	121.61		231.80
Total Personnel Services – Employee Benefits	\$58,436.52	\$95,205.29	\$5,281.44	\$158,923.25
300 Purchased Professional and Technical Services				
322 Professional Educational Services – lus	336.38	102,774.38	43,338.00	146,448.76
329 Professional Educational Services – Other		5,900.00	37.50	5,937.50
Total Purchased Professional and Technical Services	\$336.38	\$108,674.38	\$43,375.50	\$152,386.26
500 Other Purchased Services				
561 Tuition To Other School Districts Within the State		59,431.60		59,431.60
563 Tuition To Nonpublic Schools		17,651.33		17,651.33
567 Tuition To Approved Private Schools (APS) and PA Chartered Schools for the Deaf and Blind	4,800.00			4,800.00
Total Other Purchased Services	\$4,800.00	\$77,082.93		\$81,882.93
600 Supplies				
610 General Supplies	3,000.00	2,215.97		5,215.97
620 Energy		1,471.17		1,471.17
Total Supplies	\$3,000.00	\$3,687.14		\$6,687.14
700 Property				
750 Equipment – Original and Additional	663.00	1,452.49		2,115.49
Total Property	\$663.00	\$1,452.49		\$2,115.49
Total 1210 Life Skills Support	\$183,171.68	\$483,263.74	\$64,283.72	\$730,719.14

General Fund (10)

1220 Sensory Support

	<u>Elementary</u>	<u>Secondary</u>	<u>Federal</u>	<u>Total</u>
100 Personnel Services – Salaries				
100 Personnel Services – Salaries	769,236.30	186,196.40		955,432.70
Total Personnel Services – Salaries	\$769,236.30	\$186,196.40		\$955,432.70
200 Personnel Services – Employee Benefits				
210 Group Insurance – Contracted Provider	186,117.74	41,347.07		227,464.81
220 Social Security Contributions	58,065.36	14,101.83		72,167.19
230 PSERS Retirement Contributions	205,818.93	47,679.57		253,498.50
250 Unemployment Compensation	541.78	149.62		691.40
260 Workers' Compensation	2,079.60	613.18		2,692.78
Total Personnel Services – Employee Benefits	\$452,623.41	\$103,891.27		\$556,514.68
300 Purchased Professional and Technical Services				
322 Professional Educational Services – lus	2,275.75	1,629.00	290,493.75	294,398.50
324 Professional Educational Services – Employee Training and Development Services	21.60			21.60
329 Professional Educational Services – Other			26,368.73	26,368.73
330 Other Professional Services	1,500.00			1,500.00
Total Purchased Professional and Technical Services	\$3,797.35	\$1,629.00	\$316,862.48	\$322,288.83
500 Other Purchased Services				
567 Tuition To Approved Private Schools (APS) and PA Chartered Schools for the Deaf and Blind	4,200.00	36,172.55	181.43	40,553.98
580 Travel	300.00	300.00		600.00
Total Other Purchased Services	\$4,500.00	\$36,472.55	\$181.43	\$41,153.98
600 Supplies				
610 General Supplies	2,497.37	2,500.50		4,997.87
Total Supplies	\$2,497.37	\$2,500.50		\$4,997.87
Total 1220 Sensory Support	\$1,232,654.43	\$330,689.72	\$317,043.91	\$1,880,388.06

General Fund (10)

1230 Emotional Support

	<u>Elementary</u>	<u>Secondary</u>	<u>Federal</u>	<u>Total</u>
100 Personnel Services – Salaries				
100 Personnel Services – Salaries	353,439.97	173,111.94	307,469.83	834,021.74
Total Personnel Services – Salaries	\$353,439.97	\$173,111.94	\$307,469.83	\$834,021.74
200 Personnel Services – Employee Benefits				
210 Group Insurance – Contracted Provider	55,773.96	45,199.56	93,048.24	194,021.76
220 Social Security Contributions	26,307.04	4,983.15	31,444.27	62,734.46
230 PSERS Retirement Contributions	125,984.18	15,872.92	69,001.30	210,858.40
250 Unemployment Compensation	(503.07)	60.87	1,135.29	693.09
260 Workers' Compensation	1,099.35	203.71	1,274.43	2,577.49
Total Personnel Services – Employee Benefits	\$208,661.46	\$66,320.21	\$195,903.53	\$470,885.20
300 Purchased Professional and Technical Services				
322 Professional Educational Services – lus	29,345.18	37,684.66	10,450.00	77,479.84
329 Professional Educational Services – Other	39,090.05	12,114.12		51,204.17
330 Other Professional Services	2,478.05	2,610.00		5,088.05
Total Purchased Professional and Technical Services	\$70,913.28	\$52,408.78	\$10,450.00	\$133,772.06
500 Other Purchased Services				
561 Tuition To Other School Districts Within the State		4,586.62		4,586.62
563 Tuition To Nonpublic Schools	91,330.72	291,721.49		383,052.21
567 Tuition To Approved Private Schools (APS) and PA Chartered Schools for the Deaf and Blind	39,175.00	27,260.38	148,965.00	215,400.38
568 Tuition To Private Residential Rehabilitative Institutions (PRRI) [In-State] and Detention Centers		1,500.72		1,500.72
580 Travel	682.02	186.18		868.20
Total Other Purchased Services	\$131,187.74	\$325,255.39	\$148,965.00	\$605,408.13
600 Supplies				
610 General Supplies	1,883.71	395.87		2,279.58
640 Books and Periodicals	93.79	69.00		162.79
Total Supplies	\$1,977.50	\$464.87		\$2,442.37
700 Property				
760 Equipment – Replacement	689.30			689.30
Total Property	\$689.30			\$689.30
800 Other Objects				
810 Dues and Fees	200.00			200.00
Total Other Objects	\$200.00			\$200.00
Total 1230 Emotional Support	\$767,069.25	\$617,561.19	\$662,788.36	\$2,047,418.80

LEA : 104107903 Seneca Valley SD

Printed 4/28/2017 11:48:37 AM

Page - 10 of 22

General Fund (10)**1240 Academic Support**

	<u>Elementary</u>	<u>Secondary</u>	<u>Federal</u>	<u>Total</u>
100 Personnel Services – Salaries				
100 Personnel Services – Salaries	2,835,294.30	3,176,448.80	57,539.28	6,069,282.38
Total Personnel Services – Salaries	\$2,835,294.30	\$3,176,448.80	\$57,539.28	\$6,069,282.38
200 Personnel Services – Employee Benefits				
210 Group Insurance – Contracted Provider	512,684.32	778,676.39	198.89	1,291,559.60
220 Social Security Contributions	212,843.76	239,096.16	4,391.39	456,331.31
230 PSERS Retirement Contributions	717,386.65	811,094.71	14,868.11	1,543,349.47
250 Unemployment Compensation	2,206.09	5,457.58	(39.70)	7,623.97
260 Workers' Compensation	19,301.89	16,311.59	369.27	35,982.75
Total Personnel Services – Employee Benefits	\$1,464,422.71	\$1,850,636.43	\$19,787.96	\$3,334,847.10
300 Purchased Professional and Technical Services				
322 Professional Educational Services – lus	4,643.80	15,970.62	192,200.00	212,814.42
324 Professional Educational Services – Employee Training and Development Services	1,276.15	1,443.73		2,719.88
329 Professional Educational Services – Other			7,994.50	7,994.50
330 Other Professional Services	144,176.33	22,013.75		166,190.08
Total Purchased Professional and Technical Services	\$150,096.28	\$39,428.10	\$200,194.50	\$389,718.88
500 Other Purchased Services				
510 Student Transportation Services	1,655.00	5,540.67		7,195.67
561 Tuition To Other School Districts Within the State	14,073.62	20,588.92		34,662.54
562 Tuition To Pennsylvania Charter Schools	(88,497.43)	360,540.09	183,365.50	455,408.16
580 Travel	1,384.45	2,426.35		3,810.80
Total Other Purchased Services	(\$71,384.36)	\$389,096.03	\$183,365.50	\$501,077.17
600 Supplies				
610 General Supplies	18,658.80	10,655.50	1,920.00	31,234.30
640 Books and Periodicals	15,315.21	3,260.72		18,575.93
Total Supplies	\$33,974.01	\$13,916.22	\$1,920.00	\$49,810.23
700 Property				
750 Equipment – Original and Additional	3,108.96	3,260.10		6,369.06
Total Property	\$3,108.96	\$3,260.10		\$6,369.06
800 Other Objects				
810 Dues and Fees	107.50	2,696.60		2,804.10
Total Other Objects	\$107.50	\$2,696.60		\$2,804.10
Total 1240 Academic Support	\$4,415,619.40	\$5,475,482.28	\$462,807.24	\$10,353,908.92

General Fund (10)

	<u>Elementary</u>	<u>Secondary</u>	<u>Federal</u>	<u>Total</u>
1241 Learning Support – Public				
100 Personnel Services – Salaries				
100 Personnel Services – Salaries	2,355,525.64	2,698,700.80	57,539.28	5,111,765.72
Total Personnel Services – Salaries	\$2,355,525.64	\$2,698,700.80	\$57,539.28	\$5,111,765.72
200 Personnel Services – Employee Benefits				
210 Group Insurance – Contracted Provider	422,826.72	664,753.15	198.89	1,087,778.76
220 Social Security Contributions	176,610.00	203,203.93	4,391.39	384,205.32
230 PSERS Retirement Contributions	594,530.88	688,910.09	14,868.11	1,298,309.08
250 Unemployment Compensation	1,875.25	5,164.62	(39.70)	7,000.17
260 Workers' Compensation	16,942.35	13,433.04	369.27	30,744.66
Total Personnel Services – Employee Benefits	\$1,212,785.20	\$1,575,464.83	\$19,787.96	\$2,808,037.99
300 Purchased Professional and Technical Services				
322 Professional Educational Services – lus	4,643.80	15,970.62	192,200.00	212,814.42
324 Professional Educational Services – Employee Training and Development Services	866.15	1,006.23		1,872.38
329 Professional Educational Services – Other			7,994.50	7,994.50
330 Other Professional Services	144,176.33	22,013.75		166,190.08
Total Purchased Professional and Technical Services	\$149,686.28	\$38,990.60	\$200,194.50	\$388,871.38
500 Other Purchased Services				
510 Student Transportation Services	1,655.00	736.00		2,391.00
561 Tuition To Other School Districts Within the State	14,073.62	20,588.92		34,662.54
562 Tuition To Pennsylvania Charter Schools	(88,497.43)	360,540.09	183,365.50	455,408.16
580 Travel	740.03	1,940.96		2,680.99
Total Other Purchased Services	(\$72,028.78)	\$383,805.97	\$183,365.50	\$495,142.69
600 Supplies				
610 General Supplies	15,937.12	9,606.90	1,920.00	27,464.02
640 Books and Periodicals	14,837.90	2,697.39		17,535.29
Total Supplies	\$30,775.02	\$12,304.29	\$1,920.00	\$44,999.31
700 Property				
750 Equipment – Original and Additional	2,633.25	2,244.92		4,878.17
Total Property	\$2,633.25	\$2,244.92		\$4,878.17
800 Other Objects				
810 Dues and Fees		200.00		200.00
Total Other Objects		\$200.00		\$200.00
Total 1241 Learning Support – Public	\$3,679,376.61	\$4,711,711.41	\$462,807.24	\$8,853,895.26

General Fund (10)

	<u>Elementary</u>	<u>Secondary</u>	<u>Federal</u>	<u>Total</u>
1243 Gifted Support				
100 Personnel Services – Salaries				
100 Personnel Services – Salaries	479,768.66	477,748.00		957,516.66
Total Personnel Services – Salaries	\$479,768.66	\$477,748.00		\$957,516.66
200 Personnel Services – Employee Benefits				
210 Group Insurance – Contracted Provider	89,857.60	113,923.24		203,780.84
220 Social Security Contributions	36,233.76	35,892.23		72,125.99
230 PSERS Retirement Contributions	122,855.77	122,184.62		245,040.39
250 Unemployment Compensation	330.84	292.96		623.80
260 Workers' Compensation	2,359.54	2,878.55		5,238.09
Total Personnel Services – Employee Benefits	\$251,637.51	\$275,171.60		\$526,809.11
300 Purchased Professional and Technical Services				
324 Professional Educational Services – Employee Training and Development Services	410.00	437.50		847.50
Total Purchased Professional and Technical Services	\$410.00	\$437.50		\$847.50
500 Other Purchased Services				
510 Student Transportation Services		4,804.67		4,804.67
580 Travel	644.42	485.39		1,129.81
Total Other Purchased Services	\$644.42	\$5,290.06		\$5,934.48
600 Supplies				
610 General Supplies	2,721.68	1,048.60		3,770.28
640 Books and Periodicals	477.31	563.33		1,040.64
Total Supplies	\$3,198.99	\$1,611.93		\$4,810.92
700 Property				
750 Equipment – Original and Additional	475.71	1,015.18		1,490.89
Total Property	\$475.71	\$1,015.18		\$1,490.89
800 Other Objects				
810 Dues and Fees	107.50	2,496.60		2,604.10
Total Other Objects	\$107.50	\$2,496.60		\$2,604.10
Total 1243 Gifted Support	\$736,242.79	\$763,770.87		\$1,500,013.66

LEA : 104107903 Seneca Valley SD

Printed 4/28/2017 11:48:37 AM

General Fund (10)

1270 Multi-Handicapped Support

300 Purchased Professional and Technical Services

322 Professional Educational Services – Ius

329 Professional Educational Services – Other

Total Purchased Professional and Technical Services

Total 1270 Multi-Handicapped Support

<u>Elementary</u>	<u>Secondary</u>	<u>Federal</u>	<u>Total</u>
	49,124.50	7,130.17	56,254.67
		26,172.90	26,172.90
	\$49,124.50	\$33,303.07	\$82,427.57
	\$49,124.50	\$33,303.07	\$82,427.57

General Fund (10)

1280 Early Intervention Support

300 Purchased Professional and Technical Services

322 Professional Educational Services – lus

Total Purchased Professional and Technical Services

Total 1280 Early Intervention Support

Elementary

Secondary

Federal

Total

52,449.52

4,711.00

57,160.52

\$52,449.52

\$4,711.00

\$57,160.52

\$52,449.52

\$4,711.00

\$57,160.52

General Fund (10)

1290 Special Programs - Other Support

100 Personnel Services – Salaries

100 Personnel Services – Salaries

Total Personnel Services – Salaries

200 Personnel Services – Employee Benefits

210 Group Insurance – Contracted Provider

220 Social Security Contributions

230 PSERS Retirement Contributions

250 Unemployment Compensation

260 Workers' Compensation

Total Personnel Services – Employee Benefits

300 Purchased Professional and Technical Services

329 Professional Educational Services – Other

Total Purchased Professional and Technical Services

500 Other Purchased Services

510 Student Transportation Services

567 Tuition To Approved Private Schools (APS) and PA Chartered Schools for the Deaf and Blind

580 Travel

Total Other Purchased Services

Total 1290 Special Programs - Other Support

	<u>Elementary</u>	<u>Secondary</u>	<u>Federal</u>	<u>Total</u>
		160,676.64		160,676.64
		\$160,676.64		\$160,676.64
		25,149.85		25,149.85
		11,919.47		11,919.47
		41,519.00		41,519.00
		128.94		128.94
		965.40		965.40
		\$79,682.66		\$79,682.66
	166,711.53	13,253.27	21,000.00	200,964.80
	\$166,711.53	\$13,253.27	\$21,000.00	\$200,964.80
		6,210.00		6,210.00
	845,080.80	112,457.36		957,538.16
		620.00		620.00
	\$845,080.80	\$119,287.36		\$964,368.16
	\$1,011,792.33	\$372,899.93	\$21,000.00	\$1,405,692.26

General Fund (10)

1300 Vocational Education

	<u>Elementary</u>	<u>Secondary</u>	<u>Federal</u>	<u>Total</u>
100 Personnel Services – Salaries				
100 Personnel Services – Salaries		1,581,221.71		1,581,221.71
Total Personnel Services – Salaries		\$1,581,221.71		\$1,581,221.71
200 Personnel Services – Employee Benefits				
210 Group Insurance – Contracted Provider		414,745.18		414,745.18
220 Social Security Contributions		119,221.02		119,221.02
230 PSERS Retirement Contributions		405,744.05		405,744.05
250 Unemployment Compensation		1,059.39		1,059.39
260 Workers' Compensation		8,037.81		8,037.81
Total Personnel Services – Employee Benefits		\$948,807.45		\$948,807.45
300 Purchased Professional and Technical Services				
330 Other Professional Services		18,385.00		18,385.00
Total Purchased Professional and Technical Services		\$18,385.00		\$18,385.00
400 Purchased Property Services				
430 Repairs and Maintenance Services		450.00		450.00
Total Purchased Property Services		\$450.00		\$450.00
500 Other Purchased Services				
564 Tuition To Career and Technology Centers		580,104.95		580,104.95
Total Other Purchased Services		\$580,104.95		\$580,104.95
600 Supplies				
610 General Supplies		50,541.31		50,541.31
640 Books and Periodicals		125,000.00		125,000.00
Total Supplies		\$175,541.31		\$175,541.31
700 Property				
750 Equipment – Original and Additional		19,567.79		19,567.79
760 Equipment – Replacement		462.83		462.83
Total Property		\$20,030.62		\$20,030.62
Total 1300 Vocational Education		\$3,324,541.04		\$3,324,541.04

General Fund (10)

1400 Other Instructional Programs – Elementary / Secondary

	<u>Elementary</u>	<u>Secondary</u>	<u>Federal</u>	<u>Total</u>
100 Personnel Services – Salaries				
100 Personnel Services – Salaries	5,942.09	140,814.99		146,757.08
Total Personnel Services – Salaries	\$5,942.09	\$140,814.99		\$146,757.08
200 Personnel Services – Employee Benefits				
210 Group Insurance – Contracted Provider		17,279.08		17,279.08
220 Social Security Contributions	453.24	10,688.45		11,141.69
230 PSERS Retirement Contributions	1,329.45	36,211.78		37,541.23
250 Unemployment Compensation	2.55	70.22		72.77
260 Workers' Compensation	1.65	540.00		541.65
Total Personnel Services – Employee Benefits	\$1,786.89	\$64,789.53		\$66,576.42
300 Purchased Professional and Technical Services				
322 Professional Educational Services – lus		400.00		400.00
Total Purchased Professional and Technical Services		\$400.00		\$400.00
500 Other Purchased Services				
563 Tuition To Nonpublic Schools		25,615.82		25,615.82
Total Other Purchased Services		\$25,615.82		\$25,615.82
Total 1400 Other Instructional Programs – Elementary / Secondary	\$7,728.98	\$231,620.34		\$239,349.32

General Fund (10)

1420 Summer School

100 Personnel Services – Salaries

100 Personnel Services – Salaries

Total Personnel Services – Salaries

200 Personnel Services – Employee Benefits

220 Social Security Contributions

230 PSERS Retirement Contributions

250 Unemployment Compensation

260 Workers' Compensation

Total Personnel Services – Employee Benefits

Total 1420 Summer School

	<u>Elementary</u>	<u>Secondary</u>	<u>Federal</u>	<u>Total</u>
	3,079.71	40,063.83		43,143.54
	\$3,079.71	\$40,063.83		\$43,143.54
	235.59	3,063.61		3,299.20
	795.80	10,352.54		11,148.34
		1.76		1.76
	1.65	48.34		49.99
	\$1,033.04	\$13,466.25		\$14,499.29
	\$4,112.75	\$53,530.08		\$57,642.83

General Fund (10)

1430 Homebound Instruction

100 Personnel Services – Salaries

100 Personnel Services – Salaries

Total Personnel Services – Salaries

200 Personnel Services – Employee Benefits

220 Social Security Contributions

230 PSERS Retirement Contributions

250 Unemployment Compensation

260 Workers' Compensation

Total Personnel Services – Employee Benefits

Total 1430 Homebound Instruction

	<u>Elementary</u>	<u>Secondary</u>	<u>Federal</u>	<u>Total</u>
100 Personnel Services – Salaries	2,862.38	30,870.16		33,732.54
Total Personnel Services – Salaries	\$2,862.38	\$30,870.16		\$33,732.54
200 Personnel Services – Employee Benefits				
220 Social Security Contributions	217.65	2,348.54		2,566.19
230 PSERS Retirement Contributions	533.65	7,802.04		8,335.69
250 Unemployment Compensation	2.55	21.42		23.97
260 Workers' Compensation		71.38		71.38
Total Personnel Services – Employee Benefits	\$753.85	\$10,243.38		\$10,997.23
Total 1430 Homebound Instruction	\$3,616.23	\$41,113.54		\$44,729.77

General Fund (10)

1440 Alternative Regular Education Programs

	<u>Elementary</u>	<u>Secondary</u>	<u>Federal</u>	<u>Total</u>
100 Personnel Services – Salaries				
100 Personnel Services – Salaries		69,881.00		69,881.00
Total Personnel Services – Salaries		\$69,881.00		\$69,881.00
200 Personnel Services – Employee Benefits				
210 Group Insurance – Contracted Provider		17,279.08		17,279.08
220 Social Security Contributions		5,276.30		5,276.30
230 PSERS Retirement Contributions		18,057.20		18,057.20
250 Unemployment Compensation		47.04		47.04
260 Workers' Compensation		420.28		420.28
Total Personnel Services – Employee Benefits		\$41,079.90		\$41,079.90
300 Purchased Professional and Technical Services				
322 Professional Educational Services – lus		400.00		400.00
Total Purchased Professional and Technical Services		\$400.00		\$400.00
500 Other Purchased Services				
563 Tuition To Nonpublic Schools		25,615.82		25,615.82
Total Other Purchased Services		\$25,615.82		\$25,615.82
Total 1440 Alternative Regular Education Programs		\$136,976.72		\$136,976.72

General Fund (10)

1441 Adjudicated / Court-Placed Programs

Elementary

Secondary

Federal

Total

300 Purchased Professional and Technical Services

322 Professional Educational Services – Ius

400.00

400.00

Total Purchased Professional and Technical Services

\$400.00

\$400.00

Total 1441 Adjudicated / Court-Placed Programs

\$400.00

\$400.00

General Fund (10)

	<u>Elementary</u>	<u>Secondary</u>	<u>Federal</u>	<u>Total</u>
1442 Alternative Education Programs				
100 Personnel Services – Salaries				
100 Personnel Services – Salaries		69,881.00		69,881.00
Total Personnel Services – Salaries		\$69,881.00		\$69,881.00
200 Personnel Services – Employee Benefits				
210 Group Insurance – Contracted Provider		17,279.08		17,279.08
220 Social Security Contributions		5,276.30		5,276.30
230 PSERS Retirement Contributions		18,057.20		18,057.20
250 Unemployment Compensation		47.04		47.04
260 Workers' Compensation		420.28		420.28
Total Personnel Services – Employee Benefits		\$41,079.90		\$41,079.90
500 Other Purchased Services				
563 Tuition To Nonpublic Schools		25,615.82		25,615.82
Total Other Purchased Services		\$25,615.82		\$25,615.82
Total 1442 Alternative Education Programs		\$136,576.72		\$136,576.72

General Fund (10)

2000 Support Services

Total

100 Personnel Services – Salaries

100 Personnel Services – Salaries 9,794,341.17

Total Personnel Services – Salaries \$9,794,341.17

200 Personnel Services – Employee Benefits

210 Group Insurance – Contracted Provider 2,758,521.54

220 Social Security Contributions 727,691.27

230 PSERS Retirement Contributions 2,467,701.16

240 Tuition Reimbursement 23,589.91

250 Unemployment Compensation 5,771.46

260 Workers' Compensation 42,038.14

Total Personnel Services – Employee Benefits \$6,025,313.48

300 Purchased Professional and Technical Services

310 Official / Administrative Services 39,664.73

324 Professional Educational Services – Employee Training and Development Services 20,188.08

329 Professional Educational Services – Other 863,680.06

330 Other Professional Services 241,021.59

340 Technical Services 106,921.77

390 Other Purchased Professional and Technical Services 18,763.00

Total Purchased Professional and Technical Services \$1,290,239.23

400 Purchased Property Services

410 Cleaning Services 1,717,922.22

420 Utility Services 678,513.55

430 Repairs and Maintenance Services 457,789.31

440 Rentals 45,086.24

490 Other Purchased Property Services 5,483.28

Total Purchased Property Services \$2,904,794.60

500 Other Purchased Services

513 Contracted Carriers 6,929,107.75

516 Student Transportation Services From the IU 10,582.09

520 Insurance – General 68,891.25

521 Fire Insurance 145,303.00

522 Automotive Liability Insurance 8,020.00

523 General Property and Liability Insurance 10,272.00

530 Communications 159,913.93

549 Other Advertising/Public Relations 8,258.36

550 Printing and Binding 60,180.85

580 Travel 22,306.36

595 IU Payments By Withholding 130,028.37

Total Other Purchased Services \$7,552,863.96

600 Supplies

610 General Supplies 766,740.38

620 Energy 521,511.54

640 Books and Periodicals 365,888.59

LEA : 104107903 Seneca Valley SD

Printed 4/28/2017 11:48:41 AM

General Fund (10)

2000 Support Services

Total

Total Supplies **\$1,654,140.51**

700 Property

750 Equipment – Original and Additional 265,444.44

760 Equipment – Replacement 553,382.75

Total Property **\$818,827.19**

800 Other Objects

810 Dues and Fees 52,907.99

820 Claims and Judgments Against the LEA 8,575.00

890 Miscellaneous Expenditures 5,051.53

Total Other Objects **\$66,534.52**

Total 2000 Support Services **\$30,107,054.66**

General Fund (10)

	<u>Elementary</u>	<u>Secondary</u>	<u>Federal</u>	<u>Total</u>
2100 Support Services – Students				
100 Personnel Services – Salaries				
100 Personnel Services – Salaries	665,488.57	1,079,977.43	12,000.00	1,792,554.18
Total Personnel Services – Salaries	\$665,488.57	\$1,079,977.43	\$12,000.00	\$1,792,554.18
200 Personnel Services – Employee Benefits				
210 Group Insurance – Contracted Provider	159,264.23	289,105.66		453,721.69
220 Social Security Contributions	50,354.97	81,681.11	267.75	134,229.53
230 PSERS Retirement Contributions	172,877.92	276,908.39		456,395.46
250 Unemployment Compensation	327.59	640.70	3.50	1,010.00
260 Workers' Compensation	2,276.75	5,834.85		8,270.25
Total Personnel Services – Employee Benefits	\$385,101.46	\$654,170.71	\$271.25	\$1,053,626.93
300 Purchased Professional and Technical Services				
324 Professional Educational Services – Employee Training and Development Services	2,101.55	1,528.05		3,629.60
329 Professional Educational Services – Other	17,252.50	31,789.28		49,041.78
330 Other Professional Services	3,000.00			3,000.00
Total Purchased Professional and Technical Services	\$22,354.05	\$33,317.33		\$55,671.38
500 Other Purchased Services				
580 Travel	356.76	472.58		829.34
Total Other Purchased Services	\$356.76	\$472.58		\$829.34
600 Supplies				
610 General Supplies	9,197.37	4,197.08		13,394.45
640 Books and Periodicals	150.00	347.76		497.76
Total Supplies	\$9,347.37	\$4,544.84		\$13,892.21
700 Property				
760 Equipment – Replacement	128.00			128.00
Total Property	\$128.00			\$128.00
800 Other Objects				
810 Dues and Fees	1,144.00	533.00		1,677.00
Total Other Objects	\$1,144.00	\$533.00		\$1,677.00
Total 2100 Support Services – Students	\$1,083,920.21	\$1,773,015.89	\$12,271.25	\$2,918,379.04

LEA : 104107903 Seneca Valley SD

Printed 4/28/2017 11:48:41 AM

Page - 4 of 51

General Fund (10)**2120 Guidance Services**

	<u>Elementary</u>	<u>Secondary</u>	<u>Federal</u>	<u>Total</u>
100 Personnel Services – Salaries				
100 Personnel Services – Salaries	371,089.17	905,436.23		1,276,525.40
Total Personnel Services – Salaries	\$371,089.17	\$905,436.23		\$1,276,525.40
200 Personnel Services – Employee Benefits				
210 Group Insurance – Contracted Provider	71,881.90	240,400.65		312,282.55
220 Social Security Contributions	28,002.07	68,410.59		96,412.66
230 PSERS Retirement Contributions	95,118.70	232,048.72		327,167.42
250 Unemployment Compensation	256.12	598.53		854.65
260 Workers' Compensation	939.15	4,760.11		5,699.26
Total Personnel Services – Employee Benefits	\$196,197.94	\$546,218.60		\$742,416.54
300 Purchased Professional and Technical Services				
324 Professional Educational Services – Employee Training and Development Services	1,553.08	1,528.05		3,081.13
329 Professional Educational Services – Other		1,525.53		1,525.53
Total Purchased Professional and Technical Services	\$1,553.08	\$3,053.58		\$4,606.66
500 Other Purchased Services				
580 Travel		24.76		24.76
Total Other Purchased Services		\$24.76		\$24.76
600 Supplies				
610 General Supplies	2,691.21	2,087.09		4,778.30
640 Books and Periodicals		195.25		195.25
Total Supplies	\$2,691.21	\$2,282.34		\$4,973.55
800 Other Objects				
810 Dues and Fees		129.00		129.00
Total Other Objects		\$129.00		\$129.00
Total 2120 Guidance Services	\$571,531.40	\$1,457,144.51		\$2,028,675.91

General Fund (10)

2140 Psychological Services

	<u>Elementary</u>	<u>Secondary</u>	<u>Federal</u>	<u>Total</u>
100 Personnel Services – Salaries				
100 Personnel Services – Salaries	294,399.40	174,541.20	12,000.00	480,940.60
Total Personnel Services – Salaries	\$294,399.40	\$174,541.20	\$12,000.00	\$480,940.60
200 Personnel Services – Employee Benefits				
210 Group Insurance – Contracted Provider	87,382.33	48,705.01		136,087.34
220 Social Security Contributions	22,352.90	13,270.52	267.75	35,891.17
230 PSERS Retirement Contributions	77,759.22	44,859.67		122,618.89
250 Unemployment Compensation	71.47	42.17	3.50	117.14
260 Workers' Compensation	1,337.60	1,074.74		2,412.34
Total Personnel Services – Employee Benefits	\$188,903.52	\$107,952.11	\$271.25	\$297,126.88
300 Purchased Professional and Technical Services				
324 Professional Educational Services – Employee Training and Development Services	548.47			548.47
329 Professional Educational Services – Other	12,250.00	9,000.00		21,250.00
330 Other Professional Services	3,000.00			3,000.00
Total Purchased Professional and Technical Services	\$15,798.47	\$9,000.00		\$24,798.47
500 Other Purchased Services				
580 Travel	356.76	447.82		804.58
Total Other Purchased Services	\$356.76	\$447.82		\$804.58
600 Supplies				
610 General Supplies	6,506.16	2,109.99		8,616.15
640 Books and Periodicals	150.00	152.51		302.51
Total Supplies	\$6,656.16	\$2,262.50		\$8,918.66
700 Property				
760 Equipment – Replacement	128.00			128.00
Total Property	\$128.00			\$128.00
800 Other Objects				
810 Dues and Fees	1,144.00	404.00		1,548.00
Total Other Objects	\$1,144.00	\$404.00		\$1,548.00
Total 2140 Psychological Services	\$507,386.31	\$294,607.63	\$12,271.25	\$814,265.19

General Fund (10)

2150 Speech Pathology and Audiology Services

300 Purchased Professional and Technical Services

329 Professional Educational Services – Other

Total Purchased Professional and Technical Services

Total 2150 Speech Pathology and Audiology Services

	<u>Elementary</u>	<u>Secondary</u>	<u>Federal</u>	<u>Total</u>
	5,002.50	21,263.75		26,266.25
	\$5,002.50	\$21,263.75		\$26,266.25
	\$5,002.50	\$21,263.75		\$26,266.25

General Fund (10)

2170 Student Accounting Services

Elementary

Secondary

Federal

Total

100 Personnel Services – Salaries

100 Personnel Services – Salaries

35,088.18

Total Personnel Services – Salaries

\$35,088.18

200 Personnel Services – Employee Benefits

210 Group Insurance – Contracted Provider

5,351.80

220 Social Security Contributions

1,925.70

230 PSERS Retirement Contributions

6,609.15

250 Unemployment Compensation

38.21

260 Workers' Compensation

158.65

Total Personnel Services – Employee Benefits

\$14,083.51

Total 2170 Student Accounting Services

\$49,171.69

General Fund (10)

	<u>Elementary</u>	<u>Secondary</u>	<u>Federal</u>	<u>Total</u>
2200 Support Services – Instructional Staff				
100 Personnel Services – Salaries				
100 Personnel Services – Salaries	735,016.90	592,642.06	74,614.51	1,402,273.47
Total Personnel Services – Salaries	\$735,016.90	\$592,642.06	\$74,614.51	\$1,402,273.47
200 Personnel Services – Employee Benefits				
210 Group Insurance – Contracted Provider	205,010.38	117,251.95	6,357.90	328,620.23
220 Social Security Contributions	56,773.50	43,014.18	2,846.36	102,634.04
230 PSERS Retirement Contributions	196,451.89	151,361.76	10,054.38	357,868.03
250 Unemployment Compensation	117.39	242.83	266.60	626.82
260 Workers' Compensation	3,187.37	2,866.37		6,053.74
Total Personnel Services – Employee Benefits	\$461,540.53	\$314,737.09	\$19,525.24	\$795,802.86
300 Purchased Professional and Technical Services				
324 Professional Educational Services – Employee Training and Development Services	3,000.00	3,081.18		6,081.18
329 Professional Educational Services – Other	126,716.67	204,133.37	47,821.25	378,671.29
330 Other Professional Services	1,000.00	3,320.00		4,320.00
390 Other Purchased Professional and Technical Services		2,407.00		2,407.00
Total Purchased Professional and Technical Services	\$130,716.67	\$212,941.55	\$47,821.25	\$391,479.47
500 Other Purchased Services				
580 Travel	1,647.06	1,422.90		3,069.96
Total Other Purchased Services	\$1,647.06	\$1,422.90		\$3,069.96
600 Supplies				
610 General Supplies	1,549.44	2,701.82		4,251.26
640 Books and Periodicals	22,425.92	9,809.38		32,235.30
Total Supplies	\$23,975.36	\$12,511.20		\$36,486.56
700 Property				
750 Equipment – Original and Additional		10,612.75		10,612.75
Total Property		\$10,612.75		\$10,612.75
800 Other Objects				
810 Dues and Fees	1,948.00	3,467.00		5,415.00
Total Other Objects	\$1,948.00	\$3,467.00		\$5,415.00
Total 2200 Support Services – Instructional Staff	\$1,354,844.52	\$1,148,334.55	\$141,961.00	\$2,645,140.07

LEA : 104107903 Seneca Valley SD

Printed 4/28/2017 11:48:41 AM

General Fund (10)

2220 Technology Support Services

600 Supplies

610 General Supplies

Total Supplies

700 Property

750 Equipment – Original and Additional

Total Property

Total 2220 Technology Support Services

Elementary

Secondary

Federal

Total

154.79

154.79

\$154.79

\$154.79

7,703.75

7,703.75

\$7,703.75

\$7,703.75

\$7,858.54

\$7,858.54

General Fund (10)

2240 Computer-Assisted Instruction Support Services

	<u>Elementary</u>	<u>Secondary</u>	<u>Federal</u>	<u>Total</u>
100 Personnel Services – Salaries				
100 Personnel Services – Salaries		48.31		48.31
Total Personnel Services – Salaries		\$48.31		\$48.31
200 Personnel Services – Employee Benefits				
220 Social Security Contributions		3.70		3.70
230 PSERS Retirement Contributions		12.48		12.48
260 Workers’ Compensation		0.30		0.30
Total Personnel Services – Employee Benefits		\$16.48		\$16.48
700 Property				
750 Equipment – Original and Additional		2,909.00		2,909.00
Total Property		\$2,909.00		\$2,909.00
Total 2240 Computer-Assisted Instruction Support Services		\$2,973.79		\$2,973.79

General Fund (10)

	<u>Elementary</u>	<u>Secondary</u>	<u>Federal</u>	<u>Total</u>
2250 School Library Services				
100 Personnel Services – Salaries				
100 Personnel Services – Salaries	374,894.60	252,225.89		627,120.49
Total Personnel Services – Salaries	\$374,894.60	\$252,225.89		\$627,120.49
200 Personnel Services – Employee Benefits				
210 Group Insurance – Contracted Provider	102,764.62	48,336.93		151,101.55
220 Social Security Contributions	28,388.74	19,106.75		47,495.49
230 PSERS Retirement Contributions	96,945.71	64,637.60		161,583.31
250 Unemployment Compensation	242.62	176.45		419.07
260 Workers' Compensation	1,888.50	1,516.75		3,405.25
Total Personnel Services – Employee Benefits	\$230,230.19	\$133,774.48		\$364,004.67
300 Purchased Professional and Technical Services				
390 Other Purchased Professional and Technical Services		424.00		424.00
Total Purchased Professional and Technical Services		\$424.00		\$424.00
600 Supplies				
610 General Supplies	294.24	500.00		794.24
640 Books and Periodicals	9,150.17	9,809.38		18,959.55
Total Supplies	\$9,444.41	\$10,309.38		\$19,753.79
Total 2250 School Library Services	\$614,569.20	\$396,733.75		\$1,011,302.95

General Fund (10)

	<u>Elementary</u>	<u>Secondary</u>	<u>Federal</u>	<u>Total</u>
2260 Instruction and Curriculum Development Services				
100 Personnel Services – Salaries				
100 Personnel Services – Salaries	319,445.99	326,589.86		646,035.85
Total Personnel Services – Salaries	\$319,445.99	\$326,589.86		\$646,035.85
200 Personnel Services – Employee Benefits				
210 Group Insurance – Contracted Provider	101,032.89	68,915.02		169,947.91
220 Social Security Contributions	22,682.98	22,854.34		45,537.32
230 PSERS Retirement Contributions	80,502.48	83,151.42		163,653.90
250 Unemployment Compensation	59.99	63.04		123.03
260 Workers' Compensation	1,245.10	1,305.52		2,550.62
Total Personnel Services – Employee Benefits	\$205,523.44	\$176,289.34		\$381,812.78
300 Purchased Professional and Technical Services				
324 Professional Educational Services – Employee Training and Development Services	3,000.00			3,000.00
329 Professional Educational Services – Other	6,107.54			6,107.54
330 Other Professional Services	1,000.00	3,320.00		4,320.00
Total Purchased Professional and Technical Services	\$10,107.54	\$3,320.00		\$13,427.54
500 Other Purchased Services				
580 Travel	1,647.06	1,422.90		3,069.96
Total Other Purchased Services	\$1,647.06	\$1,422.90		\$3,069.96
600 Supplies				
610 General Supplies	1,255.20	2,047.03		3,302.23
640 Books and Periodicals	13,275.75			13,275.75
Total Supplies	\$14,530.95	\$2,047.03		\$16,577.98
800 Other Objects				
810 Dues and Fees	1,948.00	1,497.00		3,445.00
Total Other Objects	\$1,948.00	\$1,497.00		\$3,445.00
Total 2260 Instruction and Curriculum Development Services	\$553,202.98	\$511,166.13		\$1,064,369.11

General Fund (10)

2270 Instructional Staff Professional Development Services

	<u>Elementary</u>	<u>Secondary</u>	<u>Federal</u>	<u>Total</u>
100 Personnel Services – Salaries				
100 Personnel Services – Salaries	19,638.67	1,004.72	74,614.51	95,257.90
Total Personnel Services – Salaries	\$19,638.67	\$1,004.72	\$74,614.51	\$95,257.90
200 Personnel Services – Employee Benefits				
210 Group Insurance – Contracted Provider	1,212.87		6,357.90	7,570.77
220 Social Security Contributions	4,097.25	76.49	2,846.36	7,020.10
230 PSERS Retirement Contributions	13,567.53	259.62	10,054.38	23,881.53
250 Unemployment Compensation	(185.22)		266.60	81.38
260 Workers' Compensation		6.23		6.23
Total Personnel Services – Employee Benefits	\$18,692.43	\$342.34	\$19,525.24	\$38,560.01
300 Purchased Professional and Technical Services				
324 Professional Educational Services – Employee Training and Development Services		3,081.18		3,081.18
329 Professional Educational Services – Other	120,609.13	204,133.37	47,821.25	372,563.75
390 Other Purchased Professional and Technical Services		1,983.00		1,983.00
Total Purchased Professional and Technical Services	\$120,609.13	\$209,197.55	\$47,821.25	\$377,627.93
800 Other Objects				
810 Dues and Fees		1,970.00		1,970.00
Total Other Objects		\$1,970.00		\$1,970.00
Total 2270 Instructional Staff Professional Development Services	\$158,940.23	\$212,514.61	\$141,961.00	\$513,415.84

General Fund (10)

	<u>Elementary</u>	<u>Secondary</u>	<u>Federal</u>	<u>Total</u>
2280 Nonpublic Support Services				
100 Personnel Services – Salaries				
100 Personnel Services – Salaries	21,037.64	12,773.28		33,810.92
Total Personnel Services – Salaries	\$21,037.64	\$12,773.28		\$33,810.92
200 Personnel Services – Employee Benefits				
220 Social Security Contributions	1,604.53	972.90		2,577.43
230 PSERS Retirement Contributions	5,436.17	3,300.64		8,736.81
250 Unemployment Compensation		3.34		3.34
260 Workers' Compensation	53.77	37.57		91.34
Total Personnel Services – Employee Benefits	\$7,094.47	\$4,314.45		\$11,408.92
Total 2280 Nonpublic Support Services	\$28,132.11	\$17,087.73		\$45,219.84

General Fund (10)

	<u>Elementary</u>	<u>Secondary</u>	<u>Federal</u>	<u>Total</u>
2300 Support Services – Administration				
100 Personnel Services – Salaries				
100 Personnel Services – Salaries	1,346,473.50	1,265,899.37		3,075,096.28
Total Personnel Services – Salaries	\$1,346,473.50	\$1,265,899.37		\$3,075,096.28
200 Personnel Services – Employee Benefits				
210 Group Insurance – Contracted Provider	428,829.36	388,320.93		949,898.54
220 Social Security Contributions	100,419.78	99,953.87		235,263.54
230 PSERS Retirement Contributions	339,592.62	338,396.78		789,598.82
240 Tuition Reimbursement	4,182.00	19,407.91		23,589.91
250 Unemployment Compensation	(43.21)	2,457.82		2,839.56
260 Workers' Compensation	4,752.97	6,542.54		13,702.63
Total Personnel Services – Employee Benefits	\$877,733.52	\$855,079.85		\$2,014,893.00
300 Purchased Professional and Technical Services				
310 Official / Administrative Services				39,664.73
324 Professional Educational Services – Employee Training and Development Services	2,511.80	4,946.90		8,058.70
329 Professional Educational Services – Other				68,684.28
330 Other Professional Services		1,875.00		230,622.08
Total Purchased Professional and Technical Services	\$2,511.80	\$6,821.90		\$347,029.79
400 Purchased Property Services				
430 Repairs and Maintenance Services	325.00			11,114.77
440 Rentals				35,246.24
Total Purchased Property Services	\$325.00			\$46,361.01
500 Other Purchased Services				
520 Insurance – General				68,891.25
530 Communications	21,697.69	19,570.07		56,023.03
549 Other Advertising/Public Relations				8,258.36
550 Printing and Binding	444.90	356.70		60,180.85
580 Travel	1,521.36	5,055.00		15,596.66
Total Other Purchased Services	\$23,663.95	\$24,981.77		\$208,950.15
600 Supplies				
610 General Supplies	5,157.67	6,336.41		33,858.64
640 Books and Periodicals	125.00	100.60		356.37
Total Supplies	\$5,282.67	\$6,437.01		\$34,215.01
700 Property				
750 Equipment – Original and Additional	1,500.00	632.95		2,132.95
760 Equipment – Replacement	634.35	42.39		676.74
Total Property	\$2,134.35	\$675.34		\$2,809.69
800 Other Objects				
810 Dues and Fees	6,935.00	6,458.90		33,949.96
820 Claims and Judgments Against the LEA				8,575.00
890 Miscellaneous Expenditures				5,051.53
Total Other Objects	\$6,935.00	\$6,458.90		\$47,576.49
Total 2300 Support Services – Administration	\$2,265,059.79	\$2,166,354.14		\$5,776,931.42

General Fund (10)

2310 Board Services

Elementary

Secondary

Federal

Total

300 Purchased Professional and Technical Services

324 Professional Educational Services – Employee Training and Development Services

150.00

330 Other Professional Services

23,649.00

Total Purchased Professional and Technical Services

\$23,799.00

400 Purchased Property Services

430 Repairs and Maintenance Services

10,789.77

440 Rentals

35,246.24

Total Purchased Property Services

\$46,036.01

500 Other Purchased Services

520 Insurance – General

68,891.25

530 Communications

79.73

549 Other Advertising/Public Relations

8,258.36

580 Travel

50.60

Total Other Purchased Services

\$77,279.94

600 Supplies

610 General Supplies

5,188.62

Total Supplies

\$5,188.62

800 Other Objects

810 Dues and Fees

12,604.00

820 Claims and Judgments Against the LEA

8,575.00

Total Other Objects

\$21,179.00

Total 2310 Board Services

\$173,482.57

General Fund (10)

	<u>Elementary</u>	<u>Secondary</u>	<u>Federal</u>	<u>Total</u>
2330 Tax Assessment and Collection Services				
100 Personnel Services – Salaries				
100 Personnel Services – Salaries				76,742.00
Total Personnel Services – Salaries				\$76,742.00
200 Personnel Services – Employee Benefits				
220 Social Security Contributions				5,870.79
260 Workers’ Compensation				331.23
Total Personnel Services – Employee Benefits				\$6,202.02
300 Purchased Professional and Technical Services				
310 Official / Administrative Services				39,664.73
330 Other Professional Services				153,618.84
Total Purchased Professional and Technical Services				\$193,283.57
500 Other Purchased Services				
530 Communications				13,592.49
580 Travel				5,720.11
Total Other Purchased Services				\$19,312.60
800 Other Objects				
890 Miscellaneous Expenditures				5,051.53
Total Other Objects				\$5,051.53
Total 2330 Tax Assessment and Collection Services				\$300,591.72

General Fund (10)

2350 Legal and Accounting Services

Elementary

Secondary

Federal

Total

300 Purchased Professional and Technical Services

330 Other Professional Services

48,729.24

Total Purchased Professional and Technical Services

\$48,729.24

Total 2350 Legal and Accounting Services

\$48,729.24

General Fund (10)

	<u>Elementary</u>	<u>Secondary</u>	<u>Federal</u>	<u>Total</u>
2360 Office of the Superintendent / Executive Director Services				
100 Personnel Services – Salaries				
100 Personnel Services – Salaries				260,587.84
Total Personnel Services – Salaries				\$260,587.84
200 Personnel Services – Employee Benefits				
210 Group Insurance – Contracted Provider				97,591.88
220 Social Security Contributions				19,817.12
230 PSERS Retirement Contributions				79,691.04
250 Unemployment Compensation				393.89
260 Workers' Compensation				1,533.79
Total Personnel Services – Employee Benefits				\$199,027.72
300 Purchased Professional and Technical Services				
324 Professional Educational Services – Employee Training and Development Services				450.00
329 Professional Educational Services – Other				6,560.00
330 Other Professional Services				2,750.00
Total Purchased Professional and Technical Services				\$9,760.00
500 Other Purchased Services				
530 Communications	10,523.49	10,508.47		21,031.96
580 Travel				3,249.59
Total Other Purchased Services	\$10,523.49	\$10,508.47		\$24,281.55
600 Supplies				
610 General Supplies				4,370.88
640 Books and Periodicals				130.77
Total Supplies				\$4,501.65
800 Other Objects				
810 Dues and Fees				4,747.00
Total Other Objects				\$4,747.00
Total 2360 Office of the Superintendent / Executive Director Services	\$10,523.49	\$10,508.47		\$502,905.76

General Fund (10)

2370 Community Relations Services

	<u>Elementary</u>	<u>Secondary</u>	<u>Federal</u>	<u>Total</u>
--	-------------------	------------------	----------------	--------------

100 Personnel Services – Salaries

100 Personnel Services – Salaries				125,393.57
-----------------------------------	--	--	--	------------

Total Personnel Services – Salaries				\$125,393.57
--	--	--	--	---------------------

200 Personnel Services – Employee Benefits

210 Group Insurance – Contracted Provider				35,156.37
---	--	--	--	-----------

220 Social Security Contributions				9,201.98
-----------------------------------	--	--	--	----------

230 PSERS Retirement Contributions				31,918.38
------------------------------------	--	--	--	-----------

250 Unemployment Compensation				31.06
-------------------------------	--	--	--	-------

260 Workers' Compensation				542.10
---------------------------	--	--	--	--------

Total Personnel Services – Employee Benefits				\$76,849.89
---	--	--	--	--------------------

300 Purchased Professional and Technical Services

329 Professional Educational Services – Other				62,124.28
---	--	--	--	-----------

Total Purchased Professional and Technical Services				\$62,124.28
--	--	--	--	--------------------

500 Other Purchased Services

530 Communications				1,083.05
--------------------	--	--	--	----------

550 Printing and Binding				59,379.25
--------------------------	--	--	--	-----------

Total Other Purchased Services				\$60,462.30
---------------------------------------	--	--	--	--------------------

600 Supplies

610 General Supplies				12,805.06
----------------------	--	--	--	-----------

Total Supplies				\$12,805.06
-----------------------	--	--	--	--------------------

800 Other Objects

810 Dues and Fees				3,205.06
-------------------	--	--	--	----------

Total Other Objects				\$3,205.06
----------------------------	--	--	--	-------------------

Total 2370 Community Relations Services				\$340,840.16
--	--	--	--	---------------------

LEA : 104107903 Seneca Valley SD

Printed 4/28/2017 11:48:41 AM

Page - 21 of 51

General Fund (10)**2380 Office of the Principal Services**

	<u>Elementary</u>	<u>Secondary</u>	<u>Federal</u>	<u>Total</u>
100 Personnel Services – Salaries				
100 Personnel Services – Salaries	1,346,473.50	1,265,899.37		2,612,372.87
Total Personnel Services – Salaries	\$1,346,473.50	\$1,265,899.37		\$2,612,372.87
200 Personnel Services – Employee Benefits				
210 Group Insurance – Contracted Provider	428,829.36	388,320.93		817,150.29
220 Social Security Contributions	100,419.78	99,953.87		200,373.65
230 PSERS Retirement Contributions	339,592.62	338,396.78		677,989.40
240 Tuition Reimbursement	4,182.00	19,407.91		23,589.91
250 Unemployment Compensation	(43.21)	2,457.82		2,414.61
260 Workers' Compensation	4,752.97	6,542.54		11,295.51
Total Personnel Services – Employee Benefits	\$877,733.52	\$855,079.85		\$1,732,813.37
300 Purchased Professional and Technical Services				
324 Professional Educational Services – Employee Training and Development Services	2,511.80	4,946.90		7,458.70
330 Other Professional Services		1,875.00		1,875.00
Total Purchased Professional and Technical Services	\$2,511.80	\$6,821.90		\$9,333.70
400 Purchased Property Services				
430 Repairs and Maintenance Services	325.00			325.00
Total Purchased Property Services	\$325.00			\$325.00
500 Other Purchased Services				
530 Communications	11,174.20	9,061.60		20,235.80
550 Printing and Binding	444.90	356.70		801.60
580 Travel	1,521.36	5,055.00		6,576.36
Total Other Purchased Services	\$13,140.46	\$14,473.30		\$27,613.76
600 Supplies				
610 General Supplies	5,157.67	6,336.41		11,494.08
640 Books and Periodicals	125.00	100.60		225.60
Total Supplies	\$5,282.67	\$6,437.01		\$11,719.68
700 Property				
750 Equipment – Original and Additional	1,500.00	632.95		2,132.95
760 Equipment – Replacement	634.35	42.39		676.74
Total Property	\$2,134.35	\$675.34		\$2,809.69
800 Other Objects				
810 Dues and Fees	6,935.00	6,458.90		13,393.90
Total Other Objects	\$6,935.00	\$6,458.90		\$13,393.90
Total 2380 Office of the Principal Services	\$2,254,536.30	\$2,155,845.67		\$4,410,381.97

General Fund (10)

	<u>Elementary</u>	<u>Secondary</u>	<u>Federal</u>	<u>Total</u>
2400 Support Services – Pupil Health				
100 Personnel Services – Salaries				
100 Personnel Services – Salaries				614,490.46
Total Personnel Services – Salaries				\$614,490.46
200 Personnel Services – Employee Benefits				
210 Group Insurance – Contracted Provider				172,908.13
220 Social Security Contributions				46,409.43
230 PSERS Retirement Contributions				156,673.65
250 Unemployment Compensation				434.76
260 Workers' Compensation				3,237.08
Total Personnel Services – Employee Benefits				\$379,663.05
300 Purchased Professional and Technical Services				
330 Other Professional Services				1,579.51
Total Purchased Professional and Technical Services				\$1,579.51
600 Supplies				
610 General Supplies				9,808.88
Total Supplies				\$9,808.88
Total 2400 Support Services – Pupil Health				\$1,005,541.90

General Fund (10)

2420 Medical Services

Elementary

Secondary

Federal

Total

300 Purchased Professional and Technical Services

330 Other Professional Services

869.51

Total Purchased Professional and Technical Services

\$869.51

600 Supplies

610 General Supplies

9,808.88

Total Supplies

\$9,808.88

Total 2420 Medical Services

\$10,678.39

General Fund (10)

2430 Dental Services

Elementary

Secondary

Federal

Total

300 Purchased Professional and Technical Services

330 Other Professional Services

710.00

Total Purchased Professional and Technical Services

\$710.00

Total 2430 Dental Services

\$710.00

General Fund (10)

2440 Nursing Services

Elementary

Secondary

Federal

Total

100 Personnel Services – Salaries

100 Personnel Services – Salaries

614,490.46

Total Personnel Services – Salaries

\$614,490.46

200 Personnel Services – Employee Benefits

210 Group Insurance – Contracted Provider

172,908.13

220 Social Security Contributions

46,409.43

230 PSERS Retirement Contributions

156,673.65

250 Unemployment Compensation

434.76

260 Workers' Compensation

3,237.08

Total Personnel Services – Employee Benefits

\$379,663.05

Total 2440 Nursing Services

\$994,153.51

LEA : 104107903 Seneca Valley SD

Printed 4/28/2017 11:48:41 AM

General Fund (10)

	<u>Elementary</u>	<u>Secondary</u>	<u>Federal</u>	<u>Total</u>
2500 Support Services – Business				
100 Personnel Services – Salaries				
100 Personnel Services – Salaries				341,651.35
Total Personnel Services – Salaries				\$341,651.35
200 Personnel Services – Employee Benefits				
210 Group Insurance – Contracted Provider				98,932.37
220 Social Security Contributions				25,905.43
230 PSERS Retirement Contributions				87,787.45
250 Unemployment Compensation				45.34
260 Workers' Compensation				1,174.88
Total Personnel Services – Employee Benefits				\$213,845.47
300 Purchased Professional and Technical Services				
324 Professional Educational Services – Employee Training and Development Services				385.00
329 Professional Educational Services – Other				4,636.00
Total Purchased Professional and Technical Services				\$5,021.00
500 Other Purchased Services				
580 Travel				568.95
Total Other Purchased Services				\$568.95
600 Supplies				
610 General Supplies				4,134.58
Total Supplies				\$4,134.58
800 Other Objects				
810 Dues and Fees				901.03
Total Other Objects				\$901.03
Total 2500 Support Services – Business				\$566,122.38

General Fund (10)

2510 Fiscal Services

	<u>Elementary</u>	<u>Secondary</u>	<u>Federal</u>	<u>Total</u>
100 Personnel Services – Salaries				
100 Personnel Services – Salaries				341,651.35
Total Personnel Services – Salaries				\$341,651.35
200 Personnel Services – Employee Benefits				
210 Group Insurance – Contracted Provider				98,932.37
220 Social Security Contributions				25,905.43
230 PSERS Retirement Contributions				87,787.45
250 Unemployment Compensation				45.34
260 Workers' Compensation				1,174.88
Total Personnel Services – Employee Benefits				\$213,845.47
300 Purchased Professional and Technical Services				
324 Professional Educational Services – Employee Training and Development Services				385.00
329 Professional Educational Services – Other				4,636.00
Total Purchased Professional and Technical Services				\$5,021.00
500 Other Purchased Services				
580 Travel				568.95
Total Other Purchased Services				\$568.95
600 Supplies				
610 General Supplies				4,134.58
Total Supplies				\$4,134.58
800 Other Objects				
810 Dues and Fees				901.03
Total Other Objects				\$901.03
Total 2510 Fiscal Services				\$566,122.38

General Fund (10)

2511 Supervision of Fiscal Services - Head of Component

	<u>Elementary</u>	<u>Secondary</u>	<u>Federal</u>	<u>Total</u>
100 Personnel Services – Salaries				
100 Personnel Services – Salaries				150,175.16
Total Personnel Services – Salaries				\$150,175.16
200 Personnel Services – Employee Benefits				
210 Group Insurance – Contracted Provider				53,517.43
220 Social Security Contributions				11,509.95
230 PSERS Retirement Contributions				40,894.66
260 Workers' Compensation				171.16
Total Personnel Services – Employee Benefits				\$106,093.20
300 Purchased Professional and Technical Services				
324 Professional Educational Services – Employee Training and Development Services				385.00
329 Professional Educational Services – Other				4,636.00
Total Purchased Professional and Technical Services				\$5,021.00
500 Other Purchased Services				
580 Travel				568.95
Total Other Purchased Services				\$568.95
600 Supplies				
610 General Supplies				2,539.58
Total Supplies				\$2,539.58
800 Other Objects				
810 Dues and Fees				901.03
Total Other Objects				\$901.03
Total 2511 Supervision of Fiscal Services - Head of Component				\$265,298.92

General Fund (10)

2513 Receiving and Disbursing Funds Services

Elementary

Secondary

Federal

Total

100 Personnel Services – Salaries

100 Personnel Services – Salaries

33,128.39

Total Personnel Services – Salaries

\$33,128.39

200 Personnel Services – Employee Benefits

210 Group Insurance – Contracted Provider

21,610.86

220 Social Security Contributions

2,450.74

230 PSERS Retirement Contributions

8,512.89

250 Unemployment Compensation

8.86

260 Workers' Compensation

204.36

Total Personnel Services – Employee Benefits

\$32,787.71

600 Supplies

610 General Supplies

565.00

Total Supplies

\$565.00

Total 2513 Receiving and Disbursing Funds Services

\$66,481.10

General Fund (10)

2514 Payroll Services

100 Personnel Services – Salaries

100 Personnel Services – Salaries

Elementary

Secondary

Federal

Total

58,082.62

Total Personnel Services – Salaries

\$58,082.62

200 Personnel Services – Employee Benefits

210 Group Insurance – Contracted Provider

1,136.16

220 Social Security Contributions

4,399.86

230 PSERS Retirement Contributions

13,761.02

250 Unemployment Compensation

14.01

260 Workers' Compensation

356.61

Total Personnel Services – Employee Benefits

\$19,667.66

Total 2514 Payroll Services

\$77,750.28

General Fund (10)

2515 Financial Accounting Services

Elementary

Secondary

Federal

Total

100 Personnel Services – Salaries

100 Personnel Services – Salaries

72,444.68

Total Personnel Services – Salaries

\$72,444.68

200 Personnel Services – Employee Benefits

210 Group Insurance – Contracted Provider

1,057.06

220 Social Security Contributions

5,488.62

230 PSERS Retirement Contributions

17,438.48

250 Unemployment Compensation

15.04

260 Workers' Compensation

442.75

Total Personnel Services – Employee Benefits

\$24,441.95

600 Supplies

610 General Supplies

565.00

Total Supplies

\$565.00

Total 2515 Financial Accounting Services

\$97,451.63

General Fund (10)

2519 Other Fiscal Services

Elementary

Secondary

Federal

Total

100 Personnel Services – Salaries

100 Personnel Services – Salaries

27,820.50

Total Personnel Services – Salaries

\$27,820.50

200 Personnel Services – Employee Benefits

210 Group Insurance – Contracted Provider

21,610.86

220 Social Security Contributions

2,056.26

230 PSERS Retirement Contributions

7,180.40

250 Unemployment Compensation

7.43

Total Personnel Services – Employee Benefits

\$30,854.95

600 Supplies

610 General Supplies

465.00

Total Supplies

\$465.00

Total 2519 Other Fiscal Services

\$59,140.45

General Fund (10)

	<u>Elementary</u>	<u>Secondary</u>	<u>Federal</u>	<u>Total</u>
2600 Operation and Maintenance of Plant Services				
100 Personnel Services – Salaries				
100 Personnel Services – Salaries				1,670,696.37
Total Personnel Services – Salaries				\$1,670,696.37
200 Personnel Services – Employee Benefits				
210 Group Insurance – Contracted Provider				515,353.18
220 Social Security Contributions				127,588.36
230 PSERS Retirement Contributions				429,963.29
250 Unemployment Compensation				464.02
260 Workers' Compensation				7,322.16
Total Personnel Services – Employee Benefits				\$1,080,691.01
300 Purchased Professional and Technical Services				
329 Professional Educational Services – Other				353,103.57
390 Other Purchased Professional and Technical Services				16,356.00
Total Purchased Professional and Technical Services				\$369,459.57
400 Purchased Property Services				
410 Cleaning Services				1,717,922.22
420 Utility Services				678,513.55
430 Repairs and Maintenance Services				436,925.97
440 Rentals				9,840.00
490 Other Purchased Property Services				5,483.28
Total Purchased Property Services				\$2,848,685.02
500 Other Purchased Services				
521 Fire Insurance				145,303.00
522 Automotive Liability Insurance				8,020.00
523 General Property and Liability Insurance				10,272.00
530 Communications				103,002.52
580 Travel				75.60
Total Other Purchased Services				\$266,673.12
600 Supplies				
610 General Supplies	135,749.02	201,208.24		336,957.26
620 Energy				148,905.82
Total Supplies	\$135,749.02	\$201,208.24		\$485,863.08
700 Property				
750 Equipment – Original and Additional				128,650.24
Total Property				\$128,650.24
800 Other Objects				
810 Dues and Fees				10,140.00
Total Other Objects				\$10,140.00
Total 2600 Operation and Maintenance of Plant Services	\$135,749.02	\$201,208.24		\$6,860,858.41

General Fund (10)

	<u>Elementary</u>	<u>Secondary</u>	<u>Federal</u>	<u>Total</u>
2610 Supervision of Operation and Maintenance of Plant Services				
100 Personnel Services – Salaries				
100 Personnel Services – Salaries				164,548.53
Total Personnel Services – Salaries				\$164,548.53
200 Personnel Services – Employee Benefits				
210 Group Insurance – Contracted Provider				30,190.59
220 Social Security Contributions				12,174.61
230 PSERS Retirement Contributions				41,197.50
250 Unemployment Compensation				38.65
260 Workers' Compensation				108.94
Total Personnel Services – Employee Benefits				\$83,710.29
Total 2610 Supervision of Operation and Maintenance of Plant Services				\$248,258.82

General Fund (10)

	<u>Elementary</u>	<u>Secondary</u>	<u>Federal</u>	<u>Total</u>
2611 Supervision of Operation and Maintenance of Plant Services – Head of Component				
100 Personnel Services – Salaries				
100 Personnel Services – Salaries				114,598.11
Total Personnel Services – Salaries				\$114,598.11
200 Personnel Services – Employee Benefits				
210 Group Insurance – Contracted Provider				22,433.49
220 Social Security Contributions				8,589.78
230 PSERS Retirement Contributions				29,021.71
250 Unemployment Compensation				26.08
260 Workers' Compensation				108.94
Total Personnel Services – Employee Benefits				\$60,180.00
Total 2611 Supervision of Operation and Maintenance of Plant Services – Head of Component				\$174,778.11

General Fund (10)

2619 Supervision of Operation and Maintenance of Plant Services – All Other Supervision

Elementary

Secondary

Federal

Total

100 Personnel Services – Salaries

100 Personnel Services – Salaries

49,950.42

Total Personnel Services – Salaries

\$49,950.42

200 Personnel Services – Employee Benefits

210 Group Insurance – Contracted Provider

7,757.10

220 Social Security Contributions

3,584.83

230 PSERS Retirement Contributions

12,175.79

250 Unemployment Compensation

12.57

Total Personnel Services – Employee Benefits

\$23,530.29

Total 2619 Supervision of Operation and Maintenance of Plant Services – All Other Supervision

\$73,480.71

LEA : 104107903 Seneca Valley SD

Printed 4/28/2017 11:48:41 AM

General Fund (10)

	<u>Elementary</u>	<u>Secondary</u>	<u>Federal</u>	<u>Total</u>
2620 Operation of Buildings Services				
100 Personnel Services – Salaries				
100 Personnel Services – Salaries				1,506,147.84
Total Personnel Services – Salaries				\$1,506,147.84
200 Personnel Services – Employee Benefits				
210 Group Insurance – Contracted Provider				485,162.59
220 Social Security Contributions				115,413.75
230 PSERS Retirement Contributions				388,765.79
250 Unemployment Compensation				425.37
260 Workers' Compensation				7,213.22
Total Personnel Services – Employee Benefits				\$996,980.72
300 Purchased Professional and Technical Services				
390 Other Purchased Professional and Technical Services				16,356.00
Total Purchased Professional and Technical Services				\$16,356.00
400 Purchased Property Services				
410 Cleaning Services				1,717,922.22
420 Utility Services				678,513.55
430 Repairs and Maintenance Services				436,925.97
440 Rentals				9,840.00
490 Other Purchased Property Services				5,483.28
Total Purchased Property Services				\$2,848,685.02
500 Other Purchased Services				
521 Fire Insurance				145,303.00
522 Automotive Liability Insurance				8,020.00
523 General Property and Liability Insurance				10,272.00
530 Communications				103,002.52
580 Travel				75.60
Total Other Purchased Services				\$266,673.12
600 Supplies				
610 General Supplies	135,749.02	201,208.24		336,957.26
620 Energy				141,933.71
Total Supplies	\$135,749.02	\$201,208.24		\$478,890.97
700 Property				
750 Equipment – Original and Additional				128,650.24
Total Property				\$128,650.24
800 Other Objects				
810 Dues and Fees				10,140.00
Total Other Objects				\$10,140.00
Total 2620 Operation of Buildings Services	\$135,749.02	\$201,208.24		\$6,252,523.91

General Fund (10)

	<u>Elementary</u>	<u>Secondary</u>	<u>Federal</u>	<u>Total</u>
2650 Vehicle Operation and Maintenance Services (Other Than Student Transportation Vehicles)				
600 <u>Supplies</u>				
620 Energy				6,972.11
Total Supplies				\$6,972.11
Total 2650 Vehicle Operation and Maintenance Services (Other Than Student Transportation Vehicles)				\$6,972.11

General Fund (10)

2660 Safety and Security Services

Elementary

Secondary

Federal

Total

300 Purchased Professional and Technical Services

329 Professional Educational Services – Other

353,103.57

Total Purchased Professional and Technical Services

\$353,103.57

Total 2660 Safety and Security Services

\$353,103.57

General Fund (10)

2700 Student Transportation Services

	<u>Elementary</u>	<u>Secondary</u>	<u>Federal</u>	<u>Total</u>
--	-------------------	------------------	----------------	--------------

100 Personnel Services – Salaries

100 Personnel Services – Salaries				129,262.98
-----------------------------------	--	--	--	------------

Total Personnel Services – Salaries				\$129,262.98
--	--	--	--	---------------------

200 Personnel Services – Employee Benefits

210 Group Insurance – Contracted Provider				59,494.30
---	--	--	--	-----------

220 Social Security Contributions				9,762.29
-----------------------------------	--	--	--	----------

230 PSERS Retirement Contributions				32,821.73
------------------------------------	--	--	--	-----------

250 Unemployment Compensation				37.53
-------------------------------	--	--	--	-------

260 Workers' Compensation				242.58
---------------------------	--	--	--	--------

Total Personnel Services – Employee Benefits				\$102,358.43
---	--	--	--	---------------------

300 Purchased Professional and Technical Services

324 Professional Educational Services – Employee Training and Development Services				274.00
--	--	--	--	--------

329 Professional Educational Services – Other				5,000.00
---	--	--	--	----------

330 Other Professional Services				1,500.00
---------------------------------	--	--	--	----------

Total Purchased Professional and Technical Services				\$6,774.00
--	--	--	--	-------------------

500 Other Purchased Services

513 Contracted Carriers				6,929,107.75
-------------------------	--	--	--	--------------

516 Student Transportation Services From the IU				10,582.09
---	--	--	--	-----------

530 Communications				888.38
--------------------	--	--	--	--------

580 Travel				1,464.99
------------	--	--	--	----------

Total Other Purchased Services				\$6,942,043.21
---------------------------------------	--	--	--	-----------------------

600 Supplies

610 General Supplies				1,442.65
----------------------	--	--	--	----------

620 Energy				372,605.72
------------	--	--	--	------------

Total Supplies				\$374,048.37
-----------------------	--	--	--	---------------------

Total 2700 Student Transportation Services				\$7,554,486.99
---	--	--	--	-----------------------

General Fund (10)

2710 Supervision of Student Transportation Services

Elementary

Secondary

Federal

Total

100 Personnel Services – Salaries

100 Personnel Services – Salaries

129,262.98

Total Personnel Services – Salaries

\$129,262.98

200 Personnel Services – Employee Benefits

210 Group Insurance – Contracted Provider

59,494.30

220 Social Security Contributions

9,762.29

230 PSERS Retirement Contributions

32,821.73

250 Unemployment Compensation

37.53

260 Workers' Compensation

242.58

Total Personnel Services – Employee Benefits

\$102,358.43

300 Purchased Professional and Technical Services

324 Professional Educational Services – Employee Training and Development Services

274.00

329 Professional Educational Services – Other

5,000.00

330 Other Professional Services

1,500.00

Total Purchased Professional and Technical Services

\$6,774.00

600 Supplies

610 General Supplies

894.84

Total Supplies

\$894.84

Total 2710 Supervision of Student Transportation Services

\$239,290.25

General Fund (10)

	<u>Elementary</u>	<u>Secondary</u>	<u>Federal</u>	<u>Total</u>
2711 Supervision of Student Transportation Services – Head of Component				
100 Personnel Services – Salaries				
100 Personnel Services – Salaries				84,881.59
Total Personnel Services – Salaries				\$84,881.59
200 Personnel Services – Employee Benefits				
210 Group Insurance – Contracted Provider				38,777.40
220 Social Security Contributions				7,329.40
230 PSERS Retirement Contributions				24,405.12
260 Workers' Compensation				55.98
Total Personnel Services – Employee Benefits				\$70,567.90
300 Purchased Professional and Technical Services				
324 Professional Educational Services – Employee Training and Development Services				274.00
329 Professional Educational Services – Other				5,000.00
330 Other Professional Services				1,500.00
Total Purchased Professional and Technical Services				\$6,774.00
600 Supplies				
610 General Supplies				894.84
Total Supplies				\$894.84
Total 2711 Supervision of Student Transportation Services – Head of Component				\$163,118.33

General Fund (10)

2719 Supervision of Student Transportation Services – All Other Supervision

Elementary

Secondary

Federal

Total

100 Personnel Services – Salaries

100 Personnel Services – Salaries

44,381.39

Total Personnel Services – Salaries

\$44,381.39

200 Personnel Services – Employee Benefits

210 Group Insurance – Contracted Provider

20,716.90

220 Social Security Contributions

2,432.89

230 PSERS Retirement Contributions

8,416.61

250 Unemployment Compensation

37.53

260 Workers' Compensation

186.60

Total Personnel Services – Employee Benefits

\$31,790.53

Total 2719 Supervision of Student Transportation Services – All Other Supervision

\$76,171.92

LEA : 104107903 Seneca Valley SD

Printed 4/28/2017 11:48:41 AM

General Fund (10)

2720 Vehicle Operation Services

Elementary

Secondary

Federal

Total

500 Other Purchased Services

513 Contracted Carriers

5,418,425.48

516 Student Transportation Services From the IU

10,582.09

530 Communications

888.38

580 Travel

1,464.99

Total Other Purchased Services

\$5,431,360.94

600 Supplies

610 General Supplies

547.81

620 Energy

372,605.72

Total Supplies

\$373,153.53

Total 2720 Vehicle Operation Services

\$5,804,514.47

LEA : 104107903 Seneca Valley SD

Printed 4/28/2017 11:48:41 AM

General Fund (10)

	<u>Elementary</u>	<u>Secondary</u>	<u>Federal</u>	<u>Total</u>
2750 Nonpublic Transportation				
500 <u>Other Purchased Services</u>				
513 Contracted Carriers				1,510,682.27
Total Other Purchased Services				\$1,510,682.27
Total 2750 Nonpublic Transportation				\$1,510,682.27

General Fund (10)

2800 Support Services – Central

Elementary Secondary Federal Total

100 Personnel Services – Salaries

100 Personnel Services – Salaries 336,367.45

Total Personnel Services – Salaries \$336,367.45

200 Personnel Services – Employee Benefits

210 Group Insurance – Contracted Provider 64,399.91

220 Social Security Contributions 13,716.76

230 PSERS Retirement Contributions 46,236.84

250 Unemployment Compensation 209.80

260 Workers' Compensation 848.18

Total Personnel Services – Employee Benefits \$125,411.49

300 Purchased Professional and Technical Services

324 Professional Educational Services – Employee Training and Development Services 235.00

329 Professional Educational Services – Other 4,543.14

Total Purchased Professional and Technical Services \$4,778.14

500 Other Purchased Services

580 Travel 394.24

Total Other Purchased Services \$394.24

600 Supplies

610 General Supplies 1,918.20

640 Books and Periodicals 500.00

Total Supplies \$2,418.20

800 Other Objects

810 Dues and Fees 825.00

Total Other Objects \$825.00

Total 2800 Support Services – Central \$470,194.52

General Fund (10)

2810 Planning, Research, Development and Evaluation Services

Elementary

Secondary

Federal

Total

100 Personnel Services – Salaries

100 Personnel Services – Salaries

74,992.00

Total Personnel Services – Salaries

\$74,992.00

Total 2810 Planning, Research, Development and Evaluation Services

\$74,992.00

General Fund (10)

2830 Staff Services

	<u>Elementary</u>	<u>Secondary</u>	<u>Federal</u>	<u>Total</u>
100 Personnel Services – Salaries				
100 Personnel Services – Salaries				261,375.45
Total Personnel Services – Salaries				\$261,375.45
200 Personnel Services – Employee Benefits				
210 Group Insurance – Contracted Provider				64,399.91
220 Social Security Contributions				13,716.76
230 PSERS Retirement Contributions				46,236.84
250 Unemployment Compensation				209.80
260 Workers' Compensation				848.18
Total Personnel Services – Employee Benefits				\$125,411.49
300 Purchased Professional and Technical Services				
324 Professional Educational Services – Employee Training and Development Services				235.00
329 Professional Educational Services – Other				4,543.14
Total Purchased Professional and Technical Services				\$4,778.14
500 Other Purchased Services				
580 Travel				394.24
Total Other Purchased Services				\$394.24
600 Supplies				
610 General Supplies				1,918.20
640 Books and Periodicals				500.00
Total Supplies				\$2,418.20
800 Other Objects				
810 Dues and Fees				825.00
Total Other Objects				\$825.00
Total 2830 Staff Services				\$395,202.52

General Fund (10)

	<u>Elementary</u>	<u>Secondary</u>	<u>Federal</u>	<u>Total</u>
2831 Supervision of Staff Services				
100 Personnel Services – Salaries				
100 Personnel Services – Salaries				261,375.45
Total Personnel Services – Salaries				\$261,375.45
200 Personnel Services – Employee Benefits				
210 Group Insurance – Contracted Provider				64,399.91
220 Social Security Contributions				13,716.76
230 PSERS Retirement Contributions				46,236.84
250 Unemployment Compensation				209.80
260 Workers' Compensation				848.18
Total Personnel Services – Employee Benefits				\$125,411.49
300 Purchased Professional and Technical Services				
324 Professional Educational Services – Employee Training and Development Services				235.00
329 Professional Educational Services – Other				4,543.14
Total Purchased Professional and Technical Services				\$4,778.14
500 Other Purchased Services				
580 Travel				394.24
Total Other Purchased Services				\$394.24
600 Supplies				
610 General Supplies				1,918.20
640 Books and Periodicals				500.00
Total Supplies				\$2,418.20
800 Other Objects				
810 Dues and Fees				825.00
Total Other Objects				\$825.00
Total 2831 Supervision of Staff Services				\$395,202.52

General Fund (10)

	<u>Elementary</u>	<u>Secondary</u>	<u>Federal</u>	<u>Total</u>
2900 Other Support Services				
100 Personnel Services – Salaries				
100 Personnel Services – Salaries				431,948.63
Total Personnel Services – Salaries				\$431,948.63
200 Personnel Services – Employee Benefits				
210 Group Insurance – Contracted Provider				115,193.19
220 Social Security Contributions				32,181.89
230 PSERS Retirement Contributions				110,355.89
250 Unemployment Compensation				103.63
260 Workers' Compensation				1,186.64
Total Personnel Services – Employee Benefits				\$259,021.24
300 Purchased Professional and Technical Services				
324 Professional Educational Services – Employee Training and Development Services				1,524.60
340 Technical Services				106,921.77
Total Purchased Professional and Technical Services				\$108,446.37
400 Purchased Property Services				
430 Repairs and Maintenance Services				9,748.57
Total Purchased Property Services				\$9,748.57
500 Other Purchased Services				
580 Travel				306.62
595 IU Payments By Withholding				130,028.37
Total Other Purchased Services				\$130,334.99
600 Supplies				
610 General Supplies				360,974.46
640 Books and Periodicals				332,299.16
Total Supplies				\$693,273.62
700 Property				
750 Equipment – Original and Additional				124,048.50
760 Equipment – Replacement				552,578.01
Total Property				\$676,626.51
Total 2900 Other Support Services				\$2,309,399.93

General Fund (10)

2910 Support Services Not Listed Elsewhere In the 2000 Series

Elementary Secondary Federal Total

100 Personnel Services – Salaries				
100 Personnel Services – Salaries				431,948.63
Total Personnel Services – Salaries				\$431,948.63
200 Personnel Services – Employee Benefits				
210 Group Insurance – Contracted Provider				115,193.19
220 Social Security Contributions				32,181.89
230 PSERS Retirement Contributions				110,355.89
250 Unemployment Compensation				103.63
260 Workers' Compensation				1,186.64
Total Personnel Services – Employee Benefits				\$259,021.24
300 Purchased Professional and Technical Services				
324 Professional Educational Services – Employee Training and Development Services				1,524.60
340 Technical Services				106,921.77
Total Purchased Professional and Technical Services				\$108,446.37
400 Purchased Property Services				
430 Repairs and Maintenance Services				9,748.57
Total Purchased Property Services				\$9,748.57
500 Other Purchased Services				
580 Travel				306.62
595 IU Payments By Withholding				130,028.37
Total Other Purchased Services				\$130,334.99
600 Supplies				
610 General Supplies				360,974.46
640 Books and Periodicals				332,299.16
Total Supplies				\$693,273.62
700 Property				
750 Equipment – Original and Additional				124,048.50
760 Equipment – Replacement				552,578.01
Total Property				\$676,626.51
Total 2910 Support Services Not Listed Elsewhere In the 2000 Series				\$2,309,399.93

LEA : 104107903 Seneca Valley SD

Printed 4/28/2017 11:48:44 AM

General Fund (10)

3000 Operation of Non-Instructional Services

Total

100 Personnel Services – Salaries

100 Personnel Services – Salaries 950,496.99

Total Personnel Services – Salaries \$950,496.99

200 Personnel Services – Employee Benefits

210 Group Insurance – Contracted Provider 34,818.49

220 Social Security Contributions 74,719.65

230 PSERS Retirement Contributions 242,647.25

250 Unemployment Compensation 723.12

260 Workers' Compensation 1,967.49

Total Personnel Services – Employee Benefits \$354,876.00

300 Purchased Professional and Technical Services

323 Professional Educational Services – Other Educational Agencies 3,545.22

324 Professional Educational Services – Employee Training and Development Services 5,304.00

330 Other Professional Services 103,320.24

Total Purchased Professional and Technical Services \$112,169.46

400 Purchased Property Services

410 Cleaning Services 3,891.80

430 Repairs and Maintenance Services 17,406.23

440 Rentals 6,870.00

Total Purchased Property Services \$28,168.03

500 Other Purchased Services

510 Student Transportation Services 118,293.95

530 Communications 655.81

550 Printing and Binding 829.22

580 Travel 2,502.81

591 Services Purchased Locally 4,123.47

Total Other Purchased Services \$126,405.26

600 Supplies

610 General Supplies 94,868.89

Total Supplies \$94,868.89

700 Property

750 Equipment – Original and Additional 50,038.01

760 Equipment – Replacement 7,501.80

Total Property \$57,539.81

800 Other Objects

810 Dues and Fees 206,217.78

Total Other Objects \$206,217.78

Total 3000 Operation of Non-Instructional Services \$1,930,742.22

General Fund (10)

3200 Student Activities

Elementary Secondary Federal Total

100	<u>Personnel Services – Salaries</u>			
	100 Personnel Services – Salaries			950,496.99
Total Personnel Services – Salaries				\$950,496.99
200	<u>Personnel Services – Employee Benefits</u>			
	210 Group Insurance – Contracted Provider			34,818.49
	220 Social Security Contributions			74,719.65
	230 PSERS Retirement Contributions			242,647.25
	250 Unemployment Compensation			723.12
	260 Workers' Compensation			1,967.49
Total Personnel Services – Employee Benefits				\$354,876.00
300	<u>Purchased Professional and Technical Services</u>			
	323 Professional Educational Services – Other Educational Agencies			3,545.22
	324 Professional Educational Services – Employee Training and Development Services			5,304.00
	330 Other Professional Services			103,320.24
Total Purchased Professional and Technical Services				\$112,169.46
400	<u>Purchased Property Services</u>			
	410 Cleaning Services			3,891.80
	430 Repairs and Maintenance Services			17,406.23
	440 Rentals			6,870.00
Total Purchased Property Services				\$28,168.03
500	<u>Other Purchased Services</u>			
	510 Student Transportation Services			118,293.95
	530 Communications			655.81
	550 Printing and Binding			829.22
	580 Travel			2,502.81
Total Other Purchased Services				\$122,281.79
600	<u>Supplies</u>			
	610 General Supplies			94,868.89
Total Supplies				\$94,868.89
700	<u>Property</u>			
	750 Equipment – Original and Additional			50,038.01
	760 Equipment – Replacement			7,501.80
Total Property				\$57,539.81
800	<u>Other Objects</u>			
	810 Dues and Fees			206,217.78
Total Other Objects				\$206,217.78
Total 3200 Student Activities				\$1,926,618.75

LEA : 104107903 Seneca Valley SD

Printed 4/28/2017 11:48:44 AM

General Fund (10)

3300 Community Services

Elementary

Secondary

Federal

Total

500 Other Purchased Services

591 Services Purchased Locally

4,123.47

Total Other Purchased Services

\$4,123.47

Total 3300 Community Services

\$4,123.47

General Fund (10)

4000 Facilities Acquisition, Construction and Improvement Services

Total

300 Purchased Professional and Technical Services

330 Other Professional Services

14,161.00

Total Purchased Professional and Technical Services

\$14,161.00

Total 4000 Facilities Acquisition, Construction and Improvement Services

\$14,161.00

General Fund (10)

4200 Existing Site Improvement Services

Elementary

Secondary

Federal

Total

300 Purchased Professional and Technical Services

330 Other Professional Services

14,161.00

Total Purchased Professional and Technical Services

\$14,161.00

Total 4200 Existing Site Improvement Services

\$14,161.00

LEA : 104107903 Seneca Valley SD

Printed 4/28/2017 11:48:46 AM

General Fund (10)

5000 Other Expenditures and Financing Uses

Total

800 Other Objects

830 Interest

3,062,515.77

880 Refunds of Prior Years' Receipts

5,044.64

Total Other Objects

\$3,067,560.41

900 Other Uses of Funds

910 Redemption of Principal

6,735,000.00

Total Other Uses of Funds

\$6,735,000.00

Total 5000 Other Expenditures and Financing Uses

\$9,802,560.41

LEA : 104107903 Seneca Valley SD

Printed 4/28/2017 11:48:46 AM

General Fund (10)

5100 Debt Service / Other Expenditures and Financing Uses	<u>Elementary</u>	<u>Secondary</u>	<u>Federal</u>	<u>Total</u>
800 <u>Other Objects</u>				
830 Interest				3,062,515.77
880 Refunds of Prior Years' Receipts				5,044.64
Total Other Objects				\$3,067,560.41
900 <u>Other Uses of Funds</u>				
910 Redemption of Principal				6,735,000.00
Total Other Uses of Funds				\$6,735,000.00
Total 5100 Debt Service / Other Expenditures and Financing Uses				\$9,802,560.41

LEA : 104107903 Seneca Valley SD

Printed 4/28/2017 11:48:46 AM

General Fund (10)

	<u>Elementary</u>	<u>Secondary</u>	<u>Federal</u>	<u>Total</u>
5110 Debt Service				
800 Other Objects				
830 Interest				3,062,515.77
Total Other Objects				\$3,062,515.77
900 Other Uses of Funds				
910 Redemption of Principal				6,735,000.00
Total Other Uses of Funds				\$6,735,000.00
Total 5110 Debt Service				\$9,797,515.77

General Fund (10)

5130 Refund of Prior Year Revenues / Receipts	<u>Elementary</u>	<u>Secondary</u>	<u>Federal</u>	<u>Total</u>
800 <u>Other Objects</u>				
880 Refunds of Prior Years' Receipts				5,044.64
Total Other Objects				\$5,044.64
Total 5130 Refund of Prior Year Revenues / Receipts				\$5,044.64

Other Capital Projects Fund (39)

4000 Facilities Acquisition, Construction and Improvement Services

Total

300 Purchased Professional and Technical Services

330 Other Professional Services

412,917.66

390 Other Purchased Professional and Technical Services

14,060.94

Total Purchased Professional and Technical Services

\$426,978.60

400 Purchased Property Services

450 Construction Services

7,236,445.04

Total Purchased Property Services

\$7,236,445.04

Total 4000 Facilities Acquisition, Construction and Improvement Services

\$7,663,423.64

Other Capital Projects Fund (39)

4400 Architecture and Engineering Services / Educational Specifications – Improvements

Elementary

Secondary

Federal

Total

300 Purchased Professional and Technical Services

330 Other Professional Services

412,917.66

Total Purchased Professional and Technical Services

\$412,917.66

Total 4400 Architecture and Engineering Services / Educational Specifications – Improvements

\$412,917.66

Other Capital Projects Fund (39)

	<u>Elementary</u>	<u>Secondary</u>	<u>Federal</u>	<u>Total</u>
4600 Existing Building Improvement Services				
300 <u>Purchased Professional and Technical Services</u>				
390 Other Purchased Professional and Technical Services				14,060.94
Total Purchased Professional and Technical Services				\$14,060.94
400 <u>Purchased Property Services</u>				
450 Construction Services				7,236,445.04
Total Purchased Property Services				\$7,236,445.04
Total 4600 Existing Building Improvement Services				\$7,250,505.98

	<u>General Fund(10)</u>	<u>Public Purpose Trust(27)</u>	<u>Other Compt Approved (28)</u>	<u>Athletic / Activity(29)</u>	<u>Capital Reserve (690. 1850)(31)</u>
1000 Instruction					
1100 Regular Programs - Elementary / Secondary	48,977,102.48				
1200 Special Programs - Elementary / Secondary	16,557,715.27				
1300 Vocational Education	3,324,541.04				
1400 Other Instructional Programs - Elementary / Secondary	239,349.32				
Total Instruction	\$69,098,708.11				
2000 Support Services					
2100 Support Services - Students	2,918,379.04				
2200 Support Services - Instructional Staff	2,645,140.07				
2300 Support Services - Administration	5,776,931.42				
2400 Support Services - Pupil Health	1,005,541.90				
2500 Support Services - Business	566,122.38				
2600 Operation and Maintenance of Plant Services	6,860,858.41				
2700 Student Transportation Services	7,554,486.99				
2800 Support Services - Central	470,194.52				
2900 Other Support Services	2,309,399.93				
Total Support Services	\$30,107,054.66				
3000 Operation of Non-Instructional Services					
3200 Student Activities	1,926,618.75				
3300 Community Services	4,123.47				
Total Operation of Non-Instructional Services	\$1,930,742.22				
4000 Facilities Acquisition, Construction and Improvement Services					
4200 Existing Site Improvement Services	14,161.00				
4400 Architecture and Engineering Services / Educational Specifications - Improvements					
4600 Existing Building Improvement Services					
Total Facilities Acquisition, Construction and Improvement Services	\$14,161.00				
5000 Other Expenditures and Financing Uses					
5100 Debt Service / Other Expenditures and Financing Uses	9,802,560.41				
Total Other Expenditures and Financing Uses	\$9,802,560.41				
TOTAL ACTUAL EXPENDITURES & OTHER FINANCING USES	\$110,953,226.40				

LEA : 104107903 Seneca Valley SD

Printed 4/28/2017 11:48:48 AM

	<u>Capital Reserve (1431)(32)</u>	<u>Other Capital Projects Fund(39)</u>	<u>Debt Service(40)</u>	<u>Permanent(90)</u>	<u>Total</u>
1000 Instruction					
1100 Regular Programs - Elementary / Secondary					48,977,102.48
1200 Special Programs - Elementary / Secondary					16,557,715.27
1300 Vocational Education					3,324,541.04
1400 Other Instructional Programs - Elementary / Secondary					239,349.32
Total Instruction					\$69,098,708.11
2000 Support Services					
2100 Support Services - Students					2,918,379.04
2200 Support Services - Instructional Staff					2,645,140.07
2300 Support Services - Administration					5,776,931.42
2400 Support Services - Pupil Health					1,005,541.90
2500 Support Services - Business					566,122.38
2600 Operation and Maintenance of Plant Services					6,860,858.41
2700 Student Transportation Services					7,554,486.99
2800 Support Services - Central					470,194.52
2900 Other Support Services					2,309,399.93
Total Support Services					\$30,107,054.66
3000 Operation of Non-Instructional Services					
3200 Student Activities					1,926,618.75
3300 Community Services					4,123.47
Total Operation of Non-Instructional Services					\$1,930,742.22
4000 Facilities Acquisition, Construction and Improvement Services					
4200 Existing Site Improvement Services					14,161.00
4400 Architecture and Engineering Services / Educational Specifications - Improvements		412,917.66			412,917.66
4600 Existing Building Improvement Services		7,250,505.98			7,250,505.98
Total Facilities Acquisition, Construction and Improvement Services		\$7,663,423.64			\$7,677,584.64
5000 Other Expenditures and Financing Uses					
5100 Debt Service / Other Expenditures and Financing Uses					9,802,560.41
Total Other Expenditures and Financing Uses					\$9,802,560.41
TOTAL ACTUAL EXPENDITURES & OTHER FINANCING USES		\$7,663,423.64			\$118,616,650.04

LEA : 104107903 Seneca Valley SD

Printed 4/28/2017 11:48:54 AM

PSERS Salary Data (Salary Data should relate to the General Fund only)

Amount Description	Amount
Total Salary Base for salaries subject to PSERS withholding	48,608,110.93
Total Federally Funded salaries subject to PSERS withholding	565,682.26
	<hr/>

Title I Expenditure Data

Amount Description	Amount
Expenditures Funded with Current Title I Funds	378,858.00
Expenditures Funded with Carry over Title I Funds	
Total Title I Expenditure Data	<hr/> \$378,858.00 <hr/>

Title I ARRA Amount

Amount Description	Amount
Portion of Total Title I Expenditures funded with ARRA Title I	<hr/>

Benefits for Staff Relative to Collective Bargaining Agreements

	OBJECT	COVERED	NOT COVERED	TOTAL
10 General Fund	No Self Insurance data to report			
	211 Medical Insurance	10,445,736.72	752,694.84	11,198,431.56
	212 Dental Insurance	443,818.37	39,292.32	483,110.69
	215 Eye Care Insurance	65,898.21	5,877.00	71,775.21
	216 Prescription Insurance			
	271 Self-Insurance Medical Benefits			
	272 Self-Insurance Dental Benefits			
	275 Self-Insurance Eye Care Benefits			
	276 Self-Insurance Prescription Benefits			
	FUND TOTAL	\$10,955,453.30	\$797,864.16	\$11,753,317.46
50 Enterprise Fund	No Self Insurance data to report			
	211 Medical Insurance		50,770.56	50,770.56
	212 Dental Insurance		1,782.72	1,782.72
	215 Eye Care Insurance		2,937.60	2,937.60
	216 Prescription Insurance			
	271 Self-Insurance Medical Benefits			
	272 Self-Insurance Dental Benefits			
	275 Self-Insurance Eye Care Benefits			
	276 Self-Insurance Prescription Benefits			
	FUND TOTAL		\$55,490.88	\$55,490.88
60 Internal Service Fund	No Self Insurance data to report			
	211 Medical Insurance			
	212 Dental Insurance			
	215 Eye Care Insurance			
	216 Prescription Insurance			
	271 Self-Insurance Medical Benefits			
	272 Self-Insurance Dental Benefits			
	275 Self-Insurance Eye Care Benefits			
	276 Self-Insurance Prescription Benefits			
	FUND TOTAL			
Total of All Funds		\$10,955,453.30	\$853,355.04	\$11,808,808.34

LEA : 104107903 Seneca Valley SD

Printed 4/28/2017 11:48:55 AM

Function	Special Education (Prior Year)	Nonspecial Education (Prior Year)	Total (Prior Year)	Special Education (Current Year)	Nonspecial Education (Current Year)	Total (Current Year)
2120 Guidance Services	288,346.36	1,633,962.74	1,922,309.10	304,301.39	1,724,374.52	2,028,675.91
2140 Psychological Services	71,449.05	722,429.23	793,878.28	73,283.87	740,981.32	814,265.19
2150 Speech Pathology and Audiology Services	5,726.55	32,450.45	38,177.00	3,939.94	22,326.31	26,266.25
2160 Social Work Services						
2260 Instruction and Curriculum Development Services	144,473.95	818,685.73	963,159.68	159,655.37	904,713.74	1,064,369.11
2350 Legal and Accounting Services	6,239.44	35,356.83	41,596.27	7,309.39	41,419.85	48,729.24
2420 Medical Services	3,914.56	9,133.99	13,048.55	3,310.30	7,368.09	10,678.39
2440 Nursing Services	237,219.41	623,511.97	860,731.38	308,187.59	685,965.92	994,153.51
2700 Student Transportation Services	1,118,510.45	5,711,300.25	6,829,810.70	1,291,670.05	6,262,816.94	7,554,486.99
Total	\$1,875,879.77	\$9,586,831.19	\$11,462,710.96	\$2,151,657.90	\$10,389,966.69	\$12,541,624.59

(PRINCIPAL AMOUNTS ONLY)

ALL GOVERNMENTAL FUND TYPES

	Short-Term Borrowing	General Obligation Bonds/Notes	Authority Building Obligations	Other Long-Term Debt	Other Post-Employment Benefits (OPEB)	Compensated Absences	Net Pension Liability	Total
1. Debt at Beginning of Fiscal Year		101,065,000.00			14,919,389.00	792,325.75	139,252,120.00	256,028,834.75
2. Additional Debt Incurred During Year					1,622,019.00	397,986.25	17,342,080.00	19,362,085.25
3. Retirements and Repayments		6,735,000.00				196,923.75		6,931,923.75
4. Debt at End of Fiscal Year		94,330,000.00			16,541,408.00	993,388.25	156,594,200.00	268,458,996.25
5. Accreted Interest at End Of Fiscal Year								
6. Total Debt and Accreted Interest		94,330,000.00			16,541,408.00	993,388.25	156,594,200.00	268,458,996.25
7. Current Portion P&I - Due within 1 year		13,203,650.00						13,203,650.00
8. Interest Paid during current fiscal year		3,062,515.84						3,062,515.84

(PRINCIPAL AMOUNTS ONLY)

ALL PROPRIETARY FUND TYPES

	Short-Term Borrowing	General Obligation Bonds/Notes	Authority Building Obligations	Other Long-Term Debt	Other Post-Employment Benefits (OPEB)	Compensated Absences	Net Pension Liability	Total
1. Debt at Beginning of Fiscal Year							2,841,880.00	2,841,880.00
2. Additional Debt Incurred During Year							353,920.00	353,920.00
3. Retirements and Repayments								
4. Debt at End of Fiscal Year							3,195,800.00	3,195,800.00
5. Accreted Interest at End Of Fiscal Year								
6. Total Debt and Accreted Interest							3,195,800.00	3,195,800.00
7. Current Portion P&I - Due within 1 year								
8. Interest Paid during current fiscal year								

Total Principal and Interest Payments Made by Your School - All Funds

Function	Fund		Principal (910)	Principal (920)	Interest (830)	Total (Principal +Interest)	Misc Other Uses (990)
5110	10	General Fund	6,735,000.00		3,062,515.77	9,797,515.77	
5110	20	Special Revenue Funds					
5110	30	Capital Projects Funds					
5110	40	Debt Service Fund					
5110	90	Permanent Fund					
5120	10	General Fund					
5120	20	Special Revenue Funds					
5120	30	Capital Projects Funds					
5120	40	Debt Service Fund					

Total Debt Payments - Governmental Funds			\$6,735,000.00		\$3,062,515.77	\$9,797,515.77	
---	--	--	-----------------------	--	-----------------------	-----------------------	--

Function	Fund		Principal (910)	Principal (920)	Interest (830)	Total (Principal +Interest)
5110	50	Enterprise Fund				
5110	60	Internal Service Fund				
5120	50	Enterprise Fund				
5120	60	Internal Service Fund				

Total Debt Payments - Proprietary Funds						
--	--	--	--	--	--	--

Bond Details
Governmental Funds

Debt Category	Debt Issue Date (MM/YYYY)	Principal Amounts Only				Current Portion Due Within One Year (Principal and Interest)	Interest Paid During Fiscal Year
		Debt at Beginning of Fiscal Year	Additions	Reductions / Repayments	Debt at End of Fiscal Year		
Compensated Absences		792,325.75	397,986.25	196,923.75	993,388.25		
General Obligation Bonds/Notes – CIB	02/2007	7,190,000.00		1,320,000.00	5,870,000.00	1,864,550.00	302,525.00
General Obligation Bonds/Notes – CIB	06/2010	905,000.00		5,000.00	900,000.00	73,370.00	34,315.00
General Obligation Bonds/Notes – CIB	07/2010	1,270,000.00		5,000.00	1,265,000.00	101,110.00	48,185.00
General Obligation Bonds/Notes – CIB	12/2011	9,695,000.00		150,000.00	9,545,000.00	714,215.00	280,107.50
General Obligation Bonds/Notes – CIB	05/2012	1,170,000.00		155,000.00	1,015,000.00	202,740.00	24,470.00
General Obligation Bonds/Notes – CIB	05/2012	1,145,000.00		150,000.00	995,000.00	201,880.00	23,940.00
General Obligation Bonds/Notes – CIB	04/2012	1,040,000.00		230,000.00	810,000.00	262,400.00	20,800.00
General Obligation Bonds/Notes – CIB	10/2012	5,145,000.00		5,000.00	5,140,000.00	219,850.00	107,525.00
General Obligation Bonds/Notes – CIB	05/2013	7,415,000.00		3,080,000.00	4,335,000.00	3,534,800.00	117,500.00
General Obligation Bonds/Notes – CIB	12/2014	10,000,000.00		5,000.00	9,995,000.00	512,935.00	254,090.00
General Obligation Bonds/Notes – CIB	05/2015	27,195,000.00		1,630,000.00	25,565,000.00	2,903,675.00	825,976.04
General Obligation Bonds/Notes – CIB	05/2015	1,960,000.00			1,960,000.00	196,000.00	76,766.67
General Obligation Bonds/Notes – CIB	05/2015	26,935,000.00			26,935,000.00	2,416,125.00	946,315.63
Other Post-Employment Benefits (OPEB)		14,919,389.00	1,622,019.00		16,541,408.00		
Net Pension Liability		139,252,120.00	17,342,080.00		156,594,200.00		
Totals for Debt Entered:		\$256,028,834.75	\$19,362,085.25	\$6,931,923.75	\$268,458,996.25	\$13,203,650.00	\$3,062,515.84

Bond Details
Proprietary Funds

Debt Category	Debt Issue Date (MM/YYYY)	Principal Amounts Only				Current Portion Due Within One Year (Principal and Interest)	Interest Paid During Fiscal Year
		Debt at Beginning of Fiscal Year	Additions	Reductions / Repayments	Debt at End of Fiscal Year		
Net Pension Liability		2,841,880.00	353,920.00		3,195,800.00		
Totals for Debt Entered:		\$2,841,880.00	\$353,920.00		\$3,195,800.00		

General Fund (10)

Section 1: Tuition/Purchased Services as Reported within Expenditure Detail

	Amount
Tuition Reported in General Fund Expenditures 1000-560	3,714,492.04
Purchased Services in General Fund Expenditures 1000-594 and 1000-597	

Section 1 Total	\$3,714,492.04
------------------------	-----------------------

Section 2: Tuition Paid to Institution Types During Fiscal Year

	Tuition Paid For Nonspecial Education	Tuition Paid For Special Education	Total
1 1306 Institutions	98,680.76		98,680.76
2 Institutionalized Children's Programs			
3 Juveniles Incarcerated in Adult Facilities			
4 Residential Treatment Facilities	25,615.82	400,703.54	426,319.36
5 Other Local Education Agencies			
6 Brick and Mortar Charter Schools	331,610.59	122,363.66	453,974.25
7 Cyber Charter Schools	602,574.98	333,044.50	935,619.48
8 Career and Technology Centers	580,104.95		580,104.95
9 Approved Private Schools		1,218,292.52	1,218,292.52
10 PA Chartered Schools for the Deaf and Blind			
11 Private Residential Rehabilitative Institutions	1,500.72		1,500.72
12 Juvenile Detention Centers			
13 Special Program Jointures			
14 Other Tuition Not Included Elsewhere In This Section			
Section 2 Total	\$1,640,087.82	\$2,074,404.22	\$3,714,492.04

LEA : 104107903 Seneca Valley SD

Printed 4/28/2017 11:48:57 AM

Food Service / Cafeteria Operations Fund (51)

3000 Operation of Non-Instructional Services

Total

100 Personnel Services – Salaries

100 Personnel Services – Salaries 953,335.00

Total Personnel Services – Salaries \$953,335.00

200 Personnel Services – Employee Benefits

210 Group Insurance – Contracted Provider 65,510.82

220 Social Security Contributions 71,786.20

230 PSERS Retirement Contributions 321,608.67

250 Unemployment Compensation 857.39

260 Workers' Compensation 3,394.35

290 Other Current Employee Benefits 97.50

Total Personnel Services – Employee Benefits \$463,254.93

300 Purchased Professional and Technical Services

324 Professional Educational Services – Employee Training and Development Services 1,000.00

390 Other Purchased Professional and Technical Services 182.65

Total Purchased Professional and Technical Services \$1,182.65

400 Purchased Property Services

420 Utility Services 91,030.41

430 Repairs and Maintenance Services 29,138.21

Total Purchased Property Services \$120,168.62

500 Other Purchased Services

540 Advertising 3,330.71

580 Travel 1,560.37

591 Services Purchased Locally 7,525.80

Total Other Purchased Services \$12,416.88

600 Supplies

610 General Supplies 74,383.80

630 Food 1,096,421.04

Total Supplies \$1,170,804.84

700 Property

740 Depreciation 42,334.73

750 Equipment – Original and Additional 48,090.94

Total Property \$90,425.67

800 Other Objects

810 Dues and Fees 994.25

Total Other Objects \$994.25

Total 3000 Operation of Non-Instructional Services

\$2,812,582.84

Food Service / Cafeteria Operations Fund (51)

3100 Food Services

Elementary Secondary Federal Total

100	<u>Personnel Services – Salaries</u>			
	100 Personnel Services – Salaries			953,335.00
Total Personnel Services – Salaries				\$953,335.00
200	<u>Personnel Services – Employee Benefits</u>			
	210 Group Insurance – Contracted Provider			65,510.82
	220 Social Security Contributions			71,786.20
	230 PSERS Retirement Contributions			321,608.67
	250 Unemployment Compensation			857.39
	260 Workers' Compensation			3,394.35
	290 Other Current Employee Benefits			97.50
Total Personnel Services – Employee Benefits				\$463,254.93
300	<u>Purchased Professional and Technical Services</u>			
	324 Professional Educational Services – Employee Training and Development Services			1,000.00
	390 Other Purchased Professional and Technical Services			182.65
Total Purchased Professional and Technical Services				\$1,182.65
400	<u>Purchased Property Services</u>			
	420 Utility Services			91,030.41
	430 Repairs and Maintenance Services			29,138.21
Total Purchased Property Services				\$120,168.62
500	<u>Other Purchased Services</u>			
	540 Advertising			3,330.71
	580 Travel			1,560.37
	591 Services Purchased Locally			7,525.80
Total Other Purchased Services				\$12,416.88
600	<u>Supplies</u>			
	610 General Supplies			74,383.80
	630 Food		601,749.18	1,096,421.04
Total Supplies				\$601,749.18
700	<u>Property</u>			
	740 Depreciation			42,334.73
	750 Equipment – Original and Additional			48,090.94
Total Property				\$90,425.67
800	<u>Other Objects</u>			
	810 Dues and Fees			994.25
Total Other Objects				\$994.25
Total 3100 Food Services			\$601,749.18	\$2,812,582.84

	<u>Food Service(51)</u>	<u>Child Care Operations(52)</u>	<u>Other Enterprise(58)</u>	<u>Internal Service(60)</u>	<u>Total</u>
3000 <u>Operation of Non-Instructional Services</u>					
3100 Food Services	2,812,582.84				2,812,582.84
Total Operation of Non-Instructional Services	\$2,812,582.84				\$2,812,582.84
TOTAL ACTUAL EXPENDITURES & OTHER FINANCING USES	\$2,812,582.84				\$2,812,582.84