

LEA Name : Seneca Valley SD
Address : 124 Seneca School Rd
Harmony , PA 16037

County : Butler
AUN Number : 104107903
LEA Type : SD

Annual Financial Report Accuracy Certification Statement

For Fiscal Year Ending
6/30/2020

Pennsylvania Department of Education
&
Office of Comptroller Operations

PDE-2056: Intermediate Unit
PDE-2057: School District, AVTS/CTC, Charter School,
and Special Program Jointure


CERTIFICATION: By signing this page I agree that the electronic data submitted is a complete and accurate statement of the financial operations and status of the local education agency for the fiscal year. It has been prepared in accordance with generally accepted accounting principles and established Commonwealth of PA reporting guidelines.



Chief School Administrator Signature

11-2-20

Date



Board Secretary Signature

11-2-20

Date

Celeste R Foley

Contact Person

(724)452-6040 Ext :1622

Contact Person Telephone Number

foleycr@svsd.net

Contact Person E-mail Address

(724)452-6205

Contact Person Fax Number

Audit Certification
Annual Financial Report:
For Fiscal Year Ending **6/30/2020**
(Pursuant to PA School Code Section 218(b))

LEA Name : Seneca Valley SD
AUN Number : 104107903
County : Butler

Audit Certification Due: 12/31/2020

This certification is applicable to the Annual Financial Report data submitted through the Consolidated Financial Reporting System (CFRS).

CERTIFICATION: By signing this page I agree that the financial statements of the school have been properly audited as noted above pursuant to Article XXIV, and in the auditor's professional opinion, the Annual Financial Report (PDE-2057) submitted through CFRS is materially consistent with the audited financial statements.

Chief School Administrator

Board Secretary

Signature

Date

Signature

Date

Celeste R Foley

Contact Person

foleycr@svsd.net

Contact Person E-mail Address

(724)452-6040 Ext :1622

Contact Person Telephone Number

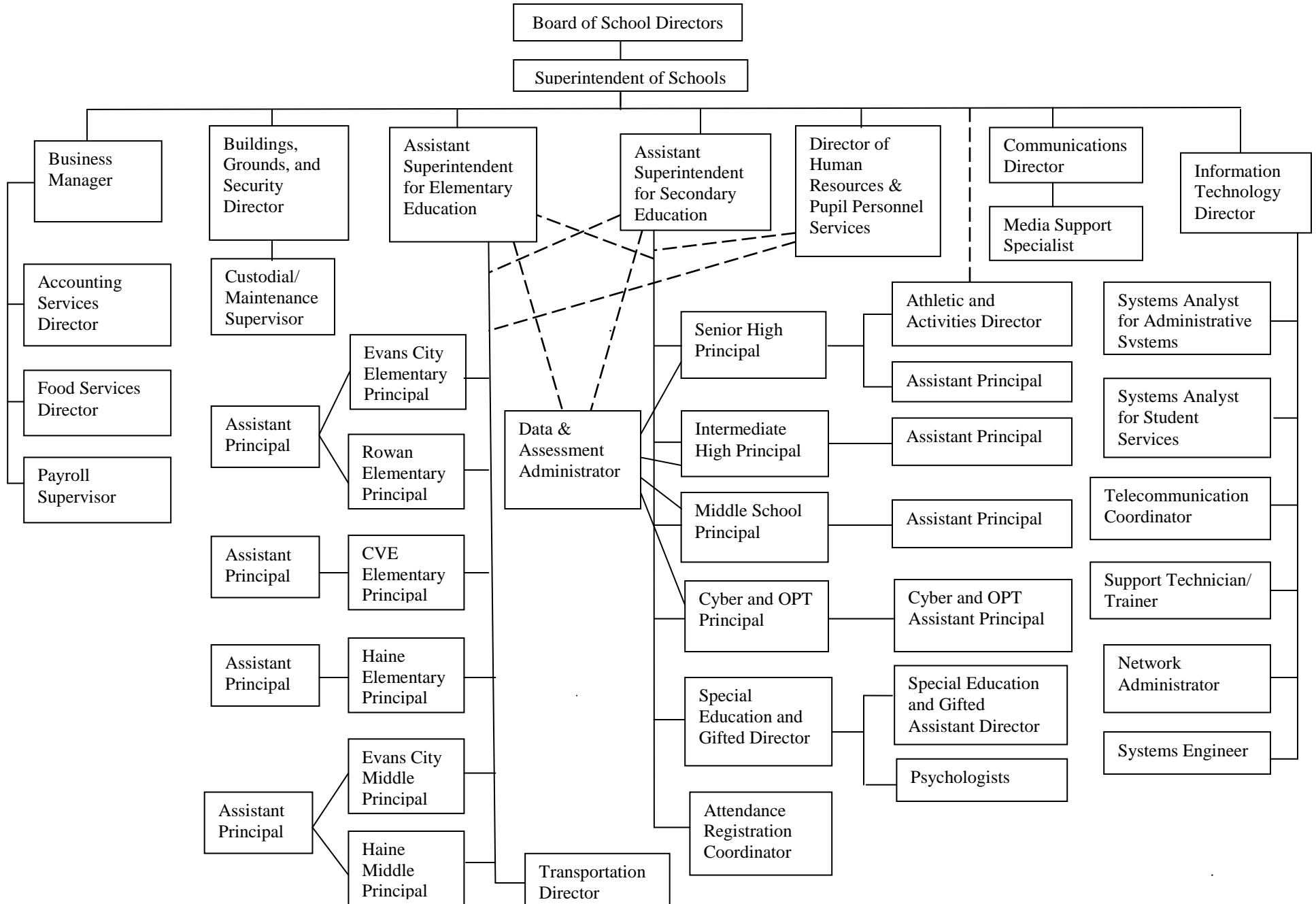
(724)452-6205

Contact Person Fax Number

SENECA VALLEY SCHOOL DISTRICT

No. 008

SECTION: LOCAL BOARD PROCEDURES
 TITLE: ORGANIZATION CHART
 ADOPTED:
 REVISED: October 20, 2014



Seneca Valley School District



Tracy L. Vitale, Ed.D.
Superintendent of Schools

Administration Center
124 Seneca School Road
Harmony, PA 16037-9134
PHONE: (724) 452-6040
FAX: (724) 452-6105

The Seneca Valley School District current capitalization practice is to capitalize as an asset any purchases as equipment or qualified capital improvement exceeding \$5,000.00.

Capitalized purchase are added to the District's fixed asset inventory and subsequently depreciated.

<u>Val Number</u>	<u>Description</u>	<u>Justification</u>
10001	A PY AFR Revision has been started but has not been fully submitted. The CY AFR will not be approved until the PY revision is complete including all required signature documents. Please acknowledge your understanding of this by either entering the date the PY revision will be completed or stating that this revision was started in error and can be deleted by CFRS staff.	The revision appearing in 2018-2019 was started in error and can be deleted by the CFRS staff. Thank you
42420	Expenditure Detail: Total current year 2700-513 expenditure varies from prior year by 10%. Correct the data or enter a justification. 2700-513, AFR Exp Detail: \$6,075,445.24 2700-513, PY AFR Amount: \$8,245,706.78	Due to classes being held virtually because of Covid 19, our transportation costs were cut significantly in 2019-2020 as compared to 2020-2021.
50420	SESS - 2150 Speech Pathology and Audiology Services: SESS Schedule amounts for Special Education vary from prior year by 40% or more. Correct the data or enter a justification. SESS Schedule 2150: \$945.53 Prior Year SESS Schedule 2150: \$3,761.08	Due to classes being held virtually because of Covid 19, our District did not provide as many Speech Pathology and Audiology Services in 2019-2020 as compared to 2018-2019.

Amounts Expressed in Whole Dollars

	<u>General Fund</u> <u>(10)</u>	<u>Student Sponsored</u> <u>Activity Fund</u> <u>(21)</u>	<u>Public Purpose Trust</u> <u>(27)</u>	<u>Other Compt Approved</u> <u>(28)</u>	<u>Athletic / Activity</u> <u>(29)</u>
Assets And Deferred Outflows Of Resources					
Assets					
0100 Cash and Cash Equivalents	32,681,298				
0110 Investments	15,833,131				
0120 Taxes Receivable	16,860				
0130 Due From Other Funds	453,680				
0141 Due From Other Governments	945,566				
0142 State Revenue Receivable	4,490,855				
0143 Federal Revenue Receivable	46,028				
0145 Other Intergovernmental Revenue Receivable	170,536				
0146 Due from Primary Government					
0147 Due from Component Unit					
0150 Other Receivables	140,489				
0170 Inventories					
0180 Prepaid Expenses (Expenditures)					
0190 Other Current Assets					
Total Assets	\$54,778,443				
0910 Deferred Outflows of Resources					
Total Assets And Deferred Outflows Of Resources	\$54,778,443				

Amounts Expressed in Whole Dollars

<u>Capital Reserve (690.</u>	<u>Capital Reserve (1431)</u>	<u>Other Capital Projects</u>	<u>Debt Service</u>	<u>Permanent</u>
<u>1850)</u>	<u>(32)</u>	<u>Fund</u>	<u>(40)</u>	<u>(90)</u>
<u>(31)</u>		<u>(39)</u>		

Assets And Deferred Outflows Of Resources

Assets

0100 Cash and Cash Equivalents	20,815,775
0110 Investments	35,676,211
0120 Taxes Receivable	
0130 Due From Other Funds	
0141 Due From Other Governments	
0142 State Revenue Receivable	
0143 Federal Revenue Receivable	
0145 Other Intergovernmental Revenue Receivable	
0146 Due from Primary Government	
0147 Due from Component Unit	
0150 Other Receivables	
0170 Inventories	
0180 Prepaid Expenses (Expenditures)	
0190 Other Current Assets	

Total Assets	\$56,491,986
---------------------	---------------------

0910 Deferred Outflows of Resources

Total Assets And Deferred Outflows Of Resources	\$56,491,986
--	---------------------

Amounts Expressed in Whole Dollars

Total Governmental Funds

Assets And Deferred Outflows Of Resources

Assets	
0100 Cash and Cash Equivalents	53,497,073
0110 Investments	51,509,342
0120 Taxes Receivable	16,860
0130 Due From Other Funds	453,680
0141 Due From Other Governments	945,566
0142 State Revenue Receivable	4,490,855
0143 Federal Revenue Receivable	46,028
0145 Other Intergovernmental Revenue Receivable	170,536
0146 Due from Primary Government	
0147 Due from Component Unit	
0150 Other Receivables	140,489
0170 Inventories	
0180 Prepaid Expenses (Expenditures)	
0190 Other Current Assets	
Total Assets	\$111,270,429
0910 Deferred Outflows of Resources	
Total Assets And Deferred Outflows Of Resources	\$111,270,429

Amounts Expressed in Whole Dollars

<u>General Fund</u> <u>(10)</u>	<u>Student Sponsored</u> <u>Activity Fund</u> <u>(21)</u>	<u>Public Purpose Trust</u> <u>(27)</u>	<u>Other Compt Approved</u> <u>(28)</u>	<u>Athletic / Activity</u> <u>(29)</u>
------------------------------------	---	--	--	---

Liabilities And Deferred Inflows Of Resources And Fund Balances

Liabilities

0400 Due to Other Funds	220,246
0411 Due to Other Governments	
0412 Due to Primary Government	
0413 Due to Component Unit	
0420 Accounts Payable	2,120,891
0430 Contracts Payable	
0440 Current Portion of Long-Term Debt	
0450 Short-Term Payables	
0461 Accrued Salaries and Benefits	8,218,772
0462 Payroll Deductions and Withholding	6,061,050
0480 Unearned Revenues	46,092
0490 Other Current Liabilities	11,834

Total Liabilities **\$16,678,885**

0950 Deferred Inflows of Resources

Fund Balances

0810 Nonspendable Fund Balance	
0820 Restricted Fund Balance	180,296
0830 Committed Fund Balance	1,000,000
0840 Assigned Fund Balance	27,919,262
0850 Unassigned Fund Balance	9,000,000

Total Fund Balances **\$38,099,558**

Total Liabilities, Deferred Inflows Of Resources And Fund Balances **\$54,778,443**

Amounts Expressed in Whole Dollars

<u>Capital Reserve (690.</u>	<u>Capital Reserve (1431)</u>	<u>Other Capital Projects</u>	<u>Debt Service</u>	<u>Permanent</u>
<u>1850)</u>	<u>(32)</u>	<u>Fund</u>	<u>(40)</u>	<u>(90)</u>
<u>(31)</u>		<u>(39)</u>		

Liabilities And Deferred Inflows Of Resources And Fund Balances

Liabilities

0400 Due to Other Funds	
0411 Due to Other Governments	
0412 Due to Primary Government	
0413 Due to Component Unit	
0420 Accounts Payable	2,510,373
0430 Contracts Payable	
0440 Current Portion of Long-Term Debt	
0450 Short-Term Payables	
0461 Accrued Salaries and Benefits	
0462 Payroll Deductions and Withholding	
0480 Unearned Revenues	
0490 Other Current Liabilities	

Total Liabilities	\$2,510,373
--------------------------	--------------------

0950 Deferred Inflows of Resources

Fund Balances

0810 Nonspendable Fund Balance	
0820 Restricted Fund Balance	20,815,775
0830 Committed Fund Balance	
0840 Assigned Fund Balance	33,165,838
0850 Unassigned Fund Balance	

Total Fund Balances	\$53,981,613
----------------------------	---------------------

Total Liabilities, Deferred Inflows Of Resources And Fund Balances	\$56,491,986
---	---------------------

Amounts Expressed in Whole Dollars

Total Governmental Funds

Liabilities And Deferred Inflows Of Resources And Fund Balances

Liabilities

0400 Due to Other Funds	220,246
0411 Due to Other Governments	
0412 Due to Primary Government	
0413 Due to Component Unit	
0420 Accounts Payable	4,631,264
0430 Contracts Payable	
0440 Current Portion of Long-Term Debt	
0450 Short-Term Payables	
0461 Accrued Salaries and Benefits	8,218,772
0462 Payroll Deductions and Withholding	6,061,050
0480 Unearned Revenues	46,092
0490 Other Current Liabilities	11,834

Total Liabilities \$19,189,258

0950 Deferred Inflows of Resources

Fund Balances

0810 Nonspendable Fund Balance	
0820 Restricted Fund Balance	20,996,071
0830 Committed Fund Balance	1,000,000
0840 Assigned Fund Balance	61,085,100
0850 Unassigned Fund Balance	9,000,000

Total Fund Balances \$92,081,171

Total Liabilities, Deferred Inflows Of Resources And Fund Balances \$111,270,429

Amounts Expressed in Whole Dollars	<u>General Fund</u> <u>(10)</u>	<u>Student Sponsored</u> <u>Activity Fund</u> <u>(21)</u>	<u>Public Purpose Trust</u> <u>(27)</u>	<u>Other Compt Approved</u> <u>(28)</u>	<u>Athletic / Activity</u> <u>(29)</u>
Revenues					
6000 Revenue from Local Sources	99,663,152				
7000 Revenue from State Sources	36,306,497				
8000 Revenue from Federal Sources	805,540				
Total Revenues	\$136,775,189				
Expenditures					
1000 Instruction	82,691,946				
2000 Support Services	33,139,449				
3000 Operation of Non-Instructional Services	2,119,078				
4000 Facilities Acquisition, Construction and Improvement Services	23,132				
5110 Debt Service	9,638,517				
5130 Refund of Prior Year Revenues / Receipts					
Total Expenditures	\$127,612,122				
Excess (Deficiency) Of Revenues Over Expenditures	\$9,163,067				
Other Financing Sources (Uses)					
9110 Face Value of Bonds Issued					
9120 Proceeds from Refunding of Bonds					
9130 Bond Premiums					
9200 Proceeds from Extended-Term Financing					
9300 Interfund Transfers - IN					
9400 Sale of or Compensation for Loss of Fixed Assets	1,000				
9710 Transfers from Component Units					
9720 Transfers from Primary Governments					
9910 Other Financing Sources Not Listed in the 9000 Series					
9990 Insurance Recoveries					
5120 Debt Service – Refunded Bonds					
5150 Bond Discounts					
5200 Interfund Transfers – Out	4,352,534				
5300 Transfers Out to Component Units/Primary Governments					
Total Other Financing Sources (Uses)	(\$4,351,534)				

Amounts Expressed in Whole Dollars	<u>Capital Reserve (690.1850)</u> <u>(31)</u>	<u>Capital Reserve (1431)</u> <u>(32)</u>	<u>Other Capital Projects</u> <u>Fund</u> <u>(39)</u>	<u>Debt Service</u> <u>(40)</u>	<u>Permanent</u> <u>(90)</u>
Revenues					
6000 Revenue from Local Sources			807,531		
7000 Revenue from State Sources					
8000 Revenue from Federal Sources					
Total Revenues			\$807,531		
Expenditures					
1000 Instruction					
2000 Support Services				90,599	
3000 Operation of Non-Instructional Services					
4000 Facilities Acquisition, Construction and Improvement Services			10,767,925		
5110 Debt Service					
5130 Refund of Prior Year Revenues / Receipts					
Total Expenditures			\$10,767,925	\$90,599	
Excess (Deficiency) Of Revenues Over Expenditures			(\$9,960,394)	(\$90,599)	
Other Financing Sources (Uses)					
9110 Face Value of Bonds Issued					
9120 Proceeds from Refunding of Bonds				14,355,000	
9130 Bond Premiums				1,820,051	
9200 Proceeds from Extended-Term Financing					
9300 Interfund Transfers - IN			4,000,000	352,534	
9400 Sale of or Compensation for Loss of Fixed Assets					
9710 Transfers from Component Units					
9720 Transfers from Primary Governments					
9910 Other Financing Sources Not Listed in the 9000 Series					
9990 Insurance Recoveries					
5120 Debt Service – Refunded Bonds				16,436,986	
5150 Bond Discounts					
5200 Interfund Transfers – Out					
5300 Transfers Out to Component Units/Primary Governments					
Total Other Financing Sources (Uses)			\$4,000,000	\$90,599	

Amounts Expressed in Whole Dollars	<u>Total Governmental Funds</u>
Revenues	
6000 Revenue from Local Sources	100,470,683
7000 Revenue from State Sources	36,306,497
8000 Revenue from Federal Sources	805,540
Total Revenues	\$137,582,720
Expenditures	
1000 Instruction	82,691,946
2000 Support Services	33,230,048
3000 Operation of Non-Instructional Services	2,119,078
4000 Facilities Acquisition, Construction and Improvement Services	10,791,057
5110 Debt Service	9,638,517
5130 Refund of Prior Year Revenues / Receipts	
Total Expenditures	\$138,470,646
Excess (Deficiency) Of Revenues Over Expenditures	(\$887,926)
Other Financing Sources (Uses)	
9110 Face Value of Bonds Issued	
9120 Proceeds from Refunding of Bonds	14,355,000
9130 Bond Premiums	1,820,051
9200 Proceeds from Extended-Term Financing	
9300 Interfund Transfers - IN	4,352,534
9400 Sale of or Compensation for Loss of Fixed Assets	1,000
9710 Transfers from Component Units	
9720 Transfers from Primary Governments	
9910 Other Financing Sources Not Listed in the 9000 Series	
9990 Insurance Recoveries	
5120 Debt Service – Refunded Bonds	16,436,986
5150 Bond Discounts	
5200 Interfund Transfers – Out	4,352,534
5300 Transfers Out to Component Units/Primary Governments	
Total Other Financing Sources (Uses)	(\$260,935)

Amounts Expressed in Whole Dollars	<u>General Fund</u> <u>(10)</u>	<u>Student Sponsored</u> <u>Activity Fund</u> <u>(21)</u>	<u>Public Purpose Trust</u> <u>(27)</u>	<u>Other Compt Approved</u> <u>(28)</u>	<u>Athletic / Activity</u> <u>(29)</u>
Special And Extraordinary Items					
9920 Special Items – Gains					
9930 Extraordinary Items – Gains					
5520 Special Items – Losses					
5530 Extraordinary Items – Losses					
Net Change In Fund Balances	\$4,811,533				
Fund Balance					
0001 Fund Balance - Beginning of Fiscal Year	33,288,025				
Fund Balance - End Of Year	\$38,099,558				

Amounts Expressed in Whole Dollars	<u>Capital Reserve (690.</u> <u>1850)</u> <u>(31)</u>	<u>Capital Reserve (1431)</u> <u>(32)</u>	<u>Other Capital Projects</u> <u>Fund</u> <u>(39)</u>	<u>Debt Service</u> <u>(40)</u>	<u>Permanent</u> <u>(90)</u>
Special And Extraordinary Items					
9920 Special Items – Gains					
9930 Extraordinary Items – Gains					
5520 Special Items – Losses					
5530 Extraordinary Items – Losses					
Net Change In Fund Balances			(\$5,960,394)		
Fund Balance					
0001 Fund Balance - Beginning of Fiscal Year			59,942,007		
Fund Balance - End Of Year			\$53,981,613		

Amounts Expressed in Whole Dollars	<u>Total Governmental Funds</u>
Special And Extraordinary Items	
9920 Special Items – Gains	
9930 Extraordinary Items – Gains	
5520 Special Items – Losses	
5530 Extraordinary Items – Losses	
Net Change In Fund Balances	(\$1,148,861)
Fund Balance	
0001 Fund Balance - Beginning of Fiscal Year	93,230,032
Fund Balance - End Of Year	\$92,081,171

Amounts Expressed in Whole Dollars	<u>Food Service</u> <u>(51)</u>	<u>Child Care</u> <u>Operations</u> <u>(52)</u>	<u>Other Enterprise</u> <u>(58)</u>	<u>TOTAL</u>	<u>Internal Service</u> <u>(60)</u>
Assets And Deferred Outflows Of Resources					
Current Assets					
0100 Cash and Cash Equivalents	1,786,568			1,786,568	
0110 Investments					
0130 Due From Other Funds	220,246			220,246	
0141 Due From Other Governments	366,766			366,766	
0142 State Revenue Receivable					
0143 Federal Revenue Receivable					
0146 Due from Primary Government					
0147 Due from Component Unit					
0150 Other Receivables					
0170 Inventories	54,072			54,072	
0180 Prepaid Expenses (Expenditures)					
0190 Other Current Assets					
Total Current Assets	\$2,427,652			\$2,427,652	
Noncurrent Assets					
0211 Land					
0212 Site Improvements (Net)					
0220 Buildings and Building Improvements (Net)					
0230 Machinery, Equipment and Furniture (Net)	172,183			172,183	
0250 Construction in Progress					
0260 Long Term Prepayments					
0290 Other Noncurrent Assets					
Total Noncurrent Assets	\$172,183			\$172,183	
0910 Deferred Outflows of Resources	626,419			626,419	
Total Assets And Deferred Outflows Of Resources	\$3,226,254			\$3,226,254	

LEA : 104107903 Seneca Valley SD

Printed 12/2/2020 2:22:28 PM

Page - 2 of 2

Amounts Expressed in Whole Dollars	<u>Food Service</u> (51)	<u>Child Care</u> <u>Operations</u> (52)	<u>Other Enterprise</u> (58)	<u>TOTAL</u>	<u>Internal Service</u> (60)
Liabilities And Deferred Inflows Of Resources And Net Position					
Current Liabilities					
0400 Due to Other Funds	453,680			453,680	
0411 Due to Other Governments					
0413 Due to Component Unit					
0420 Accounts Payable	159,913			159,913	
0430 Contracts Payable					
0440 Current Portion of Long-Term Debt					
0450 Short-Term Payables					
0461 Accrued Salaries and Benefits					
0462 Payroll Deductions and Withholding					
0480 Unearned Revenues	27,577			27,577	
0490 Other Current Liabilities					
Total Current Liabilities	\$641,170			\$641,170	
Noncurrent Liabilities					
0510 Bonds Payable					
0520 Extended-Term Financing Agreements Payable					
0530 Lease-Purchase Obligations					
0540 Accumulated Compensated Absences	2,356			2,356	
0550 Authority Lease Obligations					
0560 Other Post-Employment Benefits (OPEB)	173,260			173,260	
0570 Net Pension Liability	3,810,920			3,810,920	
0599 Other Noncurrent Liabilities					
Total Noncurrent Liabilities	\$3,986,536			\$3,986,536	
Total Liabilities	\$4,627,706			\$4,627,706	
0950 Deferred Inflows of Resources	142,360			142,360	
Net Position					
0791 Net Investment in Capital Assets	172,183			172,183	
0008 Restricted Net Position (0792 – 0798)					
0799 Unrestricted Net Position	(1,715,995)			(1,715,995)	
Total Net Position	(\$1,543,812)			(\$1,543,812)	
Total Liabilities And Deferred Inflows Of Resources And Net Position	\$3,226,254			\$3,226,254	

Amounts Expressed in Whole Dollars	<u>Food Service</u> <u>(51)</u>	<u>Child Care Operations</u> <u>(52)</u>	<u>Other Enterprise</u> <u>(58)</u>	<u>TOTAL</u>	<u>Internal Service</u> <u>(60)</u>
Operating Revenues					
6600 Food Service Revenue	1,406,041			1,406,041	
0071 Charges for Services					
0072 Other Operating Revenue					
Total Operating Revenues	\$1,406,041			\$1,406,041	
Operating Expenses					
100 Personnel Services – Salaries	1,059,514			1,059,514	
200 Personnel Services – Employee Benefits	573,514			573,514	
300 Purchased Professional and Technical Services	1,572			1,572	
400 Purchased Property Services	27,272			27,272	
500 Other Purchased Services	864,575			864,575	
600 Supplies	303,907			303,907	
740 Depreciation	46,234			46,234	
810 Dues and Fees	1,347			1,347	
890 Miscellaneous Expenditures					
Total Operating Expenses	\$2,877,935			\$2,877,935	
Operating Income (Loss)	(\$1,471,894)			(\$1,471,894)	
Non Operating Revenues (Expenses)					
6500 Earnings on Investments	1,419			1,419	
6920 Contributions and Donations from Private Sources					
6930 Gains or Losses on Sale of Fixed Assets					
6991 Refunds of a Prior Year Expenditure	1,008			1,008	
7000 Revenue from State Sources	269,073			269,073	
8000 Revenue from Federal Sources	1,191,251			1,191,251	
9990 Insurance Recoveries					
820 Claims and Judgments Against the LEA					
830 Interest					
TOTAL Non Operating Revenues (Expenses)	\$1,462,751			\$1,462,751	
Income (Loss) Before Contributions And Transfers	(\$9,143)			(\$9,143)	

Amounts Expressed in Whole Dollars	<u>Food Service</u> <u>(51)</u>	<u>Child Care Operations</u> <u>(52)</u>	<u>Other Enterprise</u> <u>(58)</u>	<u>TOTAL</u>	<u>Internal Service</u> <u>(60)</u>
Contributions, Transfers, and Special and Extraordinary Items					
5200 Interfund Transfers – Out					
5300 Transfers Out to Component Units/Primary Governments					
5520 Special Items – Losses					
5530 Extraordinary Items – Losses					
9300 Interfund Transfers - IN					
9500 Capital Contributions					
9700 Transfers IN From Component Units/Primary Governments					
9920 Special Items – Gains					
9930 Extraordinary Items – Gains					
Change In Net Position	(\$9,143)			(\$9,143)	
0002 Net Position - Beginning of Fiscal Year	(1,548,375)			(1,548,375)	
0003 Accounting Changes / Residual Equity Transfers	13,706			13,706	
Net Position - End Of Year	(\$1,543,812)			(\$1,543,812)	

Amounts Expressed in Whole Dollars	<u>Food Service</u> <u>(51)</u>	<u>Child Care Operations</u> <u>(52)</u>	<u>Other Enterprise</u> <u>(58)</u>	<u>TOTAL</u>	<u>Internal Service(60)</u>
Cash Flows From Operating Activities					
0011 Cash Receipts From Users	1,475,957			1,475,957	
0012 Cash Receipts From Assessments Made to Other Funds					
0013 Cash Receipts From Earnings on Investments					
0014 Cash Receipts From Other Operating Revenue					
0015 Cash Payments To Employees For Services	1,306,072			1,306,072	
0016 Cash Payments For Insurance Claims					
0017 Cash Payments To Suppliers For Goods and Services	1,051,152			1,051,152	
0018 Cash Payments For Other Operating Expenses					
Net Cash Provided By (Used For) Operating Activities	(\$881,267)			(\$881,267)	
Cash Flows From Non-Capital Financing Activities					
0021 Receipts From Local Sources - 6000	262,464			262,464	
0022 Receipts From State Sources - 7000	733,375			733,375	
0023 Receipts From Federal Sources -8000					
0024 Notes and Loans Received (Repaid)					
0025 Interest Paid on Notes/Loans - 5100-830					
0026 Operating Transfers In (Out)/Residual Equity Trans					
0027 Operating Transfers In (Out) Primary Government / Comp Unit					
0028 Receipts From Refund of Prior Year Expenditures - 6991	1,008			1,008	
0029 Special and Extraordinary Gains (losses)					
0030 Receipts from Insurance Recoveries -9990					
Net Cash Prov By (Used for) Non-Capital Financing Activities	\$996,847			\$996,847	
Cash Flows From Capital and Related Financing Activities					
0031 Payments For Fac Acq, Const, and Imp - 4000	(41,376)			(41,376)	
0032 Gain / (Loss) on Sale of Fixed Assets - 6930					
0033 Proceeds From Extended Term Financing - 9200					
0034 Principal Paid on Financing Agreements					
0035 Interest Paid on Financing Agreements - 5100-830					
0036 (Inc) Dec in Contributed Capital					
Net Cash Prov By (Used for) Capital and Related Financing Activities	(\$41,376)			(\$41,376)	
Cash Flows From Investing Activities					
0041 Earnings on Investments - 6500	1,419			1,419	
0042 Purchase of Inv Securities / Deposits to Inv Pools					
0043 Receipts From Investment Pool Withdrawals					
0044 Proceeds from Sale and Maturity of Inv Securities					

LEA : 104107903 Seneca Valley SD

Printed 12/2/2020 2:22:43 PM

0045 Loans Received (Paid)

Net Cash Prov By (Used for) Investing Activities	\$1,419	\$1,419
---	----------------	----------------

	<u>Food Service</u> <u>(51)</u>	<u>Child Care Operations</u> <u>(52)</u>	<u>Other Enterprise</u> <u>(58)</u>	<u>TOTAL</u>	<u>Internal Service</u> <u>(60)</u>
Net Increase (Decrease) in Cash Flows	75,623			75,623	
0004 Cash and Cash Equivalents Beginning of Year	1,710,945			1,710,945	
Cash and Cash Equivalents at Year End	\$1,786,568			\$1,786,568	

Reconciliation of Operating Income (Loss) To Net Cash Provided by (Used For) Operating Activities

0005 Operating Income (Loss) per REP	(1,471,894)			(1,471,894)	
Adjustments					
0051 Depreciation and Net Amortization	36,242			36,242	
0052 Provision for Uncollectible Accounts					
0053 Other Adjustments	310,938			310,938	
Effect of Changes in Assets, Liabilities, Deferred Outflows and Deferred Inflows					
0054 (Inc) Dec In Accounts Receivable (0120-0150)					
0055 Advances to Other Funds (0160)	205,439			205,439	
0056 (Inc) Dec in Inventories (0170)	9,504			9,504	
0057 (Inc) Dec in Prepaid Expenses (0180)	69,916			69,916	
0058 (Inc) Dec in Other Current or Noncurrent Assets					
0064 Deferred Outflows (0910)					
0059 Inc (Dec) in Accounts Payable (0400-0450)	(18,147)			(18,147)	
0060 Inc (Dec) in Accrued Salaries/Benefits (0461)					
0065 Inc (Dec) in Net Pension Liabilities (0570)					
0066 Inc (Dec) in Other Postemp Benefit Oblig (0560)					
0061 Inc (Dec) in Payroll Deductions/Withholding (0462)					
0062 Inc (Dec) in Unearned Revenue (0480)	(23,340)			(23,340)	
0063 Inc (Dec) in Other Current or Noncurrent Liabilities	75			75	
0067 Deferred Inflows (0950)					
Total Adjustments	\$590,627			\$590,627	
Cash Provided By (Used for) Total	(\$881,267)			(\$881,267)	

COMBINED STATEMENT OF CASH FLOWS
SCHEDULE OF NONCASH INVESTING, CAPITAL, AND FINANCING ACTIVITIES

Explanation of Transaction and Balance Sheet Effect	Amount
Total	

LEA : 104107903 Seneca Valley SD

Printed 12/2/2020 2:22:47 PM

Amounts Expressed in Whole Dollars

Private Purpose Trust
(71)

Investment Trust
(72)

Pension Trust
(73)

Student Activity Custodial
(81)

Assets And Deferred Outflows Of Resources

Assets

0100 Cash and Cash Equivalents	86,117			374,584
0110 Investments				
0130 Due From Other Funds				
0140 Due from Other Governments, Primary Government and Component Units				
0150 Other Receivables				
0170 Inventories				
0180 Prepaid Expenses (Expenditures)				
0190 Other Current Assets				
0220 Buildings and Building Improvements (Net)				
0230 Machinery, Equipment and Furniture (Net)				
Total Assets	\$86,117			\$374,584
0910 Deferred Outflows of Resources				
Total Assets And Deferred Outflows Of Resources	\$86,117			\$374,584

LEA : 104107903 Seneca Valley SD

Printed 12/2/2020 2:22:47 PM

Amounts Expressed in Whole Dollars

Other Custodial
(89)

Fiduciary Component Units
(98)

Total Fiduciary Funds

Assets And Deferred Outflows Of Resources

Assets

0100 Cash and Cash Equivalents			460,701
0110 Investments			
0130 Due From Other Funds			
0140 Due from Other Governments, Primary Government and Component Units			
0150 Other Receivables			
0170 Inventories			
0180 Prepaid Expenses (Expenditures)			
0190 Other Current Assets			
0220 Buildings and Building Improvements (Net)			
0230 Machinery, Equipment and Furniture (Net)			

Total Assets **\$460,701**

0910 Deferred Outflows of Resources

Total Assets And Deferred Outflows Of Resources **\$460,701**

LEA : 104107903 Seneca Valley SD

Printed 12/2/2020 2:22:47 PM

Amounts Expressed in Whole Dollars

Private Purpose Trust
(71)

Investment Trust
(72)

Pension Trust
(73)

Student Activity Custodial
(81)

Liabilities, Deferred Inflows Of Resources And Net Position

Liabilities

0400 Due to Other Funds				
0410 Due to Other Governments, Primary Government and Component Units				
0420 Accounts Payable				
0430 Contracts Payable				
0450 Short-Term Payables				
0460 Payroll Accruals and Withholdings				
0480 Unearned Revenues				
0490 Other Current Liabilities				374,584

Total Liabilities **\$374,584**

0950 Deferred Inflows of Resources

Net Position

0791 Net Investment in Capital Assets				
0009 Restricted Net Position (0792 – 0798)		86,117		
0799 Unrestricted Net Position				

Total Net Position **\$86,117**

Total Liabilities, Deferred Inflows Of Resources And Net Position **\$374,584**

LEA : 104107903 Seneca Valley SD

Printed 12/2/2020 2:22:47 PM

Amounts Expressed in Whole Dollars	<u>Other Custodial</u> <u>(89)</u>	<u>Fiduciary Component Units</u> <u>(98)</u>	<u>Total Fiduciary Funds</u>
Liabilities, Deferred Inflows Of Resources And Net Position			
Liabilities			
0400 Due to Other Funds			
0410 Due to Other Governments, Primary Government and Component Units			
0420 Accounts Payable			
0430 Contracts Payable			
0450 Short-Term Payables			
0460 Payroll Accruals and Withholdings			
0480 Unearned Revenues			
0490 Other Current Liabilities			374,584
Total Liabilities			\$374,584
0950 Deferred Inflows of Resources			
Net Position			
0791 Net Investment in Capital Assets			
0009 Restricted Net Position (0792 – 0798)			86,117
0799 Unrestricted Net Position			
Total Net Position			\$86,117
Total Liabilities, Deferred Inflows Of Resources And Net Position			\$460,701

Amounts Expressed in Whole Dollars	<u>Private Purpose Trust</u> (71)	<u>Investment Trust</u> (72)	<u>Pension Trust</u> (73)	<u>Student Activity</u> <u>Custodial</u> (81)	<u>Other Custodial</u> (89)	<u>Fiduciary Component</u> <u>Units</u> (98)
Additions						
0091 Gifts and Contributions						
0095 Net Investment Earnings						
0092 Other Additions						
Deductions						
0093 Scholarships Awarded	100					
0094 Other Deductions	1,637					
Change In Net Position	(\$1,737)					
0006 Net Position – Beginning of Fiscal Year	87,854					
0007 Net Position Held in Trust for Pension Benefits						
Net Position - End of Fiscal Year	\$86,117					

Amounts Expressed in Whole Dollars	<u>Total Fiduciary Funds</u>
Additions	
0091 Gifts and Contributions	
0095 Net Investment Earnings	
0092 Other Additions	
Deductions	
0093 Scholarships Awarded	100
0094 Other Deductions	1,637
Change in Net Position	(\$1,737)
0006 Net Position – Beginning of Fiscal Year	87,854
0007 Net Position Held in Trust for Pension Benefits	
Net Position - End of Fiscal Year	\$86,117

	<u>Revenue Reported In Current Year</u>	<u>Current Year Tax Accrual</u>	<u>Prior Year Tax Accrual</u>	<u>Taxes Collected In Current Year</u>
<u>Revenue from Local Sources</u>				
6111 Current Real Estate Taxes	76,779,903.37			76,779,903.37
6112 Interim Real Estate Taxes	741,170.70			741,170.70
6113 Public Utility Realty Taxes	79,569.85			79,569.85
6114 Payments in Lieu of Current Taxes - State / Local	313,314.19			313,314.19
6149 Current Act 511 Taxes, Other Flat Rate Assessments	190,119.48			190,119.48
6151 Current Act 511 Earned Income Taxes	11,097,781.77			11,097,781.77
6153 Current Act 511 Real Estate Transfer Taxes	3,420,207.03			3,420,207.03
6411 Delinquent Real Estate Taxes	905,873.75			905,873.75
6431 Delinquent Act 1 Earned Income Taxes	133,521.10			133,521.10
6440 Delinquent Local Enabling Taxes - Flat Rate Assessments	68,144.06			68,144.06
6500 Earnings on Investments	965,542.51			
6700 Revenues from LEA Activities	375,610.73			
6831 Federal Revenue Received from Other Pennsylvania Public LEAs	4,000.00			
6832 Federal IDEA Revenue Received as Pass Through	1,468,754.79			
6839 Federal Revenue Received from Other Sources	200.00			
6910 Rentals	79,033.50			
6920 Contributions and Donations from Private Sources	44,768.62			
6941 Regular Day School Tuition	61,753.28			
6942 Summer School Tuition	85,150.00			
6944 Receipts from Other LEAs in Pennsylvania - Education	2,314,365.00			
6991 Refunds of a Prior Year Expenditure	426,805.80			
6999 Other Revenues Not Specified Above	107,562.20			
TOTAL Revenue from Local Sources	\$99,663,151.73			\$93,729,605.30

**Revenue Reported
In Current Year**

Revenue from State Sources

7111 Basic Education Funding-Formula	14,299,004.85		
7112 Basic Education Funding-Social Security	2,007,163.73		
7160 Tuition for Orphans Subsidy	53,941.67		
7271 Special Education funds for School-Aged Pupils	3,815,446.47		
7311 Pupil Transportation Subsidy	2,840,625.05		
7312 Nonpublic and Charter School Pupil Transportation Subsidy	317,240.00		
7320 Rental and Sinking Fund Payments / Building Reimbursement Subsidy	991,351.38		
7330 Health Services (Medical, Dental, Nurse, Act 25)	157,967.33		
7340 State Property Tax Reduction Allocation	1,221,733.95		
7361 School Safety and Security Grants	45,000.00		
7505 Ready to Learn Block Grant	684,267.00		
7506 PAsmart Grants	236.44		
7820 State Share of Retirement Contributions	9,872,518.64		
TOTAL Revenue from State Sources	\$36,306,496.51		

**Revenue Reported
In Current Year**

Revenue from Federal Sources

8190 Other Unrestricted Federal Grants-in-Aid Direct from the Federal Government	76,167.31		
8514 NCLB, Title I - Improving the Academic Achievement of the Disadvantaged	378,387.00		
8515 NCLB, Title II - Preparing, Training and Recruiting High Quality Teachers and Principals	108,881.75		
8517 NCLB, Title IV - 21St Century Schools	30,475.00		
8749 Other CARES Act Funding	2,380.34		
8810 School-Based Access Medicaid Reimbursement Program (SBAP) Reimbursements (Access)	204,742.35		
8820 Medical Assistance Reimbursement for Administrative Claiming (Quarterly) Program	4,506.70		
TOTAL Revenue from Federal Sources	\$805,540.45		

Revenue Reported
In Current Year

Other Financing Sources

9400 Sale of or Compensation for Loss of Fixed Assets	1,000.00		
TOTAL Other Financing Sources	\$1,000.00		
TOTAL FROM ALL SOURCES	\$136,776,188.69		\$93,729,605.30

	<u>General Fund (10)</u>	<u>Student Sponsored Activity Fund (21)</u>	<u>Public Purpose Trust (27)</u>	<u>Other Compt Approved (28)</u>	<u>Athletic / Activity (29)</u>	<u>Capital Reserve (690, 1850) (31)</u>
6000 Revenue from Local Sources						
6111 Current Real Estate Taxes	76,779,903.37					
6112 Interim Real Estate Taxes	741,170.70					
6113 Public Utility Realty Taxes	79,569.85					
6114 Payments in Lieu of Current Taxes - State / Local	313,314.19					
6149 Current Act 511 Taxes, Other Flat Rate Assessments	190,119.48					
6151 Current Act 511 Earned Income Taxes	11,097,781.77					
6153 Current Act 511 Real Estate Transfer Taxes	3,420,207.03					
6411 Delinquent Real Estate Taxes	905,873.75					
6431 Delinquent Act 1 Earned Income Taxes	133,521.10					
6440 Delinquent Local Enabling Taxes - Flat Rate Assessments	68,144.06					
6500 Earnings on Investments	965,542.51					
6700 Revenues from LEA Activities	375,610.73					
6831 Federal Revenue Received from Other Pennsylvania Public LEAs	4,000.00					
6832 Federal IDEA Revenue Received as Pass Through	1,468,754.79					
6839 Federal Revenue Received from Other Sources	200.00					
6910 Rentals	79,033.50					
6920 Contributions and Donations from Private Sources	44,768.62					
6941 Regular Day School Tuition	61,753.28					
6942 Summer School Tuition	85,150.00					
6944 Receipts from Other LEAs in Pennsylvania - Education	2,314,365.00					
6991 Refunds of a Prior Year Expenditure	426,805.80					
6999 Other Revenues Not Specified Above	107,562.20					
6000 Total Revenue from Local Sources	\$99,663,151.73					
7000 Revenue from State Sources						
7111 Basic Education Funding-Formula	14,299,004.85					
7112 Basic Education Funding-Social Security	2,007,163.73					
7160 Tuition for Orphans Subsidy	53,941.67					
7271 Special Education funds for School-Aged Pupils	3,815,446.47					
7311 Pupil Transportation Subsidy	2,840,625.05					
7312 Nonpublic and Charter School Pupil Transportation Subsidy	317,240.00					
7320 Rental and Sinking Fund Payments / Building Reimbursement Subsidy	991,351.38					
7330 Health Services (Medical, Dental, Nurse, Act 25)	157,967.33					
7340 State Property Tax Reduction Allocation	1,221,733.95					
7361 School Safety and Security Grants	45,000.00					
7505 Ready to Learn Block Grant	684,267.00					

LEA : 104107903 Seneca Valley SD

Printed 12/2/2020 2:22:56 PM

	<u>Capital Reserve</u> <u>(1431) (32)</u>	<u>Other Capital</u> <u>Projects Fund (39)</u>	<u>Debt Service (40)</u>	<u>Permanent (90)</u>	<u>Total</u>
6000 Revenue from Local Sources					
6111 Current Real Estate Taxes					76,779,903.37
6112 Interim Real Estate Taxes					741,170.70
6113 Public Utility Realty Taxes					79,569.85
6114 Payments in Lieu of Current Taxes - State / Local					313,314.19
6149 Current Act 511 Taxes, Other Flat Rate Assessments					190,119.48
6151 Current Act 511 Earned Income Taxes					11,097,781.77
6153 Current Act 511 Real Estate Transfer Taxes					3,420,207.03
6411 Delinquent Real Estate Taxes					905,873.75
6431 Delinquent Act 1 Earned Income Taxes					133,521.10
6440 Delinquent Local Enabling Taxes - Flat Rate Assessments					68,144.06
6500 Earnings on Investments		807,530.83			1,773,073.34
6700 Revenues from LEA Activities					375,610.73
6831 Federal Revenue Received from Other Pennsylvania Public LEAs					4,000.00
6832 Federal IDEA Revenue Received as Pass Through					1,468,754.79
6839 Federal Revenue Received from Other Sources					200.00
6910 Rentals					79,033.50
6920 Contributions and Donations from Private Sources					44,768.62
6941 Regular Day School Tuition					61,753.28
6942 Summer School Tuition					85,150.00
6944 Receipts from Other LEAs in Pennsylvania - Education					2,314,365.00
6991 Refunds of a Prior Year Expenditure					426,805.80
6999 Other Revenues Not Specified Above					107,562.20
6000 Total Revenue from Local Sources		\$807,530.83			\$100,470,682.56
7000 Revenue from State Sources					
7111 Basic Education Funding-Formula					14,299,004.85
7112 Basic Education Funding-Social Security					2,007,163.73
7160 Tuition for Orphans Subsidy					53,941.67
7271 Special Education funds for School-Aged Pupils					3,815,446.47
7311 Pupil Transportation Subsidy					2,840,625.05
7312 Nonpublic and Charter School Pupil Transportation Subsidy					317,240.00
7320 Rental and Sinking Fund Payments / Building Reimbursement Subsidy					991,351.38
7330 Health Services (Medical, Dental, Nurse, Act 25)					157,967.33
7340 State Property Tax Reduction Allocation					1,221,733.95
7361 School Safety and Security Grants					45,000.00
7505 Ready to Learn Block Grant					684,267.00

	<u>General Fund (10)</u>	<u>Student Sponsored Activity Fund (21)</u>	<u>Public Purpose Trust (27)</u>	<u>Other Compt Approved (28)</u>	<u>Athletic / Activity (29)</u>	<u>Capital Reserve (690, 1850) (31)</u>
7000 Revenue from State Sources						
7506 PAsmart Grants	236.44					
7820 State Share of Retirement Contributions	9,872,518.64					
7000 Total Revenue from State Sources	\$36,306,496.51					
8000 Revenue from Federal Sources						
8190 Other Unrestricted Federal Grants-in-Aid Direct from the Federal Government	76,167.31					
8514 NCLB, Title I - Improving the Academic Achievement of the Disadvantaged	378,387.00					
8515 NCLB, Title II - Preparing, Training and Recruiting High Quality Teachers and Principals	108,881.75					
8517 NCLB, Title IV - 21st Century Schools	30,475.00					
8749 Other CARES Act Funding	2,380.34					
8810 School-Based Access Medicaid Reimbursement Program (SBAP) Reimbursements (Access)	204,742.35					
8820 Medical Assistance Reimbursement for Administrative Claiming (Quarterly) Program	4,506.70					
8000 Total Revenue from Federal Sources	\$805,540.45					
9000 Other Financing Sources						
9120 Proceeds from Refunding of Bonds						
9130 Bond Premiums						
9310 General Fund Transfers						
9400 Sale of or Compensation for Loss of Fixed Assets	1,000.00					
9000 Total Other Financing Sources	\$1,000.00					
Total From All Sources	\$136,776,188.69					

LEA : 104107903 Seneca Valley SD

Printed 12/2/2020 2:22:56 PM

	<u>Capital Reserve</u> <u>(1431) (32)</u>	<u>Other Capital</u> <u>Projects Fund (39)</u>	<u>Debt Service (40)</u>	<u>Permanent (90)</u>	<u>Total</u>
7000 Revenue from State Sources					
7506 PAsmart Grants					236.44
7820 State Share of Retirement Contributions					9,872,518.64
7000 Total Revenue from State Sources					\$36,306,496.51
8000 Revenue from Federal Sources					
8190 Other Unrestricted Federal Grants-in-Aid Direct from the Federal Government					76,167.31
8514 NCLB, Title I - Improving the Academic Achievement of the Disadvantaged					378,387.00
8515 NCLB, Title II - Preparing, Training and Recruiting High Quality Teachers and Principals					108,881.75
8517 NCLB, Title IV - 21st Century Schools					30,475.00
8749 Other CARES Act Funding					2,380.34
8810 School-Based Access Medicaid Reimbursement Program (SBAP) Reimbursements (Access)					204,742.35
8820 Medical Assistance Reimbursement for Administrative Claiming (Quarterly) Program					4,506.70
8000 Total Revenue from Federal Sources					\$805,540.45
9000 Other Financing Sources					
9120 Proceeds from Refunding of Bonds			14,355,000.00		14,355,000.00
9130 Bond Premiums			1,820,051.00		1,820,051.00
9310 General Fund Transfers		4,000,000.00	352,533.75		4,352,533.75
9400 Sale of or Compensation for Loss of Fixed Assets					1,000.00
9000 Total Other Financing Sources		\$4,000,000.00	\$16,527,584.75		\$20,528,584.75
Total From All Sources		\$4,807,530.83	\$16,527,584.75		\$158,111,304.27

	<u>General Fund (10)</u>	<u>Student Sponsored Activity Fund (21)</u>	<u>Public Purpose Trust (27)</u>	<u>Other Compt Approved (28)</u>	<u>Athletic / Activity (29)</u>	<u>Capital Reserve (690. 1850) (31)</u>
Revenue from Local Sources	99,663,151.73					
Revenue from State Sources	36,306,496.51					
Revenue from Federal Sources	805,540.45					
Other Financing Sources	1,000.00					
Total From All Sources	\$136,776,188.69					

	<u>Capital Reserve (1431)</u> <u>(32)</u>	<u>Other Capital Projects</u> <u>Fund (39)</u>	<u>Debt Service (40)</u>	<u>Permanent (90)</u>	<u>Total</u>
Revenue from Local Sources		807,530.83			100,470,682.56
Revenue from State Sources					36,306,496.51
Revenue from Federal Sources					805,540.45
Other Financing Sources		4,000,000.00	16,527,584.75		20,528,584.75
Total From All Sources		\$4,807,530.83	\$16,527,584.75		\$158,111,304.27

LEA : 104107903 Seneca Valley SD

Printed 12/2/2020 2:23:04 PM

General Fund (10)

	<u>Total</u>
1000 Instruction	
100 Personnel Services – Salaries	
100 Personnel Services – Salaries	45,324,526.63
Total Personnel Services – Salaries	\$45,324,526.63
200 Personnel Services – Employee Benefits	
210 Group Insurance – Contracted Provider	9,305,526.74
220 Social Security Contributions	3,460,043.98
230 PSERS Retirement Contributions	15,565,286.03
250 Unemployment Compensation	110,505.76
260 Workers' Compensation	169,092.55
Total Personnel Services – Employee Benefits	\$28,610,455.06
300 Purchased Professional and Technical Services	
322 Professional Educational Services – Ius	928,175.85
329 Professional Educational Services – Other	579,565.85
330 Other Professional Services	190,394.92
390 Other Purchased Professional and Technical Services	300.00
Total Purchased Professional and Technical Services	\$1,698,436.62
400 Purchased Property Services	
430 Repairs and Maintenance Services	42,287.04
440 Rentals	406,205.61
Total Purchased Property Services	\$448,492.65
500 Other Purchased Services	
510 Student Transportation Services	1,740.10
561 Tuition To Other School Districts Within the State	36,705.54
562 Tuition To Pennsylvania Charter Schools	1,840,390.42
563 Tuition To Nonpublic Schools	1,506,366.93
564 Tuition To Career and Technology Centers	618,014.96
567 Tuition To Approved Private Schools (APS) and PA Chartered Schools for the Deaf and Blind	1,036,981.57
580 Travel	7,955.43
594 IU Payment By Withholding for Institutionalized Children's Programs – Special Classes	2,551.66
Total Other Purchased Services	\$5,050,706.61
600 Supplies	
610 General Supplies	951,790.04
620 Energy	1,236.51
640 Books and Periodicals	601,664.38
Total Supplies	\$1,554,690.93
800 Other Objects	
810 Dues and Fees	4,637.00
Total Other Objects	\$4,637.00
Total 1000 Instruction	\$82,691,945.50

General Fund (10)

1100 Regular Programs – Elementary / Secondary

	<u>Elementary</u>	<u>Secondary</u>	<u>Federal</u>	<u>Total</u>
100 Personnel Services – Salaries				
100 Personnel Services – Salaries	16,009,600.46	16,252,171.15	439,286.37	32,701,057.98
Total Personnel Services – Salaries	\$16,009,600.46	\$16,252,171.15	\$439,286.37	\$32,701,057.98
200 Personnel Services – Employee Benefits				
210 Group Insurance – Contracted Provider	3,541,498.91	3,250,807.30	10,288.09	6,802,594.30
220 Social Security Contributions	1,270,050.81	1,236,198.02	4,248.14	2,510,496.97
230 PSERS Retirement Contributions	5,665,201.15	5,537,528.74	41,198.19	11,243,928.08
250 Unemployment Compensation	41,939.41	40,964.05		82,903.46
260 Workers' Compensation	62,817.46	61,906.21		124,723.67
Total Personnel Services – Employee Benefits	\$10,581,507.74	\$10,127,404.32	\$55,734.42	\$20,764,646.48
300 Purchased Professional and Technical Services				
322 Professional Educational Services – lus	553,811.94			553,811.94
329 Professional Educational Services – Other		94,636.78		94,636.78
330 Other Professional Services	23,800.00	11,250.00		35,050.00
390 Other Purchased Professional and Technical Services		300.00		300.00
Total Purchased Professional and Technical Services	\$577,611.94	\$106,186.78		\$683,798.72
400 Purchased Property Services				
430 Repairs and Maintenance Services	14,148.15	28,138.89		42,287.04
440 Rentals	177,241.59	228,964.02		406,205.61
Total Purchased Property Services	\$191,389.74	\$257,102.91		\$448,492.65
500 Other Purchased Services				
510 Student Transportation Services	(1,132.04)	(592.35)		(1,724.39)
562 Tuition To Pennsylvania Charter Schools	246,092.63	829,730.56		1,075,823.19
580 Travel	2,782.34	275.20		3,057.54
Total Other Purchased Services	\$247,742.93	\$829,413.41		\$1,077,156.34
600 Supplies				
610 General Supplies	342,952.68	508,078.75	209.55	851,240.98
640 Books and Periodicals	335,637.63	252,971.02		588,608.65
Total Supplies	\$678,590.31	\$761,049.77	\$209.55	\$1,439,849.63
Total 1100 Regular Programs – Elementary / Secondary	\$28,286,443.12	\$28,333,328.34	\$495,230.34	\$57,115,001.80

General Fund (10)

1110 Regular Programs

	<u>Elementary</u>	<u>Secondary</u>	<u>Federal</u>	<u>Total</u>
100 Personnel Services – Salaries				
100 Personnel Services – Salaries	16,009,600.46	16,252,171.15		32,261,771.61
Total Personnel Services – Salaries	\$16,009,600.46	\$16,252,171.15		\$32,261,771.61
200 Personnel Services – Employee Benefits				
210 Group Insurance – Contracted Provider	3,541,498.91	3,250,807.30		6,792,306.21
220 Social Security Contributions	1,270,050.81	1,236,198.02		2,506,248.83
230 PSERS Retirement Contributions	5,665,201.15	5,537,528.74		11,202,729.89
250 Unemployment Compensation	41,939.41	40,964.05		82,903.46
260 Workers' Compensation	62,817.46	61,906.21		124,723.67
Total Personnel Services – Employee Benefits	\$10,581,507.74	\$10,127,404.32		\$20,708,912.06
300 Purchased Professional and Technical Services				
322 Professional Educational Services – lus	553,811.94			553,811.94
329 Professional Educational Services – Other		94,636.78		94,636.78
330 Other Professional Services	23,800.00	11,250.00		35,050.00
390 Other Purchased Professional and Technical Services		300.00		300.00
Total Purchased Professional and Technical Services	\$577,611.94	\$106,186.78		\$683,798.72
400 Purchased Property Services				
430 Repairs and Maintenance Services	14,148.15	28,138.89		42,287.04
440 Rentals	177,241.59	228,964.02		406,205.61
Total Purchased Property Services	\$191,389.74	\$257,102.91		\$448,492.65
500 Other Purchased Services				
510 Student Transportation Services	(1,132.04)	(592.35)		(1,724.39)
562 Tuition To Pennsylvania Charter Schools	246,092.63	829,730.56		1,075,823.19
580 Travel	2,782.34	275.20		3,057.54
Total Other Purchased Services	\$247,742.93	\$829,413.41		\$1,077,156.34
600 Supplies				
610 General Supplies	342,952.68	508,078.75		851,031.43
640 Books and Periodicals	335,637.63	252,971.02		588,608.65
Total Supplies	\$678,590.31	\$761,049.77		\$1,439,640.08
Total 1110 Regular Programs	\$28,286,443.12	\$28,333,328.34		\$56,619,771.46

General Fund (10)

1190 Federally-Funded Regular Programs

100 Personnel Services – Salaries

100 Personnel Services – Salaries

Total Personnel Services – Salaries

200 Personnel Services – Employee Benefits

210 Group Insurance – Contracted Provider

220 Social Security Contributions

230 PSERS Retirement Contributions

Total Personnel Services – Employee Benefits

600 Supplies

610 General Supplies

Total Supplies

Total 1190 Federally-Funded Regular Programs

	<u>Elementary</u>	<u>Secondary</u>	<u>Federal</u>	<u>Total</u>
			439,286.37	439,286.37
			\$439,286.37	\$439,286.37
			10,288.09	10,288.09
			4,248.14	4,248.14
			41,198.19	41,198.19
			\$55,734.42	\$55,734.42
			209.55	209.55
			\$209.55	\$209.55
			\$495,230.34	\$495,230.34

General Fund (10)

1200 Special Programs – Elementary / Secondary	<u>Elementary</u>	<u>Secondary</u>	<u>Federal</u>	<u>Total</u>
100 Personnel Services – Salaries				
100 Personnel Services – Salaries	4,990,969.66	5,077,167.31	535,222.07	10,603,359.04
Total Personnel Services – Salaries	\$4,990,969.66	\$5,077,167.31	\$535,222.07	\$10,603,359.04
200 Personnel Services – Employee Benefits				
210 Group Insurance – Contracted Provider	825,622.74	1,010,487.86	156,664.18	1,992,774.78
220 Social Security Contributions	391,917.06	385,517.18	32,762.45	810,196.69
230 PSERS Retirement Contributions	1,806,975.68	1,754,023.97	60,086.96	3,621,086.61
250 Unemployment Compensation	13,779.44	13,346.66	227.63	27,353.73
260 Workers' Compensation	18,931.26	16,784.30	1,386.83	37,102.39
Total Personnel Services – Employee Benefits	\$3,057,226.18	\$3,180,159.97	\$251,128.05	\$6,488,514.20
300 Purchased Professional and Technical Services				
322 Professional Educational Services – lus	101,381.07	85,270.50	187,712.34	374,363.91
329 Professional Educational Services – Other	336,613.48	119,573.09	3,382.50	459,569.07
330 Other Professional Services	78,903.50	67,581.42	1,360.00	147,844.92
Total Purchased Professional and Technical Services	\$516,898.05	\$272,425.01	\$192,454.84	\$981,777.90
500 Other Purchased Services				
510 Student Transportation Services		3,464.49		3,464.49
561 Tuition To Other School Districts Within the State	664.24	27,908.63		28,572.87
562 Tuition To Pennsylvania Charter Schools	200,477.50	452,286.54	111,803.19	764,567.23
563 Tuition To Nonpublic Schools	107,511.97	789,643.10	586,271.86	1,483,426.93
567 Tuition To Approved Private Schools (APS) and PA Chartered Schools for the Deaf and Blind	514,949.62	522,031.95		1,036,981.57
580 Travel	2,419.44	2,478.45		4,897.89
594 IU Payment By Withholding for Institutionalized Children's Programs – Special Classes	2,551.66			2,551.66
Total Other Purchased Services	\$828,574.43	\$1,797,813.16	\$698,075.05	\$3,324,462.64
600 Supplies				
610 General Supplies	31,392.76	19,135.50		50,528.26
620 Energy		1,236.51		1,236.51
640 Books and Periodicals	4,854.03	8,201.70		13,055.73
Total Supplies	\$36,246.79	\$28,573.71		\$64,820.50
800 Other Objects				
810 Dues and Fees	2,593.00	2,044.00		4,637.00
Total Other Objects	\$2,593.00	\$2,044.00		\$4,637.00
Total 1200 Special Programs – Elementary / Secondary	\$9,432,508.11	\$10,358,183.16	\$1,676,880.01	\$21,467,571.28

General Fund (10)

1210 Life Skills Support

	<u>Elementary</u>	<u>Secondary</u>	<u>Federal</u>	<u>Total</u>
100 Personnel Services – Salaries				
100 Personnel Services – Salaries	53,634.17	104,807.21		158,441.38
Total Personnel Services – Salaries	\$53,634.17	\$104,807.21		\$158,441.38
200 Personnel Services – Employee Benefits				
210 Group Insurance – Contracted Provider	7,764.11	13,484.28		21,248.39
220 Social Security Contributions	4,103.14	8,001.84		12,104.98
230 PSERS Retirement Contributions	18,391.18	35,938.33		54,329.51
250 Unemployment Compensation	29.96	20.10		50.06
260 Workers' Compensation	144.01			144.01
Total Personnel Services – Employee Benefits	\$30,432.40	\$57,444.55		\$87,876.95
300 Purchased Professional and Technical Services				
322 Professional Educational Services – lus	250.00	1,269.87		1,519.87
Total Purchased Professional and Technical Services	\$250.00	\$1,269.87		\$1,519.87
500 Other Purchased Services				
563 Tuition To Nonpublic Schools		257,583.71		257,583.71
Total Other Purchased Services		\$257,583.71		\$257,583.71
600 Supplies				
610 General Supplies	798.62	3,844.34		4,642.96
620 Energy		1,236.51		1,236.51
Total Supplies	\$798.62	\$5,080.85		\$5,879.47
Total 1210 Life Skills Support	\$85,115.19	\$426,186.19		\$511,301.38

General Fund (10)

1220 Sensory Support

	<u>Elementary</u>	<u>Secondary</u>	<u>Federal</u>	<u>Total</u>
100 Personnel Services – Salaries				
100 Personnel Services – Salaries	856,507.80	219,131.90		1,075,639.70
Total Personnel Services – Salaries	\$856,507.80	\$219,131.90		\$1,075,639.70
200 Personnel Services – Employee Benefits				
210 Group Insurance – Contracted Provider	183,993.70	42,178.08		226,171.78
220 Social Security Contributions	64,940.41	16,757.40		81,697.81
230 PSERS Retirement Contributions	293,786.32	74,554.09		368,340.41
250 Unemployment Compensation	105.13	29.26		134.39
260 Workers' Compensation	3,367.51	478.59		3,846.10
Total Personnel Services – Employee Benefits	\$546,193.07	\$133,997.42		\$680,190.49
300 Purchased Professional and Technical Services				
322 Professional Educational Services – lus	33,460.33	40,774.50		74,234.83
329 Professional Educational Services – Other	31,460.20	45,797.15		77,257.35
Total Purchased Professional and Technical Services	\$64,920.53	\$86,571.65		\$151,492.18
500 Other Purchased Services				
580 Travel	46.32			46.32
Total Other Purchased Services	\$46.32			\$46.32
600 Supplies				
610 General Supplies	1,767.57			1,767.57
Total Supplies	\$1,767.57			\$1,767.57
800 Other Objects				
810 Dues and Fees	2,025.00	225.00		2,250.00
Total Other Objects	\$2,025.00	\$225.00		\$2,250.00
Total 1220 Sensory Support	\$1,471,460.29	\$439,925.97		\$1,911,386.26

General Fund (10)

1230 Emotional Support

	<u>Elementary</u>	<u>Secondary</u>	<u>Federal</u>	<u>Total</u>
100 Personnel Services – Salaries				
100 Personnel Services – Salaries	327,888.14	355,987.47	468,132.07	1,152,007.68
Total Personnel Services – Salaries	\$327,888.14	\$355,987.47	\$468,132.07	\$1,152,007.68
200 Personnel Services – Employee Benefits				
210 Group Insurance – Contracted Provider	122,159.44	59,145.21	141,042.22	322,346.87
220 Social Security Contributions	39,436.44	30,239.73	29,096.02	98,772.19
230 PSERS Retirement Contributions	231,534.05	150,170.00	60,086.96	441,791.01
250 Unemployment Compensation	110.96	(13.01)	131.77	229.72
260 Workers' Compensation	1,572.89	737.19	1,051.38	3,361.46
Total Personnel Services – Employee Benefits	\$394,813.78	\$240,279.12	\$231,408.35	\$866,501.25
300 Purchased Professional and Technical Services				
322 Professional Educational Services – lus	640.00	3,397.78		4,037.78
329 Professional Educational Services – Other	806.21			806.21
330 Other Professional Services		572.25		572.25
Total Purchased Professional and Technical Services	\$1,446.21	\$3,970.03		\$5,416.24
500 Other Purchased Services				
563 Tuition To Nonpublic Schools	107,511.97	492,959.39	586,271.86	1,186,743.22
580 Travel	199.83	143.26		343.09
Total Other Purchased Services	\$107,711.80	\$493,102.65	\$586,271.86	\$1,187,086.31
600 Supplies				
610 General Supplies	1,052.70	138.84		1,191.54
Total Supplies	\$1,052.70	\$138.84		\$1,191.54
Total 1230 Emotional Support	\$832,912.63	\$1,093,478.11	\$1,285,812.28	\$3,212,203.02

General Fund (10)

1240 Academic Support

	<u>Elementary</u>	<u>Secondary</u>	<u>Federal</u>	<u>Total</u>
100 Personnel Services – Salaries				
100 Personnel Services – Salaries	3,752,939.55	4,206,714.26		7,959,653.81
Total Personnel Services – Salaries	\$3,752,939.55	\$4,206,714.26		\$7,959,653.81
200 Personnel Services – Employee Benefits				
210 Group Insurance – Contracted Provider	511,705.49	877,948.73		1,389,654.22
220 Social Security Contributions	283,437.07	313,578.20	1,100.24	598,115.51
230 PSERS Retirement Contributions	1,263,264.13	1,405,549.50		2,668,813.63
250 Unemployment Compensation	13,533.39	13,317.63	28.77	26,879.79
260 Workers' Compensation	13,846.85	14,701.68		28,548.53
Total Personnel Services – Employee Benefits	\$2,085,786.93	\$2,625,095.74	\$1,129.01	\$4,712,011.68
300 Purchased Professional and Technical Services				
322 Professional Educational Services – lus	32,846.20	11,173.35	179,374.34	223,393.89
330 Other Professional Services	78,903.50	67,009.17		145,912.67
Total Purchased Professional and Technical Services	\$111,749.70	\$78,182.52	\$179,374.34	\$369,306.56
500 Other Purchased Services				
510 Student Transportation Services		2,234.81		2,234.81
561 Tuition To Other School Districts Within the State	664.24	27,908.63		28,572.87
562 Tuition To Pennsylvania Charter Schools	200,477.50	452,286.54	111,803.19	764,567.23
563 Tuition To Nonpublic Schools		39,100.00		39,100.00
580 Travel	2,173.29	2,076.91		4,250.20
Total Other Purchased Services	\$203,315.03	\$523,606.89	\$111,803.19	\$838,725.11
600 Supplies				
610 General Supplies	27,773.87	15,152.32		42,926.19
640 Books and Periodicals	4,854.03	8,201.70		13,055.73
Total Supplies	\$32,627.90	\$23,354.02		\$55,981.92
800 Other Objects				
810 Dues and Fees	568.00	1,819.00		2,387.00
Total Other Objects	\$568.00	\$1,819.00		\$2,387.00
Total 1240 Academic Support	\$6,186,987.11	\$7,458,772.43	\$292,306.54	\$13,938,066.08

General Fund (10)

	<u>Elementary</u>	<u>Secondary</u>	<u>Federal</u>	<u>Total</u>
1241 Learning Support – Public				
100 Personnel Services – Salaries				
100 Personnel Services – Salaries	3,080,250.20	3,606,529.99		6,686,780.19
Total Personnel Services – Salaries	\$3,080,250.20	\$3,606,529.99		\$6,686,780.19
200 Personnel Services – Employee Benefits				
210 Group Insurance – Contracted Provider	415,252.53	748,524.39		1,163,776.92
220 Social Security Contributions	232,801.13	268,004.83	1,100.24	501,906.20
230 PSERS Retirement Contributions	1,036,765.91	1,200,969.50		2,237,735.41
250 Unemployment Compensation	13,454.53	13,246.99	28.77	26,730.29
260 Workers' Compensation	11,349.30	12,179.20		23,528.50
Total Personnel Services – Employee Benefits	\$1,709,623.40	\$2,242,924.91	\$1,129.01	\$3,953,677.32
300 Purchased Professional and Technical Services				
322 Professional Educational Services – lus	32,846.20	11,173.35	179,374.34	223,393.89
330 Other Professional Services	78,903.50	67,009.17		145,912.67
Total Purchased Professional and Technical Services	\$111,749.70	\$78,182.52	\$179,374.34	\$369,306.56
500 Other Purchased Services				
561 Tuition To Other School Districts Within the State	664.24	27,908.63		28,572.87
562 Tuition To Pennsylvania Charter Schools	200,477.50	452,286.54	111,803.19	764,567.23
563 Tuition To Nonpublic Schools		39,100.00		39,100.00
580 Travel	1,962.17	1,873.67		3,835.84
Total Other Purchased Services	\$203,103.91	\$521,168.84	\$111,803.19	\$836,075.94
600 Supplies				
610 General Supplies	24,584.13	13,655.60		38,239.73
640 Books and Periodicals	4,826.86	7,416.45		12,243.31
Total Supplies	\$29,410.99	\$21,072.05		\$50,483.04
Total 1241 Learning Support – Public	\$5,134,138.20	\$6,469,878.31	\$292,306.54	\$11,896,323.05

General Fund (10)

1243 Gifted Support

	<u>Elementary</u>	<u>Secondary</u>	<u>Federal</u>	<u>Total</u>
100 Personnel Services – Salaries				
100 Personnel Services – Salaries	672,689.35	600,184.27		1,272,873.62
Total Personnel Services – Salaries	\$672,689.35	\$600,184.27		\$1,272,873.62
200 Personnel Services – Employee Benefits				
210 Group Insurance – Contracted Provider	96,452.96	129,424.34		225,877.30
220 Social Security Contributions	50,635.94	45,573.37		96,209.31
230 PSERS Retirement Contributions	226,498.22	204,580.00		431,078.22
250 Unemployment Compensation	78.86	70.64		149.50
260 Workers' Compensation	2,497.55	2,522.48		5,020.03
Total Personnel Services – Employee Benefits	\$376,163.53	\$382,170.83		\$758,334.36
500 Other Purchased Services				
510 Student Transportation Services		2,234.81		2,234.81
580 Travel	211.12	203.24		414.36
Total Other Purchased Services	\$211.12	\$2,438.05		\$2,649.17
600 Supplies				
610 General Supplies	3,189.74	1,496.72		4,686.46
640 Books and Periodicals	27.17	785.25		812.42
Total Supplies	\$3,216.91	\$2,281.97		\$5,498.88
800 Other Objects				
810 Dues and Fees	568.00	1,819.00		2,387.00
Total Other Objects	\$568.00	\$1,819.00		\$2,387.00
Total 1243 Gifted Support	\$1,052,848.91	\$988,894.12		\$2,041,743.03

LEA : 104107903 Seneca Valley SD

Printed 12/2/2020 2:23:04 PM

General Fund (10)

1270 Multi-Handicapped Support

300 Purchased Professional and Technical Services

322 Professional Educational Services – Ius

329 Professional Educational Services – Other

Total Purchased Professional and Technical Services

Total 1270 Multi-Handicapped Support

<u>Elementary</u>	<u>Secondary</u>	<u>Federal</u>	<u>Total</u>
	28,655.00		28,655.00
		3,382.50	3,382.50
	\$28,655.00	\$3,382.50	\$32,037.50
	\$28,655.00	\$3,382.50	\$32,037.50

General Fund (10)

1280 Early Intervention Support

300 Purchased Professional and Technical Services

322 Professional Educational Services – lus

Total Purchased Professional and Technical Services

Total 1280 Early Intervention Support

	<u>Elementary</u>	<u>Secondary</u>	<u>Federal</u>	<u>Total</u>
	34,184.54		8,338.00	42,522.54
	\$34,184.54		\$8,338.00	\$42,522.54
	\$34,184.54		\$8,338.00	\$42,522.54

General Fund (10)

	<u>Elementary</u>	<u>Secondary</u>	<u>Federal</u>	<u>Total</u>
1290 Special Programs - Other Support				
100 Personnel Services – Salaries				
100 Personnel Services – Salaries		190,526.47	67,090.00	257,616.47
Total Personnel Services – Salaries		\$190,526.47	\$67,090.00	\$257,616.47
200 Personnel Services – Employee Benefits				
210 Group Insurance – Contracted Provider		17,731.56	15,621.96	33,353.52
220 Social Security Contributions		16,940.01	2,566.19	19,506.20
230 PSERS Retirement Contributions		87,812.05		87,812.05
250 Unemployment Compensation		(7.32)	67.09	59.77
260 Workers' Compensation		866.84	335.45	1,202.29
Total Personnel Services – Employee Benefits		\$123,343.14	\$18,590.69	\$141,933.83
300 Purchased Professional and Technical Services				
329 Professional Educational Services – Other	304,347.07	73,775.94		378,123.01
330 Other Professional Services			1,360.00	1,360.00
Total Purchased Professional and Technical Services	\$304,347.07	\$73,775.94	\$1,360.00	\$379,483.01
500 Other Purchased Services				
510 Student Transportation Services		1,229.68		1,229.68
567 Tuition To Approved Private Schools (APS) and PA Chartered Schools for the Deaf and Blind	514,949.62	522,031.95		1,036,981.57
580 Travel		258.28		258.28
594 IU Payment By Withholding for Institutionalized Children’s Programs – Special Classes	2,551.66			2,551.66
Total Other Purchased Services	\$517,501.28	\$523,519.91		\$1,041,021.19
Total 1290 Special Programs - Other Support	\$821,848.35	\$911,165.46	\$87,040.69	\$1,820,054.50

General Fund (10)

1300 Vocational Education

	<u>Elementary</u>	<u>Secondary</u>	<u>Federal</u>	<u>Total</u>
100 Personnel Services – Salaries				
100 Personnel Services – Salaries		1,869,619.11		1,869,619.11
Total Personnel Services – Salaries		\$1,869,619.11		\$1,869,619.11
200 Personnel Services – Employee Benefits				
210 Group Insurance – Contracted Provider		493,182.22		493,182.22
220 Social Security Contributions		127,841.47		127,841.47
230 PSERS Retirement Contributions		648,668.20		648,668.20
250 Unemployment Compensation		234.04		234.04
260 Workers' Compensation		6,736.66		6,736.66
Total Personnel Services – Employee Benefits		\$1,276,662.59		\$1,276,662.59
300 Purchased Professional and Technical Services				
330 Other Professional Services		7,500.00		7,500.00
Total Purchased Professional and Technical Services		\$7,500.00		\$7,500.00
500 Other Purchased Services				
564 Tuition To Career and Technology Centers		618,014.96		618,014.96
Total Other Purchased Services		\$618,014.96		\$618,014.96
600 Supplies				
610 General Supplies		50,020.80		50,020.80
Total Supplies		\$50,020.80		\$50,020.80
Total 1300 Vocational Education		\$3,821,817.46		\$3,821,817.46

General Fund (10)

1400 Other Instructional Programs – Elementary / Secondary	<u>Elementary</u>	<u>Secondary</u>	<u>Federal</u>	<u>Total</u>
100 Personnel Services – Salaries				
100 Personnel Services – Salaries		150,490.50		150,490.50
Total Personnel Services – Salaries		\$150,490.50		\$150,490.50
200 Personnel Services – Employee Benefits				
210 Group Insurance – Contracted Provider		16,975.44		16,975.44
220 Social Security Contributions		11,508.85		11,508.85
230 PSERS Retirement Contributions		51,603.14		51,603.14
250 Unemployment Compensation		14.53		14.53
260 Workers' Compensation		529.83		529.83
Total Personnel Services – Employee Benefits		\$80,631.79		\$80,631.79
500 Other Purchased Services				
561 Tuition To Other School Districts Within the State		8,132.67		8,132.67
563 Tuition To Nonpublic Schools		22,940.00		22,940.00
Total Other Purchased Services		\$31,072.67		\$31,072.67
Total 1400 Other Instructional Programs – Elementary / Secondary		\$262,194.96		\$262,194.96

General Fund (10)

1420 Summer School

100 Personnel Services – Salaries

	<u>Elementary</u>	<u>Secondary</u>	<u>Federal</u>	<u>Total</u>
100 Personnel Services – Salaries		56,748.07		56,748.07
Total Personnel Services – Salaries		\$56,748.07		\$56,748.07
200 Personnel Services – Employee Benefits				
220 Social Security Contributions		4,338.64		4,338.64
230 PSERS Retirement Contributions		19,458.93		19,458.93
250 Unemployment Compensation		1.35		1.35
260 Workers' Compensation		82.20		82.20
Total Personnel Services – Employee Benefits		\$23,881.12		\$23,881.12
Total 1420 Summer School		\$80,629.19		\$80,629.19

Total Personnel Services – Salaries

200 Personnel Services – Employee Benefits

General Fund (10)

1430 Homebound Instruction

100 Personnel Services – Salaries

100 Personnel Services – Salaries

Total Personnel Services – Salaries

200 Personnel Services – Employee Benefits

220 Social Security Contributions

230 PSERS Retirement Contributions

250 Unemployment Compensation

260 Workers' Compensation

Total Personnel Services – Employee Benefits

Total 1430 Homebound Instruction

	<u>Elementary</u>	<u>Secondary</u>	<u>Federal</u>	<u>Total</u>
		5,056.43		5,056.43
		\$5,056.43		\$5,056.43
		385.77		385.77
		1,733.83		1,733.83
		3.18		3.18
		4.08		4.08
		\$2,126.86		\$2,126.86
		\$7,183.29		\$7,183.29

General Fund (10)

1440 Alternative Regular Education Programs

Elementary

Secondary

Federal

Total

100 Personnel Services – Salaries

100 Personnel Services – Salaries

88,686.00

88,686.00

Total Personnel Services – Salaries

\$88,686.00

\$88,686.00

200 Personnel Services – Employee Benefits

210 Group Insurance – Contracted Provider

16,975.44

16,975.44

220 Social Security Contributions

6,784.44

6,784.44

230 PSERS Retirement Contributions

30,410.38

30,410.38

250 Unemployment Compensation

10.00

10.00

260 Workers' Compensation

443.55

443.55

Total Personnel Services – Employee Benefits

\$54,623.81

\$54,623.81

500 Other Purchased Services

561 Tuition To Other School Districts Within the State

8,132.67

8,132.67

563 Tuition To Nonpublic Schools

22,940.00

22,940.00

Total Other Purchased Services

\$31,072.67

\$31,072.67

Total 1440 Alternative Regular Education Programs

\$174,382.48

\$174,382.48

General Fund (10)

1441 Adjudicated / Court-Placed Programs

Elementary

Secondary

Federal

Total

500 Other Purchased Services

561 Tuition To Other School Districts Within the State

8,132.67

8,132.67

Total Other Purchased Services

\$8,132.67

\$8,132.67

Total 1441 Adjudicated / Court-Placed Programs

\$8,132.67

\$8,132.67

General Fund (10)

1442 Alternative Education Programs

100 Personnel Services – Salaries

100 Personnel Services – Salaries

Total Personnel Services – Salaries

200 Personnel Services – Employee Benefits

210 Group Insurance – Contracted Provider

220 Social Security Contributions

230 PSERS Retirement Contributions

250 Unemployment Compensation

260 Workers' Compensation

Total Personnel Services – Employee Benefits

500 Other Purchased Services

563 Tuition To Nonpublic Schools

Total Other Purchased Services

Total 1442 Alternative Education Programs

	<u>Elementary</u>	<u>Secondary</u>	<u>Federal</u>	<u>Total</u>
		88,686.00		88,686.00
		\$88,686.00		\$88,686.00
		16,975.44		16,975.44
		6,784.44		6,784.44
		30,410.38		30,410.38
		10.00		10.00
		443.55		443.55
		\$54,623.81		\$54,623.81
		22,940.00		22,940.00
		\$22,940.00		\$22,940.00
		\$166,249.81		\$166,249.81

General Fund (10)

1500 Nonpublic School Programs

300 Purchased Professional and Technical Services

329 Professional Educational Services – Other

Total Purchased Professional and Technical Services

Total 1500 Nonpublic School Programs

Elementary

Secondary

Federal

Total

25,360.00

25,360.00

\$25,360.00

\$25,360.00

\$25,360.00

\$25,360.00

General Fund (10)

2000 Support Services

Total

100 Personnel Services – Salaries

100 Personnel Services – Salaries 11,684,020.43

Total Personnel Services – Salaries \$11,684,020.43

200 Personnel Services – Employee Benefits

210 Group Insurance – Contracted Provider 2,705,535.66

220 Social Security Contributions 867,167.89

230 PSERS Retirement Contributions 3,935,842.43

240 Tuition Reimbursement 187,135.00

250 Unemployment Compensation 1,782.29

260 Workers' Compensation 33,211.93

Total Personnel Services – Employee Benefits \$7,730,675.20

300 Purchased Professional and Technical Services

310 Official / Administrative Services 68,404.52

329 Professional Educational Services – Other 573,559.17

330 Other Professional Services 293,012.36

340 Technical Services 86,353.01

360 Employee Training and Development Services 66,172.14

390 Other Purchased Professional and Technical Services 7,949.04

Total Purchased Professional and Technical Services \$1,095,450.24

400 Purchased Property Services

410 Cleaning Services 1,676,407.17

420 Utility Services 806,834.66

430 Repairs and Maintenance Services 432,604.70

440 Rentals 24,979.16

490 Other Purchased Property Services 7,554.00

Total Purchased Property Services \$2,948,379.69

500 Other Purchased Services

510 Student Transportation Services 325.90

513 Contracted Carriers 6,075,445.24

516 Student Transportation Services From the IU 838.08

520 Insurance – General 80,522.25

521 Fire Insurance 162,405.00

522 Automotive Liability Insurance 8,555.00

523 General Property and Liability Insurance 10,080.00

530 Communications 174,076.09

549 Other Advertising/Public Relations 7,402.58

550 Printing and Binding 35,337.03

580 Travel 15,787.81

591 Services Purchased Locally 3,241.12

595 IU Payments By Withholding 143,338.45

Total Other Purchased Services \$6,717,354.55

600 Supplies

610 General Supplies 567,394.42

620 Energy 221,381.37

LEA : 104107903 Seneca Valley SD

Printed 12/2/2020 2:23:12 PM

General Fund (10)

2000 Support Services

Total

600 Supplies

640 Books and Periodicals 37,358.51

650 Supplies & Fees – Technology Related 1,462,279.84

Total Supplies \$2,288,414.14

700 Property

752 Capital Equipment – Original and Additional 29,818.60

756 Capitalized Technology Equipment – Original 533,333.75

762 Capitalized Equipment - Replacement 43,867.75

Total Property \$607,020.10

800 Other Objects

810 Dues and Fees 60,220.62

820 Claims and Judgments Against the LEA 1,225.88

890 Miscellaneous Expenditures 6,688.52

Total Other Objects \$68,135.02

Total 2000 Support Services \$33,139,449.37

General Fund (10)

2100 Support Services – Students

100 Personnel Services – Salaries

	<u>Elementary</u>	<u>Secondary</u>	<u>Federal</u>	<u>Total</u>
100 Personnel Services – Salaries	992,618.54	1,348,984.62		2,380,651.80
Total Personnel Services – Salaries	\$992,618.54	\$1,348,984.62		\$2,380,651.80

200 Personnel Services – Employee Benefits

210 Group Insurance – Contracted Provider	196,764.47	293,945.72		509,351.95
220 Social Security Contributions	74,402.09	101,774.51		178,974.18
230 PSERS Retirement Contributions	335,381.35	457,914.91		806,468.82
250 Unemployment Compensation	151.66	192.67		354.31
260 Workers' Compensation	1,931.08	4,932.92		6,867.13
Total Personnel Services – Employee Benefits	\$608,630.65	\$858,760.73		\$1,502,016.39

300 Purchased Professional and Technical Services

329 Professional Educational Services – Other	37,432.62	28,436.62		65,869.24
330 Other Professional Services	4,500.00	4,875.00		9,375.00
Total Purchased Professional and Technical Services	\$41,932.62	\$33,311.62		\$75,244.24

500 Other Purchased Services

510 Student Transportation Services		325.90		325.90
580 Travel	292.84			292.84
Total Other Purchased Services	\$292.84	\$325.90		\$618.74

600 Supplies

610 General Supplies	13,122.97	7,969.32		21,092.29
640 Books and Periodicals		159.84		159.84
Total Supplies	\$13,122.97	\$8,129.16		\$21,252.13

800 Other Objects

810 Dues and Fees	1,050.00	1,284.00		2,334.00
Total Other Objects	\$1,050.00	\$1,284.00		\$2,334.00

Total 2100 Support Services – Students

	\$1,657,647.62	\$2,250,796.03		\$3,982,117.30
--	-----------------------	-----------------------	--	-----------------------

General Fund (10)

	<u>Elementary</u>	<u>Secondary</u>	<u>Federal</u>	<u>Total</u>
2120 Guidance Services				
100 Personnel Services – Salaries				
100 Personnel Services – Salaries	611,693.95	1,168,707.44		1,780,401.39
Total Personnel Services – Salaries	\$611,693.95	\$1,168,707.44		\$1,780,401.39
200 Personnel Services – Employee Benefits				
210 Group Insurance – Contracted Provider	98,970.90	252,934.38		351,905.28
220 Social Security Contributions	46,376.44	88,716.76		135,093.20
230 PSERS Retirement Contributions	206,695.42	399,218.73		605,914.15
250 Unemployment Compensation	84.99	169.29		254.28
260 Workers' Compensation	903.04	4,077.26		4,980.30
Total Personnel Services – Employee Benefits	\$353,030.79	\$745,116.42		\$1,098,147.21
300 Purchased Professional and Technical Services				
329 Professional Educational Services – Other	346.37	426.80		773.17
330 Other Professional Services		1,875.00		1,875.00
Total Purchased Professional and Technical Services	\$346.37	\$2,301.80		\$2,648.17
500 Other Purchased Services				
510 Student Transportation Services		325.90		325.90
Total Other Purchased Services		\$325.90		\$325.90
600 Supplies				
610 General Supplies	5,861.58	2,127.60		7,989.18
640 Books and Periodicals		159.84		159.84
Total Supplies	\$5,861.58	\$2,287.44		\$8,149.02
800 Other Objects				
810 Dues and Fees		289.00		289.00
Total Other Objects		\$289.00		\$289.00
Total 2120 Guidance Services	\$970,932.69	\$1,919,028.00		\$2,889,960.69

General Fund (10)

2140 Psychological Services

	<u>Elementary</u>	<u>Secondary</u>	<u>Federal</u>	<u>Total</u>
100 Personnel Services – Salaries				
100 Personnel Services – Salaries	380,924.59	180,277.18		561,201.77
Total Personnel Services – Salaries	\$380,924.59	\$180,277.18		\$561,201.77
200 Personnel Services – Employee Benefits				
210 Group Insurance – Contracted Provider	97,793.57	41,011.34		138,804.91
220 Social Security Contributions	28,025.65	13,057.75		41,083.40
230 PSERS Retirement Contributions	128,685.93	58,696.18		187,382.11
250 Unemployment Compensation	66.67	23.38		90.05
260 Workers' Compensation	1,028.04	855.66		1,883.70
Total Personnel Services – Employee Benefits	\$255,599.86	\$113,644.31		\$369,244.17
300 Purchased Professional and Technical Services				
329 Professional Educational Services – Other	33,146.25	25,646.32		58,792.57
330 Other Professional Services	4,500.00	3,000.00		7,500.00
Total Purchased Professional and Technical Services	\$37,646.25	\$28,646.32		\$66,292.57
500 Other Purchased Services				
580 Travel	292.84			292.84
Total Other Purchased Services	\$292.84			\$292.84
600 Supplies				
610 General Supplies	7,261.39	5,841.72		13,103.11
Total Supplies	\$7,261.39	\$5,841.72		\$13,103.11
800 Other Objects				
810 Dues and Fees	1,050.00	995.00		2,045.00
Total Other Objects	\$1,050.00	\$995.00		\$2,045.00
Total 2140 Psychological Services	\$682,774.93	\$329,404.53		\$1,012,179.46

General Fund (10)

2150 Speech Pathology and Audiology Services

300 Purchased Professional and Technical Services

329 Professional Educational Services – Other

Total Purchased Professional and Technical Services

Total 2150 Speech Pathology and Audiology Services

	<u>Elementary</u>	<u>Secondary</u>	<u>Federal</u>	<u>Total</u>
	3,940.00	2,363.50		6,303.50
	\$3,940.00	\$2,363.50		\$6,303.50
	\$3,940.00	\$2,363.50		\$6,303.50

General Fund (10)

2170 Student Accounting Services

Elementary

Secondary

Federal

Total

100 Personnel Services – Salaries

100 Personnel Services – Salaries

39,048.64

Total Personnel Services – Salaries

\$39,048.64

200 Personnel Services – Employee Benefits

210 Group Insurance – Contracted Provider

18,641.76

220 Social Security Contributions

2,797.58

230 PSERS Retirement Contributions

13,172.56

250 Unemployment Compensation

9.98

260 Workers' Compensation

3.13

Total Personnel Services – Employee Benefits

\$34,625.01

Total 2170 Student Accounting Services

\$73,673.65

General Fund (10)

	<u>Elementary</u>	<u>Secondary</u>	<u>Federal</u>	<u>Total</u>
2200 Support Services – Instructional Staff				
100 Personnel Services – Salaries				
100 Personnel Services – Salaries	778,405.08	624,855.64		1,403,260.72
Total Personnel Services – Salaries	\$778,405.08	\$624,855.64		\$1,403,260.72
200 Personnel Services – Employee Benefits				
210 Group Insurance – Contracted Provider	165,662.65	163,026.04		328,688.69
220 Social Security Contributions	56,088.16	44,570.00		100,658.16
230 PSERS Retirement Contributions	262,344.84	212,702.08		475,046.92
240 Tuition Reimbursement	95,328.00	40,039.00		135,367.00
250 Unemployment Compensation	85.28	72.75		158.03
260 Workers' Compensation	2,768.01	1,688.00		4,456.01
Total Personnel Services – Employee Benefits	\$582,276.94	\$462,097.87		\$1,044,374.81
300 Purchased Professional and Technical Services				
329 Professional Educational Services – Other	1,974.63		567.00	2,541.63
330 Other Professional Services	3,000.00	7,250.00		10,250.00
360 Employee Training and Development Services	3,424.35	45,091.72		48,516.07
390 Other Purchased Professional and Technical Services		5,827.21		5,827.21
Total Purchased Professional and Technical Services	\$8,398.98	\$58,168.93	\$567.00	\$67,134.91
500 Other Purchased Services				
580 Travel	1,241.96	910.41		2,152.37
Total Other Purchased Services	\$1,241.96	\$910.41		\$2,152.37
600 Supplies				
610 General Supplies	3,882.67	5,898.57		9,781.24
640 Books and Periodicals	27,877.04	6,619.77		34,496.81
650 Supplies & Fees – Technology Related		12,695.19		12,695.19
Total Supplies	\$31,759.71	\$25,213.53		\$56,973.24
800 Other Objects				
810 Dues and Fees	2,625.00	3,130.00		5,755.00
Total Other Objects	\$2,625.00	\$3,130.00		\$5,755.00
Total 2200 Support Services – Instructional Staff	\$1,404,707.67	\$1,174,376.38	\$567.00	\$2,579,651.05

General Fund (10)

2220 Technology Support Services

Elementary

Secondary

Federal

Total

600 Supplies

650 Supplies & Fees – Technology Related

12,485.19

12,485.19

Total Supplies

\$12,485.19

\$12,485.19

Total 2220 Technology Support Services

\$12,485.19

\$12,485.19

General Fund (10)

2240 Computer-Assisted Instruction Support Services

Elementary

Secondary

Federal

Total

600 Supplies

650 Supplies & Fees – Technology Related

210.00

210.00

Total Supplies

\$210.00

\$210.00

Total 2240 Computer-Assisted Instruction Support Services

\$210.00

\$210.00

General Fund (10)

	<u>Elementary</u>	<u>Secondary</u>	<u>Federal</u>	<u>Total</u>
2250 School Library Services				
100 Personnel Services – Salaries				
100 Personnel Services – Salaries	429,615.82	248,775.19		678,391.01
Total Personnel Services – Salaries	\$429,615.82	\$248,775.19		\$678,391.01
200 Personnel Services – Employee Benefits				
210 Group Insurance – Contracted Provider	100,424.28	80,397.38		180,821.66
220 Social Security Contributions	32,608.45	19,031.65		51,640.10
230 PSERS Retirement Contributions	146,677.72	84,029.39		230,707.11
250 Unemployment Compensation	52.63	32.28		84.91
260 Workers' Compensation	1,806.11	495.76		2,301.87
Total Personnel Services – Employee Benefits	\$281,569.19	\$183,986.46		\$465,555.65
300 Purchased Professional and Technical Services				
330 Other Professional Services		3,750.00		3,750.00
390 Other Purchased Professional and Technical Services		2,244.26		2,244.26
Total Purchased Professional and Technical Services		\$5,994.26		\$5,994.26
600 Supplies				
610 General Supplies	3,882.67	1,010.07		4,892.74
640 Books and Periodicals	5,167.37	6,619.77		11,787.14
Total Supplies	\$9,050.04	\$7,629.84		\$16,679.88
Total 2250 School Library Services	\$720,235.05	\$446,385.75		\$1,166,620.80

General Fund (10)

	<u>Elementary</u>	<u>Secondary</u>	<u>Federal</u>	<u>Total</u>
2260 Instruction and Curriculum Development Services				
100 Personnel Services – Salaries				
100 Personnel Services – Salaries	330,429.82	369,757.54		700,187.36
Total Personnel Services – Salaries	\$330,429.82	\$369,757.54		\$700,187.36
200 Personnel Services – Employee Benefits				
210 Group Insurance – Contracted Provider	65,238.37	82,628.66		147,867.03
220 Social Security Contributions	22,080.82	25,054.65		47,135.47
230 PSERS Retirement Contributions	109,371.67	126,504.57		235,876.24
250 Unemployment Compensation	30.02	39.99		70.01
260 Workers' Compensation	923.00	1,172.86		2,095.86
Total Personnel Services – Employee Benefits	\$197,643.88	\$235,400.73		\$433,044.61
300 Purchased Professional and Technical Services				
329 Professional Educational Services – Other	1,974.63			1,974.63
330 Other Professional Services	3,000.00	3,500.00		6,500.00
Total Purchased Professional and Technical Services	\$4,974.63	\$3,500.00		\$8,474.63
500 Other Purchased Services				
580 Travel	1,005.52	910.41		1,915.93
Total Other Purchased Services	\$1,005.52	\$910.41		\$1,915.93
600 Supplies				
610 General Supplies		4,064.37		4,064.37
640 Books and Periodicals	22,709.67			22,709.67
Total Supplies	\$22,709.67	\$4,064.37		\$26,774.04
800 Other Objects				
810 Dues and Fees	2,625.00	1,835.00		4,460.00
Total Other Objects	\$2,625.00	\$1,835.00		\$4,460.00
Total 2260 Instruction and Curriculum Development Services	\$559,388.52	\$615,468.05		\$1,174,856.57

General Fund (10)

	<u>Elementary</u>	<u>Secondary</u>	<u>Federal</u>	<u>Total</u>
2270 Instructional Staff Professional Development Services				
200 Personnel Services – Employee Benefits				
240 Tuition Reimbursement	95,328.00	40,039.00		135,367.00
Total Personnel Services – Employee Benefits	\$95,328.00	\$40,039.00		\$135,367.00
300 Purchased Professional and Technical Services				
360 Employee Training and Development Services	3,424.35	45,091.72		48,516.07
390 Other Purchased Professional and Technical Services		3,582.95		3,582.95
Total Purchased Professional and Technical Services	\$3,424.35	\$48,674.67		\$52,099.02
500 Other Purchased Services				
580 Travel	236.44			236.44
Total Other Purchased Services	\$236.44			\$236.44
600 Supplies				
610 General Supplies		824.13		824.13
Total Supplies		\$824.13		\$824.13
800 Other Objects				
810 Dues and Fees		1,295.00		1,295.00
Total Other Objects		\$1,295.00		\$1,295.00
Total 2270 Instructional Staff Professional Development Services	\$98,988.79	\$90,832.80		\$189,821.59

General Fund (10)

	<u>Elementary</u>	<u>Secondary</u>	<u>Federal</u>	<u>Total</u>
2280 Nonpublic Support Services				
100 Personnel Services – Salaries				
100 Personnel Services – Salaries	18,359.44	6,322.91		24,682.35
Total Personnel Services – Salaries	\$18,359.44	\$6,322.91		\$24,682.35
200 Personnel Services – Employee Benefits				
220 Social Security Contributions	1,398.89	483.70		1,882.59
230 PSERS Retirement Contributions	6,295.45	2,168.12		8,463.57
250 Unemployment Compensation	2.63	0.48		3.11
260 Workers' Compensation	38.90	19.38		58.28
Total Personnel Services – Employee Benefits	\$7,735.87	\$2,671.68		\$10,407.55
300 Purchased Professional and Technical Services				
329 Professional Educational Services – Other			567.00	567.00
Total Purchased Professional and Technical Services			\$567.00	\$567.00
Total 2280 Nonpublic Support Services	\$26,095.31	\$8,994.59	\$567.00	\$35,656.90

General Fund (10)

	<u>Elementary</u>	<u>Secondary</u>	<u>Federal</u>	<u>Total</u>
2300 Support Services – Administration				
100 Personnel Services – Salaries				
100 Personnel Services – Salaries	1,575,807.12	1,550,539.73		3,647,738.39
Total Personnel Services – Salaries	\$1,575,807.12	\$1,550,539.73		\$3,647,738.39
200 Personnel Services – Employee Benefits				
210 Group Insurance – Contracted Provider	385,393.69	379,688.16		861,450.06
220 Social Security Contributions	116,686.45	119,709.11		269,649.93
230 PSERS Retirement Contributions	529,790.91	542,071.26		1,210,978.49
250 Unemployment Compensation	246.00	215.62		507.79
260 Workers' Compensation	3,080.88	5,365.94		10,334.67
Total Personnel Services – Employee Benefits	\$1,035,197.93	\$1,047,050.09		\$2,352,920.94
300 Purchased Professional and Technical Services				
310 Official / Administrative Services				68,404.52
329 Professional Educational Services – Other				94,651.65
330 Other Professional Services	3,500.00	3,000.00		269,512.36
390 Other Purchased Professional and Technical Services				2,121.83
Total Purchased Professional and Technical Services	\$3,500.00	\$3,000.00		\$434,690.36
400 Purchased Property Services				
430 Repairs and Maintenance Services				4,970.45
440 Rentals				24,140.74
Total Purchased Property Services				\$29,111.19
500 Other Purchased Services				
520 Insurance – General				80,522.25
530 Communications	20,818.51	17,121.80		39,815.24
549 Other Advertising/Public Relations				7,402.58
550 Printing and Binding	851.35	100.00		35,272.58
580 Travel	1,360.60	3,616.89		6,782.23
591 Services Purchased Locally				3,241.12
Total Other Purchased Services	\$23,030.46	\$20,838.69		\$173,036.00
600 Supplies				
610 General Supplies	8,406.38	3,819.39		44,825.25
640 Books and Periodicals	706.29	498.38		1,941.54
Total Supplies	\$9,112.67	\$4,317.77		\$46,766.79
800 Other Objects				
810 Dues and Fees	9,000.00	6,905.00		41,678.39
820 Claims and Judgments Against the LEA				1,225.88
890 Miscellaneous Expenditures				6,516.80
Total Other Objects	\$9,000.00	\$6,905.00		\$49,421.07
Total 2300 Support Services – Administration	\$2,655,648.18	\$2,632,651.28		\$6,733,684.74

General Fund (10)

2310 Board Services

Elementary Secondary Federal Total

300	<u>Purchased Professional and Technical Services</u>			
	330 Other Professional Services			21,161.00
Total Purchased Professional and Technical Services				\$21,161.00
400	<u>Purchased Property Services</u>			
	430 Repairs and Maintenance Services			4,970.45
	440 Rentals			24,140.74
Total Purchased Property Services				\$29,111.19
500	<u>Other Purchased Services</u>			
	520 Insurance – General			80,522.25
	549 Other Advertising/Public Relations			7,402.58
	580 Travel			1,492.53
Total Other Purchased Services				\$89,417.36
600	<u>Supplies</u>			
	610 General Supplies			4,253.98
Total Supplies				\$4,253.98
800	<u>Other Objects</u>			
	810 Dues and Fees			15,010.42
	820 Claims and Judgments Against the LEA			1,225.88
Total Other Objects				\$16,236.30
Total 2310 Board Services				\$160,179.83

General Fund (10)

	<u>Elementary</u>	<u>Secondary</u>	<u>Federal</u>	<u>Total</u>
2330 Tax Assessment and Collection Services				
100 Personnel Services – Salaries				
100 Personnel Services – Salaries				85,339.25
Total Personnel Services – Salaries				\$85,339.25
200 Personnel Services – Employee Benefits				
220 Social Security Contributions				6,528.52
260 Workers’ Compensation				296.65
Total Personnel Services – Employee Benefits				\$6,825.17
300 Purchased Professional and Technical Services				
310 Official / Administrative Services				68,404.52
330 Other Professional Services				182,986.66
390 Other Purchased Professional and Technical Services				2,121.83
Total Purchased Professional and Technical Services				\$253,513.01
500 Other Purchased Services				
530 Communications				399.17
591 Services Purchased Locally				3,241.12
Total Other Purchased Services				\$3,640.29
800 Other Objects				
890 Miscellaneous Expenditures				6,516.80
Total Other Objects				\$6,516.80
Total 2330 Tax Assessment and Collection Services				\$355,834.52

General Fund (10)

2350 Legal and Accounting Services

Elementary

Secondary

Federal

Total

300 Purchased Professional and Technical Services

330 Other Professional Services

52,114.70

Total Purchased Professional and Technical Services

\$52,114.70

Total 2350 Legal and Accounting Services

\$52,114.70

General Fund (10)

	<u>Elementary</u>	<u>Secondary</u>	<u>Federal</u>	<u>Total</u>
2360 Office of the Superintendent / Executive Director Services				
100 Personnel Services – Salaries				
100 Personnel Services – Salaries				286,304.50
Total Personnel Services – Salaries				\$286,304.50
200 Personnel Services – Employee Benefits				
210 Group Insurance – Contracted Provider				57,016.32
220 Social Security Contributions				15,433.71
230 PSERS Retirement Contributions				88,387.39
250 Unemployment Compensation				26.16
260 Workers' Compensation				1,073.28
Total Personnel Services – Employee Benefits				\$161,936.86
300 Purchased Professional and Technical Services				
330 Other Professional Services				5,250.00
Total Purchased Professional and Technical Services				\$5,250.00
500 Other Purchased Services				
530 Communications	11,591.00	11,653.76		23,244.76
550 Printing and Binding				35.00
Total Other Purchased Services	\$11,591.00	\$11,653.76		\$23,279.76
600 Supplies				
610 General Supplies				7,484.01
640 Books and Periodicals				736.87
Total Supplies				\$8,220.88
800 Other Objects				
810 Dues and Fees				4,110.00
Total Other Objects				\$4,110.00
Total 2360 Office of the Superintendent / Executive Director Services	\$11,591.00	\$11,653.76		\$489,102.00

LEA : 104107903 Seneca Valley SD

Printed 12/2/2020 2:23:12 PM

General Fund (10)

	<u>Elementary</u>	<u>Secondary</u>	<u>Federal</u>	<u>Total</u>
2370 Community Relations Services				
100 Personnel Services – Salaries				
100 Personnel Services – Salaries				149,747.79
Total Personnel Services – Salaries				\$149,747.79
200 Personnel Services – Employee Benefits				
210 Group Insurance – Contracted Provider				39,351.89
220 Social Security Contributions				11,292.14
230 PSERS Retirement Contributions				50,728.93
250 Unemployment Compensation				20.01
260 Workers' Compensation				517.92
Total Personnel Services – Employee Benefits				\$101,910.89
300 Purchased Professional and Technical Services				
329 Professional Educational Services – Other				94,651.65
330 Other Professional Services				1,500.00
Total Purchased Professional and Technical Services				\$96,151.65
500 Other Purchased Services				
530 Communications				1,475.76
550 Printing and Binding				34,286.23
580 Travel				312.21
Total Other Purchased Services				\$36,074.20
600 Supplies				
610 General Supplies				20,861.49
Total Supplies				\$20,861.49
800 Other Objects				
810 Dues and Fees				6,652.97
Total Other Objects				\$6,652.97
Total 2370 Community Relations Services				\$411,398.99

General Fund (10)

	<u>Elementary</u>	<u>Secondary</u>	<u>Federal</u>	<u>Total</u>
2380 Office of the Principal Services				
100 Personnel Services – Salaries				
100 Personnel Services – Salaries	1,575,807.12	1,550,539.73		3,126,346.85
Total Personnel Services – Salaries	\$1,575,807.12	\$1,550,539.73		\$3,126,346.85
200 Personnel Services – Employee Benefits				
210 Group Insurance – Contracted Provider	385,393.69	379,688.16		765,081.85
220 Social Security Contributions	116,686.45	119,709.11		236,395.56
230 PSERS Retirement Contributions	529,790.91	542,071.26		1,071,862.17
250 Unemployment Compensation	246.00	215.62		461.62
260 Workers' Compensation	3,080.88	5,365.94		8,446.82
Total Personnel Services – Employee Benefits	\$1,035,197.93	\$1,047,050.09		\$2,082,248.02
300 Purchased Professional and Technical Services				
330 Other Professional Services	3,500.00	3,000.00		6,500.00
Total Purchased Professional and Technical Services	\$3,500.00	\$3,000.00		\$6,500.00
500 Other Purchased Services				
530 Communications	9,227.51	5,468.04		14,695.55
550 Printing and Binding	851.35	100.00		951.35
580 Travel	1,360.60	3,616.89		4,977.49
Total Other Purchased Services	\$11,439.46	\$9,184.93		\$20,624.39
600 Supplies				
610 General Supplies	8,406.38	3,819.39		12,225.77
640 Books and Periodicals	706.29	498.38		1,204.67
Total Supplies	\$9,112.67	\$4,317.77		\$13,430.44
800 Other Objects				
810 Dues and Fees	9,000.00	6,905.00		15,905.00
Total Other Objects	\$9,000.00	\$6,905.00		\$15,905.00
Total 2380 Office of the Principal Services	\$2,644,057.18	\$2,620,997.52		\$5,265,054.70

General Fund (10)

	<u>Elementary</u>	<u>Secondary</u>	<u>Federal</u>	<u>Total</u>
2400 Support Services – Pupil Health				
100 Personnel Services – Salaries				
100 Personnel Services – Salaries				704,927.52
Total Personnel Services – Salaries				\$704,927.52
200 Personnel Services – Employee Benefits				
210 Group Insurance – Contracted Provider				179,746.14
220 Social Security Contributions				53,401.67
230 PSERS Retirement Contributions				236,598.17
250 Unemployment Compensation				124.55
260 Workers' Compensation				1,819.90
Total Personnel Services – Employee Benefits				\$471,690.43
400 Purchased Property Services				
430 Repairs and Maintenance Services				212.00
Total Purchased Property Services				\$212.00
500 Other Purchased Services				
580 Travel				570.85
Total Other Purchased Services				\$570.85
600 Supplies				
610 General Supplies				19,151.13
Total Supplies				\$19,151.13
Total 2400 Support Services – Pupil Health				\$1,196,551.93

General Fund (10)

2420 Medical Services

Elementary

Secondary

Federal

Total

400 Purchased Property Services

430 Repairs and Maintenance Services

212.00

Total Purchased Property Services

\$212.00

600 Supplies

610 General Supplies

19,151.13

Total Supplies

\$19,151.13

Total 2420 Medical Services

\$19,363.13

General Fund (10)

2440 Nursing Services

Elementary

Secondary

Federal

Total

100 Personnel Services – Salaries

100 Personnel Services – Salaries

704,927.52

Total Personnel Services – Salaries

\$704,927.52

200 Personnel Services – Employee Benefits

210 Group Insurance – Contracted Provider

179,746.14

220 Social Security Contributions

53,401.67

230 PSERS Retirement Contributions

236,598.17

250 Unemployment Compensation

124.55

260 Workers' Compensation

1,819.90

Total Personnel Services – Employee Benefits

\$471,690.43

500 Other Purchased Services

580 Travel

570.85

Total Other Purchased Services

\$570.85

Total 2440 Nursing Services

\$1,177,188.80

General Fund (10)

2500 Support Services – Business

Elementary Secondary Federal Total

100 Personnel Services – Salaries

100 Personnel Services – Salaries 399,196.21

Total Personnel Services – Salaries \$399,196.21

200 Personnel Services – Employee Benefits

210 Group Insurance – Contracted Provider 73,237.04

220 Social Security Contributions 28,553.72

230 PSERS Retirement Contributions 131,821.52

250 Unemployment Compensation 55.05

260 Workers' Compensation 1,029.31

Total Personnel Services – Employee Benefits \$234,696.64

300 Purchased Professional and Technical Services

329 Professional Educational Services – Other 5,932.34

330 Other Professional Services 1,000.00

Total Purchased Professional and Technical Services \$6,932.34

500 Other Purchased Services

550 Printing and Binding 64.45

580 Travel 298.03

Total Other Purchased Services \$362.48

600 Supplies

610 General Supplies 1,893.54

Total Supplies \$1,893.54

800 Other Objects

810 Dues and Fees 998.23

890 Miscellaneous Expenditures 171.72

Total Other Objects \$1,169.95

Total 2500 Support Services – Business \$644,251.16

General Fund (10)

2510 Fiscal Services

Elementary

Secondary

Federal

Total

100 Personnel Services – Salaries

100 Personnel Services – Salaries 399,196.21

Total Personnel Services – Salaries \$399,196.21

200 Personnel Services – Employee Benefits

210 Group Insurance – Contracted Provider 73,237.04

220 Social Security Contributions 28,553.72

230 PSERS Retirement Contributions 131,821.52

250 Unemployment Compensation 55.05

260 Workers' Compensation 1,029.31

Total Personnel Services – Employee Benefits \$234,696.64

300 Purchased Professional and Technical Services

329 Professional Educational Services – Other 5,932.34

330 Other Professional Services 1,000.00

Total Purchased Professional and Technical Services \$6,932.34

500 Other Purchased Services

550 Printing and Binding 64.45

580 Travel 298.03

Total Other Purchased Services \$362.48

600 Supplies

610 General Supplies 1,893.54

Total Supplies \$1,893.54

800 Other Objects

810 Dues and Fees 998.23

890 Miscellaneous Expenditures 171.72

Total Other Objects \$1,169.95

Total 2510 Fiscal Services \$644,251.16

General Fund (10)

	<u>Elementary</u>	<u>Secondary</u>	<u>Federal</u>	<u>Total</u>
2511 Supervision of Fiscal Services - Head of Component				
100 <u>Personnel Services – Salaries</u>				
100 Personnel Services – Salaries				179,889.23
Total Personnel Services – Salaries				\$179,889.23
200 <u>Personnel Services – Employee Benefits</u>				
210 Group Insurance – Contracted Provider				33,639.68
220 Social Security Contributions				12,047.01
230 PSERS Retirement Contributions				59,783.02
250 Unemployment Compensation				15.04
260 Workers' Compensation				96.72
Total Personnel Services – Employee Benefits				\$105,581.47
300 <u>Purchased Professional and Technical Services</u>				
329 Professional Educational Services – Other				5,932.34
330 Other Professional Services				1,000.00
Total Purchased Professional and Technical Services				\$6,932.34
500 <u>Other Purchased Services</u>				
550 Printing and Binding				64.45
580 Travel				298.03
Total Other Purchased Services				\$362.48
600 <u>Supplies</u>				
610 General Supplies				1,893.54
Total Supplies				\$1,893.54
800 <u>Other Objects</u>				
810 Dues and Fees				998.23
890 Miscellaneous Expenditures				171.72
Total Other Objects				\$1,169.95
Total 2511 Supervision of Fiscal Services - Head of Component				\$295,829.01

General Fund (10)

2513 Receiving and Disbursing Funds Services

Elementary

Secondary

Federal

Total

100 Personnel Services – Salaries

100 Personnel Services – Salaries

38,210.86

Total Personnel Services – Salaries

\$38,210.86

200 Personnel Services – Employee Benefits

210 Group Insurance – Contracted Provider

18,764.40

220 Social Security Contributions

2,765.61

230 PSERS Retirement Contributions

13,020.26

250 Unemployment Compensation

10.00

260 Workers' Compensation

189.80

Total Personnel Services – Employee Benefits

\$34,750.07

Total 2513 Receiving and Disbursing Funds Services

\$72,960.93

General Fund (10)

2514 Payroll Services

100 Personnel Services – Salaries

	<u>Elementary</u>	<u>Secondary</u>	<u>Federal</u>	<u>Total</u>
100 Personnel Services – Salaries				65,012.27
Total Personnel Services – Salaries				\$65,012.27
200 Personnel Services – Employee Benefits				
210 Group Insurance – Contracted Provider				1,034.28
220 Social Security Contributions				4,959.08
230 PSERS Retirement Contributions				20,863.64
250 Unemployment Compensation				10.00
260 Workers' Compensation				324.11
Total Personnel Services – Employee Benefits				\$27,191.11
Total 2514 Payroll Services				\$92,203.38

General Fund (10)

2515 Financial Accounting Services	<u>Elementary</u>	<u>Secondary</u>	<u>Federal</u>	<u>Total</u>
100 Personnel Services – Salaries				
100 Personnel Services – Salaries				83,944.95
Total Personnel Services – Salaries				\$83,944.95
200 Personnel Services – Employee Benefits				
210 Group Insurance – Contracted Provider				1,034.28
220 Social Security Contributions				6,407.45
230 PSERS Retirement Contributions				27,198.77
250 Unemployment Compensation				10.00
260 Workers' Compensation				418.68
Total Personnel Services – Employee Benefits				\$35,069.18
Total 2515 Financial Accounting Services				\$119,014.13

General Fund (10)

2519 Other Fiscal Services

Elementary

Secondary

Federal

Total

100 Personnel Services – Salaries

100 Personnel Services – Salaries

32,138.90

Total Personnel Services – Salaries

\$32,138.90

200 Personnel Services – Employee Benefits

210 Group Insurance – Contracted Provider

18,764.40

220 Social Security Contributions

2,374.57

230 PSERS Retirement Contributions

10,955.83

250 Unemployment Compensation

10.01

Total Personnel Services – Employee Benefits

\$32,104.81

Total 2519 Other Fiscal Services

\$64,243.71

LEA : 104107903 Seneca Valley SD

Printed 12/2/2020 2:23:12 PM

General Fund (10)

	<u>Elementary</u>	<u>Secondary</u>	<u>Federal</u>	<u>Total</u>
2600 Operation and Maintenance of Plant Services				
100 Personnel Services – Salaries				
100 Personnel Services – Salaries				2,068,185.09
Total Personnel Services – Salaries				\$2,068,185.09
200 Personnel Services – Employee Benefits				
210 Group Insurance – Contracted Provider				442,546.76
220 Social Security Contributions				156,671.35
230 PSERS Retirement Contributions				707,519.82
250 Unemployment Compensation				415.46
260 Workers' Compensation				6,007.85
Total Personnel Services – Employee Benefits				\$1,313,161.24
300 Purchased Professional and Technical Services				
329 Professional Educational Services – Other				372,316.81
330 Other Professional Services				1,875.00
Total Purchased Professional and Technical Services				\$374,191.81
400 Purchased Property Services				
410 Cleaning Services				1,676,407.17
420 Utility Services				806,834.66
430 Repairs and Maintenance Services				417,424.18
440 Rentals				838.42
490 Other Purchased Property Services				7,554.00
Total Purchased Property Services				\$2,909,058.43
500 Other Purchased Services				
521 Fire Insurance				162,405.00
522 Automotive Liability Insurance				8,555.00
523 General Property and Liability Insurance				10,080.00
530 Communications				133,824.91
580 Travel				2,018.99
Total Other Purchased Services				\$316,883.90
600 Supplies				
610 General Supplies	106,424.55	339,266.90	1,562.28	447,253.73
620 Energy				221,381.37
Total Supplies	\$106,424.55	\$339,266.90	\$1,562.28	\$668,635.10
700 Property				
752 Capital Equipment – Original and Additional				29,818.60
762 Capitalized Equipment - Replacement				43,867.75
Total Property				\$73,686.35
800 Other Objects				
810 Dues and Fees				6,240.00
Total Other Objects				\$6,240.00
Total 2600 Operation and Maintenance of Plant Services	\$106,424.55	\$339,266.90	\$1,562.28	\$7,730,041.92

General Fund (10)

	<u>Elementary</u>	<u>Secondary</u>	<u>Federal</u>	<u>Total</u>
2610 Supervision of Operation and Maintenance of Plant Services				
100 Personnel Services – Salaries				
100 Personnel Services – Salaries				231,398.23
Total Personnel Services – Salaries				\$231,398.23
200 Personnel Services – Employee Benefits				
210 Group Insurance – Contracted Provider				52,676.22
220 Social Security Contributions				18,178.61
230 PSERS Retirement Contributions				82,374.76
250 Unemployment Compensation				36.12
260 Workers' Compensation				96.72
Total Personnel Services – Employee Benefits				\$153,362.43
600 Supplies				
610 General Supplies		4.49		4.49
Total Supplies		\$4.49		\$4.49
Total 2610 Supervision of Operation and Maintenance of Plant Services		\$4.49		\$384,765.15

General Fund (10)

2611 Supervision of Operation and Maintenance of Plant Services – Head of Component

Elementary

Secondary

Federal

Total

100 Personnel Services – Salaries

100 Personnel Services – Salaries

124,353.18

Total Personnel Services – Salaries

\$124,353.18

200 Personnel Services – Employee Benefits

210 Group Insurance – Contracted Provider

27,970.54

220 Social Security Contributions

10,217.44

230 PSERS Retirement Contributions

46,065.38

250 Unemployment Compensation

14.96

260 Workers' Compensation

96.72

Total Personnel Services – Employee Benefits

\$84,365.04

600 Supplies

610 General Supplies

4.49

4.49

Total Supplies

\$4.49

\$4.49

Total 2611 Supervision of Operation and Maintenance of Plant Services – Head of Component

\$4.49

\$208,722.71

General Fund (10)

2619 Supervision of Operation and Maintenance of Plant Services – All Other Supervision

Elementary

Secondary

Federal

Total

100 Personnel Services – Salaries

100 Personnel Services – Salaries

107,045.05

Total Personnel Services – Salaries

\$107,045.05

200 Personnel Services – Employee Benefits

210 Group Insurance – Contracted Provider

24,705.68

220 Social Security Contributions

7,961.17

230 PSERS Retirement Contributions

36,309.38

250 Unemployment Compensation

21.16

Total Personnel Services – Employee Benefits

\$68,997.39

Total 2619 Supervision of Operation and Maintenance of Plant Services – All Other Supervision

\$176,042.44

General Fund (10)

	<u>Elementary</u>	<u>Secondary</u>	<u>Federal</u>	<u>Total</u>
2620 Operation of Buildings Services				
100 Personnel Services – Salaries				
100 Personnel Services – Salaries				1,731,739.22
Total Personnel Services – Salaries				\$1,731,739.22
200 Personnel Services – Employee Benefits				
210 Group Insurance – Contracted Provider				389,452.19
220 Social Security Contributions				130,209.14
230 PSERS Retirement Contributions				589,732.65
250 Unemployment Compensation				369.34
260 Workers' Compensation				5,911.13
Total Personnel Services – Employee Benefits				\$1,115,674.45
300 Purchased Professional and Technical Services				
329 Professional Educational Services – Other				3,615.00
330 Other Professional Services				1,875.00
Total Purchased Professional and Technical Services				\$5,490.00
400 Purchased Property Services				
410 Cleaning Services				1,676,407.17
420 Utility Services				806,834.66
430 Repairs and Maintenance Services				417,424.18
440 Rentals				838.42
490 Other Purchased Property Services				7,554.00
Total Purchased Property Services				\$2,909,058.43
500 Other Purchased Services				
521 Fire Insurance				162,405.00
522 Automotive Liability Insurance				8,555.00
523 General Property and Liability Insurance				10,080.00
530 Communications				133,824.91
580 Travel				446.73
Total Other Purchased Services				\$315,311.64
600 Supplies				
610 General Supplies	106,424.55	292,196.14		398,620.69
620 Energy				213,538.96
Total Supplies	\$106,424.55	\$292,196.14		\$612,159.65
700 Property				
762 Capitalized Equipment - Replacement				43,867.75
Total Property				\$43,867.75
800 Other Objects				
810 Dues and Fees				6,240.00
Total Other Objects				\$6,240.00
Total 2620 Operation of Buildings Services	\$106,424.55	\$292,196.14		\$6,739,541.14

General Fund (10)

2650 Vehicle Operation and Maintenance Services (Other Than Student Transportation Vehicles)

Elementary

Secondary

Federal

Total

600 Supplies

620 Energy

7,842.41

Total Supplies

\$7,842.41

Total 2650 Vehicle Operation and Maintenance Services (Other Than Student Transportation Vehicles)

\$7,842.41

General Fund (10)

	<u>Elementary</u>	<u>Secondary</u>	<u>Federal</u>	<u>Total</u>
2660 Safety and Security Services				
100 Personnel Services – Salaries				
100 Personnel Services – Salaries				105,047.64
Total Personnel Services – Salaries				\$105,047.64
200 Personnel Services – Employee Benefits				
210 Group Insurance – Contracted Provider				418.35
220 Social Security Contributions				8,283.60
230 PSERS Retirement Contributions				35,412.41
250 Unemployment Compensation				10.00
Total Personnel Services – Employee Benefits				\$44,124.36
300 Purchased Professional and Technical Services				
329 Professional Educational Services – Other				368,701.81
Total Purchased Professional and Technical Services				\$368,701.81
500 Other Purchased Services				
580 Travel				1,572.26
Total Other Purchased Services				\$1,572.26
600 Supplies				
610 General Supplies		47,066.27	1,562.28	48,628.55
Total Supplies		\$47,066.27	\$1,562.28	\$48,628.55
700 Property				
752 Capital Equipment – Original and Additional				29,818.60
Total Property				\$29,818.60
Total 2660 Safety and Security Services		\$47,066.27	\$1,562.28	\$597,893.22

General Fund (10)

	<u>Elementary</u>	<u>Secondary</u>	<u>Federal</u>	<u>Total</u>
2700 Student Transportation Services				
100 Personnel Services – Salaries				
100 Personnel Services – Salaries				175,630.81
Total Personnel Services – Salaries				\$175,630.81
200 Personnel Services – Employee Benefits				
210 Group Insurance – Contracted Provider				61,919.49
220 Social Security Contributions				12,976.27
230 PSERS Retirement Contributions				60,041.46
250 Unemployment Compensation				30.01
260 Workers' Compensation				222.04
Total Personnel Services – Employee Benefits				\$135,189.27
300 Purchased Professional and Technical Services				
329 Professional Educational Services – Other				7,400.00
Total Purchased Professional and Technical Services				\$7,400.00
500 Other Purchased Services				
513 Contracted Carriers				6,075,445.24
516 Student Transportation Services From the IU				838.08
530 Communications				435.94
580 Travel				1,021.32
Total Other Purchased Services				\$6,077,740.58
600 Supplies				
610 General Supplies				8,084.27
Total Supplies				\$8,084.27
800 Other Objects				
810 Dues and Fees				405.00
Total Other Objects				\$405.00
Total 2700 Student Transportation Services				\$6,404,449.93

General Fund (10)

	<u>Elementary</u>	<u>Secondary</u>	<u>Federal</u>	<u>Total</u>
2710 Supervision of Student Transportation Services				
100 <u>Personnel Services – Salaries</u>				
100 Personnel Services – Salaries				175,630.81
Total Personnel Services – Salaries				\$175,630.81
200 <u>Personnel Services – Employee Benefits</u>				
210 Group Insurance – Contracted Provider				61,919.49
220 Social Security Contributions				12,976.27
230 PSERS Retirement Contributions				60,041.46
250 Unemployment Compensation				30.01
260 Workers' Compensation				222.04
Total Personnel Services – Employee Benefits				\$135,189.27
300 <u>Purchased Professional and Technical Services</u>				
329 Professional Educational Services – Other				7,400.00
Total Purchased Professional and Technical Services				\$7,400.00
600 <u>Supplies</u>				
610 General Supplies				252.91
Total Supplies				\$252.91
800 <u>Other Objects</u>				
810 Dues and Fees				405.00
Total Other Objects				\$405.00
Total 2710 Supervision of Student Transportation Services				\$318,877.99

General Fund (10)

2711 Supervision of Student Transportation Services – Head of Component

Elementary

Secondary

Federal

Total

100 Personnel Services – Salaries

100 Personnel Services – Salaries

103,237.90

Total Personnel Services – Salaries

\$103,237.90

200 Personnel Services – Employee Benefits

210 Group Insurance – Contracted Provider

35,154.84

220 Social Security Contributions

7,540.98

230 PSERS Retirement Contributions

35,254.33

250 Unemployment Compensation

9.99

Total Personnel Services – Employee Benefits

\$77,960.14

300 Purchased Professional and Technical Services

329 Professional Educational Services – Other

7,400.00

Total Purchased Professional and Technical Services

\$7,400.00

600 Supplies

610 General Supplies

252.91

Total Supplies

\$252.91

800 Other Objects

810 Dues and Fees

405.00

Total Other Objects

\$405.00

Total 2711 Supervision of Student Transportation Services – Head of Component

\$189,255.95

General Fund (10)

2719 Supervision of Student Transportation Services – All Other Supervision

Elementary

Secondary

Federal

Total

100 Personnel Services – Salaries

100 Personnel Services – Salaries

72,392.91

Total Personnel Services – Salaries

\$72,392.91

200 Personnel Services – Employee Benefits

210 Group Insurance – Contracted Provider

26,764.65

220 Social Security Contributions

5,435.29

230 PSERS Retirement Contributions

24,787.13

250 Unemployment Compensation

20.02

260 Workers' Compensation

222.04

Total Personnel Services – Employee Benefits

\$57,229.13

Total 2719 Supervision of Student Transportation Services – All Other Supervision

\$129,622.04

General Fund (10)

2720 Vehicle Operation Services

Elementary

Secondary

Federal

Total

500 Other Purchased Services

513 Contracted Carriers

5,175,130.43

516 Student Transportation Services From the IU

838.08

530 Communications

435.94

580 Travel

1,021.32

Total Other Purchased Services

\$5,177,425.77

600 Supplies

610 General Supplies

7,831.36

Total Supplies

\$7,831.36

Total 2720 Vehicle Operation Services

\$5,185,257.13

General Fund (10)

	<u>Elementary</u>	<u>Secondary</u>	<u>Federal</u>	<u>Total</u>
2750 Nonpublic Transportation				
500 <u>Other Purchased Services</u>				
513 Contracted Carriers				900,314.81
Total Other Purchased Services				\$900,314.81
Total 2750 Nonpublic Transportation				\$900,314.81

General Fund (10)

2800 Support Services – Central

Elementary Secondary Federal Total

100	<u>Personnel Services – Salaries</u>				
	100 Personnel Services – Salaries				448,653.09
Total Personnel Services – Salaries					\$448,653.09
200	<u>Personnel Services – Employee Benefits</u>				
	210 Group Insurance – Contracted Provider				122,283.19
	220 Social Security Contributions				32,367.06
	230 PSERS Retirement Contributions				151,886.48
	240 Tuition Reimbursement				51,768.00
	250 Unemployment Compensation				77.10
	260 Workers' Compensation				1,529.66
Total Personnel Services – Employee Benefits					\$359,911.49
300	<u>Purchased Professional and Technical Services</u>				
	329 Professional Educational Services – Other				24,847.50
	330 Other Professional Services				1,000.00
	360 Employee Training and Development Services				17,656.07
Total Purchased Professional and Technical Services					\$43,503.57
500	<u>Other Purchased Services</u>				
	580 Travel				874.88
Total Other Purchased Services					\$874.88
600	<u>Supplies</u>				
	610 General Supplies				1,763.54
	640 Books and Periodicals				760.32
Total Supplies					\$2,523.86
800	<u>Other Objects</u>				
	810 Dues and Fees				2,810.00
Total Other Objects					\$2,810.00
Total 2800 Support Services – Central					\$858,276.89

General Fund (10)

2810 Planning, Research, Development and Evaluation Services

Elementary

Secondary

Federal

Total

100 Personnel Services – Salaries

100 Personnel Services – Salaries

123,149.31

Total Personnel Services – Salaries

\$123,149.31

200 Personnel Services – Employee Benefits

210 Group Insurance – Contracted Provider

19,395.72

220 Social Security Contributions

9,034.55

230 PSERS Retirement Contributions

42,138.38

250 Unemployment Compensation

10.01

260 Workers' Compensation

614.38

Total Personnel Services – Employee Benefits

\$71,193.04

Total 2810 Planning, Research, Development and Evaluation Services

\$194,342.35

General Fund (10)

2830 Staff Services

Elementary Secondary Federal Total

100 Personnel Services – Salaries				
100 Personnel Services – Salaries				279,462.74
Total Personnel Services – Salaries				\$279,462.74
200 Personnel Services – Employee Benefits				
210 Group Insurance – Contracted Provider				89,180.21
220 Social Security Contributions				19,863.98
230 PSERS Retirement Contributions				93,960.60
240 Tuition Reimbursement				51,768.00
250 Unemployment Compensation				60.66
260 Workers' Compensation				915.28
Total Personnel Services – Employee Benefits				\$255,748.73
300 Purchased Professional and Technical Services				
329 Professional Educational Services – Other				24,847.50
330 Other Professional Services				1,000.00
360 Employee Training and Development Services				17,656.07
Total Purchased Professional and Technical Services				\$43,503.57
500 Other Purchased Services				
580 Travel				617.12
Total Other Purchased Services				\$617.12
600 Supplies				
610 General Supplies				1,763.54
640 Books and Periodicals				760.32
Total Supplies				\$2,523.86
800 Other Objects				
810 Dues and Fees				2,810.00
Total Other Objects				\$2,810.00
Total 2830 Staff Services				\$584,666.02

General Fund (10)

2831 Supervision of Staff Services

Elementary Secondary Federal Total

100 Personnel Services – Salaries

100 Personnel Services – Salaries 279,462.74

Total Personnel Services – Salaries \$279,462.74

200 Personnel Services – Employee Benefits

210 Group Insurance – Contracted Provider 89,180.21

220 Social Security Contributions 19,863.98

230 PSERS Retirement Contributions 93,960.60

250 Unemployment Compensation 60.66

260 Workers' Compensation 915.28

Total Personnel Services – Employee Benefits \$203,980.73

300 Purchased Professional and Technical Services

329 Professional Educational Services – Other 24,847.50

330 Other Professional Services 1,000.00

Total Purchased Professional and Technical Services \$25,847.50

500 Other Purchased Services

580 Travel 617.12

Total Other Purchased Services \$617.12

600 Supplies

610 General Supplies 1,763.54

640 Books and Periodicals 760.32

Total Supplies \$2,523.86

800 Other Objects

810 Dues and Fees 310.00

Total Other Objects \$310.00

Total 2831 Supervision of Staff Services \$512,741.95

General Fund (10)

2834 Staff Development Services – Non-Instructional, Certified Staff Only

Elementary

Secondary

Federal

Total

200 Personnel Services – Employee Benefits

240 Tuition Reimbursement

51,768.00

Total Personnel Services – Employee Benefits

\$51,768.00

Total 2834 Staff Development Services – Non-Instructional, Certified Staff Only

\$51,768.00

General Fund (10)

2836 Staff Development Services – Non-Instructional, Non-Certified Staff Only

Elementary

Secondary

Federal

Total

300 Purchased Professional and Technical Services

360 Employee Training and Development Services

17,656.07

Total Purchased Professional and Technical Services

\$17,656.07

Total 2836 Staff Development Services – Non-Instructional, Non-Certified Staff Only

\$17,656.07

LEA : 104107903 Seneca Valley SD

Printed 12/2/2020 2:23:12 PM

General Fund (10)

2839 Other Staff Services

Elementary

Secondary

Federal

Total

800 Other Objects

810 Dues and Fees

2,500.00

Total Other Objects

\$2,500.00

Total 2839 Other Staff Services

\$2,500.00

General Fund (10)

2850 State and Federal Agency Liaison Services

Elementary

Secondary

Federal

Total

100 Personnel Services – Salaries

100 Personnel Services – Salaries

46,041.04

Total Personnel Services – Salaries

\$46,041.04

200 Personnel Services – Employee Benefits

210 Group Insurance – Contracted Provider

13,707.26

220 Social Security Contributions

3,468.53

230 PSERS Retirement Contributions

15,787.50

250 Unemployment Compensation

6.43

Total Personnel Services – Employee Benefits

\$32,969.72

500 Other Purchased Services

580 Travel

257.76

Total Other Purchased Services

\$257.76

Total 2850 State and Federal Agency Liaison Services

\$79,268.52

General Fund (10)

2900 Other Support Services

Elementary

Secondary

Federal

Total

100 Personnel Services – Salaries

100 Personnel Services – Salaries 455,776.80

Total Personnel Services – Salaries \$455,776.80

200 Personnel Services – Employee Benefits

210 Group Insurance – Contracted Provider 126,312.34

220 Social Security Contributions 33,915.55

230 PSERS Retirement Contributions 155,480.75

250 Unemployment Compensation 59.99

260 Workers' Compensation 945.36

Total Personnel Services – Employee Benefits \$316,713.99

300 Purchased Professional and Technical Services

340 Technical Services 86,353.01

Total Purchased Professional and Technical Services \$86,353.01

400 Purchased Property Services

430 Repairs and Maintenance Services 9,998.07

Total Purchased Property Services \$9,998.07

500 Other Purchased Services

580 Travel 1,776.30

595 IU Payments By Withholding 143,338.45

Total Other Purchased Services \$145,114.75

600 Supplies

610 General Supplies 13,549.43

650 Supplies & Fees – Technology Related 1,449,584.65

Total Supplies \$1,463,134.08

700 Property

756 Capitalized Technology Equipment – Original 533,333.75

Total Property \$533,333.75

Total 2900 Other Support Services \$3,010,424.45

General Fund (10)

2910 Support Services Not Listed Elsewhere In the 2000 Series

Elementary Secondary Federal Total

100 Personnel Services – Salaries				
100 Personnel Services – Salaries				455,776.80
Total Personnel Services – Salaries				\$455,776.80
200 Personnel Services – Employee Benefits				
210 Group Insurance – Contracted Provider				126,312.34
220 Social Security Contributions				33,915.55
230 PSERS Retirement Contributions				155,480.75
250 Unemployment Compensation				59.99
260 Workers' Compensation				945.36
Total Personnel Services – Employee Benefits				\$316,713.99
300 Purchased Professional and Technical Services				
340 Technical Services				86,353.01
Total Purchased Professional and Technical Services				\$86,353.01
400 Purchased Property Services				
430 Repairs and Maintenance Services				9,998.07
Total Purchased Property Services				\$9,998.07
500 Other Purchased Services				
580 Travel				1,776.30
595 IU Payments By Withholding				143,338.45
Total Other Purchased Services				\$145,114.75
600 Supplies				
610 General Supplies				13,549.43
650 Supplies & Fees – Technology Related				1,449,584.65
Total Supplies				\$1,463,134.08
700 Property				
756 Capitalized Technology Equipment – Original				533,333.75
Total Property				\$533,333.75
Total 2910 Support Services Not Listed Elsewhere In the 2000 Series				\$3,010,424.45

General Fund (10)

	<u>Total</u>
3000 Operation of Non-Instructional Services	
100 Personnel Services – Salaries	
100 Personnel Services – Salaries	1,098,017.15
Total Personnel Services – Salaries	\$1,098,017.15
200 Personnel Services – Employee Benefits	
210 Group Insurance – Contracted Provider	33,682.25
220 Social Security Contributions	84,759.95
230 PSERS Retirement Contributions	358,477.67
250 Unemployment Compensation	368.08
260 Workers' Compensation	1,152.80
Total Personnel Services – Employee Benefits	\$478,440.75
300 Purchased Professional and Technical Services	
323 Professional Educational Services – Other Educational Agencies	5,700.00
330 Other Professional Services	72,815.16
390 Other Purchased Professional and Technical Services	1,440.00
Total Purchased Professional and Technical Services	\$79,955.16
400 Purchased Property Services	
410 Cleaning Services	4,950.91
430 Repairs and Maintenance Services	15,123.09
440 Rentals	9,629.42
Total Purchased Property Services	\$29,703.42
500 Other Purchased Services	
510 Student Transportation Services	124,692.95
530 Communications	542.11
550 Printing and Binding	1,231.00
580 Travel	2,566.52
591 Services Purchased Locally	2,738.03
Total Other Purchased Services	\$131,770.61
600 Supplies	
610 General Supplies	113,325.43
650 Supplies & Fees – Technology Related	5,800.00
Total Supplies	\$119,125.43
700 Property	
762 Capitalized Equipment - Replacement	6,474.55
Total Property	\$6,474.55
800 Other Objects	
810 Dues and Fees	1,945.00
890 Miscellaneous Expenditures	173,645.84
Total Other Objects	\$175,590.84
Total 3000 Operation of Non-Instructional Services	\$2,119,077.91

LEA : 104107903 Seneca Valley SD

Printed 12/2/2020 2:23:19 PM

General Fund (10)

3200 Student Activities

Elementary Secondary Federal Total

100	<u>Personnel Services – Salaries</u>			
	100 Personnel Services – Salaries			1,098,017.15
Total Personnel Services – Salaries				\$1,098,017.15
200	<u>Personnel Services – Employee Benefits</u>			
	210 Group Insurance – Contracted Provider			33,682.25
	220 Social Security Contributions			84,759.95
	230 PSERS Retirement Contributions			358,477.67
	250 Unemployment Compensation			368.08
	260 Workers' Compensation			1,152.80
Total Personnel Services – Employee Benefits				\$478,440.75
300	<u>Purchased Professional and Technical Services</u>			
	323 Professional Educational Services – Other Educational Agencies			5,700.00
	330 Other Professional Services			72,815.16
	390 Other Purchased Professional and Technical Services			1,440.00
Total Purchased Professional and Technical Services				\$79,955.16
400	<u>Purchased Property Services</u>			
	410 Cleaning Services			4,950.91
	430 Repairs and Maintenance Services			15,123.09
	440 Rentals			9,629.42
Total Purchased Property Services				\$29,703.42
500	<u>Other Purchased Services</u>			
	510 Student Transportation Services			124,692.95
	530 Communications			542.11
	550 Printing and Binding			1,231.00
	580 Travel			2,566.52
Total Other Purchased Services				\$129,032.58
600	<u>Supplies</u>			
	610 General Supplies		818.06	113,325.43
	650 Supplies & Fees – Technology Related			5,800.00
Total Supplies				\$818.06 \$119,125.43
700	<u>Property</u>			
	762 Capitalized Equipment - Replacement			6,474.55
Total Property				\$6,474.55
800	<u>Other Objects</u>			
	810 Dues and Fees			1,945.00
	890 Miscellaneous Expenditures			173,645.84
Total Other Objects				\$175,590.84
Total 3200 Student Activities			\$818.06	\$2,116,339.88

General Fund (10)

3300 Community Services

Elementary

Secondary

Federal

Total

500 Other Purchased Services

591 Services Purchased Locally

2,738.03

Total Other Purchased Services

\$2,738.03

Total 3300 Community Services

\$2,738.03

General Fund (10)

4000 Facilities Acquisition, Construction and Improvement Services

Total

400 Purchased Property Services

430 Repairs and Maintenance Services

23,131.72

Total Purchased Property Services

\$23,131.72

Total 4000 Facilities Acquisition, Construction and Improvement Services

\$23,131.72

LEA : 104107903 Seneca Valley SD

Printed 12/2/2020 2:23:24 PM

General Fund (10)

	<u>Elementary</u>	<u>Secondary</u>	<u>Federal</u>	<u>Total</u>
4600 Existing Building Improvement Services				
400 <u>Purchased Property Services</u>				
430 Repairs and Maintenance Services				23,131.72
Total Purchased Property Services				\$23,131.72
Total 4600 Existing Building Improvement Services				\$23,131.72

General Fund (10)

5000 Other Expenditures and Financing Uses

Total

800 Other Objects

830 Interest 3,428,516.69

Total Other Objects \$3,428,516.69

900 Other Uses of Funds

910 Redemption of Principal 6,210,000.00

939 Other Fund Transfers 4,352,533.75

Total Other Uses of Funds \$10,562,533.75

Total 5000 Other Expenditures and Financing Uses \$13,991,050.44

General Fund (10)

5100 Debt Service / Other Expenditures and Financing Uses	<u>Elementary</u>	<u>Secondary</u>	<u>Federal</u>	<u>Total</u>
800 <u>Other Objects</u>				
830 Interest				3,428,516.69
Total Other Objects				\$3,428,516.69
900 <u>Other Uses of Funds</u>				
910 Redemption of Principal				6,210,000.00
Total Other Uses of Funds				\$6,210,000.00
Total 5100 Debt Service / Other Expenditures and Financing Uses				\$9,638,516.69

General Fund (10)

	<u>Elementary</u>	<u>Secondary</u>	<u>Federal</u>	<u>Total</u>
5110 Debt Service				
800 Other Objects				
830 Interest				3,428,516.69
Total Other Objects				\$3,428,516.69
900 Other Uses of Funds				
910 Redemption of Principal				6,210,000.00
Total Other Uses of Funds				\$6,210,000.00
Total 5110 Debt Service				\$9,638,516.69

General Fund (10)

5200 Interfund Transfers – Out

Elementary

Secondary

Federal

Total

900 Other Uses of Funds

939 Other Fund Transfers

4,352,533.75

Total Other Uses of Funds

\$4,352,533.75

Total 5200 Interfund Transfers – Out

\$4,352,533.75

General Fund (10)

5230 Capital Projects Fund Transfers

Elementary

Secondary

Federal

Total

900 Other Uses of Funds

939 Other Fund Transfers

4,000,000.00

Total Other Uses of Funds

\$4,000,000.00

Total 5230 Capital Projects Fund Transfers

\$4,000,000.00

General Fund (10)

5240 Debt Service Fund Transfers

Elementary

Secondary

Federal

Total

900 Other Uses of Funds

939 Other Fund Transfers

352,533.75

Total Other Uses of Funds

\$352,533.75

Total 5240 Debt Service Fund Transfers

\$352,533.75

Other Capital Projects Fund (39)

4000 Facilities Acquisition, Construction and Improvement Services

Total

300 Purchased Professional and Technical Services

330 Other Professional Services	1,669,736.02
390 Other Purchased Professional and Technical Services	350,664.40

Total Purchased Professional and Technical Services	\$2,020,400.42
--	-----------------------

400 Purchased Property Services

450 Construction Services	8,158,785.88
490 Other Purchased Property Services	312,646.97

Total Purchased Property Services	\$8,471,432.85
--	-----------------------

500 Other Purchased Services

520 Insurance – General	274,938.00
549 Other Advertising/Public Relations	1,154.00

Total Other Purchased Services	\$276,092.00
---------------------------------------	---------------------

Total 4000 Facilities Acquisition, Construction and Improvement Services	\$10,767,925.27
---	------------------------

Other Capital Projects Fund (39)

4300 Architecture and Engineering Services / Educational Specifications Development – Original and Additional

Elementary

Secondary

Federal

Total

300 Purchased Professional and Technical Services

330 Other Professional Services

1,651,574.29

Total Purchased Professional and Technical Services

\$1,651,574.29

Total 4300 Architecture and Engineering Services / Educational Specifications Development – Original and Additional

\$1,651,574.29

Other Capital Projects Fund (39)

4400 Architecture and Engineering Services / Educational Specifications – Improvements

Elementary

Secondary

Federal

Total

300 Purchased Professional and Technical Services

330 Other Professional Services

18,161.73

Total Purchased Professional and Technical Services

\$18,161.73

Total 4400 Architecture and Engineering Services / Educational Specifications – Improvements

\$18,161.73

Other Capital Projects Fund (39)

	<u>Elementary</u>	<u>Secondary</u>	<u>Federal</u>	<u>Total</u>
4500 Building Acquisition and Construction Services – Original and Additional				
300 <u>Purchased Professional and Technical Services</u>				
390 Other Purchased Professional and Technical Services				344,864.40
Total Purchased Professional and Technical Services				\$344,864.40
400 <u>Purchased Property Services</u>				
450 Construction Services				7,806,085.88
490 Other Purchased Property Services				312,646.97
Total Purchased Property Services				\$8,118,732.85
500 <u>Other Purchased Services</u>				
520 Insurance – General				274,938.00
549 Other Advertising/Public Relations				1,154.00
Total Other Purchased Services				\$276,092.00
Total 4500 Building Acquisition and Construction Services – Original and Additional				\$8,739,689.25

Other Capital Projects Fund (39)

	<u>Elementary</u>	<u>Secondary</u>	<u>Federal</u>	<u>Total</u>
4600 Existing Building Improvement Services				
300 <u>Purchased Professional and Technical Services</u>				
390 Other Purchased Professional and Technical Services				5,800.00
Total Purchased Professional and Technical Services				\$5,800.00
400 <u>Purchased Property Services</u>				
450 Construction Services				352,700.00
Total Purchased Property Services				\$352,700.00
Total 4600 Existing Building Improvement Services				\$358,500.00

LEA : 104107903 Seneca Valley SD

Printed 12/2/2020 2:23:16 PM

Debt Service Fund (40)

2000 Support Services

800 Other Objects

810 Dues and Fees

Total

90,599.00

Total Other Objects

\$90,599.00

Total 2000 Support Services

\$90,599.00

LEA : 104107903 Seneca Valley SD

Printed 12/2/2020 2:23:16 PM

Debt Service Fund (40)

2300 Support Services – Administration

Elementary

Secondary

Federal

Total

800 Other Objects

810 Dues and Fees

90,599.00

Total Other Objects

\$90,599.00

Total 2300 Support Services – Administration

\$90,599.00

LEA : 104107903 Seneca Valley SD

Printed 12/2/2020 2:23:16 PM

Debt Service Fund (40)

2390 Other Administration Services

Elementary

Secondary

Federal

Total

800 Other Objects

810 Dues and Fees

90,599.00

Total Other Objects

\$90,599.00

Total 2390 Other Administration Services

\$90,599.00

Debt Service Fund (40)

5000 Other Expenditures and Financing Uses

Total

800 Other Objects

830 Interest 296,986.00

Total Other Objects \$296,986.00

900 Other Uses of Funds

910 Redemption of Principal 16,140,000.00

Total Other Uses of Funds \$16,140,000.00

Total 5000 Other Expenditures and Financing Uses \$16,436,986.00

Debt Service Fund (40)

5100 Debt Service / Other Expenditures and Financing Uses

Elementary

Secondary

Federal

Total

800 Other Objects

830 Interest

296,986.00

Total Other Objects

\$296,986.00

900 Other Uses of Funds

910 Redemption of Principal

16,140,000.00

Total Other Uses of Funds

\$16,140,000.00

Total 5100 Debt Service / Other Expenditures and Financing Uses

\$16,436,986.00

Debt Service Fund (40)

5120 Debt Service – Refunded Bonds	<u>Elementary</u>	<u>Secondary</u>	<u>Federal</u>	<u>Total</u>
800 <u>Other Objects</u>				
830 Interest				296,986.00
Total Other Objects				\$296,986.00
900 <u>Other Uses of Funds</u>				
910 Redemption of Principal				16,140,000.00
Total Other Uses of Funds				\$16,140,000.00
Total 5120 Debt Service – Refunded Bonds				\$16,436,986.00

	<u>General Fund(10)</u>	<u>Student Sponsored Activity Fund(21)</u>	<u>Public Purpose Trust(27)</u>	<u>Other Compt Approved (28)</u>	<u>Athletic / Activity(29)</u>
1000 Instruction					
1100 Regular Programs - Elementary / Secondary	57,115,001.80				
1200 Special Programs - Elementary / Secondary	21,467,571.28				
1300 Vocational Education	3,821,817.46				
1400 Other Instructional Programs - Elementary / Secondary	262,194.96				
1500 Nonpublic School Programs	25,360.00				
Total Instruction	\$82,691,945.50				
2000 Support Services					
2100 Support Services - Students	3,982,117.30				
2200 Support Services - Instructional Staff	2,579,651.05				
2300 Support Services - Administration	6,733,684.74				
2400 Support Services - Pupil Health	1,196,551.93				
2500 Support Services - Business	644,251.16				
2600 Operation and Maintenance of Plant Services	7,730,041.92				
2700 Student Transportation Services	6,404,449.93				
2800 Support Services - Central	858,276.89				
2900 Other Support Services	3,010,424.45				
Total Support Services	\$33,139,449.37				
3000 Operation of Non-Instructional Services					
3200 Student Activities	2,116,339.88				
3300 Community Services	2,738.03				
Total Operation of Non-Instructional Services	\$2,119,077.91				
4000 Facilities Acquisition, Construction and Improvement Services					
4300 Architecture and Engineering Services / Educational Specifications Development - Original and Additional					
4400 Architecture and Engineering Services / Educational Specifications - Improvements					
4500 Building Acquisition and Construction Services - Original and Additional					
4600 Existing Building Improvement Services	23,131.72				
Total Facilities Acquisition, Construction and Improvement Services	\$23,131.72				
5000 Other Expenditures and Financing Uses					
5100 Debt Service / Other Expenditures and Financing Uses	9,638,516.69				
5200 Interfund Transfers - Out	4,352,533.75				
Total Other Expenditures and Financing Uses	\$13,991,050.44				
TOTAL ACTUAL EXPENDITURES & OTHER FINANCING USES	\$131,964,654.94				

	<u>Capital Reserve (690.1850)(31)</u>	<u>Capital Reserve (1431)(32)</u>	<u>Other Capital Projects Fund(39)</u>	<u>Debt Service(40)</u>	<u>Permanent(90)</u>
1000 Instruction					
1100 Regular Programs - Elementary / Secondary					
1200 Special Programs - Elementary / Secondary					
1300 Vocational Education					
1400 Other Instructional Programs - Elementary / Secondary					
1500 Nonpublic School Programs					
Total Instruction					
2000 Support Services					
2100 Support Services - Students					
2200 Support Services - Instructional Staff					
2300 Support Services - Administration				90,599.00	
2400 Support Services - Pupil Health					
2500 Support Services - Business					
2600 Operation and Maintenance of Plant Services					
2700 Student Transportation Services					
2800 Support Services - Central					
2900 Other Support Services					
Total Support Services				\$90,599.00	
3000 Operation of Non-Instructional Services					
3200 Student Activities					
3300 Community Services					
Total Operation of Non-Instructional Services					
4000 Facilities Acquisition, Construction and Improvement Services					
4300 Architecture and Engineering Services / Educational Specifications Development - Original and Additional			1,651,574.29		
4400 Architecture and Engineering Services / Educational Specifications - Improvements			18,161.73		
4500 Building Acquisition and Construction Services - Original and Additional			8,739,689.25		
4600 Existing Building Improvement Services			358,500.00		
Total Facilities Acquisition, Construction and Improvement Services			\$10,767,925.27		
5000 Other Expenditures and Financing Uses					
5100 Debt Service / Other Expenditures and Financing Uses				16,436,986.00	
5200 Interfund Transfers - Out					
Total Other Expenditures and Financing Uses				\$16,436,986.00	
TOTAL ACTUAL EXPENDITURES & OTHER FINANCING USES			\$10,767,925.27	\$16,527,585.00	

Total

1000 Instruction	
1100 Regular Programs - Elementary / Secondary	57,115,001.80
1200 Special Programs - Elementary / Secondary	21,467,571.28
1300 Vocational Education	3,821,817.46
1400 Other Instructional Programs - Elementary / Secondary	262,194.96
1500 Nonpublic School Programs	25,360.00
Total Instruction	\$82,691,945.50
2000 Support Services	
2100 Support Services - Students	3,982,117.30
2200 Support Services - Instructional Staff	2,579,651.05
2300 Support Services - Administration	6,824,283.74
2400 Support Services - Pupil Health	1,196,551.93
2500 Support Services - Business	644,251.16
2600 Operation and Maintenance of Plant Services	7,730,041.92
2700 Student Transportation Services	6,404,449.93
2800 Support Services - Central	858,276.89
2900 Other Support Services	3,010,424.45
Total Support Services	\$33,230,048.37
3000 Operation of Non-Instructional Services	
3200 Student Activities	2,116,339.88
3300 Community Services	2,738.03
Total Operation of Non-Instructional Services	\$2,119,077.91
4000 Facilities Acquisition, Construction and Improvement Services	
4300 Architecture and Engineering Services / Educational Specifications Development - Original and Additional	1,651,574.29
4400 Architecture and Engineering Services / Educational Specifications - Improvements	18,161.73
4500 Building Acquisition and Construction Services - Original and Additional	8,739,689.25
4600 Existing Building Improvement Services	381,631.72
Total Facilities Acquisition, Construction and Improvement Services	\$10,791,056.99
5000 Other Expenditures and Financing Uses	
5100 Debt Service / Other Expenditures and Financing Uses	26,075,502.69
5200 Interfund Transfers - Out	4,352,533.75
Total Other Expenditures and Financing Uses	\$30,428,036.44
TOTAL ACTUAL EXPENDITURES & OTHER FINANCING USES	\$159,260,165.21

PSERS Salary Data (Salary Data should relate to the General Fund only)

Amount Description	Amount
Total Salary Base for salaries subject to PSERS withholding	57,521,260.11
Total Federally Funded salaries subject to PSERS withholding	974,508.44
	<hr/>

Title I Expenditure Data

Amount Description	Amount
Expenditures Funded with Current Title I Funds	375,830.00
Expenditures Funded with Carry over Title I Funds	33,032.00
	<hr/>
Total Title I Expenditure Data	\$408,862.00
	<hr/>

Benefits for Staff Relative to Collective Bargaining Agreements

	OBJECT	COVERED	NOT COVERED	TOTAL
10 General Fund	No Self Insurance data to report			
	211 Medical Insurance	10,591,131.91	846,202.80	11,437,334.71
	212 Dental Insurance	413,642.65	37,912.56	451,555.21
	215 Eye Care Insurance	69,531.64	6,044.40	75,576.04
	216 Prescription Insurance			
	271 Self-Insurance Medical Benefits			
	272 Self-Insurance Dental Benefits			
	275 Self-Insurance Eye Care Benefits			
	276 Self-Insurance Prescription Benefits			
	FUND TOTAL	\$11,074,306.20	\$890,159.76	\$11,964,465.96
50 Enterprise Fund	No Self Insurance data to report			
	211 Medical Insurance		56,344.80	56,344.80
	212 Dental Insurance		1,635.80	1,635.80
	215 Eye Care Insurance		2,877.00	2,877.00
	216 Prescription Insurance			
	271 Self-Insurance Medical Benefits			
	272 Self-Insurance Dental Benefits			
	275 Self-Insurance Eye Care Benefits			
	276 Self-Insurance Prescription Benefits			
	FUND TOTAL		\$60,857.60	\$60,857.60
60 Internal Service Fund	No Self Insurance data to report			
	211 Medical Insurance			
	212 Dental Insurance			
	215 Eye Care Insurance			
	216 Prescription Insurance			
	271 Self-Insurance Medical Benefits			
	272 Self-Insurance Dental Benefits			
	275 Self-Insurance Eye Care Benefits			
	276 Self-Insurance Prescription Benefits			
	FUND TOTAL			
Total of All Funds		\$11,074,306.20	\$951,017.36	\$12,025,323.56

LEA : 104107903 Seneca Valley SD

Printed 12/2/2020 2:24:08 PM

Function	Special Education (Prior Year)	Nonspecial Education (Prior Year)	Total (Prior Year)	Special Education (Current Year)	Nonspecial Education (Current Year)	Total (Current Year)
2120 Guidance Services	401,936.27	2,277,638.89	2,679,575.16	433,494.10	2,456,466.59	2,889,960.69
2140 Psychological Services	95,677.29	967,403.76	1,063,081.05	91,096.15	921,083.31	1,012,179.46
2150 Speech Pathology and Audiology Services	3,761.08	2,801.42	6,562.50	945.53	5,357.97	6,303.50
2160 Social Work Services						
2260 Instruction and Curriculum Development Services	172,606.47	978,103.32	1,150,709.79	176,228.49	998,628.08	1,174,856.57
2350 Legal and Accounting Services	6,623.95	56,113.92	62,737.87	7,817.20	44,297.50	52,114.70
2420 Medical Services	4,539.62	10,104.32	14,643.94	6,002.57	13,360.56	19,363.13
2440 Nursing Services	360,146.24	801,615.83	1,161,762.07	364,928.53	812,260.27	1,177,188.80
2700 Student Transportation Services	1,517,877.02	7,051,398.53	8,569,275.55	1,320,146.10	5,084,303.83	6,404,449.93
Total	\$2,563,167.94	\$12,145,179.99	\$14,708,347.93	\$2,400,658.67	\$10,335,758.11	\$12,736,416.78

LEA : 104107903 Seneca Valley SD

Printed 12/2/2020 2:24:13 PM

(PRINCIPAL AMOUNTS ONLY)

GOVERNMENTAL FUNDS/ ACTIVITIES

	Short-Term Borrowing	General Obligation Bonds/Notes	Authority Building Obligations	Other Long-Term Debt	Other Post-Employment Benefits (OPEB)	Compensated Absences	Net Pension Liability	Total
1. Debt at Beginning of Fiscal Year		91,780,000.00			50,857,314.00	1,169,958.00	187,144,720.00	330,951,992.00
2. Additional Debt Incurred During Year		14,355,000.00				128,443.29		14,483,443.29
3. Retirements and Repayments		22,350,000.00			3,039,276.00	33,777.00	409,640.00	25,832,693.00
4. Debt at End of Fiscal Year		83,785,000.00			47,818,038.00	1,264,624.29	186,735,080.00	319,602,742.29
5. Accreted Interest at End Of Fiscal Year								
6. Total Debt and Accreted Interest		83,785,000.00			47,818,038.00	1,264,624.29	186,735,080.00	319,602,742.29
7. Current Portion P&I - Due within 1 year		9,684,601.00						9,684,601.00
8. Interest Paid during current fiscal year		3,624,967.50						3,624,967.50

(PRINCIPAL AMOUNTS ONLY)

PROPRIETARY FUNDS

	Short-Term Borrowing	General Obligation Bonds/Notes	Authority Building Obligations	Other Long-Term Debt	Other Post-Employment Benefits (OPEB)	Compensated Absences	Net Pension Liability	Total
1. Debt at Beginning of Fiscal Year					165,880.00	2,281.00	3,819,280.00	3,987,441.00
2. Additional Debt Incurred During Year					7,380.00	75.00		7,455.00
3. Retirements and Repayments							8,360.00	8,360.00
4. Debt at End of Fiscal Year					173,260.00	2,356.00	3,810,920.00	3,986,536.00
5. Accreted Interest at End Of Fiscal Year								
6. Total Debt and Accreted Interest					173,260.00	2,356.00	3,810,920.00	3,986,536.00
7. Current Portion P&I - Due within 1 year								
8. Interest Paid during current fiscal year								

Total Principal and Interest Payments Made by Your School - All Funds

Function	Fund		Principal (910)	Principal (920)	Interest (830)	Total (Principal +Interest)	Misc Other Uses (990)
5110	10	General Fund	6,210,000.00		3,428,516.69	9,638,516.69	
5110	20	Special Revenue Funds					
5110	30	Capital Projects Funds					
5110	40	Debt Service Fund					
5110	90	Permanent Fund					
5120	10	General Fund					
5120	20	Special Revenue Funds					
5120	30	Capital Projects Funds					
5120	40	Debt Service Fund	16,140,000.00		296,986.00	16,436,986.00	
Total Debt Payments - Governmental Funds			\$22,350,000.00		\$3,725,502.69	\$26,075,502.69	

Function	Fund		Principal (910)	Principal (920)	Interest (830)	Total (Principal +Interest)
5110	50	Enterprise Fund				
5110	60	Internal Service Fund				
5120	50	Enterprise Fund				
5120	60	Internal Service Fund				
Total Debt Payments - Proprietary Funds						

LEA : 104107903 Seneca Valley SD

Printed 12/2/2020 2:24:13 PM

Debt Details
Governmental Funds/ Activities

Debt Category	Debt Issue Date (MM/YYYY)	Principal Amounts Only			Debt at End of Fiscal Year	Current Portion Due Within One Year (Principal and Interest)	Interest Paid During Fiscal Year
		Debt at Beginning of Fiscal Year	Additions	Reductions / Repayments			
General Obligation Bonds/Notes – CIB	02/2020		14,355,000.00	125,000.00	14,230,000.00	729,200.00	57,295.00
General Obligation Bonds/Notes – CIB	07/2018	16,950,000.00		305,000.00	16,645,000.00	816,800.00	820,950.00
General Obligation Bonds/Notes – CIB	11/2016	8,795,000.00		105,000.00	8,690,000.00	526,250.00	228,350.00
General Obligation Bonds/Notes – CIB	11/2016	4,500,000.00		1,775,000.00	2,725,000.00	263,600.00	111,850.00
General Obligation Bonds/Notes – CIB	05/2015	16,305,000.00		3,705,000.00	12,600,000.00	6,042,688.00	712,937.50
General Obligation Bonds/Notes – CIB	05/2015	1,960,000.00			1,960,000.00	98,000.00	98,000.00
General Obligation Bonds/Notes – CIB	05/2015	26,935,000.00			26,935,000.00	1,208,063.00	1,208,062.50
General Obligation Bonds/Notes – CIB	12/2014	9,980,000.00		9,980,000.00			253,600.00
General Obligation Bonds/Notes – CIB	10/2012	5,125,000.00		5,125,000.00			107,212.50
General Obligation Bonds/Notes – CIB	05/2012	525,000.00		525,000.00			11,570.00
General Obligation Bonds/Notes – CIB	04/2012	510,000.00		510,000.00			11,240.00
General Obligation Bonds/Notes – CIB	05/2012	195,000.00		195,000.00			3,900.00
Compensated Absences		1,169,958.00	128,443.29	33,777.00	1,264,624.29		
Other Post-Employment Benefits (OPEB)		50,857,314.00		3,039,276.00	47,818,038.00		
Net Pension Liability		187,144,720.00		409,640.00	186,735,080.00		
Totals for Debt Entered:		\$330,951,992.00	\$14,483,443.29	\$25,832,693.00	\$319,602,742.29	\$9,684,601.00	\$3,624,967.50

Bond Details
Proprietary Funds

Debt Category	Debt Issue Date (MM/YYYY)	Principal Amounts Only			Debt at End of Fiscal Year	Current Portion Due Within One Year (Principal and Interest)	Interest Paid During Fiscal Year
		Debt at Beginning of Fiscal Year	Additions	Reductions / Repayments			
Compensated Absences		2,281.00	75.00		2,356.00		
Other Post-Employment Benefits (OPEB)		165,880.00	7,380.00		173,260.00		
Net Pension Liability		3,819,280.00		8,360.00	3,810,920.00		
Totals for Debt Entered:		\$3,987,441.00	\$7,455.00	\$8,360.00	\$3,986,536.00		

General Fund (10)

Section 1: Tuition/Purchased Services as Reported within Expenditure Detail

	Amount
Tuition Reported in General Fund Expenditures 1000-560	5,038,459.42
Purchased Services in General Fund Expenditures 1000-594 and 1000-597	2,551.66

Section 1 Total	\$5,041,011.08
------------------------	-----------------------

Section 2: Tuition Paid to Institution Types During Fiscal Year

	Tuition Paid For Nonspecial Education	Tuition Paid For Special Education	Total
1 1306 Institutions		36,705.54	36,705.54
2 Institutionalized Children's Programs			
3 Juveniles Incarcerated in Adult Facilities			
4 Residential Treatment Facilities	22,940.00	1,483,426.93	1,506,366.93
5 Other Local Education Agencies			
6 Brick and Mortar Charter Schools	345,420.18	245,550.20	590,970.38
7 Cyber Charter Schools	730,403.01	519,017.03	1,249,420.04
8 Career and Technology Centers	618,014.96		618,014.96
9 Approved Private Schools		1,039,533.23	1,039,533.23
10 PA Chartered Schools for the Deaf and Blind			
11 Private Residential Rehabilitative Institutions			
12 Juvenile Detention Centers			
13 Special Program Jointures			
14 Other Tuition Not Included Elsewhere In This Section			
Section 2 Total	\$1,716,778.15	\$3,324,232.93	\$5,041,011.08

LEA : 104107903 Seneca Valley SD

Printed 12/2/2020 2:24:21 PM

Food Service / Cafeteria Operations Fund (51)

3000 Operation of Non-Instructional Services

Total

100 Personnel Services – Salaries

100 Personnel Services – Salaries 1,059,513.90

Total Personnel Services – Salaries \$1,059,513.90

200 Personnel Services – Employee Benefits

210 Group Insurance – Contracted Provider 58,854.76

220 Social Security Contributions 78,915.30

230 PSERS Retirement Contributions 432,963.46

250 Unemployment Compensation 617.60

260 Workers' Compensation 2,162.87

Total Personnel Services – Employee Benefits \$573,513.99

300 Purchased Professional and Technical Services

329 Professional Educational Services – Other 1,572.10

Total Purchased Professional and Technical Services \$1,572.10

400 Purchased Property Services

420 Utility Services 19,434.63

430 Repairs and Maintenance Services 7,837.47

Total Purchased Property Services \$27,272.10

500 Other Purchased Services

530 Communications 1,077.35

540 Advertising 1,328.00

550 Printing and Binding 3,696.74

570 Food Service Management 856,257.81

580 Travel 2,214.74

Total Other Purchased Services \$864,574.64

600 Supplies

610 General Supplies 26,673.20

620 Energy 81,901.24

630 Food 195,332.55

Total Supplies \$303,906.99

700 Property

740 Depreciation 46,234.30

Total Property \$46,234.30

800 Other Objects

810 Dues and Fees 1,347.29

Total Other Objects \$1,347.29

Total 3000 Operation of Non-Instructional Services \$2,877,935.31

Food Service / Cafeteria Operations Fund (51)

	<u>Elementary</u>	<u>Secondary</u>	<u>Federal</u>	<u>Total</u>
3100 Food Services				
100 Personnel Services – Salaries				
100 Personnel Services – Salaries				1,059,513.90
Total Personnel Services – Salaries				\$1,059,513.90
200 Personnel Services – Employee Benefits				
210 Group Insurance – Contracted Provider				58,854.76
220 Social Security Contributions				78,915.30
230 PSERS Retirement Contributions				432,963.46
250 Unemployment Compensation				617.60
260 Workers' Compensation				2,162.87
Total Personnel Services – Employee Benefits				\$573,513.99
300 Purchased Professional and Technical Services				
329 Professional Educational Services – Other				1,572.10
Total Purchased Professional and Technical Services				\$1,572.10
400 Purchased Property Services				
420 Utility Services				19,434.63
430 Repairs and Maintenance Services				7,837.47
Total Purchased Property Services				\$27,272.10
500 Other Purchased Services				
530 Communications				1,077.35
540 Advertising				1,328.00
550 Printing and Binding				3,696.74
570 Food Service Management				856,257.81
580 Travel				2,214.74
Total Other Purchased Services				\$864,574.64
600 Supplies				
610 General Supplies				26,673.20
620 Energy				81,901.24
630 Food				195,332.55
Total Supplies				\$303,906.99
700 Property				
740 Depreciation				46,234.30
Total Property				\$46,234.30
800 Other Objects				
810 Dues and Fees				1,347.29
Total Other Objects				\$1,347.29
Total 3100 Food Services				\$2,877,935.31

	<u>Food Service(51)</u>	<u>Child Care Operations(52)</u>	<u>Other Enterprise(58)</u>	<u>Internal Service(60)</u>	<u>Total</u>
3000 <u>Operation of Non-Instructional Services</u>					
3100 Food Services	2,877,935.31				2,877,935.31
Total Operation of Non-Instructional Services	\$2,877,935.31				\$2,877,935.31
TOTAL ACTUAL EXPENDITURES & OTHER FINANCING USES	\$2,877,935.31				\$2,877,935.31

LEA : 104107903 Seneca Valley SD

Printed 12/2/2020 2:24:33 PM

Fund	School	School Number	Local Personnel	Local Nonpersonnel	State Personnel	State Nonpersonnel	Federal Personnel	Federal Nonpersonnel	Total	Explanation
10										
	Connoquenessing Valley El Sch	1178	6,181,901.43	1,546,774.64	2,430,388.11	608,107.83	265,196.97	384.95	11,032,753.93	
	Evans City El Sch	1180	4,840,130.61	1,119,425.21	1,902,876.65	440,097.23	208,719.94	279.23	8,511,528.87	
	Evans City MS	7488	4,343,909.02	989,696.40	1,707,789.25	389,094.91	207,599.87	254.44	7,638,343.89	
	Haine El Sch	4907	6,637,889.88	1,692,005.66	2,609,658.02	665,204.79	234,895.41	433.01	11,840,086.77	
	Haine MS	7489	5,215,361.40	1,246,566.51	2,050,397.03	490,082.29	112,645.18	318.69	9,115,371.10	
	Rowan El Sch	1179	4,518,314.77	1,077,947.93	1,776,356.13	423,790.62	90,831.35	256.97	7,887,497.77	
	Ryan Gloyer MS	5311	13,112,516.17	2,631,278.83	5,155,129.65	1,034,476.02	66,487.31	1,749.12	22,001,637.10	
	Seneca Valley HS	8318	23,965,302.27	5,271,738.29	9,421,856.09	2,072,561.36	138,970.35	3,655.97	40,874,084.33	
Total			68,815,325.55	15,575,433.47	27,054,450.93	6,123,415.05	1,325,346.38	7,332.38	118,901,303.76	