

LEA Name : Seneca Valley SD
Address : 124 Seneca School Rd
Harmony , PA 16037

County : Butler
AUN Number : 104107903
LEA Type : SD

Annual Financial Report Accuracy Certification Statement

For Fiscal Year Ending
6/30/2017

Pennsylvania Department of Education
&
Office of Comptroller Operations

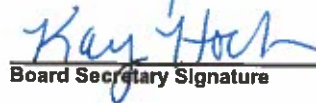
PDE-2056: Intermediate Unit
PDE-2057: School District, AVTS/CTC, Charter School,
and Special Program Jointure

CERTIFICATION: By signing this page I agree that the electronic data submitted is a complete and accurate statement of the financial operations and status of the local education agency for the fiscal year. It has been prepared in accordance with generally accepted accounting principles and established Commonwealth of PA reporting guidelines.



Chief School Administrator Signature

Date 10/31/2017



Board Secretary Signature

Date 10/31/2017

Celeste R Foley

Contact Person

(724)452-6040 Ext :1622

Contact Person Telephone Number

foleycr@svsd.net

Contact Person E-mail Address

Contact Person Fax Number

Audit Certification
Annual Financial Report:
For Fiscal Year Ending 6/30/2017
(Pursuant to PA School Code Section 218(b))

LEA Name : Seneca Valley SD
AUN Number : 104107903
County : Butler

Audit Certification Due: 12/31/2017

This certification is applicable to the Annual Financial Report data submitted through the Consolidated Financial Reporting System on: 10/31/2017
Date

Auditing Firm: Mark C. Turnley, CPA
1000 3rd Avenue
New Brighton, PA
15066

Auditor Contact Name: Mark C. Turnley, CPA
Auditor Phone: (724) 384-1081
Auditor E-mail: mark@mcturnleycpa.com

CERTIFICATION: By signing this page I agree that the financial statements of the school have been properly audited as noted above pursuant to Article XXIV, and in the auditor's professional opinion, the Annual Financial Report (PDE-2057) submitted on the date referenced is materially consistent with the audited financial statements.

Chief School Administrator

 12-22-17
Signature Date

Board Secretary

 12/22/17
Signature Date

Celeste R Foley

Contact Person

foleycr@svsd.net

Contact Person E-mail Address

(724)452-6040

Ext :1622

Contact Person Telephone Number

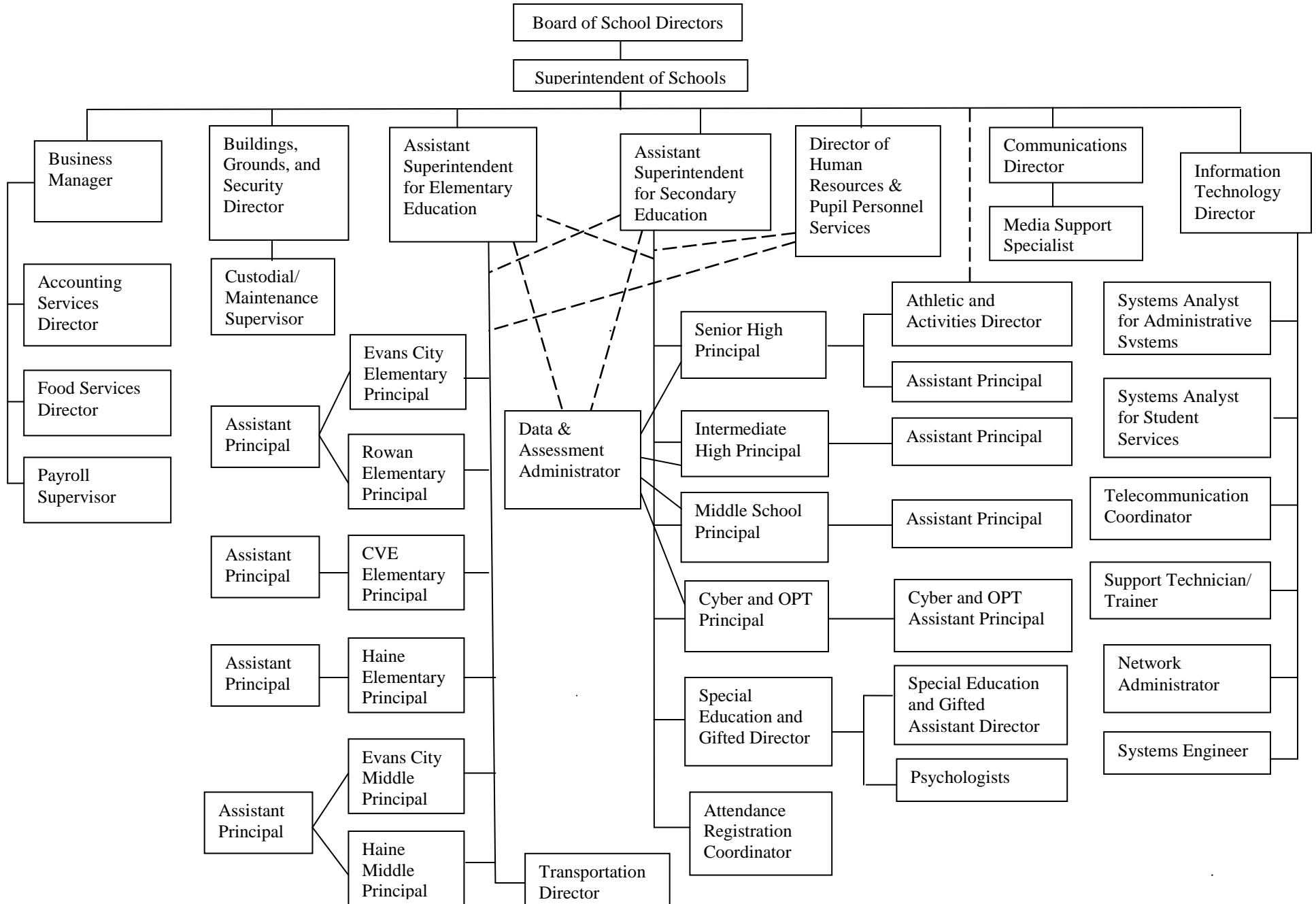
(724) 452-6105

Contact Person Fax Number

SENECA VALLEY SCHOOL DISTRICT

No. 008

SECTION: LOCAL BOARD PROCEDURES
 TITLE: ORGANIZATION CHART
 ADOPTED:
 REVISED: October 20, 2014



Val Number

Description

Justification

50460

SESS - 2420 Medical Services: SESS Schedule amounts for Special Education vary from prior year by 40% or more. Correct the data or enter a justification.

The increase in 2016-2017 over 2015-2016 is due to equipment purchases.

SESS Schedule 2420: \$8,314.26
Prior Year SESS Schedule 2420: \$3,310.30

Amounts Expressed in Whole Dollars	<u>General Fund</u> <u>(10)</u>	<u>Public Purpose Trust</u> <u>(27)</u>	<u>Other Compt Approved</u> <u>(28)</u>	<u>Athletic / Activity</u> <u>(29)</u>	<u>Capital Reserve (690.</u> <u>1850)</u> <u>(31)</u>
Assets And Deferred Outflows Of Resources					
Assets					
0100 Cash and Cash Equivalents	11,845,687				
0110 Investments	29,321,378				
0120 Taxes Receivable	196,301				
0130 Due From Other Funds	103,036				
0141 Due From Other Governments	5,145,289				
0142 State Revenue Receivable					
0143 Federal Revenue Receivable					
0145 Other Intergovernmental Revenue Receivable					
0146 Due from Primary Government					
0147 Due from Component Unit					
0150 Other Receivables	125,012				
0170 Inventories					
0180 Prepaid Expenses (Expenditures)					
0190 Other Current Assets					
Total Assets	\$46,736,703				
0910 Deferred Outflows of Resources					
Total Assets And Deferred Outflows Of Resources	\$46,736,703				

Amounts Expressed in Whole Dollars

	<u>Capital Reserve (1431)</u> <u>(32)</u>	<u>Other Capital Projects</u> <u>Fund</u> <u>(39)</u>	<u>Debt Service</u> <u>(40)</u>	<u>Permanent</u> <u>(90)</u>	<u>Total Governmental</u> <u>Funds</u>
Assets And Deferred Outflows Of Resources					
Assets					
0100 Cash and Cash Equivalents		7,049,205			18,894,892
0110 Investments		30,076,484			59,397,862
0120 Taxes Receivable					196,301
0130 Due From Other Funds					103,036
0141 Due From Other Governments					5,145,289
0142 State Revenue Receivable					
0143 Federal Revenue Receivable					
0145 Other Intergovernmental Revenue Receivable					
0146 Due from Primary Government					
0147 Due from Component Unit					
0150 Other Receivables					125,012
0170 Inventories					
0180 Prepaid Expenses (Expenditures)					
0190 Other Current Assets					
Total Assets		\$37,125,689			\$83,862,392
0910 Deferred Outflows of Resources					
Total Assets And Deferred Outflows Of Resources		\$37,125,689			\$83,862,392

Amounts Expressed in Whole Dollars	<u>General Fund</u> <u>(10)</u>	<u>Public Purpose Trust</u> <u>(27)</u>	<u>Other Compt Approved</u> <u>(28)</u>	<u>Athletic / Activity</u> <u>(29)</u>	<u>Capital Reserve (690.</u> <u>1850)</u> <u>(31)</u>
Liabilities And Deferred Inflows Of Resources And Fund Balances					
Liabilities					
0400 Due to Other Funds	182,533				
0411 Due to Other Governments					
0412 Due to Primary Government					
0413 Due to Component Unit					
0420 Accounts Payable	2,195,667				
0430 Contracts Payable					
0440 Current Portion of Long-Term Debt					
0450 Short-Term Payables					
0461 Accrued Salaries and Benefits	6,919,462				
0462 Payroll Deductions and Withholding	4,957,289				
0480 Unearned Revenues	30,034				
0490 Other Current Liabilities	10,467				
Total Liabilities	\$14,295,452				
0950 Deferred Inflows of Resources					
Fund Balances					
0810 Nonspendable Fund Balance					
0820 Restricted Fund Balance					
0830 Committed Fund Balance	7,500,000				
0840 Assigned Fund Balance	16,191,251				
0850 Unassigned Fund Balance	8,750,000				
Total Fund Balances	\$32,441,251				
Total Liabilities, Deferred Inflows Of Resources And Fund Balances	\$46,736,703				

Amounts Expressed in Whole Dollars

	<u>Capital Reserve (1431)</u> <u>(32)</u>	<u>Other Capital Projects</u> <u>Fund</u> <u>(39)</u>	<u>Debt Service</u> <u>(40)</u>	<u>Permanent</u> <u>(90)</u>	<u>Total Governmental</u> <u>Funds</u>
Liabilities And Deferred Inflows Of Resources And Fund Balances					
Liabilities					
0400 Due to Other Funds					182,533
0411 Due to Other Governments					
0412 Due to Primary Government					
0413 Due to Component Unit					
0420 Accounts Payable		843,566			3,039,233
0430 Contracts Payable					
0440 Current Portion of Long-Term Debt					
0450 Short-Term Payables					
0461 Accrued Salaries and Benefits					6,919,462
0462 Payroll Deductions and Withholding					4,957,289
0480 Unearned Revenues					30,034
0490 Other Current Liabilities					10,467
Total Liabilities		\$843,566			\$15,139,018
0950 Deferred Inflows of Resources					
Fund Balances					
0810 Nonspendable Fund Balance					
0820 Restricted Fund Balance		7,049,205			7,049,205
0830 Committed Fund Balance					7,500,000
0840 Assigned Fund Balance		29,232,918			45,424,169
0850 Unassigned Fund Balance					8,750,000
Total Fund Balances		\$36,282,123			\$68,723,374
Total Liabilities, Deferred Inflows Of Resources And Fund Balances		\$37,125,689			\$83,862,392

Amounts Expressed in Whole Dollars	<u>General Fund</u> <u>(10)</u>	<u>Public Purpose Trust</u> <u>(27)</u>	<u>Other Compt Approved</u> <u>(28)</u>	<u>Athletic / Activity</u> <u>(29)</u>	<u>Capital Reserve (690.</u> <u>1850)</u> <u>(31)</u>
Revenues					
6000 Revenue from Local Sources	88,450,502				
7000 Revenue from State Sources	34,860,250				
8000 Revenue from Federal Sources	445,274				
Total Revenues	\$123,756,026				
Expenditures					
1000 Instruction	73,744,720				
2000 Support Services	32,056,021				
3000 Operation of Non-Instructional Services	2,059,191				
4000 Facilities Acquisition, Construction and Improvement Services	175,543				
5110 Debt Service	9,784,611				
5130 Refund of Prior Year Revenues / Receipts	98,896				
Total Expenditures	\$117,918,982				
Excess (Deficiency) Of Revenues Over Expenditures	\$5,837,044				
Other Financing Sources (Uses)					
9110 Face Value of Bonds Issued					
9120 Proceeds from Refunding of Bonds					
9130 Bond Premiums					
9200 Proceeds from Extended-Term Financing					
9300 Interfund Transfers - IN					
9400 Sale of or Compensation for Loss of Fixed Assets					
9710 Transfers from Component Units					
9720 Transfers from Primary Governments					
9910 Other Financing Sources Not Listed in the 9000 Series					
9990 Insurance Recoveries					
5120 Debt Service – Refunded Bonds					
5150 Bond Discounts					
5200 Interfund Transfers – Out					
5300 Transfers Out to Component Units/Primary Governments					
Total Other Financing Sources (Uses)					

Amounts Expressed in Whole Dollars	<u>Capital Reserve (1431)</u> <u>(32)</u>	<u>Other Capital Projects</u> <u>Fund</u> <u>(39)</u>	<u>Debt Service</u> <u>(40)</u>	<u>Permanent</u> <u>(90)</u>	<u>Total Governmental</u> <u>Funds</u>
Revenues					
6000 Revenue from Local Sources		119,507			88,570,009
7000 Revenue from State Sources					34,860,250
8000 Revenue from Federal Sources					445,274
Total Revenues		\$119,507			\$123,875,533
Expenditures					
1000 Instruction					73,744,720
2000 Support Services			265,946		32,321,967
3000 Operation of Non-Instructional Services					2,059,191
4000 Facilities Acquisition, Construction and Improvement Services		5,158,540			5,334,083
5110 Debt Service					9,784,611
5130 Refund of Prior Year Revenues / Receipts					98,896
Total Expenditures		\$5,158,540	\$265,946		\$123,343,468
Excess (Deficiency) Of Revenues Over Expenditures		(\$5,039,033)	(\$265,946)		\$532,065
Other Financing Sources (Uses)					
9110 Face Value of Bonds Issued					
9120 Proceeds from Refunding of Bonds			17,450,000		17,450,000
9130 Bond Premiums			683,720		683,720
9200 Proceeds from Extended-Term Financing					
9300 Interfund Transfers - IN					
9400 Sale of or Compensation for Loss of Fixed Assets					
9710 Transfers from Component Units					
9720 Transfers from Primary Governments					
9910 Other Financing Sources Not Listed in the 9000 Series					
9990 Insurance Recoveries					
5120 Debt Service – Refunded Bonds			17,867,774		17,867,774
5150 Bond Discounts					
5200 Interfund Transfers – Out					
5300 Transfers Out to Component Units/Primary Governments					
Total Other Financing Sources (Uses)			\$265,946		\$265,946

Amounts Expressed in Whole Dollars	<u>General Fund</u> <u>(10)</u>	<u>Public Purpose Trust</u> <u>(27)</u>	<u>Other Compt Approved</u> <u>(28)</u>	<u>Athletic / Activity</u> <u>(29)</u>	<u>Capital Reserve</u> <u>(690.</u> <u>1850)</u> <u>(31)</u>
Special And Extraordinary Items					
9920 Special Items – Gains					
9930 Extraordinary Items – Gains					
5520 Special Items – Losses					
5530 Extraordinary Items – Losses					
Net Change In Fund Balances	\$5,837,044				
Fund Balance					
0001 Fund Balance - Beginning of Fiscal Year	26,604,206				
Fund Balance - End Of Year	\$32,441,250				

Amounts Expressed in Whole Dollars	<u>Capital Reserve (1431)</u> <u>(32)</u>	<u>Other Capital Projects</u> <u>Fund</u> <u>(39)</u>	<u>Debt Service</u> <u>(40)</u>	<u>Permanent</u> <u>(90)</u>	<u>Total Governmental</u> <u>Funds</u>
Special And Extraordinary Items					
9920 Special Items – Gains					
9930 Extraordinary Items – Gains					
5520 Special Items – Losses					
5530 Extraordinary Items – Losses					
Net Change In Fund Balances		(\$5,039,033)			\$798,011
Fund Balance					
0001 Fund Balance - Beginning of Fiscal Year		41,321,156			67,925,362
Fund Balance - End Of Year		\$36,282,123			\$68,723,373

Amounts Expressed in Whole Dollars	<u>Food Service</u> <u>(51)</u>	<u>Child Care</u> <u>Operations</u> <u>(52)</u>	<u>Other Enterprise</u> <u>(58)</u>	<u>TOTAL</u>	<u>Internal Service</u> <u>(60)</u>
Assets And Deferred Outflows Of Resources					
Current Assets					
0100 Cash and Cash Equivalents	1,447,425			1,447,425	
0110 Investments					
0130 Due From Other Funds	182,533			182,533	
0141 Due From Other Governments	76,781			76,781	
0142 State Revenue Receivable					
0143 Federal Revenue Receivable					
0146 Due from Primary Government					
0147 Due from Component Unit					
0150 Other Receivables	5,454			5,454	
0170 Inventories	52,884			52,884	
0180 Prepaid Expenses (Expenditures)					
0190 Other Current Assets					
Total Current Assets	\$1,765,077			\$1,765,077	
Noncurrent Assets					
0211 Land					
0212 Site Improvements (Net)					
0220 Buildings and Building Improvements (Net)					
0230 Machinery, Equipment and Furniture (Net)	216,919			216,919	
0250 Construction in Progress					
0260 Long Term Prepayments					
0290 Other Noncurrent Assets					
Total Noncurrent Assets	\$216,919			\$216,919	
0910 Deferred Outflows of Resources	795,313			795,313	
Total Assets And Deferred Outflows Of Resources	\$2,777,309			\$2,777,309	

Amounts Expressed in Whole Dollars	<u>Food Service</u> <u>(51)</u>	<u>Child Care</u> <u>Operations</u> <u>(52)</u>	<u>Other Enterprise</u> <u>(58)</u>	<u>TOTAL</u>	<u>Internal Service</u> <u>(60)</u>
Liabilities And Deferred Inflows Of Resources And Net Position					
Current Liabilities					
0400 Due to Other Funds	103,036			103,036	
0411 Due to Other Governments					
0413 Due to Component Unit					
0420 Accounts Payable	78,540			78,540	
0430 Contracts Payable					
0440 Current Portion of Long-Term Debt					
0450 Short-Term Payables					
0461 Accrued Salaries and Benefits					
0462 Payroll Deductions and Withholding					
0480 Unearned Revenues	23,932			23,932	
0490 Other Current Liabilities					
Total Current Liabilities	\$205,508			\$205,508	
Noncurrent Liabilities					
0510 Bonds Payable					
0520 Extended-Term Financing Agreements Payable					
0530 Lease-Purchase Obligations					
0540 Accumulated Compensated Absences	2,319			2,319	
0550 Authority Lease Obligations					
0560 Other Post-Employment Benefits (OPEB)					
0570 Net Pension Liability	3,755,420			3,755,420	
0599 Other Noncurrent Liabilities					
Total Noncurrent Liabilities	\$3,757,739			\$3,757,739	
Total Liabilities	\$3,963,247			\$3,963,247	
0950 Deferred Inflows of Resources	31,280			31,280	
Net Position					
0791 Net Investment in Capital Assets	216,919			216,919	
0008 Restricted Net Position (0792 – 0798)					
0799 Unrestricted Net Position	(1,434,137)			(1,434,137)	
Total Net Position	(\$1,217,218)			(\$1,217,218)	
Total Liabilities And Deferred Inflows Of Resources And Net Position	\$2,777,309			\$2,777,309	

Amounts Expressed in Whole Dollars	<u>Food Service</u> <u>(51)</u>	<u>Child Care Operations</u> <u>(52)</u>	<u>Other Enterprise</u> <u>(58)</u>	<u>TOTAL</u>	<u>Internal Service</u> <u>(60)</u>
Operating Revenues					
6600 Food Service Revenue	1,682,837			1,682,837	
0071 Charges for Services					
0072 Other Operating Revenue					
Total Operating Revenues	\$1,682,837			\$1,682,837	
Operating Expenses					
100 Personnel Services – Salaries	946,365			946,365	
200 Personnel Services – Employee Benefits	532,623			532,623	
300 Purchased Professional and Technical Services	2,899			2,899	
400 Purchased Property Services	142,767			142,767	
500 Other Purchased Services	4,342			4,342	
600 Supplies	1,101,977			1,101,977	
740 Depreciation	47,245			47,245	
810 Dues and Fees	1,228			1,228	
890 Miscellaneous Expenditures					
Total Operating Expenses	\$2,779,446			\$2,779,446	
Operating Income (Loss)	(\$1,096,609)			(\$1,096,609)	
Non Operating Revenues (Expenses)					
6500 Earnings on Investments	1,133			1,133	
6920 Contributions and Donations from Private Sources	10,180			10,180	
6930 Gains or Losses on Sale of Fixed Assets	1,100			1,100	
6991 Refunds of a Prior Year Expenditure	(3,297)			(3,297)	
7000 Revenue from State Sources	239,281			239,281	
8000 Revenue from Federal Sources	795,769			795,769	
820 Claims and Judgments Against the LEA					
830 Interest					
TOTAL Non Operating Revenues (Expenses)	\$1,044,166			\$1,044,166	
Income (Loss) Before Contributions And Transfers	(\$52,443)			(\$52,443)	

Amounts Expressed in Whole Dollars	<u>Food Service</u> <u>(51)</u>	<u>Child Care Operations</u> <u>(52)</u>	<u>Other Enterprise</u> <u>(58)</u>	<u>TOTAL</u>	<u>Internal Service</u> <u>(60)</u>
Contributions, Transfers, and Special and Extraordinary Items					
5200 Interfund Transfers – Out					
5300 Transfers Out to Component Units/Primary Governments					
5520 Special Items – Losses					
5530 Extraordinary Items – Losses					
9300 Interfund Transfers - IN					
9500 Capital Contributions					
9700 Transfers IN From Component Units/Primary Governments					
9920 Special Items – Gains					
9930 Extraordinary Items – Gains					
Change In Net Position	(\$52,443)			(\$52,443)	
0002 Net Position - Beginning of Fiscal Year	(1,164,775)			(1,164,775)	
0003 Accounting Changes / Residual Equity Transfers					
Net Position - End Of Year	(\$1,217,218)			(\$1,217,218)	

Amounts Expressed in Whole Dollars	<u>Food Service</u> <u>(51)</u>	<u>Child Care Operations</u> <u>(52)</u>	<u>Other Enterprise</u> <u>(58)</u>	<u>TOTAL</u>	<u>Internal Service(60)</u>
Cash Flows From Operating Activities					
0011 Cash Receipts From Users	1,689,546			1,689,546	
0012 Cash Receipts From Assessments Made to Other Funds					
0013 Cash Receipts From Earnings on Investments					
0014 Cash Receipts From Other Operating Revenue					
0015 Cash Payments To Employees For Services	1,389,775			1,389,775	
0016 Cash Payments For Insurance Claims					
0017 Cash Payments To Suppliers For Goods and Services	1,055,169			1,055,169	
0018 Cash Payments For Other Operating Expenses					
Net Cash Provided By (Used For) Operating Activities	(\$755,398)			(\$755,398)	
Cash Flows From Non-Capital Financing Activities					
0021 Receipts From Local Sources - 6000					
0022 Receipts From State Sources - 7000	232,483			232,483	
0023 Receipts From Federal Sources -8000	538,262			538,262	
0024 Notes and Loans Received (Repaid)					
0025 Interest Paid on Notes/Loans - 5100-830					
0026 Operating Transfers In (Out)/Residual Equity Trans					
0027 Operating Transfers In (Out) Primary Government / Comp Unit					
0028 Receipts From Refund of Prior Year Expenditures - 6991					
0029 Special and Extraordinary Gains (losses)					
Net Cash Prov By (Used for) Non-Capital Financing Activities	\$770,745			\$770,745	
Cash Flows From Capital and Related Financing Activities					
0031 Payments For Fac Acq, Const, and Imp - 4000	(17,126)			(17,126)	
0032 Gain / (Loss) on Sale of Fixed Assets - 6930	1,100			1,100	
0033 Proceeds From Extended Term Financing - 9200					
0034 Principal Paid on Financing Agreements					
0035 Interest Paid on Financing Agreements - 5100-830					
0036 (Inc) Dec in Contributed Capital	6,883			6,883	
Net Cash Prov By (Used for) Capital and Related Financing Activities	(\$9,143)			(\$9,143)	
Cash Flows From Investing Activities					
0041 Earnings on Investments - 6500	1,133			1,133	
0042 Purchase of Inv Securities / Deposits to Inv Pools					
0043 Receipts From Investment Pool Withdrawals					
0044 Proceeds from Sale and Maturity of Inv Securities					
0045 Loans Received (Paid)					
Net Cash Prov By (Used for) Investing Activities	\$1,133			\$1,133	

	<u>Food Service</u> <u>(51)</u>	<u>Child Care Operations</u> <u>(52)</u>	<u>Other Enterprise</u> <u>(58)</u>	<u>TOTAL</u>	<u>Internal Service</u> <u>(60)</u>
Net Increase (Decrease) in Cash Flows	7,337			7,337	
0004 Cash and Cash Equivalents Beginning of Year	1,440,088			1,440,088	
Cash and Cash Equivalents at Year End	\$1,447,425			\$1,447,425	

Reconciliation of Operating Income (Loss) To Net Cash Provided by (Used For) Operating Activities

0005 Operating Income (Loss) per REP	(1,096,609)			(1,096,609)	
Adjustments					
0051 Depreciation and Net Amortization	230,785			230,785	
0052 Provision for Uncollectible Accounts					
0053 Other Adjustments	113,564			113,564	
Effect of Changes in Assets, Liabilities, Deferred Outflows and Deferred Inflows					
0054 (Inc) Dec In Accounts Receivable (0120-0150)	2,001			2,001	
0055 Advances to Other Funds (0160)	(19,163)			(19,163)	
0056 (Inc) Dec in Inventories (0170)	15,912			15,912	
0057 (Inc) Dec in Prepaid Expenses (0180)					
0058 (Inc) Dec in Other Current or Noncurrent Assets					
0064 Deferred Outflows (0910)					
0059 Inc (Dec) in Accounts Payable (0400-0450)					
0060 Inc (Dec) in Accrued Salaries/Benefits (0461)					
0065 Inc (Dec) in Net Pension Liabilities (0570)					
0066 Inc (Dec) in Other Postemp Benefit Oblig (0560)					
0061 Inc (Dec) in Payroll Deductions/Withholding (0462)	3,404			3,404	
0062 Inc (Dec) in Unearned Revenue (0480)	(5,480)			(5,480)	
0063 Inc (Dec) in Other Current or Noncurrent Liabilities	188			188	
0067 Deferred Inflows (0950)					
Total Adjustments	\$341,211			\$341,211	
Cash Provided By (Used for) Total	(\$755,398)			(\$755,398)	

COMBINED STATEMENT OF CASH FLOWS
SCHEDULE OF NONCASH INVESTING, CAPITAL, AND FINANCING ACTIVITIES

Explanation of Transaction and Balance Sheet Effect	Amount
Total	

LEA : 104107903 Seneca Valley SD

Printed 4/26/2018 10:57:16 AM

Amounts Expressed in Whole Dollars	<u>Private Purpose Trust</u> (71)	<u>Investment Trust</u> (72)	<u>Pension Trust</u> (73)	<u>Activity</u> (81)
Assets And Deferred Outflows Of Resources				
Assets				
0100 Cash and Cash Equivalents	102,864			294,575
0110 Investments				
0130 Due From Other Funds				
0147 Due from Component Unit				
0150 Other Receivables				
0170 Inventories				
0180 Prepaid Expenses (Expenditures)				
0190 Other Current Assets				
0220 Buildings and Building Improvements (Net)				
0230 Machinery, Equipment and Furniture (Net)				
Total Assets	\$102,864			\$294,575
0910 Deferred Outflows of Resources				
Total Assets And Deferred Outflows Of Resources	\$102,864			\$294,575

LEA : 104107903 Seneca Valley SD

Printed 4/26/2018 10:57:16 AM

Amounts Expressed in Whole Dollars

	<u>Other Agency</u> <u>(89)</u>	<u>Discrete Component Units</u> <u>(98)</u>	<u>Discrete Component Units</u> <u>(99)</u>	<u>Total Fiduciary Funds</u>
Assets And Deferred Outflows Of Resources				
Assets				
0100 Cash and Cash Equivalents				397,439
0110 Investments				
0130 Due From Other Funds				
0147 Due from Component Unit				
0150 Other Receivables				
0170 Inventories				
0180 Prepaid Expenses (Expenditures)				
0190 Other Current Assets				
0220 Buildings and Building Improvements (Net)				
0230 Machinery, Equipment and Furniture (Net)				
Total Assets				\$397,439
0910 Deferred Outflows of Resources				
Total Assets And Deferred Outflows Of Resources				\$397,439

LEA : 104107903 Seneca Valley SD

Printed 4/26/2018 10:57:16 AM

Amounts Expressed in Whole Dollars	<u>Private Purpose Trust</u> (71)	<u>Investment Trust</u> (72)	<u>Pension Trust</u> (73)	<u>Activity</u> (81)
Liabilities, Deferred Inflows Of Resources And Net Position				
Liabilities				
0400 Due to Other Funds				
0411 Due to Other Governments				
0412 Due to Primary Government				
0413 Due to Component Unit				
0420 Accounts Payable				
0430 Contracts Payable				
0450 Short-Term Payables				
0461 Accrued Salaries and Benefits				
0462 Payroll Deductions and Withholding				
0480 Unearned Revenues				
0490 Other Current Liabilities				294,575
Total Liabilities				\$294,575
0950 Deferred Inflows of Resources				
Net Position				
0791 Net Investment in Capital Assets				
0009 Restricted Net Position (0792 – 0798)				
0799 Unrestricted Net Position	102,864			
Total Net Position	\$102,864			
Total Liabilities, Deferred Inflows Of Resources And Net Position	\$102,864			\$294,575

LEA : 104107903 Seneca Valley SD

Printed 4/26/2018 10:57:16 AM

Amounts Expressed in Whole Dollars

<u>Other Agency</u>	<u>Discrete Component Units</u>	<u>Discrete Component Units</u>	<u>Total Fiduciary Funds</u>
(89)	(98)	(99)	

Liabilities, Deferred Inflows Of Resources And Net Position

Liabilities

0400 Due to Other Funds			
0411 Due to Other Governments			
0412 Due to Primary Government			
0413 Due to Component Unit			
0420 Accounts Payable			
0430 Contracts Payable			
0450 Short-Term Payables			
0461 Accrued Salaries and Benefits			
0462 Payroll Deductions and Withholding			
0480 Unearned Revenues			
0490 Other Current Liabilities			294,575

Total Liabilities			\$294,575
--------------------------	--	--	------------------

0950 Deferred Inflows of Resources

Net Position

0791 Net Investment in Capital Assets			
0009 Restricted Net Position (0792 – 0798)			
0799 Unrestricted Net Position			102,864

Total Net Position			\$102,864
---------------------------	--	--	------------------

Total Liabilities, Deferred Inflows Of Resources And Net Position			\$397,439
--	--	--	------------------

Amounts Expressed in Whole Dollars	<u>Private Purpose Trust</u> (71)	<u>Investment Trust</u> (72)	<u>Pension Trust</u> (73)	<u>Discrete Component</u> <u>Units</u> (98)	<u>Discrete Component</u> <u>Units</u> (99)	<u>Total Fiduciary</u> <u>Funds</u>
Additions						
0091 Gifts and Contributions						
0092 Other Additions	1					1
Deductions						
0093 Scholarships Awarded	50					50
0094 Other Deductions	11,725					11,725
Change In Net Position	(\$11,774)					(\$11,774)
0006 Net Position – Beginning of Fiscal Year	114,638					114,638
0007 Net Position Held in Trust for Pension Benefits						
Net Position - End of Fiscal Year	\$102,864					\$102,864

	<u>Revenue Reported In Current Year</u>	<u>Current Year Tax Accrual</u>	<u>Prior Year Tax Accrual</u>	<u>Taxes Collected In Current Year</u>
<u>Revenue from Local Sources</u>				
6111 Current Real Estate Taxes	68,591,688.21			68,591,688.21
6112 Interim Real Estate Taxes	1,047,516.64			1,047,516.64
6113 Public Utility Realty Taxes	84,433.28			84,433.28
6114 Payments in Lieu of Current Taxes - State / Local	303,196.28			303,196.28
6149 Current Act 511 Taxes, Other Flat Rate Assessments	143,717.52			143,717.52
6151 Current Act 511 Earned Income Taxes	9,938,335.86			9,938,335.86
6153 Current Act 511 Real Estate Transfer Taxes	2,192,663.25			2,192,663.25
6411 Delinquent Real Estate Taxes	924,272.14			924,272.14
6431 Delinquent Act 1 Earned Income Taxes	219,440.07			219,440.07
6440 Delinquent Local Enabling Taxes - Flat Rate Assessments	48,248.96			48,248.96
6500 Earnings on Investments	247,330.08			
6700 Revenues from LEA Activities	481,057.21			
6831 Federal Revenue Received from Other Pennsylvania Public LEAs	504,149.97			
6832 Federal IDEA Revenue Received as Pass Through	1,436,616.00			
6910 Rentals	96,843.70			
6942 Summer School Tuition	81,633.96			
6944 Receipts from Other LEAs in Pennsylvania - Education	1,755,495.00			
6991 Refunds of a Prior Year Expenditure	209,292.13			
6999 Other Revenues Not Specified Above	144,572.17			
TOTAL Revenue from Local Sources	\$88,450,502.43			\$83,493,512.21

**Revenue Reported
In Current Year**

Revenue from State Sources

7110 Basic Education Funding	13,818,585.75		
7160 Tuition for Orphans Subsidy	80,030.07		
7271 Special Education funds for School-Aged Pupils	3,531,999.31		
7311 Pupil Transportation Subsidy	3,032,456.11		
7312 Nonpublic and Charter School Pupil Transportation Subsidy	334,180.00		
7320 Rental and Sinking Fund Payments / Building Reimbursement Subsidy	2,479,512.20		
7330 Health Services (Medical, Dental, Nurse, Act 25)	151,508.88		
7340 State Property Tax Reduction Allocation	1,217,621.68		
7360 Safe Schools	30,000.00		
7505 Ready to Learn Block Grant	684,267.00		
7599 Other State Revenue Not Listed Elsewhere in the 7000 Series	3,576.65		
7810 State Share of Social Security and Medicare Taxes	1,892,622.17		
7820 State Share of Retirement Contributions	7,603,889.96		
TOTAL Revenue from State Sources	\$34,860,249.78		

**Revenue Reported
In Current Year**

Revenue from Federal Sources

8190 Other Unrestricted Federal Grants-in-Aid Direct from the Federal Government	71,816.34		
8810 School-Based Access Medicaid Reimbursement Program (SBAP) Reimbursements (Access)	369,500.00		
8820 Medical Assistance Reimbursement for Administrative Claiming (Quarterly) Program	3,957.25		
TOTAL Revenue from Federal Sources	\$445,273.59		
TOTAL FROM ALL SOURCES	\$123,756,025.80		\$83,493,512.21

Revenue from Local Sources	88,450,502.43
Revenue from State Sources	34,860,249.78
Revenue from Federal Sources	445,273.59
Other Financing Sources	
TOTAL FROM ALL SOURCES	\$123,756,025.80

LEA : 104107903 Seneca Valley SD

Printed 4/26/2018 10:57:19 AM

General Fund (10)

	<u>Total</u>
1000 Instruction	
100 Personnel Services – Salaries	
100 Personnel Services – Salaries	40,259,709.78
Total Personnel Services – Salaries	\$40,259,709.78
200 Personnel Services – Employee Benefits	
210 Group Insurance – Contracted Provider	9,411,343.01
220 Social Security Contributions	3,048,153.37
230 PSERS Retirement Contributions	11,852,757.13
250 Unemployment Compensation	23,836.27
260 Workers’ Compensation	192,379.60
Total Personnel Services – Employee Benefits	\$24,528,469.38
300 Purchased Professional and Technical Services	
322 Professional Educational Services – Ius	1,211,404.88
324 Professional Educational Services – Employee Training and Development Services	48,746.31
329 Professional Educational Services – Other	427,300.81
330 Other Professional Services	273,824.53
390 Other Purchased Professional and Technical Services	1,050.00
Total Purchased Professional and Technical Services	\$1,962,326.53
400 Purchased Property Services	
430 Repairs and Maintenance Services	62,241.48
440 Rentals	372,023.27
Total Purchased Property Services	\$434,264.75
500 Other Purchased Services	
510 Student Transportation Services	17,665.02
561 Tuition To Other School Districts Within the State	133,068.97
562 Tuition To Pennsylvania Charter Schools	1,511,318.89
563 Tuition To Nonpublic Schools	472,151.44
564 Tuition To Career and Technology Centers	544,843.06
567 Tuition To Approved Private Schools (APS) and PA Chartered Schools for the Deaf and Blind	1,355,571.40
568 Tuition To Private Residential Rehabilitative Institutions (PRRI) [In-State] and Detention Centers	11,673.58
580 Travel	14,349.13
594 IU Payment By Withholding for Institutionalized Children’s Programs – Special Classes	1,011.77
Total Other Purchased Services	\$4,061,653.26
600 Supplies	
610 General Supplies	580,607.97
620 Energy	626.16
640 Books and Periodicals	1,777,927.87
Total Supplies	\$2,359,162.00
700 Property	
752 Capital Equipment – Original and Additional	125,920.96
758 Capitalized Technology Software - Original	3,319.00
762 Capitalized Equipment - Replacement	6,263.04
Total Property	\$135,503.00

LEA : 104107903 Seneca Valley SD

Printed 4/26/2018 10:57:19 AM

General Fund (10)

1000 Instruction

Total

800 Other Objects

810 Dues and Fees

3,667.77

890 Miscellaneous Expenditures

(36.42)

Total Other Objects

\$3,631.35

Total 1000 Instruction

\$73,744,720.05

LEA : 104107903 Seneca Valley SD

Printed 4/26/2018 10:57:19 AM

Page - 3 of 22

General Fund (10)**1100 Regular Programs – Elementary / Secondary**

	<u>Elementary</u>	<u>Secondary</u>	<u>Federal</u>	<u>Total</u>
100 Personnel Services – Salaries				
100 Personnel Services – Salaries	14,476,512.33	14,807,512.09	386,378.18	29,670,402.60
Total Personnel Services – Salaries	\$14,476,512.33	\$14,807,512.09	\$386,378.18	\$29,670,402.60
200 Personnel Services – Employee Benefits				
210 Group Insurance – Contracted Provider	3,493,319.11	3,555,049.80	70,154.01	7,118,522.92
220 Social Security Contributions	1,110,992.07	1,125,202.34	9,907.23	2,246,101.64
230 PSERS Retirement Contributions	4,316,778.70	4,400,140.25	36,376.85	8,753,295.80
250 Unemployment Compensation	9,679.58	7,711.27	81.80	17,472.65
260 Workers' Compensation	60,488.94	70,996.55	1,251.90	132,737.39
Total Personnel Services – Employee Benefits	\$8,991,258.40	\$9,159,100.21	\$117,771.79	\$18,268,130.40
300 Purchased Professional and Technical Services				
322 Professional Educational Services – lus	393,768.04			393,768.04
324 Professional Educational Services – Employee Training and Development Services	645.75	45,321.68		45,967.43
329 Professional Educational Services – Other	1,194.40	72,354.52		73,548.92
330 Other Professional Services	31,930.42	37,692.50		69,622.92
390 Other Purchased Professional and Technical Services		1,050.00		1,050.00
Total Purchased Professional and Technical Services	\$427,538.61	\$156,418.70		\$583,957.31
400 Purchased Property Services				
430 Repairs and Maintenance Services	27,470.41	34,199.98		61,670.39
440 Rentals	171,119.82	200,903.45		372,023.27
Total Purchased Property Services	\$198,590.23	\$235,103.43		\$433,693.66
500 Other Purchased Services				
510 Student Transportation Services	10,373.30	247.50		10,620.80
562 Tuition To Pennsylvania Charter Schools	132,851.87	765,025.01		897,876.88
580 Travel	8,558.55	414.39		8,972.94
Total Other Purchased Services	\$151,783.72	\$765,686.90		\$917,470.62
600 Supplies				
610 General Supplies	281,132.80	214,937.90		496,070.70
640 Books and Periodicals	562,499.37	1,207,993.69		1,770,493.06
Total Supplies	\$843,632.17	\$1,422,931.59		\$2,266,563.76
700 Property				
752 Capital Equipment – Original and Additional	5,112.53	115,341.88		120,454.41
758 Capitalized Technology Software - Original		2,500.00		2,500.00
762 Capitalized Equipment - Replacement	5,400.42			5,400.42
Total Property	\$10,512.95	\$117,841.88		\$128,354.83
800 Other Objects				
810 Dues and Fees		252.77		252.77
890 Miscellaneous Expenditures	(1,040.42)	1,004.00		(36.42)
Total Other Objects	(\$1,040.42)	\$1,256.77		\$216.35
Total 1100 Regular Programs – Elementary / Secondary	\$25,098,787.99	\$26,665,851.57	\$504,149.97	\$52,268,789.53

LEA : 104107903 Seneca Valley SD

Printed 4/26/2018 10:57:19 AM

Page - 4 of 22

General Fund (10)**1110 Regular Programs**

	<u>Elementary</u>	<u>Secondary</u>	<u>Federal</u>	<u>Total</u>
100 Personnel Services – Salaries				
100 Personnel Services – Salaries	14,476,512.33	14,807,512.09		29,284,024.42
Total Personnel Services – Salaries	\$14,476,512.33	\$14,807,512.09		\$29,284,024.42
200 Personnel Services – Employee Benefits				
210 Group Insurance – Contracted Provider	3,493,319.11	3,555,049.80		7,048,368.91
220 Social Security Contributions	1,110,992.07	1,125,202.34		2,236,194.41
230 PSERS Retirement Contributions	4,316,778.70	4,400,140.25		8,716,918.95
250 Unemployment Compensation	9,679.58	7,711.27		17,390.85
260 Workers' Compensation	60,488.94	70,996.55		131,485.49
Total Personnel Services – Employee Benefits	\$8,991,258.40	\$9,159,100.21		\$18,150,358.61
300 Purchased Professional and Technical Services				
322 Professional Educational Services – lus	393,768.04			393,768.04
324 Professional Educational Services – Employee Training and Development Services	645.75	45,321.68		45,967.43
329 Professional Educational Services – Other	1,194.40	72,354.52		73,548.92
330 Other Professional Services	31,930.42	37,692.50		69,622.92
390 Other Purchased Professional and Technical Services		1,050.00		1,050.00
Total Purchased Professional and Technical Services	\$427,538.61	\$156,418.70		\$583,957.31
400 Purchased Property Services				
430 Repairs and Maintenance Services	27,470.41	34,199.98		61,670.39
440 Rentals	171,119.82	200,903.45		372,023.27
Total Purchased Property Services	\$198,590.23	\$235,103.43		\$433,693.66
500 Other Purchased Services				
510 Student Transportation Services	10,373.30	247.50		10,620.80
562 Tuition To Pennsylvania Charter Schools	132,851.87	765,025.01		897,876.88
580 Travel	8,558.55	414.39		8,972.94
Total Other Purchased Services	\$151,783.72	\$765,686.90		\$917,470.62
600 Supplies				
610 General Supplies	281,132.80	214,937.90		496,070.70
640 Books and Periodicals	562,499.37	1,207,993.69		1,770,493.06
Total Supplies	\$843,632.17	\$1,422,931.59		\$2,266,563.76
700 Property				
752 Capital Equipment – Original and Additional	5,112.53	115,341.88		120,454.41
758 Capitalized Technology Software - Original		2,500.00		2,500.00
762 Capitalized Equipment - Replacement	5,400.42			5,400.42
Total Property	\$10,512.95	\$117,841.88		\$128,354.83
800 Other Objects				
810 Dues and Fees		252.77		252.77
890 Miscellaneous Expenditures	(1,040.42)	1,004.00		(36.42)
Total Other Objects	(\$1,040.42)	\$1,256.77		\$216.35
Total 1110 Regular Programs	\$25,098,787.99	\$26,665,851.57		\$51,764,639.56

LEA : 104107903 Seneca Valley SD

Printed 4/26/2018 10:57:19 AM

General Fund (10)

1190 Federally-Funded Regular Programs

100 Personnel Services – Salaries

100 Personnel Services – Salaries

Total Personnel Services – Salaries

200 Personnel Services – Employee Benefits

210 Group Insurance – Contracted Provider

220 Social Security Contributions

230 PSERS Retirement Contributions

250 Unemployment Compensation

260 Workers' Compensation

Total Personnel Services – Employee Benefits

Total 1190 Federally-Funded Regular Programs

Elementary

Secondary

Federal

Total

386,378.18

386,378.18

\$386,378.18

\$386,378.18

70,154.01

70,154.01

9,907.23

9,907.23

36,376.85

36,376.85

81.80

81.80

1,251.90

1,251.90

\$117,771.79

\$117,771.79

\$504,149.97

\$504,149.97

LEA : 104107903 Seneca Valley SD

Printed 4/26/2018 10:57:19 AM

General Fund (10)

1200 Special Programs – Elementary / Secondary

	<u>Elementary</u>	<u>Secondary</u>	<u>Federal</u>	<u>Total</u>
100 Personnel Services – Salaries				
100 Personnel Services – Salaries	4,366,361.74	4,022,618.35	411,408.40	8,800,388.49
Total Personnel Services – Salaries	\$4,366,361.74	\$4,022,618.35	\$411,408.40	\$8,800,388.49
200 Personnel Services – Employee Benefits				
210 Group Insurance – Contracted Provider	832,697.19	927,507.71	93,729.66	1,853,934.56
220 Social Security Contributions	325,261.41	295,980.32	44,348.75	665,590.48
230 PSERS Retirement Contributions	1,274,119.41	1,204,022.47	88,132.90	2,566,274.78
250 Unemployment Compensation	3,484.65	2,410.76	142.70	6,038.11
260 Workers' Compensation	31,310.22	19,741.28	1,703.76	52,755.26
Total Personnel Services – Employee Benefits	\$2,466,872.88	\$2,449,662.54	\$228,057.77	\$5,144,593.19
300 Purchased Professional and Technical Services				
322 Professional Educational Services – lus	2,043.34	115,929.58	699,663.92	817,636.84
324 Professional Educational Services – Employee Training and Development Services	1,802.68	976.20		2,778.88
329 Professional Educational Services – Other	185,495.79	38,406.16	129,849.94	353,751.89
330 Other Professional Services	82,257.38	100,364.23	3,220.00	185,841.61
Total Purchased Professional and Technical Services	\$271,599.19	\$255,676.17	\$832,733.86	\$1,360,009.22
500 Other Purchased Services				
510 Student Transportation Services	975.00	6,069.22		7,044.22
561 Tuition To Other School Districts Within the State	23,500.00	104,966.58		128,466.58
562 Tuition To Pennsylvania Charter Schools	49,866.93	242,378.54	321,196.54	613,442.01
563 Tuition To Nonpublic Schools	116,080.31	346,928.63		463,008.94
567 Tuition To Approved Private Schools (APS) and PA Chartered Schools for the Deaf and Blind	1,015,972.35	339,599.05		1,355,571.40
568 Tuition To Private Residential Rehabilitative Institutions (PRRI) [In-State] and Detention Centers		6,818.84		6,818.84
580 Travel	2,472.64	2,903.55		5,376.19
594 IU Payment By Withholding for Institutionalized Children's Programs – Special Classes	1,011.77			1,011.77
Total Other Purchased Services	\$1,209,879.00	\$1,049,664.41	\$321,196.54	\$2,580,739.95
600 Supplies				
610 General Supplies	17,641.94	15,477.95	2,080.00	35,199.89
620 Energy		626.16		626.16
640 Books and Periodicals	1,398.22	6,036.59		7,434.81
Total Supplies	\$19,040.16	\$22,140.70	\$2,080.00	\$43,260.86
700 Property				
752 Capital Equipment – Original and Additional	1,655.00	1,066.65		2,721.65
758 Capitalized Technology Software - Original		819.00		819.00
762 Capitalized Equipment - Replacement	862.62			862.62
Total Property	\$2,517.62	\$1,885.65		\$4,403.27
800 Other Objects				
810 Dues and Fees	225.00	3,190.00		3,415.00
Total Other Objects	\$225.00	\$3,190.00		\$3,415.00
Total 1200 Special Programs – Elementary / Secondary	\$8,336,495.59	\$7,804,837.82	\$1,795,476.57	\$17,936,809.98

General Fund (10)

1210 Life Skills Support

	<u>Elementary</u>	<u>Secondary</u>	<u>Federal</u>	<u>Total</u>
100 Personnel Services – Salaries				
100 Personnel Services – Salaries	106,861.09	188,226.80	16,065.19	311,153.08
Total Personnel Services – Salaries	\$106,861.09	\$188,226.80	\$16,065.19	\$311,153.08
200 Personnel Services – Employee Benefits				
210 Group Insurance – Contracted Provider	26,706.66	29,788.20	(23.98)	56,470.88
220 Social Security Contributions	8,086.57	14,304.34	1,228.91	23,619.82
230 PSERS Retirement Contributions	32,090.36	56,524.41	4,824.38	93,439.15
250 Unemployment Compensation	29.10	56.63	9.30	95.03
260 Workers' Compensation	88.09	64.35		152.44
Total Personnel Services – Employee Benefits	\$67,000.78	\$100,737.93	\$6,038.61	\$173,777.32
300 Purchased Professional and Technical Services				
322 Professional Educational Services – lus		86,180.00	71,481.70	157,661.70
329 Professional Educational Services – Other		(2,575.00)	5,200.00	2,625.00
Total Purchased Professional and Technical Services		\$83,605.00	\$76,681.70	\$160,286.70
500 Other Purchased Services				
561 Tuition To Other School Districts Within the State		85,650.80		85,650.80
563 Tuition To Nonpublic Schools		56,472.05		56,472.05
567 Tuition To Approved Private Schools (APS) and PA Chartered Schools for the Deaf and Blind		62,899.20		62,899.20
Total Other Purchased Services		\$205,022.05		\$205,022.05
600 Supplies				
610 General Supplies	29.10	1,269.85		1,298.95
620 Energy		626.16		626.16
Total Supplies	\$29.10	\$1,896.01		\$1,925.11
700 Property				
752 Capital Equipment – Original and Additional		841.65		841.65
Total Property		\$841.65		\$841.65
Total 1210 Life Skills Support	\$173,890.97	\$580,329.44	\$98,785.50	\$853,005.91

General Fund (10)

	<u>Elementary</u>	<u>Secondary</u>	<u>Federal</u>	<u>Total</u>
1220 Sensory Support				
100 Personnel Services – Salaries				
100 Personnel Services – Salaries	831,906.00	204,868.86		1,036,774.86
Total Personnel Services – Salaries	\$831,906.00	\$204,868.86		\$1,036,774.86
200 Personnel Services – Employee Benefits				
210 Group Insurance – Contracted Provider	198,690.30	46,858.26		245,548.56
220 Social Security Contributions	63,001.19	15,509.95		78,511.14
230 PSERS Retirement Contributions	249,634.70	60,995.89		310,630.59
250 Unemployment Compensation	118.11	31.18		149.29
260 Workers' Compensation	1,918.23	519.63		2,437.86
Total Personnel Services – Employee Benefits	\$513,362.53	\$123,914.91		\$637,277.44
300 Purchased Professional and Technical Services				
322 Professional Educational Services – lus	(57,554.63)		362,718.15	305,163.52
324 Professional Educational Services – Employee Training and Development Services	80.42	50.00		130.42
329 Professional Educational Services – Other		8,114.00	32,229.67	40,343.67
Total Purchased Professional and Technical Services	(\$57,474.21)	\$8,164.00	\$394,947.82	\$345,637.61
500 Other Purchased Services				
567 Tuition To Approved Private Schools (APS) and PA Chartered Schools for the Deaf and Blind	28,200.00	22,802.43		51,002.43
580 Travel	300.00	68.41		368.41
Total Other Purchased Services	\$28,500.00	\$22,870.84		\$51,370.84
600 Supplies				
610 General Supplies	310.45	1,911.98		2,222.43
Total Supplies	\$310.45	\$1,911.98		\$2,222.43
700 Property				
762 Capitalized Equipment - Replacement	492.90			492.90
Total Property	\$492.90			\$492.90
Total 1220 Sensory Support	\$1,317,097.67	\$361,730.59	\$394,947.82	\$2,073,776.08

General Fund (10)

	<u>Elementary</u>	<u>Secondary</u>	<u>Federal</u>	<u>Total</u>
1230 Emotional Support				
100 Personnel Services – Salaries				
100 Personnel Services – Salaries	432,066.26	170,855.96	274,749.99	877,672.21
Total Personnel Services – Salaries	\$432,066.26	\$170,855.96	\$274,749.99	\$877,672.21
200 Personnel Services – Employee Benefits				
210 Group Insurance – Contracted Provider	71,996.84	18,711.55	87,243.96	177,952.35
220 Social Security Contributions	27,815.73	13,002.42	26,647.33	67,465.48
230 PSERS Retirement Contributions	126,293.81	43,121.79	63,040.27	232,455.87
250 Unemployment Compensation	96.24	42.76	52.92	191.92
260 Workers' Compensation	1,007.62	600.47	985.91	2,594.00
Total Personnel Services – Employee Benefits	\$227,210.24	\$75,478.99	\$177,970.39	\$480,659.62
300 Purchased Professional and Technical Services				
322 Professional Educational Services – lus	18,680.00	29,073.60	13,266.67	61,020.27
329 Professional Educational Services – Other	6,620.00	17,840.87		24,460.87
330 Other Professional Services	840.00	1,709.68		2,549.68
Total Purchased Professional and Technical Services	\$26,140.00	\$48,624.15	\$13,266.67	\$88,030.82
500 Other Purchased Services				
561 Tuition To Other School Districts Within the State		2,344.93		2,344.93
563 Tuition To Nonpublic Schools	116,080.31	290,456.58		406,536.89
567 Tuition To Approved Private Schools (APS) and PA Chartered Schools for the Deaf and Blind	11,468.64	234,507.87		245,976.51
568 Tuition To Private Residential Rehabilitative Institutions (PRRI) [In-State] and Detention Centers		258.84		258.84
580 Travel	633.30	16.20		649.50
Total Other Purchased Services	\$128,182.25	\$527,584.42		\$655,766.67
600 Supplies				
610 General Supplies	561.86	718.84		1,280.70
640 Books and Periodicals	71.00			71.00
Total Supplies	\$632.86	\$718.84		\$1,351.70
700 Property				
762 Capitalized Equipment - Replacement	369.72			369.72
Total Property	\$369.72			\$369.72
Total 1230 Emotional Support	\$814,601.33	\$823,262.36	\$465,987.05	\$2,103,850.74

General Fund (10)

1240 Academic Support

	<u>Elementary</u>	<u>Secondary</u>	<u>Federal</u>	<u>Total</u>
100 Personnel Services – Salaries				
100 Personnel Services – Salaries	2,995,528.39	3,316,328.01	78,057.15	6,389,913.55
Total Personnel Services – Salaries	\$2,995,528.39	\$3,316,328.01	\$78,057.15	\$6,389,913.55
200 Personnel Services – Employee Benefits				
210 Group Insurance – Contracted Provider	535,303.39	805,265.59	4,480.20	1,345,049.18
220 Social Security Contributions	226,357.92	246,036.90	9,980.00	482,374.82
230 PSERS Retirement Contributions	866,100.54	989,226.65	18,901.45	1,874,228.64
250 Unemployment Compensation	3,241.20	2,258.88	61.67	5,561.75
260 Workers' Compensation	28,296.28	18,111.18	316.67	46,724.13
Total Personnel Services – Employee Benefits	\$1,659,299.33	\$2,060,899.20	\$33,739.99	\$3,753,938.52
300 Purchased Professional and Technical Services				
322 Professional Educational Services – lus	520.00	675.98	196,895.00	198,090.98
324 Professional Educational Services – Employee Training and Development Services	1,722.26	926.20		2,648.46
329 Professional Educational Services – Other	3,013.34		44,557.25	47,570.59
330 Other Professional Services	81,417.38	98,654.55		180,071.93
Total Purchased Professional and Technical Services	\$86,672.98	\$100,256.73	\$241,452.25	\$428,381.96
500 Other Purchased Services				
510 Student Transportation Services	975.00	3,759.60		4,734.60
561 Tuition To Other School Districts Within the State	23,500.00	16,970.85		40,470.85
562 Tuition To Pennsylvania Charter Schools	49,866.93	242,378.54	321,196.54	613,442.01
580 Travel	1,539.34	1,582.12		3,121.46
Total Other Purchased Services	\$75,881.27	\$264,691.11	\$321,196.54	\$661,768.92
600 Supplies				
610 General Supplies	16,740.53	11,577.28	2,080.00	30,397.81
640 Books and Periodicals	1,327.22	6,036.59		7,363.81
Total Supplies	\$18,067.75	\$17,613.87	\$2,080.00	\$37,761.62
700 Property				
752 Capital Equipment – Original and Additional	1,655.00	225.00		1,880.00
758 Capitalized Technology Software - Original		819.00		819.00
Total Property	\$1,655.00	\$1,044.00		\$2,699.00
800 Other Objects				
810 Dues and Fees	225.00	3,190.00		3,415.00
Total Other Objects	\$225.00	\$3,190.00		\$3,415.00
Total 1240 Academic Support	\$4,837,329.72	\$5,764,022.92	\$676,525.93	\$11,277,878.57

General Fund (10)

	<u>Elementary</u>	<u>Secondary</u>	<u>Federal</u>	<u>Total</u>
1241 Learning Support – Public				
100 Personnel Services – Salaries				
100 Personnel Services – Salaries	2,400,307.64	2,873,630.78	78,057.15	5,351,995.57
Total Personnel Services – Salaries	\$2,400,307.64	\$2,873,630.78	\$78,057.15	\$5,351,995.57
200 Personnel Services – Employee Benefits				
210 Group Insurance – Contracted Provider	414,608.63	687,793.50	4,480.20	1,106,882.33
220 Social Security Contributions	181,387.65	212,868.98	9,980.00	404,236.63
230 PSERS Retirement Contributions	701,860.92	856,960.51	18,901.45	1,577,722.88
250 Unemployment Compensation	3,141.95	2,203.28	61.67	5,406.90
260 Workers' Compensation	26,109.03	15,915.23	316.67	42,340.93
Total Personnel Services – Employee Benefits	\$1,327,108.18	\$1,775,741.50	\$33,739.99	\$3,136,589.67
300 Purchased Professional and Technical Services				
322 Professional Educational Services – lus	520.00	675.98	196,895.00	198,090.98
324 Professional Educational Services – Employee Training and Development Services	1,650.98	831.20		2,482.18
329 Professional Educational Services – Other	3,013.34		44,557.25	47,570.59
330 Other Professional Services	81,417.38	98,654.55		180,071.93
Total Purchased Professional and Technical Services	\$86,601.70	\$100,161.73	\$241,452.25	\$428,215.68
500 Other Purchased Services				
510 Student Transportation Services	975.00			975.00
561 Tuition To Other School Districts Within the State	23,500.00	16,970.85		40,470.85
562 Tuition To Pennsylvania Charter Schools	49,866.93	242,378.54	321,196.54	613,442.01
580 Travel	1,195.64	1,418.50		2,614.14
Total Other Purchased Services	\$75,537.57	\$260,767.89	\$321,196.54	\$657,502.00
600 Supplies				
610 General Supplies	11,841.65	10,521.35	2,080.00	24,443.00
640 Books and Periodicals	1,327.22	5,075.69		6,402.91
Total Supplies	\$13,168.87	\$15,597.04	\$2,080.00	\$30,845.91
700 Property				
752 Capital Equipment – Original and Additional	1,430.00			1,430.00
758 Capitalized Technology Software - Original		819.00		819.00
Total Property	\$1,430.00	\$819.00		\$2,249.00
800 Other Objects				
810 Dues and Fees	225.00	200.00		425.00
Total Other Objects	\$225.00	\$200.00		\$425.00
Total 1241 Learning Support – Public	\$3,904,378.96	\$5,026,917.94	\$676,525.93	\$9,607,822.83

General Fund (10)

	<u>Elementary</u>	<u>Secondary</u>	<u>Federal</u>	<u>Total</u>
1243 Gifted Support				
100 Personnel Services – Salaries				
100 Personnel Services – Salaries	595,220.75	442,697.23		1,037,917.98
Total Personnel Services – Salaries	\$595,220.75	\$442,697.23		\$1,037,917.98
200 Personnel Services – Employee Benefits				
210 Group Insurance – Contracted Provider	120,694.76	117,472.09		238,166.85
220 Social Security Contributions	44,970.27	33,167.92		78,138.19
230 PSERS Retirement Contributions	164,239.62	132,266.14		296,505.76
250 Unemployment Compensation	99.25	55.60		154.85
260 Workers' Compensation	2,187.25	2,195.95		4,383.20
Total Personnel Services – Employee Benefits	\$332,191.15	\$285,157.70		\$617,348.85
300 Purchased Professional and Technical Services				
324 Professional Educational Services – Employee Training and Development Services	71.28	95.00		166.28
Total Purchased Professional and Technical Services	\$71.28	\$95.00		\$166.28
500 Other Purchased Services				
510 Student Transportation Services		3,759.60		3,759.60
580 Travel	343.70	163.62		507.32
Total Other Purchased Services	\$343.70	\$3,923.22		\$4,266.92
600 Supplies				
610 General Supplies	4,898.88	1,055.93		5,954.81
640 Books and Periodicals		960.90		960.90
Total Supplies	\$4,898.88	\$2,016.83		\$6,915.71
700 Property				
752 Capital Equipment – Original and Additional	225.00	225.00		450.00
Total Property	\$225.00	\$225.00		\$450.00
800 Other Objects				
810 Dues and Fees		2,990.00		2,990.00
Total Other Objects		\$2,990.00		\$2,990.00
Total 1243 Gifted Support	\$932,950.76	\$737,104.98		\$1,670,055.74

General Fund (10)

1270 Multi-Handicapped Support

300 Purchased Professional and Technical Services

322 Professional Educational Services – Ius

329 Professional Educational Services – Other

Total Purchased Professional and Technical Services

500 Other Purchased Services

567 Tuition To Approved Private Schools (APS) and PA Chartered Schools for the Deaf and Blind

Total Other Purchased Services

Total 1270 Multi-Handicapped Support

	<u>Elementary</u>	<u>Secondary</u>	<u>Federal</u>	<u>Total</u>
			55,302.40	55,302.40
			26,223.08	26,223.08
			\$81,525.48	\$81,525.48
	133,385.66	4,304.86		137,690.52
	\$133,385.66	\$4,304.86		\$137,690.52
	\$133,385.66	\$4,304.86	\$81,525.48	\$219,216.00

General Fund (10)

1280 Early Intervention Support

300 Purchased Professional and Technical Services

322 Professional Educational Services – lus

Total Purchased Professional and Technical Services

Total 1280 Early Intervention Support

	<u>Elementary</u>	<u>Secondary</u>	<u>Federal</u>	<u>Total</u>
	40,397.97			40,397.97
	\$40,397.97			\$40,397.97
	\$40,397.97			\$40,397.97

General Fund (10)

1290 Special Programs - Other Support

100 Personnel Services – Salaries

	<u>Elementary</u>	<u>Secondary</u>	<u>Federal</u>	<u>Total</u>
100 Personnel Services – Salaries		142,338.72	42,536.07	184,874.79
Total Personnel Services – Salaries		\$142,338.72	\$42,536.07	\$184,874.79

200 Personnel Services – Employee Benefits

210 Group Insurance – Contracted Provider		26,884.11	2,029.48	28,913.59
220 Social Security Contributions		7,126.71	6,492.51	13,619.22
230 PSERS Retirement Contributions		54,153.73	1,366.80	55,520.53
250 Unemployment Compensation		21.31	18.81	40.12
260 Workers' Compensation		445.65	401.18	846.83
Total Personnel Services – Employee Benefits		\$88,631.51	\$10,308.78	\$98,940.29

300 Purchased Professional and Technical Services

329 Professional Educational Services – Other	175,862.45	15,026.29	21,639.94	212,528.68
330 Other Professional Services			3,220.00	3,220.00
Total Purchased Professional and Technical Services	\$175,862.45	\$15,026.29	\$24,859.94	\$215,748.68

500 Other Purchased Services

510 Student Transportation Services		2,309.62		2,309.62
567 Tuition To Approved Private Schools (APS) and PA Chartered Schools for the Deaf and Blind	842,918.05	15,084.69		858,002.74
568 Tuition To Private Residential Rehabilitative Institutions (PRRI) [In-State] and Detention Centers		6,560.00		6,560.00
580 Travel		1,236.82		1,236.82
594 IU Payment By Withholding for Institutionalized Children's Programs – Special Classes	1,011.77			1,011.77
Total Other Purchased Services		\$843,929.82	\$25,191.13	\$869,120.95

Total 1290 Special Programs - Other Support

	\$1,019,792.27	\$271,187.65	\$77,704.79	\$1,368,684.71
--	-----------------------	---------------------	--------------------	-----------------------

General Fund (10)

1300 Vocational Education

	<u>Elementary</u>	<u>Secondary</u>	<u>Federal</u>	<u>Total</u>
100 Personnel Services – Salaries				
100 Personnel Services – Salaries		1,616,740.61		1,616,740.61
Total Personnel Services – Salaries		\$1,616,740.61		\$1,616,740.61
200 Personnel Services – Employee Benefits				
210 Group Insurance – Contracted Provider		414,409.91		414,409.91
220 Social Security Contributions		123,457.18		123,457.18
230 PSERS Retirement Contributions		482,019.40		482,019.40
250 Unemployment Compensation		306.95		306.95
260 Workers' Compensation		6,447.47		6,447.47
Total Personnel Services – Employee Benefits		\$1,026,640.91		\$1,026,640.91
300 Purchased Professional and Technical Services				
330 Other Professional Services		18,360.00		18,360.00
Total Purchased Professional and Technical Services		\$18,360.00		\$18,360.00
400 Purchased Property Services				
430 Repairs and Maintenance Services		571.09		571.09
Total Purchased Property Services		\$571.09		\$571.09
500 Other Purchased Services				
564 Tuition To Career and Technology Centers		544,843.06		544,843.06
Total Other Purchased Services		\$544,843.06		\$544,843.06
600 Supplies				
610 General Supplies		49,337.38		49,337.38
Total Supplies		\$49,337.38		\$49,337.38
700 Property				
752 Capital Equipment – Original and Additional		2,744.90		2,744.90
Total Property		\$2,744.90		\$2,744.90
Total 1300 Vocational Education		\$3,259,237.95		\$3,259,237.95

General Fund (10)

	<u>Elementary</u>	<u>Secondary</u>	<u>Federal</u>	<u>Total</u>
1400 Other Instructional Programs – Elementary / Secondary				
100 Personnel Services – Salaries				
100 Personnel Services – Salaries	9,043.82	163,134.26		172,178.08
Total Personnel Services – Salaries	\$9,043.82	\$163,134.26		\$172,178.08
200 Personnel Services – Employee Benefits				
210 Group Insurance – Contracted Provider		24,475.62		24,475.62
220 Social Security Contributions	689.18	12,314.89		13,004.07
230 PSERS Retirement Contributions	2,177.93	48,989.22		51,167.15
250 Unemployment Compensation	2.96	15.60		18.56
260 Workers' Compensation	0.75	438.73		439.48
Total Personnel Services – Employee Benefits	\$2,870.82	\$86,234.06		\$89,104.88
500 Other Purchased Services				
561 Tuition To Other School Districts Within the State		4,602.39		4,602.39
563 Tuition To Nonpublic Schools		9,142.50		9,142.50
568 Tuition To Private Residential Rehabilitative Institutions (PRRI) [In-State] and Detention Centers		4,854.74		4,854.74
Total Other Purchased Services		\$18,599.63		\$18,599.63
Total 1400 Other Instructional Programs – Elementary / Secondary	\$11,914.64	\$267,967.95		\$279,882.59

General Fund (10)

1420 Summer School

100 Personnel Services – Salaries

	<u>Elementary</u>	<u>Secondary</u>	<u>Federal</u>	<u>Total</u>
100 Personnel Services – Salaries		53,793.42		53,793.42
Total Personnel Services – Salaries		\$53,793.42		\$53,793.42
200 Personnel Services – Employee Benefits				
220 Social Security Contributions		4,114.14		4,114.14
230 PSERS Retirement Contributions		16,154.18		16,154.18
250 Unemployment Compensation		0.19		0.19
260 Workers' Compensation		49.53		49.53
Total Personnel Services – Employee Benefits		\$20,318.04		\$20,318.04
Total 1420 Summer School		\$74,111.46		\$74,111.46

Total Personnel Services – Salaries

200 Personnel Services – Employee Benefits

General Fund (10)

	<u>Elementary</u>	<u>Secondary</u>	<u>Federal</u>	<u>Total</u>
1430 Homebound Instruction				
100 Personnel Services – Salaries				
100 Personnel Services – Salaries	9,043.82	14,554.80		23,598.62
Total Personnel Services – Salaries	\$9,043.82	\$14,554.80		\$23,598.62
200 Personnel Services – Employee Benefits				
220 Social Security Contributions	689.18	1,107.51		1,796.69
230 PSERS Retirement Contributions	2,177.93	4,370.78		6,548.71
250 Unemployment Compensation	2.96	3.60		6.56
260 Workers' Compensation	0.75	17.66		18.41
Total Personnel Services – Employee Benefits	\$2,870.82	\$5,499.55		\$8,370.37
Total 1430 Homebound Instruction	\$11,914.64	\$20,054.35		\$31,968.99

General Fund (10)

1440 Alternative Regular Education Programs

100 Personnel Services – Salaries

100 Personnel Services – Salaries

Total Personnel Services – Salaries

200 Personnel Services – Employee Benefits

210 Group Insurance – Contracted Provider

220 Social Security Contributions

230 PSERS Retirement Contributions

250 Unemployment Compensation

260 Workers' Compensation

Total Personnel Services – Employee Benefits

500 Other Purchased Services

561 Tuition To Other School Districts Within the State

563 Tuition To Nonpublic Schools

568 Tuition To Private Residential Rehabilitative Institutions (PRRI) [In-State] and Detention Centers

Total Other Purchased Services

Total 1440 Alternative Regular Education Programs

	<u>Elementary</u>	<u>Secondary</u>	<u>Federal</u>	<u>Total</u>
		94,786.04		94,786.04
		\$94,786.04		\$94,786.04
		24,475.62		24,475.62
		7,093.24		7,093.24
		28,464.26		28,464.26
		11.81		11.81
		371.54		371.54
		\$60,416.47		\$60,416.47
		4,602.39		4,602.39
		9,142.50		9,142.50
		4,854.74		4,854.74
		\$18,599.63		\$18,599.63
		\$173,802.14		\$173,802.14

LEA : 104107903 Seneca Valley SD

Printed 4/26/2018 10:57:19 AM

General Fund (10)

1441 Adjudicated / Court-Placed Programs

Elementary

Secondary

Federal

Total

500 Other Purchased Services

561 Tuition To Other School Districts Within the State

4,602.39

4,602.39

568 Tuition To Private Residential Rehabilitative Institutions (PRRI) [In-State] and Detention Centers

4,854.74

4,854.74

Total Other Purchased Services

\$9,457.13

\$9,457.13

Total 1441 Adjudicated / Court-Placed Programs

\$9,457.13

\$9,457.13

General Fund (10)

1442 Alternative Education Programs

100 Personnel Services – Salaries

100 Personnel Services – Salaries

Total Personnel Services – Salaries

200 Personnel Services – Employee Benefits

210 Group Insurance – Contracted Provider

220 Social Security Contributions

230 PSERS Retirement Contributions

250 Unemployment Compensation

260 Workers' Compensation

Total Personnel Services – Employee Benefits

500 Other Purchased Services

563 Tuition To Nonpublic Schools

Total Other Purchased Services

Total 1442 Alternative Education Programs

	<u>Elementary</u>	<u>Secondary</u>	<u>Federal</u>	<u>Total</u>
		94,786.04		94,786.04
		\$94,786.04		\$94,786.04
		24,475.62		24,475.62
		7,093.24		7,093.24
		28,464.26		28,464.26
		11.81		11.81
		371.54		371.54
		\$60,416.47		\$60,416.47
		9,142.50		9,142.50
		\$9,142.50		\$9,142.50
		\$164,345.01		\$164,345.01

General Fund (10)

2000 Support Services

Total

100 Personnel Services – Salaries

100 Personnel Services – Salaries 10,173,621.89

Total Personnel Services – Salaries \$10,173,621.89

200 Personnel Services – Employee Benefits

210 Group Insurance – Contracted Provider 2,827,020.95

220 Social Security Contributions 749,391.06

230 PSERS Retirement Contributions 2,977,264.47

240 Tuition Reimbursement 260,522.50

250 Unemployment Compensation 1,870.60

260 Workers' Compensation 36,975.27

Total Personnel Services – Employee Benefits \$6,853,044.85

300 Purchased Professional and Technical Services

310 Official / Administrative Services 43,853.28

324 Professional Educational Services – Employee Training and Development Services 39,919.78

329 Professional Educational Services – Other 892,387.39

330 Other Professional Services 232,778.48

340 Technical Services 105,696.20

390 Other Purchased Professional and Technical Services 13,174.52

Total Purchased Professional and Technical Services \$1,327,809.65

400 Purchased Property Services

410 Cleaning Services 1,783,743.11

420 Utility Services 790,551.40

430 Repairs and Maintenance Services 525,607.95

440 Rentals 40,811.43

490 Other Purchased Property Services 6,887.36

Total Purchased Property Services \$3,147,601.25

500 Other Purchased Services

513 Contracted Carriers 7,345,350.69

516 Student Transportation Services From the IU 10,482.47

520 Insurance – General 73,778.75

521 Fire Insurance 142,807.00

522 Automotive Liability Insurance 8,065.00

523 General Property and Liability Insurance 9,681.00

530 Communications 179,035.17

549 Other Advertising/Public Relations 25,447.94

550 Printing and Binding 60,687.63

580 Travel 20,176.15

595 IU Payments By Withholding 133,325.83

Total Other Purchased Services \$8,008,837.63

600 Supplies

610 General Supplies 690,066.64

620 Energy 193,625.39

640 Books and Periodicals 364,542.72

LEA : 104107903 Seneca Valley SD

Printed 4/26/2018 10:57:21 AM

General Fund (10)

2000 Support Services

	<u>Total</u>
Total Supplies	\$1,248,234.75
700 Property	
752 Capital Equipment – Original and Additional	22,512.94
758 Capitalized Technology Software - Original	40,195.23
762 Capitalized Equipment - Replacement	223,693.05
766 Capitalized Technology Hardware and Equipment – Replacement	631,531.16
768 Capitalized Technology Software - Replacement	313,737.51
Total Property	\$1,231,669.89
800 Other Objects	
810 Dues and Fees	57,049.01
820 Claims and Judgments Against the LEA	1,895.00
890 Miscellaneous Expenditures	6,256.97
Total Other Objects	\$65,200.98
Total 2000 Support Services	\$32,056,020.89

General Fund (10)

	<u>Elementary</u>	<u>Secondary</u>	<u>Federal</u>	<u>Total</u>
2100 Support Services – Students				
100 Personnel Services – Salaries				
100 Personnel Services – Salaries	764,911.47	1,152,164.38	13,548.24	1,967,571.51
Total Personnel Services – Salaries	\$764,911.47	\$1,152,164.38	\$13,548.24	\$1,967,571.51
200 Personnel Services – Employee Benefits				
210 Group Insurance – Contracted Provider	160,972.57	331,005.50		498,728.91
220 Social Security Contributions	58,392.16	86,037.55	1,036.44	148,238.22
230 PSERS Retirement Contributions	229,127.68	337,013.75		576,997.56
250 Unemployment Compensation	132.39	177.99	12.00	332.89
260 Workers' Compensation	1,924.30	4,517.96		6,626.64
Total Personnel Services – Employee Benefits	\$450,549.10	\$758,752.75	\$1,048.44	\$1,230,924.22
300 Purchased Professional and Technical Services				
324 Professional Educational Services – Employee Training and Development Services	2,067.63	2,016.19		4,083.82
329 Professional Educational Services – Other	25,692.26	21,090.61		46,782.87
330 Other Professional Services		1,875.00		1,875.00
Total Purchased Professional and Technical Services	\$27,759.89	\$24,981.80		\$52,741.69
500 Other Purchased Services				
580 Travel	1,021.61	1,032.91		2,054.52
Total Other Purchased Services	\$1,021.61	\$1,032.91		\$2,054.52
600 Supplies				
610 General Supplies	13,162.18	7,292.15		20,454.33
640 Books and Periodicals	60.00	137.46		197.46
Total Supplies	\$13,222.18	\$7,429.61		\$20,651.79
700 Property				
762 Capitalized Equipment - Replacement		677.81		677.81
Total Property		\$677.81		\$677.81
800 Other Objects				
810 Dues and Fees	749.00	774.00		1,523.00
Total Other Objects	\$749.00	\$774.00		\$1,523.00
Total 2100 Support Services – Students	\$1,258,213.25	\$1,945,813.26	\$14,596.68	\$3,276,144.54

General Fund (10)

2120 Guidance Services

	<u>Elementary</u>	<u>Secondary</u>	<u>Federal</u>	<u>Total</u>
100 Personnel Services – Salaries				
100 Personnel Services – Salaries	431,788.83	956,073.75		1,387,862.58
Total Personnel Services – Salaries	\$431,788.83	\$956,073.75		\$1,387,862.58
200 Personnel Services – Employee Benefits				
210 Group Insurance – Contracted Provider	82,778.40	283,288.54		366,066.94
220 Social Security Contributions	32,882.59	71,826.23		104,708.82
230 PSERS Retirement Contributions	129,065.69	283,324.26		412,389.95
250 Unemployment Compensation	74.65	151.22		225.87
260 Workers' Compensation	799.18	3,595.94		4,395.12
Total Personnel Services – Employee Benefits	\$245,600.51	\$642,186.19		\$887,786.70
300 Purchased Professional and Technical Services				
324 Professional Educational Services – Employee Training and Development Services	1,274.63	1,856.19		3,130.82
329 Professional Educational Services – Other		1,544.48		1,544.48
330 Other Professional Services		1,875.00		1,875.00
Total Purchased Professional and Technical Services	\$1,274.63	\$5,275.67		\$6,550.30
500 Other Purchased Services				
580 Travel		717.92		717.92
Total Other Purchased Services		\$717.92		\$717.92
600 Supplies				
610 General Supplies	3,735.20	(688.86)		3,046.34
640 Books and Periodicals		137.46		137.46
Total Supplies	\$3,735.20	(\$551.40)		\$3,183.80
800 Other Objects				
810 Dues and Fees		129.00		129.00
Total Other Objects		\$129.00		\$129.00
Total 2120 Guidance Services	\$682,399.17	\$1,603,831.13		\$2,286,230.30

General Fund (10)

	<u>Elementary</u>	<u>Secondary</u>	<u>Federal</u>	<u>Total</u>
2140 Psychological Services				
100 Personnel Services – Salaries				
100 Personnel Services – Salaries	333,122.64	196,090.63	13,548.24	542,761.51
Total Personnel Services – Salaries	\$333,122.64	\$196,090.63	\$13,548.24	\$542,761.51
200 Personnel Services – Employee Benefits				
210 Group Insurance – Contracted Provider	78,194.17	47,716.96		125,911.13
220 Social Security Contributions	25,509.57	14,211.32	1,036.44	40,757.33
230 PSERS Retirement Contributions	100,061.99	53,689.49		153,751.48
250 Unemployment Compensation	57.74	26.77	12.00	96.51
260 Workers' Compensation	1,125.12	922.02		2,047.14
Total Personnel Services – Employee Benefits	\$204,948.59	\$116,566.56	\$1,048.44	\$322,563.59
300 Purchased Professional and Technical Services				
324 Professional Educational Services – Employee Training and Development Services	793.00	160.00		953.00
329 Professional Educational Services – Other	12,750.00	7,000.00		19,750.00
Total Purchased Professional and Technical Services	\$13,543.00	\$7,160.00		\$20,703.00
500 Other Purchased Services				
580 Travel	1,021.61	314.99		1,336.60
Total Other Purchased Services	\$1,021.61	\$314.99		\$1,336.60
600 Supplies				
610 General Supplies	9,426.98	7,981.01		17,407.99
640 Books and Periodicals	60.00			60.00
Total Supplies	\$9,486.98	\$7,981.01		\$17,467.99
700 Property				
762 Capitalized Equipment - Replacement		677.81		677.81
Total Property		\$677.81		\$677.81
800 Other Objects				
810 Dues and Fees	749.00	645.00		1,394.00
Total Other Objects	\$749.00	\$645.00		\$1,394.00
Total 2140 Psychological Services	\$562,871.82	\$329,436.00	\$14,596.68	\$906,904.50

General Fund (10)

2150 Speech Pathology and Audiology Services

Elementary

Secondary

Federal

Total

300 Purchased Professional and Technical Services

329 Professional Educational Services – Other

12,942.26

12,546.13

25,488.39

Total Purchased Professional and Technical Services

\$12,942.26

\$12,546.13

\$25,488.39

Total 2150 Speech Pathology and Audiology Services

\$12,942.26

\$12,546.13

\$25,488.39

General Fund (10)

2170 Student Accounting Services

Elementary

Secondary

Federal

Total

100 Personnel Services – Salaries

100 Personnel Services – Salaries

36,947.42

Total Personnel Services – Salaries

\$36,947.42

200 Personnel Services – Employee Benefits

210 Group Insurance – Contracted Provider

6,750.84

220 Social Security Contributions

2,772.07

230 PSERS Retirement Contributions

10,856.13

250 Unemployment Compensation

10.51

260 Workers' Compensation

184.38

Total Personnel Services – Employee Benefits

\$20,573.93

Total 2170 Student Accounting Services

\$57,521.35

General Fund (10)

	<u>Elementary</u>	<u>Secondary</u>	<u>Federal</u>	<u>Total</u>
2200 Support Services – Instructional Staff				
100 Personnel Services – Salaries				
100 Personnel Services – Salaries	725,883.82	584,495.27		1,310,379.09
Total Personnel Services – Salaries	\$725,883.82	\$584,495.27		\$1,310,379.09
200 Personnel Services – Employee Benefits				
210 Group Insurance – Contracted Provider	162,193.38	149,194.20		311,387.58
220 Social Security Contributions	52,698.66	41,631.84		94,330.50
230 PSERS Retirement Contributions	215,317.00	174,086.44		389,403.44
240 Tuition Reimbursement	128,803.45	110,377.50		239,180.95
250 Unemployment Compensation	100.66	88.28		188.94
260 Workers' Compensation	2,899.89	1,999.30		4,899.19
Total Personnel Services – Employee Benefits	\$562,013.04	\$477,377.56		\$1,039,390.60
300 Purchased Professional and Technical Services				
324 Professional Educational Services – Employee Training and Development Services	694.00	8,819.69		9,513.69
329 Professional Educational Services – Other	77,743.00	283,500.00		361,243.00
330 Other Professional Services	1,945.00	6,073.50		8,018.50
390 Other Purchased Professional and Technical Services		6,049.52		6,049.52
Total Purchased Professional and Technical Services	\$80,382.00	\$304,442.71		\$384,824.71
500 Other Purchased Services				
580 Travel	3,306.95	1,196.66		4,503.61
Total Other Purchased Services	\$3,306.95	\$1,196.66		\$4,503.61
600 Supplies				
610 General Supplies	1,506.37	6,634.11		8,140.48
640 Books and Periodicals	28,997.95	7,876.60		36,874.55
Total Supplies	\$30,504.32	\$14,510.71		\$45,015.03
700 Property				
758 Capitalized Technology Software - Original		17,560.23		17,560.23
Total Property		\$17,560.23		\$17,560.23
800 Other Objects				
810 Dues and Fees	1,796.00	3,620.00		5,416.00
Total Other Objects	\$1,796.00	\$3,620.00		\$5,416.00
Total 2200 Support Services – Instructional Staff	\$1,403,886.13	\$1,403,203.14		\$2,807,089.27

General Fund (10)

2220 Technology Support Services

	<u>Elementary</u>	<u>Secondary</u>	<u>Federal</u>	<u>Total</u>
600 Supplies				
610 General Supplies	156.47	1,639.35		1,795.82
Total Supplies	\$156.47	\$1,639.35		\$1,795.82
700 Property				
758 Capitalized Technology Software - Original		9,924.21		9,924.21
Total Property		\$9,924.21		\$9,924.21
Total 2220 Technology Support Services	\$156.47	\$11,563.56		\$11,720.03

General Fund (10)

2240 Computer-Assisted Instruction Support Services

Elementary

Secondary

Federal

Total

700 Property

758 Capitalized Technology Software - Original

7,636.02

7,636.02

Total Property

\$7,636.02

\$7,636.02

Total 2240 Computer-Assisted Instruction Support Services

\$7,636.02

\$7,636.02

General Fund (10)

	<u>Elementary</u>	<u>Secondary</u>	<u>Federal</u>	<u>Total</u>
2250 School Library Services				
100 Personnel Services – Salaries				
100 Personnel Services – Salaries	400,997.17	227,849.99		628,847.16
Total Personnel Services – Salaries	\$400,997.17	\$227,849.99		\$628,847.16
200 Personnel Services – Employee Benefits				
210 Group Insurance – Contracted Provider	90,709.75	65,937.82		156,647.57
220 Social Security Contributions	30,380.24	17,333.96		47,714.20
230 PSERS Retirement Contributions	119,934.64	68,019.39		187,954.03
250 Unemployment Compensation	70.70	48.00		118.70
260 Workers' Compensation	1,980.92	851.87		2,832.79
Total Personnel Services – Employee Benefits	\$243,076.25	\$152,191.04		\$395,267.29
300 Purchased Professional and Technical Services				
330 Other Professional Services		2,662.50		2,662.50
390 Other Purchased Professional and Technical Services		2,322.52		2,322.52
Total Purchased Professional and Technical Services		\$4,985.02		\$4,985.02
600 Supplies				
610 General Supplies	1,349.90	1,384.53		2,734.43
640 Books and Periodicals	10,668.65	7,876.60		18,545.25
Total Supplies	\$12,018.55	\$9,261.13		\$21,279.68
Total 2250 School Library Services	\$656,091.97	\$394,287.18		\$1,050,379.15

General Fund (10)

2260 Instruction and Curriculum Development Services

	<u>Elementary</u>	<u>Secondary</u>	<u>Federal</u>	<u>Total</u>
100 Personnel Services – Salaries				
100 Personnel Services – Salaries	312,123.13	345,741.23		657,864.36
Total Personnel Services – Salaries	\$312,123.13	\$345,741.23		\$657,864.36
200 Personnel Services – Employee Benefits				
210 Group Insurance – Contracted Provider	71,483.63	83,256.38		154,740.01
220 Social Security Contributions	21,342.08	23,466.56		44,808.64
230 PSERS Retirement Contributions	91,549.48	103,171.62		194,721.10
250 Unemployment Compensation	29.96	39.02		68.98
260 Workers' Compensation	906.65	1,142.48		2,049.13
Total Personnel Services – Employee Benefits	\$185,311.80	\$211,076.06		\$396,387.86
300 Purchased Professional and Technical Services				
324 Professional Educational Services – Employee Training and Development Services	694.00	484.00		1,178.00
329 Professional Educational Services – Other	23,743.00			23,743.00
330 Other Professional Services	1,945.00	3,411.00		5,356.00
Total Purchased Professional and Technical Services	\$26,382.00	\$3,895.00		\$30,277.00
500 Other Purchased Services				
580 Travel	3,306.95	1,196.66		4,503.61
Total Other Purchased Services	\$3,306.95	\$1,196.66		\$4,503.61
600 Supplies				
610 General Supplies		3,070.68		3,070.68
640 Books and Periodicals	18,329.30			18,329.30
Total Supplies	\$18,329.30	\$3,070.68		\$21,399.98
800 Other Objects				
810 Dues and Fees	1,796.00	1,650.00		3,446.00
Total Other Objects	\$1,796.00	\$1,650.00		\$3,446.00
Total 2260 Instruction and Curriculum Development Services	\$547,249.18	\$566,629.63		\$1,113,878.81

General Fund (10)

	<u>Elementary</u>	<u>Secondary</u>	<u>Federal</u>	<u>Total</u>
2270 Instructional Staff Professional Development Services				
100 Personnel Services – Salaries				
100 Personnel Services – Salaries		1,787.25		1,787.25
Total Personnel Services – Salaries		\$1,787.25		\$1,787.25
200 Personnel Services – Employee Benefits				
220 Social Security Contributions		136.42		136.42
230 PSERS Retirement Contributions		157.66		157.66
240 Tuition Reimbursement	128,803.45	110,377.50		239,180.95
250 Unemployment Compensation		1.26		1.26
260 Workers' Compensation		1.75		1.75
Total Personnel Services – Employee Benefits	\$128,803.45	\$110,674.59		\$239,478.04
300 Purchased Professional and Technical Services				
324 Professional Educational Services – Employee Training and Development Services		8,335.69		8,335.69
329 Professional Educational Services – Other	54,000.00	283,500.00		337,500.00
390 Other Purchased Professional and Technical Services		3,727.00		3,727.00
Total Purchased Professional and Technical Services	\$54,000.00	\$295,562.69		\$349,562.69
600 Supplies				
610 General Supplies		539.55		539.55
Total Supplies		\$539.55		\$539.55
800 Other Objects				
810 Dues and Fees		1,970.00		1,970.00
Total Other Objects		\$1,970.00		\$1,970.00
Total 2270 Instructional Staff Professional Development Services	\$182,803.45	\$410,534.08		\$593,337.53

General Fund (10)

	<u>Elementary</u>	<u>Secondary</u>	<u>Federal</u>	<u>Total</u>
2280 Nonpublic Support Services				
100 Personnel Services – Salaries				
100 Personnel Services – Salaries	12,763.52	9,116.80		21,880.32
Total Personnel Services – Salaries	\$12,763.52	\$9,116.80		\$21,880.32
200 Personnel Services – Employee Benefits				
220 Social Security Contributions	976.34	694.90		1,671.24
230 PSERS Retirement Contributions	3,832.88	2,737.77		6,570.65
260 Workers’ Compensation	12.32	3.20		15.52
Total Personnel Services – Employee Benefits	\$4,821.54	\$3,435.87		\$8,257.41
Total 2280 Nonpublic Support Services	\$17,585.06	\$12,552.67		\$30,137.73

General Fund (10)

	<u>Elementary</u>	<u>Secondary</u>	<u>Federal</u>	<u>Total</u>
2300 Support Services – Administration				
100 Personnel Services – Salaries				
100 Personnel Services – Salaries	1,313,054.41	1,442,912.21		3,236,423.44
Total Personnel Services – Salaries	\$1,313,054.41	\$1,442,912.21		\$3,236,423.44
200 Personnel Services – Employee Benefits				
210 Group Insurance – Contracted Provider	441,467.12	428,744.65		984,411.58
220 Social Security Contributions	96,923.63	106,980.16		234,238.32
230 PSERS Retirement Contributions	383,522.97	429,051.25		928,152.53
250 Unemployment Compensation	224.25	371.01		638.24
260 Workers' Compensation	3,643.84	5,950.03		11,342.19
Total Personnel Services – Employee Benefits	\$925,781.81	\$971,097.10		\$2,158,782.86
300 Purchased Professional and Technical Services				
310 Official / Administrative Services				43,853.28
324 Professional Educational Services – Employee Training and Development Services	9,173.55	10,869.91		22,486.38
329 Professional Educational Services – Other				64,099.01
330 Other Professional Services	2,280.00	1,875.00		216,116.53
390 Other Purchased Professional and Technical Services				7,125.00
Total Purchased Professional and Technical Services	\$11,453.55	\$12,744.91		\$353,680.20
400 Purchased Property Services				
430 Repairs and Maintenance Services				8,541.74
440 Rentals				30,971.43
Total Purchased Property Services				\$39,513.17
500 Other Purchased Services				
520 Insurance – General				73,778.75
530 Communications	23,644.04	21,509.97		58,793.75
549 Other Advertising/Public Relations				25,447.94
550 Printing and Binding	536.15	553.18		60,687.63
580 Travel	3,576.74	4,297.29		10,274.97
Total Other Purchased Services	\$27,756.93	\$26,360.44		\$228,983.04
600 Supplies				
610 General Supplies	5,222.46	5,111.42		36,837.53
640 Books and Periodicals	1,592.50	715.92		3,254.53
Total Supplies	\$6,814.96	\$5,827.34		\$40,092.06
700 Property				
752 Capital Equipment – Original and Additional	1,375.00	8,881.04		10,256.04
762 Capitalized Equipment - Replacement	990.00	828.24		1,818.24
Total Property	\$2,365.00	\$9,709.28		\$12,074.28
800 Other Objects				
810 Dues and Fees	6,935.00	7,105.70		39,191.01
820 Claims and Judgments Against the LEA				1,895.00
890 Miscellaneous Expenditures				6,191.97
Total Other Objects	\$6,935.00	\$7,105.70		\$47,277.98
Total 2300 Support Services – Administration	\$2,294,161.66	\$2,475,756.98		\$6,116,827.03

General Fund (10)

2310 Board Services

Elementary Secondary Federal Total

300 Purchased Professional and Technical Services

324	Professional Educational Services – Employee Training and Development Services		940.87
330	Other Professional Services		15,100.00

Total Purchased Professional and Technical Services **\$16,040.87**

400 Purchased Property Services

430	Repairs and Maintenance Services		8,541.74
440	Rentals		30,971.43

Total Purchased Property Services **\$39,513.17**

500 Other Purchased Services

520	Insurance – General		73,778.75
549	Other Advertising/Public Relations		25,447.94
580	Travel		1,583.44

Total Other Purchased Services **\$100,810.13**

600 Supplies

610	General Supplies		3,749.37
-----	------------------	--	----------

Total Supplies **\$3,749.37**

800 Other Objects

810	Dues and Fees		14,502.50
820	Claims and Judgments Against the LEA		1,895.00

Total Other Objects **\$16,397.50**

Total 2310 Board Services **\$176,511.04**

General Fund (10)

2330 Tax Assessment and Collection Services

Elementary

Secondary

Federal

Total

100 Personnel Services – Salaries

100 Personnel Services – Salaries

77,301.50

Total Personnel Services – Salaries

\$77,301.50

200 Personnel Services – Employee Benefits

220 Social Security Contributions

5,913.62

260 Workers' Compensation

256.84

Total Personnel Services – Employee Benefits

\$6,170.46

300 Purchased Professional and Technical Services

310 Official / Administrative Services

43,853.28

330 Other Professional Services

156,144.55

390 Other Purchased Professional and Technical Services

7,125.00

Total Purchased Professional and Technical Services

\$207,122.83

500 Other Purchased Services

530 Communications

12,097.19

Total Other Purchased Services

\$12,097.19

800 Other Objects

890 Miscellaneous Expenditures

6,191.97

Total Other Objects

\$6,191.97

Total 2330 Tax Assessment and Collection Services

\$308,883.95

General Fund (10)

2350 Legal and Accounting Services

Elementary

Secondary

Federal

Total

300 Purchased Professional and Technical Services

330 Other Professional Services

37,966.98

Total Purchased Professional and Technical Services

\$37,966.98

Total 2350 Legal and Accounting Services

\$37,966.98

General Fund (10)

2360 Office of the Superintendent / Executive Director Services

<u>Elementary</u>	<u>Secondary</u>	<u>Federal</u>	<u>Total</u>
-------------------	------------------	----------------	--------------

100 Personnel Services – Salaries			
100 Personnel Services – Salaries			276,840.85
Total Personnel Services – Salaries			\$276,840.85
200 Personnel Services – Employee Benefits			
210 Group Insurance – Contracted Provider			75,342.57
220 Social Security Contributions			14,623.26
230 PSERS Retirement Contributions			76,599.25
250 Unemployment Compensation			23.48
260 Workers' Compensation			1,041.12
Total Personnel Services – Employee Benefits			\$167,629.68
300 Purchased Professional and Technical Services			
324 Professional Educational Services – Employee Training and Development Services			816.05
330 Other Professional Services			2,750.00
Total Purchased Professional and Technical Services			\$3,566.05
500 Other Purchased Services			
530 Communications	13,521.69	13,578.49	27,100.18
580 Travel			698.53
Total Other Purchased Services	\$13,521.69	\$13,578.49	\$27,798.71
600 Supplies			
610 General Supplies			4,376.67
640 Books and Periodicals			946.11
Total Supplies			\$5,322.78
800 Other Objects			
810 Dues and Fees			6,120.00
Total Other Objects			\$6,120.00
Total 2360 Office of the Superintendent / Executive Director Services	\$13,521.69	\$13,578.49	\$487,278.07

General Fund (10)

2370 Community Relations Services

Elementary

Secondary

Federal

Total

100 Personnel Services – Salaries

100 Personnel Services – Salaries

126,314.47

Total Personnel Services – Salaries

\$126,314.47

200 Personnel Services – Employee Benefits

210 Group Insurance – Contracted Provider

38,857.24

220 Social Security Contributions

9,797.65

230 PSERS Retirement Contributions

38,979.06

250 Unemployment Compensation

19.50

260 Workers' Compensation

450.36

Total Personnel Services – Employee Benefits

\$88,103.81

300 Purchased Professional and Technical Services

324 Professional Educational Services – Employee Training and Development Services

686.00

329 Professional Educational Services – Other

64,099.01

Total Purchased Professional and Technical Services

\$64,785.01

500 Other Purchased Services

530 Communications

1,542.55

550 Printing and Binding

59,598.30

580 Travel

118.97

Total Other Purchased Services

\$61,259.82

600 Supplies

610 General Supplies

18,377.61

Total Supplies

\$18,377.61

800 Other Objects

810 Dues and Fees

4,527.81

Total Other Objects

\$4,527.81

Total 2370 Community Relations Services

\$363,368.53

General Fund (10)

	<u>Elementary</u>	<u>Secondary</u>	<u>Federal</u>	<u>Total</u>
2380 Office of the Principal Services				
100 Personnel Services – Salaries				
100 Personnel Services – Salaries	1,313,054.41	1,442,912.21		2,755,966.62
Total Personnel Services – Salaries	\$1,313,054.41	\$1,442,912.21		\$2,755,966.62
200 Personnel Services – Employee Benefits				
210 Group Insurance – Contracted Provider	441,467.12	428,744.65		870,211.77
220 Social Security Contributions	96,923.63	106,980.16		203,903.79
230 PSERS Retirement Contributions	383,522.97	429,051.25		812,574.22
250 Unemployment Compensation	224.25	371.01		595.26
260 Workers' Compensation	3,643.84	5,950.03		9,593.87
Total Personnel Services – Employee Benefits	\$925,781.81	\$971,097.10		\$1,896,878.91
300 Purchased Professional and Technical Services				
324 Professional Educational Services – Employee Training and Development Services	9,173.55	10,869.91		20,043.46
330 Other Professional Services	2,280.00	1,875.00		4,155.00
Total Purchased Professional and Technical Services	\$11,453.55	\$12,744.91		\$24,198.46
500 Other Purchased Services				
530 Communications	10,122.35	7,931.48		18,053.83
550 Printing and Binding	536.15	553.18		1,089.33
580 Travel	3,576.74	4,297.29		7,874.03
Total Other Purchased Services	\$14,235.24	\$12,781.95		\$27,017.19
600 Supplies				
610 General Supplies	5,222.46	5,111.42		10,333.88
640 Books and Periodicals	1,592.50	715.92		2,308.42
Total Supplies	\$6,814.96	\$5,827.34		\$12,642.30
700 Property				
752 Capital Equipment – Original and Additional	1,375.00	8,881.04		10,256.04
762 Capitalized Equipment - Replacement	990.00	828.24		1,818.24
Total Property	\$2,365.00	\$9,709.28		\$12,074.28
800 Other Objects				
810 Dues and Fees	6,935.00	7,105.70		14,040.70
Total Other Objects	\$6,935.00	\$7,105.70		\$14,040.70
Total 2380 Office of the Principal Services	\$2,280,639.97	\$2,462,178.49		\$4,742,818.46

General Fund (10)

2400 Support Services – Pupil Health

<u>Elementary</u>	<u>Secondary</u>	<u>Federal</u>	<u>Total</u>
-------------------	------------------	----------------	--------------

100 Personnel Services – Salaries

100 Personnel Services – Salaries			661,563.28
-----------------------------------	--	--	------------

Total Personnel Services – Salaries			\$661,563.28
--	--	--	---------------------

200 Personnel Services – Employee Benefits

210 Group Insurance – Contracted Provider			181,997.35
---	--	--	------------

220 Social Security Contributions			50,042.67
-----------------------------------	--	--	-----------

230 PSERS Retirement Contributions			194,868.01
------------------------------------	--	--	------------

250 Unemployment Compensation			153.12
-------------------------------	--	--	--------

260 Workers' Compensation			2,432.97
---------------------------	--	--	----------

Total Personnel Services – Employee Benefits			\$429,494.12
---	--	--	---------------------

300 Purchased Professional and Technical Services

330 Other Professional Services			1,895.00
---------------------------------	--	--	----------

Total Purchased Professional and Technical Services			\$1,895.00
--	--	--	-------------------

500 Other Purchased Services

580 Travel			44.45
------------	--	--	-------

Total Other Purchased Services			\$44.45
---------------------------------------	--	--	----------------

600 Supplies

610 General Supplies			15,923.40
----------------------	--	--	-----------

Total Supplies			\$15,923.40
-----------------------	--	--	--------------------

700 Property

752 Capital Equipment – Original and Additional			9,721.80
---	--	--	----------

Total Property			\$9,721.80
-----------------------	--	--	-------------------

Total 2400 Support Services – Pupil Health			\$1,118,642.05
---	--	--	-----------------------

General Fund (10)

2420 Medical Services

Elementary

Secondary

Federal

Total

300 Purchased Professional and Technical Services

330 Other Professional Services

1,175.00

Total Purchased Professional and Technical Services

\$1,175.00

600 Supplies

610 General Supplies

15,923.40

Total Supplies

\$15,923.40

700 Property

752 Capital Equipment – Original and Additional

9,721.80

Total Property

\$9,721.80

Total 2420 Medical Services

\$26,820.20

General Fund (10)

2430 Dental Services

Elementary

Secondary

Federal

Total

300 Purchased Professional and Technical Services

330 Other Professional Services

720.00

Total Purchased Professional and Technical Services

\$720.00

Total 2430 Dental Services

\$720.00

General Fund (10)

2440 Nursing Services

Elementary

Secondary

Federal

Total

100 Personnel Services – Salaries

100 Personnel Services – Salaries

661,563.28

Total Personnel Services – Salaries

\$661,563.28

200 Personnel Services – Employee Benefits

210 Group Insurance – Contracted Provider

181,997.35

220 Social Security Contributions

50,042.67

230 PSERS Retirement Contributions

194,868.01

250 Unemployment Compensation

153.12

260 Workers' Compensation

2,432.97

Total Personnel Services – Employee Benefits

\$429,494.12

500 Other Purchased Services

580 Travel

44.45

Total Other Purchased Services

\$44.45

Total 2440 Nursing Services

\$1,091,101.85

General Fund (10)

	<u>Elementary</u>	<u>Secondary</u>	<u>Federal</u>	<u>Total</u>
2500 Support Services – Business				
100 Personnel Services – Salaries				
100 Personnel Services – Salaries				356,609.51
Total Personnel Services – Salaries				\$356,609.51
200 Personnel Services – Employee Benefits				
210 Group Insurance – Contracted Provider				91,192.30
220 Social Security Contributions				25,685.11
230 PSERS Retirement Contributions				103,913.51
250 Unemployment Compensation				53.68
260 Workers' Compensation				942.93
Total Personnel Services – Employee Benefits				\$221,787.53
300 Purchased Professional and Technical Services				
324 Professional Educational Services – Employee Training and Development Services				735.96
329 Professional Educational Services – Other				5,016.00
Total Purchased Professional and Technical Services				\$5,751.96
500 Other Purchased Services				
580 Travel				486.83
Total Other Purchased Services				\$486.83
600 Supplies				
610 General Supplies				3,144.57
Total Supplies				\$3,144.57
800 Other Objects				
810 Dues and Fees				739.00
Total Other Objects				\$739.00
Total 2500 Support Services – Business				\$588,519.40

General Fund (10)

2510 Fiscal Services

	<u>Elementary</u>	<u>Secondary</u>	<u>Federal</u>	<u>Total</u>
100 Personnel Services – Salaries				
100 Personnel Services – Salaries				356,609.51
Total Personnel Services – Salaries				\$356,609.51
200 Personnel Services – Employee Benefits				
210 Group Insurance – Contracted Provider				91,192.30
220 Social Security Contributions				25,685.11
230 PSERS Retirement Contributions				103,913.51
250 Unemployment Compensation				53.68
260 Workers' Compensation				942.93
Total Personnel Services – Employee Benefits				\$221,787.53
300 Purchased Professional and Technical Services				
324 Professional Educational Services – Employee Training and Development Services				735.96
329 Professional Educational Services – Other				5,016.00
Total Purchased Professional and Technical Services				\$5,751.96
500 Other Purchased Services				
580 Travel				486.83
Total Other Purchased Services				\$486.83
600 Supplies				
610 General Supplies				3,144.57
Total Supplies				\$3,144.57
800 Other Objects				
810 Dues and Fees				739.00
Total Other Objects				\$739.00
Total 2510 Fiscal Services				\$588,519.40

General Fund (10)

2511 Supervision of Fiscal Services - Head of Component

	<u>Elementary</u>	<u>Secondary</u>	<u>Federal</u>	<u>Total</u>
100 Personnel Services – Salaries				
100 Personnel Services – Salaries				156,415.68
Total Personnel Services – Salaries				\$156,415.68
200 Personnel Services – Employee Benefits				
210 Group Insurance – Contracted Provider				43,528.97
220 Social Security Contributions				10,673.32
230 PSERS Retirement Contributions				46,779.66
250 Unemployment Compensation				14.67
260 Workers' Compensation				89.64
Total Personnel Services – Employee Benefits				\$101,086.26
300 Purchased Professional and Technical Services				
324 Professional Educational Services – Employee Training and Development Services				735.96
329 Professional Educational Services – Other				5,016.00
Total Purchased Professional and Technical Services				\$5,751.96
500 Other Purchased Services				
580 Travel				486.83
Total Other Purchased Services				\$486.83
600 Supplies				
610 General Supplies				3,144.57
Total Supplies				\$3,144.57
800 Other Objects				
810 Dues and Fees				739.00
Total Other Objects				\$739.00
Total 2511 Supervision of Fiscal Services - Head of Component				\$267,624.30

General Fund (10)

2513 Receiving and Disbursing Funds Services

Elementary

Secondary

Federal

Total

100 Personnel Services – Salaries

100 Personnel Services – Salaries

34,400.66

Total Personnel Services – Salaries

\$34,400.66

200 Personnel Services – Employee Benefits

210 Group Insurance – Contracted Provider

22,794.35

220 Social Security Contributions

2,469.55

230 PSERS Retirement Contributions

10,264.05

250 Unemployment Compensation

9.78

260 Workers' Compensation

170.91

Total Personnel Services – Employee Benefits

\$35,708.64

Total 2513 Receiving and Disbursing Funds Services

\$70,109.30

General Fund (10)

2514 Payroll Services

Elementary

Secondary

Federal

Total

100 Personnel Services – Salaries

100 Personnel Services – Salaries

59,643.75

Total Personnel Services – Salaries

\$59,643.75

200 Personnel Services – Employee Benefits

210 Group Insurance – Contracted Provider

1,177.20

220 Social Security Contributions

4,550.77

230 PSERS Retirement Contributions

16,563.13

250 Unemployment Compensation

9.74

260 Workers' Compensation

297.34

Total Personnel Services – Employee Benefits

\$22,598.18

Total 2514 Payroll Services

\$82,241.93

General Fund (10)

2515 Financial Accounting Services

Elementary

Secondary

Federal

Total

100 Personnel Services – Salaries

100 Personnel Services – Salaries

77,569.23

Total Personnel Services – Salaries

\$77,569.23

200 Personnel Services – Employee Benefits

210 Group Insurance – Contracted Provider

1,177.20

220 Social Security Contributions

5,889.51

230 PSERS Retirement Contributions

21,771.68

250 Unemployment Compensation

9.76

260 Workers' Compensation

385.04

Total Personnel Services – Employee Benefits

\$29,233.19

Total 2515 Financial Accounting Services

\$106,802.42

General Fund (10)

2519 Other Fiscal Services

Elementary

Secondary

Federal

Total

100 Personnel Services – Salaries

100 Personnel Services – Salaries

28,580.19

Total Personnel Services – Salaries

\$28,580.19

200 Personnel Services – Employee Benefits

210 Group Insurance – Contracted Provider

22,514.58

220 Social Security Contributions

2,101.96

230 PSERS Retirement Contributions

8,534.99

250 Unemployment Compensation

9.73

Total Personnel Services – Employee Benefits

\$33,161.26

Total 2519 Other Fiscal Services

\$61,741.45

General Fund (10)

	<u>Elementary</u>	<u>Secondary</u>	<u>Federal</u>	<u>Total</u>
2600 Operation and Maintenance of Plant Services				
100 Personnel Services – Salaries				
100 Personnel Services – Salaries				1,809,451.94
Total Personnel Services – Salaries				\$1,809,451.94
200 Personnel Services – Employee Benefits				
210 Group Insurance – Contracted Provider				471,948.06
220 Social Security Contributions				135,688.29
230 PSERS Retirement Contributions				536,487.17
250 Unemployment Compensation				372.38
260 Workers' Compensation				6,089.48
Total Personnel Services – Employee Benefits				\$1,150,585.38
300 Purchased Professional and Technical Services				
324 Professional Educational Services – Employee Training and Development Services				70.00
329 Professional Educational Services – Other				399,746.51
Total Purchased Professional and Technical Services				\$399,816.51
400 Purchased Property Services				
410 Cleaning Services				1,783,743.11
420 Utility Services				790,551.40
430 Repairs and Maintenance Services				507,068.01
440 Rentals				9,840.00
490 Other Purchased Property Services				6,887.36
Total Purchased Property Services				\$3,098,089.88
500 Other Purchased Services				
521 Fire Insurance				142,807.00
522 Automotive Liability Insurance				8,065.00
523 General Property and Liability Insurance				9,681.00
530 Communications				119,351.47
Total Other Purchased Services				\$279,904.47
600 Supplies				
610 General Supplies	123,084.40	175,261.41		298,345.81
620 Energy				193,625.39
Total Supplies	\$123,084.40	\$175,261.41		\$491,971.20
700 Property				
752 Capital Equipment – Original and Additional				2,535.10
762 Capitalized Equipment - Replacement				56,482.00
Total Property				\$59,017.10
800 Other Objects				
810 Dues and Fees				9,360.00
Total Other Objects				\$9,360.00
Total 2600 Operation and Maintenance of Plant Services	\$123,084.40	\$175,261.41		\$7,298,196.48

General Fund (10)

	<u>Elementary</u>	<u>Secondary</u>	<u>Federal</u>	<u>Total</u>
2610 Supervision of Operation and Maintenance of Plant Services				
100 Personnel Services – Salaries				
100 Personnel Services – Salaries				168,710.50
Total Personnel Services – Salaries				\$168,710.50
200 Personnel Services – Employee Benefits				
210 Group Insurance – Contracted Provider				44,688.26
220 Social Security Contributions				12,663.98
230 PSERS Retirement Contributions				49,850.89
250 Unemployment Compensation				24.33
260 Workers' Compensation				89.64
Total Personnel Services – Employee Benefits				\$107,317.10
Total 2610 Supervision of Operation and Maintenance of Plant Services				\$276,027.60

General Fund (10)

	<u>Elementary</u>	<u>Secondary</u>	<u>Federal</u>	<u>Total</u>
2611 Supervision of Operation and Maintenance of Plant Services – Head of Component				
100 Personnel Services – Salaries				
100 Personnel Services – Salaries				119,780.62
Total Personnel Services – Salaries				\$119,780.62
200 Personnel Services – Employee Benefits				
210 Group Insurance – Contracted Provider				27,451.82
220 Social Security Contributions				8,988.74
230 PSERS Retirement Contributions				35,261.19
250 Unemployment Compensation				14.58
260 Workers' Compensation				89.64
Total Personnel Services – Employee Benefits				\$71,805.97
Total 2611 Supervision of Operation and Maintenance of Plant Services – Head of Component				\$191,586.59

General Fund (10)

2619 Supervision of Operation and Maintenance of Plant Services – All Other Supervision

Elementary

Secondary

Federal

Total

100 Personnel Services – Salaries

100 Personnel Services – Salaries

48,929.88

Total Personnel Services – Salaries

\$48,929.88

200 Personnel Services – Employee Benefits

210 Group Insurance – Contracted Provider

17,236.44

220 Social Security Contributions

3,675.24

230 PSERS Retirement Contributions

14,589.70

250 Unemployment Compensation

9.75

Total Personnel Services – Employee Benefits

\$35,511.13

Total 2619 Supervision of Operation and Maintenance of Plant Services – All Other Supervision

\$84,441.01

General Fund (10)

	<u>Elementary</u>	<u>Secondary</u>	<u>Federal</u>	<u>Total</u>
2620 Operation of Buildings Services				
100 Personnel Services – Salaries				
100 Personnel Services – Salaries				1,640,741.44
Total Personnel Services – Salaries				\$1,640,741.44
200 Personnel Services – Employee Benefits				
210 Group Insurance – Contracted Provider				427,259.80
220 Social Security Contributions				123,024.31
230 PSERS Retirement Contributions				486,636.28
250 Unemployment Compensation				348.05
260 Workers' Compensation				5,999.84
Total Personnel Services – Employee Benefits				\$1,043,268.28
300 Purchased Professional and Technical Services				
324 Professional Educational Services – Employee Training and Development Services				70.00
329 Professional Educational Services – Other				16,935.00
Total Purchased Professional and Technical Services				\$17,005.00
400 Purchased Property Services				
410 Cleaning Services				1,783,743.11
420 Utility Services				790,551.40
430 Repairs and Maintenance Services				507,068.01
440 Rentals				9,840.00
490 Other Purchased Property Services				6,887.36
Total Purchased Property Services				\$3,098,089.88
500 Other Purchased Services				
521 Fire Insurance				142,807.00
522 Automotive Liability Insurance				8,065.00
523 General Property and Liability Insurance				9,681.00
530 Communications				119,351.47
Total Other Purchased Services				\$279,904.47
600 Supplies				
610 General Supplies	123,084.40	175,261.41		298,345.81
620 Energy				186,258.38
Total Supplies	\$123,084.40	\$175,261.41		\$484,604.19
700 Property				
752 Capital Equipment – Original and Additional				2,535.10
762 Capitalized Equipment - Replacement				56,482.00
Total Property				\$59,017.10
800 Other Objects				
810 Dues and Fees				9,360.00
Total Other Objects				\$9,360.00
Total 2620 Operation of Buildings Services	\$123,084.40	\$175,261.41		\$6,631,990.36

General Fund (10)

	<u>Elementary</u>	<u>Secondary</u>	<u>Federal</u>	<u>Total</u>
2650 Vehicle Operation and Maintenance Services (Other Than Student Transportation Vehicles)				
600 <u>Supplies</u>				
620 Energy				7,367.01
Total Supplies				\$7,367.01
Total 2650 Vehicle Operation and Maintenance Services (Other Than Student Transportation Vehicles)				\$7,367.01

General Fund (10)

2660 Safety and Security Services

Elementary

Secondary

Federal

Total

300 Purchased Professional and Technical Services

329 Professional Educational Services – Other

382,811.51

Total Purchased Professional and Technical Services

\$382,811.51

Total 2660 Safety and Security Services

\$382,811.51

General Fund (10)

	<u>Elementary</u>	<u>Secondary</u>	<u>Federal</u>	<u>Total</u>
2700 Student Transportation Services				
100 Personnel Services – Salaries				
100 Personnel Services – Salaries				134,073.14
Total Personnel Services – Salaries				\$134,073.14
200 Personnel Services – Employee Benefits				
210 Group Insurance – Contracted Provider				54,319.64
220 Social Security Contributions				9,984.84
230 PSERS Retirement Contributions				40,111.23
250 Unemployment Compensation				22.47
260 Workers' Compensation				201.96
Total Personnel Services – Employee Benefits				\$104,640.14
300 Purchased Professional and Technical Services				
324 Professional Educational Services – Employee Training and Development Services				1,809.93
329 Professional Educational Services – Other				4,750.00
Total Purchased Professional and Technical Services				\$6,559.93
500 Other Purchased Services				
513 Contracted Carriers				7,345,350.69
516 Student Transportation Services From the IU				10,482.47
530 Communications				889.95
580 Travel				1,522.37
Total Other Purchased Services				\$7,358,245.48
600 Supplies				
610 General Supplies				2,328.33
Total Supplies				\$2,328.33
700 Property				
762 Capitalized Equipment - Replacement				164,715.00
Total Property				\$164,715.00
800 Other Objects				
810 Dues and Fees				45.00
Total Other Objects				\$45.00
Total 2700 Student Transportation Services				\$7,770,607.02

General Fund (10)

	<u>Elementary</u>	<u>Secondary</u>	<u>Federal</u>	<u>Total</u>
2710 Supervision of Student Transportation Services				
100 Personnel Services – Salaries				
100 Personnel Services – Salaries				134,073.14
Total Personnel Services – Salaries				\$134,073.14
200 Personnel Services – Employee Benefits				
210 Group Insurance – Contracted Provider				54,319.64
220 Social Security Contributions				9,984.84
230 PSERS Retirement Contributions				40,111.23
250 Unemployment Compensation				22.47
260 Workers' Compensation				201.96
Total Personnel Services – Employee Benefits				\$104,640.14
300 Purchased Professional and Technical Services				
324 Professional Educational Services – Employee Training and Development Services				1,809.93
329 Professional Educational Services – Other				4,750.00
Total Purchased Professional and Technical Services				\$6,559.93
600 Supplies				
610 General Supplies				209.72
Total Supplies				\$209.72
800 Other Objects				
810 Dues and Fees				45.00
Total Other Objects				\$45.00
Total 2710 Supervision of Student Transportation Services				\$245,527.93

General Fund (10)

2711 Supervision of Student Transportation Services – Head of Component

Elementary

Secondary

Federal

Total

100 Personnel Services – Salaries

100 Personnel Services – Salaries

89,794.20

Total Personnel Services – Salaries

\$89,794.20

200 Personnel Services – Employee Benefits

210 Group Insurance – Contracted Provider

34,352.19

220 Social Security Contributions

6,708.33

230 PSERS Retirement Contributions

26,845.56

250 Unemployment Compensation

9.75

Total Personnel Services – Employee Benefits

\$67,915.83

300 Purchased Professional and Technical Services

324 Professional Educational Services – Employee Training and Development Services

1,809.93

329 Professional Educational Services – Other

4,750.00

Total Purchased Professional and Technical Services

\$6,559.93

600 Supplies

610 General Supplies

209.72

Total Supplies

\$209.72

800 Other Objects

810 Dues and Fees

45.00

Total Other Objects

\$45.00

Total 2711 Supervision of Student Transportation Services – Head of Component

\$164,524.68

General Fund (10)

2719 Supervision of Student Transportation Services – All Other Supervision

Elementary

Secondary

Federal

Total

100 Personnel Services – Salaries

100 Personnel Services – Salaries

44,278.94

Total Personnel Services – Salaries

\$44,278.94

200 Personnel Services – Employee Benefits

210 Group Insurance – Contracted Provider

19,967.45

220 Social Security Contributions

3,276.51

230 PSERS Retirement Contributions

13,265.67

250 Unemployment Compensation

12.72

260 Workers' Compensation

201.96

Total Personnel Services – Employee Benefits

\$36,724.31

Total 2719 Supervision of Student Transportation Services – All Other Supervision

\$81,003.25

General Fund (10)

2720 Vehicle Operation Services

Elementary

Secondary

Federal

Total

500 Other Purchased Services

513 Contracted Carriers

5,799,597.41

516 Student Transportation Services From the IU

10,482.47

530 Communications

889.95

580 Travel

1,522.37

Total Other Purchased Services

\$5,812,492.20

600 Supplies

610 General Supplies

2,118.61

Total Supplies

\$2,118.61

700 Property

762 Capitalized Equipment - Replacement

164,715.00

Total Property

\$164,715.00

Total 2720 Vehicle Operation Services

\$5,979,325.81

General Fund (10)

	<u>Elementary</u>	<u>Secondary</u>	<u>Federal</u>	<u>Total</u>
2750 Nonpublic Transportation				
500 <u>Other Purchased Services</u>				
513 Contracted Carriers				1,545,753.28
Total Other Purchased Services				\$1,545,753.28
Total 2750 Nonpublic Transportation				\$1,545,753.28

General Fund (10)

	<u>Elementary</u>	<u>Secondary</u>	<u>Federal</u>	<u>Total</u>
2800 Support Services – Central				
100 Personnel Services – Salaries				
100 Personnel Services – Salaries				274,945.84
Total Personnel Services – Salaries				\$274,945.84
200 Personnel Services – Employee Benefits				
210 Group Insurance – Contracted Provider				109,044.20
220 Social Security Contributions				19,610.47
230 PSERS Retirement Contributions				81,306.54
240 Tuition Reimbursement				21,341.55
250 Unemployment Compensation				50.40
260 Workers' Compensation				3,550.43
Total Personnel Services – Employee Benefits				\$234,903.59
300 Purchased Professional and Technical Services				
324 Professional Educational Services – Employee Training and Development Services				1,220.00
329 Professional Educational Services – Other				10,750.00
Total Purchased Professional and Technical Services				\$11,970.00
500 Other Purchased Services				
580 Travel				826.19
Total Other Purchased Services				\$826.19
600 Supplies				
610 General Supplies				4,801.69
640 Books and Periodicals				702.78
Total Supplies				\$5,504.47
800 Other Objects				
810 Dues and Fees				775.00
890 Miscellaneous Expenditures				65.00
Total Other Objects				\$840.00
Total 2800 Support Services – Central				\$528,990.09

General Fund (10)

2810 Planning, Research, Development and Evaluation Services

Elementary

Secondary

Federal

Total

100 Personnel Services – Salaries

100 Personnel Services – Salaries

16,217.92

Total Personnel Services – Salaries

\$16,217.92

200 Personnel Services – Employee Benefits

210 Group Insurance – Contracted Provider

4,899.27

220 Social Security Contributions

1,210.64

230 PSERS Retirement Contributions

4,870.24

260 Workers' Compensation

81.08

Total Personnel Services – Employee Benefits

\$11,061.23

Total 2810 Planning, Research, Development and Evaluation Services

\$27,279.15

General Fund (10)

2830 Staff Services

	<u>Elementary</u>	<u>Secondary</u>	<u>Federal</u>	<u>Total</u>
100 Personnel Services – Salaries				
100 Personnel Services – Salaries				258,727.92
Total Personnel Services – Salaries				\$258,727.92
200 Personnel Services – Employee Benefits				
210 Group Insurance – Contracted Provider				104,144.93
220 Social Security Contributions				18,399.83
230 PSERS Retirement Contributions				76,436.30
240 Tuition Reimbursement				21,341.55
250 Unemployment Compensation				50.40
260 Workers' Compensation				3,469.35
Total Personnel Services – Employee Benefits				\$223,842.36
300 Purchased Professional and Technical Services				
324 Professional Educational Services – Employee Training and Development Services				1,220.00
329 Professional Educational Services – Other				10,750.00
Total Purchased Professional and Technical Services				\$11,970.00
500 Other Purchased Services				
580 Travel				826.19
Total Other Purchased Services				\$826.19
600 Supplies				
610 General Supplies				4,801.69
640 Books and Periodicals				702.78
Total Supplies				\$5,504.47
800 Other Objects				
810 Dues and Fees				775.00
890 Miscellaneous Expenditures				65.00
Total Other Objects				\$840.00
Total 2830 Staff Services				\$501,710.94

General Fund (10)

	<u>Elementary</u>	<u>Secondary</u>	<u>Federal</u>	<u>Total</u>
2831 Supervision of Staff Services				
100 Personnel Services – Salaries				
100 Personnel Services – Salaries				258,727.92
Total Personnel Services – Salaries				\$258,727.92
200 Personnel Services – Employee Benefits				
210 Group Insurance – Contracted Provider				104,144.93
220 Social Security Contributions				18,399.83
230 PSERS Retirement Contributions				76,436.30
250 Unemployment Compensation				50.40
260 Workers' Compensation				3,469.35
Total Personnel Services – Employee Benefits				\$202,500.81
300 Purchased Professional and Technical Services				
324 Professional Educational Services – Employee Training and Development Services				1,220.00
329 Professional Educational Services – Other				10,750.00
Total Purchased Professional and Technical Services				\$11,970.00
500 Other Purchased Services				
580 Travel				826.19
Total Other Purchased Services				\$826.19
600 Supplies				
610 General Supplies				4,801.69
640 Books and Periodicals				702.78
Total Supplies				\$5,504.47
800 Other Objects				
810 Dues and Fees				775.00
Total Other Objects				\$775.00
Total 2831 Supervision of Staff Services				\$480,304.39

LEA : 104107903 Seneca Valley SD

Printed 4/26/2018 10:57:21 AM

General Fund (10)

2832 Recruitment and Placement Services

Elementary

Secondary

Federal

Total

800 Other Objects

890 Miscellaneous Expenditures

65.00

Total Other Objects

\$65.00

Total 2832 Recruitment and Placement Services

\$65.00

General Fund (10)

2834 Staff Development Services – Non-Instructional, Certified Staff Only

Elementary

Secondary

Federal

Total

200 Personnel Services – Employee Benefits

240 Tuition Reimbursement

21,341.55

Total Personnel Services – Employee Benefits

\$21,341.55

Total 2834 Staff Development Services – Non-Instructional, Certified Staff Only

\$21,341.55

General Fund (10)

	<u>Elementary</u>	<u>Secondary</u>	<u>Federal</u>	<u>Total</u>
2900 Other Support Services				
100 Personnel Services – Salaries				
100 Personnel Services – Salaries				422,604.14
Total Personnel Services – Salaries				\$422,604.14
200 Personnel Services – Employee Benefits				
210 Group Insurance – Contracted Provider				123,991.33
220 Social Security Contributions				31,572.64
230 PSERS Retirement Contributions				126,024.48
250 Unemployment Compensation				58.48
260 Workers' Compensation				889.48
Total Personnel Services – Employee Benefits				\$282,536.41
300 Purchased Professional and Technical Services				
330 Other Professional Services				4,873.45
340 Technical Services				105,696.20
Total Purchased Professional and Technical Services				\$110,569.65
400 Purchased Property Services				
430 Repairs and Maintenance Services				9,998.20
Total Purchased Property Services				\$9,998.20
500 Other Purchased Services				
580 Travel				463.21
595 IU Payments By Withholding				133,325.83
Total Other Purchased Services				\$133,789.04
600 Supplies				
610 General Supplies				300,090.50
640 Books and Periodicals				323,513.40
Total Supplies				\$623,603.90
700 Property				
758 Capitalized Technology Software - Original				22,635.00
766 Capitalized Technology Hardware and Equipment – Replacement				631,531.16
768 Capitalized Technology Software - Replacement				313,737.51
Total Property				\$967,903.67
Total 2900 Other Support Services				\$2,551,005.01

General Fund (10)

2910 Support Services Not Listed Elsewhere In the 2000 Series

	<u>Elementary</u>	<u>Secondary</u>	<u>Federal</u>	<u>Total</u>
100 Personnel Services – Salaries				
100 Personnel Services – Salaries				422,604.14
Total Personnel Services – Salaries				\$422,604.14
200 Personnel Services – Employee Benefits				
210 Group Insurance – Contracted Provider				123,991.33
220 Social Security Contributions				31,572.64
230 PSERS Retirement Contributions				126,024.48
250 Unemployment Compensation				58.48
260 Workers' Compensation				889.48
Total Personnel Services – Employee Benefits				\$282,536.41
300 Purchased Professional and Technical Services				
330 Other Professional Services				4,873.45
340 Technical Services				105,696.20
Total Purchased Professional and Technical Services				\$110,569.65
400 Purchased Property Services				
430 Repairs and Maintenance Services				9,998.20
Total Purchased Property Services				\$9,998.20
500 Other Purchased Services				
580 Travel				463.21
595 IU Payments By Withholding				133,325.83
Total Other Purchased Services				\$133,789.04
600 Supplies				
610 General Supplies				300,090.50
640 Books and Periodicals				323,513.40
Total Supplies				\$623,603.90
700 Property				
758 Capitalized Technology Software - Original				22,635.00
766 Capitalized Technology Hardware and Equipment – Replacement				631,531.16
768 Capitalized Technology Software - Replacement				313,737.51
Total Property				\$967,903.67
Total 2910 Support Services Not Listed Elsewhere In the 2000 Series				\$2,551,005.01

LEA : 104107903 Seneca Valley SD

Printed 4/26/2018 10:57:25 AM

General Fund (10)

3000 Operation of Non-Instructional Services

Total

100 Personnel Services – Salaries

100 Personnel Services – Salaries 1,000,424.87

Total Personnel Services – Salaries \$1,000,424.87

200 Personnel Services – Employee Benefits

210 Group Insurance – Contracted Provider 33,652.33

220 Social Security Contributions 77,927.28

230 PSERS Retirement Contributions 293,250.11

250 Unemployment Compensation 373.03

260 Workers’ Compensation 1,387.15

Total Personnel Services – Employee Benefits \$406,589.90

300 Purchased Professional and Technical Services

323 Professional Educational Services – Other Educational Agencies 12,775.00

324 Professional Educational Services – Employee Training and Development Services 2,821.34

330 Other Professional Services 107,368.13

Total Purchased Professional and Technical Services \$122,964.47

400 Purchased Property Services

410 Cleaning Services 3,786.45

430 Repairs and Maintenance Services 22,147.38

440 Rentals 8,026.61

Total Purchased Property Services \$33,960.44

500 Other Purchased Services

510 Student Transportation Services 141,905.93

530 Communications 656.88

550 Printing and Binding 1,427.00

580 Travel 2,402.34

591 Services Purchased Locally 4,239.11

Total Other Purchased Services \$150,631.26

600 Supplies

610 General Supplies 78,948.22

Total Supplies \$78,948.22

700 Property

752 Capital Equipment – Original and Additional 10,566.70

762 Capitalized Equipment - Replacement 7,491.91

Total Property \$18,058.61

800 Other Objects

810 Dues and Fees 1,325.00

890 Miscellaneous Expenditures 246,287.92

Total Other Objects \$247,612.92

Total 3000 Operation of Non-Instructional Services \$2,059,190.69

LEA : 104107903 Seneca Valley SD

Printed 4/26/2018 10:57:25 AM

General Fund (10)

3200 Student Activities

Elementary Secondary Federal Total

100	<u>Personnel Services – Salaries</u>			
	100 Personnel Services – Salaries			1,000,424.87
Total Personnel Services – Salaries				\$1,000,424.87
200	<u>Personnel Services – Employee Benefits</u>			
	210 Group Insurance – Contracted Provider			33,652.33
	220 Social Security Contributions			77,927.28
	230 PSERS Retirement Contributions			293,250.11
	250 Unemployment Compensation			373.03
	260 Workers' Compensation			1,387.15
Total Personnel Services – Employee Benefits				\$406,589.90
300	<u>Purchased Professional and Technical Services</u>			
	323 Professional Educational Services – Other Educational Agencies			12,775.00
	324 Professional Educational Services – Employee Training and Development Services			2,821.34
	330 Other Professional Services			107,368.13
Total Purchased Professional and Technical Services				\$122,964.47
400	<u>Purchased Property Services</u>			
	410 Cleaning Services			3,786.45
	430 Repairs and Maintenance Services			22,147.38
	440 Rentals			8,026.61
Total Purchased Property Services				\$33,960.44
500	<u>Other Purchased Services</u>			
	510 Student Transportation Services			141,905.93
	530 Communications			656.88
	550 Printing and Binding			1,427.00
	580 Travel			2,402.34
Total Other Purchased Services				\$146,392.15
600	<u>Supplies</u>			
	610 General Supplies			78,948.22
Total Supplies				\$78,948.22
700	<u>Property</u>			
	752 Capital Equipment – Original and Additional			10,566.70
	762 Capitalized Equipment - Replacement			7,491.91
Total Property				\$18,058.61
800	<u>Other Objects</u>			
	810 Dues and Fees			1,325.00
	890 Miscellaneous Expenditures			246,287.92
Total Other Objects				\$247,612.92
Total 3200 Student Activities				\$2,054,951.58

LEA : 104107903 Seneca Valley SD

Printed 4/26/2018 10:57:25 AM

General Fund (10)

3300 Community Services

Elementary

Secondary

Federal

Total

500 Other Purchased Services

591 Services Purchased Locally

4,239.11

Total Other Purchased Services

\$4,239.11

Total 3300 Community Services

\$4,239.11

General Fund (10)

4000 Facilities Acquisition, Construction and Improvement Services

Total

300 Purchased Professional and Technical Services

330 Other Professional Services 1,440.00

Total Purchased Professional and Technical Services \$1,440.00

400 Purchased Property Services

430 Repairs and Maintenance Services 6,940.00

Total Purchased Property Services \$6,940.00

700 Property

762 Capitalized Equipment - Replacement 167,162.64

Total Property \$167,162.64

Total 4000 Facilities Acquisition, Construction and Improvement Services \$175,542.64

General Fund (10)

	<u>Elementary</u>	<u>Secondary</u>	<u>Federal</u>	<u>Total</u>
4200 Existing Site Improvement Services				
300 <u>Purchased Professional and Technical Services</u>				
330 Other Professional Services				1,440.00
Total Purchased Professional and Technical Services				\$1,440.00
Total 4200 Existing Site Improvement Services				\$1,440.00

LEA : 104107903 Seneca Valley SD

Printed 4/26/2018 10:57:26 AM

General Fund (10)

	<u>Elementary</u>	<u>Secondary</u>	<u>Federal</u>	<u>Total</u>
4600 Existing Building Improvement Services				
400 <u>Purchased Property Services</u>				
430 Repairs and Maintenance Services				6,940.00
Total Purchased Property Services				\$6,940.00
700 <u>Property</u>				
762 Capitalized Equipment - Replacement				167,162.64
Total Property				\$167,162.64
Total 4600 Existing Building Improvement Services				\$174,102.64

General Fund (10)

5000 Other Expenditures and Financing Uses

Total

800 Other Objects

830 Interest 3,194,610.57

880 Refunds of Prior Years' Receipts 98,896.04

Total Other Objects \$3,293,506.61

900 Other Uses of Funds

910 Redemption of Principal 6,590,000.00

Total Other Uses of Funds \$6,590,000.00

Total 5000 Other Expenditures and Financing Uses \$9,883,506.61

General Fund (10)

	<u>Elementary</u>	<u>Secondary</u>	<u>Federal</u>	<u>Total</u>
5100 Debt Service / Other Expenditures and Financing Uses				
800 Other Objects				
830 Interest				3,194,610.57
880 Refunds of Prior Years' Receipts				98,896.04
Total Other Objects				\$3,293,506.61
900 Other Uses of Funds				
910 Redemption of Principal				6,590,000.00
Total Other Uses of Funds				\$6,590,000.00
Total 5100 Debt Service / Other Expenditures and Financing Uses				\$9,883,506.61

LEA : 104107903 Seneca Valley SD

Printed 4/26/2018 10:57:27 AM

General Fund (10)

5110 Debt Service

Elementary

Secondary

Federal

Total

800 Other Objects

830 Interest

3,194,610.57

Total Other Objects

\$3,194,610.57

900 Other Uses of Funds

910 Redemption of Principal

6,590,000.00

Total Other Uses of Funds

\$6,590,000.00

Total 5110 Debt Service

\$9,784,610.57

LEA : 104107903 Seneca Valley SD

Printed 4/26/2018 10:57:27 AM

General Fund (10)

	<u>Elementary</u>	<u>Secondary</u>	<u>Federal</u>	<u>Total</u>
5130 Refund of Prior Year Revenues / Receipts				
800 <u>Other Objects</u>				
880 Refunds of Prior Years' Receipts				98,896.04
Total Other Objects				\$98,896.04
Total 5130 Refund of Prior Year Revenues / Receipts				\$98,896.04

Other Capital Projects Fund (39)

4000 Facilities Acquisition, Construction and Improvement Services

Total

300 Purchased Professional and Technical Services

330 Other Professional Services

299,965.10

390 Other Purchased Professional and Technical Services

48,890.84

Total Purchased Professional and Technical Services

\$348,855.94

400 Purchased Property Services

450 Construction Services

4,809,684.06

Total Purchased Property Services

\$4,809,684.06

Total 4000 Facilities Acquisition, Construction and Improvement Services

\$5,158,540.00

Other Capital Projects Fund (39)

4400 Architecture and Engineering Services / Educational Specifications – Improvements

Elementary

Secondary

Federal

Total

300 Purchased Professional and Technical Services

330 Other Professional Services

299,965.10

Total Purchased Professional and Technical Services

\$299,965.10

Total 4400 Architecture and Engineering Services / Educational Specifications – Improvements

\$299,965.10

Other Capital Projects Fund (39)

	<u>Elementary</u>	<u>Secondary</u>	<u>Federal</u>	<u>Total</u>
4600 Existing Building Improvement Services				
300 <u>Purchased Professional and Technical Services</u>				
390 Other Purchased Professional and Technical Services				48,890.84
Total Purchased Professional and Technical Services				\$48,890.84
400 <u>Purchased Property Services</u>				
450 Construction Services				4,809,684.06
Total Purchased Property Services				\$4,809,684.06
Total 4600 Existing Building Improvement Services				\$4,858,574.90

Debt Service Fund (40)

2000 Support Services

300 Purchased Professional and Technical Services

330 Other Professional Services

265,946.00

Total Purchased Professional and Technical Services

\$265,946.00

Total 2000 Support Services

\$265,946.00

LEA : 104107903 Seneca Valley SD

Printed 4/26/2018 10:57:24 AM

Debt Service Fund (40)

2900 Other Support Services

Elementary

Secondary

Federal

Total

300 Purchased Professional and Technical Services

330 Other Professional Services

265,946.00

Total Purchased Professional and Technical Services

\$265,946.00

Total 2900 Other Support Services

\$265,946.00

Debt Service Fund (40)

2910 Support Services Not Listed Elsewhere In the 2000 Series

Elementary

Secondary

Federal

Total

300 Purchased Professional and Technical Services

330 Other Professional Services

265,946.00

Total Purchased Professional and Technical Services

\$265,946.00

Total 2910 Support Services Not Listed Elsewhere In the 2000 Series

\$265,946.00

Debt Service Fund (40)

5000 Other Expenditures and Financing Uses

Total

800 Other Objects

830 Interest

322,774.00

Total Other Objects

\$322,774.00

900 Other Uses of Funds

910 Redemption of Principal

17,545,000.00

Total Other Uses of Funds

\$17,545,000.00

Total 5000 Other Expenditures and Financing Uses

\$17,867,774.00

Debt Service Fund (40)

5100 Debt Service / Other Expenditures and Financing Uses

Elementary

Secondary

Federal

Total

800 Other Objects

830 Interest

322,774.00

Total Other Objects

\$322,774.00

900 Other Uses of Funds

910 Redemption of Principal

17,545,000.00

Total Other Uses of Funds

\$17,545,000.00

Total 5100 Debt Service / Other Expenditures and Financing Uses

\$17,867,774.00

Debt Service Fund (40)

5120 Debt Service – Refunded Bonds

Elementary

Secondary

Federal

Total

800 Other Objects

830 Interest

322,774.00

Total Other Objects

\$322,774.00

900 Other Uses of Funds

910 Redemption of Principal

17,545,000.00

Total Other Uses of Funds

\$17,545,000.00

Total 5120 Debt Service – Refunded Bonds

\$17,867,774.00

	<u>General Fund(10)</u>	<u>Public Purpose Trust(27)</u>	<u>Other Compt Approved (28)</u>	<u>Athletic / Activity(29)</u>	<u>Capital Reserve (690. 1850)(31)</u>
1000 Instruction					
1100 Regular Programs - Elementary / Secondary	52,268,789.53				
1200 Special Programs - Elementary / Secondary	17,936,809.98				
1300 Vocational Education	3,259,237.95				
1400 Other Instructional Programs - Elementary / Secondary	279,882.59				
Total Instruction	\$73,744,720.05				
2000 Support Services					
2100 Support Services - Students	3,276,144.54				
2200 Support Services - Instructional Staff	2,807,089.27				
2300 Support Services - Administration	6,116,827.03				
2400 Support Services - Pupil Health	1,118,642.05				
2500 Support Services - Business	588,519.40				
2600 Operation and Maintenance of Plant Services	7,298,196.48				
2700 Student Transportation Services	7,770,607.02				
2800 Support Services - Central	528,990.09				
2900 Other Support Services	2,551,005.01				
Total Support Services	\$32,056,020.89				
3000 Operation of Non-Instructional Services					
3200 Student Activities	2,054,951.58				
3300 Community Services	4,239.11				
Total Operation of Non-Instructional Services	\$2,059,190.69				
4000 Facilities Acquisition, Construction and Improvement Services					
4200 Existing Site Improvement Services	1,440.00				
4400 Architecture and Engineering Services / Educational Specifications - Improvements					
4600 Existing Building Improvement Services	174,102.64				
Total Facilities Acquisition, Construction and Improvement Services	\$175,542.64				
5000 Other Expenditures and Financing Uses					
5100 Debt Service / Other Expenditures and Financing Uses	9,883,506.61				
Total Other Expenditures and Financing Uses	\$9,883,506.61				
TOTAL ACTUAL EXPENDITURES & OTHER FINANCING USES	\$117,918,980.88				

	<u>Capital Reserve (1431)(32)</u>	<u>Other Capital Projects Fund(39)</u>	<u>Debt Service(40)</u>	<u>Permanent(90)</u>	<u>Total</u>
1000 Instruction					
1100 Regular Programs - Elementary / Secondary					52,268,789.53
1200 Special Programs - Elementary / Secondary					17,936,809.98
1300 Vocational Education					3,259,237.95
1400 Other Instructional Programs - Elementary / Secondary					279,882.59
Total Instruction					\$73,744,720.05
2000 Support Services					
2100 Support Services - Students					3,276,144.54
2200 Support Services - Instructional Staff					2,807,089.27
2300 Support Services - Administration					6,116,827.03
2400 Support Services - Pupil Health					1,118,642.05
2500 Support Services - Business					588,519.40
2600 Operation and Maintenance of Plant Services					7,298,196.48
2700 Student Transportation Services					7,770,607.02
2800 Support Services - Central					528,990.09
2900 Other Support Services			265,946.00		2,816,951.01
Total Support Services			\$265,946.00		\$32,321,966.89
3000 Operation of Non-Instructional Services					
3200 Student Activities					2,054,951.58
3300 Community Services					4,239.11
Total Operation of Non-Instructional Services					\$2,059,190.69
4000 Facilities Acquisition, Construction and Improvement Services					
4200 Existing Site Improvement Services					1,440.00
4400 Architecture and Engineering Services / Educational Specifications - Improvements		299,965.10			299,965.10
4600 Existing Building Improvement Services		4,858,574.90			5,032,677.54
Total Facilities Acquisition, Construction and Improvement Services		\$5,158,540.00			\$5,334,082.64
5000 Other Expenditures and Financing Uses					
5100 Debt Service / Other Expenditures and Financing Uses			17,867,774.00		27,751,280.61
Total Other Expenditures and Financing Uses			\$17,867,774.00		\$27,751,280.61
TOTAL ACTUAL EXPENDITURES & OTHER FINANCING USES		\$5,158,540.00	\$18,133,720.00		\$141,211,240.88

LEA : 104107903 Seneca Valley SD

Printed 4/26/2018 10:57:36 AM

PSERS Salary Data (Salary Data should relate to the General Fund only)

Amount Description	Amount
Total Salary Base for salaries subject to PSERS withholding	50,838,040.81
Total Federally Funded salaries subject to PSERS withholding	758,598.67
	<hr/>

Title I Expenditure Data

Amount Description	Amount
Expenditures Funded with Current Title I Funds	393,289.00
Expenditures Funded with Carry over Title I Funds	
Total Title I Expenditure Data	<hr/> \$393,289.00 <hr/>

Title I ARRA Amount

Amount Description	Amount
Portion of Total Title I Expenditures funded with ARRA Title I	<hr/>

Benefits for Staff Relative to Collective Bargaining Agreements

	OBJECT	COVERED	NOT COVERED	TOTAL
10 General Fund	No Self Insurance data to report			
	211 Medical Insurance	10,254,679.55	834,234.00	11,088,913.55
	212 Dental Insurance	463,750.56	43,354.08	507,104.64
	215 Eye Care Insurance	69,784.20	6,269.40	76,053.60
	216 Prescription Insurance			
	271 Self-Insurance Medical Benefits			
	272 Self-Insurance Dental Benefits			
	275 Self-Insurance Eye Care Benefits			
	276 Self-Insurance Prescription Benefits			
	FUND TOTAL	\$10,788,214.31	\$883,857.48	\$11,672,071.79
50 Enterprise Fund	No Self Insurance data to report			
	211 Medical Insurance		57,537.96	57,537.96
	212 Dental Insurance		1,864.80	1,864.80
	215 Eye Care Insurance		2,816.40	2,816.40
	216 Prescription Insurance			
	271 Self-Insurance Medical Benefits			
	272 Self-Insurance Dental Benefits			
	275 Self-Insurance Eye Care Benefits			
	276 Self-Insurance Prescription Benefits			
	FUND TOTAL		\$62,219.16	\$62,219.16
60 Internal Service Fund	No Self Insurance data to report			
	211 Medical Insurance			
	212 Dental Insurance			
	215 Eye Care Insurance			
	216 Prescription Insurance			
	271 Self-Insurance Medical Benefits			
	272 Self-Insurance Dental Benefits			
	275 Self-Insurance Eye Care Benefits			
	276 Self-Insurance Prescription Benefits			
	FUND TOTAL			
Total of All Funds		\$10,788,214.31	\$946,076.64	\$11,734,290.95

LEA : 104107903 Seneca Valley SD

Printed 4/26/2018 10:57:38 AM

Function	Special Education (Prior Year)	Nonspecial Education (Prior Year)	Total (Prior Year)	Special Education (Current Year)	Nonspecial Education (Current Year)	Total (Current Year)
2120 Guidance Services	304,301.39	1,724,374.52	2,028,675.91	342,934.55	1,943,295.75	2,286,230.30
2140 Psychological Services	73,283.87	740,981.32	814,265.19	81,621.40	825,283.10	906,904.50
2150 Speech Pathology and Audiology Services	3,939.94	22,326.31	26,266.25	3,823.26	21,665.13	25,488.39
2160 Social Work Services						
2260 Instruction and Curriculum Development Services	159,655.37	904,713.74	1,064,369.11	167,081.82	946,796.99	1,113,878.81
2350 Legal and Accounting Services	7,309.39	41,419.85	48,729.24	5,695.05	32,271.93	37,966.98
2420 Medical Services	3,310.30	7,368.09	10,678.39	8,314.26	18,505.94	26,820.20
2440 Nursing Services	308,187.59	685,965.92	994,153.51	338,241.57	752,860.28	1,091,101.85
2700 Student Transportation Services	1,291,670.05	6,262,816.94	7,554,486.99	1,286,916.04	6,483,690.98	7,770,607.02
Total	\$2,151,657.90	\$10,389,966.69	\$12,541,624.59	\$2,234,627.95	\$11,024,370.10	\$13,258,998.05

LEA : 104107903 Seneca Valley SD

Printed 4/26/2018 10:57:39 AM

(PRINCIPAL AMOUNTS ONLY)

GOVERNMENTAL FUNDS/ ACTIVITIES

	Short-Term Borrowing	General Obligation Bonds/Notes	Authority Building Obligations	Other Long-Term Debt	Other Post-Employment Benefits (OPEB)	Compensated Absences	Net Pension Liability	Total
1. Debt at Beginning of Fiscal Year		94,330,000.00			16,541,408.00	993,388.25	156,594,200.00	268,458,996.25
2. Additional Debt Incurred During Year		17,450,000.00			2,089,520.00	139,337.75	27,421,380.00	47,100,237.75
3. Retirements and Repayments		24,135,000.00				96,514.25		24,231,514.25
4. Debt at End of Fiscal Year		87,645,000.00			18,630,928.00	1,036,211.75	184,015,580.00	291,327,719.75
5. Accreted Interest at End Of Fiscal Year								
6. Total Debt and Accreted Interest		87,645,000.00			18,630,928.00	1,036,211.75	184,015,580.00	291,327,719.75
7. Current Portion P&I - Due within 1 year		10,002,780.00						10,002,780.00
8. Interest Paid during current fiscal year		3,209,672.42						3,209,672.42

(PRINCIPAL AMOUNTS ONLY)

PROPRIETARY FUNDS

	Short-Term Borrowing	General Obligation Bonds/Notes	Authority Building Obligations	Other Long-Term Debt	Other Post-Employment Benefits (OPEB)	Compensated Absences	Net Pension Liability	Total
1. Debt at Beginning of Fiscal Year							3,195,800.00	3,195,800.00
2. Additional Debt Incurred During Year							559,620.00	559,620.00
3. Retirements and Repayments								
4. Debt at End of Fiscal Year							3,755,420.00	3,755,420.00
5. Accreted Interest at End Of Fiscal Year								
6. Total Debt and Accreted Interest							3,755,420.00	3,755,420.00
7. Current Portion P&I - Due within 1 year								
8. Interest Paid during current fiscal year								

Total Principal and Interest Payments Made by Your School - All Funds

Function	Fund		Principal (910)	Principal (920)	Interest (830)	Total (Principal +Interest)	Misc Other Uses (990)
5110	10	General Fund	6,590,000.00		3,194,610.57	9,784,610.57	
5110	20	Special Revenue Funds					
5110	30	Capital Projects Funds					
5110	40	Debt Service Fund					
5110	90	Permanent Fund					
5120	10	General Fund					
5120	20	Special Revenue Funds					
5120	30	Capital Projects Funds					
5120	40	Debt Service Fund	17,545,000.00		322,774.00	17,867,774.00	
Total Debt Payments - Governmental Funds			\$24,135,000.00		\$3,517,384.57	\$27,652,384.57	

Function	Fund		Principal (910)	Principal (920)	Interest (830)	Total (Principal +Interest)
5110	50	Enterprise Fund				
5110	60	Internal Service Fund				
5120	50	Enterprise Fund				
5120	60	Internal Service Fund				
Total Debt Payments - Proprietary Funds						

LEA : 104107903 Seneca Valley SD

Printed 4/26/2018 10:57:39 AM

Debt Details
Governmental Funds/ Activities

Debt Category	Debt Issue Date (MM/YYYY)	Principal Amounts Only			Debt at End of Fiscal Year	Current Portion Due Within One Year (Principal and Interest)	Interest Paid During Fiscal Year
		Debt at Beginning of Fiscal Year	Additions	Reductions / Repayments			
General Obligation Bonds/Notes – CIB	11/2016		9,350,000.00	300,000.00	9,050,000.00	483,450.00	47,140.00
General Obligation Bonds/Notes – CIB	11/2016		8,100,000.00	1,440,000.00	6,660,000.00	1,666,600.00	61,518.67
General Obligation Bonds/Notes – CIB	05/2015	25,565,000.00		860,000.00	24,705,000.00	4,698,937.50	1,021,837.50
General Obligation Bonds/Notes – CIB	05/2015	1,960,000.00			1,960,000.00	98,000.00	98,000.00
General Obligation Bonds/Notes – CIB	05/2015	26,935,000.00			26,935,000.00	1,208,062.50	1,208,062.50
General Obligation Bonds/Notes – CIB	12/2014	9,995,000.00		5,000.00	9,990,000.00	258,845.00	253,967.50
General Obligation Bonds/Notes – CIB	05/2013	4,335,000.00		3,430,000.00	905,000.00	914,050.00	52,400.00
General Obligation Bonds/Notes – CIB	10/2012	5,140,000.00		5,000.00	5,135,000.00	112,325.00	107,425.00
General Obligation Bonds/Notes – CIB	05/2012	1,015,000.00		160,000.00	855,000.00	178,170.00	21,370.00
General Obligation Bonds/Notes – CIB	05/2012	995,000.00		160,000.00	835,000.00	177,740.00	20,940.00
General Obligation Bonds/Notes – CIB	04/2012	810,000.00		195,000.00	615,000.00	206,600.00	16,200.00
General Obligation Bonds/Notes – CIB	12/2011	9,545,000.00		9,545,000.00			138,553.75
General Obligation Bonds/Notes – CIB	06/2010	900,000.00		900,000.00			17,092.50
General Obligation Bonds/Notes – CIB	06/2010	1,265,000.00		1,265,000.00			24,027.50
General Obligation Bonds/Notes – CIB	02/2007	5,870,000.00		5,870,000.00			121,137.50
Compensated Absences		993,388.25	139,337.75	96,514.25	1,036,211.75		
Other Post-Employment Benefits (OPEB)		16,541,408.00	2,089,520.00		18,630,928.00		
Net Pension Liability		156,594,200.00	27,421,380.00		184,015,580.00		
Totals for Debt Entered:		\$268,458,996.25	\$47,100,237.75	\$24,231,514.25	\$291,327,719.75	\$10,002,780.00	\$3,209,672.42

Bond Details
Proprietary Funds

Debt Category	Debt Issue Date (MM/YYYY)	Principal Amounts Only			Debt at End of Fiscal Year	Current Portion Due Within One Year (Principal and Interest)	Interest Paid During Fiscal Year
		Debt at Beginning of Fiscal Year	Additions	Reductions / Repayments			
Net Pension Liability		3,195,800.00	559,620.00		3,755,420.00		
Totals for Debt Entered:		\$3,195,800.00	\$559,620.00		\$3,755,420.00		

General Fund (10)

Section 1: Tuition/Purchased Services as Reported within Expenditure Detail

	Amount
Tuition Reported in General Fund Expenditures 1000-560	4,028,627.34
Purchased Services in General Fund Expenditures 1000-594 and 1000-597	1,011.77
Section 1 Total	\$4,029,639.11

Section 2: Tuition Paid to Institution Types During Fiscal Year

	Tuition Paid For Nonspecial Education	Tuition Paid For Special Education	Total
1 1306 Institutions		133,068.97	133,068.97
2 Institutionalized Children's Programs			
3 Juveniles Incarcerated in Adult Facilities			
4 Residential Treatment Facilities	9,142.50	463,008.94	472,151.44
5 Other Local Education Agencies			
6 Brick and Mortar Charter Schools	356,603.05	128,680.88	485,283.93
7 Cyber Charter Schools	541,273.83	484,761.13	1,026,034.96
8 Career and Technology Centers	544,843.06		544,843.06
9 Approved Private Schools		1,356,583.17	1,356,583.17
10 PA Chartered Schools for the Deaf and Blind			
11 Private Residential Rehabilitative Institutions	6,818.84	4,854.74	11,673.58
12 Juvenile Detention Centers			
13 Special Program Jointures			
14 Other Tuition Not Included Elsewhere In This Section			
Section 2 Total	\$1,458,681.28	\$2,570,957.83	\$4,029,639.11

LEA : 104107903 Seneca Valley SD

Printed 4/26/2018 10:57:40 AM

Food Service / Cafeteria Operations Fund (51)

3000 Operation of Non-Instructional Services

Total

100 Personnel Services – Salaries

100 Personnel Services – Salaries 946,365.00

Total Personnel Services – Salaries \$946,365.00

200 Personnel Services – Employee Benefits

210 Group Insurance – Contracted Provider 70,829.16

220 Social Security Contributions 72,012.52

230 PSERS Retirement Contributions 386,657.12

250 Unemployment Compensation 595.76

260 Workers' Compensation 2,528.44

Total Personnel Services – Employee Benefits \$532,623.00

300 Purchased Professional and Technical Services

329 Professional Educational Services – Other 2,899.00

Total Purchased Professional and Technical Services \$2,899.00

400 Purchased Property Services

420 Utility Services 101,376.85

430 Repairs and Maintenance Services 41,390.15

Total Purchased Property Services \$142,767.00

500 Other Purchased Services

540 Advertising 2,819.32

580 Travel 1,229.75

599 Other Miscellaneous Purchased Services 292.93

Total Other Purchased Services \$4,342.00

600 Supplies

610 General Supplies 270,805.56

630 Food 831,171.44

Total Supplies \$1,101,977.00

700 Property

740 Depreciation 47,245.00

Total Property \$47,245.00

800 Other Objects

810 Dues and Fees 1,228.00

Total Other Objects \$1,228.00

Total 3000 Operation of Non-Instructional Services \$2,779,446.00

LEA : 104107903 Seneca Valley SD

Printed 4/26/2018 10:57:40 AM

Food Service / Cafeteria Operations Fund (51)

	<u>Elementary</u>	<u>Secondary</u>	<u>Federal</u>	<u>Total</u>
3100 Food Services				
100 Personnel Services – Salaries				
100 Personnel Services – Salaries				946,365.00
Total Personnel Services – Salaries				\$946,365.00
200 Personnel Services – Employee Benefits				
210 Group Insurance – Contracted Provider				70,829.16
220 Social Security Contributions				72,012.52
230 PSERS Retirement Contributions				386,657.12
250 Unemployment Compensation				595.76
260 Workers' Compensation				2,528.44
Total Personnel Services – Employee Benefits				\$532,623.00
300 Purchased Professional and Technical Services				
329 Professional Educational Services – Other				2,899.00
Total Purchased Professional and Technical Services				\$2,899.00
400 Purchased Property Services				
420 Utility Services				101,376.85
430 Repairs and Maintenance Services				41,390.15
Total Purchased Property Services				\$142,767.00
500 Other Purchased Services				
540 Advertising				2,819.32
580 Travel				1,229.75
599 Other Miscellaneous Purchased Services				292.93
Total Other Purchased Services				\$4,342.00
600 Supplies				
610 General Supplies				270,805.56
630 Food			600,704.19	831,171.44
Total Supplies			\$600,704.19	\$1,101,977.00
700 Property				
740 Depreciation				47,245.00
Total Property				\$47,245.00
800 Other Objects				
810 Dues and Fees				1,228.00
Total Other Objects				\$1,228.00
Total 3100 Food Services			\$600,704.19	\$2,779,446.00

	<u>Food Service(51)</u>	<u>Child Care Operations(52)</u>	<u>Other Enterprise(58)</u>	<u>Internal Service(60)</u>	<u>Total</u>
3000 <u>Operation of Non-Instructional Services</u>					
3100 Food Services	2,779,446.00				2,779,446.00
Total Operation of Non-Instructional Services	\$2,779,446.00				\$2,779,446.00
TOTAL ACTUAL EXPENDITURES & OTHER FINANCING USES	\$2,779,446.00				\$2,779,446.00