



Community Program Guide

Fall 2024

View full
guide here



Bowers School Farm

1219 E. Square Lake Rd.
Bloomfield Hills, MI
248.341.6475
schoolfarm.org



Johnson Nature Center

3325 Franklin Rd.
Bloomfield Twp., MI
248.341.6485
johnsonnaturecenter.org

BOWERS SCHOOL FARM

Adult & Youth Programs



FALL 2024
SEP | OCT | NOV



Girl Scout Badge-A-Palooza Day

9/29

10:00a-3:00p

Earn your next Girl Scout badge by joining our fun and educational event with hands-on activities and exciting learning opportunities. Whether exploring nature, crafting, or learning new skills, this event promises an unforgettable experience for all Girl Scouts.

Check website for fee

Pre-Registration Required

Daisies, Brownies and Juniors



The Great Michigan Compost Tour

9/19 6:30-8:30p

Join us as we host a tour during The Great Michigan Compost Tour. Visit our various composting system's and receive a hands-on demonstration!

Donations appreciated

No Pre-Registration Necessary

All Ages



BOWERS SCHOOL FARM

Early Childhood



FALL 2024
SEP | OCT | NOV



You, Me, and the Barns

Tuesdays

9/24, 10/15, 11/12, 10:00-11:30a

Parents and caregivers are invited to bring their toddlers to explore the farm and discover the ways agriculture enriches our lives. Children aged 2-3 can immerse themselves in the natural world, using their senses to experience firsthand the joys of farm life and participate in educational activities tailored just for them based on monthly themes.

\$20 per adult/child pair.

[Pre-Registration Required](#)

Ages 2-3 w/an adult.



Pasture Pals

Wednesdays

9/25, 10/16, 11/13, 10:00-11:30a

An immersive, hands-on, getting dirty, learning big, and exploring what it takes to help keep the farm buzzing along! It takes many hands to make light work and YOU get to be part of the team! Activities are based on monthly themes.

\$20 per adult/child pair.

[Pre-Registration Required](#)

Ages 3-5 w/an adult.



Love a Pony

September 24

4:00-5:30p

October 15

4:00-5:30p

Join us in this fun-filled session where children ages 3-5 will work hands-on with our ponies. Children will learn how we care for our ponies and ride a pony while building skills that involve confidence, independence, safety, and fun!

Children must be under 55 lbs. for the health and safety of our ponies

\$45 per adult/child pair.


[Pre-Registration Required](#)

Ages 3-5 w/ an adult.

BOWERS SCHOOL FARM

Events

Getting Outdoors with your Girl Scouts



Sunday, September 29

GIRL SCOUTS BADGE-A-PALOOZA

Calling all young adventurers and farm enthusiasts! Get ready for an unforgettable experience at Bowers School Farm!

Outdoor Art


Animal Observer

Outdoor Adventurer

Mini-Badges: Shelter Building, Fire Building

Flowers

BOWERS SCHOOL FARM
HOOPERVILLE GOLF COURSE



girlscouts of southeastern michigan




Featuring Friends of Bowers Farm BEER GARDEN

October 5 - 6, 2024

Details at www.schoolfarm.org

WAGON RIDES • ANIMALS • FOOD TRUCKS • FUN ACTIVITIES
CIDER • PUMPKINS • LIVE ENTERTAINMENT • MAGIC
FARM FRESH FARE • CORN HOLE TOURNAMENT • AND MORE!

HOSTED BY FRIENDS OF BOWERS FARM



CRAFT BEER & BOURBON FESTIVAL

OCTOBER 4, 2024 AT 7-10P

ADULTS 21+ ONLY

SCHOOLFARM.ORG/FALL-EVENTS

JOHNSON NATURE CENTER

Adult & Family Programs



FALL 2024
SEP | OCT | NOV



Sunday Stroll Series

9/1, 10/6, 11/3

3:00-4:30p

Whether you saunter or stroll, join us on the trails. Coffee & warm drinks are available at 3:00p.

Donations appreciated

No Pre-Registration Necessary

All Ages



Forest To Table

9/14

5:30-9:30p

Chef Chris Gadulka (Sylvan Table) and Chef Johnny Prepolec (Alchemi) will give guests a new perspective on cooking and eating for wellness and sustainability by utilizing forest gastronomy dishes. Featuring six courses, the chefs will intertwine Michigan native and invasive species of flora and fauna as ingredients in the dishes served throughout a quarter-mile trail.

\$225 / person

Pre-registration required

Ages 21+

Birds and Blooms Naturalist Series

9/17, 10/15, & 11/19

9:00-11:00a

Join us on a guided hike as we explore the beauty, diversity, and interconnectedness of avian life and floral wonders in this captivating adventure through nature's canvas.

\$12 / person

Pre-Registration Required

Ages 5+

Craft Series: Make your own fishing pole

9/28

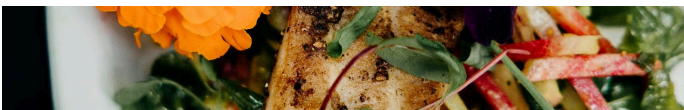
1:00-3:00p

Create your own fishing pole craft using simple materials like sticks, string, and paper clips for hooks, and enjoy a fun, hands-on project that sparks creativity and imagination. This activity teaches basic fishing concepts & provides a great opportunity for kids to engage with nature and develop their crafting skills. Test out your pole and fish too!

\$15 / person

Pre-registration required

Ages 7+



JOHNSON NATURE CENTER

Adult & Family Programs



FALL 2024
SEP | OCT | NOV



Volunteer Tree Planting

10/12 10:00a-12:00p

Join us in planting 25 sugar maple trees. The planting is part of a five-year-long program to plant sugar maple trees and reestablish and expand the sugar bush at the nature center.

FREE

Pre-Registration Required

Ages 5+



DTE
Foundation



Girl Scout Badge-A-Palooza Day (NEW)

10/19 10:00a-3:00p

Earn your next Girl Scout badge by joining our fun and educational event with hands-on activities and exciting learning opportunities. Whether exploring nature or learning new skills, this event promises an unforgettable experience for all Girl Scouts.

Check website for fee

Pre-Registration Required

Daisies, Brownies and Juniors



Night Hike: Bats

10/12 7:00-8:00p

Join us for an exciting night hike to discover the fascinating world of bats, where you'll learn about their unique behaviors and crucial role in our ecosystem. Experience the thrill of observing these nocturnal creatures in their natural habitat and uncover the secrets of their nighttime activities.

\$8 / person

Pre-Registration Required

Ages 7+



Log Cabin Living Open House

10/19 9:00a-2:00p

Step back in time and experience the charm of pioneer life at our Log Cabin Living Open House, where you can explore authentic cabins and learn about the daily lives of early settlers. Enjoy hands-on activities, historical demonstrations, and storytelling that bring the past to life.

FREE

Pre-Registration Required

All Ages

JOHNSON NATURE CENTER

Early Childhood



FALL 2024
SEP | OCT | NOV



TreeSchool

2024-25 School Year

Tuesdays/Thursdays OR Wednesdays

9:30a-1:30p

Every child deserves a “happy place” to gain independence, make friends, develop unique skills and interests, and learn to contribute to a community. TreeSchool, our drop-off early childhood program, provides children with such a place. With 40 acres of forest, pond, and prairie to explore, children develop lifelong skills through meaningful play and project-based learning experiences.

[Join the Early Childhood email list for enrollment announcements!](#)

Ages 3-4

Acorns & Oaks: Family Workshop

10/28 & 11/18

9:30-11:30a

The best happy places are ones that are shared. In Acorns & Oaks Workshop, caregivers will join students on their nature-based learning journey while learning about the impacts of connecting children to the outdoors. Join us to build a toolkit of knowledge for how to adopt these practices in your everyday life.

\$24 / pair

[Pre-Registration Required](#)

Ages 3-5

You, Me, and the Trees

Fridays (see schedule for dates)

10:00-11:30a

Parents and caregivers are invited to explore the outdoors with their toddlers and observe the many ways nature can help us learn. Children 2-3 years old will have the opportunity to embrace the wonders of nature through their senses and engage in unique learning experiences.

\$12 / child

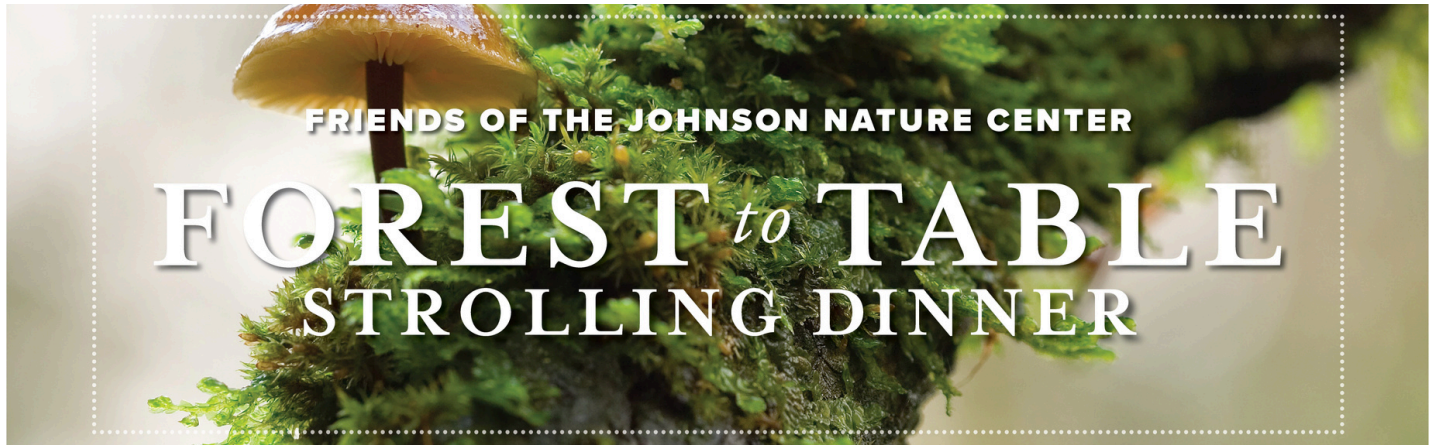
[Pre-Registration Required](#)

Ages 2-3



JOHNSON NATURE CENTER

Events



DIVERSE LEARNERS' DAYS

WINTER | SPRING | SUMMER | FALL



This specialized program is designed for children with special needs to provide a more accessible experience for the child and their family who might be hesitant to visit due to a child's complex learning needs or challenges (i.e. sensory needs/responses, language, emotional or social concerns, cognitive learning challenges, physical needs, etc.). During this collaborative program, the guide will work directly with the children (4:1 ratio) to provide specialized instruction and accommodation with animals, gardens, and farm/nature activities.



SCOUTS & SMALL GROUPS

WINTER | SPRING | SUMMER | FALL



Explore various focused topics, from bugs to plants, through hands-on, inquiry-based learning experiences.

We've designed these programs to meet scout badge requirements and can adapt to meet your group's needs.



CONNECT & GIVE

Join us as we seek to give everyone the opportunity to enjoy nature.

Johnson Nature Center is working toward its strategic plan initiative to support accessibility by adding:

- Trackchair
- ADA trail



BECOME A VOLUNTEER

OUR VOLUNTEERS SUPPORT OUR CONSERVATION EFFORTS, EVENTS, EDUCATIONAL PROGRAMS, ANIMAL CARE, AND MORE. CONTRIBUTE AND MAKE AN IMPACT THROUGH SERVICE TO STUDENTS AND THE COMMUNITY.

BECOME A FRIEND

THE FRIENDS' GROUPS OF BOWERS SCHOOL FARM AND JOHNSON NATURE CENTER SUPPORT OUR MISSION THROUGH VOLUNTEERISM AND FUNDRAISING EFFORTS. JOIN TO MAKE A DIFFERENCE TODAY!

CHILDREN'S Discovery Garden

BOWERS SCHOOL FARM

Bloomfield Hills Schools has started planning the required infrastructure with the necessary professionals to complete the project in alignment with funding from the bond 2020.

We have been informed that installation would begin in 2025 with completion in 2026.

We are continuing to fundraise to support the many interactive features of the Garden along with creating an endowment to ensure continued prosperity thereof.

Your past and continued support is greatly appreciated.



SIGN UP FOR OUR NEWSLETTERS & LEARN MORE!
SCHOOLFARM.ORG & JOHNSONNATURECENTER.ORG

