



COUNTRYSIDE ELEMENTARY SCHOOL

INTERVIEW FOR OPM SERVICES

dw
DORE + WHITTIER

Our Team

Mike Burton



Project Director

- Zero Net Energy experience
- Insight into options
- Schedule & cost
- Risk management
- Team accountability

Steve Brown



Senior Project Manager

- Schedule
- Project Plans
- Sustainable Design
- Construction Oversight

Christina Dell Angelo



Project Manager – Process

- Process management
- SBC leadership
- Meeting manager & facilitator
- Communication manager

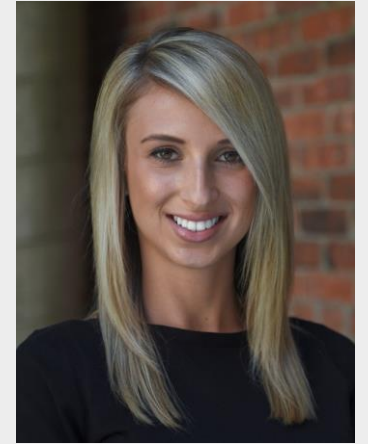
Mike Cox



Project Manager – Controls

- Financial manager
- Budget management
- Change management

Rachel Rincon

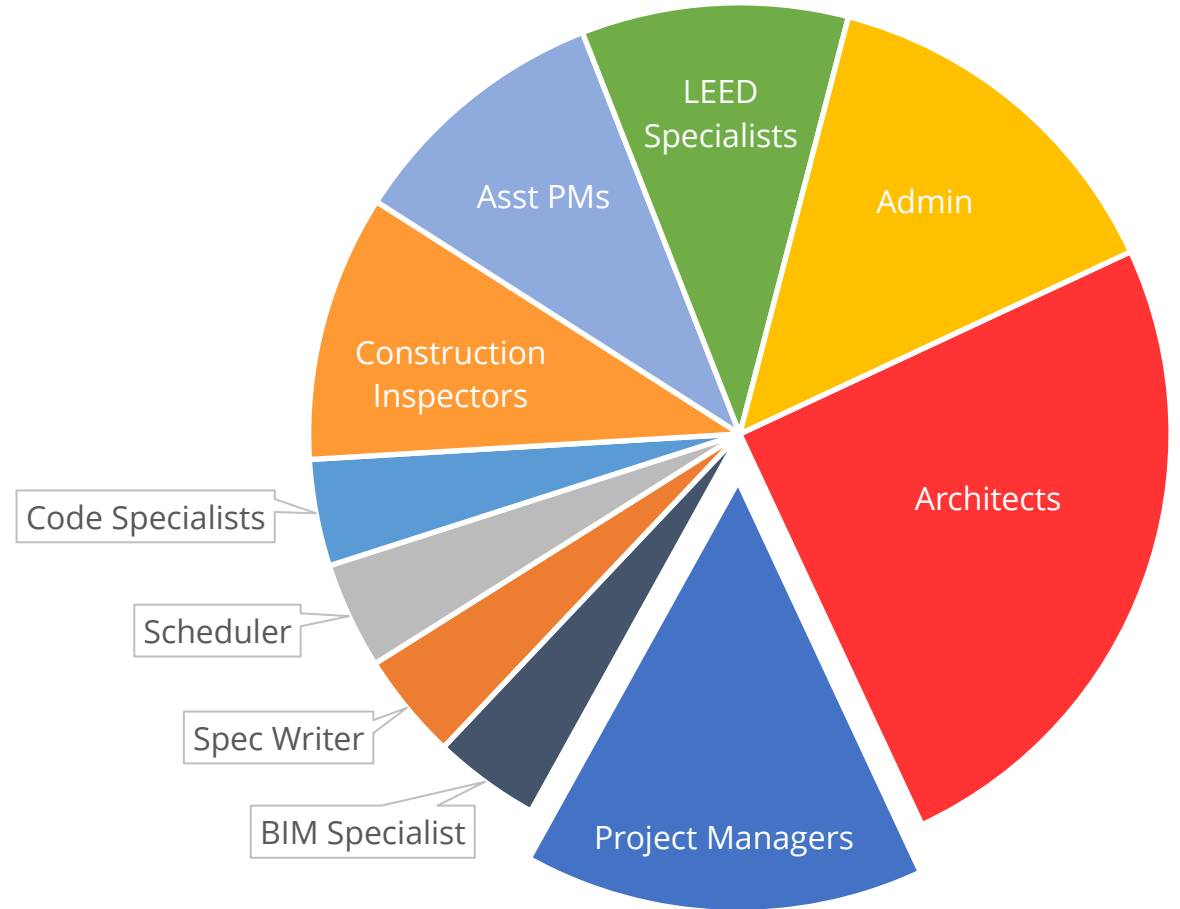


Assistant Project Manager

- Documentation & record management
- Meeting minutes
- Communication coordinator

About **DORE** + **WHITTIER**

- ✓ Massachusetts school specialists
- ✓ Deep bench with wide range of expertise
- ✓ Detailed & knowledgeable process managers
- ✓ Successful working with the MSBA
- ✓ Team leaders & collaborators



Core Team + In-House Resources + Consultants



Mike Burton
Project Director



Steve Brown
Senior Project Manager



Christina Dell Angelo
Project Manager - Process



Michael Cox
Project Manager - Controls




Rachel Rincon
Assistant Project Manager



Larry Erekson
On-Site Project Representative



Dave Mentzer
Code Review & Sustainability



Jason Boone
Ed Programming Review

Peter Bradley
PM&C
Cost Estimating

Albert R. Russell,
Architect
Design Review

Victor Verma
RSV Assoc.
Structural Peer Review

Key Personnel Experience

Key Personnel	Elementary Schools	MSBA Projects
Mike Burton	5	6
Steve Brown	2	7
Christina Dell Angelo	5	5
Mike Cox	2	5
Rachel Rincon	3	4



Welch Elementary, Peabody

Overview

- Renovation/Addition
- 390 Students
- MSBA
- CM at Risk

Similarities

- Neighborhood school
- Tight existing site

Lessons / Major Contributions

- Swing space solution
- Sustainability goals
- Successful City Council Approval



Maria Hastings School, Lexington

Overview

- New Elementary School
- 645 Students
- MSBA
- CM at Risk

Similarities

- New School
- Existing Site
- Wetlands
- Net Positive Energy

Lessons / Major Contributions

- Achieving Successful Vote
- Building Siting
- Maintaining Schedule
- Net Positive Energy Experience



Manchester Memorial School

Overview

- New Elementary School
- 365 Students
- MSBA
- CM at Risk

Similarities

- Circulation issues
- Tight Existing Site
- Wetlands

Lessons / Major Contributions

- Successful Vote (2-member district)
- Wetlands/ConComm/Planning board
- Site Selection
- Phasing/Site Safety
- Maintaining Schedule
- Mitigating Change Orders



Multiple Enrollments

8 Multiple Enrollment Projects Firm-Wide

FINDING A BALANCE:
Flexibility
Project Cost
Community Approval
Operational Needs
Life Cycle O&M Costs

Gates Middle, Scituate



Northbridge Elementary



Pentucket Middle/High, W. Newbury



East Gloucester Elementary



Park Ave Elementary, Webster



Mulcahey Elementary, Taunton



Hanlon-Deerfield Elementary, Westwood



Consentino Middle, Haverhill



Community Engagement



build trust

William A. Welch Elementary School Building Project

English Español Português

Home Team About Design Cost SBC News FAQ Calendar Contact



FREQUENTLY ASKED QUESTIONS

What will the project cost?

The current estimated total cost for the project is \$21.6 million.

When will construction start?

Construction will commence immediately following the end of the 2021/2022 school year (June 2022).

When will the project be completed?

Completion of all project work is targeted for October 2023.

What assurance is there that the building will be properly renovated and maintained?

The City's project team (Designer, MSBA Commissioning Agents, Owner's Project Manager, School Building Committee, Construction Manager) will oversee the overall quality control during the construction process. There are inherent checks and balances based on each party's role and responsibility during this process.

After construction is complete and the building is renovated, the City's Building Department will oversee the maintenance and grounds of the building. The City will be following a comprehensive, scheduled preventative maintenance plan for the building as well as a future capital plan.

share the facts



gain support

Significant Contributions

- ✓ Massachusetts School Experts
- ✓ We Know Newton
- ✓ OPM Team Management Approach
- ✓ Recent/Relevant Experience
 - Welch – Phasing construction around school operations
 - Manchester – Site selection
 - Lexington – Schedule/building siting
- ✓ Net Positive Energy Experience
- ✓ Success Achieving Project Votes/Approvals
- ✓ You're Our Top Priority



Designer Procurement

- **RFS due to MSBA:** May 25, 2022
- **Ad placed in Central Register:** June 2, 2022
- **Ad appears in Central Register:** June 8, 2022
- **RFS available on Newton website:** June 9, 2022
- **Questions in writing due:** June 24, 2022
- **Answers posted:** July 1, 2022
- **Applications due to District:** July 7, 2022
- **Applications due to the MSBA:** July 14, 2022
- **DSP Applications Review:** August 2, 2022
- **DSP Interviews Review:** August 16, 2022



Questions?

