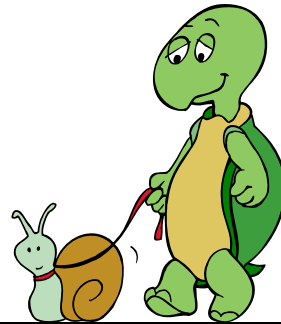




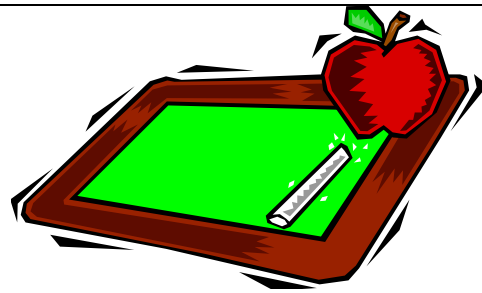
slam



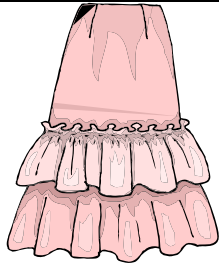
slow



slaw



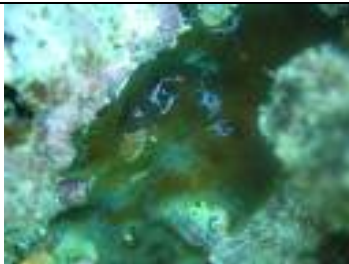
slate



slip



sleep



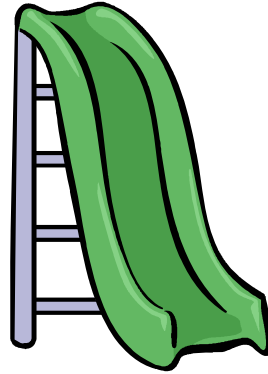
slime



slope



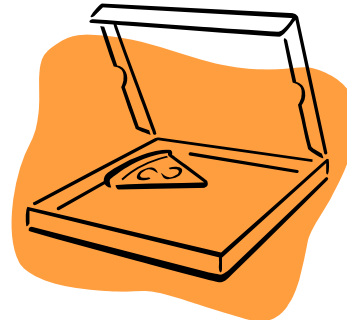
sling



slide



sleeve



slice



sleigh



sleet

slam slow slaw slate slip sleep slime
slope sling slide sleeve slice sleigh sleet

/s/ SSP

Most Complex		Sonority Difference	
↑	Voicless fricative + nasal	sm sn	2
	Voicless fricative + liquid	fl fr θr sl	3
↓	Voiced stop + liquid or voiceless fricative + glide	bl br dr gl gr sw	4
	Voicless stop + liquid	pl pr tr kl kr	5
	Voicless stop + glide	tw kw	6
Least Complex			

Consider targeting 3-element clusters, and 2-element clusters with smaller sonority differences (2 or 3 or 4).

vowels	0	voiced fricatives	4
glides	1	voiceless fricatives	5
liquids	2	voiced stops	6
nasals	3	voiceless stops	7