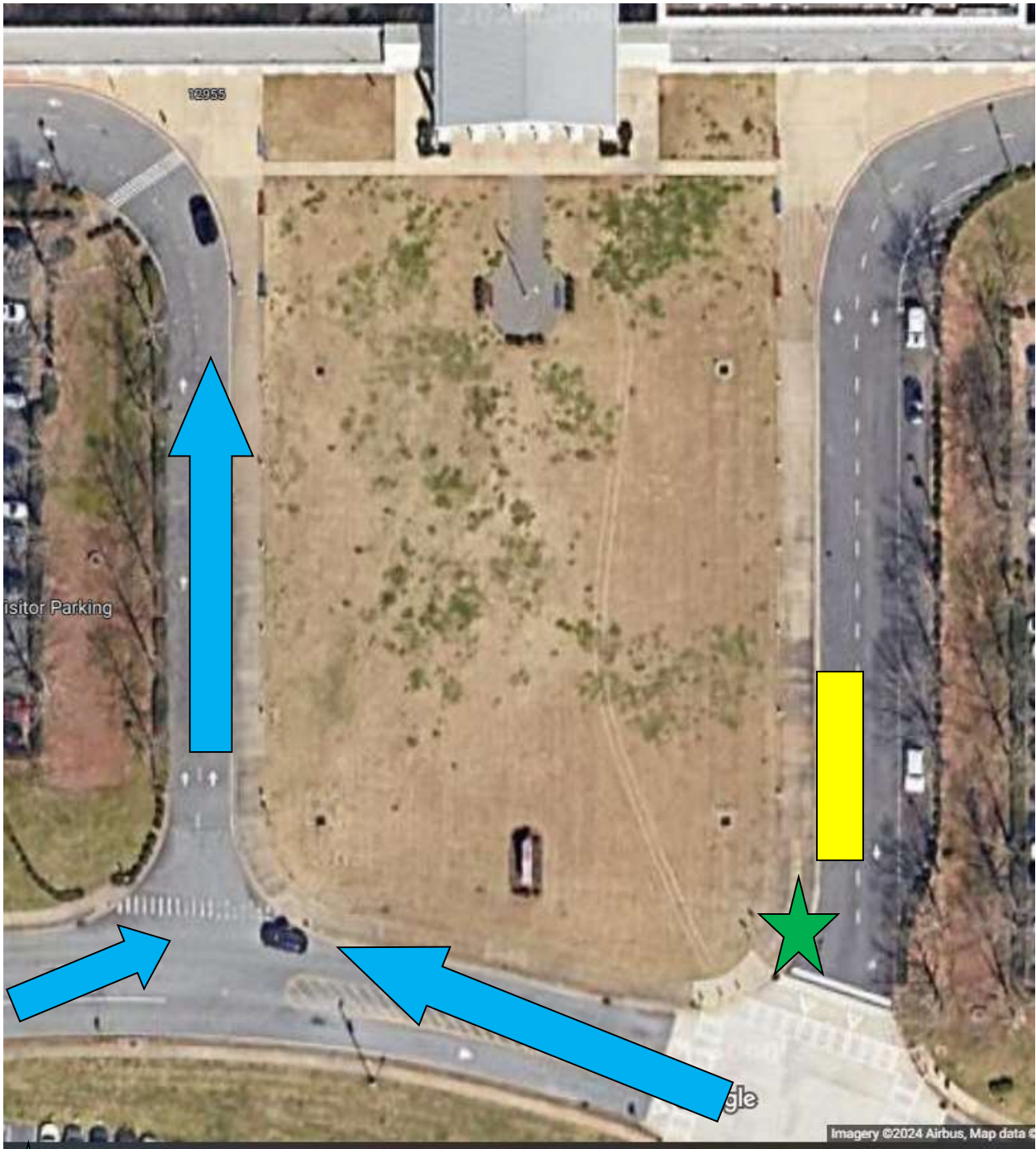


MILTON HIGH SCHOOL



★ = Student drop-off □ = Am Bus 4534 and PM Bus 4505 → = Parent Traffic

Bus 4534 is scheduled to depart Milton HS at 8:16 am.

PM Drop off will be approximately 4:32pm on Bus 4505.

Please drop off and pick up students in the car rider line at Milton HS.