

Pittsford Schools

PITTSFORD, NEW YORK



2024-2025 Schedules and Events

Dear Parents:

Welcome to the 2024-2025 school year! I hope this calendar serves as a useful tool for you and your family to keep track of District and school events, including Board of Education meetings, open houses, concerts and more.

During the course of the school year, our District website at www.pittsfordschools.org, will highlight some of these activities and provide essential updated information as well as links to each school's website. Please use our website and online calendars for the most up to date information and to check for any changes that may occur.

I look forward to the many activities and events planned for this year and hope to see you at some of them.

Thank you for your continued support of our students and schools.

Sincerely,



Michael Pero
Superintendent of Schools

Welcome

Your Pittsford Central School District Board of Education cordially invites you to attend board meetings and to take an active role in the education affairs of our community.

The decisions of your elected Board of Education affect your child, your tax rate, and the well being of your community. The Board urges your participation in such important matters.

There are many ways for you to participate in your schools. Some of these are:

- Keep informed and interested in your schools.
- Express your views by letter or in person to the Board.
- Elect the best-qualified board members.
- Participate in school and District activities and organizations.

Structure

The Board of Education is the official policymaking body of the school district. It is comprised of seven District residents who are elected to three-year terms by District voters at the annual District election. This is an unpaid, elected position.

Participation in Meetings and Communicating with the Board of Education

The Board of Education welcomes your comments, concerns, and questions. The meeting agenda provides for one Public Comment period. To participate in public comment, residents should complete the online submission form, located on the District website, prior to a Board meeting. In addition, residents may also write, call or email Board members and District personnel directly regarding any issue of concern. The Board of Education encourages residents to address their concerns

initially with the employee closest to the issue. This process typically brings the swiftest and most satisfying results.

When a resident communicates with an individual Board member, that information is shared with the rest of the Board and the Superintendent of Schools.

District Annual Vote on Budget and Election of School Board Members May 20, 2025

District residents vote on the school budget, propositions and Board of Education candidates at the District's annual election. This year's voting date is set for Tuesday, May 20. While the vote typically takes place at Barker Road Middle School, due to possible construction and security issues, the location is to be determined. Residents will be notified once a location has been determined.

Qualifications for a School District Voter

Qualified voters must present valid identification in the form of a driver's license, non-driver identification card, utility bill, or voter registration card and be a citizen of the United States, at least eighteen years of age and a resident of the school district for at least thirty days prior to election.

Nomination Procedure for Candidates for the Board of Education

Candidates for the Board of Education are nominated by petition. This petition may be obtained at the administration building from the School District Clerk. It must comply with the current regulations for the total number of signatures and addresses of District residents. Deadline for submission to the school district clerk for the 2025 application is April 21, 2025 at 5pm, Administration Offices, 75 Barker Road – East Wing.

Pittsford Board of Education Members

Robin Scott, President

18 Bay Colony Drive
Pittsford, NY 14534
385-4343
robin_scott@pittsford.monroe.edu

Jeffrey Casey, President-Elect

30 Wenham Lane
Pittsford, NY 14534
317-3188
jeffrey_casey@pittsford.monroe.edu

Sarah Pelusio, Vice President

5 Trailwood Circle
Rochester, NY 14618
727-3648
sarah_pelusio@pittsford.monroe.edu

Dave Berk

25 Parker Drive
Pittsford, NY 14534
490-4422
dave_berk@pittsford.monroe.edu

Kim Huels

25 Northfield Gate
Pittsford, NY 14534
203-7328
kim_huels@pittsford.monroe.edu

Emily Kay

6 Glenmore Circle
Pittsford, NY 14534
313-6323
emily_kay@pittsford.monroe.edu

René Sanchez-Kazacos

7 Tall Acres Drive
Pittsford, NY 14534
732-4382
rene_kazacos@pittsford.monroe.edu

School District Clerk:

Deborah Carpenter

Administrative Offices
75 Barker Rd. – East Wing
Pittsford, NY 14534
267-1005
deborah_carpenter@pittsford.monroe.edu

Pittsford Central Parent Teacher Student Association (PTSA) 2024-2025

Dear Parents, Guardians, Teachers, and Students,

The Pittsford Central PTSA would like to welcome you to the 2024-2025 school year! It is an honor and a privilege to serve as leaders of our Pittsford Central PTSA. We are committed to the PTSA Mission and Vision: *Every Child, Once Voice*. We will strive to be a powerful voice for all children, a relevant resource for families and communities, and a strong advocate for the education and well-being of every child.

Pittsford Central PTSA is pleased to continue to offer a variety of fun and engaging activities across all our schools like, visiting authors, elementary after school enrichment programs, cultural arts programing, field trips, fun nights, spirit wear, book fairs, enrichment grants, honor graduate awards and senior events. We also sponsor and provide a variety of educational programs for parents and families as well as social events, such as school-wide picnics, in order to foster connections and build our school-community.

As a volunteer organization, we appreciate your time and interest in making sure each one of our programs and events are a success. There are many opportunities to help and to meet others; from attending monthly meetings, to planning or volunteering at an event, to volunteering for a leadership role. We welcome all families to participate in a way that best meets their interests and availability.

For more information on membership and how to become involved, visit our website:
www.pittsfordptsanet.net.

Thank you for your continued support of Pittsford PTSA. We look forward to a successful school year!

Kristen Hans and Megan Williams
PTSA President and President-elect

Pittsford Central PTSA Executive Committee

President	Kristen Hans	districtptsanet@pittsfordptsanet.net
President-Elect	Megan Williams	districtptsanet@pittsfordptsanet.net
Past President	Colleen Emmons	colleenemmonsptsanet@gmail.com
Treasurer	April Du	treasurer@pittsfordptsanet.net
Secretary	*OPEN	secretary@pittsfordptsanet.net
VP of Communications and Publications	Meredith Graham	VPCommunications@pittsfordptsanet.net
VP of Education Council	*OPEN	vpedcouncil@pittsfordptsanet.net
VP of Program Support	Nancy Lewis	VPProgramSupport@pittsfordptsanet.net
VP of Resource and Development	Xueya Cai	VPResourceDev@pittsfordptsanet.net

Building Contact Information

Allen Creek Elementary School
Barker Road Middle School
Calkins Road Middle School
Jefferson Road Elementary School
Mendon Center Elementary School
Mendon High School
Park Road Elementary School
Sutherland High School
Thornell Road Elementary School

ace@pittsfordptsanet.net
brms@pittsfordptsanet.net
crms@pittsfordptsanet.net
jre@pittsfordptsanet.net
mce@pittsfordptsanet.net
mhs@pittsfordptsanet.net
pre@pittsfordptsanet.net
shs@pittsfordptsanet.net
tre@pittsfordptsanet.net

Communications and Publications

Vice President for Communications and Publications
Website Administrator & Technical Support
E-News Administrator

VPCommunications@pittsfordptsanet.net
website@pittsfordptsanet.net
enews@pittsfordptsanet.net

Education Council

Vice President for Education Council
QUEST
Diversity & Inclusion (DEI)
Urban Suburban
Pittsford Partnership Liaison

vpedcouncil@pittsfordptsanet.net
QUEST@pittsfordptsanet.net
dandi@pittsfordptsanet.net
urbansuburban@pittsfordptsanet.net
program@pittsfordptsanet.net

Program Support

Vice President of Program Support
Honorary Lifetime Membership Awards
Back to the Future Day
Cultural Arts and Visiting Author
Staff Appreciation
After School Enrichment Program
Student Directories

VPProgramSupport@pittsfordptsanet.net
HLMA@pittsfordptsanet.net
BacktotheFutureDay@pittsfordptsanet.net
CulturalArts@pittsfordptsanet.net
StaffAppreciation@pittsfordptsanet.net
ASEP@pittsfordptsanet.net
Directories@pittsfordptsanet.net

Resource and Development

Vice President of Resource and Development
Membership
Super Sale
School Pictures
Enrichment Grants

VPResourceDev@pittsfordptsanet.net
membership@pittsfordptsanet.net
supersale@pittsfordptsanet.net
pictures@pittsfordptsanet.net
picsagranets@pittsfordptsanet.net

PCSD Liaisons

PDTA Representative Stephanie Warchol stephanie_warchol@pittsford.monroe.edu

Check <https://www.pittsfordptsanet.net> for updated PTSA leadership positions

*Open positions were not filled at time of calendar printing.



PEF Foundation Board

PRESIDENT: Andrew Gleasman, MHS '00

TREASURER: Andrew Kelly, MHS '08

Ray Brown MHS '82

Patricia Chodak

Jeff Cimmerer, Ex-Officio

Kim McCluski

Drew Mokris

Patricia "PK" Morley

Ryan Mott, MHS '00

Michael Pero, Ex-Officio

Sean Phelan

Barbara Shapiro

James A. Spitz, Jr., PHS '68

Amy J. Thomas

Richard Wien

FAQ

What is the purpose of the Pittsford Education Foundation?

The Foundation's purpose is to establish sustainable funding beyond what the government can provide in support of the Pittsford Central School District's (PCSD) children, families, and educators in their pursuit of educational distinction and development.

Who is involved in directing the Foundation?

It is managed and directed by a private volunteer board of community members representing many aspects of the area's business, cultural and educational leadership.

Is PCSD administration involved?

The PCSD Superintendent and Chief Information Officer serve as ex-officio members of the Foundation board.

What type of initiatives does the Foundation fund?

The Foundation invests in initiatives focused on ensuring equitable student experiences, staff support efforts, and capital/facility-based projects. However, the Foundation is not limited to the above areas and looks to address the immediate priorities of the District.

Who decides the projects and programs the Foundation will fund?

The Foundation partners with District leadership to identify top educational priorities and subsequently invests in initiatives focused on ensuring equitable student experiences, staff support efforts, and capital/facility-based projects.

Why do we need the Pittsford Education Foundation?

Foundations in support of public education are a growing occurrence throughout the country. The cost of education is increasing at a rate that exceeds the district's ability to match through its budget, which is constrained by State legislation and aid. At the same time, the needs and expectations of today's students have changed considerably—it is essential they have personalization, more relevant and authentic experiences, and acquire the skills to succeed in their academic and professional journey.

The right resources and technology are required to address these changes and ensure the success of our students, staff, and faculty. Lack of funding leaves a resource gap that neglects the future of Pittsford students – a gap that only community and philanthropic support can close.

Mission

Founded in 1992, Pittsford Education Foundation (PEF) is a nonprofit foundation dedicated to establishing sustainable funding beyond what the government can provide in support of the Pittsford Central School District's (PCSD) children, families, and educators in their pursuit of educational distinction and development.

Vision

Pittsford Education Foundation will increase financial resources supporting the District in addressing the most critical strategic educational initiatives that face the children in our community. The Foundation board is proud to engage our community as ambassadors – working to improve our schools and prepare our students for the world.

PEF commitment is inclusive – ensuring all students in the PCSD have equitable access to exceptional educational opportunities.

pittsfordedufoundation.org



Supporting Youth. Strengthening Families.

For over 50 years, Pittsford Youth Services has been the respected leader in providing social work services and counseling to the **youth and families** of Pittsford. PYS was founded in 1969 by a group of local churches and was legally incorporated in 1987 as a nonprofit human services agency. We are committed to enhancing the quality of life of our youth, whether they are burdened by academic, social or emotional issues, thereby helping them to become successful, contributing citizens of our community. The support PYS offers to youth and their families directly impacts a child's overall health and likelihood of success in school and in life.

Our Mission

Pittsford Youth Services, Inc. (PYS) is dedicated to providing youth and their families with confidential, professional and affordable social work services in the schools and Pittsford community. PYS strives to enhance social and emotional well-being through counseling, advocacy, educational programs and informational services.

Our Vision

Pittsford Youth Services will seek to build a community where every child feels valued and empowered. To that end, PYS will be the respected leader and provider of professional social work services for Pittsford youth and their families.

PYS is proud to be the provider of professional social work services for the Pittsford schools, St. Louis School and at our offices in the Village of Pittsford. All PYS social work staff are New York State Licensed Master's Level Social Workers (LMSW) or Licensed Clinical Social Workers (LCSW).

How to Access Services

Eligibility: Any youth, ages 5-21 and their families, who live, work, attend school or worship in the town of Pittsford.

Cost: Services in the schools for youth are free. Additional counseling services are available at our offices on 4 South Main Street in the Phoenix Building in the Village at a cost of \$60/hr. A sliding scale is utilized in working with families who may have limited resources, and services are never denied based upon inability to pay.

Contact: Anyone can make a referral to PYS or request services. Parents may contact their child's teacher, school counselor or the PYS office directly to arrange services. Appointments at the PYS office are available during the day, some evenings and as arranged directly with the social worker.

PYS Services

- Individual and family counseling
- Home visits
- Referrals to outside agencies
- Social-emotional youth groups
- Grief and loss counseling
- Support of Special Ed. Services
- Parent education programs
- Skill-based groups
- Drug and alcohol education/information programming

For more information or to learn how you can help, call (585) 264-0604 or visit our website: www.pittsfordyouthservices.org.

Special Education Services

The District Special Education Department is committed to a partnership with parents, families and school district personnel in the education of children. Questions about services can be directed to the Director of Special Education, at 267-1014.

The mission of the Special Education Department is to support diverse learners and to foster an inclusive culture within our schools and community. Through a network of supports, students with disabilities are empowered to identify, pursue, and fulfill their personal aspirations as they participate in our global society.

What is special education?

Special Education services are specially designed individualized or group instruction, special services, or programs to meet the unique needs of students with disabilities. Special Education programs and services are provided for eligible students, ages 3-21, without cost to the parent.

What is the process to access services in Pittsford?

If a parent, teacher, or other person knowledgeable about a student believes that the student has a disability, they can contact the Special Education office at 267-1014 or the Student Services Teacher at each school building. Contact information can be found on the Special Education department page of the District website at www.pittsfordschools.org.

What is the Committee on Special Education?

The Committee on Special Education (CSE), with parental consent, arranges for the evaluation of students thought to have a disability. If the student is eligible for special education services or programs, an IEP (Individualized Education Program) is developed, services are provided, and reviewed at least annually.

What other services are available through the Special Education Office?

TIES – Together Including Every Student provides trained high school and middle school volunteers to support Pittsford students with disabilities in adult-sponsored after school activities. For information, call Dale Cameron-Kody, Pittsford TIES Coordinator at 267-3343.

Pittsford SEPTA Special Education PTA



Pittsford SEPTA (Special Education PTA) was founded in 2021 to create a strong team who collaborate creatively to provide information, resources, and support to caregivers, families, and staff of students who require specially designed instruction. We are an independent unit under the NYS PTA serving the Pittsford Central School District. We seek to inform, support, and advocate for the unique and diverse learning needs of our students. This includes students who have a 504 plan, IEP, or who may be struggling academically due to any number of factors ranging from disability to giftedness, or a combination thereof. Our hope is that children receiving special education services will be better understood, integrated, and embraced by their schools and communities, in order to achieve *meaningful* inclusion of *all* students and adults with diverse abilities in *all* spaces.

Guided by our three tenets of *Inclusion, Advocacy, and Collaboration*, we host parent information workshops each month to address the most relevant topics for our stakeholders! Some of SEPTA's most impactful contributions have been in the form of our monthly meetings, newsletters, an ongoing Parent/Caregiver Support Group facilitated by Pittsford Youth Services, and our collaborative partnership with school district leadership.

Goals and Objectives:

- To be a positive and solution-oriented group, serving as a resource to families of children with diverse learning needs from preschool through their transition from high school.
- To advocate as needed in order to ensure that the educational, social, and emotional needs of our students and their families are met.
- To provide education, resources and support to teachers, students, caregivers, and the broader community regarding Special Education issues and services.
- To collaborate with the Pittsford Central School District on relevant issues pertaining to Special Education Services, and to amplify the voices of students with IEPs or 504 plans, as well as their parents and caregivers.

As individuals with diverse learning needs and the parents and caregivers who love and support them, our journeys are often very different. We aim to make sure that all students and their families feel a sense of belonging here in PCSD.

Pittsford SEPTA President
Megan DeFries
pittsfordsepta@gmail.com



Pittsford Schools

PITTSFORD, NEW YORK

August 2024

SUNDAY	MONDAY	TUESDAY	WEDNESDAY	THURSDAY	FRIDAY	SATURDAY
<div><div>Keys to ABBREVIATIONS</div><div>AC Allen Creek Elementary</div><div>BRMS Barker Road Middle School</div><div>CRMS Calkins Road Middle School</div><div>JR Jefferson Road Elementary</div><div>MC Mendon Center Elementary</div><div>PR Park Road Elementary</div><div>TR Thornell Road Elementary</div><div>MHS Pittsford Mendon High</div><div>SHS Pittsford Sutherland High</div></div>				1	2	3
4	5	6	7	8	9	10
				<div>Town of Pittsford Family Outdoor Movie, at dark, SHS Athletic Fields</div>	<div>Town of Pittsford Summer Concert Series, Carpenter Park at the Port of Pittsford, 6:30pm</div>	

11	12	13	14	15	16	17
		<ul style="list-style-type: none"> Board of Education Meeting, BRMS McCluski Room, 5pm 	<ul style="list-style-type: none"> MHS LINK Leader Training, 1-4:30pm Town of Pittsford Concert for Kids, Spiegel Pittsford Community Center, 6:30pm 	<ul style="list-style-type: none"> MHS LINK Leader Training, 1-4:30pm 	<ul style="list-style-type: none"> Town of Pittsford Summer Concert Series, Carpenter Park at the Port of Pittsford, 6:30pm 	
18	19	20	21	22	23	24
	<ul style="list-style-type: none"> CRMS WEB Leader Training, 12:30-4pm Varsity and JV Football Starts	<ul style="list-style-type: none"> CRMS WEB Leader Training, 12:30-4pm SHS Link Leader Training, 1-4:30pm New Staff Orientation 	<ul style="list-style-type: none"> BRMS WEB Leader Training, 8am-12:30pm CRMS Gr 6 Student Orientation, 8am-12pm CRMS Gr 6 Parent Orientation, 11am-12pm MC Gr 1-5 New Family Orientation, 9:30-10:30am SHS Link Leader Training, 1-4:30pm TR Gr 1-5 New Family Orientation, 12-1pm TR PTSA Meeting, 1-2pm 	<ul style="list-style-type: none"> BRMS WEB Leader Training, 8am-12:30pm Urban Suburban Orientation, MCE Auditorium, 9-11am CRMS Gr 7 & 8 New Student Orientation, 9:30-10:30am Town of Pittsford Family Outdoor Movie, at dark, SHS Athletic Fields 	<ul style="list-style-type: none"> Town of Pittsford Summer Concert Series, Carpenter Park at the Port of Pittsford, 6:30pm 	<ul style="list-style-type: none"> SAT, MHS, 8am
25	26	27	28	29	30	31
	Fall Sports Start - Modified, JV, Varsity	<ul style="list-style-type: none"> BRMS Gr 6 Student Orientation, 8am-12pm BRMS Gr 6 Parent/Guardian Orientation, 11am-12pm MHS Gr 9 Parent/Guardian Orientation, 8-9am MHS Gr 9 Student Orientation, 8am-12pm MHS Gr 10-12 New Student Orientation, 12:30-2pm MHS Lunch Dismissal Required Meeting, Auditorium, 6-7pm SHS Gr 9 Parent/Guardian Orientation, 8-9am SHS Gr 9 Student Orientation, Gym 8am-12pm SHS Gr 10-12 New Student Orientation, LGI, 12:30-3pm SHS Lunch Dismissal Required Meeting, Auditorium, 6-6:30pm 	<ul style="list-style-type: none"> BRMS Gr 7 & 8 New Student Orientation, 1-2pm PR Gr K Parent/Guardian, Student Orientation, 9-10am PR Gr 1-5 New Family Orientation, 11am-12pm TR Gr K Parent/Guardian, Student Orientation, 10-11am 	<ul style="list-style-type: none"> AC Gr K Parent/Guardian, Student Orientation, 10-11am AC Newcomer Meet & Greet, 1-2:30pm JR Gr K Parent/Guardian, Student Orientation, 8:30-10am JR Gr 1-5 New Family Orientation, 10:30-11:30am JR School Supply Pick-up, 1-3pm MC Gr K Parent/Guardian, Student Orientation, 11am-12pm 		

Please visit www.pittsfordschools.org for the most up-to-date calendar information.



Pittsford Schools

PITTSFORD, NEW YORK

September 2024

SUNDAY	MONDAY	TUESDAY	WEDNESDAY	THURSDAY	FRIDAY	SATURDAY
1	2	3	4	5	6	7
	Schools Closed - Labor Day	<ul style="list-style-type: none"> MC Gr 4 Parent/Guardian, Student Orientation, 12:30-1:30pm MC Gr 5 Parent/Guardian, Student Orientation, 1:30-2:30pm All-Staff Opening Day Staff Work Day	<ul style="list-style-type: none"> AC Parent/Guardian, Student Orientation Gr 1, 9-10am Gr 4, 10-11am Gr 2, 11am-12pm Gr 5, 1:30-2:30 Gr 3, 1-2pm JR Parent/Guardian, Student Orientation Gr 1, 10-11am Gr 4, 2-3pm Gr 2, 1-2pm Gr 5, 12-1pm Gr 3, 11am-12pm MC Parent/Guardian, Student Orientation Gr 1, 8:30-9:30am Gr 2, 9:30-10:30am Gr 3, 10:30-11:30am PR Parent/Guardian, Student Orientation Gr 1, 9-10am Gr 4, 2-3pm Gr 2, 10-11am Gr 5, 1-2pm Gr 3, 12-1pm SHS Senior Parking Registration, Commons, 1-3pm TR Parent/Guardian, Student Orientation Gr 1, 9-10am Gr 4, 12-1pm Gr 2, 10am-11am Gr 5, 2-3pm Gr 3, 11am-12pm Staff Work Day	<ul style="list-style-type: none"> MHS Lunch Dismissal Required Meeting, Auditorium, 7-7:30pm SHS Lunch Dismissal Required Meeting, Auditorium, 7-7:30pm School Opens - First Day for Students		<ul style="list-style-type: none"> ACT, SHS, 8am
8	9	10	11	12	13	14
<ul style="list-style-type: none"> BRMS Book Fair MHS School Picture Day SHS Gr 11 & 12 School Picture Day 		<ul style="list-style-type: none"> BRMS Book Fair MHS School Picture Day SHS Gr 9 & 10 School Picture Day Board of Education Meeting, BRMS McCluski Room, 7-9pm 	<ul style="list-style-type: none"> AC PTSA Meeting, 9:30-10:30am AC Welcome Back Picnic, 5:30-7pm BRMS Open House, 6-8pm BRMS Book Fair 	<ul style="list-style-type: none"> AC Gr K Parent/Guardian Curriculum Information, 4:30-5:30pm CRMS Open House, 6-8pm MHS Open House, 6:30pm BRMS Book Fair 		<ul style="list-style-type: none"> Town of Pittsford Food Truck & Music Fest, South Main Street, Pittsford, 12-9pm

15	16	17	18	19	20	21
	<ul style="list-style-type: none"> SHS Senior & Parent/Guardian College Application Night, Auditorium, 7-8:30pm ② 	<ul style="list-style-type: none"> TR PTSA Meeting, 8-9am ③ 	<ul style="list-style-type: none"> SHS PTSA Meeting, SHS Faculty Lounge, 8-9:30am MC Welcome Back Picnic, 5:30-7pm JR PTSA Meeting, 7-8pm PR PTSA Meeting, 7-8pm ④ 	<ul style="list-style-type: none"> MHS PTSA Meeting, 8:30-9:30am SHS Open House, 6:30-8:30pm ⑤ 	<ul style="list-style-type: none"> TR Welcome Back Picnic, 5-7pm ⑥ 	
22	23	24	25	26	27	28
		<div>← Homecoming Week →</div>				
	<ul style="list-style-type: none"> MC PTSA Meeting, Cafeteria, 9:15-10:15am CRMS PTSA Meeting, Auditorium, 7-8:30pm MHS Senior & Parent/Guardian College Information Night, Auditorium, 7pm ① 	<ul style="list-style-type: none"> QUEST PTSA Meeting, 7-8pm PR Book Fair ③ 	<ul style="list-style-type: none"> BRMS PTSA Meeting, 9-10am JR Welcome Back Picnic, 5-7pm PR Welcome Back Picnic/Book Fair, 5:30-7pm AC School Picture Day PR Book Fair ④ 	<ul style="list-style-type: none"> BRMS School Picture Day CRMS School Picture Day ⑤ 	<ul style="list-style-type: none"> Homecoming Parade, Village of Pittsford, 9am Homecoming Football Game, 5pm, SHS 	
29	30				<div> <p>The elementary 6-day rotation cycle is indicated on each school day.</p> <p>Ex: ①</p> </div>	
	<ul style="list-style-type: none"> DEI (Diversity, Equity, Inclusion) PTSA meeting, 7-8pm BRMS School Picture Absentee Day CRMS School Picture Absentee Day ⑥ 					<p>Keys to ABBREVIATIONS</p> <p>AC Allen Creek Elementary</p> <p>BRMS Barker Road Middle School</p> <p>CRMS Calkins Road Middle School</p> <p>JR Jefferson Road Elementary</p> <p>MC Mendon Center Elementary</p> <p>PR Park Road Elementary</p> <p>TR Thornell Road Elementary</p> <p>MHS Pittsford Mendon High</p> <p>SHS Pittsford Sutherland High</p>



Pittsford Schools

PITTSFORD, NEW YORK

October 2024

SUNDAY	MONDAY	TUESDAY	WEDNESDAY	THURSDAY	FRIDAY	SATURDAY
Keys to ABBREVIATIONS AC Allen Creek Elementary BRMS Barker Road Middle School CRMS Calkins Road Middle School JR Jefferson Road Elementary MC Mendon Center Elementary PR Park Road Elementary TR Thornell Road Elementary MHS Pittsford Mendon High SHS Pittsford Sutherland High	Exhibition of Mendon High School Artwork at BRMS McCluski Room and at the Pittsford Community Library	1	2	3	4	5
		<ul style="list-style-type: none">• SEPTA Meeting, 7pm ①	<ul style="list-style-type: none">• District PTSA Meeting, BRMS, 9-11am• Teacher Center Policy Board Meeting, BRMS 404, 3:30-4:30pm ②	<ul style="list-style-type: none">• Board of Education MHS Visit/Tour, 7:15am ③	<ul style="list-style-type: none">• CRMS Gr 7 Fun Night, 6-8pm ④	<ul style="list-style-type: none">• SAT MHS, 8am
6	7	8	9	10	11	12
		<ul style="list-style-type: none">• AC PTSA Meeting, 6:30-7:30pm• JR School Picture Day ⑤	<ul style="list-style-type: none">• MC School Picture Day• PR School Picture Day ⑥	<ul style="list-style-type: none">• MHS Lunch Dismissal Required Meeting, 7:15am• MC School Picture Day• TR School Picture Day ②	Schools Closed - Superintendent's Conference Day	<ul style="list-style-type: none">• PSAT, SHS, 8am

13	14 Schools Closed - Columbus Day (Federal Holiday) Indigenous Peoples Day	15 <ul style="list-style-type: none"> MC PTSA Meeting, Cafeteria, 9:15-10:15am Board of Education Meeting, School Report by MHS, BRMS McCluski Room 7-9pm ③ 	16 <ul style="list-style-type: none"> JR PTSA Meeting, 9-10am PTSA Super Sale - Donation Intake, Golisano Training Center, 4245 East Ave., 9am-7pm ④ 	17 <ul style="list-style-type: none"> PTSA Super Sale - Donation Intake, Golisano Training Center, 4245 East Ave., 8am-7pm ⑤ 	18 <ul style="list-style-type: none"> PTSA Super Sale - Pre-sale for Staff & Workers, Golisano Training Center, 4245 East Ave., 3-8pm CRMS Gr 6 Fun Night, 6-8pm ⑥ 	19 PTSA Super Sale <ul style="list-style-type: none"> PTSA Super Sale - Public sale, Golisano Training Center, 4245 East Ave., 9am-8pm
20 PTSA Super Sale <ul style="list-style-type: none"> PTSA Super Sale - 50% & Bag-it sale, Golisano Training Center, 4245 East Ave., 9am-8pm Town of Pittsford Family Halloween Fest, Spiegel Pittsford Community Center, 2-5pm 	21 <ul style="list-style-type: none"> JR Book Fair MC Book Fair, Auditorium MHS School Picture Make-up Day SHS School Picture Make-up Day TR Book Fair ① 	22 <ul style="list-style-type: none"> MC Book Fair Family Night, Auditorium, 5-7pm JR Book Fair MC Book Fair, Auditorium SHS School Picture Make-up Day TR Book Fair ② 	23 <ul style="list-style-type: none"> PR PTSA Meeting, 10-11am JR Book Fair MC Book Fair, Auditorium TR Book Fair ③ 	24 <ul style="list-style-type: none"> MHS PTSA Meeting, 8:30-9:30am PDTA Benefits Fair, CRMS Commons, 2:30-5pm JR Book Fair MC Book Fair, Auditorium TR Book Fair ④ 	25 <ul style="list-style-type: none"> BRMS Gr 7 Fun Night, 6-8pm TR PTSA Light the Loop, 6-8pm CRMS Gr 6 Musical, Auditorium, 7pm JR Book Fair MC Book Fair, Auditorium TR Book Fair ⑤ 	26 <ul style="list-style-type: none"> ACT, SHS, 8am PSAT, MHS, 8am CRMS Gr 6 Musical, Auditorium, 2pm JR PTSA Light the Loop, 6-8pm PR PTSA Light the Loop Festival, 6pm
27	28 <ul style="list-style-type: none"> DEI (Diversity, Equity, Inclusion) PTSA meeting, 7-8pm BRMS School Picture Make-up Day CRMS School Picture Make-up Day ⑥ 	29 <ul style="list-style-type: none"> BRMS PTSA Meeting, 9-10am TR PTSA Meeting, 3-4pm Pittsford Power Hour, CRMS Commons, 6:30-7:30pm ① 	30 <ul style="list-style-type: none"> SHS PTSA Meeting, SHS Faculty Lounge, 8-9:30am ② 	31 ③		

Please visit www.pittsfordschools.org for the most up-to-date calendar information.



Pittsford Schools

PITTSFORD, NEW YORK

November 2024

SUNDAY	MONDAY	TUESDAY	WEDNESDAY	THURSDAY	FRIDAY	SATURDAY
Keys to ABBREVIATIONS AC Allen Creek Elementary BRMS Barker Road Middle School CRMS Calkins Road Middle School JR Jefferson Road Elementary MC Mendon Center Elementary PR Park Road Elementary TR Thornell Road Elementary MHS Pittsford Mendon High SHS Pittsford Sutherland High	Exhibition of Thornell Road Elementary School Artwork at BRMS McCluski Room and at the Pittsford Community Library				1 • NYSSMA Jr. High Area All-State, York ④	2 • NYSSMA Jr. High Area All-State, York • SAT, MHS, 8am
3	4	5	6	7	8	9
	• AC PTSA Meeting, 6:30-7:30pm • SEPTA Meeting, 7pm • AC School Picture Make-up Day ⑤	• CRMS PTSA Meeting, Auditorium, 9-10:30am • MHS Fall Concert Part 1, Auditorium, 7pm ⑥	• Teacher Center Policy Board Meeting, BRMS 404, 3:30-4:30pm • MHS Fall Concert Part 2, Auditorium, 7pm First Marking Period Ends (Gr 6-12) ①	• Board of Education TR Tour 7:30am; Visit 7:45am • SHS Drama, Auditorium, 7pm ②	• SHS Drama, Auditorium, 7pm • JR School Picture Make-up Day • PR School Picture Make-up Day ③	• SHS Drama, Auditorium, 7pm

10	11	12	13	14	15	16
	Schools Closed - Veterans Day <ul style="list-style-type: none"> Town of Pittsford/American Legion Veterans Day Ceremony, Veterans Monument, Carpenter Park at the Port of Pittsford 11am 	<ul style="list-style-type: none"> Board of Education Meeting, School Report by TR, BRMS McCluski Room, 7-9pm ④ 	<ul style="list-style-type: none"> SHS Fall Concert Part 1, Auditorium, 7pm MC School Picture Make-up Day ⑤ 	<ul style="list-style-type: none"> PR PTSA Meeting, 10-11am QUEST PTSA Meeting, 7-8pm TR School Picture Make-up Day ⑥ 	<ul style="list-style-type: none"> NYSSMA Sr. High Area All-State, Newark ① 	<ul style="list-style-type: none"> NYSSMA Sr. High Area All-State, Newark
17	18	19	20	21	22	23
	<ul style="list-style-type: none"> SHS Lunch Dismissal Required Meeting, Auditorium, 7-7:30pm Winter Varsity and JV Sports Start ②	<ul style="list-style-type: none"> AC Book Fair, 9am-3pm MC PTSA Meeting, Cafeteria, 9:15-10:15am SHS Fall Concert Part 2, Auditorium, 7pm ③ 	<ul style="list-style-type: none"> AC Book Fair, 9am-3pm District PTSA meeting, SHS, 7-9pm ④ 	<ul style="list-style-type: none"> AC Book Fair, 9am-3pm AC Book Fair, 6pm-7:30 MHS PTSA Meeting, 6:30-7:30pm MHS Junior & Parent/Guardian College Information Night, 7-8pm SHS Junior & Parent/Guardian College Information Night, 7-8pm JR Ingathering ⑤ 	<ul style="list-style-type: none"> AC Book Fair, 9am-12pm JR Ingathering ⑥ 	
24	25	26	27	28	29	30
	<ul style="list-style-type: none"> JR Ingathering ① 	<ul style="list-style-type: none"> JR Ingathering K-5 Report Cards Posted ②	<div> <div>←</div> <div>Thanksgiving Recess</div> <div>→</div> </div>			
			Schools Closed	Schools Closed	Schools Closed	



Pittsford Schools

PITTSFORD, NEW YORK

December 2024

SUNDAY	MONDAY	TUESDAY	WEDNESDAY	THURSDAY	FRIDAY	SATURDAY
1	2	3	4	5	6	7
	<ul style="list-style-type: none">• DEI (Diversity, Equity, Inclusion) PTSA meeting, 7-8pm ②	<ul style="list-style-type: none">• Gr K-5 Early Dismissal for Parent/Guardian Conferences, 11:44am• Village of Pittsford Candlelight Night ④	<ul style="list-style-type: none">• Teacher Center Policy Board Meeting, BRMS 404, 3:30-4:30pm ⑤	<ul style="list-style-type: none">• Board of Education BRMS Visit/Tour 7:15am• Gr K-5 Early Dismissal for Parent/Guardian Conferences, 11:44am ⑥	<ul style="list-style-type: none">• BRMS Gr 8 Fun Night, 6-8pm ①	
8	9	10	11	12	13	14
	<ul style="list-style-type: none">• BRMS Gr 7 & 8 Chorus Concert, Auditorium, 7pm• CRMS All Bands Concert, Auditorium, 7pm ②	<ul style="list-style-type: none">• Gr K-5 Early Dismissal for Parent/Guardian Conferences, 11:44am• Board of Education Meeting, School Report by BRMS, BRMS McCluski Room, 7-9pm ③	<ul style="list-style-type: none">• BRMS Gr 7 & 8 Orchestra Concert, Auditorium, 7pm• CRMS Gr 7 & 8 Chorus and Orchestra Concert, Auditorium, 7pm ④	<ul style="list-style-type: none">• BRMS PTSA Meeting, 9-10am• MHS Drama, Auditorium, 7pm ⑤	<ul style="list-style-type: none">• MHS Drama, Auditorium, 7pm• SHS Collaborative Jazz Concert, Auditorium, 7pm ⑥	<ul style="list-style-type: none">• MHS Drama, Auditorium, 7pm

15	16	17	18	19	20	21
	<ul style="list-style-type: none"> • BRMS Gr 7 & 8 Band Concert, MHS Auditorium, 7pm ① 	<ul style="list-style-type: none"> • CRMS Gr 6 Chorus and Orchestra Concert, Auditorium, 7pm ② 	<ul style="list-style-type: none"> • MHS Jazz Concert, Auditorium, 7pm • SHS Small Vocal Ensemble Concert, Auditorium, 7pm ③ 	<ul style="list-style-type: none"> • BRMS Gr 6 All Ensembles and Select Chorus, MHS Auditorium, 7pm ④ 	<ul style="list-style-type: none"> • Rainbow Classic: Girls 6pm, Boys 8pm, UR Palestra ⑤ 	
22	23	24	25	26	27	28
	 Schools Closed - Winter Recess					
29	30	31			Exhibition of Barker Road Middle School Artwork at BRMS McCluski Room and at the Pittsford Community Library	
	 Schools Closed - Winter Recess				Keys to ABBREVIATIONS AC Allen Creek Elementary BRMS Barker Road Middle School CRMS Calkins Road Middle School JR Jefferson Road Elementary MC Mendon Center Elementary PR Park Road Elementary TR Thornell Road Elementary MHS Pittsford Mendon High SHS Pittsford Sutherland High	

Please visit www.pittsfordschools.org for the most up-to-date calendar information.



Pittsford Schools

PITTSFORD, NEW YORK

January 2025

SUNDAY	MONDAY	TUESDAY	WEDNESDAY	THURSDAY	FRIDAY	SATURDAY
Keys to ABBREVIATIONS AC Allen Creek Elementary BRMS Barker Road Middle School CRMS Calkins Road Middle School JR Jefferson Road Elementary MC Mendon Center Elementary PR Park Road Elementary TR Thornell Road Elementary MHS Pittsford Mendon High SHS Pittsford Sutherland High	Exhibition of Jefferson Road Elementary School Artwork at BRMS McCluski Room and at the Pittsford Community Library		<div>1</div> <div>← Winter Recess →</div> <div>Schools Closed - Winter Recess</div>	<div>2</div> <div>← Winter Recess →</div> <div>Schools Closed - Winter Recess</div>	<div>3</div> <div>← Winter Recess →</div> <div>Schools Closed - Winter Recess</div>	<div>4</div>
<div>5</div>	<div>6</div> <div> • MC Ski Club, 3:15-9pm • TR Ski Club, 3:15-9pm </div> <div>⑥</div>	<div>7</div> <div> • SEPTA Meeting, 7pm • BRMS Ski Club </div> <div>①</div>	<div>8</div> <div> • SHS Ski Club, 3:15-10pm • Teacher Center Policy Board Meeting, BRMS 404, 3:30-4:30pm • SHS PTSA Meeting, SHS LGI, 7-8:30pm </div> <div>②</div>	<div>9</div> <div> • Board of Education JR Tour 7:30am; Visit 7:45am • MHS PTSA Meeting, 8:30-9:30am • CRMS Ski Club </div> <div>③</div>	<div>10</div> <div> • MHS Prism Concert, Auditorium, 7pm • MCSMA Sr. High Instrumental Solo Festival, Brockport </div> <div>④</div>	<div>11</div> <div> • MCSMA Sr. High Instrumental Solo Festival, Brockport </div>

12	13	14	15	16	17	18
	<ul style="list-style-type: none"> MC Ski Club, 3:15-9pm TR Ski Club, 3:15-9pm BRMS/CRMS Wind Ensemble & Percussion Ensemble, BRMS Auditorium, 7pm ⑤	<ul style="list-style-type: none"> BRMS Ski Club Board of Education Meeting, School Report by JR, BRMS McCluski Room, 7-9pm ⑥	<ul style="list-style-type: none"> SHS Ski Club, 3:15-10pm AC Open Library Night, 6-7pm CRMS Jazz Concert, Auditorium, 7pm PR PTSA Meeting, 7-8pm ①	<ul style="list-style-type: none"> BRMS PTSA Meeting, 9-10am MHS Voice Class Recital, Auditorium, 6pm Pittsford Power Hour, CRMS Commons, 6:30-7:30pm CRMS Ski Club ②	<ul style="list-style-type: none"> MCSMA Jr. High Instrumental Solo Festival, Brighton MS MCSMA Vocal and Vocal Jazz Solo Festival, Brighton HS ③	<ul style="list-style-type: none"> MCSMA Jr. High Instrumental Solo Festival, Brighton MS MCSMA Vocal and Vocal Jazz Solo Festival, Brighton HS
19	20	21	22	23	24	25
	Schools Closed - Martin Luther King, Jr. Day	← Regents Exams (School in session for all grades) → <ul style="list-style-type: none"> TR PTSA Meeting, 12-1pm MC PTSA Meeting, Cafeteria, 9:15-10:15am CRMS Select Chorus and Festival Orchestra Concert, Auditorium, 7pm PR Gr 5 Fine Arts Night/Gr.5 Chorus and Band Concert, Auditorium 7pm BRMS Ski Club ④	<ul style="list-style-type: none"> District PTSA Meeting, MC, 9-10:30am AC Gr 4 Chorus Concert, Auditorium, 6:30pm AC G 5 Chorus Concert, Auditorium, 7:15pm JR Gr 4 Chorus and Orchestra Concert, Auditorium, 7pm SHS Voice Class Recital, Auditorium, 2:30pm SHS Ski Club, 3:15-10pm ⑤	<ul style="list-style-type: none"> JR PTSA Meeting, 7-8pm MC Gr 4 Chorus and Orchestra Concert, Auditorium, 7pm MHS Incoming Gr 9 Parent/Guardian Curriculum Night, Auditorium, 7pm CRMS Ski Club ⑥	Regents Exams (Gr 9-12 report for exams only. School in session for Gr K-8) <ul style="list-style-type: none"> CRMS Gr 6 Fun Night, 6-8pm MCSMA Elementary Instrumental and Jazz Solo Festival, BRMS Gr K-5 Special Area Report Cards Posted Second Marking Period Ends (Gr 6-12) ①	<ul style="list-style-type: none"> MCSMA Elementary Instrumental and Jazz Solo Festival, BRMS
26	27	28	29	30	31	
	<ul style="list-style-type: none"> MC Ski Club, 3:15-9pm SHS Ski Club, 3:15-10pm TR Ski Club, 3:15-9pm SHS Incoming Gr 9 Parent/Guardian Curriculum Night, Auditorium, 6:30pm ②	<ul style="list-style-type: none"> TR Gr 4 Chorus and Orchestra Concert, Auditorium, 7pm BRMS Ski Club ③	Schools Closed - Lunar New Year (NYS Holiday) ④	<ul style="list-style-type: none"> Board of Education PR Tour 7:30am; Visit 7:45am MC Gr 5 Chorus and Band Concert, Auditorium, 7pm PR Gr 4 Chorus and Orchestra Concert, Auditorium 7pm CRMS Ski Club ⑤	<ul style="list-style-type: none"> BRMS Gr 7-8 Musical, MHS Auditorium, 7pm ⑥	

Please visit www.pittsfordschools.org for the most up-to-date calendar information.

SUPER SALE

Please support PTSA's largest fundraiser!!!

DONATE, VOLUNTEER AND
SHOP SHOP SHOP SHOP SHOP

SAVE THE DATES:

OCTOBER 19-20, 2024

For information,
pittsfordptsasupersale@gmail.com
www.pittsfordptsa.net/super-sale



**GOLISANO
TRAINING CENTER
4245 East Avenue**

Donation Intake: October 16-17

Pre-sale for staff
and workers: Oct. 18

Sale: Oct. 19-20

Pittsford Schools

2024-2025 School Year

Dear Parent/Guardian,

The District recognizes the importance of assisting our families in need through various programs, including free and reduced-priced meals. As we enter the 2024-25 school year, I want to provide some updated information.

An application for this assistance is required for each school year. The 2023-24 term for free and reduced meals ended on June 30, 2024. If you have applied previously, you must reapply each year.

Please complete and return the application on the back of this letter by August 30, 2024 in order for meal benefits to become effective for the start of school on Thursday, September 5, 2024.

Completed applications should be sent to Pittsford Food Service Department, 100 Mendon Center Road, Pittsford, NY 14534. You will be notified directly via email if your application is approved or denied.

Along with the completed application, please submit the following:

- Original copy of a direct certification letter or a copy of SNAP letter (not a benefits card).
- OR**
- Income verification (2 consecutive pay stubs) for ALL reported income.

Without these documents, the Food Services Department will not be able to review your application for free and/or reduced meal benefits.

While August 30, 2024 is the deadline for access on the first day of school, the Food Services Department will continue to accept applications throughout the school year as we understand that circumstances change. Any charges incurred prior to approval are the parents/guardians responsibility.

Please feel free to contact me with any questions or concerns at (585) 267-1096 or Elena_Montgomery@pittsford.monroe.edu. We look forward to serving your children healthy and nutritious lunches again this school year.

Sincerely,

Elena Montgomery
Director of Food Services

Date Withdrew _____

F ____ R ____ D ____

2024-2025 Application for Free and Reduced Price School Meals/Milk

To apply for free and reduced price meals for your children complete **only one** form for your household, sign your name and **return it to the address listed below**. Call the Director of Food Service at **267-1096**, if you need help. **Income or SNAP documentation required with applications**. Additional names may be listed on a separate paper.

Return Completed Applications to:

**Pittsford Food Service Department
100 Mendon Center Road
Pittsford, NY 14534**

1. List all children in your household who attend school:

Student Name	School	Grade/Teacher	Foster Child	Homeless, Migrant, Runaway
			<input type="checkbox"/>	<input type="checkbox"/>
			<input type="checkbox"/>	<input type="checkbox"/>
			<input type="checkbox"/>	<input type="checkbox"/>
			<input type="checkbox"/>	<input type="checkbox"/>
			<input type="checkbox"/>	<input type="checkbox"/>

2. SNAP/TANF/FDPIR Benefits:

If anyone in your household receives either SNAP, TANF or FDPIR benefits, list their name and CASE # here. **Skip to Part 4, and sign the application.**

Name: _____ CASE #: _____

3. Report all income for ALL Household Members (Skip this step if you answered 'yes' to step 2):

All Household Members (including yourself and all children that have income).

List all Household members not listed in Step 1 (including yourself) even if they do not receive income. For each Household Member listed, if they do receive income, report total income for each source in whole dollars only. If they do not receive income from any other source, write '0'. If you enter '0' or leave any fields blank, you are certifying (promising) that there is no income to report.

Name of household member	Earnings from work before deductions Amount / How Often	Child Support, Alimony Amount / How Often	Pensions, Retirement Payments Amount / How Often	Other Income, Social Security Amount / How Often	No Income
	\$ ____ / ____	\$ ____ / ____	\$ ____ / ____	\$ ____ / ____	<input type="checkbox"/>
	\$ ____ / ____	\$ ____ / ____	\$ ____ / ____	\$ ____ / ____	<input type="checkbox"/>
	\$ ____ / ____	\$ ____ / ____	\$ ____ / ____	\$ ____ / ____	<input type="checkbox"/>
	\$ ____ / ____	\$ ____ / ____	\$ ____ / ____	\$ ____ / ____	<input type="checkbox"/>
	\$ ____ / ____	\$ ____ / ____	\$ ____ / ____	\$ ____ / ____	<input type="checkbox"/>

Total Household Members (Children and Adults)

*Last Four Digits of Social Security Number: XXX-XX- ____ - ____

I do not have a SS# ☐

*When completing section 3, an adult household member must provide the last four digits of their Social Security Number (SS#), or mark the "I do not have a SS# box" before the application can be approved.

4. Signature: An adult household member must sign this application before it can be approved.

I certify (promise) that all the information on this application is true and that **all income is reported**. I understand that the school officials may verify the information and if I purposely give false information, I may be prosecuted under applicable State and Federal laws, and my children may lose meal benefits.

Signature: _____ Date: _____

Email Address: _____

Home Phone: _____ Work Phone: _____ Home Address: _____

DO NOT WRITE BELOW THIS LINE – FOR SCHOOL USE ONLY

Annual Income Conversion (Only convert when multiple income frequencies are reported on application)

Weekly X 52; Every Two Weeks (bi-weekly) X 26; Twice Per Month X 24; Monthly X 12

☐ SNAP/TANF/Foster

☐ Income Household: Total Household Income/How Often: ____ / ____ Household Size: ____

☐ Free Meals ☐ Reduced Price Meals ☐ Denied/Paid

Signature of Reviewing Official _____ Date Notice Sent: _____

Support Pittsford Central PTSA

Pittsford Central PTSA 2024-2025 School Year (One Form per Household)

Register Online

Log onto *Pittsfordptsa.net* and follow the prompts to pay with your credit card.

(This is the PTSA preferred method)

Family (Last Name) _____

Adult Name 1 (First and Last Name) _____

Telephone _____ E-mail address _____

Adult Name 2 (First and Last Name) _____ (for family memberships with additional voting adult)

Telephone _____ E-mail address _____

Student Name (First and Last Name) _____ (for student only memberships)

Street _____

City _____ Zip _____

Please check each school with which you are affiliated:

☐ Allen Creek Elementary ☐ Jefferson Road Elementary ☐ Park Road Elementary

☐ Mendon Center Elementary ☐ Thorrell Road Elementary ☐ Barker Road Middle School

☐ Calkins Road Middle School ☐ Mendon High School ☐ Sutherland High School

☐ District Office ☐ Community Member

Minimum family donation is \$17.00 and minimum administrative/faculty/staff/student donation is \$8.00, but a larger *contribution* is greatly appreciated.

\$8 Faculty/Staff (*home building*) _____

\$17 Family (allows for one voting adult) \$27 Family membership with additional voting adult

\$8 Family w/PCSD employee(s) (*home building*) _____

\$8 Student only _____ Additional donation _____

Amount enclosed: \$ _____

Make checks payable to: Pittsford PTSA
Return to: P.O. Box 781, Pittsford, NY 14534 or your building membership chair
(Contributions to PTSA are tax-deductible)

Pittsford District PTSA will not use this information for any purpose other than providing NYS PTA with the required membership data.

Remember to subscribe to PTSA E-News at www.pittsfordptsa.net.

Like us on Facebook at www.facebook.com/pittsfordptsa

Pittsford Central PTSA 2024-2025 School Year

All contributions more than the minimum will remain with the Pittsford Central PTSA and will be used to fund programs and activities within the Pittsford Central School District.

Check out these websites for parenting information, advocacy and legislation updates, and answers to frequently asked questions.

Pittsford Central PTSA will not use this information for any purpose.

Pittsford PTSA at www.pittsfordptsa.net

Genesee Valley Region PTA at www.gvpta.org

NY State PTA at www.nyspta.org

National PTA at www.pta.org

When you support Pittsford Central PTSA, you also support the NY State PTA and the National PTA. Being part of these organizations allows us to advocate for the needs of all children in the state and the nation - not just our own.

You have many reasons to support the Pittsford Central PTSA But the most important ones are your children

Your support is a funding source for:

- Student directories & school newsletters
- Art Ambassadors & Science Action program
- Visiting Author program
- Cultural arts (field trips, assemblies, visiting educators & speakers)
- After School Enrichment programs
- Book Fairs (fundraising)
- Back to School Picnics & Open House Nights
- Middle school agendas and PCSD calendars
- Safe senior celebrations
- Middle School Fun nights and celebrations
- Teacher appreciation celebrations, and much, much more!
- Parent resources (presentations and professional speakers)

Mission Statement

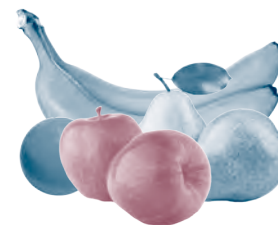
The Pittsford Central PTSA is dedicated to understanding, representing, and advocating for the needs of parents, teachers and students within the Pittsford school community and to promoting a partnership that ensures all students a successful education within a safe and nurturing environment.

Thank you for supporting Pittsford Central PTSA!



Feeding our students healthy lunches!

The Food Services Department looks forward to serving our students nutritious and delicious meals again this upcoming school year. With a wide variety of options, including seasonal fruits and vegetables, the District ensures students can get a healthy meal at an affordable price.



Let's do Lunch

Lunches will be offered for \$4.00 at the elementary level, \$4.25 at the middle school level and \$4.50 at the high school level. Monthly menus are available on the District website, www.pittsfordschools.org, on the Food Services Department page.

A lunch consists of an entrée and a choice of three sides.



Students can choose any three of these healthy options as their side dishes:

- Seasonal fresh fruit (apples, oranges, etc.)
- Canned fruit
- Assorted Chilled Vegetables
- Hot vegetable (beans, broccoli, butternut squash, etc.)
- Fat-free milk (white or chocolate)
- Assorted juices (apple, orange or grape)

Payment Options

MySchoolBucks.com

- This system allows you to place money on your student's account from your credit card, debit account or checking account
- A service charge, which does not go to the District, is administered per transaction
- The Food Services Department encourages parents and guardians to add funds in larger increments to avoid multiple service charges from MySchoolBucks
- With this system, it is also possible to set up a payment schedule where funds can be automatically added when a certain balance is reached or on a specific day

Checks

- Please make checks payable to Pittsford Food Service. You can send cash or checks in person or by mail to: Pittsford Food Service Department, 100 Mendon Center Road, Pittsford, NY 14534 **OR** send monies to school with your child to give to the cafeteria staff.
- A minimum amount required for a check deposit is \$10
- A \$15 fee will be assessed for all refunds and any checks returned for insufficient funds

We won't let students go hungry if there is a zero balance in their account. If students forget their money, they will be allowed to charge one meal. Charges should be paid off the following day. No ala carte purchases can be made if there is a negative balance.

Lunch Sampling

Elementary School - \$4.00

Main Entrée Options:

- Grilled or Breaded Chicken Sandwich
- Hamburger or Cheeseburger
- Tacos or Taco Salad
- Salad with Protein and Grain

Alternatives to the main entrée are available on a daily basis:

- Fruit & Yogurt Box (customized at each school)
- Uncrustable PB & J

Middle School - \$4.25

Main Entrée Options:

- Mashed Potato Chicken Bowl with gravy – *A student and staff favorite!*
- Tacos or Taco Salad

Daily offerings available:

- Pizza
- Uncrustable PB & J
- Made to order Gourmet Salad or Wrap- \$6.00

High School - \$4.50

Main Entrée Options:

- Mashed Potato Chicken Bowl with gravy – *A student and staff favorite!*
- Tacos or Taco Salad

Daily offerings available:

- Delivery Pizza
- Uncrustable PB & J
- Made to order Gourmet Salad or Wrap- \$6.00



Pittsford Schools

PITTSFORD, NEW YORK

February 2025

SUNDAY	MONDAY	TUESDAY	WEDNESDAY	THURSDAY	FRIDAY	SATURDAY
Keys to ABBREVIATIONS AC Allen Creek Elementary BRMS Barker Road Middle School CRMS Calkins Road Middle School JR Jefferson Road Elementary MC Mendon Center Elementary PR Park Road Elementary TR Thornell Road Elementary MHS Pittsford Mendon High SHS Pittsford Sutherland High	Exhibition of Park Road Elementary School Artwork at BRMS McCluski Room and at the Pittsford Community Library					<div>1</div> <ul style="list-style-type: none"> • BRMS Gr 7-8 Musical, MHS Auditorium, 2pm • BRMS Gr 7-8 Musical, MHS Auditorium, 7pm • Pink the Rink, 5pm JV, 6pm varsity, Tim Hortons Iceplex
2	3	4	5	6	7	8
	<ul style="list-style-type: none"> • MC Ski Club, 3:15-9pm • TR Ski Club, 3:15-9pm • QUEST Parent Meeting at Pittsford Community Center, 7-8pm • SEPTA Meeting, 7pm <div>①</div>	<ul style="list-style-type: none"> • BRMS Ski Club • Board of Education Budget Work Session, BRMS McCluski Room, 6-7pm • Board of Education Meeting, School Report by PR, BRMS McCluski Room, 7-9pm <div>②</div>	<ul style="list-style-type: none"> • SHS Ski Club, 3:15-10pm • Teacher Center Policy Board Meeting, BRMS 404, 3:30-4:30pm • BRMS 7th and 8th Grade Select Chorus, Jazz Ensemble, Chamber Orchestra, Auditorium, 7pm • JR Gr. 5 Chorus and Band Concert, Auditorium, 7pm <div>③</div>	<ul style="list-style-type: none"> • MHS Lunch Dismissal Required Meeting, 7:15am • CRMS Gr 7-8 Musical, Auditorium, 7pm • TR Gr 5 Chorus and Band Concert, Auditorium, 7pm • CRMS Ski Club <div>④</div>	<ul style="list-style-type: none"> • AC PTSA Meeting, 9:30-10:30am • BRMS Gr 6 Fun Night, 6-8pm • CRMS Gr 7-8 Musical, Auditorium, 7pm • TR Feb Fun Night, 6-8pm <div>⑤</div>	<ul style="list-style-type: none"> • ACT, SHS, 8am • CRMS Gr 7-8 Musical, Auditorium, 2pm • MHS FAME Cabaret, 7pm

9	10	11	12	13	14	15
	<ul style="list-style-type: none"> MC Ski Club Make-up Day, 3:15-9pm DEI (Diversity, Equity, Inclusion) PTSA meeting, 7-8pm ⑥	<ul style="list-style-type: none"> MC PTSA Meeting, Cafeteria, 9:15-10:15am PR PTSA Meeting, 10-11am SHS String Extravaganza, Auditorium, 7pm BRMS Ski Club ①	<ul style="list-style-type: none"> SHS Ski Club, 3:15-10pm MHS String Extravaganza, Auditorium, 7pm ②	<ul style="list-style-type: none"> Board of Education District Office Visit, 8am BRMS PTSA Meeting, 9-10am District Band Festival (MHS), 7pm CRMS Ski Club ③	<ul style="list-style-type: none"> BRMS/CRMS We Love Music Assembly, Auditorium, 10:30am ④	
16	17	18	19	20	21	22
	<div>← Presidents Week Recess →</div>					
	Schools Closed	Schools Closed	Schools Closed	Schools Closed	Schools Closed	
23	24	25	26	27	28	29
		<ul style="list-style-type: none"> Board of Education Budget Work Session, BRMS McCluski Room, 6-7pm Board of Education Meeting, BRMS McCluski Room, 7-9pm ⑤		<ul style="list-style-type: none"> Kindergarten Information Night at Elementary Schools, 6-7pm ②		③



Pittsford Schools

PITTSFORD, NEW YORK

March 2025

SUNDAY	MONDAY	TUESDAY	WEDNESDAY	THURSDAY	FRIDAY	SATURDAY
<p>Keys to ABBREVIATIONS</p> <p>AC Allen Creek Elementary</p> <p>BRMS Barker Road Middle School</p> <p>CRMS Calkins Road Middle School</p> <p>JR Jefferson Road Elementary</p> <p>MC Mendon Center Elementary</p> <p>PR Park Road Elementary</p> <p>TR Thornell Road Elementary</p> <p>MHS Pittsford Mendon High</p> <p>SHS Pittsford Sutherland High</p>	<p>Exhibition of Calkins Road Middle School Artwork at BRMS McCluski Room and at the Pittsford Community Library</p>					1
2	3	4	5	6	7	8
	<ul style="list-style-type: none"> District Band Festival (SHS), 7pm ④ 	<ul style="list-style-type: none"> CRMS PTSA Meeting, Auditorium, 7-8:30pm MHS Winter Concert Part 1, Auditorium, 7pm SEPTA Meeting, 7pm ⑤ 	<ul style="list-style-type: none"> Teacher Center Policy Board Meeting, BRMS 404, 3:30-4:30pm District PTSA Meeting, PR, 7-9pm ⑥ 	<ul style="list-style-type: none"> MHS Winter Concert Part 2, Auditorium, 7pm Board of Education CRMS Visit/Tour 7:15am ① 	<ul style="list-style-type: none"> AC Sock Hop, CRMS, 6-8pm MCE International Day MCSMA Jr. High All County Music Festival, Hilton ② 	<ul style="list-style-type: none"> SAT, MHS, 8am MCSMA Jr. High All County Music Festival, Hilton

9	10	11	12	13	14	15
	<ul style="list-style-type: none"> • DEI (Diversity, Equity, Inclusion) PTSA meeting, 7-8pm • CRMS Book Fair • TR Book Fair ③	<ul style="list-style-type: none"> • Gr K-5 Early Dismissal for Parent/Guardian Conferences, 11:44am • CRMS Book Fair • TR Book Fair • Board of Education Budget Work Session, BRMS McCluski Room, 6-7pm • Board of Education Meeting, School Report by CRMS, BRMS McCluski Room, 7-9pm ④	<ul style="list-style-type: none"> • CRMS Book Fair • TR Book Fair ⑤	<ul style="list-style-type: none"> • MHS PTSA Meeting, 8:30-9:30am • CRMS Book Fair • TR Book Fair ⑥	<ul style="list-style-type: none"> • BRMS/CRMS Unified Basketball, 6pm • CRMS Book Fair • MCSMA Sr. High All County Music Festival, Roberts Wesleyan College • TR Book Fair Gr K-5 Report Cards Posted ①	<ul style="list-style-type: none"> • MCSMA Sr. High All County Music Festival, Roberts Wesleyan College
16	17	18	19	20	21	22
	Spring Varsity and JV Sports Start ②	<ul style="list-style-type: none"> • MC PTSA Meeting, Cafeteria, 9:15-10:15am • TR PTSA Meeting, 3-4pm ③	<ul style="list-style-type: none"> • PR PTSA Meeting, 10-11am • PTSA Joint Secondary Speaker Meeting SHS/MHS/BRMS/CRMS, CRMS Auditorium, 7-8:30pm ④	<ul style="list-style-type: none"> • Board of Education Transportation/Central Maintenance/Food Service Tour 8:45am; Visit 9am • MHS PTSA Meeting, 8:30-9:30am • SHS Musical, Auditorium, 7pm ⑤	<ul style="list-style-type: none"> • MCSMA Elementary All-County Music Festival, CRMS • BRMS Gr 7 Fun Night, 6-8pm • SHS Musical, Auditorium, 7pm ⑥	<ul style="list-style-type: none"> • MCSMA Elementary All-County Music Festival, CRMS • SHS Musical, Auditorium, 2pm • SHS Musical, Auditorium, 7pm
23	24	25	26	27	28	29
30	31					
	<ul style="list-style-type: none"> • AC Gr 5 Band and Orchestra Concert, Auditorium, 7pm ①	<ul style="list-style-type: none"> • SHS Winter Concert Part 1, Auditorium, 7pm ②	<ul style="list-style-type: none"> • JR PTSA Meeting, 7-8pm ③	<ul style="list-style-type: none"> • CRMS Music in Our Schools Month Assembly, During the Day, Auditorium ④	Schools Closed - Superintendent's Conference Day <ul style="list-style-type: none"> • MCSMA Jazz Festival, Spencerport HS 	<ul style="list-style-type: none"> • MCSMA Jazz Festival, Spencerport HS

Please visit www.pittsfordschools.org for the most up-to-date calendar information.



Pittsford Schools

PITTSFORD, NEW YORK

April 2025

SUNDAY	MONDAY	TUESDAY	WEDNESDAY	THURSDAY	FRIDAY	SATURDAY
Keys to ABBREVIATIONS AC Allen Creek Elementary BRMS Barker Road Middle School CRMS Calkins Road Middle School JR Jefferson Road Elementary MC Mendon Center Elementary PR Park Road Elementary TR Thornell Road Elementary MHS Pittsford Mendon High SHS Pittsford Sutherland High	Exhibition of Sutherland High School Artwork at BRMS McCluski Room and at the Pittsford Community Library	1	2	3	4	5
		• SEPTA Meeting, 7pm ⑥	• Teacher Center Policy Board Meeting, BRMS 404, 3:30-4:30pm • SHS Winter Concert Part 2, Auditorium, 7pm ①	• Board of Education SHS Visit/Tour, 7:15am • MHS Musical, Auditorium, 7pm ②	• CRMS Gr 7 Fun Night, 6-8pm • CRMS Talent Showcase, 7pm • MHS Musical, Auditorium, 7pm Third Marking Period Ends (Gr 6-12) ③	• MHS Musical, Auditorium, 2pm • MHS Musical, Auditorium, 7pm
6	7	8	9	10	11	12
	• DEI (Diversity, Equity, Inclusion) PTSA meeting, 7-8pm ④	• Board of Education Budget Adoption and Regular Meeting, School Report by SHS, BRMS McCluski Room, 7-9pm ⑤	• District PTSA Meeting, MHS, 7-9pm ⑥	• MHS Lunch Dismissal Required Meeting, 7:15am • BRMS PTSA Meeting, 9-10am • AC PTSA Meeting, 6:30-7:30pm ①	②	• ACT, SHS, 8am

13	14	15	16	17	18	19
	 Schools Closed					
20	21	22	23	24	25	26
	Board of Education Election Petitions Due to School District Clerk by 5pm ③	• AC Book Fair, 9am-3pm • PR PTSA Meeting, 10-11am • MC PTSA Meeting, Cafeteria, 6:30-7:30pm ④	• JR PTSA Meeting, 9-10am • AC Book Fair, 9am-3pm • AC Spring Celebration, 6:30-8pm ⑤	• Board of Education AC Tour 7:30am; Visit 7:45am • MHS PTSA Meeting, 8:30-9:30am • AC Book Fair, 9am-3pm • PTSA Honorary Life Membership Awards, 7pm ⑥	• AC Book Fair, 9am-12pm ①	
27	28	29	30			
	②	• Pittsford Power Hour, CRMS Commons, 6:30-7:30pm • NYS Gr 3-8 ELA Assessments ③	• QUEST PTSA Meeting, 7-8pm • PR Book Fair • NYS Gr 3-8 ELA Assessments ④			

Please visit www.pittsfordschools.org for the most up-to-date calendar information.



Pittsford Schools

PITTSFORD, NEW YORK

May 2025

SUNDAY	MONDAY	TUESDAY	WEDNESDAY	THURSDAY	FRIDAY	SATURDAY
Keys to ABBREVIATIONS AC Allen Creek Elementary BRMS Barker Road Middle School CRMS Calkins Road Middle School JR Jefferson Road Elementary MC Mendon Center Elementary PR Park Road Elementary TR Thornell Road Elementary MHS Pittsford Mendon High SHS Pittsford Sutherland High	Exhibition of Allen Creek Elementary School Artwork at BRMS McCluski Room and at the Pittsford Community Library			1 • BRMS Gr 5 go 6 Parent/Guardian Information Posted • CRMS Gr 5 go 6 Parent/Guardian Information Posted • PR Book Fair • PR Open House/Ice Cream Social, 5:30-7pm • TR Open House, 6-7:30pm ⑤	2 • CRMS Gr 5 go 6 Fun Night, 6-8pm • District Jazz Concert, SHS Auditorium, 7pm ⑥	3 • SAT, MHS, 8am
4	5	6	7	8	9	10
	• DEI (Diversity, Equity, Inclusion) PTSA meeting, 7-8pm ①	• JR Gr 2 Performance, Auditorium, 5:45pm • MC Gr 4 Chorus and Orchestra Concert, Auditorium, 6:30pm • PR Gr 5 Chorus and Band Concert, Auditorium, 6:30pm • PTSA Meet the Board of Education Candidates, 7pm ②	• Teacher Center Policy Board Meeting, BRMS 404, 3:30-4:30pm • SEPTA Meeting, 7pm • NYS Gr 3-8 Math Assessments ③	• JR PTSA Meeting, 7-8pm • NYS Gr 3-8 Math Assessments ④	• BRMS Gr 5 Fun Night, 6-8pm ⑤	

AP Exams

11	12	13	14	15	16	17
	<div>← AP Exams →</div>					
	<ul style="list-style-type: none"> AC PTSA Meeting, 9:30-10:30am CRMS Select Ensembles Concert, Auditorium, 7pm BRMS Gr 7 & 8 Chorus Concert, Auditorium, 7pm 	<ul style="list-style-type: none"> NYS Gr 5 Science Assessments NYS Gr 8 Science Assessments Board of Education Budget Hearing and Regular Meeting, School Report by AC, BRMS McCluski Room, 7-9pm 	<ul style="list-style-type: none"> NYS Gr 5 Science Assessments SHS PTSA Meeting, SHS Faculty Lounge, 8-9:30am JR Open House/Art Show/Ice Cream Social, 5-7pm AC Gr 4 Chorus Concert, Auditorium, 6:30pm MC Gr 5 Chorus and Band Concert, Auditorium, 7pm PR Gr 4 Chorus and Orchestra Concert, Auditorium, 7pm AC Gr 5 Chorus Concert, Auditorium, 7:15 pm 	<ul style="list-style-type: none"> MHS PTSA Meeting, 8:30-9:30am MC Open House, 6-7:30pm JR Gr 5 Chorus and Band Concert, Auditorium, 7pm TR Gr 4 and 5 Choruses, Band and Orchestra Concert, BRMS, 7pm 	<ul style="list-style-type: none"> AC Fun Run, 9am-12pm CRMS Gr 6 Fun Night, 6-8pm 	<ul style="list-style-type: none"> MHS Junior Prom/Senior Ball, 8:30-11pm
18	19	20	21	22	23	24
	<ul style="list-style-type: none"> CRMS All Orchestras Concert, Auditorium, 7pm MHS Tri-M Induction, Auditorium, 7pm SHS Fine Arts Festival Applications for Absentee & Early Ballots Due in Person to School District Clerk for 2025-26 Budget Vote 	<ul style="list-style-type: none"> TR PTSA Meeting, 8-9am MC PTSA Meeting, Cafeteria, 9:15-10:15am BRMS Gr 7 & 8 Orchestra Concert, Auditorium, 7pm JR Gr 4 Chorus and Orchestra Concert, Auditorium, 7pm SHS Fine Arts Festival School District 2025-26 Budget Vote and School Board Election, Location TBD, 7am-9pm Absentee & Early Ballots Due by 5pm for 2025-26 Budget Vote 	<ul style="list-style-type: none"> PR PTSA Meeting, 10-11am SHS Fine Arts Festival Opening Reception, LGI, 5-7pm BRMS Gr. 7 & 8 Band Concert, MHS Auditorium, 7pm CRMS All Bands Concert, Auditorium, 7pm JR PTSA Bike to School Day 	<ul style="list-style-type: none"> BRMS PTSA Meeting, 9-10am PCSD Retirement and Recognition Event, 4:30pm SHS Fine Arts Festival 	<ul style="list-style-type: none"> JR PTSA Bike to School Day Rain Date SHS Fine Arts Festival 	
25	26	27	28	29	30	31
	Schools Closed - Memorial Day	<ul style="list-style-type: none"> CRMS PTSA Meeting, Auditorium, 9-10:30am MHS Gr 9-11 Awards Night & NHS Induction, 6:30-8:30pm SHS Gr 9-11 Awards Night, Auditorium, 7-8:30pm 	<ul style="list-style-type: none"> BRMS Gr 6 All Ensembles and Select Chorus, MHS Auditorium, 7pm CRMS All Choruses Concert, Auditorium, 7pm 	<ul style="list-style-type: none"> Board of Education MCTour 7:30am; Visit 7:45am MHS Final Chorus Concert, Auditorium, 7pm SHS Final Band Concert, Auditorium, 7pm 	<ul style="list-style-type: none"> JR Family Fun Night, 5-7pm MHS Small Ensemble Concert, Auditorium, 7pm 	<ul style="list-style-type: none"> SHS Junior & Senior Prom, 7:30-10pm

Please visit www.pittsfordschools.org for the most up-to-date calendar information.



Pittsford Schools

PITTSFORD, NEW YORK

June 2025

SUNDAY	MONDAY	TUESDAY	WEDNESDAY	THURSDAY	FRIDAY	SATURDAY
1	2	3	4	5	6	7
	<ul style="list-style-type: none"> BRMS/CRMS Wind Ensemble & Percussion Ensemble, CRMS Auditorium, 7pm 	<ul style="list-style-type: none"> District PTSA Meeting, CRMS, 7-9pm Fine Arts Festival, MHS Small Gym 	<p>Regents Exams (Gr 9-12 report for exams only. School in session for Gr K-8)</p> <ul style="list-style-type: none"> Teacher Center Policy Board Meeting, BRMS 404, 3:30-4:30pm BRMS Gr 7 & 8 Select Chorus, Jazz Ensemble, Chamber Orchestra, Auditorium, 7pm MHS Fine Arts Festival, MHS Small Gym 	<ul style="list-style-type: none"> AC PTSA Meeting, 9:30-10:30am MHS Fine Arts Festival <ul style="list-style-type: none"> Opening Reception, MHS Small Gym, 6-8pm MHS Final Orchestra Concert, Auditorium, 7pm SHS Final Chorus Concert, Auditorium, 7pm 	<ul style="list-style-type: none"> BRMS Gr 8 Bash, 6-8pm BRMS Gr 6 Musical, Auditorium, 7pm CRMS Gr 8 Bash, 6-8pm 	<ul style="list-style-type: none"> ACT, SHS, 8am BRMS Gr 6 Musical, Auditorium, 2pm
8	9	10	11	12	13	14
<ul style="list-style-type: none"> MC PTSA Meeting, Cafeteria, 9:15-10:15am MHS Final Band Concert, Auditorium, 7pm SHS Concerto Concert, Auditorium, 7pm 		<p>Regents Exams (School in session for all grades)</p> <ul style="list-style-type: none"> SHS Final Orchestra Concert, Auditorium, 7pm AC Gr 4-5 Field Day MC Gr 4-5 Field Day 	<ul style="list-style-type: none"> MHS Senior Vocal Recital, Auditorium, 7pm SHS Senior Awards Night, Auditorium, 7-8:30pm MC Gr 4-5 Field Day Rain Date TR Field Day 	<ul style="list-style-type: none"> SHS Vocal Recital, Auditorium, 6pm SHS Small Vocal Ensemble Concert, Auditorium, 7pm MHS Senior Awards Night, Auditorium, 6:30-9pm PR Gr. 5 Performance, 6:30pm AC Gr K-3 Field Day MC Gr 1-3 Field Day 	<ul style="list-style-type: none"> PR Flag Day, 9:30am TR Flag Day, 9:30am JR Flag Day, 10am MC Gr 1-3 Field Day Rain Date TR End of Year Picnic, 5-7pm 	

15	16	17	18	19	20	21
	<ul style="list-style-type: none"> SHS NHS Induction & Honor Graduates Recognition, Auditorium, 7-8pm PR Gr 1-2 Field Day TR Field Day Rain Date 	<p>← Regents Exams → (Gr 9-12 report for exams only. School in session for Gr K-8)</p> <ul style="list-style-type: none"> MHS/SHS Back to the Future Day, 9am TR PTSA Meeting, 12-1pm Board of Education Meeting, School Report by MC, BRMS McCluski Room, 7-9pm 	<ul style="list-style-type: none"> MC Gr 5 Moving Up Ceremony, 9am Sports Excellence Banquet, SHS Stadium, 6:30pm PR Gr 3-5 Field Day 	Schools Closed - Juneteenth	<p>Regents Exams (Gr 9-12 report for exams only. School in session for Gr K-8)</p> <ul style="list-style-type: none"> AC Gr 5 Moving Up Ceremony, 9:30am JR Gr 5 Moving Up Ceremony, 10am PR Gr 5 Moving Up Ceremony, 10am TR Gr 5 Moving Up Ceremony BRMS, 1-2pm <p>K-5 Report Cards/Special Area Report Cards</p>	<ul style="list-style-type: none"> SHS Graduation, RIT Gordon Field House, 10am MHS Graduation, RIT Gordon Field House, 2pm
22	23	24	25	26	27	28
		<p>← Regents Exams → (Gr 9-12 report for exams only. School in session for Gr K-8)</p>	<p>Last Day of School for Elementary School Students (if legal requirements have been met, the last day of school for elementary students could be as early as June 20).</p> <p>Fourth Marking Period Ends (Gr 6-12)</p>	<ul style="list-style-type: none"> Regents Rating Day 		
29	30				<p>Exhibition of Mendon Center Elementary School Artwork at BRMS McCluski Room and at the Pittsford Community Library</p>	<p><u>Keys to ABBREVIATIONS</u></p> <p>AC Allen Creek Elementary</p> <p>BRMS Barker Road Middle School</p> <p>CRMS Calkins Road Middle School</p> <p>JR Jefferson Road Elementary</p> <p>MC Mendon Center Elementary</p> <p>PR Park Road Elementary</p> <p>TR Thornell Road Elementary</p> <p>MHS Pittsford Mendon High</p> <p>SHS Pittsford Sutherland High</p>



Pittsford Schools

PITTSFORD, NEW YORK

July 2025

SUNDAY	MONDAY	TUESDAY	WEDNESDAY	THURSDAY	FRIDAY	SATURDAY
		1	2	3	4	5
6	7	8 <ul style="list-style-type: none">• Board of Education Summer Workshop• Board of Education Reorganization/ Regular Meeting, BRMS McCluski Room, 5pm	9 <ul style="list-style-type: none">• Board of Education Summer Workshop	10	11	12
13	14	15	16	17	18	19
20	21	22	23	24	25	26
27	28	29	30	31		

Dear Parents/Guardians:

Differences in culture, gender, generations, backgrounds, and religion shape who we are as a school community. Our community becomes more diverse every year, increasing the importance of sensitivity to families and students from a variety of backgrounds and beliefs. Respect and acceptance to such a diversity of students is vitally necessary to those of us who are responsible for modeling the behavior we want in our children.

The District strives to promote inclusivity through its policies and actions. Our community and school district are sensitive to the issues of religious freedom. It is our belief and practice that every student should be supported and protected with respect to religious philosophies and observances.

Our curriculum appropriately recognizes the impact of religion on cultures, institutions, and individuals. Instruction may be provided about the influence and customs of world religions. Displays of associated symbols are appropriate if they are clearly used as part of a curriculum dealing with cultures or customs.

Parents have a right to determine when their children will be absent from school because of a religious observance. Students will not be penalized or suffer prejudicial consequences for an excused absence for religious observance and will be allowed reasonable opportunities to make up work missed during such absences. Parents are encouraged to inform the school as soon as possible of the absence so that arrangements can be made for any missed work. The school principal should be contacted if any questions or problems occur.

Your cooperation is appreciated as we strive to foster an environment that respects and values the rich diversity of our community and schools.

Sincerely,



Michael Pero
Superintendent of Schools

As part of the Pittsford Central School District's Religious Observance policy, this cultural and religious holiday sampling has been included in this District calendar. The purpose of noting these days is to assist staff, students and community members in their awareness and understanding of the various religions in the Pittsford community.

Please note that: 1) all Jewish and Baha'i holidays begin at sundown the previous day; 2) Hindu and Jain holidays are calculated on a lunar calendar and, therefore, are observed at different times in different regions of the country; 3) some religions have different sects which may celebrate religious holidays on different dates, for varying lengths of times.

We have worked hard to ensure as accurate a representation of the religions of our community as possible. This calendar is not intended to include all religious holidays. Sources for the descriptions were local community members, the Pittsford Religious Observance Advisory Council and www.interfaithcalendar.org.

A Sampling of Cultural and Religious Holidays

August 30

Paryushana Parva: The most important festival of the Jain community, this eight day festival of repentance and forgiveness includes fasting, prayer and meditations. (JA)

October 2 (at sundown) - 4 (at sundown)

Rosh Hashanah: Begins one of the holiest periods of the Jewish year; often referred to as the "Jewish New Year," the period of prayer and reflection concludes on Yom Kippur. (J)

October 11 (at sundown) - 12

Dasara: Festival celebrating the victory of good over evil. (H)

October 11 (at sundown) - 12 (at sundown)

Yom Kippur: Means "Day of Atonement," most important Jewish holy day, devoted to prayer, fasting and repentance. Even non-observant Jews may set this day aside for synagogue observances. (J)

October 16 (at sundown) - October 24 (at sundown)

Sukkot: Jewish "Festival of Booths" (or tabernacles); a fall festival of thanksgiving. (J)

October 31

Diwali: (Deepavali) One of four popular seasonal festivals; known as the "Festival of Lights," dedicated to Goddess Kali in Bengal and to Lakshmi, Goddess of Wealth, in rest of India. (H, JA, S)

November 1 (at sundown) - 2 (at sundown)

Birth of the Bab: Anniversary of the birth of one of the twin Prophet Founders of the Baha'i faith; Shrine of the Bab, in Haifa, Israel, is the World Centre for Baha'is. (BA)

November 2 (at sundown) - 3 (at sundown)

Birth of Baha'u'llah: Commemorates the birth of the founder of Baha'i faith in 1817, an independent world religion originating in Persia. Work suspends for the day. (BA)

December 25 (at sundown) - January 2 (at sundown)

Hanukkah: A popular cultural Jewish festival known as the "Festival of Lights." The eight-day commemoration of the rededication of the Second Temple of Jerusalem. (J)

December 25

Christmas: Celebration of the anniversary of the birth of Jesus Christ, upon whose teachings Christianity is based. (C)

December 26 - January 1

Kwanzaa: African American seven-day spiritual festival dedicated to seven principles: unity, self-determination, collective work and responsibility, cooperative economics, purpose, creativity and faith. The American celebration is related to the spirit and rituals of the harvest festivals of Africa.

January 29

Lunar New Year: Also known as Spring Festival, marks the end of the winter season. The festival begins on the first day of the first month in the traditional Chinese calendar and ends on the 15th day.

February 12

Magha Puja Day: Celebration to honor Buddha and his teachings by not committing any kind of sin, doing only good and purifying one's mind. (B)

February 15

Nirvana Day: A regional observance commemorating the death of the Buddha. (B)

February 28 (at sundown) - March 1

Ramadan: The holy month (30 days) of fasting for Islam begins on this day and abstinence occurs from dawn to sundown. The month ends with the feast of Eid al-Fitr, a festival of thanksgiving when observant Muslims take off from work or school to gather for a day of prayer. (I)

March 5

Ash Wednesday: The beginning of Christian Lent, the 40-day period of prayer, repentance and self-denial that precedes Easter. (C)

March 13 (at sundown) - 14

Holi: or Phagwah commemorates the slaying of the demoness Holika by Lord Vishnu's devotee Prahlad. It is a popular spring festival known as the Festival of Colors. (H)

March 13 (at sundown) - 14

Purim: "Feast of Lots" celebrates deliverance of the Jews of ancient Persia from a plot to destroy them. (J)

March 19 (at sundown) - 20 (at sundown)

Naw-Ruz: Persian and Baha'i New Year symbolizing renewal, growth. Work suspended for family time and community celebration. (BA)

March 31 (at sundown) - April 1

Eid al Fitr: The Islamic festival breaking the fast of Ramadan. (I)

April 5 (at sundown) - 6

Rama Navami: Anniversary of the birth of Lord Rama; incarnation of the God Vishnu (the Preserved). (H)

April 12 (at sundown) - 20 (at sundown)

Passover/Pesach: Eight day celebration marking the deliverance of the Jews from slavery in Egypt. Seders on the first and second days of the holiday include the reading of the Haggadah (narrative of the Exodus). (J)

April 14

Baisakhi: Anniversary of the creation of the Khalsa (the army of the Pure Ones) a Sikh New Year celebration. Greetings that wish good life in coming days are exchanged. (S)

April 18

Good Friday: The day marking Jesus' crucifixion. (C)

April 19 (at sundown) - May 1 (at sundown)

Ridvan: 12 days commemorating the declaration of Baha'u'llah, Prophet-Founder, to his followers in 1863. Work is suspended for the 1st, 9th and 12th days. (BA)

April 20

Easter: Celebration of the resurrection of Jesus Christ. The oldest and most important observance of the Christian year, initiating the 50-day period culminating in Pentecost. (C)

May 22 (at sundown) - 23 (at sundown)

Declaration of the Bab: Commemorates the day in 1844 on which the Twin Prophet Founder announced the new faith and declared his identity as the Bab, herald of the new age. (BA)

June 1 (at sundown) - 3 (at sundown)

Shavuot: "Festival of Weeks," a harvest of first fruits; commemorates the giving of the Torah and Commandments to Moses on Mt. Sinai. (J)

June 6 (at sundown) - 7

Eid al-Adha: Feast of sacrifice commemorating the faith of Abraham; marks the end of the Pilgrimage to Mecca, uniting all Muslims around the world on this day. (I)

June 8

Pentecost: Celebrates the descent of the Holy Spirit upon early Christians following the ascension of Jesus; sometimes referred to as the "birthday of the church." It is a traditional day for baptism and confirmation of new Christians. (C)

July 8 (at sundown) - 9 (at sundown)

Martyrdom of the Bab: Memorializing the death of Bab. (BA)

Key

B __ Buddhism	I __ Islam
BA __ Baha'i	J __ Judaism
C __ Christian	JA __ Jain
H __ Hinduism	S __ Sikh

Emergency Closings and Snow Day Information

Emergency Closings

We often receive questions from parents and students regarding the process used in making determinations about school closings. Schools are dismissed early or closed due to inclement weather, or other emergencies, only when absolutely necessary for the safety and welfare of students and staff.

The Pittsford Central School District resides in a snow-belt and most storms can be managed effectively. For this reason, please assume school will be open and encourage students to be prepared for their next day's studies.

We understand that a decision to open or close in bad weather will have an impact on our families. We consider many factors while making these decisions, including:

- Current and projected weather conditions.
- Road patrols by the Town and District that report the condition of local roads, sidewalks and parking lots, taking into account snow and ice, as well as other hazards such as downed trees or power lines. These reports also provide an assessment of the progress of snow clearing.
- The District also communicates with local districts about the road conditions in surrounding areas.
- Temperature and wind chill factors. Monroe County Health Department recommends that we consider closing schools if the wind chill is expected to fall between -25 and -40 degrees.

When it is necessary to close or dismiss schools for any emergency, including inclement weather, announcements are made on local radio and television broadcasts by 6:30 a.m. The information is communicated to parents through the Blackboard® notification system and the District's website at www.pittsfordschools.org.

When school is closed for the day or dismissed early, all evening school activities will be cancelled, including athletic practices and contests, club meetings, continuing education classes, and any other student after-school activities. The only exception would be a major district-wide event, such as a concert involving hundreds of students, which could be held if the weather clears sufficiently.

Provisions made by the school district during early dismissal due to an emergency include:

1. Decision for the release of students to walk home or for intermediate-level students to walk with primary students will be made by the school principal.
2. Schools will be supervised by staff until all students have departed school grounds.
3. The District is equipped to provide for students in the event it is necessary to keep them in school for several hours or overnight. This information will be reported on radio, television, web site, and through the Blackboard® notification system.

Guidelines for parents in the event of an early dismissal:

1. Special circumstances in the home (working parents, baby-sitter directions, etc.) should be reported in writing to the classroom teacher at the beginning of the school year. Children should know where to go in the neighborhood in the event no one is at their house.
2. Please do NOT call the schools. Phone lines must remain open for emergency calls only.
3. Do NOT drive to the school during inclement weather or a school-closing emergency. School driveways must be kept clear to allow access by school buses and emergency vehicles.
4. Students normally using school bus transportation will be released to their parents only after being properly signed out at the school office. Children will NOT be allowed to leave with other persons without a written release from parents.

Dear Students,

We both know how hard you work in school and that every now and then, you deserve a little break. How lucky that we live in a Snowbelt and have Mother Nature on our side. Just between us, if you follow these rules, the chances of us having a snow day just might increase:

- Put your PJs on inside out and backwards
- Place an ice cube in the toilet and flush (one for each inch of snow you want)
- Yell "Snow Day!" into the freezer
- Put a penny under your pillow
- Put a spoon under your bed
- Wear a colored sock on your left foot, but not your right
- Do a snow dance with your PJs on (backwards and inside out)! Gather up your friends for a stronger force

A snow day is a fun day to spend outside playing, so make sure you finish your homework the night before so you can enjoy the whole day in the snow!

Follow these tips and we might just have a fun snow day in the future.



Superintendent Pero

Parent/Guardian Notifications

Consent for use of Photographs/Videos

Throughout the school year, photographs or videotapes may be taken of students for use in district-produced publications, digital communication, including social media, and videos or by the news media. Please consult the Board of Education policies on the website for more information and instructions for opting your child out.

Access to Student Records

Parents/guardians of students have the right to inspect and review official educational records directly related to their children. Copies of records may be obtained from the school principal at cost.

If parents believe that any record is incorrect or misleading, they have the right to an opportunity for a hearing to challenge the contents.

As part of the Every Student Succeeds Act, military recruiters and institutions of higher education now have access to secondary student names, addresses and telephone numbers. Student directory information, including name, address, phone number, birthday, etc. are available under the Family Educational Rights and Privacy Act (FERPA). A high school student or parent may ask that the District not release such information without prior written parental consent. If you would like to participate in this option please contact the Student Services office at 267-1023.

Complaint Resolution Process for Every Student Succeeds Act (ESSA) Funded Programs

The New York State Department of Education (NYSED) has a complaint resolution process for Every Student Succeeds Act (ESSA) Funded Programs. To access the process outlined by NYSED to file complaints and allow for the timely resolution of such complaints, visit www.nysed.gov/essa/new-york-state-essa-funded-programs-complaint-procedures. The procedures meet the requirements of ESSA Section 8304(a)(3)(C) and 34 CFR Part 299, Subpart F - Complaint Procedures.

Advanced Coursework Notification

While advanced coursework provides an opportunity for your child to gain skills and demonstrate competencies at a higher level, advanced coursework provides other benefits as well. Other benefits of participation in advanced coursework may include:

- Improving a student's self-confidence and image of self.
- Demonstrating a student's preparedness for college-level coursework.
- Earning college credit(s) prior to graduation.
- Reducing future costs for higher education.

- Reducing the amount of time that the student must spend in secondary and/or post-secondary school.

For advanced coursework information, visit the Curriculum page of the District website at pittsfordschools.org.

Parental Right to Request and Review Information Regarding Teacher Qualifications

As a parent/guardian of a student in the Pittsford Central School District, you have the right to request the following information:

- Whether the teacher has met New York State qualifications and licensing criteria for the grade levels and subject areas he or she teaches
- Whether the teacher is teaching under emergency or other provisional status through which the State qualification or licensing criteria have been waived
- The teacher's college major; whether the teacher has any advanced degrees and, if so, the subject of the degrees

Requests for information about the qualifications of your child's teacher(s) can be directed to Shawn Clark, Assistant Superintendent for Human Resources at 267-1008. All requests will be honored in a timely manner.

Asbestos Compliance

The federal law AHERA, enacted in 1987, requires all school districts to inspect and develop a management plan for asbestos found in their school buildings.

PCSD is in compliance with these requirements.

PCSD facilities are inspected every six months to remain in federal and state compliance. These inspections help provide an environment that is clean and free from asbestos hazards. Other activities, which include the training of the maintenance staff to increase their awareness of asbestos and prevent disturbance while making daily surveillance checks, ensure a safer environment for staff and students.

Details of all asbestos activities are described in the district's AHERA management plan, which is available for review in the District Maintenance Building at 100 Mendon Center Road.

Legislation Regarding Religious Exemptions for Vaccines

New York State legislation (Public Health Law 2164) has eliminated religious, non-medical exemptions from school vaccination requirements, effective June 13, 2019. The revised law specifies that children in a public, private or parochial school, without an approved medical exemption, must receive the required immunizations to attend or remain in school. The District will be required to exclude a child from school if these provisions are not in place.

Notification of Pesticide Use

All public and non-public schools are required to inform parents/guardians, faculties, and staff of a New York State Education law regarding notification of pesticide use in school buildings and on school grounds during the school year. There are three communication requirements under this law:

1. Notification each fall providing information on the law and its requirements.
2. Notification 48 hours prior to certain pesticide applications at your school building. The following pesticide applications are not subject to prior notification requirements:
 - a school remains unoccupied for a continuous 72 hours following an application
 - anti-micro products
 - non-volatile rodenticides in tamper resistant bait stations in areas inaccessible to children
 - silica gels and other non-volatile ready-to-use paste, foams, or gels in areas inaccessible to children
 - boric acid and disodium octaborate tetrahydrate
 - the application of EPA designated biopesticides
 - the application of EPA designated exempt materials under 40CFR152.25
 - the use of aerosol products with a directed spray in containers of 18 fluid ounces or less when used to protect individuals from an imminent threat from stinging and biting insects including venomous spiders, bees, wasps, and hornets
3. Notification in December, April and June, if other applications have occurred.

Currently, Pittsford Central Schools does not regularly apply pesticides at any of its buildings or building sites. Prevention practices have been the preferred method of control. Any pesticide applications that may be made will be in response to a particular need at a building and would be applied by a certified pesticide control technician.

If you have any questions, please call Jeff Beardsley, Director of Operations, Maintenance & Security, at 267-1090.

Connect with PCSD - Subscribe, Follow, and Like Us!



Facebook Page

The PCSD Facebook page allows the District to stay connected with parents, staff, and the community. Links to the District website provide convenient and convergent pathways to District news and information.

- Like our District Facebook page to follow our updates.



X Feeds

PCSD has been tweeting out what's happening at each school, in addition to pertinent District information and links to the District website. Each school has its own feed, in addition to District-level and Athletics feeds.

- Connect to PCSD X feeds through the Mobile App.
- Follow us!
 - @PCSDSchools
 - @PCSDAthletics
 - @PCSDAllenCreek
 - @PCSDJeffersonRd
 - @PCSDMendonCtr
- @PCSDParkRd
- @PCSDThornellRd
- @PCSDBarkerRd
- @PCSDCalkinsRd
- @PCSDMendonHS
- @PCSDSutherland



Mobile Device App

The Finals mobile device application (app) provides parents, students and staff with access to District information at their fingertips. Features of the app include news and contact information from each school, links to social media, an event calendar, information about the Board of Education, and more.

Here's how you can download the app:

Android Users

- Download the new "Pittsford Schools" app from Google Play.

iPhone Users

- Download the new "Pittsford Schools" app from the App Store, if you don't already have it.



LinkedIn

Connect with us on LinkedIn to stay up to date on job openings, alumni news and current events! While you're there, be sure to update your work/education experience to include Pittsford Central School District if you have worked for Pittsford Schools or are an alum.

Visit our official LinkedIn page at: [linkedin.com/company/pittsford-central-school-district](https://www.linkedin.com/company/pittsford-central-school-district)



Urgent Notification System

For emergency situations, PCSD uses a notification system to quickly communicate important messages to parents and staff.

PCSD families and staff are automatically included in the email notification system; however,

- Remember to update your contact information with your school registrar whenever there is a change.
- Staff should contact the Business Office with updates.



Newsletters

The *Superintendent's eNewsletter* is a monthly publication designed to highlight immediate initiatives occurring throughout the school year. It is shared with the community via email, the website and links from Twitter and Facebook.

PCSD sends out a *quarterly newsletter* with important information and articles highlighting District-wide news and accomplishments.

A *budget newsletter* is also mailed to residents, which contains important information regarding the budget vote in May.

In addition to District newsletters, each school distributes important information to its parents and students which may include email announcements, a newsletter, and website posts on the school's web page.

- Each family and staff member should receive the District quarterly newsletters, budget newsletter and Superintendent eNewsletters. If you have not received a copy of the Superintendent's eNewsletter and would like to subscribe, visit the Superintendent's web page on the District website at www.pittsfordschools.org, and sign up today!
- For school-based newsletters, please contact your child's school to find out how information is distributed.



The PCSD YouTube channel provides parents, staff, and the community with an inside look at what is happening around the District. Within the YouTube channel, there are videos about school events, special-interest stories, and meetings. Each school has its own playlist, and there is also a District-level playlist.

To subscribe to Pittsford Central School District's YouTube channel to see our latest videos:

- Visit www.youtube.com
- Enter Pittsford Central School District in the "Search" field at the top of the page to access our channel
- Click on the "Subscribe" icon located on the upper right hand side of the page



Website

PCSD strives to maintain a website that connects with students, families, and the community. Offering the most up-to-date, ADA compliant information, the website is maintained at both the building and District levels. Highlights include information about the Board of Education and partners of PCSD, news items, a calendar of events, and video-on-demand.

The District website features include:

- Accessibility
- Ease of Navigation
- Responsiveness across multiple device platforms

Visit www.pittsfordschools.org.

Pittsford Central School District

Pittsford Schools

Allen Creek Elementary School..... 267-1200

3188 East Avenue, Rochester, NY 14618-3498

Jeffrey Pollard, Principal

Attendance Line: 267-1209

Barker Road Middle School..... 267-1800

75 Barker Road, Pittsford, NY 14534-2929

Sarah Jacob, Principal

Assistant Principal: Richard Vigdor

Attendance Line: 267-1809

Calkins Road Middle School 267-1900

1899 Calkins Road, Pittsford, NY 14534-2725

Joshua Walker, Principal

Assistant Principal: Michael Falzoi

Attendance Line: 267-1909

Jefferson Road Elementary School..... 267-1300

15 School Lane, Pittsford, NY 14534-2207

Stephanie Barg, Principal

Attendance Line: 267-1309

Mendon High School..... 267-1600

472 Mendon Road, Pittsford, NY 14534-9515

Melissa Julian, Principal

Assistant Principals: Laura Hefner, Andrea Lynch

Attendance Line: 267-1609

Mendon Center Elementary School..... 267-1400

110 Mendon Center Road, Pittsford, NY 14534-9701

Richard Albano, Principal

Assistant Principal: Jessica LeVan

Attendance Line: 267-1409

Park Road Elementary School 267-1500

50 Park Road, Pittsford, NY 14534-3639

Lindsay Ali, Principal

Attendance Line: 267-1509

Sutherland High School..... 267-1100

55 Sutherland Street, Pittsford, NY 14534-1978

Mark Puma, Principal

Assistant Principals: Linda Dickey, Tyler Manchester

Attendance Line: 267-1109

Thornell Road Elementary School..... 267-1700

431 Thornell Road, Pittsford, NY 14534-9750

Edward Foote, Principal

Attendance Line: 267-1709

Central Administration

The central administrative staff may be reached at Administrative Offices, 75 Barker Road – East Wing, Pittsford, NY 14534, or by calling 267-1000. Offices are open yearlong Monday-Friday.

Superintendent

Michael Pero

Assistant Superintendent for Business

Michael Vespi

Assistant Superintendent for Instruction

Heather Clayton

Assistant Superintendent for

Human Resources

Shawn Clark

Chief Information Officer

Jeff Cimmerer, Ed.D.

Director of Student Services

Shana Cutaia

Director of Special Education

Elizabeth Woods

Director of Communication

Nancy Chaput Wayman, APR

School Business Administrator

Terrance Hasseler

Director of Operations,

Maintenance & Security

Jeffrey Beardsley

Director of Athletics

Patrick Irving, Ed.D.

Director of Food Services

Elena Montgomery

Teacher Center Director

Nicole Barry

Director of Transportation

Carla Grove

School Hours

<i>Grade Level</i>	<i>Starting Time</i>	<i>Dismissal Time</i>
Grades 9-12	7:40am	2:21pm
Grades 6-8	7:35am	2:24pm
Grades K-5	8:40am	3:05pm

Essential Facts

Schools in Operation.....	9
Enrollment	5,597 (Oct. 2023)
Total Staff.....	1,186
Total Budget for 2024-2025.....	\$161,797,787

Pittsford Central School District
Administrative Offices
75 Barker Rd. – East Wing
Pittsford, NY 14534

Non-Profit Org.
U.S. POSTAGE
PAID
Pittsford NY 14534
Permit No. 12



Pittsford Schools

PITTSFORD, NEW YORK

Events Subject to Change

Event dates occasionally change during the school year. For the most up to date information, please refer to the online calendar on the District website at www.pittsfordschools.org.

