

Welcome to DI 2017-2018



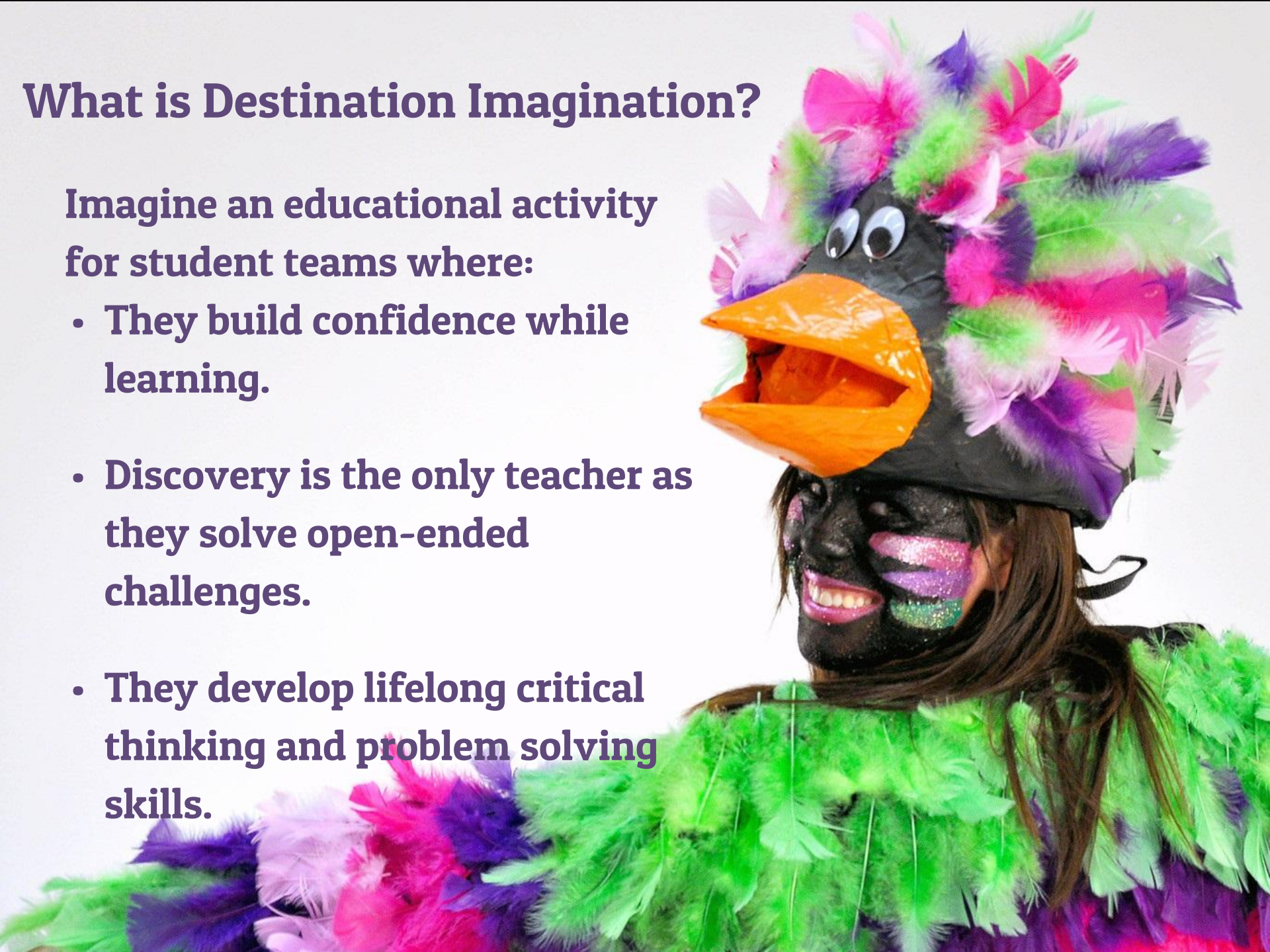
SOUTHEAST 6 REGION



What is Destination Imagination?

Imagine an educational activity for student teams where:

- **They build confidence while learning.**
- **Discovery is the only teacher as they solve open-ended challenges.**
- **They develop lifelong critical thinking and problem solving skills.**



What Does DI Believe?

Destination Imagination, Inc. believes in promoting three life-long values: Creativity, Teamwork, and Problem Solving.

Creativity – It has the power to change the world.

Teamwork – Becoming a team is a life-changing experience.

Problem Solving – Our world's future depends on extraordinary problem solvers.



Texas DI is a non-profit organization working in conjunction with affiliates across the globe to offer the *world's largest kid-powered and team-driven creative problem solving program.*



Texas DI, Southeast 6 Region, and Willis DI Want Your Students!

Kindergarten to university level students can participate.

- Rising Stars (Ages 4-7)*
- Elementary (K-5th grade)*
- Middle (6th-8th grade)
- Secondary (9th-12th grade)
- University*

**At this time, Willis ISD offers the DI program in grades 4-12.*





**Teams are
composed
of 2 to 7
members.**

Willis DI Wants Your Students!

Willis DI Wants Your Students!

Willis DI Teams compete in any of 6 Team Challenges.

- **Technical**
- **Scientific**
- **Fine Arts**
- **Improvvisational**
- **Engineering/Structural**
- **Service Learning**



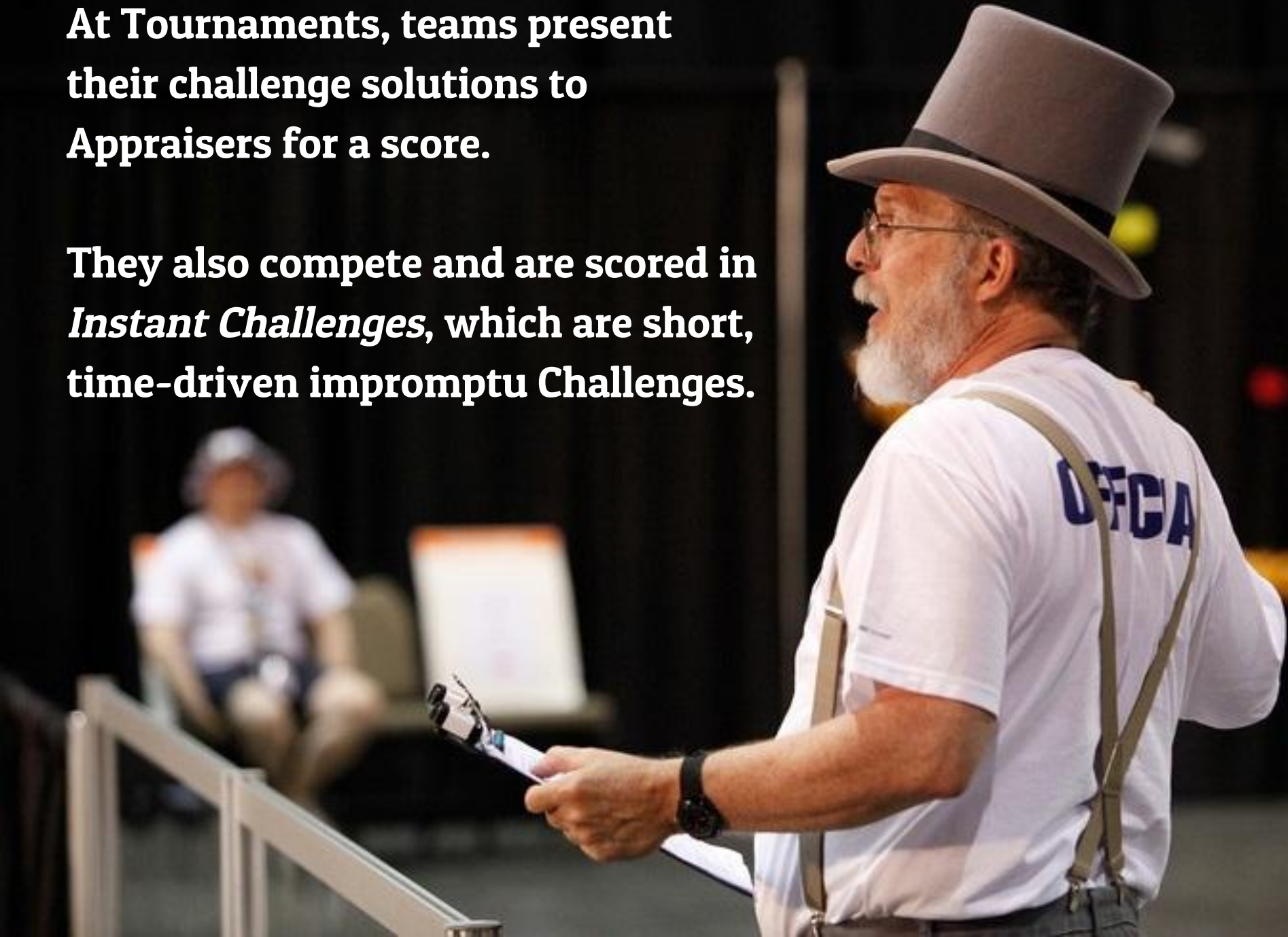
Texas DI Affiliate Program

1. Teams form in the fall.
2. Teams present their Challenge solutions at a Regional Tournament (2/17/18).
3. Winning teams advance to the State Affiliate Tournament (April 6-7, 2018).
4. Top teams advance from Texas to the DI Global Finals at the University of Tennessee in Knoxville (May 23-25, 2018).



At Tournaments, teams present their challenge solutions to Appraisers for a score.

They also compete and are scored in *Instant Challenges*, which are short, time-driven impromptu Challenges.





All teams, unless they are competing in the Improvisational Challenge, must include two *Team Choice Elements*. *Team Choice Elements* are:

- **Team determined and scored.**
- **Opportunities to showcase and receive points for team effort or skills not already assessed in the *Team Challenge*.**

Challenges help students access their creativity, learn how to work as a team, and gain experience in solving problems.

In DI, Students:

- **have FUN!**
- **gain lifelong critical and creative thinking skills.**
- **learn to work together to achieve goals.**
- **learn to listen, evaluate, and build upon teammate ideas.**
- **develop time management.**
- **build skills colleges and employers are looking for.**
- **have even more FUN!**





2017-2018 Team Challenges

Central Challenges
can take a team
several months to
solve and have
specific focuses.

**In Destination
Imagination, the
Team Challenges are
new and different
every year.**

Technical: Maze Craze



- Design and build a device to navigate a tournament-provided maze.
- Design and build a prop that transforms in the maze.
- Design and build a way to remove an object from the maze.
- Create and present a story about a journey through the maze. [SKIT]
- Create and present two Team Choice Elements that show off the team's interests, skills, areas of strength, and talents.

SKILLS: Technical Engineering & Design, Navigation Systems, Transportation Systems, Storytelling

Scientific: Unlikely Attraction



- Explore scientific concepts used in amusement park attractions.
- Design and build an attraction that uses scientific concepts during its operation.
- Create and present a story that features the attraction operating in an unlikely location. [SKIT]
- Portray the unlikely location using sights and sounds.
- Create and present two Team Choice Elements that show off the team's interests, skills, areas of strength, and talents.

SKILLS: Science & Technology, Technical Design, Visual & Sound Design, Storytelling



Engineering: Drop Zone

- Design, build and test a freestanding structure that can withstand impacts from dropped weights.
- Tell a story about a sudden event with dramatic impact. [SKIT]
- Design and create a visible or audible depiction of the story's sudden event.
- Create and present two Team Choice Elements that show off the team's interests, skills, areas of strength, and talents.

SKILLS: Impact Force Research, Technical & Architectural Design, Structural Engineering, Storytelling

Fine Arts: Change of Tune



- Create and present a musical that includes a change in plans. [SKIT]
- Include music and lyrics that enhance the storytelling.
- Create and present a spectacle as part of the musical.
- Design and integrate a set change into the musical.
- Create and present two Team Choice Elements that show off the team's interests, skills, areas of strength, and talents.

SKILLS: Theater Arts, Musical & Lyrical Composition,
Production, Scenic Design

Improvisational: Treasure



- Research different cultures and famous explorers.
- Create and present an *improvisational skit* about a quest to return a lost cultural treasure to its owner.
- Integrate two explorers and a prop into the quest.
- Show how characters work together to overcome a setback

SKILLS: Cultural Competency, Improvisational Theater, Character Development, Storytelling



Service Learning: Inside Impact

- Identify, design, carry out, and evaluate a project that addresses a need in a real community.
- Create a live presentation that highlights the project and the impact it made on the community.

[SKIT]

- Create infographics that include information about the project.
- Create a storage device that transforms as the story of the project unfolds.
- Create and present two Team Choice Elements that show off the team's interests & skills.

SKILLS: Social Entrepreneurship, Graphic Art Design, Theatrical Set & Prop Design, Storytelling

All Teams: Instant Challenge (IC)



IC require teams to engage in quick, creative and critical thinking.

- **At a tournament, a team will receive an IC and the materials with which to solve it.**
- **The team members must think on their feet by applying appropriate skills to produce a solution in a period of just 5-8 minutes.**
- **ICs are: performance-based, task-based, or both**

Although each IC has different requirements, all Instant Challenges reward teams for their teamwork.

Instant Challenges are kept confidential until the day of the tournament and then teams must keep it until after World Championships.

Southeast 6 and Willis DI Need You!





**ATTN Families & Teachers:
Southeast 6 & Willis DI Needs
Volunteers to serve as Assistant
Team Managers, Skills-Mentors,
and other roles!**

Texas DI Team Managers Need Parent Support

- SNACKS!
- Errands
- Field Trips
- SNACKS!
- Transporting Props
- Storing Props
- SNACKS!



**Southeast 6 DI
Needs
Volunteers for
Tournament
Staff.**



Southeast 6 DI Needs Volunteers to serve as Appraisers.



Let Your Journey Begin Today!



Contact Amy Rogers
Advanced Academics Coordinator/ Willis DI
arogers@willisd.org

Willis DI Needs You!



SOUTHEAST 6 REGION



Willis ISD DI Procedures & Policies

- Application Process - Online on DI Webpage, **due by 08/30 - NO LATE APPS**
 - You will need **Willis ISD login and password** (see campus iCoach for assistance)*
- Number of teams determined by number of campus team managers
- Commitment
 - Practices, Parent/Family Support, Tournament Participation (February 17, 2018)