



Minneota Public School District District Procedures

Adopted: July 2024

DISTRICT PROCEDURES: ACADEMIC ELIGIBILITY

I. PURPOSE

These procedures are meant to consistently track students and monitor their academic progress. These procedures will provide checkpoints every three weeks for our students and will enable support systems to support students more quickly. These procedures will feature improved teacher/student communication, teacher/parent communication, school district/parent communication, and school district/coach/adviser communication.

II. GENERAL STATEMENT OF PROCEDURES

Procedures governing student eligibility follow guidelines of the Minnesota High School League and ISD #414. Students being declared ineligible via MSHSL violation will not be allowed to be in a leadership position at Minneota High School for one calendar year (Homecoming Court, Student Council, NHS, etc.). Students being declared academically ineligible will not be in a leadership position during their ineligibility but can participate after the most recent grade check.

II. ACADEMIC INELIGIBILITY

A student may be declared academically ineligible for the following two scenarios:

- A. A student reported as receiving a failing grade in any class at the end of any academic quarter or grade check and is deemed ineligible per the academic eligibility procedure, is not eligible for participation in extra-curricular activities. Grade checks to determine academic eligibility reinstatement will occur approximately every three weeks. Teachers turn in grades approximately every three weeks, and students are either eligible or ineligible that day, except at the end of a quarter, when the quarter grades will be used. Students who were previously ineligible may have their eligibility reinstated only if the student is not failing any class at the determined grade check. Specific grade checks and quarter ending dates will be shared with students at the start of the year, for each academic quarter.
- B. Students who were not previously academically ineligible must have passing grades for all classes at each three-week grade check. If a student who was not previously ineligible has a failing grade at this grade check, they have one week (grace period) to get all grades to passing to avoid being placed on the academic

ineligibility list. Students who do not get all grades to passing are declared academically ineligible. There is no one-week period to get grades to passing upon the completion of a quarter.

- C. Any student who is deemed ineligible for any reason is not allowed to travel with the team to any away games/contests and is not allowed to be on sidelines/bench/dugout/etc. for all games/contests. Students are allowed to watch games/contests from the stands with the other fans.

III. STUDENTS WITH DISABILITIES

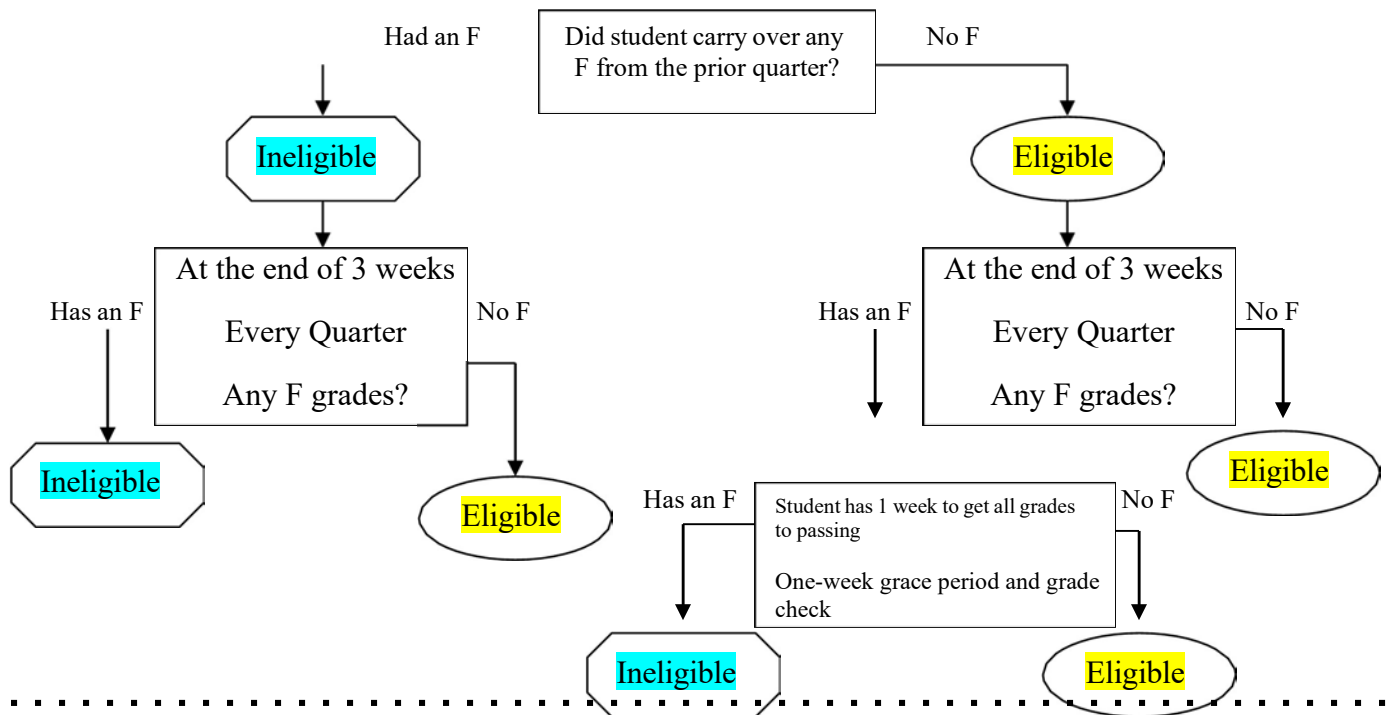
Students who have disabilities and/or are on an IEP or 504 will not be discriminated against academically at any time. Should a student feel like their IEP or 504 plan is not properly being followed should file a complaint with the building principal. Teachers are expected to uphold all IEP and 504 plans; this includes making proper modifications/accommodations as described in the individual plans.

IV. GRADE CHECK SCHEDULE

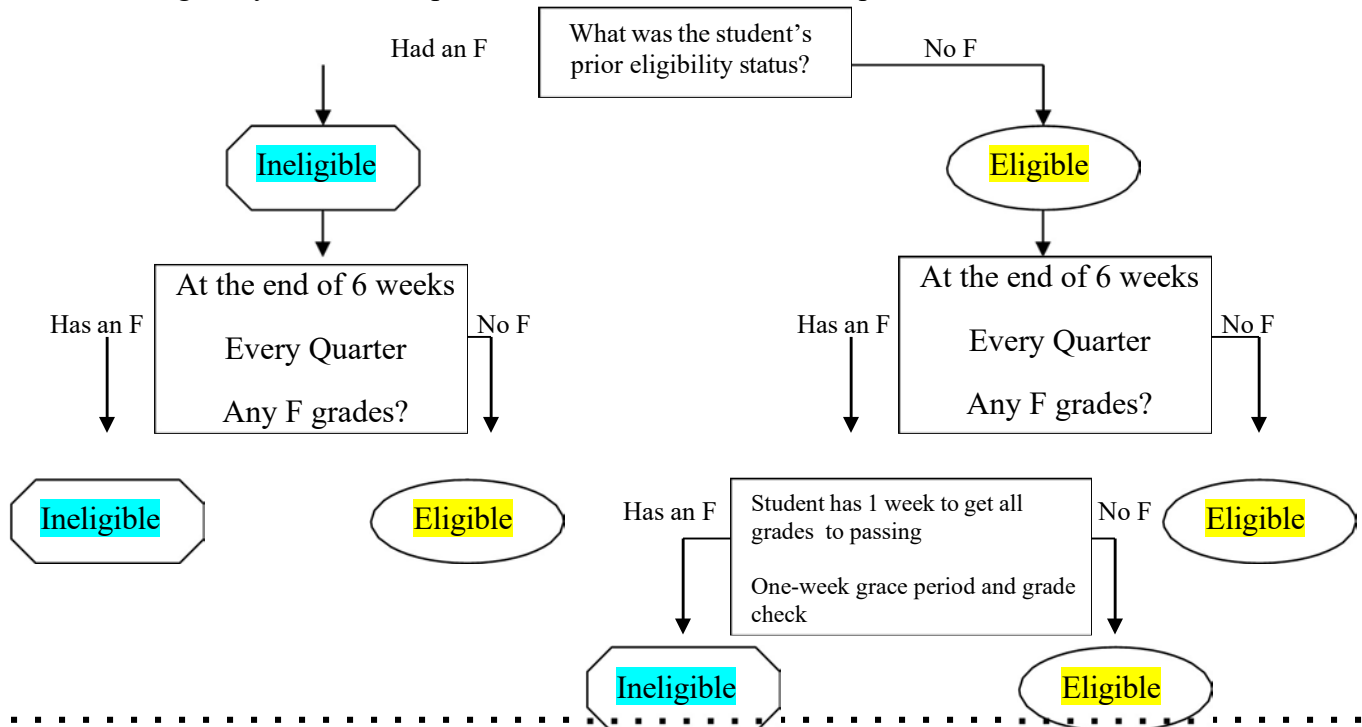
The attached flow chart will be followed for the implementation of grade checks.

Minnesota High School Academic Eligibility Procedures

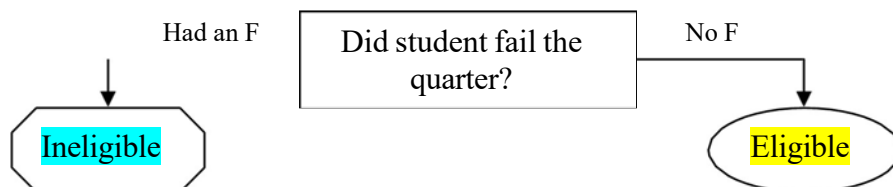
*Academic Eligibility verification procedure to use for the beginning of a Quarter until week 3 of a Quarter.



*Academic Eligibility verification procedure to use for week 6 of a quarter.



*Academic Eligibility verification procedure to use for the end of Quarter.



Students with disabilities will not be discriminated against. All IEP's are to be followed by the teachers/district