

### Pick a Word

Use the word or words in the box that best matches each statement below.

blowout	financial responsibility law
brake fade	grade
deductible	premium

- |       |  |
|-------|--|
| _____ | 1. Specified amount you pay to an insurance company for insurance                                |
| _____ | 2. A sudden loss of air pressure in a tire   |
| _____ | 3. Loss of brake effectiveness due to overheating  |
| _____ | 4. Set amount of money you personally pay for damages that is not paid by your insurance company |
| _____ | 5. The slope of a road surface   |
| _____ | 6. Requires you to prove that you can pay for damages you may cause with your vehicle            |

### Test Your Knowledge

Check correct or incorrect for each situation. If the statement is incorrect, write the word or words that make the statement correct.

	Correct	Incorrect		Correction
1.			1. If your brakes overheat, tap the brakes lightly.	_____
2.			2. Underinflation is a major cause of tire wear.	_____
3.			3. Handle a rear tire blowout like a skid.	_____
4.			4. The faster a driver travels and the shorter the distance to an obstacle, the more time the driver will have to respond.	_____
5.			5. If the engine overheats, turn on the heater.	_____
6.			6. If the headlights fail, use turn signals, parking lights, or hazard lights to see.	_____
7.			7. If there is a fire in the engine, use water to put it out.	_____
8.			8. If a front wheel leaves the roadway, use targeting and reference points to aid recovery.	_____
9.			9. If the engine stops suddenly, turn on the headlights.	_____
10.			10. If you enter a curve too fast, brake hard.	_____

**Choose the Action**

Write the letter for the action you should execute in the emergency.

**Emergency**

- \_\_\_\_\_ 1. Head-on collision threat
- \_\_\_\_\_ 2. Large object in the roadway close ahead
- \_\_\_\_\_ 3. Flooded engine
- \_\_\_\_\_ 4. Total steering failure
- \_\_\_\_\_ 5. Side-impact collision threat
- \_\_\_\_\_ 6. Total brake failure
- \_\_\_\_\_ 7. Rear-end collision threat
- \_\_\_\_\_ 8. A left-front tire blowout occurs
- \_\_\_\_\_ 9. Vehicle stalled on railroad tracks, unable to restart engine
- \_\_\_\_\_ 10. Power brakes fail

**Action**

- A.** Steer firmly to the right.
- B.** Push the brake pedal harder.
- C.** Hold accelerator pedal to the floor, turn ignition on for five seconds.
- D.** Use the parking brake with on-off action to slow down.
- E.** Break or accelerate quickly.
- F.** Downshift to slow.
- G.** Swerve sharply.
- H.** Brake hard, steer right.
- I.** Move to an open front zone.
- J.** All passengers leave the vehicle.

**Number the Steps**

In the picture below, a collision has resulted in injury and damage. Number the following steps in the correct order.



- \_\_\_\_\_ Exchange information with others involved.
- \_\_\_\_\_ Aid the injured.
- \_\_\_\_\_ Pull off the roadway and stop.
- \_\_\_\_\_ Send for the police.
- \_\_\_\_\_ Prevent further damage.

### Choose the Factor

Read the factors below. Check if each factor causes higher or lower insurance premiums.

1. Driver has not been convicted of any moving violations.
2. Principal driver is under 25 years of age.
3. Vehicle will be driven for a great number of miles.
4. Driver is married.
5. Driver has a “B” average or better in academic work.
6. Driver owns a sport utility vehicle.
7. Driver has frequent claims filed against the insurance company.
8. Vehicle has deductibles on collision and comprehensive coverage.

	Lower	Higher
1.		
2.		
3.		
4.		
5.		
6.		
7.		
8.		

### Use the Pictures

Study the pictures, and then number the steps in the correct order for an off-road recovery.



- \_\_\_\_\_ Countersteer sharply when the tire touches the roadway.
- \_\_\_\_\_ Hold the steering wheel on the top half with both hands.
- \_\_\_\_\_ Check traffic for a safe gap.
- \_\_\_\_\_ Aim toward the target.
- \_\_\_\_\_ Reduce speed to 5–10 mph.
- \_\_\_\_\_ Return to lane position 1.
- \_\_\_\_\_ Select a safe area to return to the roadway.
- \_\_\_\_\_ Steer sharply toward the roadway.

Copyright © Pearson Education, Inc., or its affiliates. All rights reserved.

### Test Your Knowledge

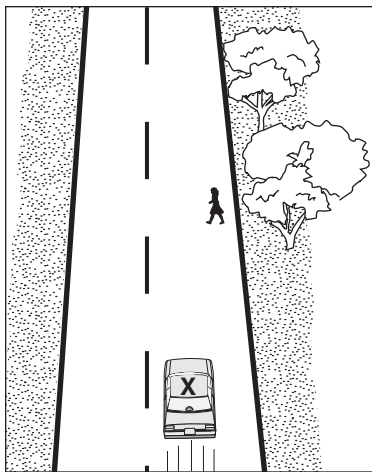
Check true or false for each statement below.

1. Driving is still possible after the accelerator spring breaks.
2. If the hood flies up, look through the crack below the open hood.
3. At speeds over 30 mph, swerving takes more distance than braking.
4. Driving quickly through potholes reduces damage to tires.
5. If a vehicle is totally submerged under water, pressure will equalize allowing doors to be opened.
6. To minimize the effects of a collision, use changes in speed or direction to reduce the impact.
7. If a vehicle crosses over the center line into your path of travel, steer left.
8. Tires wear more quickly when drivers brake abruptly and steer sharply.
9. After a collision, you are not required to show proof of financial responsibility.
10. A compact spare tire can be used for a limited number of miles.

	True	False
1.		
2.		
3.		
4.		
5.		
6.		
7.		
8.		
9.		
10.		

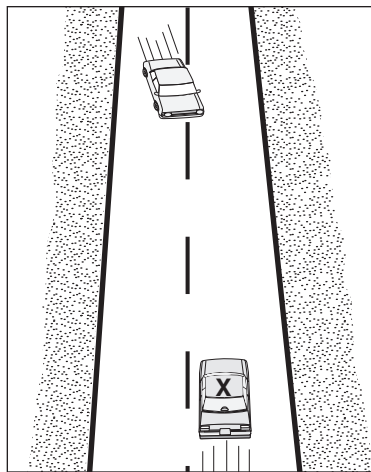
### Use the Diagrams

You are the driver of vehicle X in each picture below. Below each picture, write what emergency action or actions you would take.



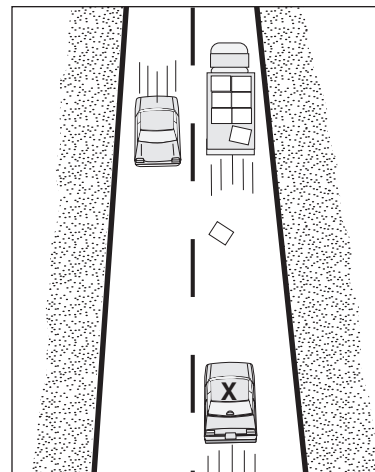
1. Action: \_\_\_\_\_

\_\_\_\_\_



2. Action: \_\_\_\_\_

\_\_\_\_\_



3. Action: \_\_\_\_\_

\_\_\_\_\_