

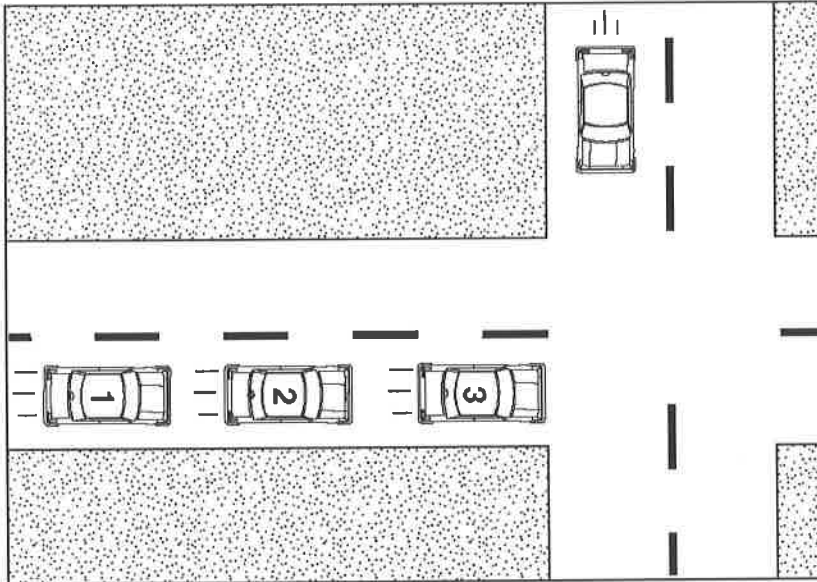
Negotiating Intersections

Multiple Choice

Identify the choice that best completes the statement or answers the question.

1. When an emergency vehicle sounds its sirens or uses a flashing light, you
 - a. must yield the right of way.
 - b. should turn on your emergency flashers.
 - c. should yield only if the vehicle is in your lane.
 - d. may proceed without stopping.
2. A railroad crossing is indicated by a
 - a. white, rectangular sign.
 - b. red, octagon sign.
 - c. yellow, triangular sign.
 - d. white, X-shaped sign.
3. Two kinds of signs are used to control intersections. They are the
 - a. STOP sign and the lane-ends sign.
 - b. YIELD sign and the no-parking sign.
 - c. signal-ahead sign and the street-name sign.
 - d. STOP sign and the YIELD sign.
4. Generally, uncontrolled intersections are found in
 - a. rural areas with highways.
 - b. busy suburban areas.
 - c. residential areas.
 - d. areas that have truck traffic.
5. Traffic is moving at 30 mph on a street you plan to cross. How large a gap in each direction should you have?
 - a. about two-thirds of a block
 - b. about one-quarter of a block
 - c. about one-half of a block
 - d. about one block
6. When turning right and joining traffic, the faster traffic is moving, the
 - a. less space you need.
 - b. greater the time you have available.
 - c. larger the gap must be.
 - d. smaller the gap must be.

7. When you are near an uncontrolled intersection at location 2 shown in the diagram, which way should you look first?



- a. in the rearview mirror
 b. straight ahead
 c. to the left
 d. to the right
8. Once in an intersection,
 a. you may make any lane changes you desire.
 b. you must be in the center lane to turn.
 c. you can change your mind about turning.
 d. you may not make any lane changes.
9. The sign for an uncontrolled railroad crossing is a
 a. round, yellow sign.
 b. rectangular, yellow sign.
 c. rectangular, white sign.
 d. triangular, yellow sign.
10. You are approaching an intersection that has traffic signals. The intersection is
 a. unprotected.
 b. controlled.
 c. reserved.
 d. unreserved.
11. Yielding the right of way means
 a. always stopping at YIELD signs.
 b. letting others go first.
 c. others will not stop for you.
 d. traffic signs stop traffic for you.
12. You allow others to go first when you
 a. stop.
 b. check your zones.
 c. turn right.
 d. yield.
13. Which clue or clues help you to identify an intersection ahead?
 a. a broken white line
 b. an orange traffic sign
 c. an approaching vehicle
 d. street signs and street lights
14. A through street is created when STOP or YIELD signs are
 a. on two corners of the intersecting street.
 b. above the center of the intersection.
 c. on four corners of the intersection.
 d. on three corners of the intersecting street.
15. When turning, your last check is
 a. over your right shoulder.
 b. behind you.
 c. in the direction of your intended path of travel.
 d. for a controlled zone.

16. An intersection with a YIELD sign is
 - a. a controlled intersection.
 - b. a registered intersection.
 - c. an unregistered intersection.
 - d. an uncontrolled intersection.
17. Joining traffic when turning right takes
 - a. the same gap as crossing the intersection.
 - b. about the same gap as for turning left.
 - c. a larger gap than crossing the intersection.
 - d. a gap about two blocks long.
18. Turning right on red after stopping is permitted
 - a. only during daylight hours.
 - b. except when entering a one-way street.
 - c. unless a sign prohibits it.
 - d. at all intersections.
19. Turning right and accelerating to 30 mph takes about
 - a. 2 seconds.
 - b. 12 seconds.
 - c. 4 seconds.
 - d. 6 seconds.
20. You must yield the right of way
 - a. from dusk to daylight hours.
 - b. on the expressway.
 - c. when a police officer waves you ahead.
 - d. at a STOP sign.
21. A light that has just turned green is
 - a. a fresh green light.
 - b. a stale green light.
 - c. a used green light.
 - d. brighter than normal.
22. You have the right of way at an intersection
 - a. any time you have a two-second gap.
 - b. when the signal light is flashing.
 - c. only when other drivers give it to you.
 - d. if there is no police officer present.
23. If two vehicles approach an uncontrolled intersection at about the same time, who must yield?
 - a. The driver on the right yields to the driver on the left.
 - b. The driver on the left yields when turning.
 - c. The driver on the left yields to the driver on the right.
 - d. The driver on the right yields when turning.
24. When following a bus across a railroad crossing, you should
 - a. increase speed and pass.
 - b. be prepared for it to stop.
 - c. look 12 seconds ahead.
 - d. yield the right of way to the train.
25. When you cross a through street from a STOP sign, you must judge the size of the
 - a. gap in the traffic behind you.
 - b. gap in the traffic from the left.
 - c. gap in the traffic from the right.
 - d. gaps in the traffic from each direction.