



Product Name: CHOCOLATE ÉCLAIR BAR  
DATE: 4/29/2014 mlf

NUTRITION FACTS  
Per Serving

Serving Size: 1 BAR ( 70 g)  
Servings per container: 1

Amount Per Serving

Calories:	140	Calories from fat:	40
		% Daily Value *	
Total Fat:	4 g		6%
Saturated fat:	1.5 g		9%
Trans Fat:	0 g		
Cholesterol:	<5 mg		1%
Sodium:	60 mg		3%
Carbohydrates:	23 g		8%
Dietary fiber:	0 g		0%
Sugars:	21 g		
Protein:	2 g		

Percentage of U.S. Recommended Daily Intakes (US RDI):

Vitamin A:	0	Vitamin C:	0
Calcium:	6	Iron:	0

\*Percent Daily Values are based on a 2,000 calorie diet. Your daily values may be higher or lower depending on your calorie needs.

**Ingredients:** **Frozen Dairy Dessert:** Nonfat milk and milkfat, corn syrup, sugar, whey, maltodextrin, mono- and diglycerides, guar gum, locust bean gum, calcium sulfate, polysorbate 80, natural and artificial flavor, carrageenan, vitamin A palmitate. **Center:** Water, sugar, corn syrup, cocoa processed with alkali, skim milk, whey, mono- and diglycerides, guar gum, locust bean gum, xanthan gum, polysorbate 80, carrageenan, salt. **Coating:** Soybean oil, coconut oil, sugar, cocoa, cocoa processed with alkali, whey powder, soy lecithin, artificial flavor. **Crunch:** Bleached wheat flour, sugar, caramel color, cocoa, baking soda, salt, soy lecithin.  
Contains: Milk, Soy, Wheat.

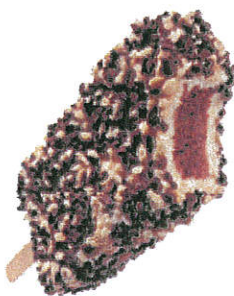
Chocolate Éclair Bar

Vanilla Flavored Low Fat Frozen Dairy Dessert with Chocolate Center and Crunch Coating.  
Artificial Flavor Added

3 Fl Oz (88.7 mL)

Plant Code: 36-2677

Kosher Symbol: Circle U D



40120

**King Size  
Chocolate Éclair  
Ice Cream Bar**

Here's a pastry lover's delight! Our creamy chocolate center is smothered in vanilla ice cream, dipped in a chocolate shell and rolled in a cake crunch for a king-size chocolate éclair taste that will satisfy to the core.

Item #840084  
UPC #70640-00247



Unit Size	Case Pack	Case Dimensions	Case Weight	Case Cube	Cases/Pallet	TIHi
4.0 fl. oz.	1/2 doz.	10.63 x 8.51 x 4.76	4.66	0.248	352	22 x 16

**INGREDIENTS:** ICE CREAM: Milk Fat and Nonfat Milk, Buttermilk, Sugar, Whey, Corn Syrup, Mono & Diglycerides, Vanilla Extract, Guar Gum, Cellulose Gum, Carrageenan, Polysorbate 80, Annatto (For Color).

**ALLERGEN INFORMATION:** Contains milk, soy and wheat.

Information about this product can also be found on [FoodProfile.com](http://FoodProfile.com).

## Nutrition Facts

Serving Size 1 Bar (80g)  
Servings Per Container 1

**Amount Per Serving**

**Calories 220**      Calories from Fat 110

**% Daily Values\*\***

<b>Total Fat</b> 12g		<b>18%</b>
Saturated Fat 3.5g		<b>18%</b>
Trans Fat 0.5g		
<b>Cholesterol</b> 15mg		<b>5%</b>
<b>Sodium</b> 100mg		<b>4%</b>
<b>Potassium</b> 80mg		<b>2%</b>
<b>Total Carbohydrate</b> 27g		<b>9%</b>
Dietary Fiber Less than 1g		<b>2%</b>
Sugars 18g		
<b>Protein</b> 2g		<b>5%</b>
Vitamin A	2% • Vitamin C	*
Calcium	6% • Iron	2%
Thiamin	4% • Riboflavin	6%
Vitamin B12	2% • Phosphorus	4%

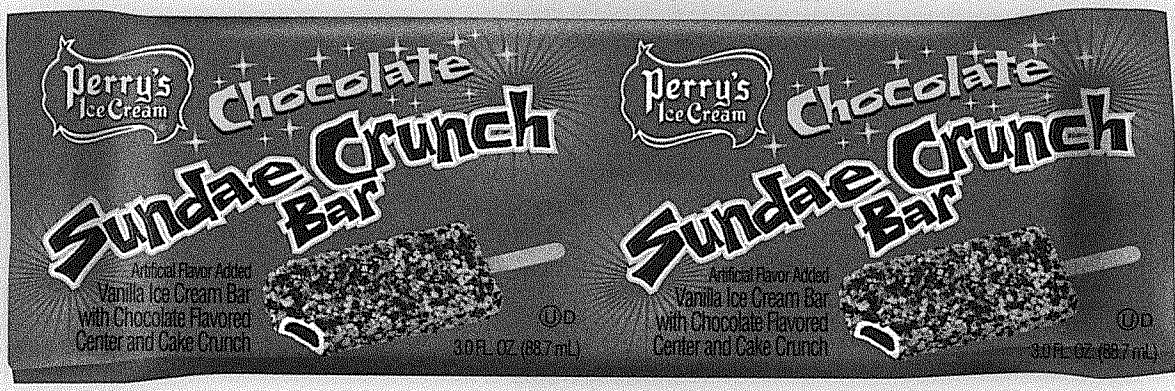
\*Contains less than 2% of these values

\*\*Percent Daily Values are based on a 2,000 calorie diet. Your daily values may be higher or lower depending on your calorie needs:

	Calories:	2,000	2,500
Total Fat	Less than	65g	80g
Saturated Fat	Less than	20g	25g
Cholesterol	Less than	300mg	300mg
Sodium	Less than	2400mg	2400mg
Potassium		3500mg	3500mg
Total Carbohydrate		300g	375g
Dietary Fiber		25g	30g
Protein		50g	65g



# Bulk Novelty



Meets the final rule for competitive foods published by USDA's Food and Nutrition Service for *Nutrition Standards in the National School Lunch and School Breakfast Programs.*

Nutrition Facts		Amount/serving	%DV*	Amount/serving	%DV*
Serving Size: 1 Bar (60g)		<b>Total Fat</b> 5g	<b>8%</b>	<b>Total Carb.</b> 21g	<b>7%</b>
<b>Calories</b> 140		Saturated Fat 1.5g	<b>8%</b>	Dietary Fiber 0g	<b>0%</b>
Fat Cal. 45		Trans Fat 0g		Sugars 15g	
		<b>Cholesterol</b> 0mg	<b>0%</b>	<b>Protein</b> 2g	
		<b>Sodium</b> 90mg	<b>4%</b>		
* Percent Daily Values (DV) are based on a 2,000 calorie diet. Your daily values may be higher or lower depending on your calorie needs.					
Vitamin A: 2% • Vitamin C: 0% • Calcium: 6% • Iron: 0%					

**INGREDIENTS:** SKIM MILK, WATER, LIQUID SUGAR, CRUNCH (BLEACHED WHEAT FLOUR, SUGAR, PALM OIL, CARAMEL COLOR, COCOA, BAKING SODA, SALT, ARTIFICIAL FLAVORS, SOY LECITHIN), CORN SYRUP, CLEAR COATING (SOYBEAN OIL, PALM OIL, COCONUT OIL, SOY LECITHIN, VANILLIN, CITRIC ACID), MALTODEXTRIN, COCOA (PROCESSED WITH ALKALI), WHEY, MONO- AND DIGLYCERIDES, LOCUST BEAN GUM, PROPYLENE GLYCOL MONOESTERS, GUAR GUM, CARRAGEENAN, CELLULOSE GUM, SALT, VANILLA EXTRACT, VITAMIN A PALMITATE.

Chocolate Sundae  
Crunch Bar  
Item #5110



0 75767 05110 7

## Bulk Novelty Product Specs

Size of Package	3.0 FL. OZ. (88.7 mL)	Pallet Configuration	10 cases per layer x 10 layers high.
Packed	24 bars per box; 4 boxes per case		100 cases per pallet; 400 boxes per pallet
Box Dimensions	6.75"H x 4.75"W x 10"L	Case Weight	14 lbs.
Case Dimensions	6.75"H x 10"W x 19"L	Pallet Weight	1,400 lbs.
Case Cube	.74	Please contact Customer Service for product availability. Availability subject to change without notice.	

One Ice Cream Plaza • Akron, NY 14001 • (716) 542.5492 • 800.873.7797 • fax (716) 542.7197 • [www.perrysicecream.com](http://www.perrysicecream.com)

08/14

**LIFE IS A BOWL OF PERRY'S®**

## Smart Snacks Product Calculator Results

Brand:  
**Perry's Ice Cream**

Product Name:  
**Chocolate Sundae Crunch Bar**

Serving Size:  
**60.00 g**

First Ingredient:  
**Skim Milk**

• Your dairy product meets all nutrient standards.

## Nutrition Facts

Serving Size 60.00 g ⓘ

Amount Per Serving

**Calories 140**

**Calories from Fat 45**

**Total Fat (g) 5**

Saturated Fat (g) 1.5

Trans Fat (g) 0

**Sodium (mg) 90**

**Carbohydrates**

Sugars (g) 15

Vitamin D (%) NA

Potassium (%) NA

Calcium (%) NA

Dietary Fiber (%) NA