

Aledo ISD

ATTENDANCE ZONE COMMITTEE



Board Presentation
March 11, 2021

Committee Members

Peter Healey Co-Chair

Lindsey Flowers

Catherine Montenegro

Jeremy Thompson

Cynthia Llewellyn Co-Chair

Jeff Haddox

Jason Niemela

Katey Thompson

Nancy Bathurst

Stacey Hardwick

Laura Pace

Jeff Turner

Claudia Bracero

Khala Hart

Anita Palacios

Whitney Unterwagner

Brandon Brinkman

Cody Hughes

Justin Parker

Frank Urquidez

Luella Bullock

Jennifer Lawler

Wessman Peterson

Aaron Valencia

Jennifer Churion

Cody Lode

Dan Reilley

Carrie Woychesin

Michelle Clary

Amanda Martin

Erica Rubino

Mark Younger

Kelly Dishman

Andrew McCulloch

Lori Saunders

Deanne Younkin

Courtney Edwards

Lauren McMurrey

Joshua Shelman

Purpose

The purpose of the Attendance Zone Committee is to represent the Aledo ISD community in the study of data related to projected student enrollment growth, campus student capacity, safety, transportation, current and planned transportation infrastructure, and geographic location of planned development in the district, in recommending to the Board of Trustees new attendance zones for elementary and middle schools.

Charge

The Attendance Zone Committee is charged by the Board of Trustees to:

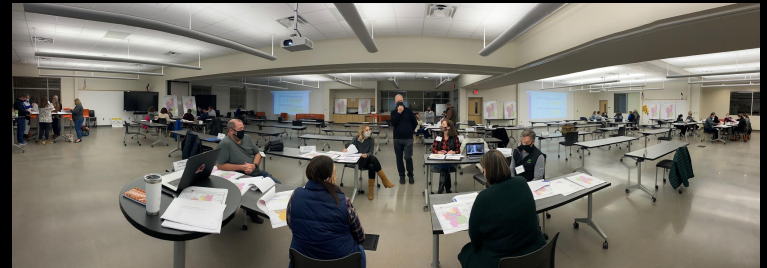
- represent the priorities, expectations, and values of the entire community,
- consider the needs of all of the district's students,
- listen to and consider questions and feedback from all community members and the Board of Trustees,
- use facts and data to make informed decisions,
- recommend attendance zones that are projected to most efficiently use building capacity for the longest time period possible (given projected student growth), and
- recommend to the Board of Trustees an elementary attendance zone map (effective 2021-2022) and a middle school attendance zone map (effective 2022-2023) for approval by the Board and implementation by the Administration.

Committee Guiding Principles

- (from the Board's charge) recommend attendance zones that are projected to most efficiently use building capacity for the longest time period possible (given projected student growth)
- If possible, elementary school boundaries should align with middle school boundaries to create feeder pattern alignment
- Transportation routes should be as efficient as possible, minimizing student ride times (considering both length of route and local traffic patterns)

Process Explanation

- Meeting Dates and Discussion
 - January 26th
 - Reviewed Demographic Report
 - February 2nd
 - Small Group Collaboration with Starting-Point Maps
 - Submitted Feedback and Recommended Adjustments
 - February 9th
 - Reviewed 4 Elementary Maps and 12 Middle School Maps
 - Discussed Until Consensus on Map to Submit to Board/Community
 - March 9th
 - Discussed and analyzed community and Board feedback
 - Made adjustments to elementary map
 - Discussed until consensus was reached on final maps to recommend to the Board for approval



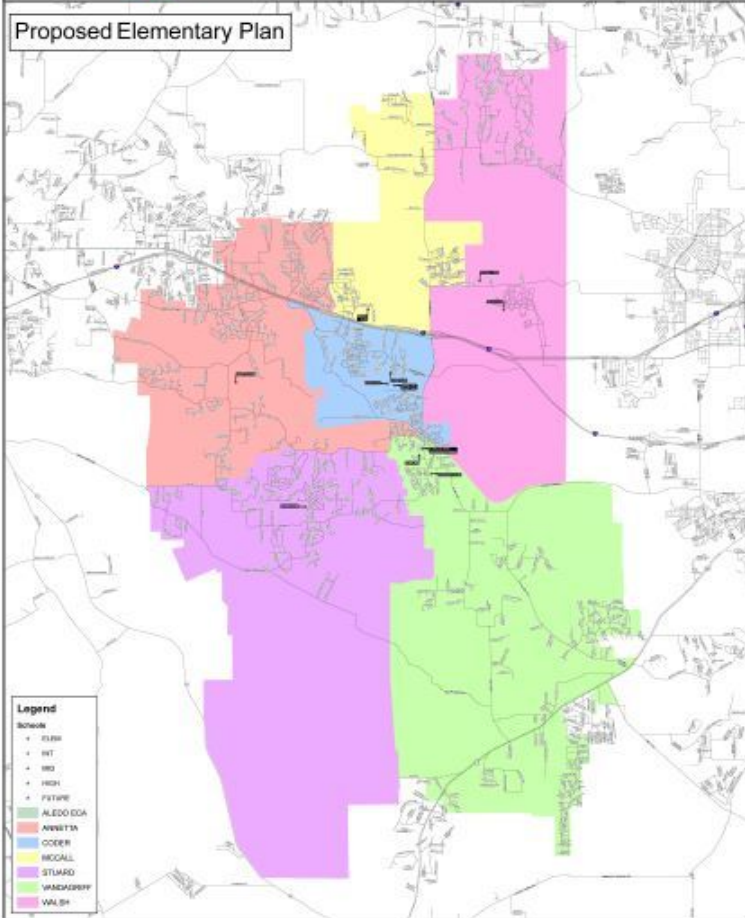
Discussion Highlights

- Transportation
 - Geographic size of Aledo ISD - 132 square miles
 - Size of district equates to significant differences in routes
 - Afternoon routes wait/ride times vary from 30 to 75 minutes
 - Traffic Patterns
 - Center of Aledo
 - Mikus Road
- Clean Feeder Patterns
- General Recognition of Difficulty to Move Schools for Families
- Community Feedback Requests



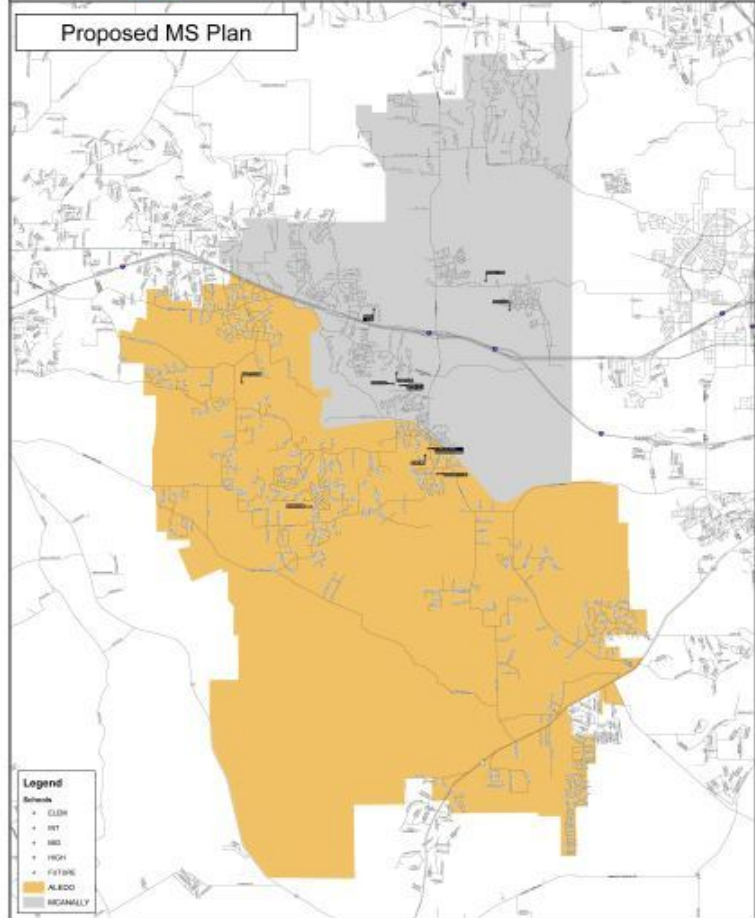
ALEDO INDEPENDENT SCHOOL DISTRICT

Proposed Elementary Plan



ALEDO INDEPENDENT SCHOOL DISTRICT

Proposed MS Plan



Grandfathering Guidelines

2021 ATTENDANCE ZONE COMMITTEE FAQs

[Expand All](#)

Will students be grandfathered into their current school?

Aledo ISD Administration has constructed guidelines for the opportunity for a student who currently attends a campus as a fourth grader (during this 2020-2021 school year) to be “grandfathered” to stay at that campus for his/her fifth grade year during the 2021-2022 school year. If a parent chooses for such an incoming fifth grader to stay on the campus to which he/she is currently assigned, any sibling of that incoming fifth grader may also attend the campus for only one school year (the 2021-2022 school year). If a parent chooses to keep their incoming fifth grader (and any sibling) on their current campus for fifth grade, the parent must provide transportation for their child/ren on that campus.

Click here to view the detailed [Elementary Intra-District Transfer Procedures for Incoming 5th Graders 2021-](#)

[2022](#)

Next Steps

- If Approved:
 - Email Community
 - Release Grandfathering Form
- If Not Approved:
 - Reconvene the AZC

Questions?