

# BSC Presentation

Aledo Independent School District

May 12, 2020

---



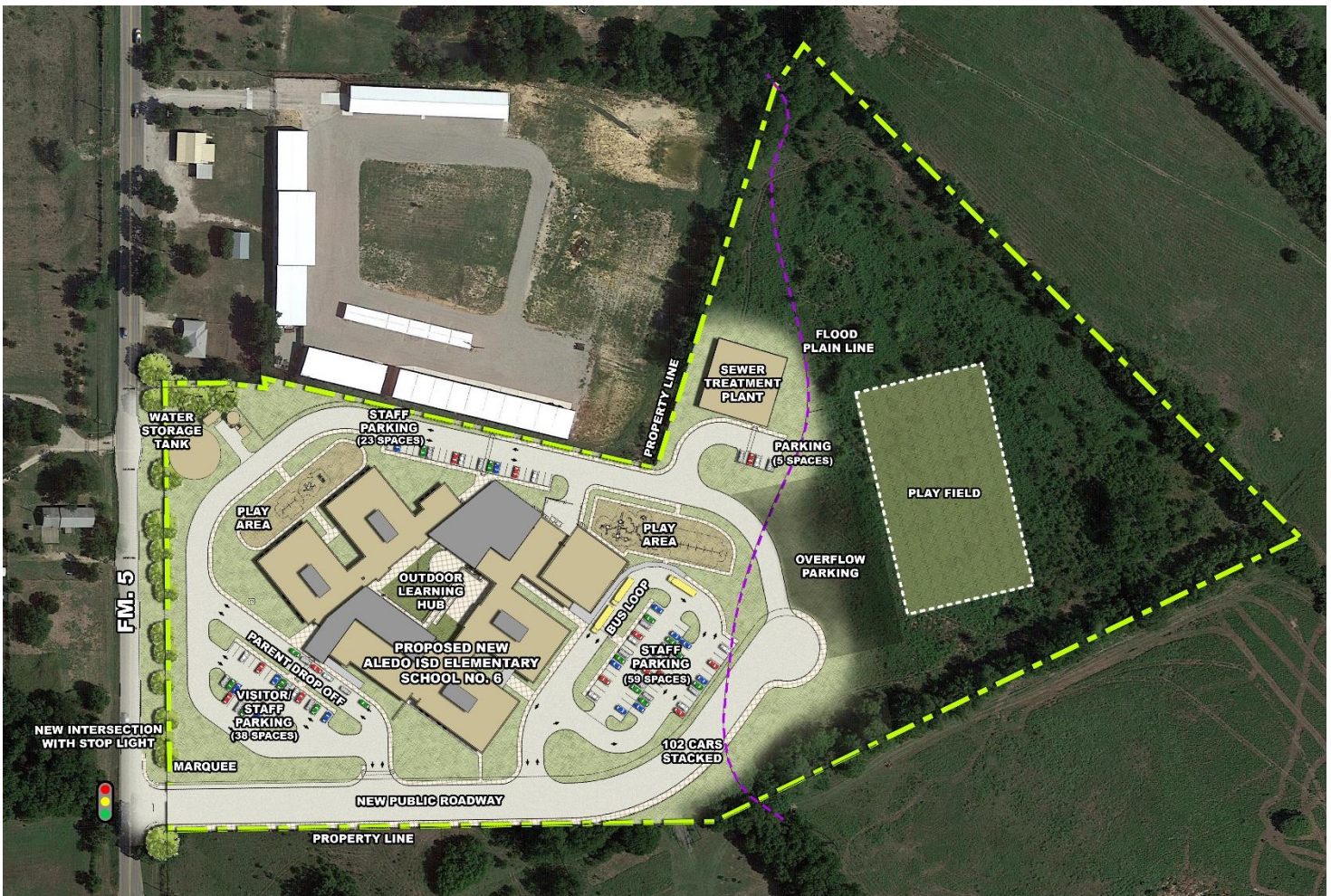
Aledo Elementary School No. 6



# 1

## Current Progress

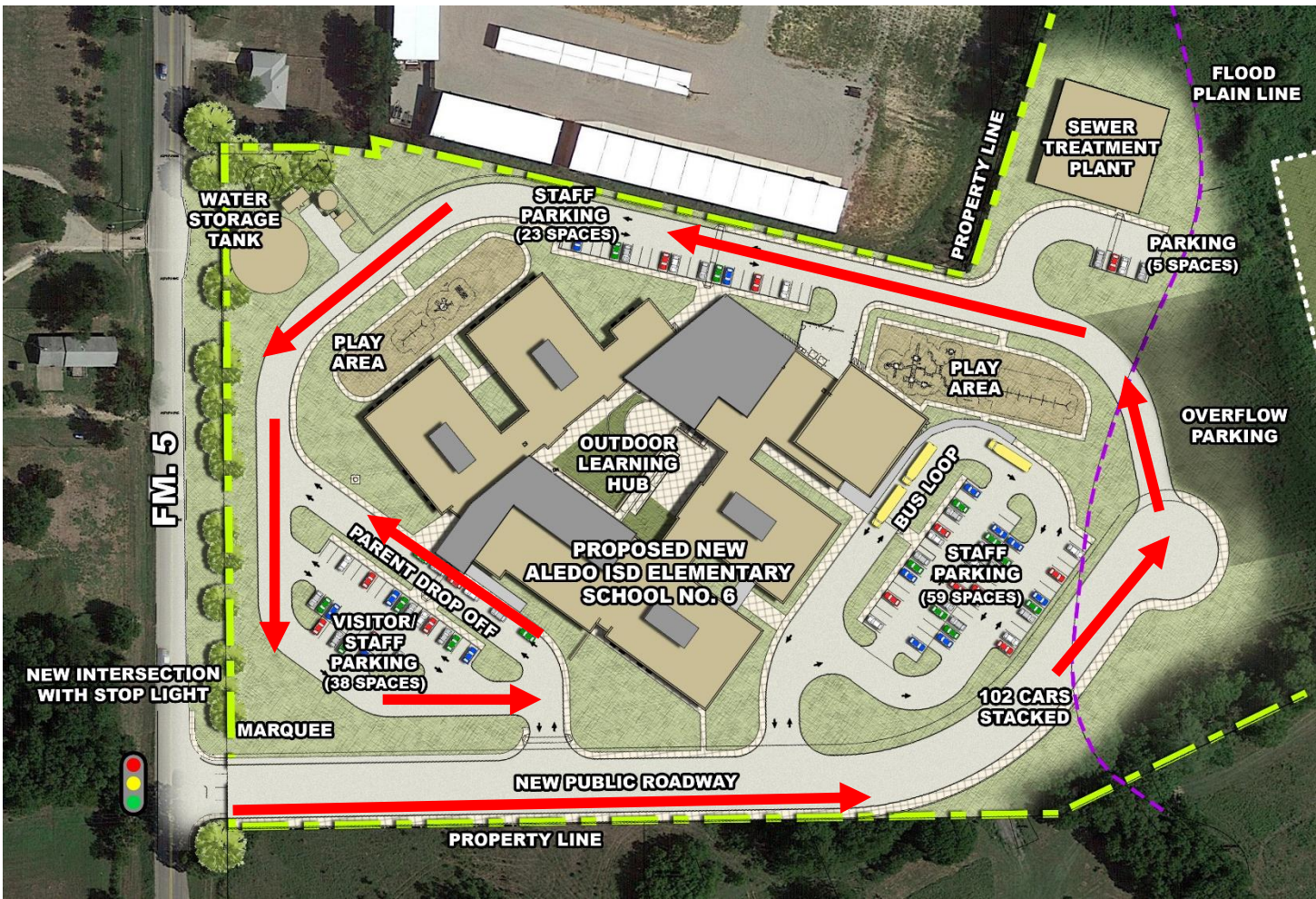




Overall Composite Site Plan



Enlarged Composite Site Plan



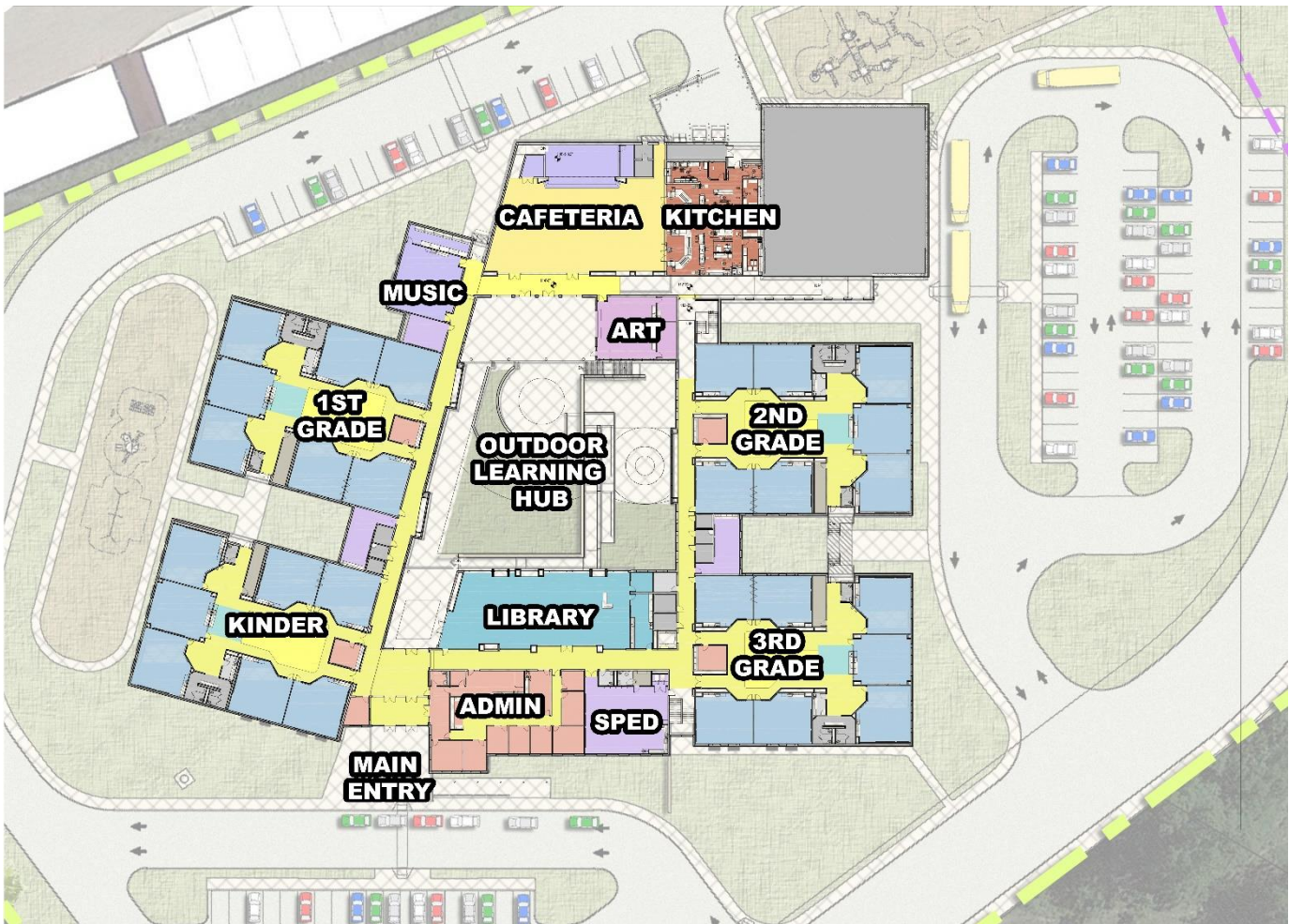
Parent Site Circulation



Bus Circulation

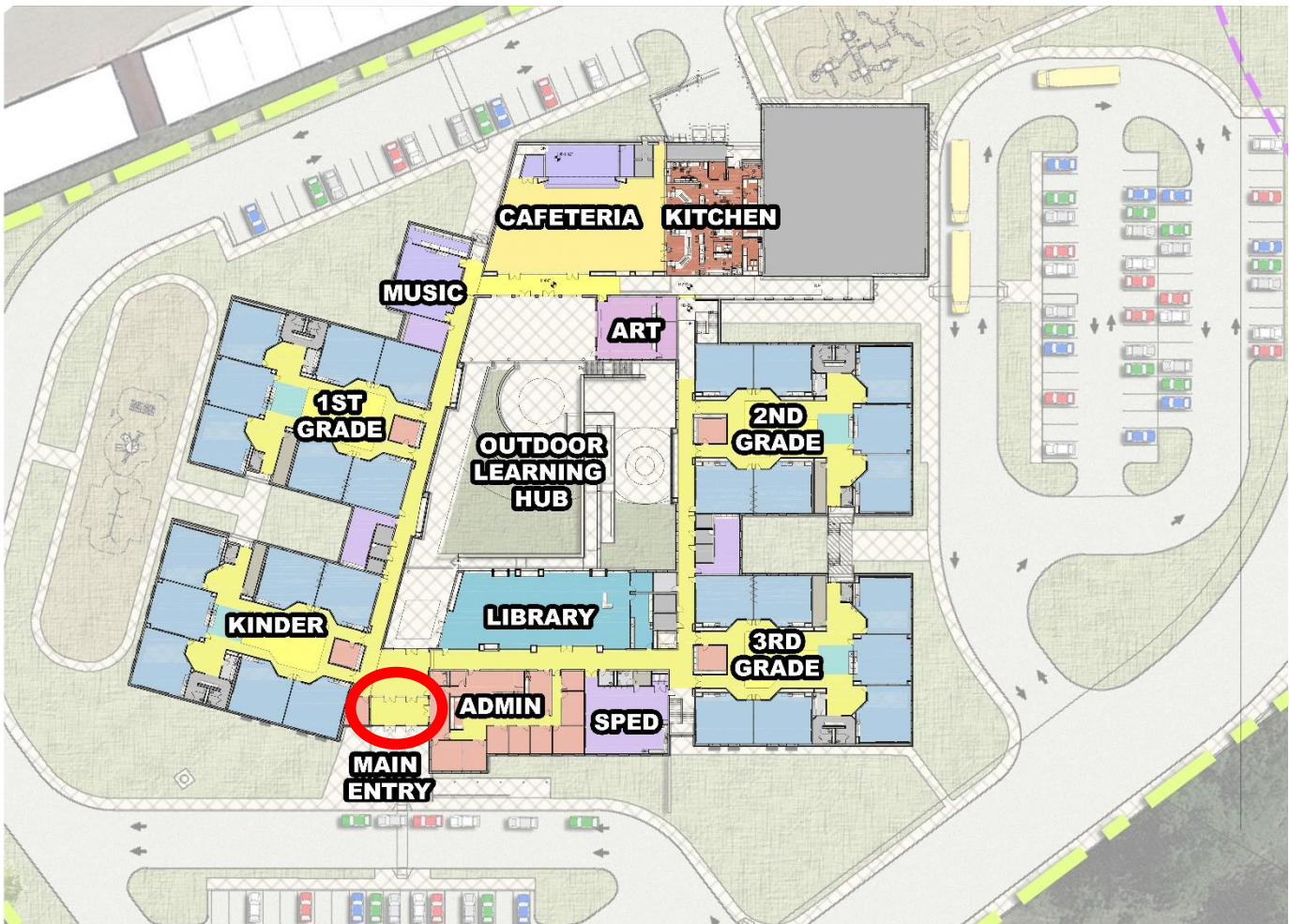


Emergency Vehicular Circulation

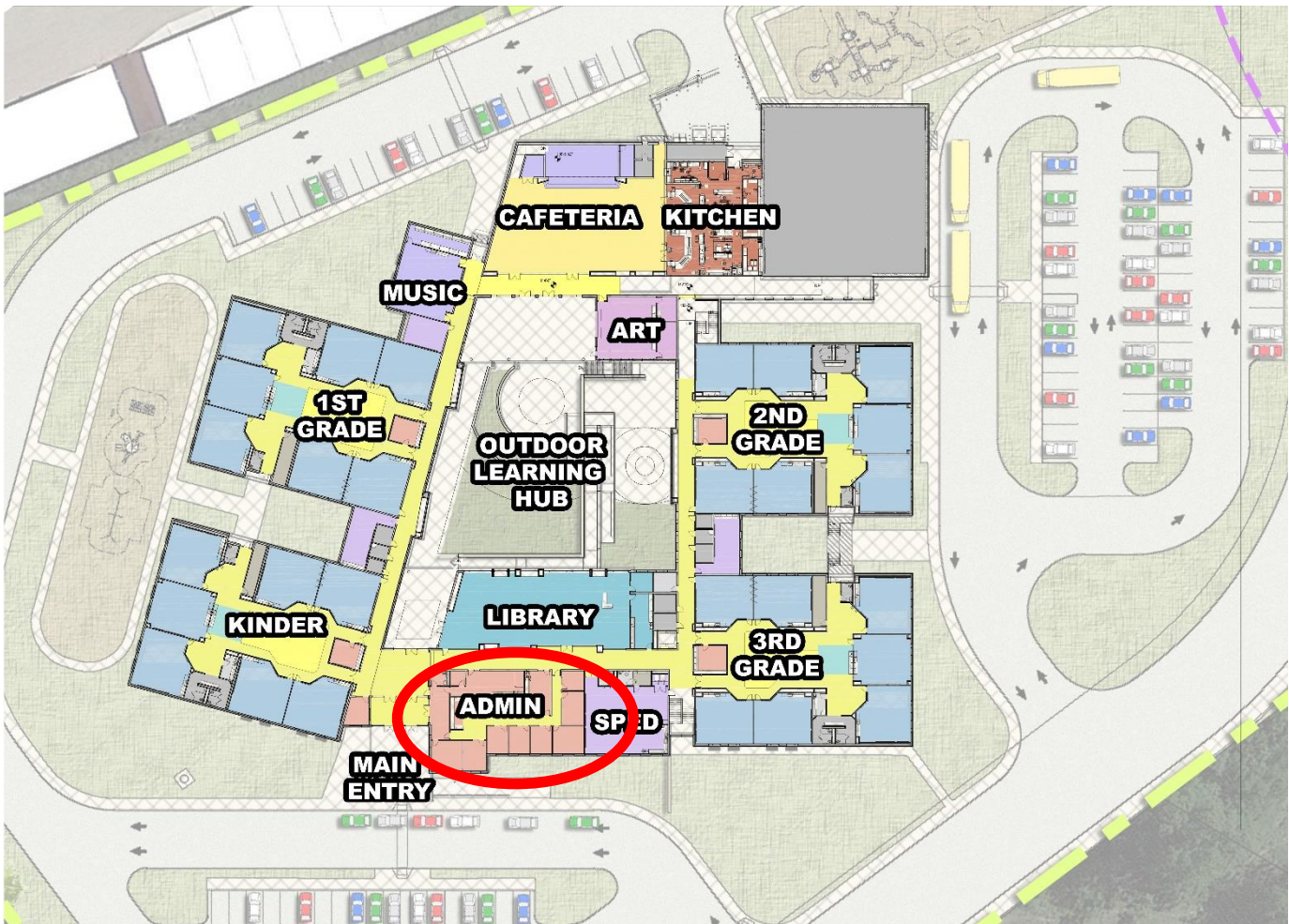


Composite First Level – Floor Plan

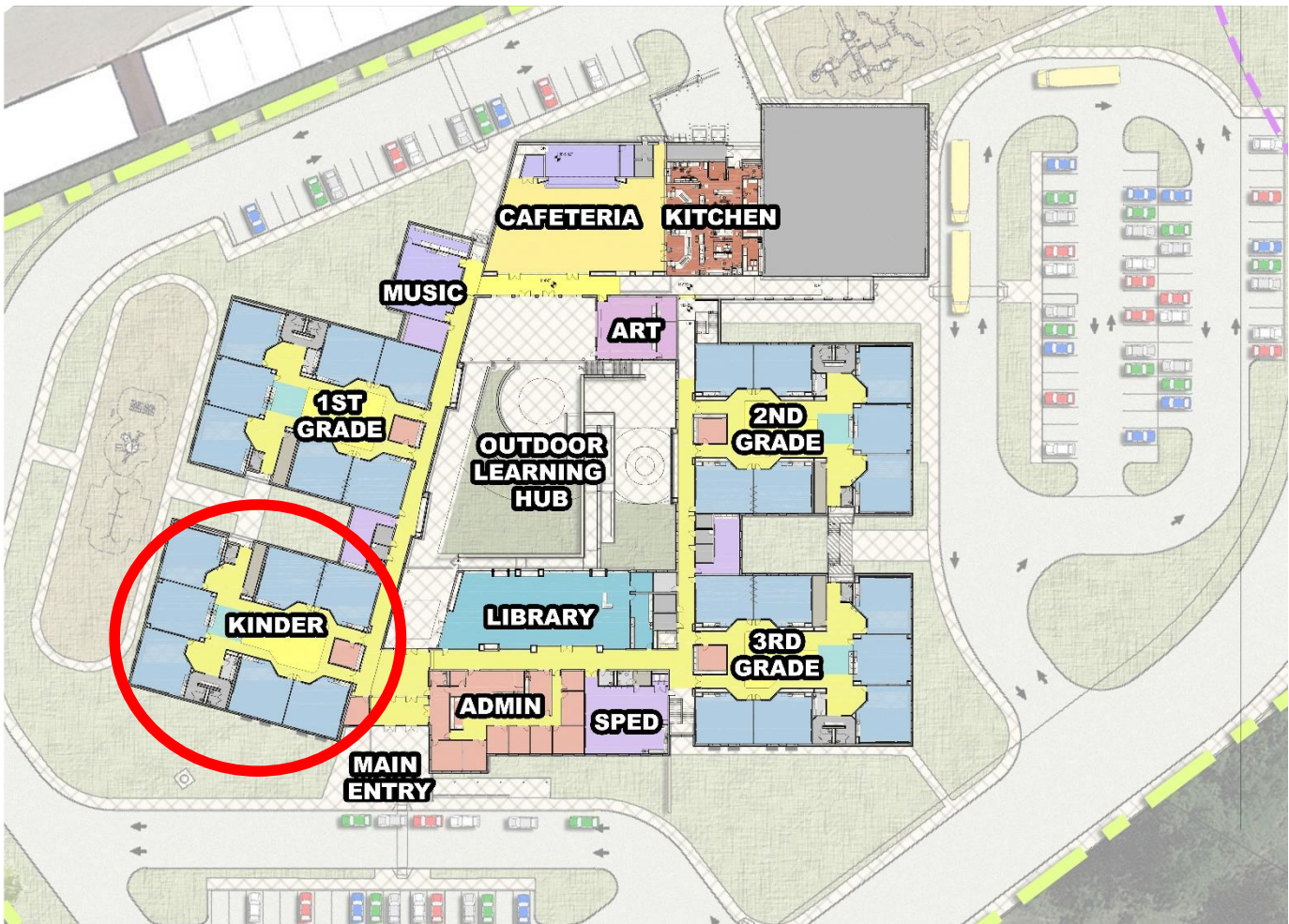




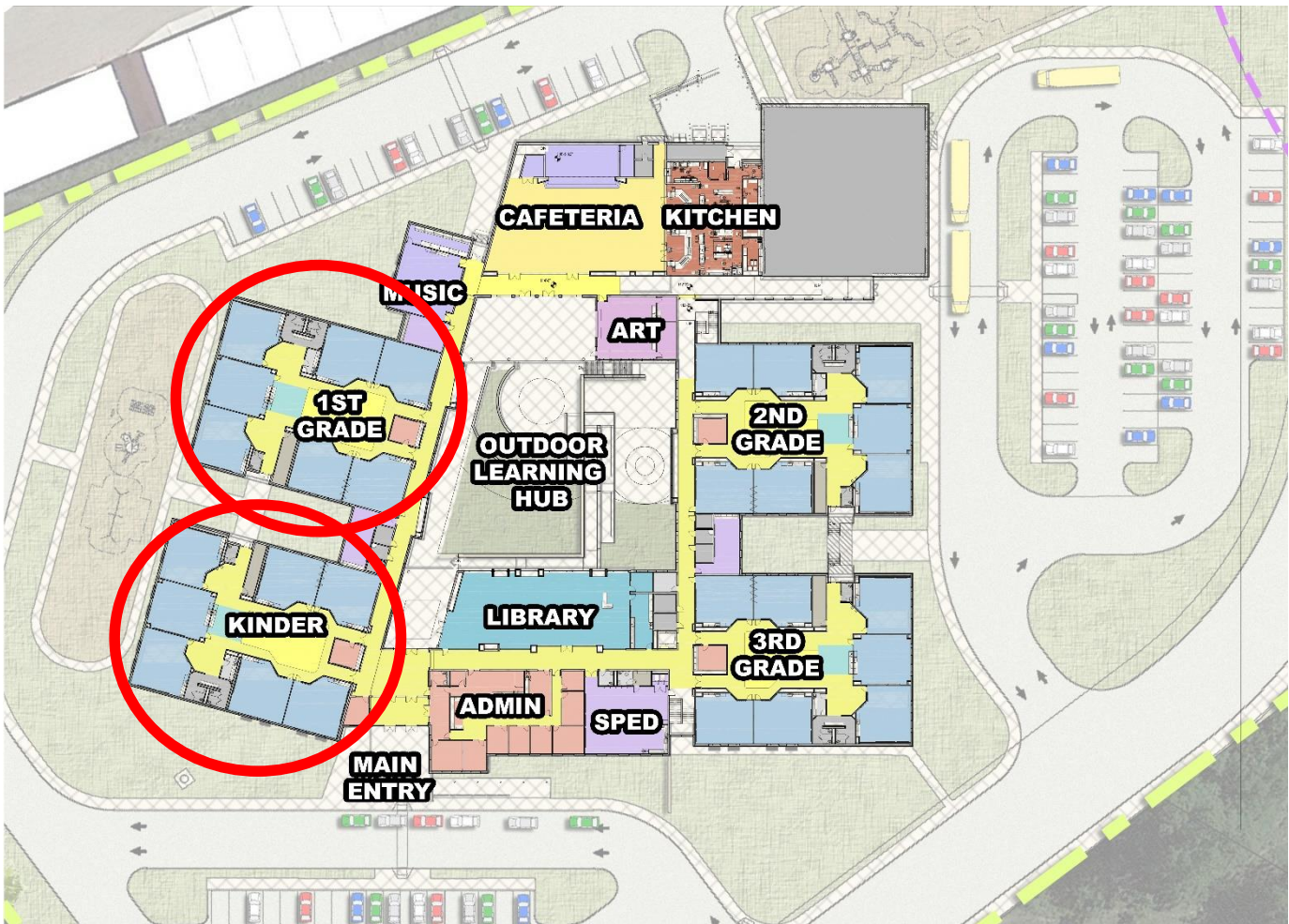
Entry Vestibule



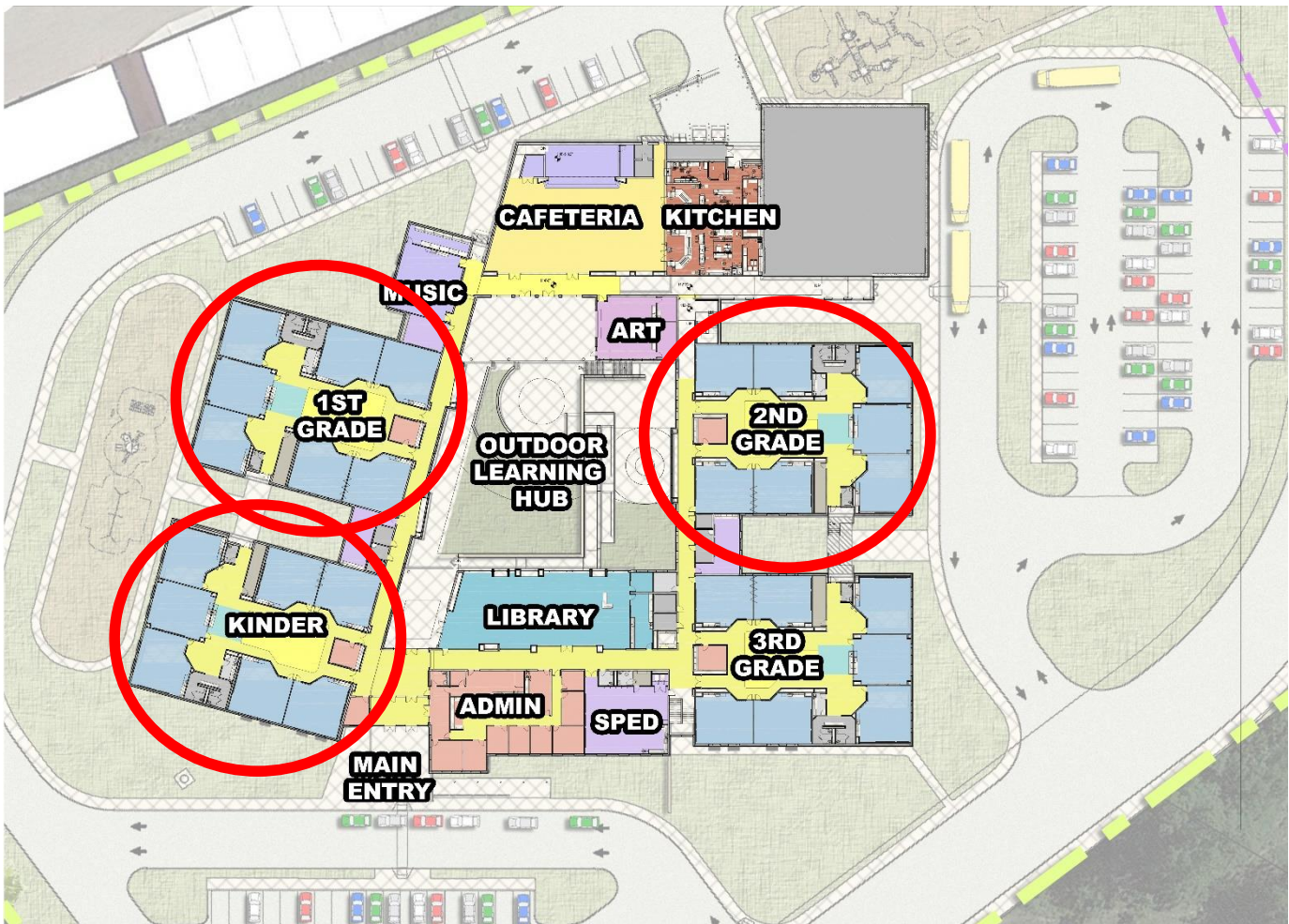
Administration Area



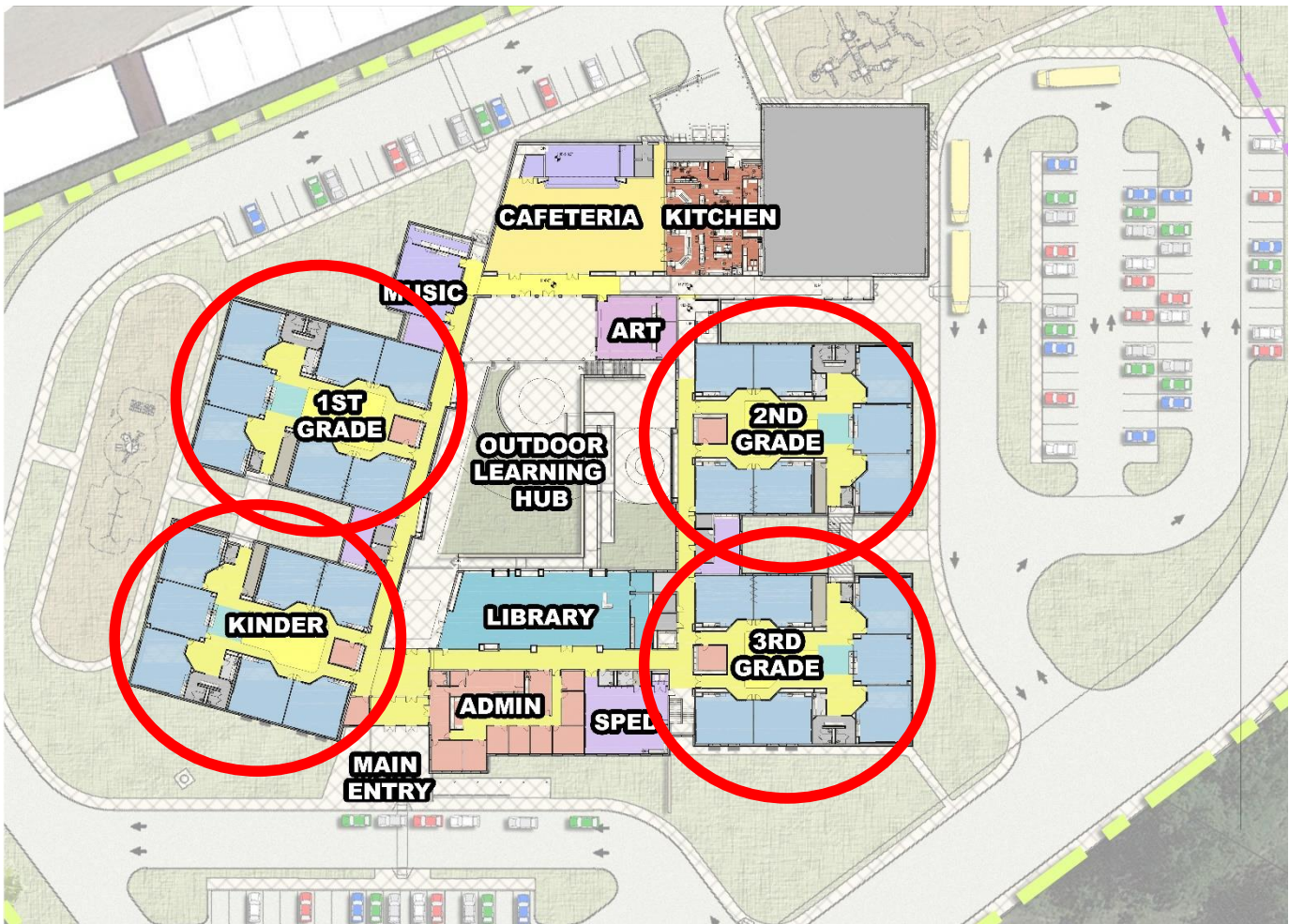
Academic Pod - Kindergarten



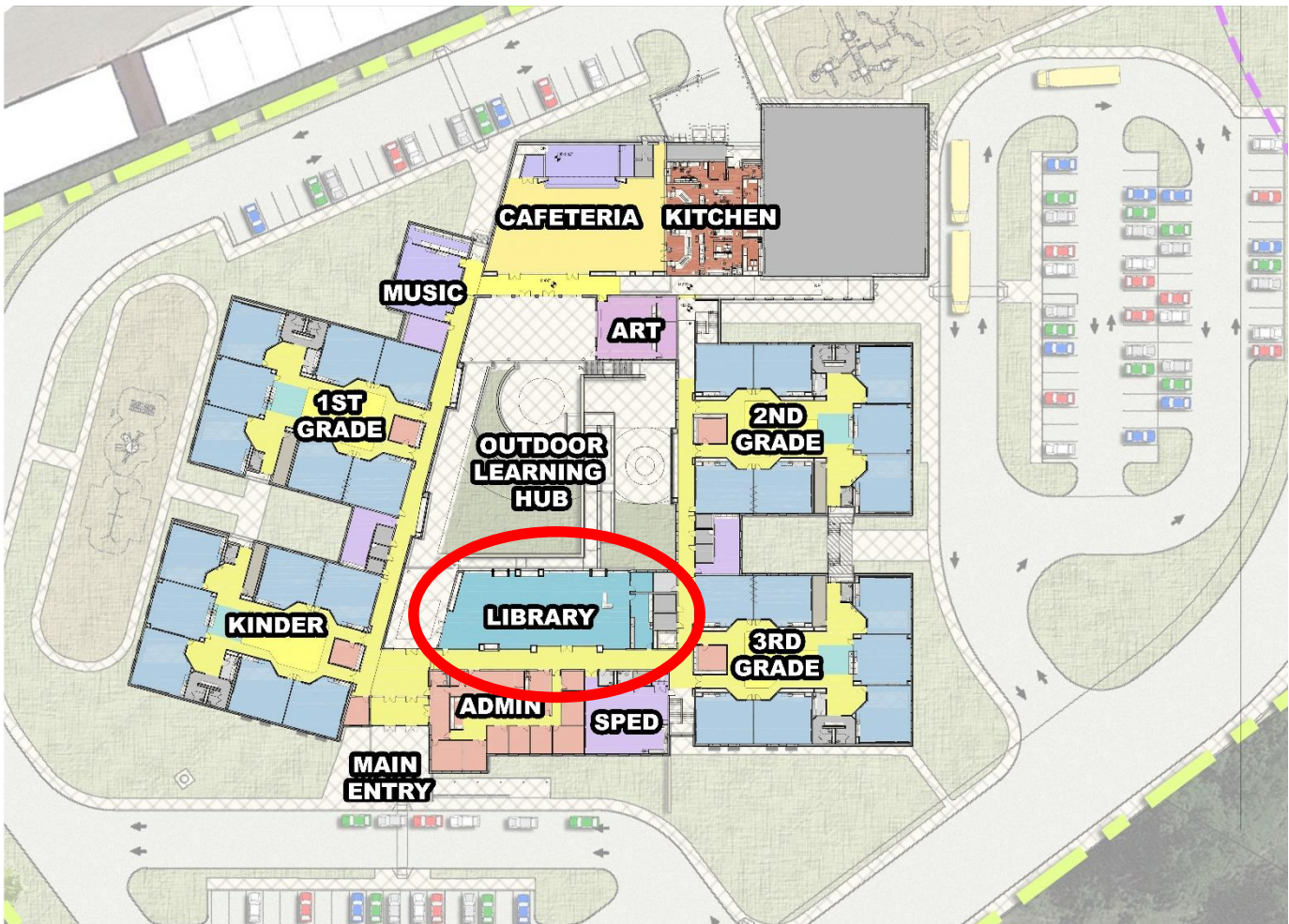
Academic Pod – 1<sup>st</sup> Grade



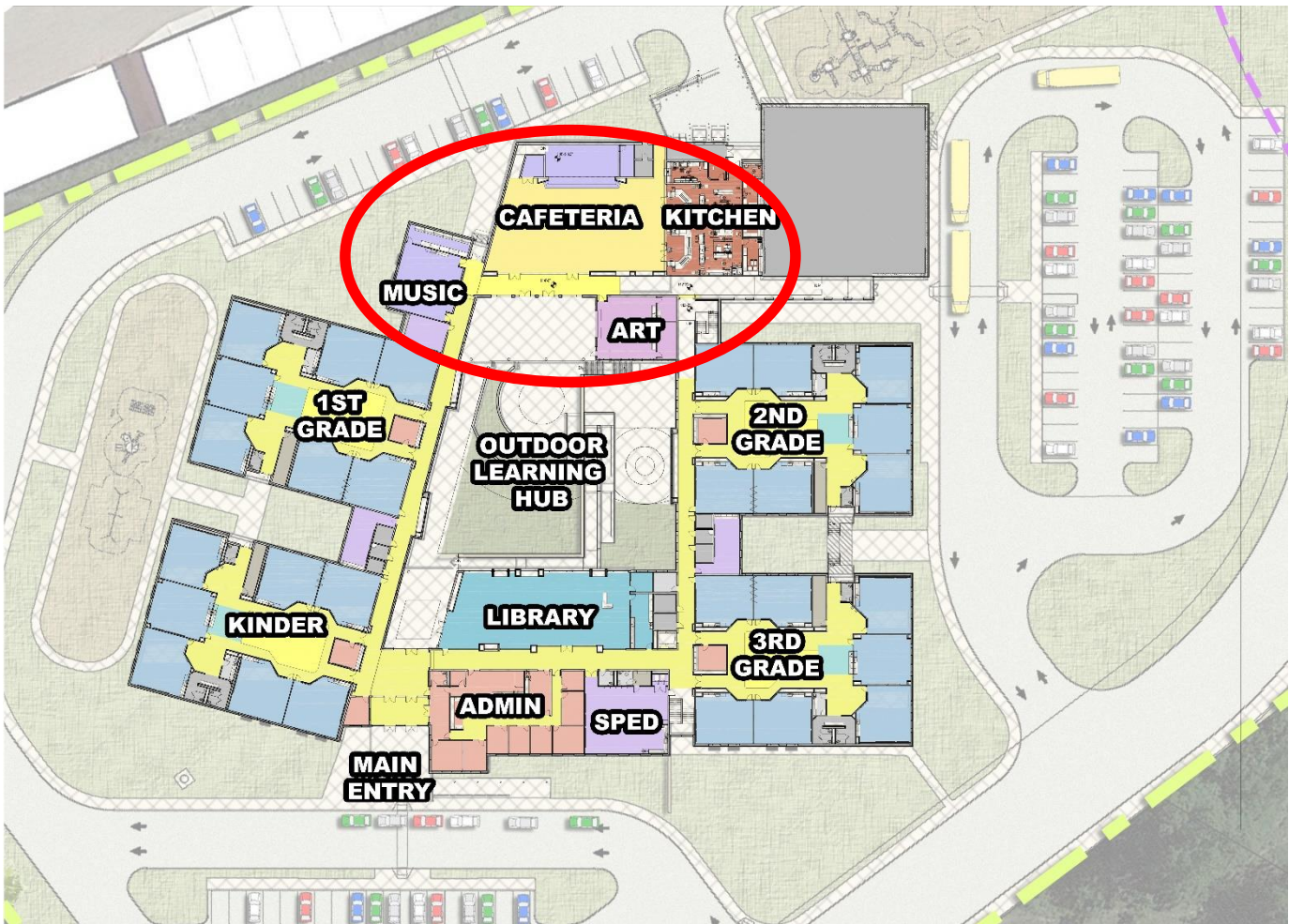
Academic Pod – 2<sup>nd</sup> Grade



Academic Pod – 3<sup>rd</sup> Grade

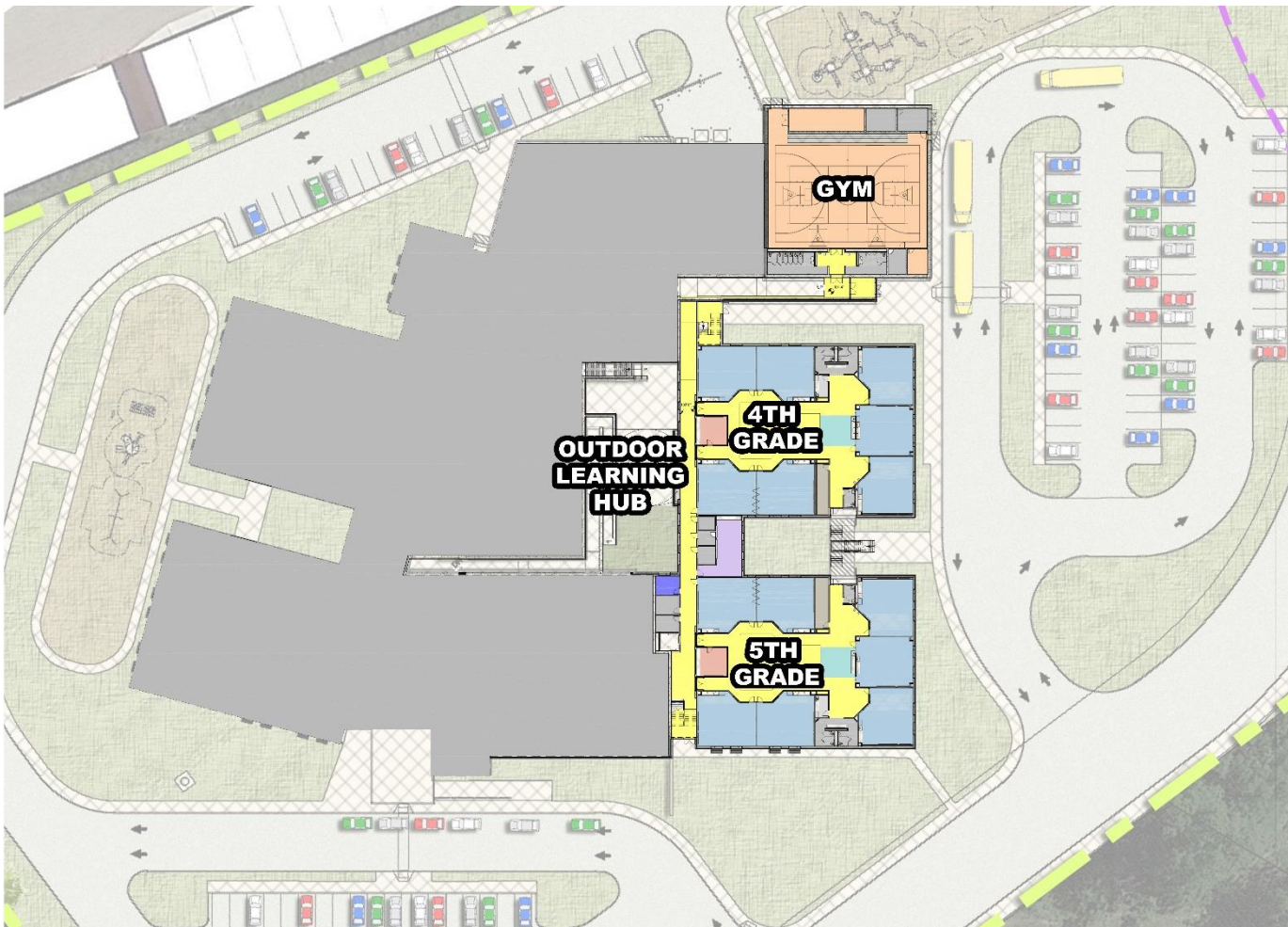


Media Center

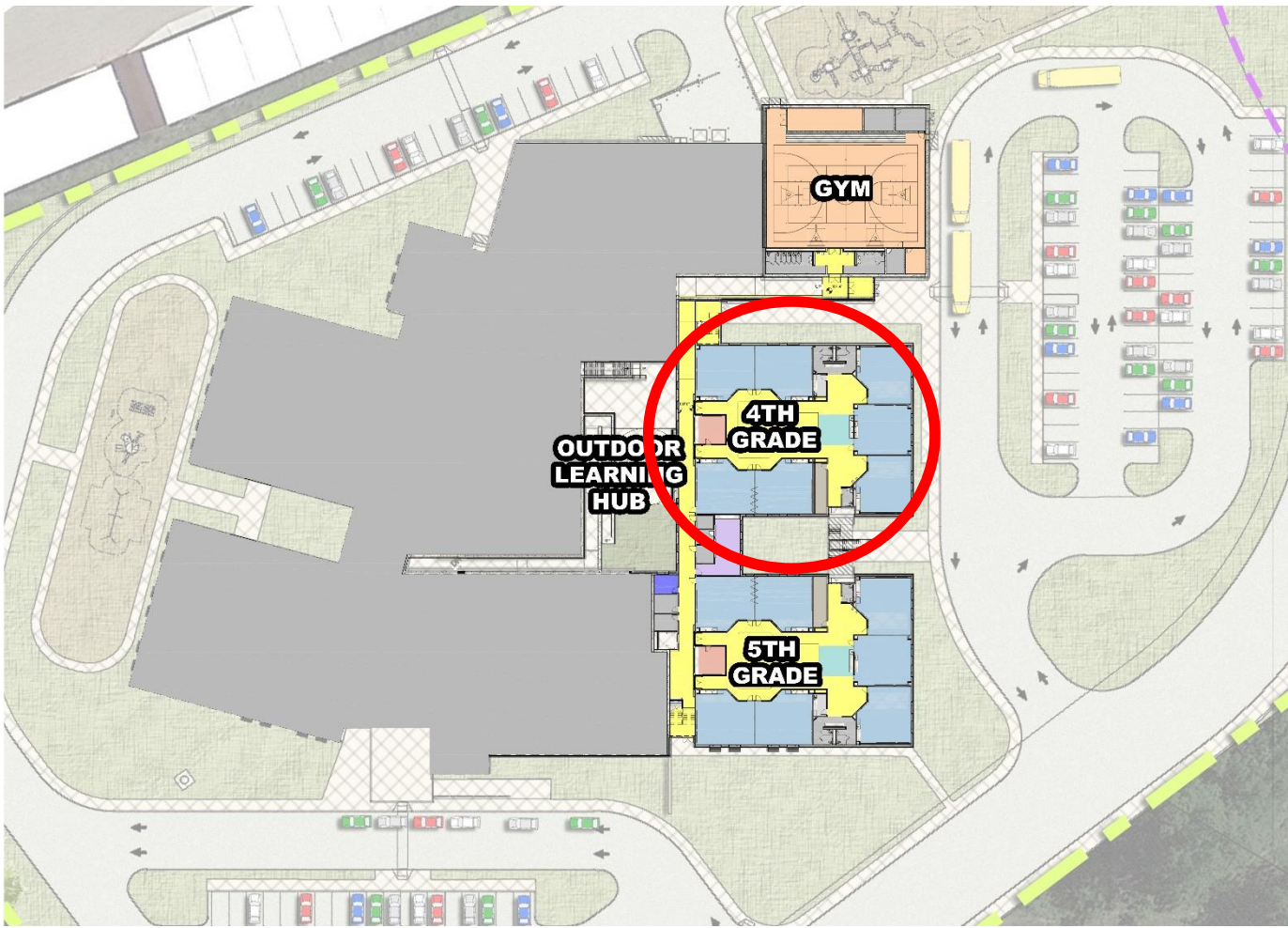


Active Zone – Cafeteria, Music and Art

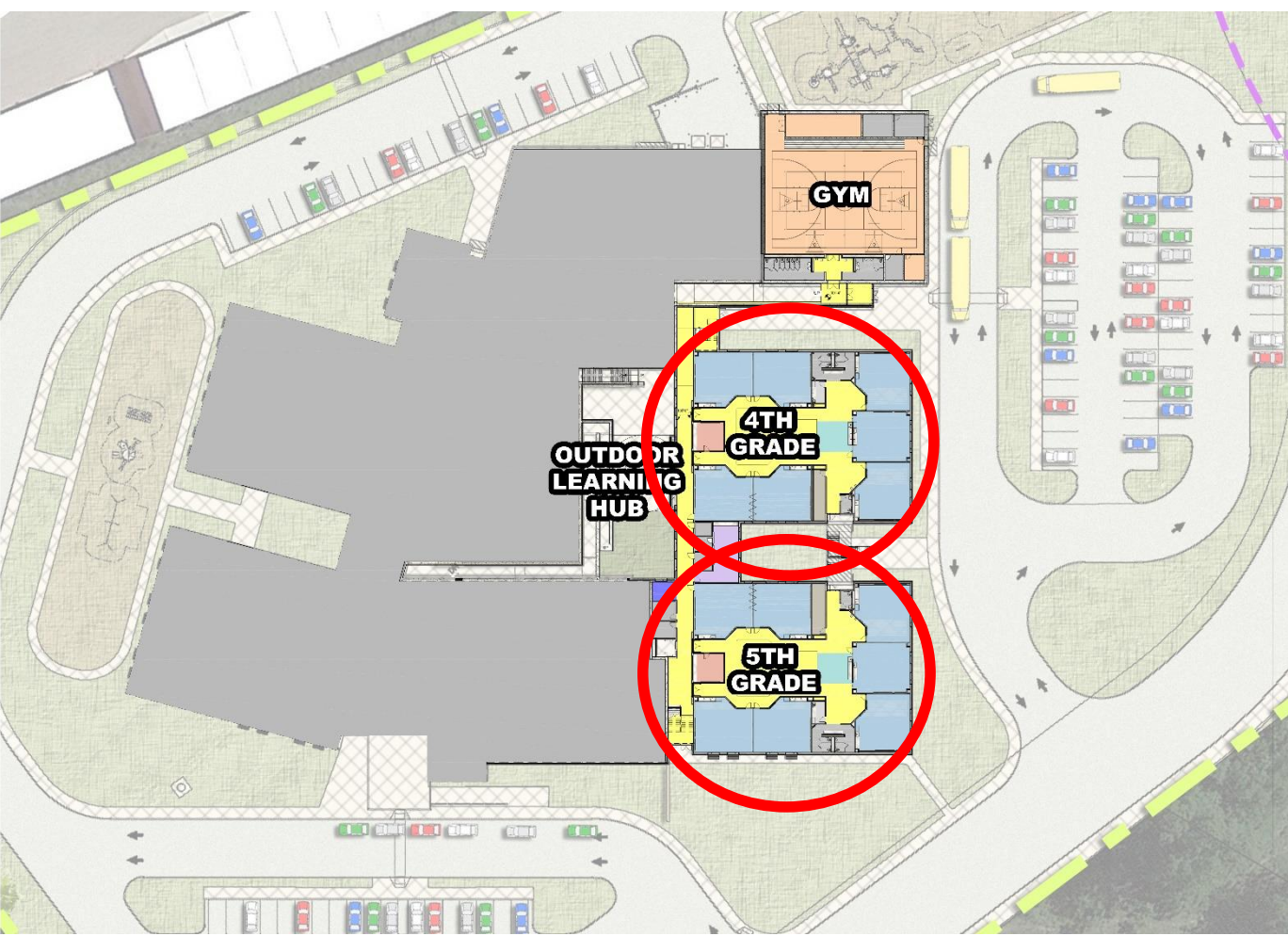




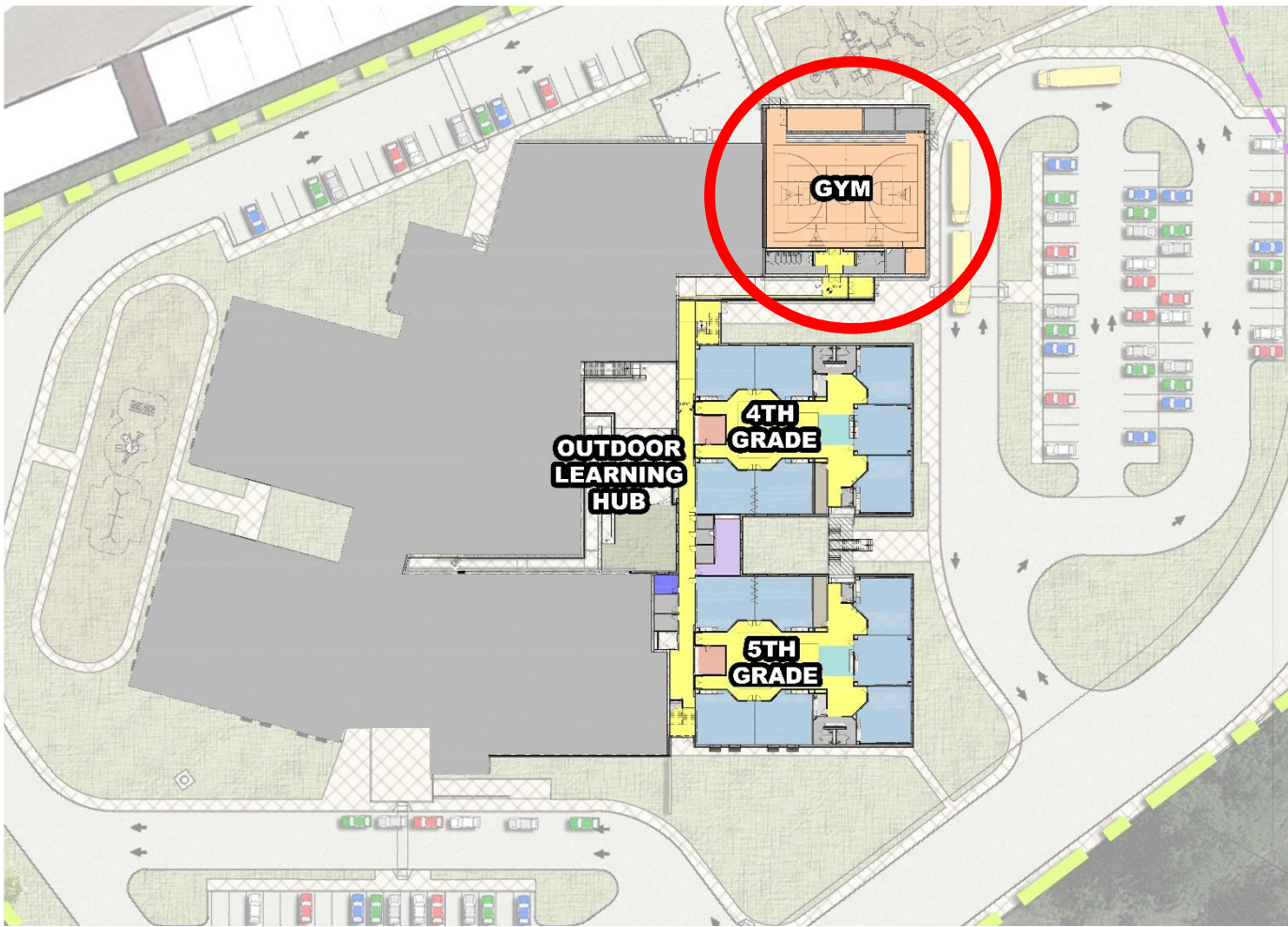
Composite Ground Level – Floor Plan



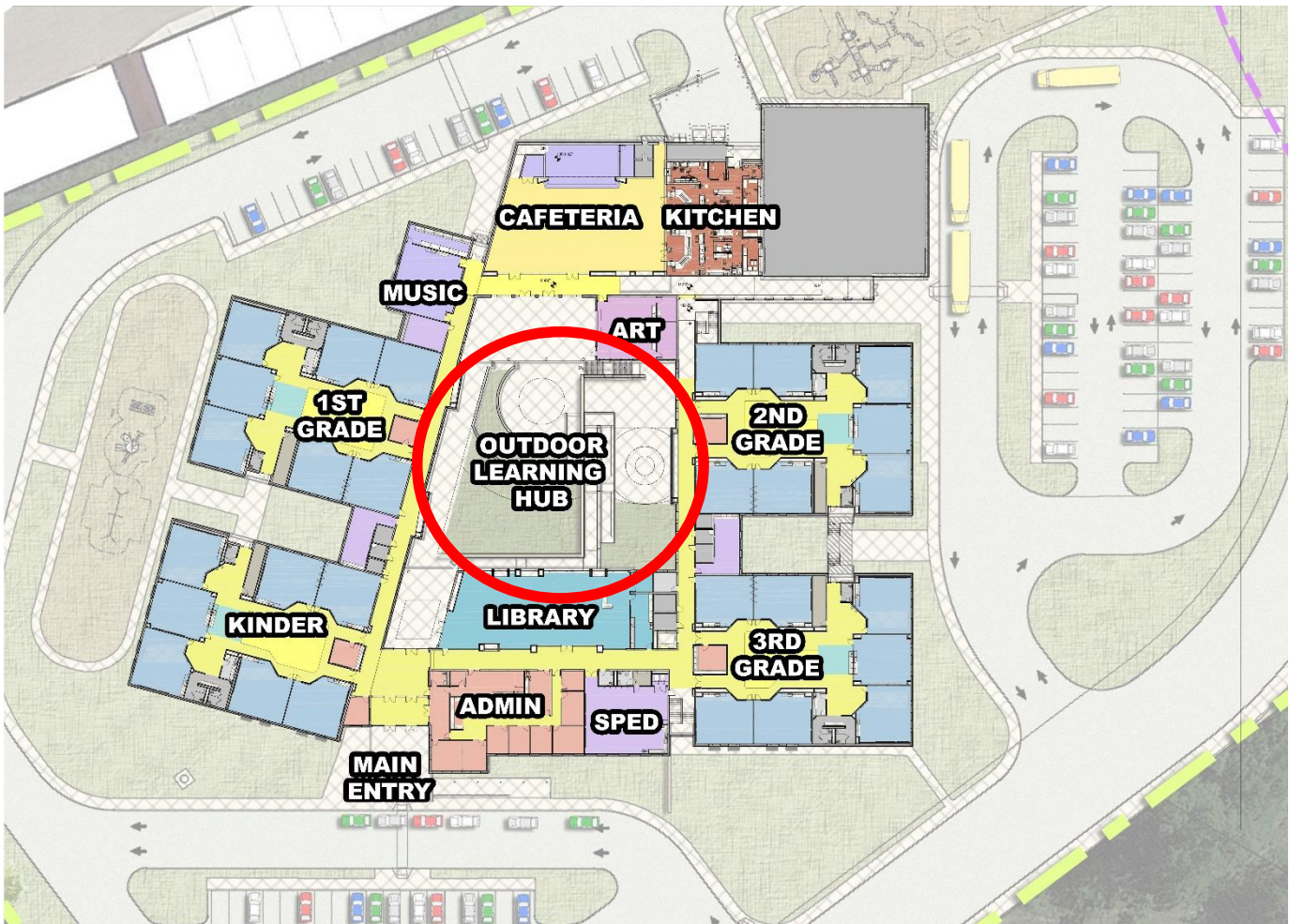
Academic Pod – 4<sup>th</sup> Grade



Academic Pod – 5<sup>th</sup> Grade



Gymnasium / Storm Shelter

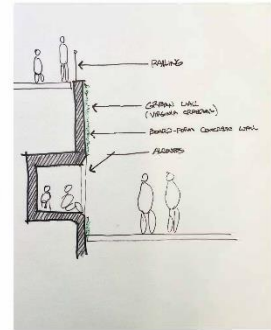
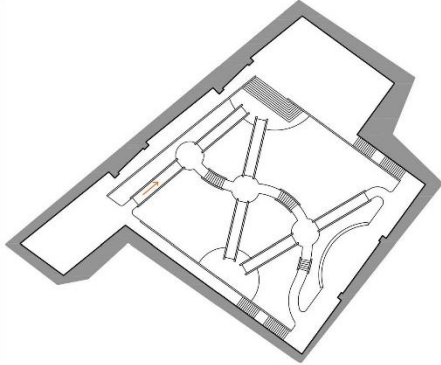
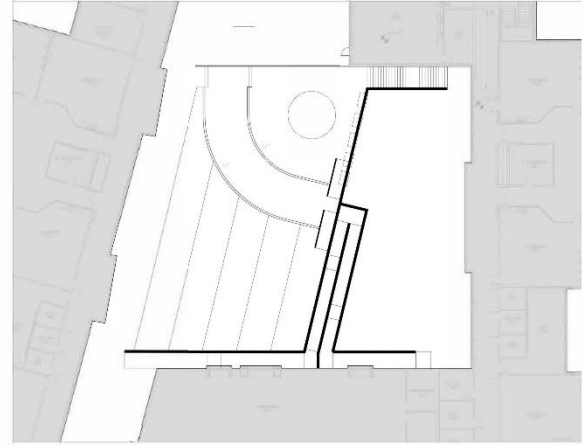
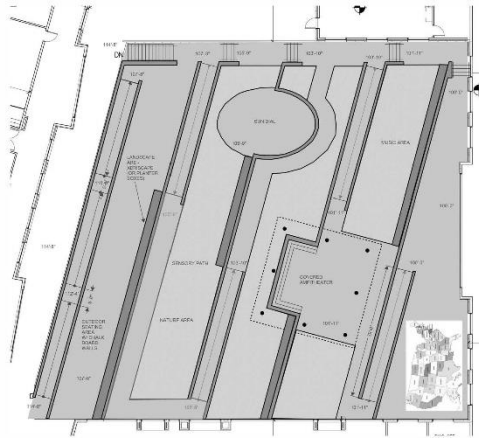
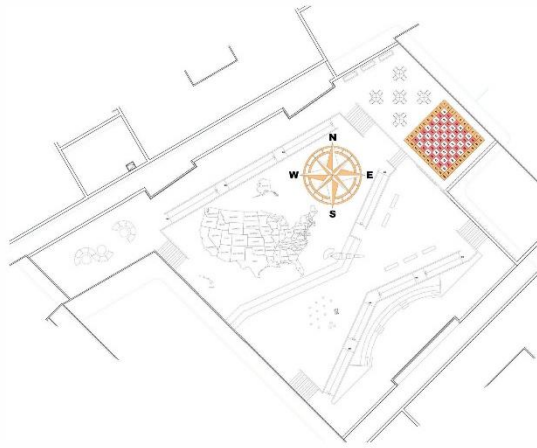


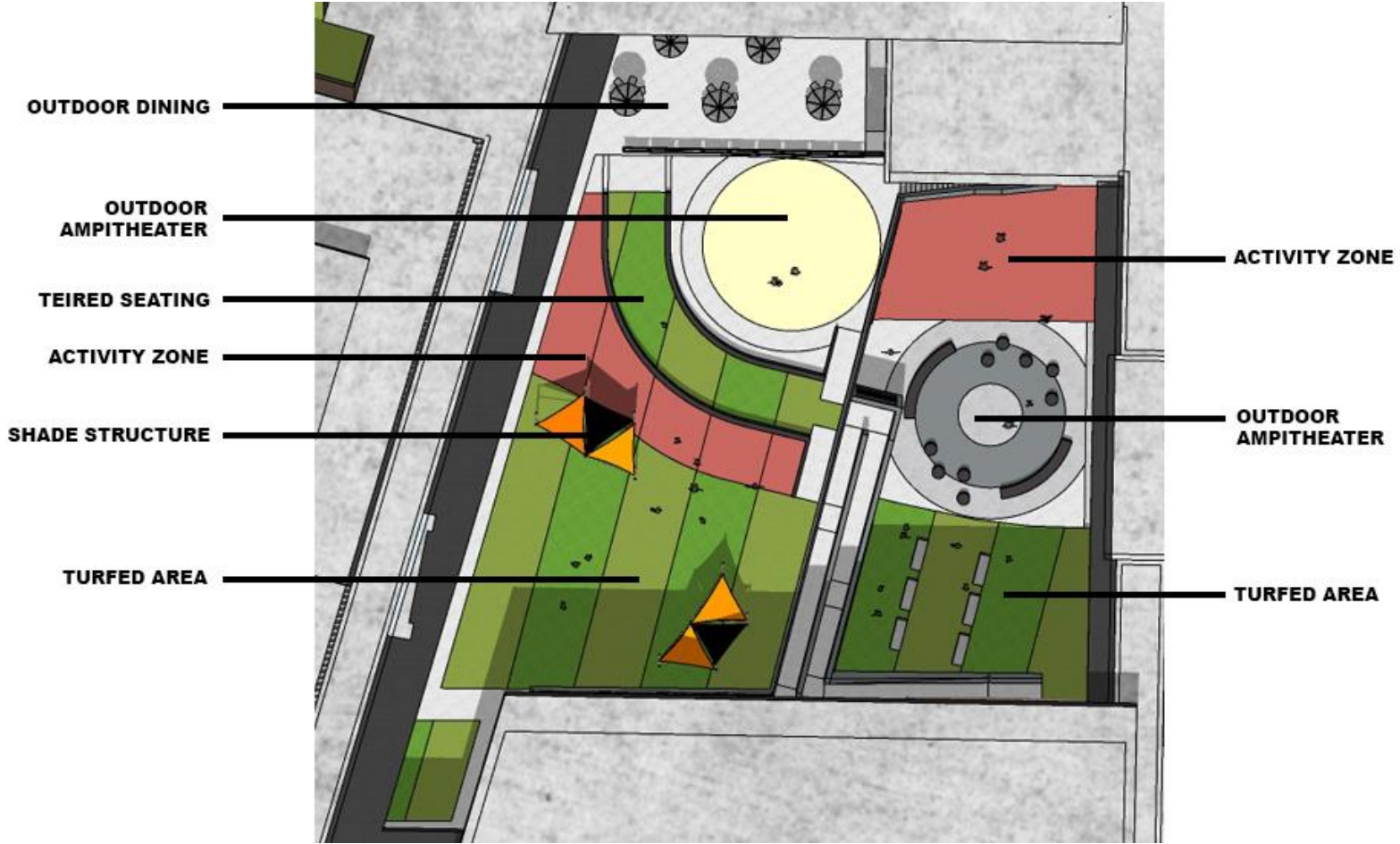
Outdoor Learning Hub

## Elementary Courtyard Design (Outdoor Learning Hub)

### Guiding Principles

- Physical, social, and informational space integrated together so that it becomes a learning technology area
- Learner centered space where students are free to design, explore, collaborate, and perform
- A place where students love to learn
- Accessible learning hub that supports all types of learning
- An area that invites exploration of learning
- Learning space that integrates real world experiences
- Learning space that builds community within the school
- Low maintenance, sustainable space
- Ever evolving space





Conceptual Design Concept





Synthetic Turf



Built-in Seating



Outdoor Teaching



Sail Shade Structures



Water Fountain



Existing Pavement Upgrades



Outdoor Learning Hub Conceptual Rendering



Outdoor Learning Hub Conceptual Rendering



Outdoor Learning Hub Conceptual Rendering

Thank you