

ALEDO INDEPENDENT SCHOOL DISTRICT
PROJECT #2 AND #3 MIDDLE SCHOOLS
May 14, 2020

SCHEMATIC DESIGN PROGRESS UPDATE



ACKNOWLEDGMENTS	01
VISION SESSIONS & CHARRETTES	02
DELIVERABLES	03
MIDDLE SCHOOL 2 DESIGN HISTORY	04
MIDDLE SCHOOL 2 FLOOR PLANS /	05
MIDDLE SCHOOL 2 SITE PLAN / EXTERIOR	06
ALEDO MIDDLE SCHOOL HISTORICAL REVIEW	07
ALEDO MIDDLE SCHOOL FLOOR PLANS / INTERIOR	08
ALEDO MIDDLE SCHOOL SITE PLAN / EXTERIOR	09
PROGRAM	10
SCHEDULE	11



ALEDO INDEPENDENT SCHOOL DISTRICT

PROJECT #2 and #3 MIDDLE SCHOOLS

DISTRICT BOARD OF TRUSTEES

Hoyt Harris	Board President
Jennifer Loftin	Board Vice President
Forrest Collins	Board Secretary
David Lear	Board Member
Jessica Brown	Board Member
Julie Turner	Board Member
Jennifer Taylor	Board Member

BOND PROGRESS COMMITTEE

Kelly Arnold	Mercedes Mayer
Robert Cox	Jaime Saenz
Allison Dearman	Jeremy Pruett
Kathy Fry	Dan Reilley
Kelly Dishman	Carolyn Rekerdres
Nicki Dover	Chad Tregellas
Michael Fernihough	Jeff Streetman
Nick Lester	Jeremy Thompson
Jennifer Gamez	Jeff Wade
Paul Heckathorn	Mandy Wurster
Christi James	
Matt Morris	
Glenna Loftin	

ALEDO ISD CORE DESIGN TEAM

Dr. Susan Bohn	Superintendent
Lynn McKinney	Deputy Superintendent
Earl Husfeld	Chief Financial Officer
Tyler Boswell	Director of Facilities
Officer Fred Collie	Aledo PD
Rick Herrin	Communications
Scott Kessel	Executive Director of Student Services
Amber Crissey	Asst. Deputy Superintendent of C. & I
Staci Hammer	ELAR
Leslee Barnes	Social Studies
Melissa Quisinberry	Technology
Michelle Yates	Science
Debbie Mantooth	Math
Mandy Musselwhite	Principal
Brooks Moore	Director of Technology

PROJECT TEAM

Shannon Bearden, AIA, RID, NCARB, LEED GA Principal, Huckabee
Gary Rademacher, AIA Client Advocate, Huckabee
Konrad Judd, AIA Chief Design Operator, Huckabee
Casey Casstevens, AIA, RID Director of Design, Huckabee
Mike Vermeeren, AIA Director of Planning
Mike King, AIA Planner
Josh Cogburn, AIA, LEED AP Project Architect, Huckabee
Laura McCollum, RID Interior Designer, Huckabee
Esther Sumpter, Assoc AIA, LEED AP Architectural Assoc., Huckabee
Nicole Fraise, Assoc.AIA Architectural Assoc., Huckabee
Karl Pitts, Assoc.AIA Architectural Assoc., Huckabee
Eric James, AIA Project Architect, Huckabee

CIVIL ENGINEERING & LANDSCAPE ARCHITECTURE

Teague Nall & Perkins, Inc.
Fort Worth, TX
Tom Rutledge

STRUCTURAL ENGINEERING - MS2

Huckabee
Fort Worth, TX
Brian Eilerts, PE

STRUCTURAL ENGINEERING - AMS

L.A. Fuess
Dallas, TX
Sue Ingram, PE

MEP ENGINEERING
Baird Hampton Brown
Fort Worth, TX
Ian Bost, P.E., LEED AP

TECHNOLOGY

WJHW
Carrollton, TX
Dave Vieira

FOOD SERVICE

FDP
Dallas, TX
Lance Brooks

ROOFING

ARMKO
Flower Mound TX
Tim Green

Huckabee

PROJECT #2 AND #3 MIDDLE SCHOOLS | ALEDO INDEPENDENT SCHOOL DISTRICT

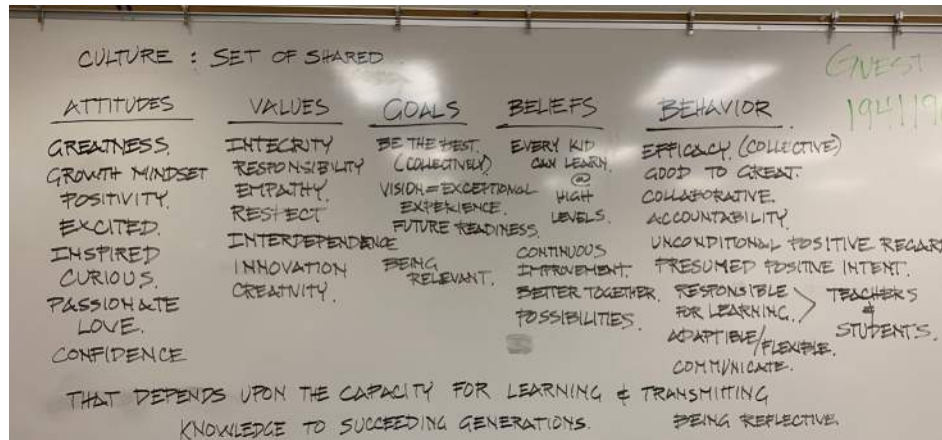
NOT FOR REGULATORY APPROVAL, PERMITTING OR CONSTRUCTION.



ALEDO INDEPENDENT SCHOOL DISTRICT PROJECT #2 and #3 MIDDLE SCHOOLS

VISION / DESIGN SESSIONS

FEBRUARY 4, 6, 11



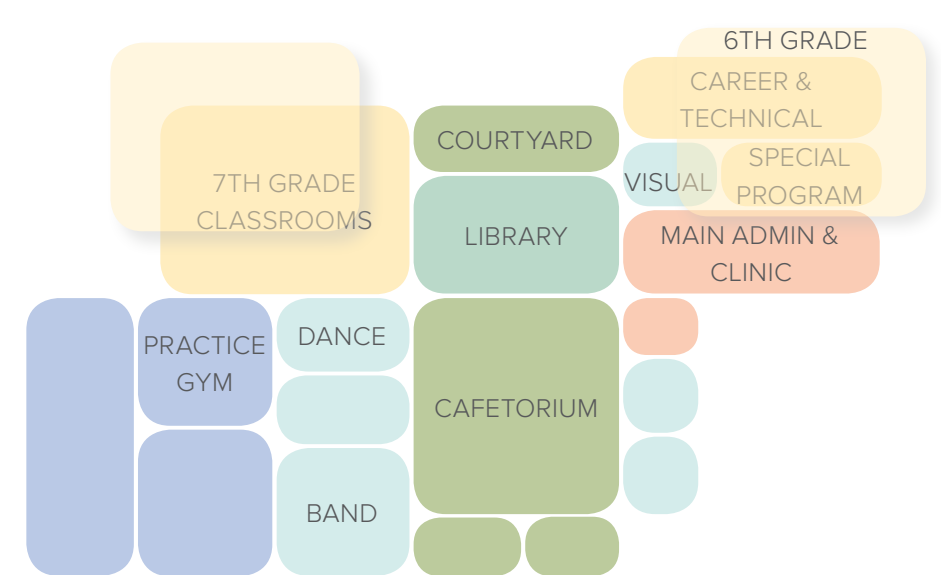
COMMUNITY & STUDENT DESIGN CHARRETTE

FEBRUARY 13TH AND 19TH



PROGRAM VALIDATION ADJACENCY DIAGRAMMING

FEBRUARY 27 & MARCH 6




Huckabee


PROJECT #2 AND #3 MIDDLE SCHOOLS | ALEDO INDEPENDENT SCHOOL DISTRICT

NOT FOR REGULATORY APPROVAL, PERMITTING OR CONSTRUCTION.


EMPATHY DIAGRAMMING

see


- + Calm, Natural, Inviting Colors
- + Bright Colors
- + Reasonable Transparency
- + Student & Teachers Collaborating
- + Sight Lines for Security
- + Open Spaces
- + Gallery Walk, History, Culture
- + Academics/Art/Music/Sports/Theatre
- + Administration Collaborating
- + Investing Time in the Students
- + Big Open Meeting Area
- + Orientation/Wayfinding
- + Positive affirmations
- + Welcoming Staff
- + Electronic Announcements
- + Natural Light
- + Accomplishments, Awards, Student Work on display
- + Architecture/Entry at proportional scale
- + Beautiful building seen from a distance
- + Accessible Entrances
- + Native Landscaping
- + Clean/Well Maintained
- + Supply & Storage Rooms for Teachers and Students
- + Flexible Technology
- + Learning and Teaching on Display
- + School Spirit

hear


- + Quiet Floors, No Echo
- + Acoustics
- + Quiet Hallways
- + Excitement!
- + Communication System
- + Respectable Discourse
- + Music – Quiet for Privacy, Accessible Playlist
- + Noise Control between Classes
- + Intentional Quiet Spaces
- + Announcements
- + Calm Cats
- + Respectful Language, Discourse

feel

- + “Unity Wall”
- + Unity between Schools
- + Safe
- + Pride
- + Included
- + “I want to be here”
- + Valued
- + Creative
- + Inspired
- + I have the choice of space and ability to collaborate
- + Temperature Control
- + Professional Learning - Nice Workroom
- + Confident
- + Comfortable
- + Warm
- + Accomodated
- + No Sensory Overload
- + Motivated
- + Personal Space
- + Safe Restrooms
- + No hiding spots
- + Comfortable
- + Accepted
- + Equipped - “I have what I need.”
- + Empowered
- + I have choices
- + Confident/Successful
- + Ownership/Inspired
- + Climate Control & Lighting
- + Keyed Lighting

think

- + “Greatest Place Ever!”
- + Safe
- + Walls for Thinking on Display
- + “I Belong”
- + “This is Relevant”
- + My Parking Space Rocks!
- + I Love My Job
- + Welcome
- + Included
- + Purposeful
- + Pride
- + “Nice Space”
- + Teachers want to be here
- + This smells good = Learning Smells
- + I have nice things = Quality of Furniture, Tools, Equipment
- + I’m Informed through Video Screens and Announcements
- + I know my Schedule (Changing Schedules)
- + I have Multiple Possibilities (Flexibility)
- + I know how to solve that problem
- + Community - We are all working together toward the same goal
- + “Path to Greatness”

say

- + “This is Fun!”
- + “You’re gonna have a good time.”
- + “I learned a lot today.”
- + “It’s better than what we had.”
- + “I can’t wait to go back.”
- + “P.E. was awesome.”
- + “I’m going to use this...”
- + “I love my space.”
- + “Guess what we did today.”
- + “I’m tired.”
- + “I’m proud of my school.”
- + “It smells good.” (Not like a bathroom)

YESTERDAY, TODAY AND TOMORROW

While planning the future of new Middle Schools, it seems only fitting to give consideration to both the past and present. This exercise is intended to invoke conversation about the people, spaces and events from yesterday and today that have come to encompass values and define culture either at a particular campus or throughout the district. It also allows for consideration of those things that might inhibit growth and impede upon the vision for the future. What aspects from yesterday and today do we want to take with us into the future? What aspects do we need to leave behind?



WHAT DO WE LEAVE BEHIND?

- + Limited spaces, both size and quantity
- + Dead bugs
- + Lack of windows
- + Class pets
- + Short passing periods
- + Mice
- + Flooding restrooms
- + Cliques
- + Traffic
- + Rows of desks

WHAT DO WE TAKE WITH US?

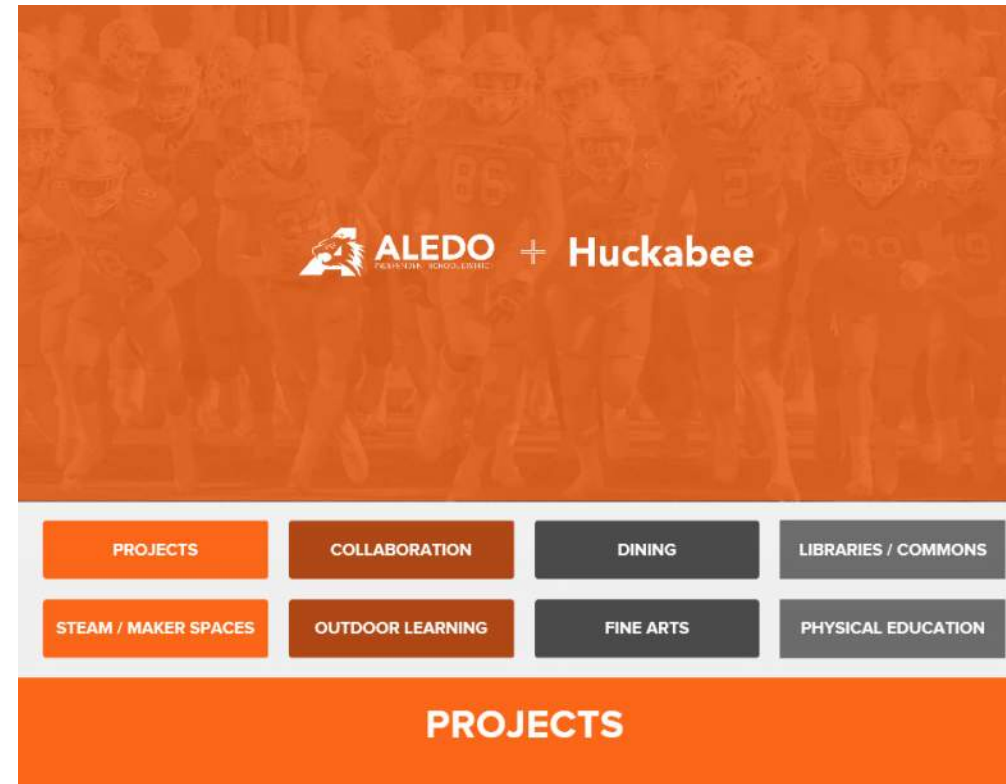
- + Legacy
- + Pride and tradition among both schools
- + Small Community
- + All kids able to participate in athletics
- + High Academic Standards
- + Equitability of school colors at both campuses
- + Expectation of Excellence
- + Team teaching opportunities
- + Paint Shack at both schools
- + Small Town Community
- + Open library
- + Parent/Student Activities
- + Community Engagement

WHAT DO WE WANT FOR OUR FUTURE?

- + Community Service Events
- + Flexible Walls
- + Flexible and Fun Learning
- + Choice in furniture
- + Choice in Space
- + Choice in Academic Programs
- + Traffic flow
- + Technology
- + Student Centered and Collaborative Learning
- + Natural Light
- + Learning on Display
- + Flexible Student Storage
- + Positivity wall
- + CTE programs and spaces
- + Audio Visual Media
- + Updated plumbing and water bottle filling stations
- + Controlled Entrances
- + Modern Security - Technology
- + Science labs
- + More parking
- + Parent/Volunteer center
- + Protection from elements
- + Library at heart of school and open
- + Classroom 'Houses' per Grade
- + Welcoming atmosphere and design
- + Tech rich
- + Equitability between Athletics and Arts



DESIGN EXPECTATIONS WORKBOOK



- DESIGN EXPECTATIONS WORKBOOK: DEVELOPED WITH DIRECTOR OF CONSTRUCTION AND FACILITIES TO UNDERSTAND EXISTING BUILDING SYSTEMS AND CONSTRUCTION TYPES PREFERRED BY THE DISTRICT.



NOT FOR REGULATORY APPROVAL, PERMITTING OR CONSTRUCTION.



ALEDO INDEPENDENT SCHOOL DISTRICT PROJECT #2 and #3 MIDDLE SCHOOLS

PRIORITY DESIGN GOALS

- + Library as the HEART of the school
- + Sixth Grade Neighborhood isolated from seventh and eighth
- + Clear lines of site for security cameras
- + Restroom entrances located where they are easily monitored by staff
- + Collaboration Spaces that are directly viewed and accessed from classrooms
- + Library and/ or Cafeteria can be closed or open
- + Outdoor Learning (courtyards) with minimal (or reasonable) maintenance
- + Classrooms receive natural light
- + Athletic spaces adjacent to outdoor fields and amenities reducing need for field house and ancillary buildings.
- + Separate entrances for main day to day operations vs after hour events.

VIRTUAL DESIGN CHARRETTES

MARCH 6 - ADJACENCY DIAGRAMMING

APRIL 3 - MS2 SITE AND PLAN CONCEPT REVIEW

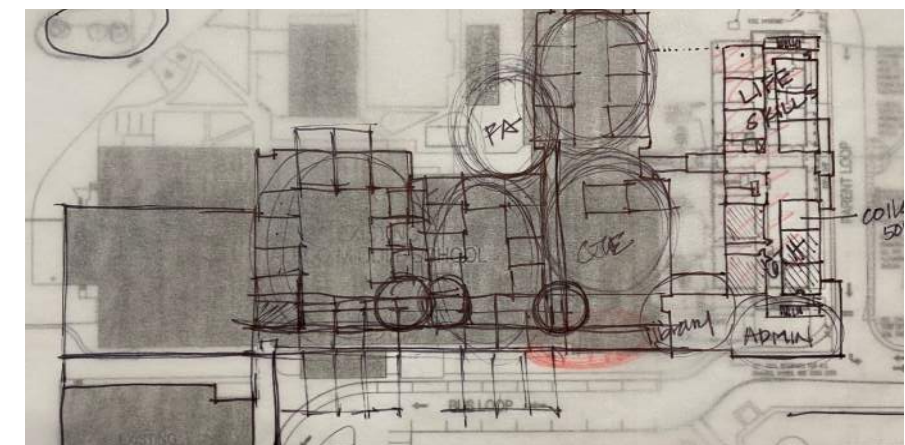
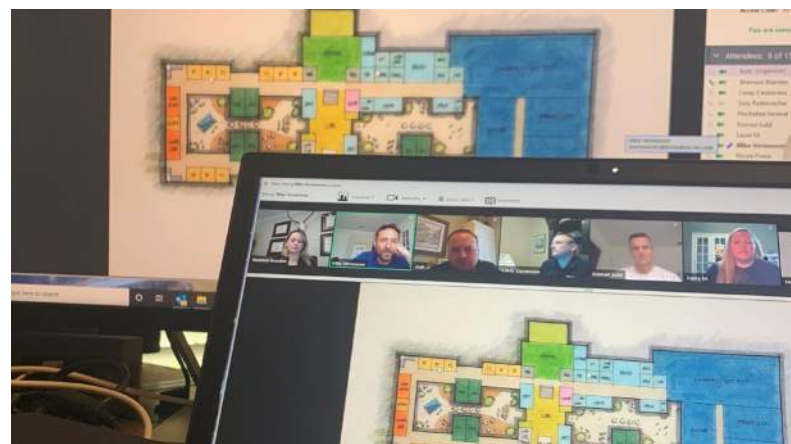
APRIL 15 - AMS SITE, PLAN, COST CONCEPT REVIEW

APRIL 20 - MS2 SITE AND PLAN DECISION

APRIL 27, 28 - SCHEMATIC FLOOR PLAN CHARRETTES

MAY 1 - CURRENT - FOLLOW UP DEPARTMENTAL CHARRETTES

MAY 19 - STUDENT CHARRETTES



UTILIZING INFORMATION FROM THE DESIGN SESSIONS AND CREATED DELIVERABLES, THE DESIGN TEAM DEVELOPED DESIGN PRIORITY GOALS WITH THE DISTRICT TO FOCUS ON AS WE WORK TO CREATE AND ENVISION THE FUTURE OF ALEDO MIDDLE SCHOOLS AND ALEDO SCHOOL DESIGN.

THE FOCUS THEN TURNED TO USING THOSE PRIORITIES AND PREVIOUS DESIGN SESSIONS TO DEVELOP DESIGN OPTIONS AND BUILDING PLANS FOR EACH CAMPUS. TYPICALLY HUCKABEE WOULD MEET IN PERSON WITH THE DISTRICT IN A FULL DAY DESIGN SESSION TO DEVELOP THESE PLANS. DUE TO THE CURRENT PANDEMIC, PLANS WERE REVISED AND VIRTUAL DESIGN MEETINGS WERE HELD AND PLANS WERE CREATED VIA VIRTUAL WEB SESSIONS.

DESIGN SESSIONS THROUGHOUT APRIL HAVE BEEN VIRTUAL AND INCLUDED CENTRAL ADMIN, TEACHERS, AND VARIOUS ALEDO STAFF

Huckabee

PROJECT #2 AND #3 MIDDLE SCHOOLS | ALEDO INDEPENDENT SCHOOL DISTRICT

NOT FOR REGULATORY APPROVAL, PERMITTING OR CONSTRUCTION.



MIDDLE SCHOOL #2

PROJECT OVERVIEW

DISTRICT	Aledo ISD
SCHOOL	Middle Schools
GRADES SERVED	6th - 8th Grades
FUNCTIONAL CAPACITY	1,200
APPROX. SIZE	182,000 - 189,000 SF
SITE SIZE RANGE	35-45 acre minimum

HOURS OF OPERATION (DAYS/TIMES)

Instructional Day
Monday - Friday, 8:40 AM (1st Period) - 4:00 PM (7th Period)
Extracurricular Activities
Monday - Friday, 4:00 PM (Depending on Department Event)

INSTRUCTIONAL PROGRAM

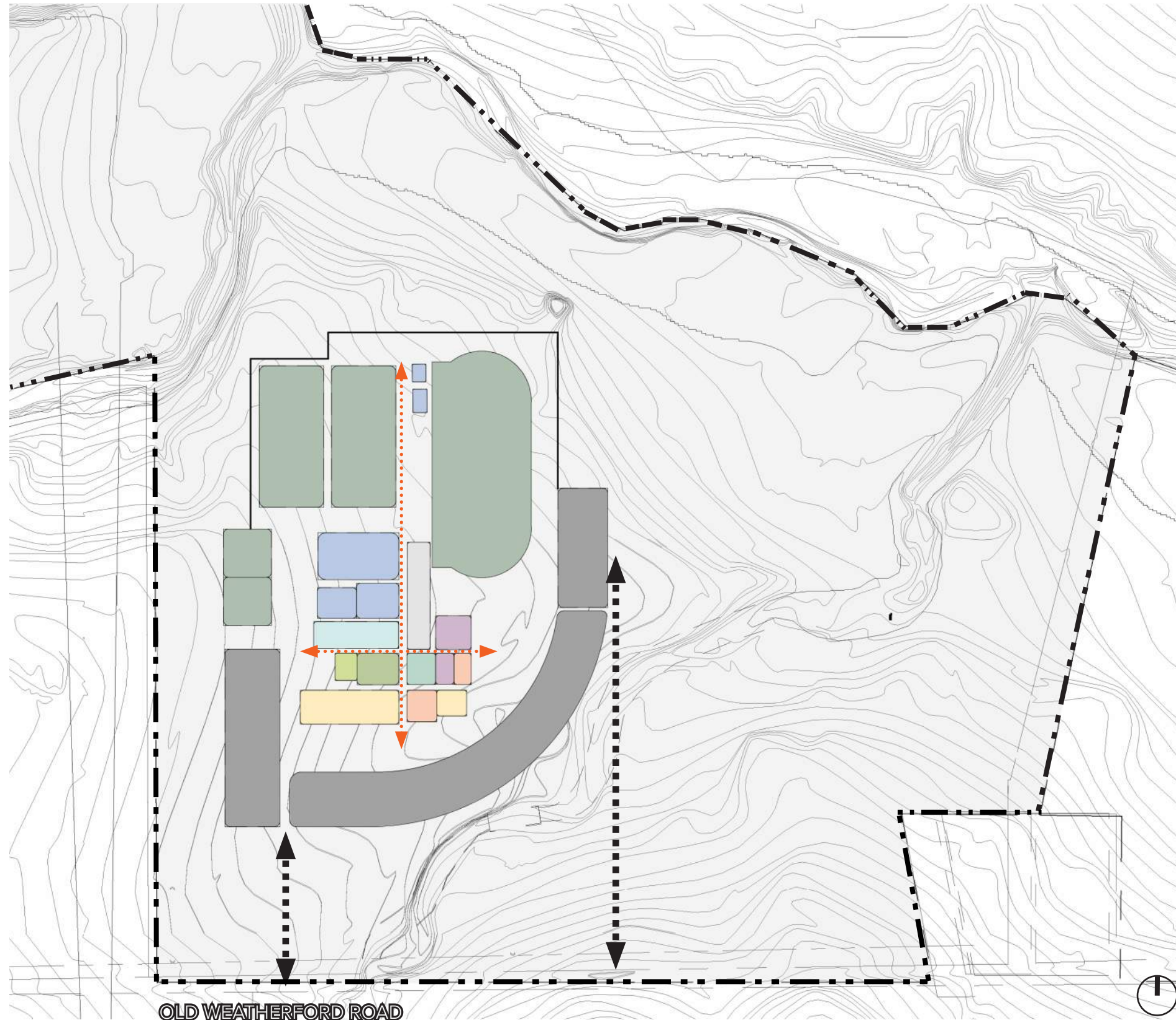
Foundation Curriculum	Enrichment Curriculum	Physical Education (PE)
English Language Arts & Reading	Fine Arts	+ Football
Math	+ Band	+ Basketball
Science	+ Orchestra (possibly in future)	+ Tennis
History	+ Choir	+ Volleyball
	+ Art	+ Soccer
	+ Dance	+ Dance (for PE Credit)
	+ Theater	+ Cheerleading
	Health Education	+ Track & Field
	Languages other than English (LOTE)	+ Cross Country
	CTE	
	STEM	

SITE, SAFETY & SECURITY

- + Double queue with dedicated student loop, staff loop, parent loop, bus loop, and SPED loop
- + 300 parking spaces (50 front (visitor+staff), 250 back (staff))
- + Cameras to accommodate floor plan
- + Access control
- + Perimeter fencing
- + Controlled vestibule
- + Panic with lock down
- + No metal detectors, recognition or entrance gates
- + Visual surveillance from reception to vestibule and parking lot
- + Protected areas or zones
- + Additional considerations will be evaluated on a case by case basis



ALEDO INDEPENDENT SCHOOL DISTRICT PROJECT #3 NEW MIDDLE SCHOOL



COLOR LEGEND

- Administration
- Academic/Specials
- Library
- Dining
- Kitchen
- Athletics
- Fine Arts
- Career/Tech
- Fields
- Courtyards
- Parking

LINE TYPE LEGEND

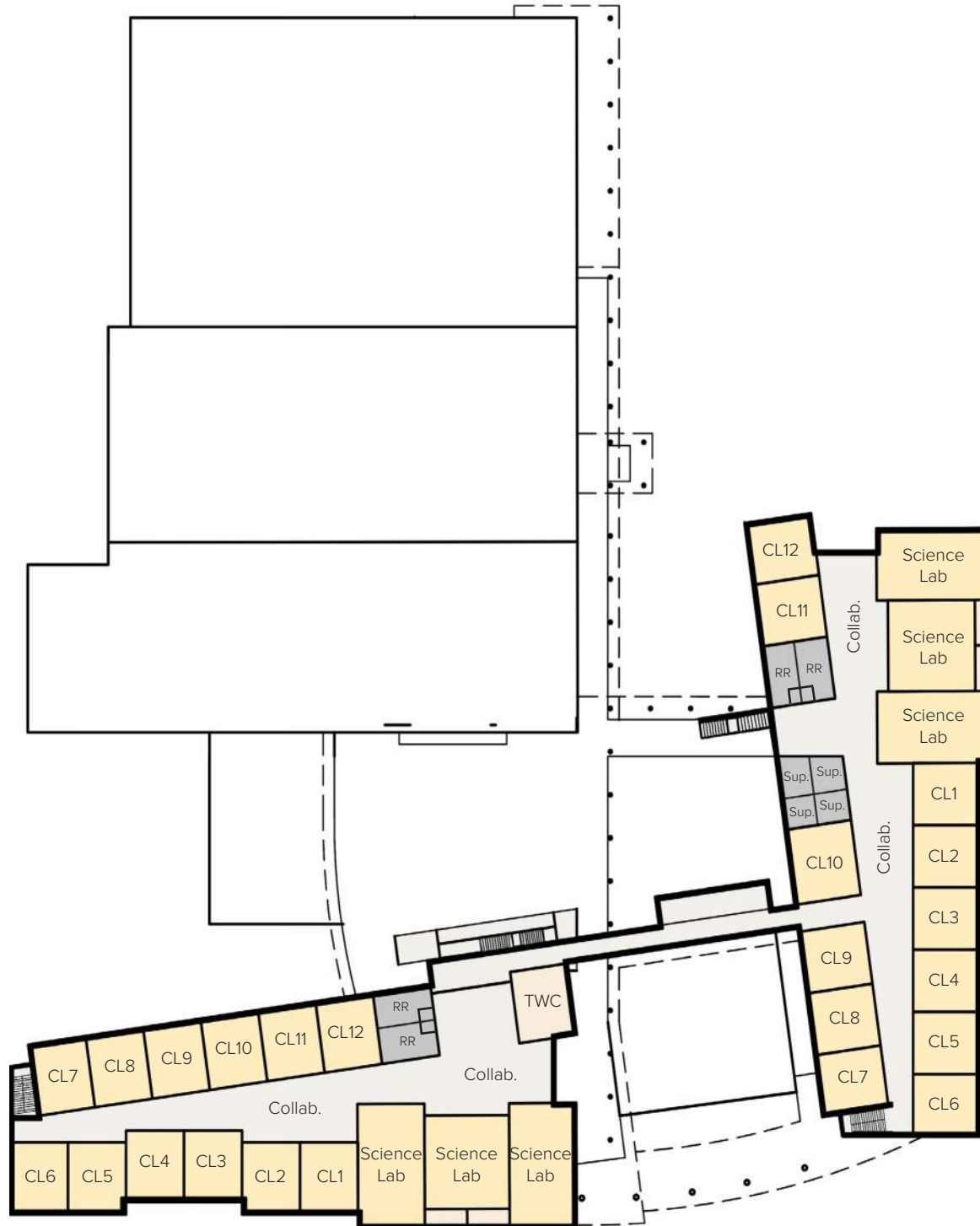
- Entry Drive
- Circulation
- Property Line

SEVERAL DESIGN ITERATIONS WERE PRODUCED AND THROUGH ANALYSIS OF THE EXISTING SITE CONDITIONS, COST, AND CONVERSATIONS ON BEST FACILITY LONG TERM USE, THE PROVIDED LAYOUT WAS DETERMINED AS BEST CASE TO MOVE FORWARD.

THE SITE AND BUILDING LAYOUT LENDS ITSELF TO A LINEAR / VERTICAL NORTH SOUTH ORIENTATION DUE TO THE NATURAL GRADING (SLOPE) OF THE TERRAIN, THE CREEK TO THE EAST, AND THE FLOOD PLAIN AT THE NORTH EAST PORTIONS OF THE SITE.

FRONTING THE BUILDING ENTRY IN A SOUTH TO SOUTH EAST SETS THE BUILDING FRONTAGE FOR SUPERIOR VISIBILITY AND BEST CASE ENTRY POINTS AND ACCESS FROM OLD WEATHERFORD ROAD.

SITE ANALYSIS



COLOR LEGEND

- Administration
- Administration Support
- Academic/Specials
- Academic/Specials
- Library
- Library Support
- Dining
- Kitchen
- Athletics
- Athletic Support
- Fine Arts
- Fine Arts Support
- Career/Tech
- Career/Tech Support
- Circulation
- Restrooms/Support Spaces
- Courtyards

THE SHOWN SCHEMATIC CONCEPT FLOOR PLAN WAS DEVELOPED WITH THE DISTRICT BASED ON INFORMATION RECEIVED AT VISION SESSIONS, PROGRAM ADJACENCY MEETINGS, AND VIRTUAL DESIGN SESSIONS OVER THE PAST THREE MONTHS.

THE PLAN IS COMPACT IN NATURE, CONFORMING TO THE NATURAL SITE CONDITIONS, YET FITTING THE NEEDS TO SET THE PRECEDENT FOR FUTURE ALEDO MIDDLE SCHOOL DESIGN AND CURRICULUM NEEDS.

THE PLAN COMPLIMENTS AND INTEGRATES END USER FEEDBACK AND CHECKS THE PRIORITY GUIDELINES.



Huckabee

PROJECT #2 AND #3 MIDDLE SCHOOLS | ALEDO INDEPENDENT SCHOOL DISTRICT

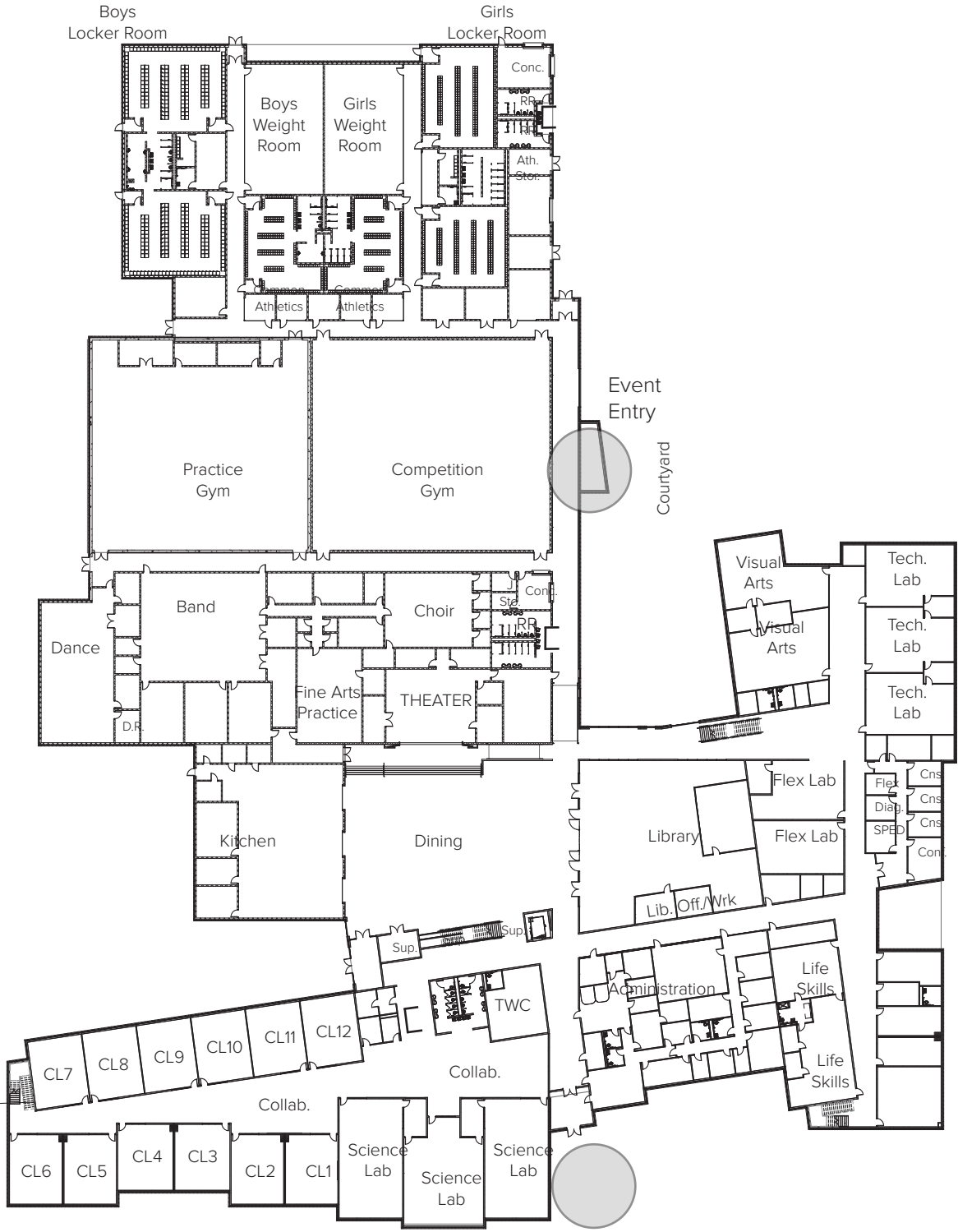
NOT FOR REGULATORY APPROVAL, PERMITTING OR CONSTRUCTION. SHANNON BEARDEN TX - 23389

SECOND FLOOR

FLOOR PLAN - SCHEMATIC CONCEPT PLAN

COLOR LEGEND

- Administration
- Administration Support
- Academic/Specials
- Academic/Specials
- Library
- Library Support
- Dining
- Kitchen
- Athletics
- Athletic Support
- Fine Arts
- Fine Arts Support
- Career/Tech
- Career/Tech Support
- Circulation
- Restrooms/Support Spaces
- Courtyards



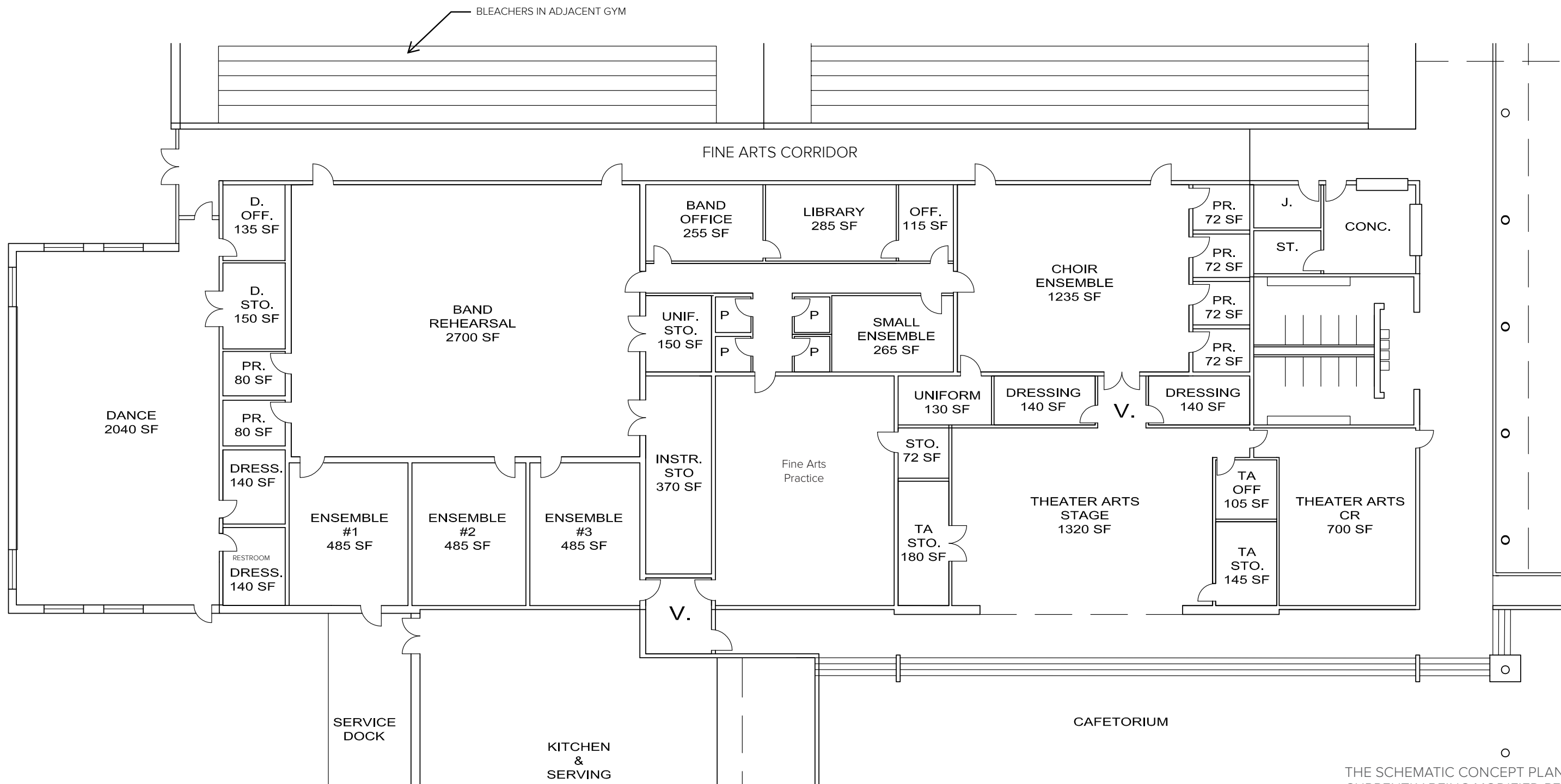
FIRST FLOOR



SECOND FLOOR

THE SCHEMATIC CONCEPT PLANS ARE CURRENTLY BEING MODIFIED PER END USER (TEACHER/ADMIN) FEEDBACK AND WILL CONTINUE TO BE DEVELOPED AS WE MEET WITH STUDENTS AND THE COMMUNITY.

AS WE MOVE TOWARDS THE NEXT PHASE OF DESIGN DEVELOPMENT, WE WILL CONTINUE TO MODIFY THE PLANS TO BEST FIT THE DISTRICT NEEDS.



THE SCHEMATIC CONCEPT PLANS ARE CURRENTLY BEING MODIFIED PER END USER (TEACHER/ADMIN) FEEDBACK AND WILL CONTINUE TO BE DEVELOPED AS WE MEET WITH STUDENTS AND THE COMMUNITY.

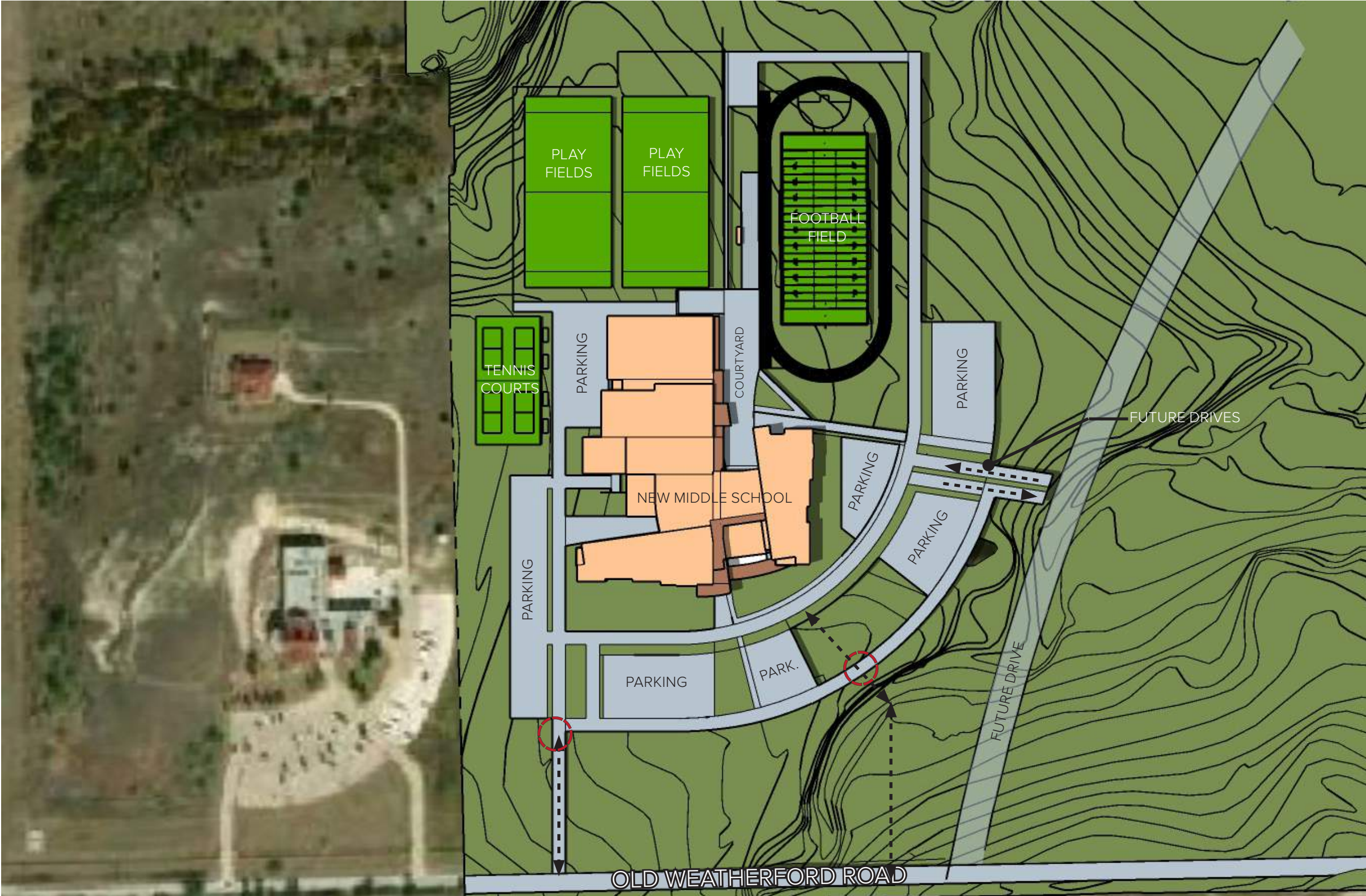
AS WE MOVE TOWARDS THE NEXT PHASE OF DESIGN DEVELOPMENT, WE WILL CONTINUE TO MODIFY THE PLANS TO BEST FIT THE DISTRICT NEEDS.



STUDENT COLLABORATION SPACE: VIEW FROM MODEL TO BE DEVELOPED AND RENDERED FOR BOARD MEETING JUNE 8, 2020



DINING, THEATER STAGE, AND LIBRARY: VIEW FROM MODEL TO BE DEVELOPED AND RENDERED FOR BOARD MEETING JUNE 8, 2020



LEGEND

- SITE
- BUILDINGS
- EXISTING BUILDINGS
- ENTRY
- WIND
- WINTER WINDS
- SUMMER WINDS
- SUN
- SUN PATH

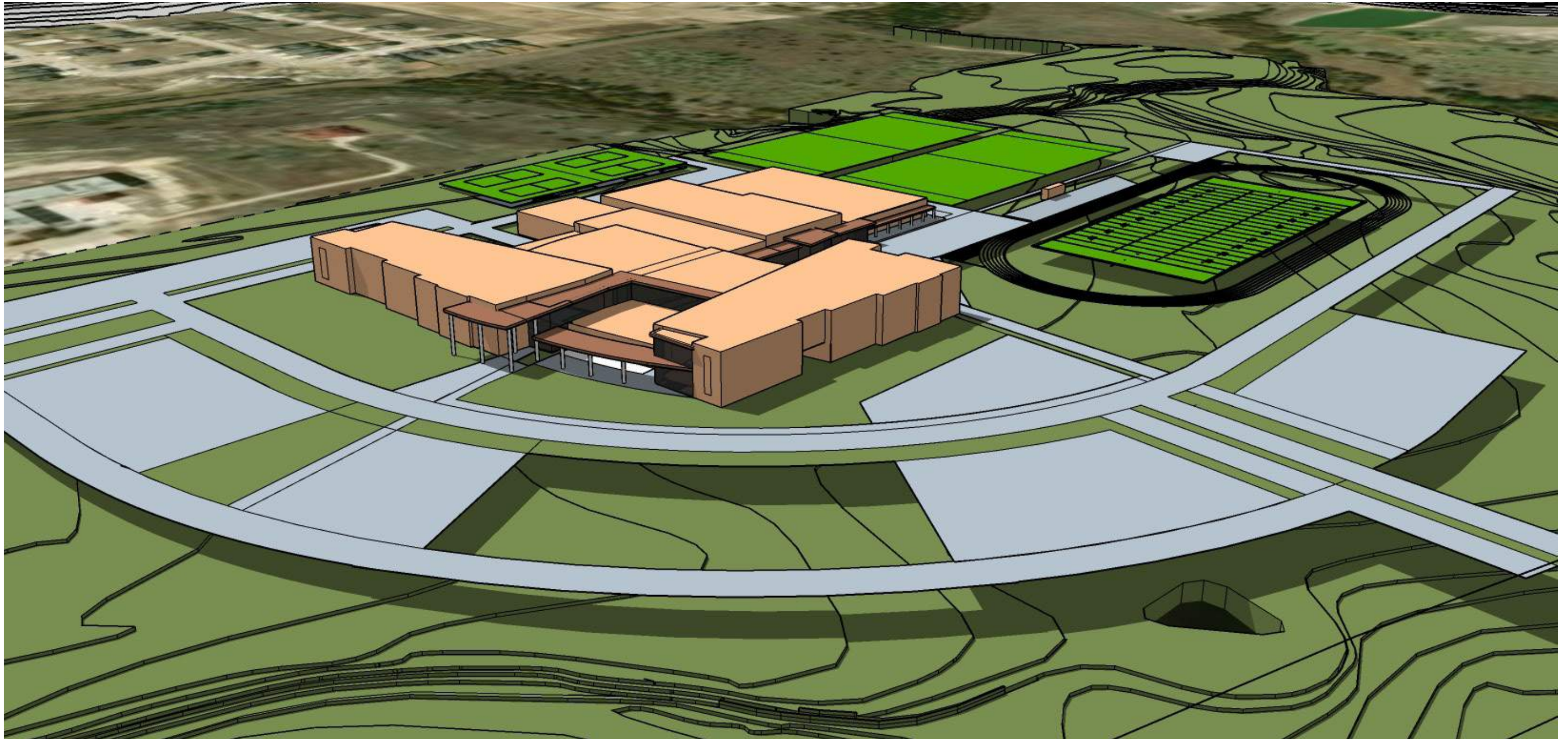
THE SCHEMATIC CONCEPT SITE PLAN IS CURRENTLY BEING COORDINATED WITH THE CIVIL ENGINEER FOR BEST LOCATION OF PARKING AND ENTRY DRIVE ACCESS POINTS.

PARKING 250-300+

CARE AND CONSIDERATION OF BUILDING PLACEMENT HAS BEEN DISCUSSED AS IT PERTAINS TO EXISTING SITE ELEMENTS.

- SITE WILL ALLOW FOR THREE DESIGNATED ENTRY/ DROP OFF POINTS:
- MAIN ENTRY
 - LIFE SKILLS ENTRY
 - EVENT / ATHLETIC & FINE ARTS ENTRY









Huckabee

PROJECT #2 AND #3 MIDDLE SCHOOLS | ALEDO INDEPENDENT SCHOOL DISTRICT

NOT FOR REGULATORY APPROVAL, PERMITTING OR CONSTRUCTION.

EXTERIOR LOOK AND FEEL IMAGES (FROM COMMUNITY EVENT AND DESIGN SESSIONS)





ALEDO MIDDLE SCHOOL

PROJECT OVERVIEW

DISTRICT	Aledo ISD
SCHOOL	Middle Schools
GRADES SERVED	6th - 8th Grades
FUNCTIONAL CAPACITY	1,200
APPROX. SIZE	185,000 SF (135,000 Existing SF)
SITE SIZE RANGE	35-45 acre minimum

HOURS OF OPERATION (DAYS/TIMES)

Instructional Day

Monday - Friday, 8:40 AM (1st Period) - 4:00 PM (7th Period)

Extracurricular Activities

Monday - Friday, 4:00 PM (Depending on Department Event)

INSTRUCTIONAL PROGRAM

Foundation Curriculum

English Language Arts & Reading
Math
Science
History

Enrichment Curriculum

Fine Arts
+ Band
+ Orchestra (possibly in future)
+ Choir
+ Art
+ Dance
+ Theater
Health Education
Languages other than English (LOTE)
CTE
STEM

Physical Education (PE)

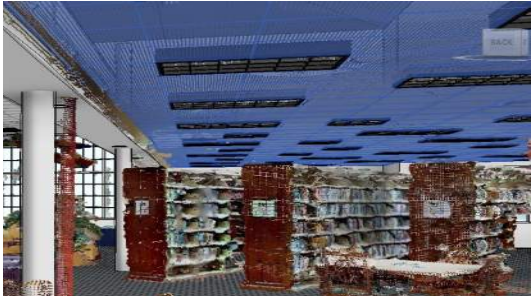
+ Football
+ Basketball
+ Tennis
+ Volleyball
+ Soccer
+ Dance (for PE Credit)
+ Cheerleading
+ Track & Field
+ Cross Country

SITE, SAFETY & SECURITY

- + Double queue with dedicated student loop, staff loop, parent loop, bus loop, and SPED loop
- + 300 parking spaces (50 front (visitor+staff), 250 back (staff))
- + Cameras to accommodate floor plan
- + Access control
- + Perimeter fencing
- + Controlled vestibule
- + Panic with lock down
- + No metal detectors, recognition or entrance gates
- + Visual surveillance from reception to vestibule and parking lot
- + Protected areas or zones
- + Shelter
- + Additional considerations will be evaluated on a case by case basis

COLOR LEGEND

- 1967 ADDITION
- 1977 ADDITION
- 1986 ADDITION
- 2002 ADDITION
- UNKNOWN

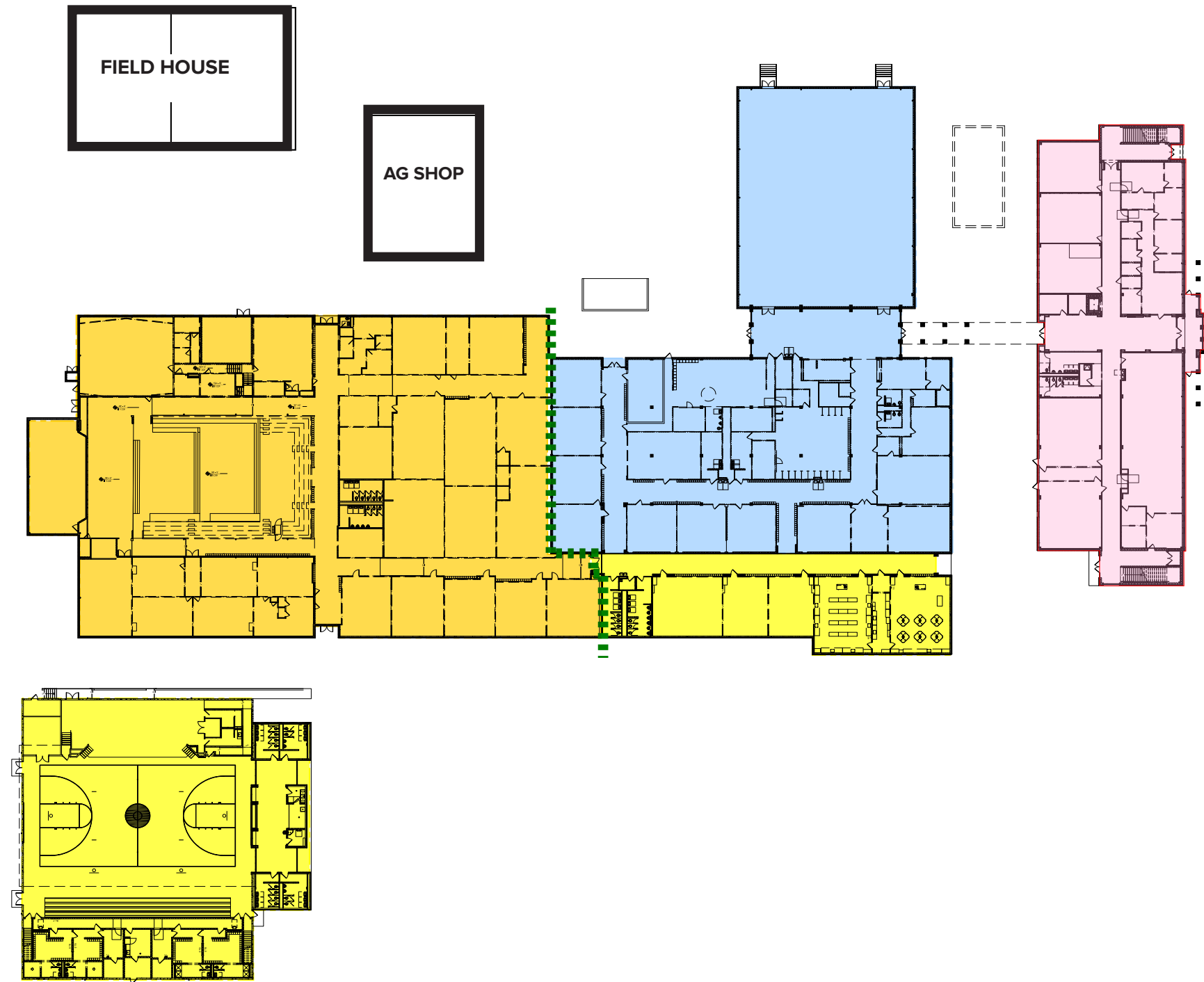


TO INCORPORATE THE PRECEDENT AND IDEAL MIDDLE SCHOOL DESIGN INTO THE EXISTING MIDDLE SCHOOL TAKES SOME UNDERSTANDING OF THE EXISTING MIDDLE SCHOOL BUILDING STRUCTURE AND COMPONENTS, UTILITIES, TRAFFIC PATTERNS, AND SITE CONSTRAINTS.

THE DESIGN TEAM DOVE INTO THE HISTORY OF THE BUILDING AND HOW IT WAS CONSTRUCTED OVER THE YEARS TO BETTER UNDERSTAND HOW TO MOVE FORWARD WITH RENOVATIONS AND ADDITIONS.

THE TEAM ALSO USED A 360 DEGREE CAMERA TO SCAN THE INTERIOR OF THE BUILDING TO CREATE EXISTING AS-BUILT CONDITION DOCUMENTS.

THE DESIGN TEAM UTILIZED A DRONE TO FLY OVER THE SCHOOL TO MAP OUT BUILDING CORNERS AND CONSTRUCTION EXTENTS.





ALEDO INDEPENDENT SCHOOL DISTRICT

PROJECT #2 EXISTING MIDDLE SCHOOL RENOVATION



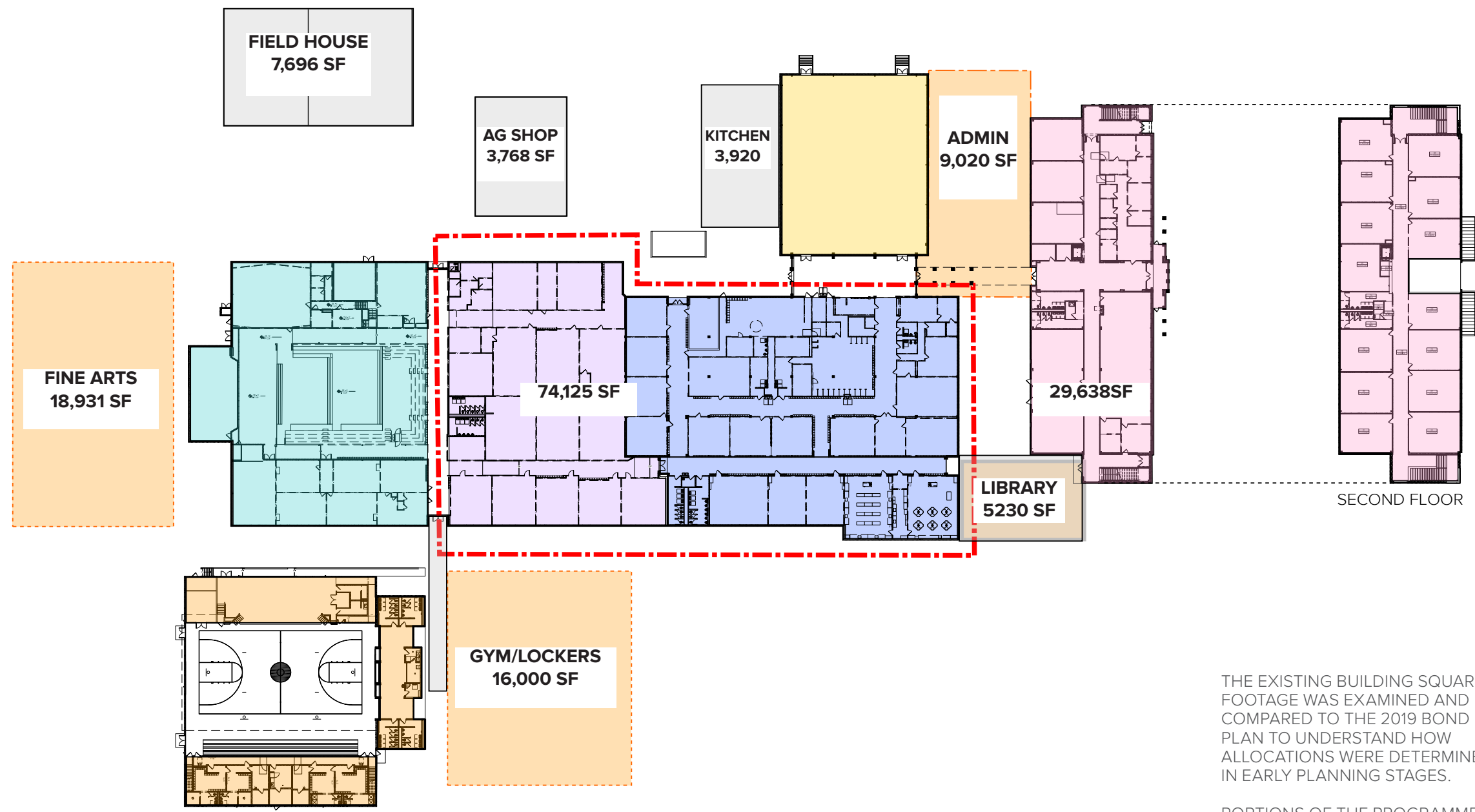
COLOR LEGEND

- OLD GYM
- ACADEMIC, ADMIN, LIBRARY
- ACADEMIC, ATHLETICS, ADMIN.
- ACADEMICS
- CAFETERIA, FINE ARTS
- MULTIPURPOSE GYM
- FIELD HOUSE
- AG SHOP (ABANDONED)

EXISTING BUILDING SQUARE FOOTAGE

- 2 STORY: 29,638 SF
- 1 STORY: 74,125 SF
- MPC: 20,000 SF (INCLUDES MEZZANINE)
- FIELD HOUSE: 7,696 SF
- AG SHOP: 3,768 SF
- TOTAL EXISTING: 135,227 SF

THE EXISTING BUILDING SQUARE FOOTAGE WAS STUDIED TO UNDERSTAND HOW THE BUILDING COULD BE UTILIZED AND THE PROGRAM FOR THE DESIRED MIDDLE SCHOOL PROGRAM COULD FIT WITHIN THE EXISTING PARAMETERS GIVEN.



COLOR LEGEND

- OLD GYM
- ACADEMIC, ADMIN, LIBRARY
- ACADEMIC, ATHLETICS, ADMIN.
- ACADEMICS
- CAFETERIA, FINE ARTS
- MULTIPURPOSE GYM
- FIELD HOUSE
- AG SHOP (ABANDONED)

NEW CONSTRUCTION COST
\$18,052,936.69

NEW CONSTRUCTION SF:
35,600 SF (ADMIN, LIBRARY, GYM/
LOCKERS) FIELD HOUSE, KITCHEN, LOGGIA
NOT INCLUDED AT \$300/SF

18, 931 SF (FINE ARTS WITH 25%
CIRCULATION) AT \$325/SF

RENOVATION COST
\$8,258,904.23

RENOVATION SF:
44,166 AT \$135/SF = \$5,962,410

DEMO SF:
73,820 SF AT \$10/SF = \$738,200

SITE WORK/UTILITIES:
\$1,000,000

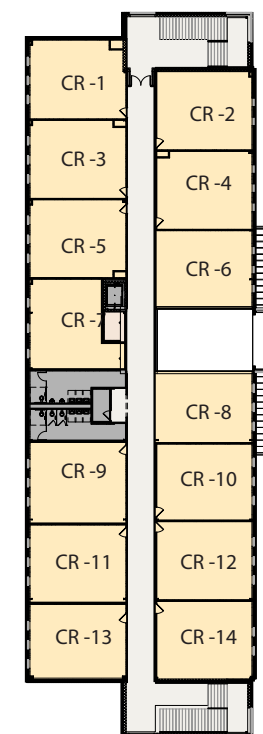
TOTAL BUDGET:
\$26,311,840.80

SQUARE FOOTAGE GOAL
172,000 - 182,000 SF

THE EXISTING BUILDING SQUARE
FOOTAGE WAS EXAMINED AND
COMPARED TO THE 2019 BOND
PLAN TO UNDERSTAND HOW
ALLOCATIONS WERE DETERMINED
IN EARLY PLANNING STAGES.

PORTIONS OF THE PROGRAMMED
SPACE WERE DETERMINED TO
HAVE BEEN EXCLUDED FROM THE
OVERALL NEWLY BUILT SQUARE
FOOTAGE NUMBERS.

AFTER EXAMINING THIS, WE WERE
ABLE TO MOVE FORWARD WITH
THE BOND PLAN FROM PFLUGER
AND FURTHER INVESTIGATE THE
SITE, ADDITIONS, AND RENOVATION
EXTENTS.



COLOR LEGEND

- Academic Space
- Academic Support
- Administration
- Administration Support
- Athletic Space
- Athletic Support
- Circulation
- Dining
- Dining Support (Kitchen)
- Fine Arts
- Fine Arts Support
- Library
- Support Space

PLAN BREAKDOWN:

78,000 SF ADDITION
62,000 SF HEAVY RENOVATION
50,000 SF LIGHT/MED RENOVATION

COST ESTIMATE: \$36-39 MILLION

FINDINGS:

- EXISTING GYM CONSTRUCTION LOAD IS NOT SUITED FOR LARGE GROUP USES
- UTILITIES ON SITE: UNDERGROUND WATER DRAINAGE LOCATED BETWEEN 2 STORY AND 1 STORY BUILDING
- LOCATION OF GREASE TRAP REMOVAL AND INSTALLATION OF NEW WITH UTILITY MOVES IS A COSTLY ENDEAVOR
- EXISTING CAFETERIA CONSTRUCTION WOULD NOT ALLOW FOR PARTIAL TEAR DOWN
- SQUARE FOOTAGE ALLOCATIONS FOR NEW FOOTAGE THAT FITS IN BUDGET GIVEN DO NOT ALIGN

Huckabee

PROJECT #2 AND #3 MIDDLE SCHOOLS | ALEDO INDEPENDENT SCHOOL DISTRICT

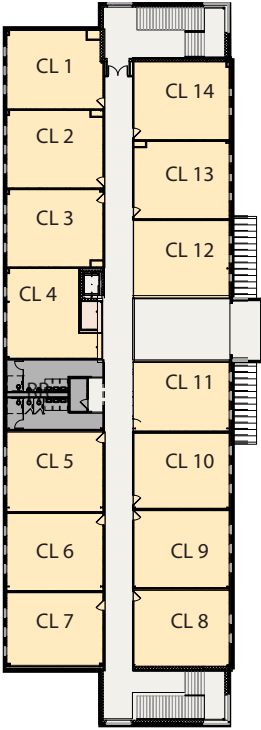
NOT FOR REGULATORY APPROVAL, PERMITTING OR CONSTRUCTION. SHANNON BEARDEN TX - 23389

BOND CONCEPTUAL FLOOR PLAN (PFLUGER)- CONCEPT 1



COLOR LEGEND

- Academic Space
- Academic Support
- Administration
- Administration Support
- Athletic Space
- Athletic Support
- Circulation
- Dining
- Dining Support (Kitchen)
- Fine Arts
- Fine Arts Support
- Library
- Support Space



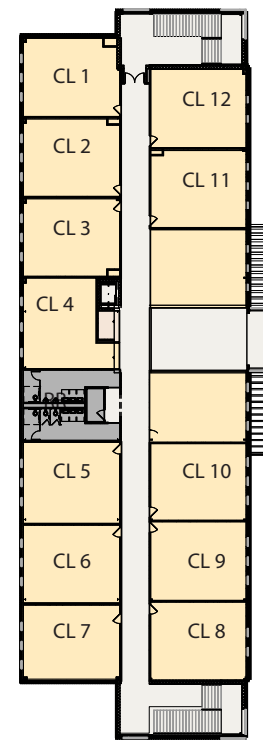
PLAN BREAKDOWN:

65,000 SF ADDITION
100,000 SF LIGHT/MED/HEAVY RENOVATION

COST ESTIMATE: \$30-31 MILLION

CONCEPT 2 WAS DEVELOPED AS AN OPTION TO REDUCE THE BOND PLANNING PLAN (PFLUGER) TO BETTER ALIGN WITH THE BUDGET.

AFTER CONVERSATIONS WITH THE CONTRACTOR, IMPERIAL, IT WAS DETERMINED WE NEEDED TO REDUCE THE AMOUNT OF NEW CONSTRUCTION AND RENOVATION THROUGHOUT THE PLAN



COLOR LEGEND

- Academic Space
- Academic Support
- Administration
- Administration Support
- Athletic Space
- Athletic Support
- Circulation
- Dining
- Dining Support (Kitchen)
- Fine Arts
- Fine Arts Support
- Library
- Support Space

PLAN BREAKDOWN:
 51,000 SF ADDITION
 55,000 SF MED/HEAVY RENOVATION
 32,000 SF LIGHT RENOVATION

COST ESTIMATE: \$24-25 MILLION

AFTER DISCUSSION W/ DISTRICT ADDED:
 - ROOF POP UPS (NATURAL LIGHT AT COLLABORATION PODS)

- CORRIDOR FROM ADMIN TO 6TH GRADE WING

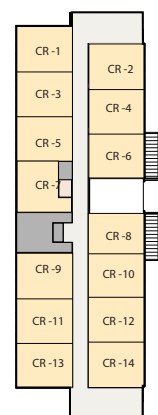
- COURTYARD AT LIBRARY / ATHLETICS FOR WINDOWS AT LIBRARY

-PARKING

COST ESTIMATE: \$26-30 MILLION

CONCEPT 3 WAS DEVELOPED AS AN OPTION TO REDUCE THE AMOUNT OF NEW CONSTRUCTION AND RENOVATION THROUGHOUT THE PLAN TO ALIGN WITH THE BUDGET.

THIS PLAN ALSO TAKES INTO CONSIDERATION THE EXISTING SITE AND BUILDING CONDITIONS.



CONCEPT 1 (PFLUGER)

PLAN BREAKDOWN:

78,000 SF ADDITION

62,000 SF HEAVY RENOVATION

50,000 SF LIGHT/MED RENOVATION

COST ESTIMATE: \$36-39 MILLION

CONCEPT 3

PLAN BREAKDOWN:

51,000 SF ADDITION

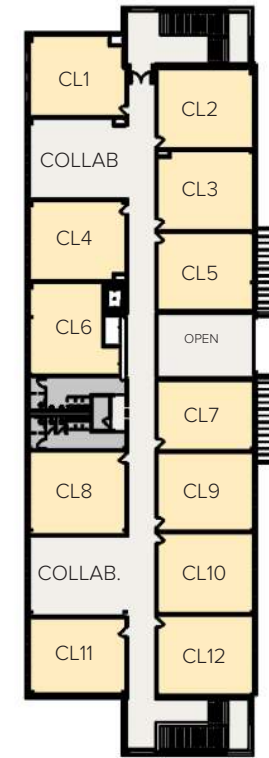
55,000 SF MED/HEAVY RENOVATION

32,000 SF LIGHT RENOVATION

COST ESTIMATE: \$26-30 MILLION

SUMMARY:
DURING BOND PLANNING:
OPPORTUNITIES WERE NOT HAD TO FULLY
VET EXISTING BUILDING CONDITIONS.
WITHOUT KNOWING THE HISTORY OF
THE BUILDING AND ITS INTRICACIES AND
EXISTING UTILITY LAYOUTS, IT IS HARD
TO DETERMINE HOW THE FINAL BUILDING
CAN BEST LAYOUT AND ALIGN IT WITH
COSTS. THERE ARE ALWAYS UNKNOWNNS
THAT ARE UNCOVERED IN THE PROCESS
OF CONSTRUCTION DOCUMENTATION.
THE DESIGN TEAM HAS TAKEN CARE TO
UTILIZE THE BUDGET AND BUILDING WITH
GREAT CARE TO ENSURE THE MIDDLE
SCHOOL IS AFFORDED EQUITY IN DESIGN
AS COMPARED TO THE NEW MIDDLE
SCHOOL.

CONCEPT 3 MEETS THE PRIORITY GOALS, NEEDS AND IS EQUITABLE IN ITS DESIGN TO THE NEW MIDDLE SCHOOL PRECEDENT.



SECOND FLOOR

COLOR LEGEND

- Administration
- Administration Support
- Academic/Specials
- Academic Support
- Library
- Library Support
- Dining
- Kitchen
- Athletics
- Athletic Support
- Fine Arts
- Fine Arts Support
- Career/Tech
- Career/Tech Support
- Circulation
- Restrooms/Support Spaces
- Courtyards

PLAN BREAKDOWN:

51,000 SF ADDITION
55,000 SF MED/HEAVY RENOVATION
32,000 SF LIGHT RENOVATION

THE PLAN COMPLIMENTS AND INTEGRATES END USER FEEDBACK AND CHECKS THE PRIORITY GUIDELINES.

GOALS:

- NEW CONTROLLED ENTRY
- NEW FINE ARTS SPACE
- NEW OUTDOOR SPORTS SPACE
- NEW PRACTICE GYM
- NEW LIBRARY / CAFE SPACE
- COLLABORATIVE ACADEMIC



COLOR LEGEND

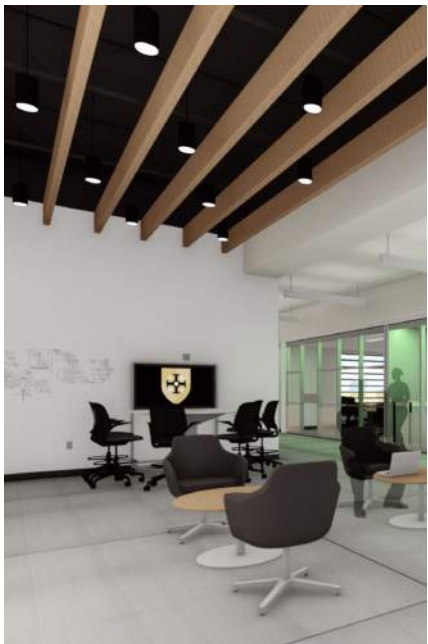
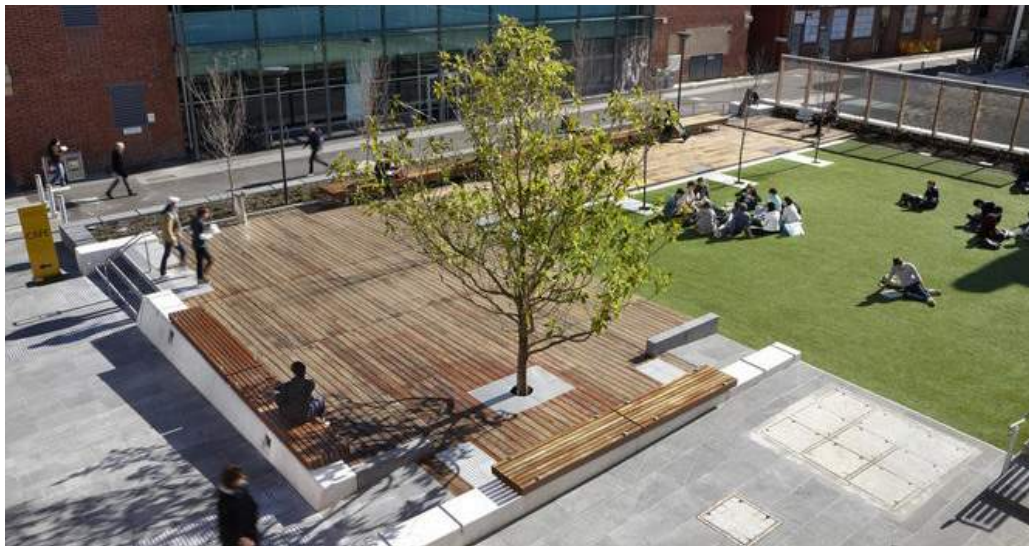
- Administration
- Administration Support
- Academic/Specials
- Academic Support
- Library
- Library Support
- Dining
- Kitchen
- Athletics
- Athletic Support
- Fine Arts
- Fine Arts Support
- Career/Tech
- Career/Tech Support
- Circulation
- Restrooms/Support Spaces
- Courtyards

PLAN BREAKDOWN:

51,000 SF ADDITION
 55,000 SF MED/HEAVY RENOVATION
 32,000 SF LIGHT RENOVATION

THE SCHEMATIC CONCEPT PLANS ARE CURRENTLY BEING MODIFIED PER END USER (TEACHER/ADMIN) FEEDBACK AND WILL CONTINUE TO BE DEVELOPED AS WE MEET WITH STUDENTS AND THE COMMUNITY.

AS WE MOVE TOWARDS THE NEXT PHASE OF DESIGN DEVELOPMENT, WE WILL CONTINUE TO MODIFY THE PLANS TO BEST FIT THE DISTRICT NEEDS.



Huckabee

PROJECT #2 AND #3 MIDDLE SCHOOLS | ALEDO INDEPENDENT SCHOOL DISTRICT

NOT FOR REGULATORY APPROVAL, PERMITTING OR CONSTRUCTION.

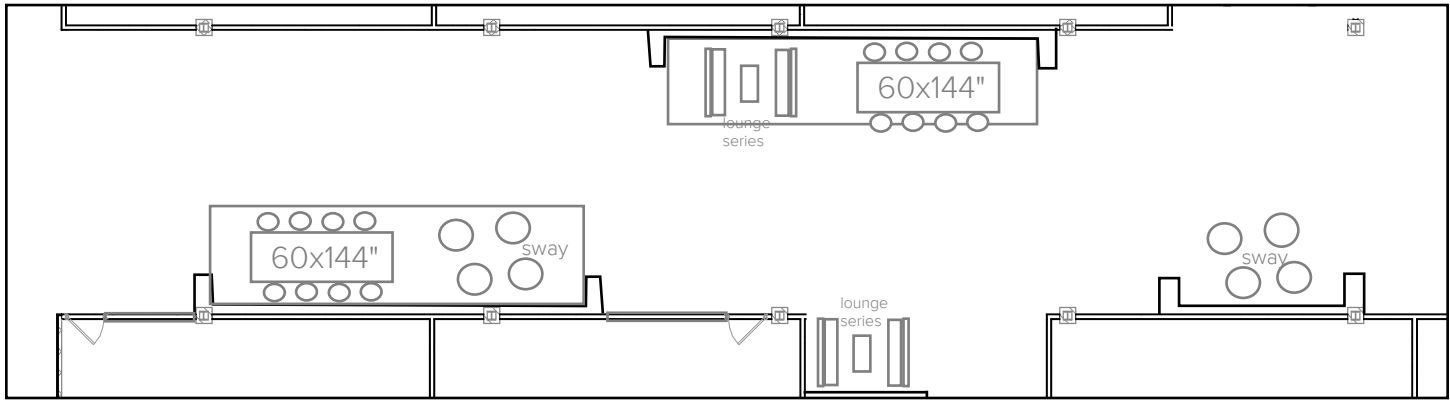
COLLABORATION & CAFETORIUM SPACE / LOOK AND FEEL



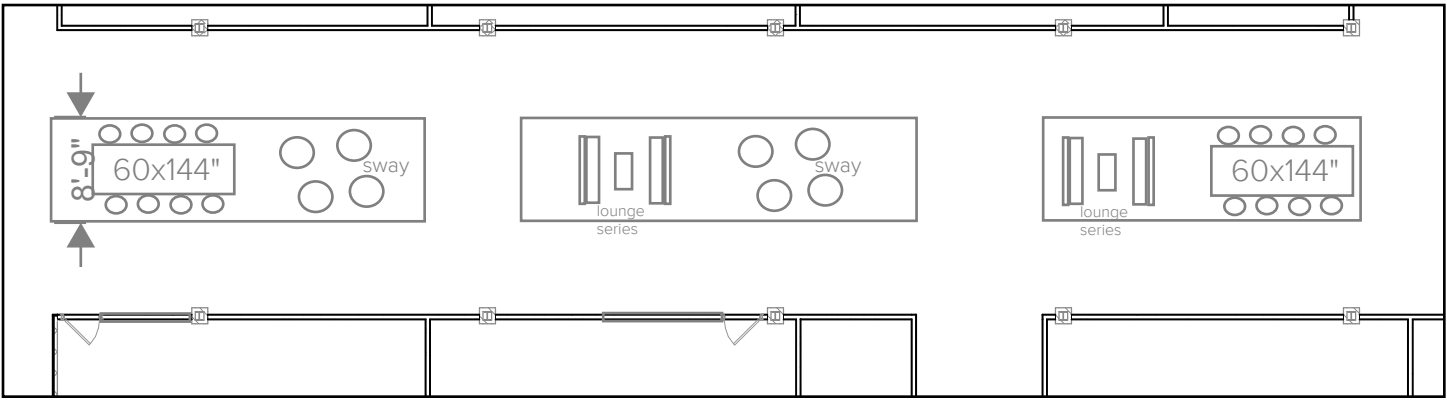
EXISTING CORRIDORS



STUDENT COLLABORATION SPACE: VIEW FROM MODEL TO BE DEVELOPED AND RENDERED FOR BOARD MEETING JUNE 8, 2020
ADDED GLAZING "POP UP" AT CORRIDOR FOR NATURAL LIGHT



SKETCH FLOOR PLAN CONCEPT OF COLLABORATION ZONES

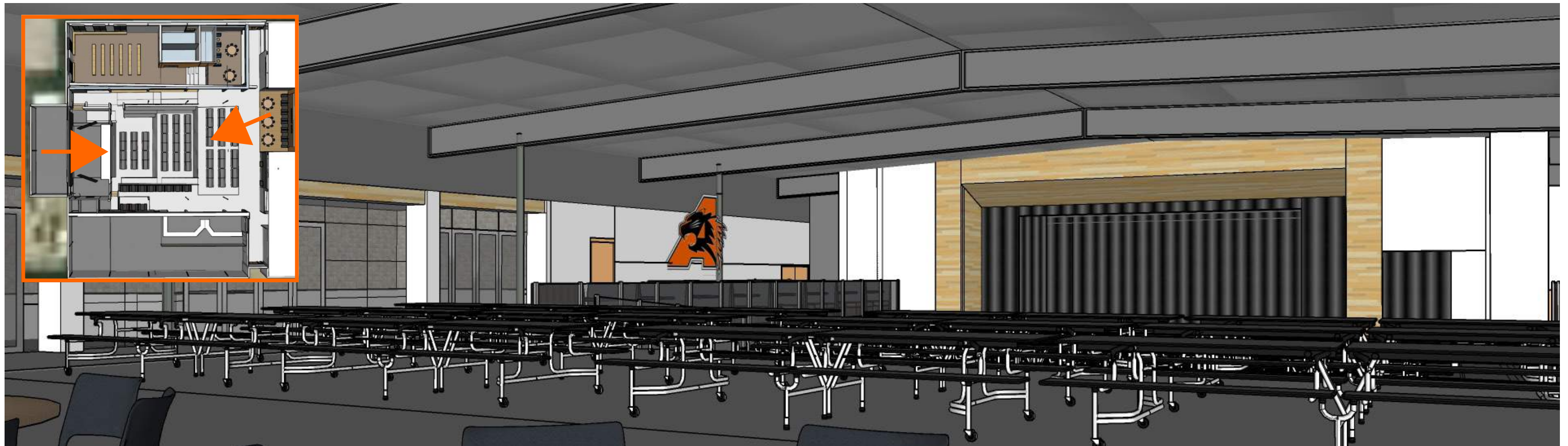


Huckabee

PROJECT #2 AND #3 MIDDLE SCHOOLS | ALEDO INDEPENDENT SCHOOL DISTRICT

NOT FOR REGULATORY APPROVAL, PERMITTING OR CONSTRUCTION.

COLLABORATION CORRIDOR CONCEPT SKETCHES



CAFETORIUM AND LIBRARY SPACE: VIEW FROM MODEL TO BE DEVELOPED AND RENDERED FOR BOARD MEETING JUNE 8, 2020
VIEW TO STAGE - CURRENT DINING "BEARCAT DEN" TO BE AND LARGER SEATING PLATFORMS TO BE ADDED



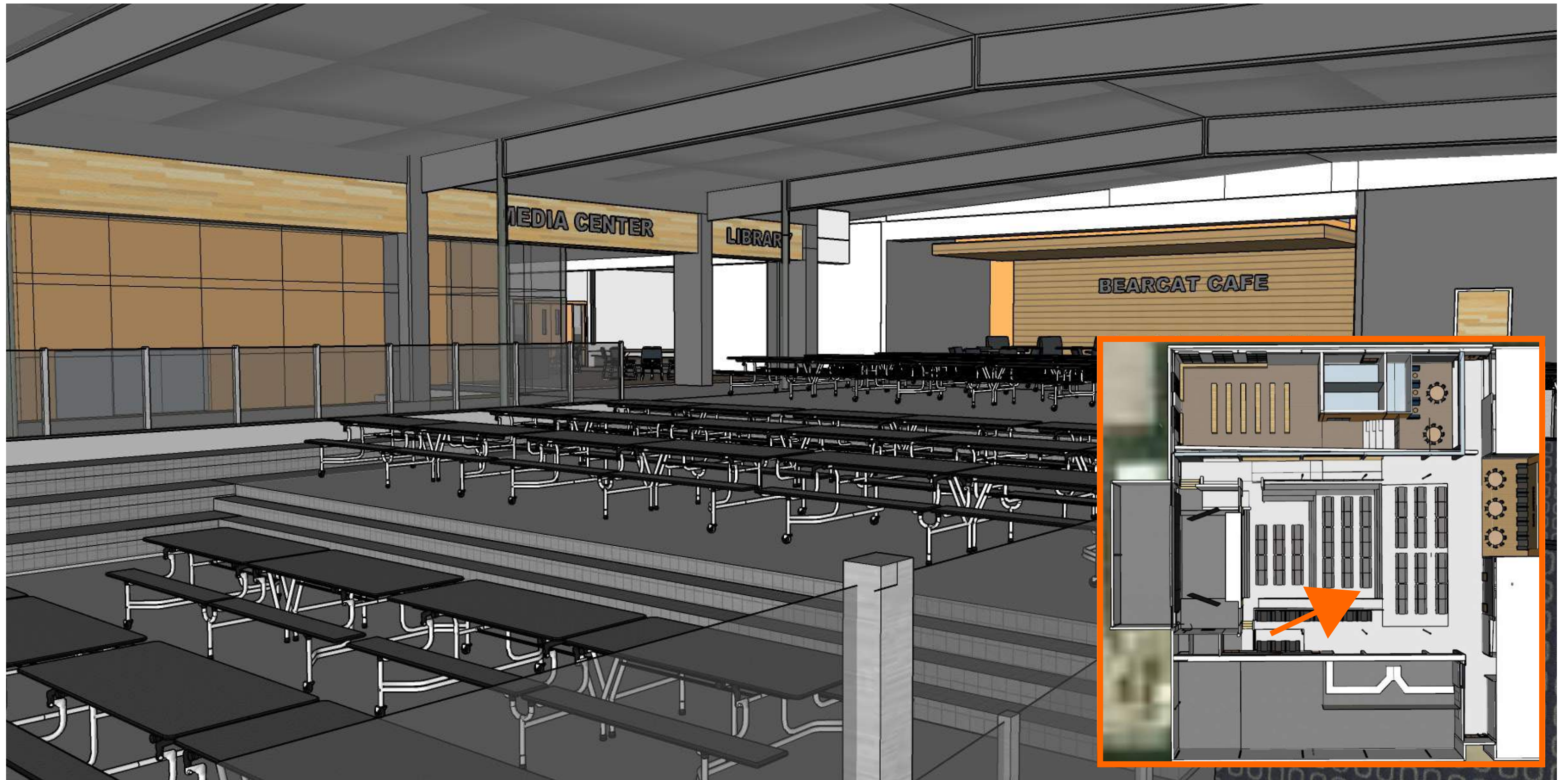
VIEW FROM STAGE - CURRENT DINING "BEARCAT DEN" TO BE INFILLED AND LARGER SEATING PLATFORMS TO BE ADDED

Huckabee

PROJECT #2 AND #3 MIDDLE SCHOOLS | ALEDO INDEPENDENT SCHOOL DISTRICT

NOT FOR REGULATORY APPROVAL, PERMITTING OR CONSTRUCTION. SHANNON BEARDEN TX - 23389

CONCEPT SKETCH VIEW FROM STAGE



CAFETORIUM AND LIBRARY SPACE: VIEW FROM MODEL TO BE DEVELOPED AND RENDERED FOR BOARD MEETING JUNE 8, 2020
 VIEW FROM STAGE - CURRENT DINING "BEARCAT DEN" TO BE INFILLED AND LARGER SEATING PLATFORMS TO BE ADDED



ALEDO INDEPENDENT SCHOOL DISTRICT PROJECT #2 EXISTING MIDDLE SCHOOL RENOVATION







Huckabee

PROJECT #2 AND #3 MIDDLE SCHOOLS | ALEDO INDEPENDENT SCHOOL DISTRICT

NOT FOR REGULATORY APPROVAL, PERMITTING OR CONSTRUCTION.

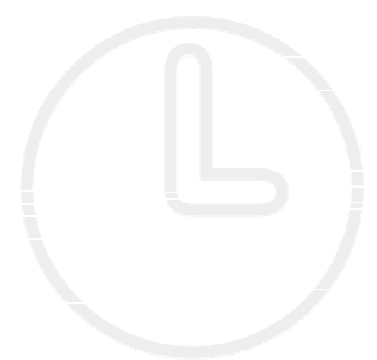
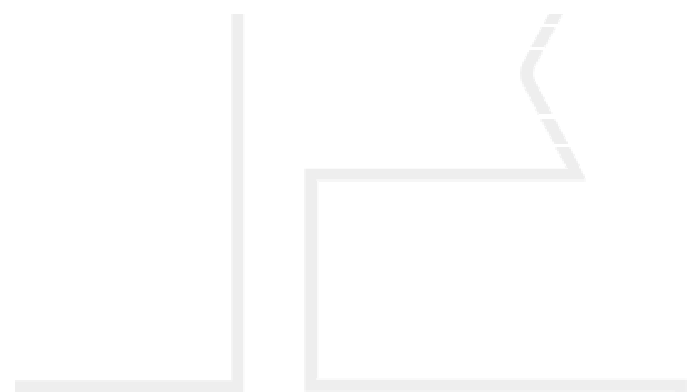
EXTERIOR LOOK AND FEEL IMAGES (FROM COMMUNITY EVENT AND DESIGN SESSIONS)



THE SCHEMATIC CONCEPT EXTERIOR SKETCH VIEWS PULL IN LOOKS FROM THE NATURAL SURROUNDINGS IN AN EFFORT TO BLEND WITH THE COMMUNITY AND NOT OVERWHELM THE ENVIRONMENT.

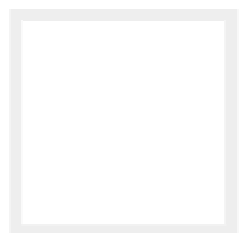
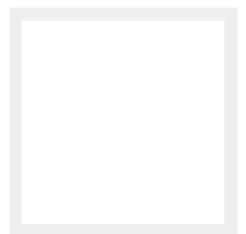
THE BUILDINGS WANT A HINT OF MODERN WITH A WELCOMING SENSE OF BELONGING.

STONE, BRICK, AND TOUCHES OF DARK METAL PANEL AND WOOD ACCENTS WILL BE INCORPORATED AS NODS TO SOME EXISTING BUILDINGS THROUGHOUT THE CAMPUS.



our schools
should be...

flexible
first-rate
positive
secure
relevant
creative
comfortable
inspirational
open
accessible
colorful
fun
bright
hybrid



PROGRAM / SCHEDULE

PROGRAM OF SPACES				
Space/Type of Space	Quantity	Square Footage per Space	Total Square Footage	Max Capacity (25 Students per Classroom)
INSTRUCTIONAL SPACES				
6th Grade Classrooms	12	725	8,700	300
7th Grade Classrooms	12	725	8,700	300
8th Grade Classrooms	12	725	8,700	300
7th & 8th Grade Science Lab/Lecture	6	1,500	9,000	144
6th Grade Science Labs	3	1,500	4,500	72
Storage & Prep Area	4	250	1,000	
AREA SUBTOTAL			40,600	
CAREER AND TECHNICAL EDUCATION				
FLEX Labs	3	1,000	3,000	75
Storage/Tools	3	100	300	
Computer Labs	2	900	1,800	50
AREA SUBTOTAL			5,100	
SPECIAL PROGRAMS				
Content Mastery Clrm	1	750	750	
Life Skills	1	900	900	10
Motor Skills Rm	1	900	900	
Restroom	1	140	140	
Storage	1	80	80	
Laundry Rm	1	80	80	
Speech	0	0	0	
Dyslexia	1	750	750	
SAC (ISS)	1	750	750	
Grade Level Collaboration Space	3	1,500	4,500	
AREA SUBTOTAL			8,850	
FINE ARTS				
BAND				
Band Rehearsal Hall	1	2,700	2,700	25
Instrument/Percussion Storage	1	500	500	
Uniform Storage	1	150	150	
Director's Office	1	275	275	
Ensemble Practice Rooms	1	700	700	
Individual Practice Rooms	4	36	144	
Music Library/Work Area	1	300	300	

PROGRAM OF SPACES

Space/Type of Space	Quantity	Square Footage per Space	Total Square Footage	Max Capacity (25 Students per Classroom)
---------------------	----------	--------------------------	----------------------	--

FINE ARTS, CONT.				
Large Practice Rooms	2	80	160	
FINE ARTS PRACTICE ROOM				
Rehearsal	1	1,200	1,200	25
Director Office	1	100	100	
CHOIR				
Choir Rehearsal Room	1	1,500	1,500	25
Uniform Storage	1	110	110	
Director's Office	1	120	120	
Individual Practice Rooms	4	60	240	
Music Library/Work Area	1	120	120	
VISUAL ARTS				
Studio Lab/Classrooms	2	1,030	2,060	50
Art Storage/Drying Rm	1	150	150	
Kiln	1	120	120	
THEATER ARTS				
Support Storage	1	240	240	
Drama Studio/Classroom/Stage	1	700	700	25
Dressing Rooms	2	150	300	
Office/Library	1	100	100	
Storage	1	200	200	
DANCE				
Multi-purpose Room	1	2,050	2,050	25
Office	1	150	150	
Storage	1	150	150	
Changing Rooms/Lockers/Restroom	2	150	300	
AREA SUBTOTAL			14,839	
PHYSICAL EDUCATION				
Commons/Lobby/Circulation	1	700	700	
Concession/Storage	1	200	200	
Men's Public Restroom	1	220	220	
Women's Public Restroom	1	220	220	
Competition Gymnasium-folding bleacher seating for 6 50	1	10,780	10,780	25
Practice Gymnasium-folding bleacher seating for 250	1	7,800	7,800	25

PROGRAM OF SPACES				
Space/Type of Space	Quantity	Square Footage per Space	Total Square Footage	Max Capacity (25 Students per Classroom)
PHYSICAL EDUCATION, CONT.				
Shelter Office	1	100	100	
Coaches Offices - incl RR & Shower	4	153	612	
Boys Dressing Rooms-incl RR & Sh.	2	1,700	3,400	
Boys Team & Equipment Storage	1	300	300	
Girls Dressing Rooms-incl RR & Sh.	2	1,700	3,400	
Girls Team & Equipment Storage	1	300	300	
Training Room	1	400	400	
Weight Rooms	2	2,000	4,000	
Laundry Room	1	150	150	
Dressing Rooms (incl rr & showers)	2	2,400	4,800	
Offices (incl rr/dressing)	2	450	900	
Athletic Field Storage	1	600	600	
AREA SUBTOTAL			38,882	
CORE SPACES				
LIBRARY/MEDIA CENTER				
Reading Room/Research	1	4,100	4,100	
Work Area	1	200	200	
A/V Equip./Materials/Periodicals Sto	1	230	230	
Multi-purpose Mtg Room	1	700	700	
FOOD SERVICE				
CAFETORIUM				
Dining Area	1	6,800	6,800	
Stage, Ramps & Set Storage	1	2,000	2,000	
Boys Restroom	1	240	240	
Girls Restroom	1	280	280	
Chair/Table Storage	1	200	200	
Janitor/Storage	1	200	200	
KITCHEN & SERVING				
Prep/Serving Areas	1	2,800	2,800	
Dishwashing	1	180	180	
Custodial	1	80	80	
Pantry/Dry Storage	1	200	200	

PROGRAM OF SPACES

Space/Type of Space	Quantity	Square Footage per Space	Total Square Footage	Max Capacity (25 Students per Classroom)
---------------------	----------	--------------------------	----------------------	--

CORE SPACES, CONT.

Walk-in Cooler/Frzzr	2	200	400	
Office	1	100	100	
Restroom/Locker Area	1	80	80	
Laundry	1	80	80	
AREA SUBTOTAL			18,870	

MAIN ADMINISTRATION

ADMINISTRATIVE SPACES

Public Recep/Waiting/Secret	1	400	400	
Attendance/Registrar	1	200	200	
Principal Office	1	220	220	
Asst Principal Recep/Waiting/Sec.	1	180	180	
Assistant Principal's Offices	3	160	480	
Counselor Recep/Waiting/Sec	1	180	180	
Counselor's Offices	3	160	480	
Speech Therapy/SPED/Counseling	1	180	180	
Flex Office	1	120	120	
Diagnostician	1	140	140	
Storage Area/File Room/Records	1	120	120	
ARDs Conf. Rm	1	275	275	
Work Room	1	120	120	
Vault/Records	1	100	100	
Restrooms	3	80	240	
Conference Room	1	240	240	
Admin Storage	2	80	160	
Circulation	1	500	500	
SRO	1	120	120	

CLINIC

Office	1	100	100	
Clinic	1	400	400	
Exam/Treatment Room	1	80	80	
Restroom	1	90	90	
Storage	1	40	40	

PROGRAM OF SPACES				
Space/Type of Space	Quantity	Square Footage per Space	Total Square Footage	Max Capacity (25 Students per Classroom)
MAIN ADMINISTRATION, CONT.				
TEACHER WORK CENTERS				
Teacher's Lounge	1	750	750	
Restrooms	3	60	180	
Teacher's Work Center (TWC)	3	700	2,100	
AREA SUBTOTAL			8,195	
GENERAL FACILITY SUPPORT				
General Student Restrooms	8	240	1,920	
Custodial			-	
Central Storage/Holding Area	1	200	200	
Sub-Storage Area	3	80	240	
Wet Closets	6	60	360	
Office	1	100	100	
Book Storage	1	250	250	
Stairs	8	200	1,600	
Elevator(s)	1	160	160	
MDF	1	150	150	
AREA SUBTOTAL			4,980	
PLANT SERVICES				
Mechanical	3	500	1,500	
Branch Electrical	3	75	225	
Main Electrical	1	400	400	
Tech-IDF Rooms	4	100	400	
Sprinkler Riser Room	1	100	100	
AREA SUBTOTAL			2,625	
TOTAL BUILDING AREA/CAPACITY TOTALS				
TOTAL NUMBER OF STUDENTS, MAX CAPACITY				1,476
TOTAL STUDENTS AT 83% CAPACITY				1,225
TOTAL NET SQUARE FOOTAGE			142,941	
TOTAL NON-ASSIGNABLE SPACES (WALL, CIRCULATION, CHASES, ETC.)			40,023	28%
TOTAL ESTIMATED BUILDING GROSS AREA			182,964+	

PROJECT DATES

