

Bearcat Growth Committee



Community Meetings
July 18 & July 23, 2019

What is the Bearcat Growth Committee (BGC)?

- 38 community members representing a diversity of demographics and geography
- Members chosen through combination of application process, nomination by campus representatives, and School Board Trustee appointment
- Chaired by community members Christi James and Jim Scott
- Purpose is to represent the AISD community in the study of data related to
 - enrollment
 - finances
 - instructional priorities
 - facility needs
- Will recommend a bond program to the AISD Board of Trustees to address district-wide facility needs due to growing student enrollment and aging facilities for anticipated November 5, 2019 bond election

What does the BGC do?

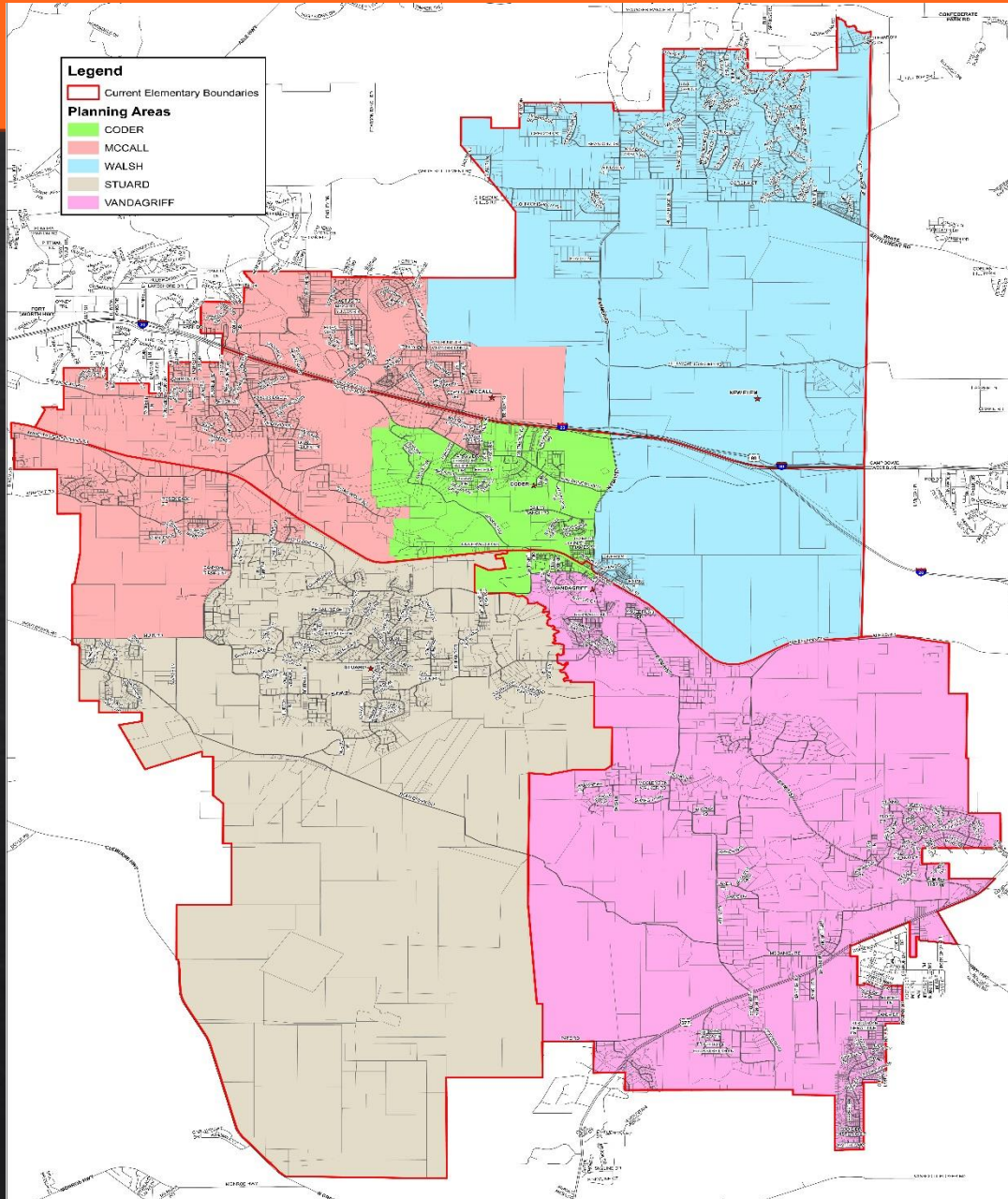
Members of the BGC:

- have met 9 times since January
- analyze data
- ask questions and request information from the district
- work in small and large groups to determine priorities
- consider the needs and expectations of the AISD community

Why is the BGC hosting Community Meetings?

- To share information with you
- To answer your questions
- To gather feedback from you to bring back to the entire BGC

Aledo ISD Map



District Covers
130 Square Miles

Aledo
Annetta
Annetta North
Annetta South
Hudson Oaks
Willow Park
Cresson
Fort Worth



Campuses & Grades Served

Five Elementary Campuses

(Kindergarten – 5th Grade)

Coder (Pre-K)

McCall

Stuard

Vandagriff

Walsh

McAnally Intermediate School

(6th Grade campus)

Aledo Middle School

(7th-8th Grade)

Daniel Ninth Grade Campus

(9th Grade)

Aledo High School

(10th-12th grade)

Aledo Learning Center

(self-paced high school)

Excellence in Academics



99 % - Graduation Rate



\$24 Million - Class of 2019 Scholarships



26 - Advanced Placement Courses Offered



24 - Dual Credit Course Hours Offered



82 % - Grads Enroll in Post-Secondary Ed

Aledo ISD Vision Statement



Growing greatness through exceptional experiences that empower learners for life.



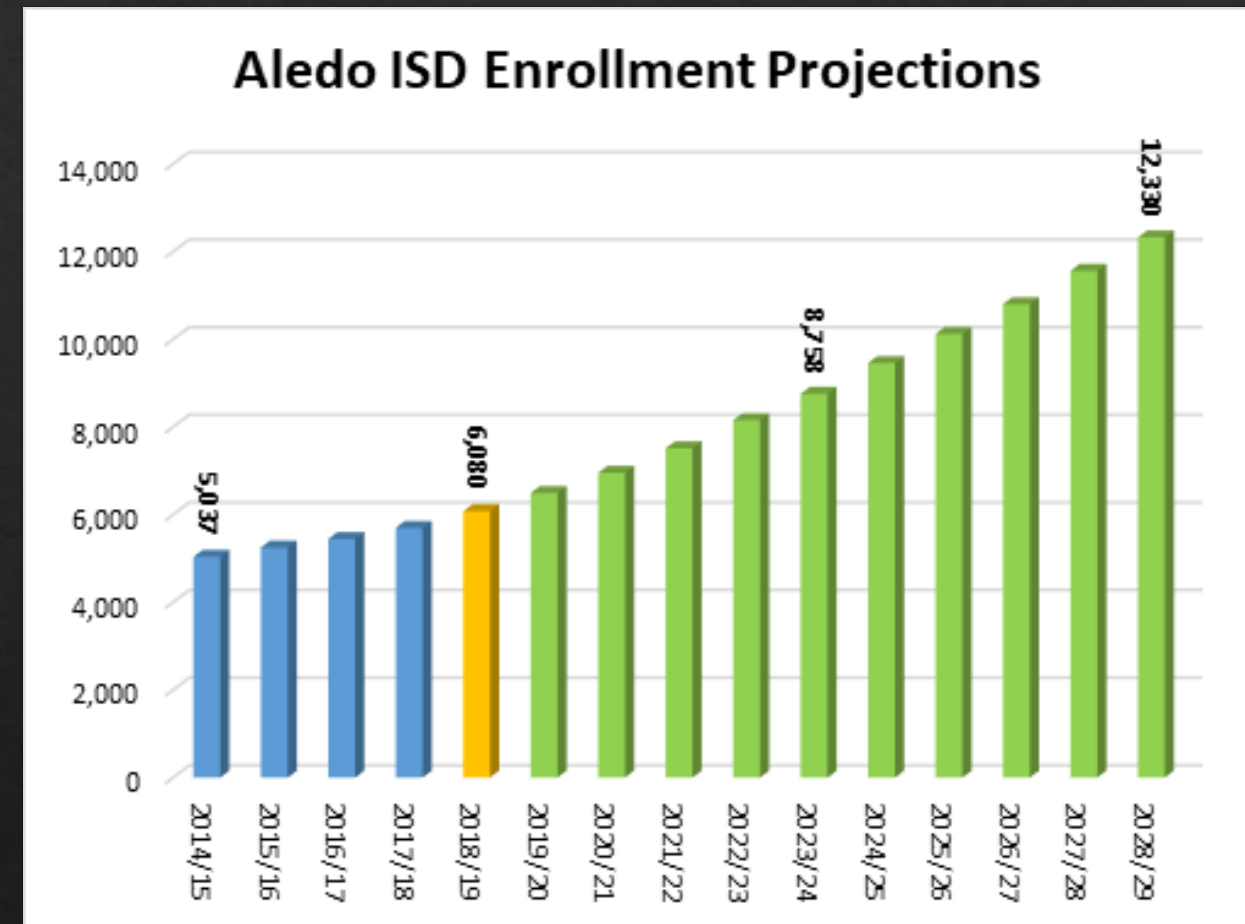
Aledo ISD is Growing Greatness!

High enrollment growth

- 2nd highest % growth for district over 5,000 students in Ft. Worth region
- 4th highest % growth for district over 5,000 students in entire DFW region

Planned residential development

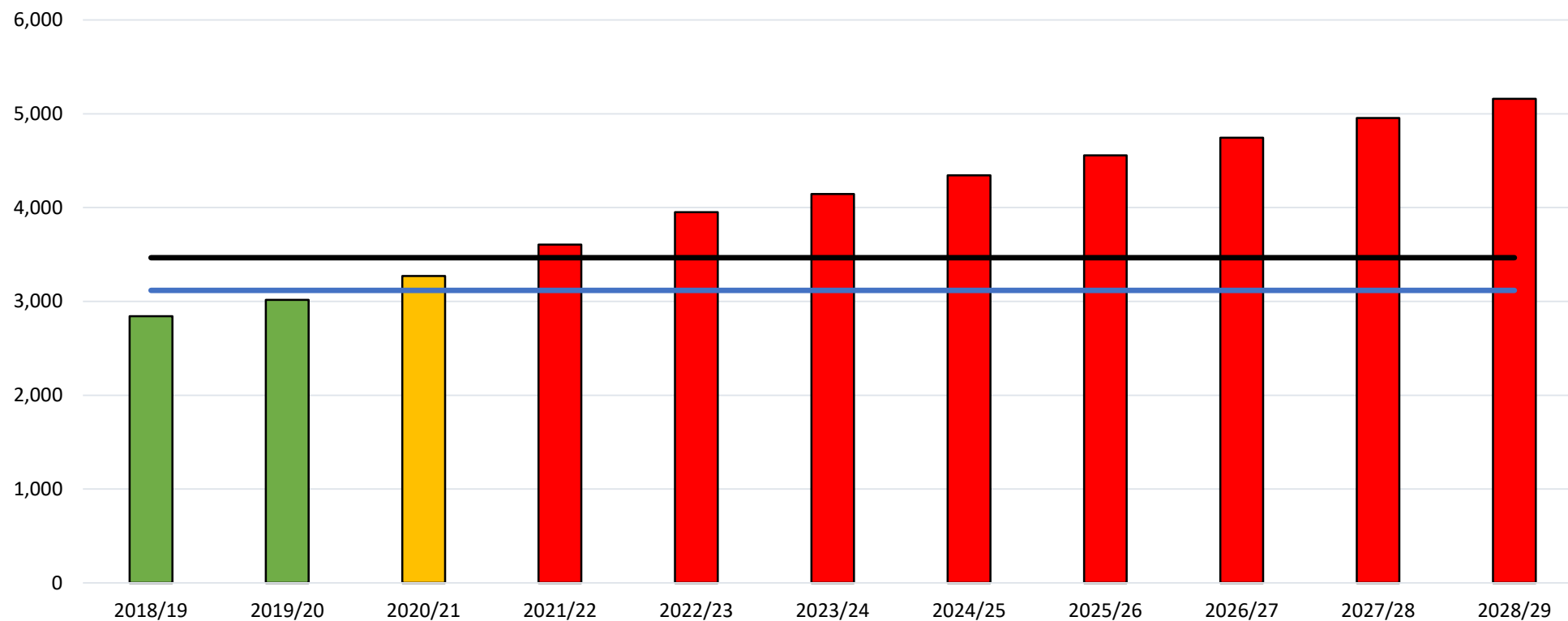
- 1,300 lots available for development
- 16,700 future planned lots (groundwork is underway on 1,090 of those lots)



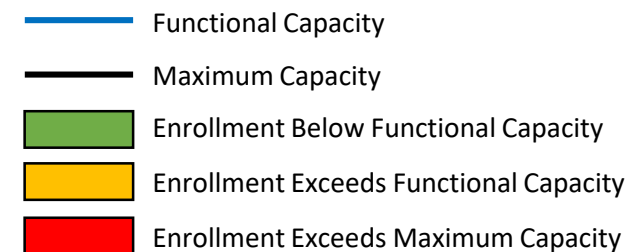
Elementary Enrollment/Capacity



Aledo Elementary Schools Combined
Capacity Compared to Projected Student Enrollment Growth



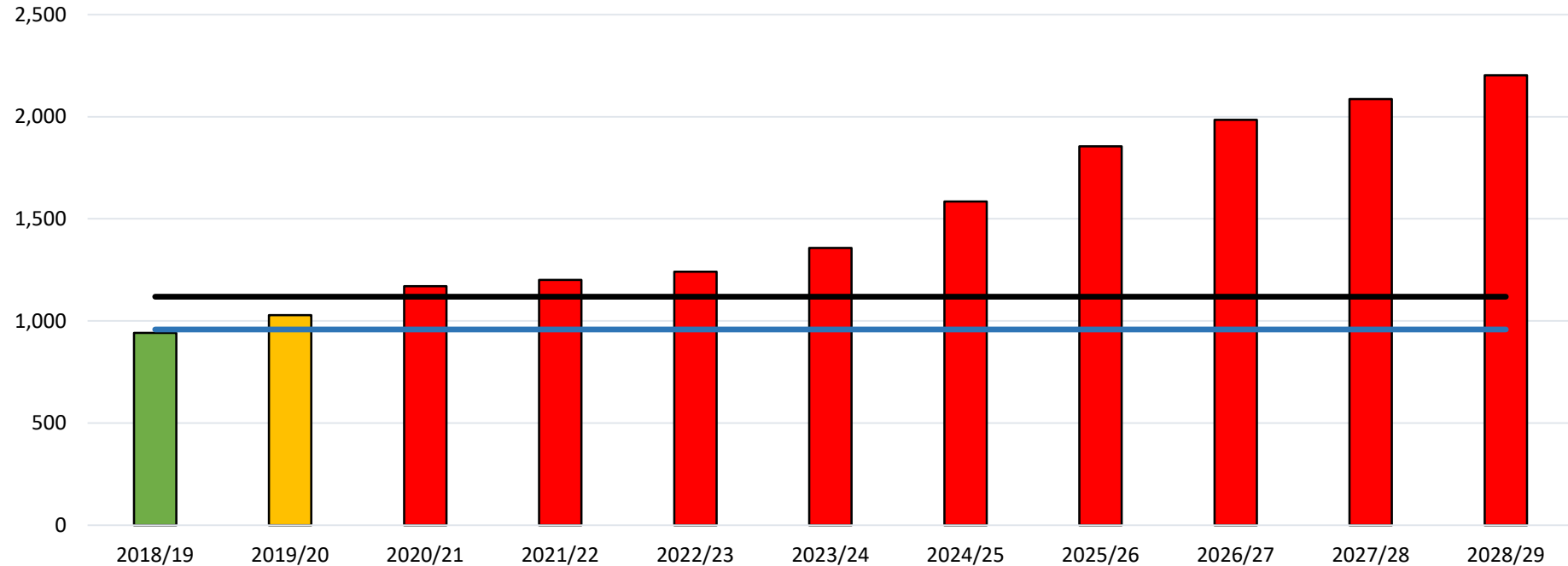
- Total current elementary school functional capacity is 3116.
- Total current elementary school maximum capacity is 3466.
- In 2 years (2021-22), projected enrollment will be 3605.



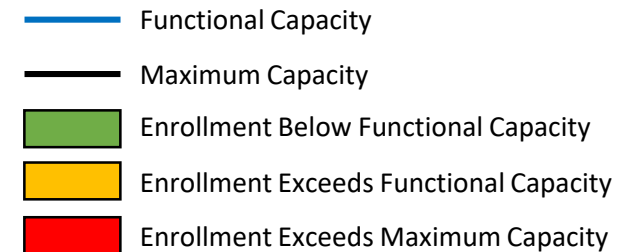
Middle School Enrollment/Capacity



**Aledo Middle School
Capacity Compared to Projected Student Enrollment Growth**

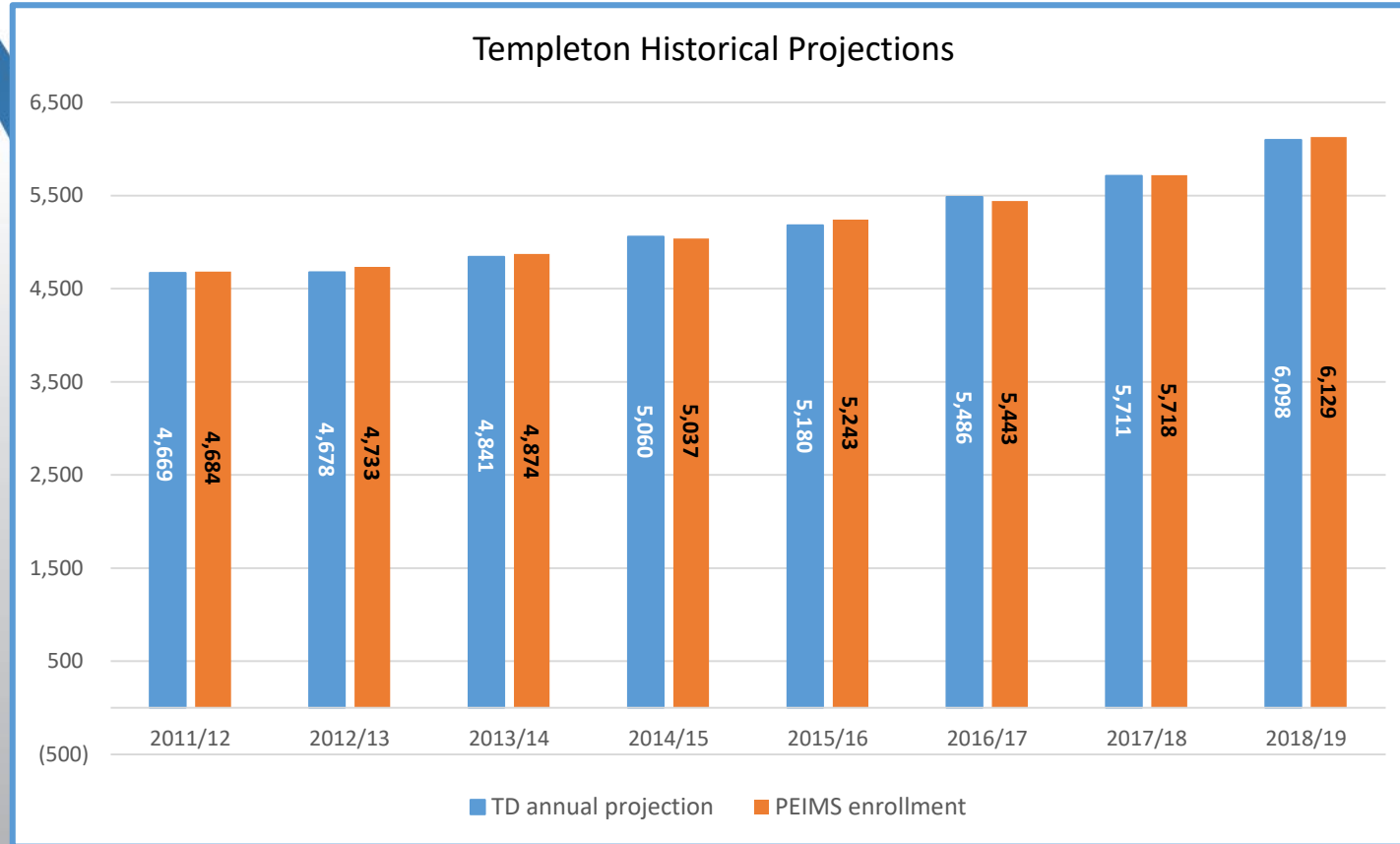


- Total current Aledo Middle School functional capacity is 958.
- Total current Aledo Middle School maximum capacity is 1119.
- In 1 year (2020-2021), projected enrollment will be 1170.





Demographic Projections Historically Accurate



	TD annual projection	PEIMS enrollment	Difference	% Variance
2011/12	4,669	4,684	-15	-0.32%
2012/13	4,678	4,733	-55	-1.16%
2013/14	4,841	4,874	-33	-0.68%
2014/15	5,060	5,037	23	0.46%
2015/16	5,180	5,249	-69	-1.20%
2016/17	5,486	5,443	43	0.79%
2017/18	5,711	5,718	-7	-0.12%
2018/19	6,098	6,129	-31	-0.51%
			Average Variance	0.34%



Two Parts of the District's Tax Rate/Budget

Maintenance & Operations (M&O)

(subject to recapture)



Day-to-Day Operational Expenses

Teacher and Staff Salaries, Classroom Supplies, Utilities,
Bus Transportation Costs

Interest & Sinking (I&S)

(not subject to recapture)



Debt Service Expenses

Annual Principal & Interest Payments on Bonds Approved
by District Voters

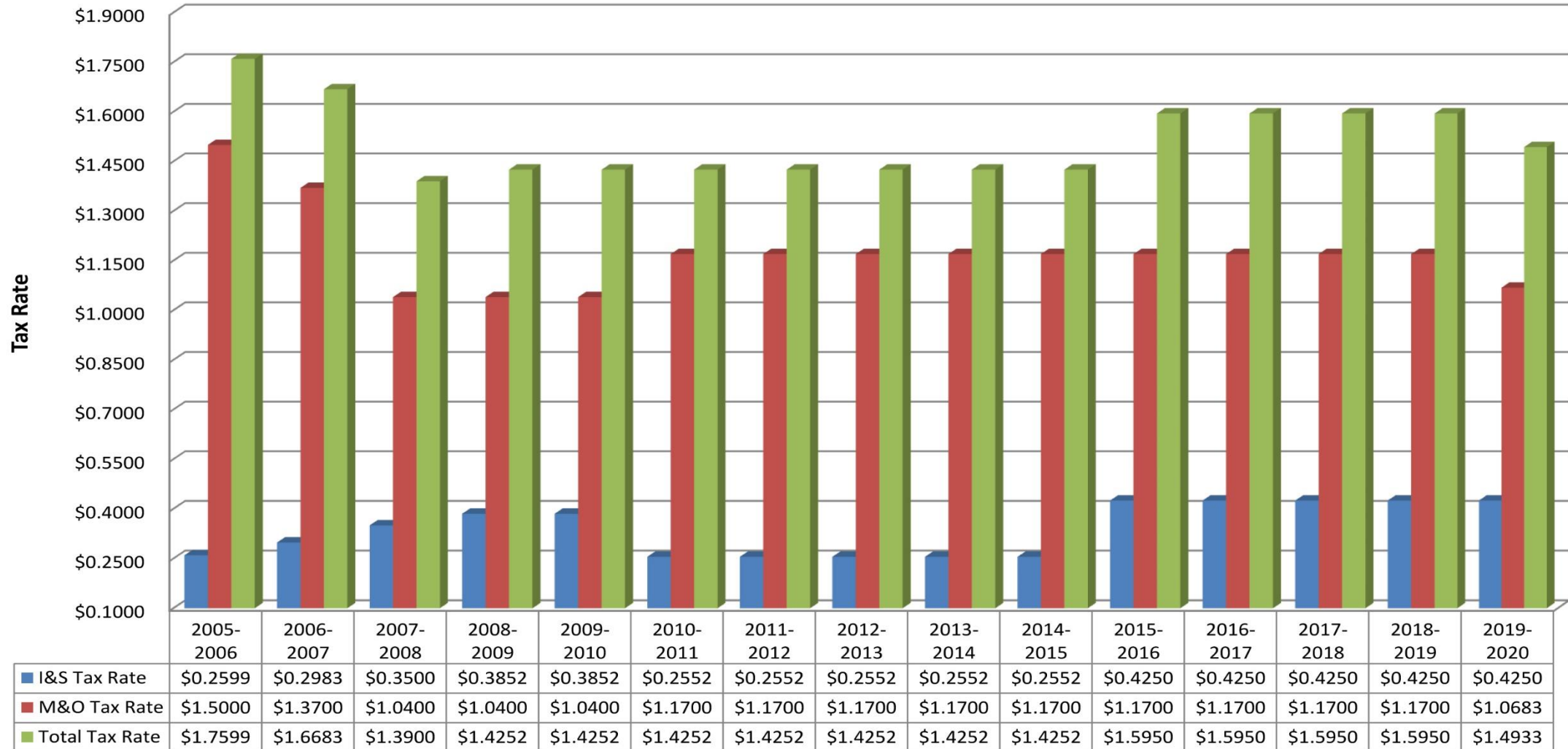
Voter approved bond funds may not be used to pay for
M&O expenses, such as hiring additional teachers.

Bond funds from a successful bond election may only be
used for the construction/renovation of facilities, the
acquisition of land, and the purchase of capital items such
as equipment, technology, and buses.

Aledo ISD Tax Rates



Aledo ISD Tax Rates
(2019-2020 Tax Rate is Projected)



Planning for Growth

- AISD has saved +\$34M in interest costs since 2006 through debt management practices
- Estimated bond capacity in November 2019: \$141 Million with 0¢ tax rate increase

Needs/Projects Considered by BGC

- Renovation of Aledo Middle School (grades 6-8)
- New Middle School #2 (6-8)
- Conversion of McAnally Intermediate into elementary school (K-5)
- New Elementary School #6
- Renovation of Vandagriff Elementary into AISD early childhood campus
- Land purchases for future campuses

Stay in touch with the BGC



BGC Website

aledoisd.org/BGC



Questions/Comments for BGC?

Email - BGCB@aledoisd.org

#GrowingGreatness